



**COMPLETION
& PRODUCTION
SERVICES CO.**

**SONIC
LOG**

Company MULL DRILLING COMPANY, INC.
Well #1-25 RLL
Field WILDCAT
County SHERIDAN
State KANSAS

Company MULL DRILLING COMPANY, INC.
Well #1-25 RLL
Field WILDCAT
County SHERIDAN State KANSAS
Location: API # : 15-179-21370-0000
1000' FNL & 2153' FWL
SEC 25 TWP 7S RGE 26W
Permanent Datum GROUND LEVEL Elevation 2526
Log Measured From KELLY BUSHING 5' A.G.L.
Drilling Measured From KELLY BUSHING
Other Services
CDL/CNL/PE
DIL/MEL
Elevation
K.B. 2531
D.F. 2529
G.L. 2526

Date	9/11/14
Run Number	TWO
Depth Driller	4350
Depth Logger	4350
Bottom Logged Interval	4342
Top Log Interval	200
Casing Driller	8 5/8"@258'
Casing Logger	258
Bit Size	7 7/8"
Type Fluid in Hole	CHEMICAL MUD
Density / Viscosity	9.2/58
pH / Fluid Loss	10.5/7.6
Source of Sample	FLOWLINE
Rim @ Meas. Temp	1.40@90F
Rmf @ Meas. Temp	1.05@90F
Rmc @ Meas. Temp	1.68@90F
Source of Rmf / Rmc	MEASUREMENT
Rim @ BHT	1.06@119F
Time Circulation Stopped	4 HOURS
Time Logger on Bottom	4:00 A.M.
Maximum Recorded Temperature	119F
Equipment Number	4854
Location	HAYS, KANSAS
Recorded By	JEFF LUEBBERS
Witnessed By	KEVIN KESSLER

<<< Fold Here >>>

All interpretations are opinions based on inferences from electrical or other measurements and we cannot and do not guarantee the accuracy or correctness of any interpretation, and we shall not, except in the case of gross or willful negligence on our part, be liable or responsible for any loss, costs, damages, or expenses incurred or sustained by anyone resulting from any interpretation made by any of our officers, agents or employees. These interpretations are also subject to our general terms and conditions set out in our current Price Schedule.

Comments

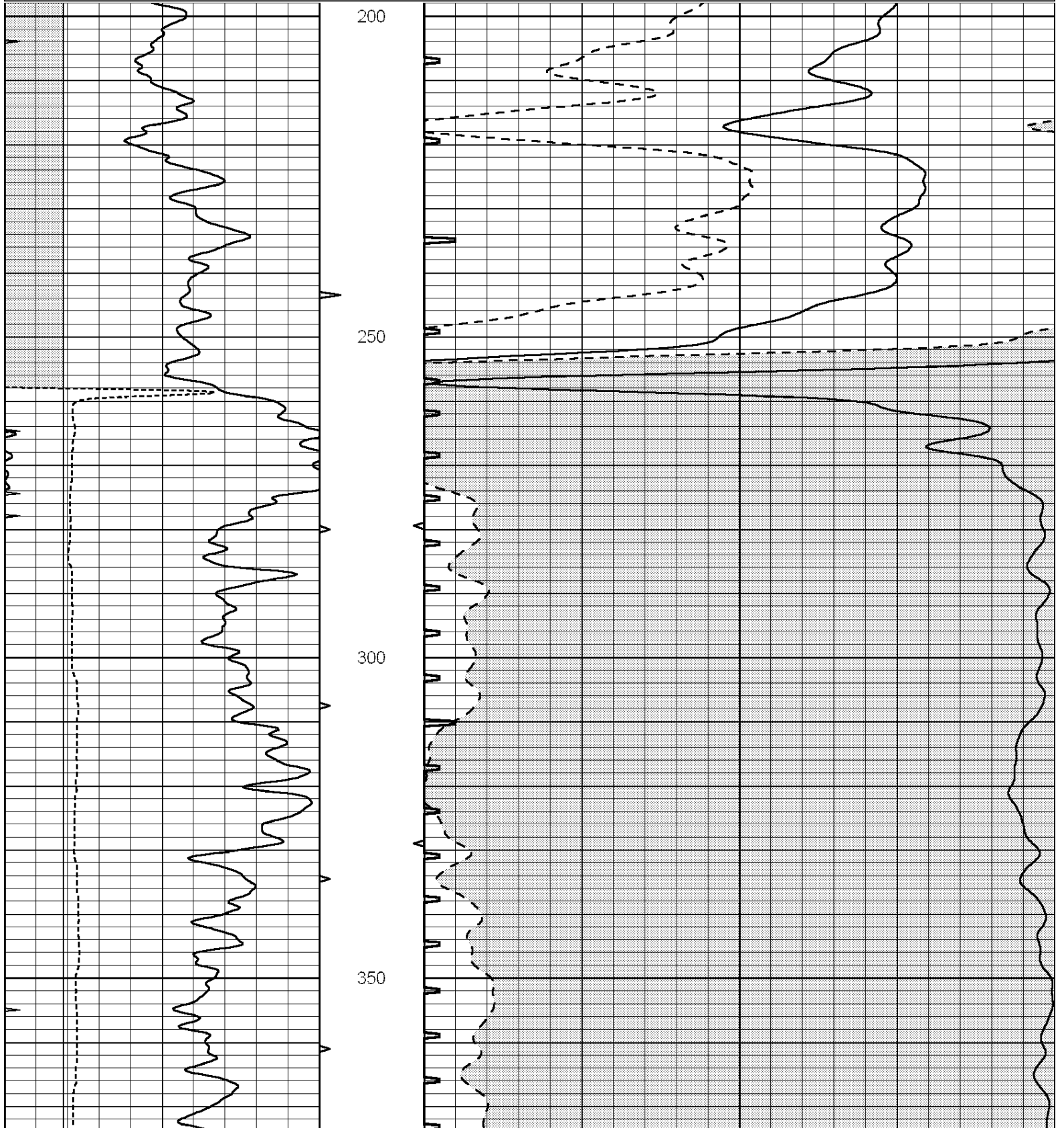
THANK YOU FOR USING "NABORS" HAYS, KANSAS (785) 628-6395
DIRECTIONS
STUDLEY, KS.& HWY 24 @GRAHAM/SHERIDAN COUNTY LINE, TAKE RD. 100, 4 1/2 N., 1/2 W. INTO

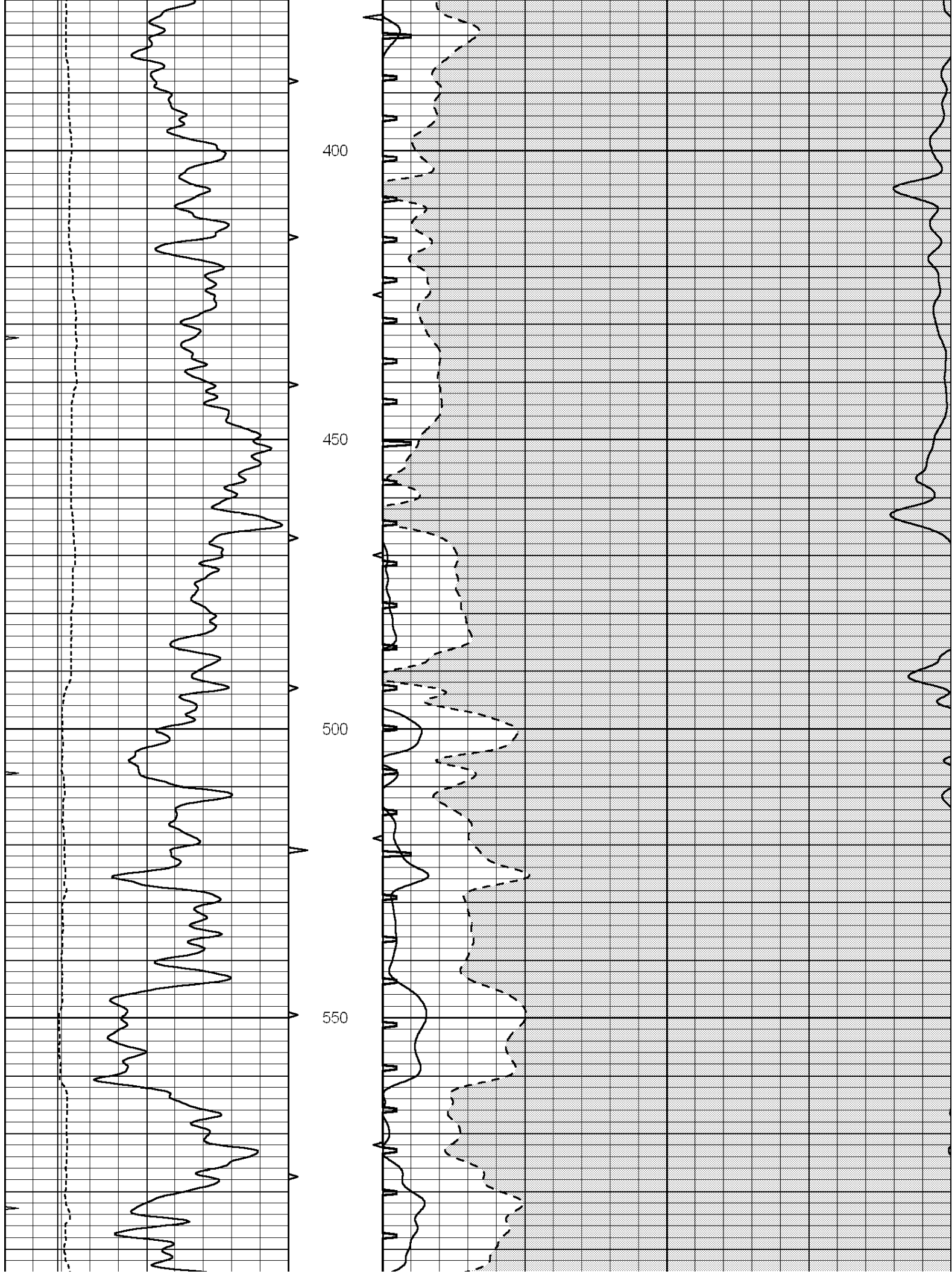


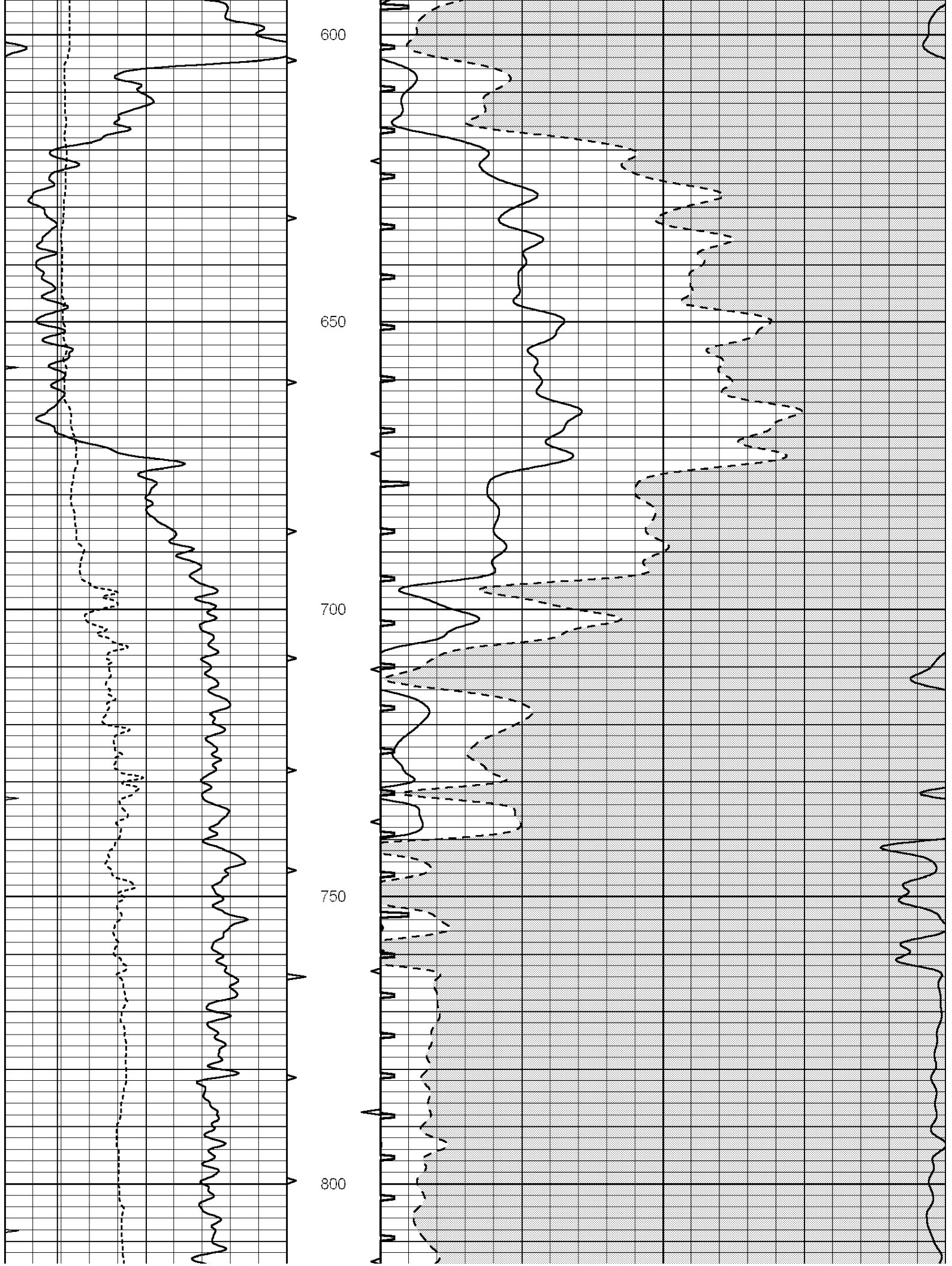
MAIN SECTION

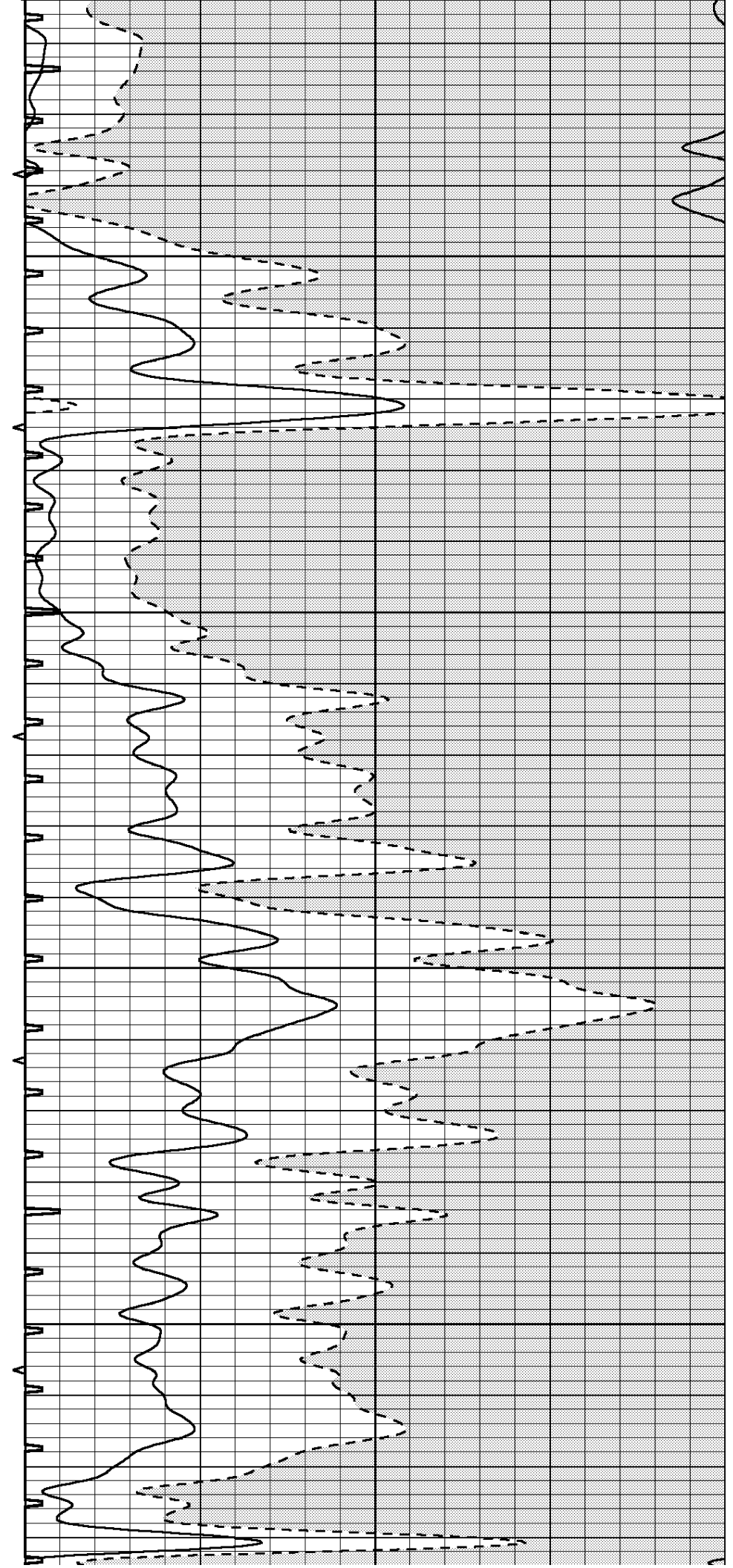
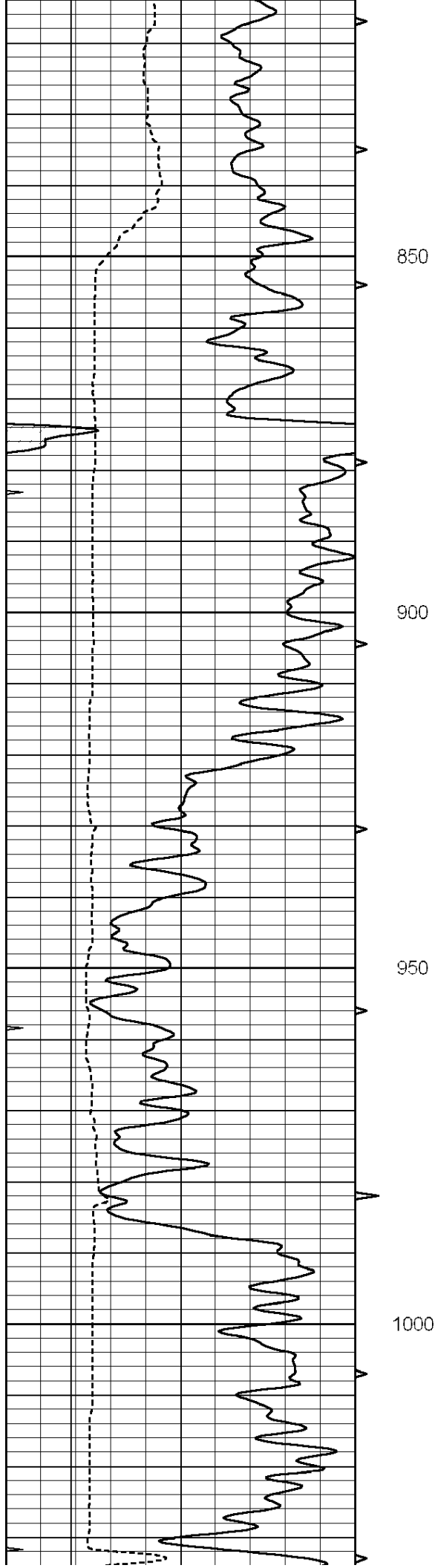
Database File: 25877pe.db
 Dataset Pathname: pass6.3
 Presentation Format: slt
 Dataset Creation: Thu Sep 11 08:02:37 2014 by Calc SOC 120430
 Charted by: Depth in Feet scaled 1:240

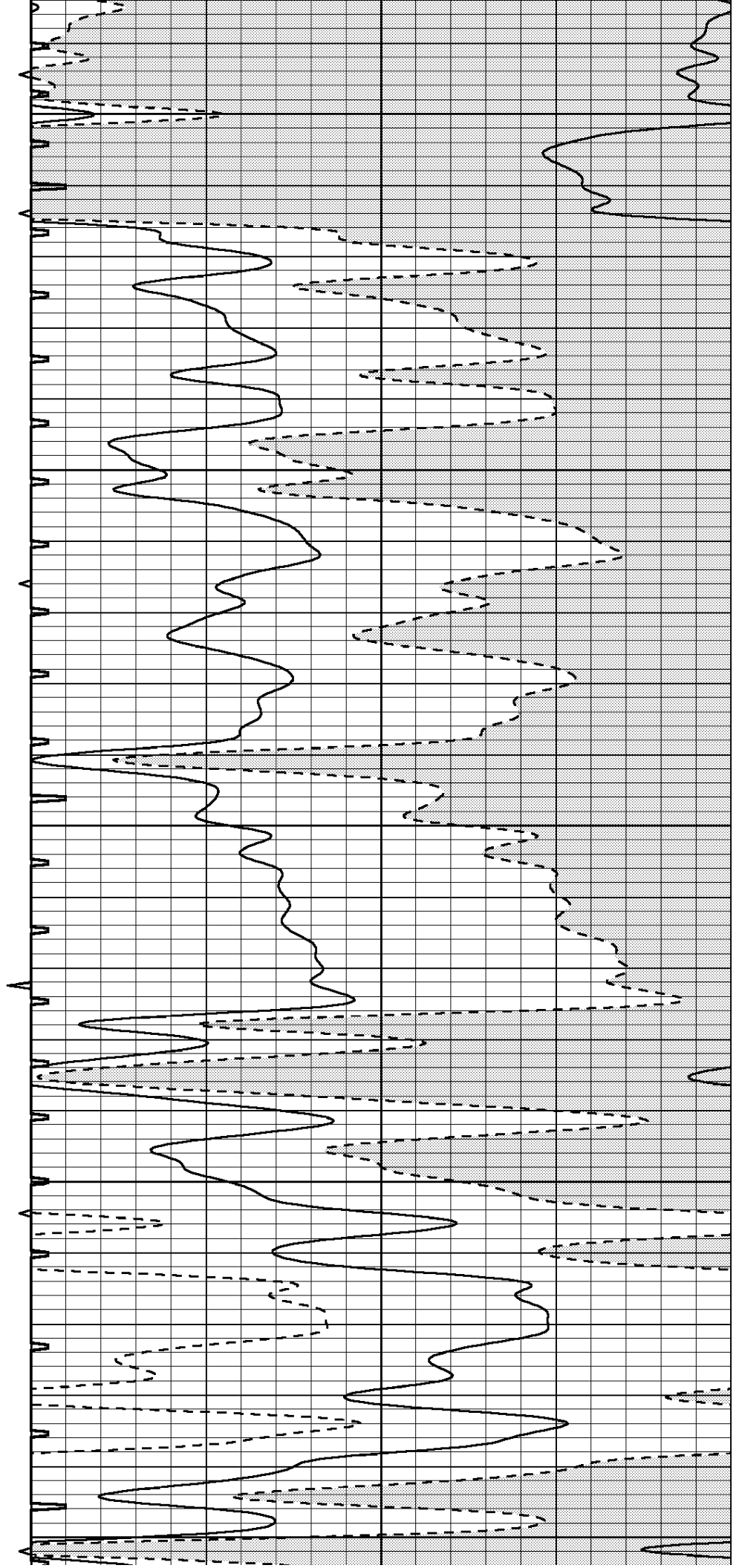
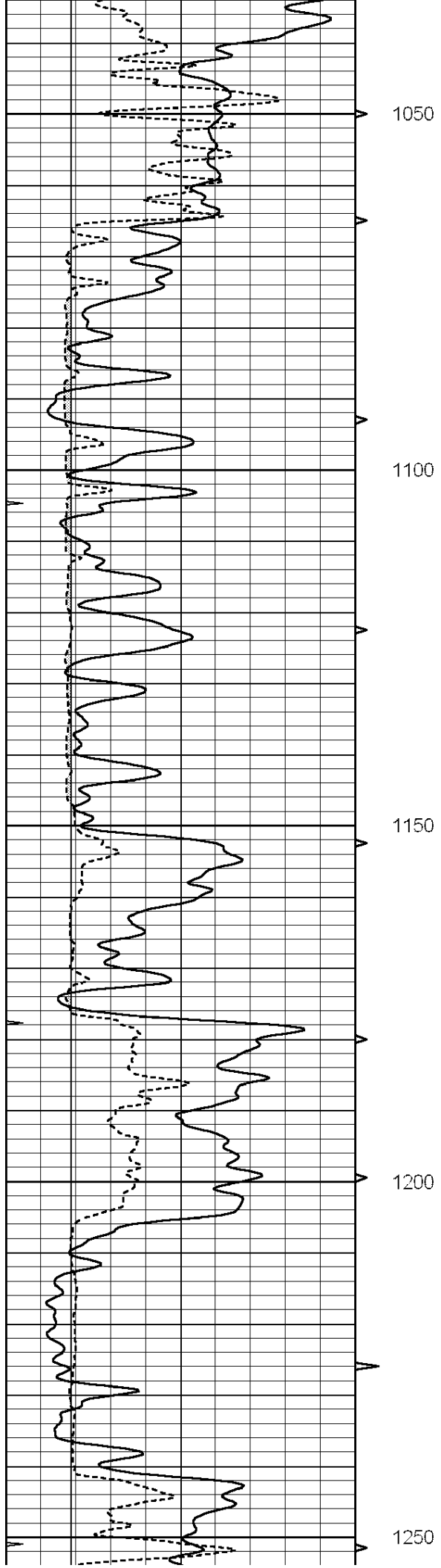
0	GAMMA RAY (GAPI)	150	ABHV	140	DELTA TIME (usec/ft)	40
6	CALIPER (in)	16	10 (ft3)	0	30	SONIC POROSITY (pu)
0	MINMK	20	TBHV	0	ITT (msec)	20
			0 (ft3)	10		

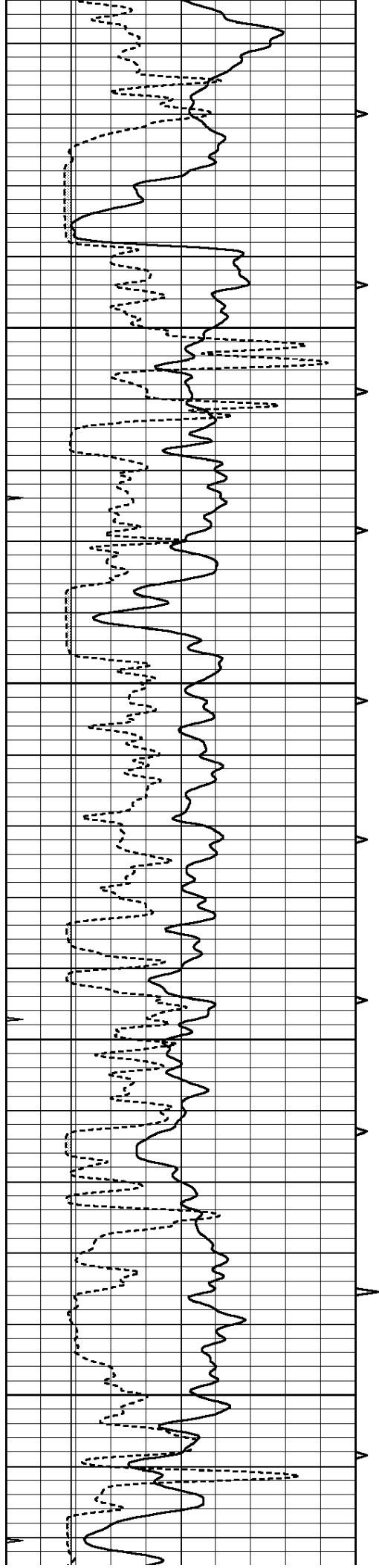










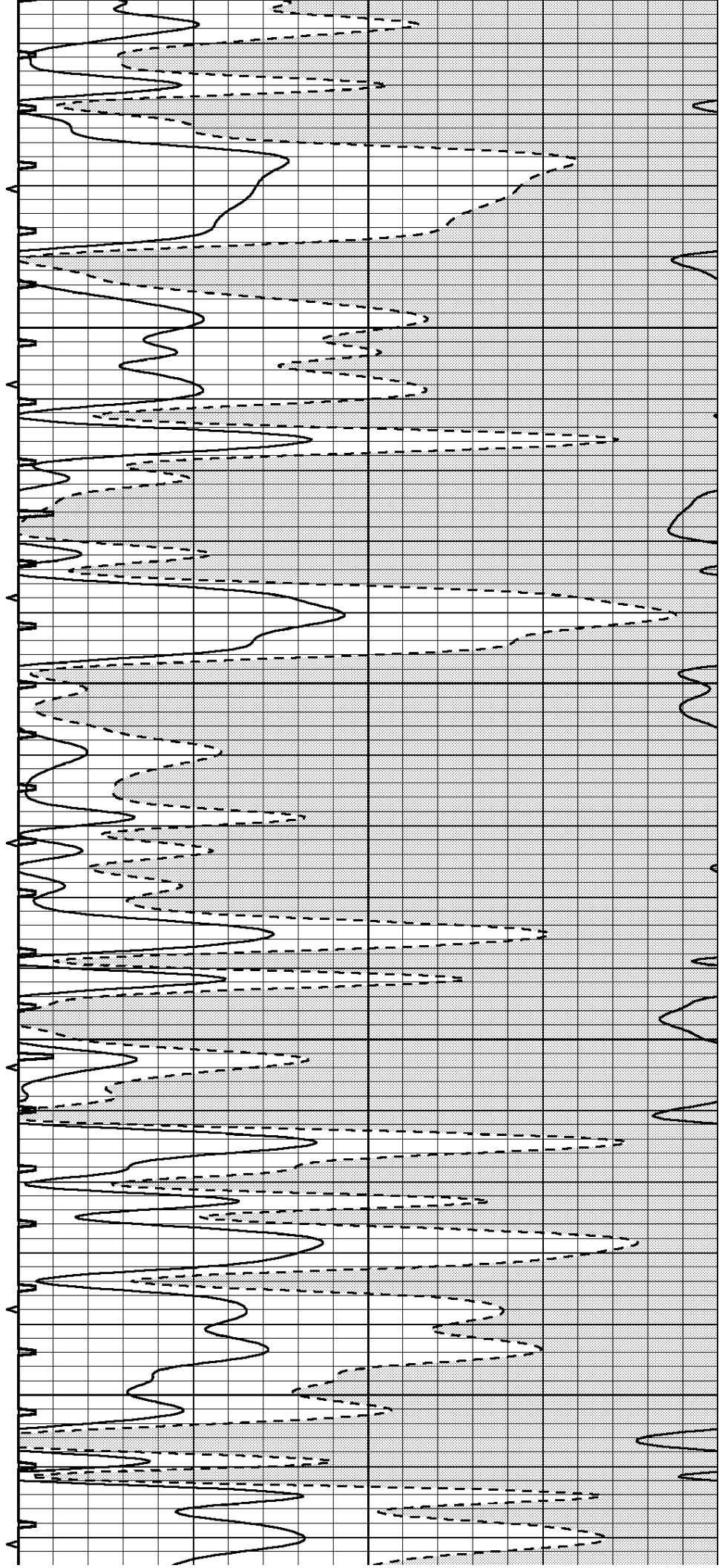


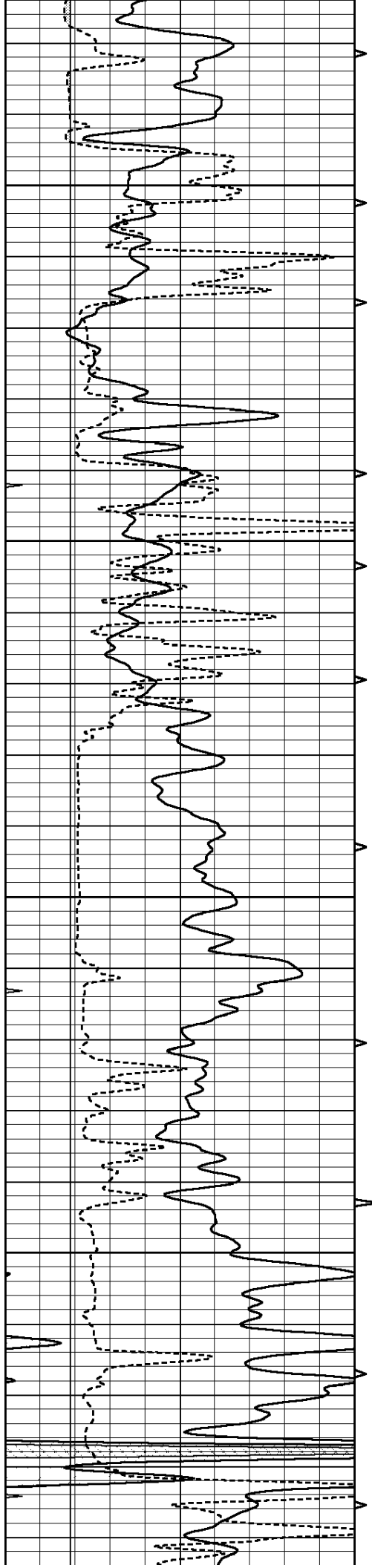
1300

1350

1400

1450



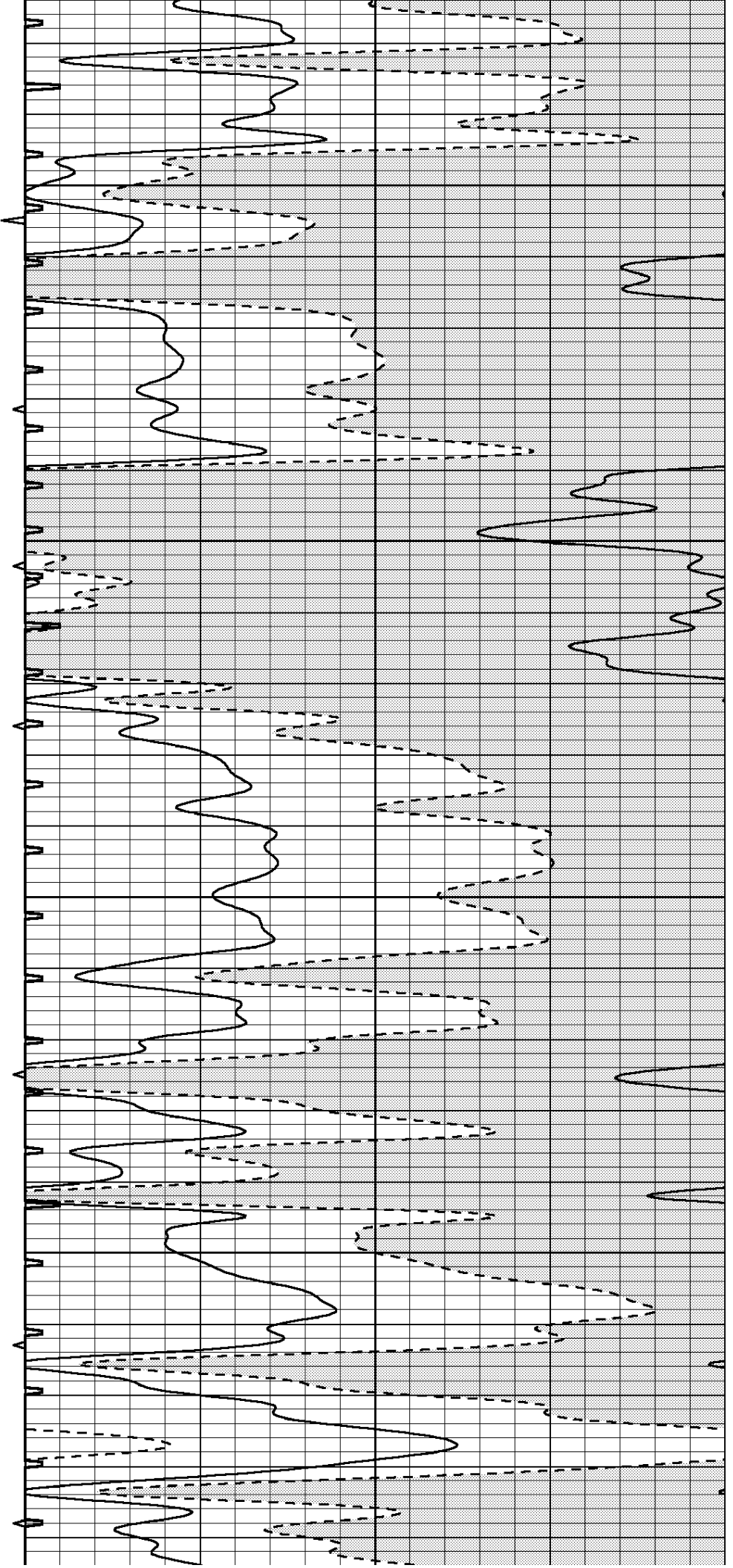


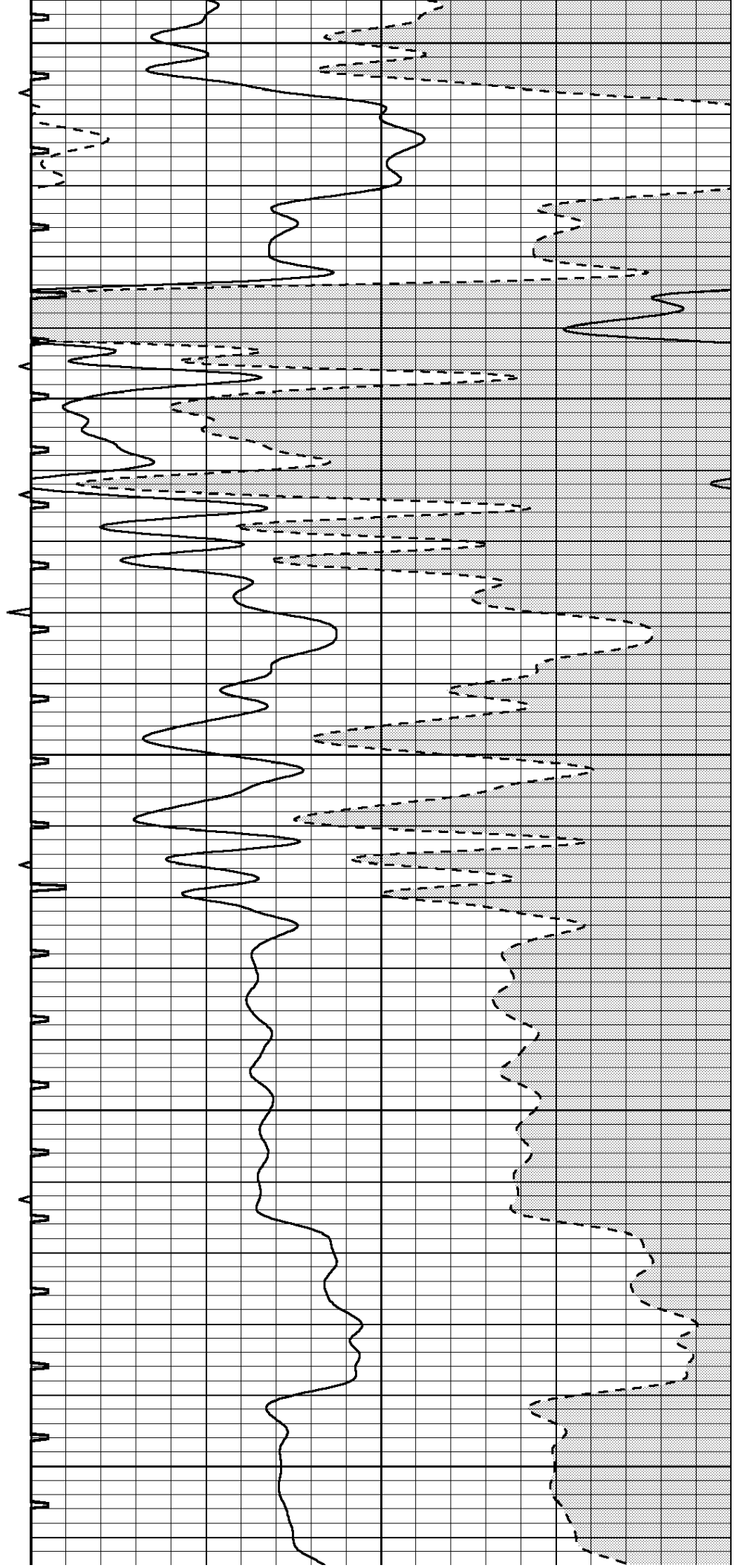
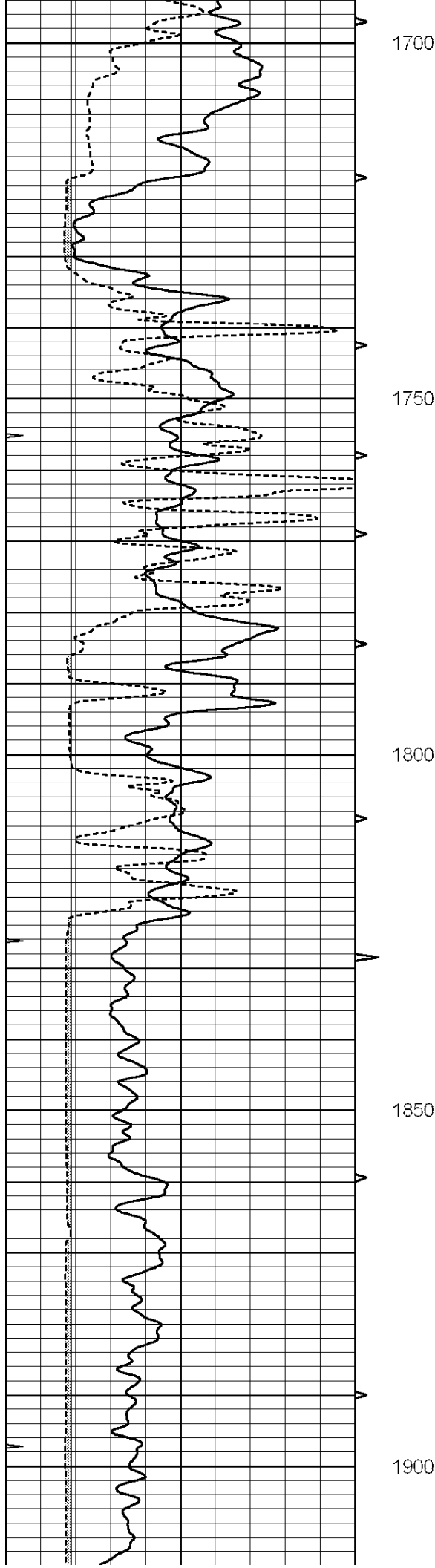
1500

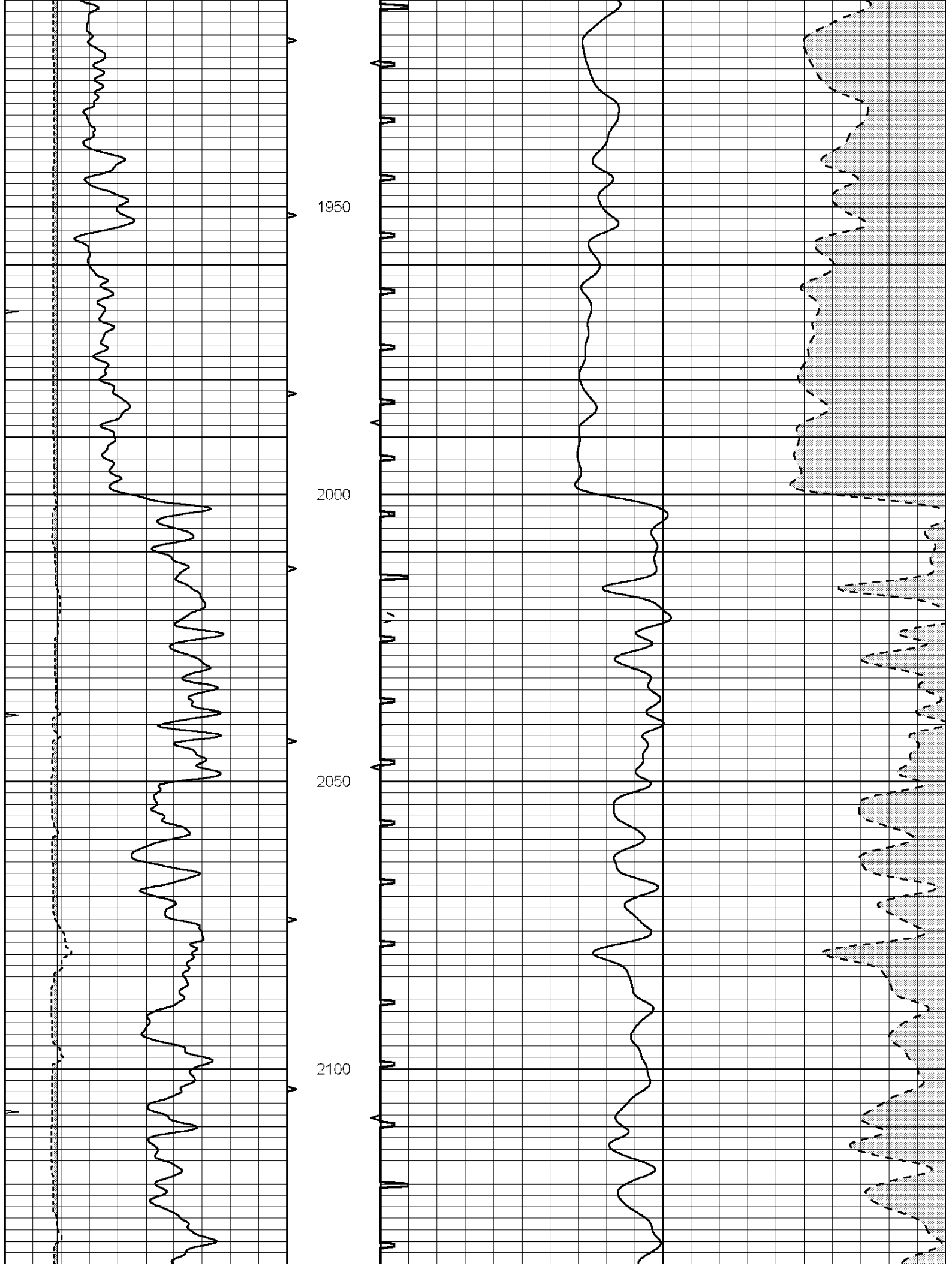
1550

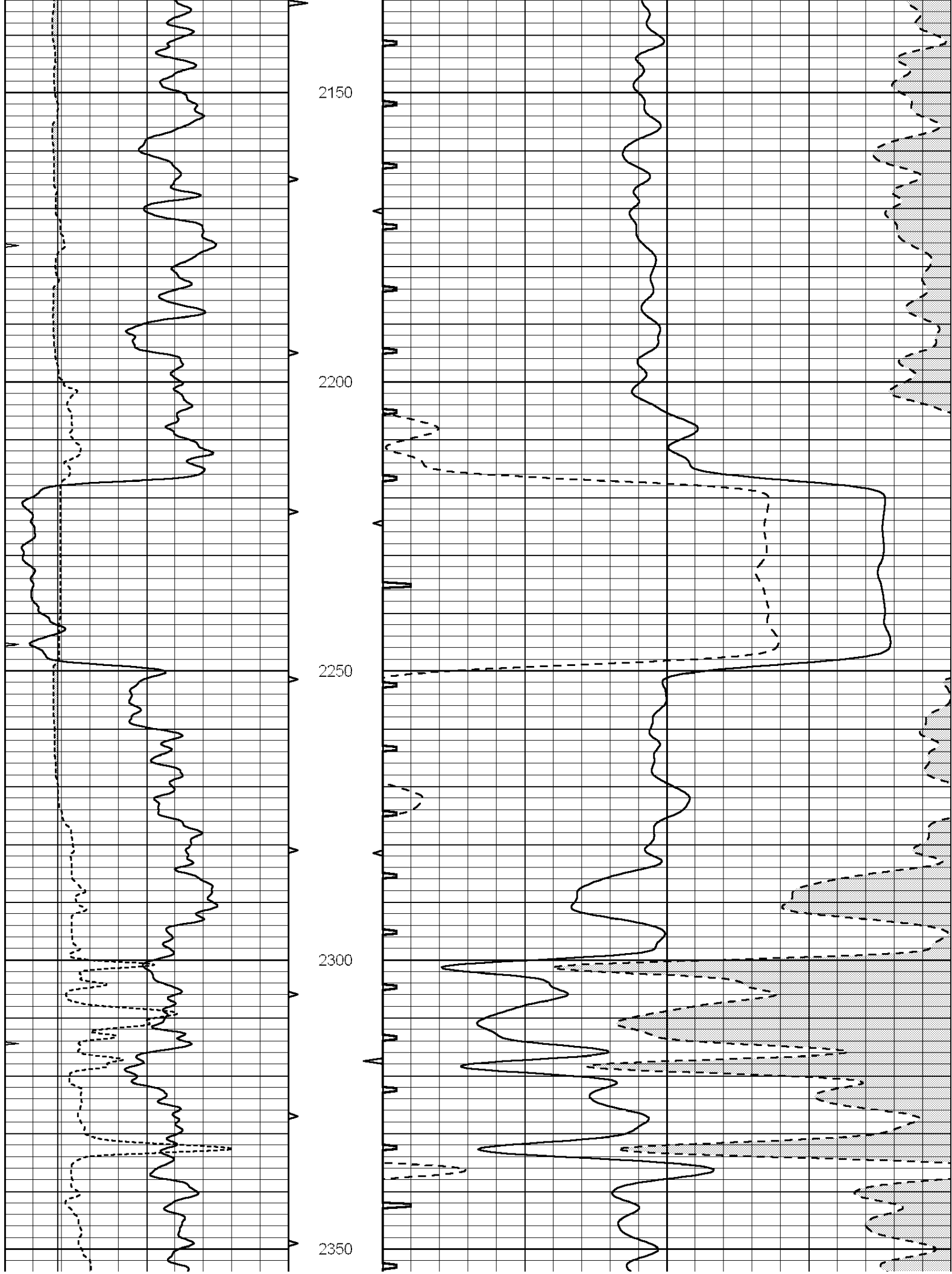
1600

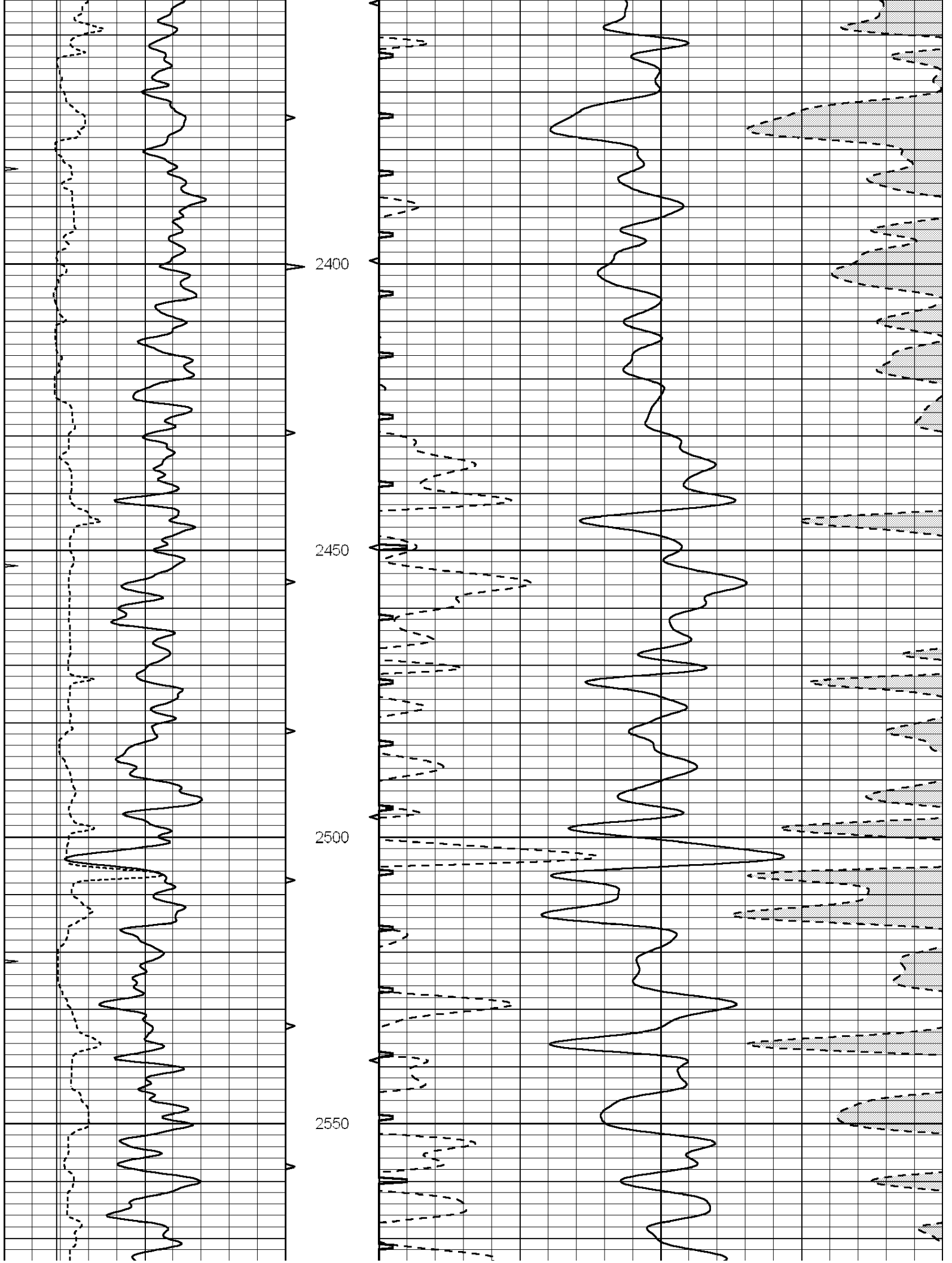
1650

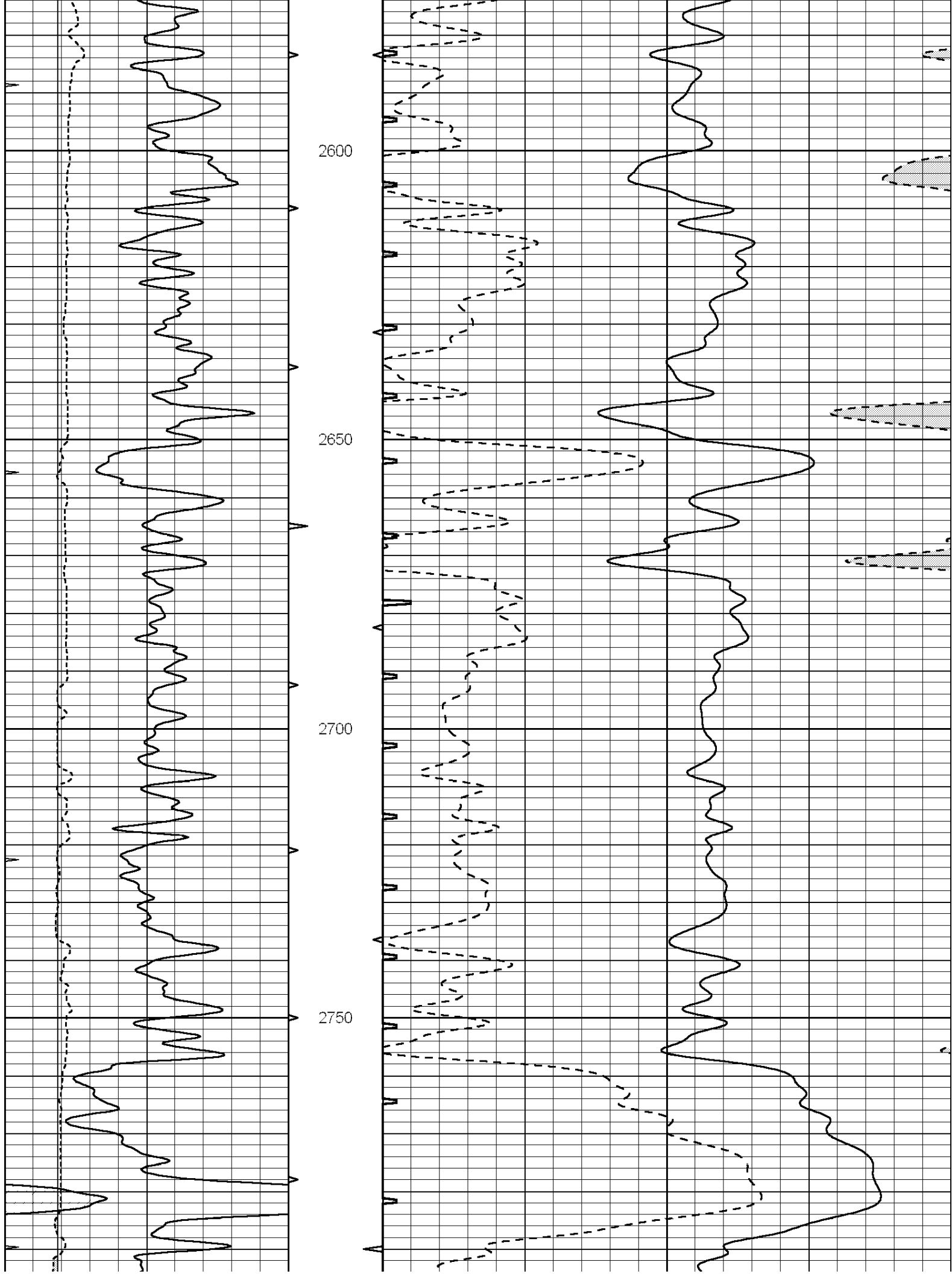


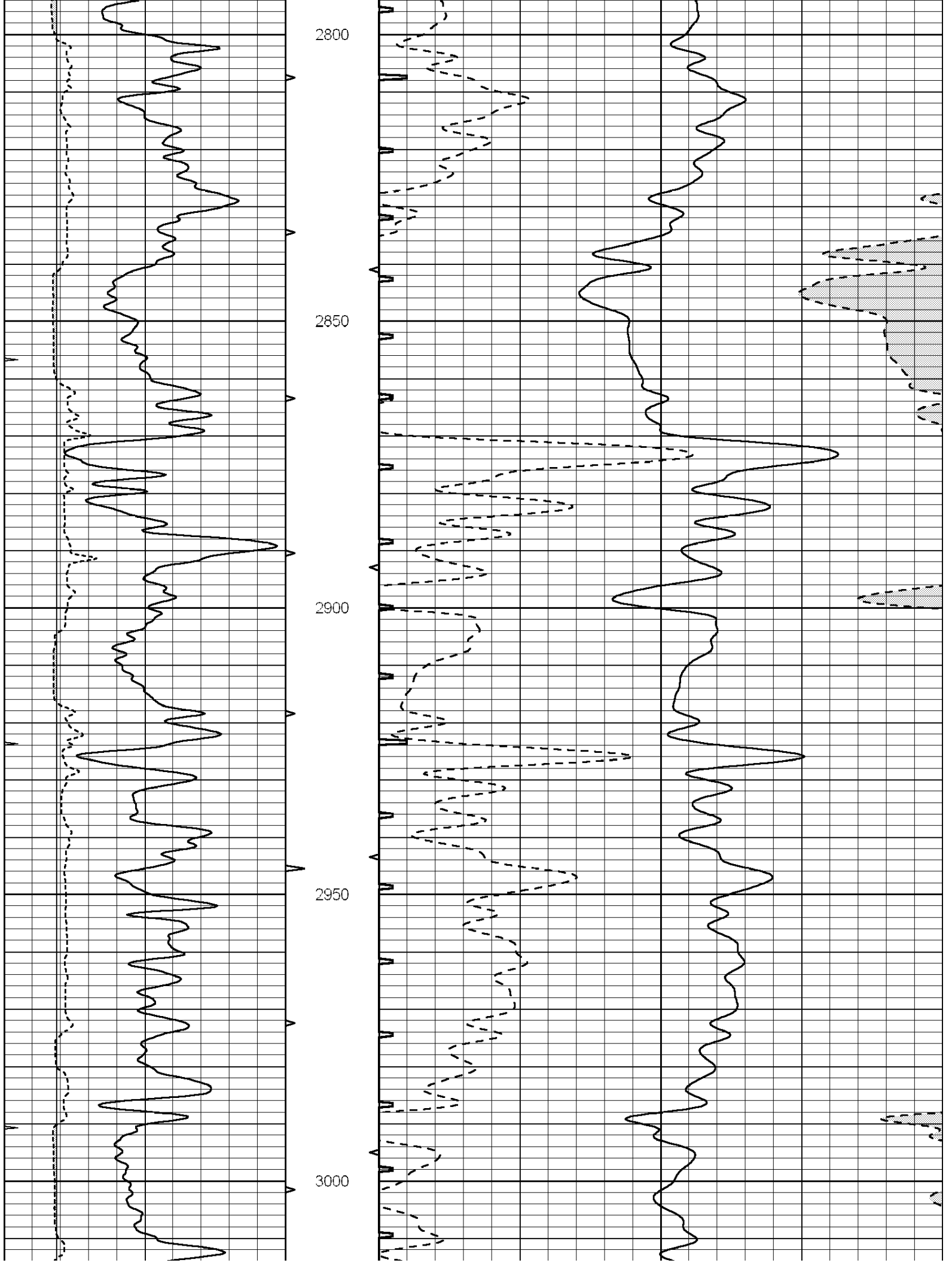


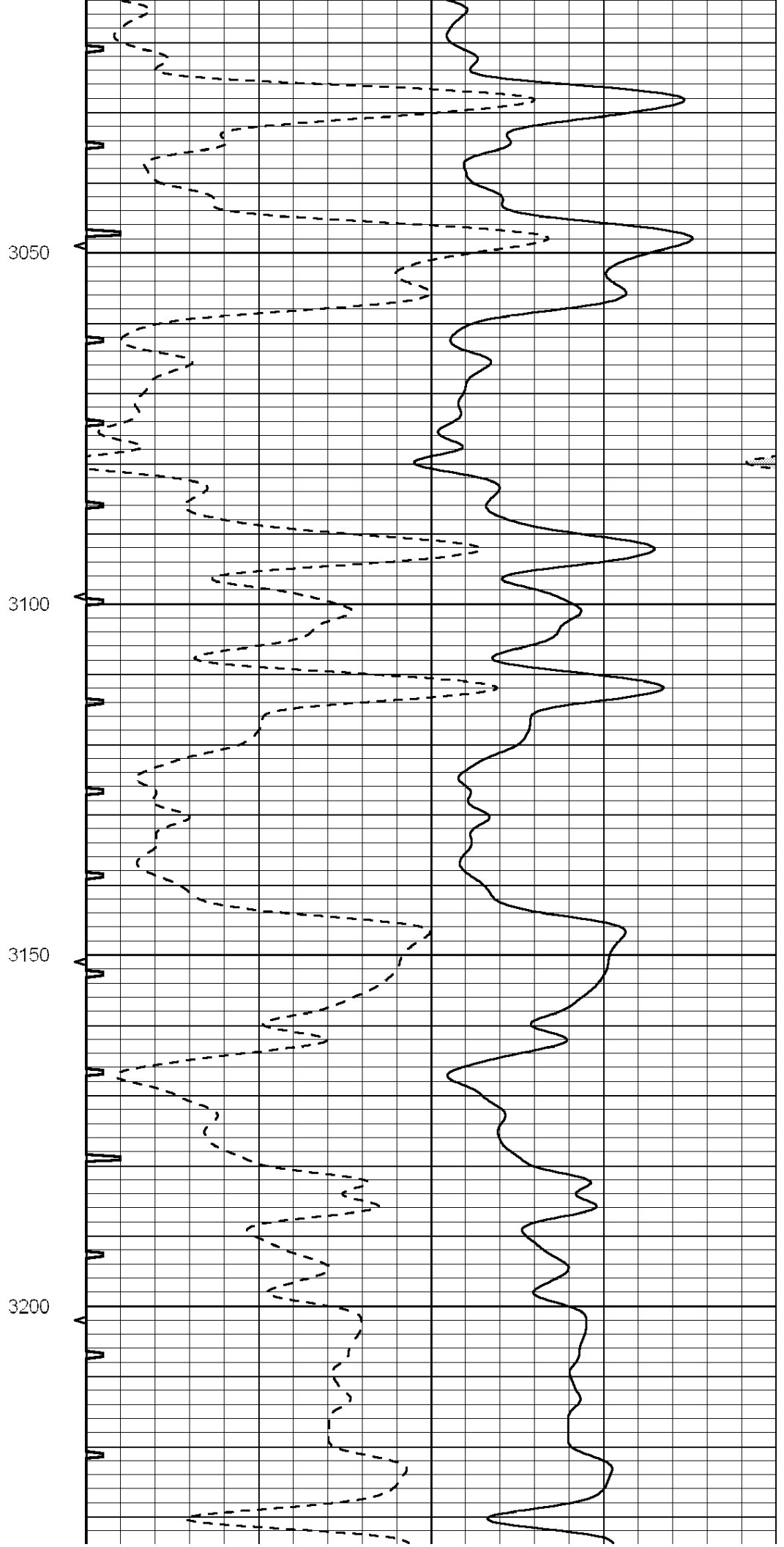
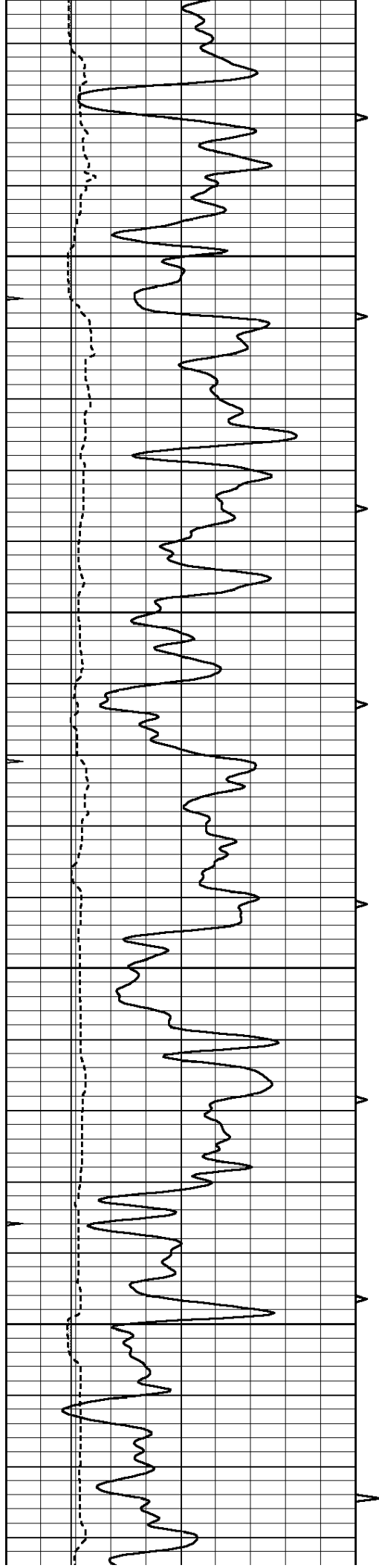


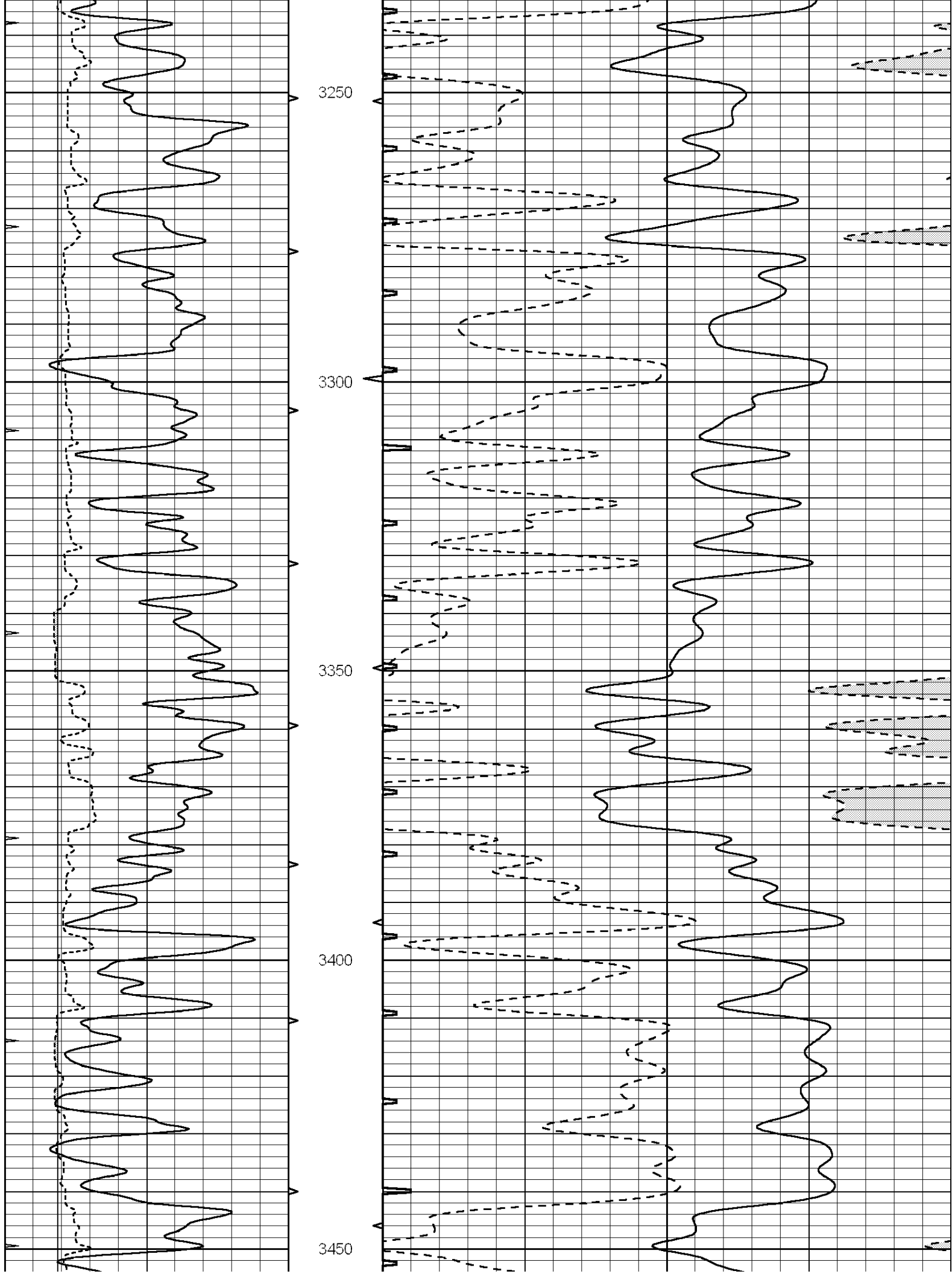


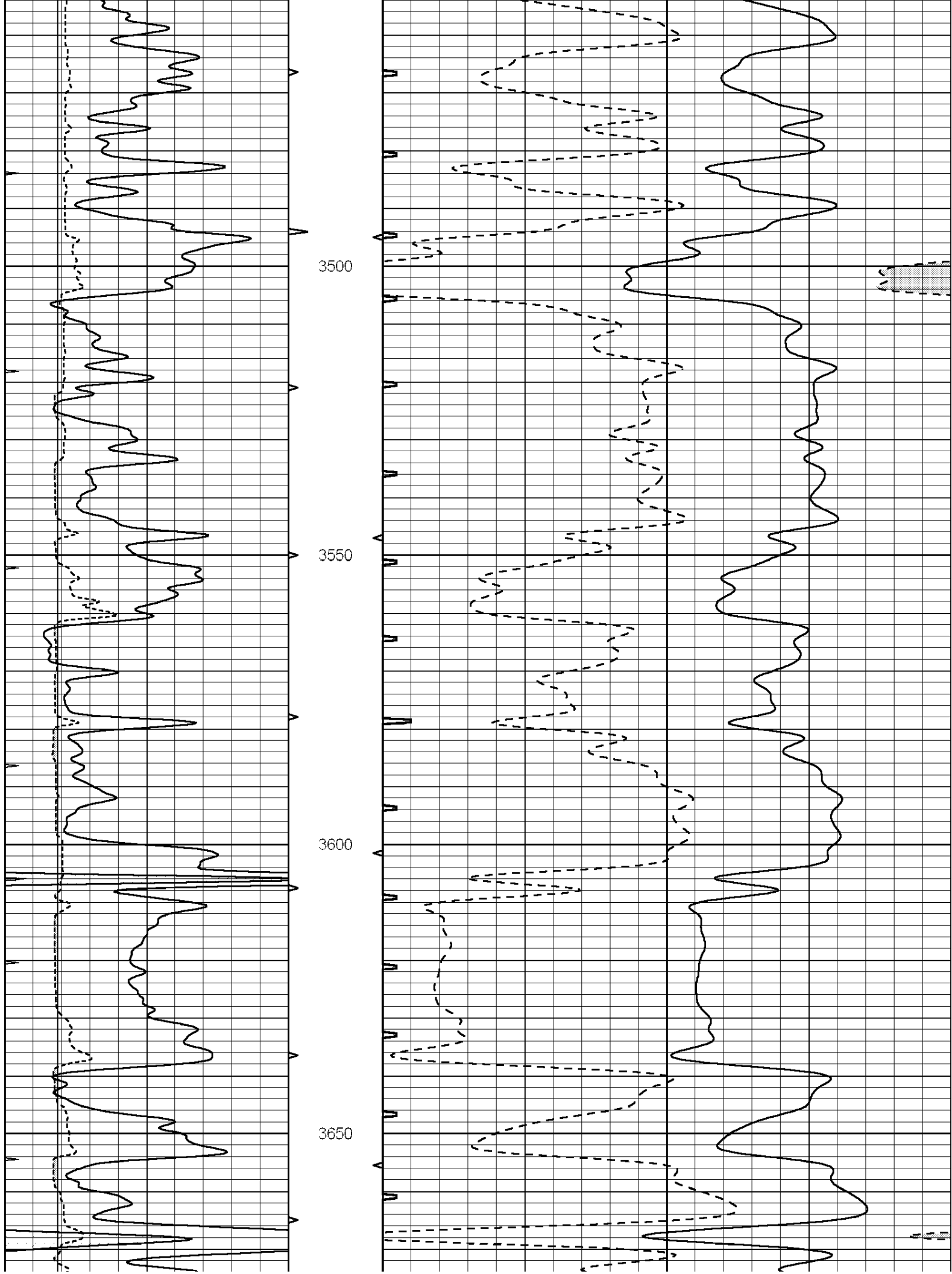


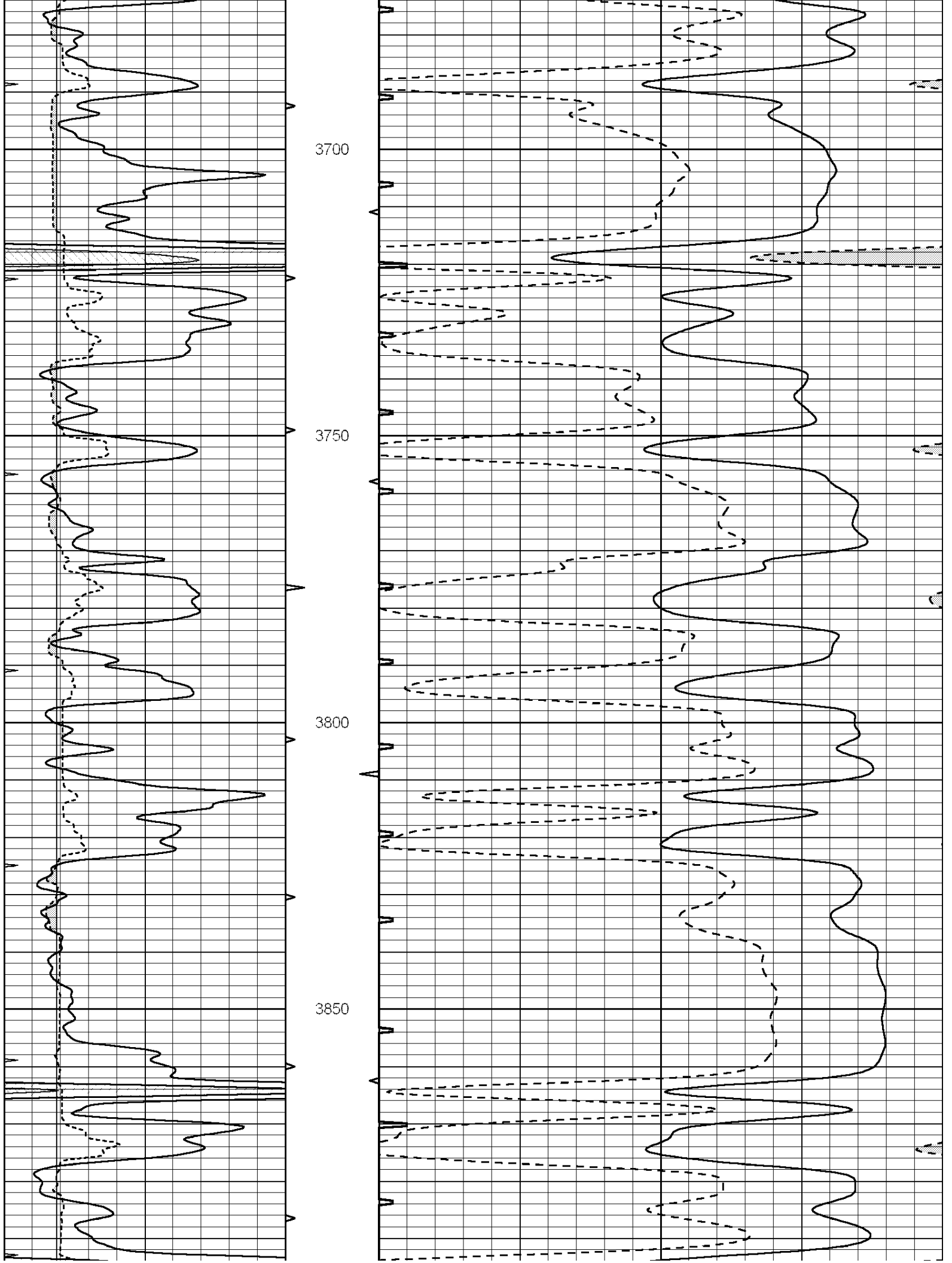


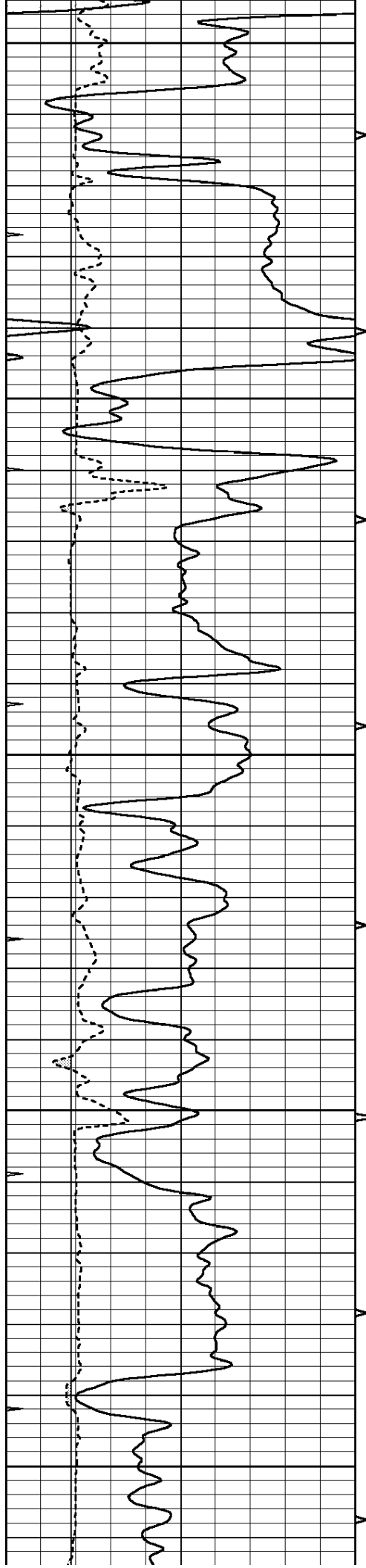












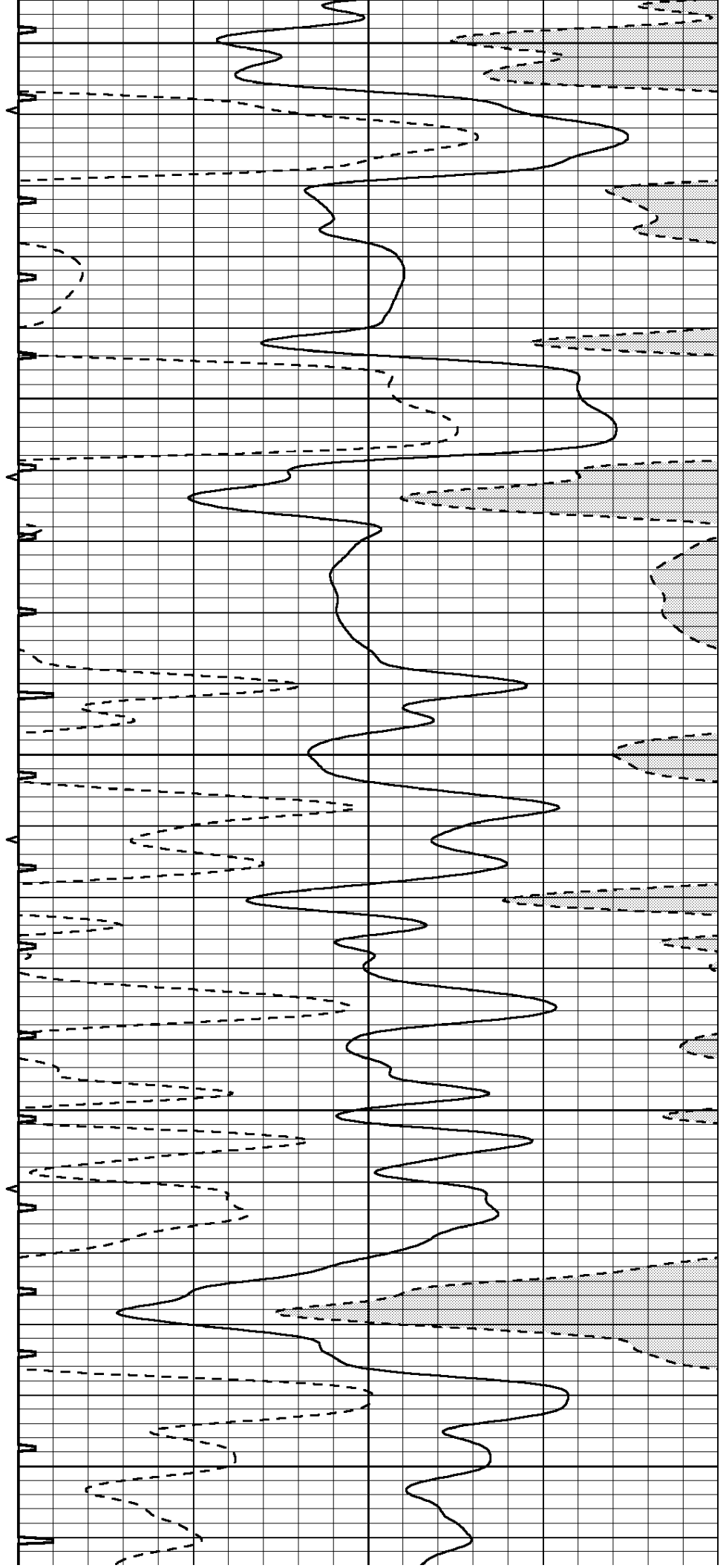
3900

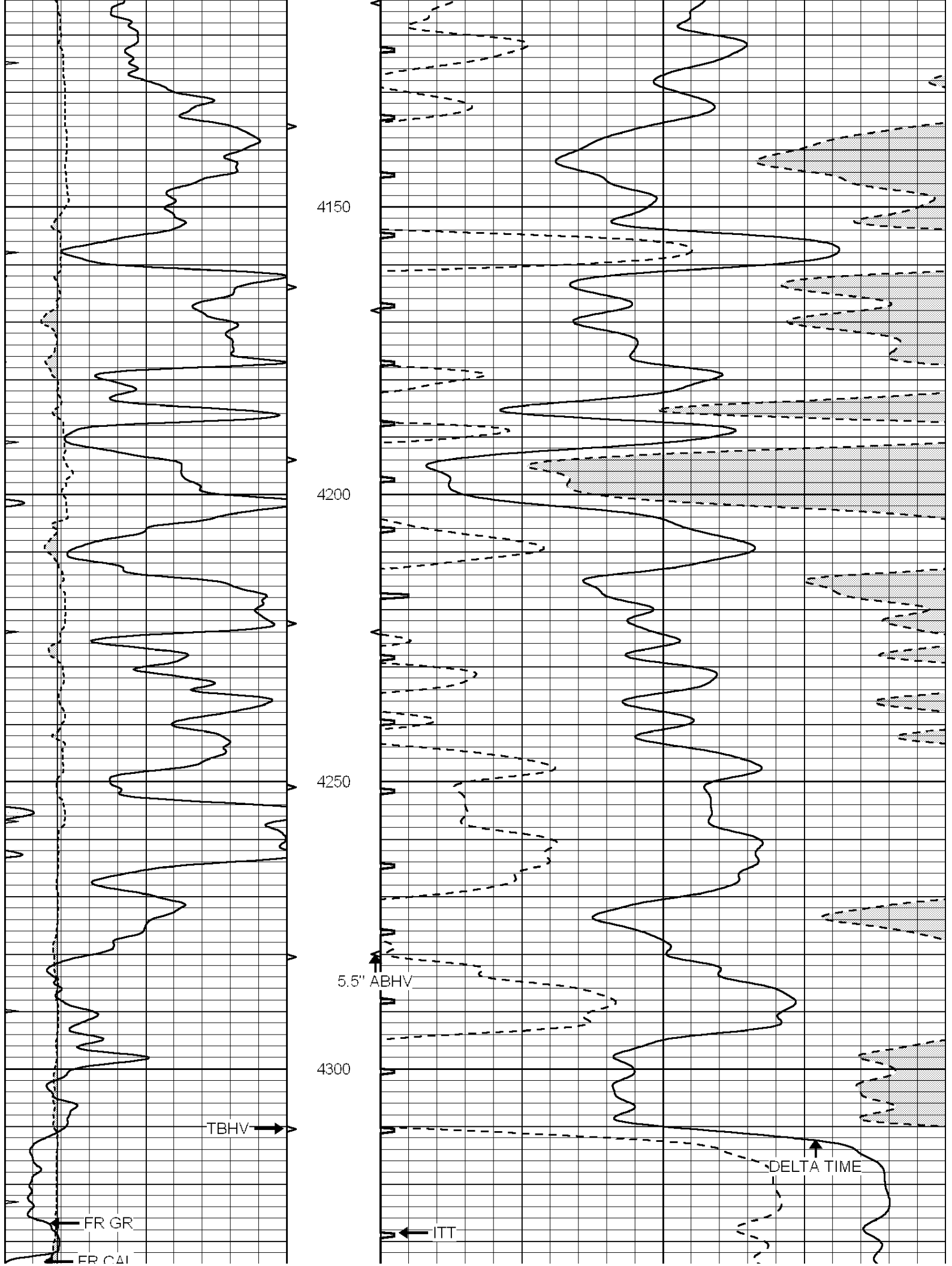
3950

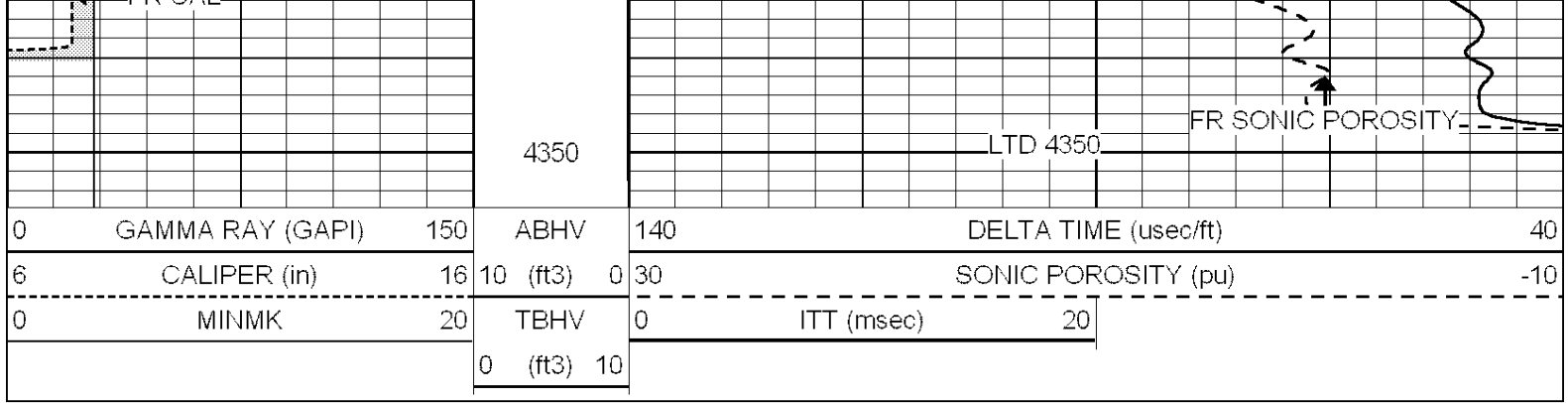
4000

4050

4100

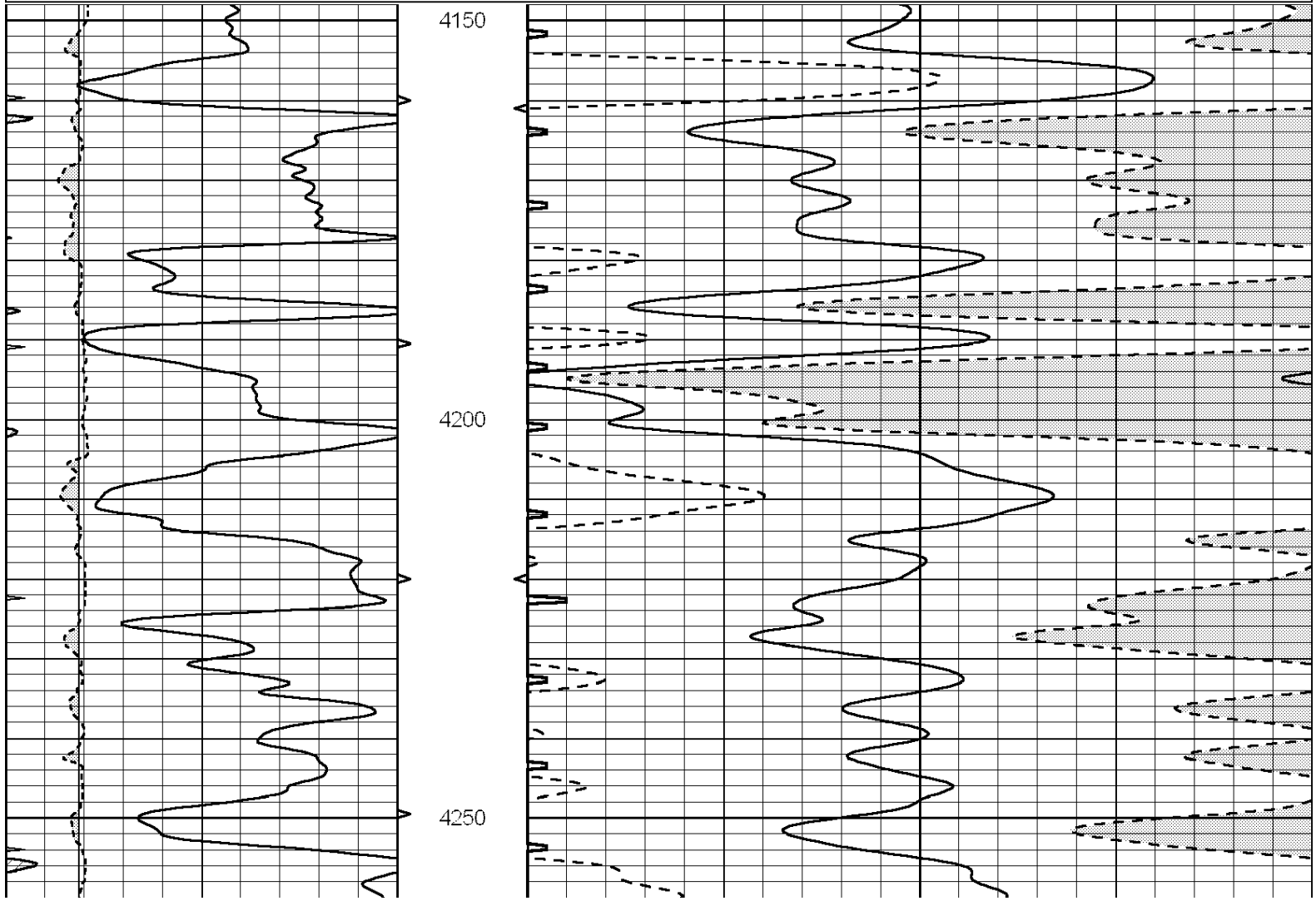
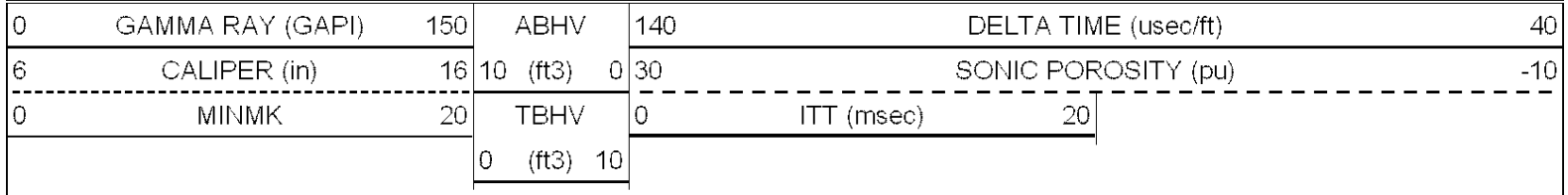


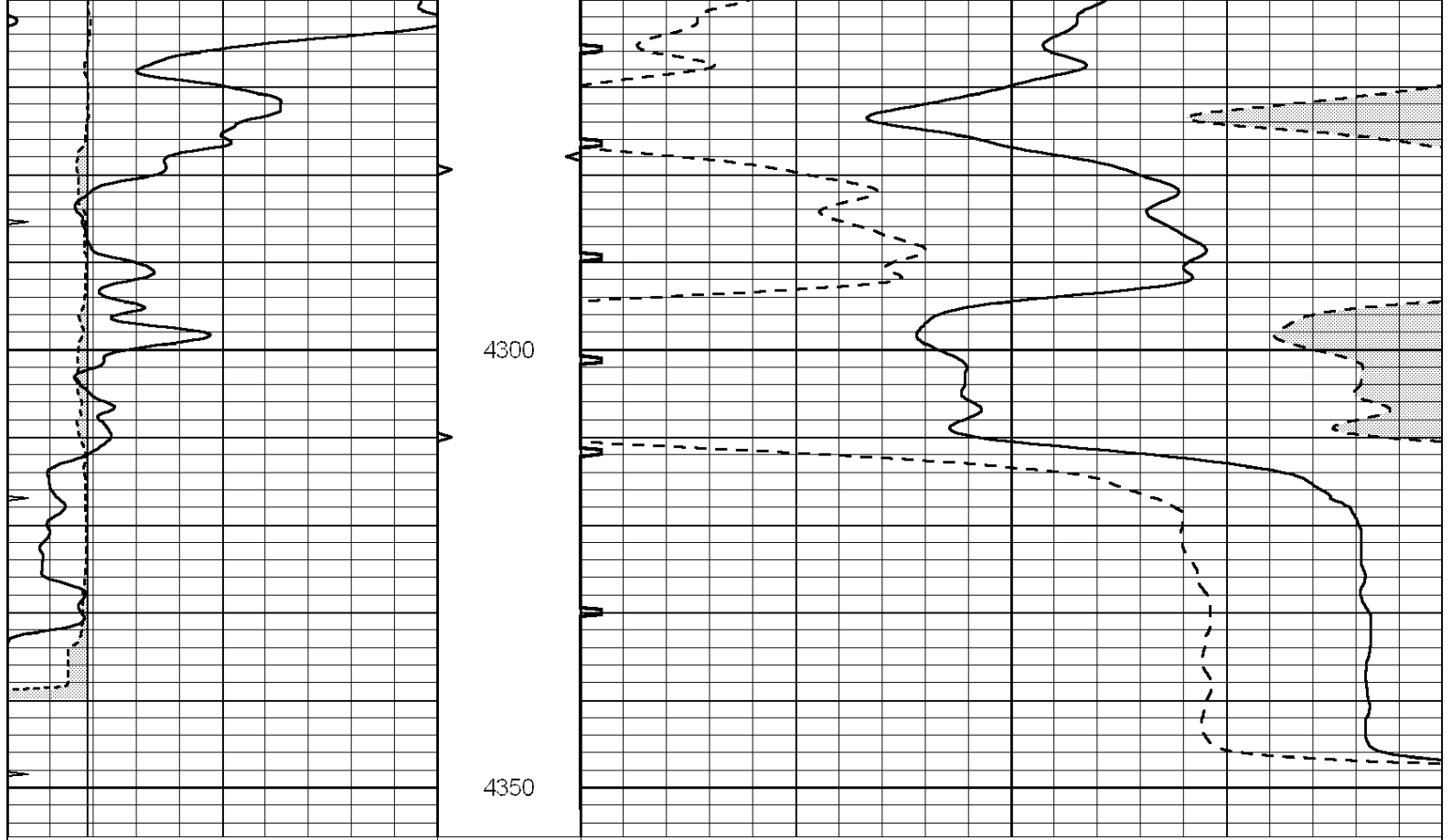




REPEAT SECTION

Database File: 25877pe.db
 Dataset Pathname: pass5.4
 Presentation Format: slt
 Dataset Creation: Thu Sep 11 08:12:43 2014
 Charted by: Depth in Feet scaled 1:240





0	GAMMA RAY (GAPI)	150	ABHV	140	DELTA TIME (usec/ft)	40	
6	CALIPER (in)	16	10 (ft3)	0	30	SONIC POROSITY (pu)	-10
0	MINMK	20	TBHV	0	ITT (msec)	20	
			0 (ft3)	10			