



Pioneer Energy Services

Microresistivity Log

API No.	15-135-25,826-00-00	
Company	American Warrior, Inc.	
Well	Whipple E No. 1-9	
Field	Charmin	
County	Ness	State
		Kansas
Location	1018' FSL & 1899' FWL	
Sec: 8	Twp: 18s	Rge: 26w
Permanent Datum	Ground Level	Elevation 2632
Log Measured From	Kelly Bushing	11 Ft. Above Perm. Datum
Drilling Measured From	Kelly Bushing	K.B. 2643 D.F. 2632 G.L. 2632
Other Services	CNL/CDL DIL	

Date	11/21/2017
Run Number	Two
Depth Driller	4760
Depth Logger	4762
Bottom Logged Interval	4761
Top Log Interval	3850
Casing Driller	8.625 @ 230
Casing Logger	230
Bit Size	7.875
Type Fluid in Hole	Chemical
Salinity, ppm CL	3400
Density / Viscosity	9.3 62
pH / Fluid Loss	10.5 8.0
Source of Sample	Flowline
Rm @ Meas. Temp	.75 @ 60
Rmf @ Meas. Temp	.56 @ 60
Rmc @ Meas. Temp	1.01 @ 60
Source of Rmf / Rmc	Charts
Rm @ BHT	.36 @ 124
Operating Rig Time	3.5 Hours
Max Rec. Temp. F	124
Equipment Number	108
Location	Hays
Recorded By	D. Fischer
Witnessed By	Luke Thompson

<<< Fold Here >>>

All interpretations are opinions based on inferences from electrical or other measurements and we cannot and do not guarantee the accuracy or correctness of any interpretation, and we shall not, except in the case of gross or willful negligence on our part, be liable or responsible for any loss, costs, damages, or expenses incurred or sustained by anyone resulting from any interpretation made by any of our officers, agents or employees. These interpretations are also subject to our general terms and conditions set out in our current Price Schedule.

Comments

Thank you for using Log-Tech, Inc.
(785) 625-3858

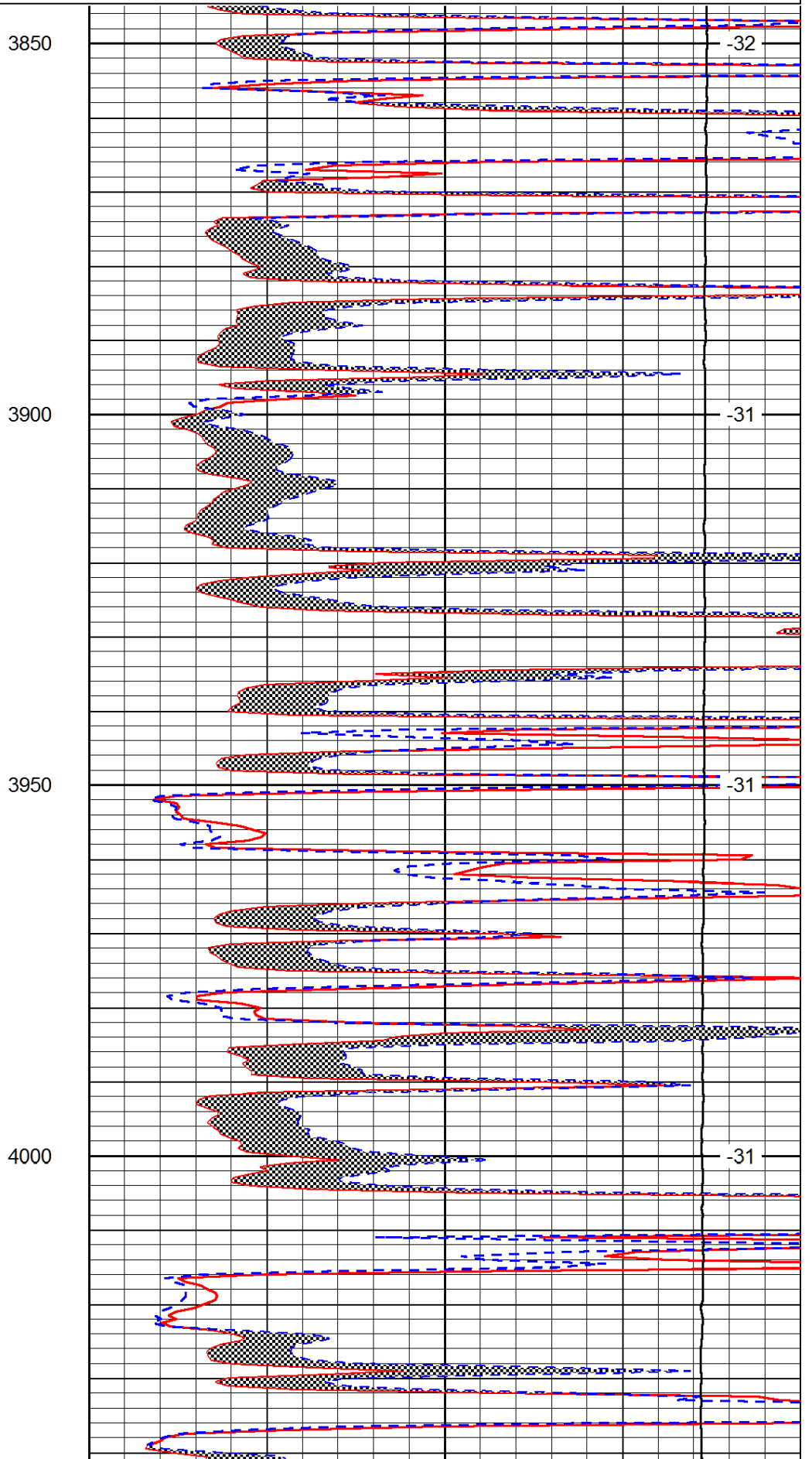
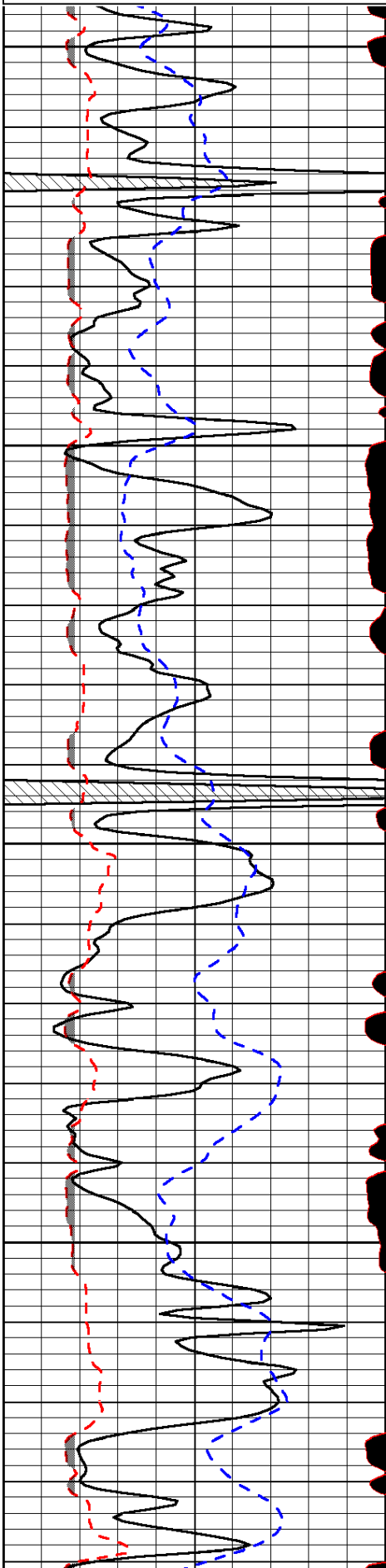
Beeler Ks., 3/4 West, 3 1/4 North, West Into

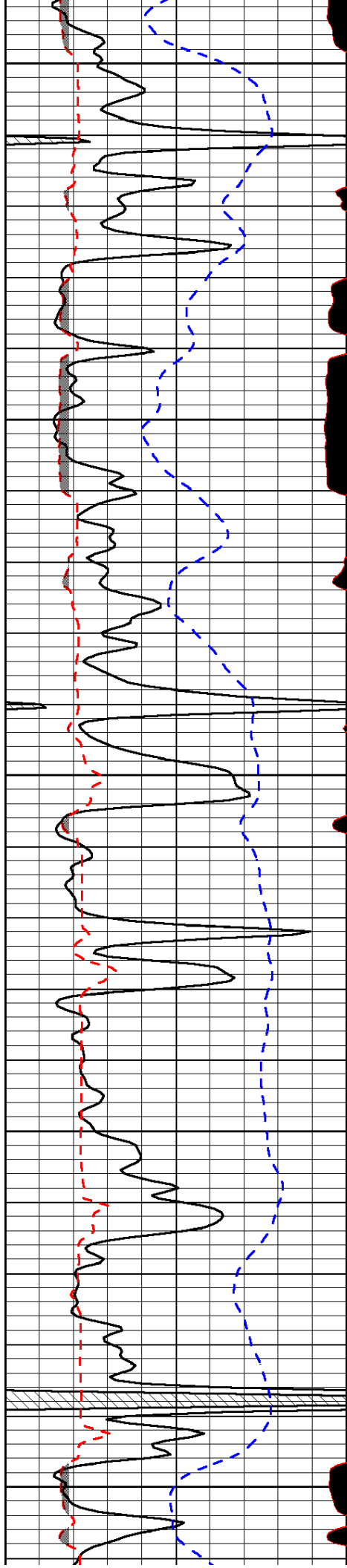
Database File: american_warrior_whipple_e_1-9hd.db
 Dataset Pathname: DIL/amstck
 Presentation Format: micro
 Dataset Creation: Fri Nov 21 21:49:37 2014
 Charted by: Depth in Feet scaled 1:240

0	Gamma Ray	150
6	MCAL (GAPI)	16
2.875	Mud Cake (GAPI)	7.875
-200	SP (mV)	0

0	Micro Inverse 1 X 1	40
0	Micro Normal 2"	40
10000	Line Weight	0

LSPD





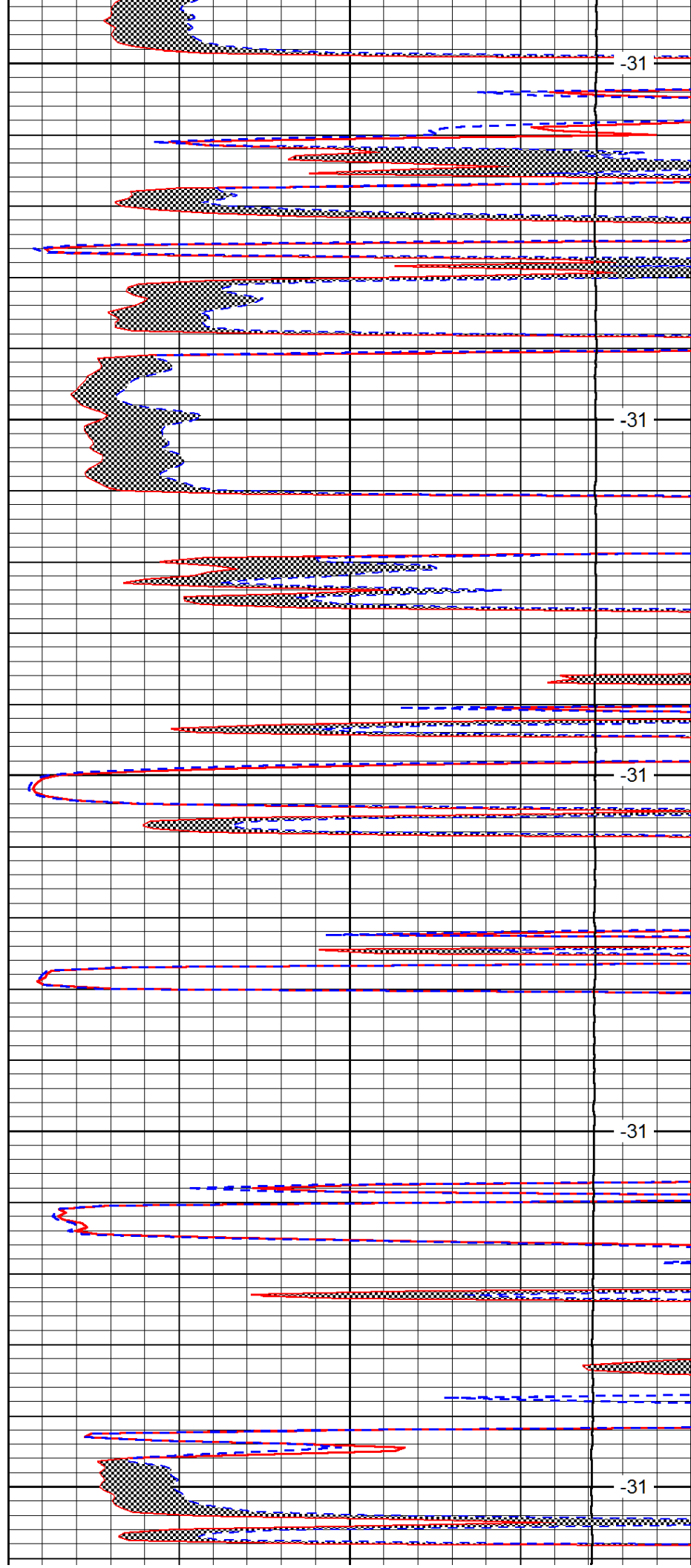
4050

4100

4150

4200

4250



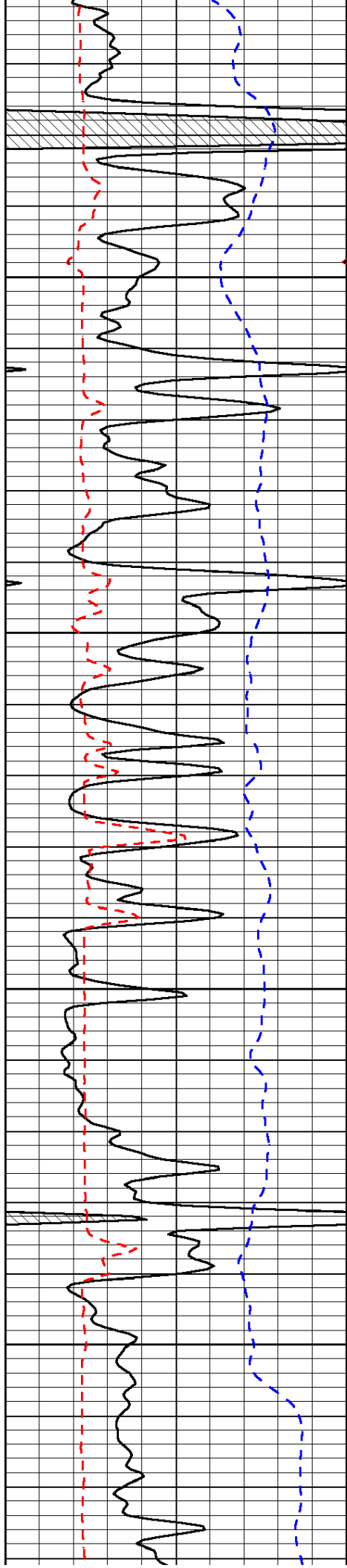
-31

-31

-31

-31

-31

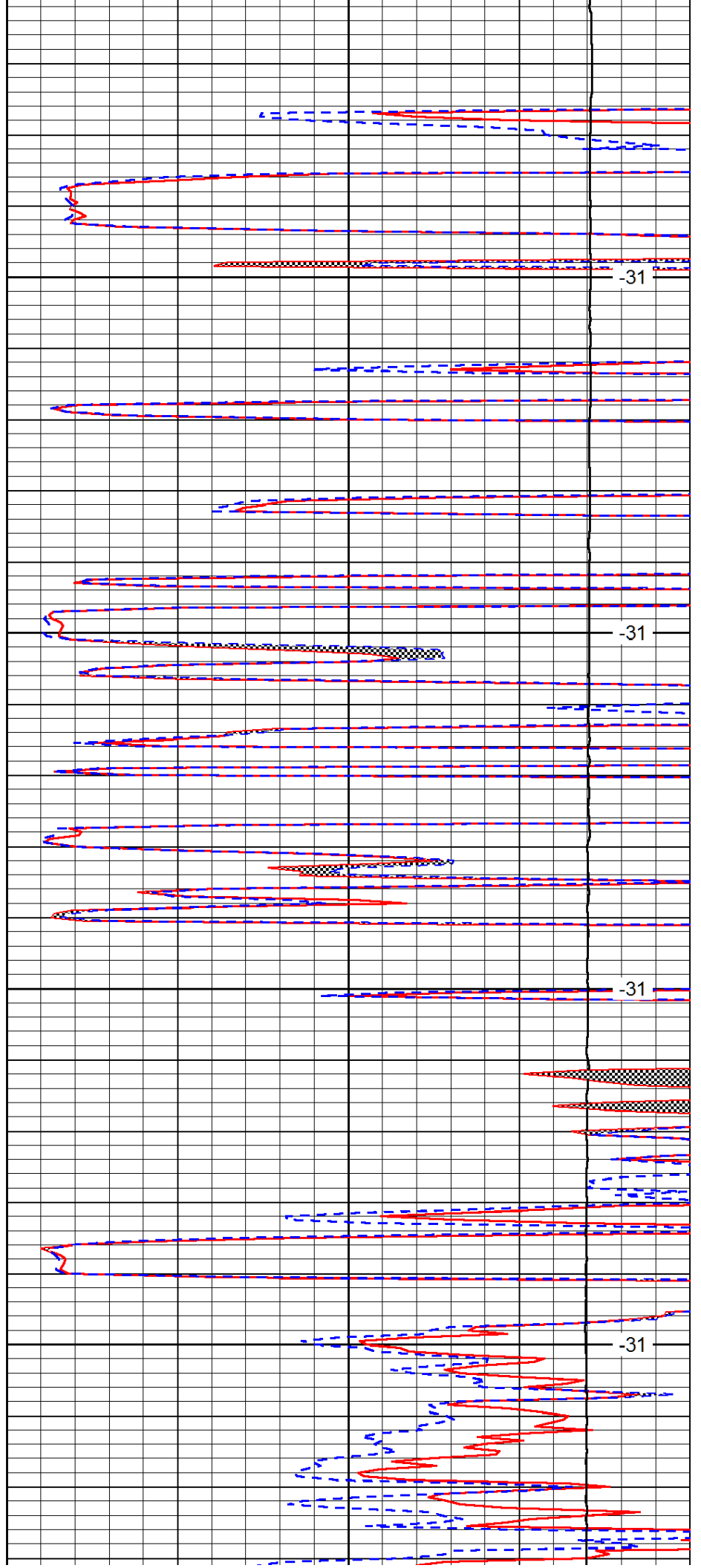


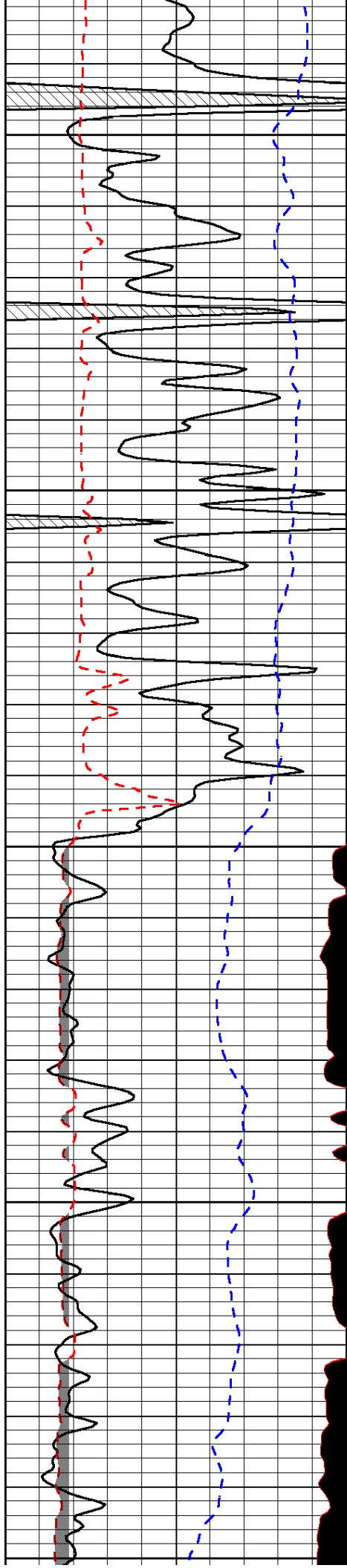
4300

4350

4400

4450





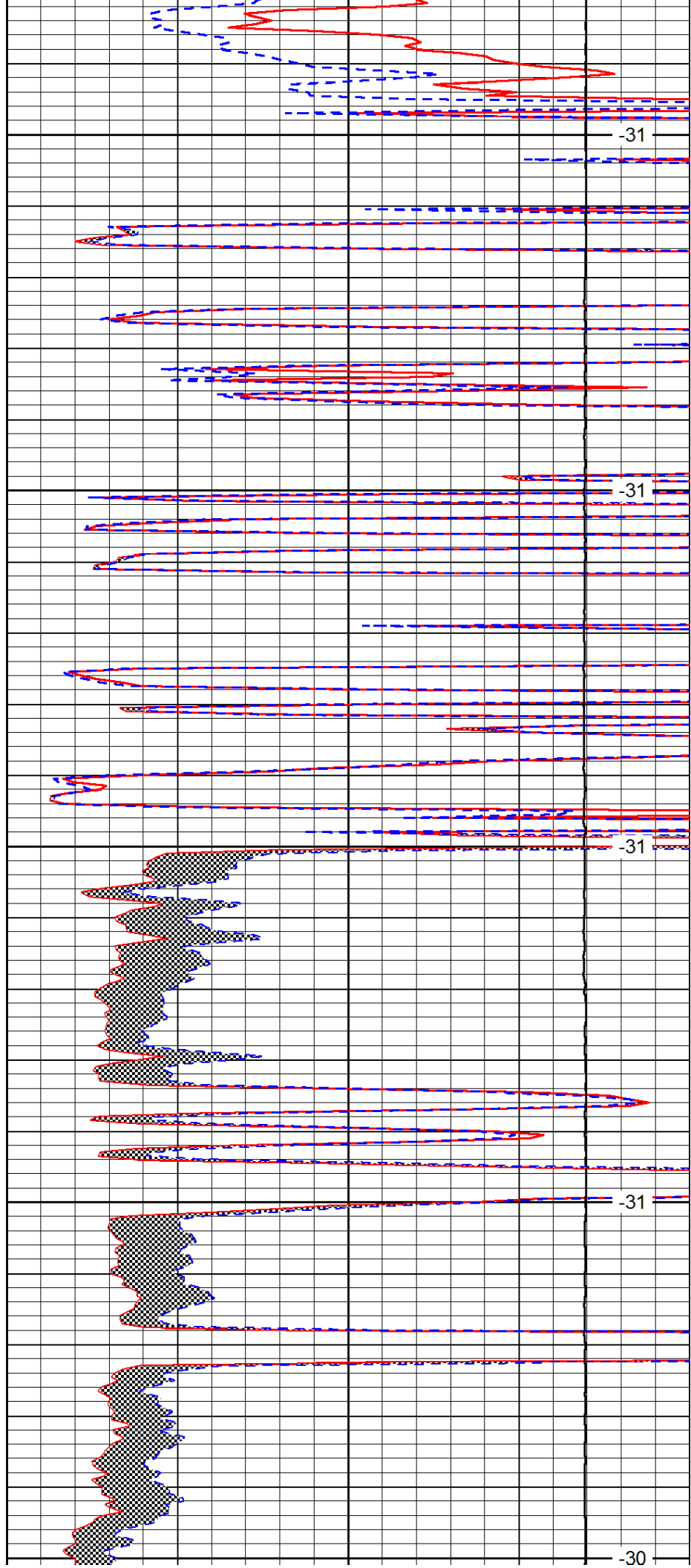
4500

4550

4600

4650

4700



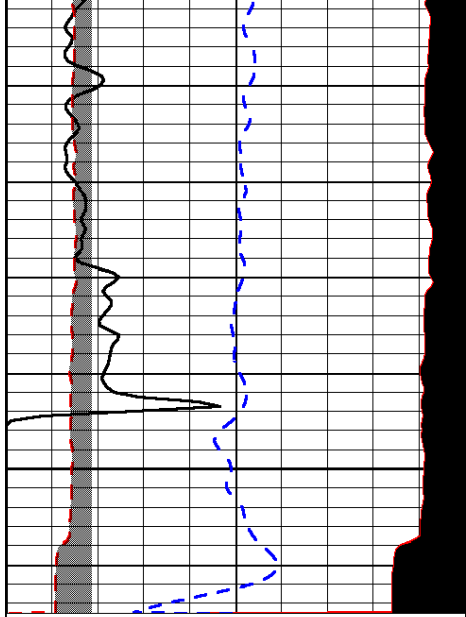
-31

-31

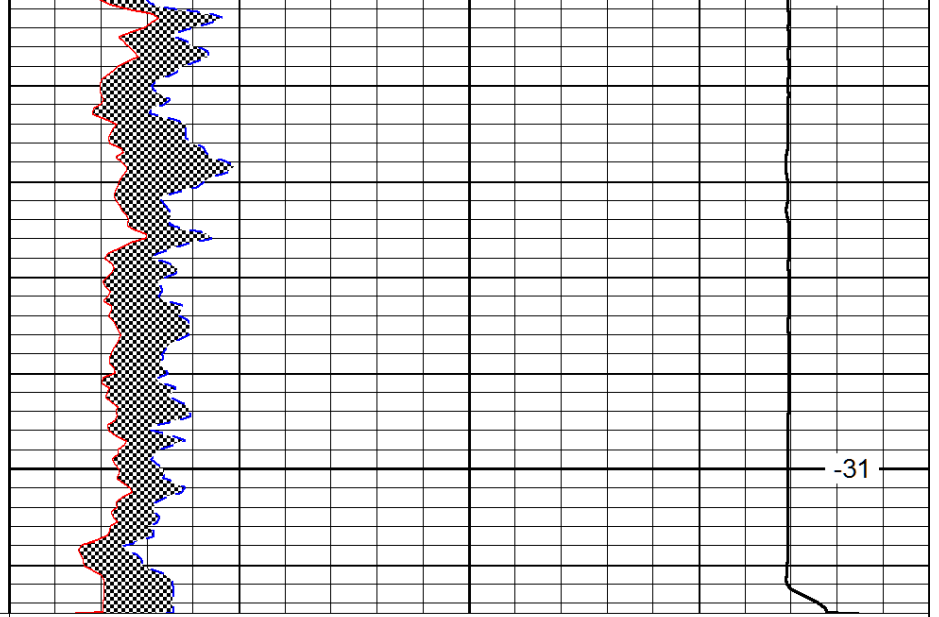
-31

-31

-30



4750



-31

0	Gamma Ray	150
6	MCAL (GAPI)	16
2.875	Mud Cake (GAPI)	7.875
-200	SP (mV)	0

0	Micro Inverse 1 X 1	40
0	Micro Normal 2"	40
10000	Line Weight	0

LSPD