



Pioneer Energy Services

Borehole Compensated Sonic Log

Company Murfin Drilling Company, Inc.
Well Roemer-Bell No.2-1
Field Wildcat
County Gove **State** Kansas
Location 900' FSL & 335' FEL
Sec: 1 **Twp:** 15S **Rge:** 30W
Other Services CNL/CDL MEL/DIL
Elevation

API No. 15-063-22,233-00-00
Permanent Datum Ground Level **Elevation** 2618
Log Measured From Kelly Bushing **11 Ft. Above Perm. Datum**
Drilling Measured From Kelly Bushing
Date 11/17/2014
K.B. 2629
D.F.
G.L. 2618

Run Number	Two
Type Log	BHC Sonic
Depth Driller	4406
Depth Logger	4405
Bottom Logged Interval	4394
Top Logged Interval	200
Type Fluid In Hole	Chemical
Salinity, PPM CL	2,600
Density	9.3
Level	Full
Max. Rec. Temp. F	120
Operating Rig Time	5 Hours
Equipment -- Location	51 Hays
Recorded By	C. Desaire
Witnessed By	Larry Nicholson

Borehole Record		Casing Record				
Run No	Bit From	To	Size	Wgt.	From	To
One	12.25	00	221	8.625	23#	00
Two	7.875	221	TD			221

<<< Fold Here >>>

All interpretations are opinions based on inferences from electrical or other measurements and we cannot and do not guarantee the accuracy or correctness of any interpretation, and we shall not, except in the case of gross or willful negligence on our part, be liable or responsible for any loss, costs, damages, or expenses incurred or sustained by anyone resulting from any interpretation made by any of our officers, agents or employees. These interpretations are also subject to our general terms and conditions set out in our current Price Schedule.

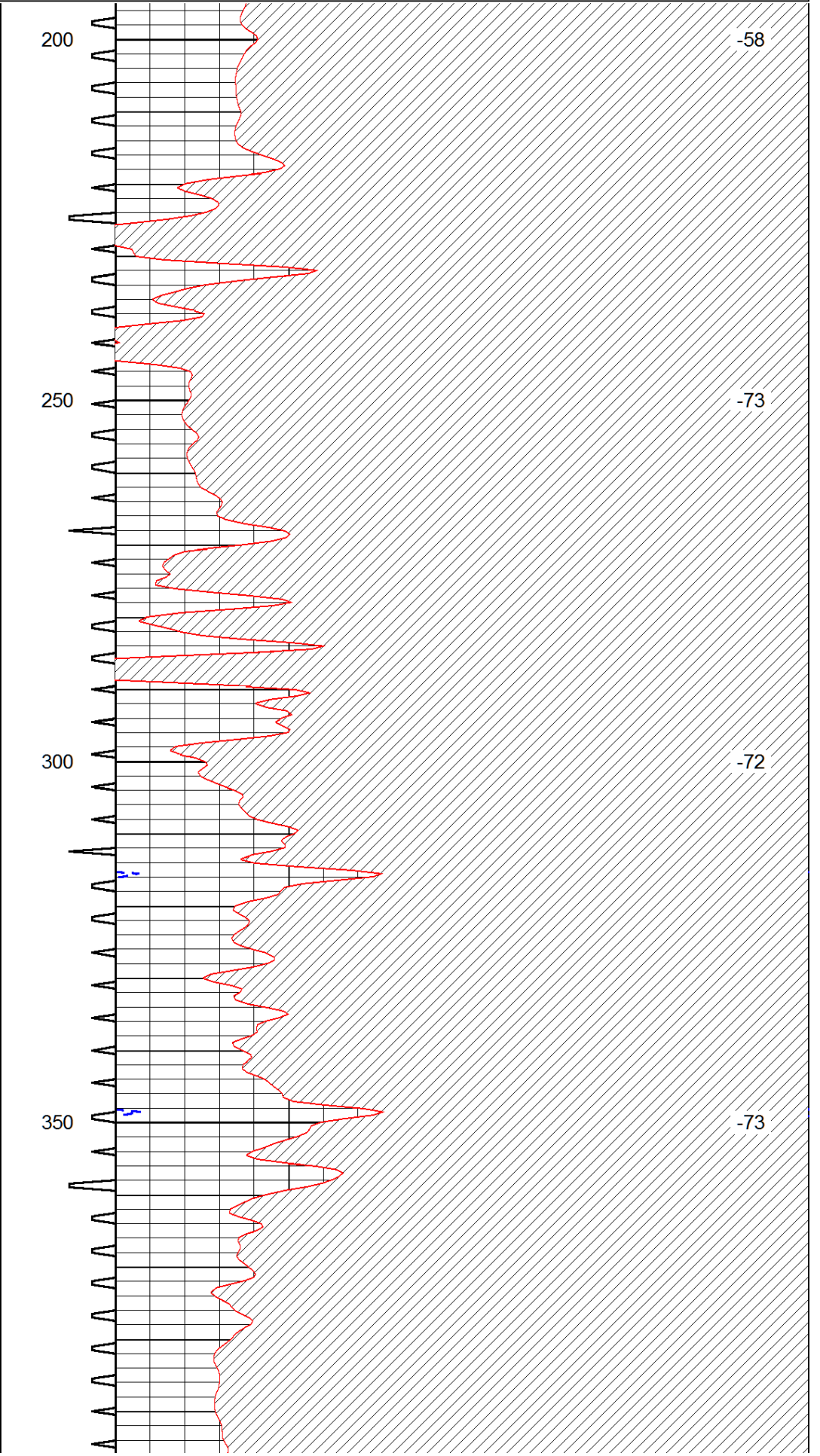
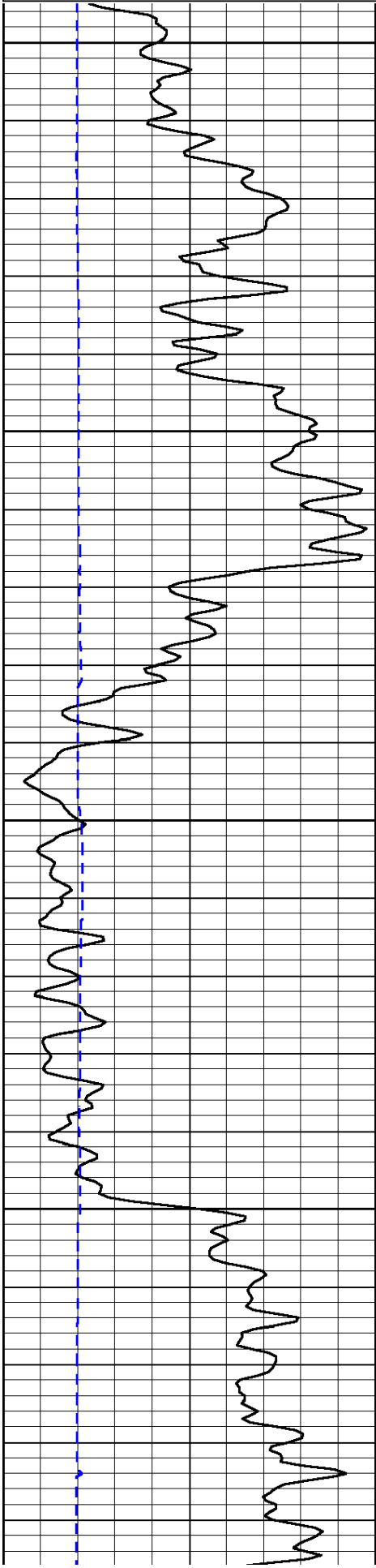
Comments

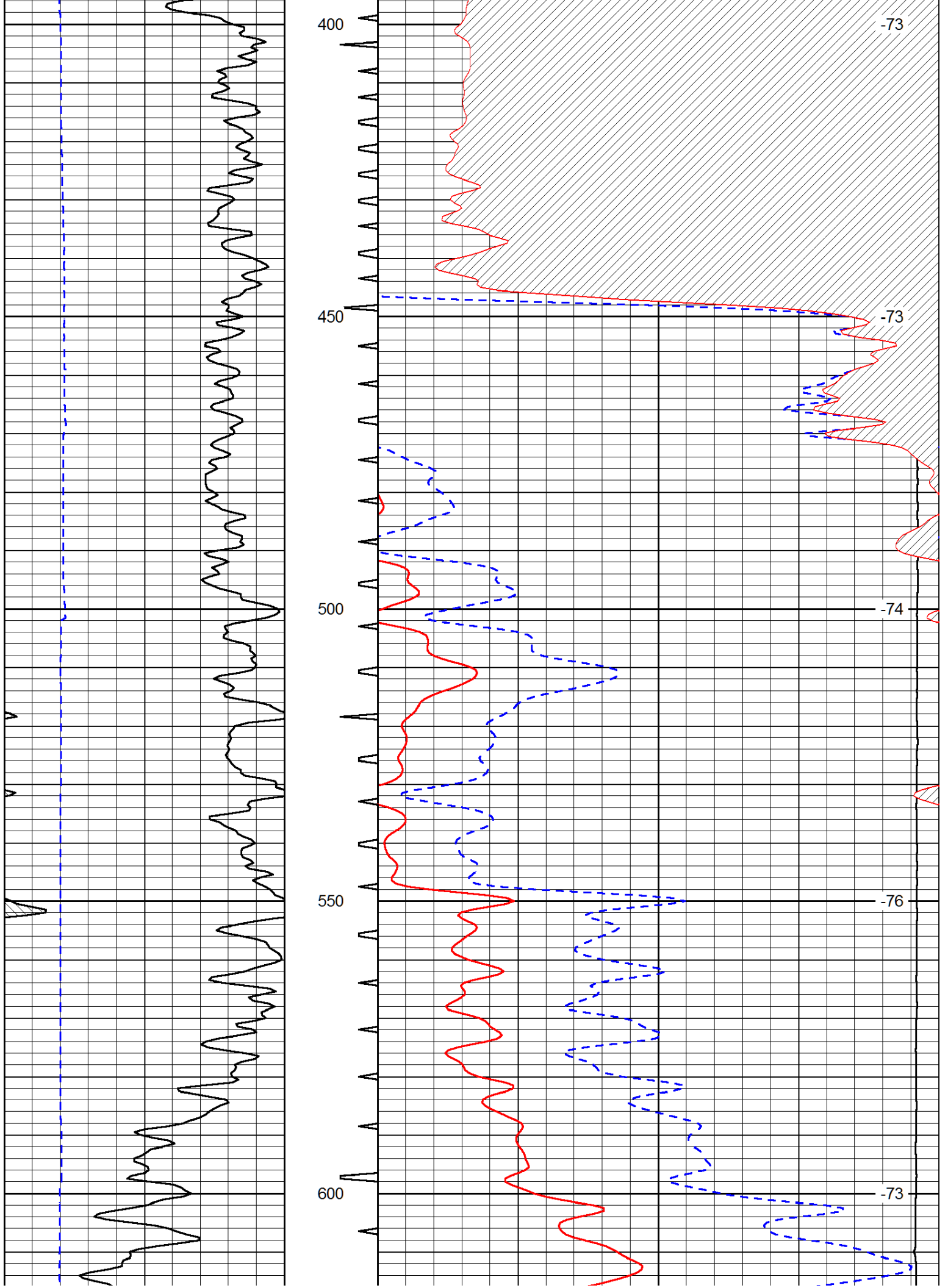
 Thank you for using Log-Tech, Inc.
 (785) 625-3858

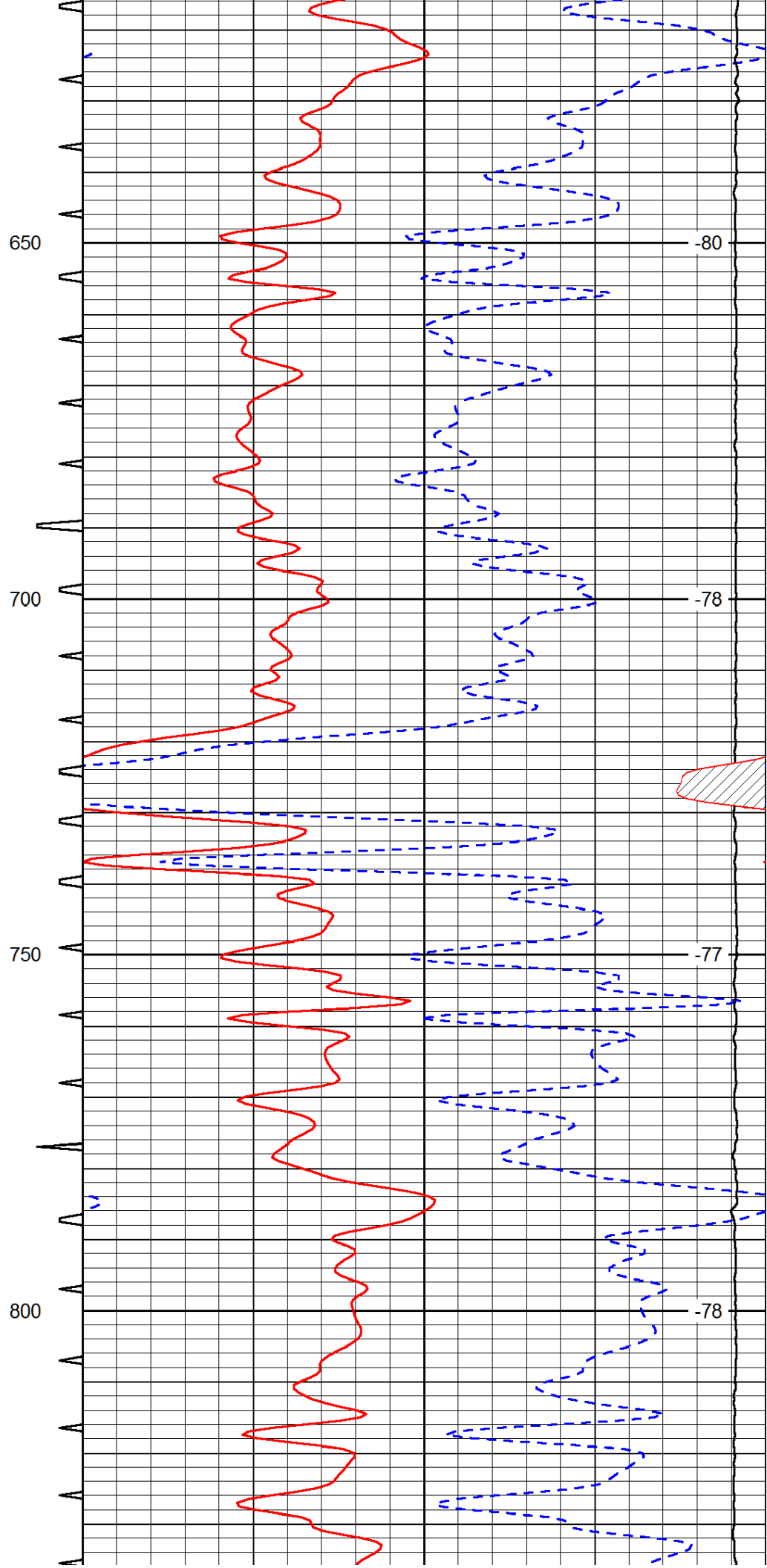
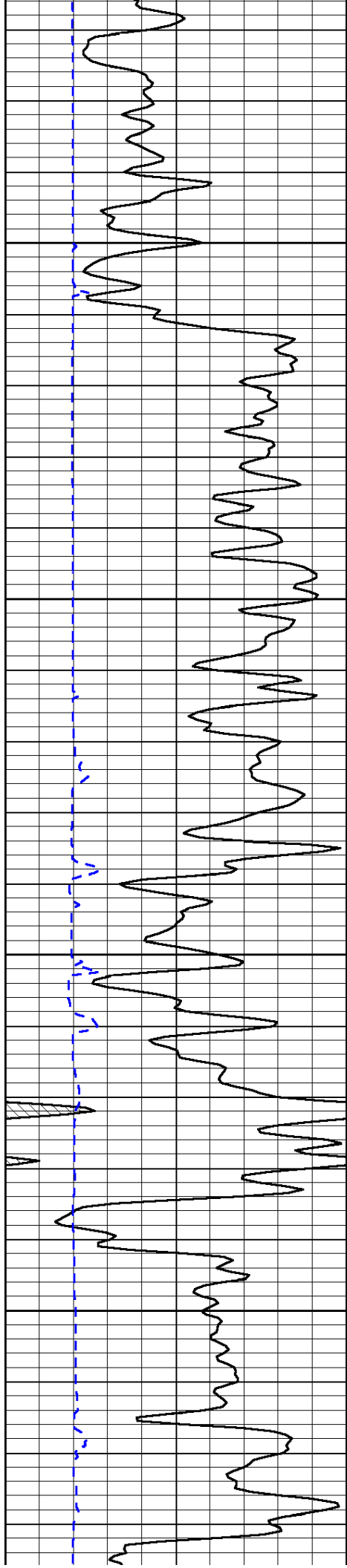
 Healy KS, 10 N, W Into

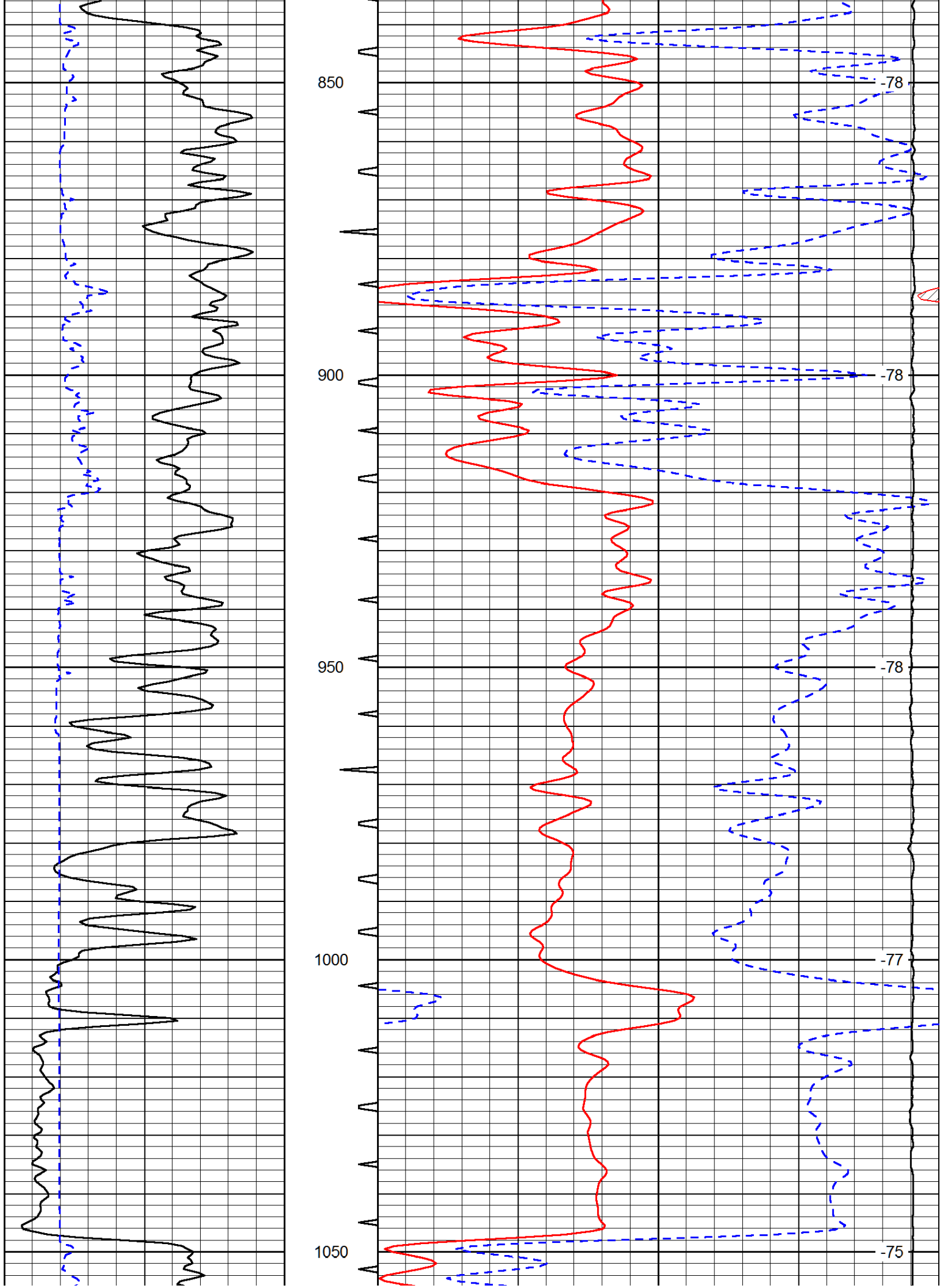
Database File: murfhd.db
 Dataset Pathname: dil/murfstk
 Presentation Format: sonic
 Dataset Creation: Mon Nov 17 10:31:56 2014
 Charted by: Depth in Feet scaled 1:240

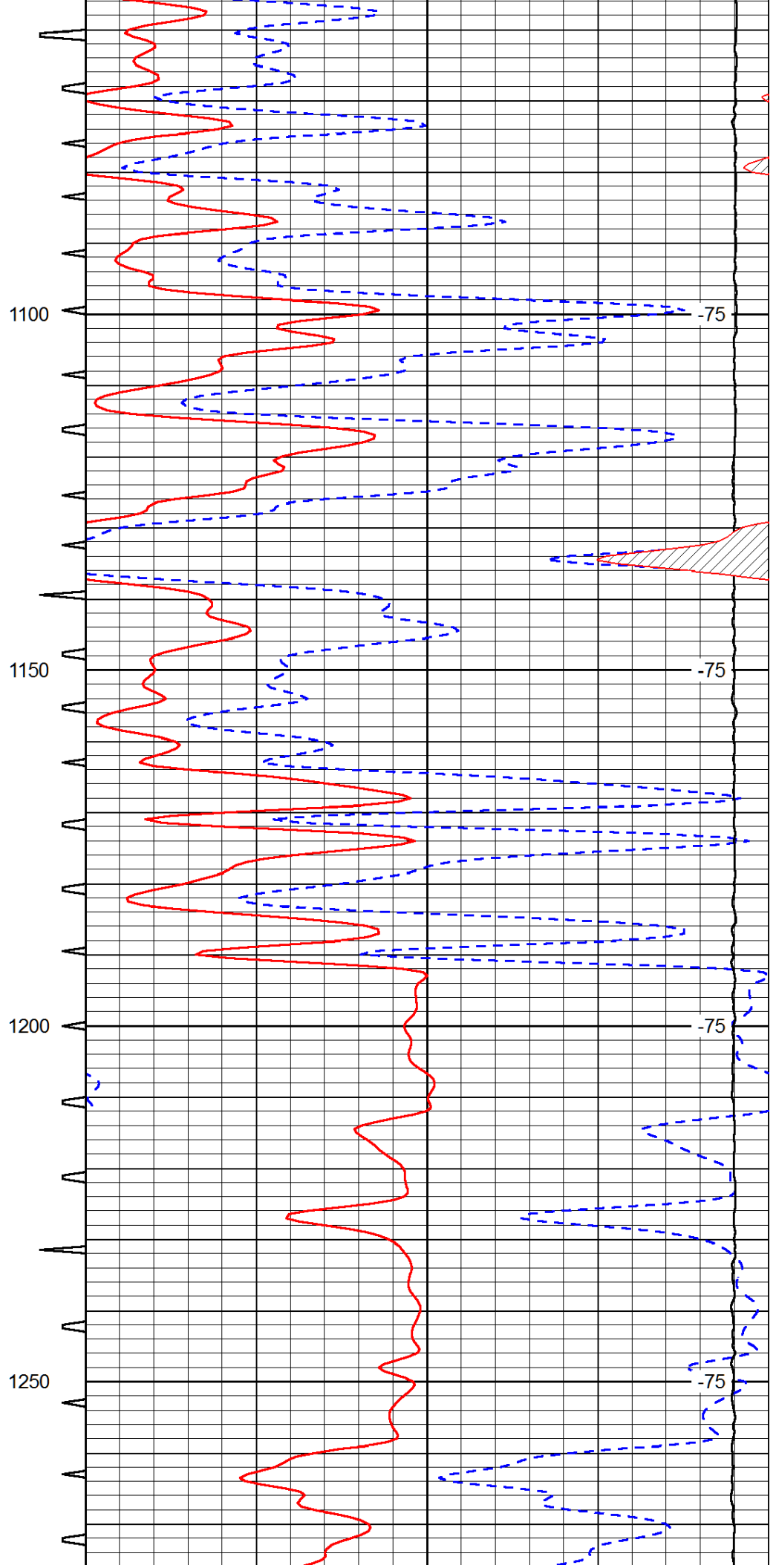
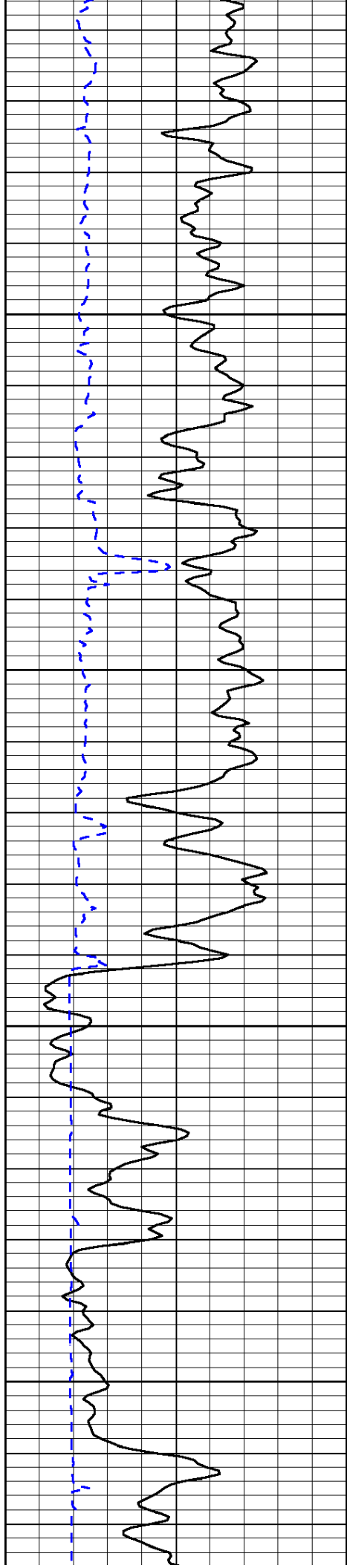
0	Gamma Ray	150	Sonic Int	140	Delta Time (usec/ft)	40
150	Gamma Ray	300	5	0	Sonic Porosity	-10
6	dCAL (GAPI)	16		15000	LTEN (lb)	0
						LSPD

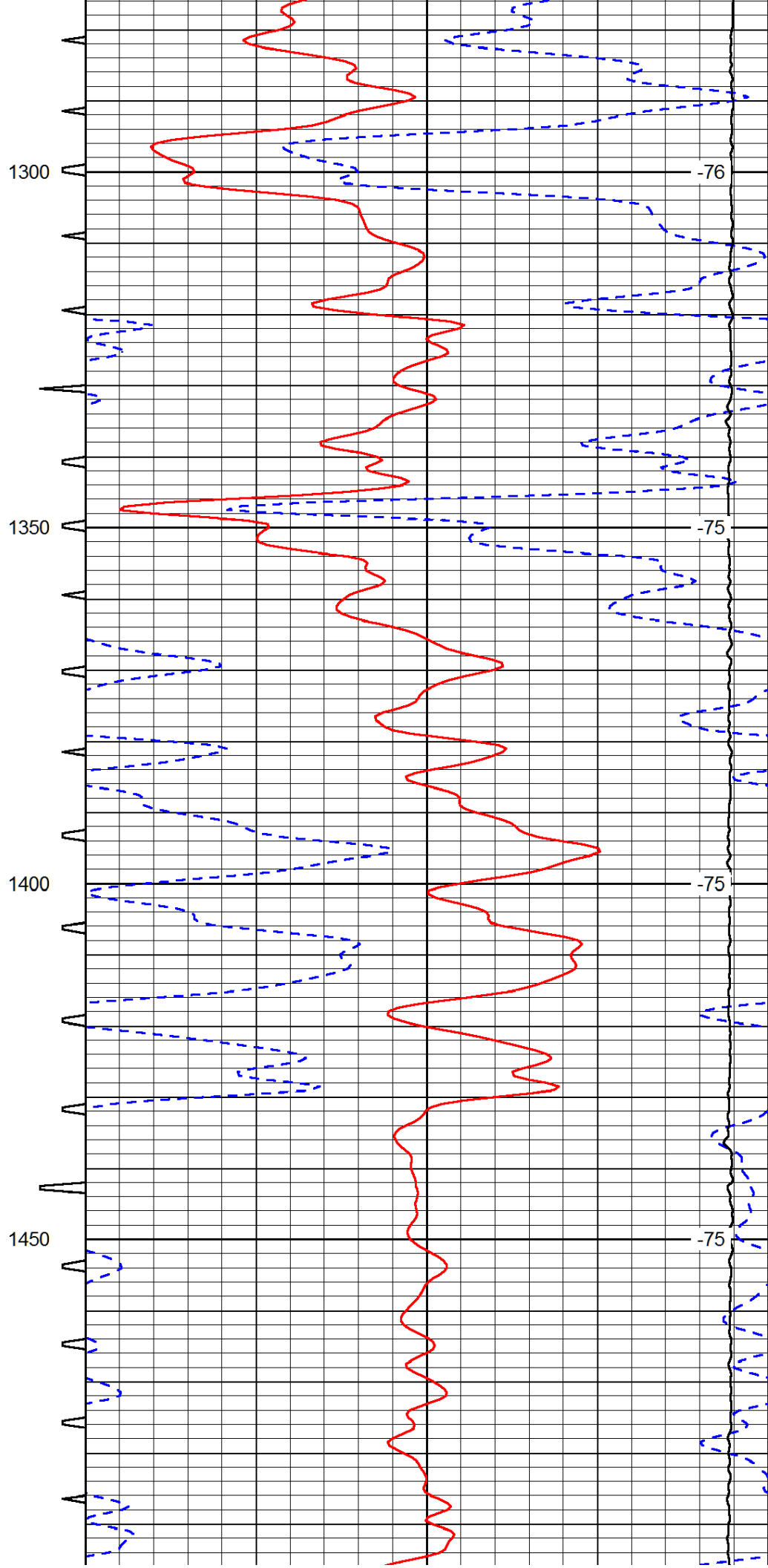
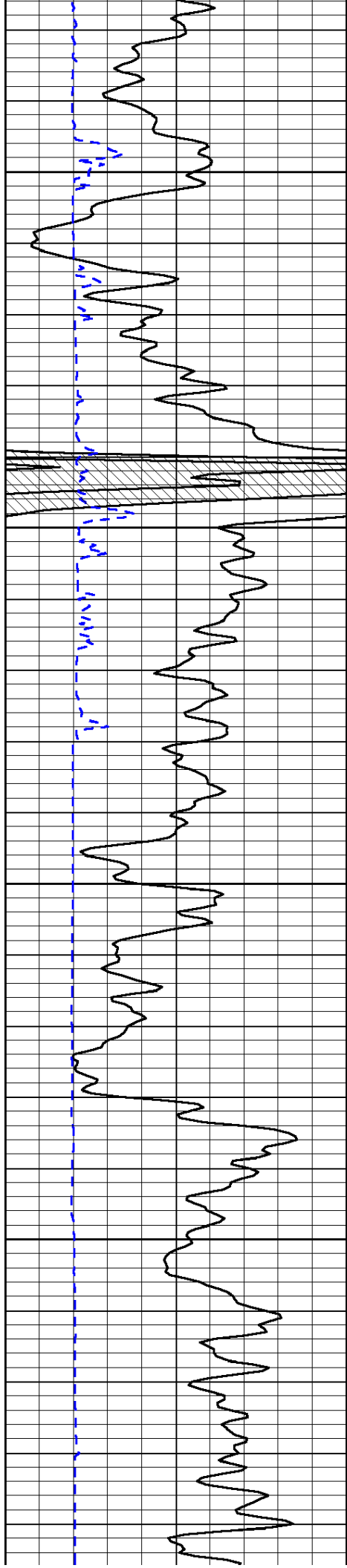


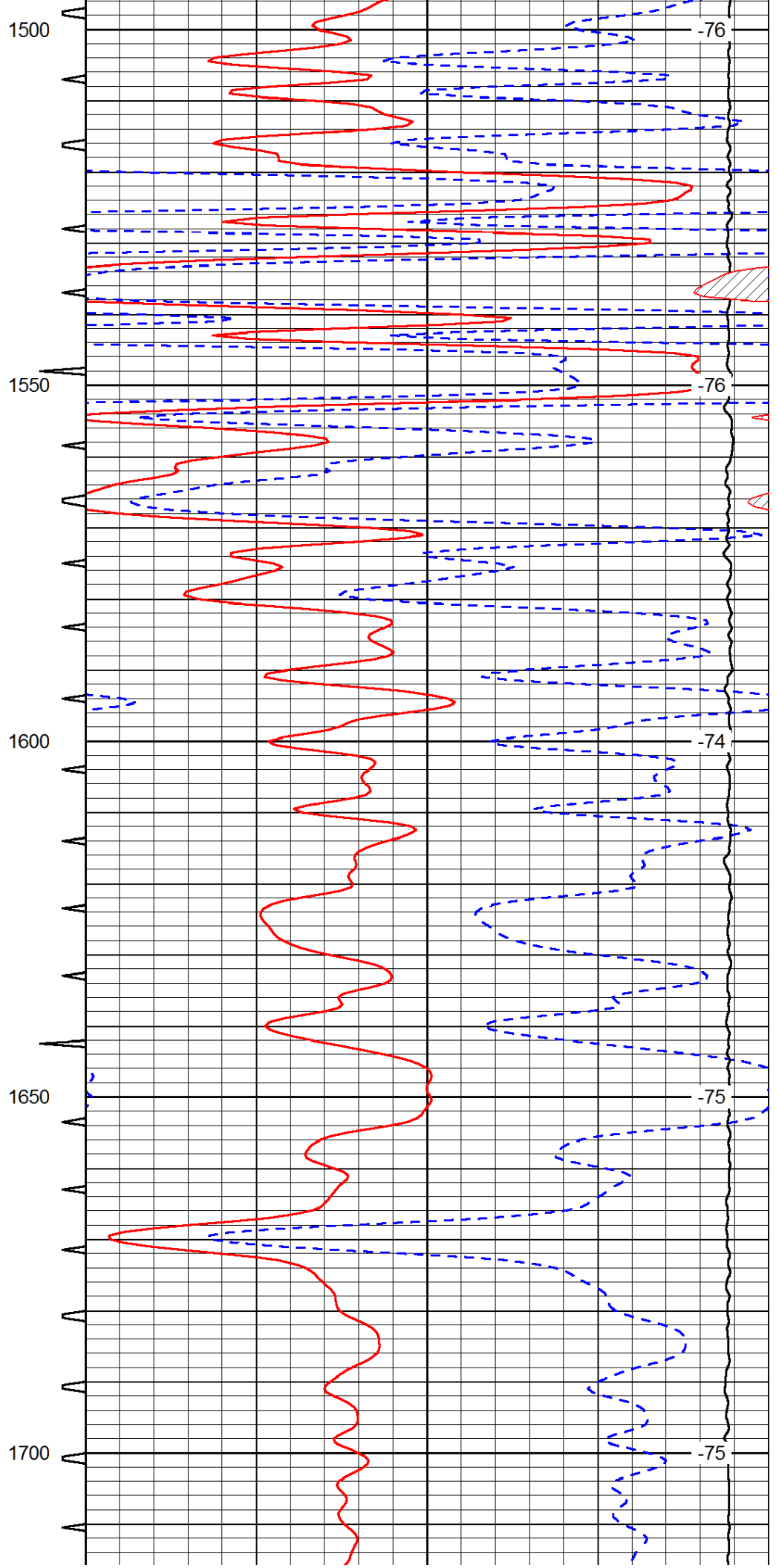
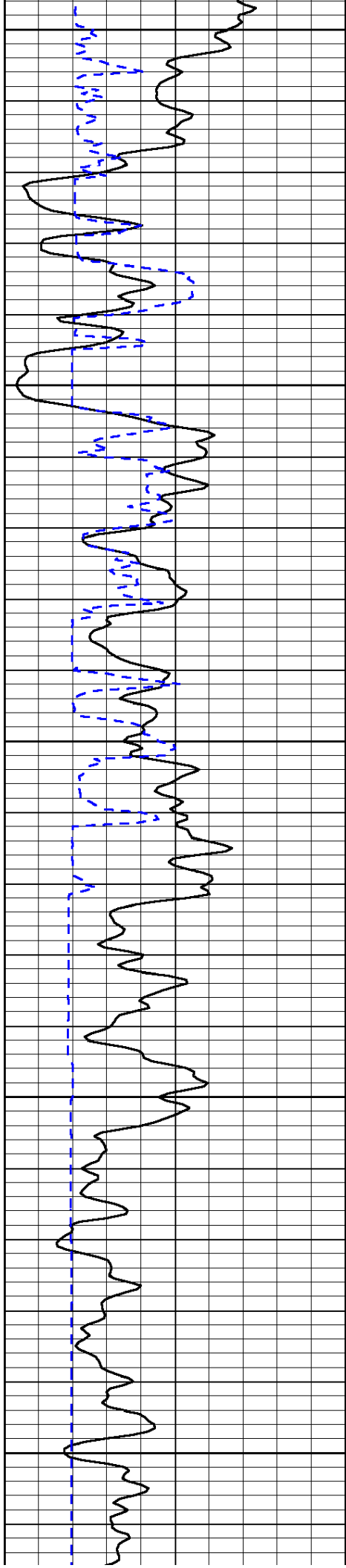


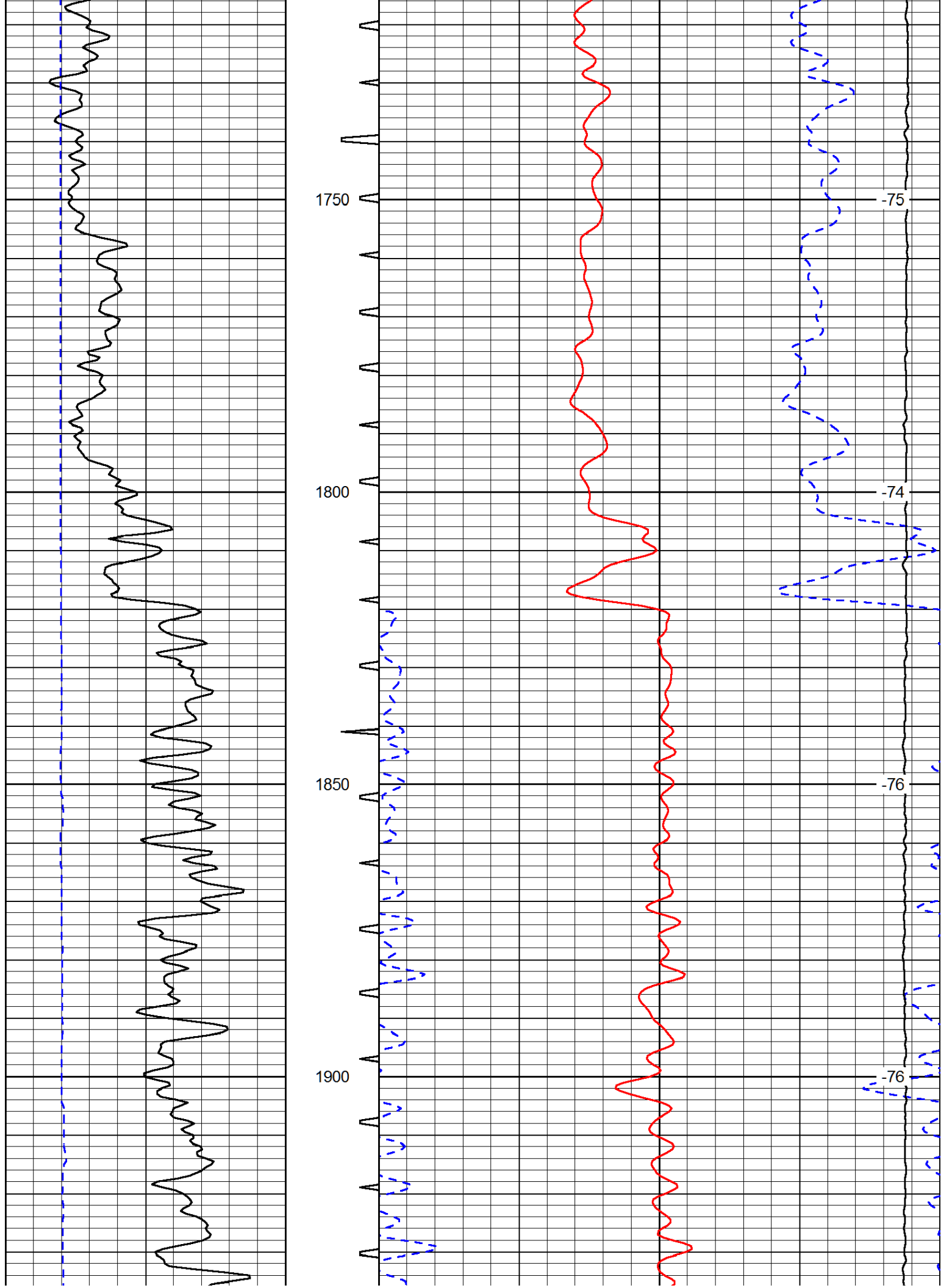


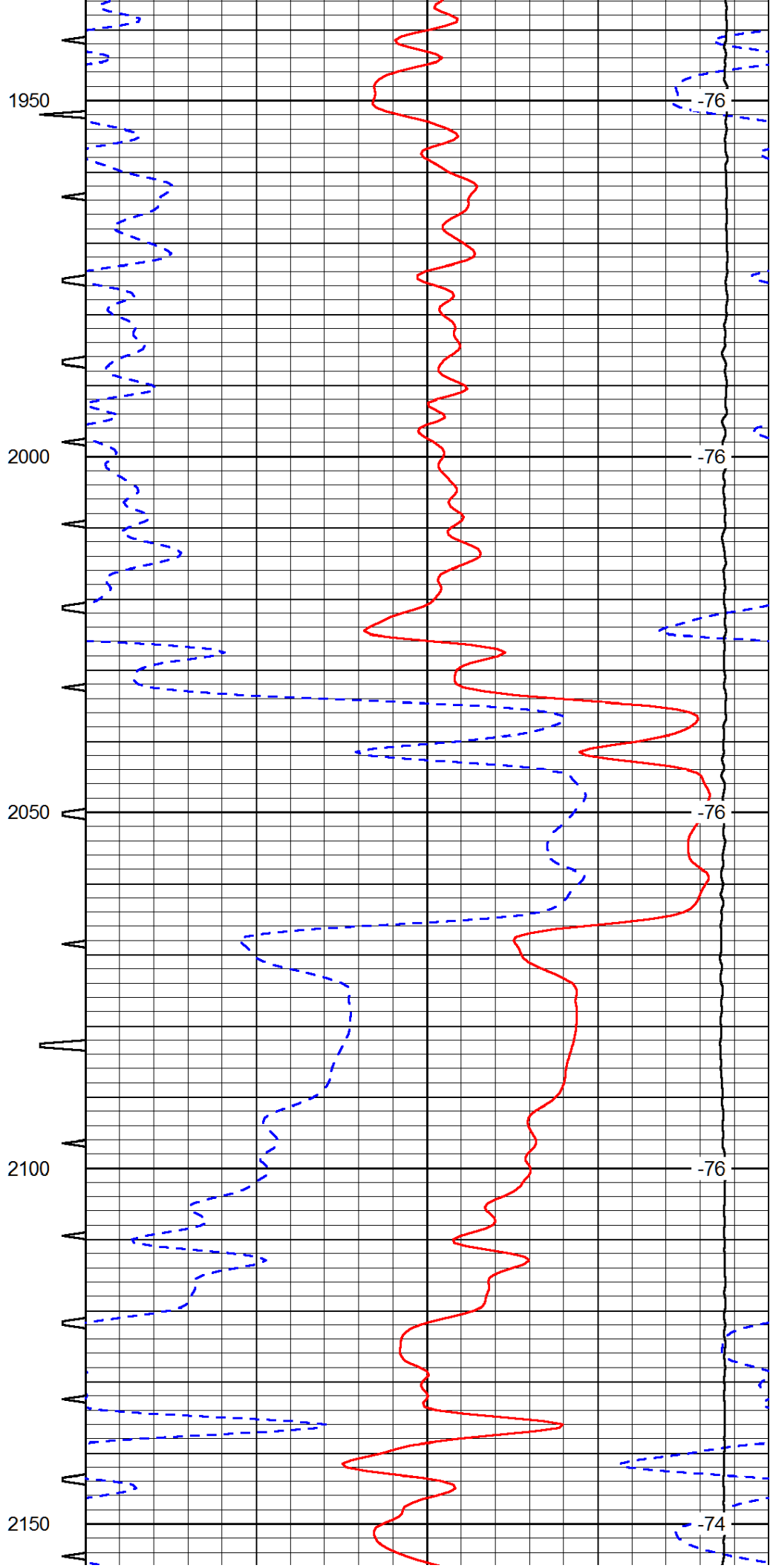
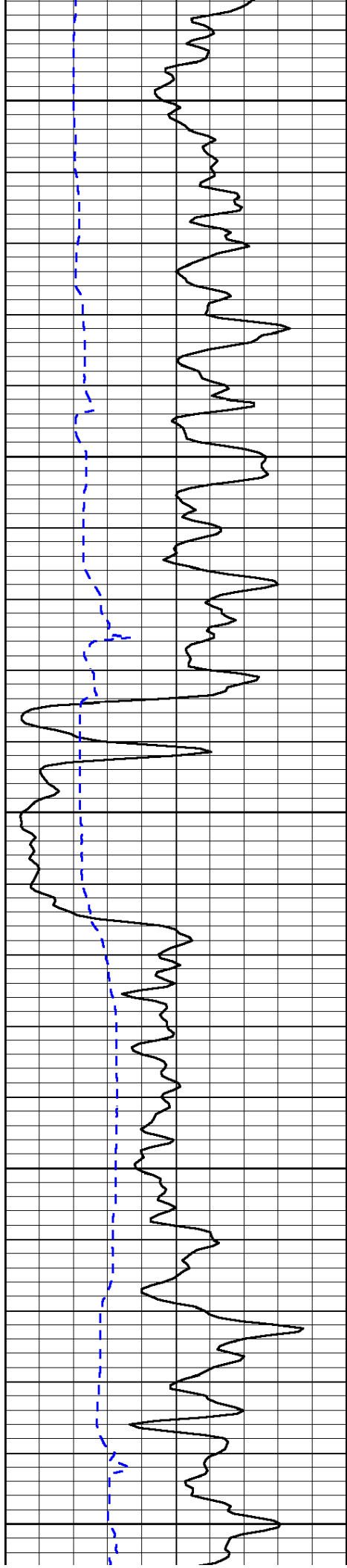


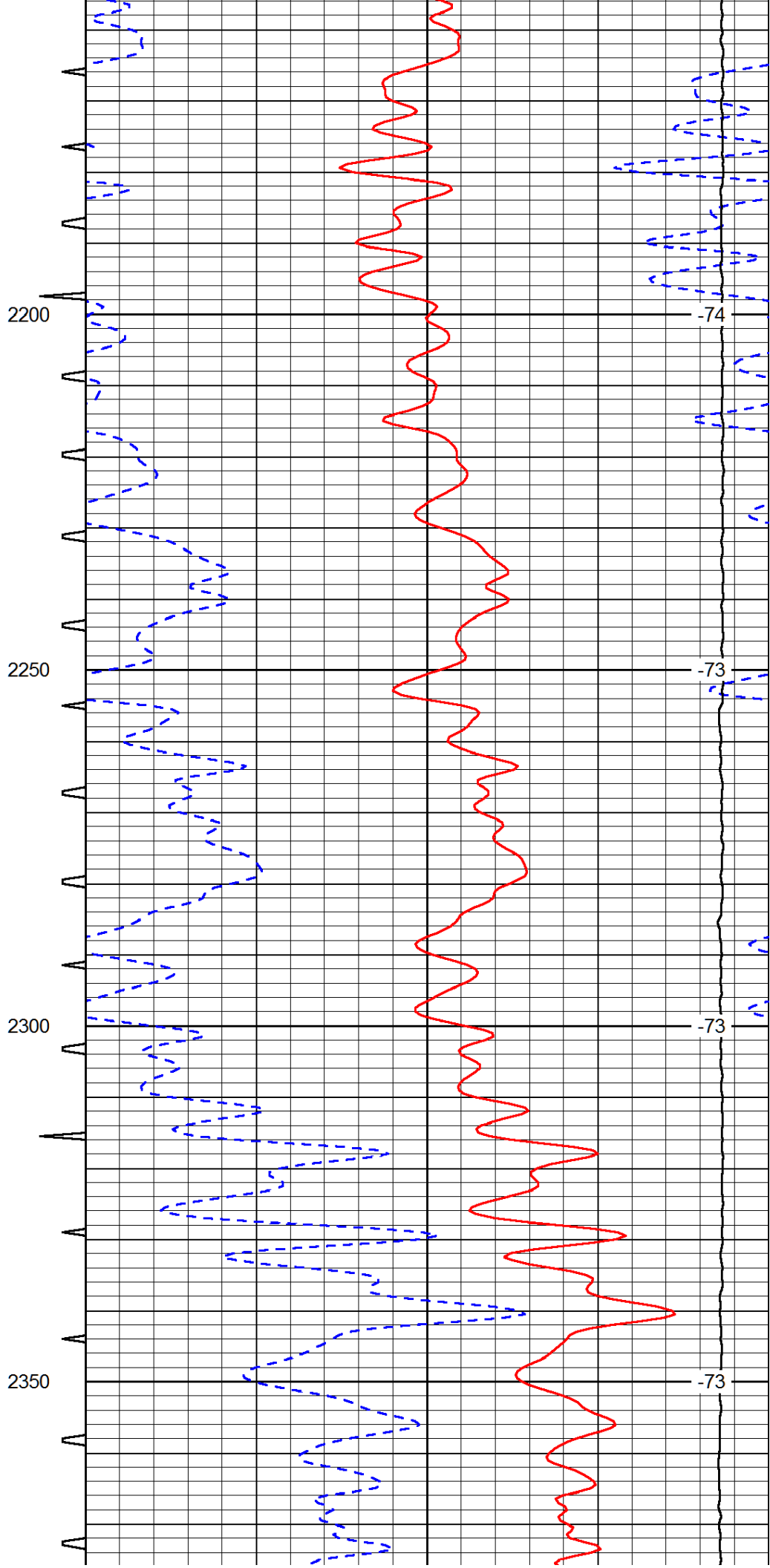
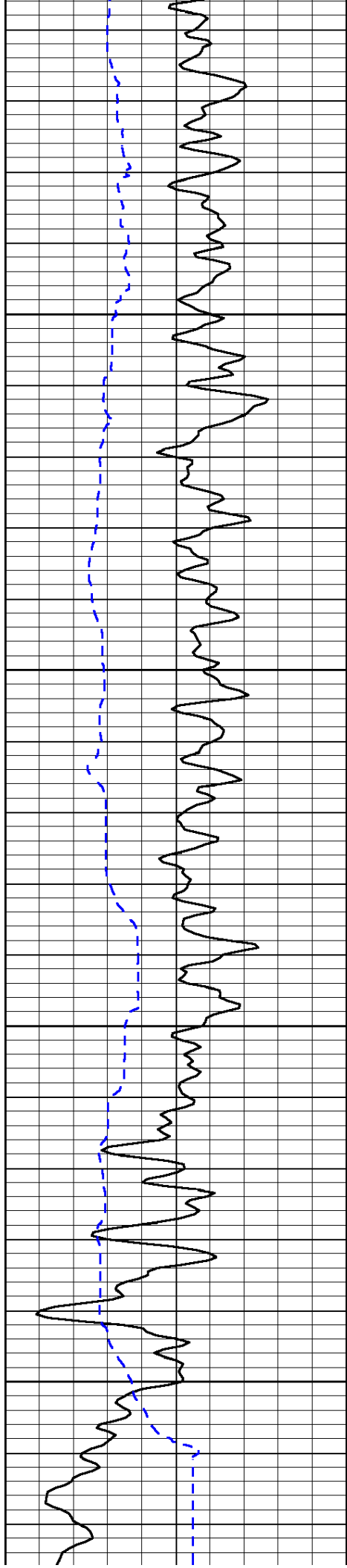


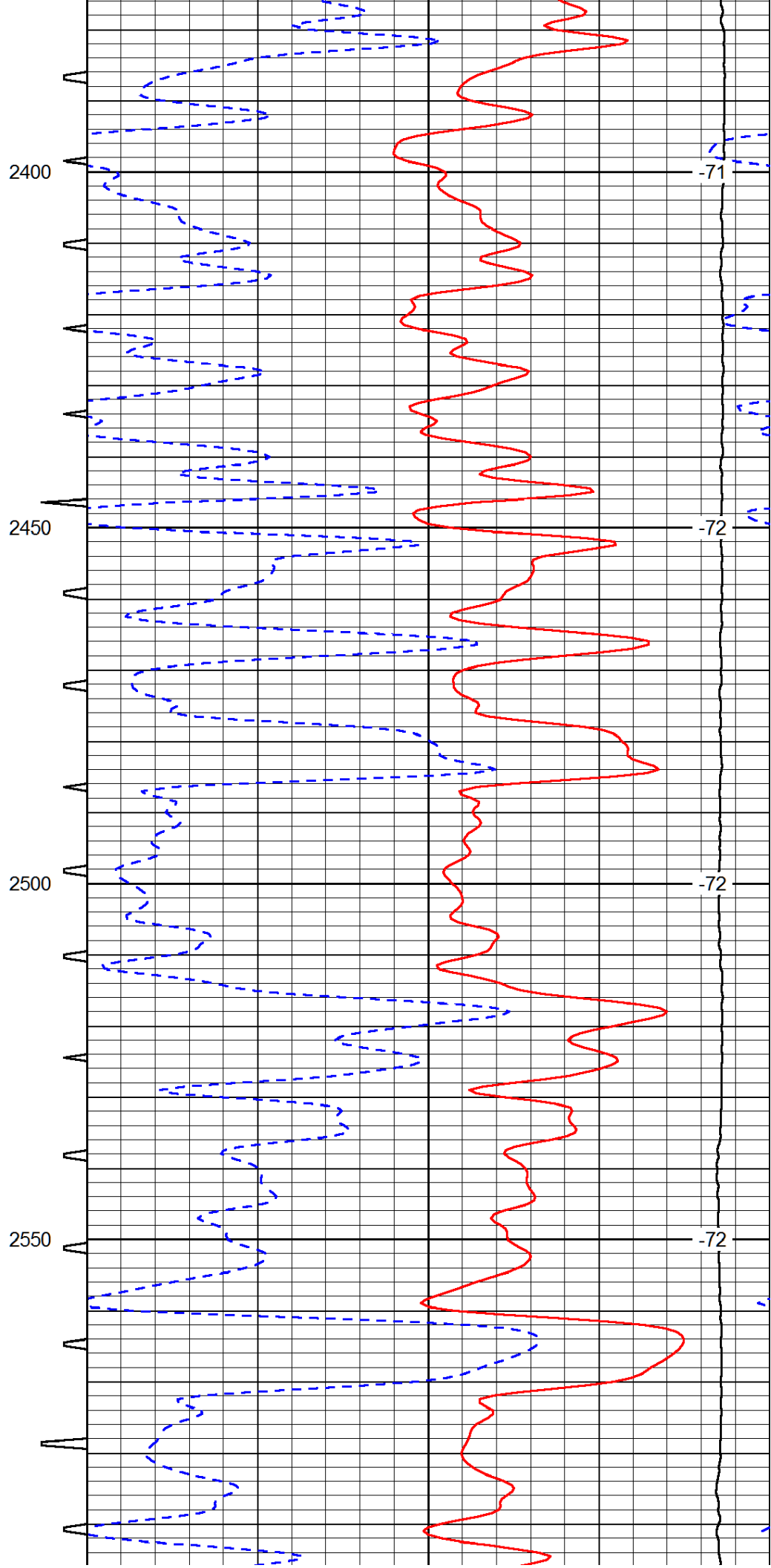
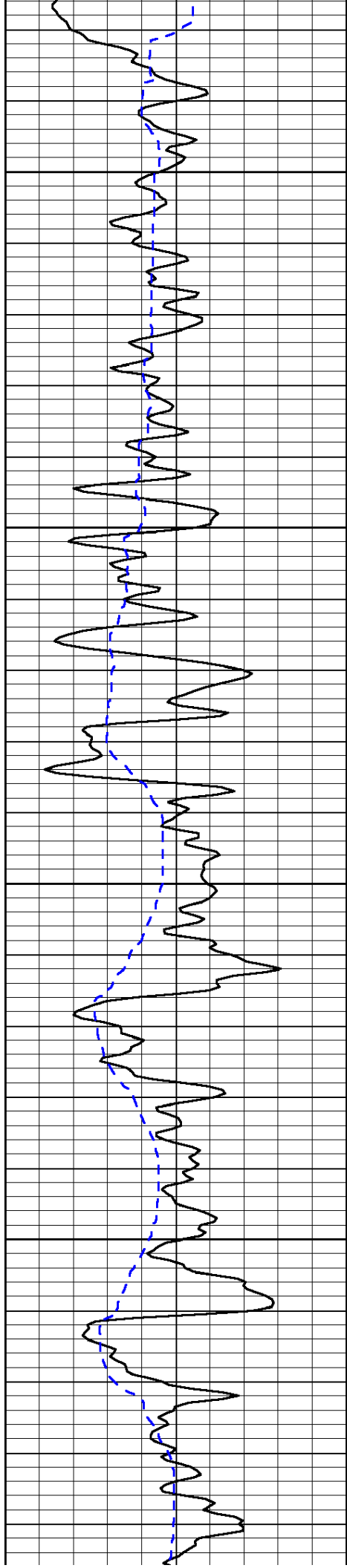


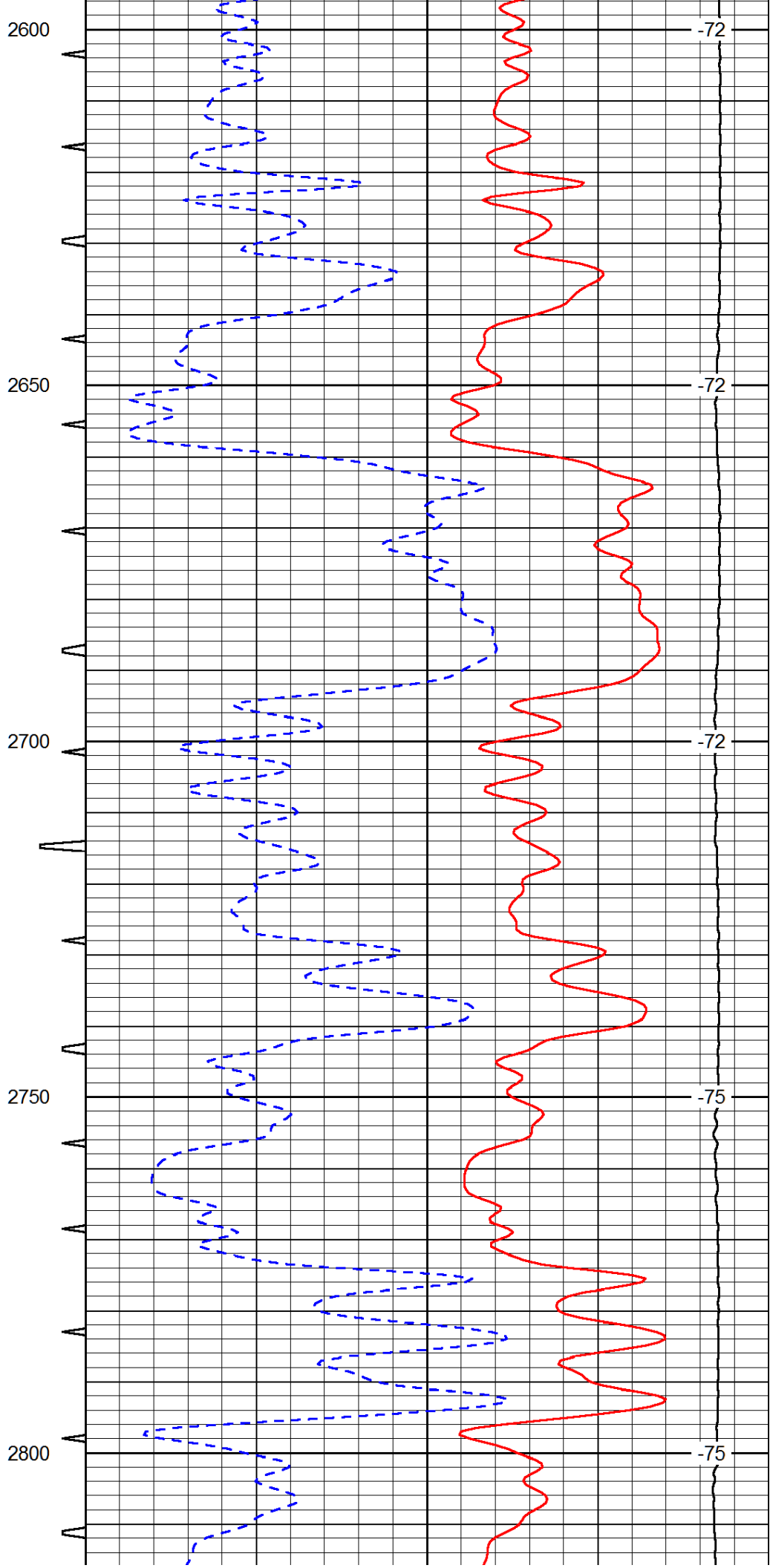
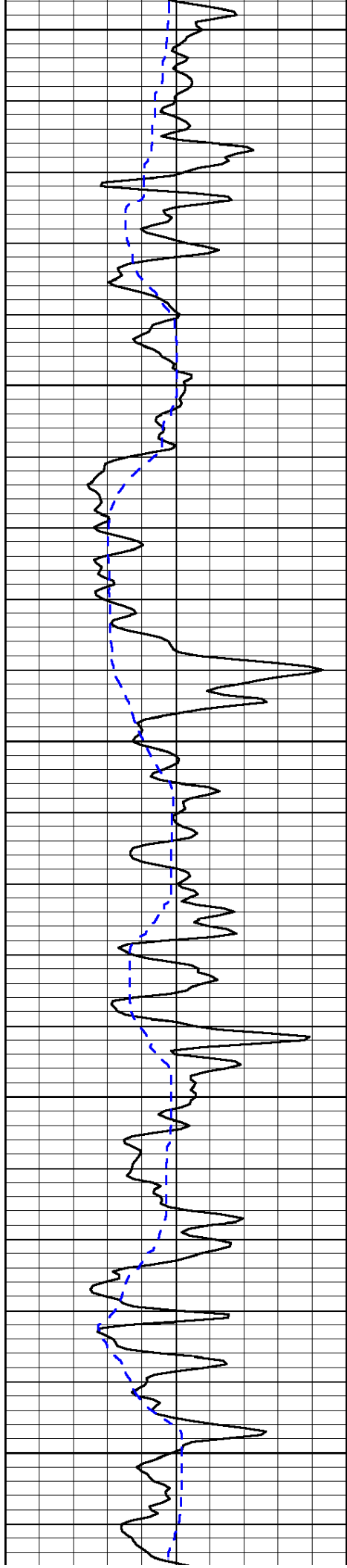


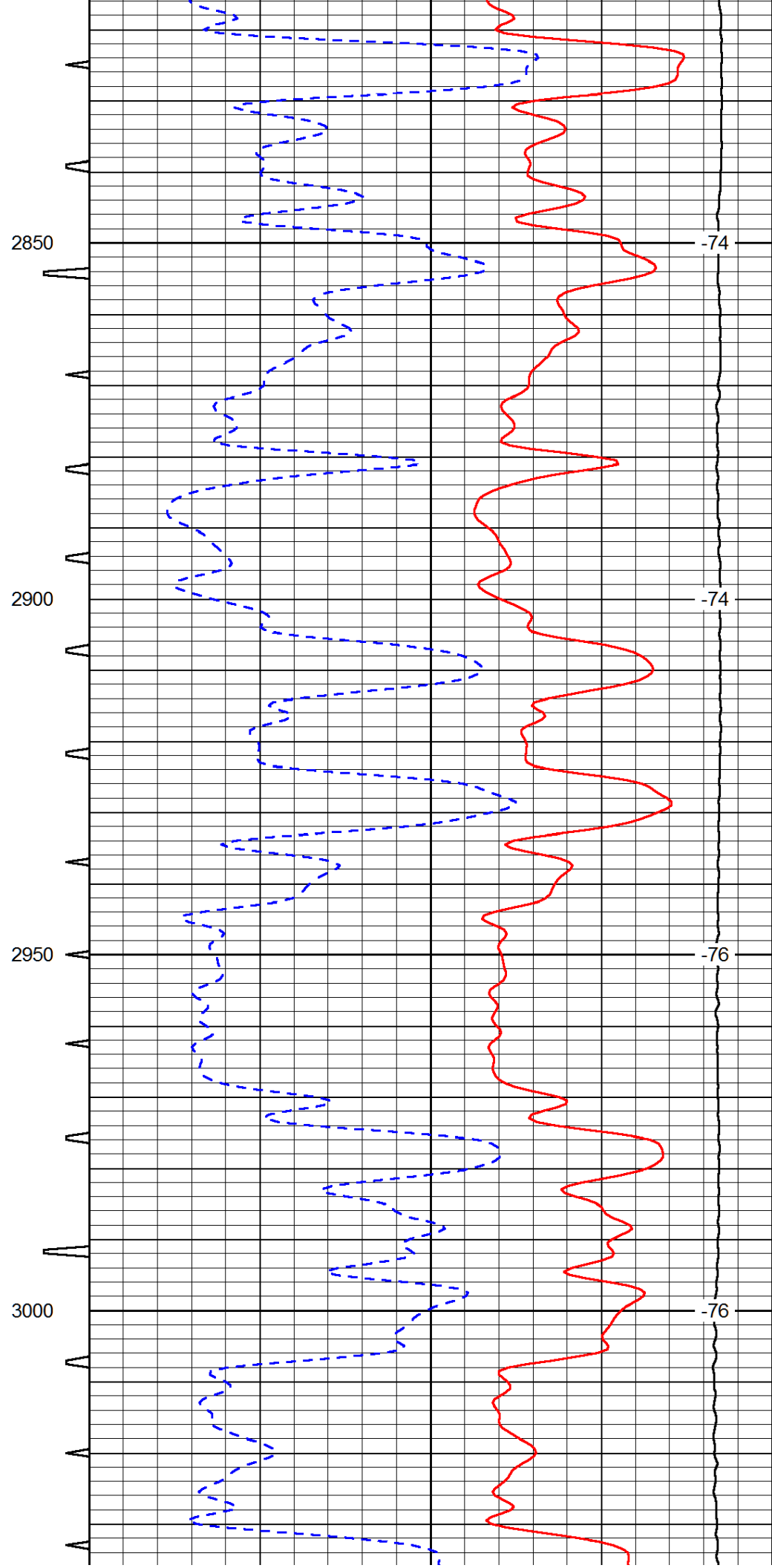
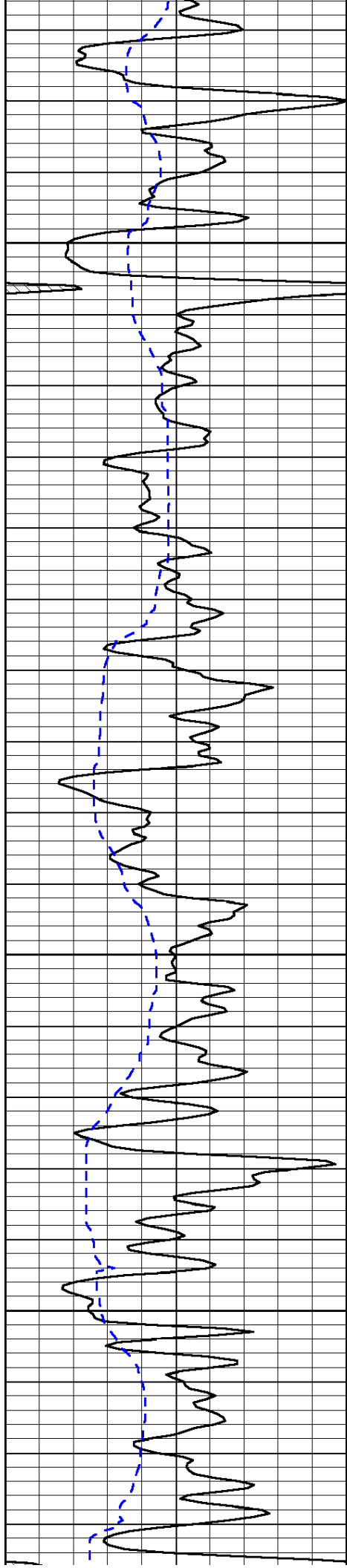


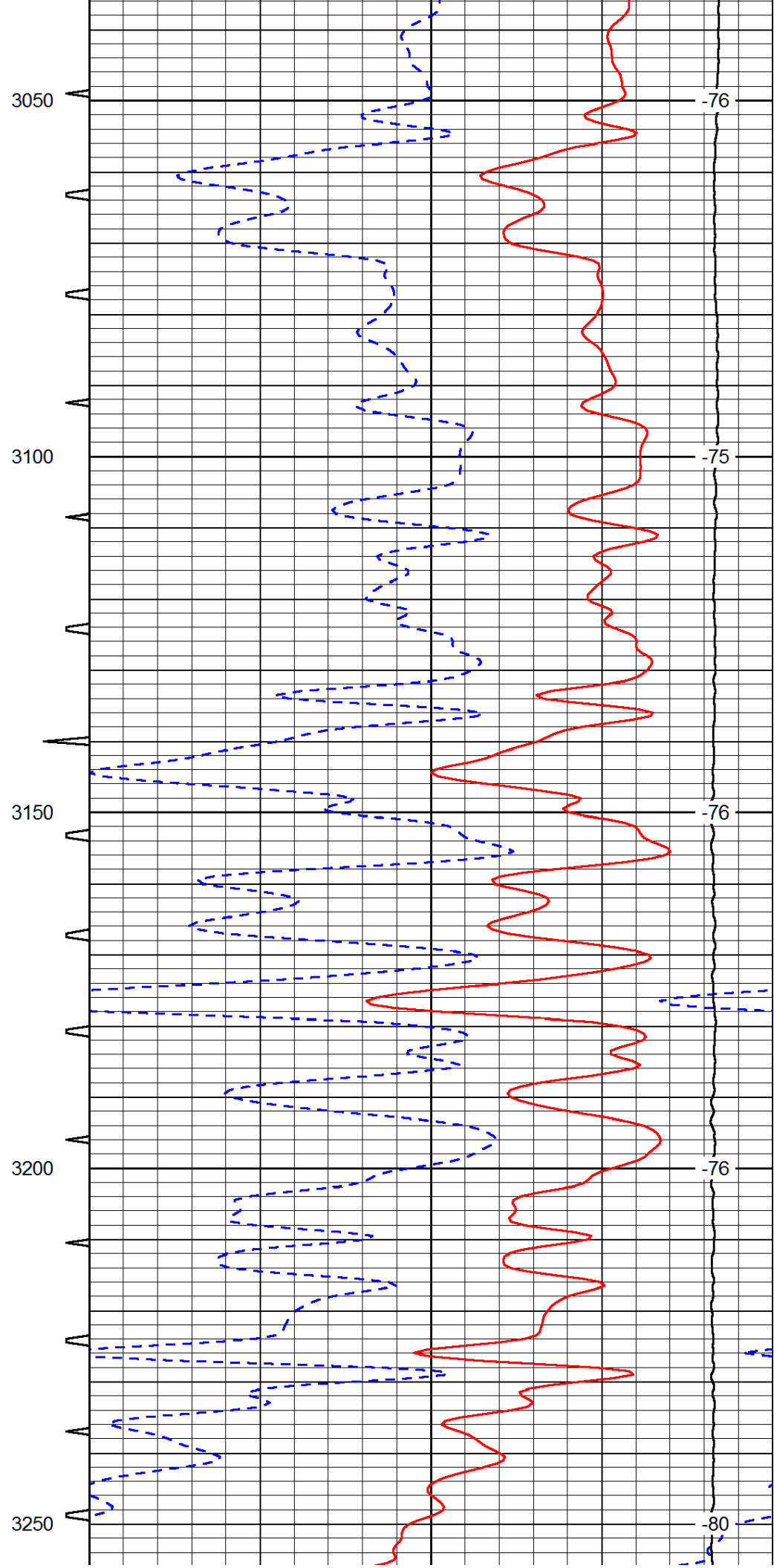
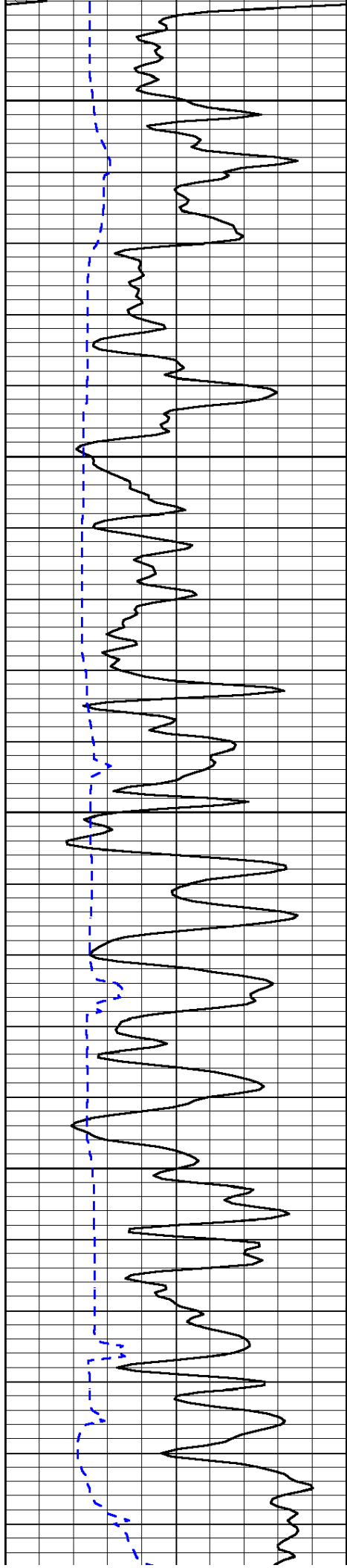


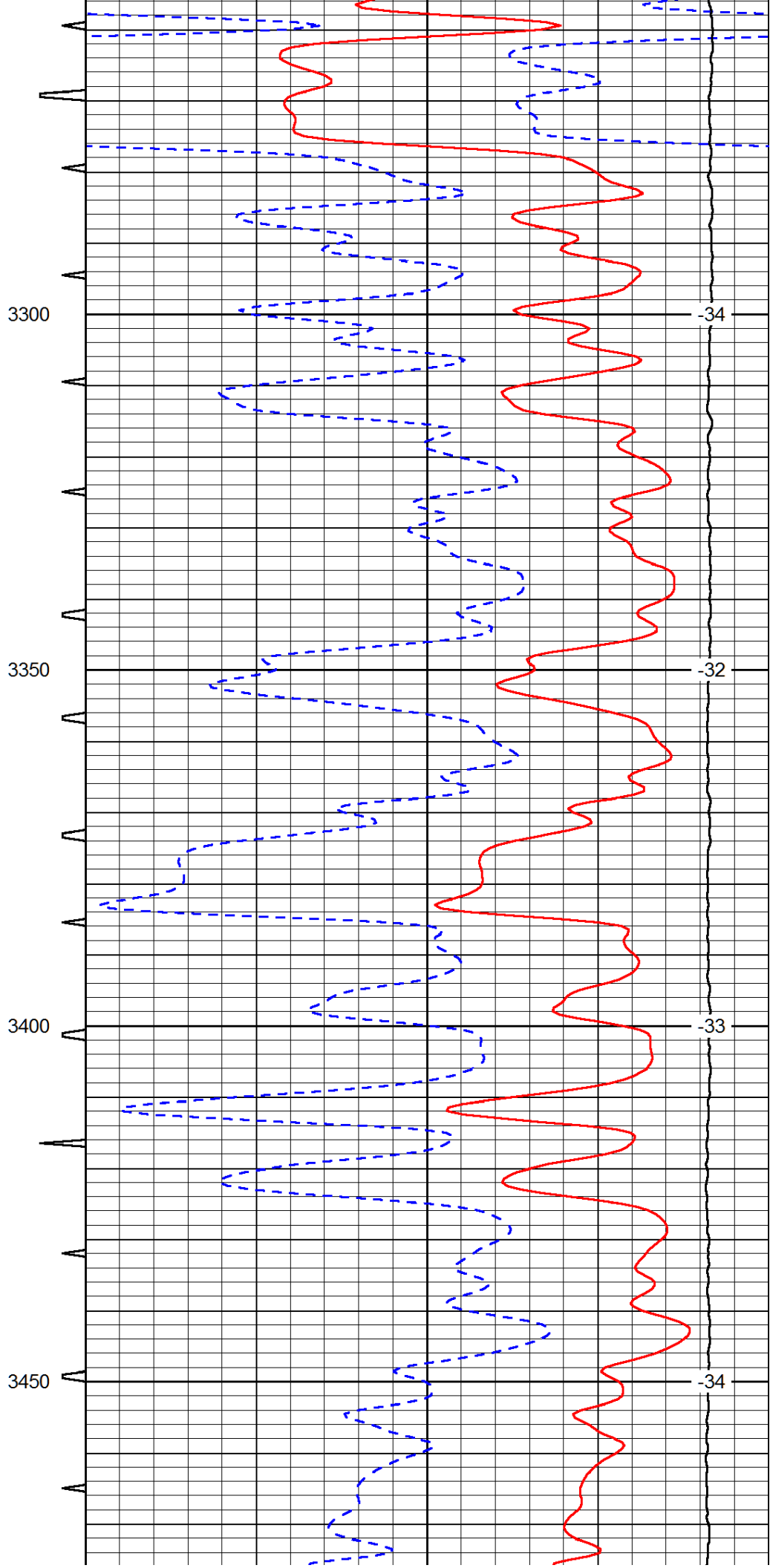
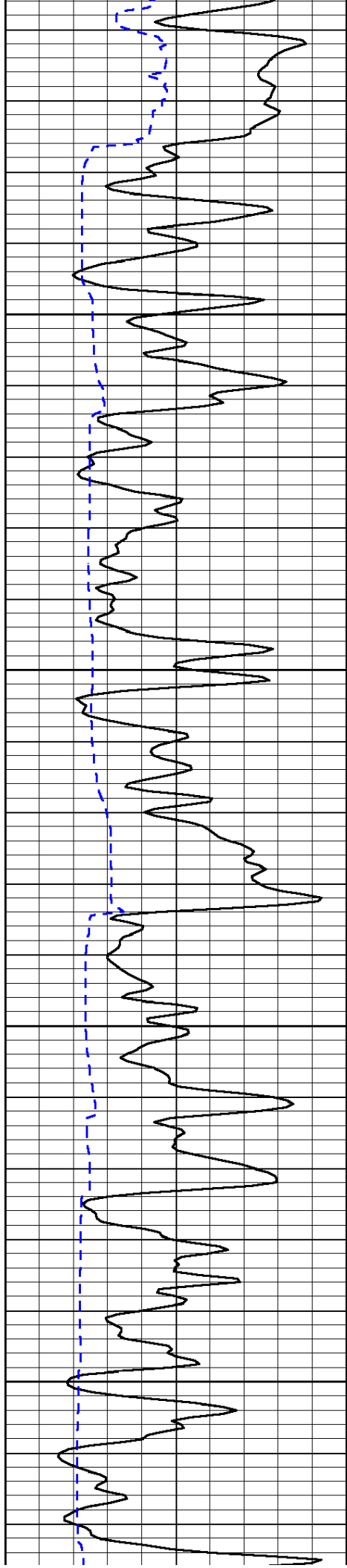


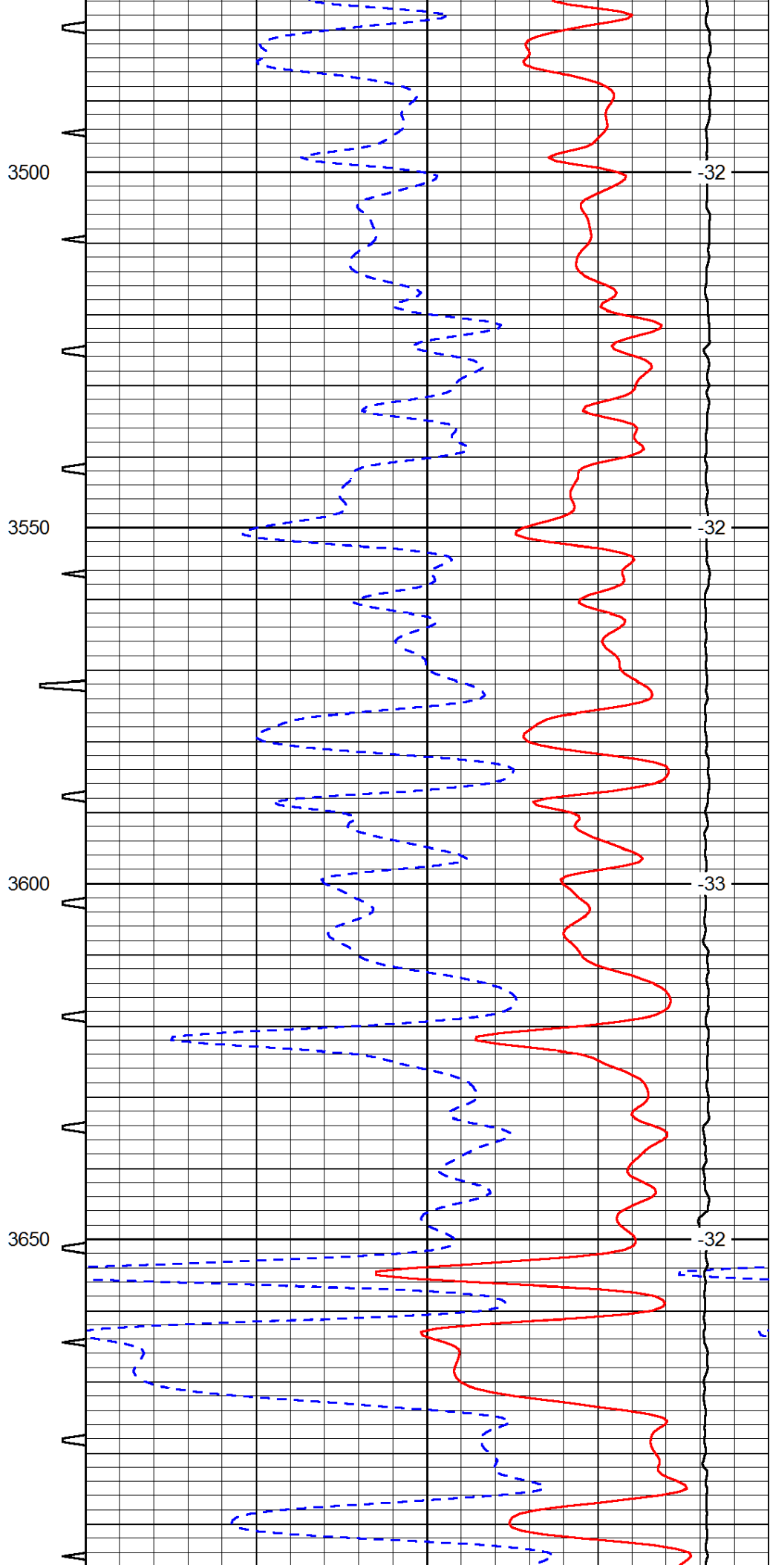
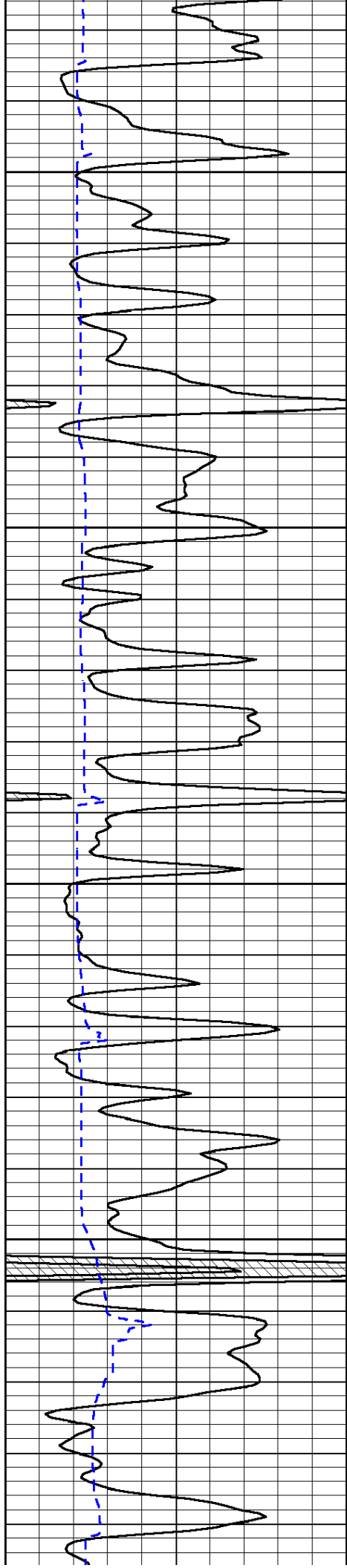


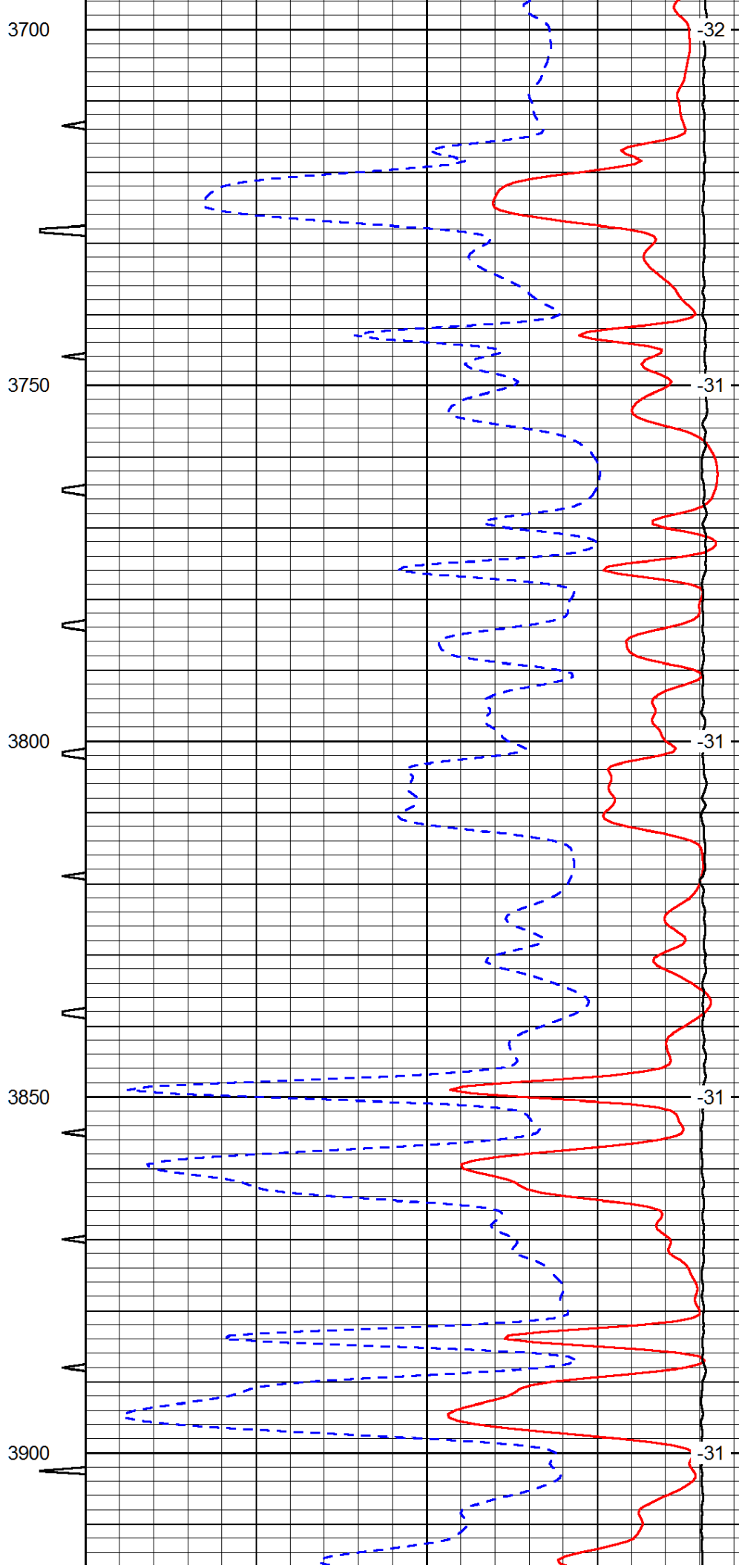
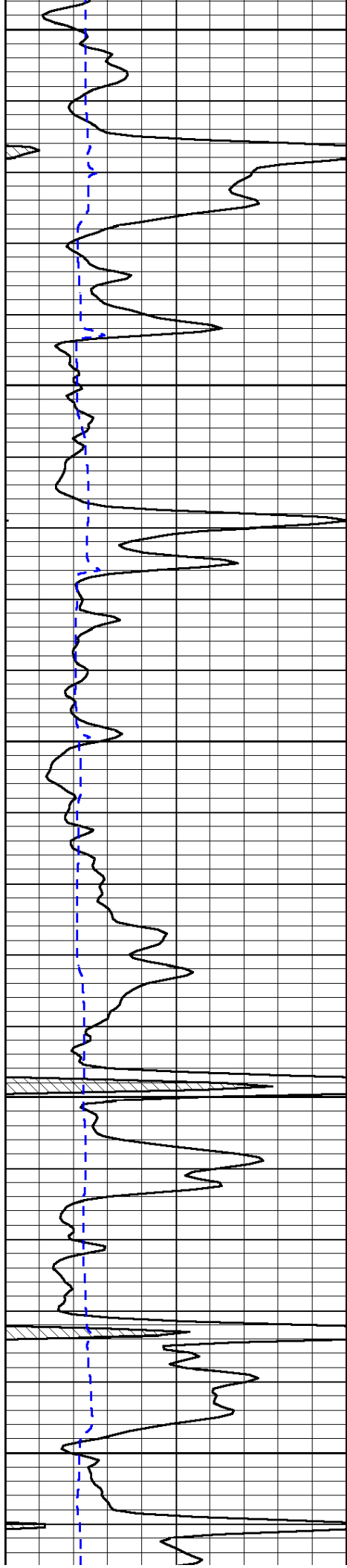


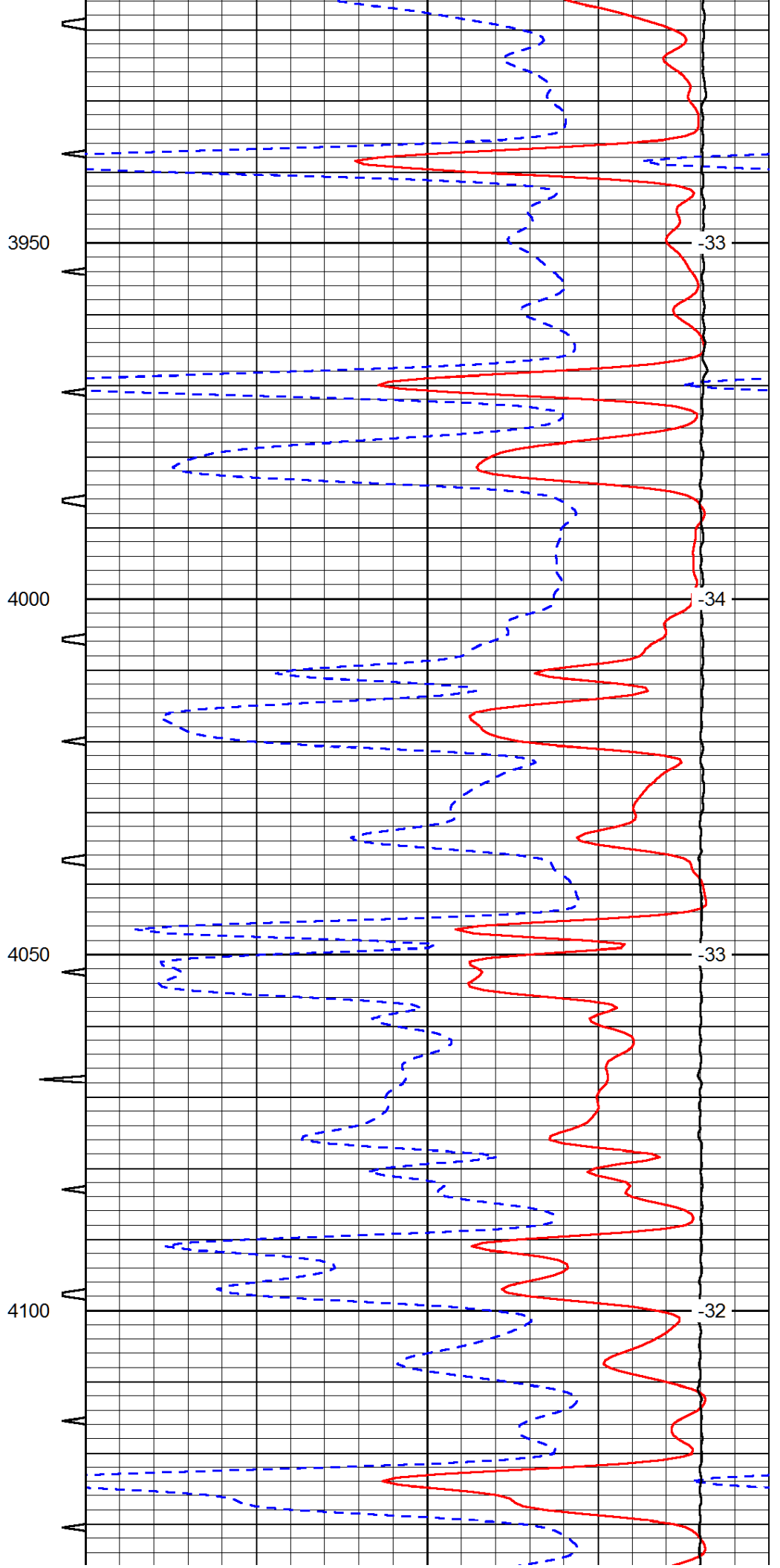
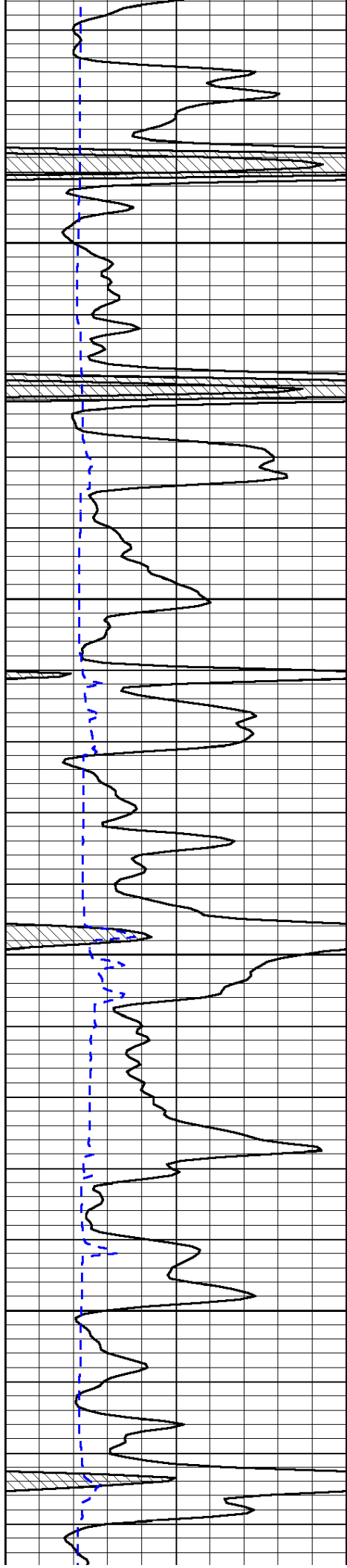


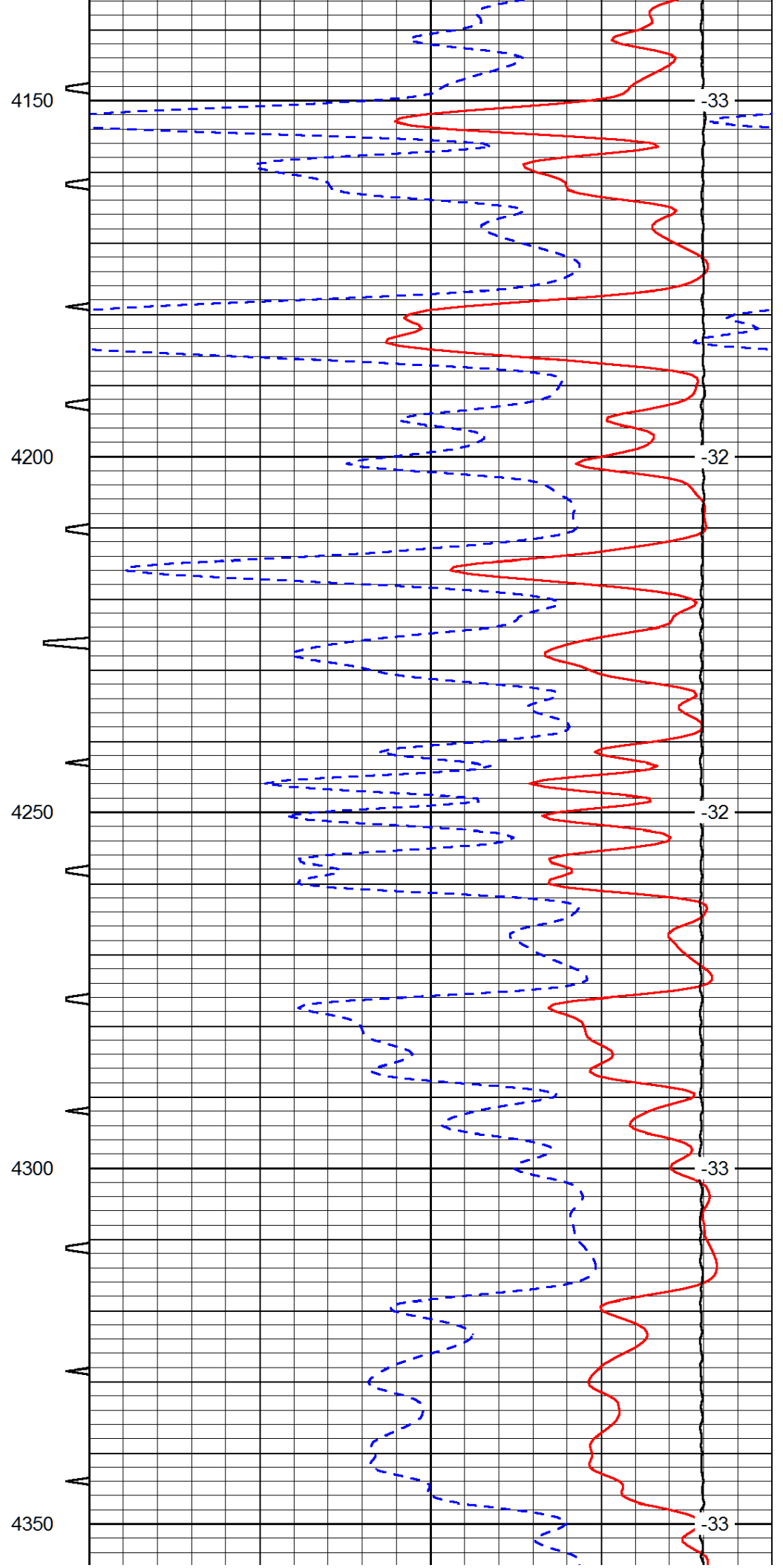
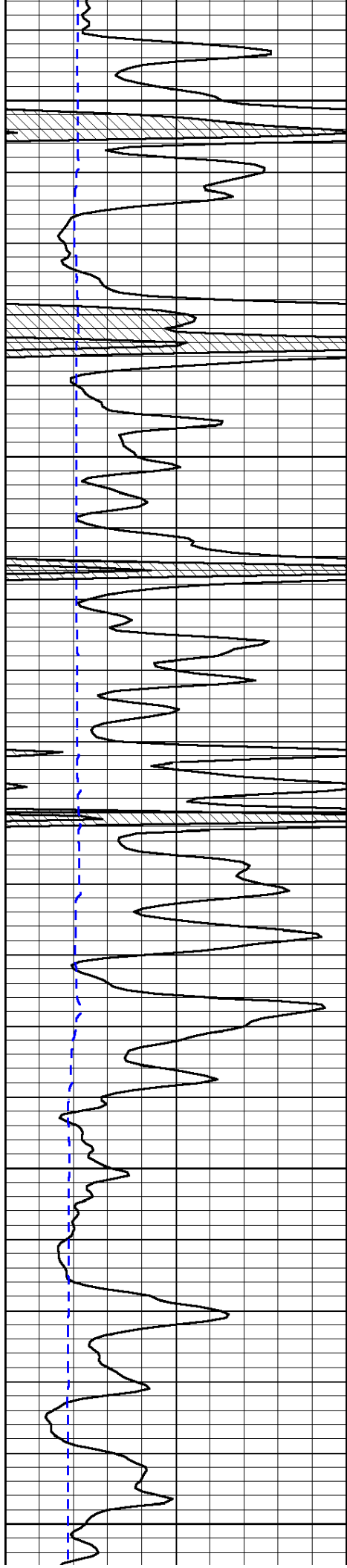


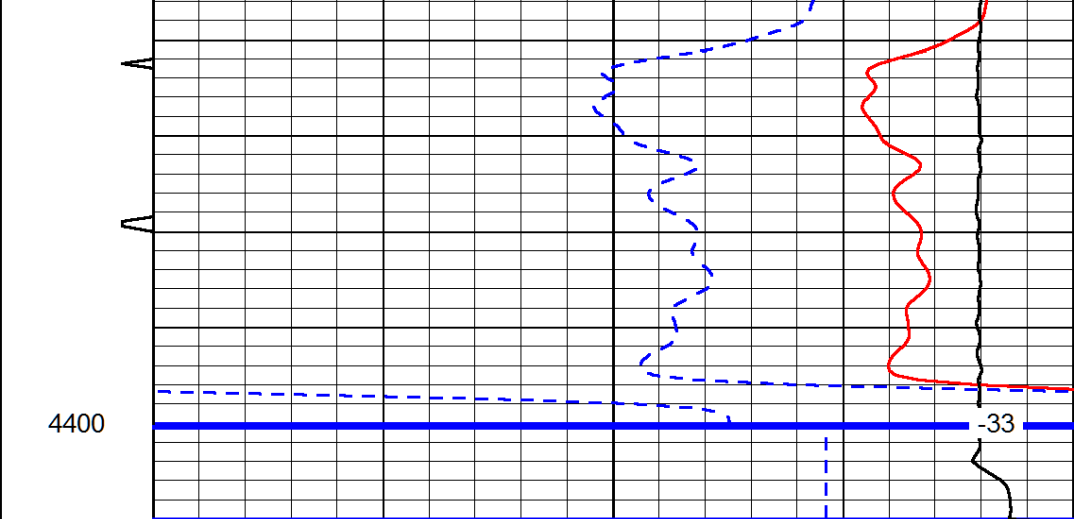
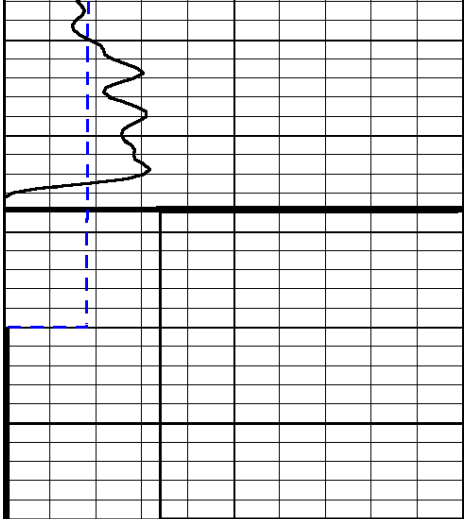












0	Gamma Ray	150	Sonic Int	140	Delta Time (usec/ft)	40
150	Gamma Ray	300	5	0	Sonic Porosity	-10
6	dCAL (GAPI)	16		15000	LTEN (lb)	0

LSPD