



Pioneer Energy Services

# Microresistivity Log

API No. 15-063-22,233-00-00

Company **Murfin Drilling Company, Inc.**  
 Well **Roemer-Bell No.2-1**  
 Field **Wildcat**  
 County **Gove** State **Kansas**

Location **900' FSL & 335' FEL**

Permanent Datum **Ground Level** Elevation **2618**  
 Log Measured From **Kelly Bushing** 11 Ft. Above Perm. Datum  
 Drilling Measured From **Kelly Bushing**

Other Services  
 CNL/CDL  
 DIL/BHCS  
 Elevation  
 K.B. 2629  
 D.F. 2618  
 G.L. 2618

Date	11/17/2014
Run Number	Two
Depth Driller	4406
Depth Logger	4405
Bottom Logged Interval	4404
Top Log Interval	3300
Casing Driller	8.625 @ 221
Casing Logger	217
Bit Size	7.875
Type Fluid in Hole	Chemical
Salinity, ppm CL	2.600
Density / Viscosity	9.3 53
pH / Fluid Loss	10.5 6.8
Source of Sample	Flowline
Rm @ Meas. Temp	.75 @ 50
Rmf @ Meas. Temp	.56 @ 50
Rmc @ Meas. Temp	1.01 @ 50
Source of Rmf / Rmc	Charts
Rm @ BHT	.31 @ 120
Operating Rig Time	5 Hours
Max Rec. Temp. F	120
Equipment Number	51
Location	Hays
Recorded By	C. Desaire
Witnessed By	Larry Nicholson

<<< Fold Here >>>

All interpretations are opinions based on inferences from electrical or other measurements and we cannot and do not guarantee the accuracy or correctness of any interpretation, and we shall not, except in the case of gross or willful negligence on our part, be liable or responsible for any loss, costs, damages, or expenses incurred or sustained by anyone resulting from any interpretation made by any of our officers, agents or employees. These interpretations are also subject to our general terms and conditions set out in our current Price Schedule.

Comments

Thank you for using Log-Tech, Inc.  
 (785) 625-3858

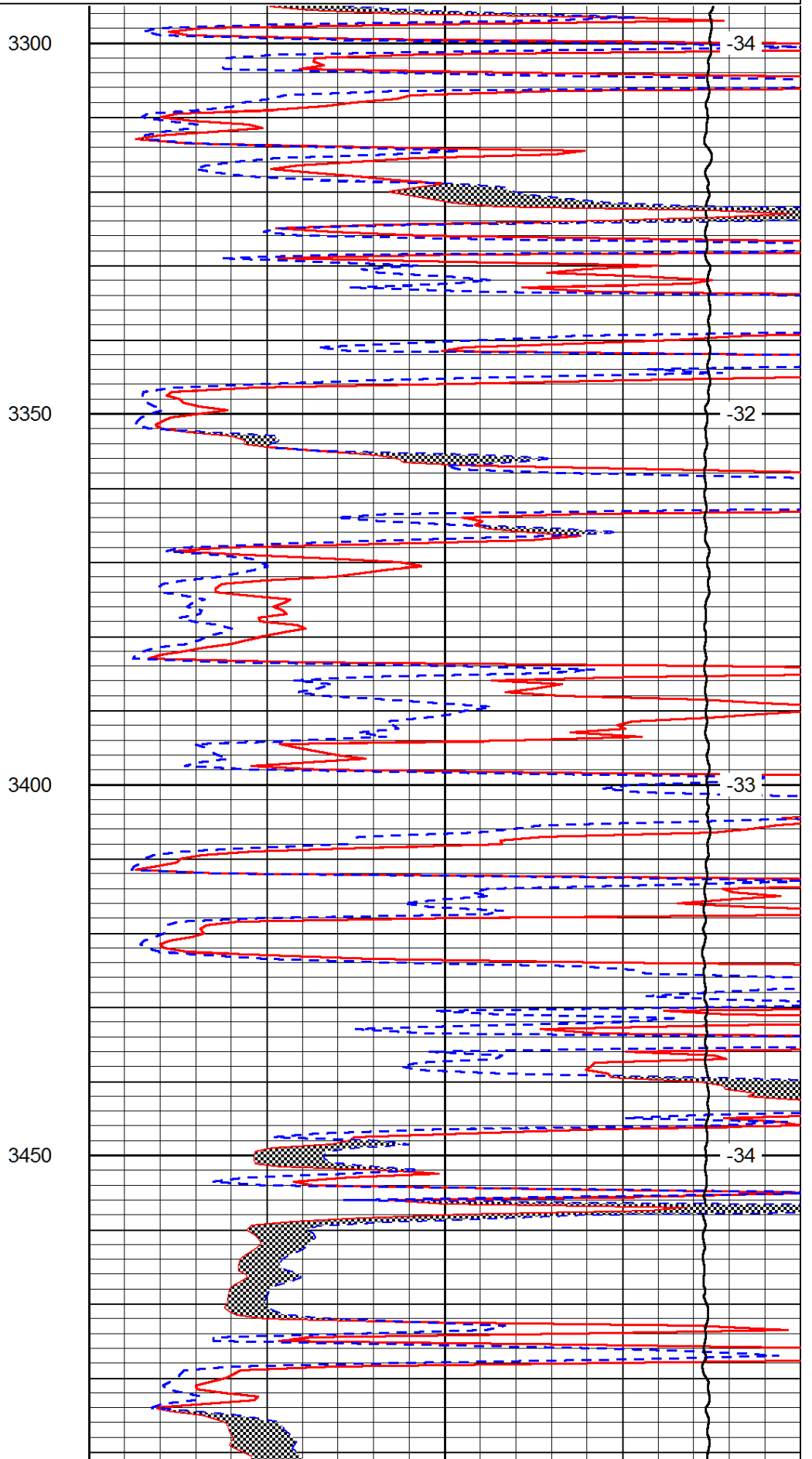
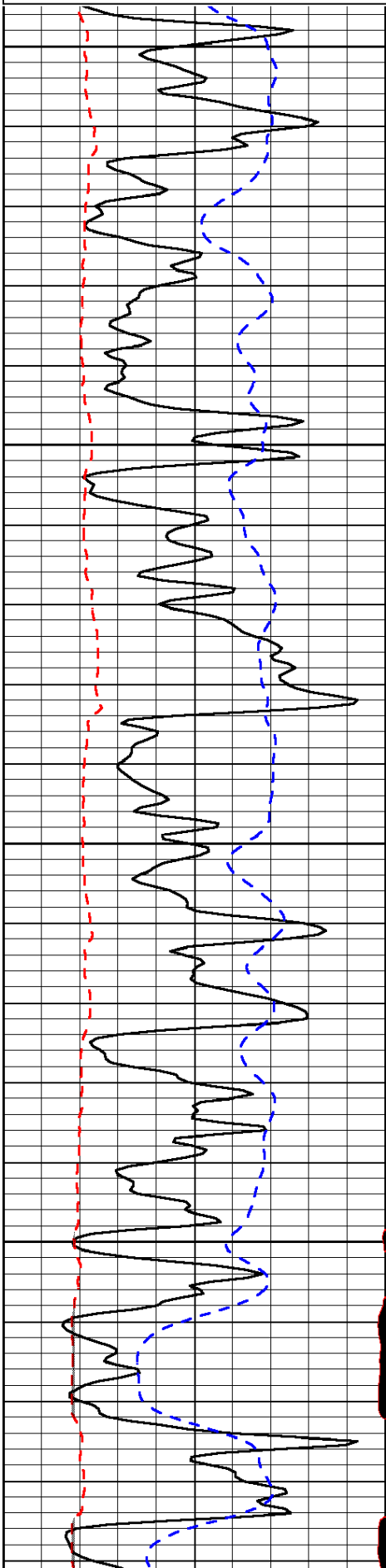
Healy KS, 10 N, W Into

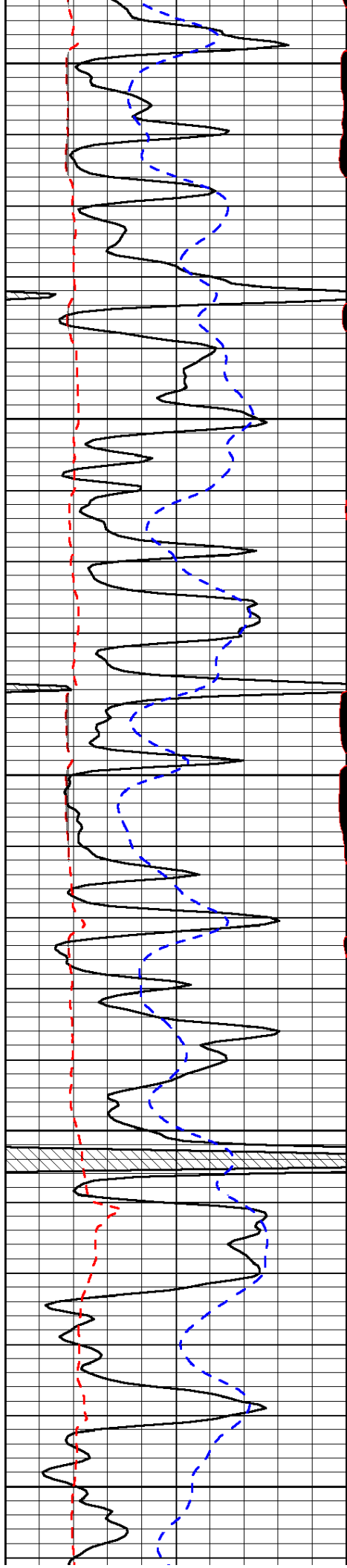
Database File:	murfhd.db
Dataset Pathname:	dil/murfstk
Presentation Format:	micro
Dataset Creation:	Mon Nov 17 10:31:56 2014
Charted by:	Depth in Feet scaled 1:240

0	Gamma Ray	150
6	MCAL (GAPI)	16
2.875	Mud Cake (GAPI)	7.875
-200	SP (mV)	0

0	Micro Inverse 1 X 1	40
0	Micro Normal 2"	40
10000	Line Weight	0

LSPD





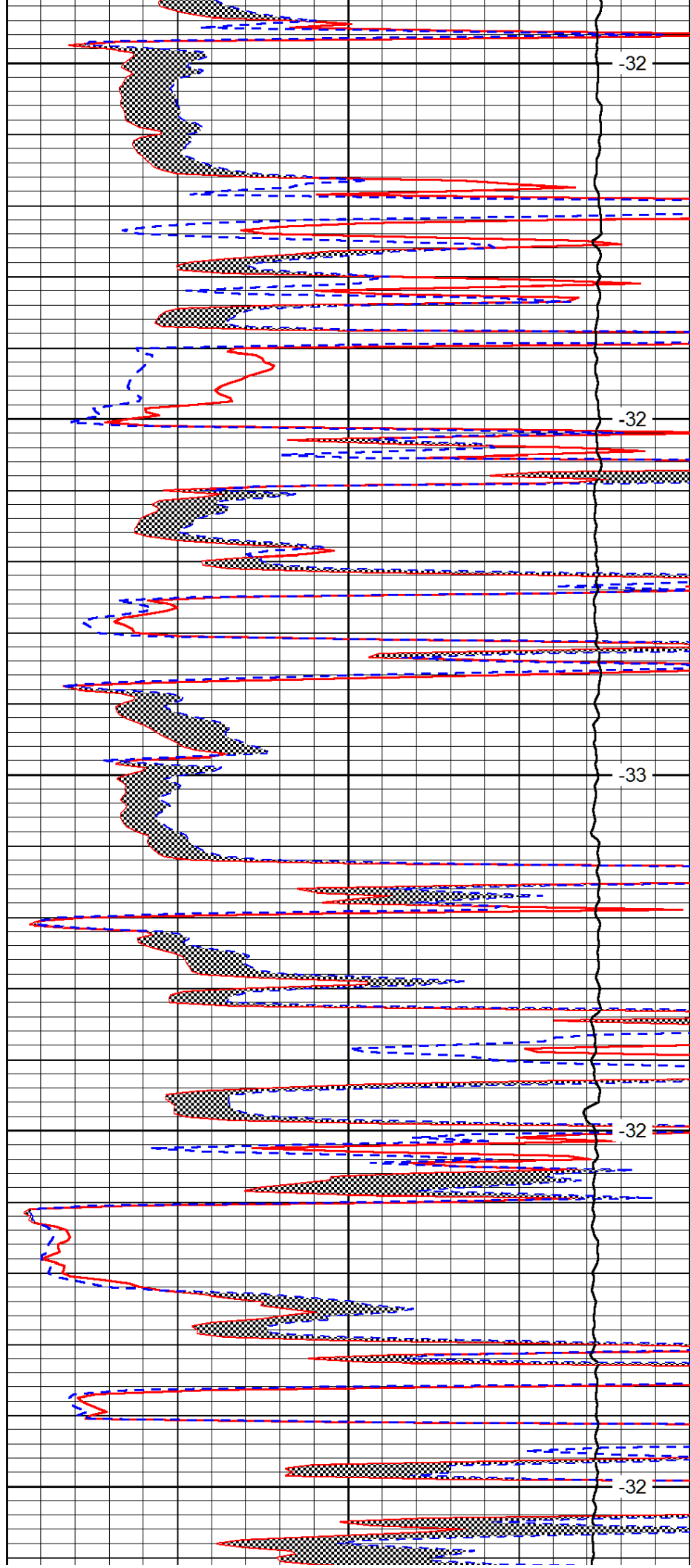
3500

3550

3600

3650

3700



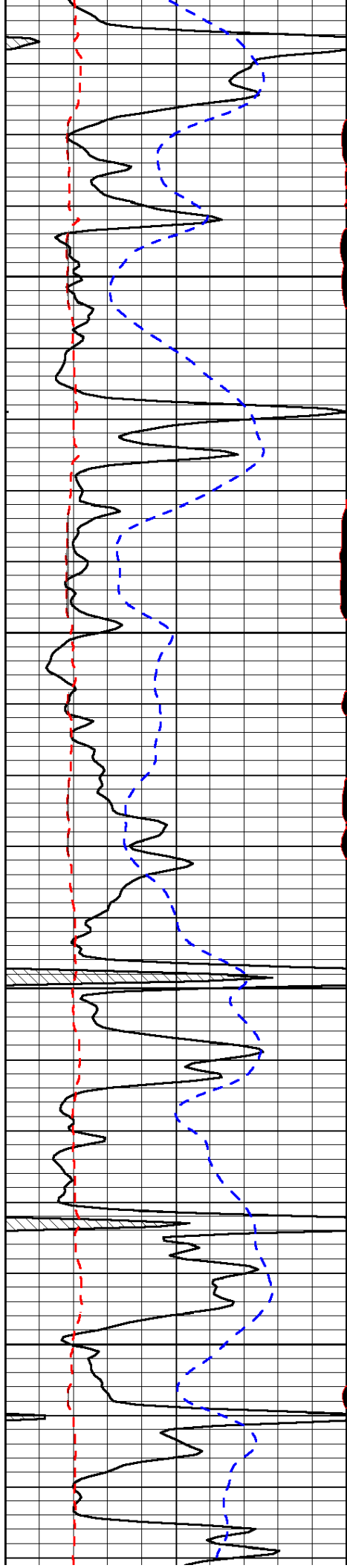
-32

-32

-33

-32

-32

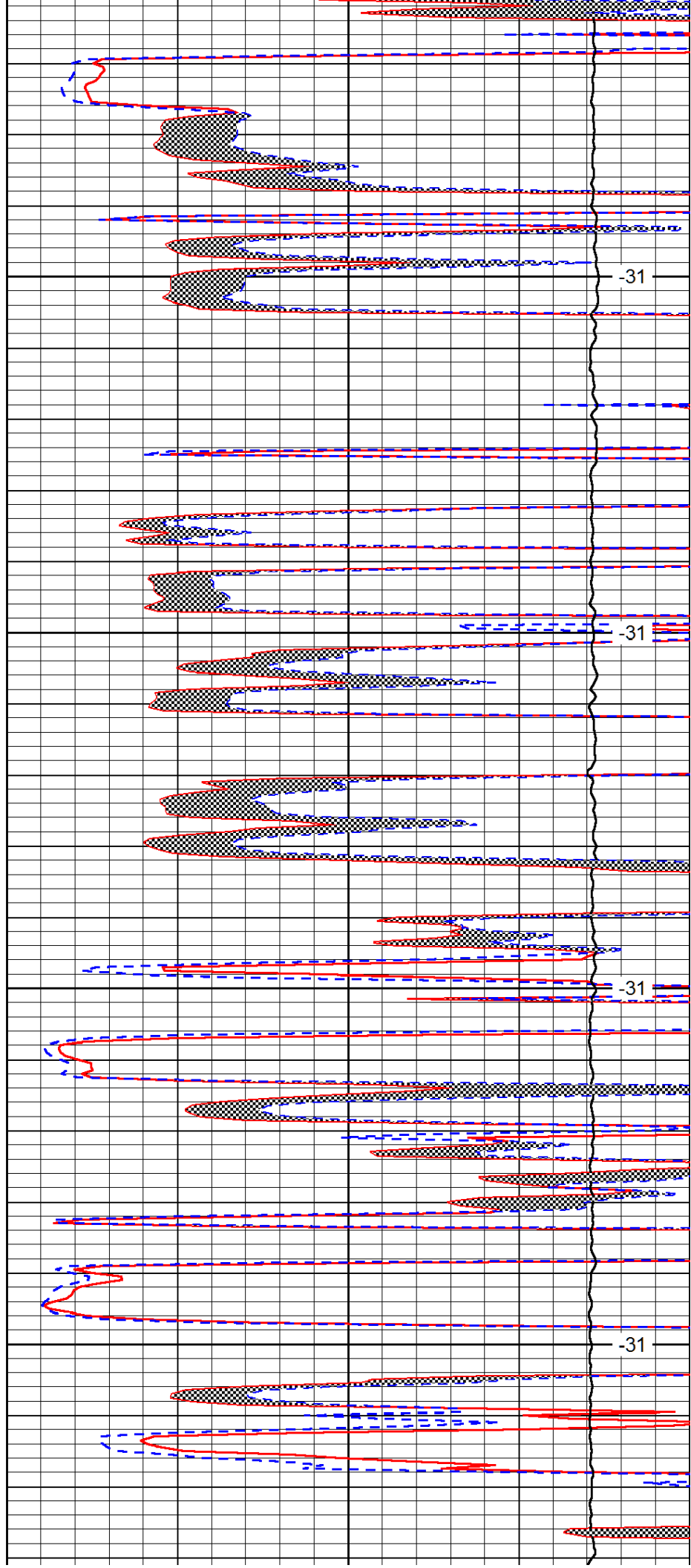


3750

3800

3850

3900

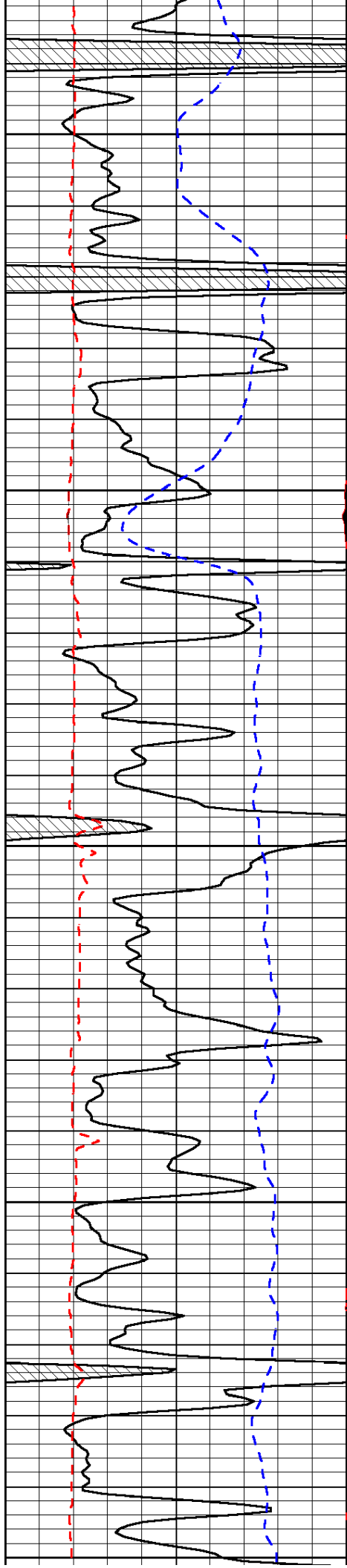


-31

-31

-31

-31



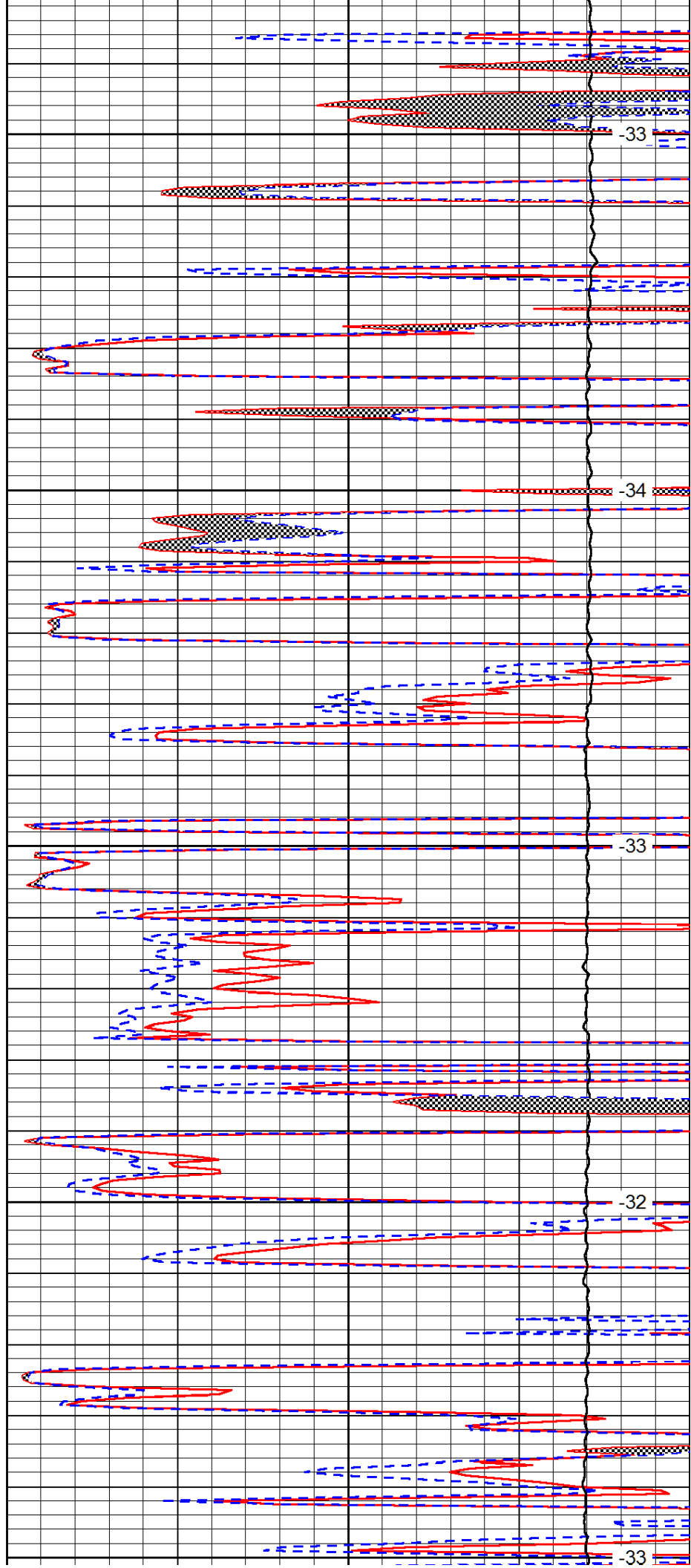
3950

4000

4050

4100

4150



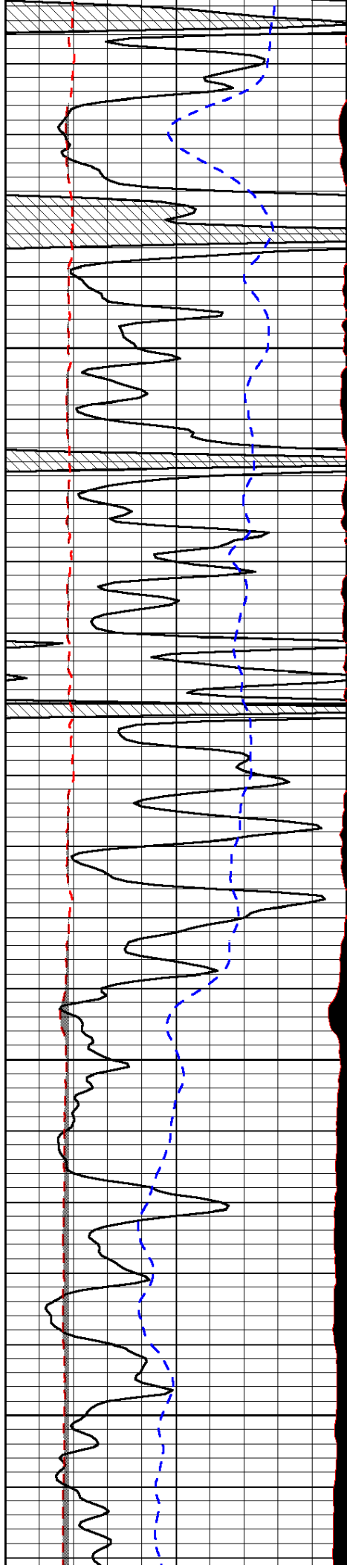
-33

-34

-33

-32

-33

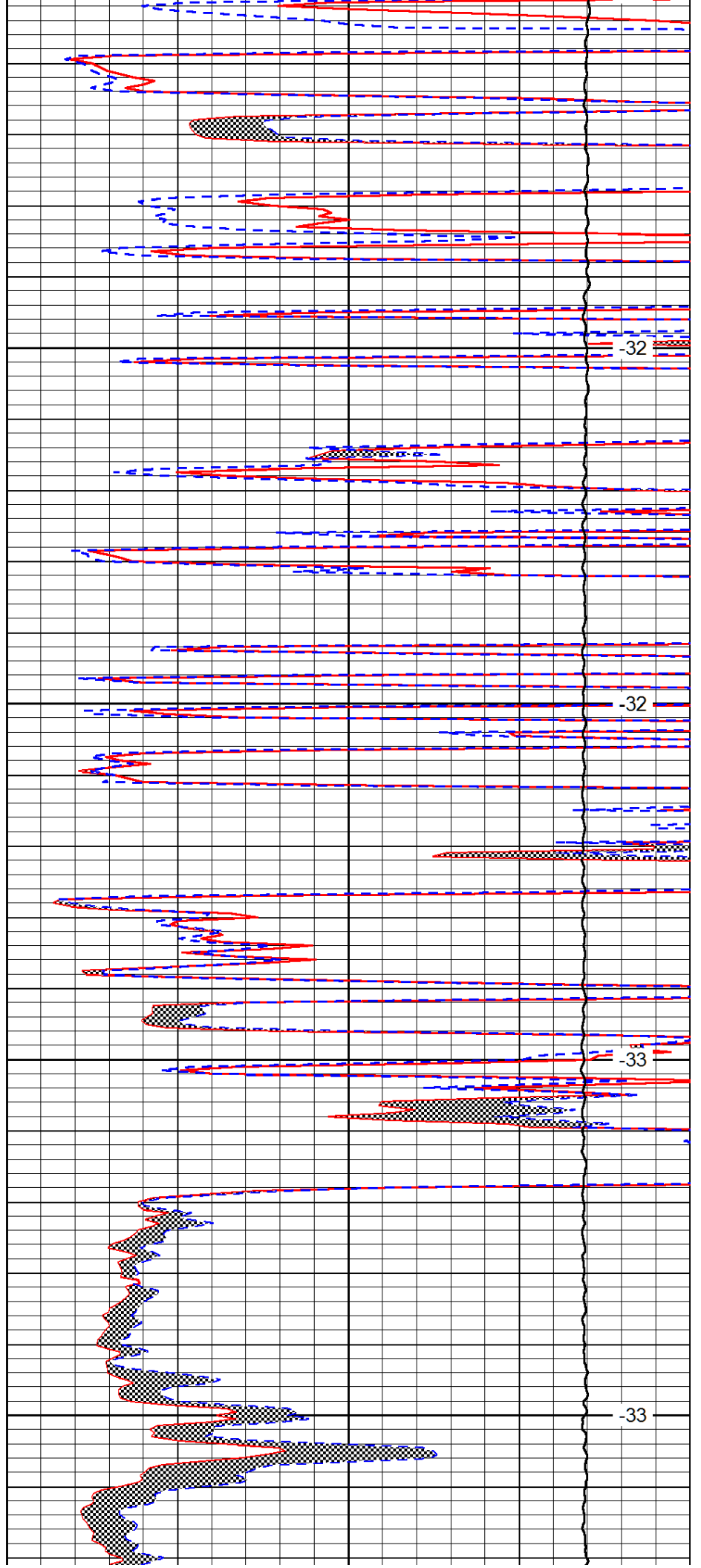


4200

4250

4300

4350

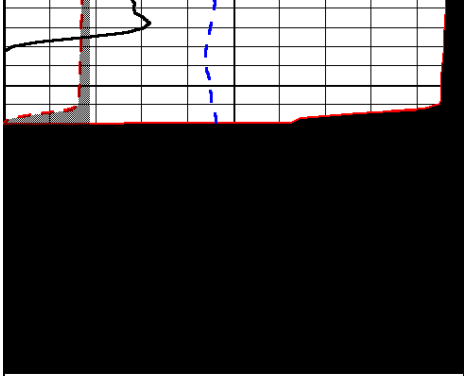


-32

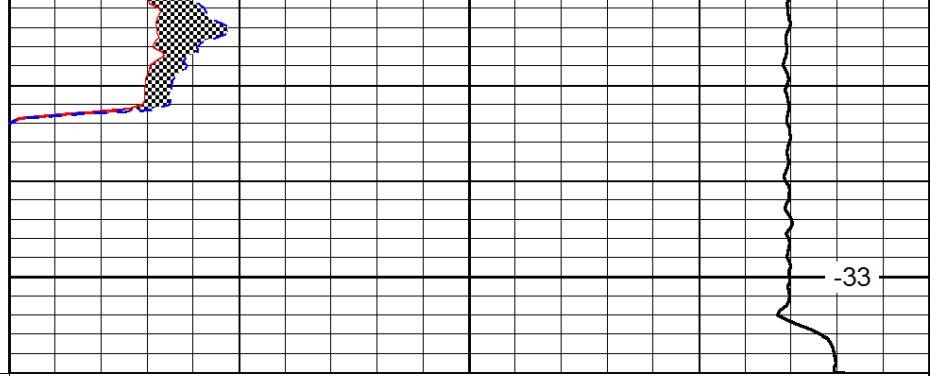
-32

-33

-33



4400



-33

0	Gamma Ray	150
6	MCAL (GAPI)	16
2.875	Mud Cake (GAPI)	7.875
-200	SP (mV)	0

0	Micro Inverse 1 X 1	40
0	Micro Normal 2"	40
10000	Line Weight	0

LSPD