



Pioneer Energy Services

Microresistivity Log

15-185-23,906-00-00

API No.

Company **Mai Oil Operations, Inc.**

Well **Hammeke 'B' #3**

Field **Syms Southeast**

County **Stafford** State **Kansas**

Location **N/2 SE SE SE 620' FSL & 330' FEL**

Sec: **21** Twp: **21S** Rge: **12W**

Permanent Datum **Ground Level** Elevation **1843**

Log Measured From **Kelly Bushing** 8 Ft. Above Perm. Datum

Drilling Measured From **Frontkelly Bushing** K.B. 1851
D.F. 1843
G.L. 1843

Elevation

Other Services
CNL/CDL
DIL

Date 10/19/2014

Run Number Two

Depth Driller 3715

Depth Logger 3715

Bottom Logged Interval 3714

Top Log Interval 2100

Casing Driller 8.625 @ 640

Casing Logger 640

Bit Size 7.875

Type Fluid in Hole Chemical

Salinity, ppm CL 6.250

Density / Viscosity 8.9 43

pH / Fluid Loss 9.0 9.6

Source of Sample Flowline

Rm @ Meas. Temp 7 @ 68

Rmf @ Meas. Temp .53 @ 68

Rmc @ Meas. Temp .95 @ 68

Source of Rmf / Rmc Charts

Rm @ BHT .42 @ 113

Operating Rig Time 4 Hours

Max Rec. Temp. F 113

Equipment Number 10

Location Hays

Recorded By C. Desaire

Witnessed By Jim Mulsgrove

<<< Fold Here >>>

All interpretations are opinions based on inferences from electrical or other measurements and we cannot and do not guarantee the accuracy or correctness of any interpretation, and we shall not, except in the case of gross or willful negligence on our part, be liable or responsible for any loss, costs, damages, or expenses incurred or sustained by anyone resulting from any interpretation made by any of our officers, agents or employees. These interpretations are also subject to our general terms and conditions set out in our current Price Schedule.

Comments

Thank you for using Pioneer Energy Services
www.pioneeres.com
785 625 3858

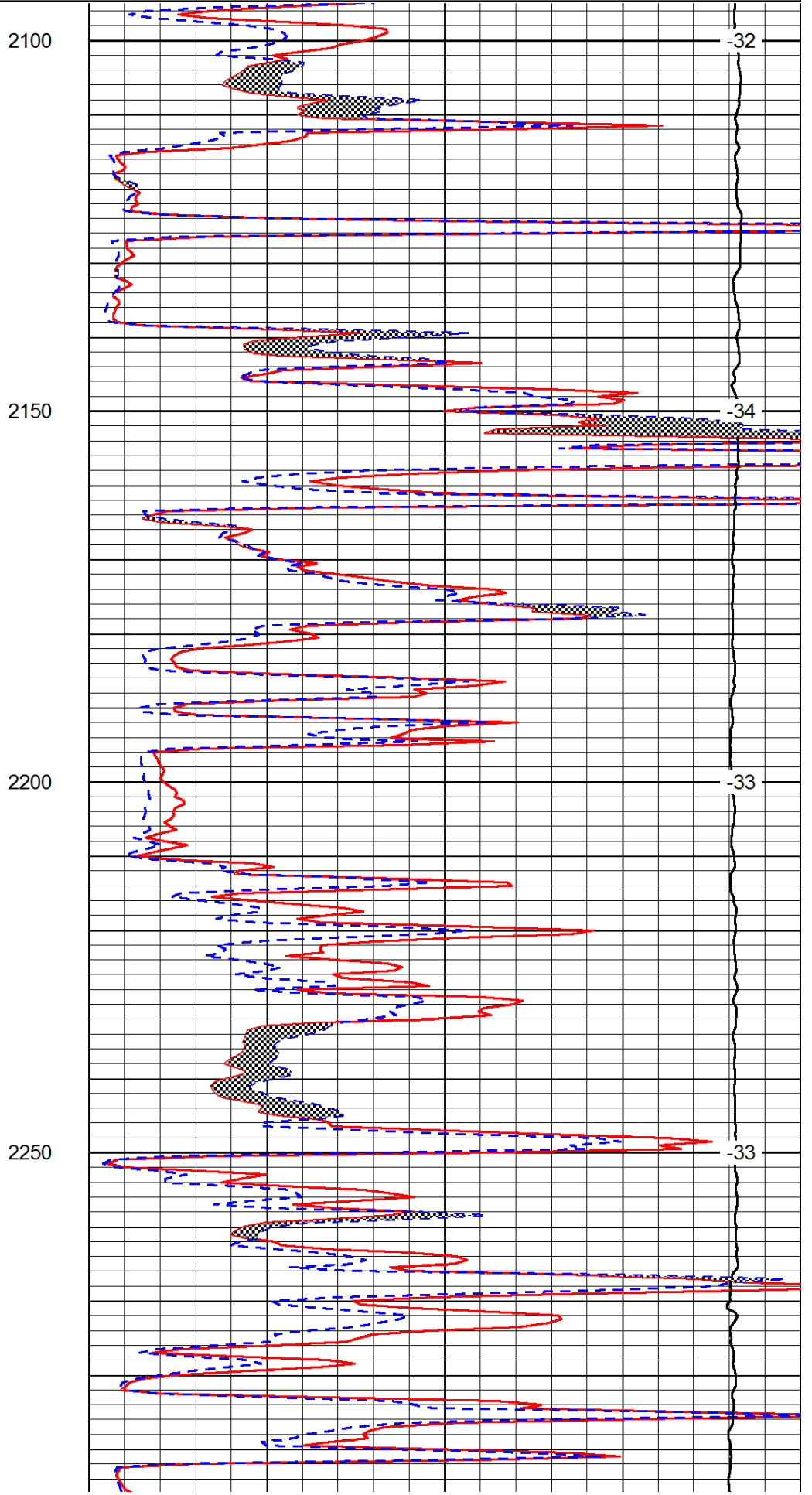
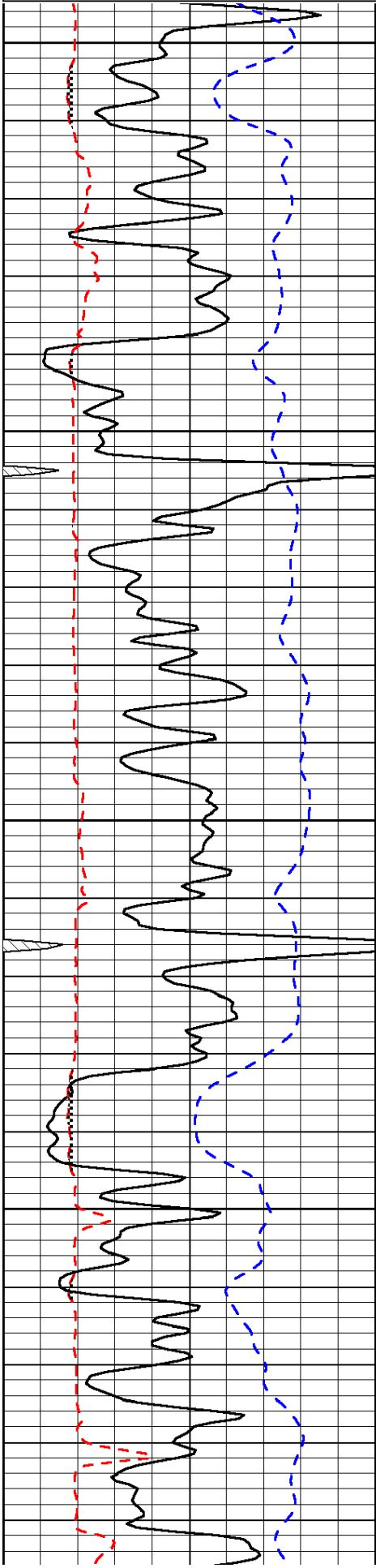
Great Bend KS, 11 S to 170th St,
6 E, 1/8 N, W Into

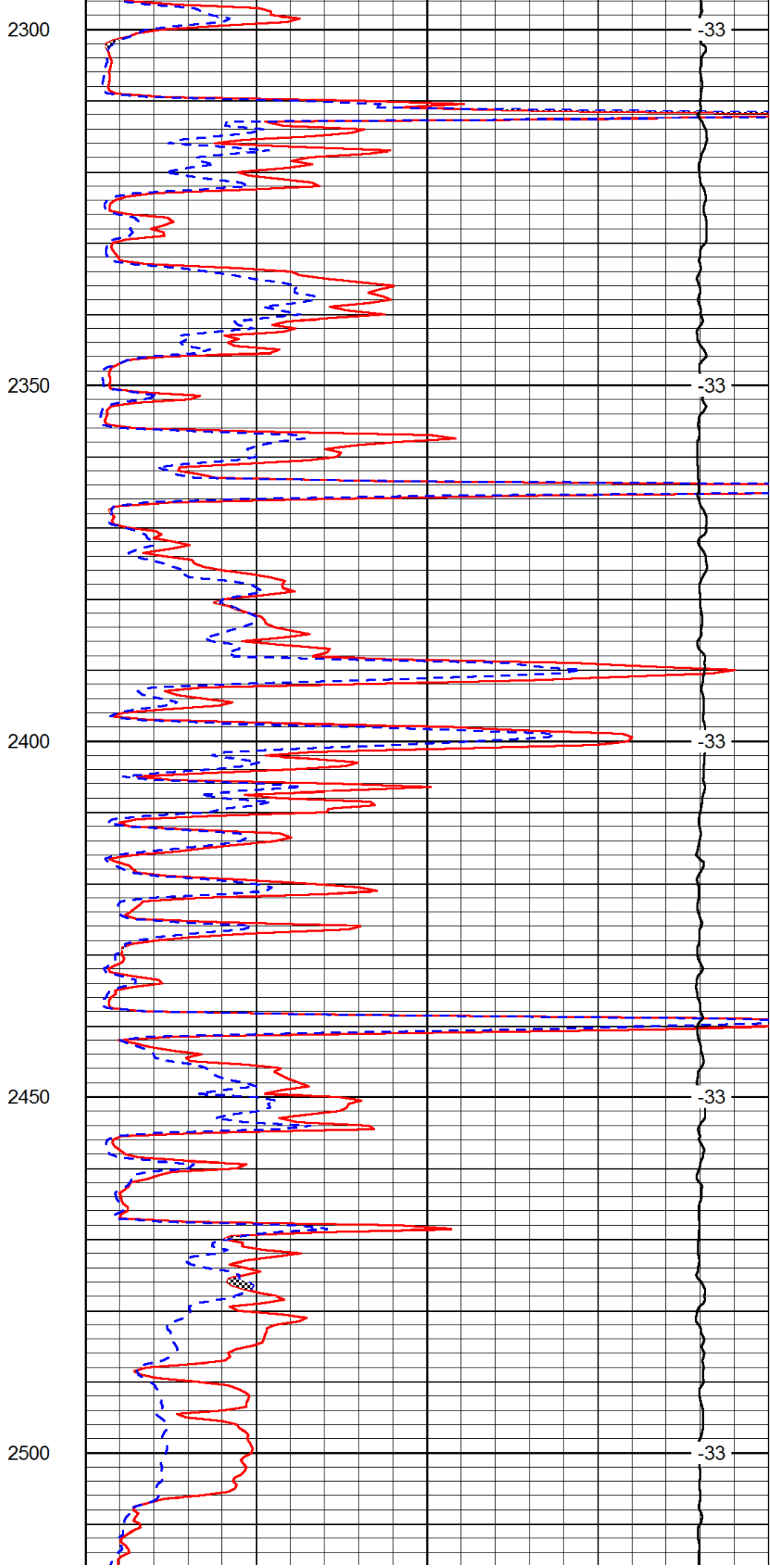
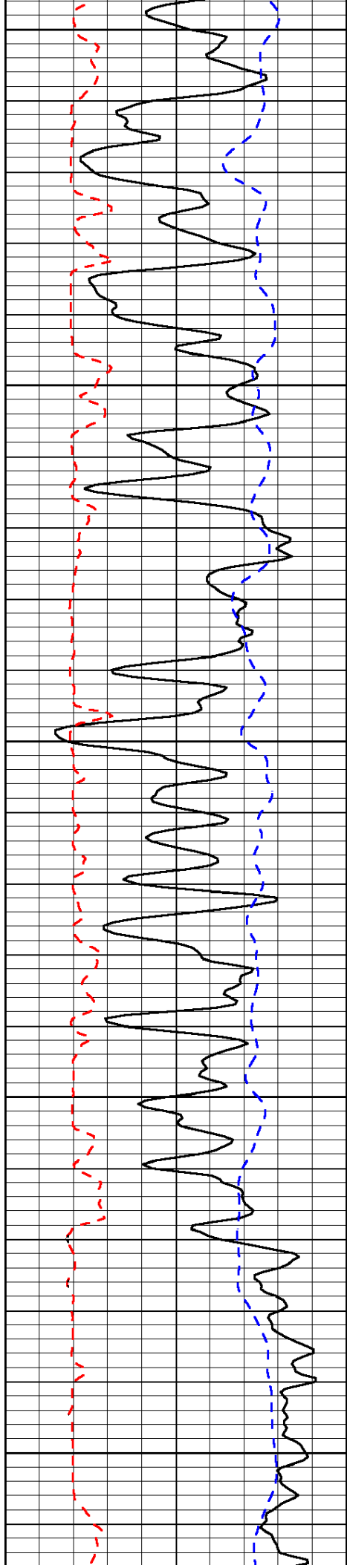
Database File: c:\warrior\data\mai oil_hammeke 'b' #3\maihd.db
Dataset Pathname: dil\maistk
Presentation Format: micro
Dataset Creation: Sun Oct 19 23:05:51 2014
Charted by: Depth in Feet scaled 1:240

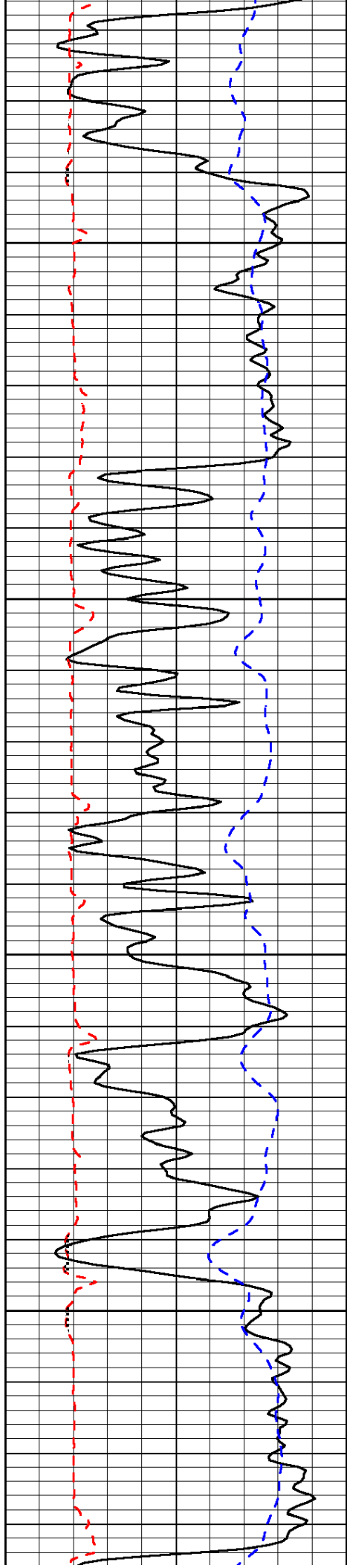
0	Gamma Ray	150
6	MCAL (GAPI)	16
-200	SP (mV)	0

0	Micro Inverse 1 X 1	40
0	Micro Normal 2"	40
15000	Line Weight	0

LSPD





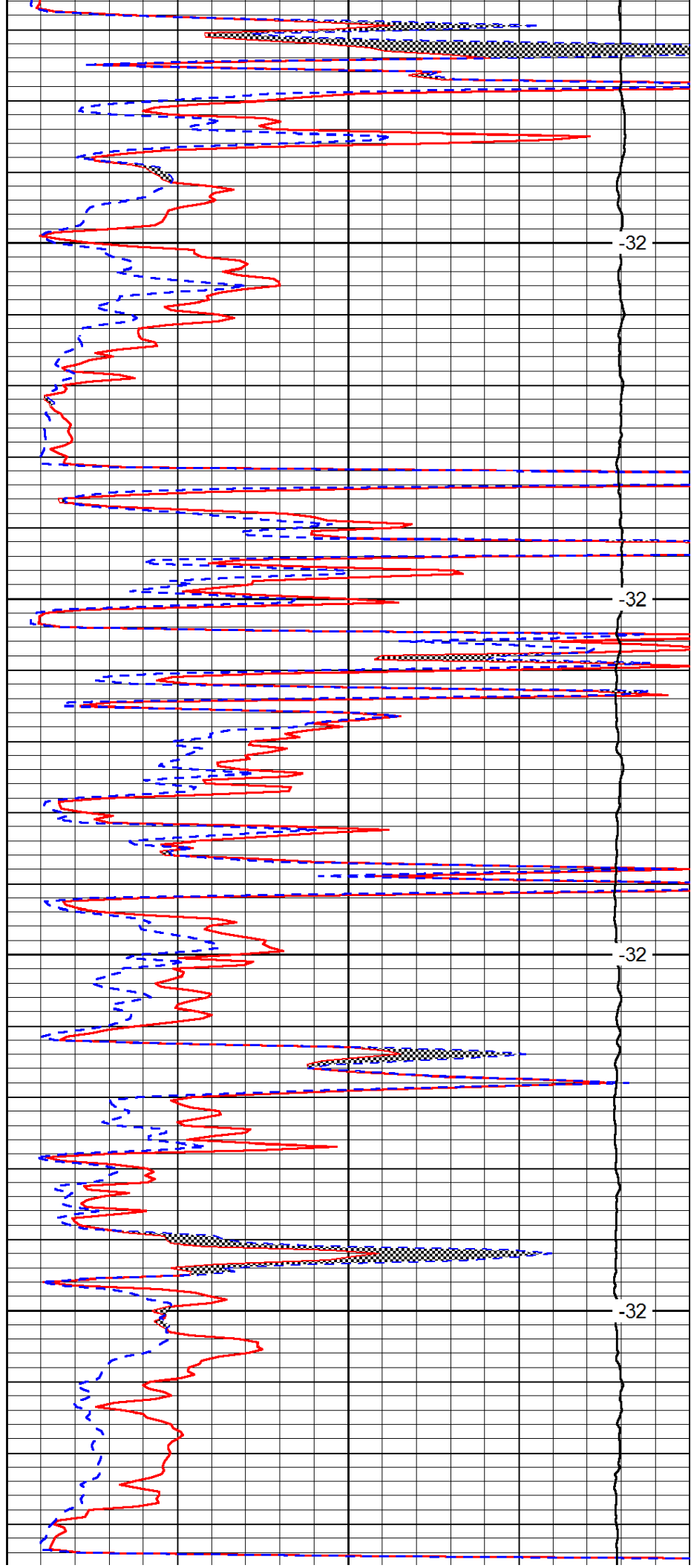


2550

2600

2650

2700

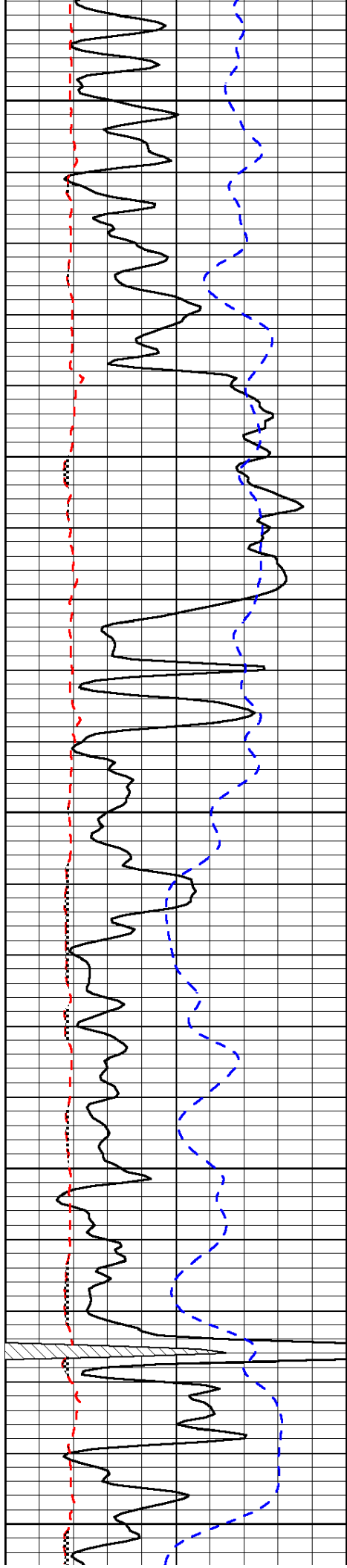


-32

-32

-32

-32



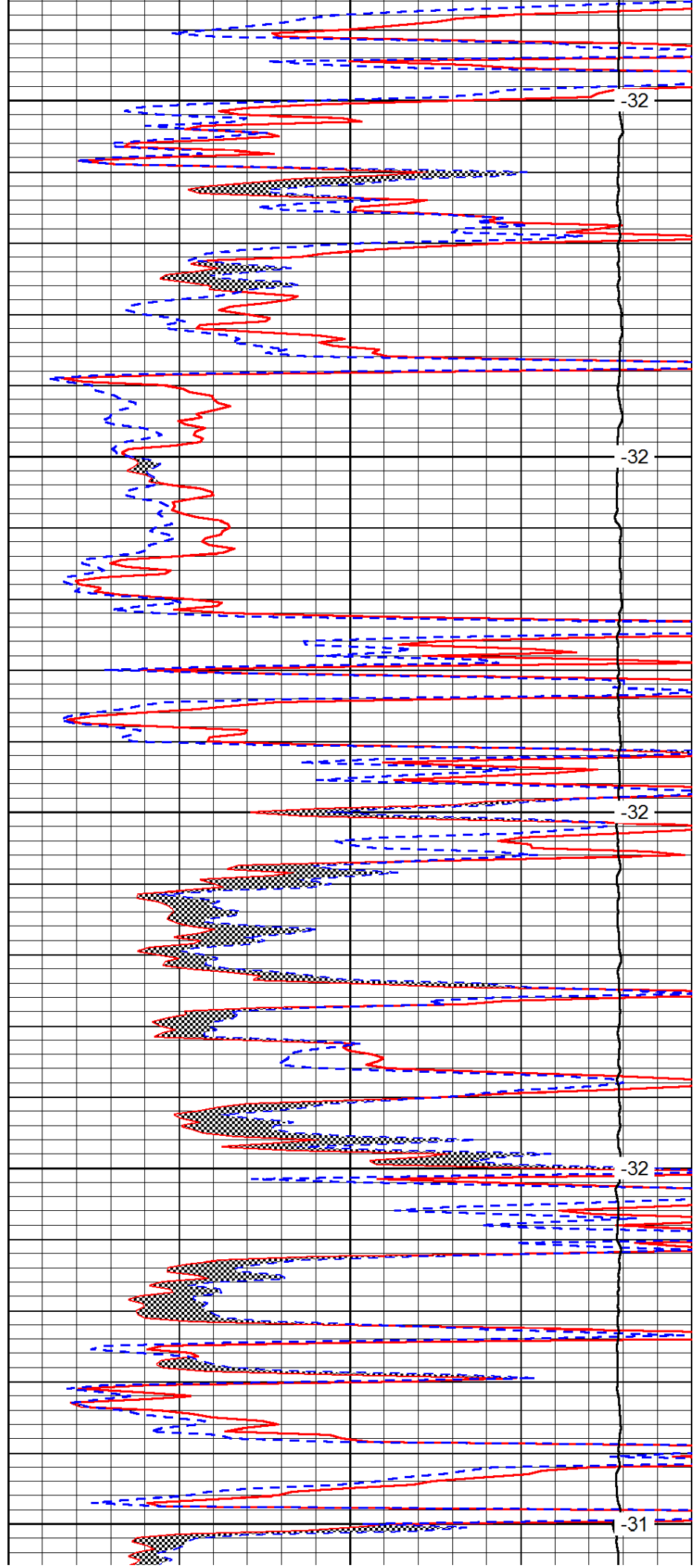
2750

2800

2850

2900

2950



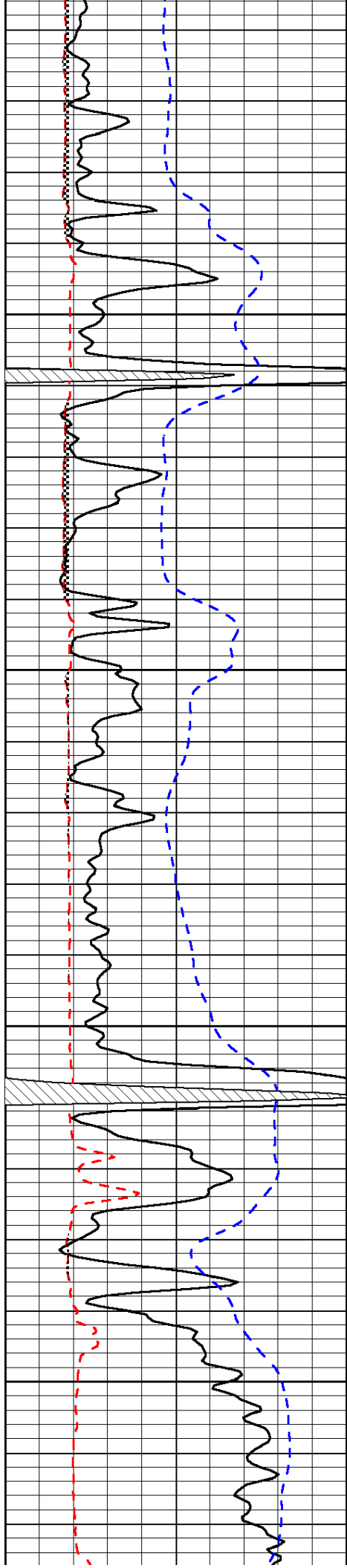
-32

-32

-32

-32

-31

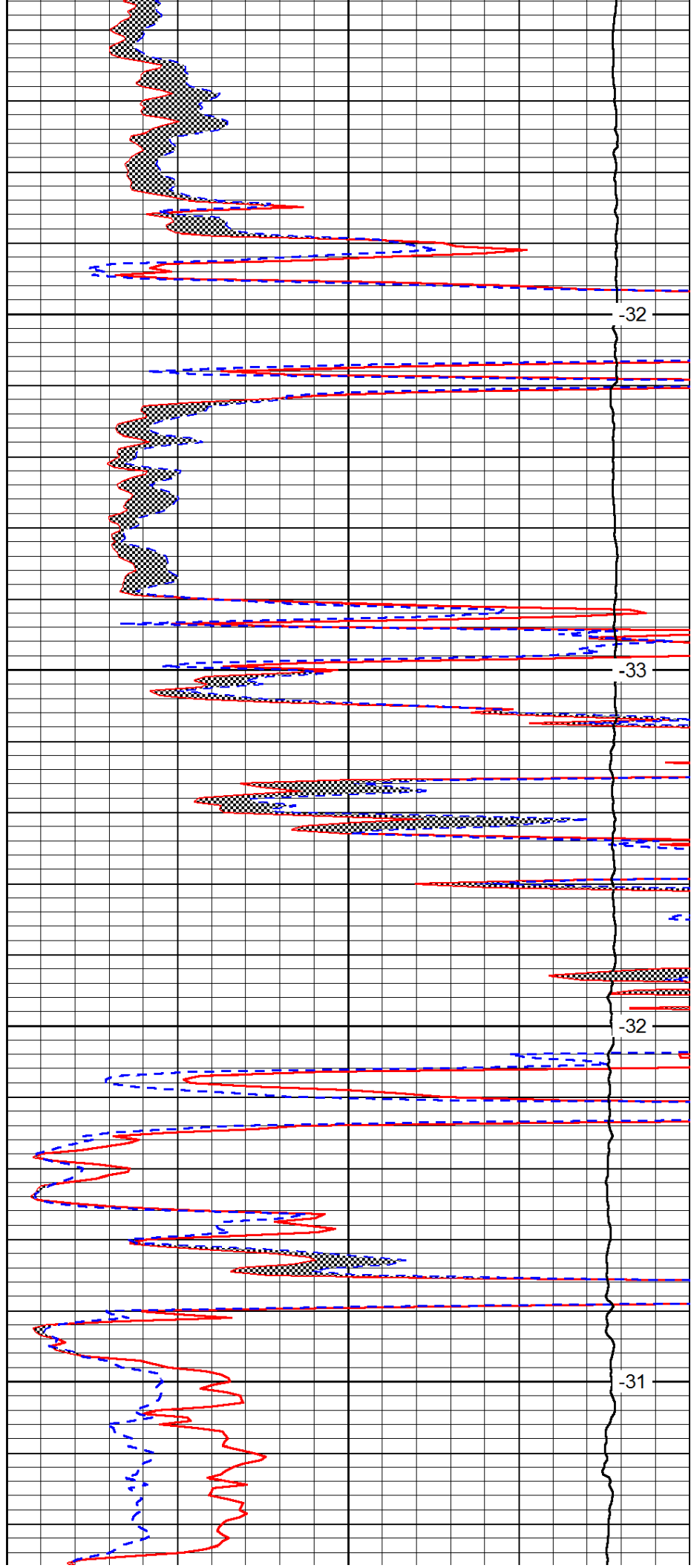


3000

3050

3100

3150

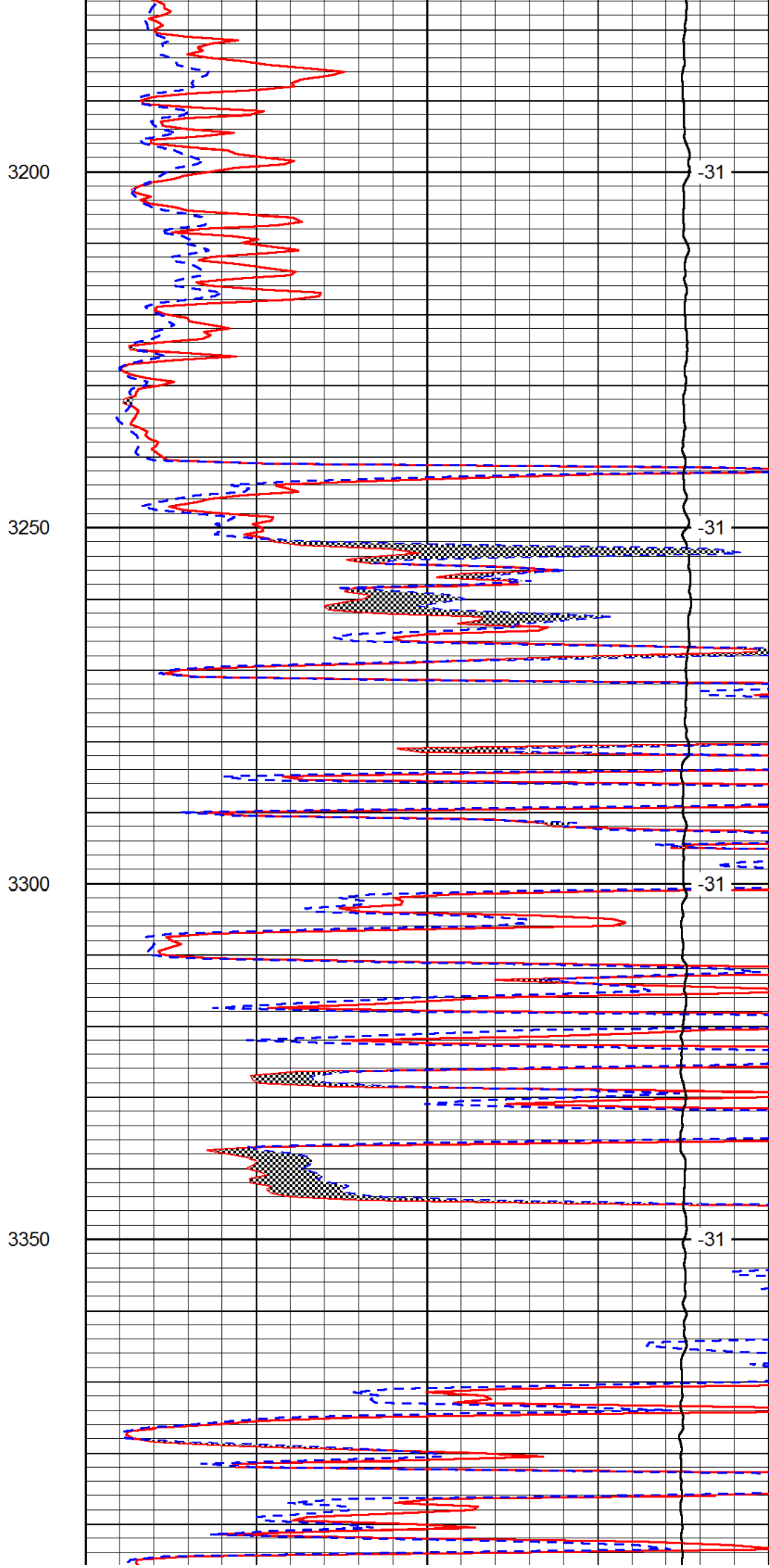
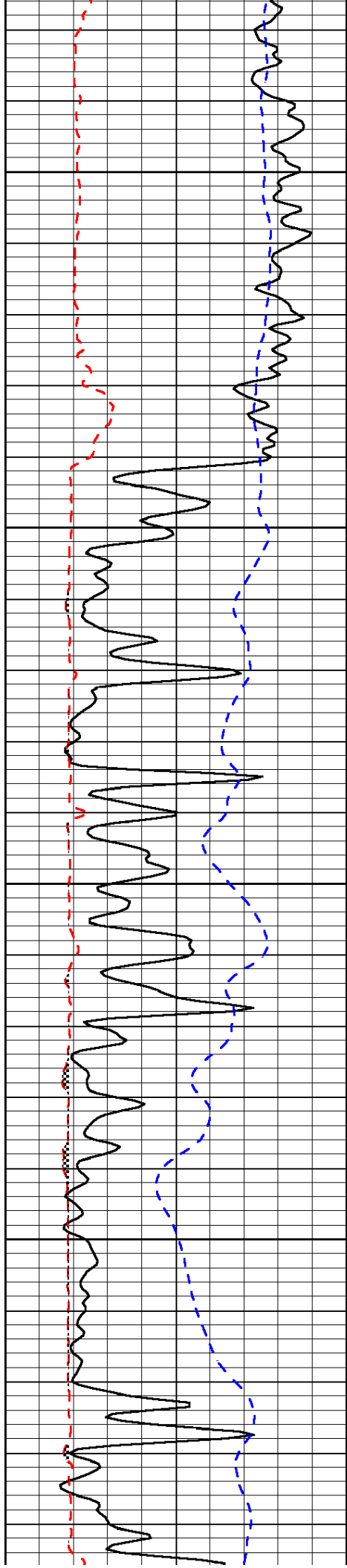


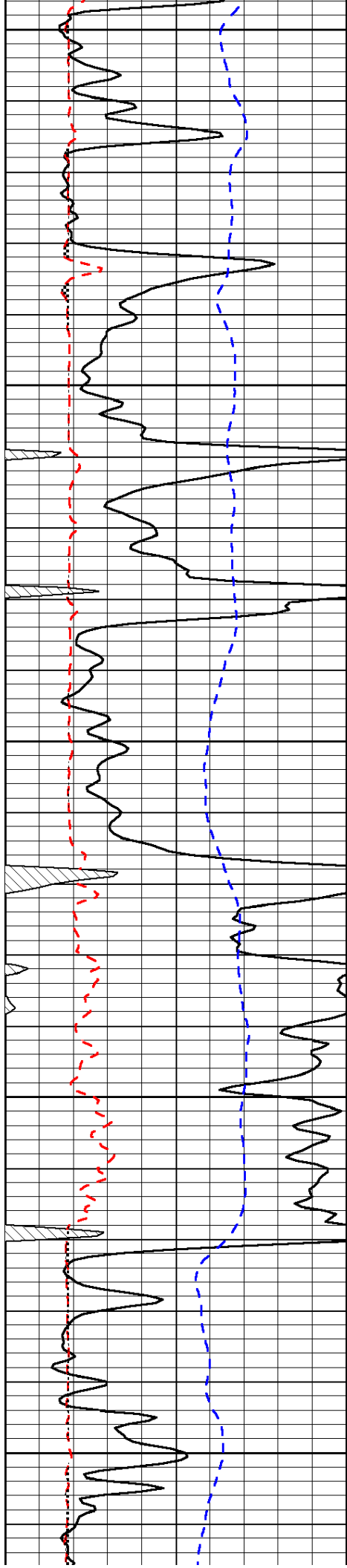
-32

-33

-32

-31





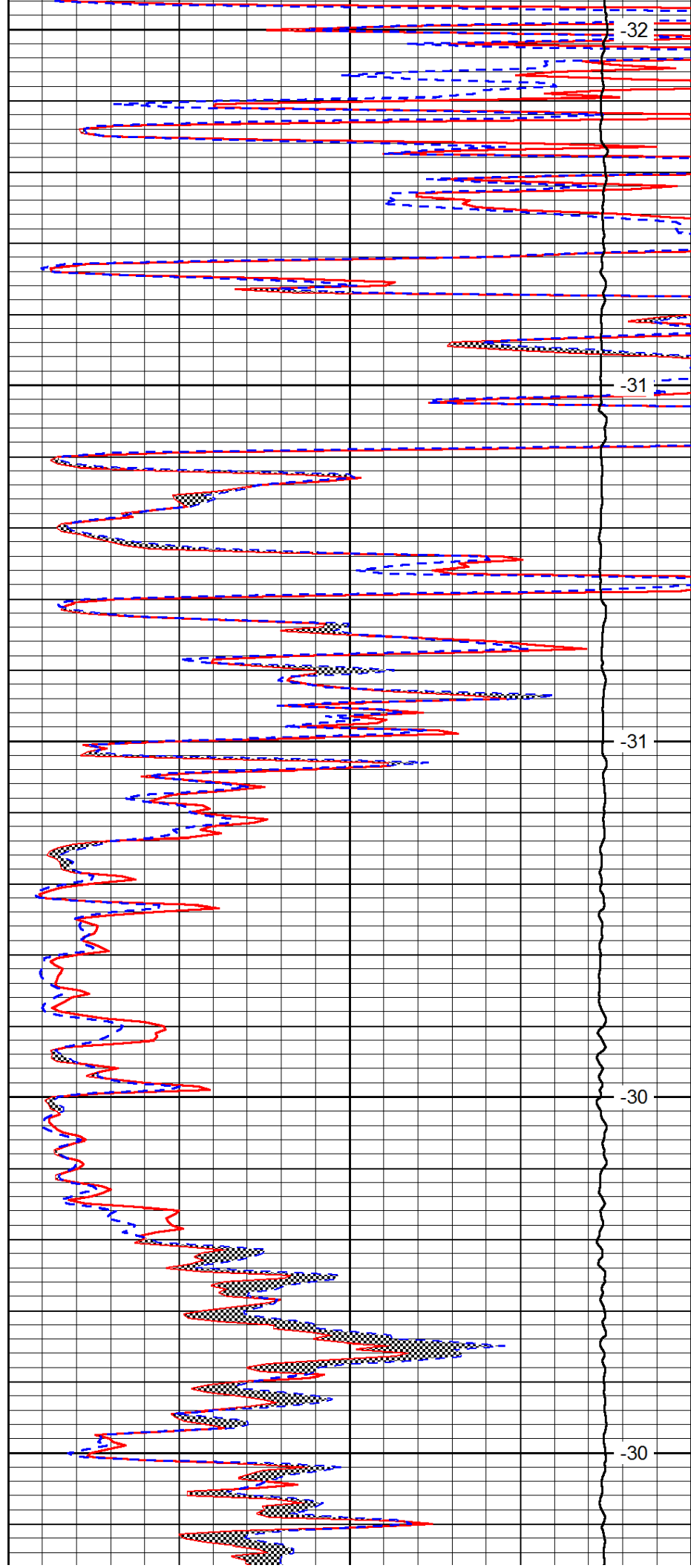
3400

3450

3500

3550

3600



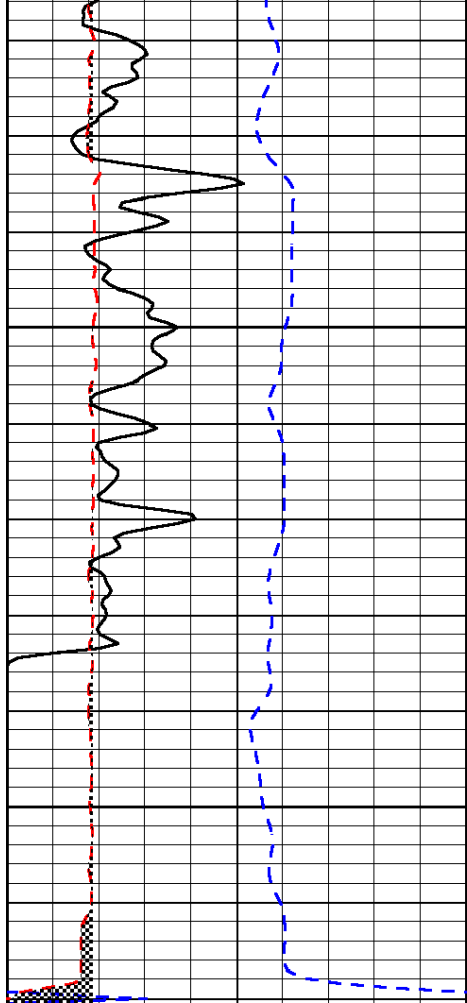
-32

-31

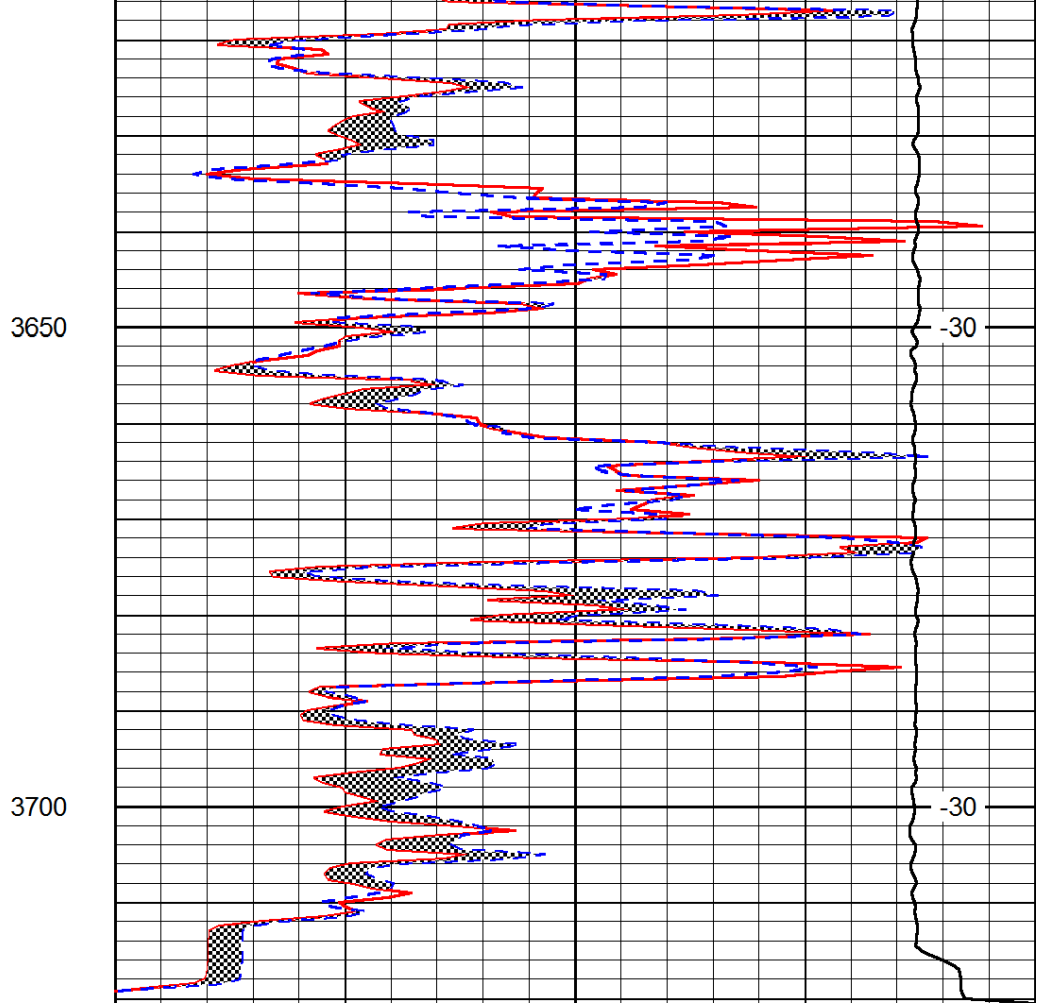
-31

-30

-30



0	Gamma Ray	150
6	MCAL (GAPI)	16
-200	SP (mV)	0



0	Micro Inverse 1 X 1	40
0	Micro Normal 2"	40
15000	Line Weight	0

LSPD