



Pioneer Energy Services

Dual Compensated Porosity Log

15-185-23,906-00-00

API No.

Company **Mai Oil Operations, Inc.**

Well **Hammeke 'B' #3**

Field **Syms Southeast**

County **Stafford** State **Kansas**

Location

**N/2 SE SE SE
620' FSL & 330' FEL**

Other Services
DIL
MEL

Sec: **21** Twp: **21S** Rge: **12W**

Permanent Datum **Ground Level** Elevation **1843**

Log Measured From **Kelly Bushing** 8 Ft. Above Perm. Datum

Drilling Measured From **Kelly Bushing**

Elevation

K.B. 1851

D.F. 1843

Date **10/19/2014**

Run Number **One**

Type Log **CNL / CDL**

Depth Driller **3715**

Depth Logger **3715**

Bottom Logged Interval **3694**

Top Logged Interval **2100**

Type Fluid In Hole **Chemical**

Salinity, PPM CL **6,250**

Density **8.9**

Level **Full**

Max. Rec. Temp. F **113**

Operating Rig Time **4 Hours**

Equipment -- Location **10 Hays**

Recorded By **C. Desaire**

Witnessed By **Jim Musgrove**

Borehole Record

Run No	Bit	From	To	Size	Wgt.	From	To
1	12.25	00	640	8.625	24#	00	640
2	7.875	640	3715				

Casing Record

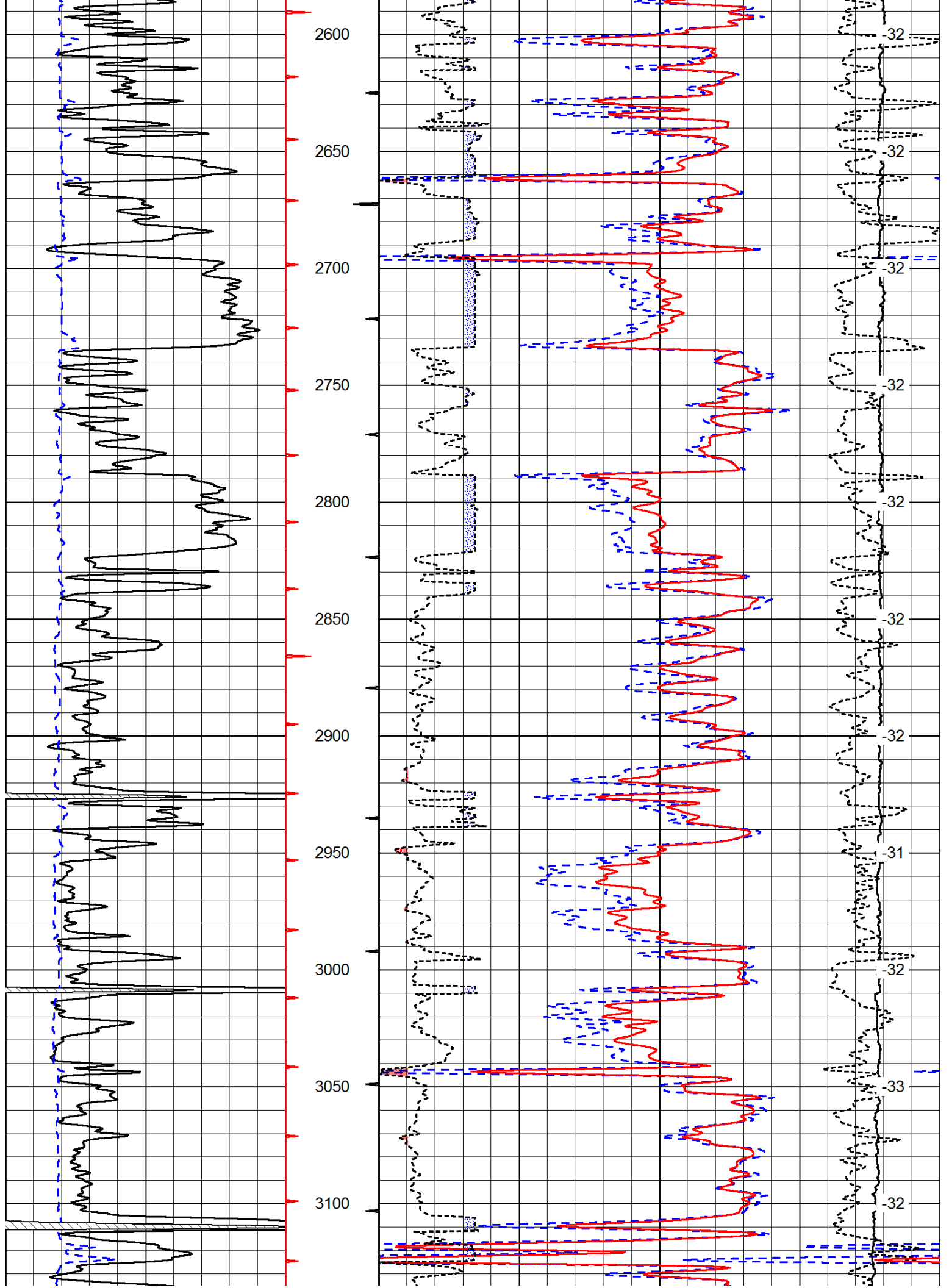
<<< Fold Here >>>

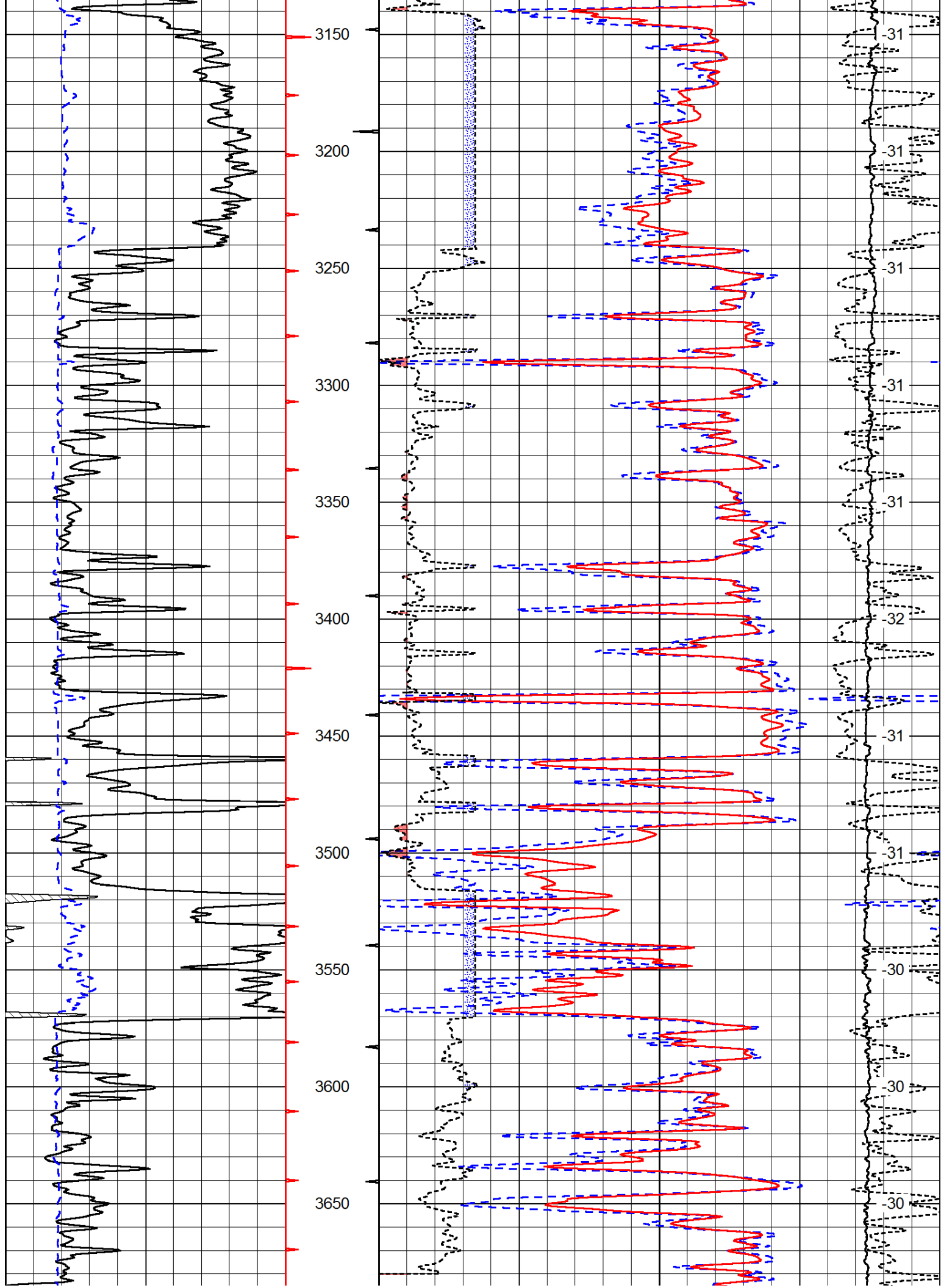
All interpretations are opinions based on inferences from electrical or other measurements and we cannot and do not guarantee the accuracy or correctness of any interpretation, and we shall not, except in the case of gross or willful negligence on our part, be liable or responsible for any loss, costs, damages, or expenses incurred or sustained by anyone resulting from any interpretation made by any of our officers, agents or employees. These interpretations are also subject to our general terms and conditions set out in our current Price Schedule.

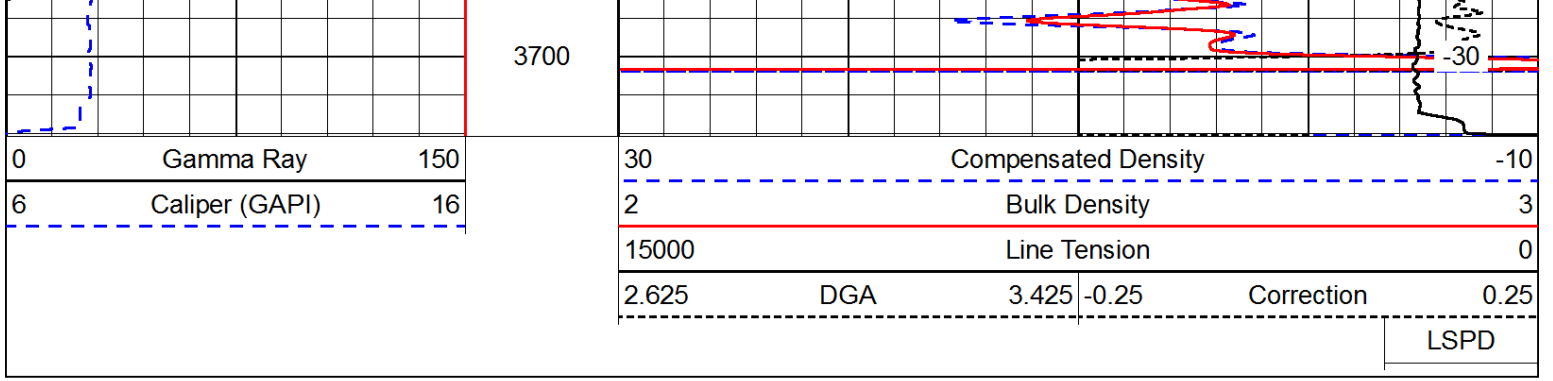
Comments

Thank you for using Pioneer Energy Services
www.pioneeres.com
 785 625 3858
 Great Bend KS, 11 S to 170th St,
 6 E, 1/8 N, W Into

Database File: c:\warrior\data\mai oil_hammeke 'b' #3\maihd.db
 Dataset Pathname: dil\maistk
 Presentation Format: cdl
 Dataset Creation: Sun Oct 19 23:05:51 2014
 Charted by: Depth in Feet scaled 1:600







Database File: c:\warrior\data\mai oil_hammeke 'b' #3\maihd.db
 Dataset Pathname: dil/maistk
 Presentation Format: cndlspec
 Dataset Creation: Sun Oct 19 23:05:51 2014
 Charted by: Depth in Feet scaled 1:240

