



Pioneer Energy Services

Dual Induction Log

15-185-23,906-00-00

API No.

Company **Mai Oil Operations, Inc.**

Well **Hammeke 'B' #3**

Field **Syms Southeast**

County **Stafford** State **Kansas**

Location **N/2 SE SE SE
620' FSL & 330' FEL**

Sec: **21**

Twp: **21S** Rge: **12W**

Other Services
CNL/CDL
MEL

Elevation

K.B. 1851
D.F. 1843
G.L. 1843

Permanent Datum **Ground Level** Elevation **1843**

Log Measured From **Kelly Bushing** 8 Ft. Above Perm. Datum

Drilling Measured From **Front Kelly Bushing**

Date **10/19/2014**

Run Number **One**

Depth Driller **3715**

Depth Logger **3715**

Bottom Logged Interval **3714**

Top Log Interval **600**

Casing Driller **8.625 @ 640**

Casing Logger **640**

Bit Size **7.875**

Type Fluid in Hole **Chemical**

Salinity, ppm CL **6.250**

Density / Viscosity **8.9 43**

pH / Fluid Loss **9.0 9.6**

Source of Sample **Flowline**

Rm @ Meas. Temp **.7 @ 68**

Rmf @ Meas. Temp **.53 @ 68**

Rmc @ Meas. Temp **.95 @ 68**

Source of Rmf / Rmc **Charts**

Rm @ BHT **.42 @ 113**

Operating Rig Time **4 Hours**

Max Rec. Temp. F **113**

Equipment Number **10**

Location **Hays**

Recorded By **C. Desaire**

Witnessed By **Jim Musgrove**

<<< Fold Here >>>

All interpretations are opinions based on inferences from electrical or other measurements and we cannot and do not guarantee the accuracy or correctness of any interpretation, and we shall not, except in the case of gross or willful negligence on our part, be liable or responsible for any loss, costs, damages, or expenses incurred or sustained by anyone resulting from any interpretation made by any of our officers, agents or employees. These interpretations are also subject to our general terms and conditions set out in our current Price Schedule.

Comments

Thank you for using Pioneer Energy Services
www.pioneeres.com
785 625 3858

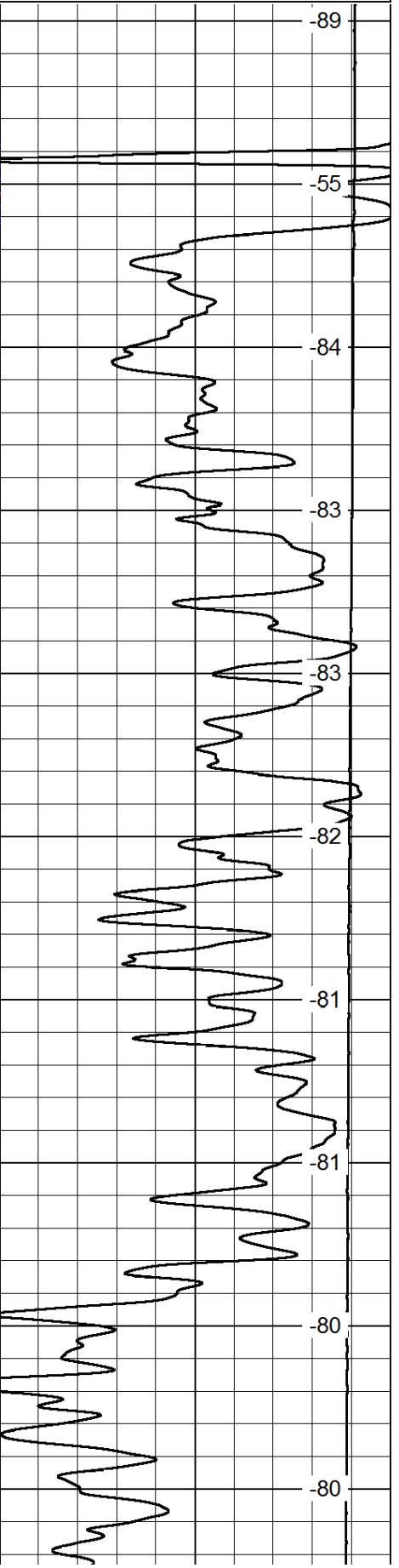
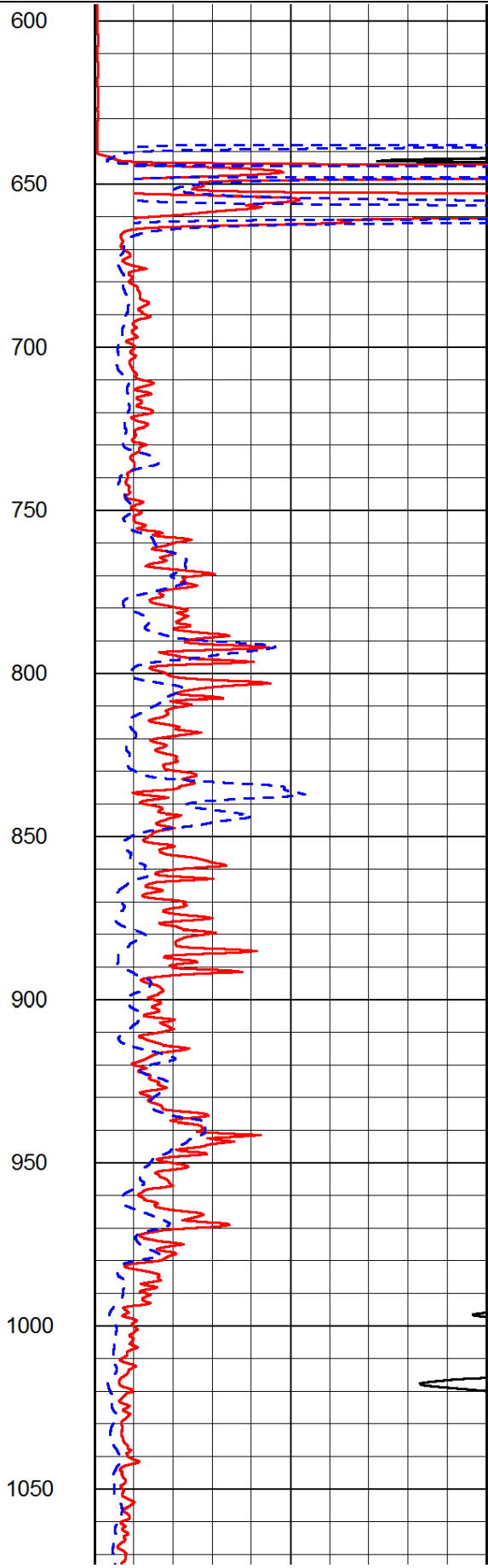
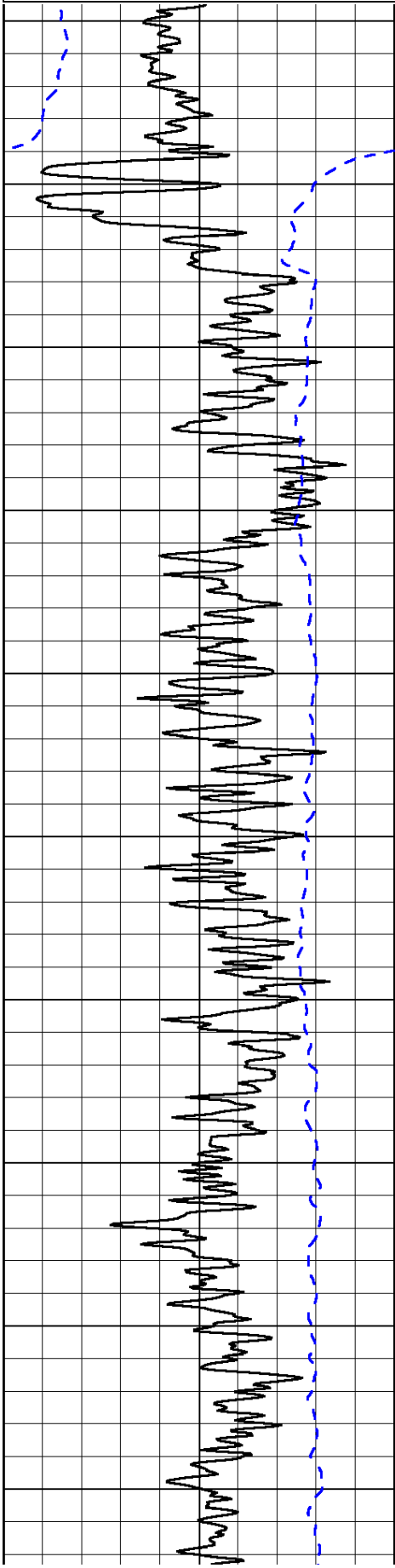
Great Bend KS, 11 S to 170th St,
6 E, 1/8 N, W Into

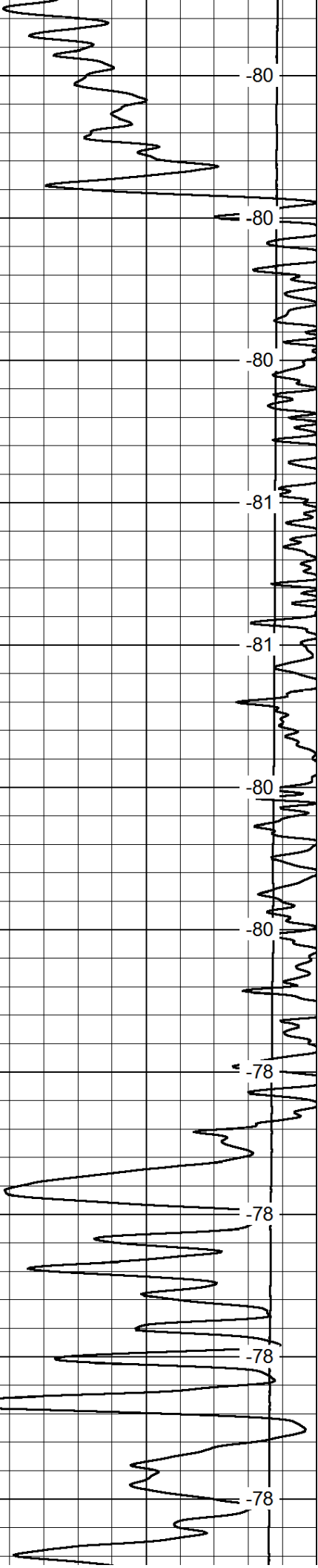
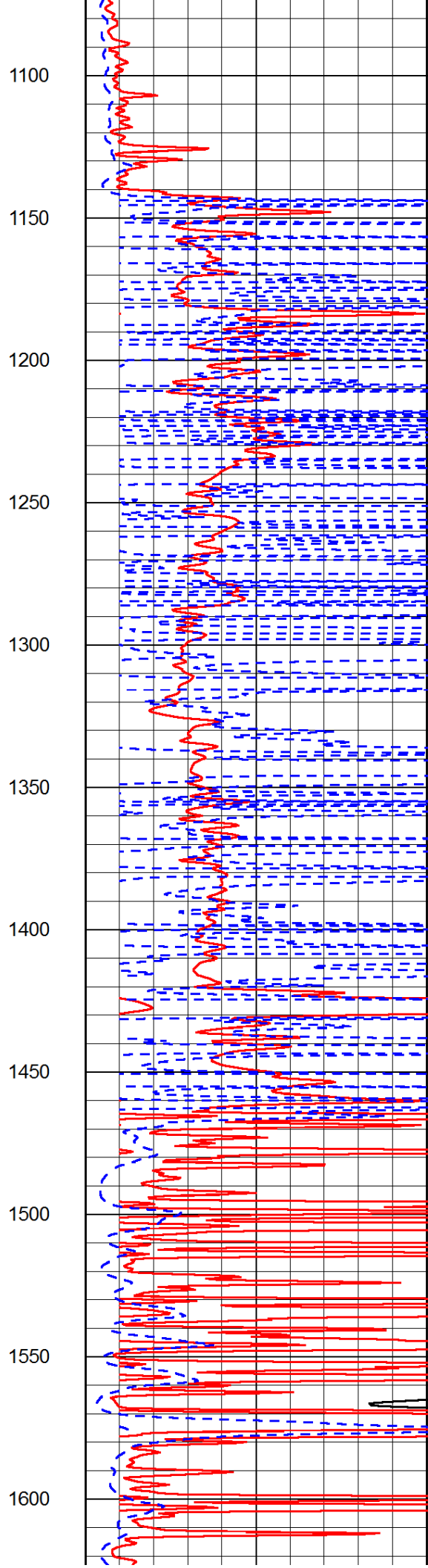
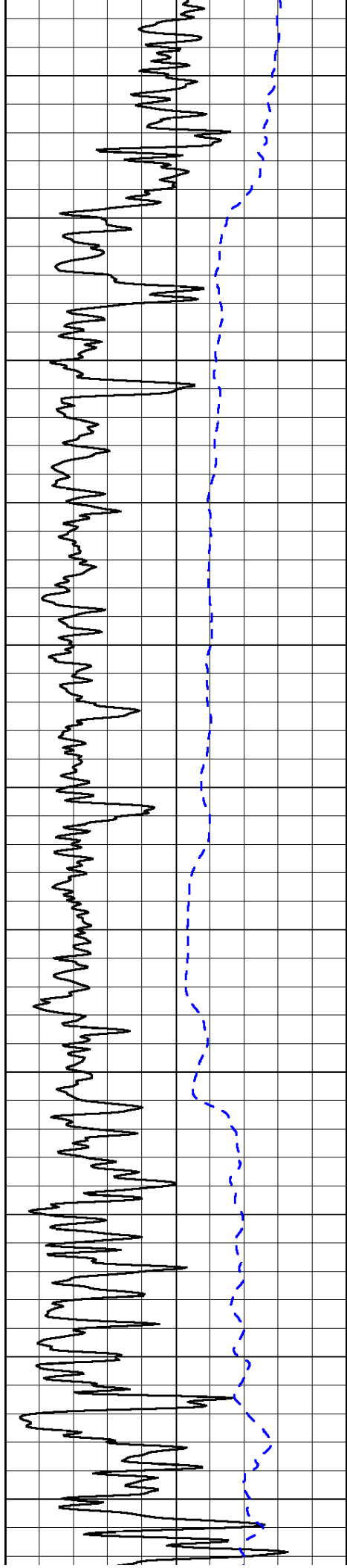
Database File: c:\warrior\data\mai oil_hammeke 'b' #3\maihd.db
Dataset Pathname: dil\maistk
Presentation Format: dil2in
Dataset Creation: Sun Oct 19 23:05:51 2014
Charted by: Depth in Feet scaled 1:600

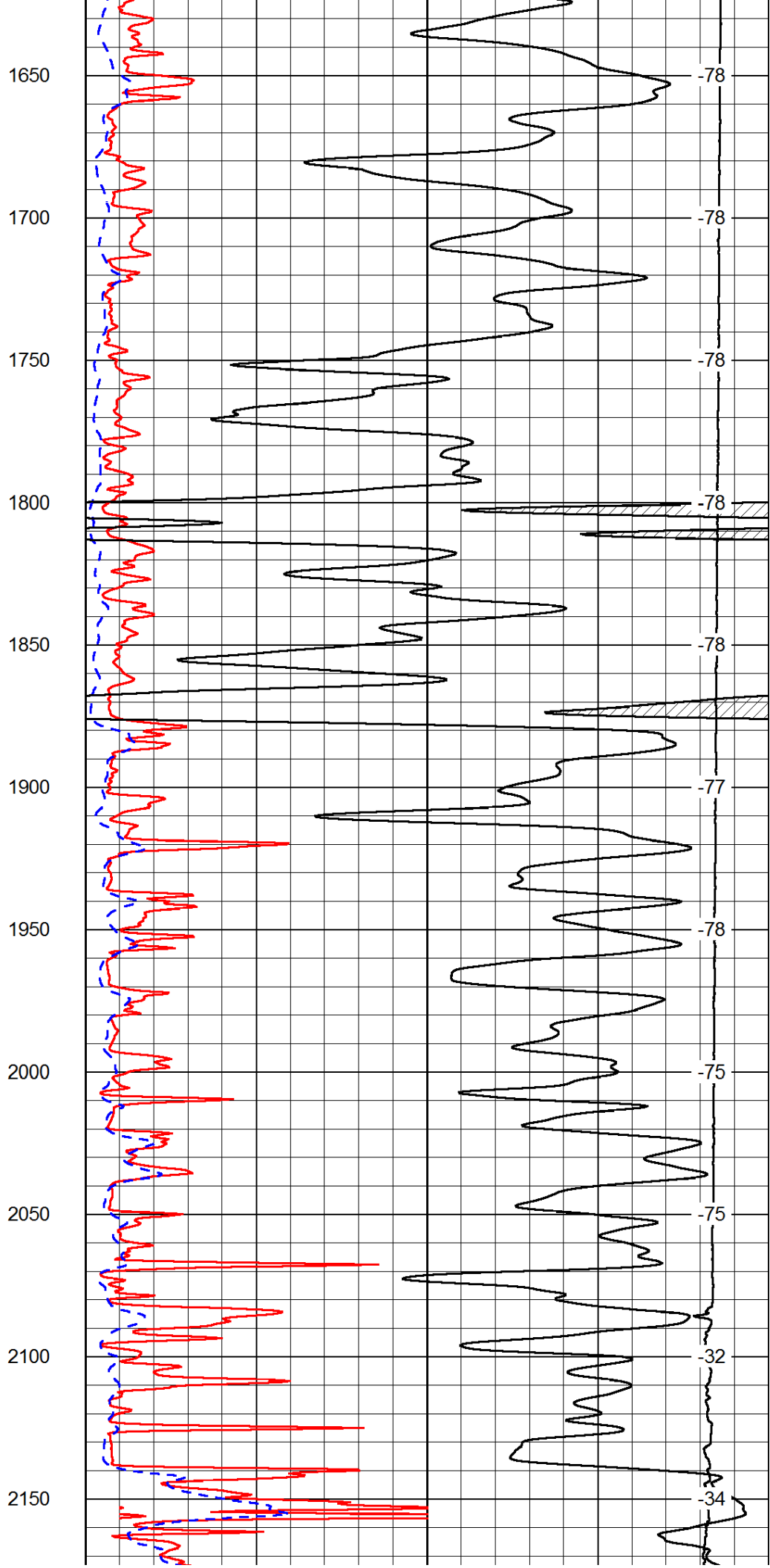
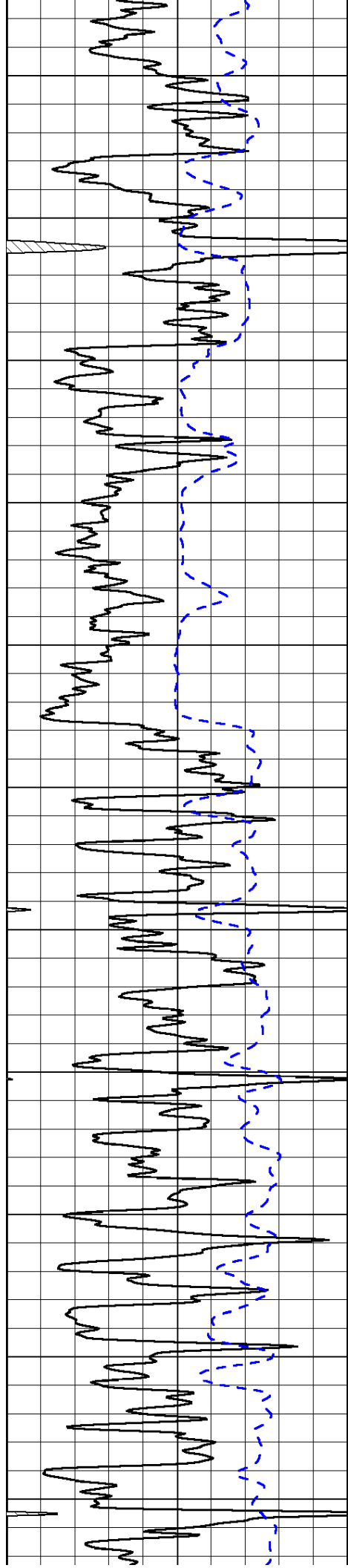
0	Gamma Ray	150
-200	SP (mV)	0

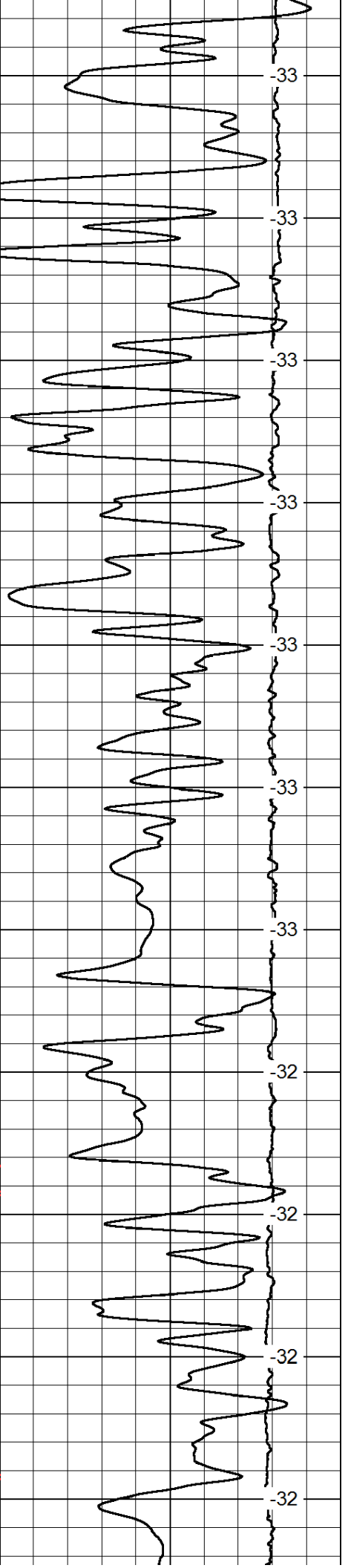
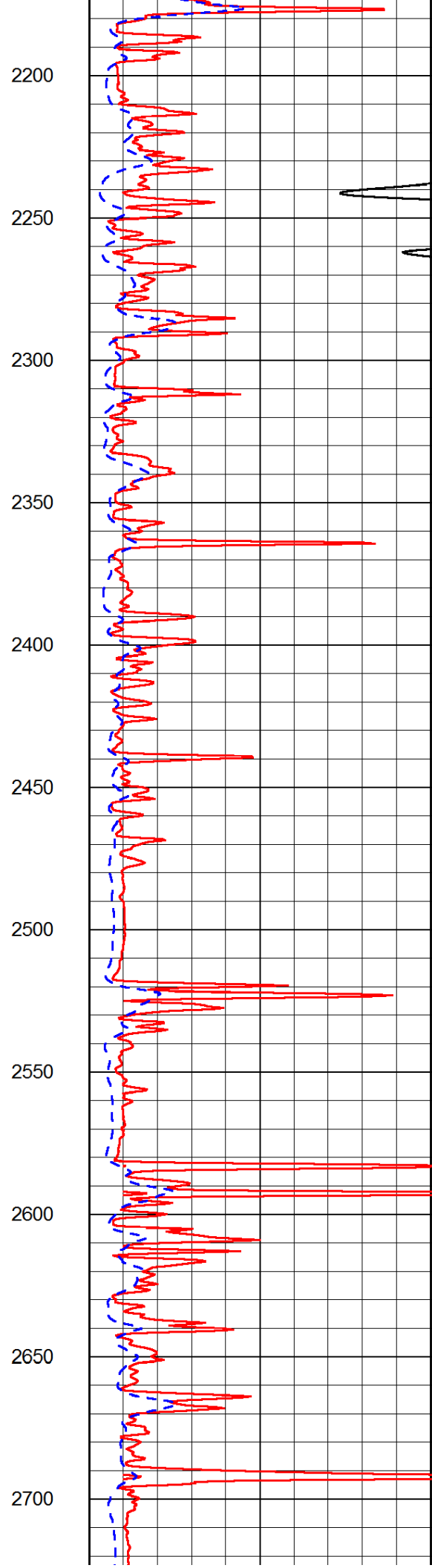
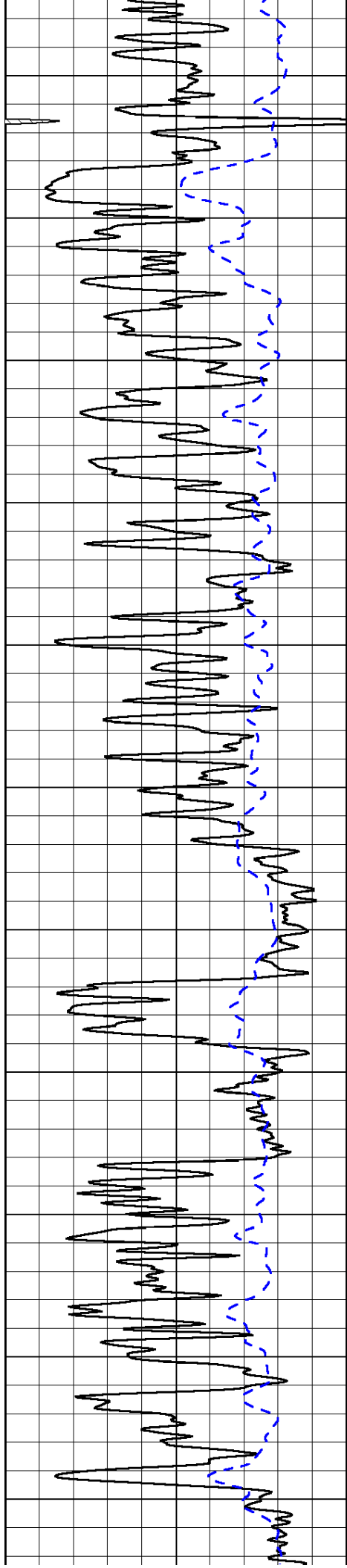
0	Shallow Resistivity	50
0	Deep Resistivity	50
1000	Conductivity	0
15000	Line Tension	0
50	Shallow Resistivity	500
50	Deep Resistivity	500

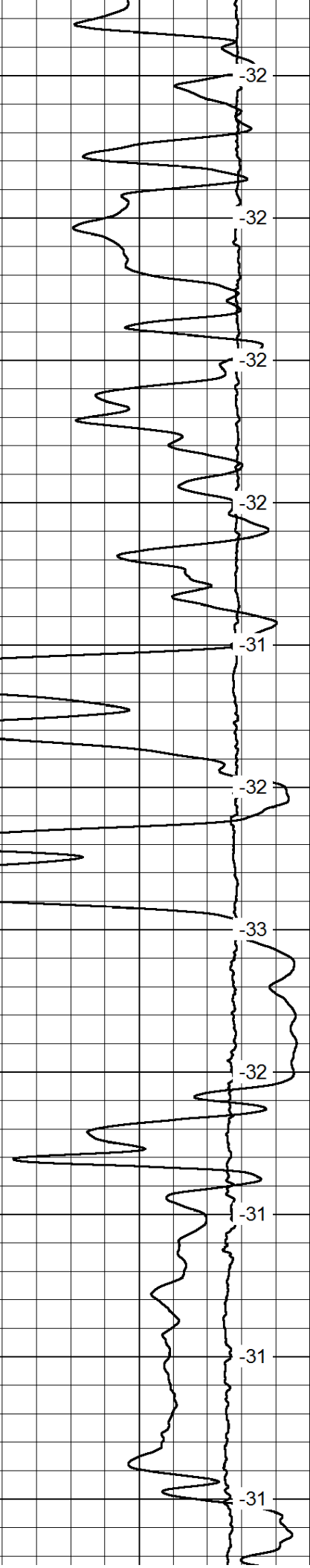
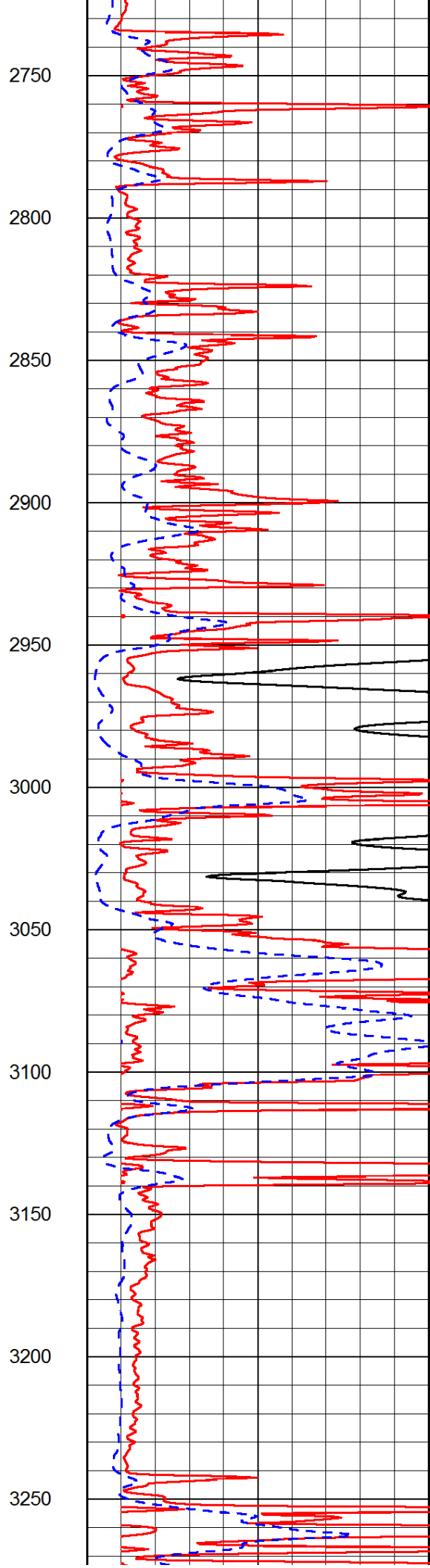
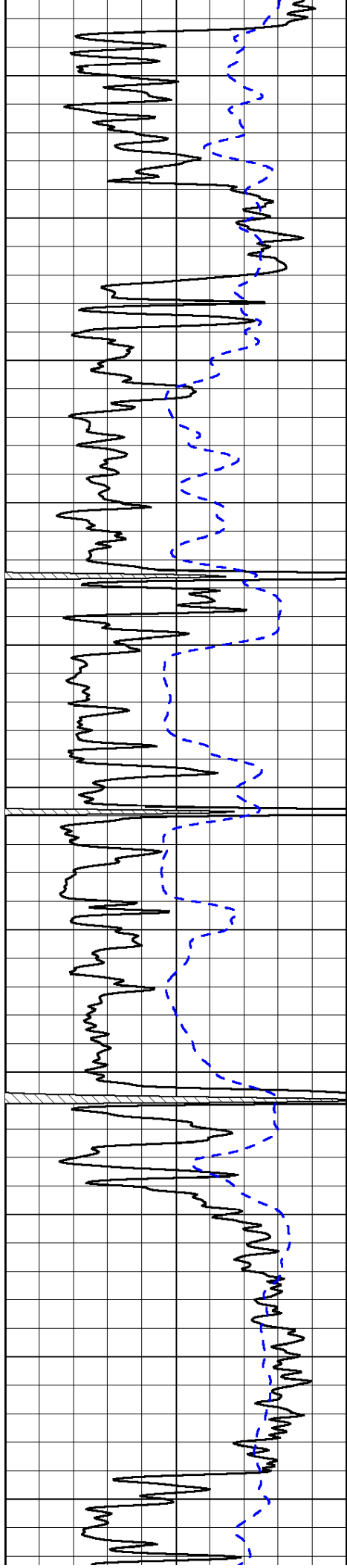
LSPD

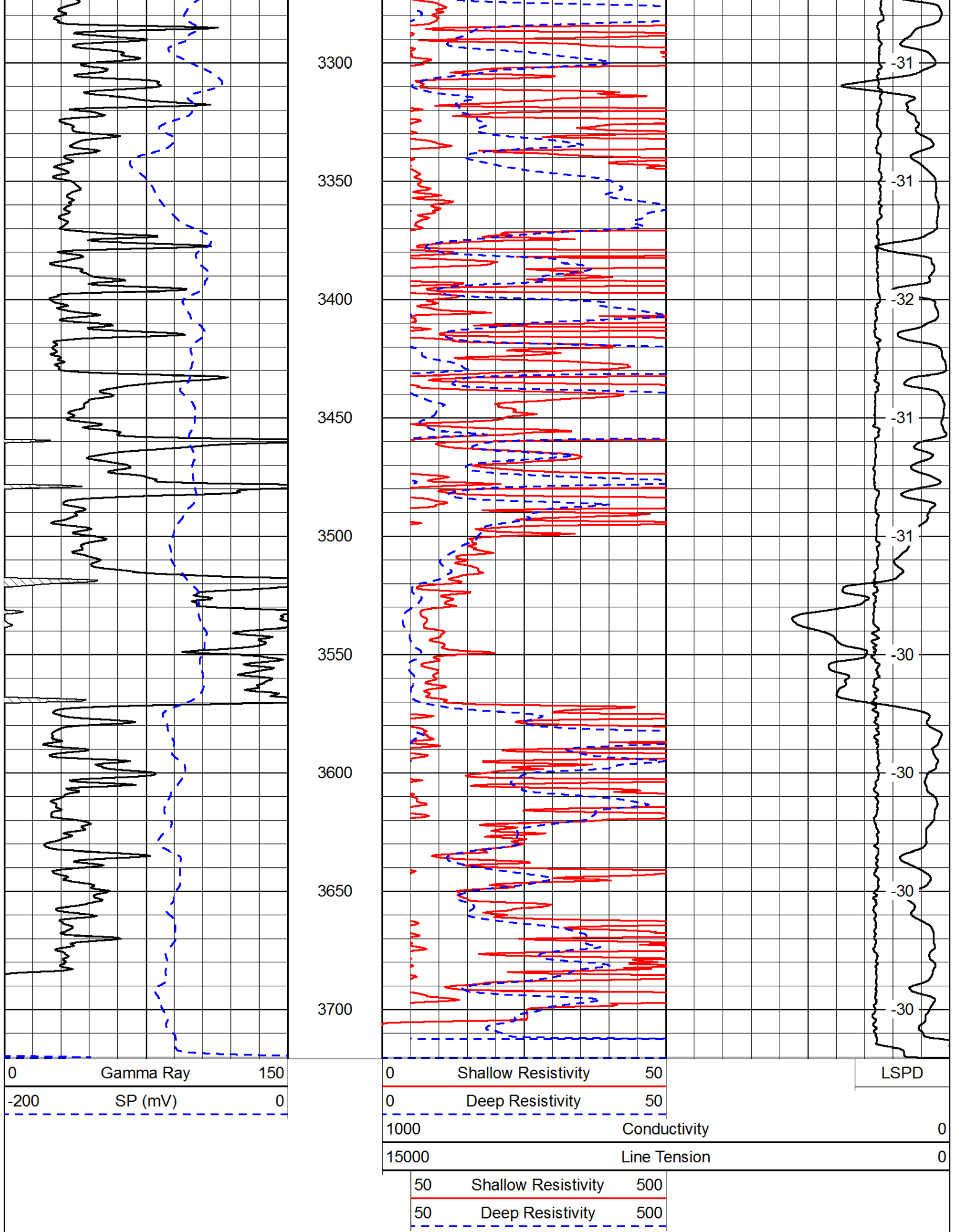










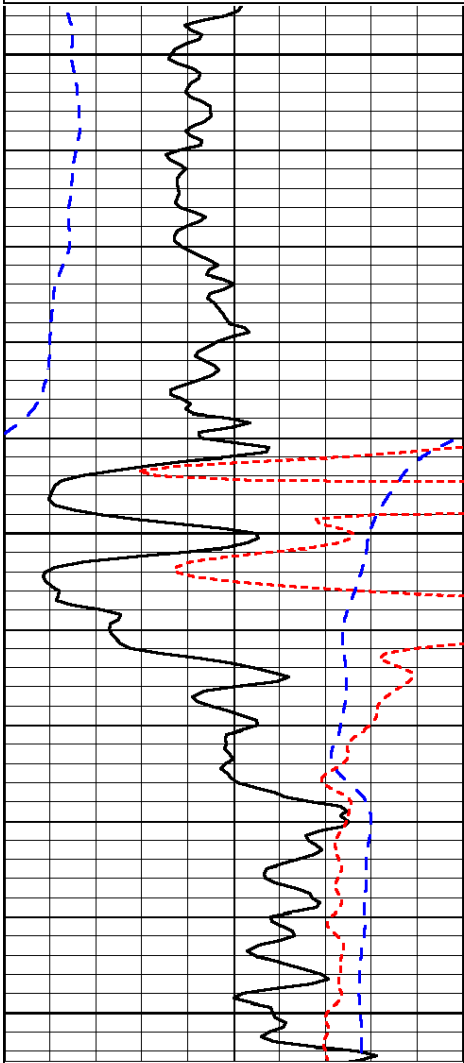


Dataset Pathname: dil/maistk
 Presentation Format: dil
 Dataset Creation: Sun Oct 19 23:05:51 2014
 Charted by: Depth in Feet scaled 1:240

0	Gamma Ray	150
-200	SP (mV)	0
-160	RxoRt	40

0.2	Deep Resistivity	2000
0.2	Medium Resistivity	2000
0.2	Shallow Resistivity	2000
15000	Line Tension	0

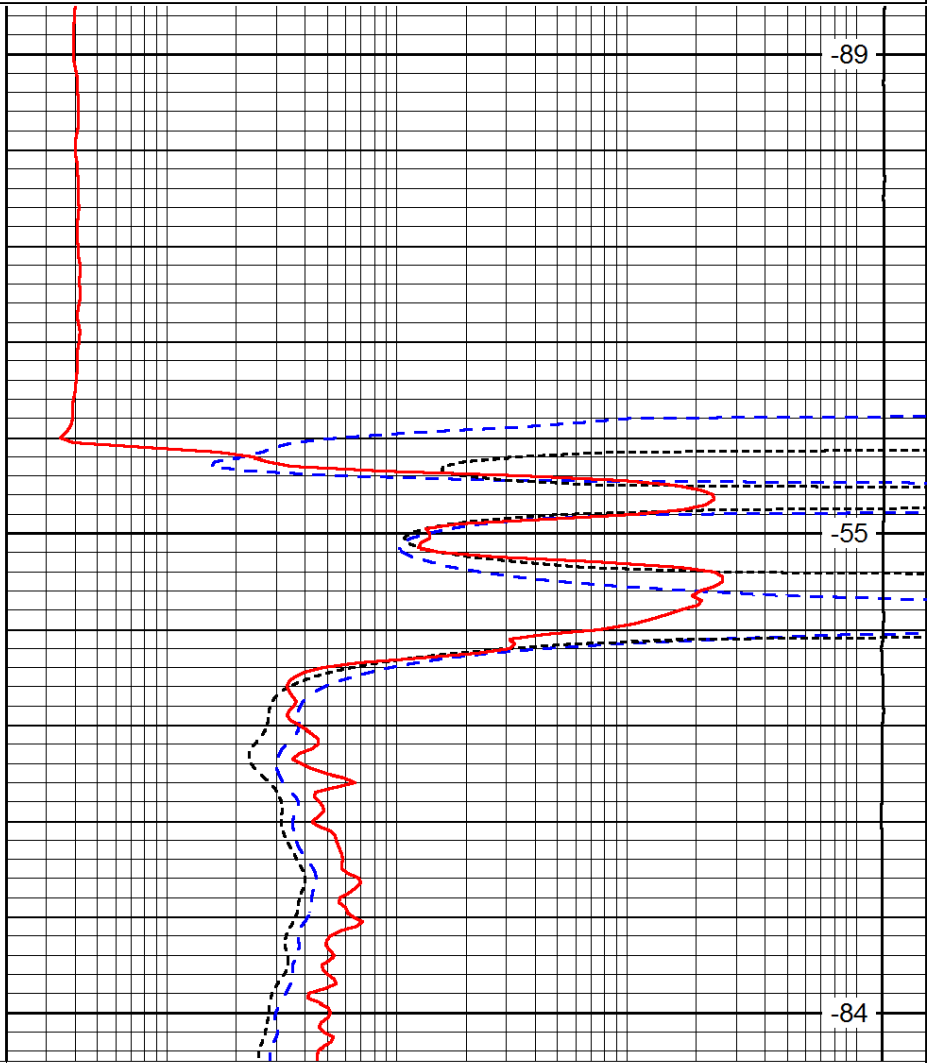
LSPD



600

650

700



-89

-55

-84

0	Gamma Ray	150
-200	SP (mV)	0
-160	RxoRt	40

0.2	Deep Resistivity	2000
0.2	Medium Resistivity	2000
0.2	Shallow Resistivity	2000
15000	Line Tension	0

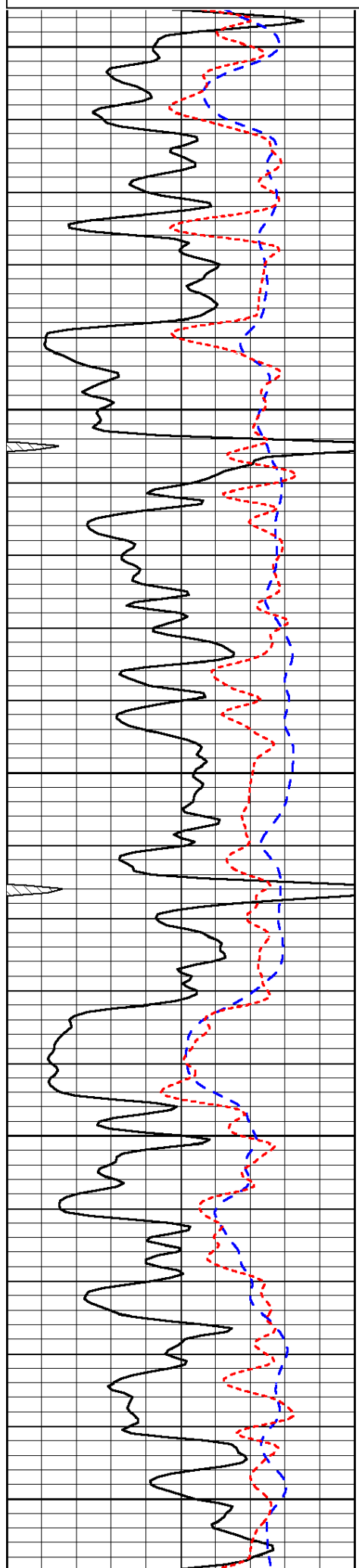
LSPD

Database File: c:\warrior\data\mai oil_hammeke 'b' #3\maihd.db
 Dataset Pathname: dil/maistk
 Presentation Format: dil
 Dataset Creation: Sun Oct 19 23:05:51 2014
 Charted by: Depth in Feet scaled 1:240

0	Gamma Ray	150
-200	SP (mV)	0
-160	RxoRt	40

0.2	Deep Resistivity	2000
0.2	Medium Resistivity	2000
0.2	Shallow Resistivity	2000
15000	Line Tension	0

LSPD



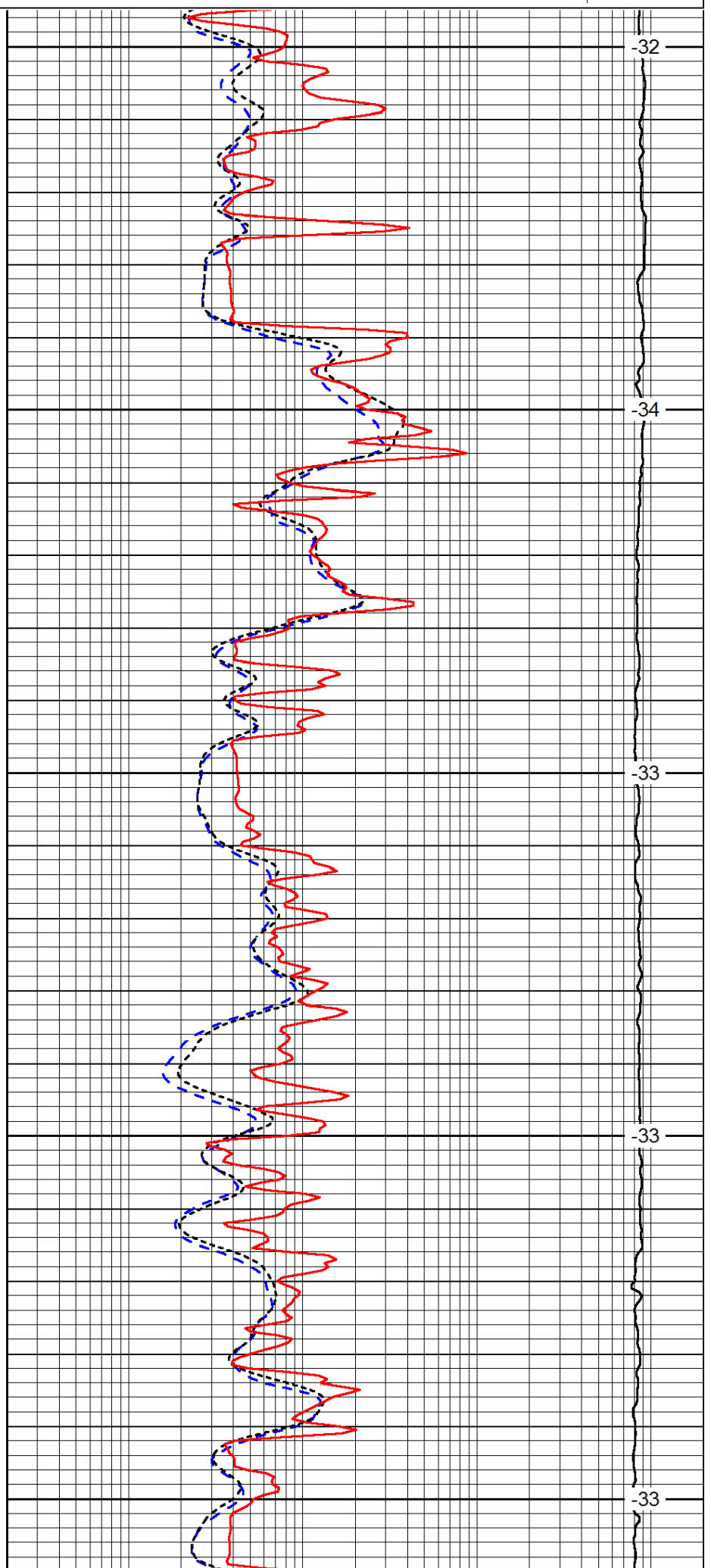
2100

2150

2200

2250

2300



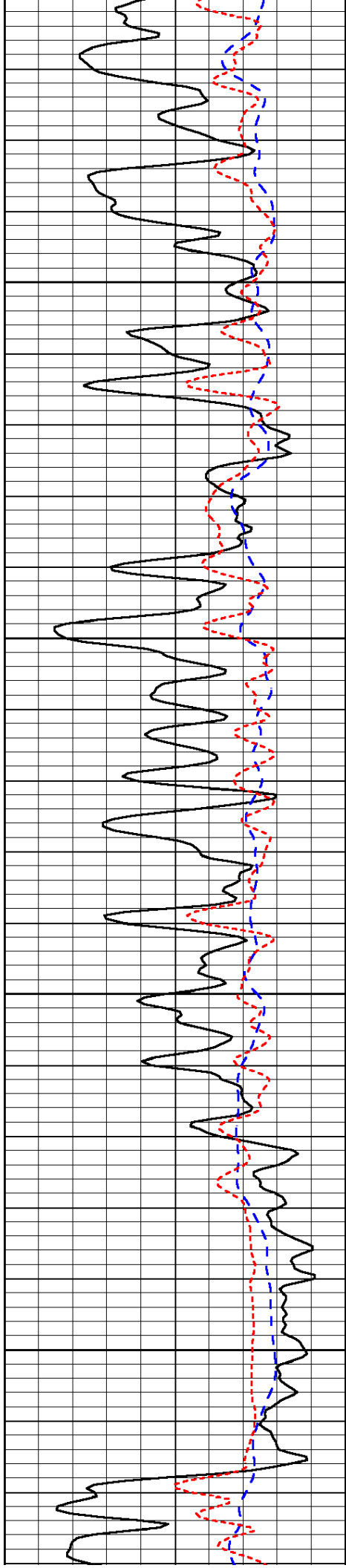
-32

-34

-33

-33

-33

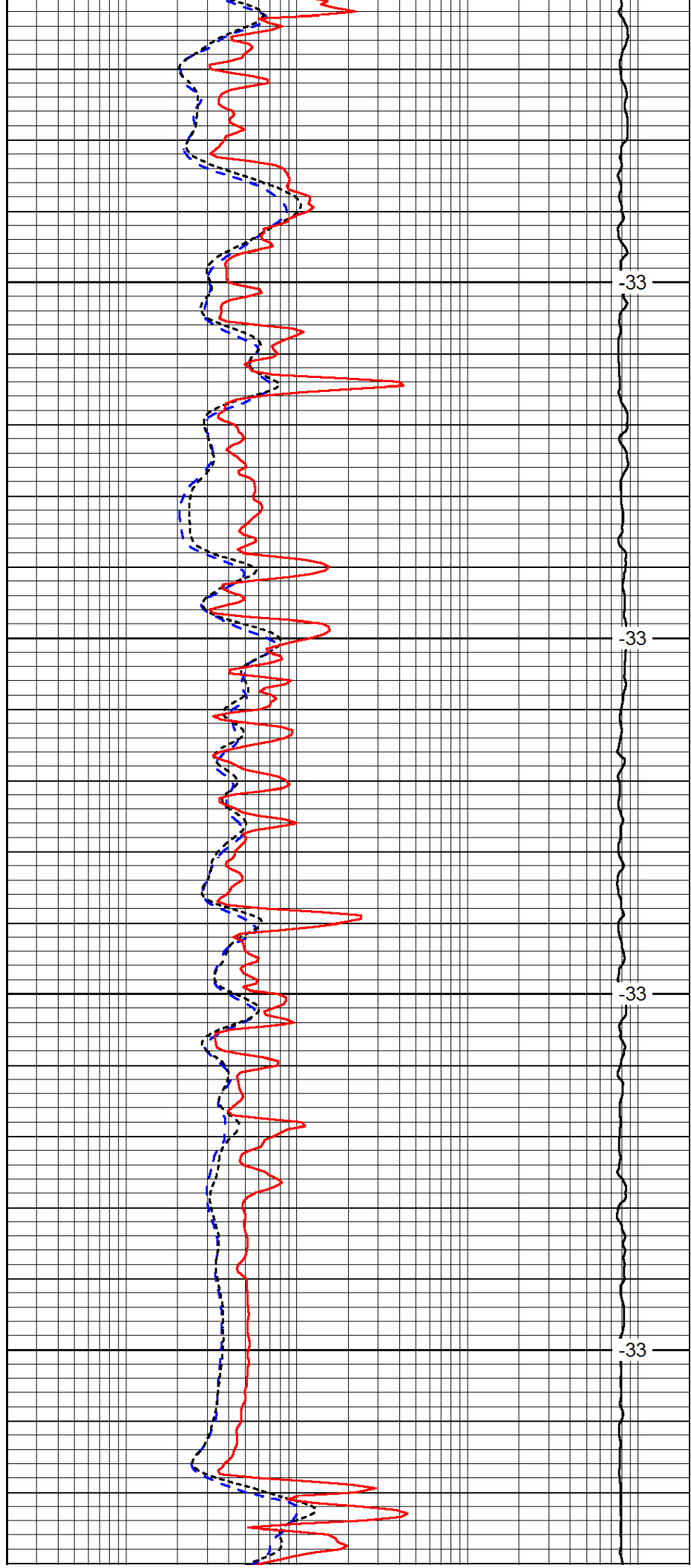


2350

2400

2450

2500

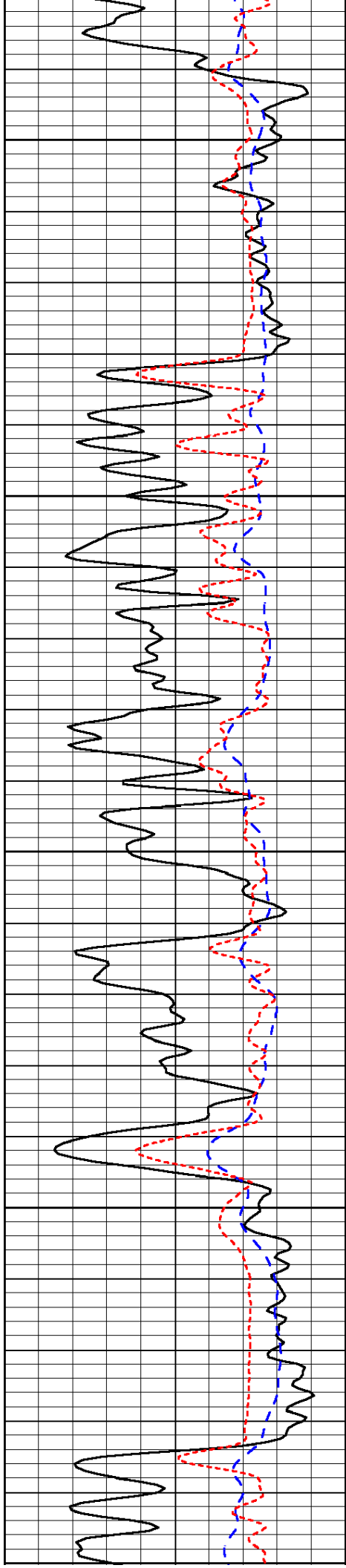


-33

-33

-33

-33



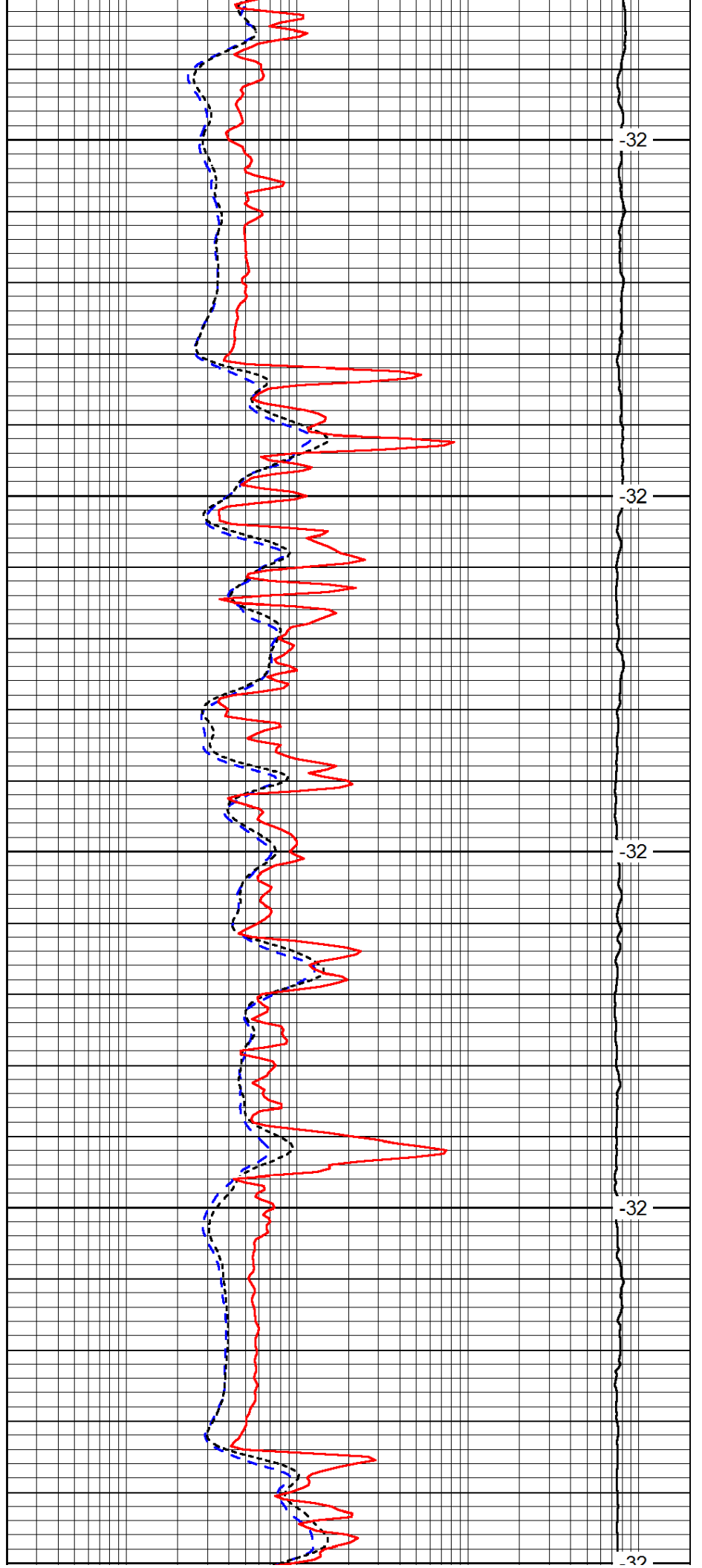
2550

2600

2650

2700

2750



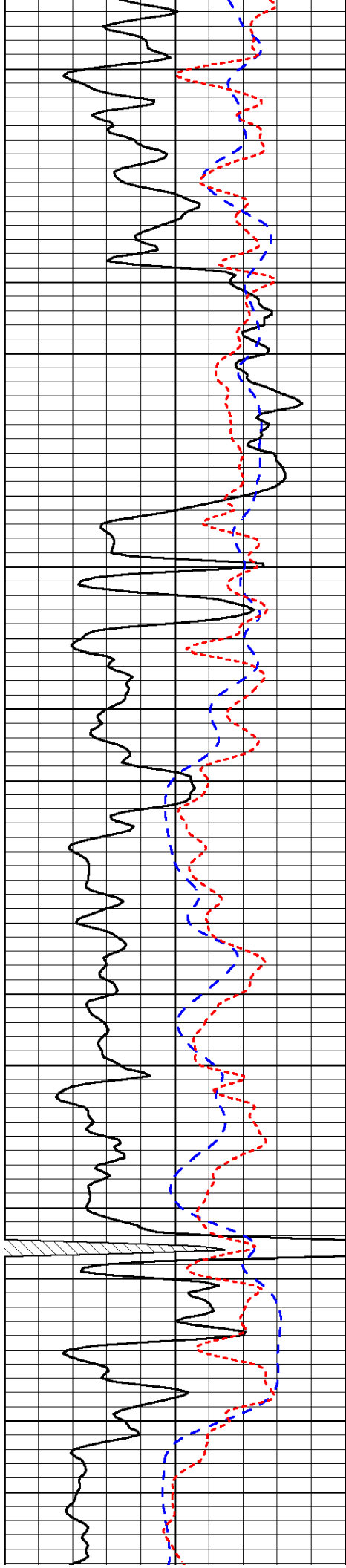
-32

-32

-32

-32

-32



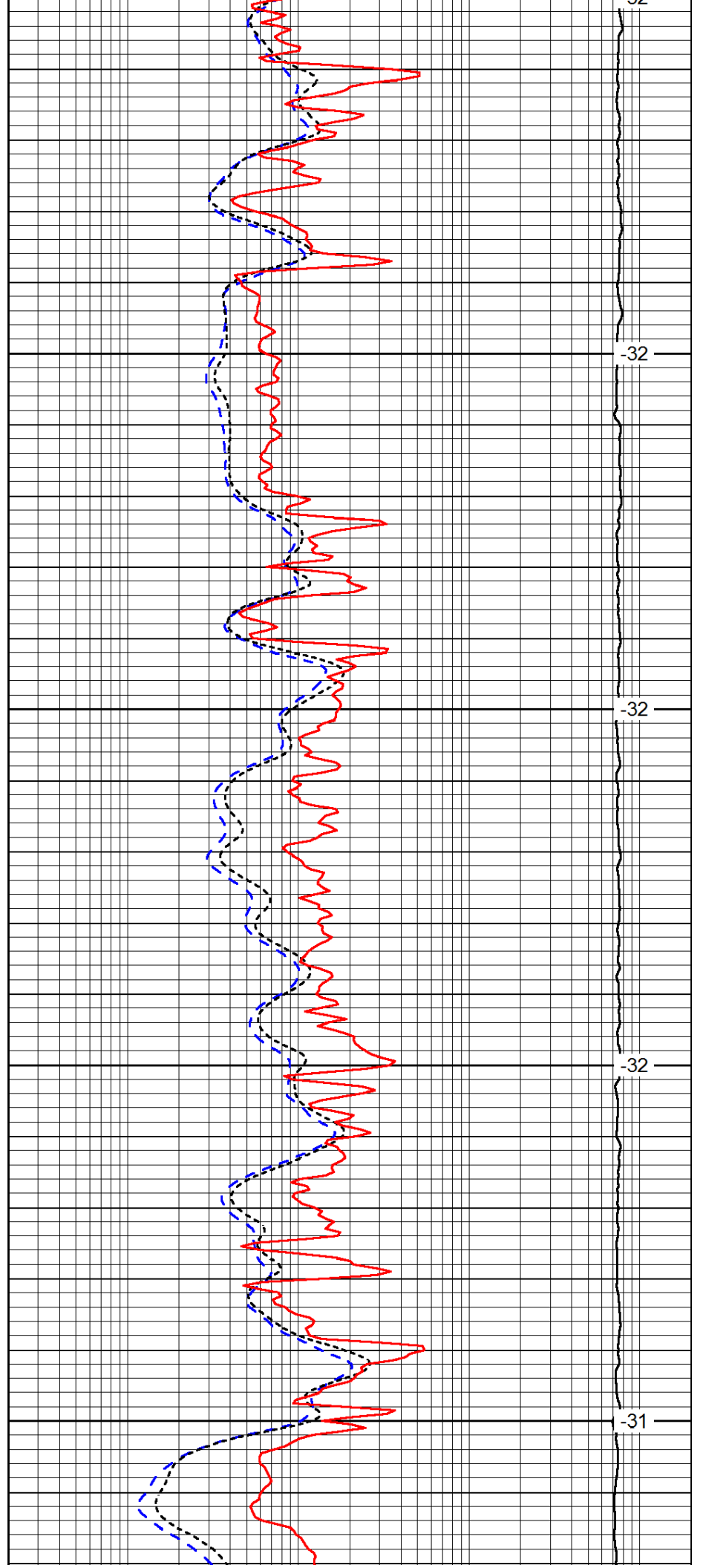
2750

2800

2850

2900

2950

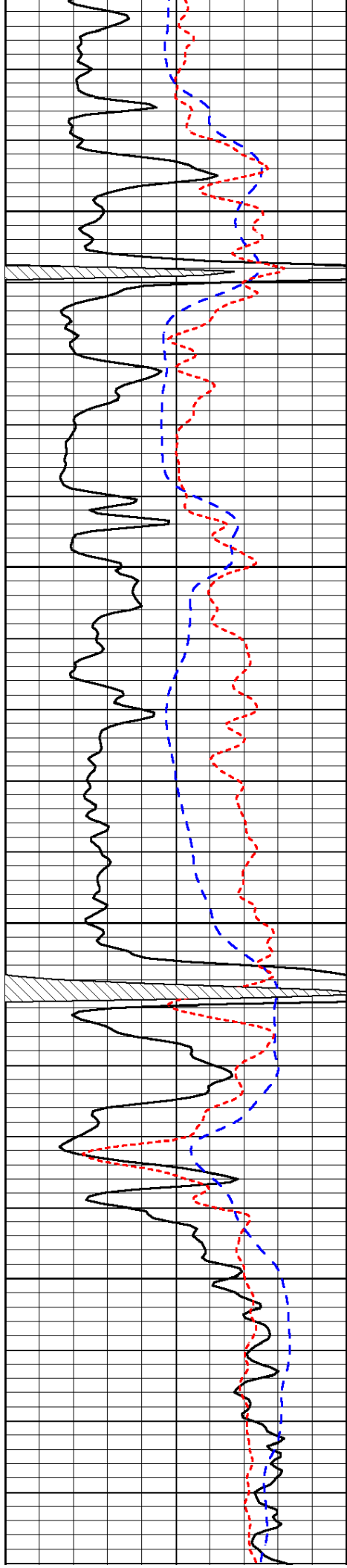


32

32

32

31

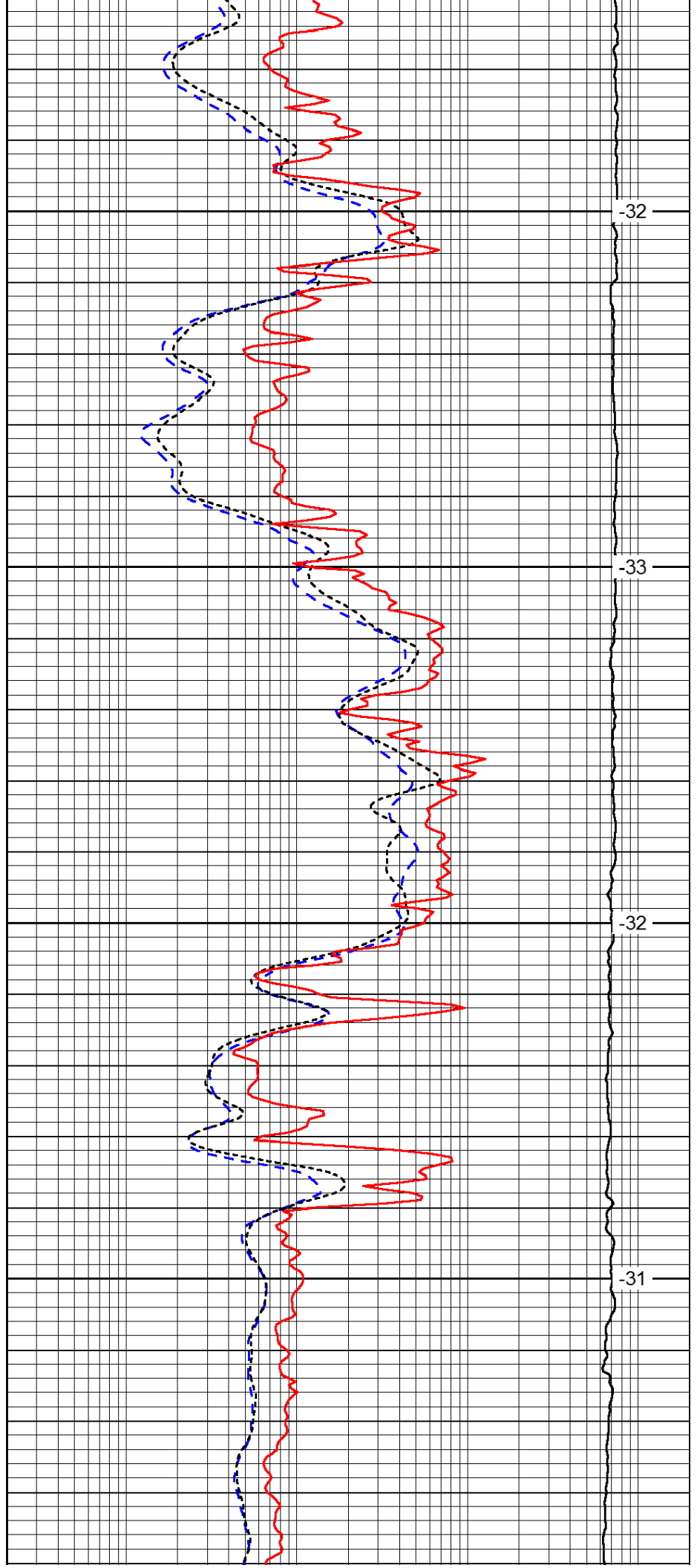


3000

3050

3100

3150

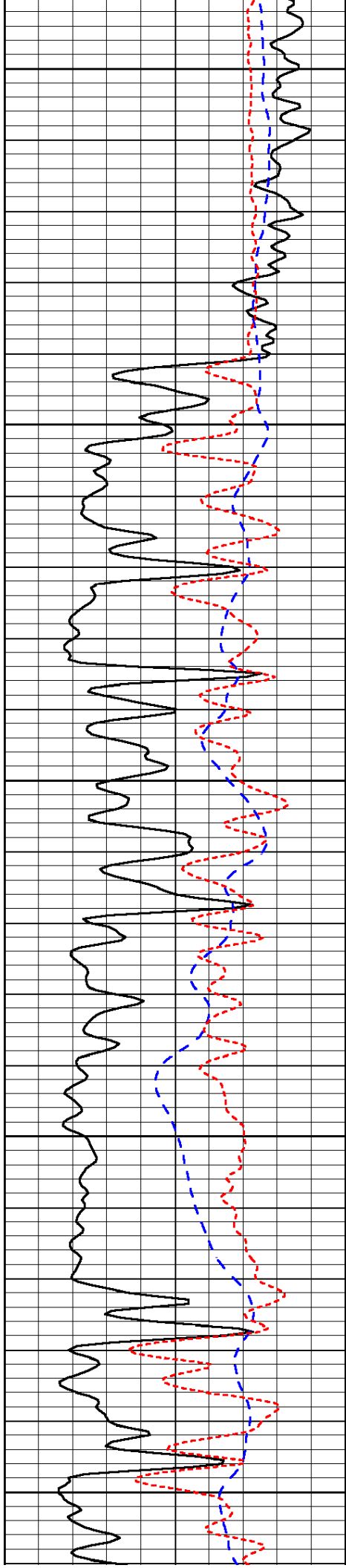


-32

-33

-32

-31



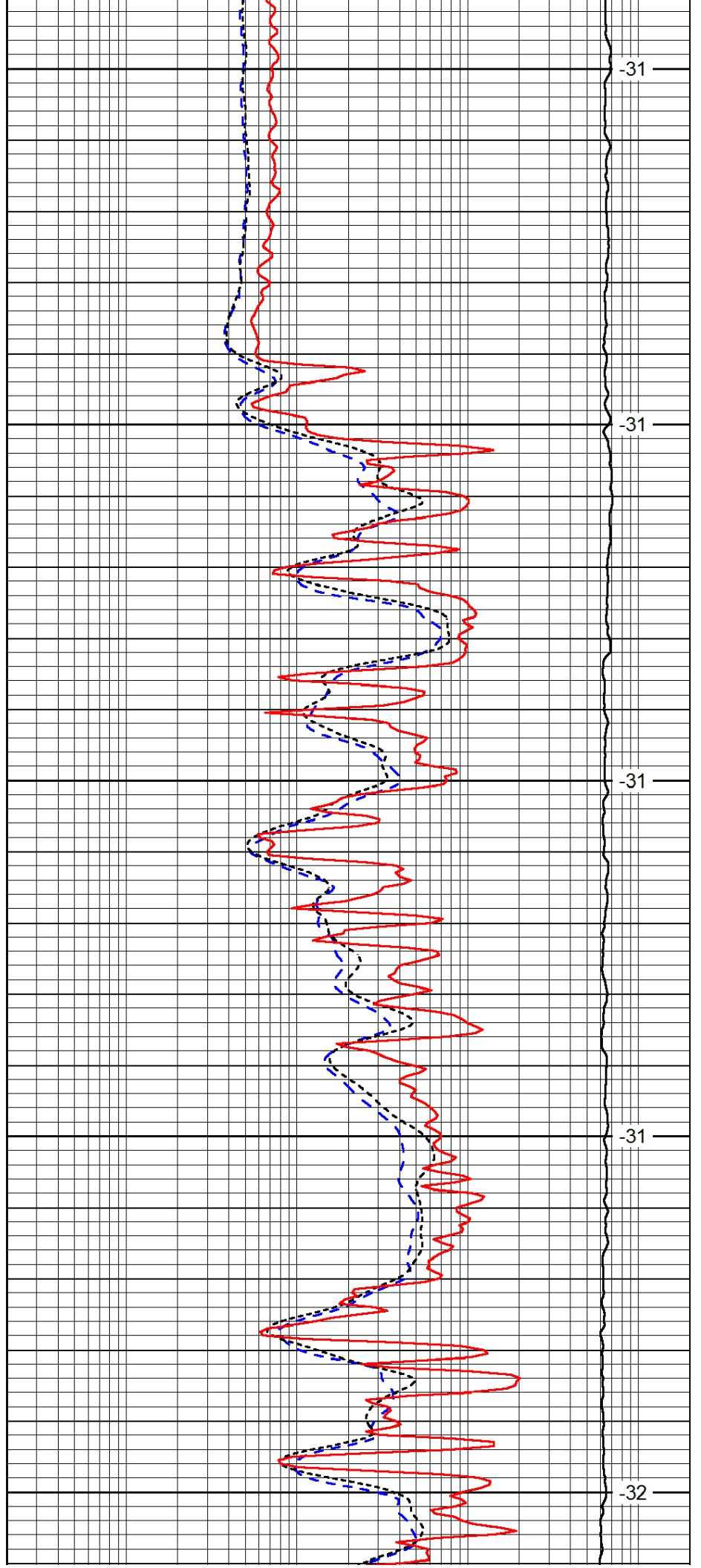
3200

3250

3300

3350

3400



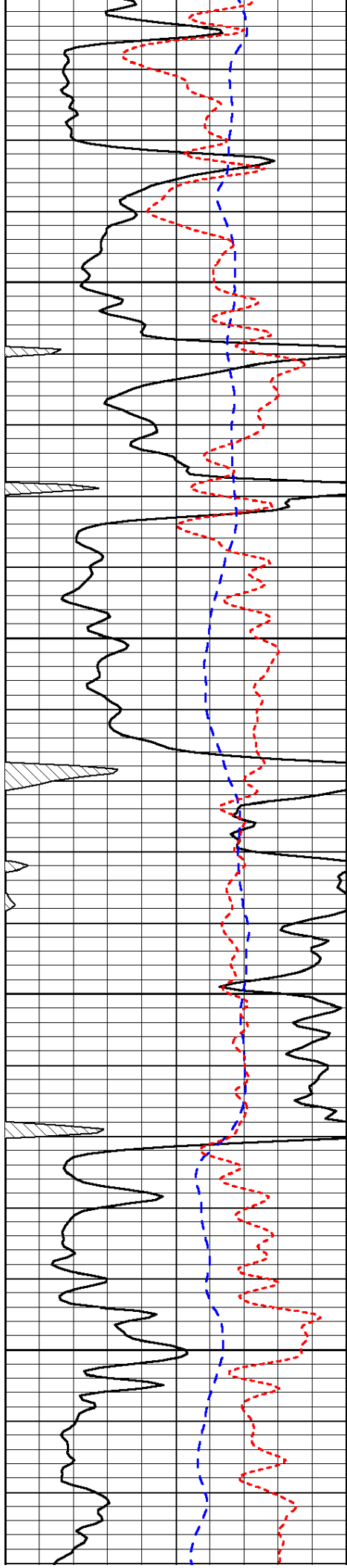
-31

-31

-31

-31

-32

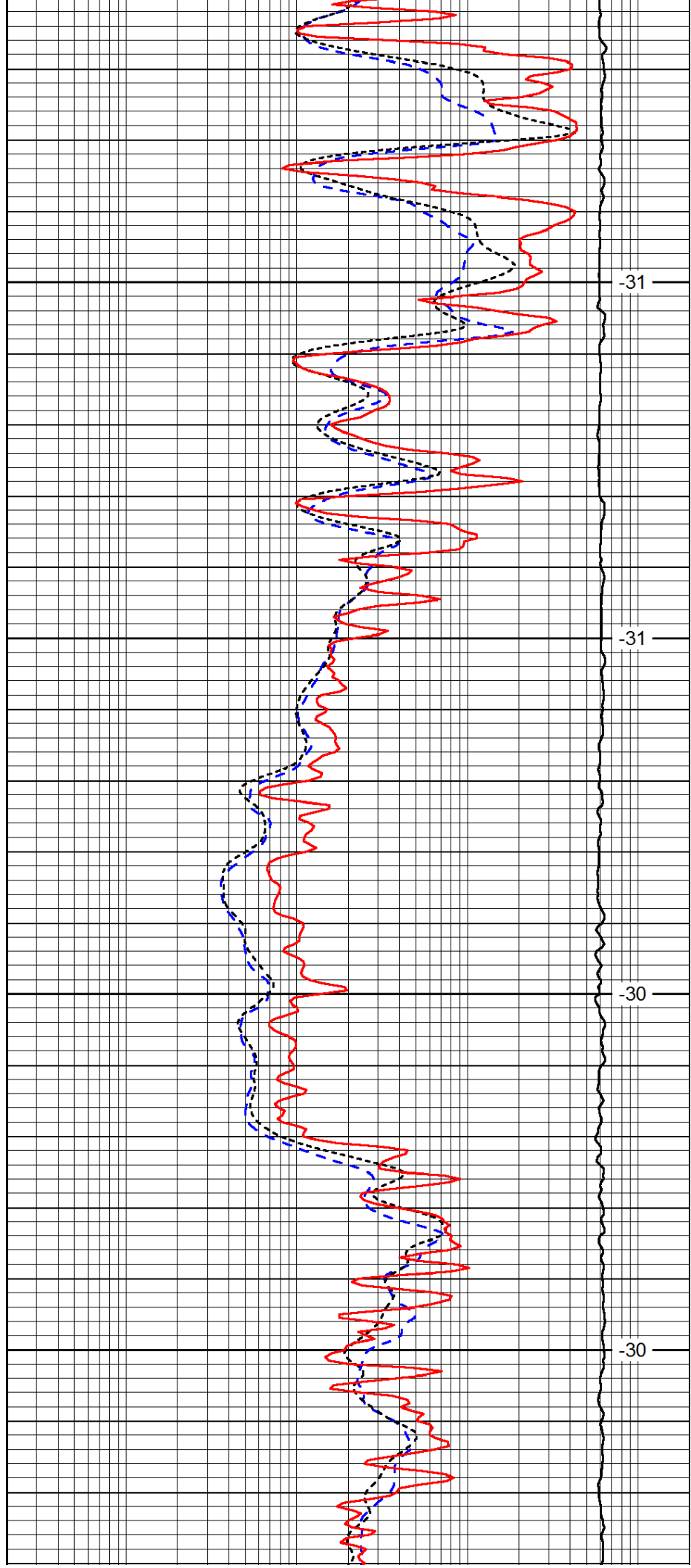


3450

3500

3550

3600

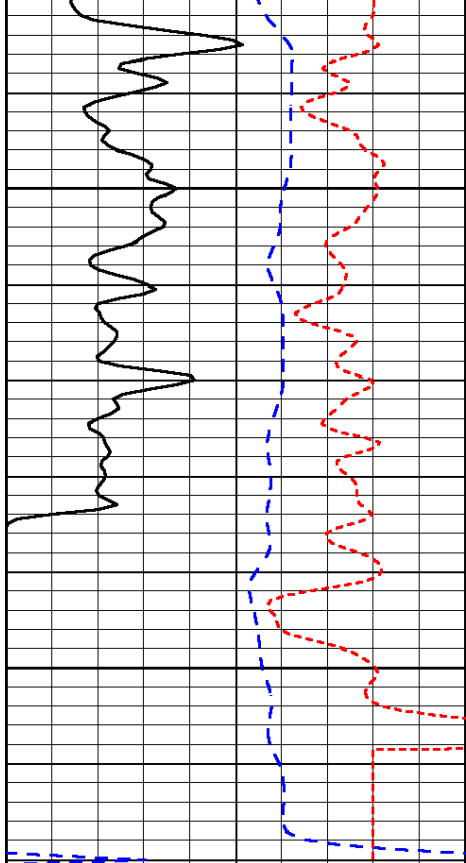


-31

-31

-30

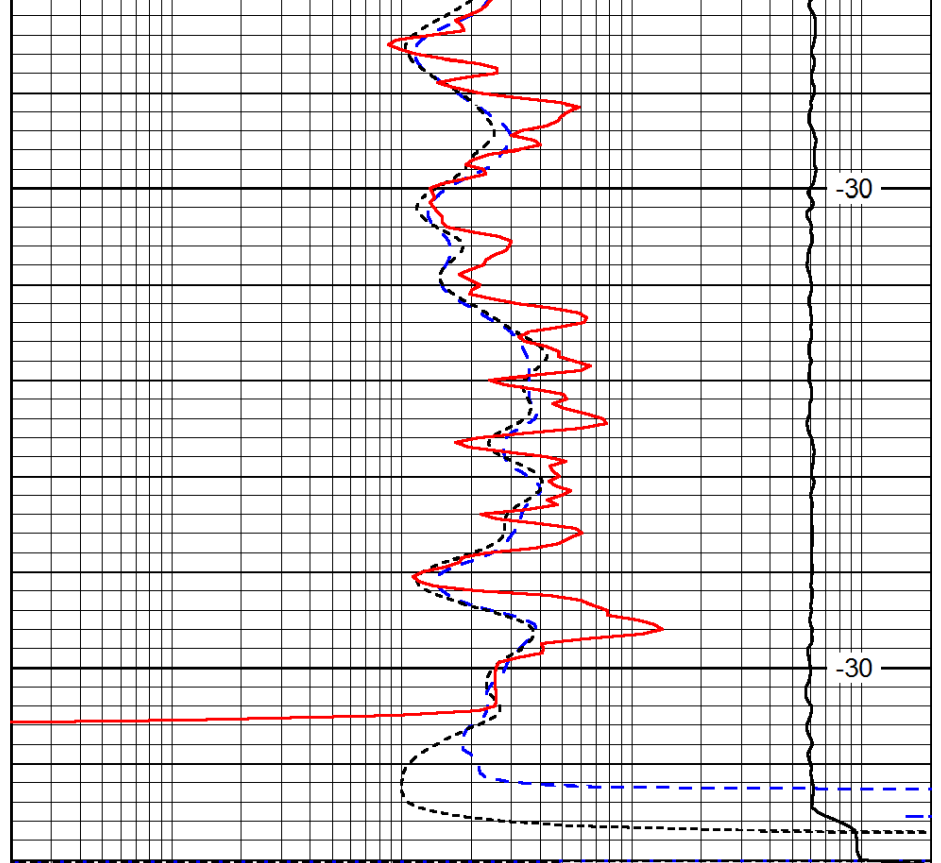
-30



0	Gamma Ray	150
-200	SP (mV)	0
-160	RxoRt	40

3650

3700



-30

-30

0.2	Deep Resistivity	2000
0.2	Medium Resistivity	2000
0.2	Shallow Resistivity	2000
15000	Line Tension	0

LSPD