



Pioneer Energy Services

# Radiation Guard Log

15-153-21,052-00-00

API No.	Company <b>King Production Services, Inc.</b>		Other Services MEL
	Well <b>Vernice #15-5</b>		
	Field <b>Bernos North</b>	County <b>Rawlins</b> State <b>Kansas</b>	
	Location <b>W2-SW-SE-SE 330' FSL &amp; 1280' FEL</b>	Sec: <b>5</b> Twp: <b>1S</b> Rge: <b>36W</b>	Elevation K.B. 3057 D.F. 3046 G.L. 3046
Permanent Datum	Ground Level	Elevation 3046	
Log Measured From	Kelly Bushing	11 Ft. Above Perm. Datum	
Drilling Measured From	Kelly Bushing		

Date	10/6/2014
Run Number	One
Depth Driller	4300
Depth Logger	4170
Bottom Logged Interval	4169
Top Log Interval	350
Casing Driller	8.625 @ 355
Casing Logger	350
Bit Size	7.875
Type Fluid in Hole	Chemical
Salinity, ppm CL	900
Density / Viscosity	9.2 47
pH / Fluid Loss	10.5 7.2
Source of Sample	Flowline
Rm @ Meas. Temp	.59 @ 54
Rmf @ Meas. Temp	.44 @ 54
Rmc @ Meas. Temp	.80 @ 54
Source of Rmf / Rmc	Charts
Rm @ BHT	.26 @ 121
Operating Rig Time	3 1/2 Hours
Max Rec. Temp. F	121
Equipment Number	91
Location	Hays
Recorded By	J. Henrickson
Witnessed By	Robert Hopkins

<<< Fold Here >>>

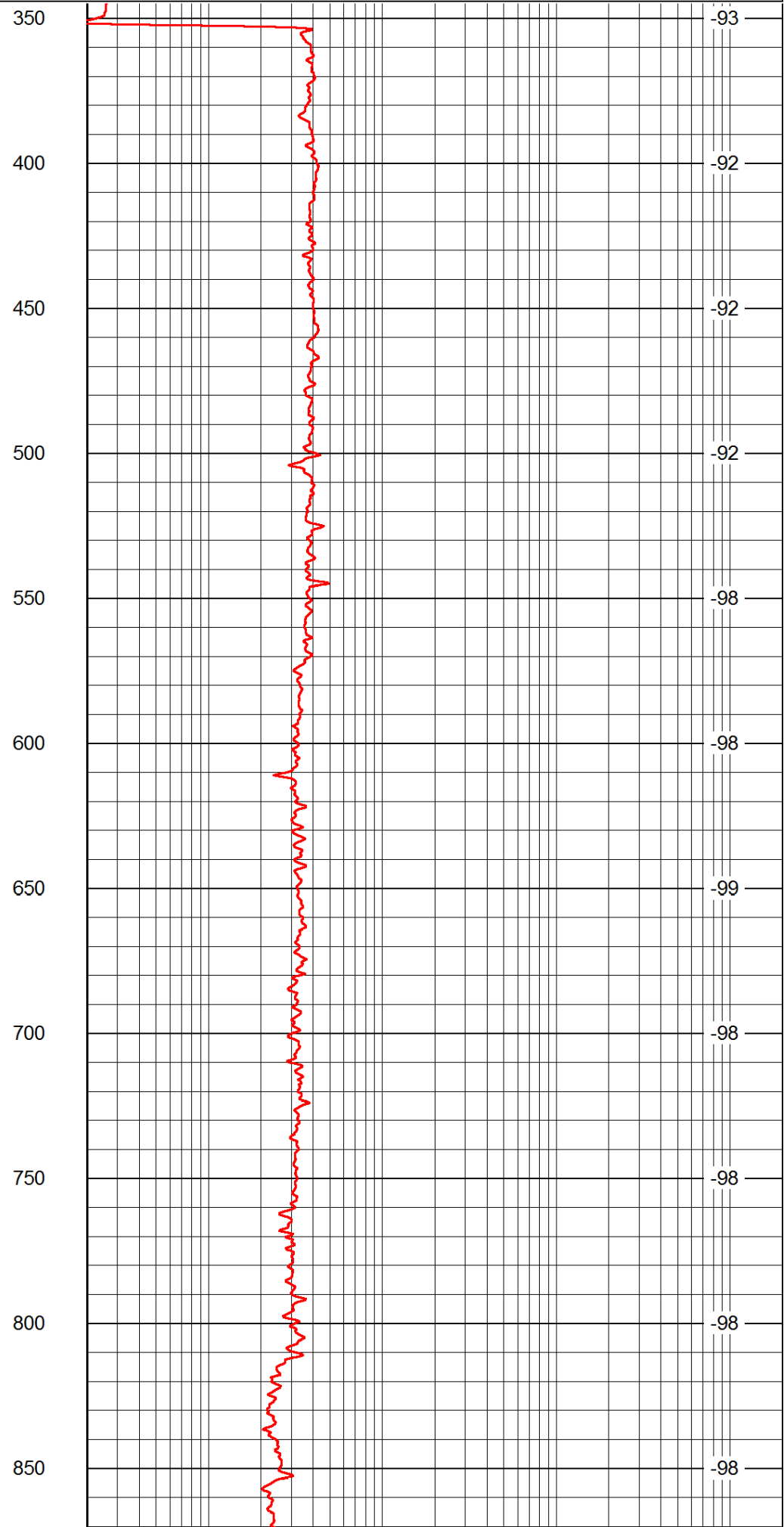
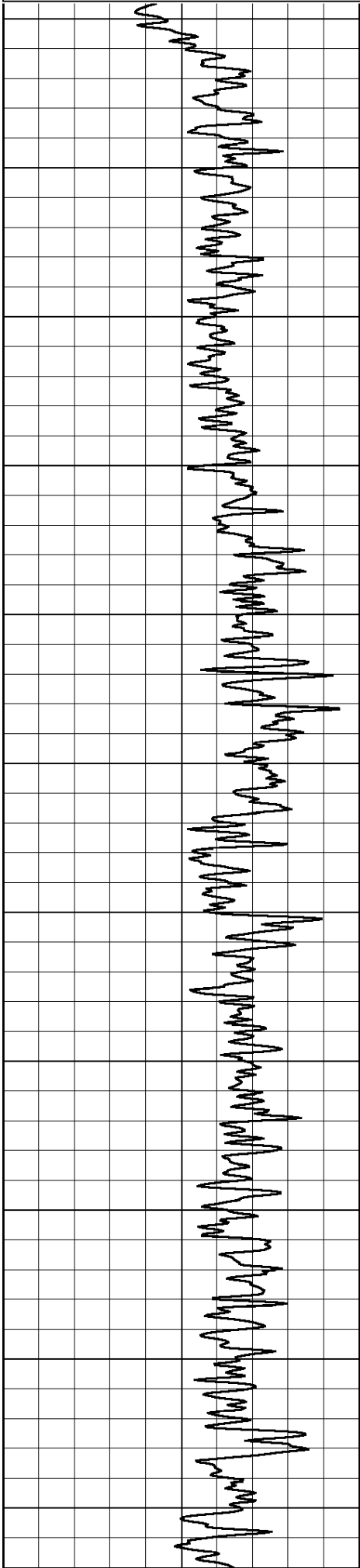
All interpretations are opinions based on inferences from electrical or other measurements and we cannot and do not guarantee the accuracy or correctness of any interpretation, and we shall not, except in the case of gross or willful negligence on our part, be liable or responsible for any loss, costs, damages, or expenses incurred or sustained by anyone resulting from any interpretation made by any of our officers, agents or employees. These interpretations are also subject to our general terms and conditions set out in our current Price Schedule.

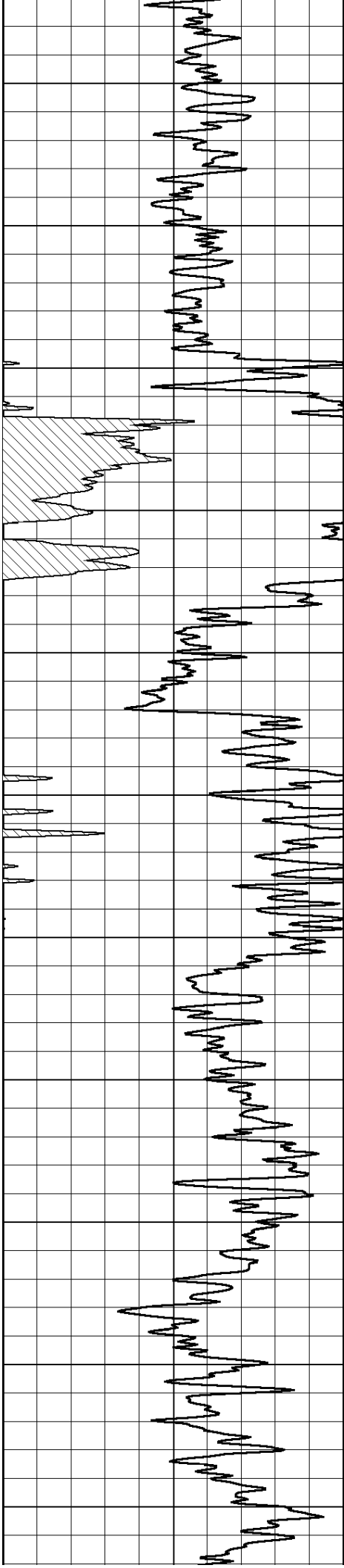
### Comments

Thank you for using Pioneer Energy Services  
[www.pioneeres.com](http://www.pioneeres.com)  
 785 625 3858  
  
 McDonald Kansas  
 15 North, West Into

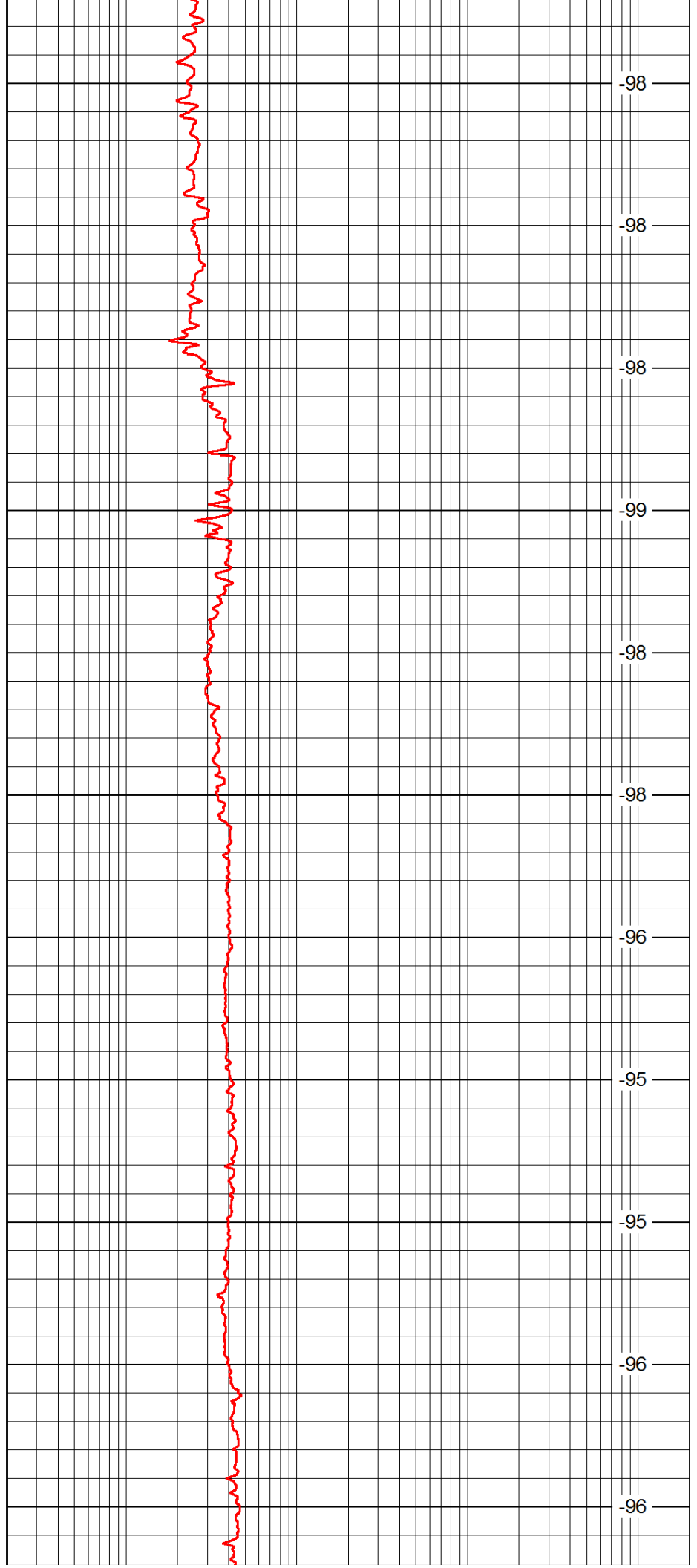
Database File: c:\warrior\data\king production\_vernice #15-5\king\_production\_vernice\_15\_5hd.db  
 Dataset Pathname: RAG/kingrag  
 Presentation Format: rag2in  
 Dataset Creation: Mon Oct 06 09:36:55 2014  
 Charted by: Depth in Feet scaled 1:600

LSPD

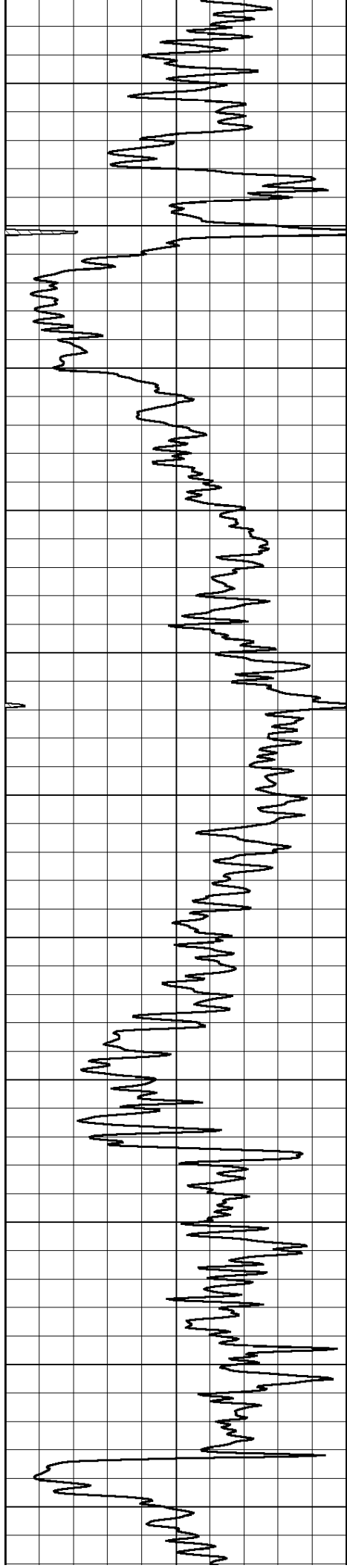




900  
950  
1000  
1050  
1100  
1150  
1200  
1250  
1300  
1350  
1400



-98  
-98  
-98  
-99  
-98  
-98  
-96  
-95  
-95  
-96  
-96



1450

1500

1550

1600

1650

1700

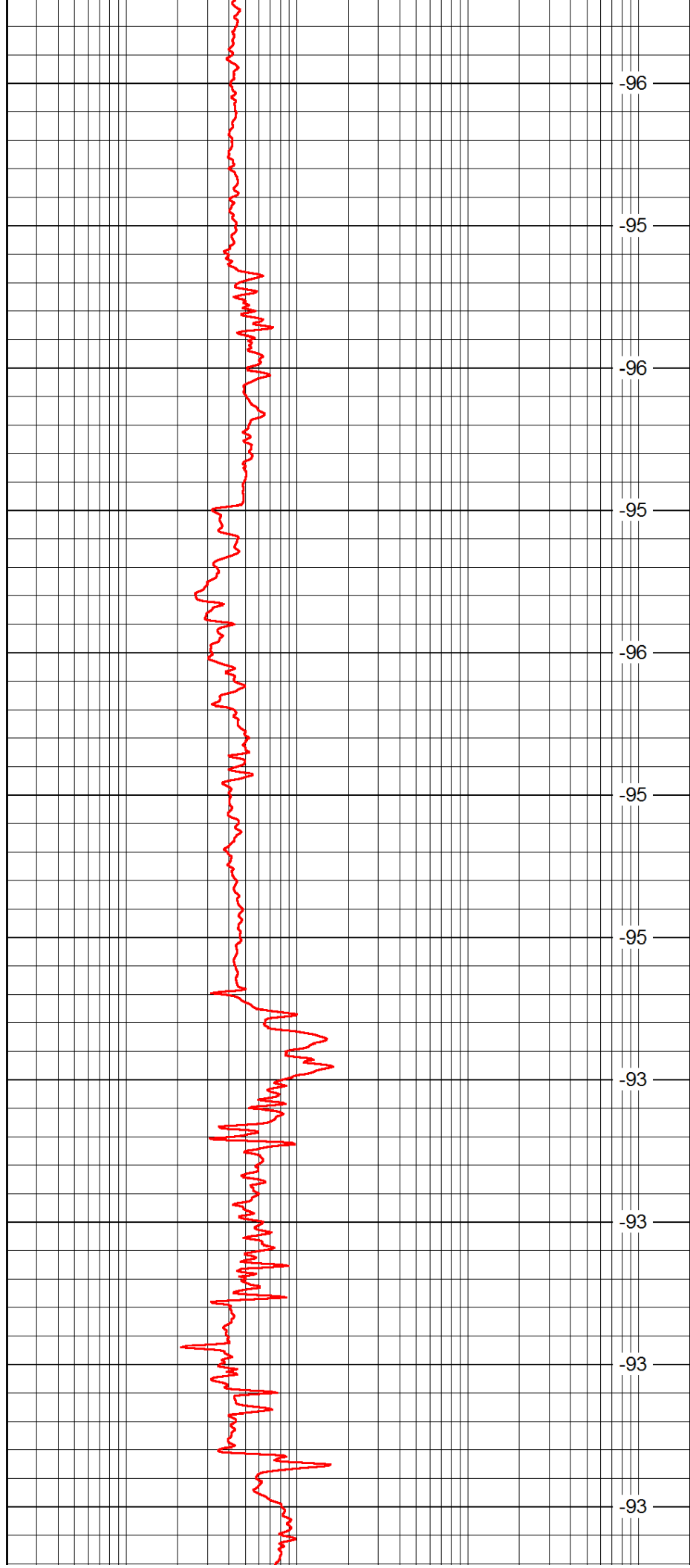
1750

1800

1850

1900

1950



-96

-95

-96

-95

-96

-95

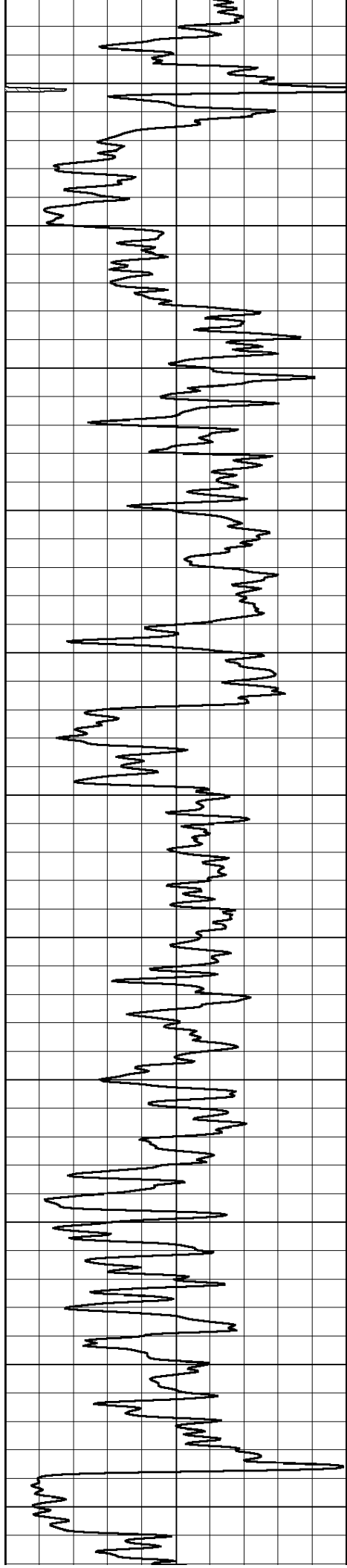
-95

-93

-93

-93

-93



2000

2050

2100

2150

2200

2250

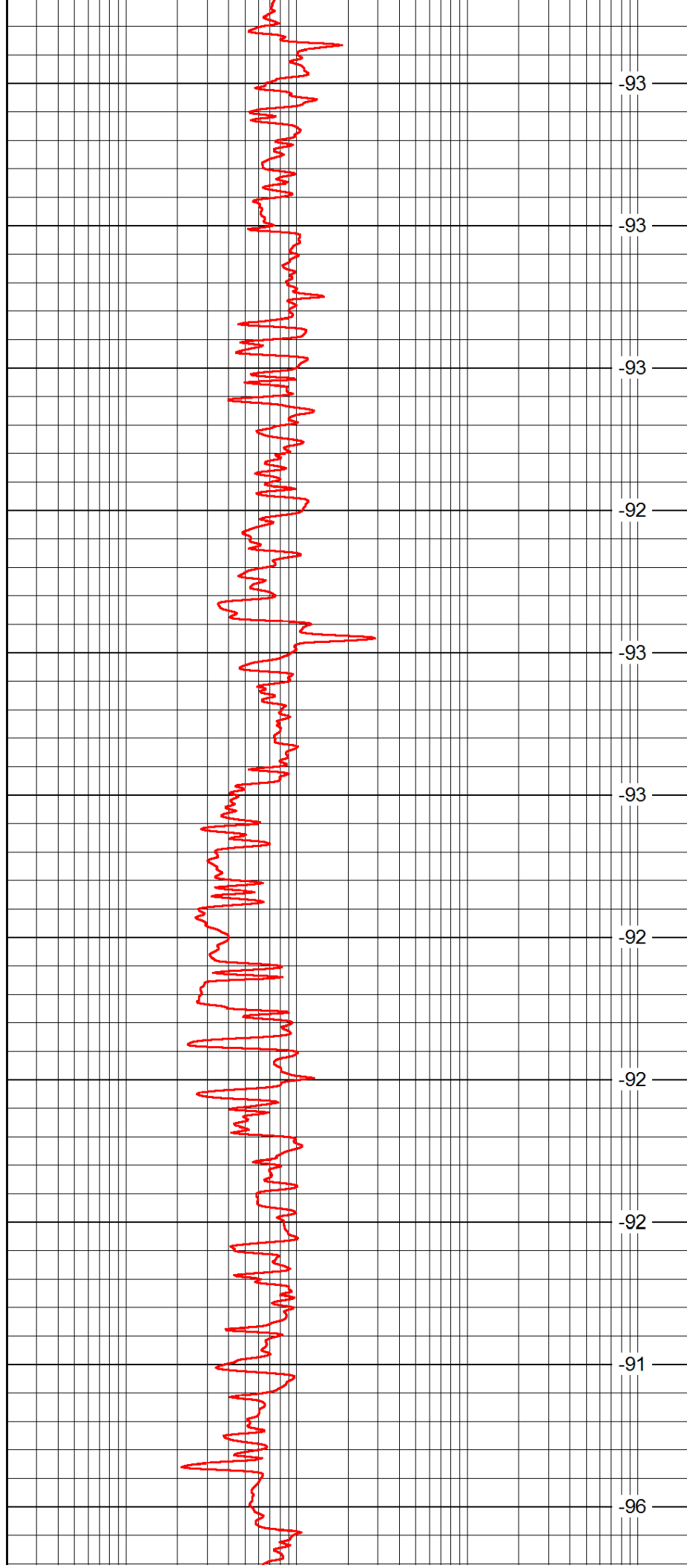
2300

2350

2400

2450

2500



-93

-93

-93

-92

-93

-93

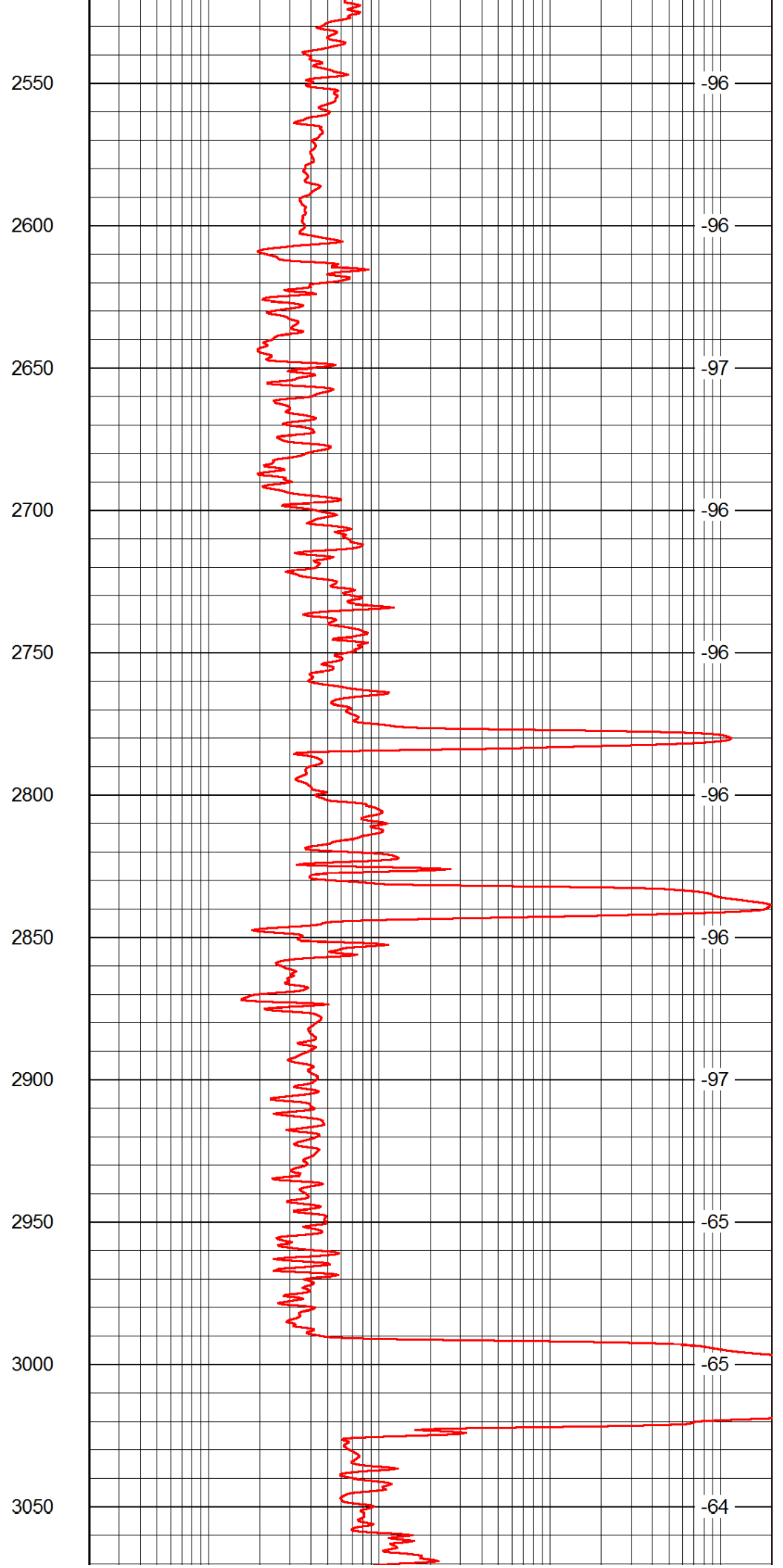
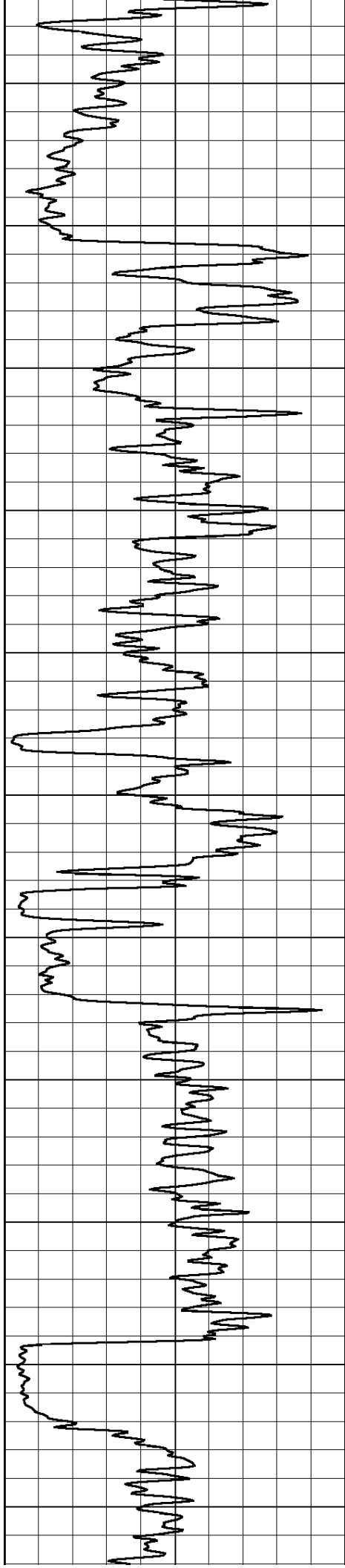
-92

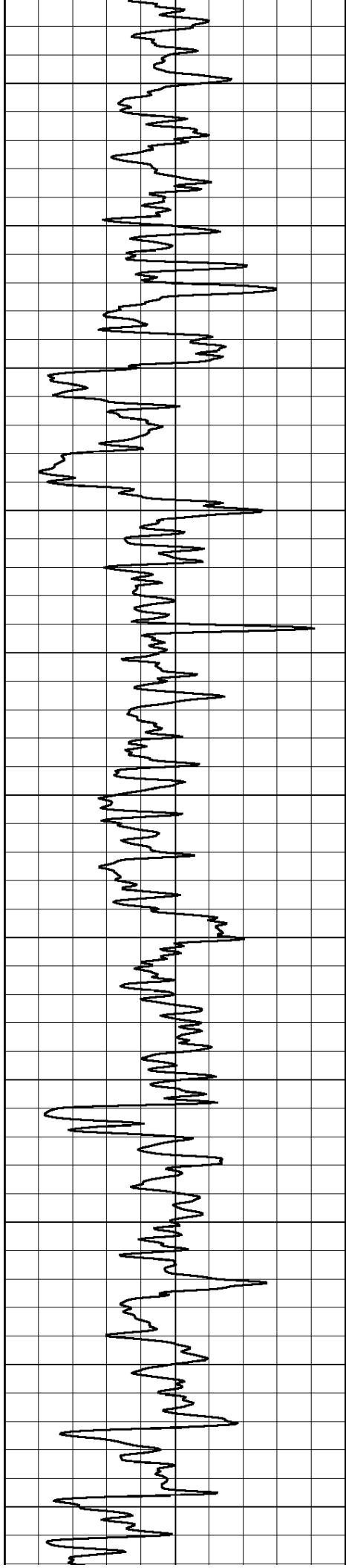
-92

-92

-91

-96





3100

3150

3200

3250

3300

3350

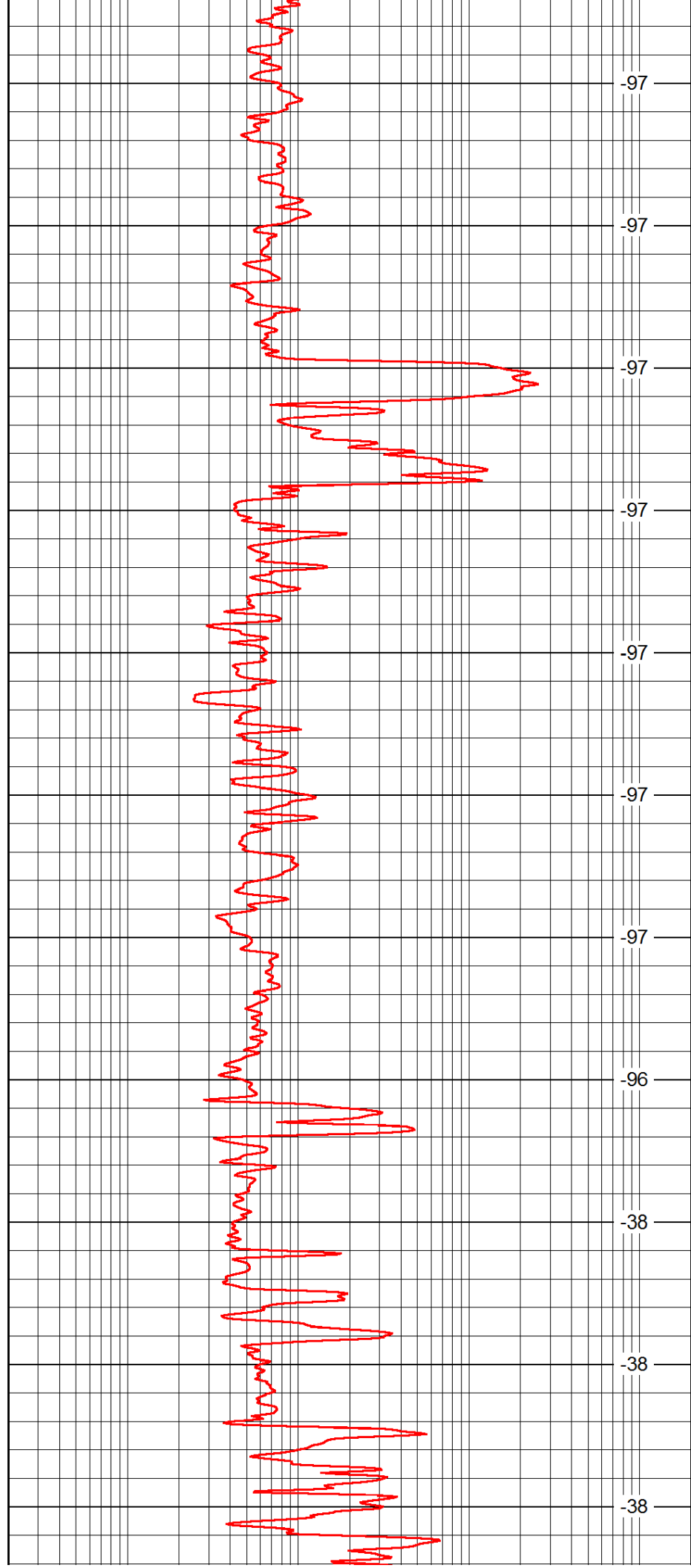
3400

3450

3500

3550

3600



-97

-97

-97

-97

-97

-97

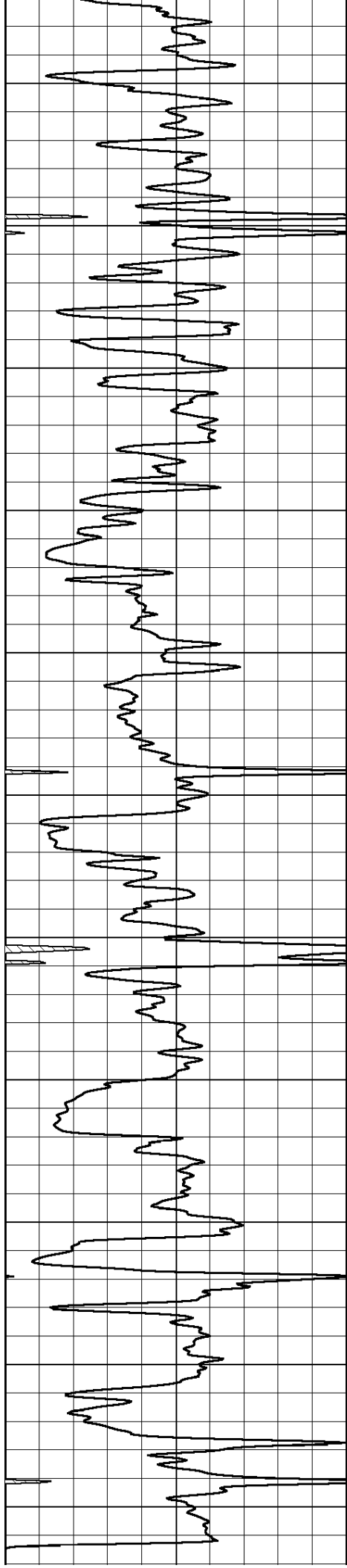
-97

-96

-38

-38

-38



3650

3700

3750

3800

3850

3900

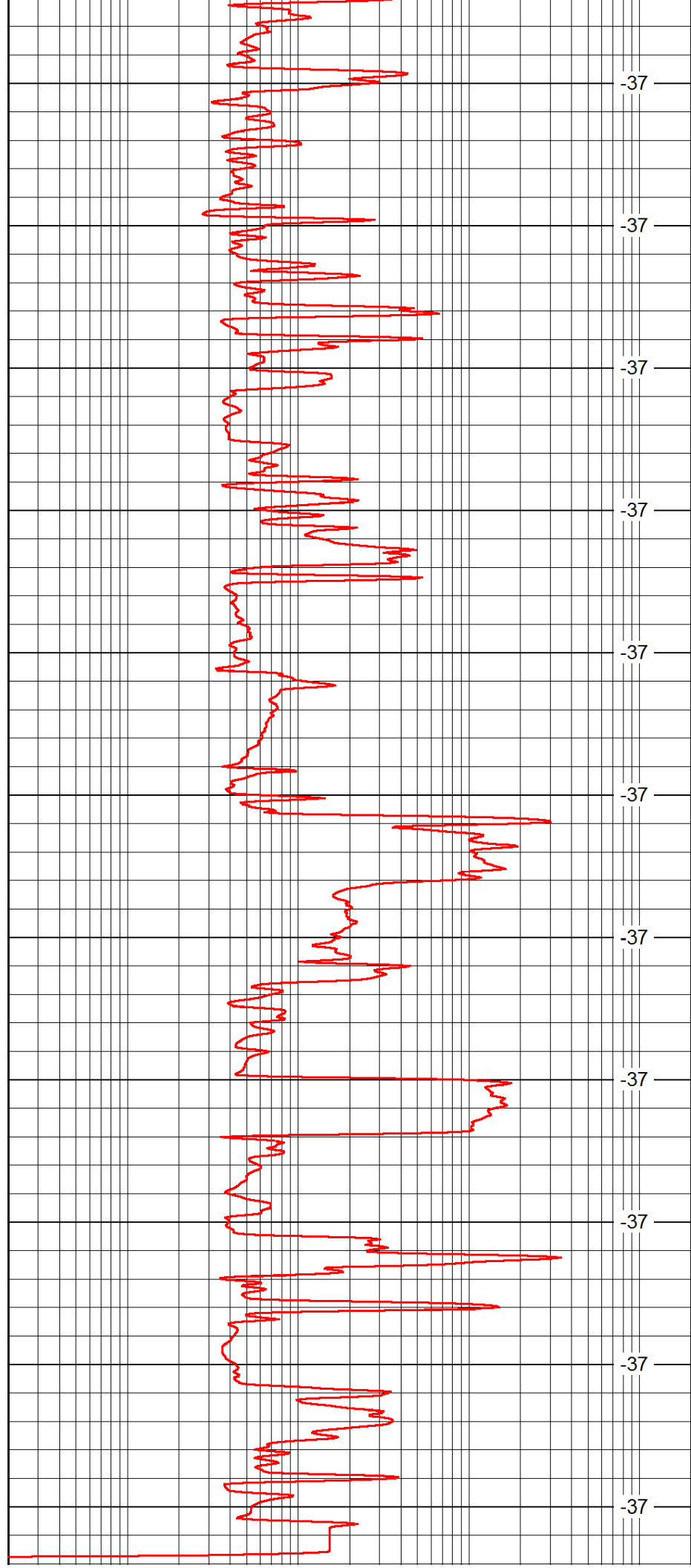
3950

4000

4050

4100

4150



-37

-37

-37

-37

-37

-37

-37

-37

-37

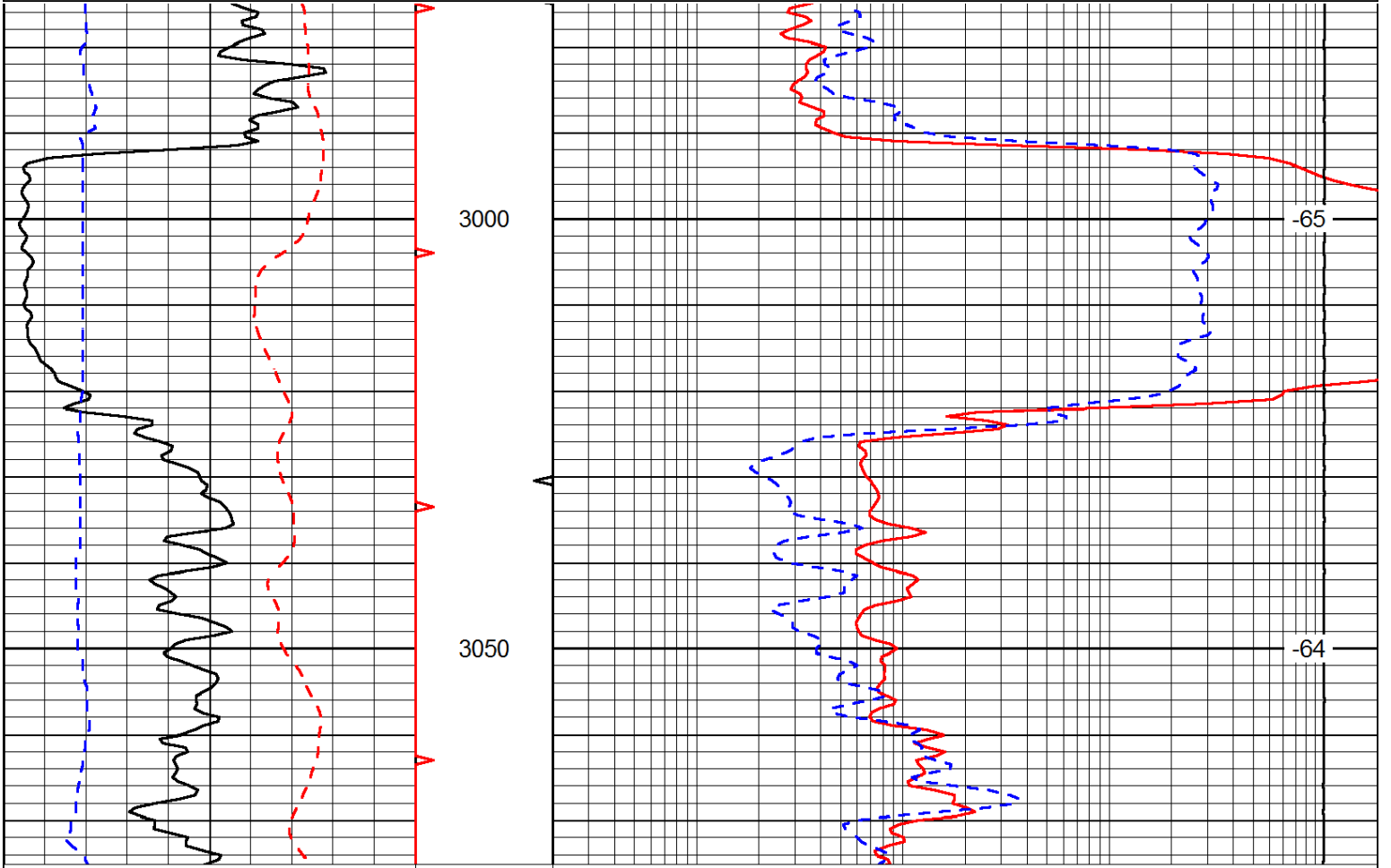
-37

-37

0	Gamma Ray	150	0.2	lgrd	2000
LSPD					

Database File: c:\warrior\data\king production\_vernice #15-5\king\_production\_vernice\_15\_5hd.db  
 Dataset Pathname: RAG/kingrag  
 Presentation Format: rag  
 Dataset Creation: Mon Oct 06 09:36:55 2014  
 Charted by: Depth in Feet scaled 1:240

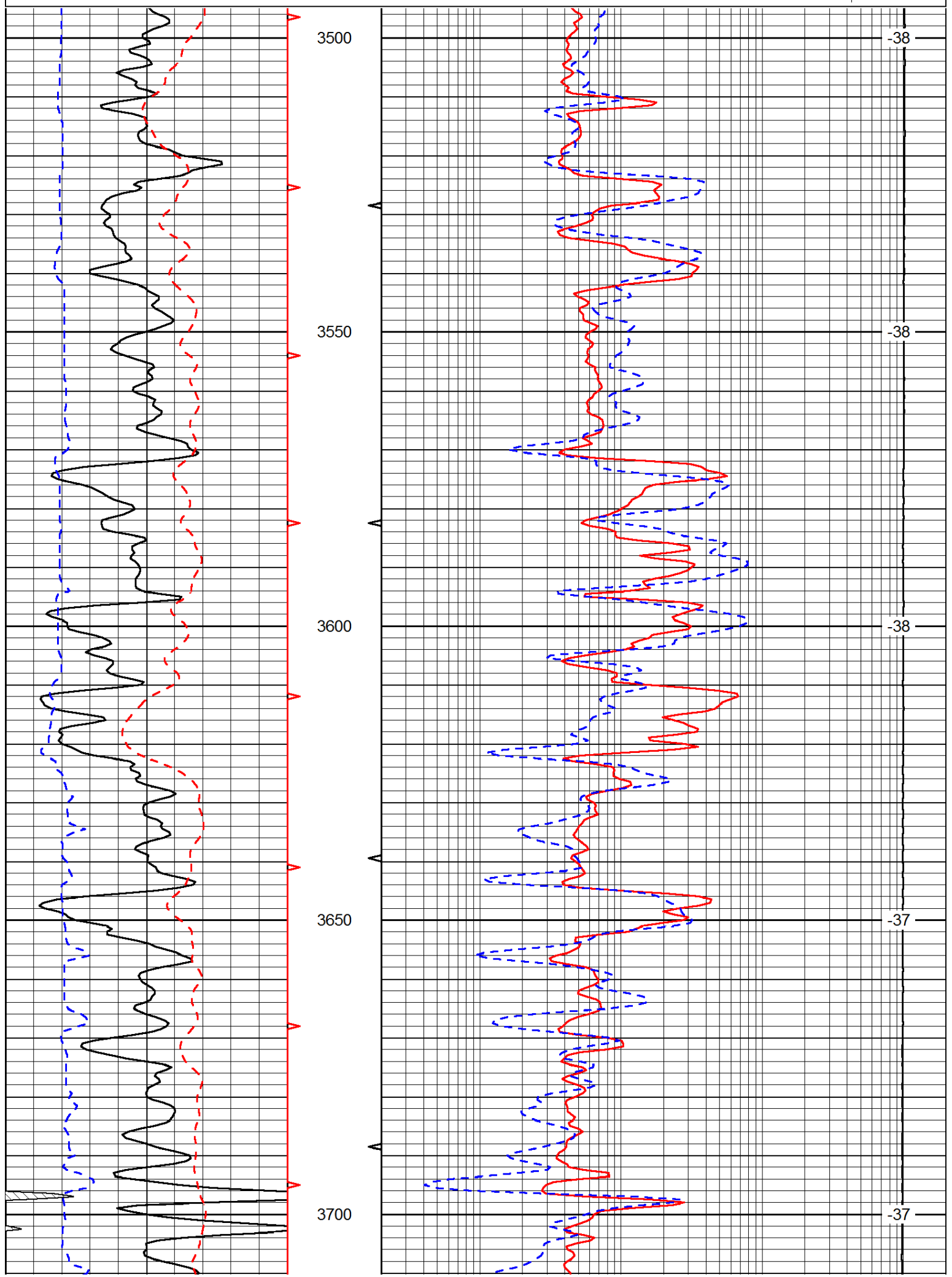
0	Gamma Ray	150	0.2	Long Guard	2000
6	Caliper (GAPI)	16	560	Neuton	2160
-200	SP (mV)	0	15000	Line Tension	0
LSPD					

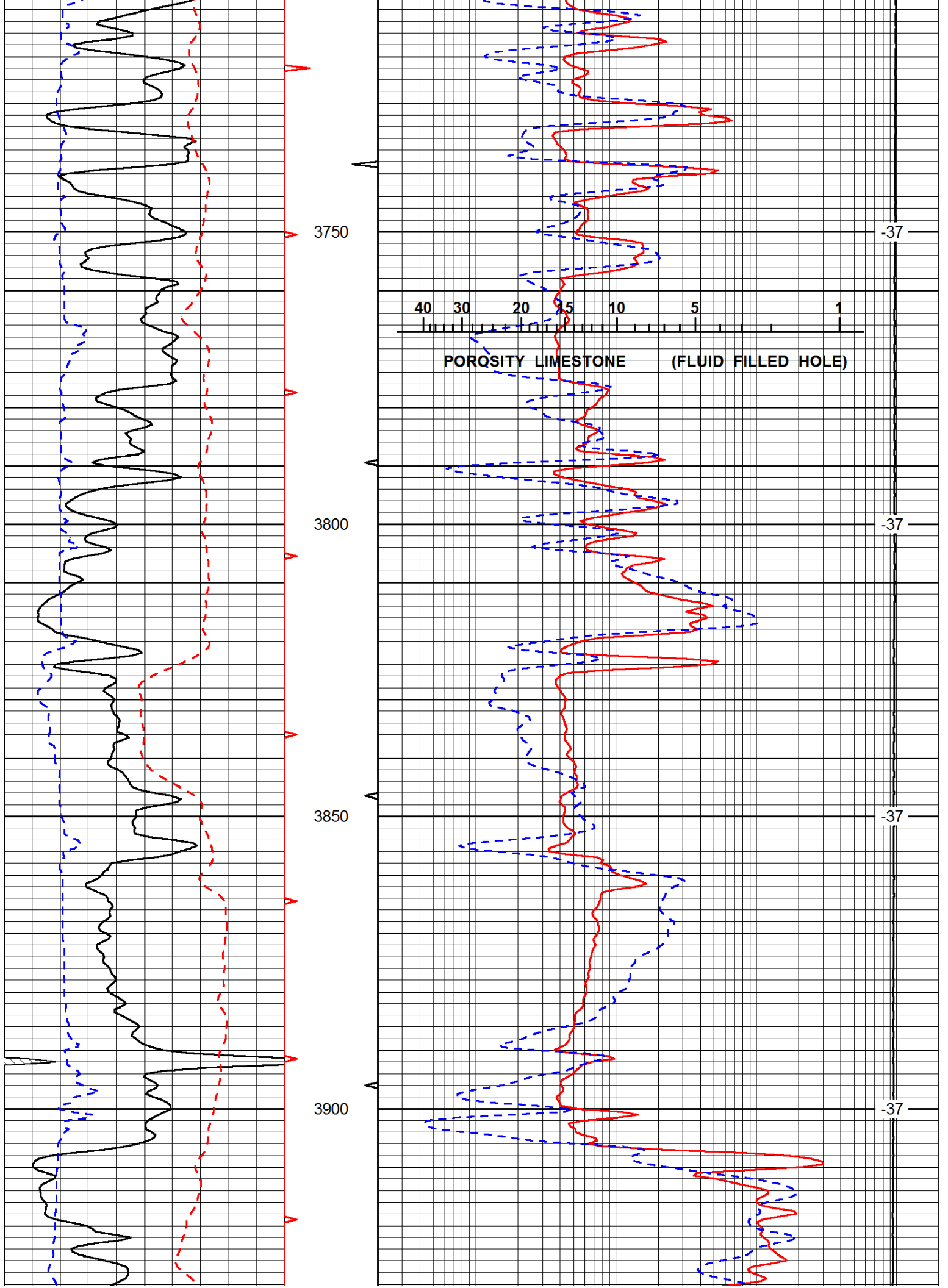


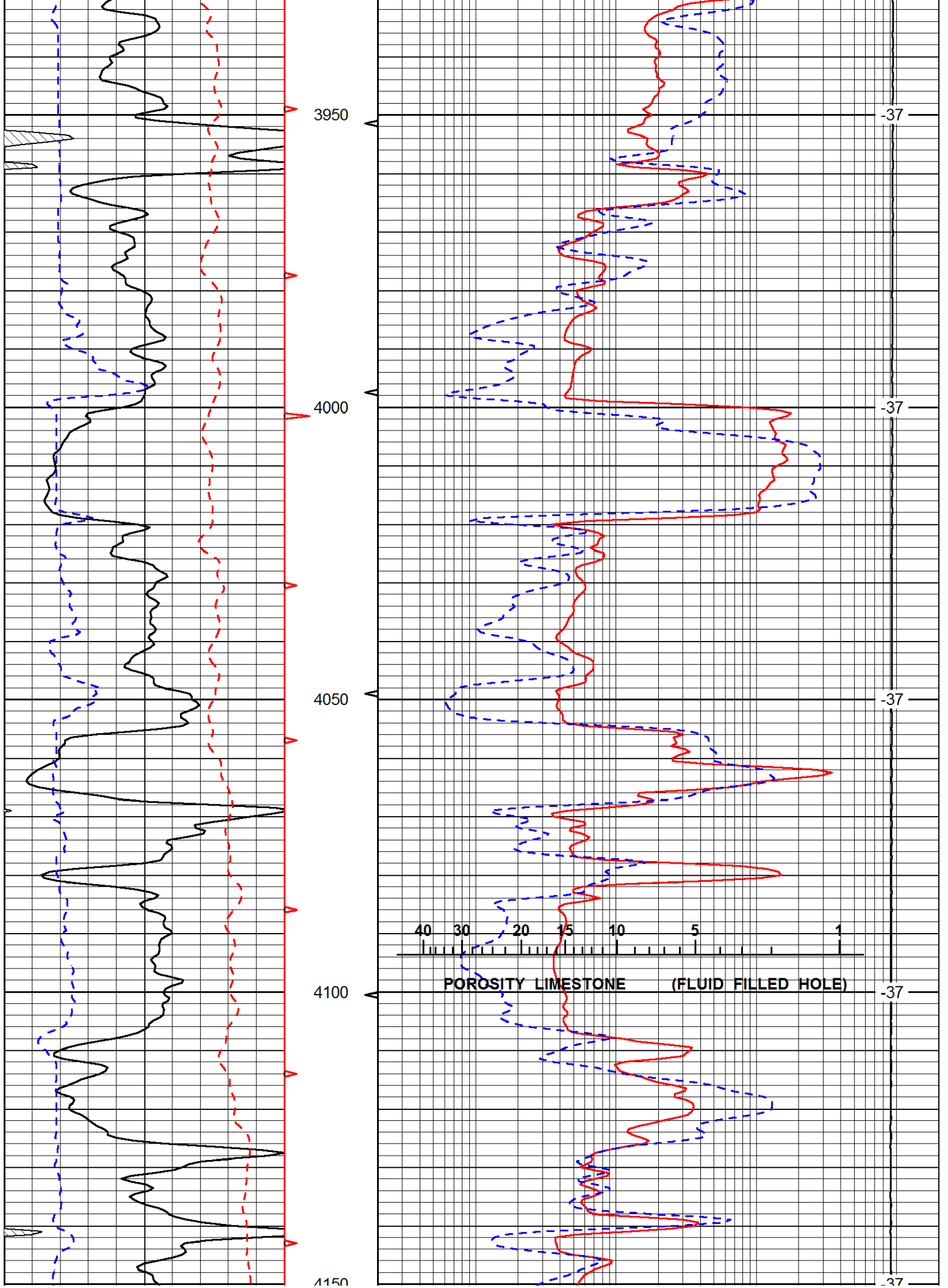
0	Gamma Ray	150	0.2	Long Guard	2000
6	Caliper (GAPI)	16	560	Neuton	2160
-200	SP (mV)	0	15000	Line Tension	0
LSPD					

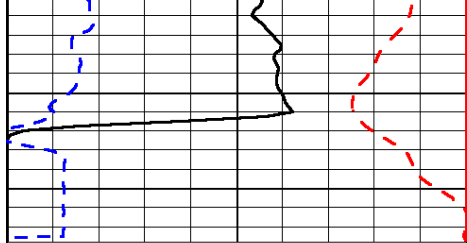
Database File: c:\warrior\data\king production\_vernice #15-5\king\_production\_vernice\_15\_5hd.db  
 Dataset Pathname: RAG/kingrag  
 Presentation Format: rag  
 Dataset Creation: Mon Oct 06 09:36:55 2014  
 Charted by: Depth in Feet scaled 1:240

0	Gamma Ray	150	0.2	Long Guard	2000
6	Caliper (GAPI)	16	560	Neuton	2160
-200	SP (mV)	0	15000	Line Tension	0
LSPD					

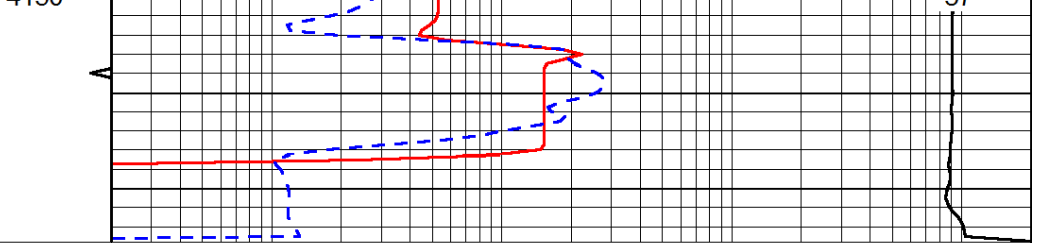








0	Gamma Ray	150
6	Caliper (GAPI)	16
-200	SP (mV)	0



0.2	Long Guard	2000
560	Neutron	2160
15000	Line Tension	0

LSPD