



Pioneer Energy Services

Microresistivity Log

15-153-21,052-00-00

API No.

Company **King Production Services, Inc.**

Well **Vernice #15-5**

Field **Bernos North**

County **Rawlins**

State

Kansas

Location

**W2-SW-SE-SE
330' FSL & 1280' FEL**

Other Services
RAG

Sec: **5**

Twp: **1S**

Rge: **36W**

Elevation

Permanent Datum **Ground Level**

11 Ft. Above Perm. Datum

Elevation 3046

Log Measured From **Kelly Bushing**

11 Ft. Above Perm. Datum

**K.B. 3057
D.F. 3046
G.L. 3046**

Drilling Measured From **Kelly Bushing**

11 Ft. Above Perm. Datum

Elevation 3046

Date **10/6/2014**

Run Number **One**

Depth Driller **4300**

Depth Logger **4170**

Bottom Logged Interval **4169**

Top Log Interval **3500**

Casing Driller **8.625 @ 355**

Casing Logger **350**

Bit Size **7.875**

Type Fluid in Hole **Chemical**

Salinity, ppm CL **900**

Density / Viscosity **9.2 47**

pH / Fluid Loss **10.5 7.2**

Source of Sample **Flowline**

Rm @ Meas. Temp **.59 @ 54**

Rmf @ Meas. Temp **.44 @ 54**

Rmc @ Meas. Temp **.80 @ 54**

Source of Rmf / Rmc **Charts**

Rm @ BHT **.26 @ 121**

Operating Rig Time **3 1/2 Hours**

Max Rec. Temp. F **121**

Equipment Number **91**

Location **Hays**

Recorded By **J. Henrickson**

Witnessed By **Robert Hopkins**

<<< Fold Here >>>

All interpretations are opinions based on inferences from electrical or other measurements and we cannot and do not guarantee the accuracy or correctness of any interpretation, and we shall not, except in the case of gross or willful negligence on our part, be liable or responsible for any loss, costs, damages, or expenses incurred or sustained by anyone resulting from any interpretation made by any of our officers, agents or employees. These interpretations are also subject to our general terms and conditions set out in our current Price Schedule.

Comments

Thank you for using Pioneer Energy Services
www.pioneeres.com
785 625 3858

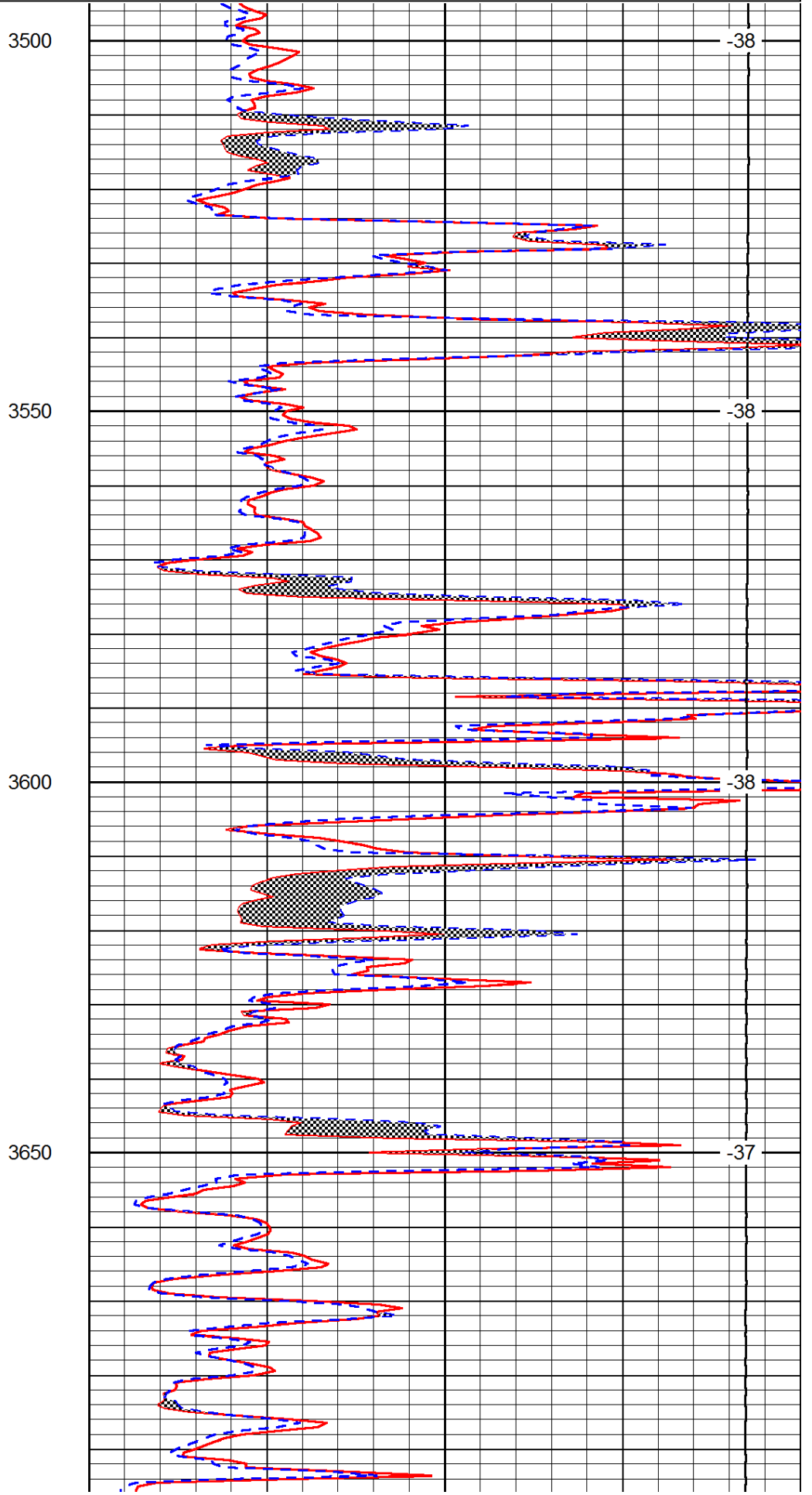
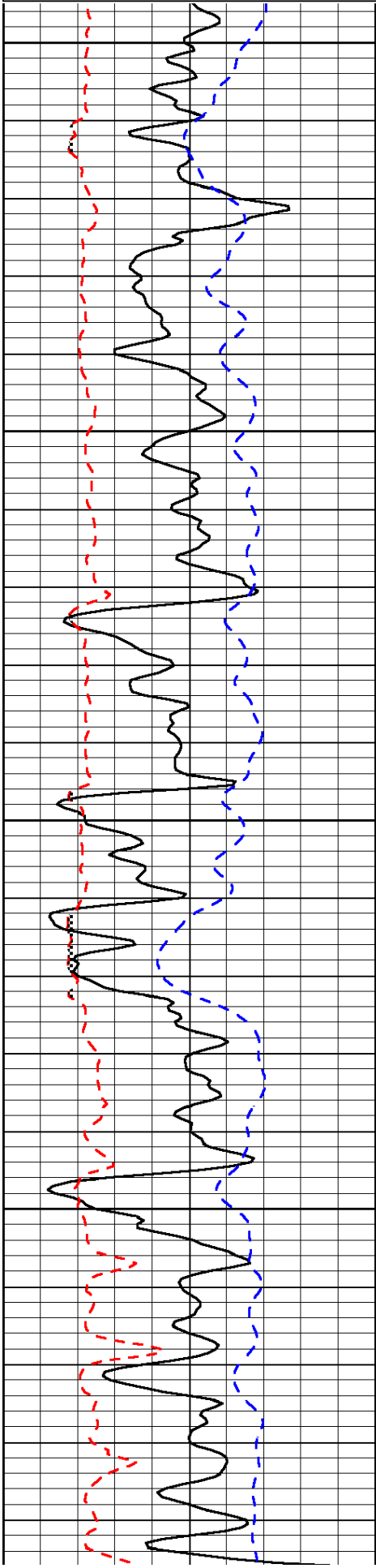
McDonald Kansas
15 North, West Into

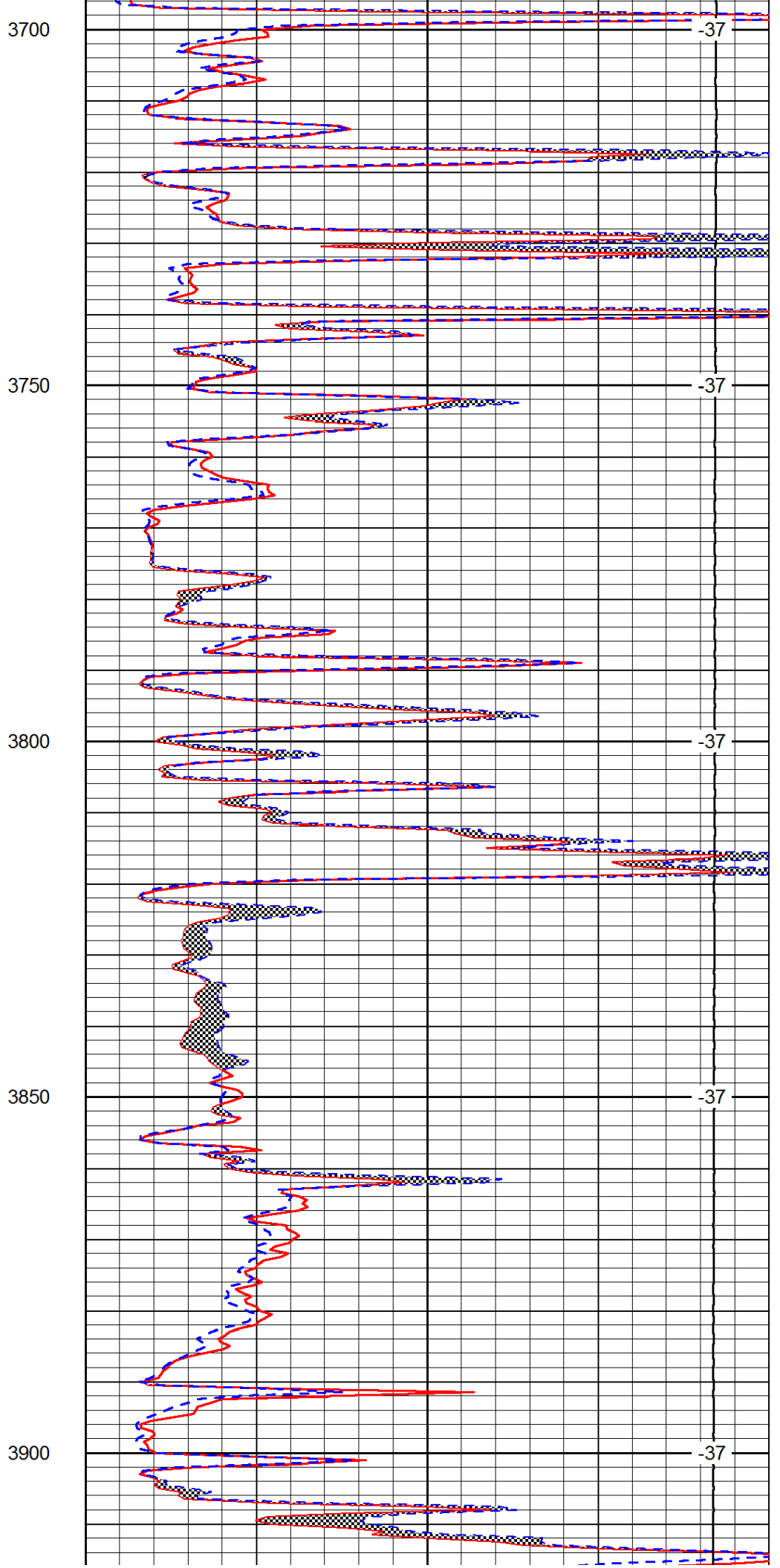
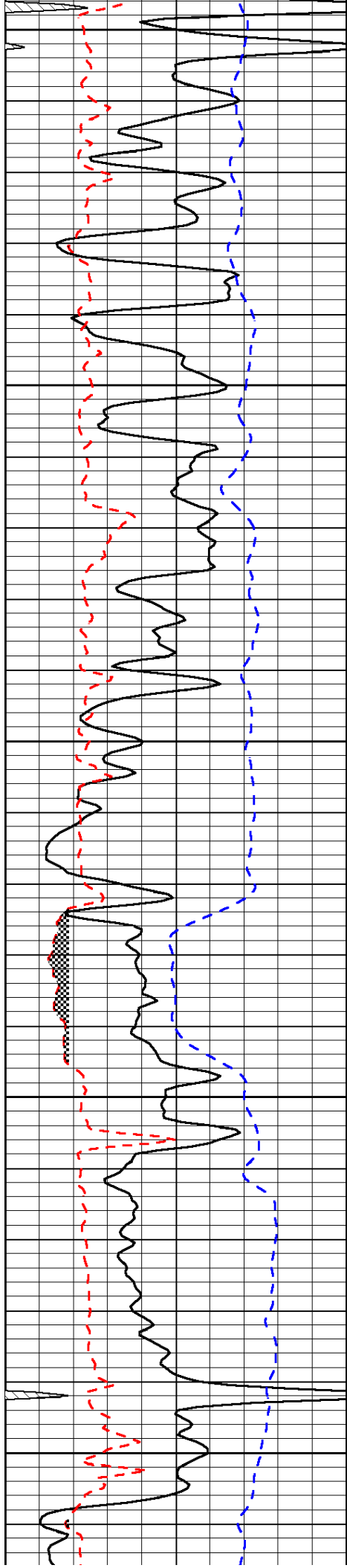
Database File: c:\warrior\data\king production_vernice #15-5\king_production_vernice_15_5hd.db
Dataset Pathname: RAG/kingrag
Presentation Format: micro
Dataset Creation: Mon Oct 06 09:36:55 2014
Charted by: Depth in Feet scaled 1:240

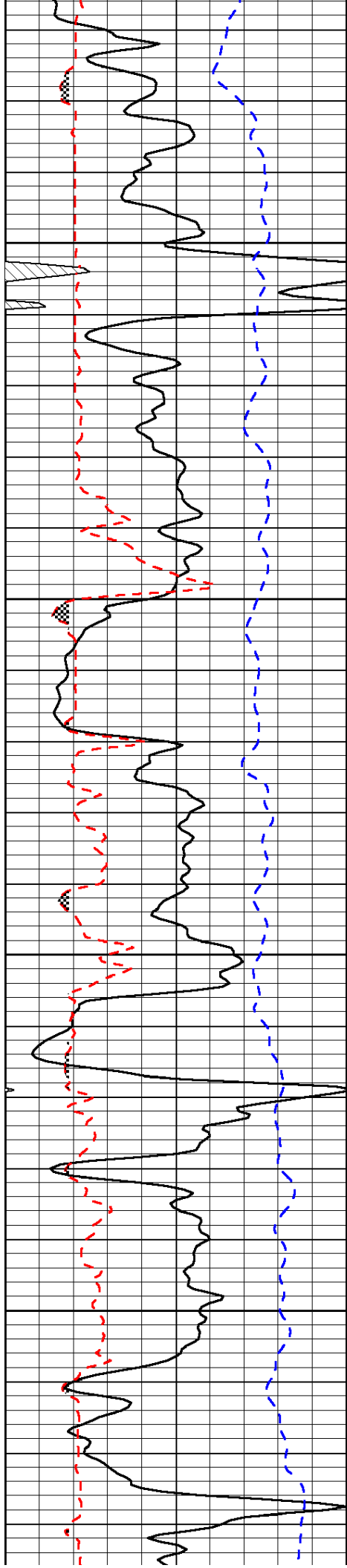
0	Gamma Ray	150
6	Micro Log Caliper (GAPI)	16
-200	SP (mV)	0

0	Micro Inverse 1 X 1	40
0	Micro Normal 2"	40
15000	Line Weight	0

LSPD





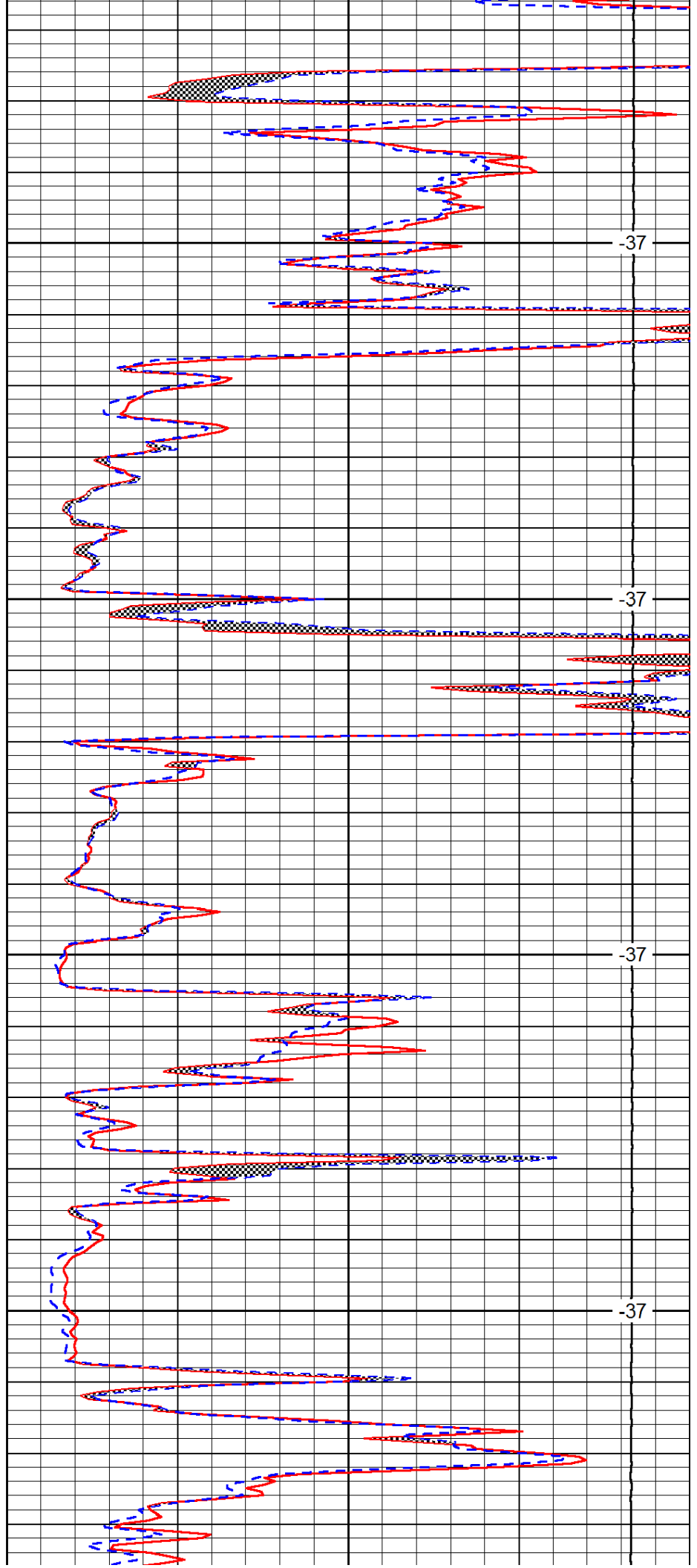


3950

4000

4050

4100

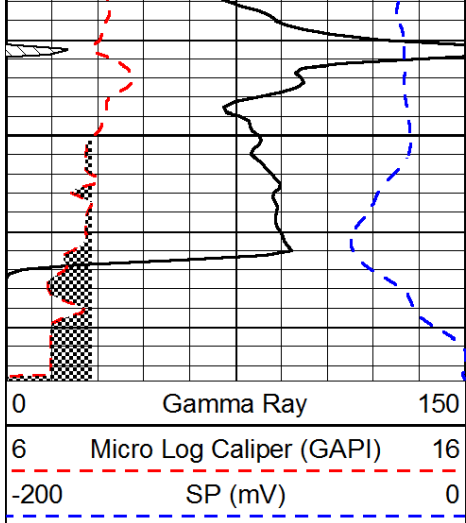


-37

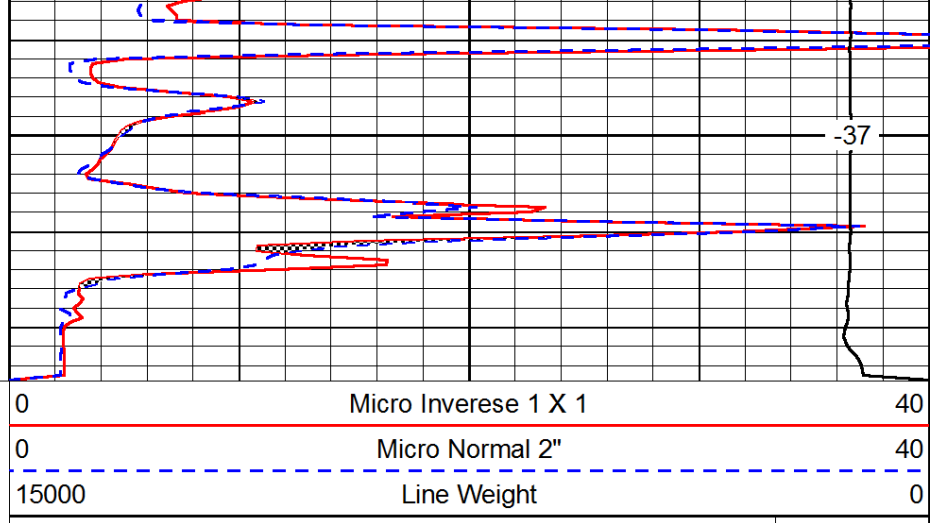
-37

-37

-37



4150



-37

LSPD