



Pioneer Energy Services

Radiation Guard Log

15-147-20,745-00-00

Company Bach Oil Production
Well CK Unit #1
Field Wildcat
County Phillips **State** Kansas
Location NW NW SW NE
 3750' FSL & 2630' FEL
Sec: 2 **Twp:** 1S **Rge:** 19W

Other Services
 MEL
 Elevation
 K.B. 2001
 D.F. G.L. 1996

Permanent Datum	Ground Level	Elevation 1996
Log Measured From	Kelly Bushing	5 Ft. Above Perm. Datum
Drilling Measured From	Kelly Bushing	
Date		9/15/2014
Run Number		One
Depth Driller		3430
Depth Logger		3422
Bottom Logged Interval		3421
Top Log Interval		200
Casing Driller		8.625 @ 219
Casing Logger		218
Bit Size		7.875
Type Fluid in Hole		Chemical
Salinity, ppm CL		500
Density / Viscosity		8.8 48
pH / Fluid Loss		10.5 5.6
Source of Sample		Flowline
Rm @ Meas. Temp		0.90 @ 70
Rmf @ Meas. Temp		0.68 @ 70
Rmc @ Meas. Temp		1.22 @ 70
Source of Rmf / Rmc		Charts
Rm @ BHT		0.57 @ 110
Operating Rig Time		4 Hours
Max Rec. Temp. F		110
Equipment Number		15
Location		Hays
Recorded By		D.Kerr
Witnessed By		Bob Peterson

<<< Fold Here >>>

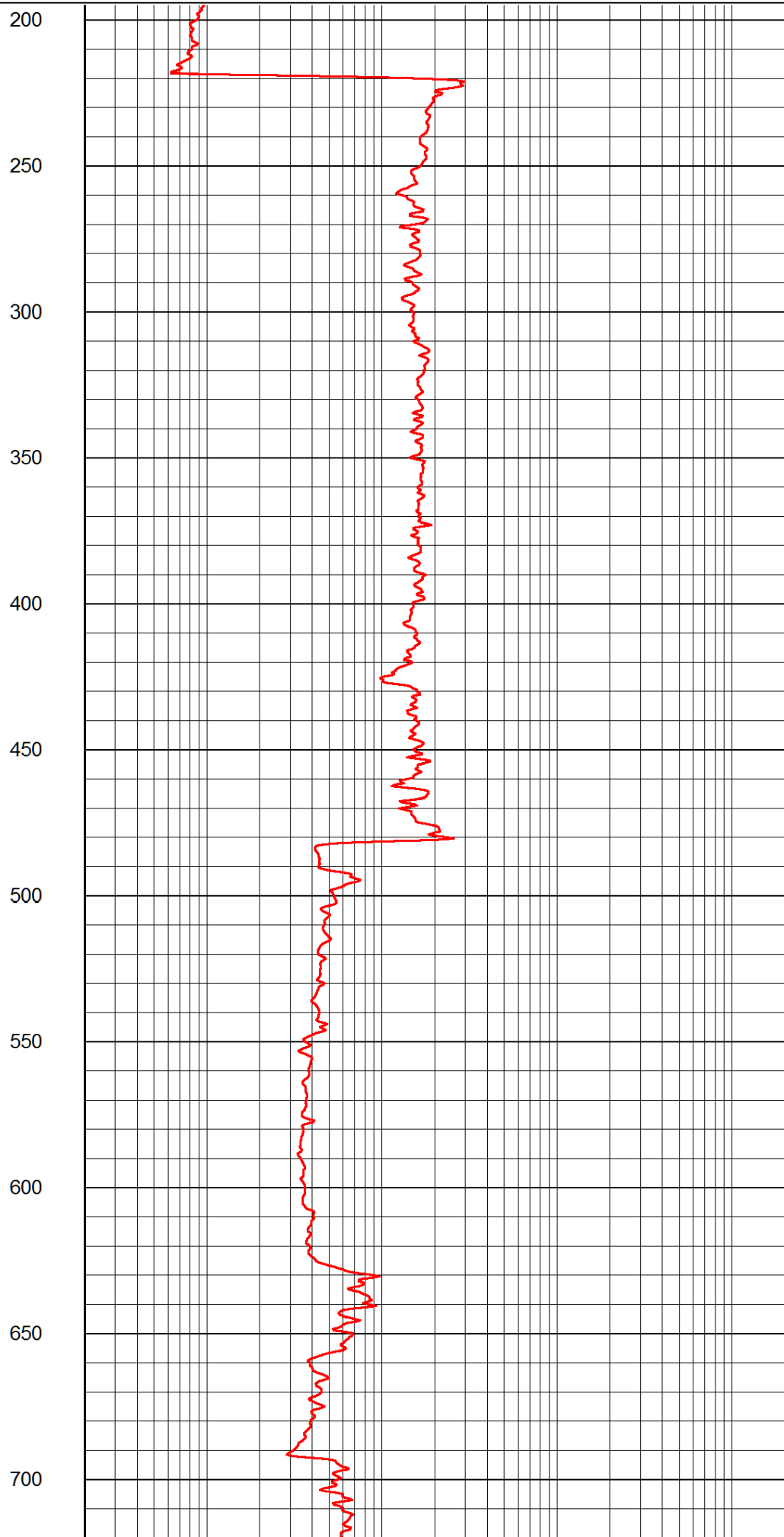
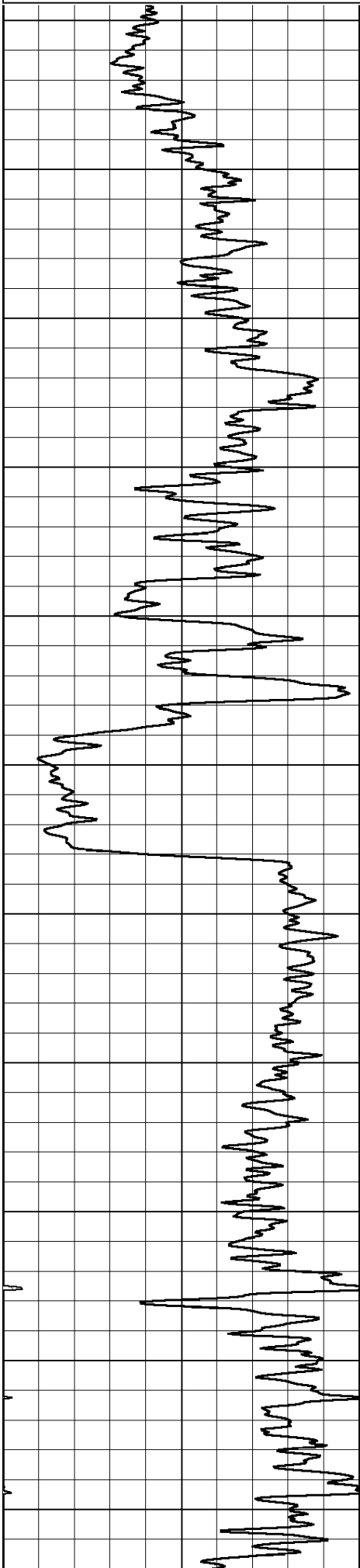
All interpretations are opinions based on inferences from electrical or other measurements and we cannot and do not guarantee the accuracy or correctness of any interpretation, and we shall not, except in the case of gross or willful negligence on our part, be liable or responsible for any loss, costs, damages, or expenses incurred or sustained by anyone resulting from any interpretation made by any of our officers, agents or employees. These interpretations are also subject to our general terms and conditions set out in our current Price Schedule.

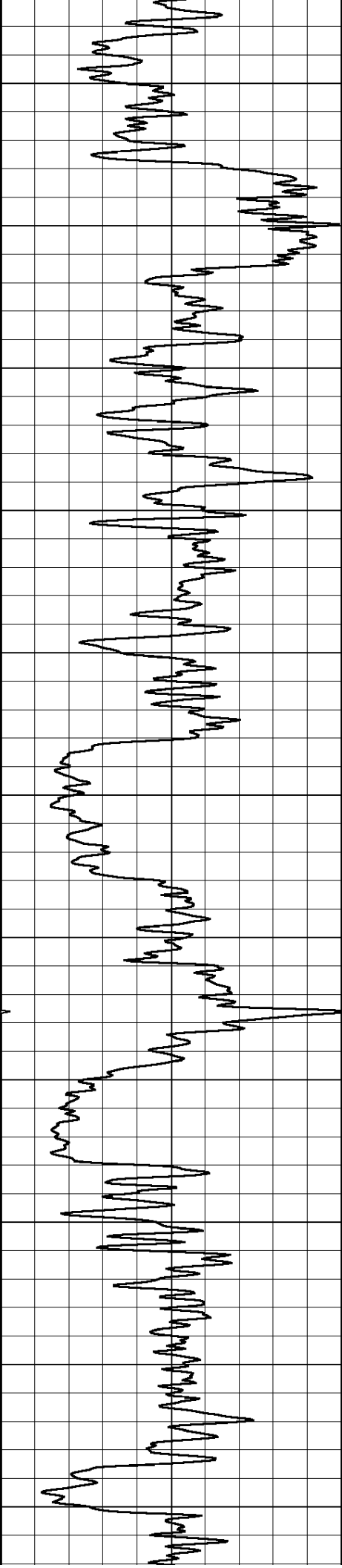
Comments

Thank you for using Log-Tech, Inc.
 (785) 625-3858

 Phillipsburg KS, North to HWY 383,
 5 West to 600 RD, 1 North, 1 East, North Into

Database File: bach_ckunit_1hd.db
 Dataset Pathname: rag/bachrag
 Presentation Format: rag2in
 Dataset Creation: Mon Sep 15 03:37:12 2014
 Charted by: Depth in Feet scaled 1:600





750

800

850

900

950

1000

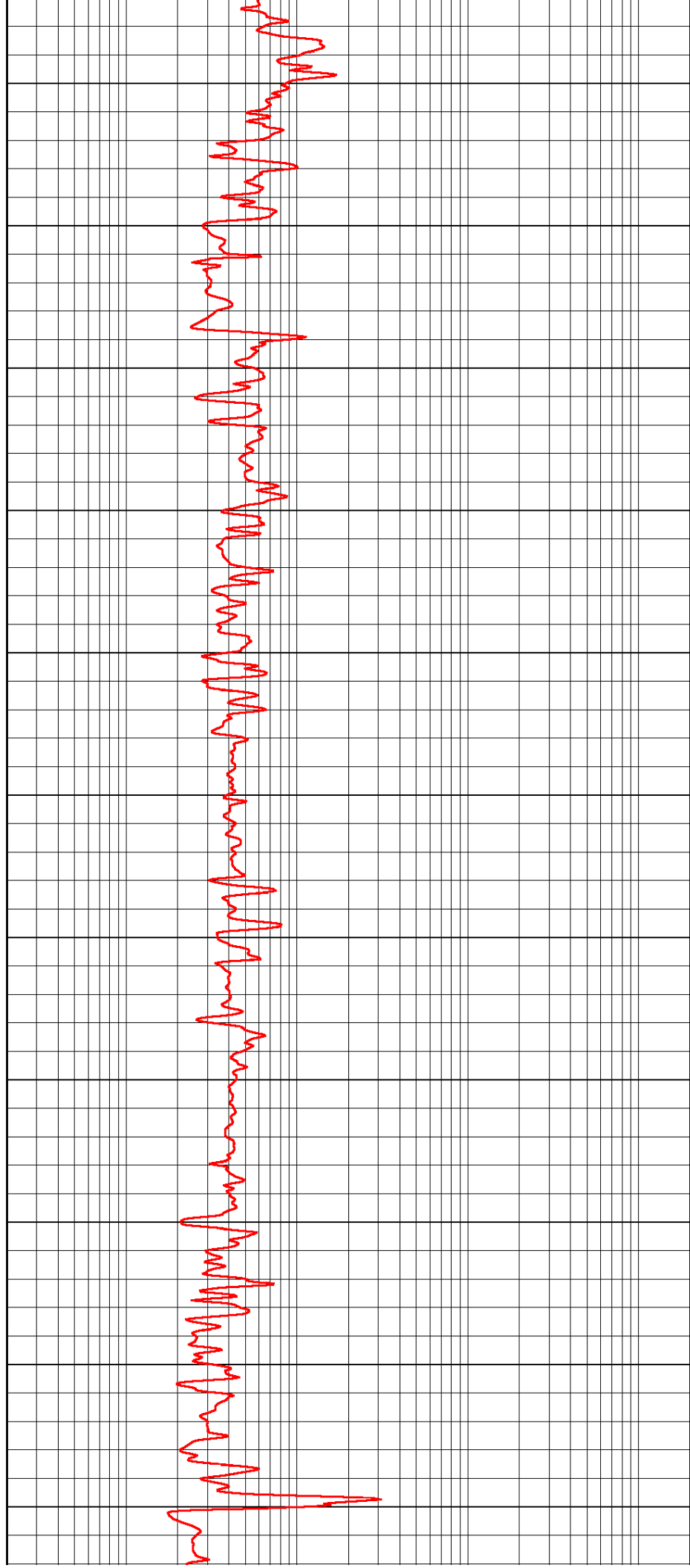
1050

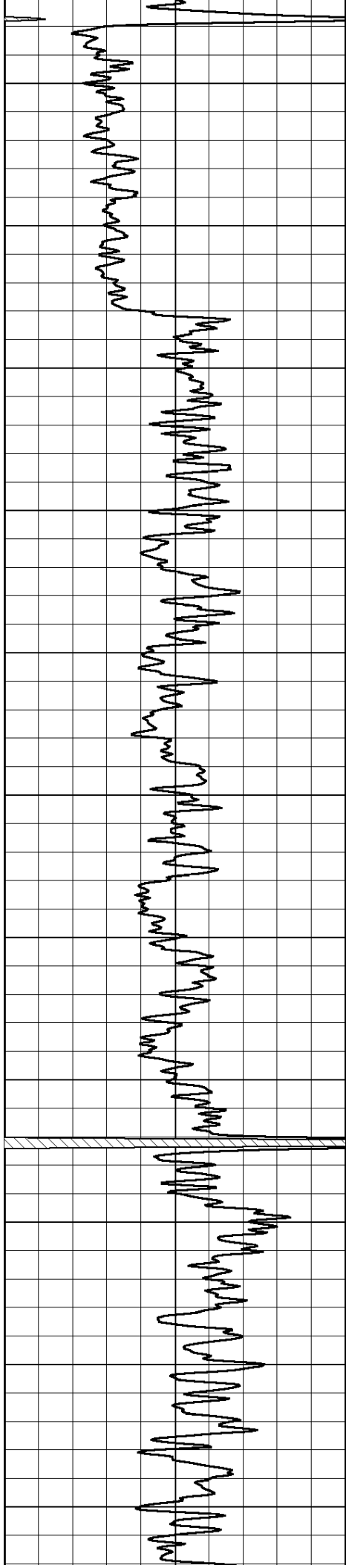
1100

1150

1200

1250





1300

1350

1400

1450

1500

1550

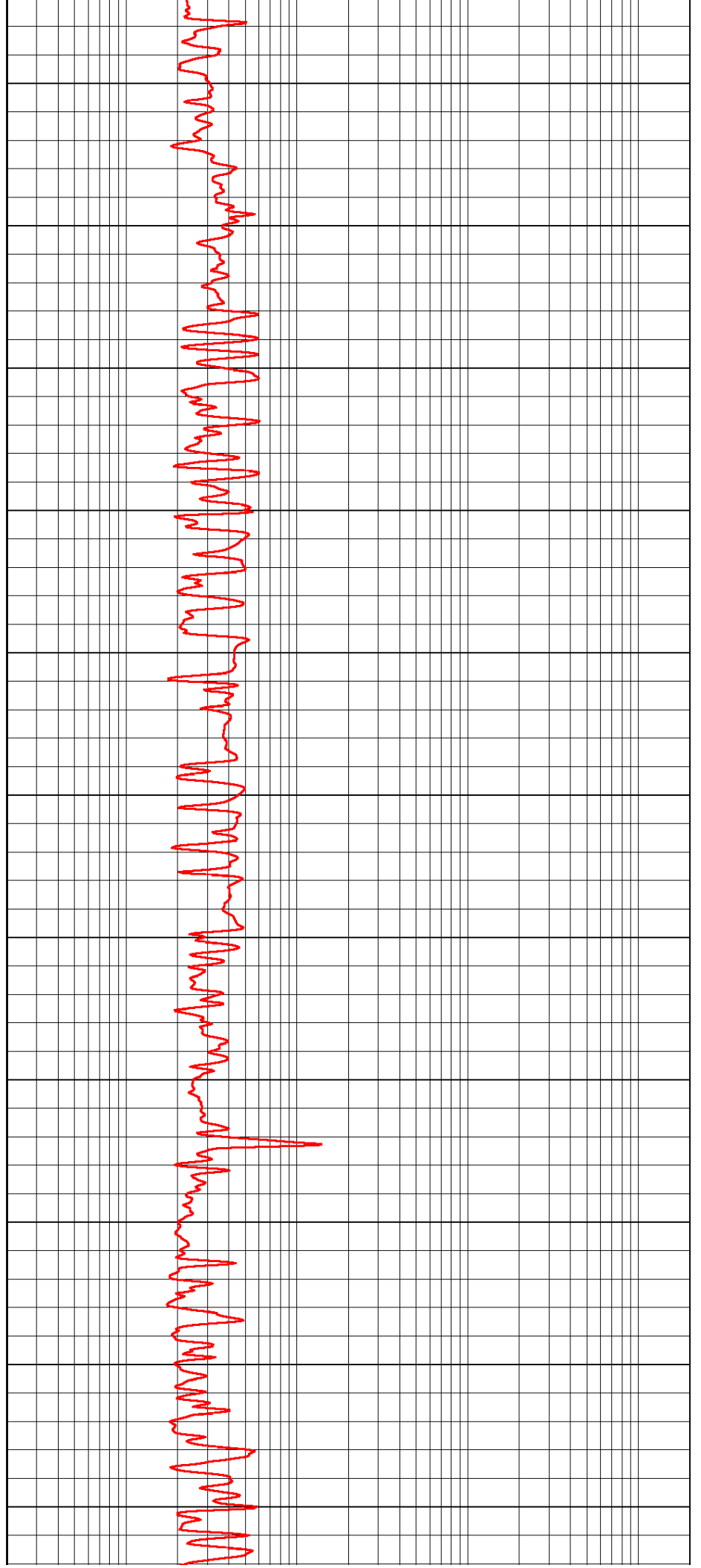
1600

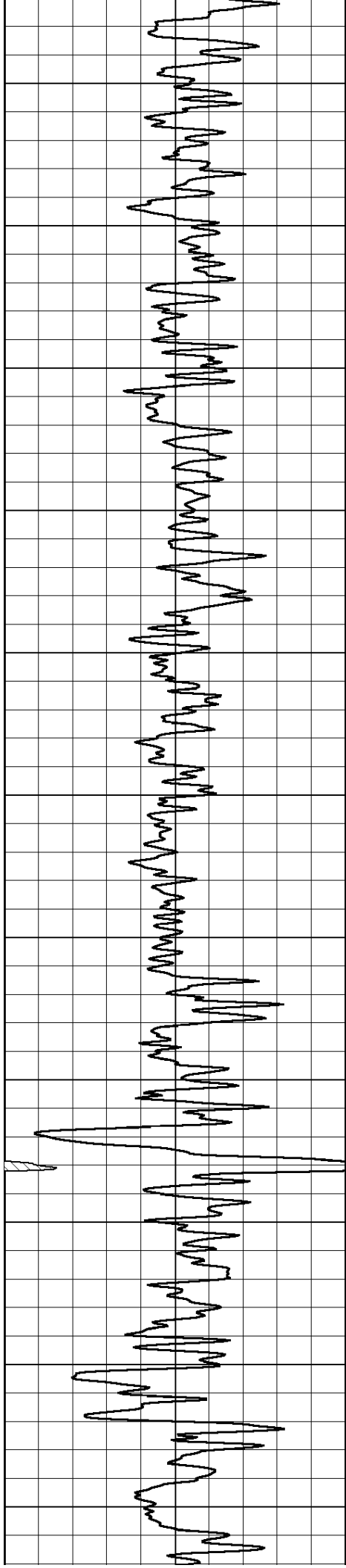
1650

1700

1750

1800





1850

1900

1950

2000

2050

2100

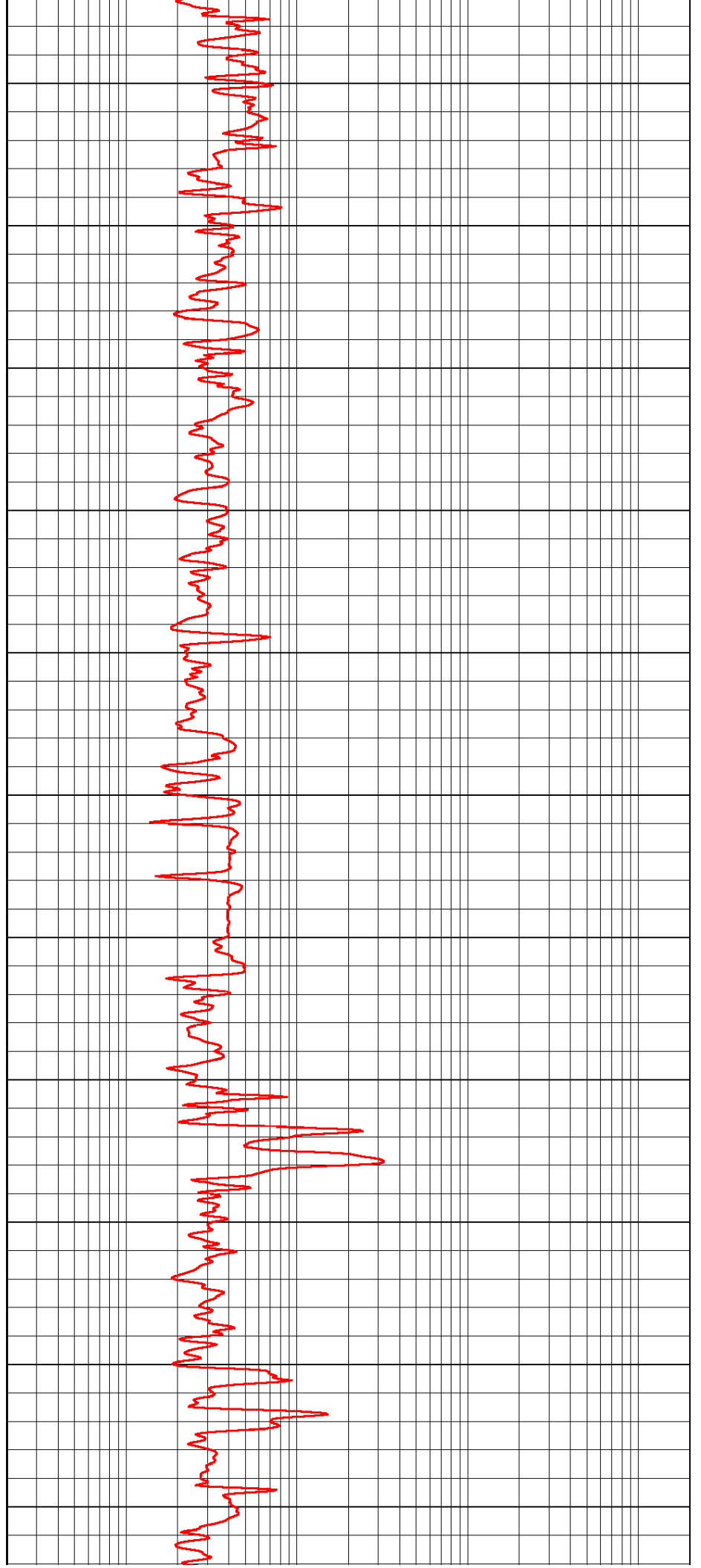
2150

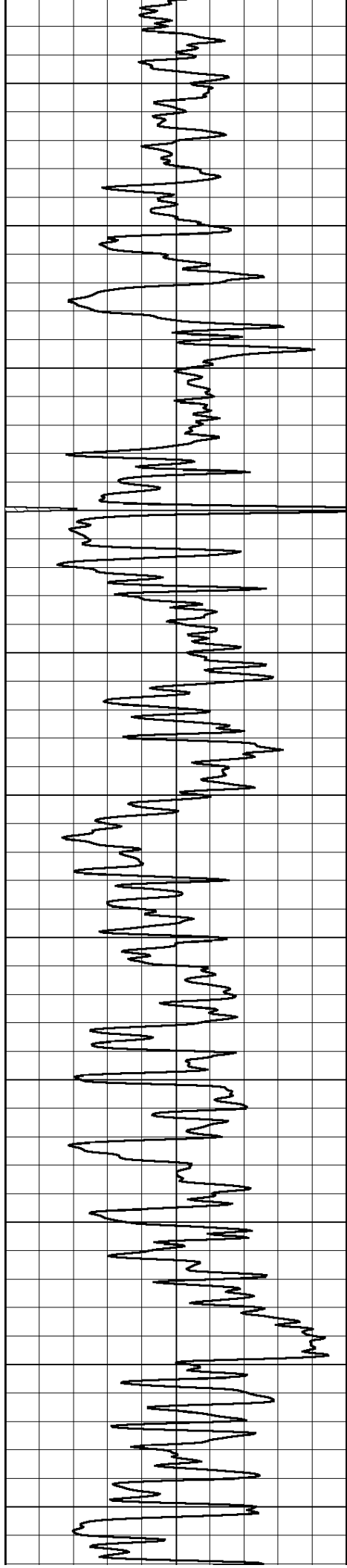
2200

2250

2300

2350





2400

2450

2500

2550

2600

2650

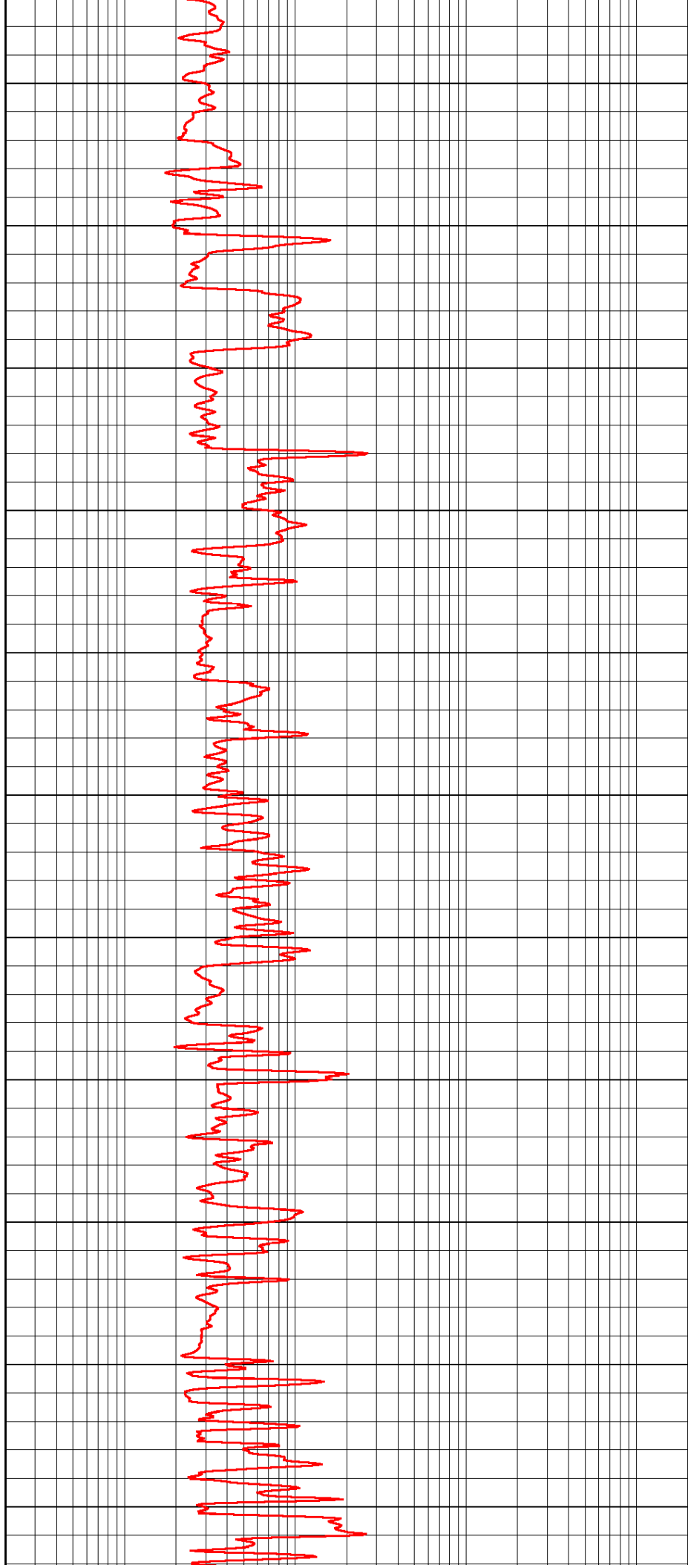
2700

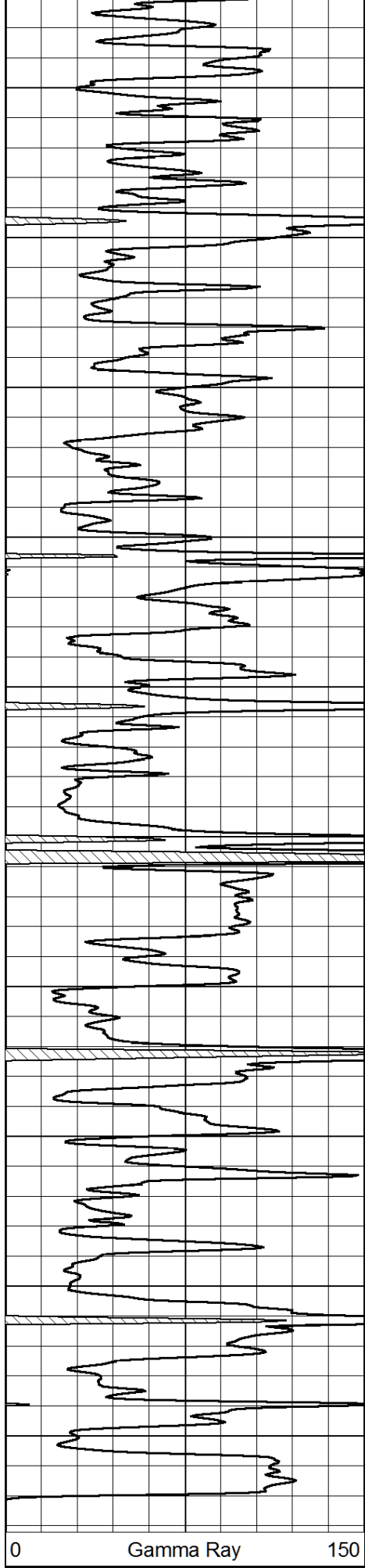
2750

2800

2850

2900





2950

3000

3050

3100

3150

3200

3250

3300

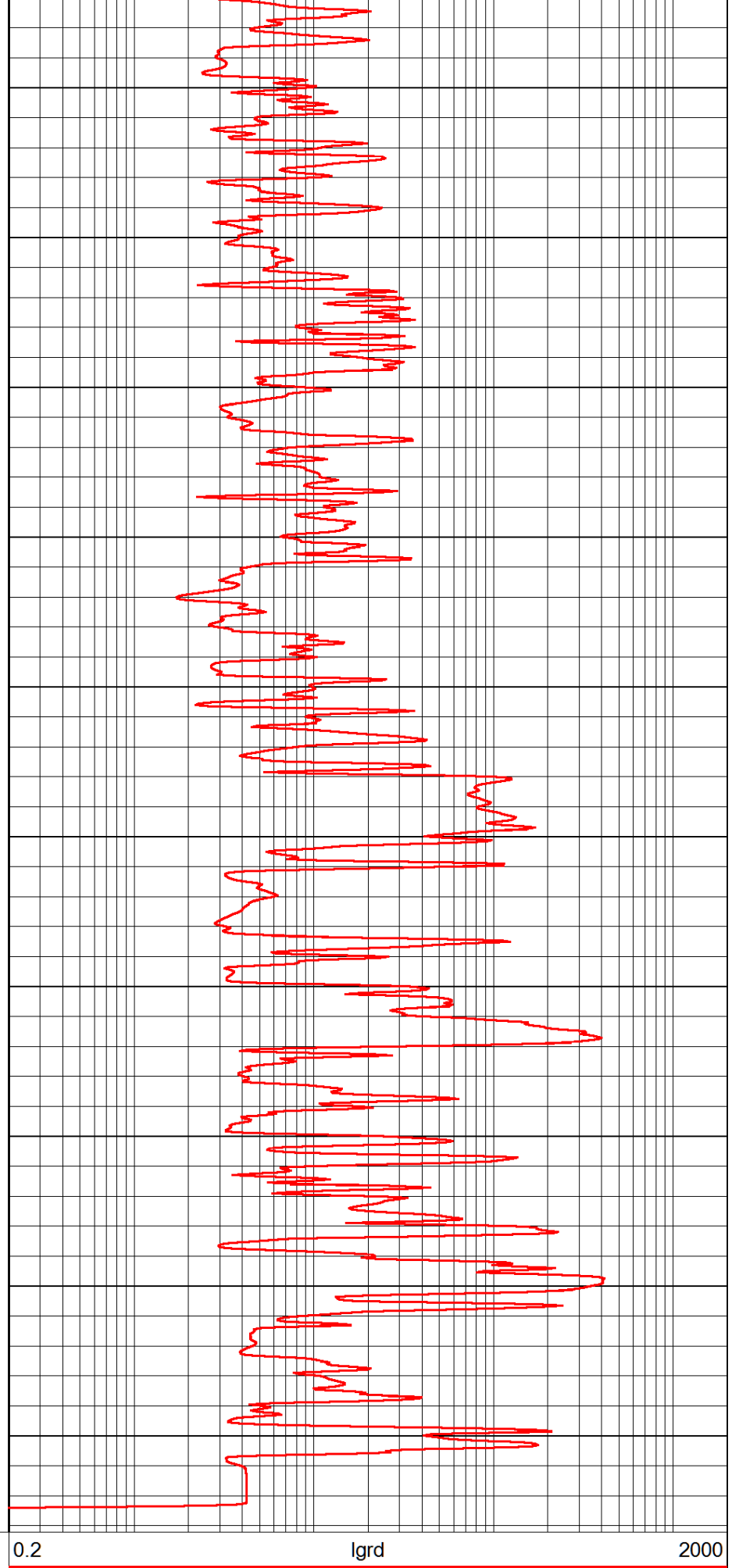
3350

3400

0

Gamma Ray

150



0.2

lgd

2000

Database File: bach_ckunit_1hd.db
 Dataset Pathname: rag/bachrag
 Presentation Format: rag
 Dataset Creation: Mon Sep 15 03:37:12 2014
 Charted by: Depth in Feet scaled 1:240

0	Gamma Ray	150
6	Caliper (GAPI)	16
-200	sp (mV)	0

0.2	LGRD	2000
560	SWNC	2160
15000	Line Tension	0

LSPD

