



Pioneer Energy Services

Microresistivity Log

15-049-22,599-00-00

API No.

Company Lone Wolf Oil

Well Cain #1

Field Love

County Elk State

Kansas

Location 1980' FSL & 2970' FEL

Sec: 36 Twp: 30S Rge: 9E

Permanent Datum Ground Level Elevation 1284

Log Measured From Kelly Bushing 6 Ft. Above Perm. Datum

Drilling Measured From Kelly Bushing

Other Services

CNL/CDL

DIL

Date 9/5/2014

Run Number One

Depth Driller 2695

Depth Logger 2689

Bottom Logged Interval 2688

Top Log Interval 1500

Casing Driller 8.625 @ 42

Casing Logger 42

Bit Size 7.875

Type Fluid in Hole Chemical

Salinity,ppm CL 550

Density / Viscosity 9.1 39

pH / Fluid Loss 9.0 10.4

Source of Sample Flowline

Rm @ Meas. Temp 1.65 @ 71

Rmf @ Meas. Temp 1.24 @ 71

Rmc @ Meas. Temp 2.23 @ 71

Source of Rmf / Rmc Charts

Rm @ BHT 1.14 @ 103

Operating Rig Time 3 Hours

Max Rec. Temp. F 103

Equipment Number 10

Location Hays

Recorded By C. Desai

Witnessed By Joe Baker

<<< Fold Here >>>

All interpretations are opinions based on inferences from electrical or other measurements and we cannot and do not guarantee the accuracy or correctness of any interpretation, and we shall not, except in the case of gross or willful negligence on our part, be liable or responsible for any loss, costs, damages, or expenses incurred or sustained by anyone resulting from any interpretation made by any of our officers, agents or employees. These interpretations are also subject to our general terms and conditions set out in our current Price Schedule.

Comments

Thank you for using Pioneer Energy Services
www.pioneerenergy.com
 785 625 3858

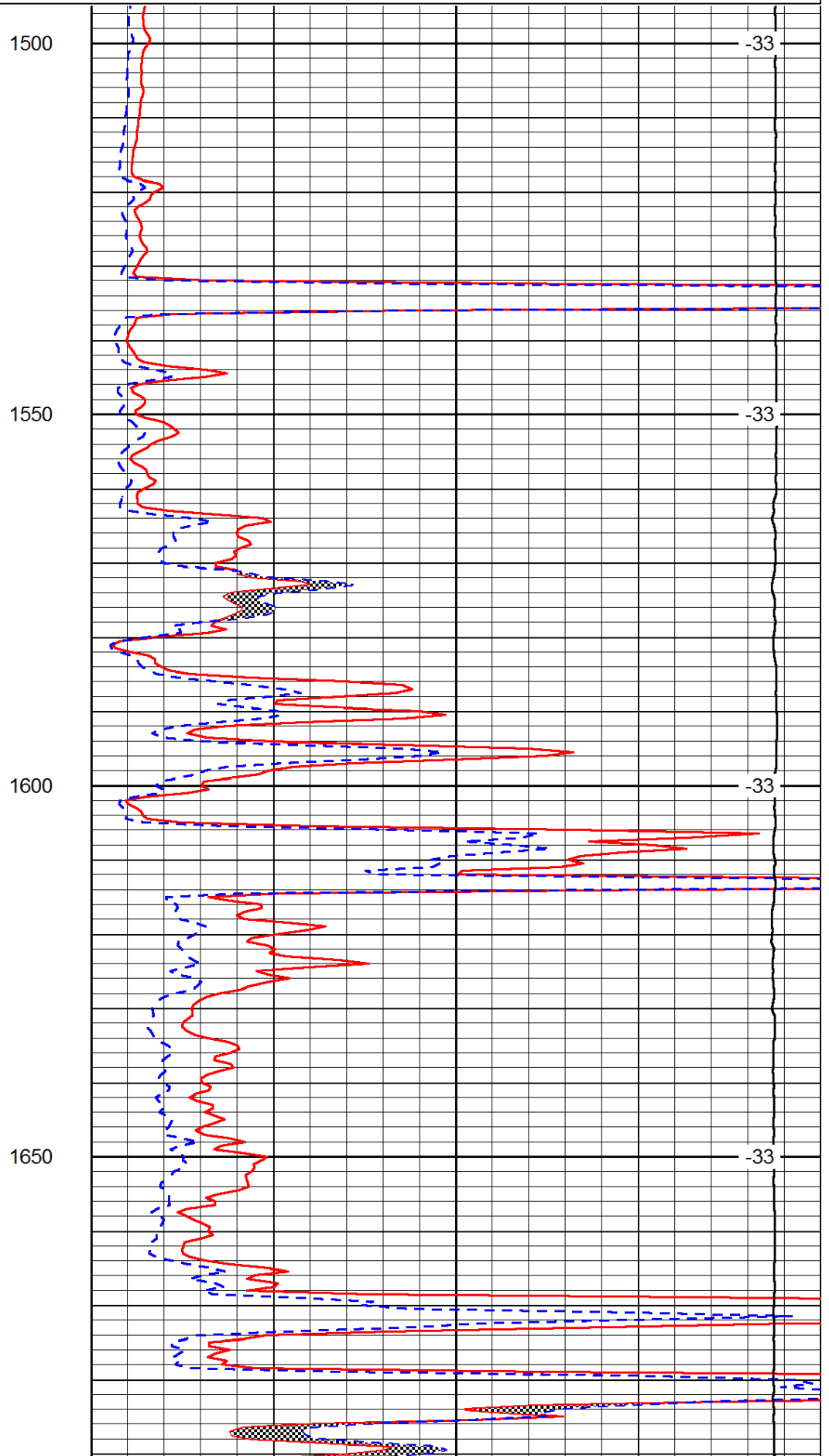
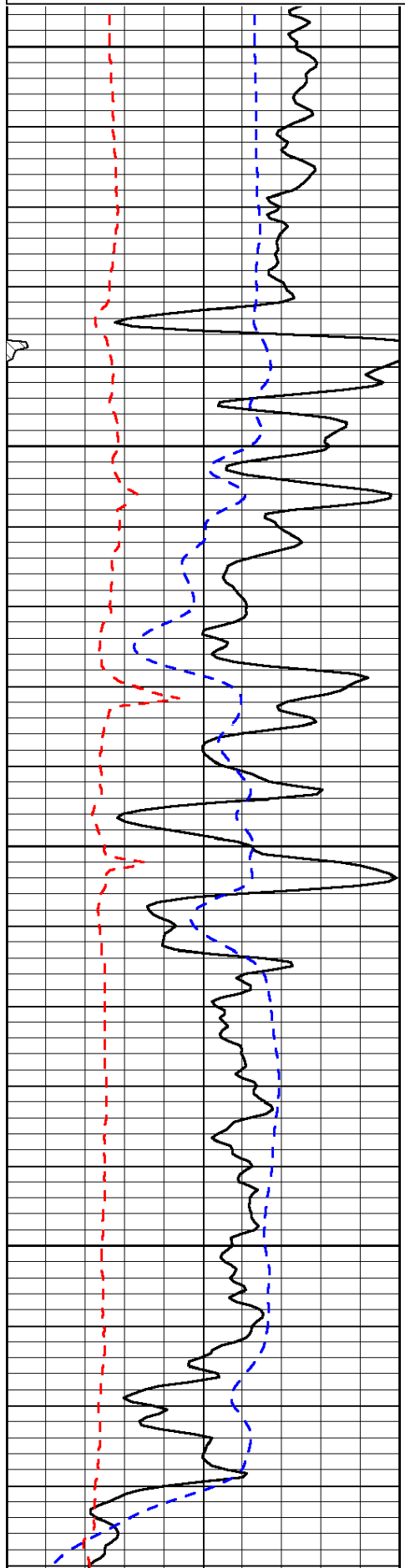
Grenola KS, E on Hwy 160 to 10 Rd,
 2 N, 1/2 W, N Into

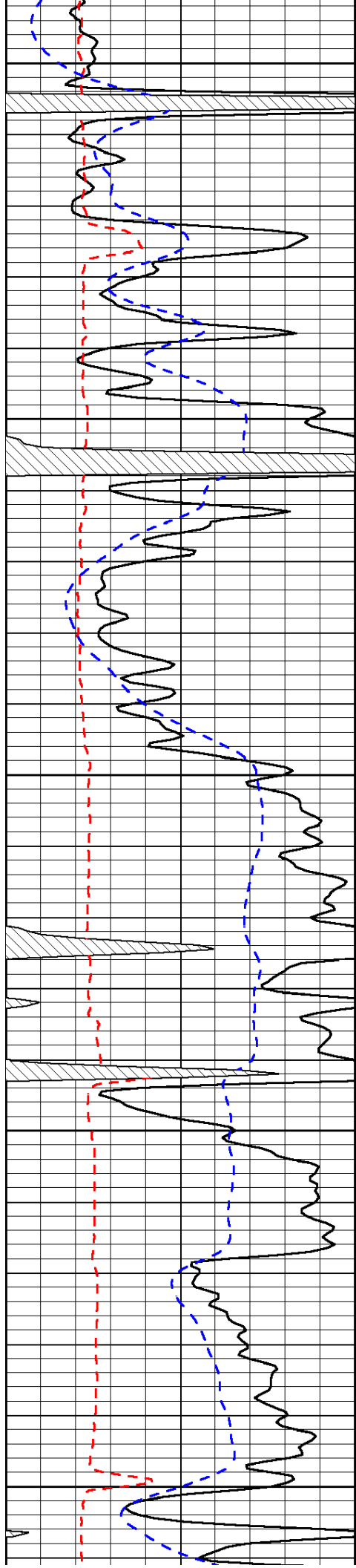
Database File: c:\warrior\data\lone wolf_cain #1\lonehd.db
 Dataset Pathname: dil/lonestk2
 Presentation Format: micro
 Dataset Creation: Fri Sep 05 21:10:15 2014
 Charted by: Depth in Feet scaled 1:240

0	Gamma Ray	150
6	Micro Log Caliper (GAPI)	16
-200	SP (mV)	0

0	Micro Inverse 1 X 1	40
0	Micro Normal 2"	40
15000	Line Weight	0

LSPD





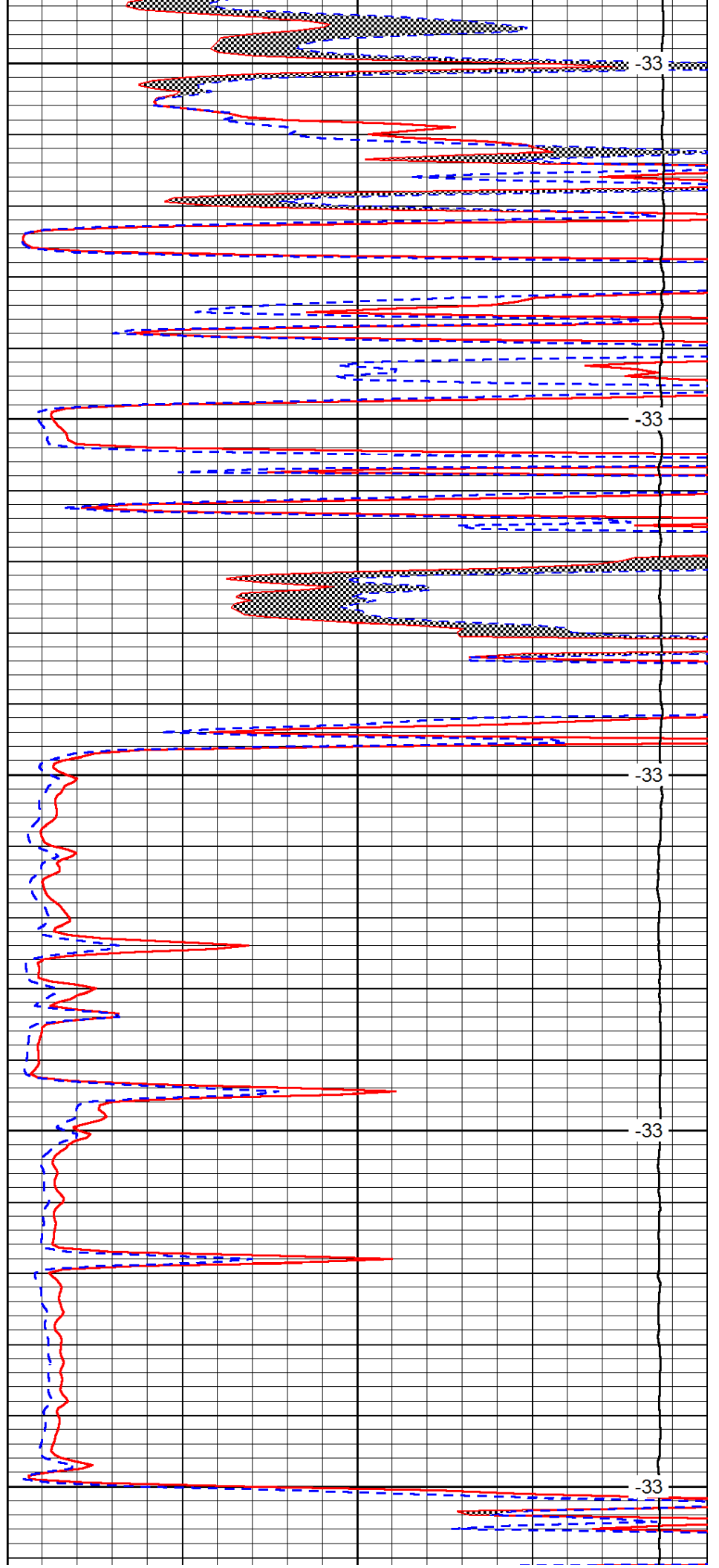
1700

1750

1800

1850

1900



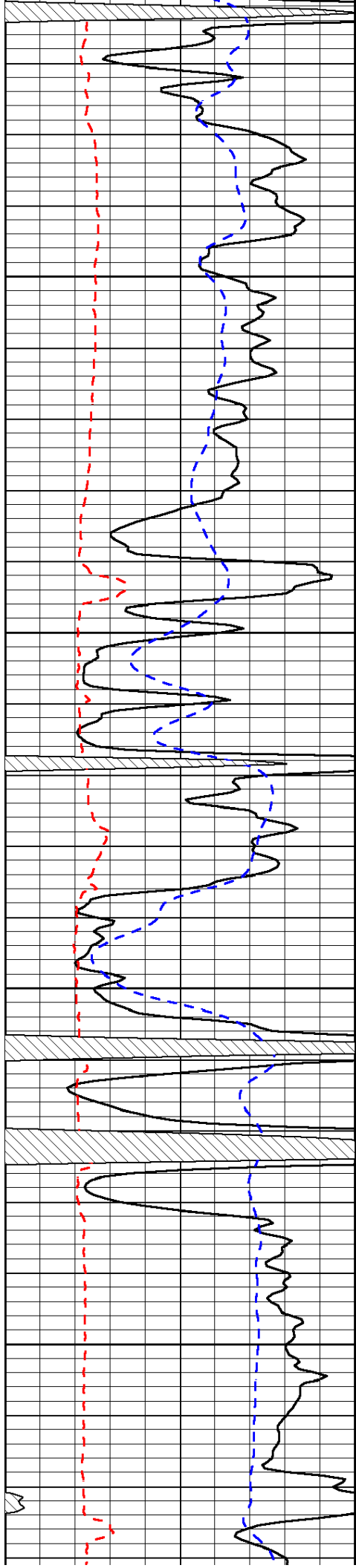
-33

-33

-33

-33

-33

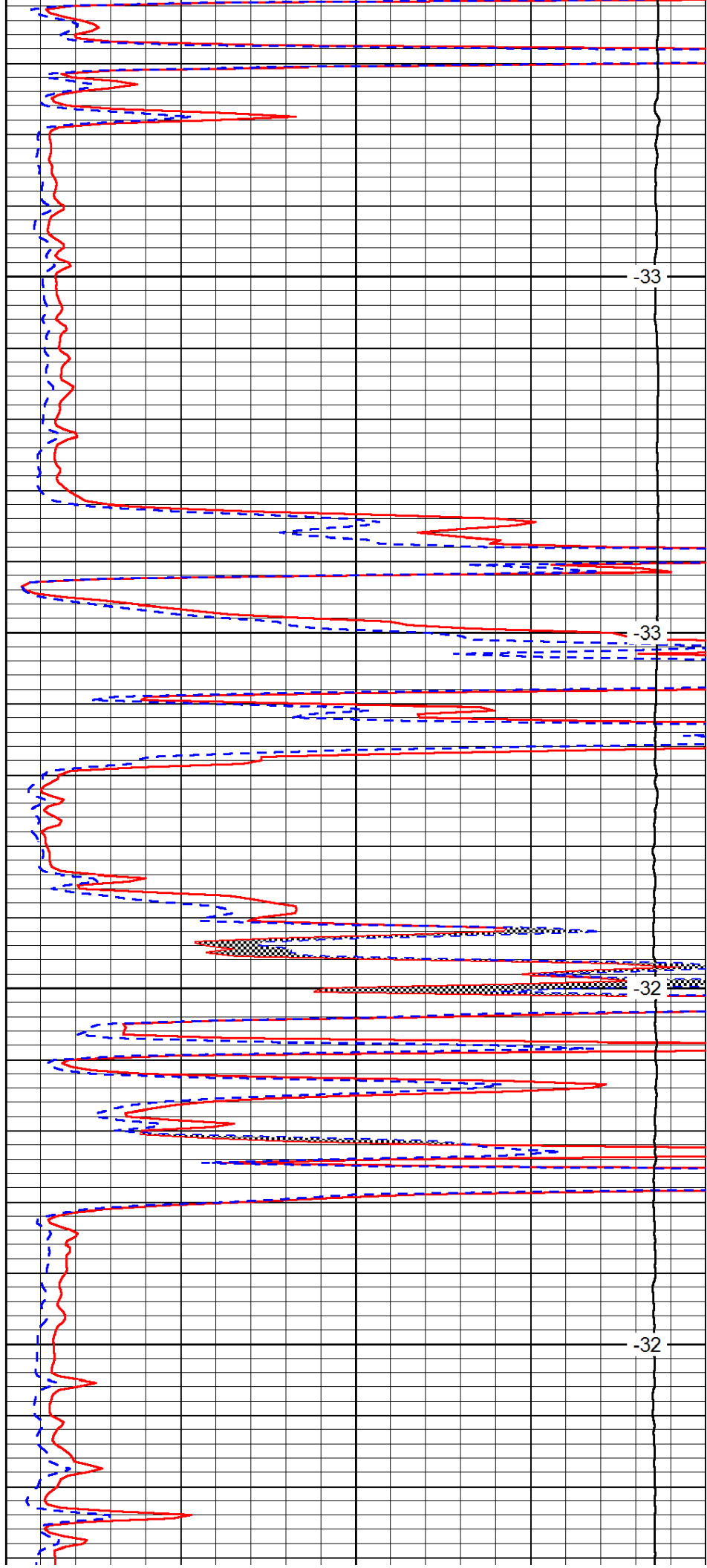


1950

2000

2050

2100

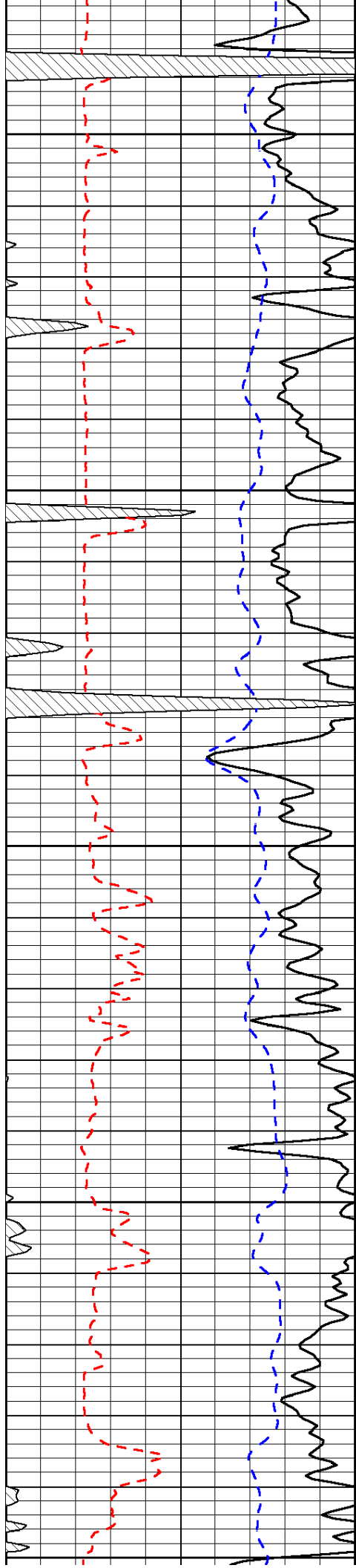


-33

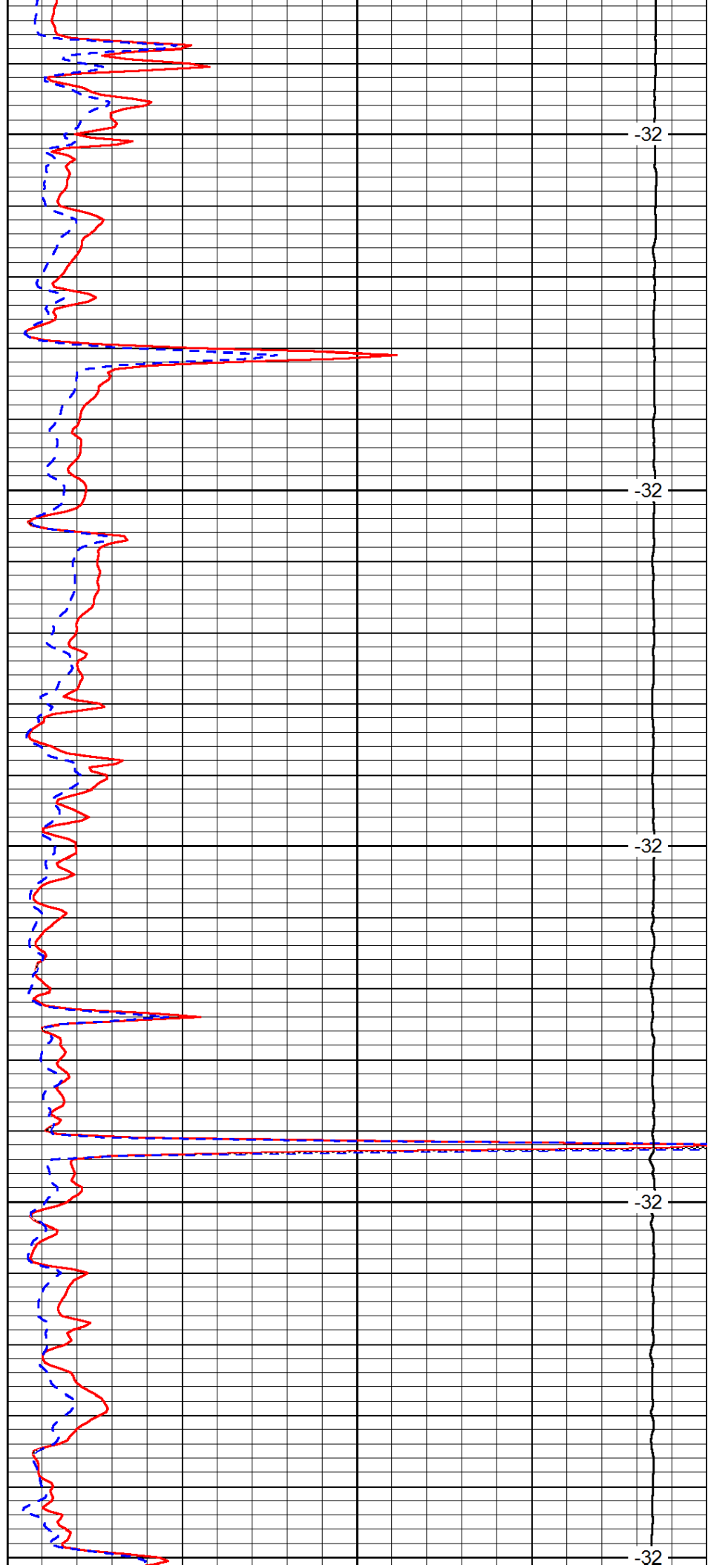
-33

-32

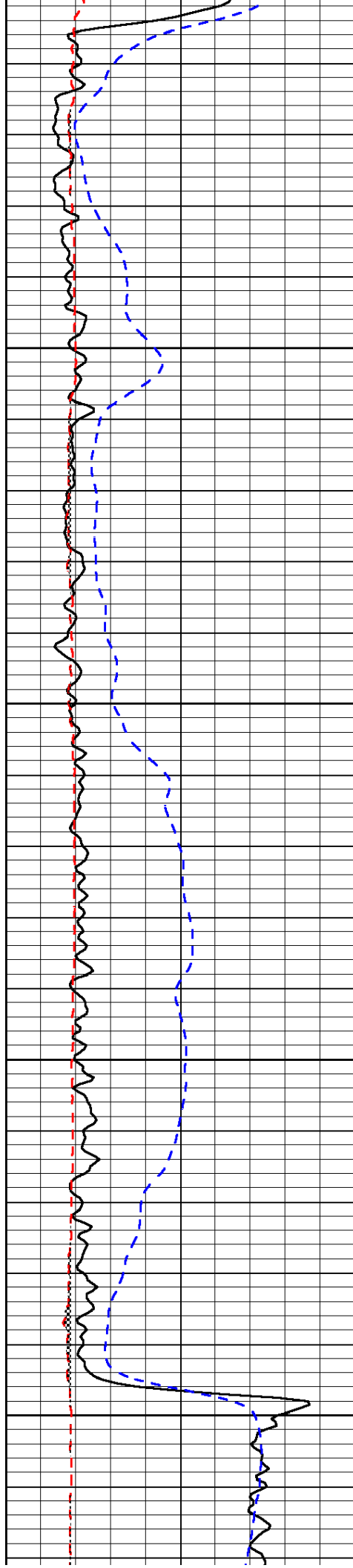
-32



2150
2200
2250
2300
2350



-32
-32
-32
-32
-32

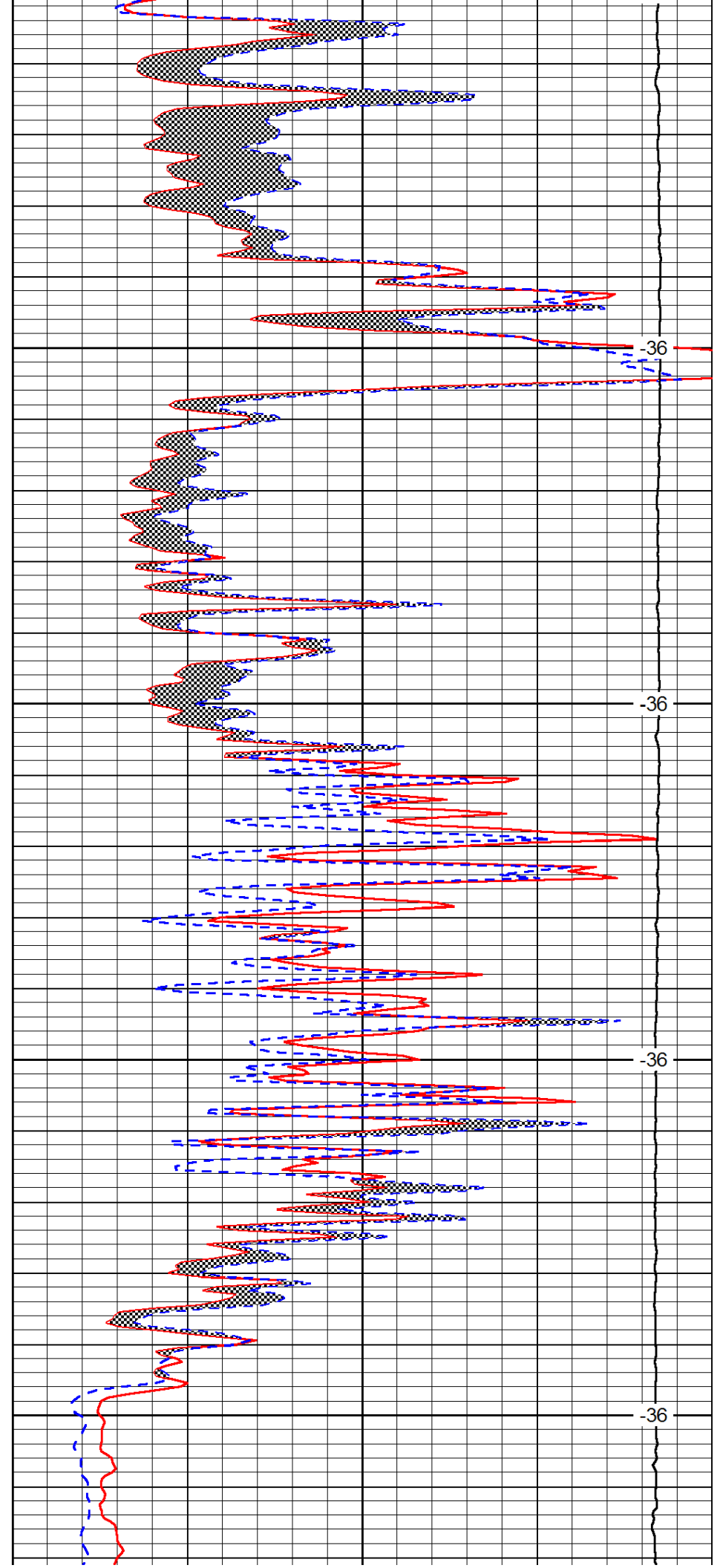


2400

2450

2500

2550

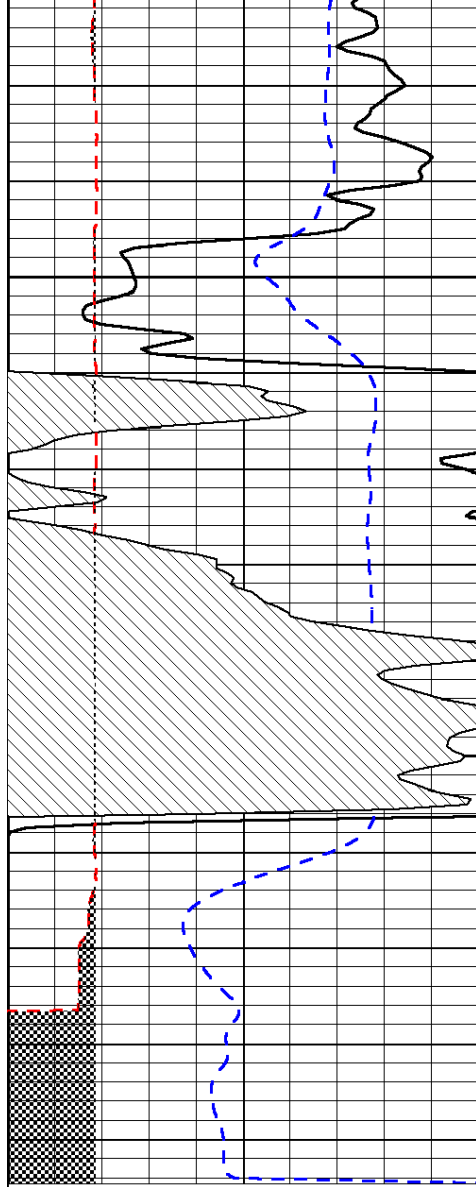


-36

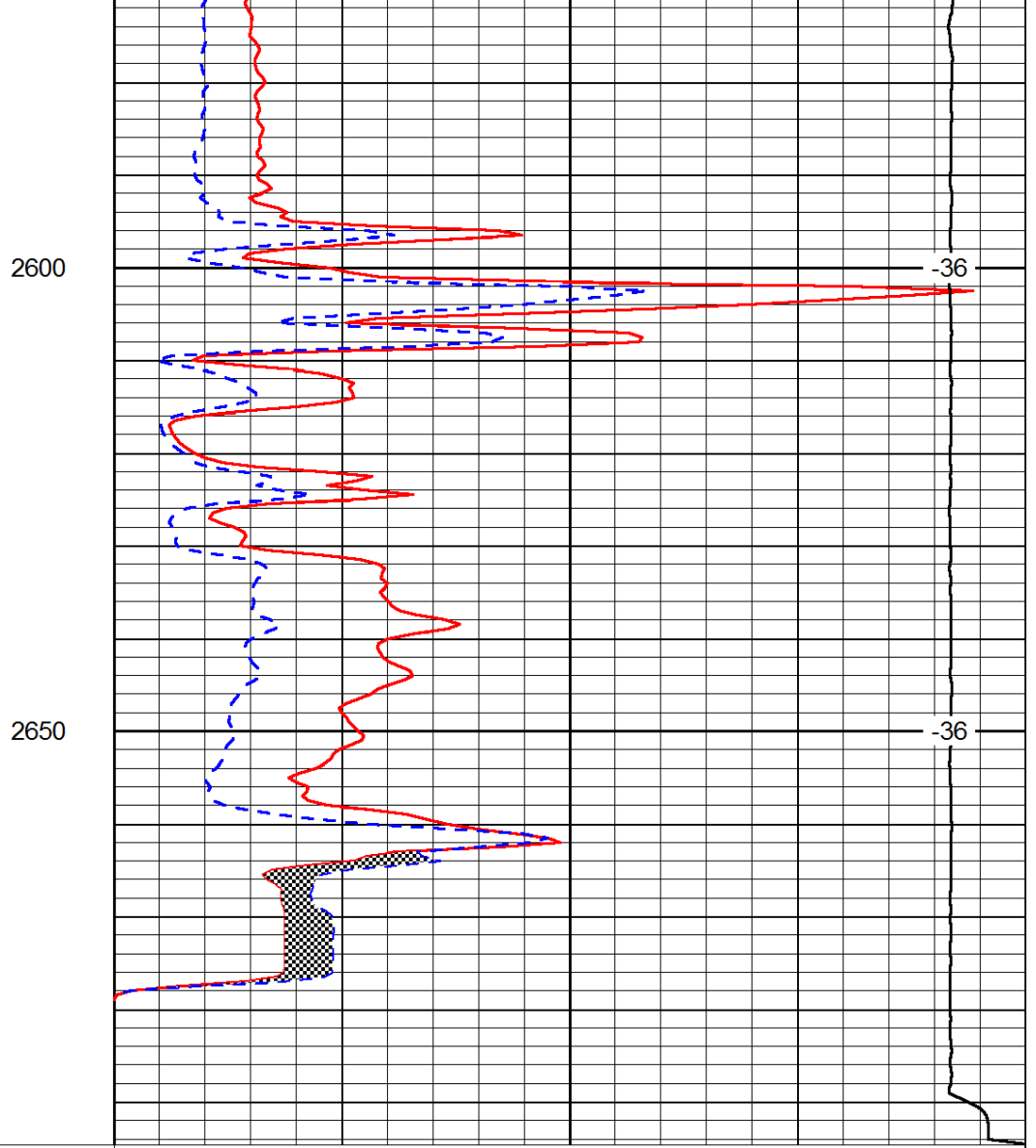
-36

-36

-36



0	Gamma Ray	150
6	Micro Log Caliper (GAPI)	16
-200	SP (mV)	0



0	Micro Inverse 1 X 1	40
0	Micro Normal 2"	40
15000	Line Weight	0

LSPD