



Pioneer Energy Services

## Dual Compensated Porosity Log

15-049-22,599-00-00

API No.

Company **Lone Wolf Oil**  
Well **Cain #1**  
Field **Love**  
County **Elk**

State **Kansas**

Location  
Sec: 36 Twp: 30S Rge: 9E

1980' FSL & 2970' FEL

Other Services  
DIL  
MEL

Permanent Datum Ground Level Elevation 1284  
Log Measured From Kelly Bushing 6 Ft. Above Perm. Datum  
Drilling Measured From Kelly Bushing

Elevation  
K.B. 1290  
D.F.  
G.L. 1284

Date	9/5/2014	
Run Number	One	
Type Log	CNL / CDL	
Depth Driller	2695	
Depth Logger	2689	
Bottom Logged Interval	2668	
Top Logged Interval	1500	
Type Fluid In Hole	Chemical	
Salinity, PPM CL	550	
Density	9.1	
Level	Full	
Max. Rec. Temp. F	103	
Operating Rig Time	3 Hours	
Equipment -- Location	10 Days	
Recorded By	C. Desaire	
Witnessed By	Joe Baker	

**Borehole Record**

**Casing Record**

Run No.	Bit	From	To	Size	Wgt.	From	To
1	12.25	00	42	8.625	24#	00	42
2	7.875	42	2695				

<<< Fold Here >>>

All interpretations are opinions based on inferences from electrical or other measurements and we cannot and do not guarantee the accuracy or correctness of any interpretation, and we shall not, except in the case of gross or willful negligence on our part, be liable or responsible for any loss, costs, damages, or expenses incurred or sustained by anyone resulting from any interpretation made by any of our officers, agents or employees. These interpretations are also subject to our general terms and conditions set out in our current Price Schedule.

**Comments**

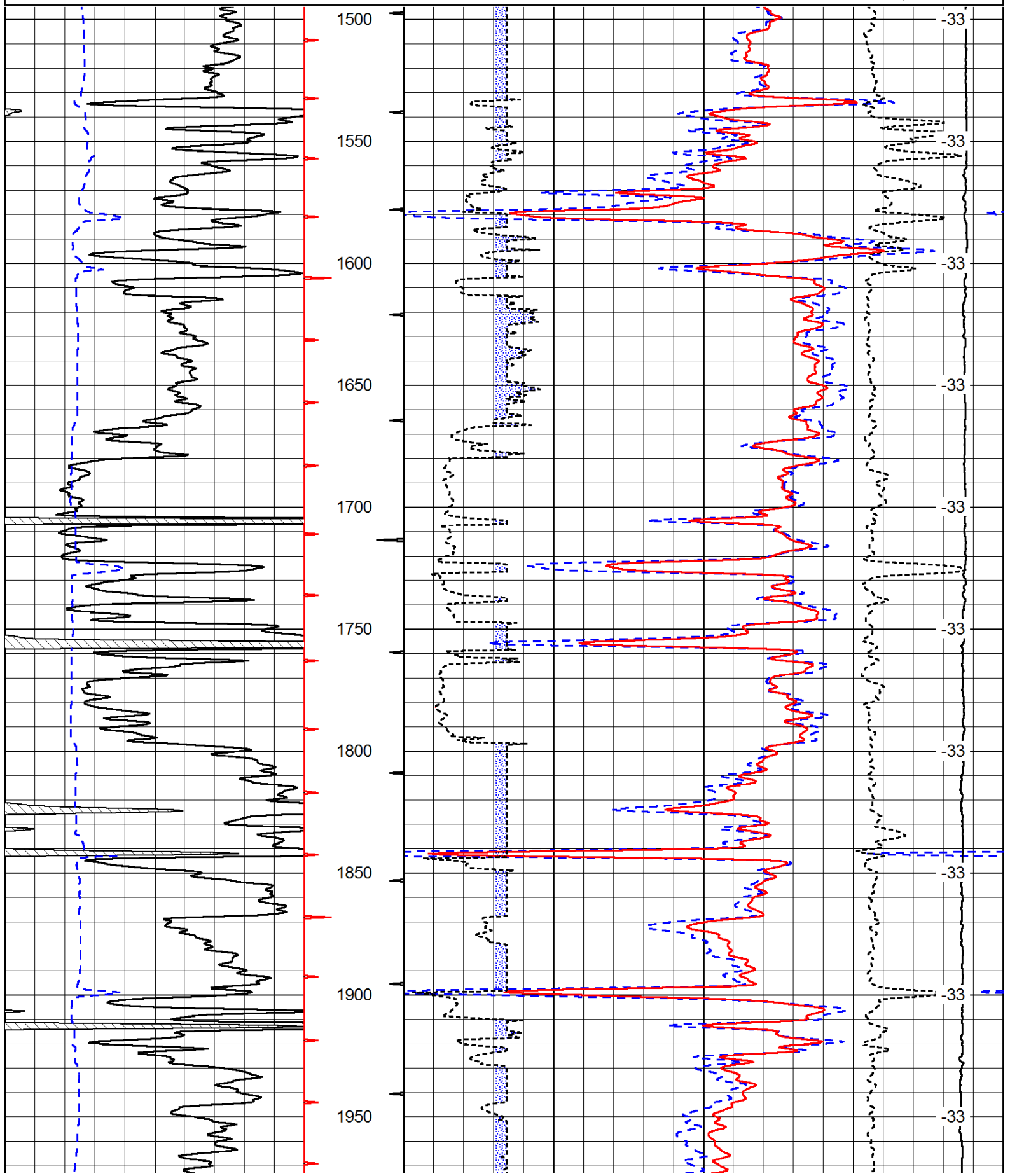
Thank you for using Pioneer Energy Services  
www.pioneer.com  
785 625 3858

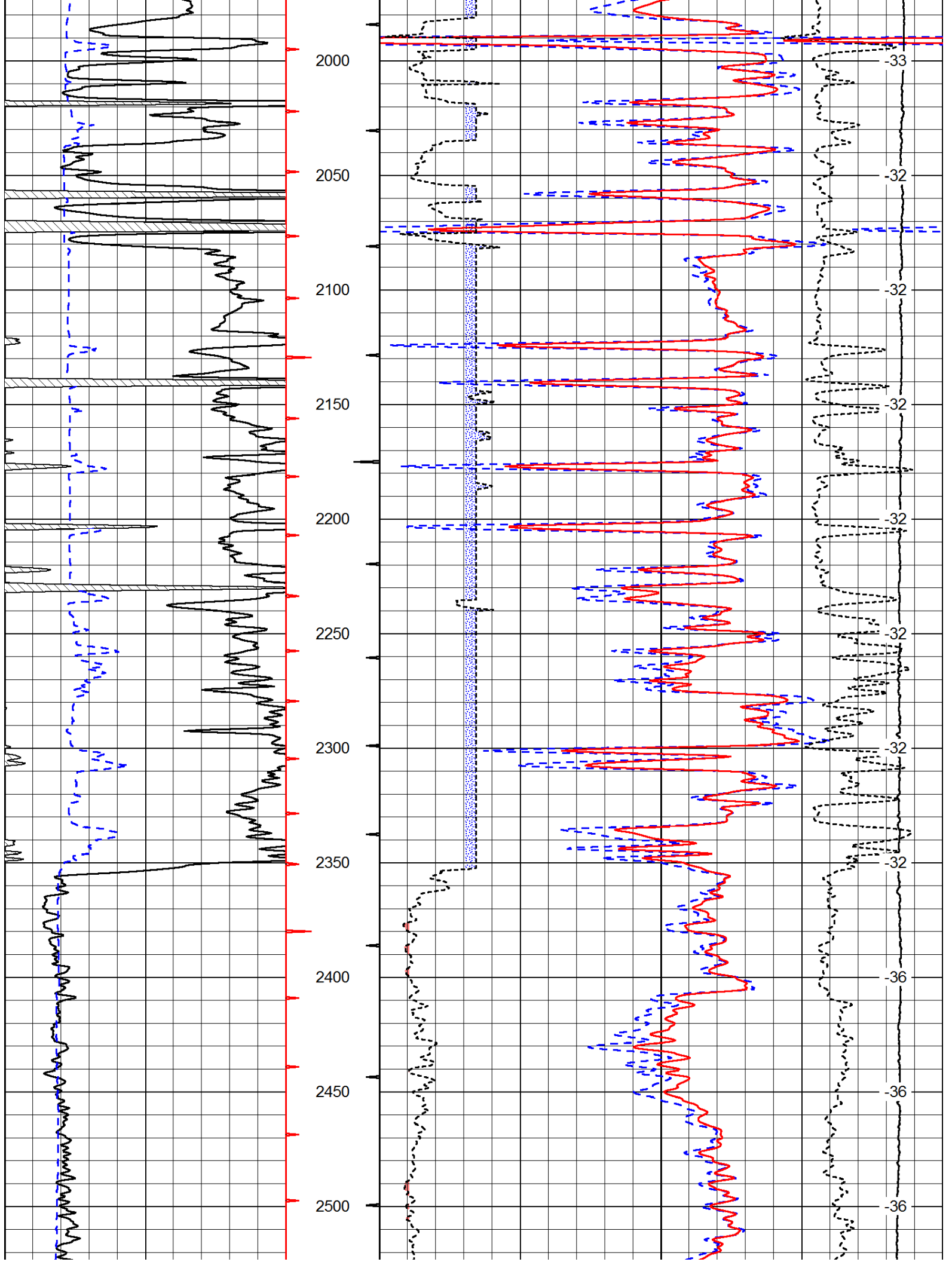
Grenola KS, E on Hwy 160 to 10 Rd,  
2 N, 1/2 W, N Into

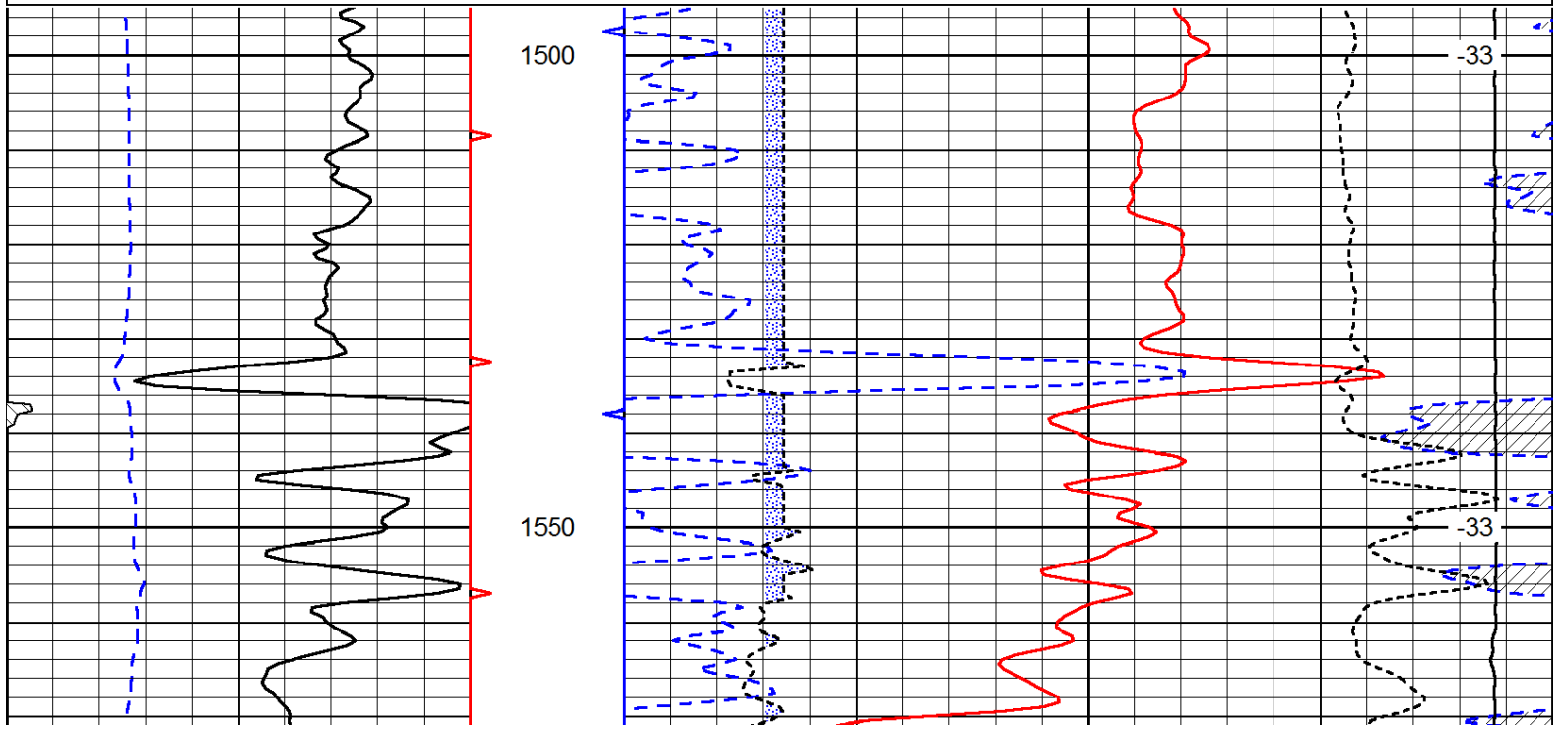
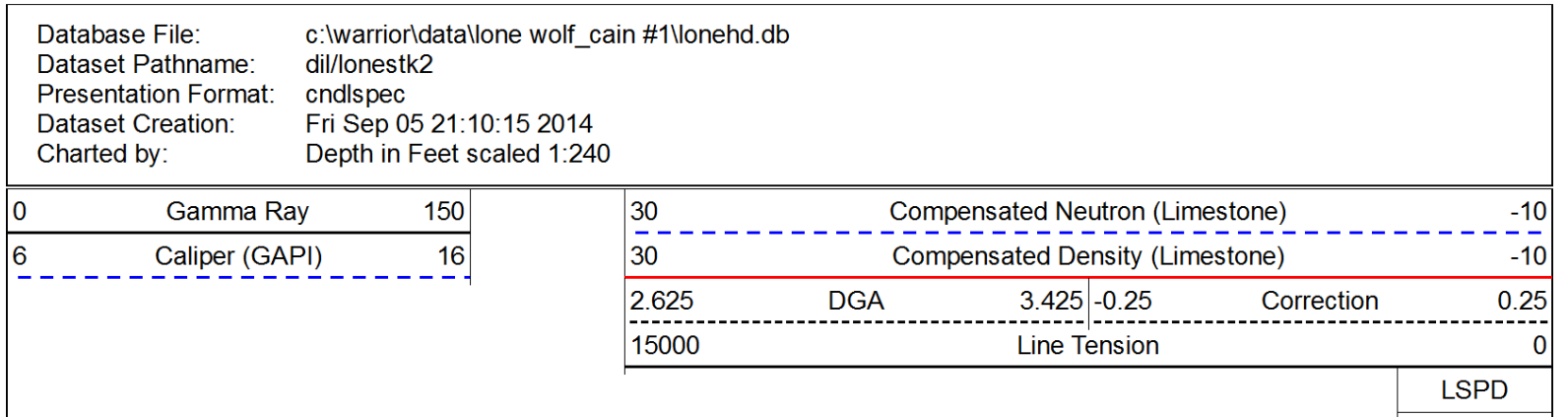
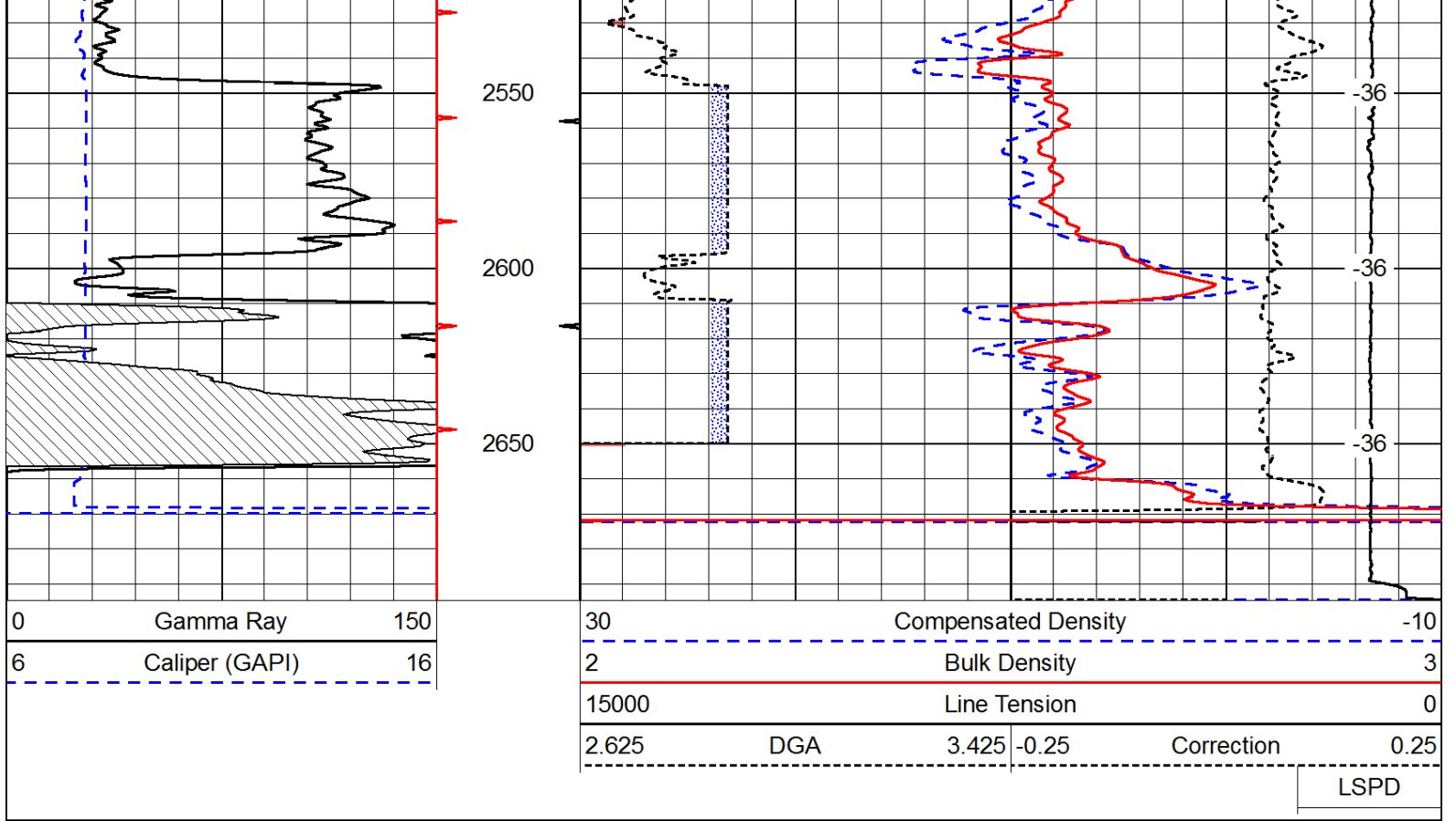
Database File: c:\warrior\data\lone wolf\_cain #1\lonehd.db  
Dataset Pathname: dil/lonestk2  
Presentation Format: cdl  
Dataset Creation: Fri Sep 05 21:10:15 2014  
Charted by: Depth in Feet scaled 1:600

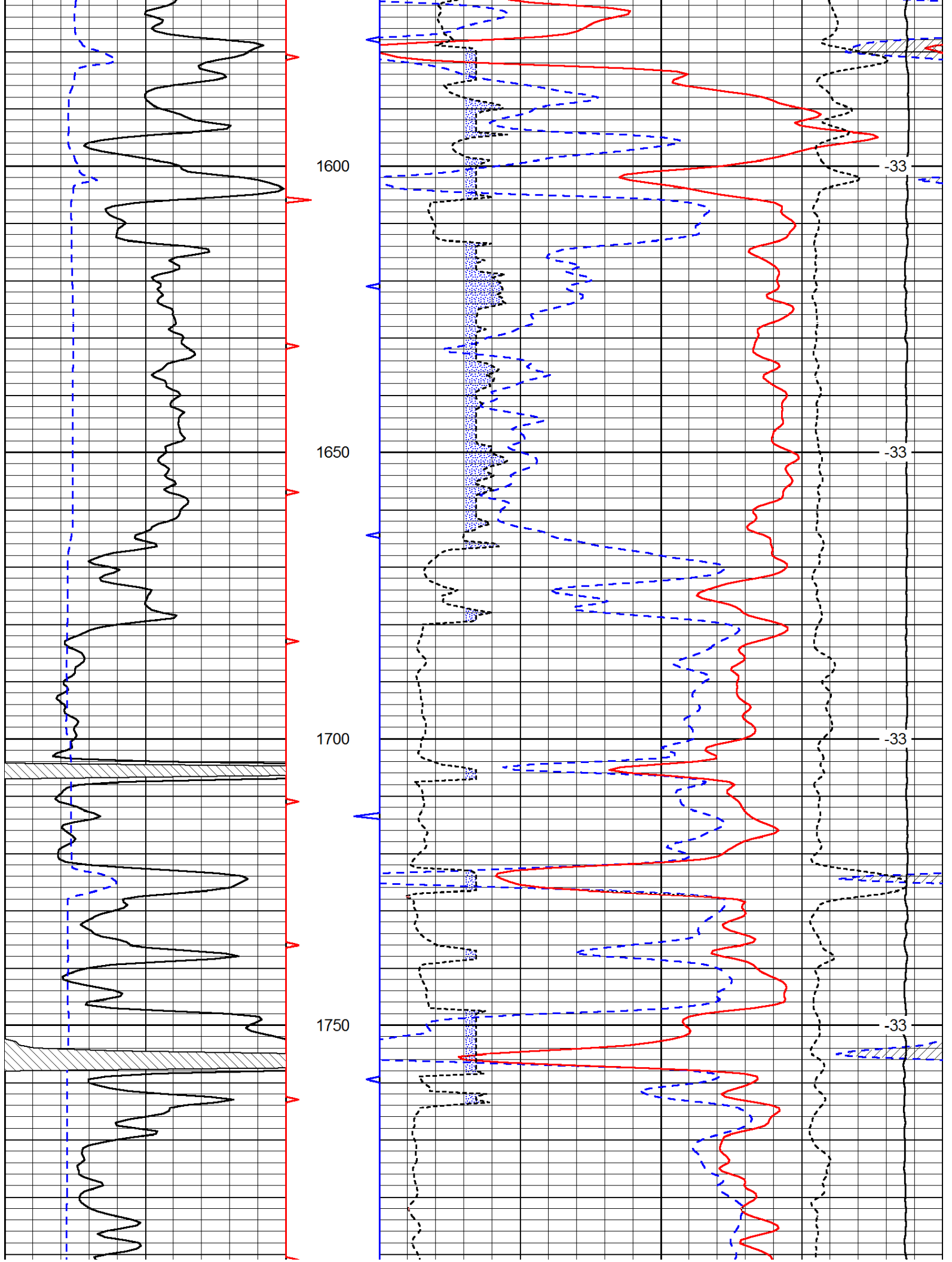
0	Gamma Ray	150
6	Caliper (GAPI)	16

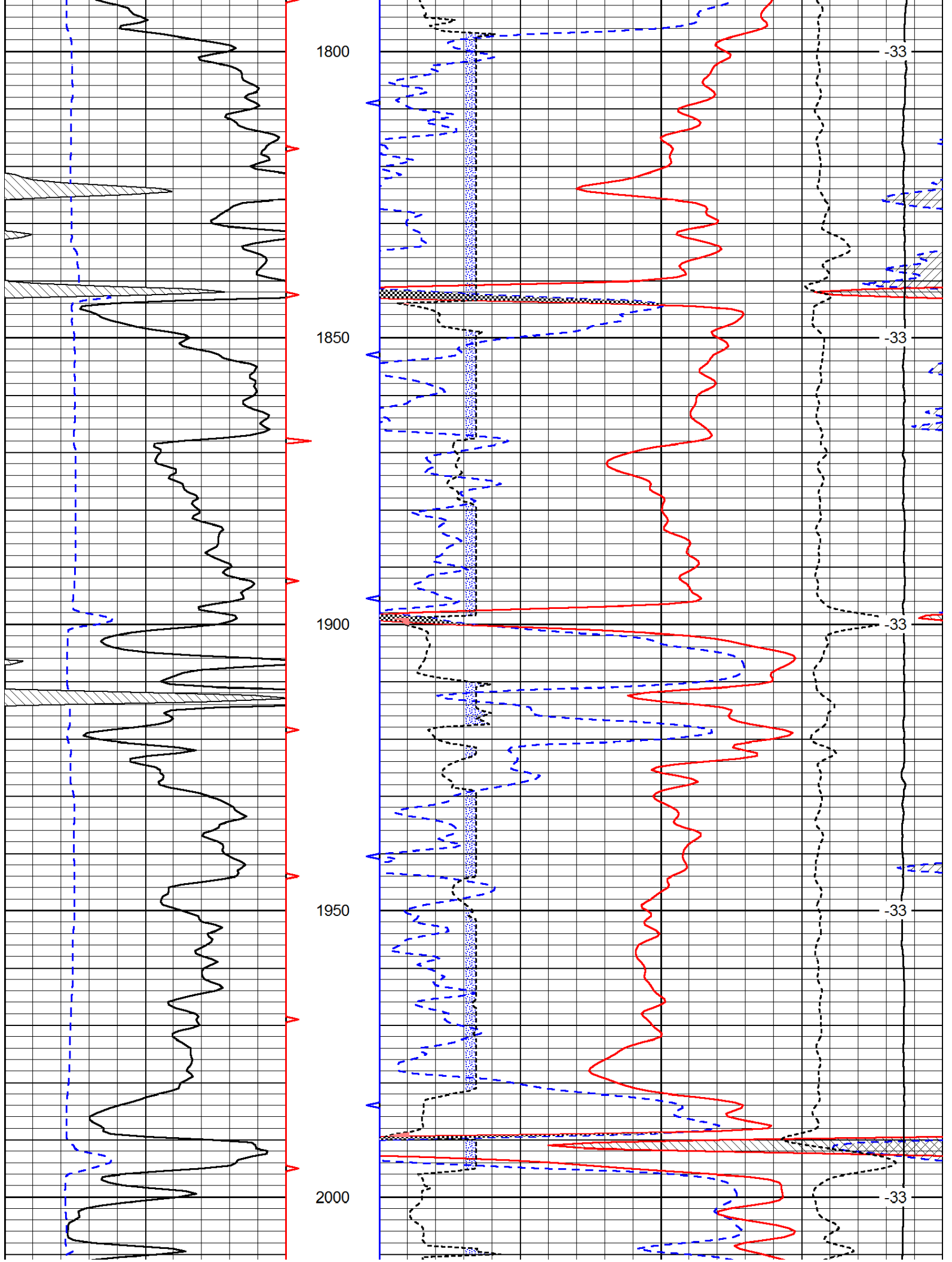
30	Compensated Density		-10
2	Bulk Density		3
15000	Line Tension		0
2.625	DGA	3.425	-0.25
			Correction
			0.25
LSPD			

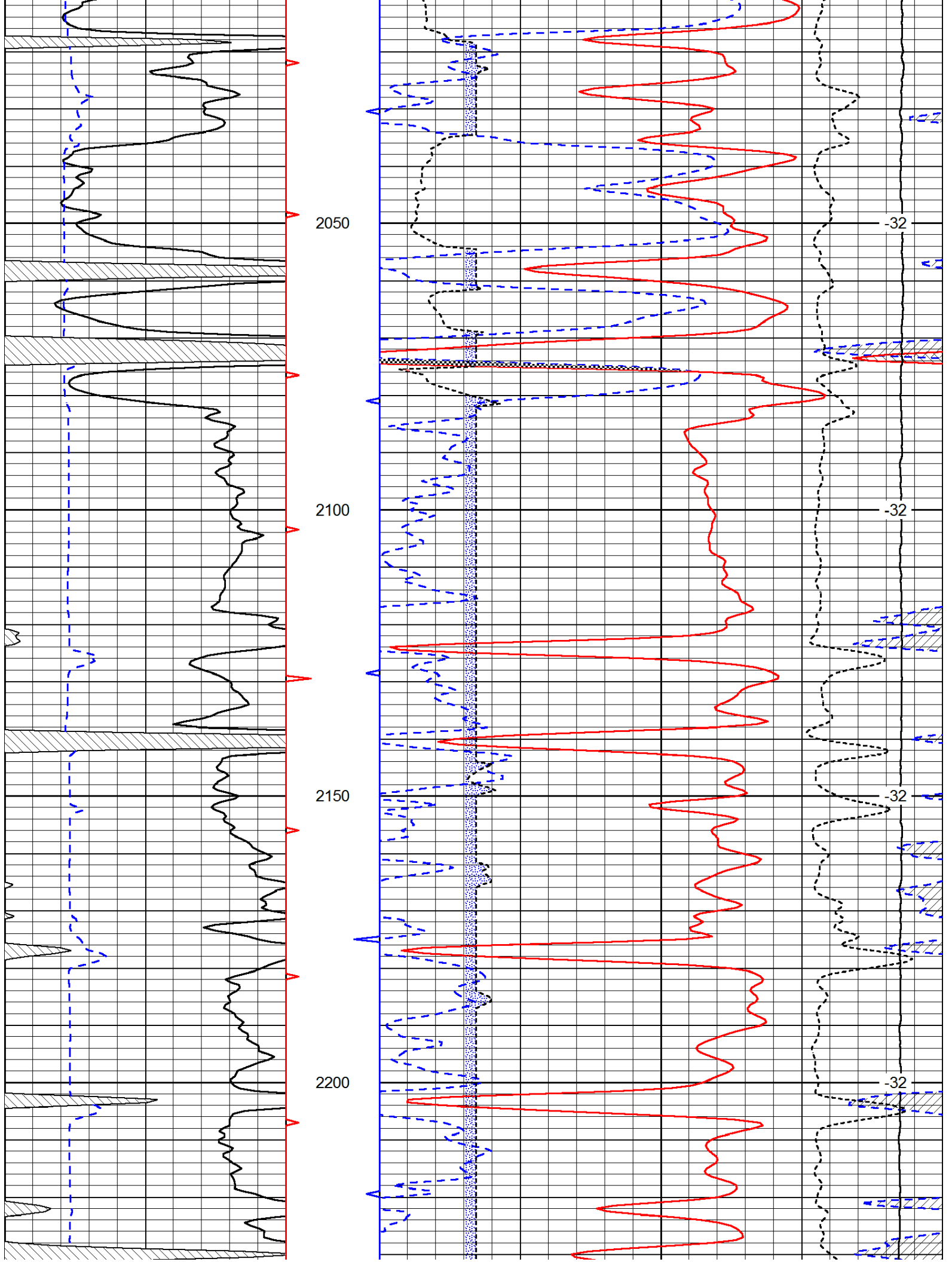


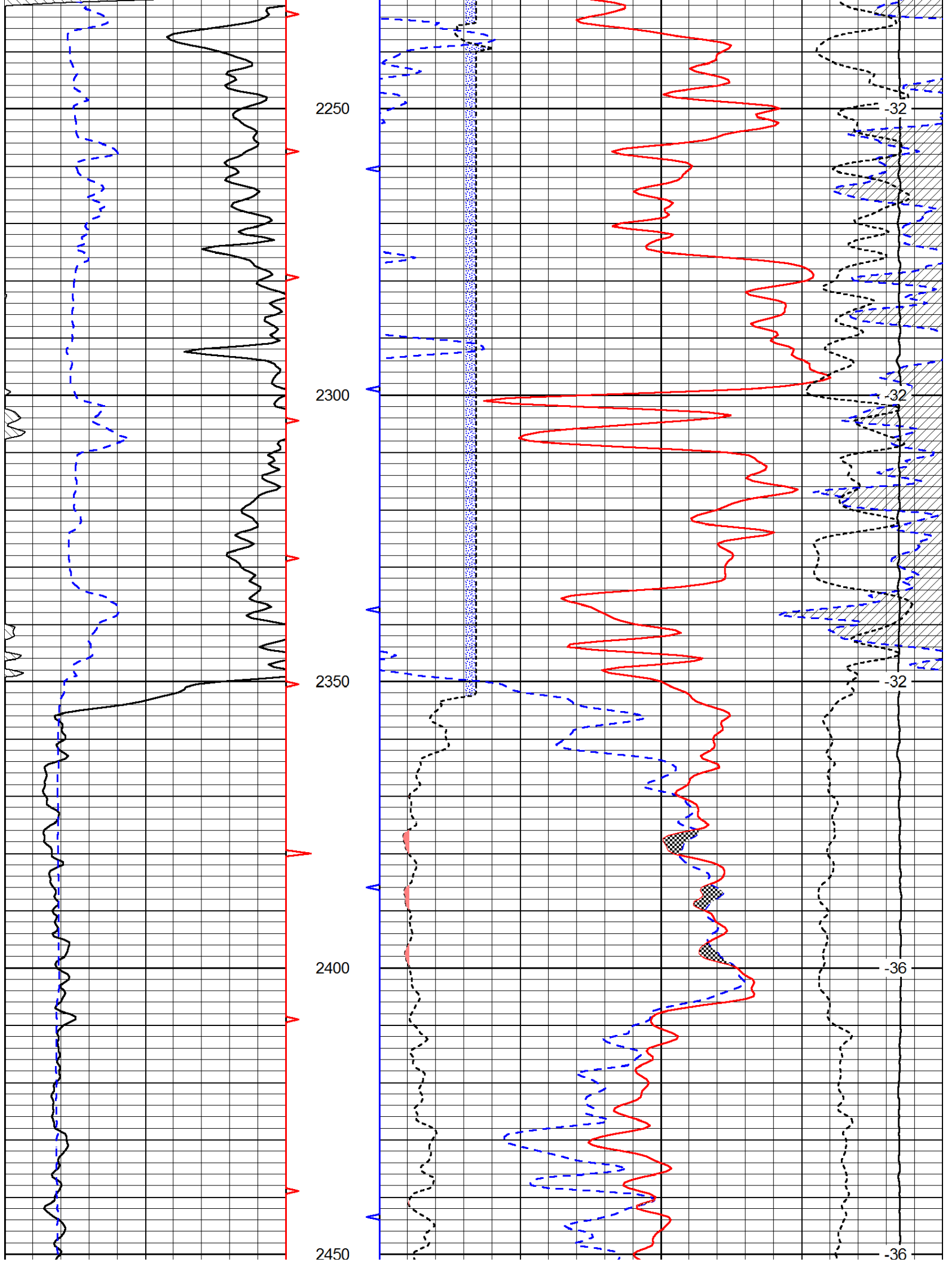


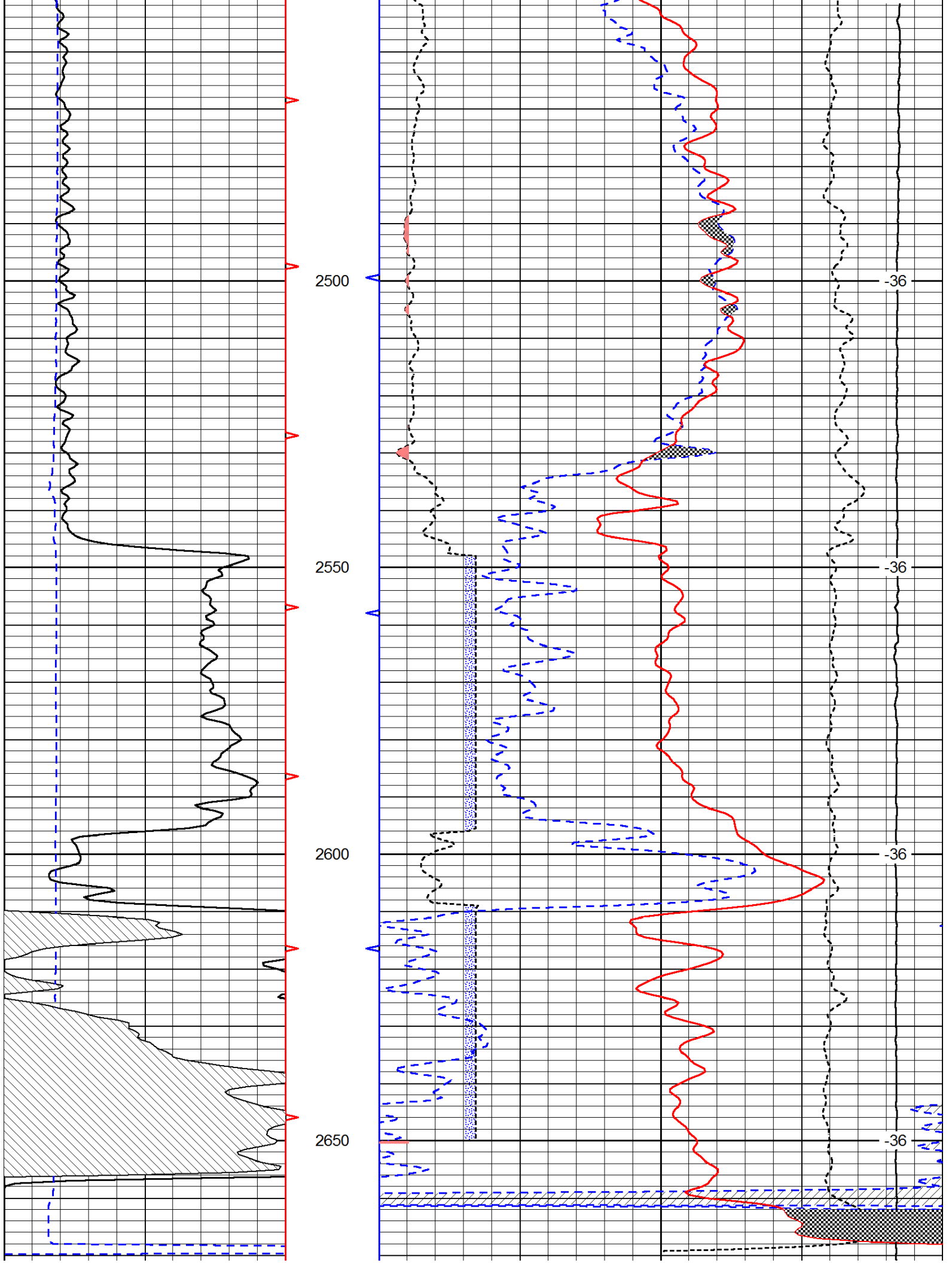


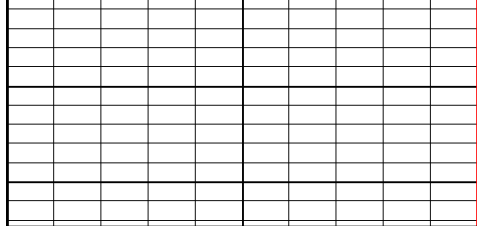






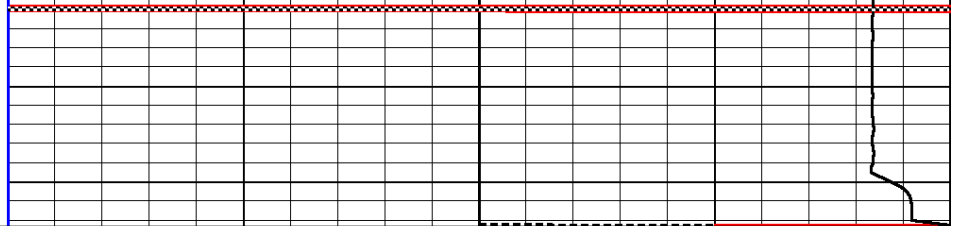






0	Gamma Ray	150
---	-----------	-----

6	Caliper (GAPI)	16
---	----------------	----



30	Compensated Neutron (Limestone)	-10
----	---------------------------------	-----

30	Compensated Density (Limestone)	-10
----	---------------------------------	-----

2.625	DGA	3.425	-0.25	Correction	0.25
-------	-----	-------	-------	------------	------

15000	Line Tension	0
-------	--------------	---

LSPD
------