



Pioneer Energy Services

Dual Induction Log

15-009-26,006-00-00

API No.

Company **F.G. Holl Company, LLC**
 Well **Schmidt Trust "A" # 1-11**
 Field **Wildcat**
 County **Barton** State **Kansas**

Location **S2-SE-NW
 2400' FNL & 2000' FWL**

Sec: **11** Twp: **20S** Rge: **15W**

Other Services
 CNL/CDL
 MEL/BHCS

Elevation

Permanent Datum **Ground Level** Elevation **1954**
 Log Measured From **Kelly Bushing** **8** Ft. Above Perm. Datum
 Drilling Measured From **Kelly Bushing**

K.B. 1962
 D.F. 1954
 G.L. 1954

Date	8/18/2014
Run Number	One
Depth Driller	3900
Depth Logger	3895
Bottom Logged Interval	3894
Top Log Interval	00
Casing Driller	8.625 @ 940
Casing Logger	937
Bit Size	7.875
Type Fluid in Hole	Chemical
Salinity, ppm CL	7,100
Density / Viscosity	9.6 43
pH / Fluid Loss	9.0 11.2
Source of Sample	Flowline
Rm @ Meas. Temp	.21 @ 85
Rmf @ Meas. Temp	.16 @ 85
Rmc @ Meas. Temp	.28 @ 85
Source of Rmf / Rmc	Charts
Rm @ BHT	.16 @ 115
Operating Rig Time	5 Hours
Max Rec. Temp. F	115
Equipment Number	15
Location	Hays
Recorded By	J. Hennickson
Witnessed By	Ryan Greenbaum

<<< Fold Here >>>

All interpretations are opinions based on inferences from electrical or other measurements and we cannot and do not guarantee the accuracy or correctness of any interpretation, and we shall not, except in the case of gross or willful negligence on our part, be liable or responsible for any loss, costs, damages, or expenses incurred or sustained by anyone resulting from any interpretation made by any of our officers, agents or employees. These interpretations are also subject to our general terms and conditions set out in our current Price Schedule.

Comments

Thank you for using Pioneer Energy Services
www.pioneerenergy.com
 785 625 3858

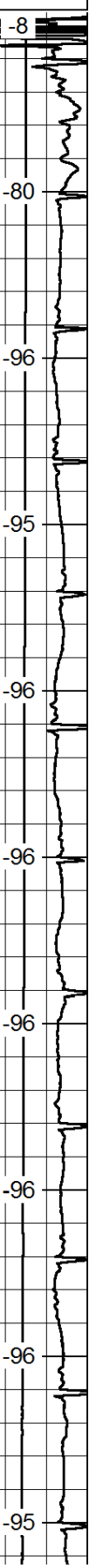
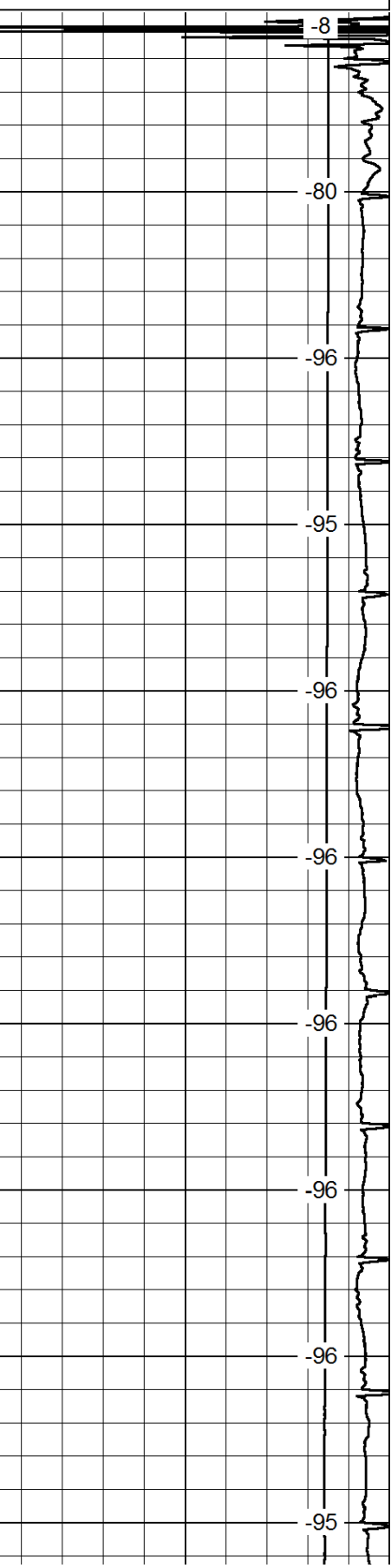
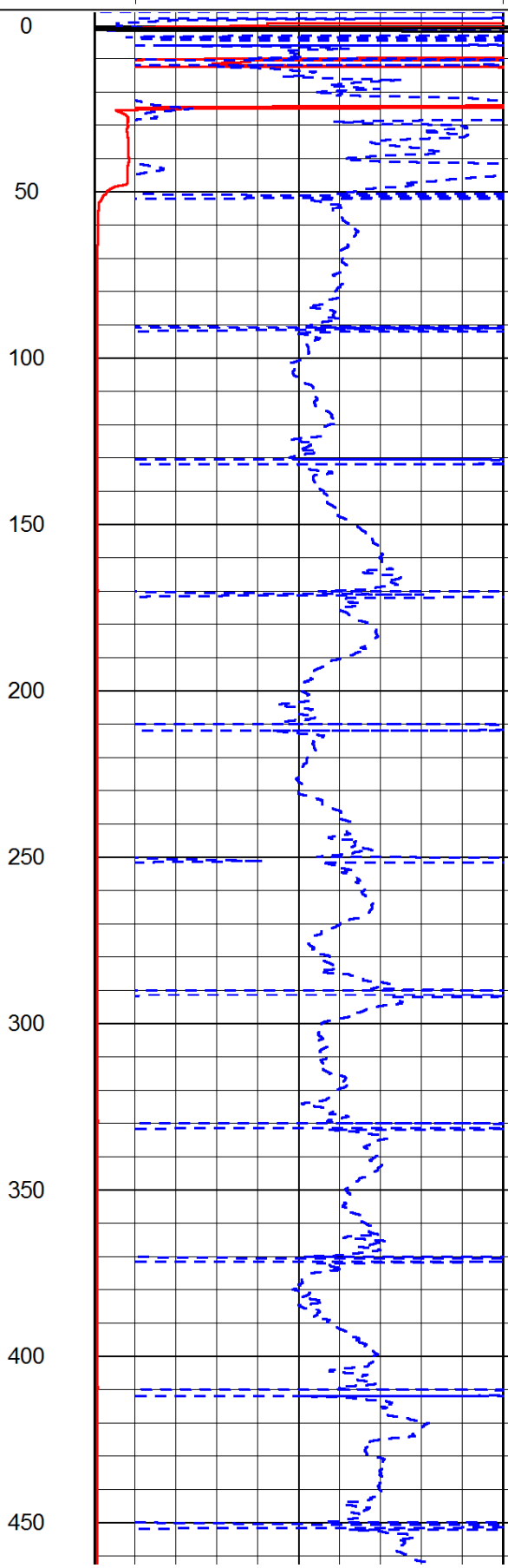
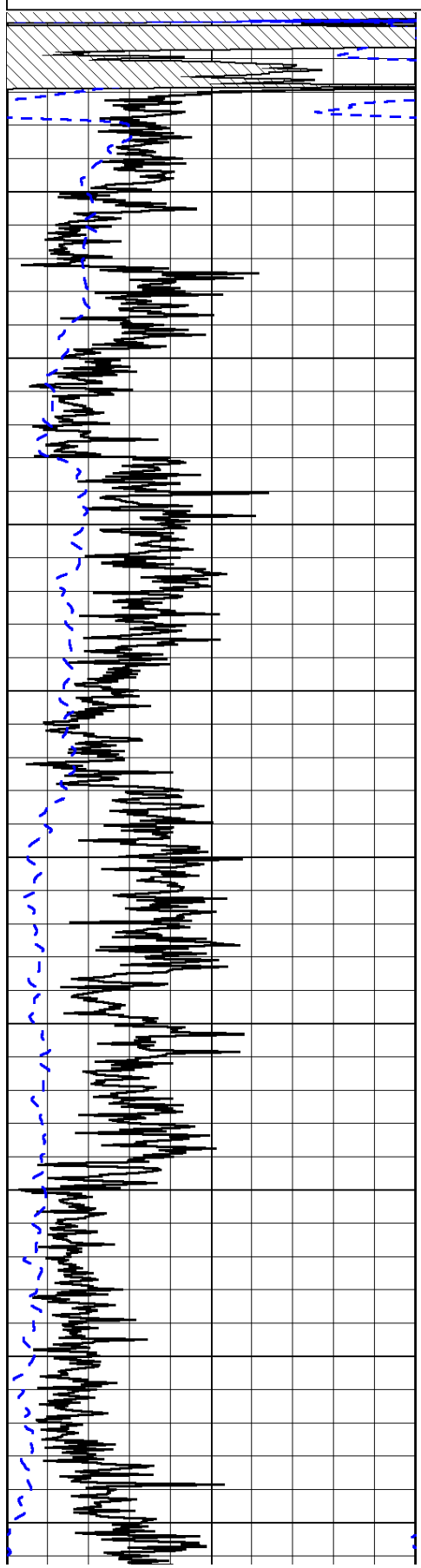
Great Bend Kansas
 West on HWY 56 to SW 30 Rd, 5 West to 100 Rd, 1/2 North, East Into

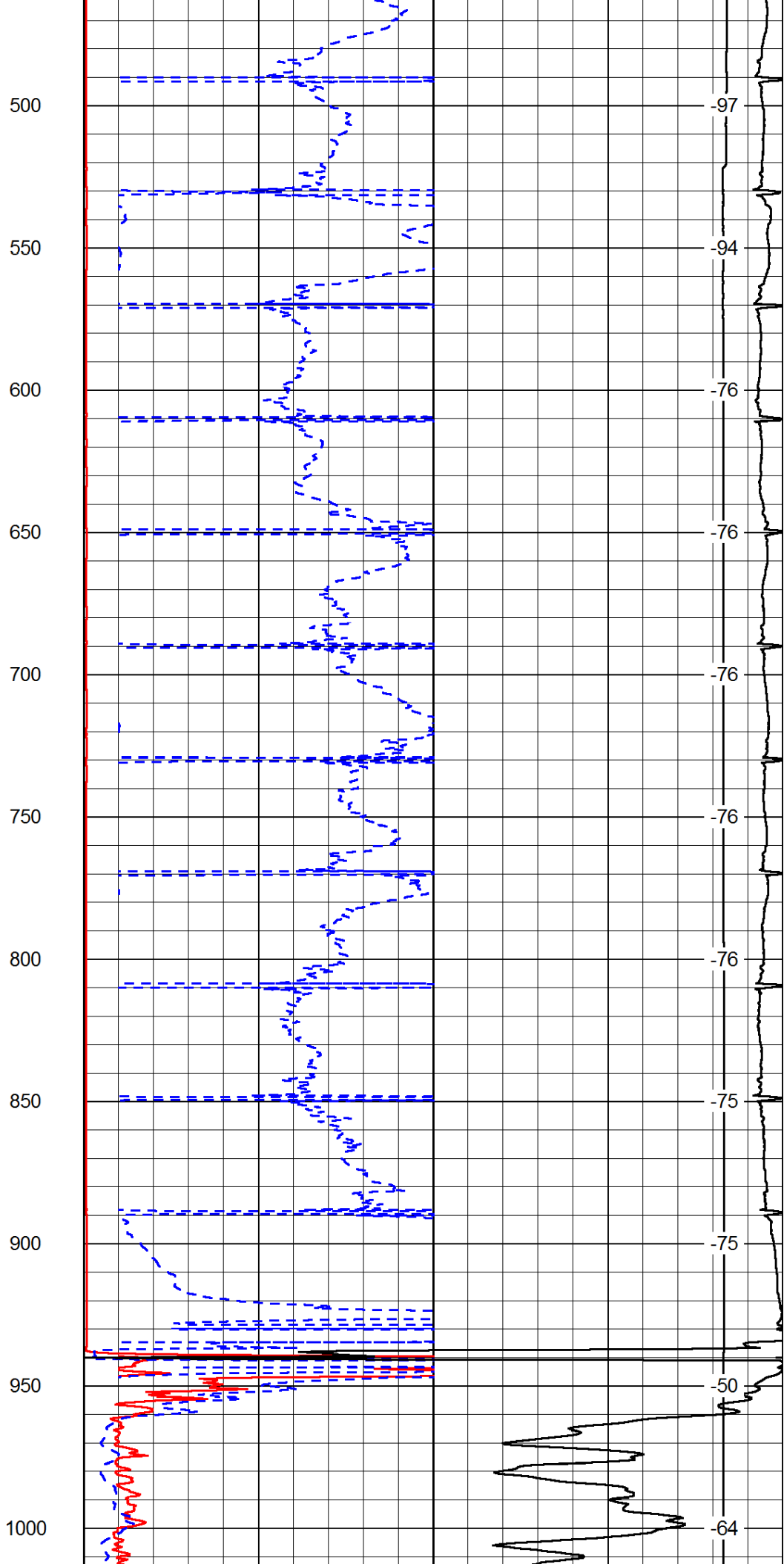
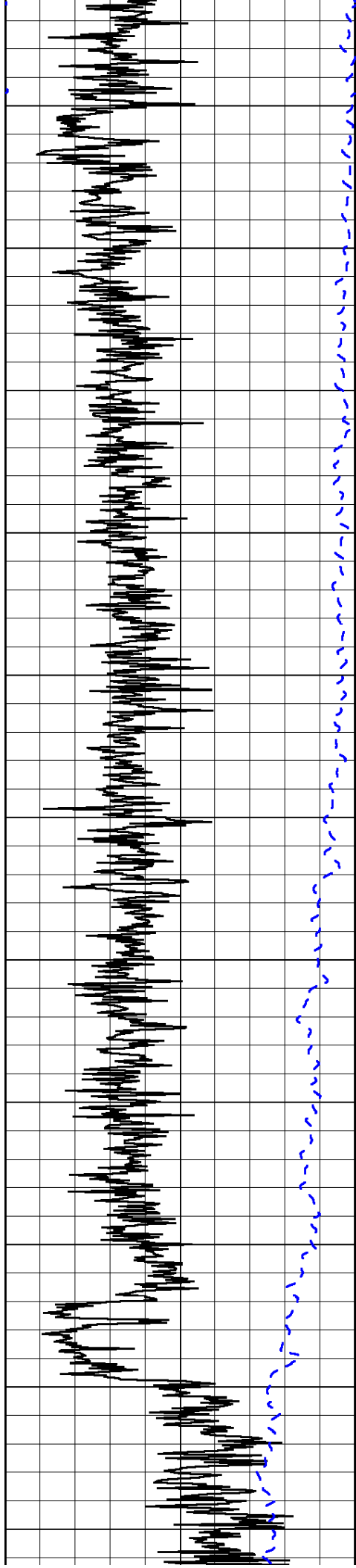
Database File: c:\warrior\data\fg holl_schmidt trust a # 1-11\fg_holl_schmidt_trust_a_1_11hd.db
 Dataset Pathname: DIL\fgstk
 Presentation Format: dil2in
 Dataset Creation: Mon Aug 18 21:26:43 2014
 Charted by: Depth in Feet scaled 1:600

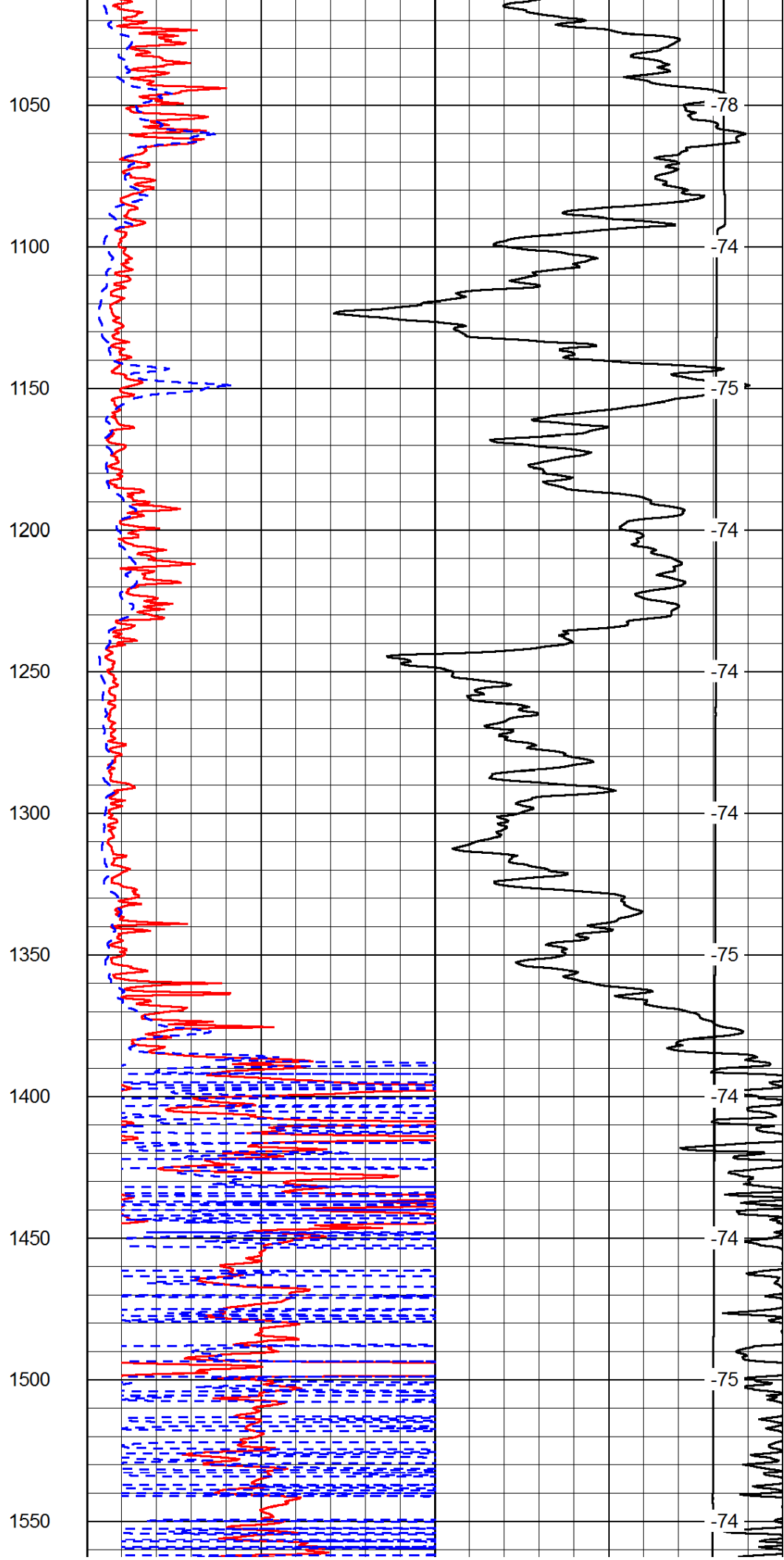
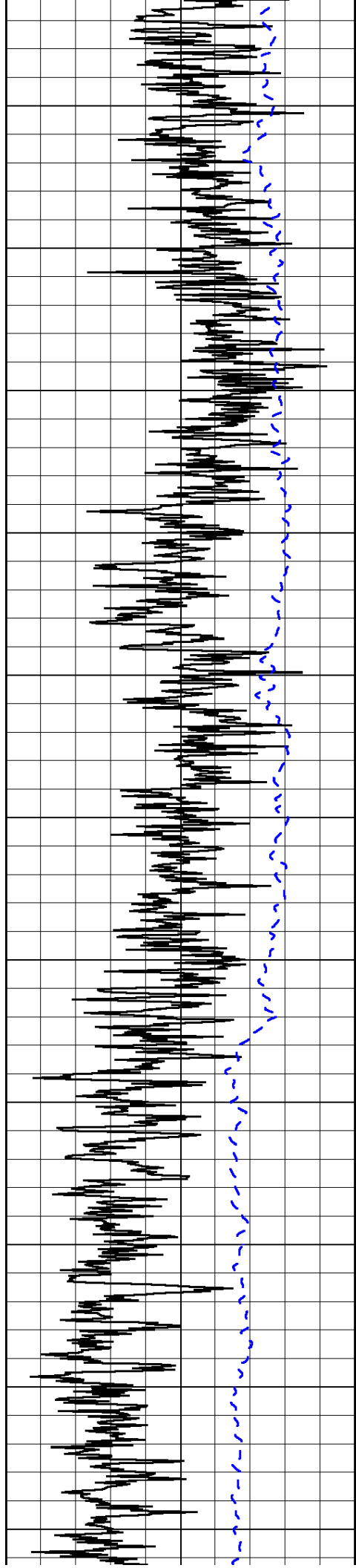
0	Gamma Ray	150
-200	SP (mV)	0

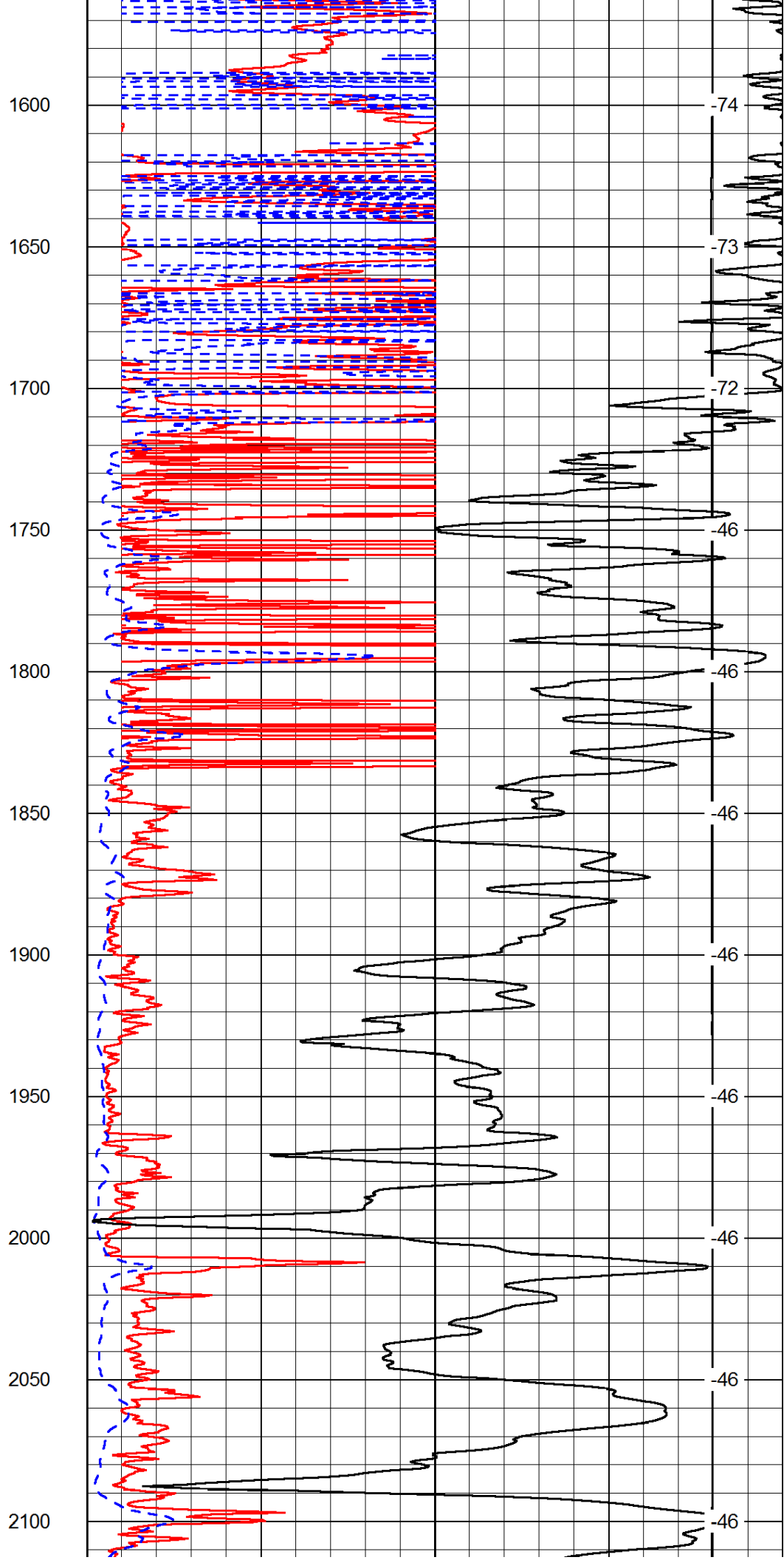
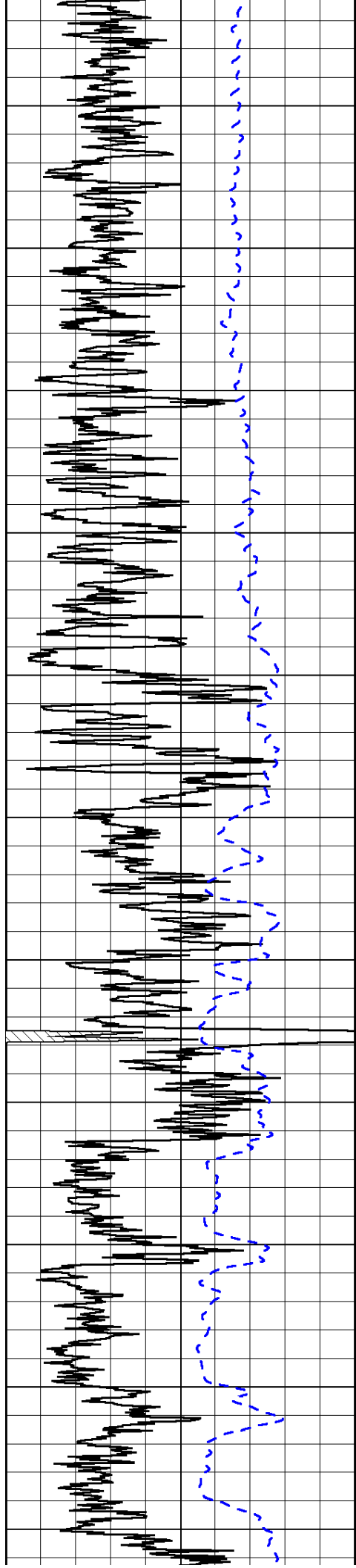
0	Shallow Resistivity	50
0	Deep Resistivity	50
1000	Conductivity	0
15000	Line Tension	0

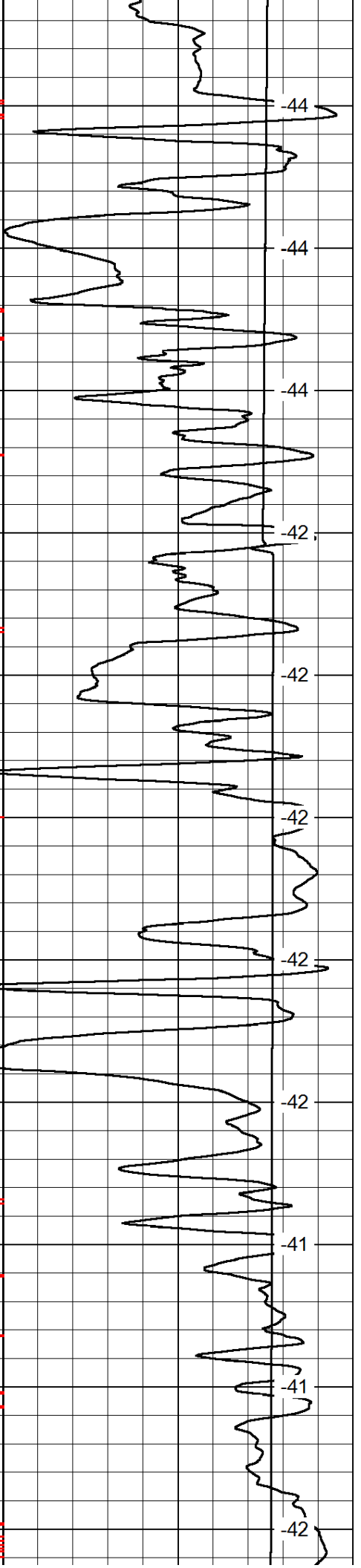
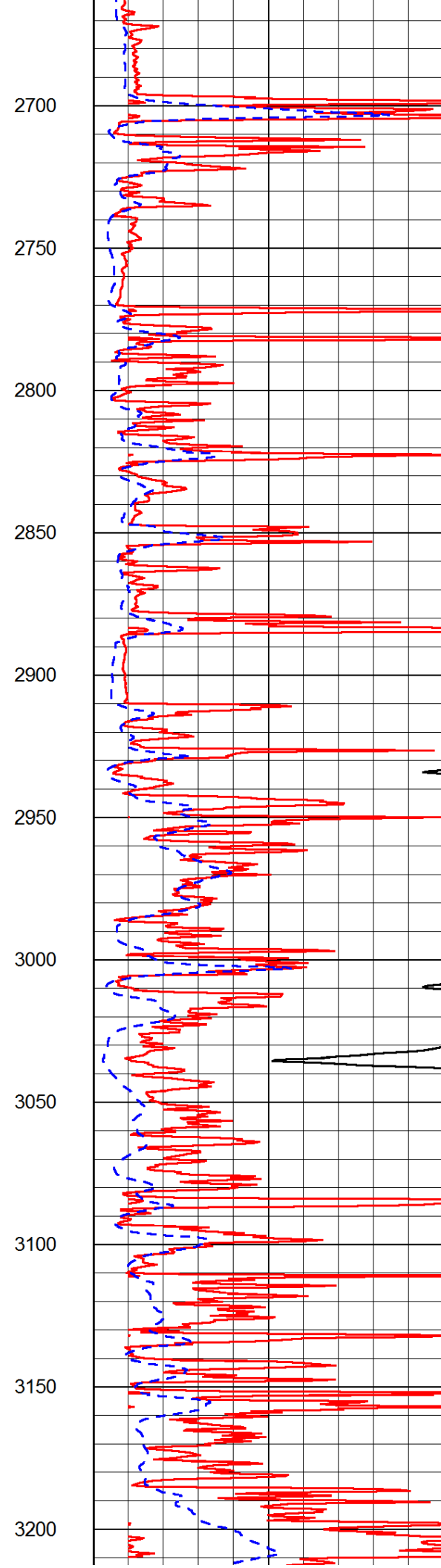
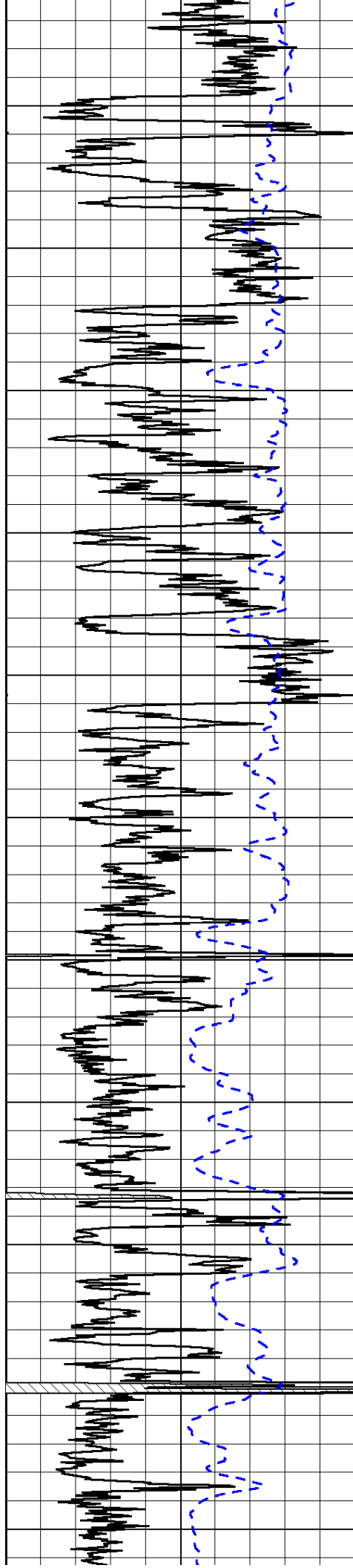
LSPD

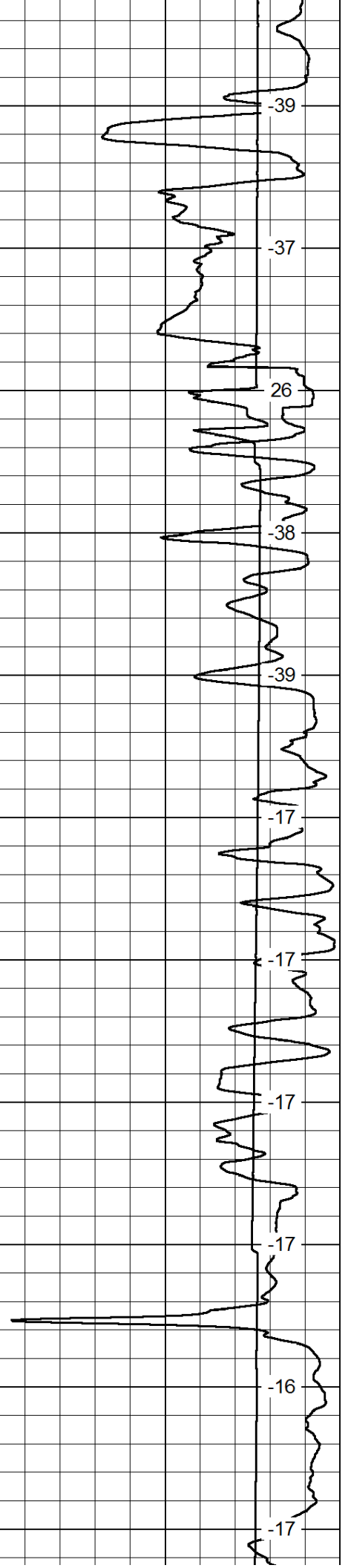
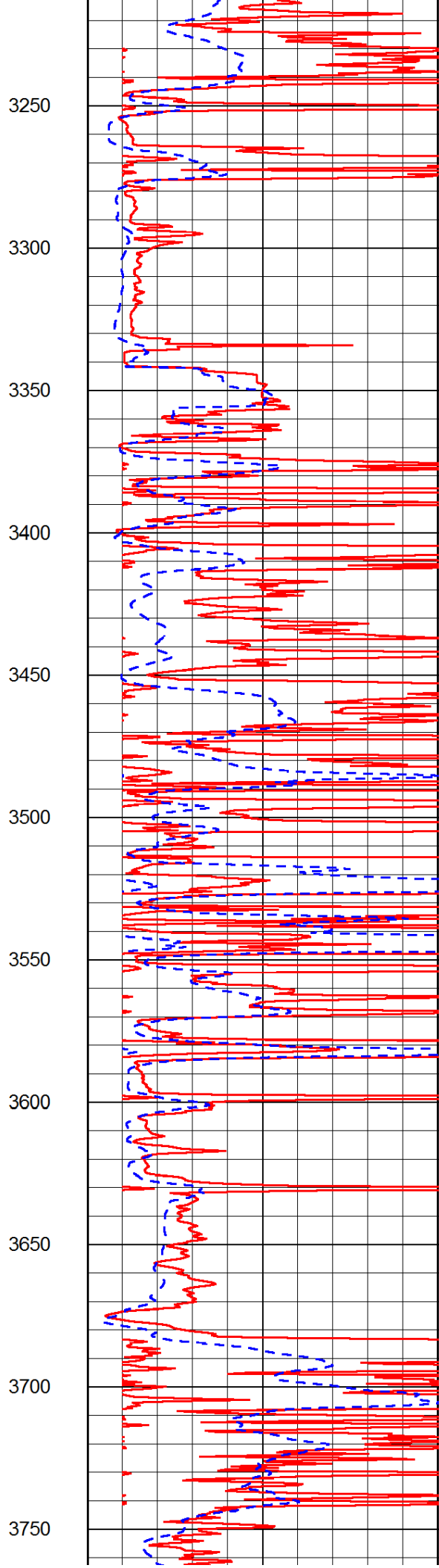
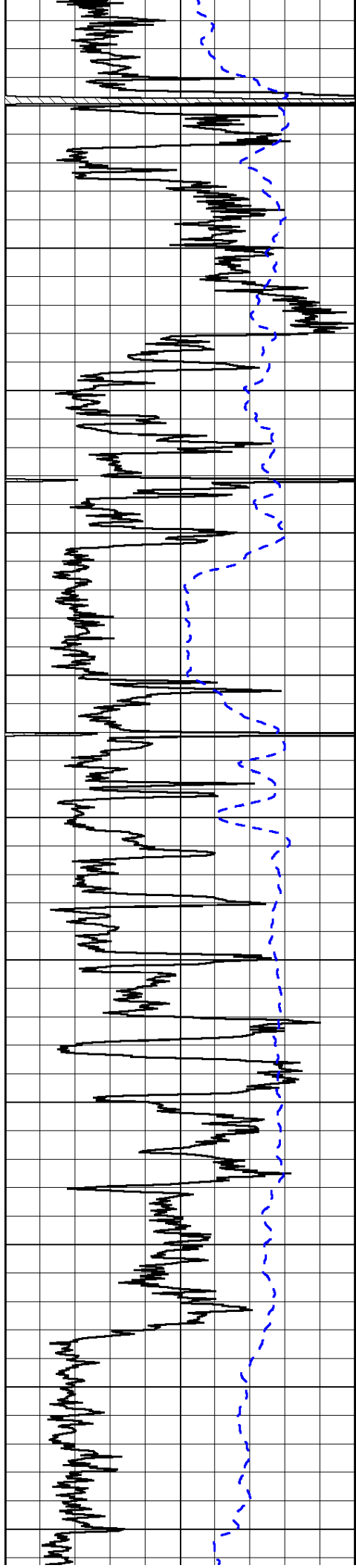


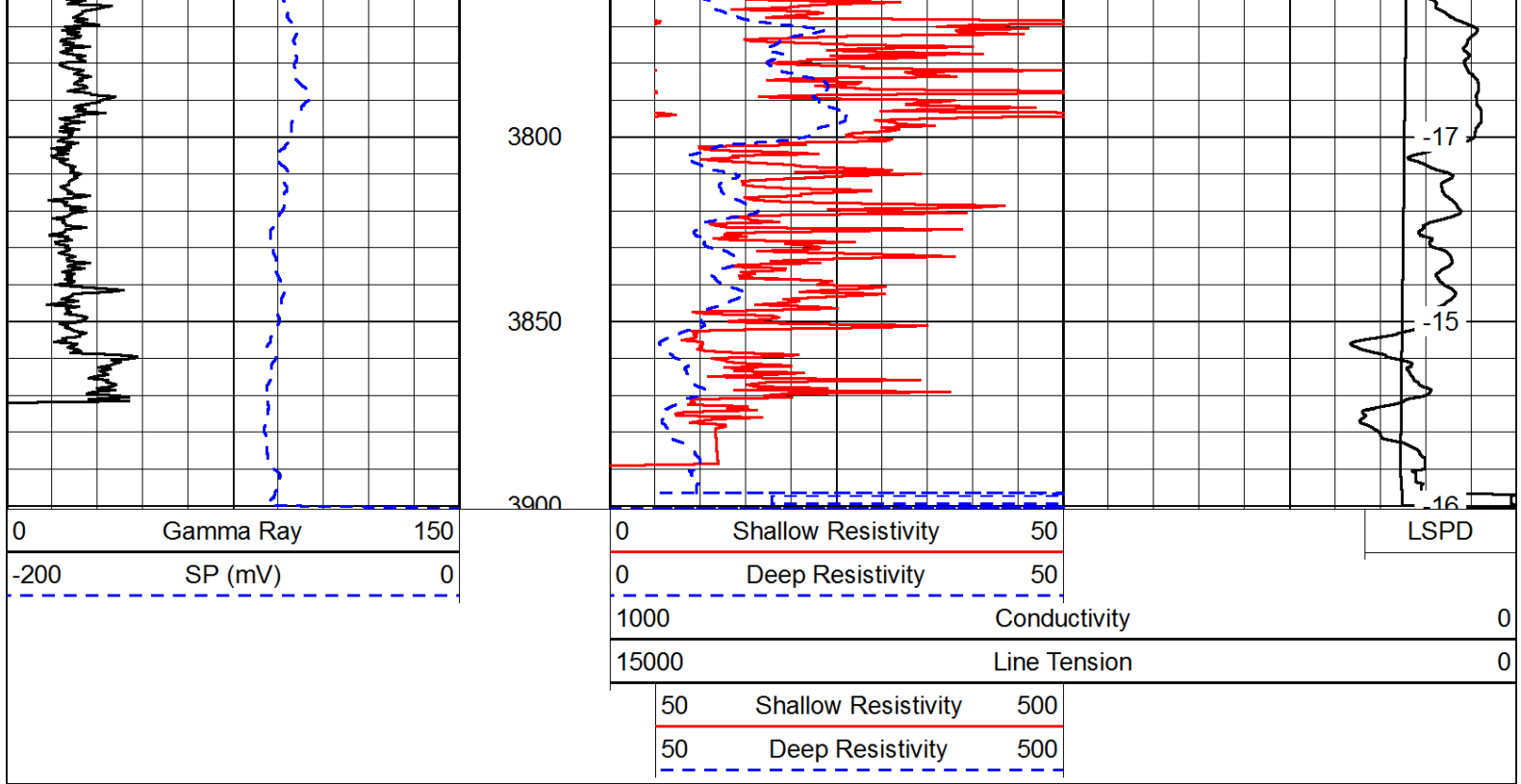






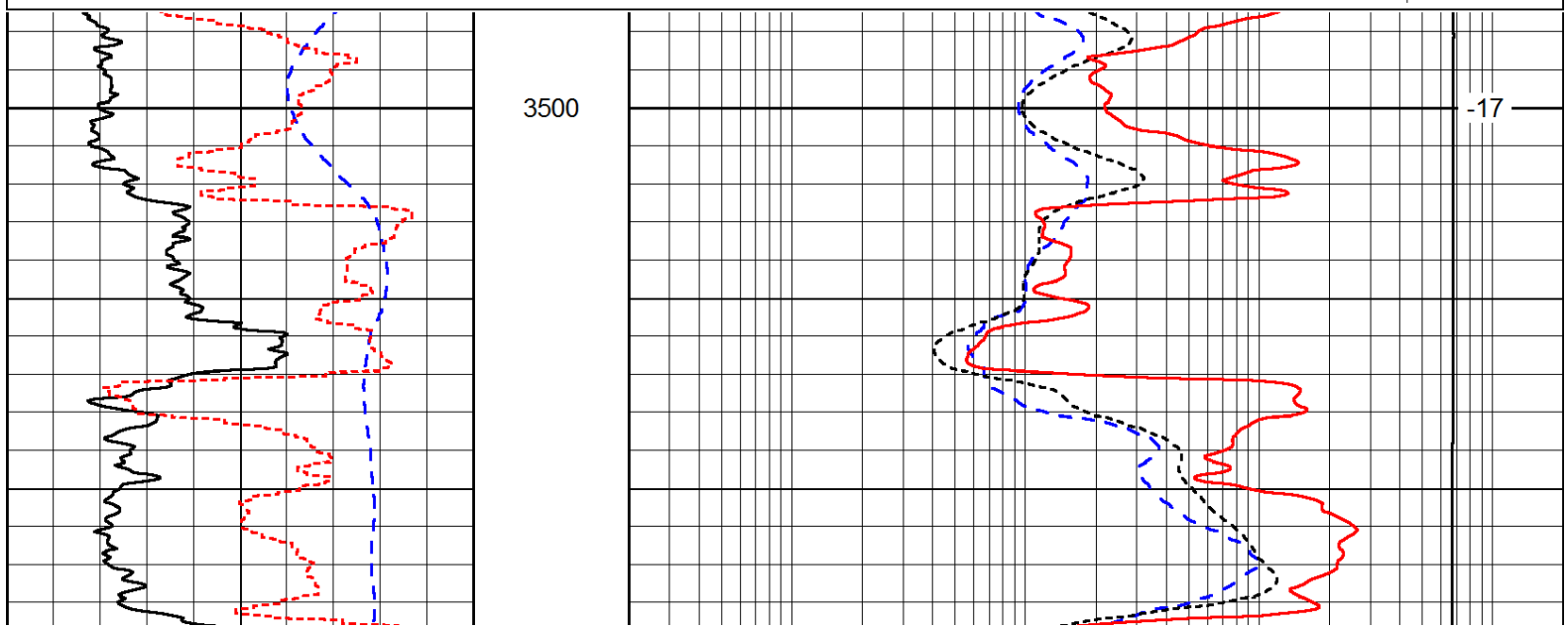
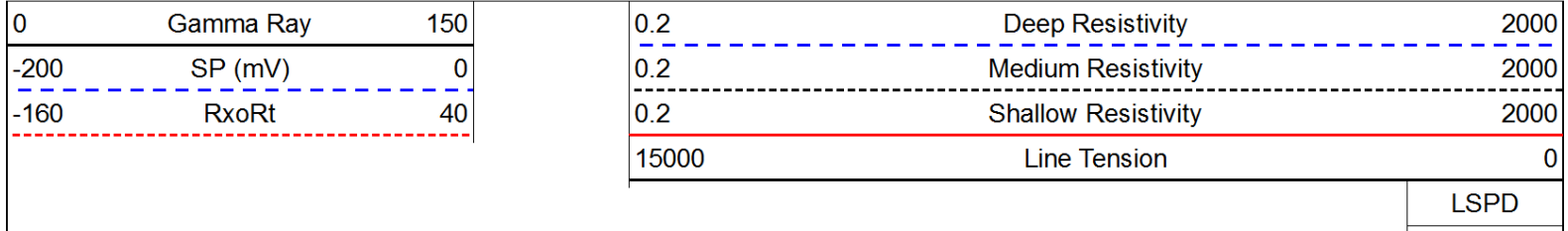


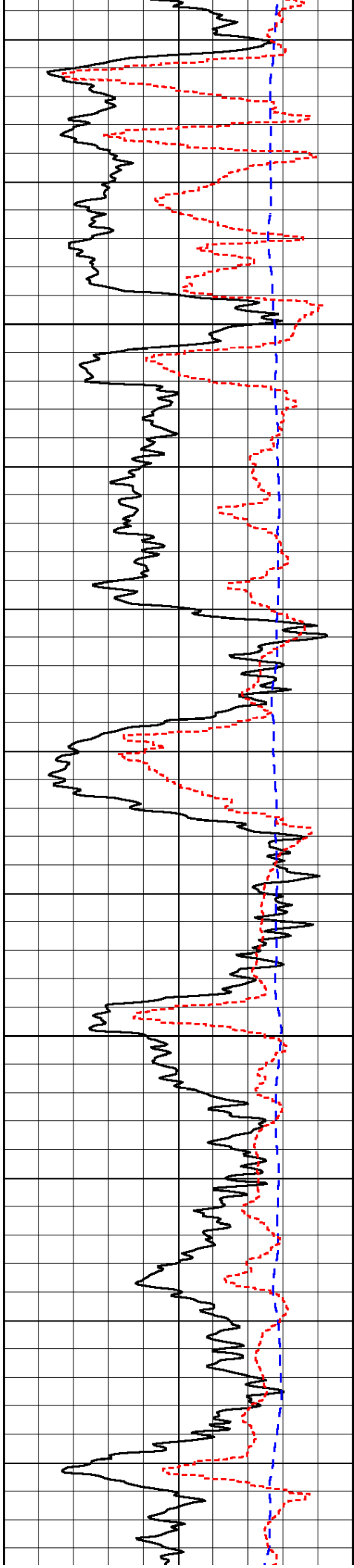





High Resolution

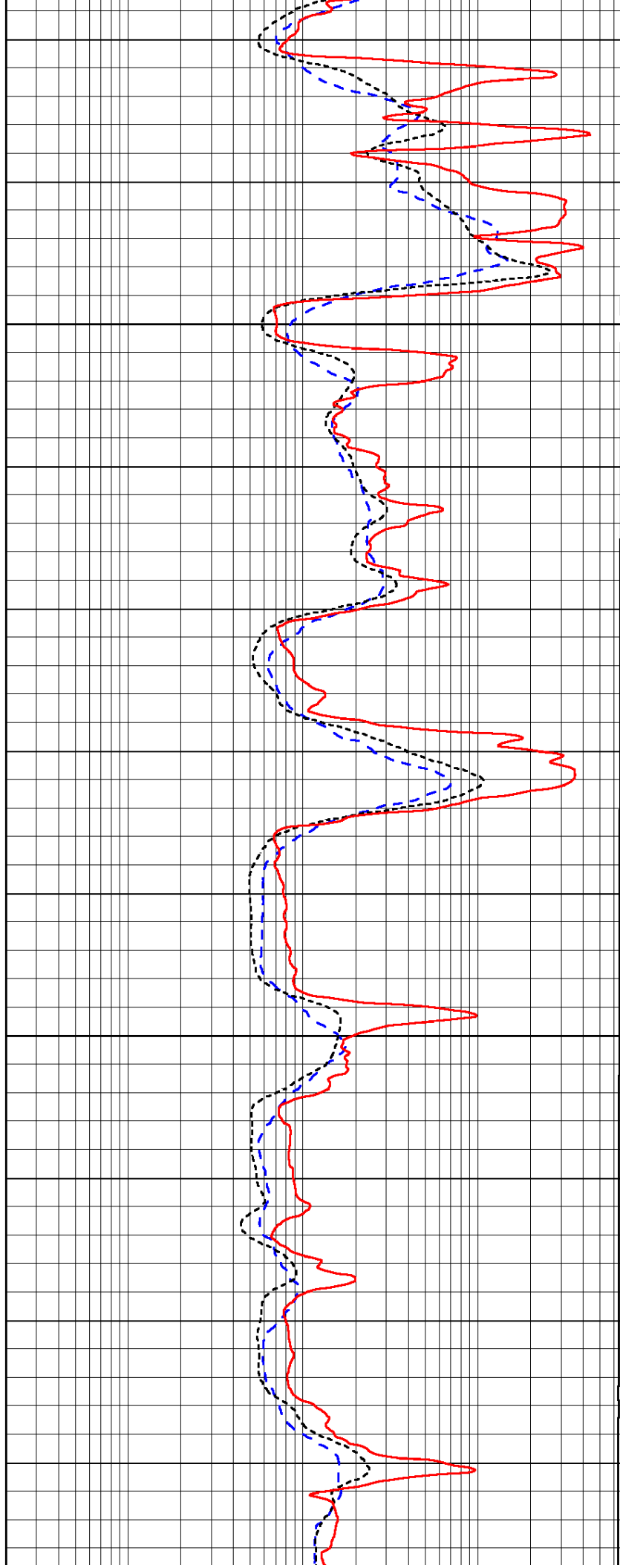
Database File: c:\warrior\data\fg holl_schmidt trust a # 1-11\fgholl_schmidt_trust_a_1_11hd.db
 Dataset Pathname: DIL/fghires
 Presentation Format: dil
 Dataset Creation: Mon Aug 18 21:26:38 2014
 Charted by: Depth in Feet scaled 1:120





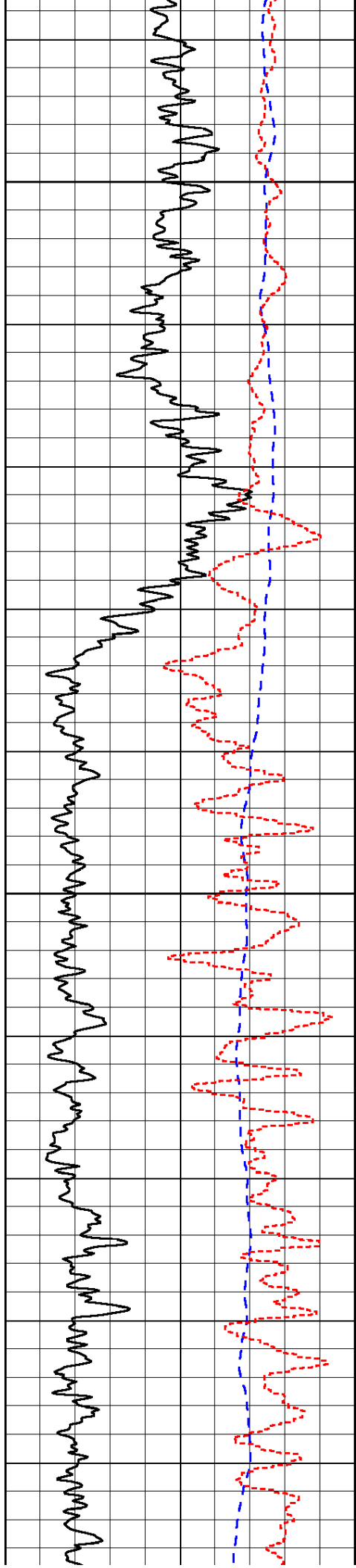
3550

3600



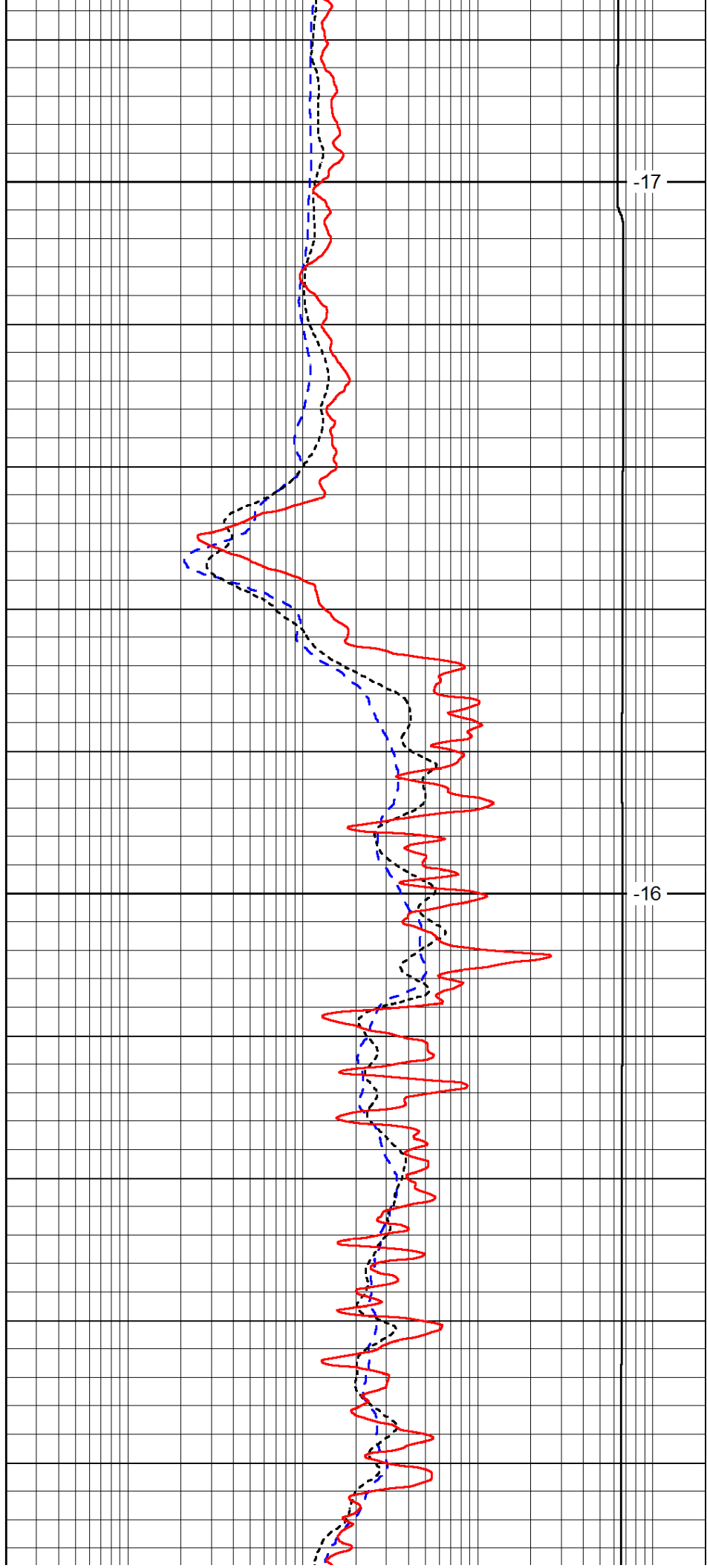
-17

-17



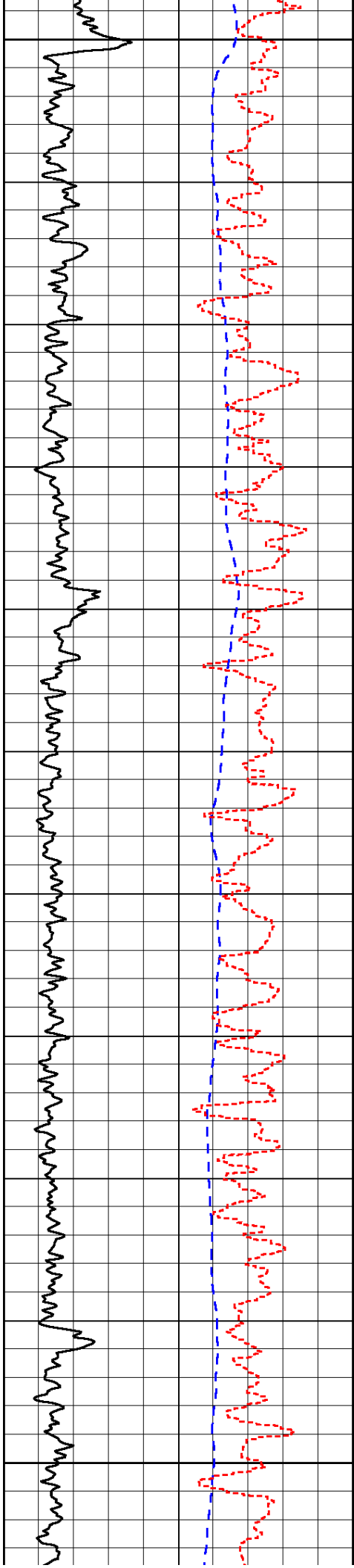
3650

3700



-17

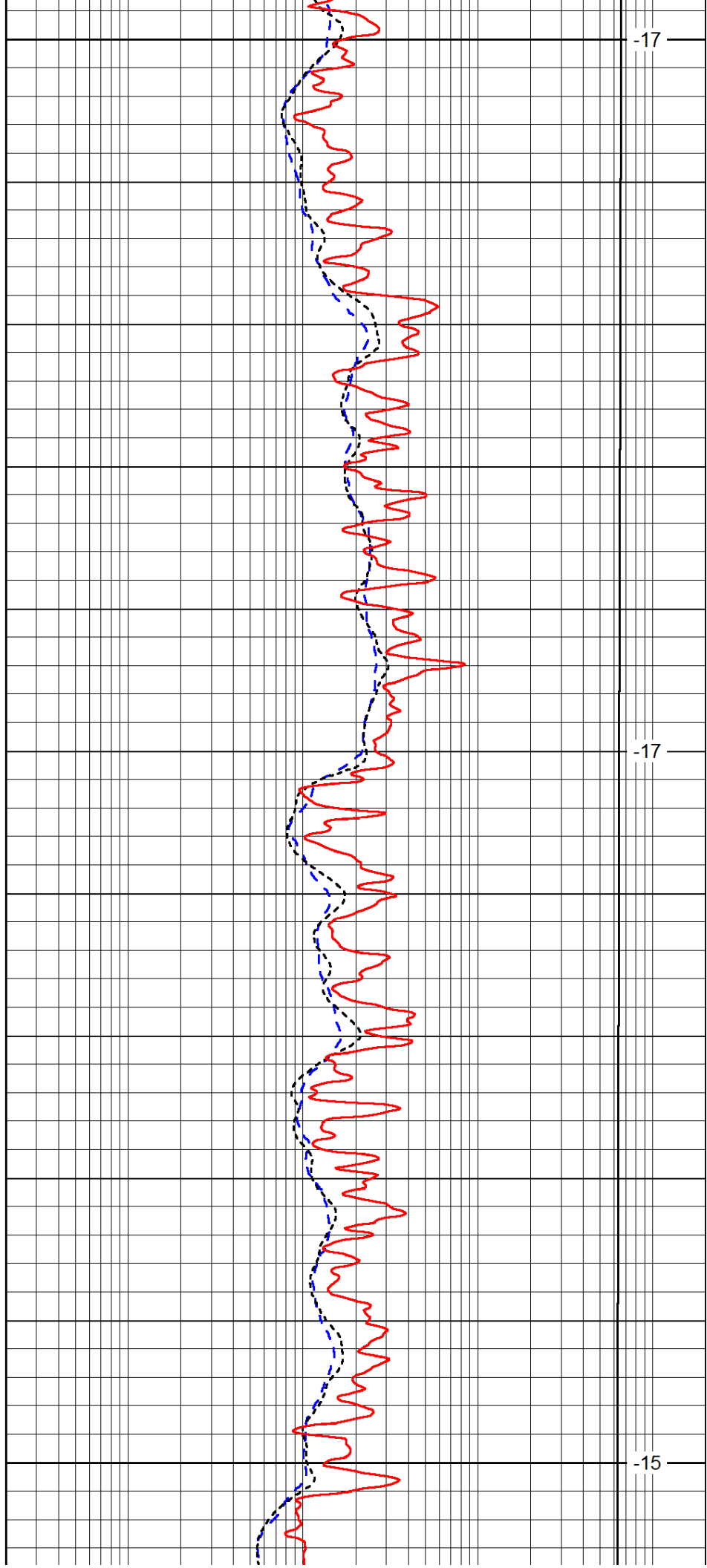
-16



3750

3800

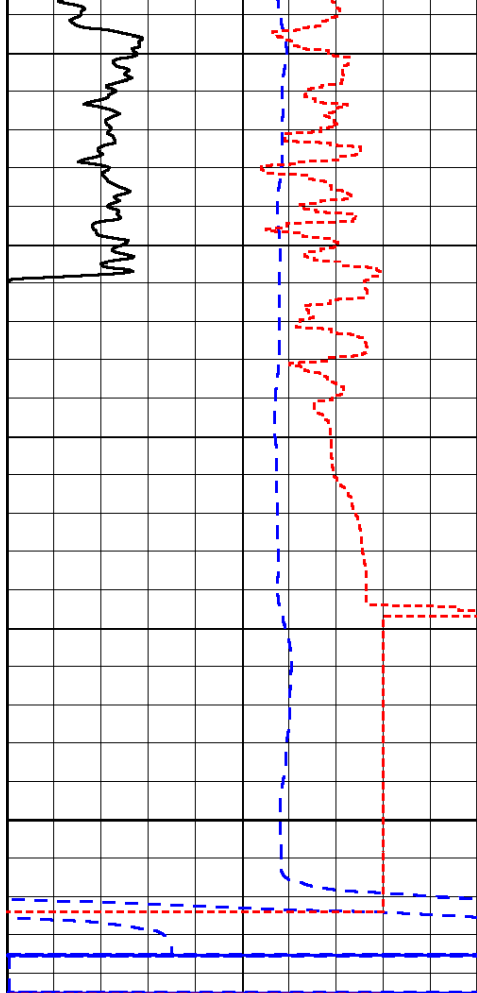
3850



-17

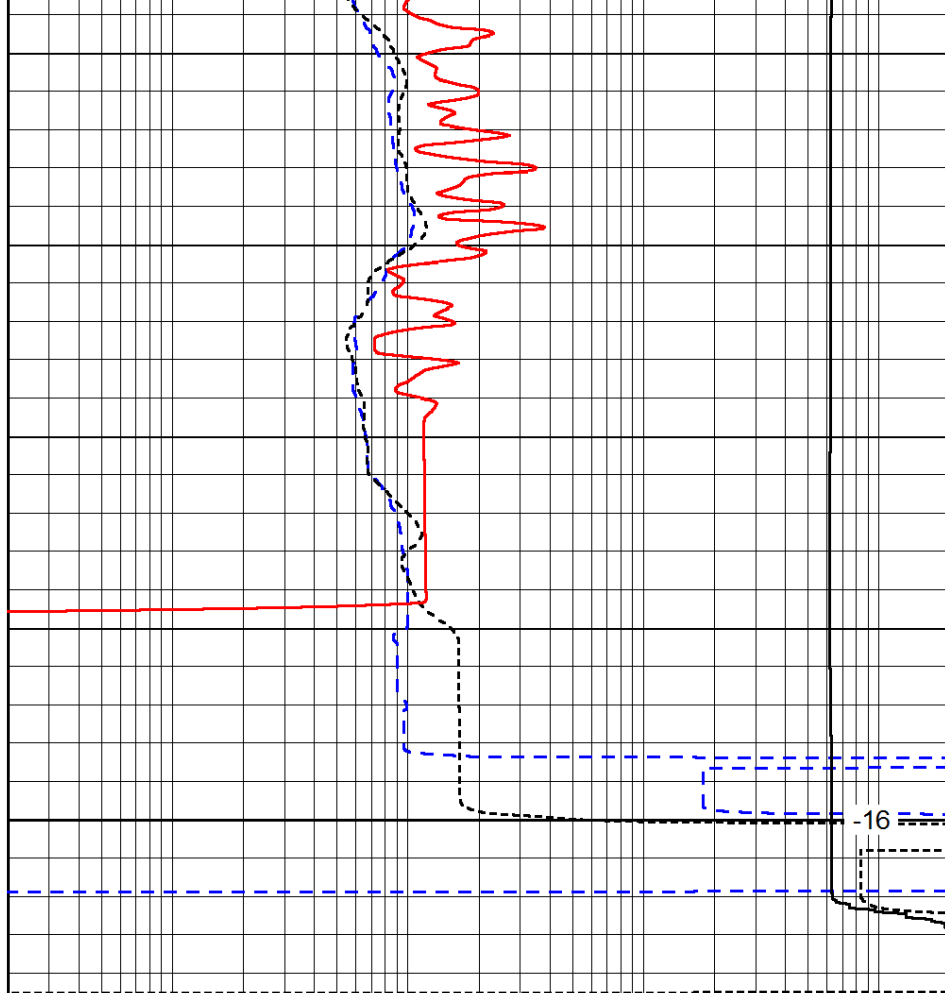
-17

-15



0	Gamma Ray	150
-200	SP (mV)	0
-160	RxoRt	40

3900



0.2	Deep Resistivity	2000
0.2	Medium Resistivity	2000
0.2	Shallow Resistivity	2000
15000	Line Tension	0

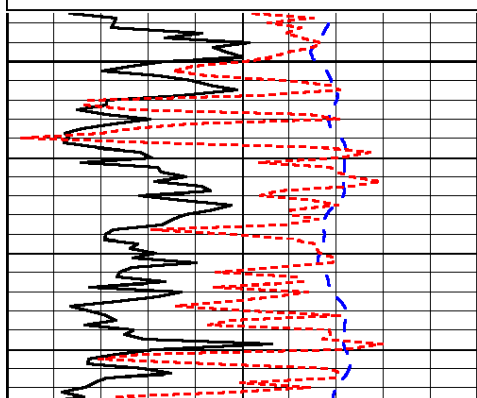
LSPD

Database File: c:\warrior\data\fg holl_schmidt trust a # 1-11\fgholl_schmidt_trust_a_1_11hd.db
 Dataset Pathname: DIL/fgstk
 Presentation Format: dil
 Dataset Creation: Mon Aug 18 21:26:43 2014
 Charted by: Depth in Feet scaled 1:240

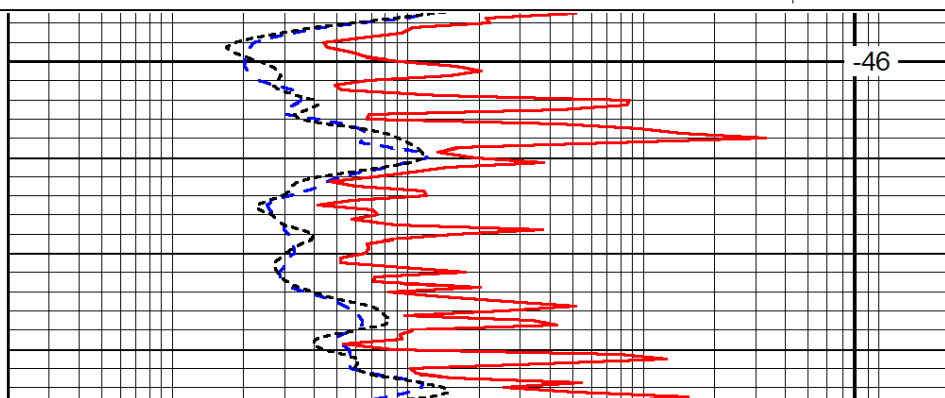
0	Gamma Ray	150
-200	SP (mV)	0
-160	RxoRt	40

0.2	Deep Resistivity	2000
0.2	Medium Resistivity	2000
0.2	Shallow Resistivity	2000
15000	Line Tension	0

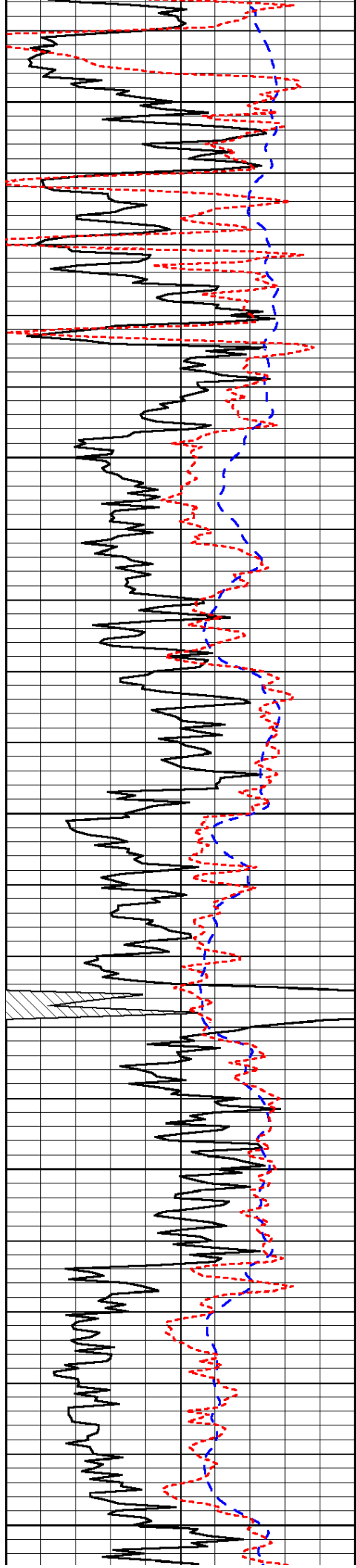
LSPD



1750



-46



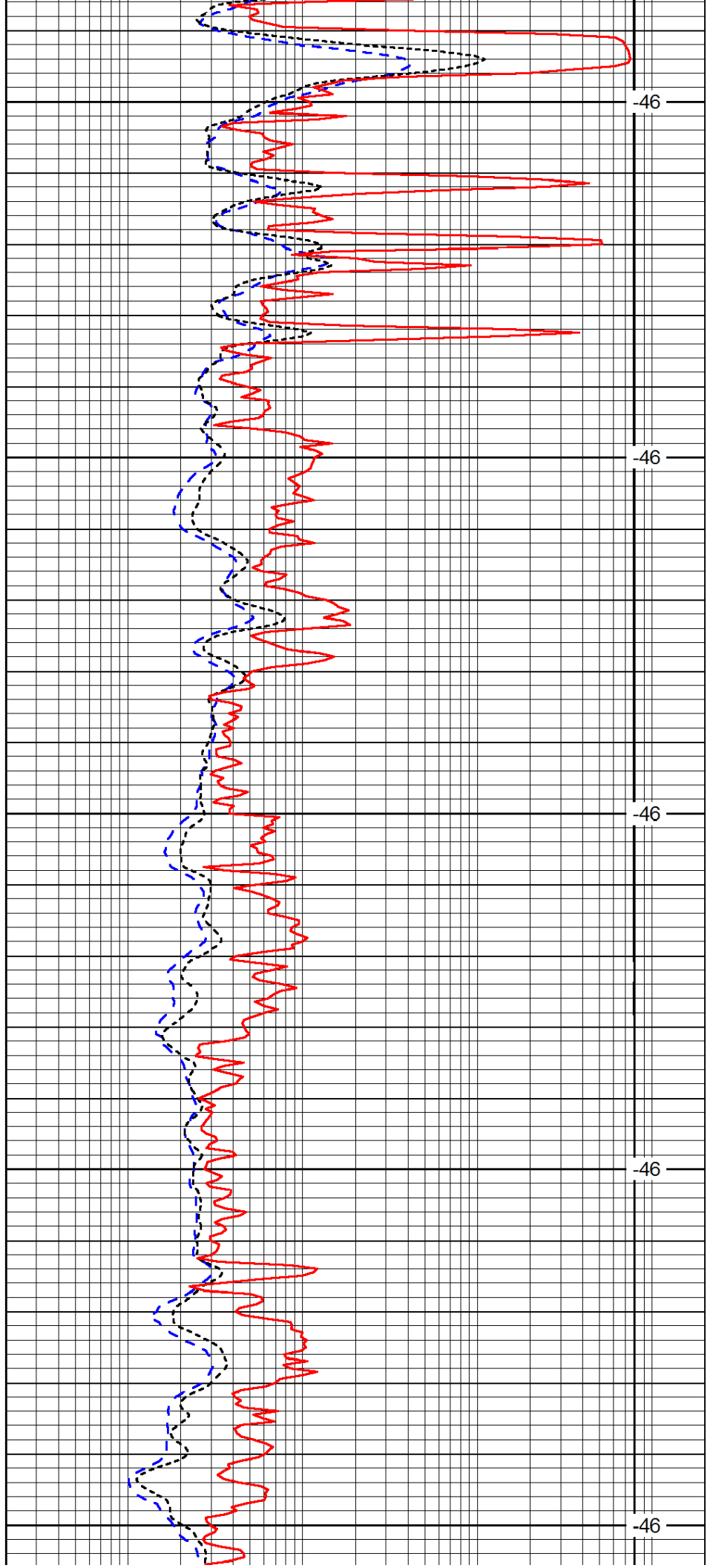
1800

1850

1900

1950

2000



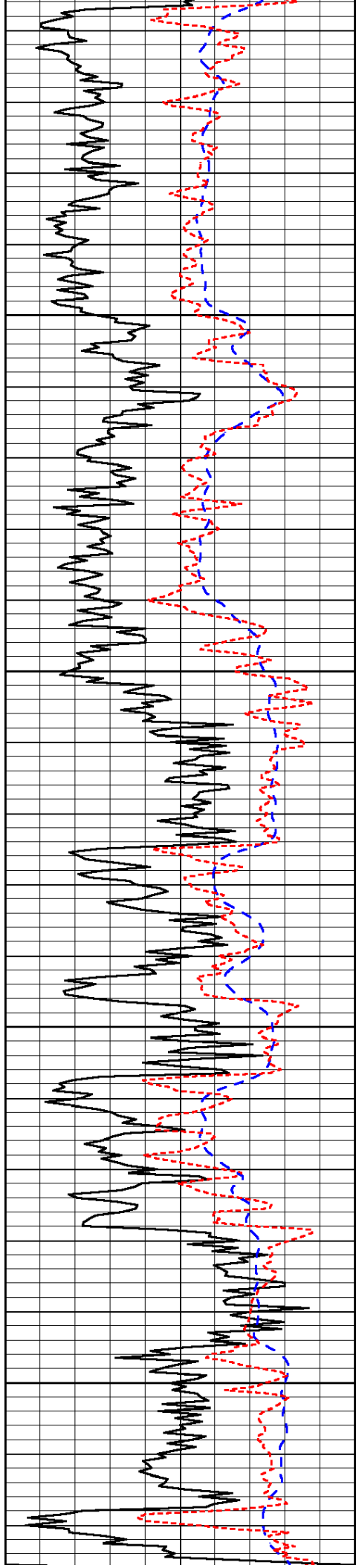
-46

-46

-46

-46

-46

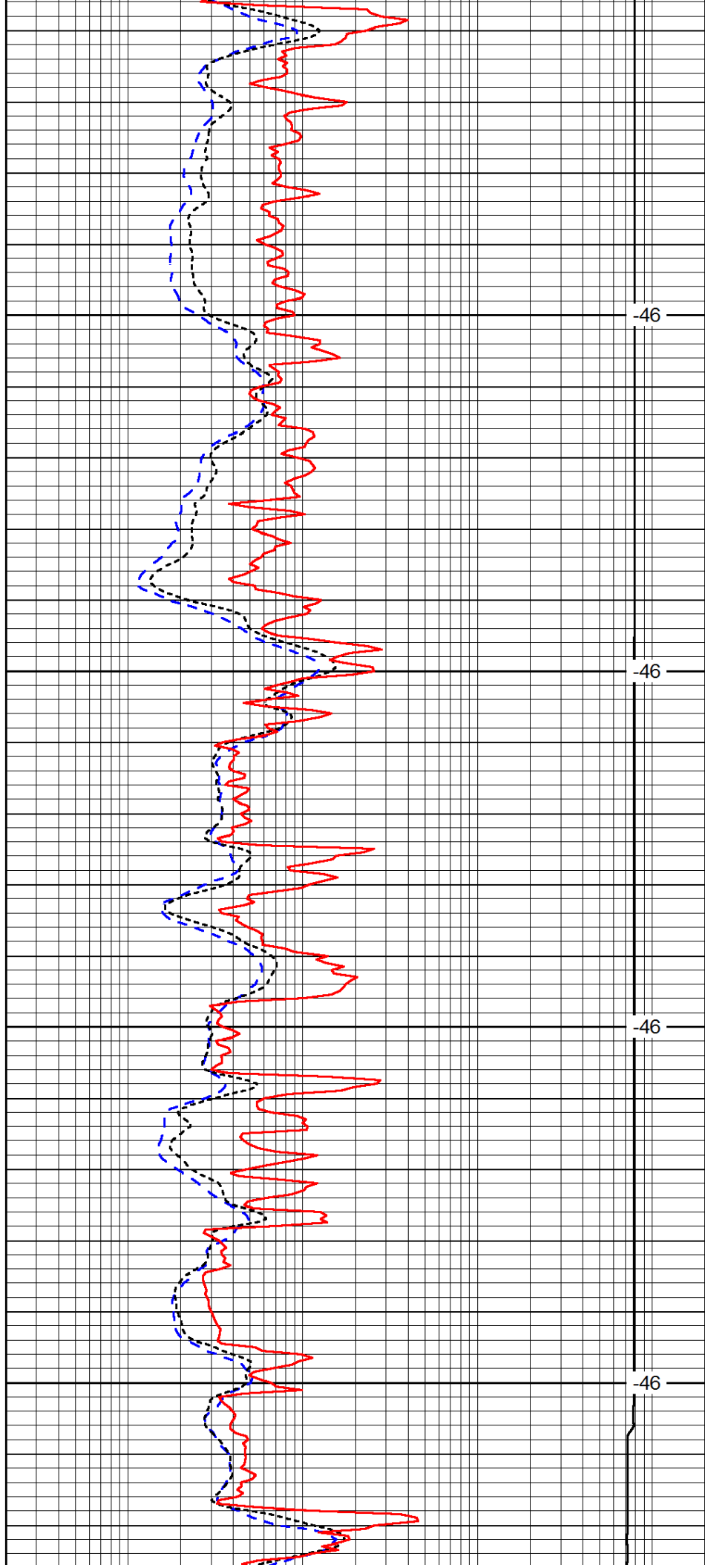


2050

2100

2150

2200

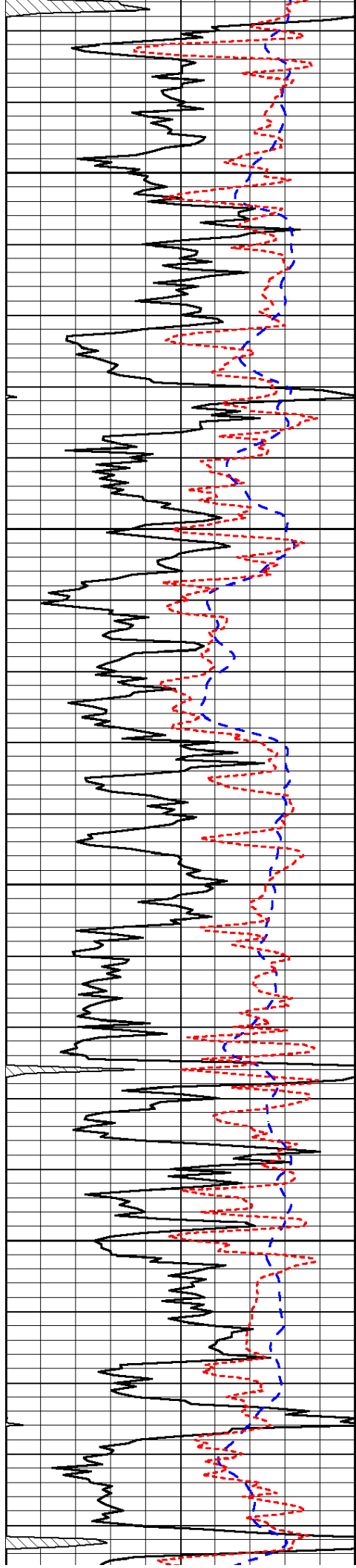


-46

-46

-46

-46

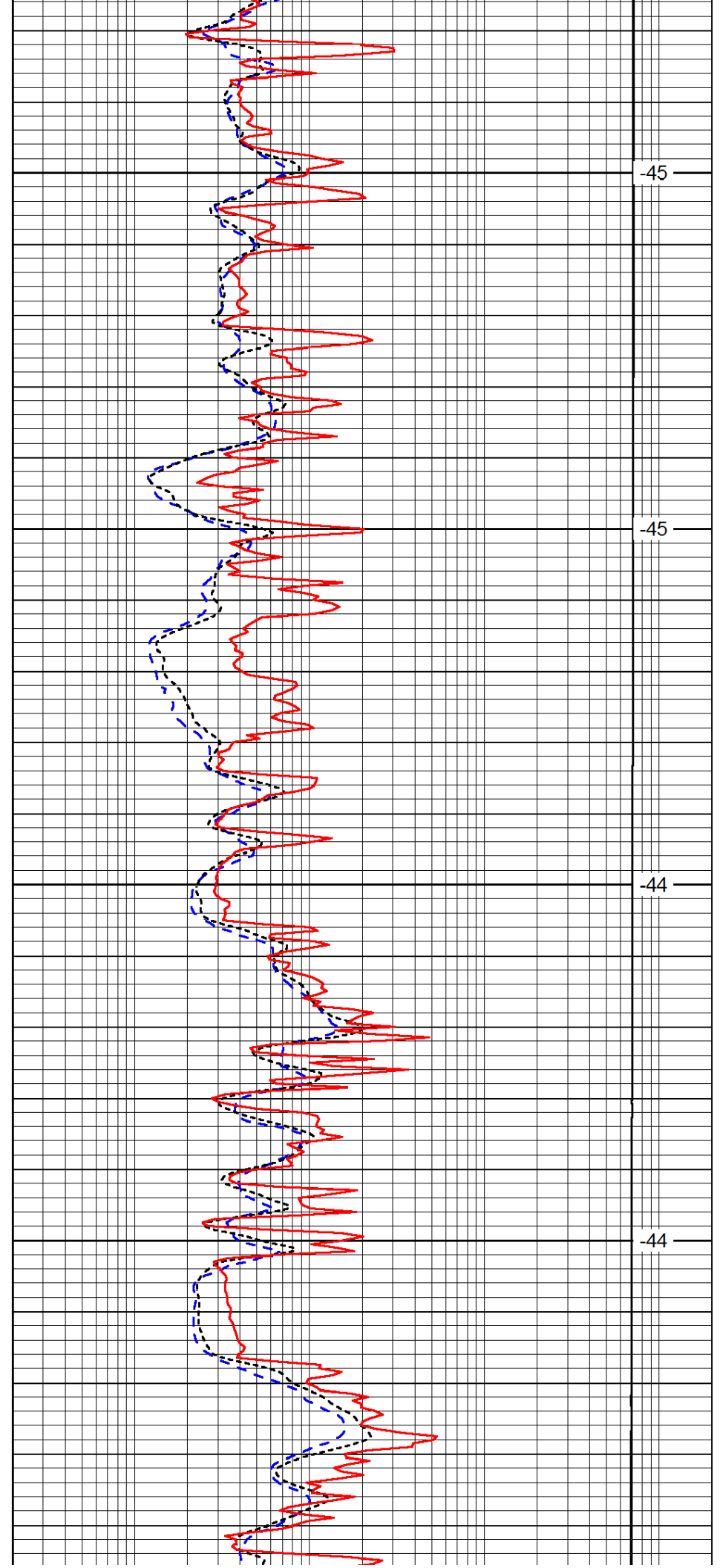


2250

2300

2350

2400

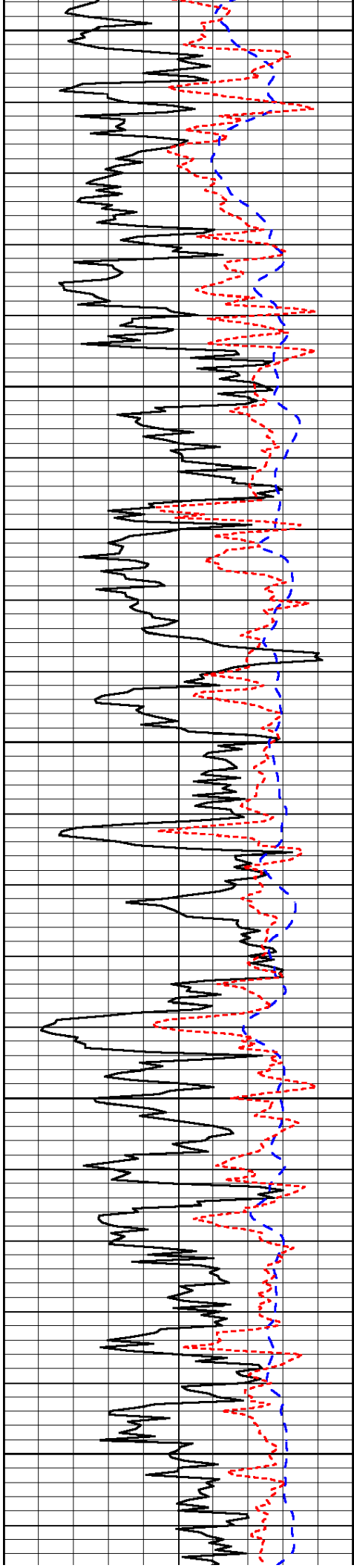


-45

-45

-44

-44



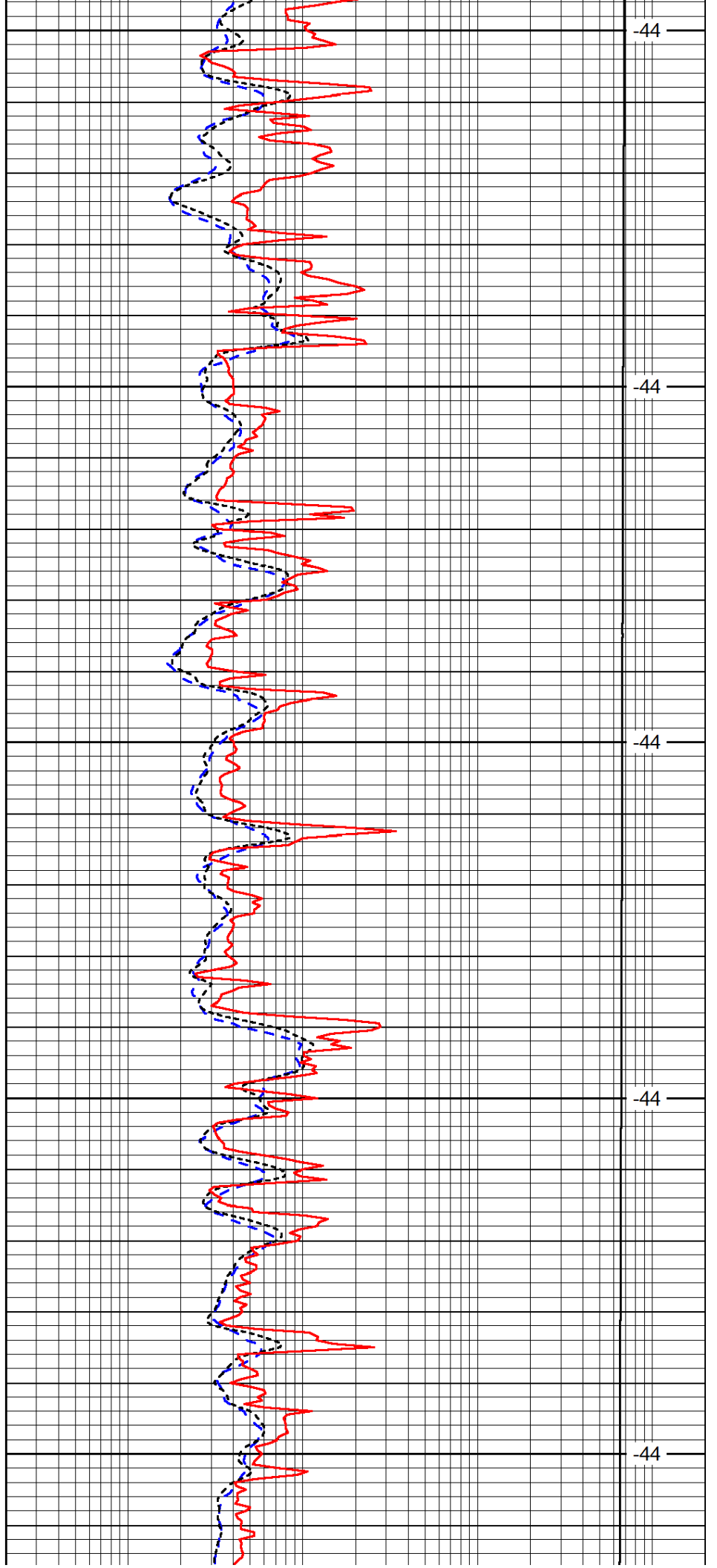
2450

2500

2550

2600

2650



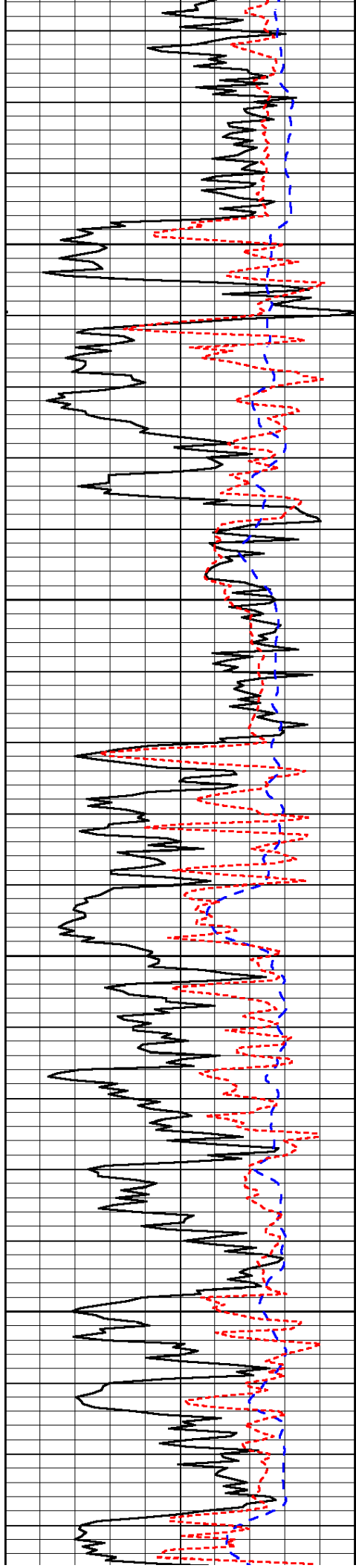
-44

-44

-44

-44

-44

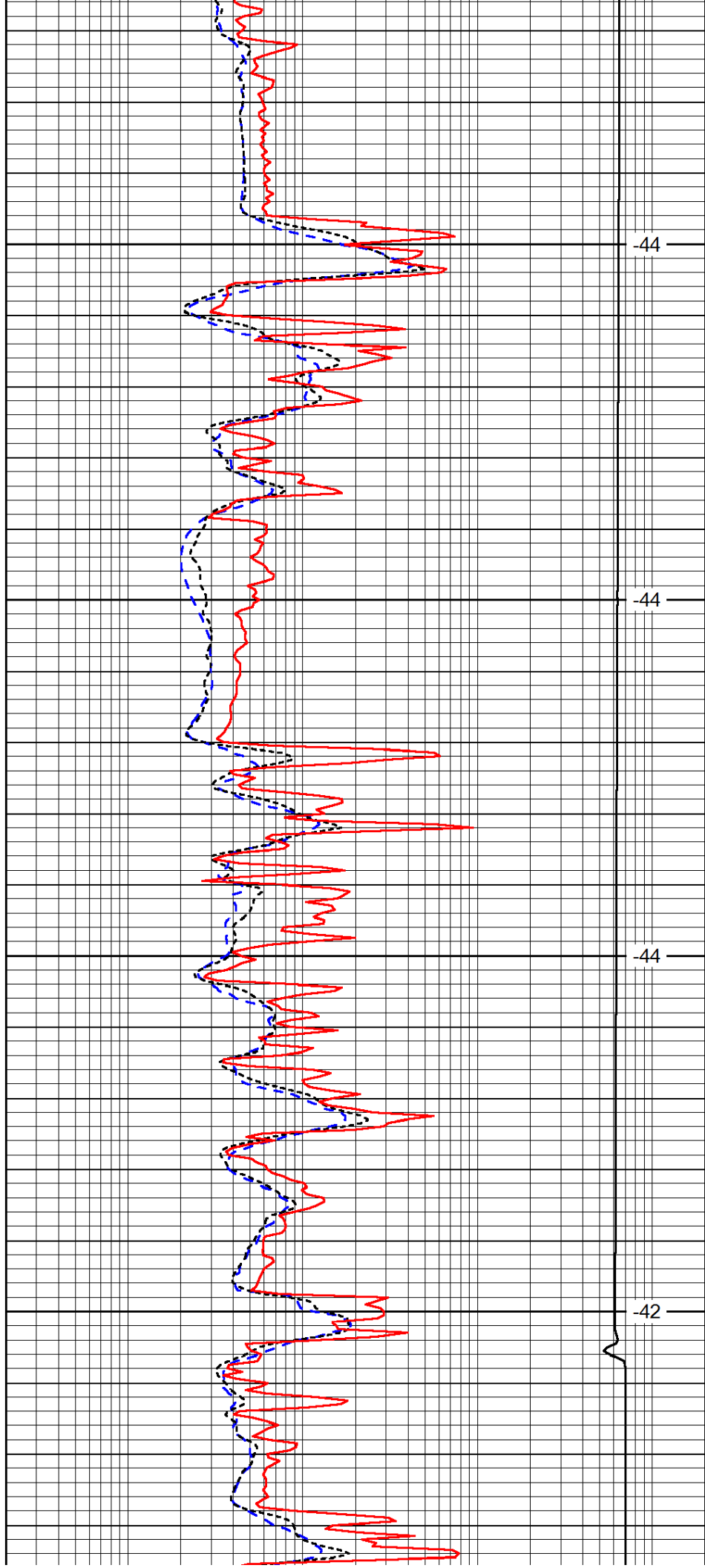


2700

2750

2800

2850

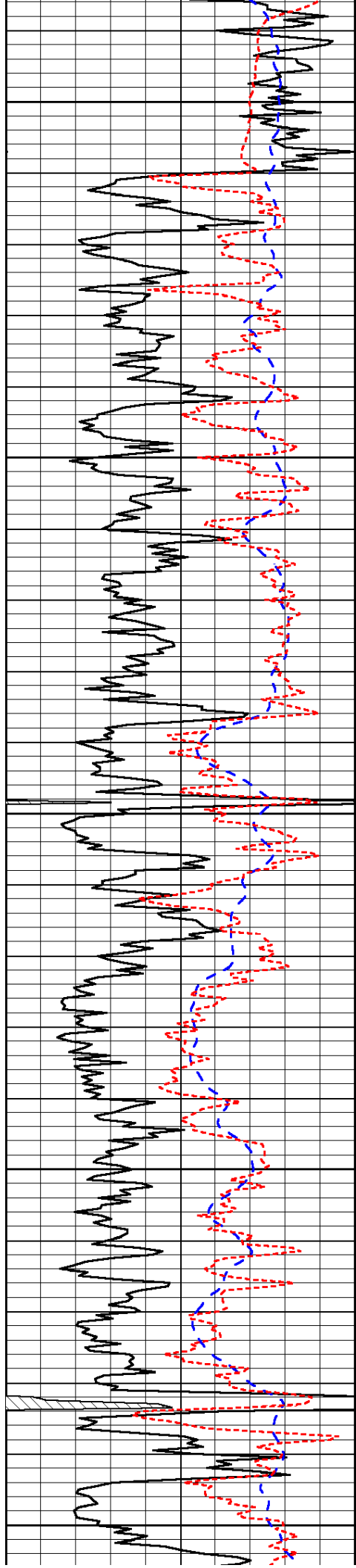


-44

-44

-44

-42



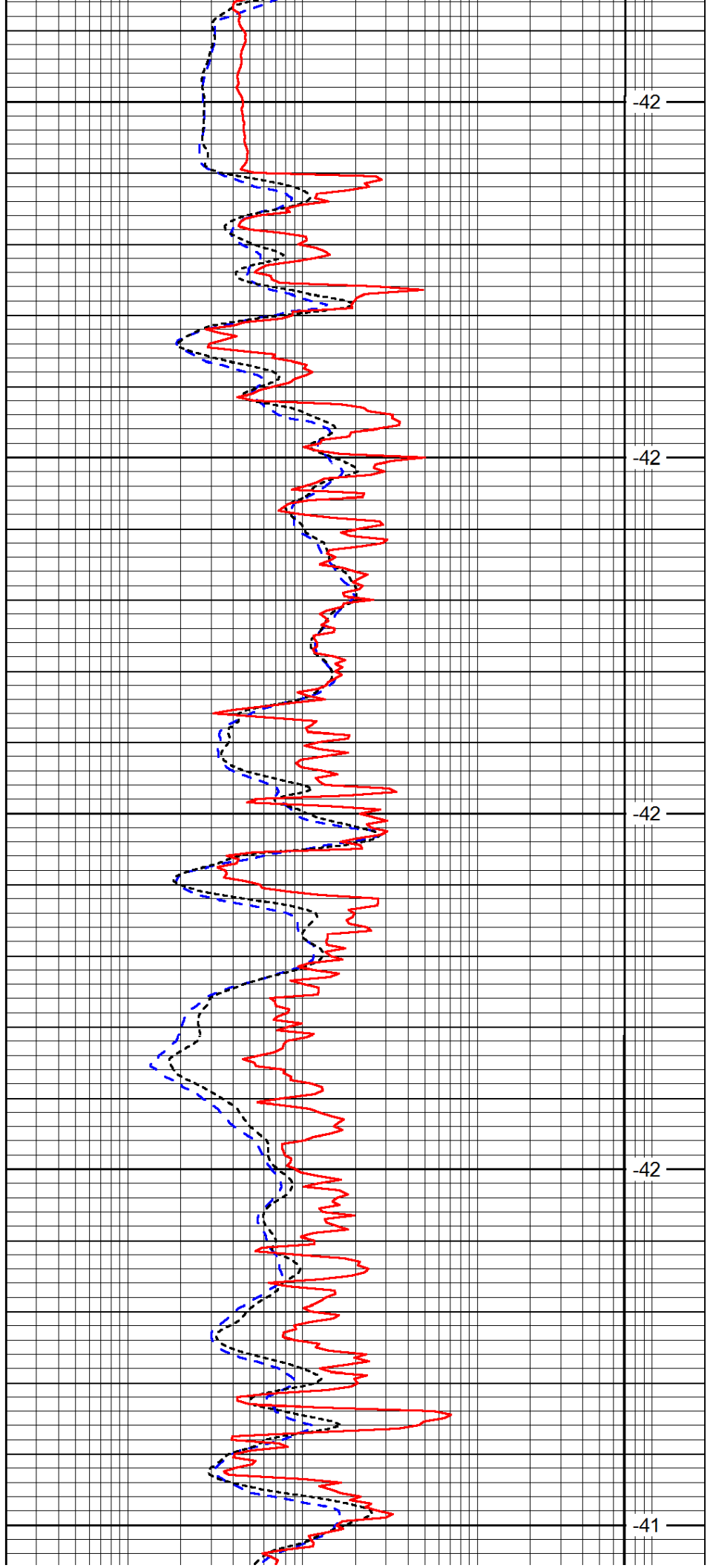
2900

2950

3000

3050

3100



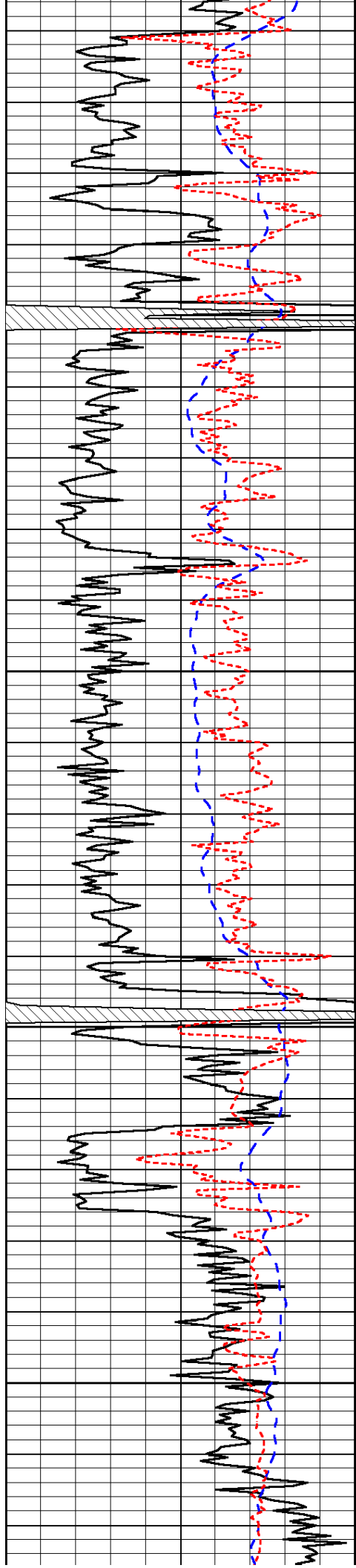
-42

-42

-42

-42

-41

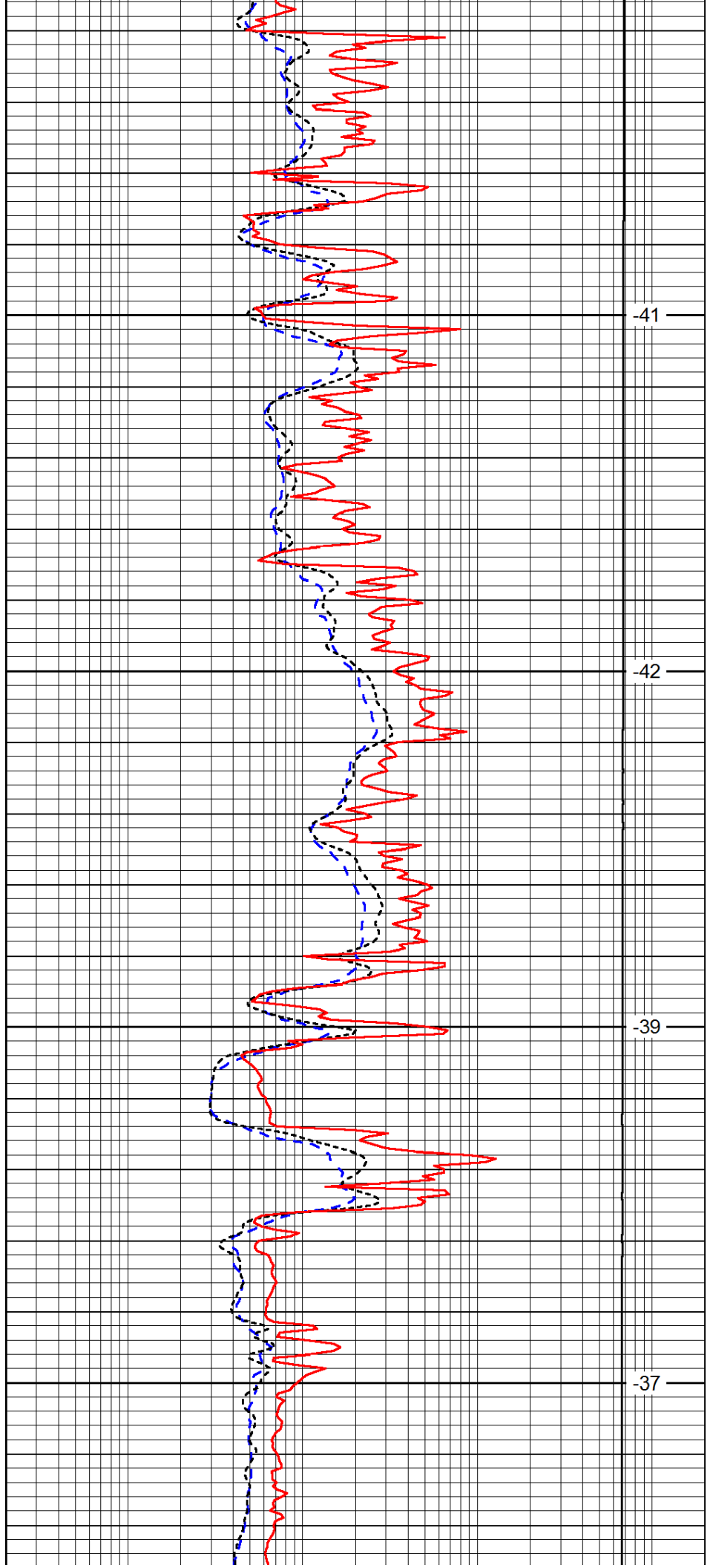


3150

3200

3250

3300

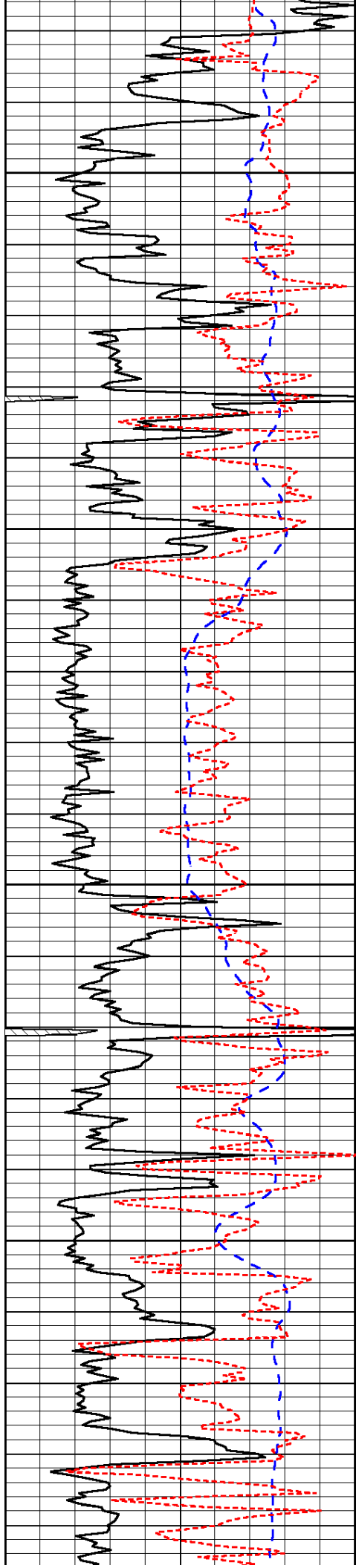


-41

-42

-39

-37

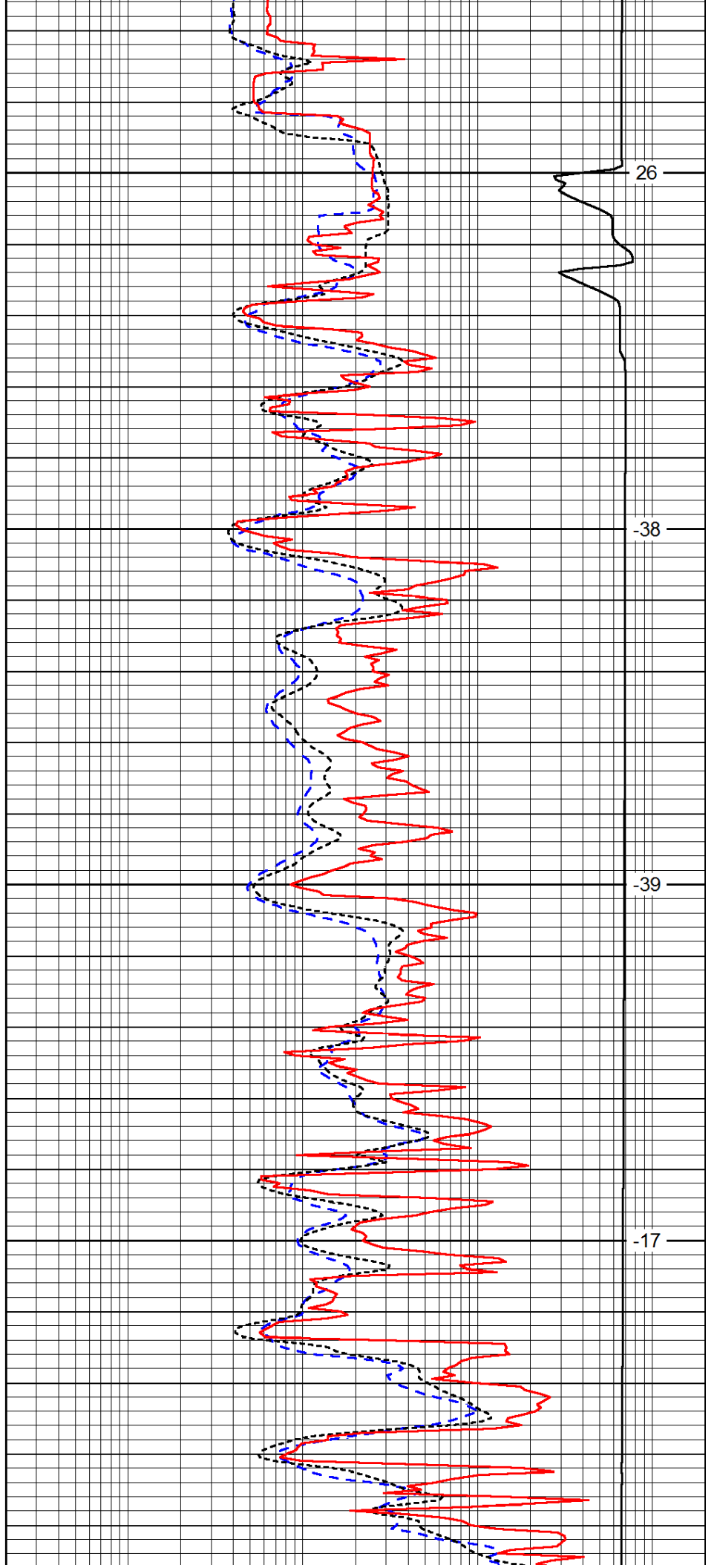


3350

3400

3450

3500

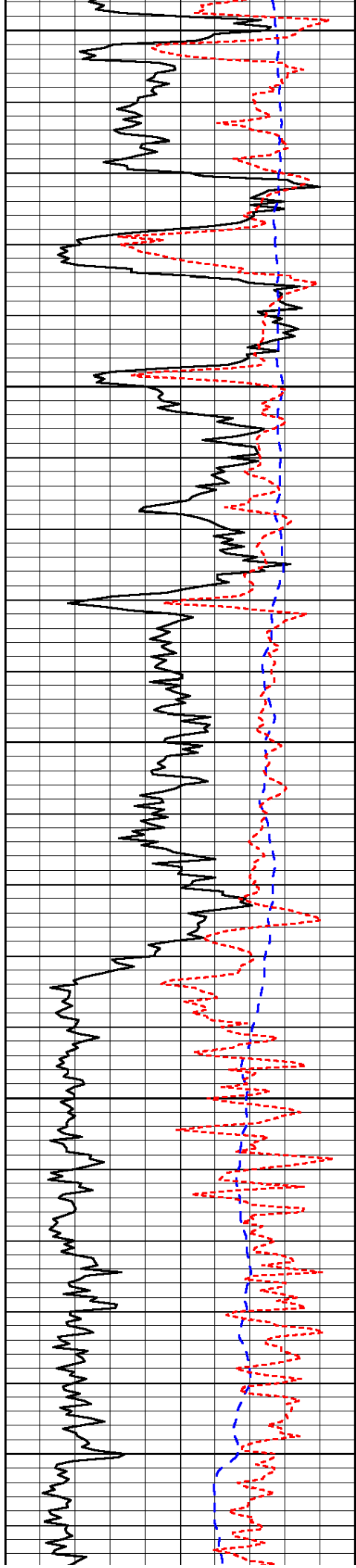


26

-38

-39

-17



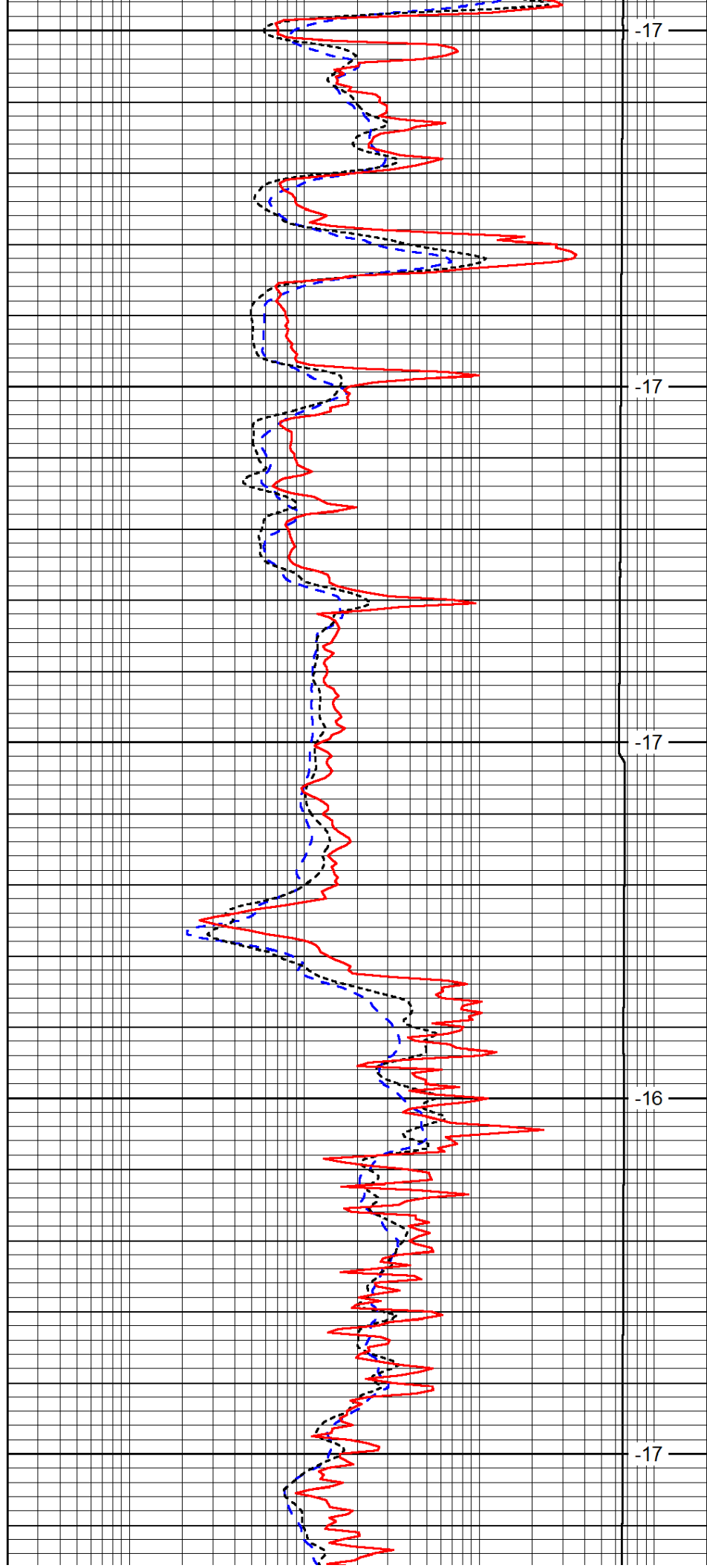
3550

3600

3650

3700

3750



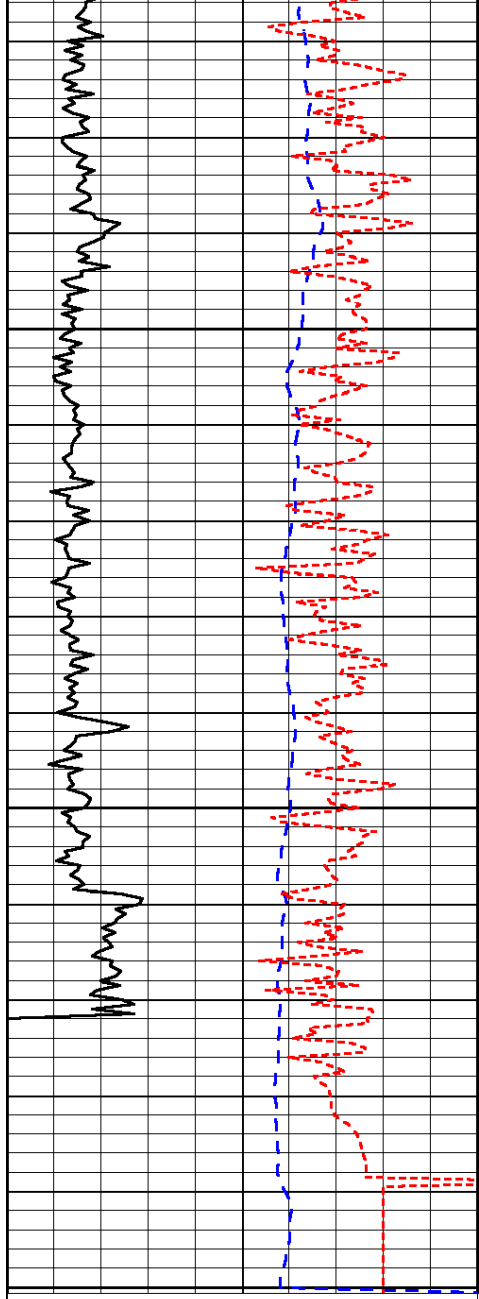
-17

-17

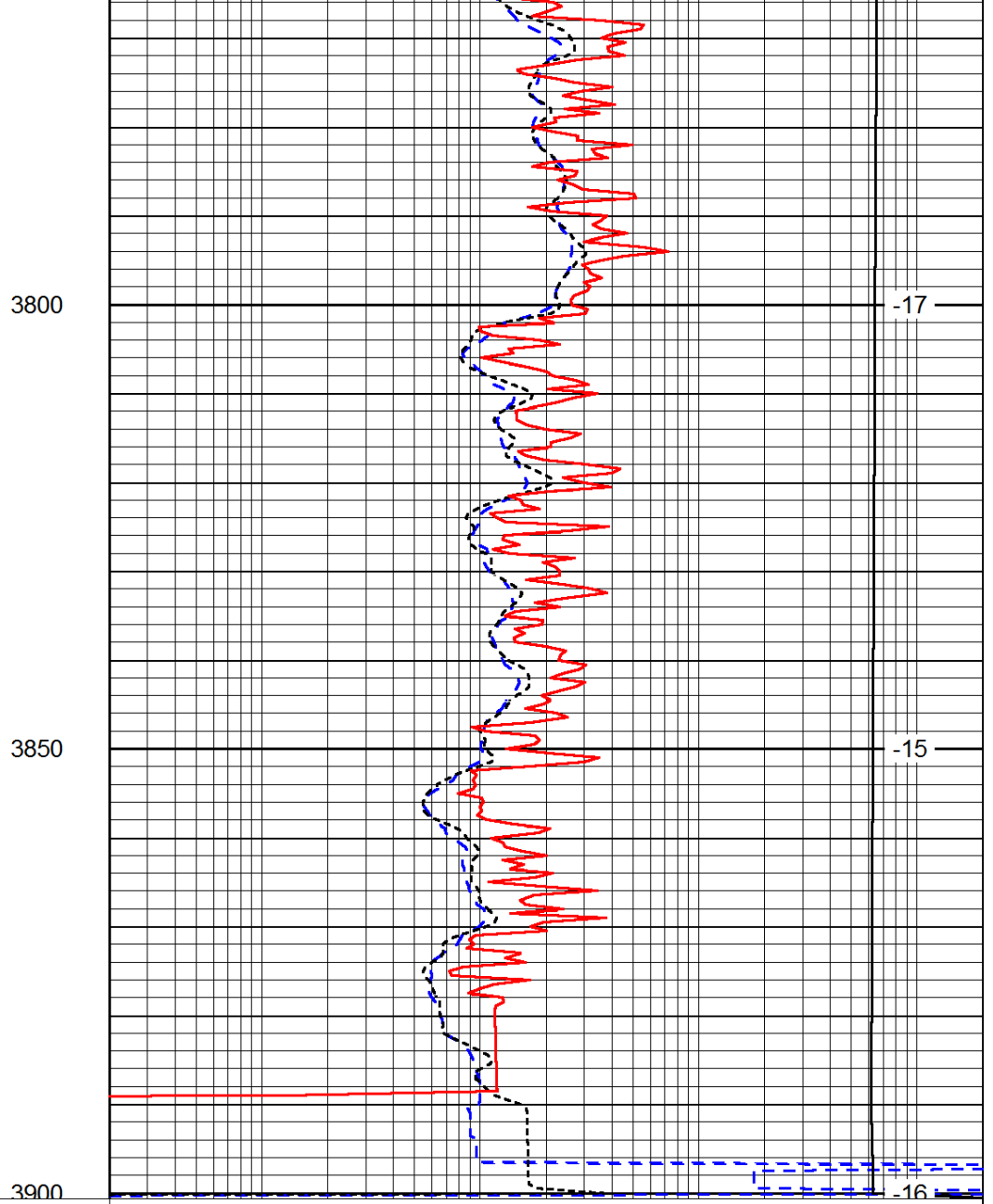
-17

-16

-17



0	Gamma Ray	150
-200	SP (mV)	0
-160	RxoRt	40



0.2	Deep Resistivity	2000
0.2	Medium Resistivity	2000
0.2	Shallow Resistivity	2000
15000	Line Tension	0

LSPD