



Pioneer Energy Services

Borehole Compensated Sonic Log

15-009-26,006-00-00

API No.	15-009-26,006-00-00		
Company	F.G. Holl Company, LLC		
Well	Schmidt Trust "A" # 1-11		
Field	Wildcat		
County	Barton		
State	Kansas		
Location	S2-SE-NW 2400' FNL & 2000' FWL		
Sec: 11	Twp: 20S	Rge: 15W	Elevation 1954
Log Measured From	Kelly Bushing	8	Ft. Above Perm. Datum
Drilling Measured From	Kelly Bushing		
Date	8/18/2014		
Run Number	Two		
Type Log	BHC Sonic		
Depth Driller	3900		
Depth Logger	3895		
Bottom Logged Interval	3884		
Top Logged Interval	900		
Type Fluid In Hole	Chemical		
Salinity, PPM CL	7.100		
Density	9.6		
Level	Full		
Max. Rec. Temp. F	115		
Operating Rig Time	5 Hours		
Equipment -- Location	15 Hays		
Recorded By	J. Henrickson		
Witnessed By	Ryan Greenbaum		

Borehole Record				Casing Record			
Run No.	Bit	From	To	Size	Wgt.	From	To
1	12.25	00	940	8.625	24#	00	940
2	7.875	940	3900				

<<< Fold Here >>>

All interpretations are opinions based on inferences from electrical or other measurements and we cannot and do not guarantee the accuracy or correctness of any interpretation, and we shall not, except in the case of gross or willful negligence on our part, be liable or responsible for any loss, costs, damages, or expenses incurred or sustained by anyone resulting from any interpretation made by any of our officers, agents or employees. These interpretations are also subject to our general terms and conditions set out in our current Price Schedule.

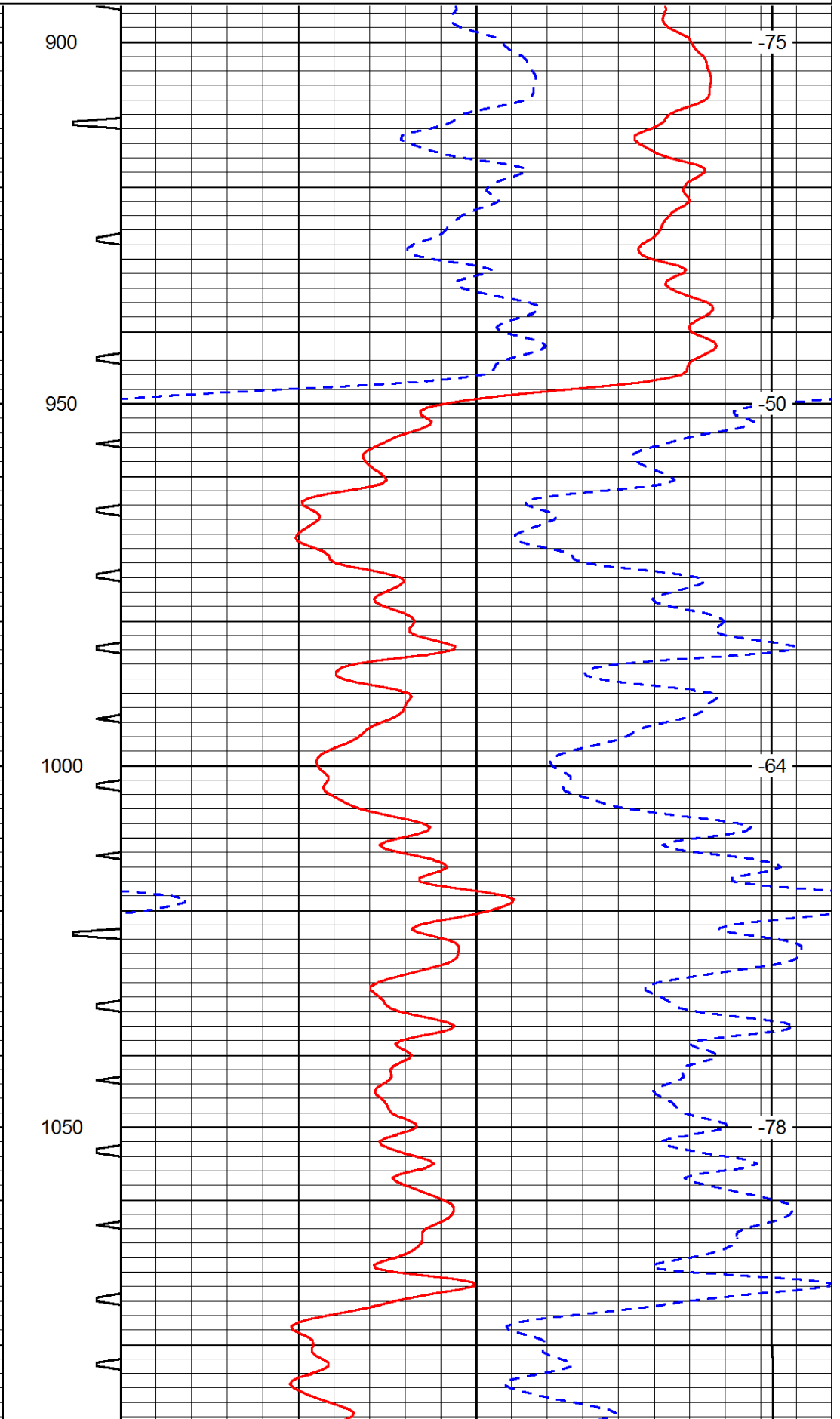
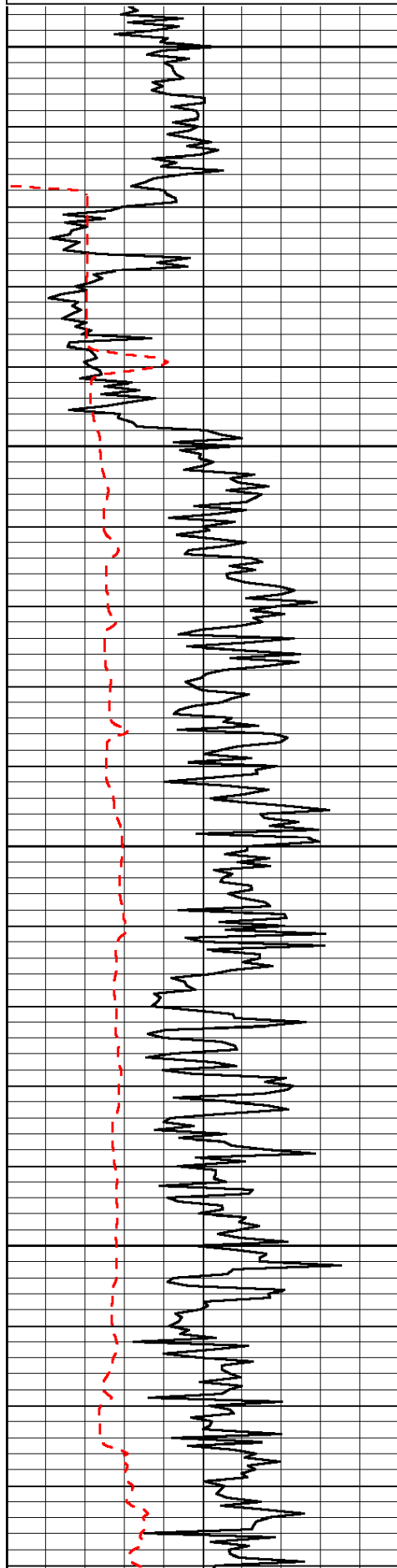
Comments

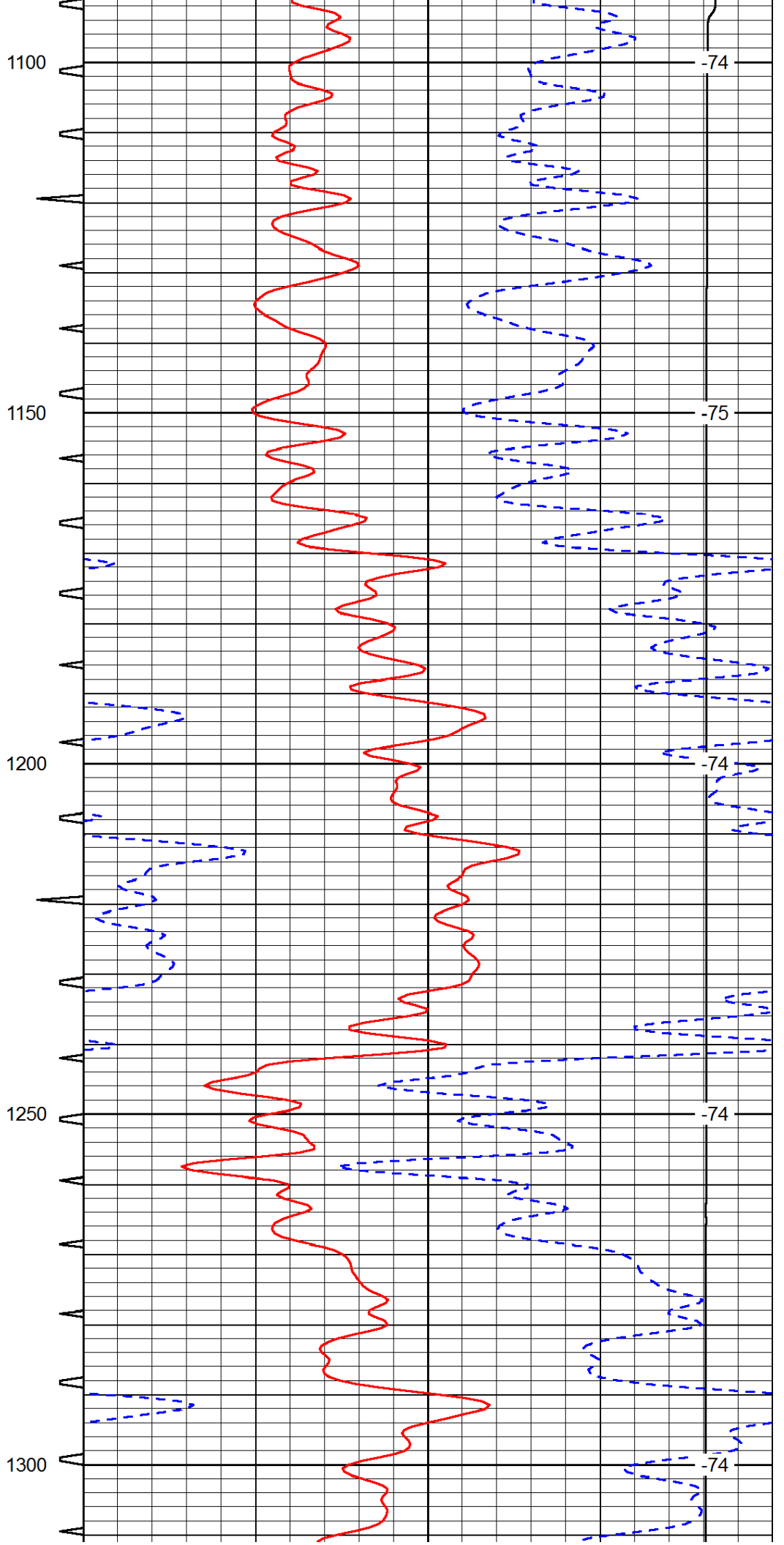
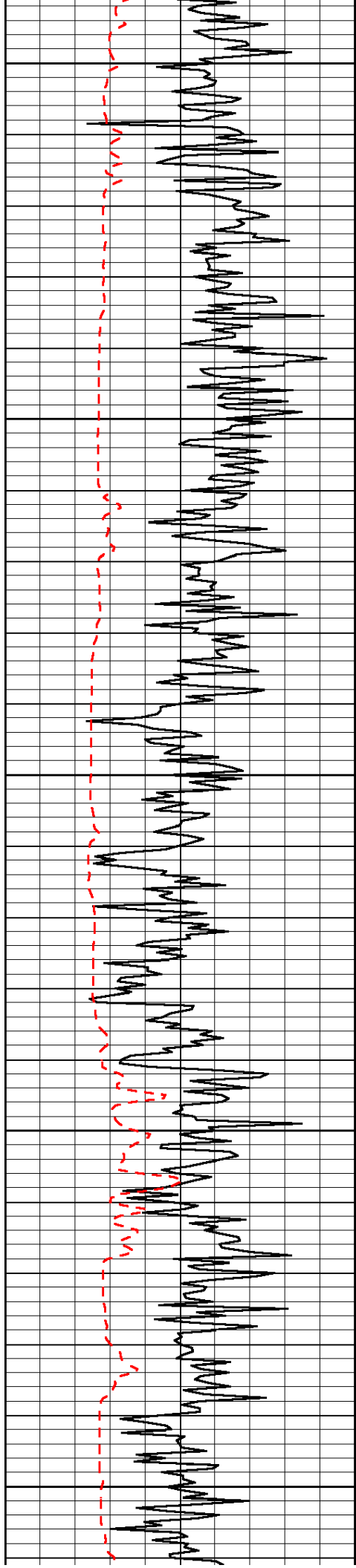
Thank you for using Pioneer Energy Services
www.pioneerenergy.com
 785 625 3858

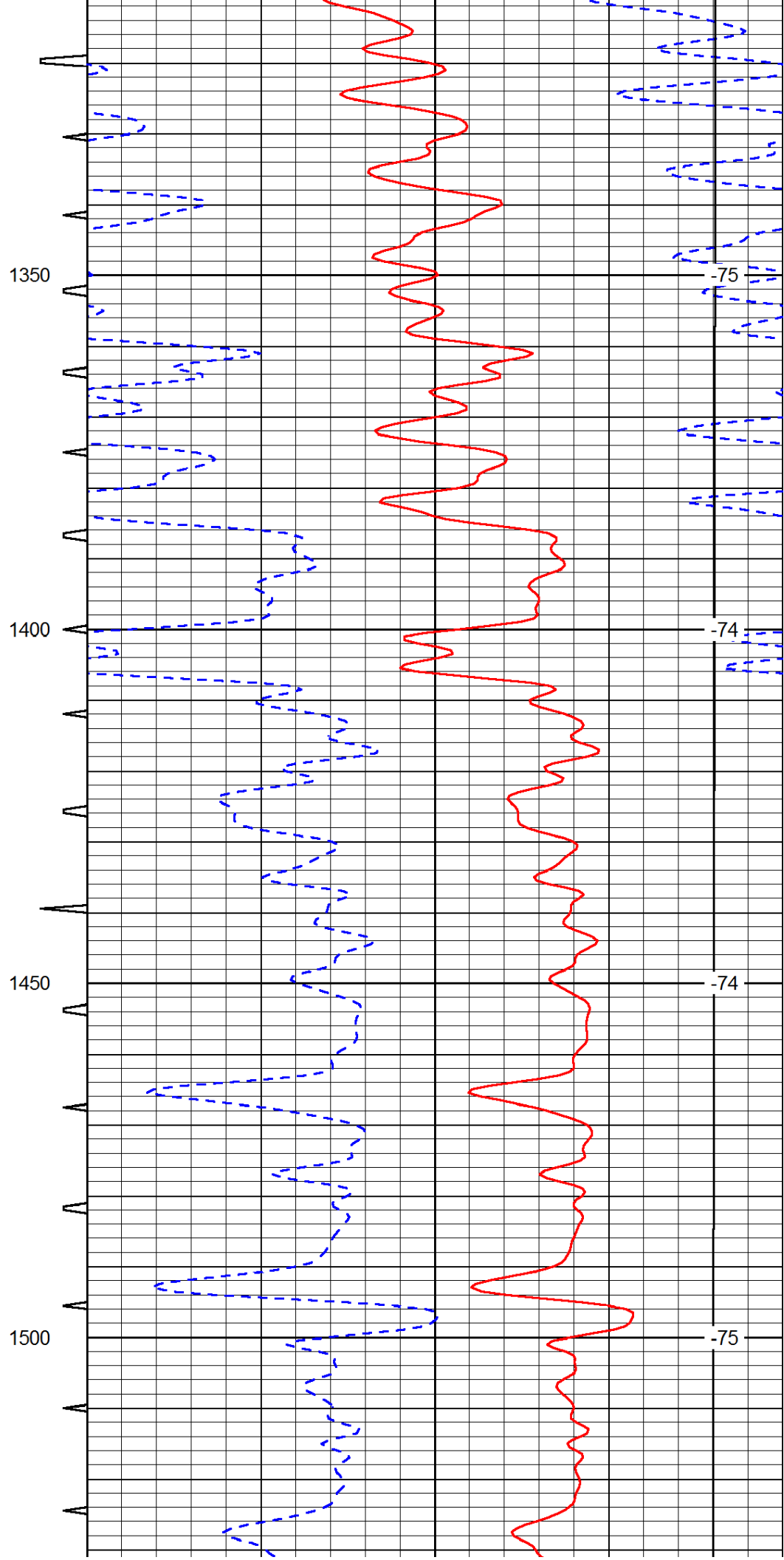
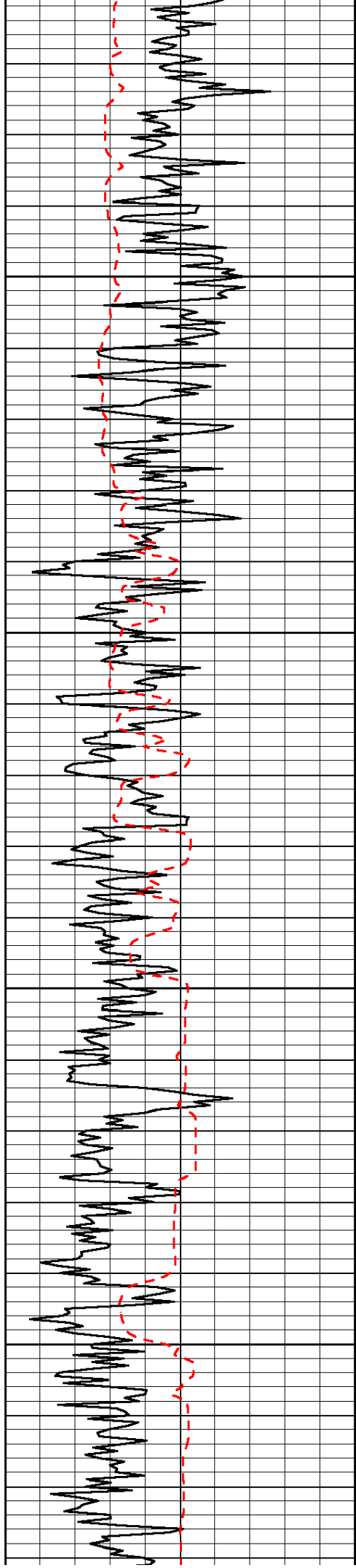
 Great Bend Kansas
 West on HWY 56 to SW 30 Rd, 5 West to 100 Rd, 1/2 North, East Into

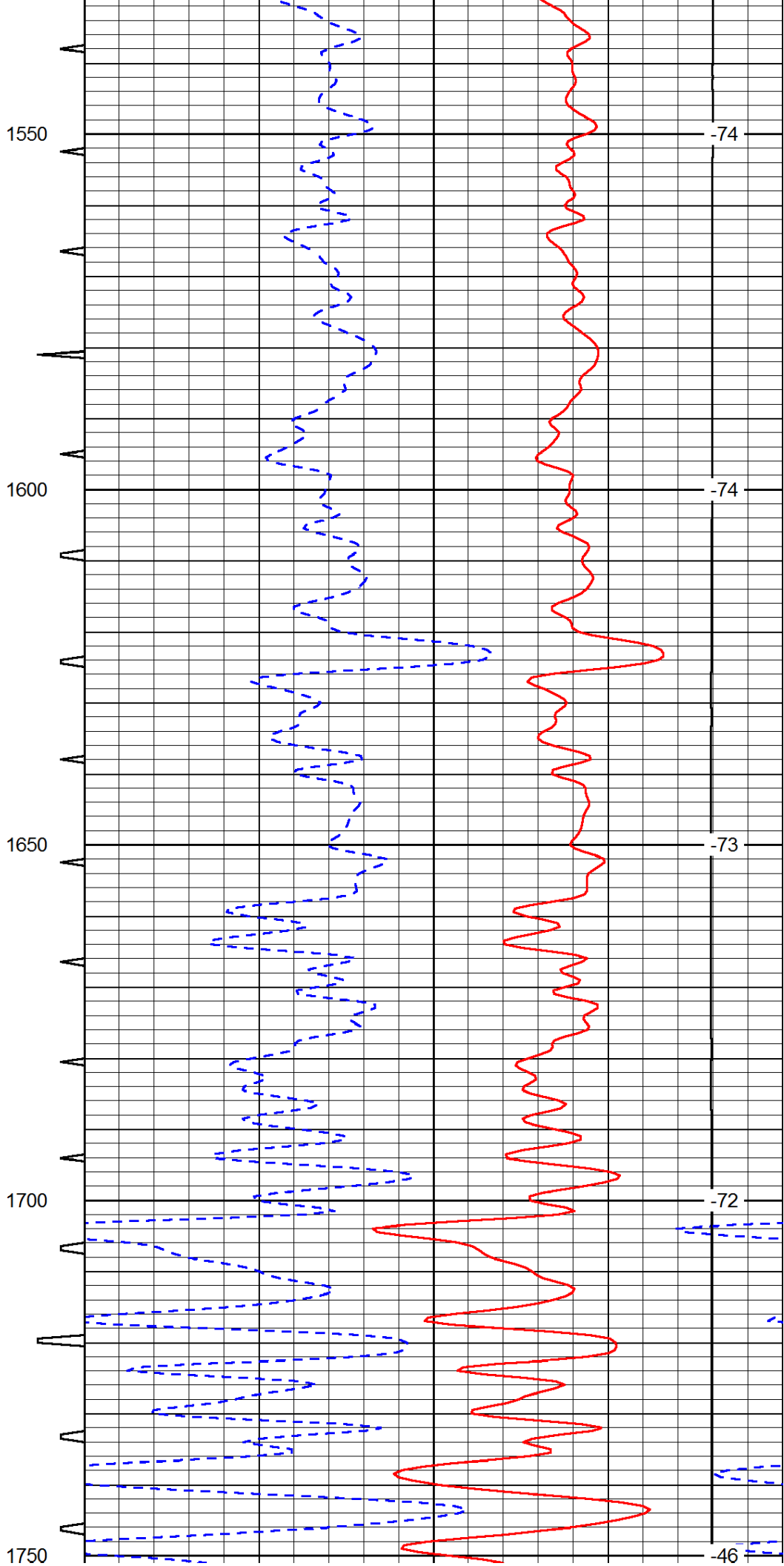
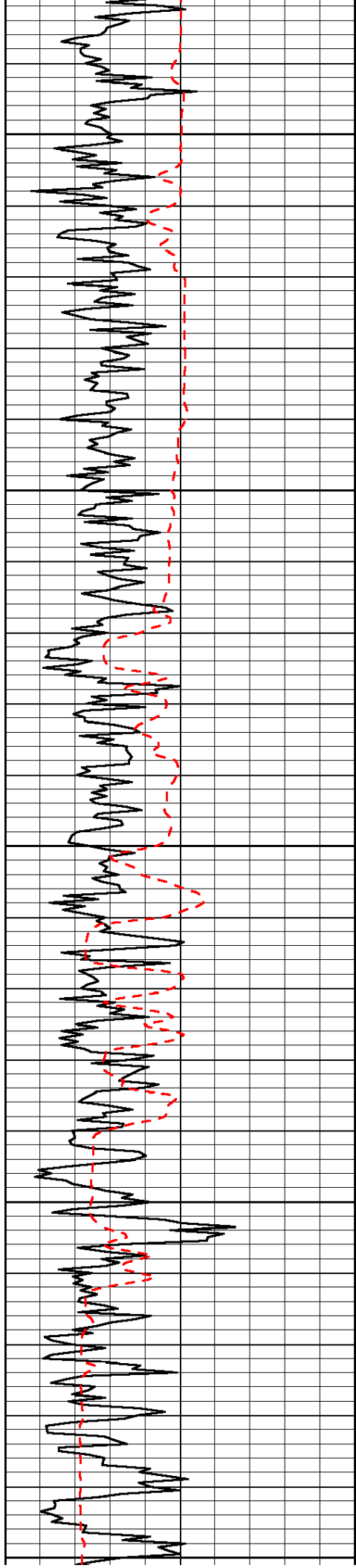
Database File: c:\warrior\data\fg holl_schmidt trust a # 1-11\fg_holl_schmidt_trust_a_1_11hd.db
 Dataset Pathname: DIL\fgstk
 Presentation Format: sonic
 Dataset Creation: Mon Aug 18 21:26:43 2014
 Charted by: Depth in Feet scaled 1:240

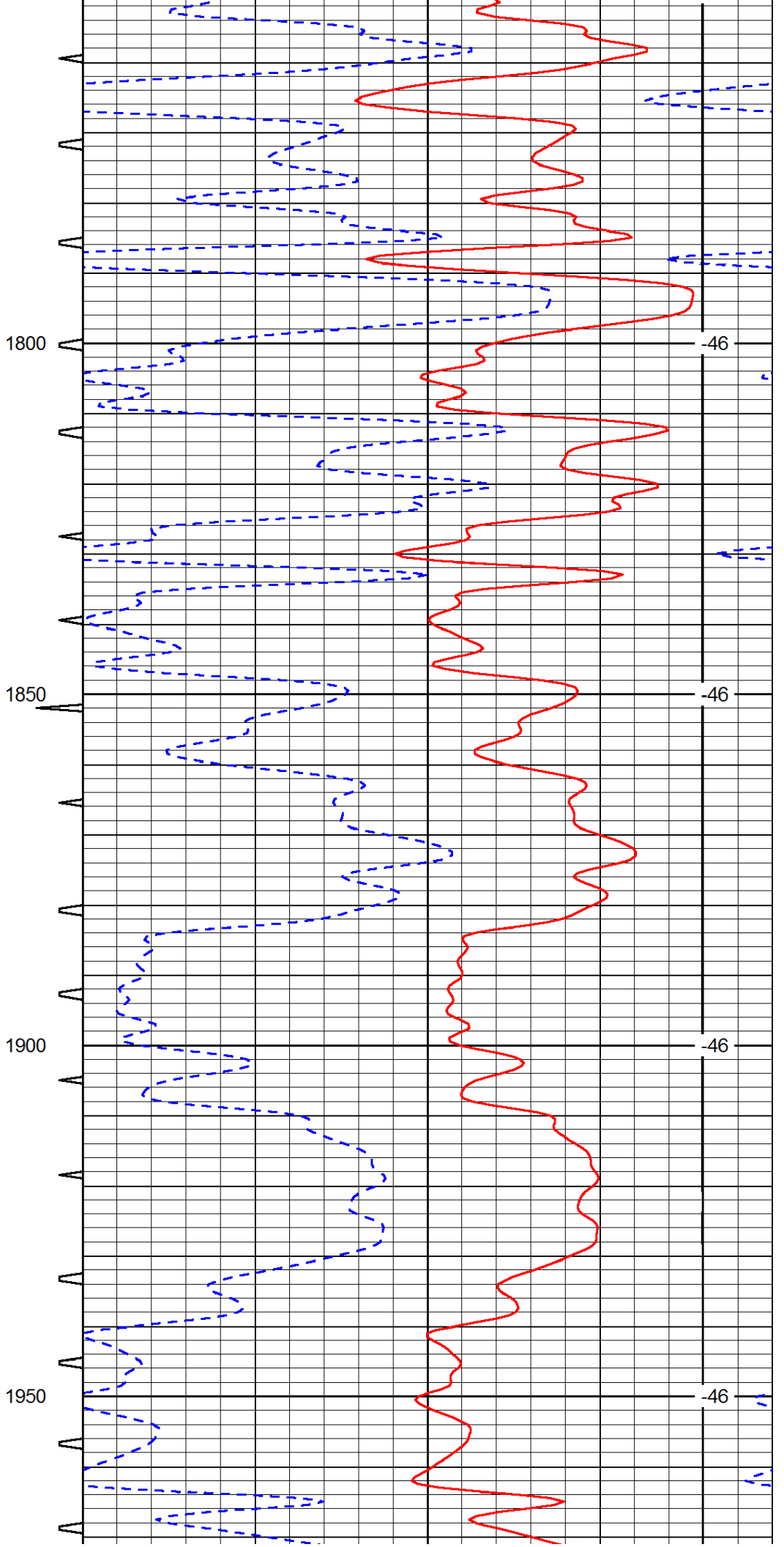
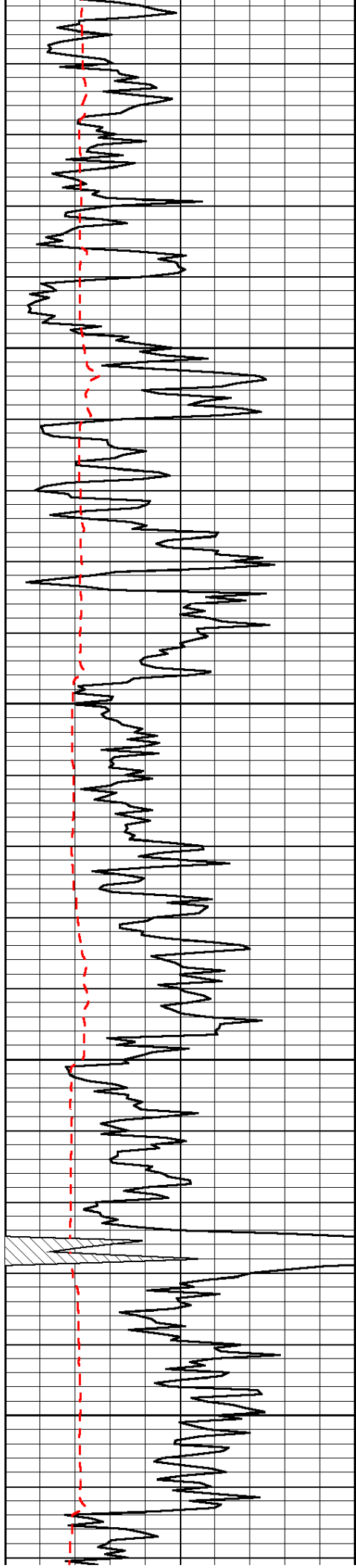
0	Gamma Ray	150	Sonic Int	140	Delta Time (usec/ft)	40
150	Gamma Ray	300	5	0	SPOR	-10
6	Caliper (GAPI)	16		15000	LTEN (lb)	0

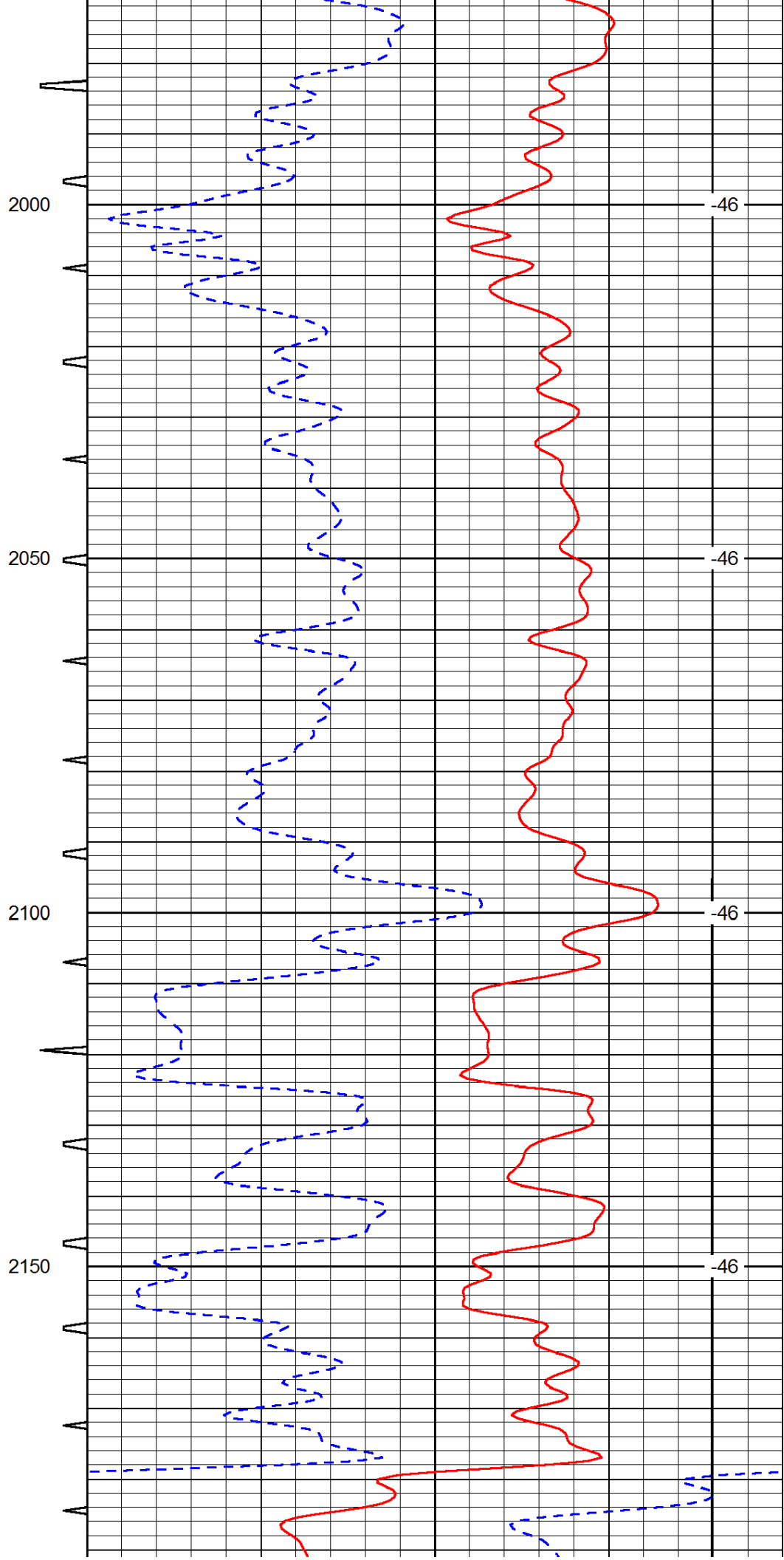
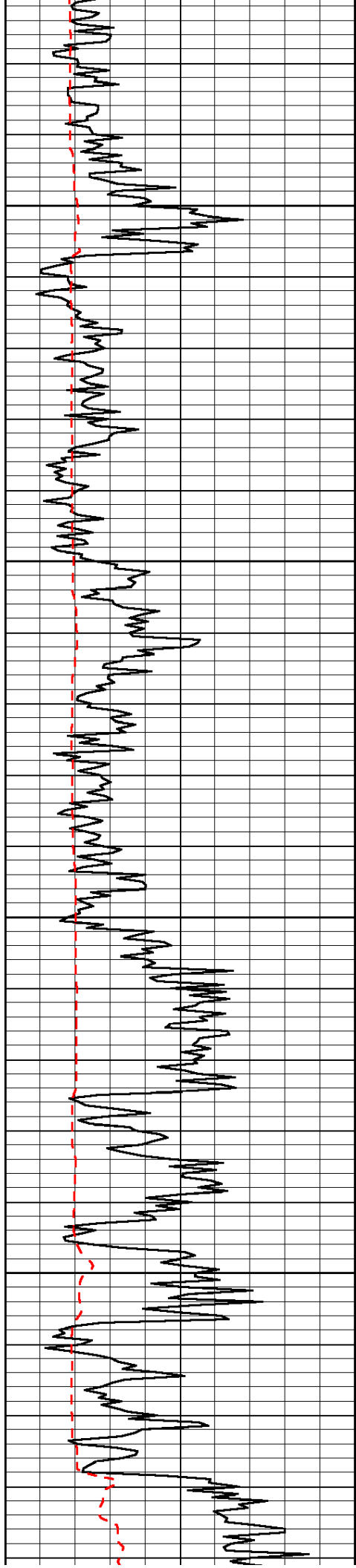


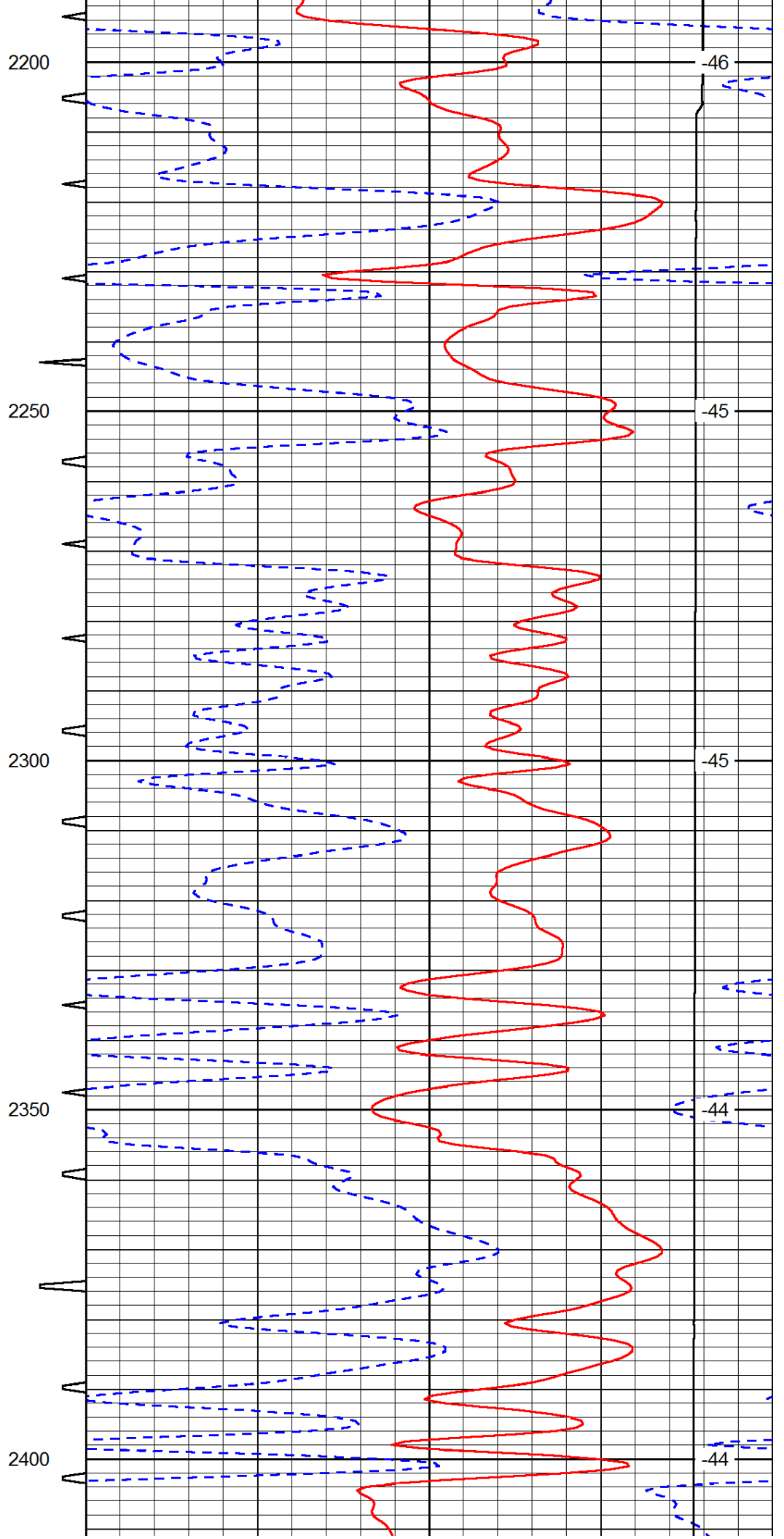
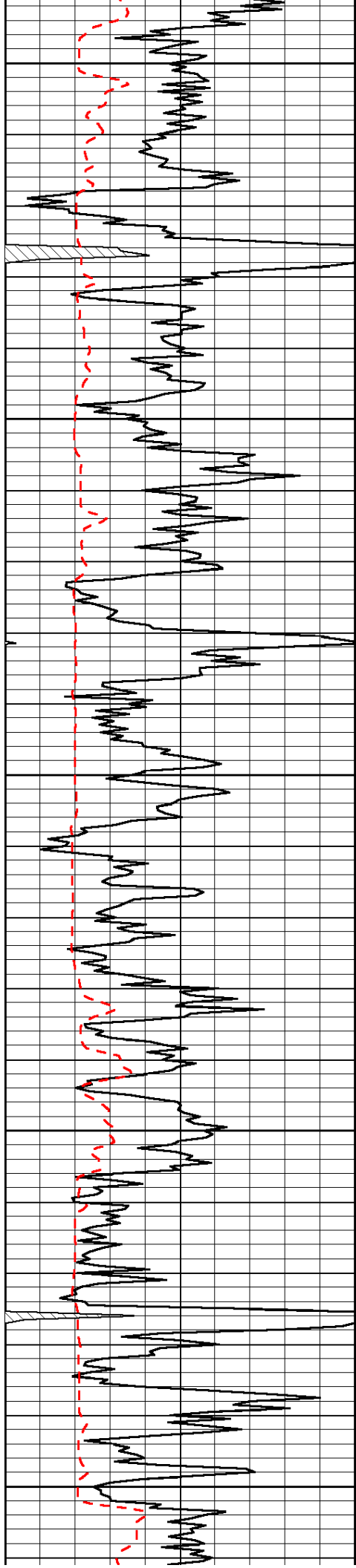


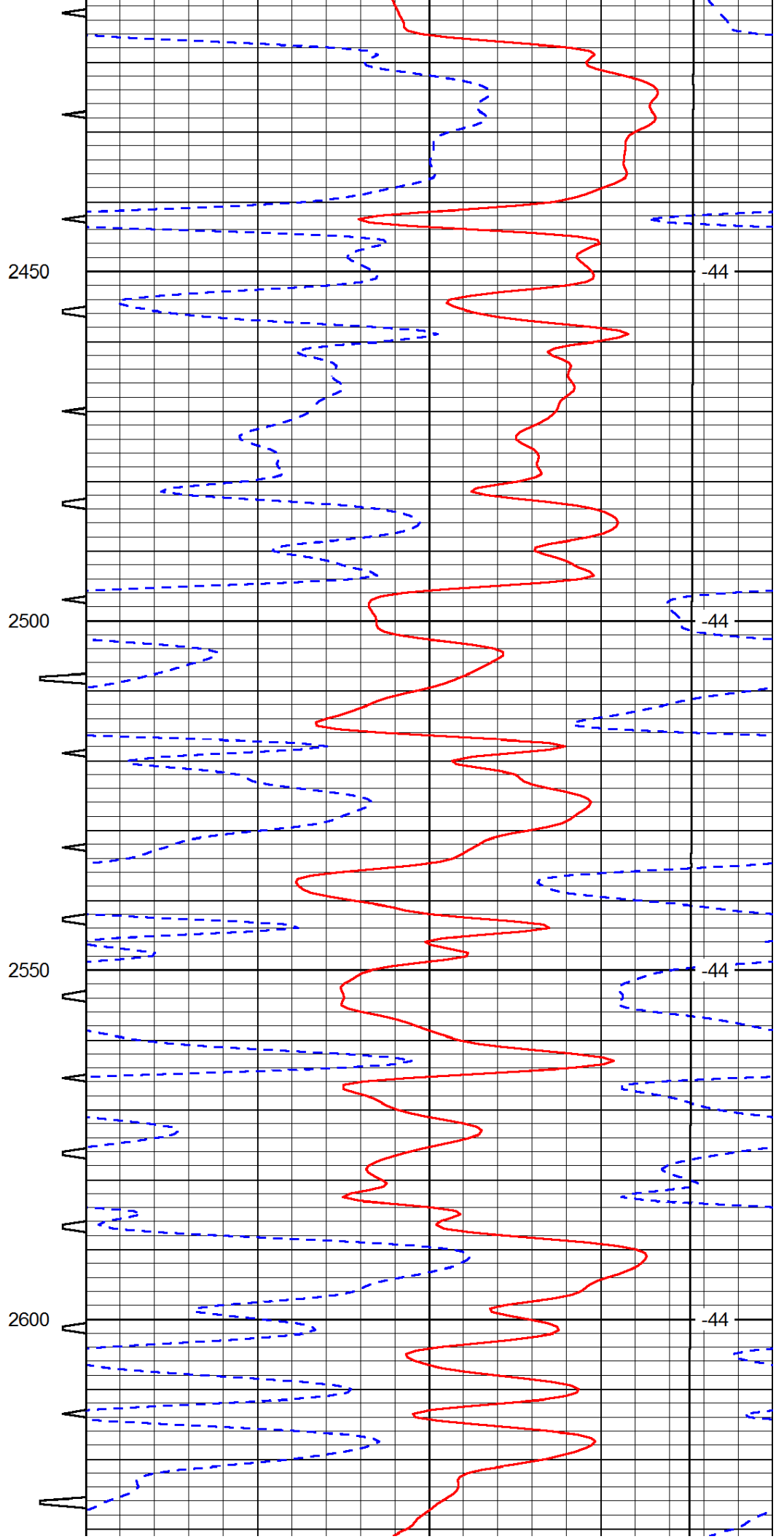
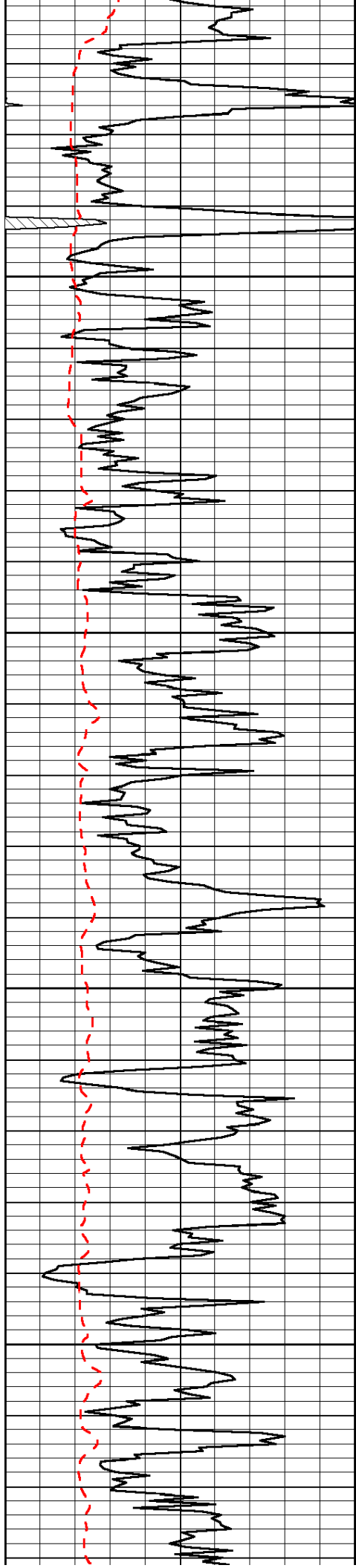


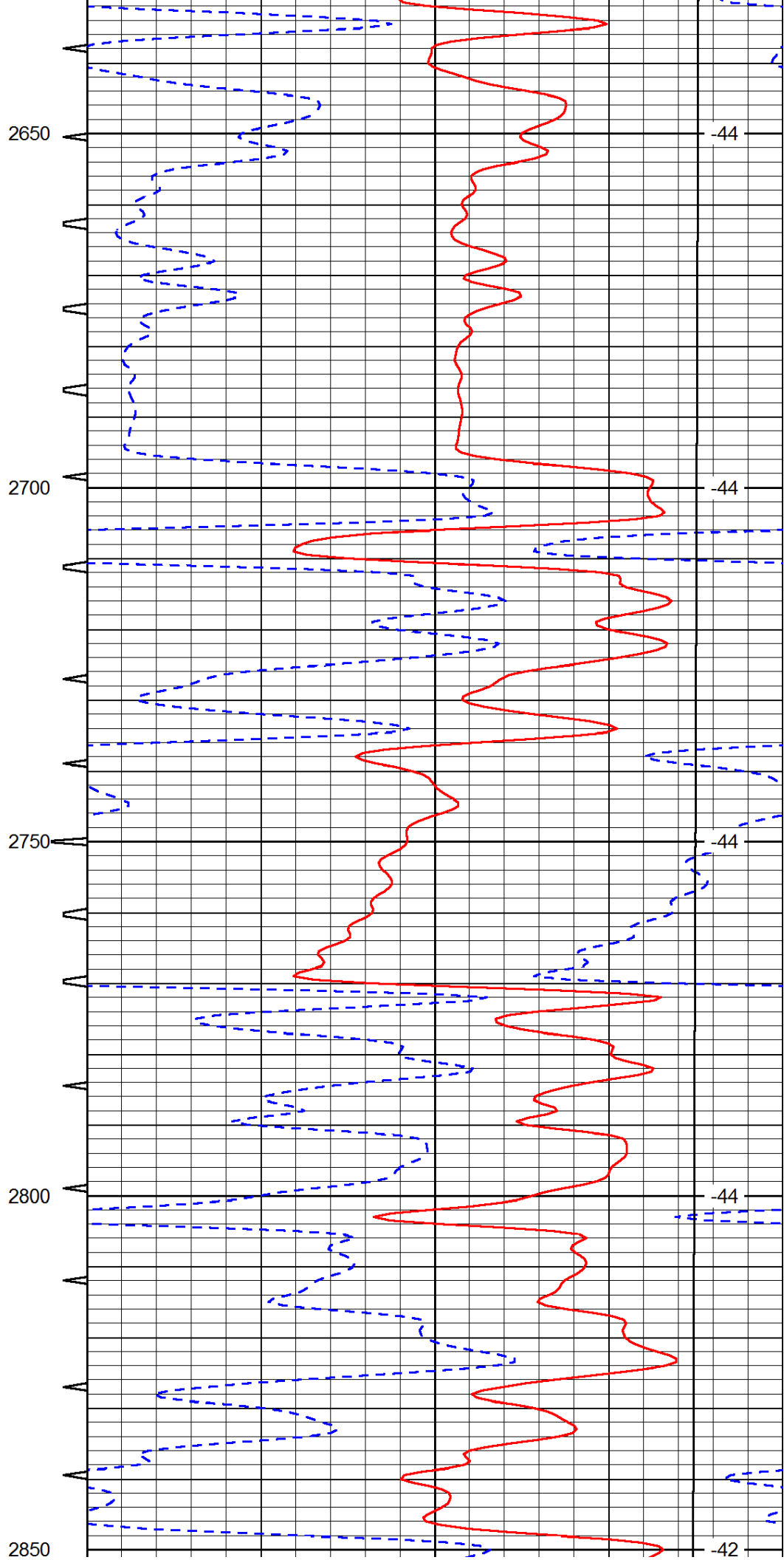
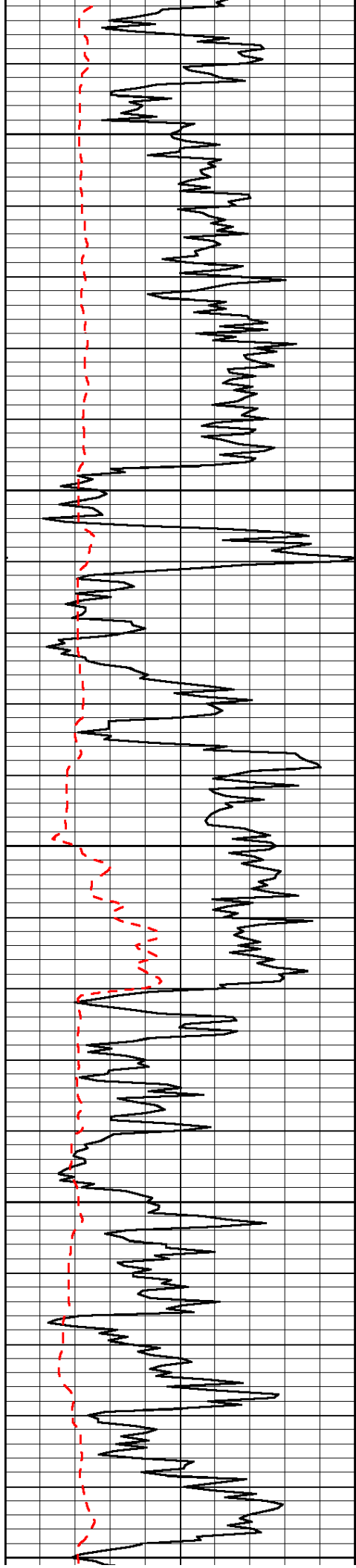


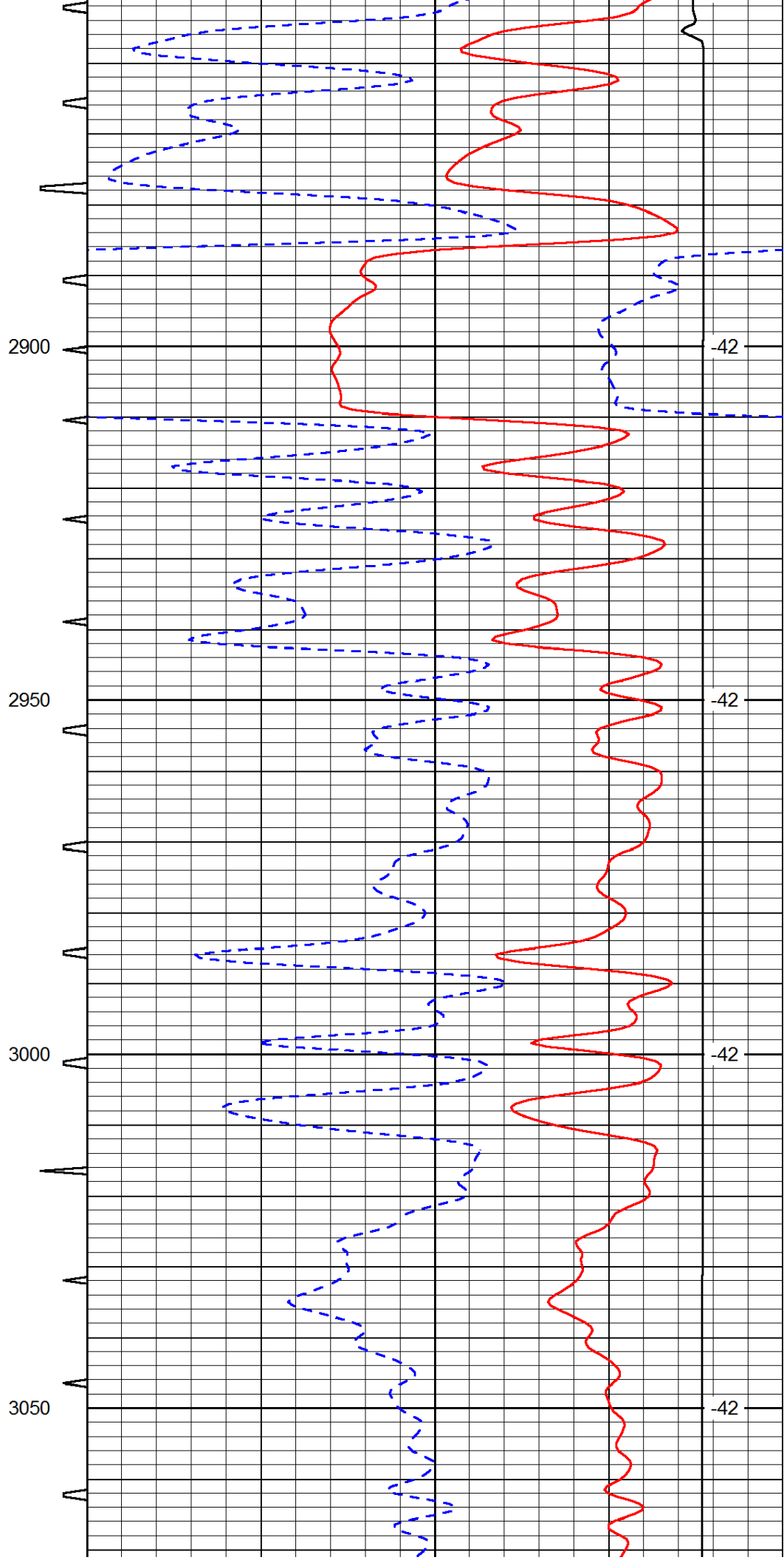
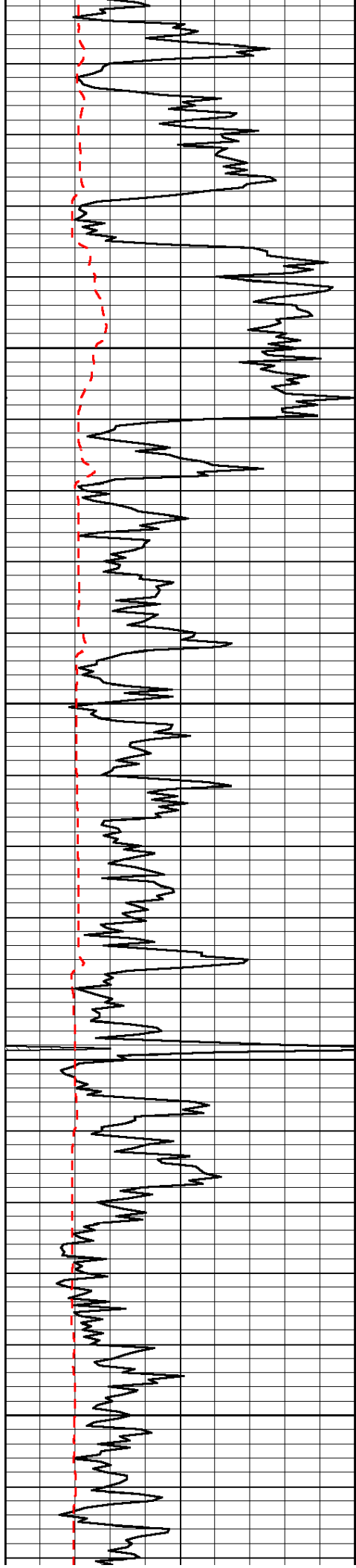


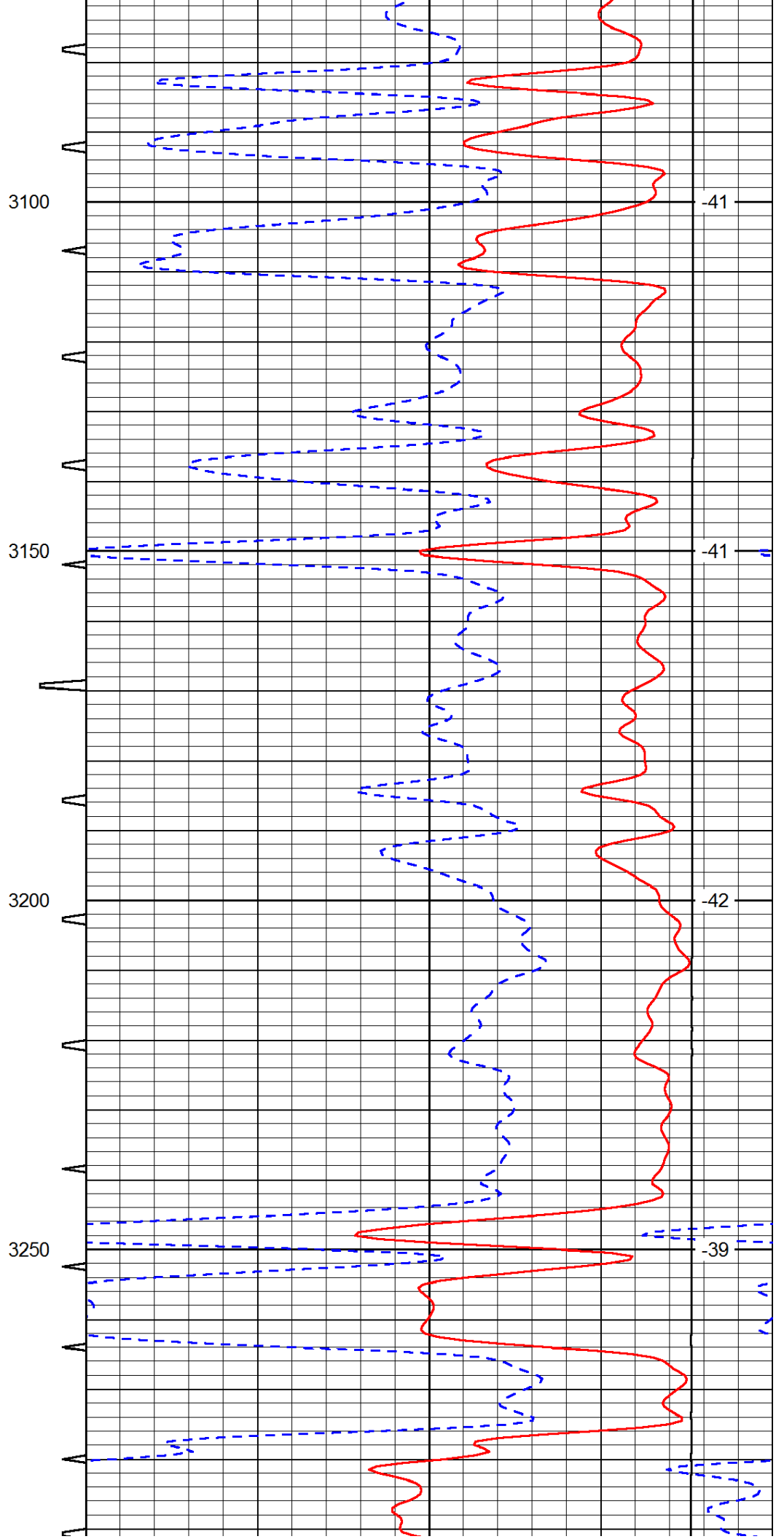
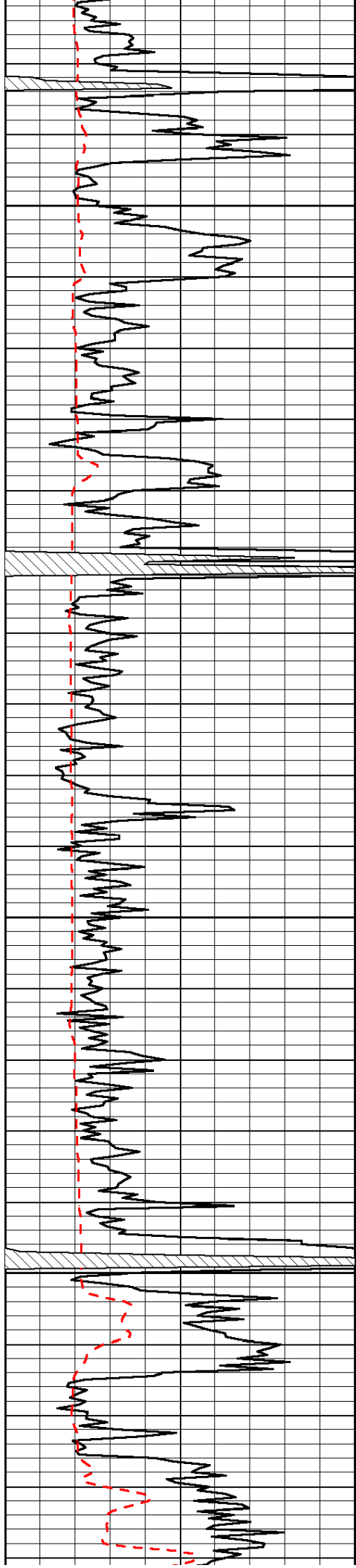


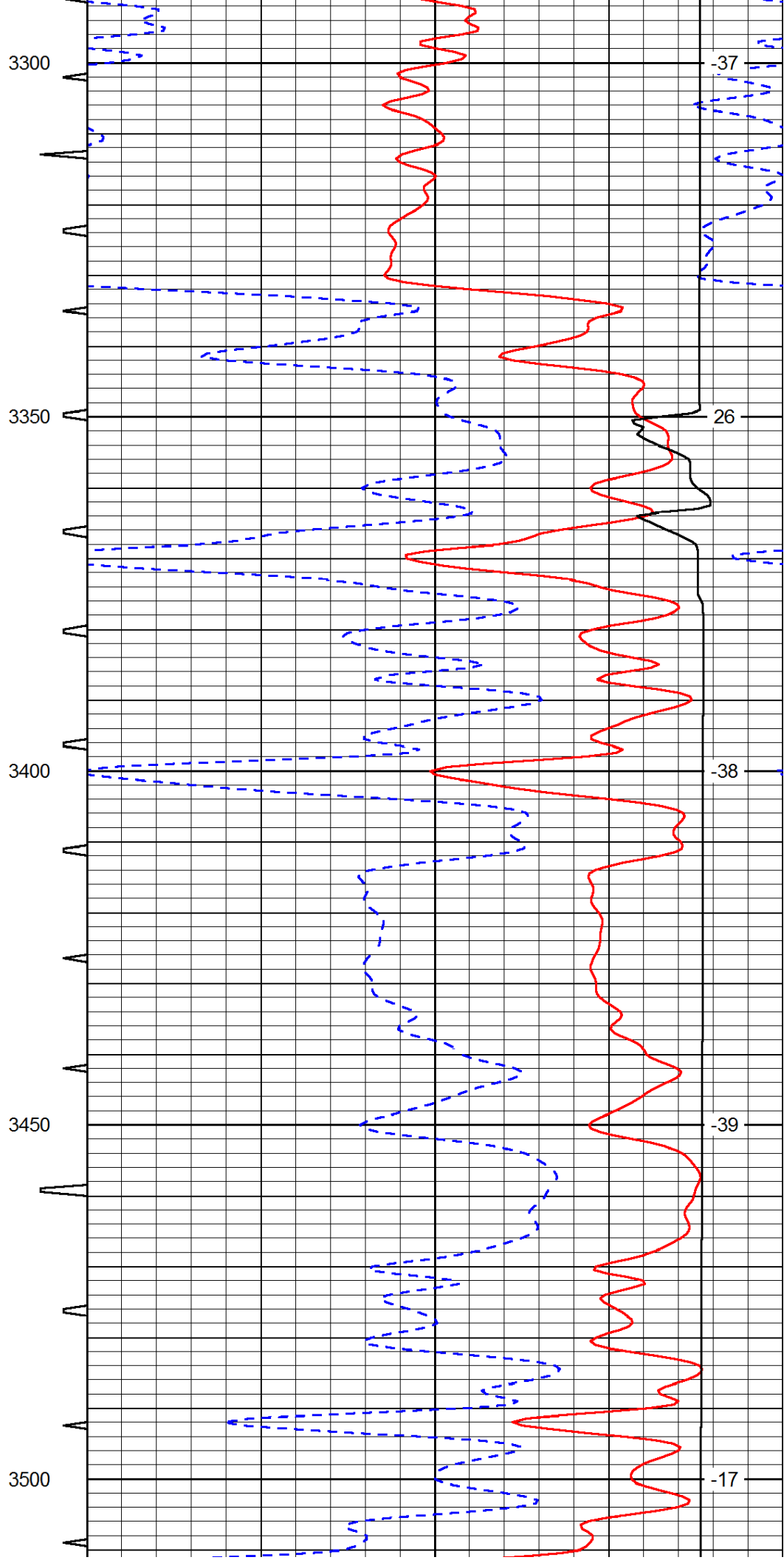
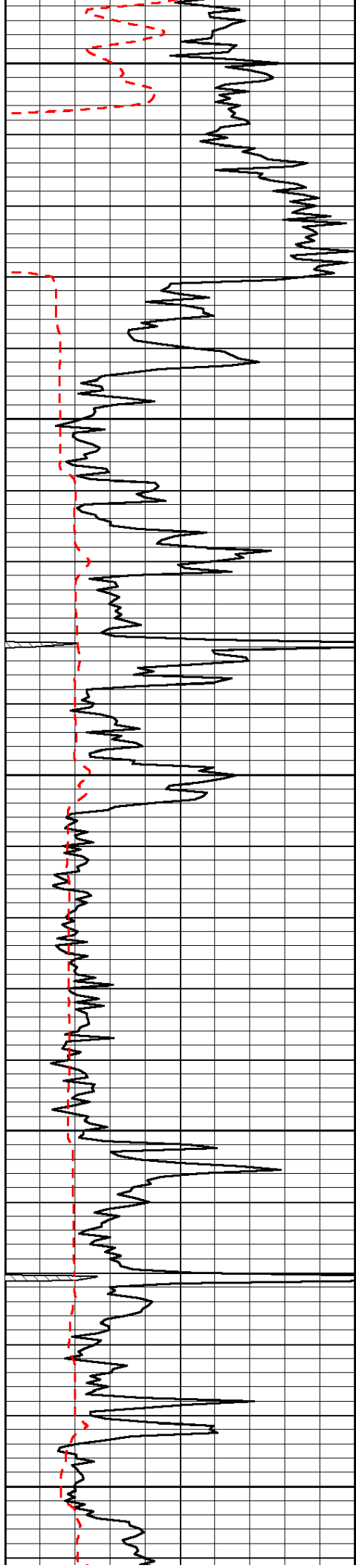


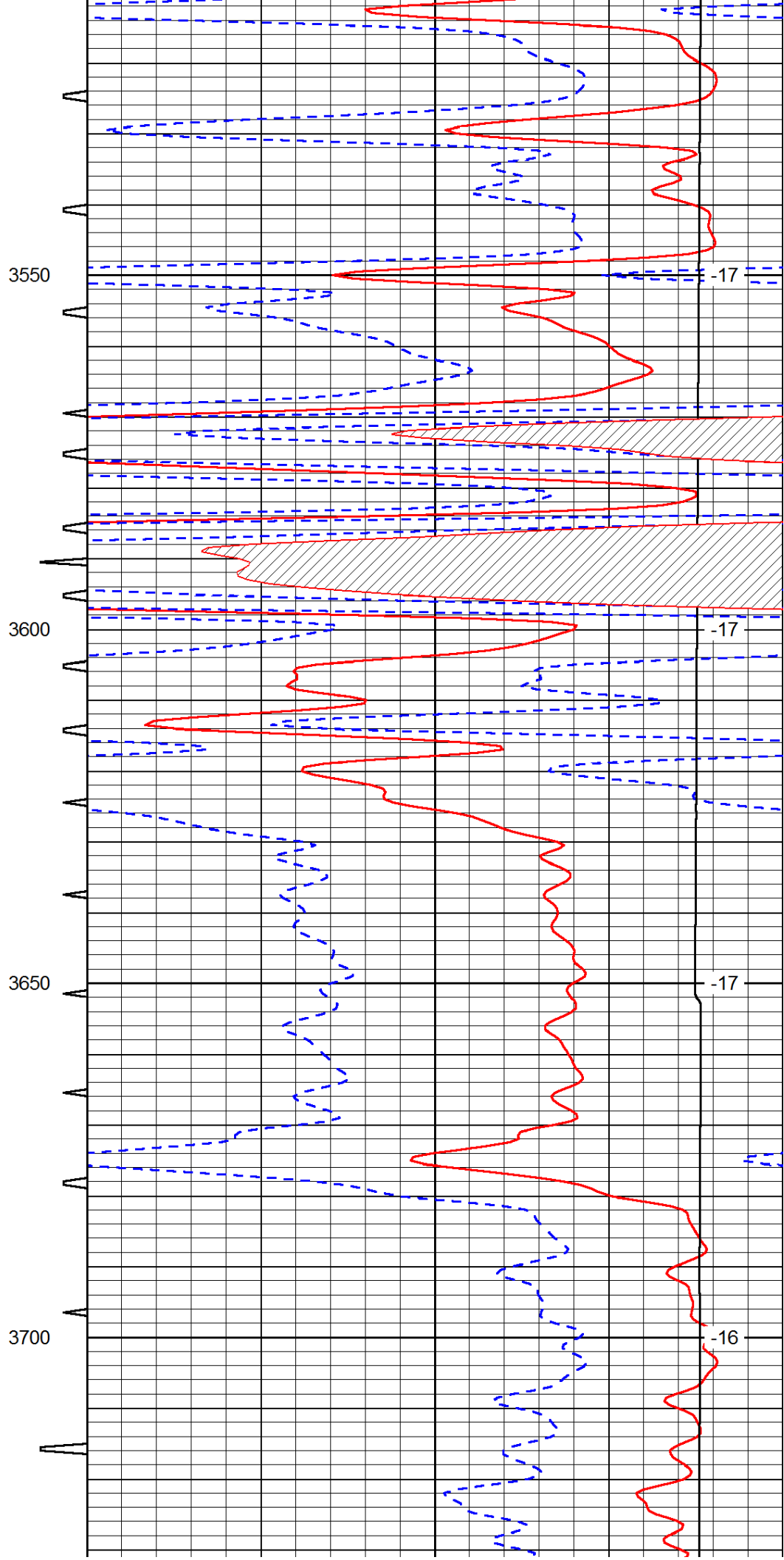
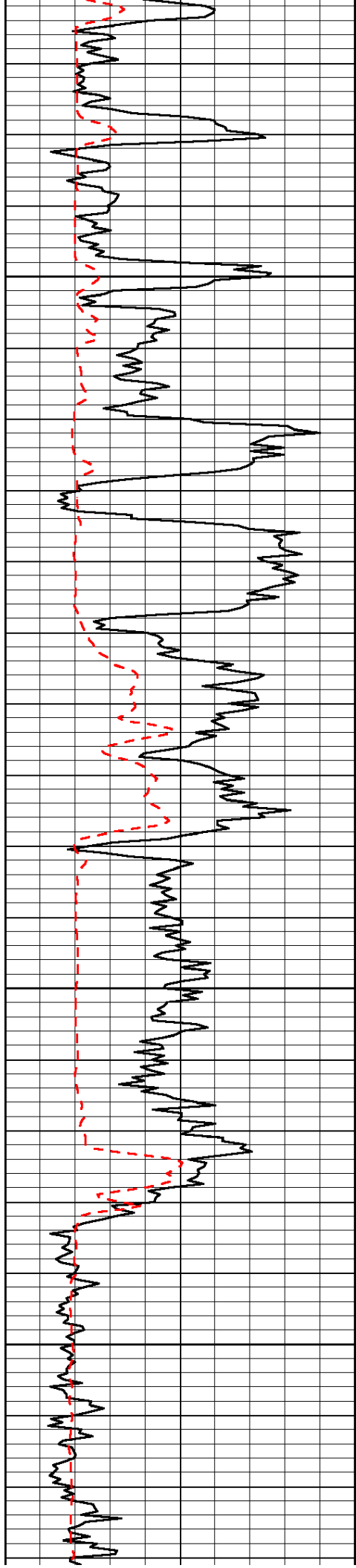


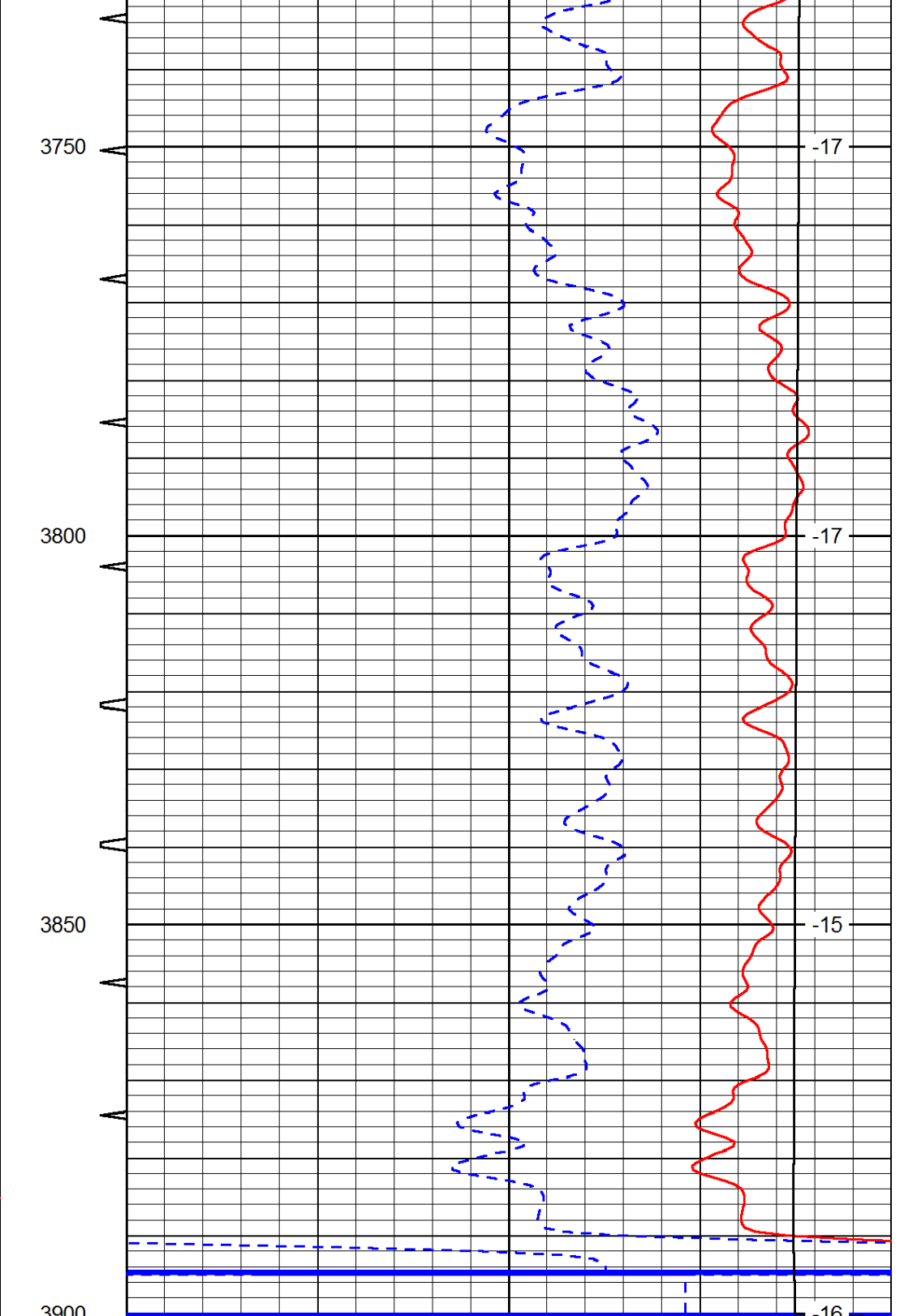
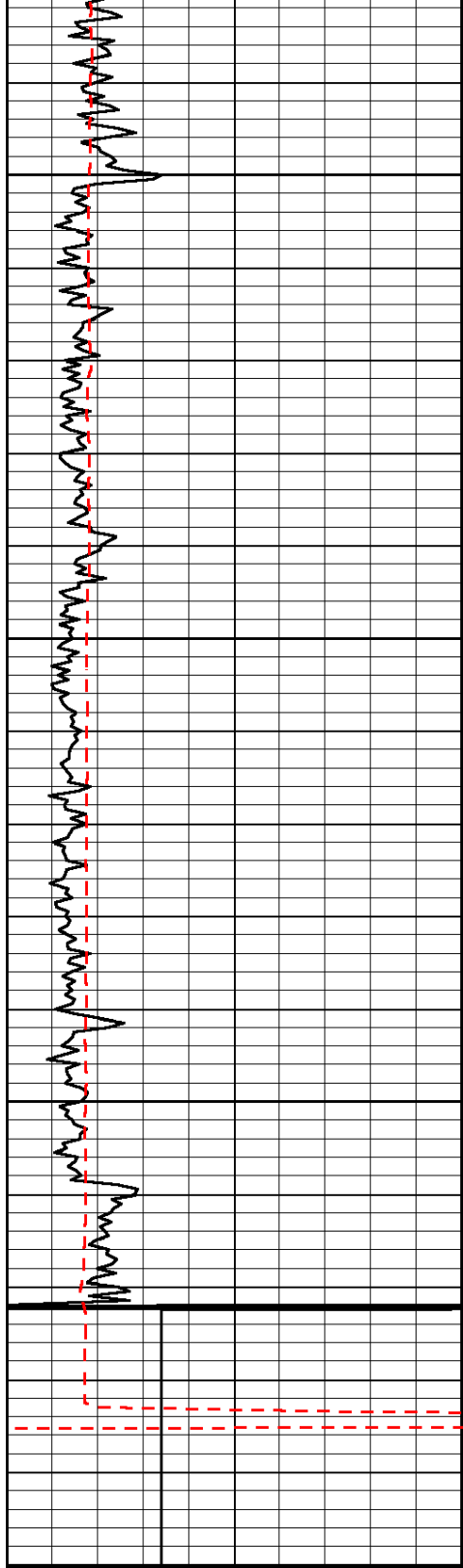












0	Gamma Ray	150	Sonic Int	140	Delta Time (usec/ft)	40
150	Gamma Ray	300	5	0	SPOR	-10
6	Caliper (GAPI)	16		15000	LTEN (lb)	0
LSPD						