



Pioneer Energy Services

## Dual Compensated Porosity Log

**Company** Larson Engineering, Inc.  
**Well** Judy Unit #1-32  
**Field** Wildcat  
**County** Lane **State** Kansas  
**Location** SW NW NW SW  
 2280' FSL / 37' FWL  
**Sec:** 32 **Twp:** 18S **Rge:** 27W  
**Other Services** DIL/MEL  
**Elevation** 2697

**API No.** 15-101-22532-00-00  
**Permanent Datum** Ground Level **Elevation** 2697  
**Log Measured From** Kelly Bushing **7 Ft. Above Perm. Datum**  
**Drilling Measured From** Kelly Bushing **K.B. 2704**  
**D.F. 2697**  
**G.L. 2697**

Date	8/18/2014	
Run Number	One	
Type Log	CNL / CDL	
Depth Driller	4643	
Depth Logger	4642	
Bottom Logged Interval	4621	
Top Logged Interval	3600	
Type Fluid In Hole	Chemical	
Salinity, PPM CL	4000	
Density	9.2	
Level	Full	
Max. Rec. Temp. F	122	
Operating Rig Time	4 Hours	
Equipment -- Location	15 Hays	
Recorded By	R. Barnhart	
Witnessed By	Vern Schrag	

Borehole Record		Casing Record					
Run No	Bit	From	To	Size	Wgt.	From	To
One	12.25	00	262	8.625	23#	00	262
Two	7.875	262	TD				

<<< Fold Here >>>

All interpretations are opinions based on inferences from electrical or other measurements and we cannot and do not guarantee the accuracy or correctness of any interpretation, and we shall not, except in the case of gross or willful negligence on our part, be liable or responsible for any loss, costs, damages, or expenses incurred or sustained by anyone resulting from any interpretation made by any of our officers, agents or employees. These interpretations are also subject to our general terms and conditions set out in our current Price Schedule.

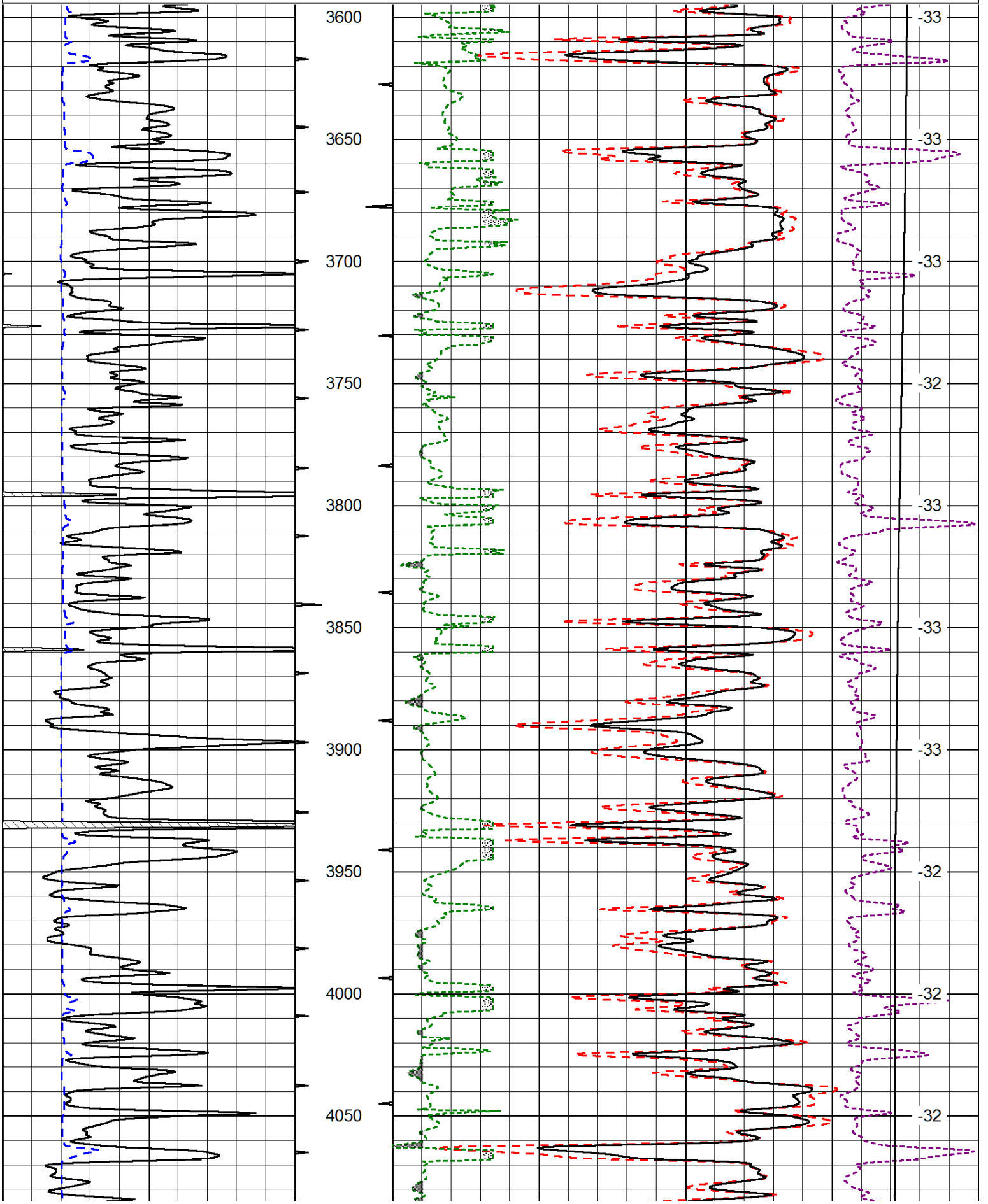
**Comments**

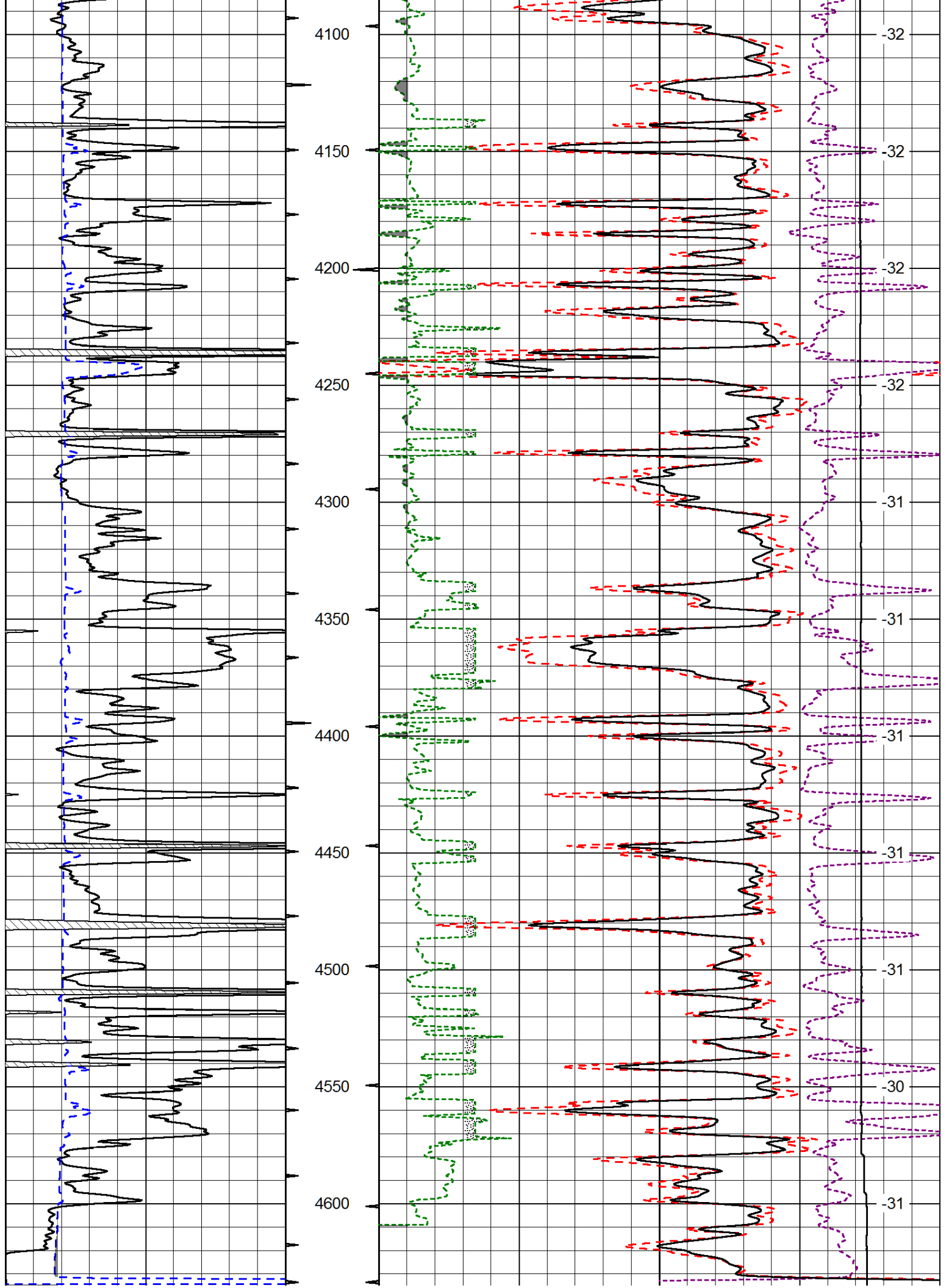
Thank you for using Log-Tech, Inc.  
 (785) 625-3858  
  
 Dighton, KS:  
 6E to Quantum Rd., 3S, 3/4E, N into

Database File: laron\_jhd.db  
 Dataset Pathname: dil/lrsmain  
 Presentation Format: cdl  
 Dataset Creation: Sun Aug 17 23:45:43 2014  
 Charted by: Depth in Feet scaled 1:600

0	Gamma Ray	150
6	Caliper (GAPI)	16

30	Compensated Density		-10
2	Bulk Density		3
15000	Line Tension		0
2.625	DGA	3.425	-0.25
			Correction
			0.25
LSPD			





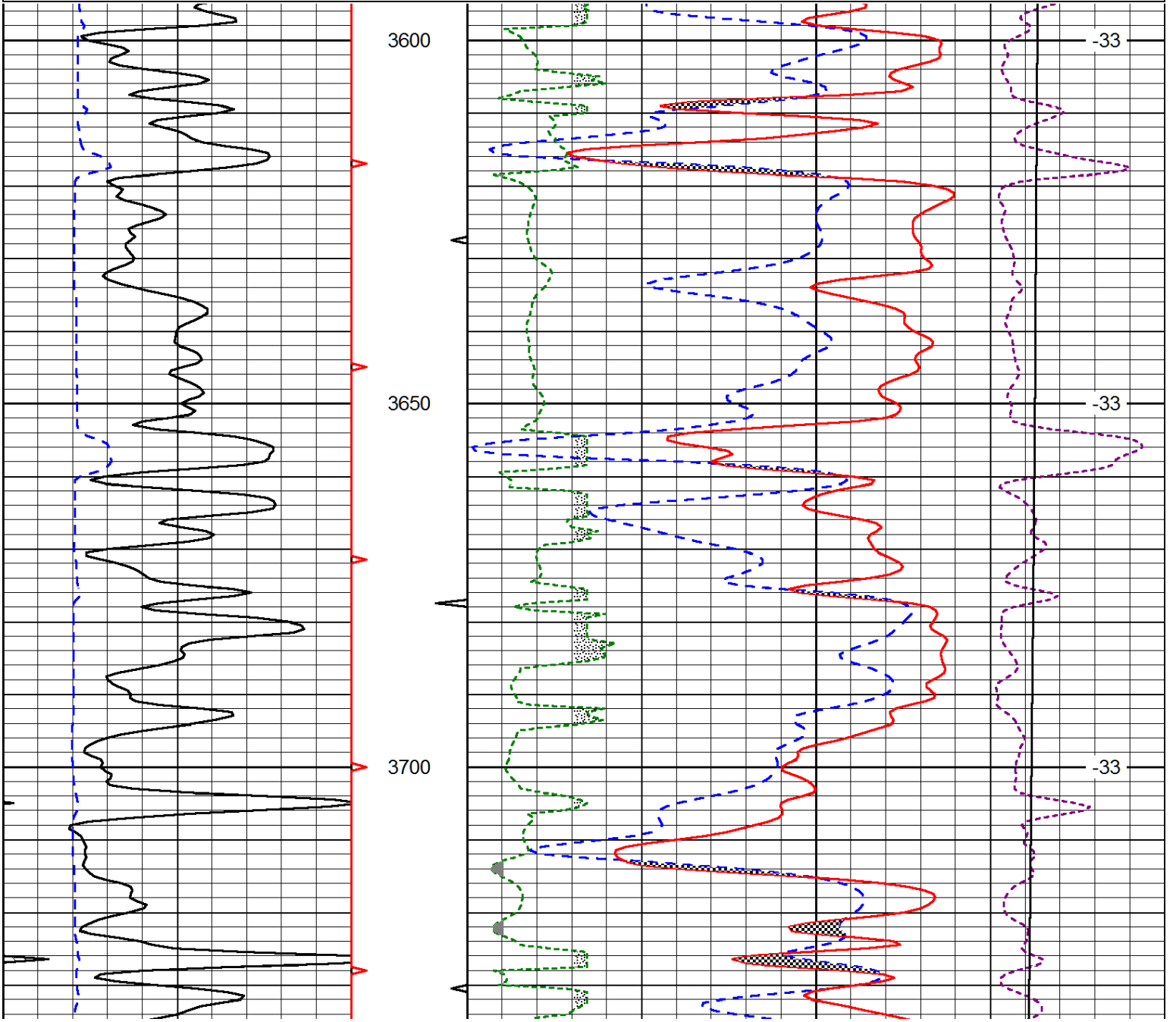
0	Gamma Ray	150
6	Caliper (GAPI)	16

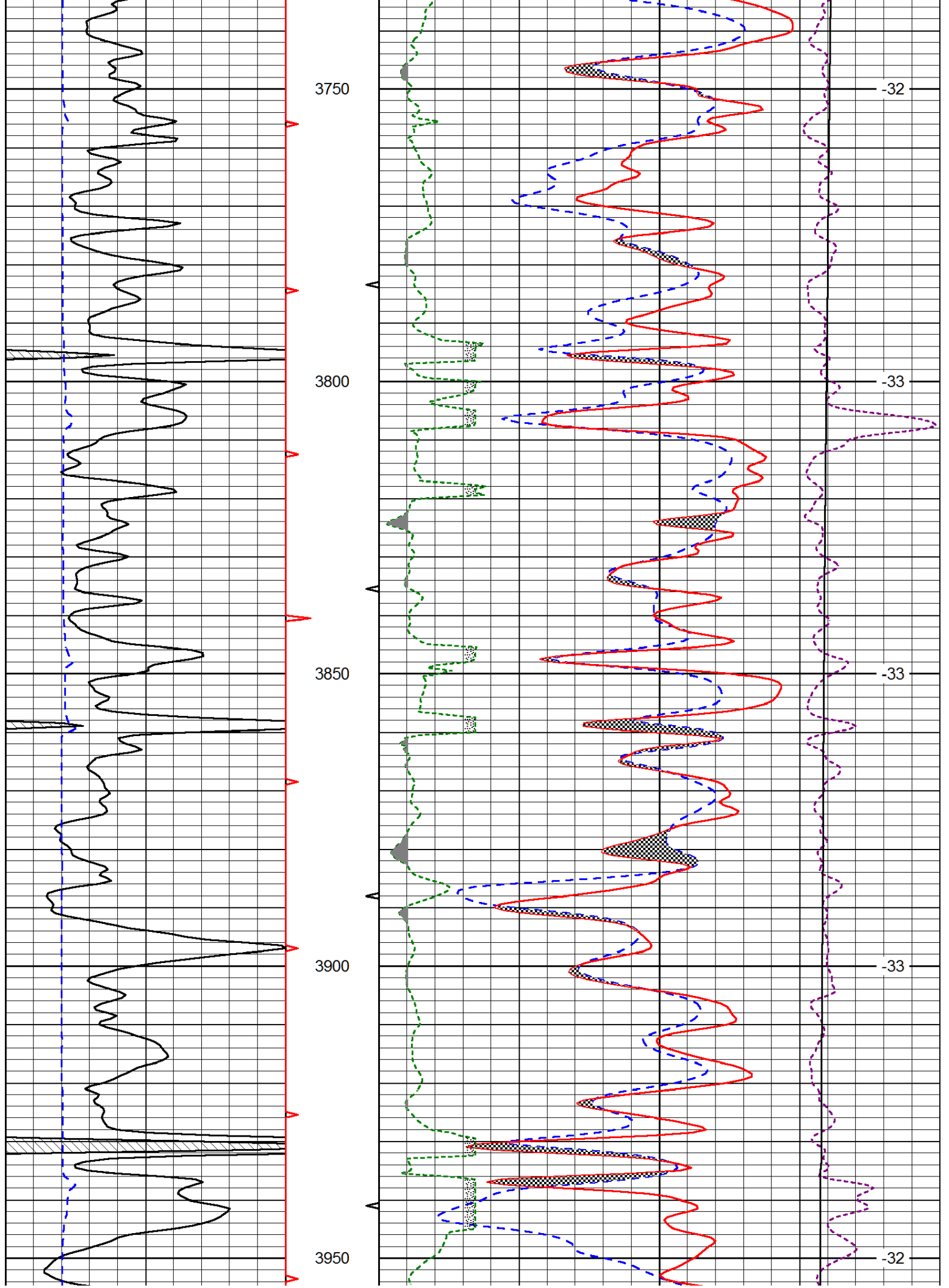
30	Compensated Density			-10
2	Bulk Density			3
15000	Line Tension			0
2.625	DGA	3.425	-0.25	Correction 0.25
LSPD				

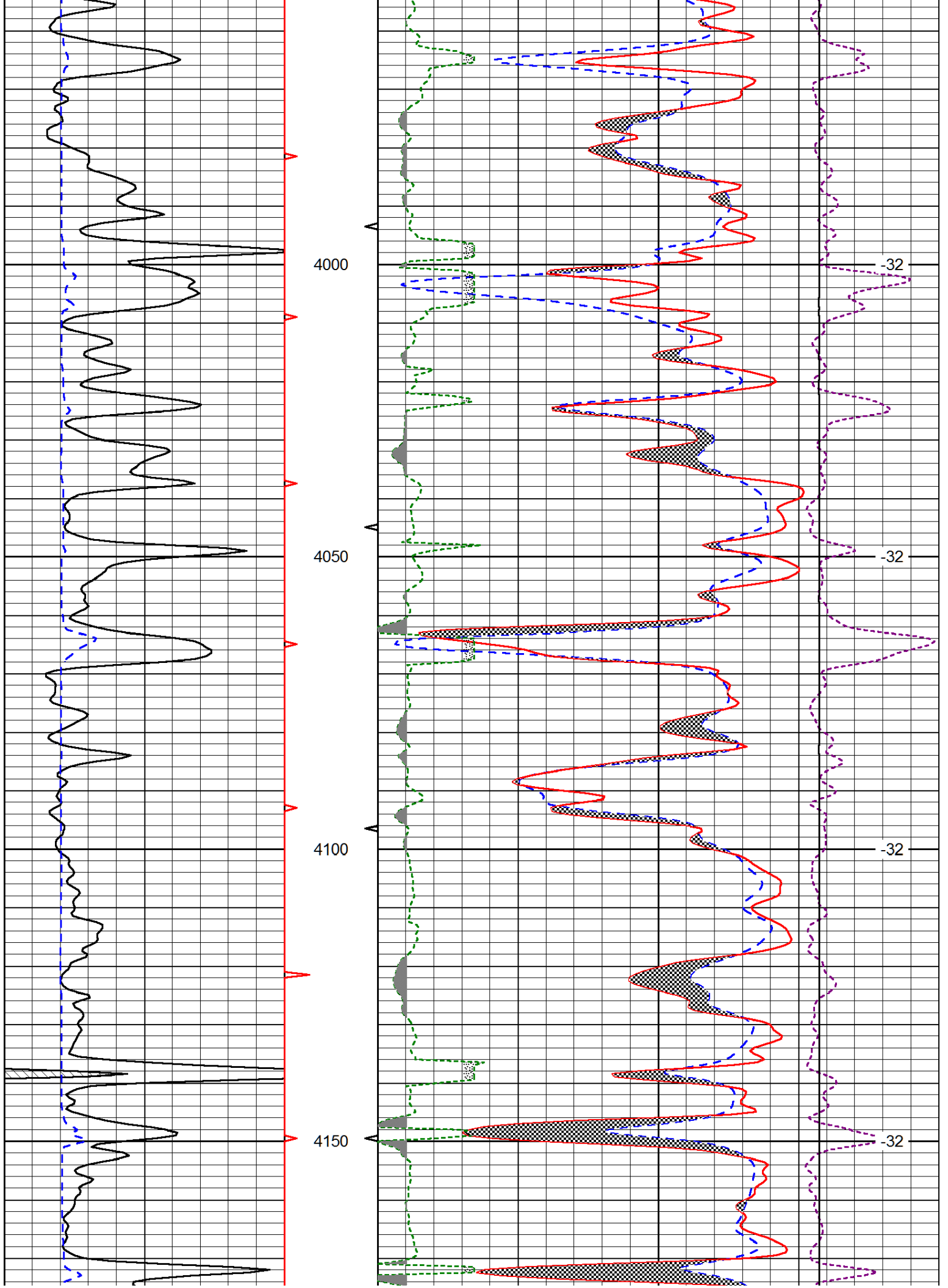
Database File: larsen\_jhd.db  
 Dataset Pathname: dil/lrsmain  
 Presentation Format: cndlspec  
 Dataset Creation: Sun Aug 17 23:45:43 2014  
 Charted by: Depth in Feet scaled 1:240

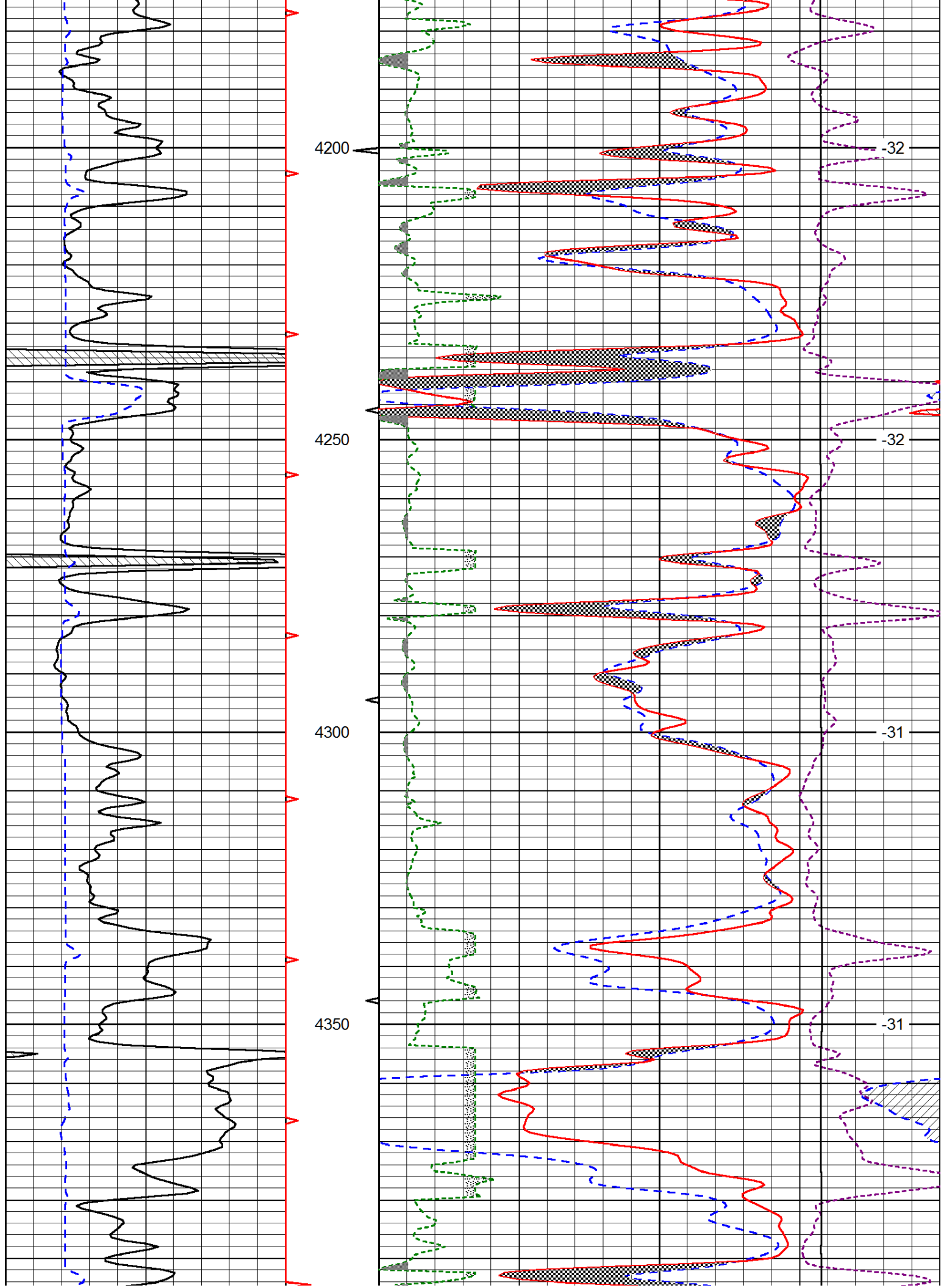
0	Gamma Ray	150
6	Caliper (GAPI)	16

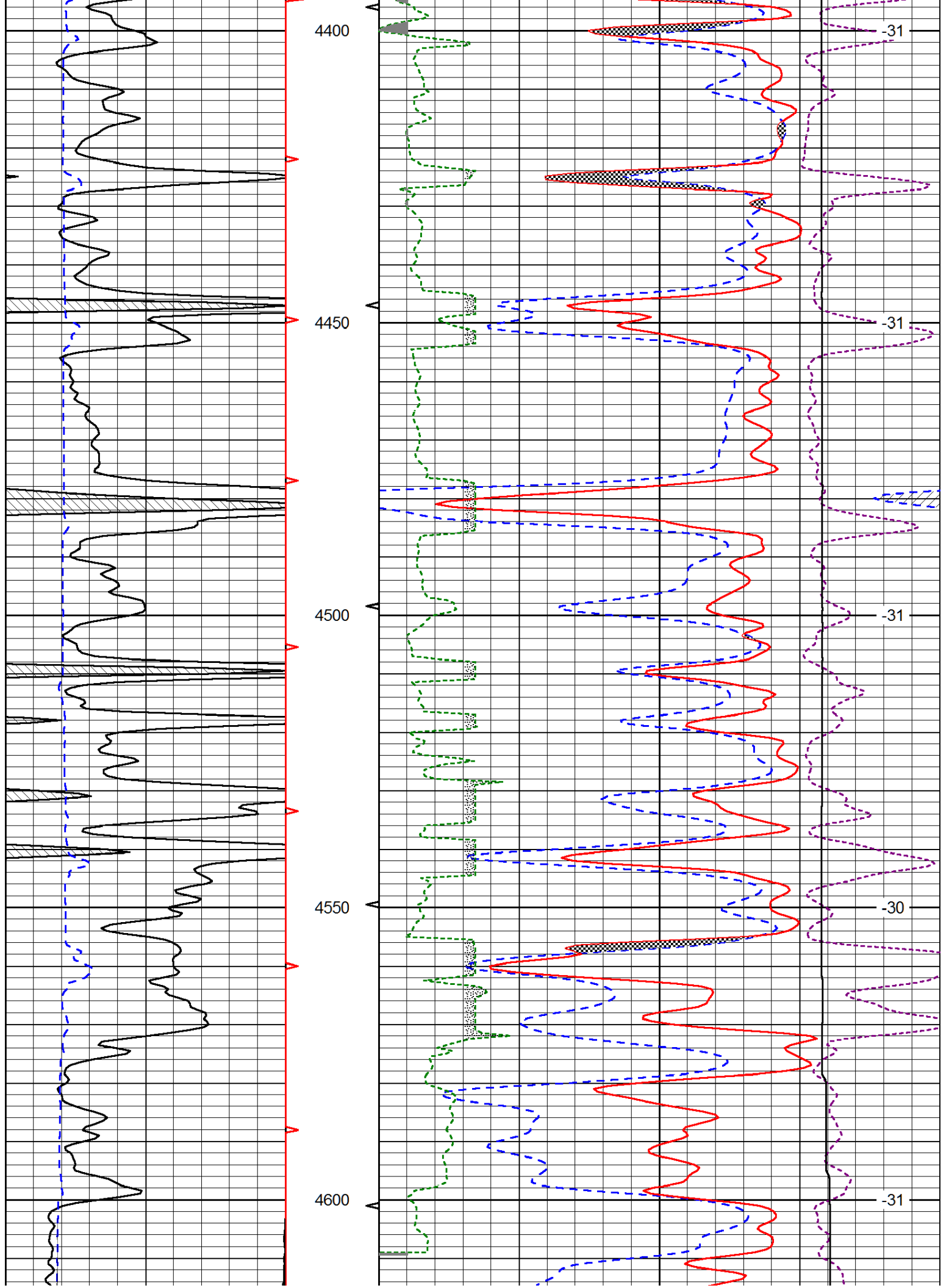
30	CNLS			-10
30	Compensated Density (2.71 ma)			-10
2.625	DGA	3.425	-0.25	Correction 0.25
10000	Line Tension			0
LSPD				

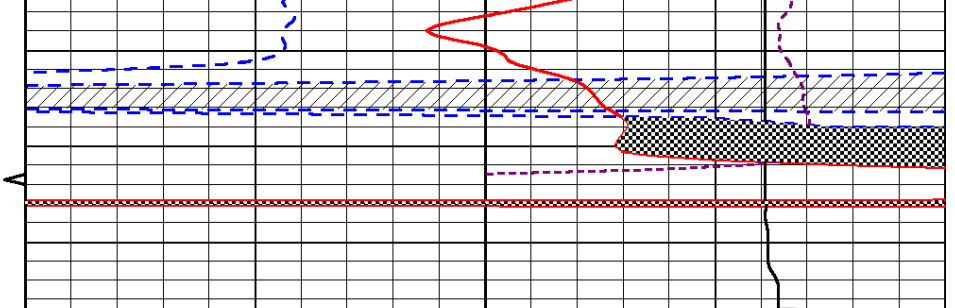
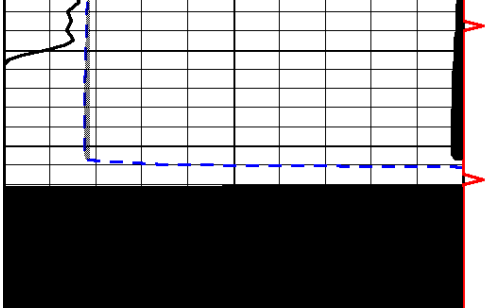












0	Gamma Ray	150
6	Caliper (GAPI)	16

30	CNLS		-10
30	Compensated Density (2.71 ma)		-10
2.625	DGA	3.425	-0.25
			Correction
			0.25
10000	Line Tension		0

LSPD