



Pioneer Energy Services

# Microresistivity Log

API No.	15-101-22532-00-00	
Company	Larson Engineering, Inc.	
Well	Judy Unit #1-32	
Field	Wildcat	
County	Lane	State
		Kansas
Location	SW NW NW SW 2280' FSL / 37' FWL	
Sec:	32	Twp: 18S Rge: 27W
Permanent Datum	Ground Level	Elevation 2697
Log Measured From	Kelly Bushing	7 Ft. Above Perm. Datum
Drilling Measured From	Kelly Bushing	
		K.B. 2704 D.F. 2697 G.L. 2697
		Other Services CNL / CDL DIL

Date	8/18/2014
Run Number	Two
Depth Driller	4643
Depth Logger	4642
Bottom Logged Interval	4641
Top Log Interval	3600
Casing Driller	8.625 @ 262
Casing Logger	260
Bit Size	7.875
Type Fluid in Hole	Chemical
Salinity, ppm CL	4000
Density / Viscosity	9.2   54
pH / Fluid Loss	10.5   7.6
Source of Sample	Flowline
Rm @ Meas. Temp	0.59 @ 90
Rmf @ Meas. Temp	0.44 @ 90
Rmc @ Meas. Temp	0.80 @ 90
Source of Rmf / Rmc	Charts
Rm @ BHT	0.43 @ 122
Operating Rig Time	4 Hours
Max Rec. Temp. F	122
Equipment Number	15
Location	Hays
Recorded By	R. Barnhart
Witnessed By	Vern Schrag

<<< Fold Here >>>

All interpretations are opinions based on inferences from electrical or other measurements and we cannot and do not guarantee the accuracy or correctness of any interpretation, and we shall not, except in the case of gross or willful negligence on our part, be liable or responsible for any loss, costs, damages, or expenses incurred or sustained by anyone resulting from any interpretation made by any of our officers, agents or employees. These interpretations are also subject to our general terms and conditions set out in our current Price Schedule.

### Comments

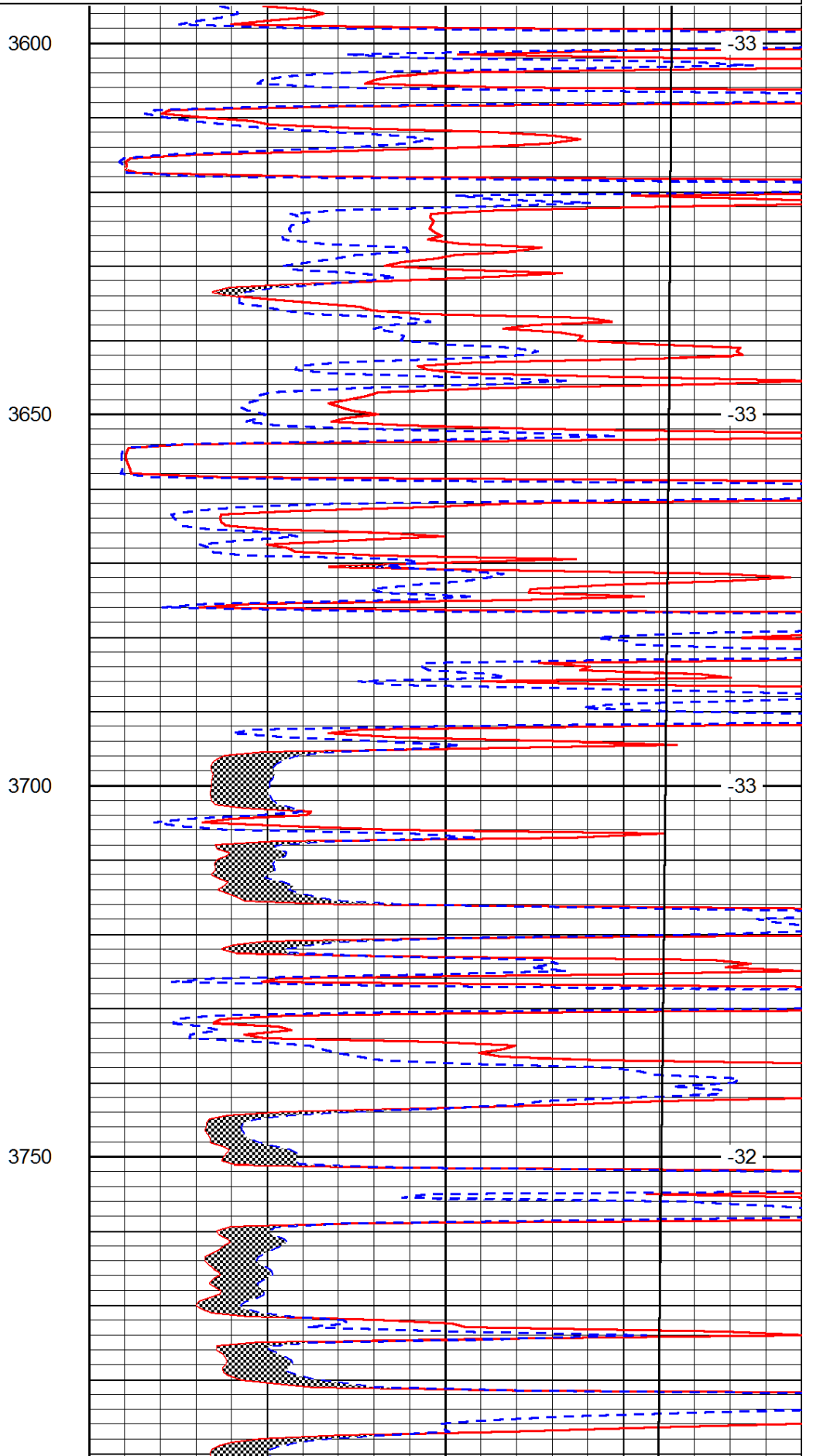
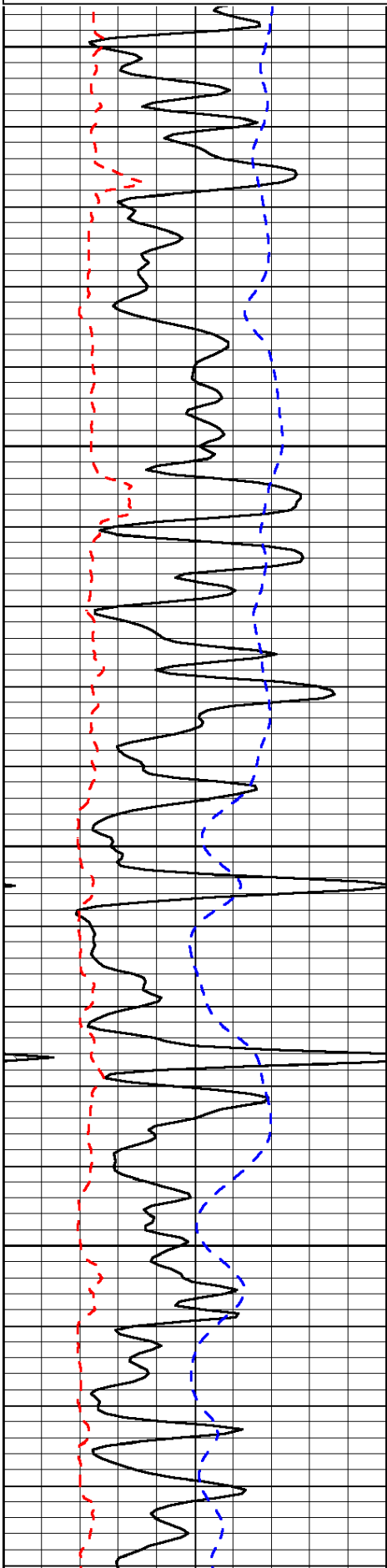
Thank you for using Log-Tech, Inc.  
 (785) 625-3858  
 Dighton, KS:  
 6E to Quantum Rd., 3S, 3/4E, N into

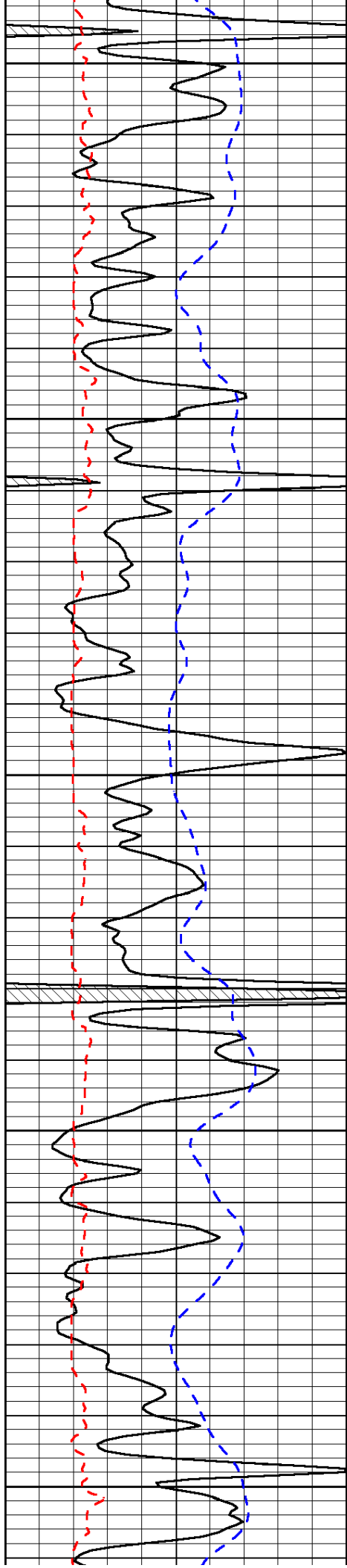
Database File: laron\_jhd.db  
 Dataset Pathname: dil/lrsmain  
 Presentation Format: micro  
 Dataset Creation: Sun Aug 17 23:45:43 2014  
 Charted by: Depth in Feet scaled 1:240

0	Gamma Ray	150
6	MCAL (GAPI)	16
2.875	Mud Cake (GAPI)	7.875
-200	SP (mV)	0

0	Micro Inverse 1 X 1	40
0	Micro Normal 2"	40
10000	Line Weight	0

LSPD





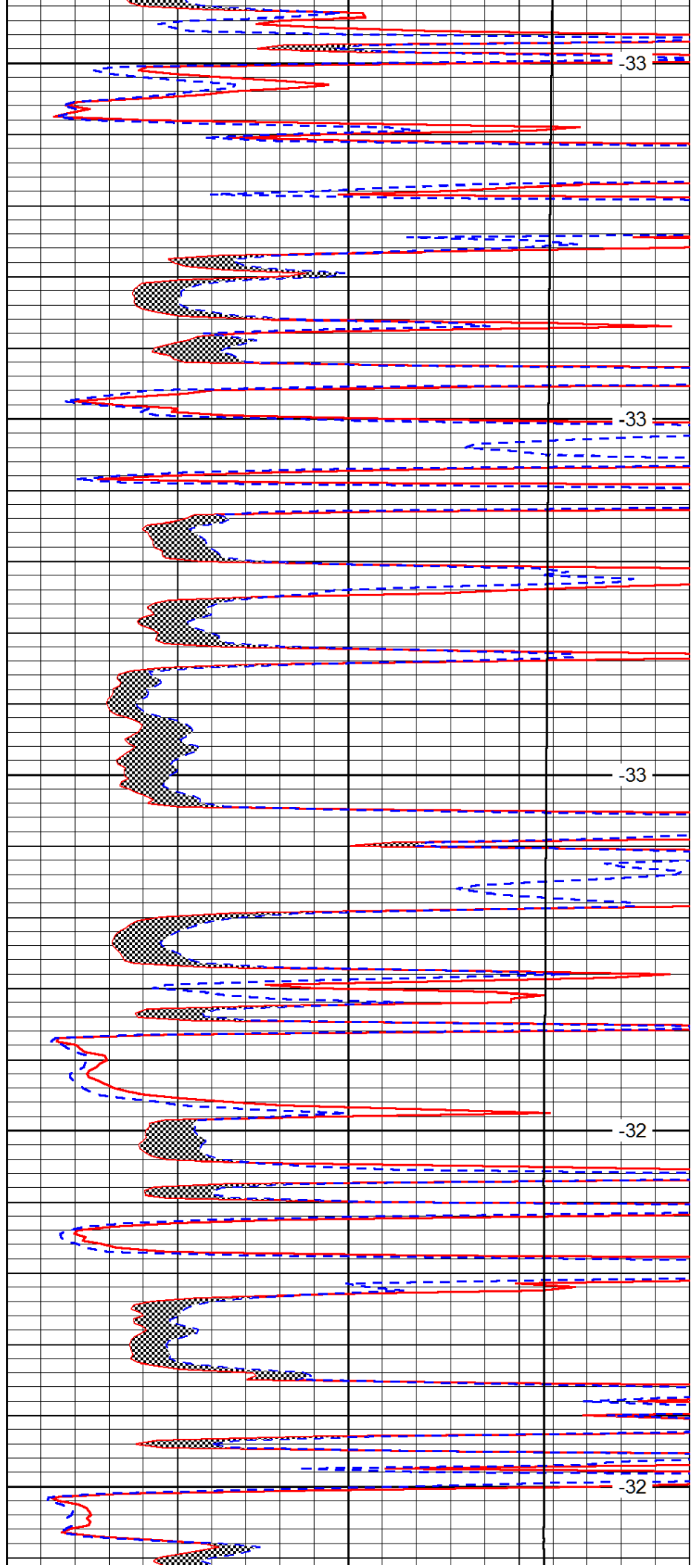
3800

3850

3900

3950

4000



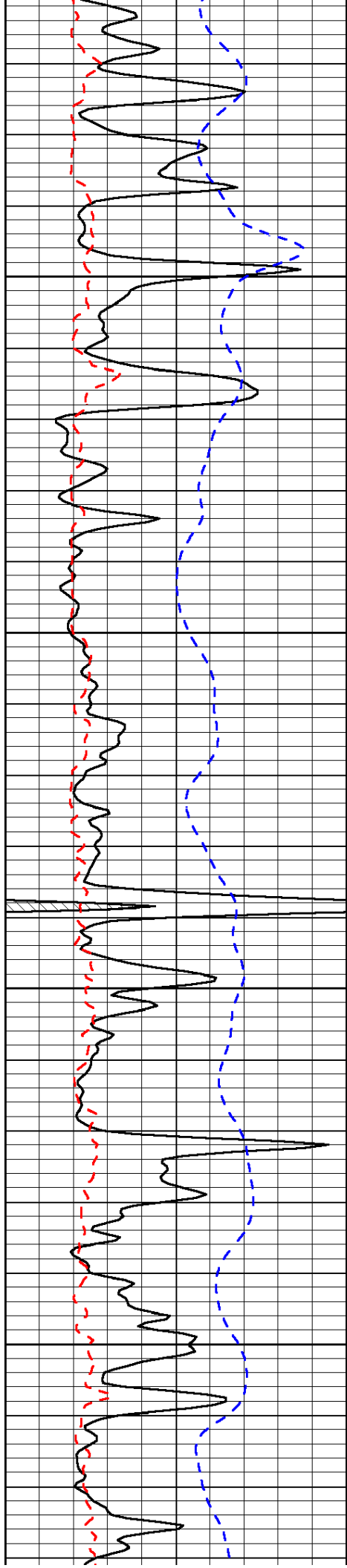
-33

-33

-33

-32

-32

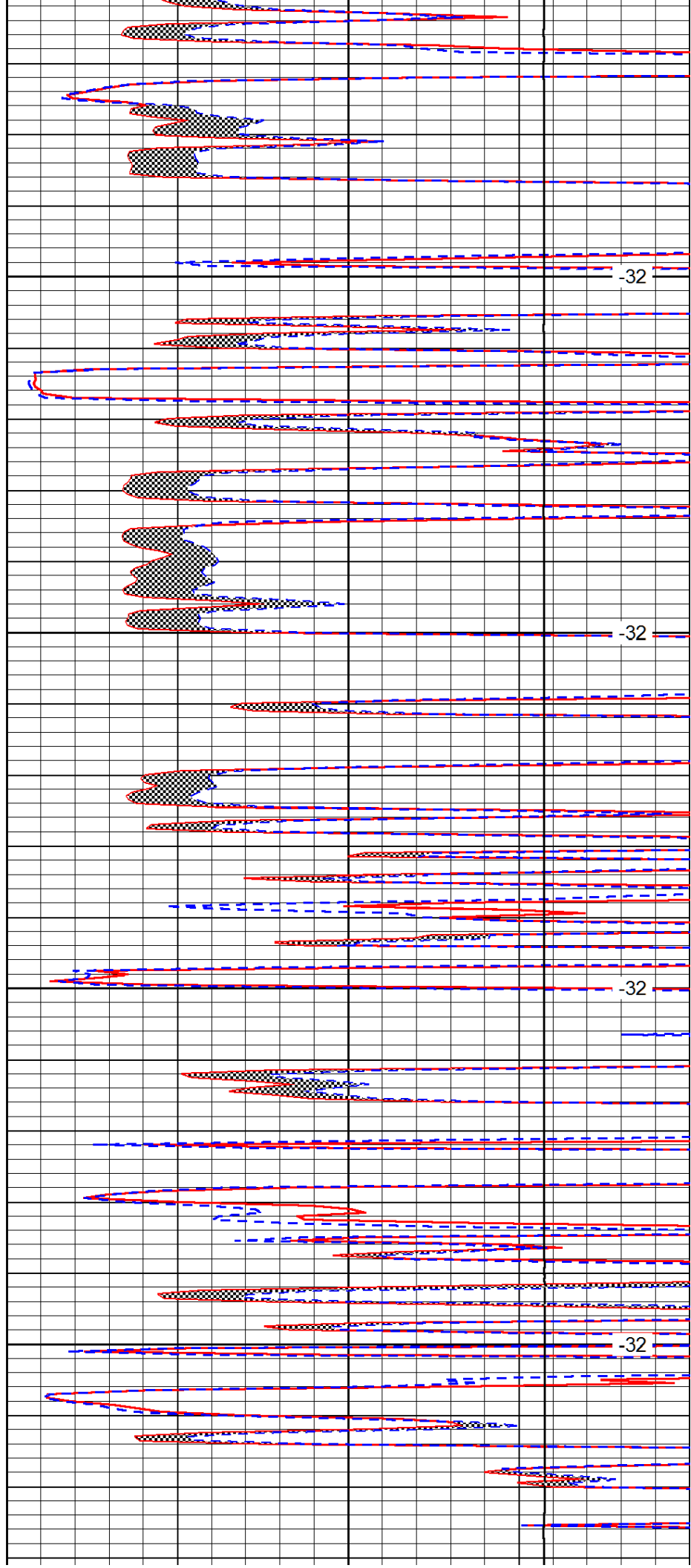


4050

4100

4150

4200

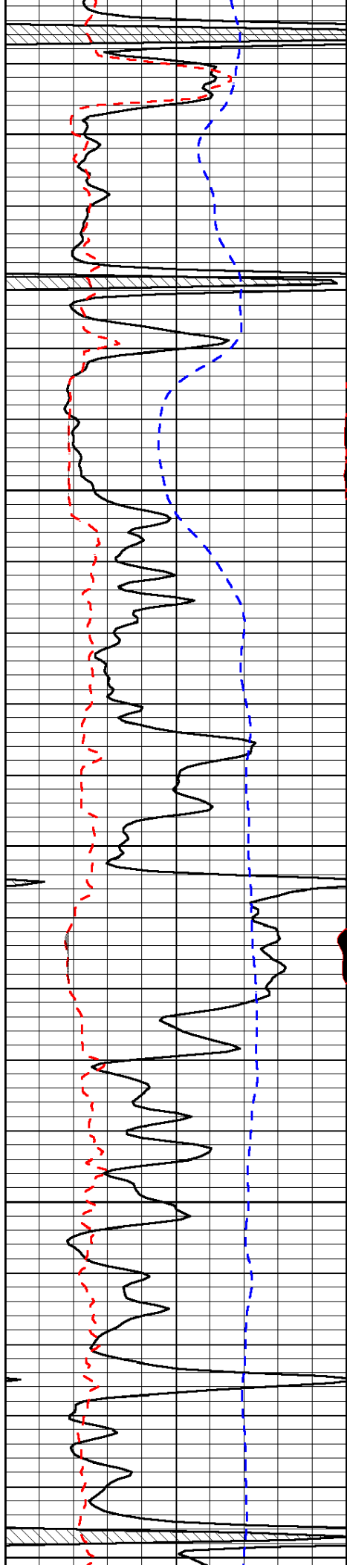


-32

-32

-32

-32



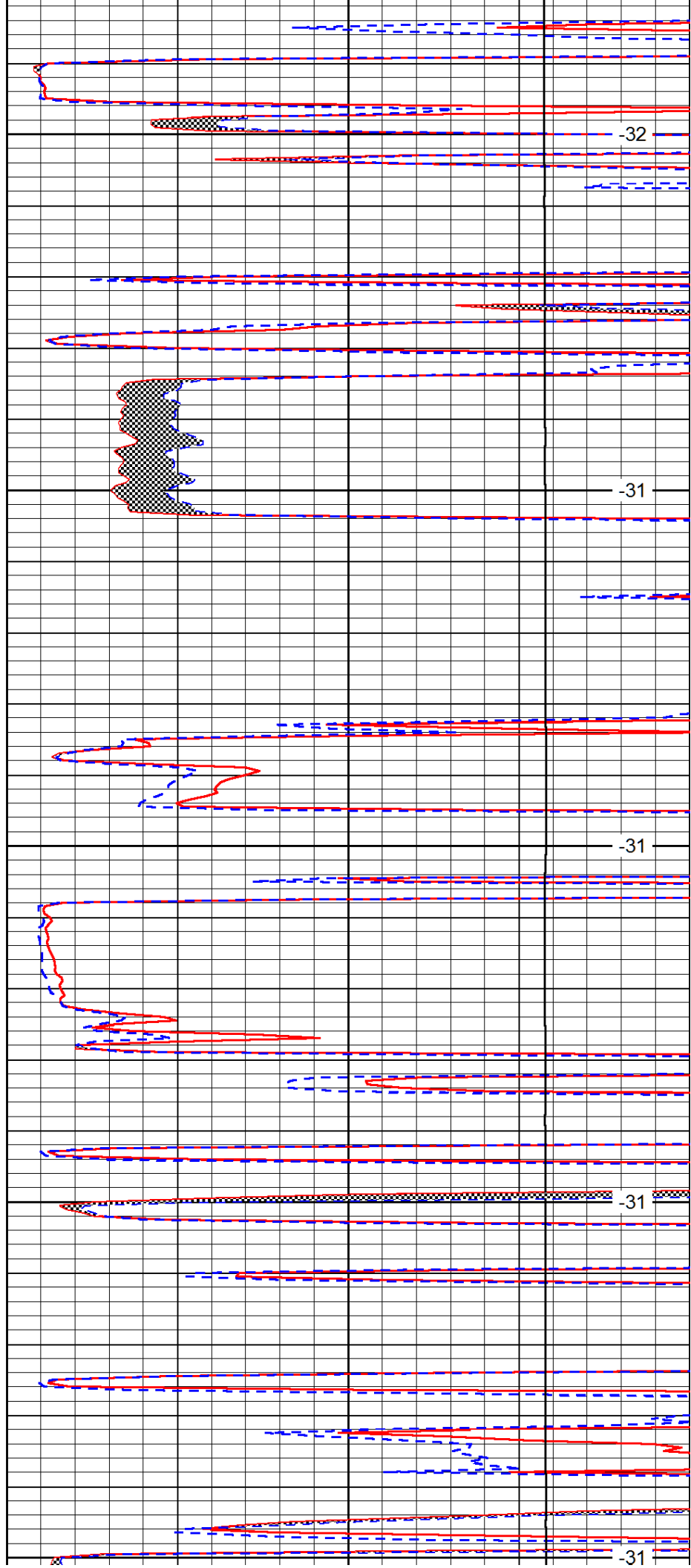
4250

4300

4350

4400

4450



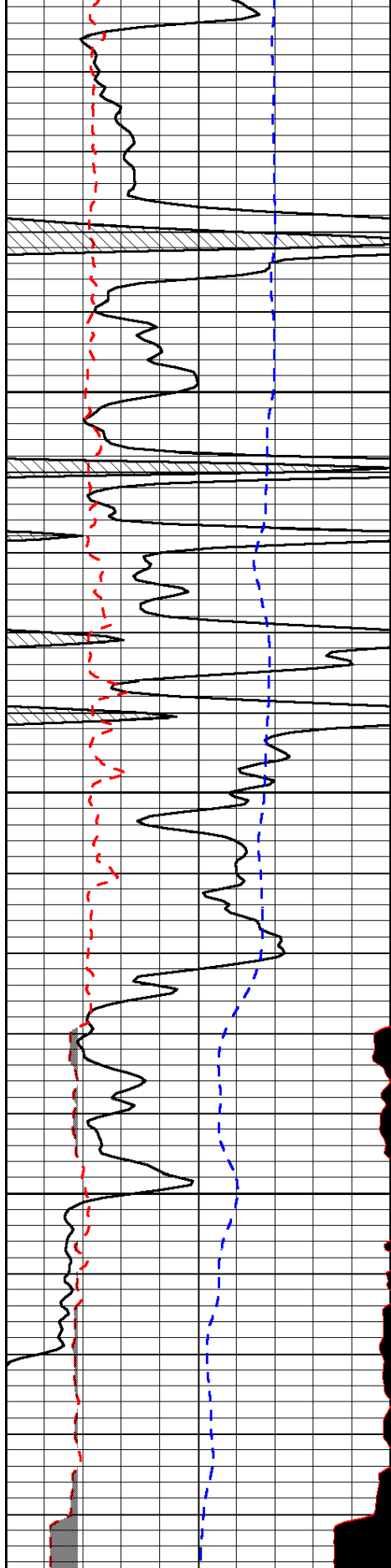
-32

-31

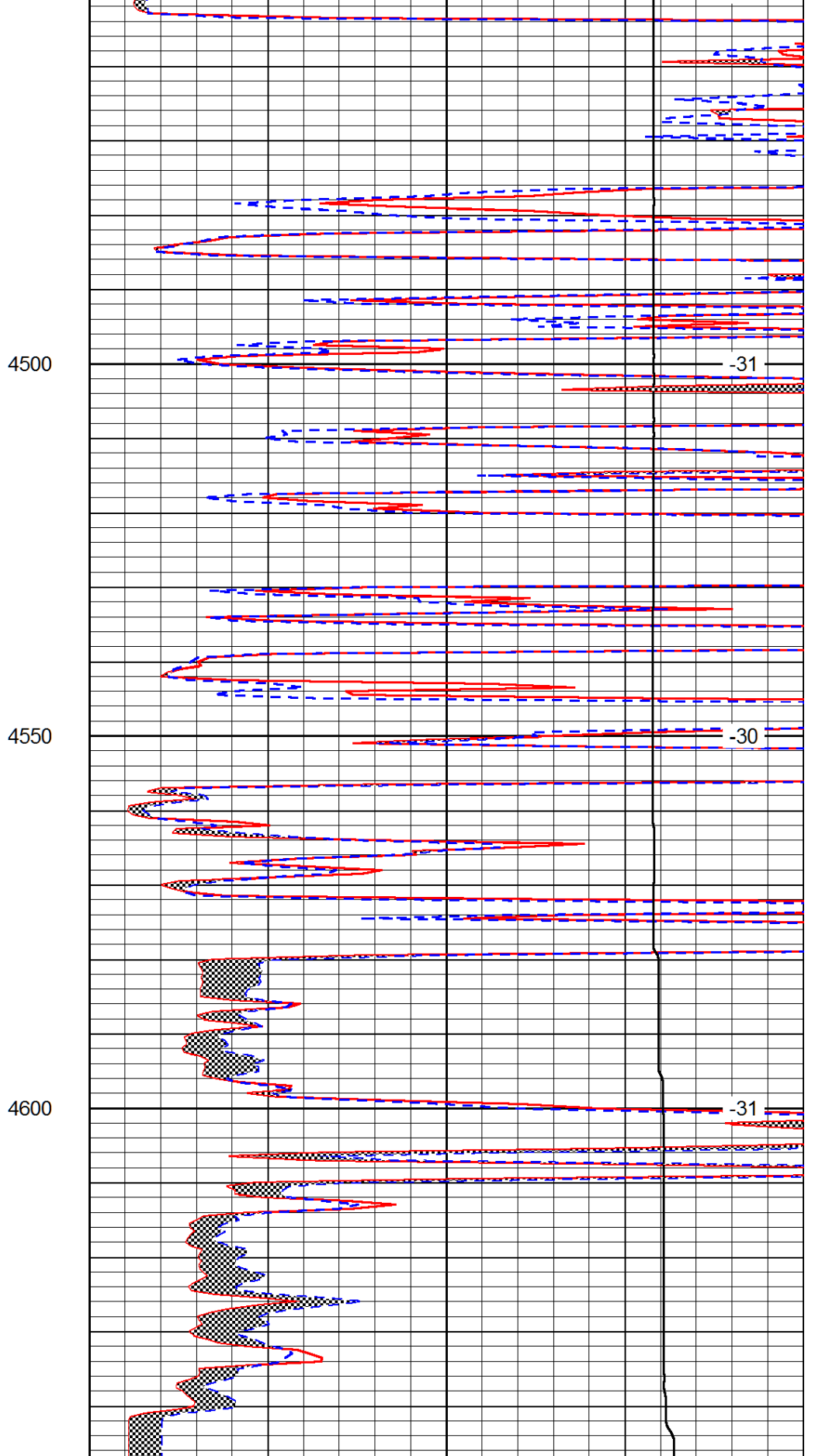
-31

-31

-31



0	Gamma Ray	150
6	MCAL (GAPI)	16
2.875	Mud Cake (GAPI)	7.875
-200	SP (mV)	0



0	Micro Inverse 1 X 1	40
0	Micro Normal 2"	40
10000	Line Weight	0

LSPD

