



WIRELINE  
SERVICES, INC.  
CHANUTE, KANSAS

GAMMA RAY  
NEUTRON  
COMPLETION LOG

Company TOWN OIL COMPANY, INC.  
Well SNOUFFER #1-4  
Field PAOLA-RANTOUL  
County MIAMI  
State KANSAS

Company TOWN OIL COMPANY, INC.  
Well SNOUFFER #1-4  
Field PAOLA-RANTOUL  
County MIAMI State KANSAS

Location: API # : 15-121-31315-00-00  
SE-NW-SW  
1650' FSL & 4290' FEL  
SEC 29 TWP 16S RGE 24E  
Permanent Datum G.L. Elevation 925'EST.  
Log Measured From G.L.  
Drilling Measured From G.L.

|                        |               |   |   |
|------------------------|---------------|---|---|
| Date                   | 1-3-2017      |   |   |
| Run Number             | 1-NEWWELL     |   |   |
| Depth Driller          |               |   |   |
| Depth Logger           | 419.3'        |   |   |
| Top Log Interval       | SURFACE       |   |   |
| Bottom Logged Interval | 419.3'        |   |   |
| Fluid Level            | FULL          |   |   |
| Type Fluid             | WATER         |   |   |
| Production Casing      | 2 7/8" @ T.D. | @ | @ |
| Max. Recorded Temp.    |               |   |   |
| Estimated Cement Top   |               |   |   |
| Calculated Cement Top  |               |   |   |
| Amount & Type Cement   |               |   |   |
| Amount & Type Admix    |               |   |   |
| Drilling Contractor    | COMPANY TOOLS |   |   |
| Equipment Number       | 107           |   |   |
| Location               |               |   |   |
| Recorded By            | UDEN, D.      |   |   |
| Witnessed By           | TOWN, LESTER  |   |   |

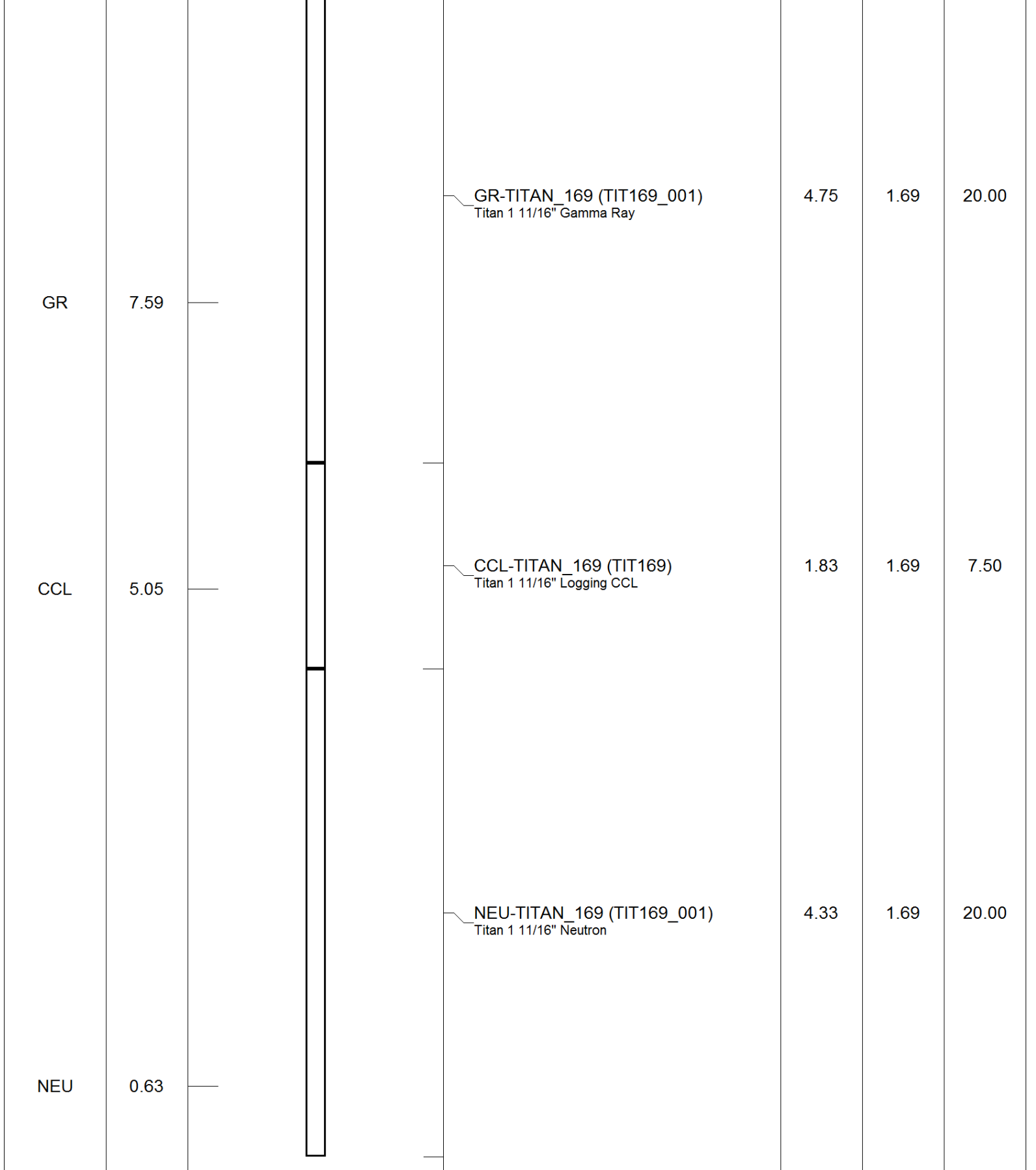
<<< Fold Here >>>

All interpretations are opinions based on inferences from electrical or other measurements and we cannot and do not guarantee the accuracy or correctness of any interpretation, and we shall not, except in the case of gross or willful negligence on our part, be liable or responsible for any loss, costs, damages, or expenses incurred or sustained by anyone resulting from any interpretation made by any of our officers, agents or employees. These interpretations are also subject to our general terms and conditions set out in our current Price Schedule.

Comments

THANK YOU

| Sensor | Offset (ft) | Schematic | Description | Len (ft) | OD (in) | Wt (lb) |
|--------|-------------|-----------|-------------|----------|---------|---------|
|        |             |           |             |          |         |         |

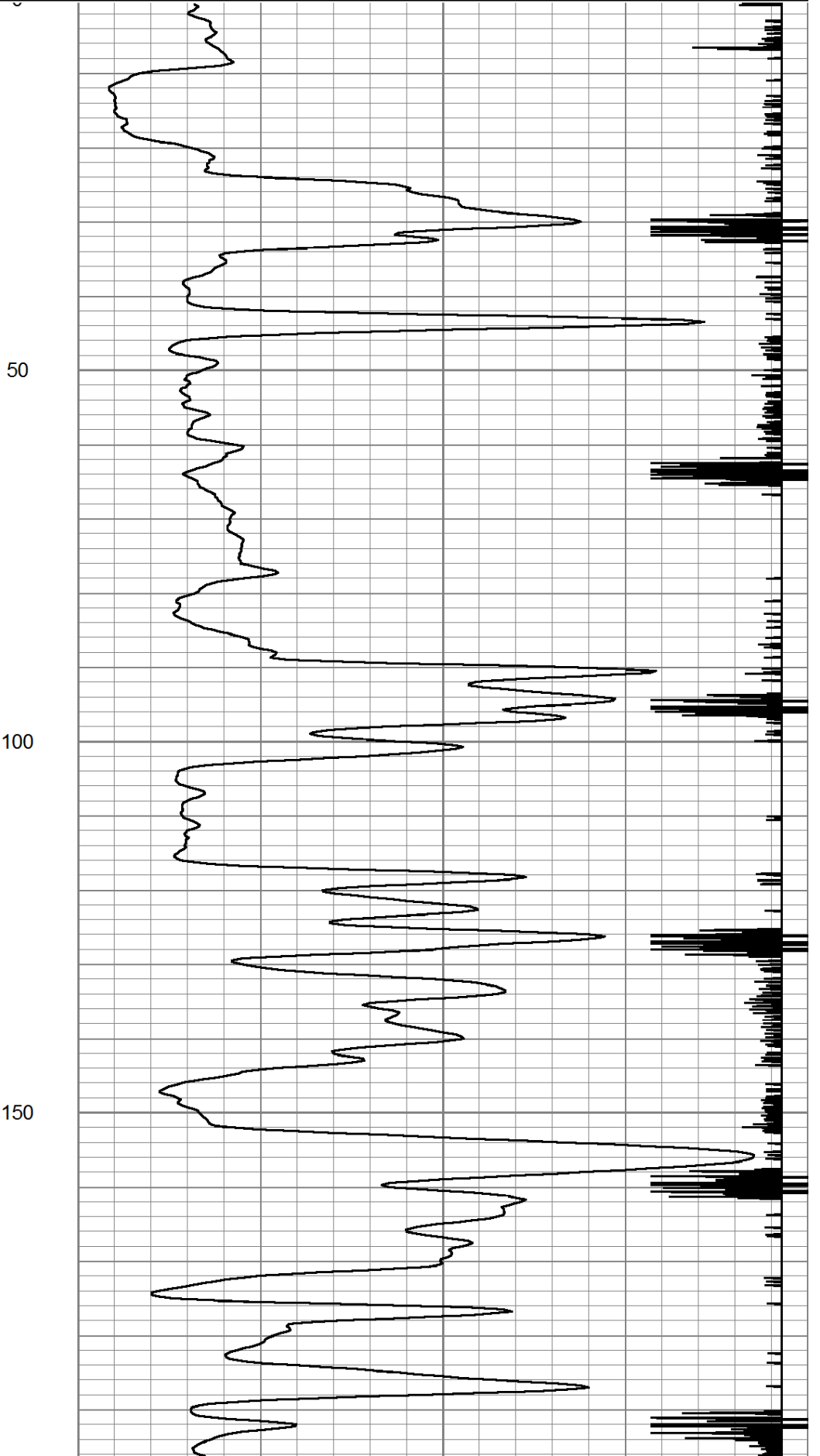
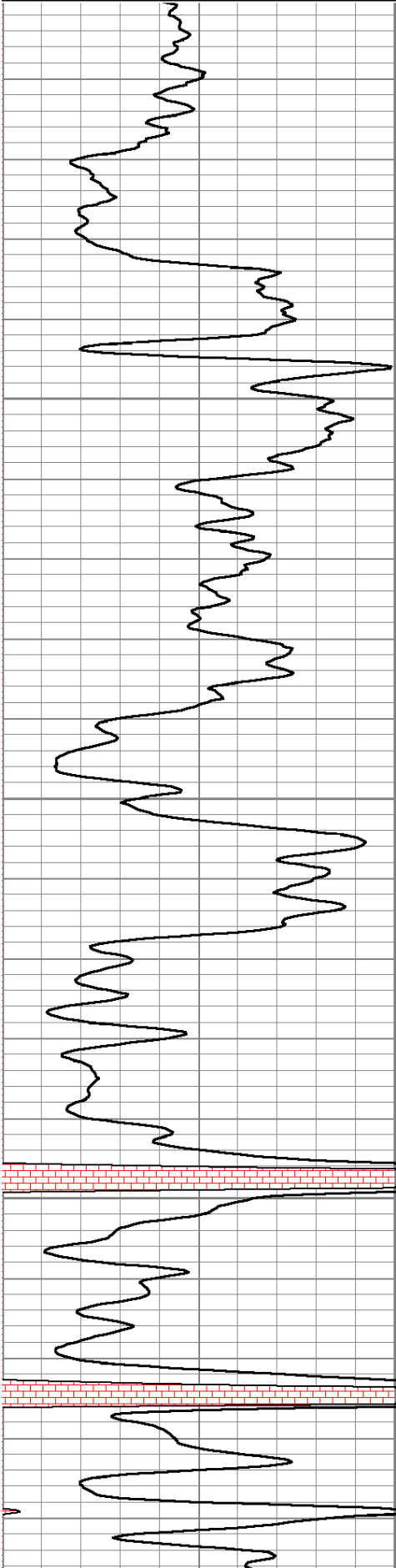


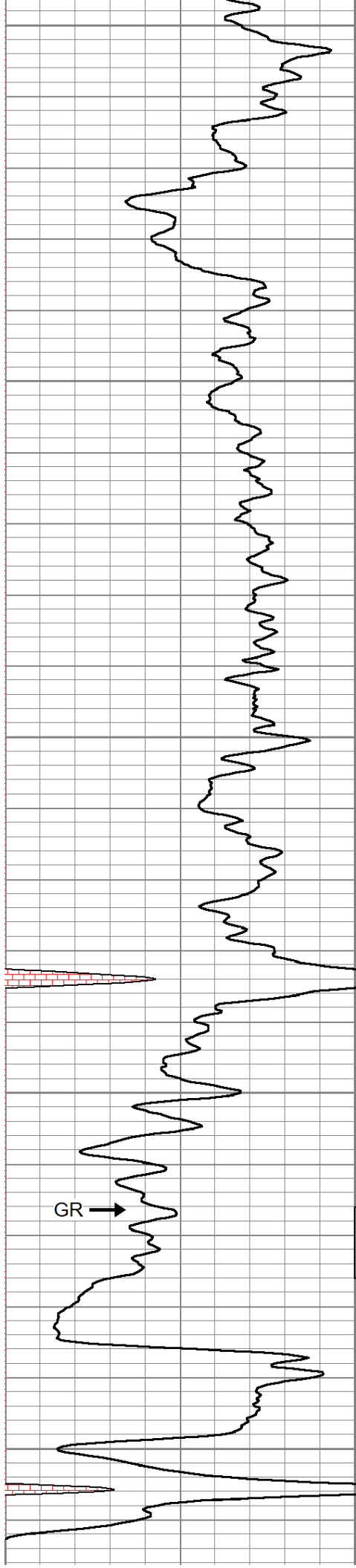
Dataset: snouffer #I-4.db: field/well/run1/pass2  
 Total Length: 10.92 ft  
 Total Weight: 47.50 lb  
 O.D.: 1.69 in

Database File: e:\snouffer #i-4.db  
 Dataset Pathname: pass2  
 Presentation Format: gr-n-ccl

|     |    |     |
|-----|----|-----|
| 0   | GR | 150 |
| 150 | gr | 300 |

|     |     |      |
|-----|-----|------|
| 100 | NEU | 1500 |
| 13  | CCL | -1   |





200

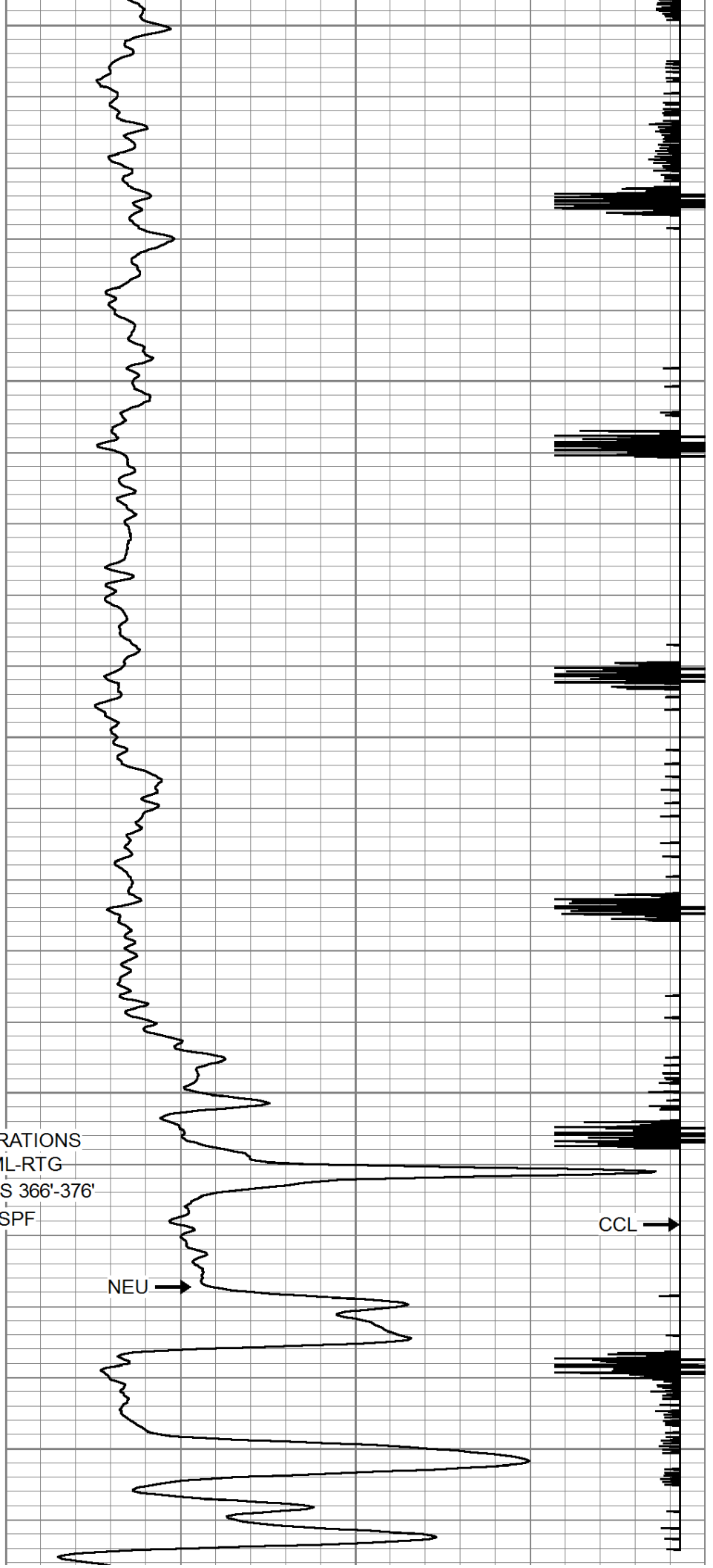
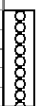
250

300

350

400

PERFORATIONS  
2" DML-RTG  
26 SHOTS 366'-376'  
3 SPF



NEU →

CCL →

|     |    |     |     |     |        |
|-----|----|-----|-----|-----|--------|
| 0   | GR | 150 | 100 | NEU | 1500   |
| 150 | gr | 300 |     | 13  | CCL -1 |



Company TOWN OIL COMPANY, INC.  
 Well SNOUFFER #I-4  
 Field PAOLA-RANTOUL  
 County MIAMI SEC. 29 TWP. 16S RGE. 24E  
 State KANSAS Date 1-3-2017