



**MIDWEST SURVEYS**  
 LOGGING - PERFORATING - CONSULTING SERVICES  
 P.O. Box 68, Osawatomie, KS 68064  
 913.735.2128

File No.

Company **HB Energy, LLC.**

Well **Fasolino No. HB-5**

Field **Prairie Center**

County **Johnson** State **Kansas**

Location **775' FSL & 3760' FEL**

Other Services **Perforate**

Sec. 4 **Typ. 14s Rge. 22e**

Permanent Datum **GL** Elevation **997'**

Log Measured From **GL**

Drilling Measured From **GL**

Date **01-06-2017**

Run Number **One**

Depth Driller **920.0**

Bottom Logged Interval **868.0**

Top Log Interval **20.0**

Fluid Level **Full**

Type Fluid **Water**

Density / Viscosity **NA**

Salinity - PPM Cl **NA**

Max Recorded Temp **NA**

Estimated Cement Top **0.0**

Equipment No. **104** Location **Osawatomie**

Recorded By **Gen Windisch**

Witnessed By **Isaac Burbank**

BORE-HOLE RECORD

Run No.

BIT FROM TO

SIZE

WGT. FROM TO

CSASING RECORD

TO

One 9.875" 0.0 21.25 15.0# 0.0 21.25

Two 5.825" 21.25 920.0 2.875" 6.5# 0.0 903.35

Bottom 872.65

Bottom 872.65

Bottom 872.65

Bottom 872.65

Bottom 872.65

Bottom 872.65

Bottom 872.65

Bottom 872.65

Bottom 872.65

Bottom 872.65

Bottom 872.65

Bottom 872.65

Bottom 872.65

Bottom 872.65

Bottom 872.65

Bottom 872.65

Bottom 872.65

Bottom 872.65

Bottom 872.65

Bottom 872.65

Bottom 872.65

Bottom 872.65

Bottom 872.65

Bottom 872.65

Bottom 872.65

Bottom 872.65

Bottom 872.65

Bottom 872.65

Bottom 872.65

Bottom 872.65

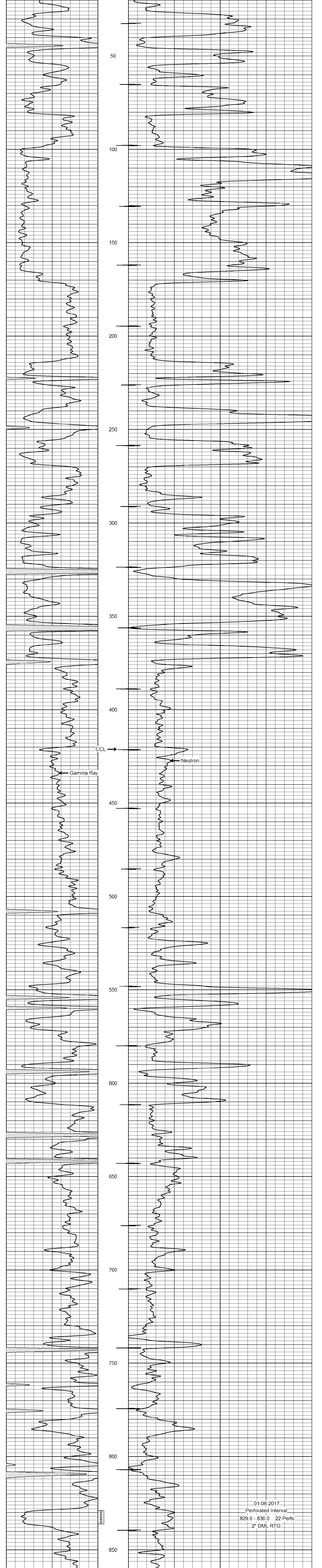
<<< Fold Here >>>

All interpretations are opinions based on inferences from electrical or other measurements and we cannot and do not guarantee the accuracy or correctness of any interpretation, and we shall not, except in the case of gross or willful negligence on our part, be liable or responsible for any loss, costs, damages, or expenses incurred or sustained by anyone resulting from any interpretation made by any of our officers, agents or employees. These interpretations are also subject to our general terms and conditions set out in our current Price Schedule.

Comments

Drilling Contractor :  
Hughes Drilling, Company

Database File: fasolino 5hb.db  
 Dataset Pathname: pass1  
 Presentation Format: gr-n-ccl  
 Dataset Creation: Fri Jan 06 10:22:23 2017 by Log SCH 111116  
 Charted by: Depth in Feet scaled 1:240



01-06-2017  
 Perforated Interval  
 829.0 - 836.0 22 Perfs  
 2" DML RTG