



**COMPLETION  
& PRODUCTION  
SERVICES CO.**

**MICRO  
LOG**

Company MAI OIL OPERATIONS, INC.  
Well HAMMEKE B #4  
Field SYMS SOUTHEAST  
County STAFFORD  
State KANSAS

Company MAI OIL OPERATIONS, INC.  
Well HAMMEKE B #4  
Field SYMS SOUTHEAST  
County STAFFORD State KANSAS

Location: API # : 15-185-23919-00-00  
640' FSL & 1360' FEL  
NE - SE - SW - SE  
SEC 21 TWP 21S RGE 12W  
Permanent Datum GROUND LEVEL Elevation 1844  
Log Measured From KELLY BUSHING 8' A.G.L.  
Drilling Measured From KELLY BUSHING  
Other Services CNL/CDL DIL  
Elevation K.B. 1852 D.F. 1850 G.L. 1844

Date	1/11/15
Run Number	TWO
Depth Driller	3700
Depth Logger	3700
Bottom Logged Interval	3698
Top Log Interval	2900
Casing Driller	8 5/8" @ 843
Casing Logger	640
Bit Size	7 7/8"
Type Fluid in Hole	CHEMICAL MUD
Density / Viscosity	9.662
pH / Fluid Loss	9.0/9.6
Source of Sample	FLOWLINE
Rm @ Meas. Temp	.70 @ 50F
Rmt @ Meas. Temp	.52 @ 50F
Rmc @ Meas. Temp	.84 @ 50F
Source of Rmf / Rmc	MEASUREMENT
Rm @ BHT	.29 @ 113F
Time Circulation Stopped	2 HOURS
Time Logger on Bottom	
Maximum Recorded Temperature	113F
Equipment Number	4010
Location	HAYS, KANSAS
Recorded By	IAN MABB
Witnessed By	KURT TALBOTT

<<< Fold Here >>>

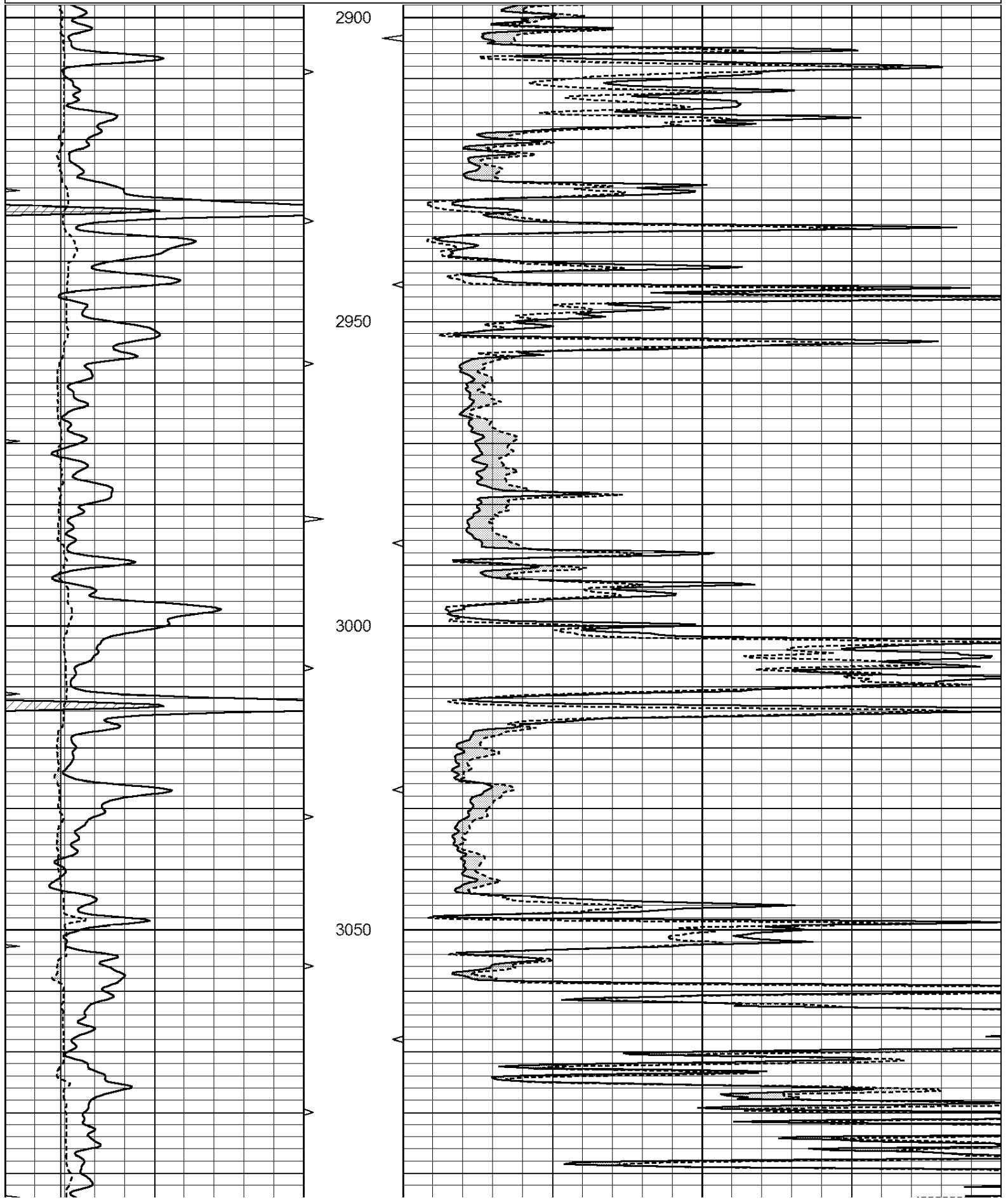
All interpretations are opinions based on inferences from electrical or other measurements and we cannot and do not guarantee the accuracy or correctness of any interpretation, and we shall not, except in the case of gross or willful negligence on our part, be liable or responsible for any loss, costs, damages, or expenses incurred or sustained by anyone resulting from any interpretation made by any of our officers, agents or employees. These interpretations are also subject to our general terms and conditions set out in our current Price Schedule.

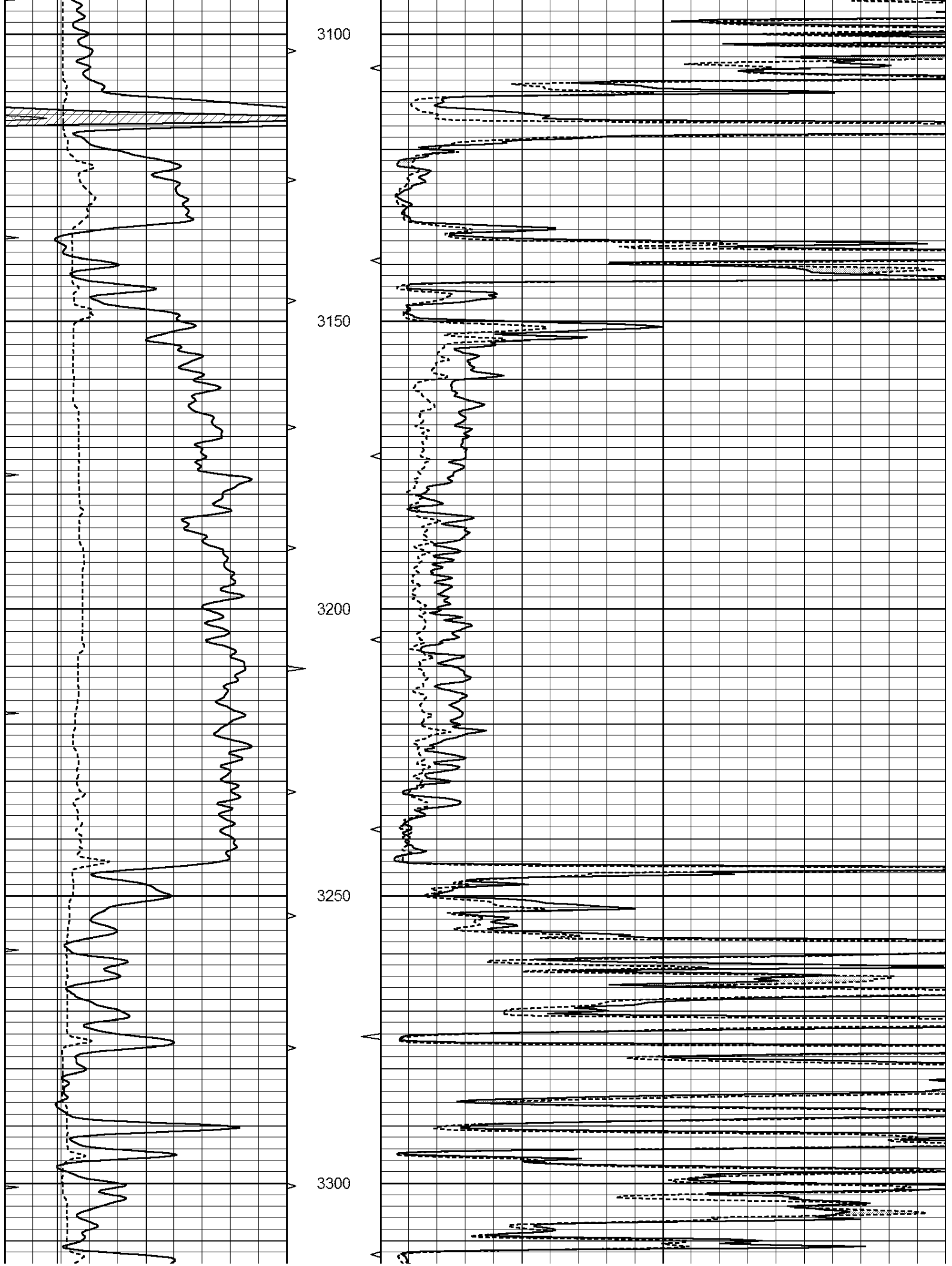
**Comments**

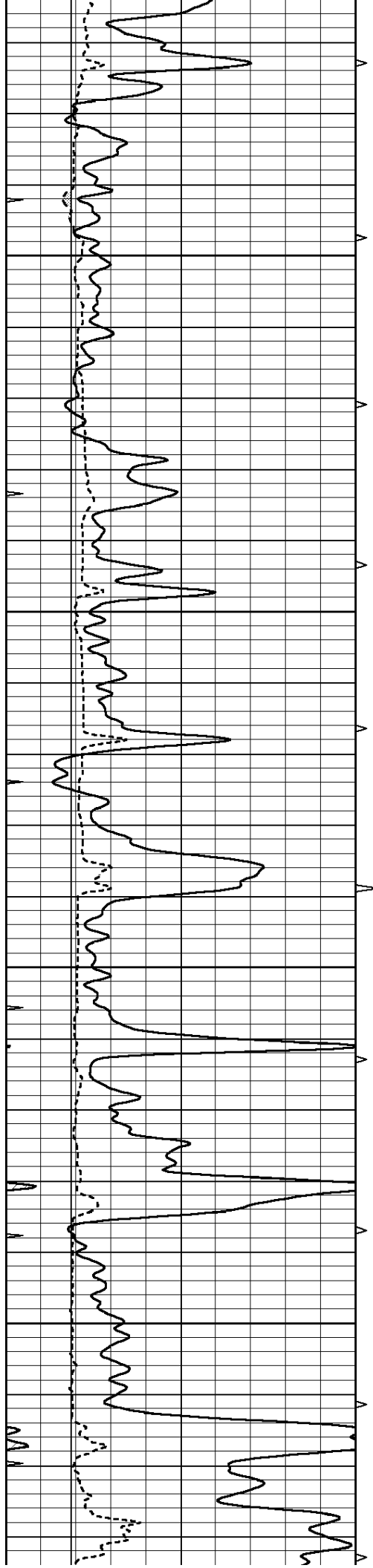
THANK YOU FOR USING NABORS, HAYS, KS. (785) 628-6395  
DIRECTIONS:  
GREAT BEND, KS. - 10TH ST. & HWY 281 - 11 MILES SOUTH TO NE 170TH RD - 6 MILES EAST TO NE 60TH RD - NORTH 1/4 MILES - WEST INTO

Database File: 26525ddn.db  
Dataset Pathname: pass6.2  
Presentation Format: \_micro  
Dataset Creation: Sun Jan 11 05:26:41 2015  
Charted by: Depth in Feet scaled 1:240

0	GAMMA RAY (GAPI)	150	ABHV	0	MEL1.5 (Ohm-m)	40
6	CALIPER (in)	16	10 (ft3)	0 0	MEL2.0 (Ohm-m)	40
0	MINMK	20	TBHV			
			0 (ft3)	10		





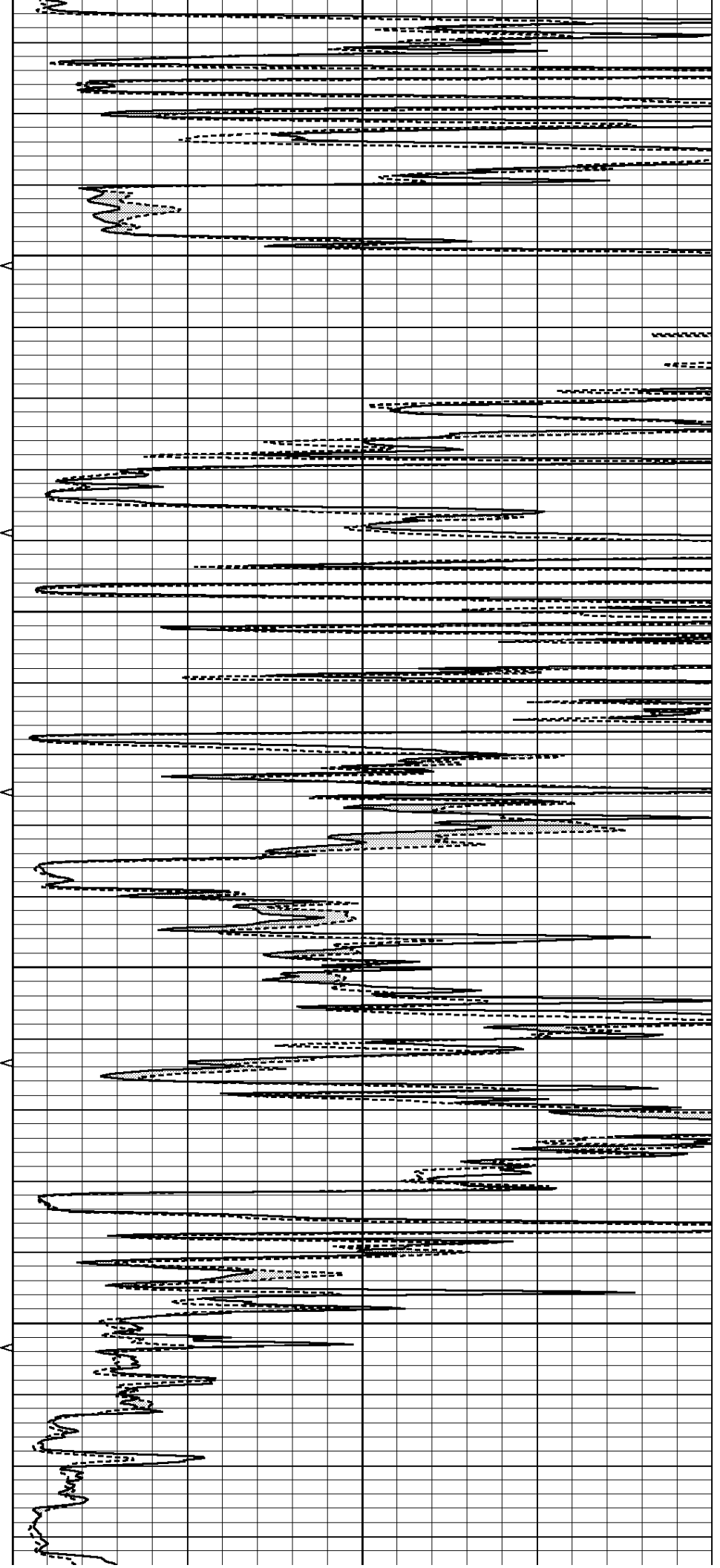


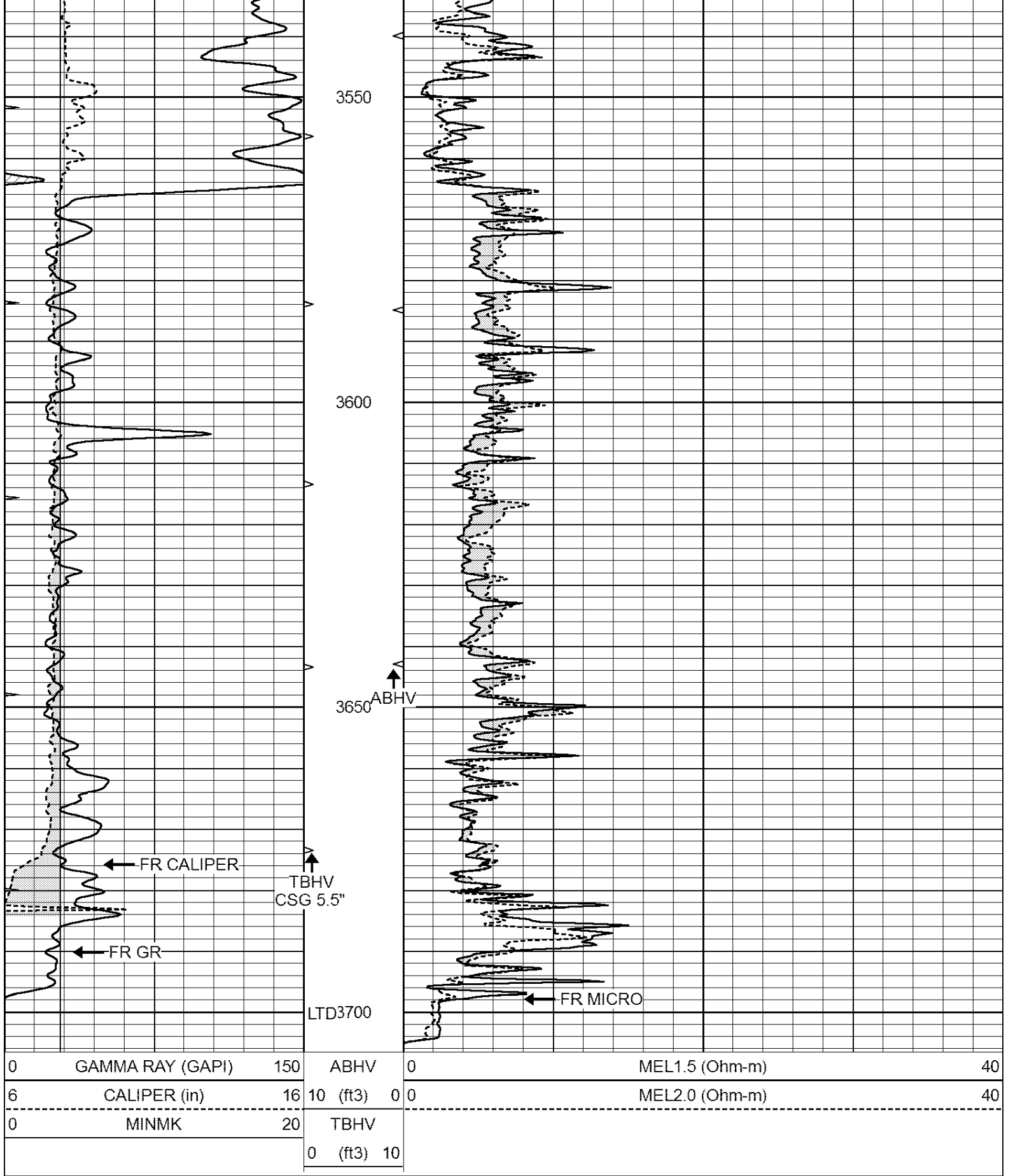
3350

3400

3450

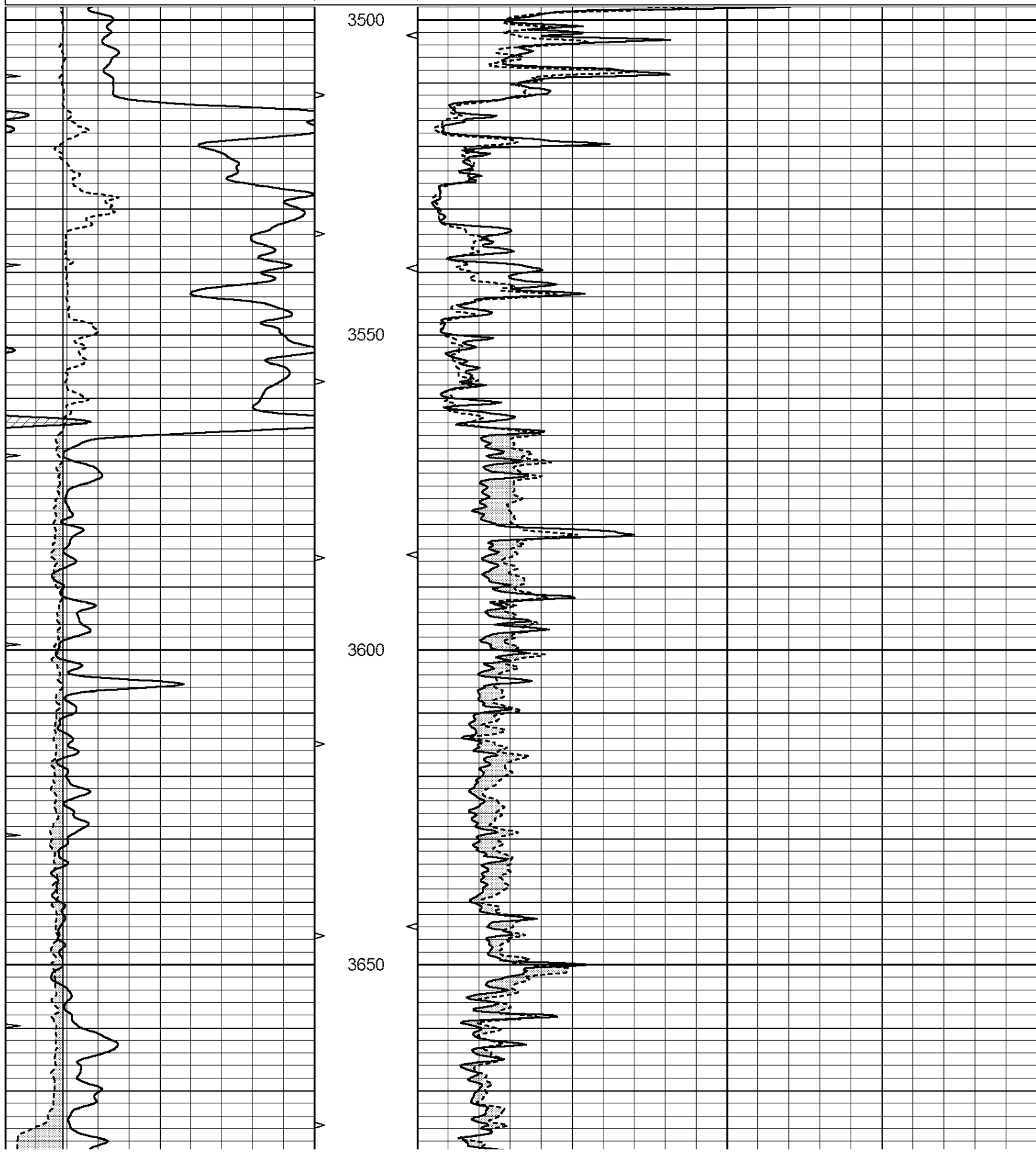
3500

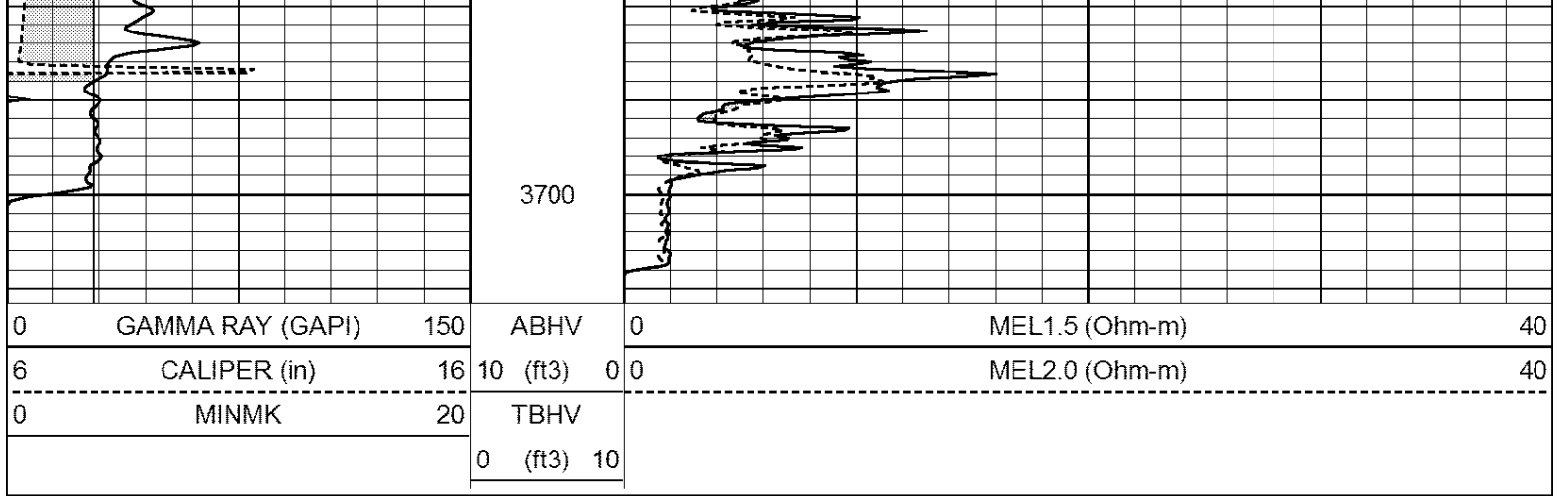




Database File: 26525ddn.db  
 Dataset Pathname: pass5.2  
 Presentation Format: \_micro  
 Dataset Creation: Sun Jan 11 05:04:13 2015  
 Charted by: Depth in Feet scaled 1:240

0	GAMMA RAY (GAPI)	150	ABHV	0	MEL1.5 (Ohm-m)	40
6	CALIPER (in)	16	10 (ft3)	0	MEL2.0 (Ohm-m)	40
0	MINMK	20	TBHV			
			0 (ft3)	10		





### Calibration Report

Database File: 26525ddn.db  
 Dataset Pathname: pass6.2  
 Dataset Creation: Sun Jan 11 05:26:41 2015

### MICRO Calibration Report

Serial Number:	MICRO3	
Tool Model:	PROBE	
Performed:	Thu Nov 17 03:06:31 2011	
Caliper Calibration:	Gain=3.916	Offset=-9.071
References	Low Cal	High Cal
Readings	8.000	14.000
	4.257	5.789
1.5" Calibration:	Gain=100.000	Offset=0.000
References	Low Cal	High Cal
Readings	0.000	20.000
	0.004	0.228
2" Calibration:	Gain=150.553	Offset=-1.220
References	Low Cal	High Cal
Readings	0.000	20.000
	0.005	0.175

### Gamma Ray Calibration Report

Serial Number:	GR6	
Tool Model:	OPEN	
Performed:	Wed Dec 10 11:09:24 2014	
Calibrator Value:	150.0	GAPI
Background Reading:	0.0	cps
Calibrator Reading:	276.0	cps
Sensitivity:	0.8000	GAPI/cps