



Green Country Wireline

GAMMA RAY
CEMENT BOND LOG
CCL/VDL

Company JONES & BUCK DEVELOPMENT
Well L&D DONLEY # 20 SWD
Field WILDCAT
County COWLEY
State KANSAS
Country USA

Company JONES & BUCK DEVELOPMENT
Well L&D DONLEY # 20 SWD
Field WILDCAT
County COWLEY
State KANSAS
Country USA

Location: API #: 15-035-24622-00-00

Permanent Datum Elevation
Log Measured From
Drilling Measured From
SEC 20 TWP 30S RGE 5E
NW NE NE NW
4990' FSL & 3010' FEL
Other Services
K.B.
D.F.
G.L. 1312'

Date	2-23-15
Run Number	1
Depth Driller	2060'
Depth Logger	2060'
Bottom Logged Interval	2059' SURFACE
Top Log Interval	
Open Hole Size	WATER
Type Fluid	
Density / Viscosity	
Max. Recorded Temp.	
Estimated Cement Top	58'
Time Well Ready	
Time Logger on Bottom	
Equipment Number	3
Location	DEWEY HENRIEN MR JONES
Recorded By	
Witnessed By	
Run Number	
Bit	
From	
To	
Size	
Weight	
From	
To	
Casing Record	
Surface String	Size 8.625" Wgt/lft
Prot. String	
Production String	Size 4.5" SURFACE
Liner	
	Bottom 200'
	TD

<<< Fold Here >>>

All interpretations are opinions based on inferences from electrical or other measurements and we cannot and do not guarantee the accuracy or correctness of any interpretation, and we shall not, except in the case of gross or willful negligence on our part, be liable or responsible for any loss, costs, damages, or expenses incurred or sustained by anyone resulting from any interpretation made by any of our officers, agents or employees. These interpretations are also subject to our general terms and conditions set out in our current Price Schedule.

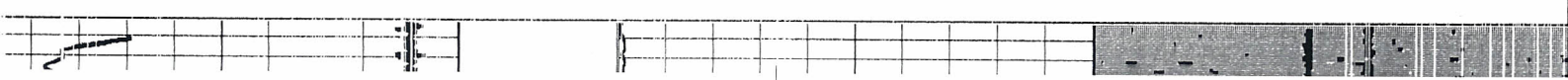
Comments



GR CBL CCL VDL

Database File: donleyswd.db
Dataset Pathname: donleyswd/run1/pass1
Presentation Format: standard
Dataset Creation: Mon Feb 23 09:12:43 2015 by Log Std Casedhole 09061
Charted by: Depth in Feet scaled 1:240

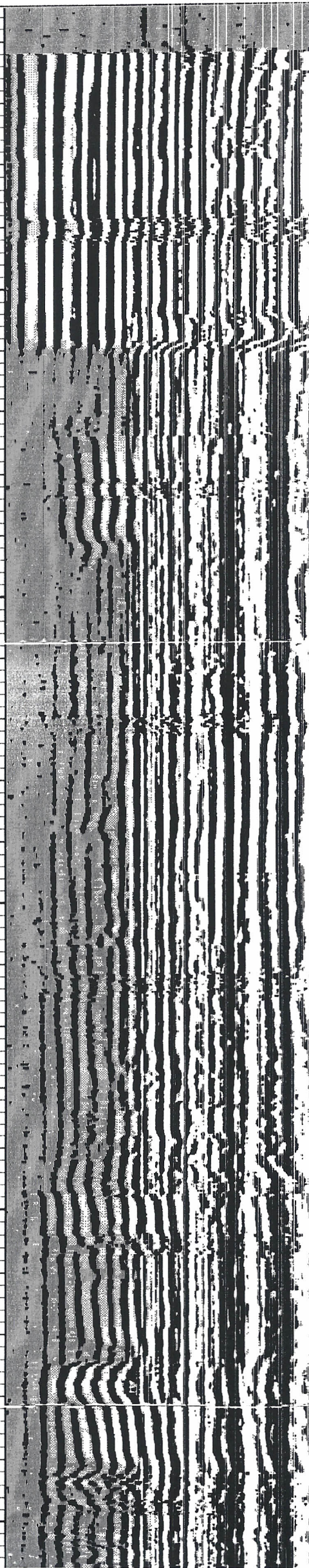
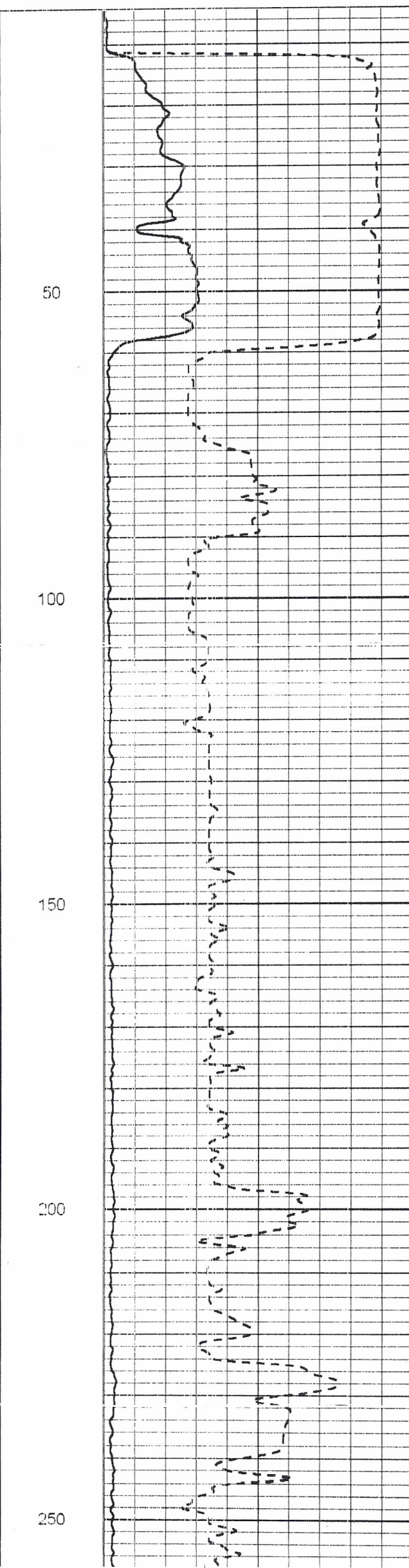
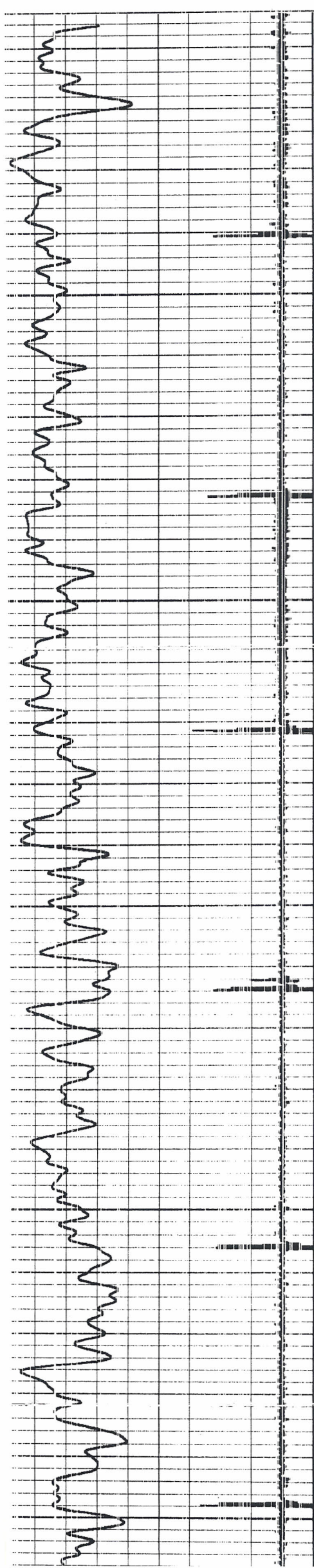
Collar Locator	-1	800	TT3FT (usec)	200	200	WVF3FT	1200
Gamma Ray (GAPI)	70	-3	AMP3FT (mV)	300			

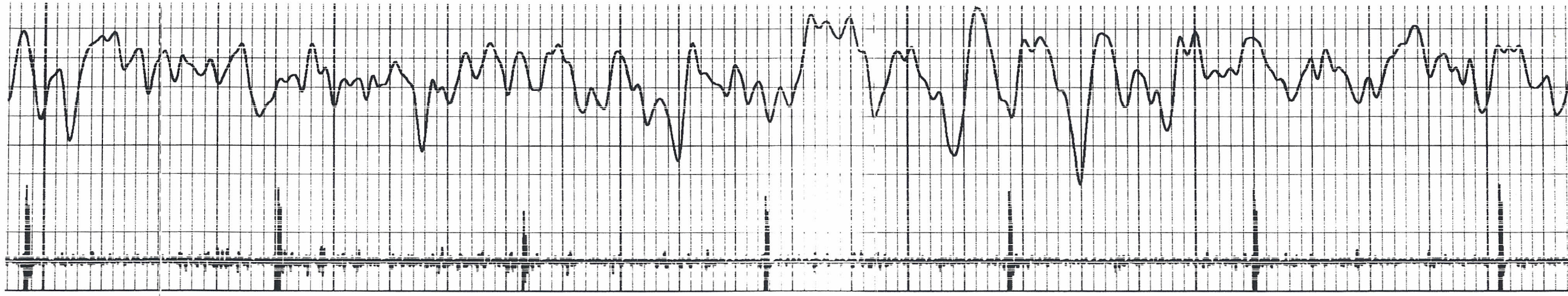


9	Collar Locator	-1
0	Gamma Ray (GAPI)	70

800	TT3FT (usec)	200
-3	AMP3FT (mV)	300

200 WVF3FT 1200





500

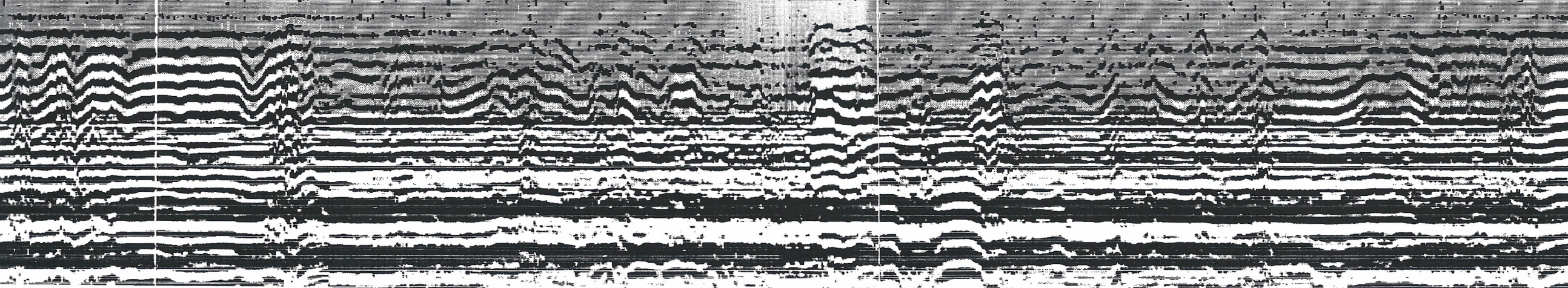
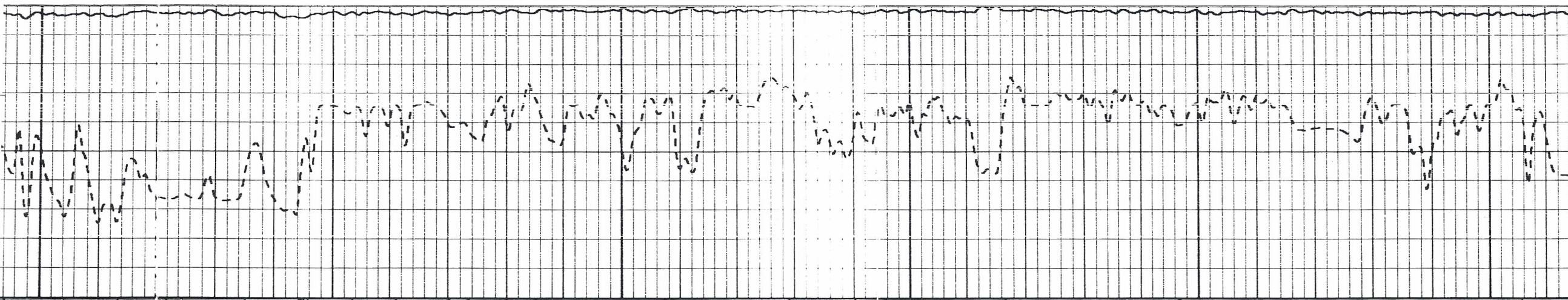
450

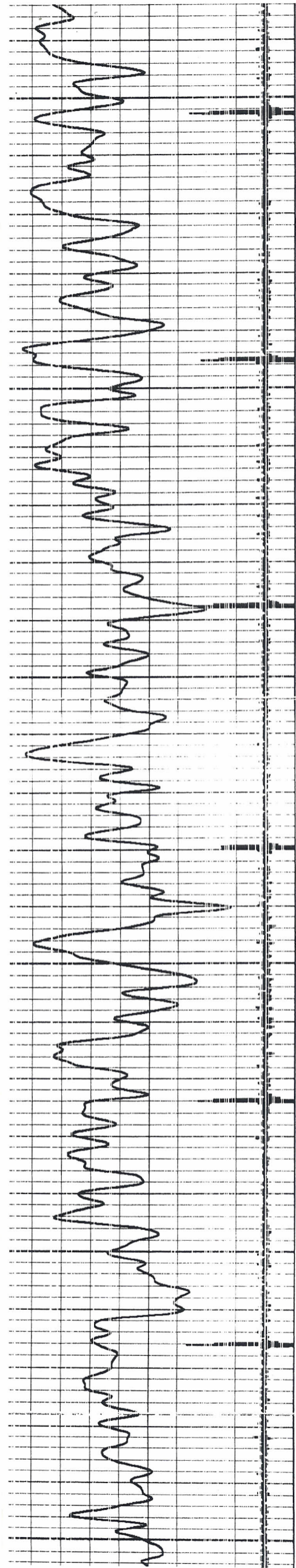
400

350

300

250





500

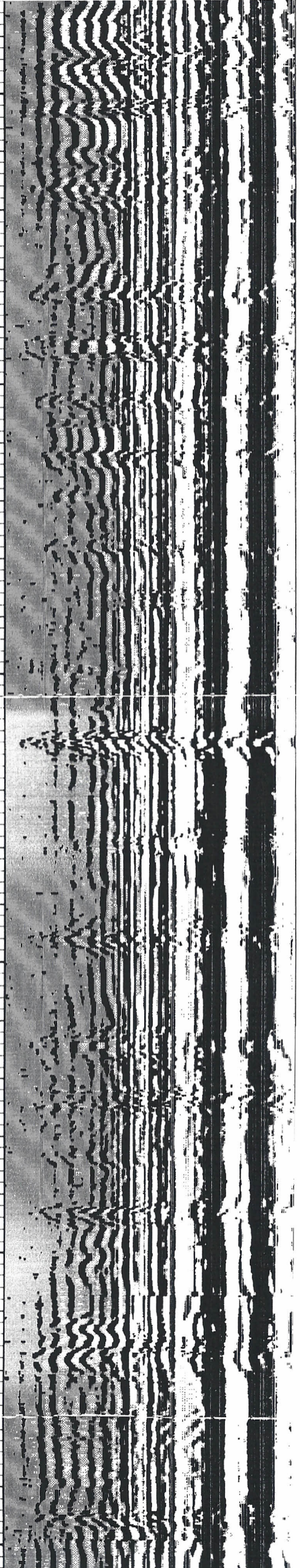
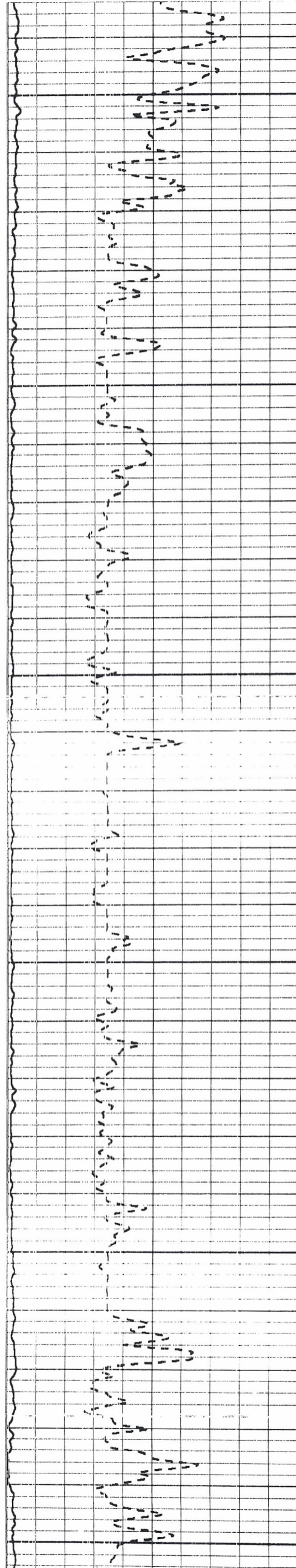
550

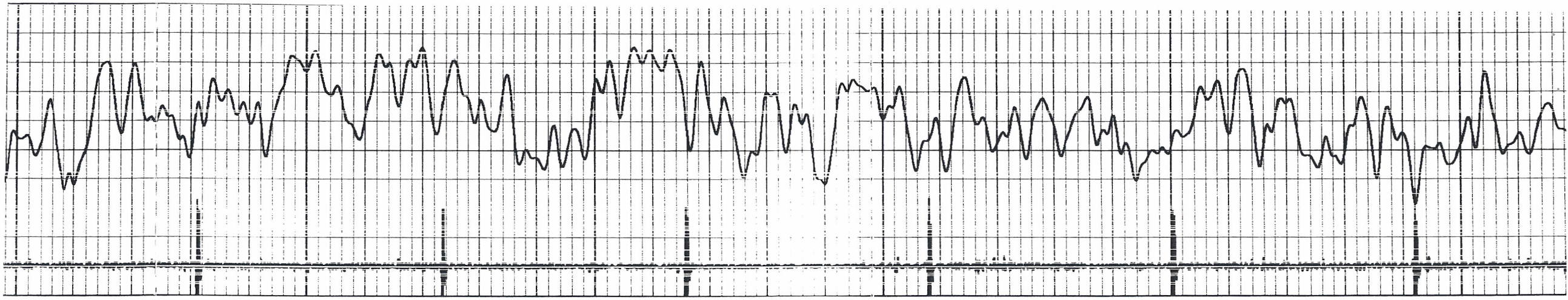
600

650

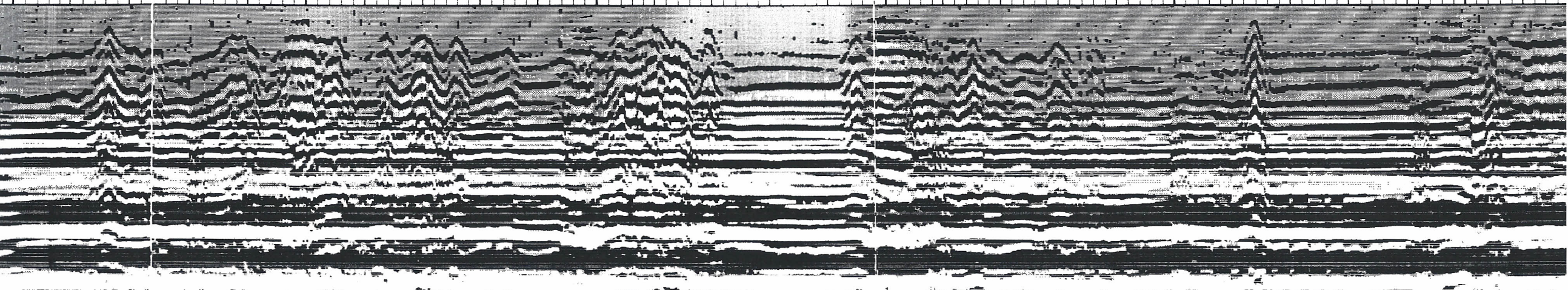
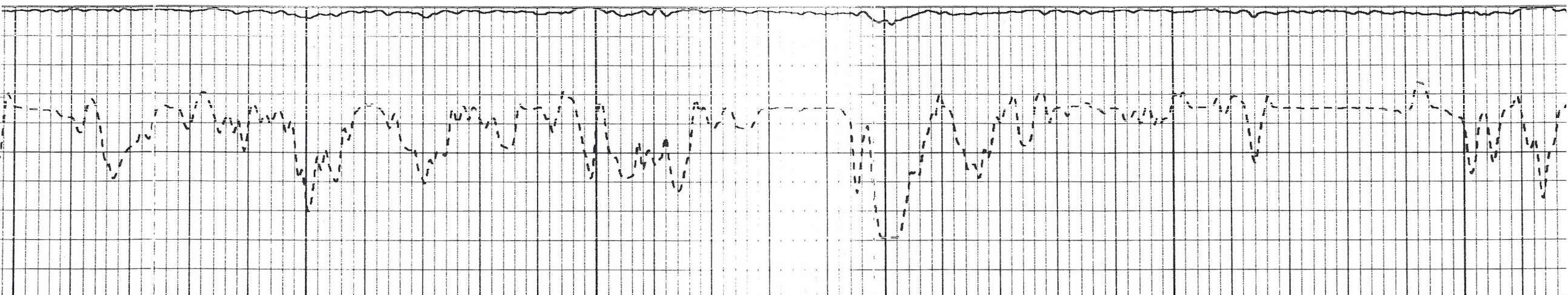
700

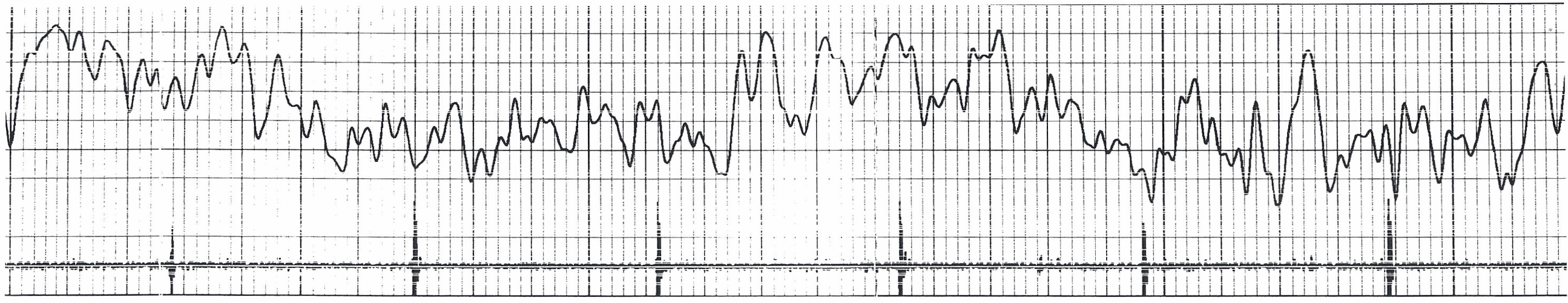
750



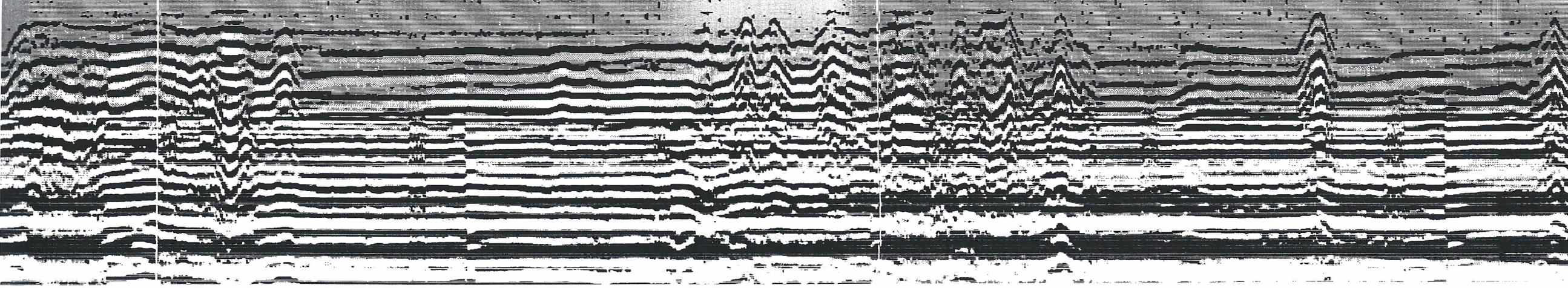
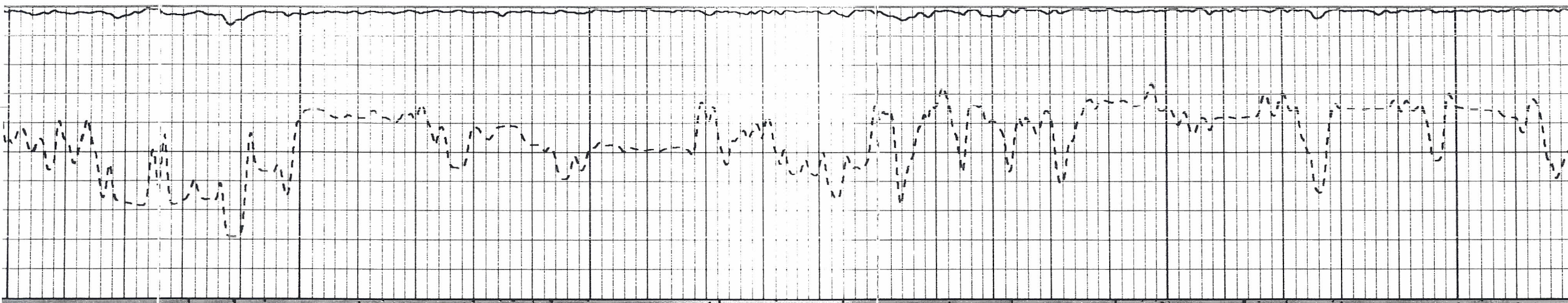


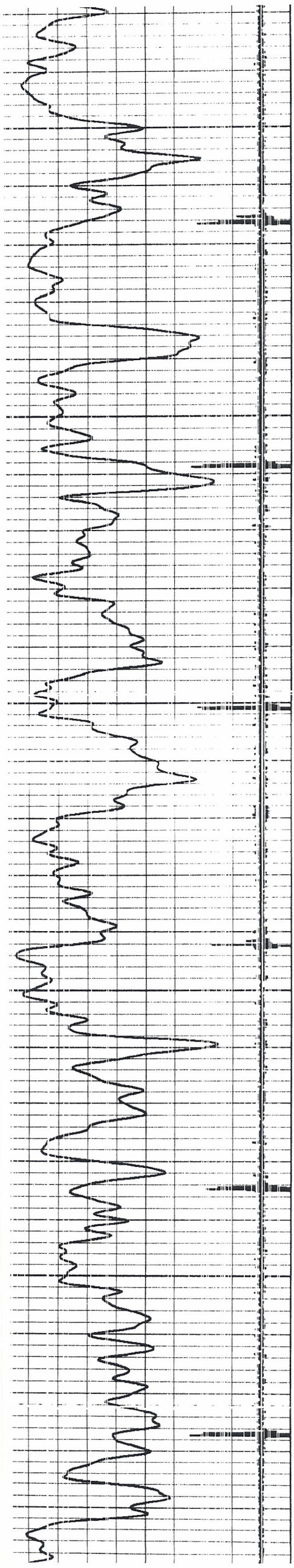
1000 950 900 850 800 750





1250 1200 1150 1100 1050 1000





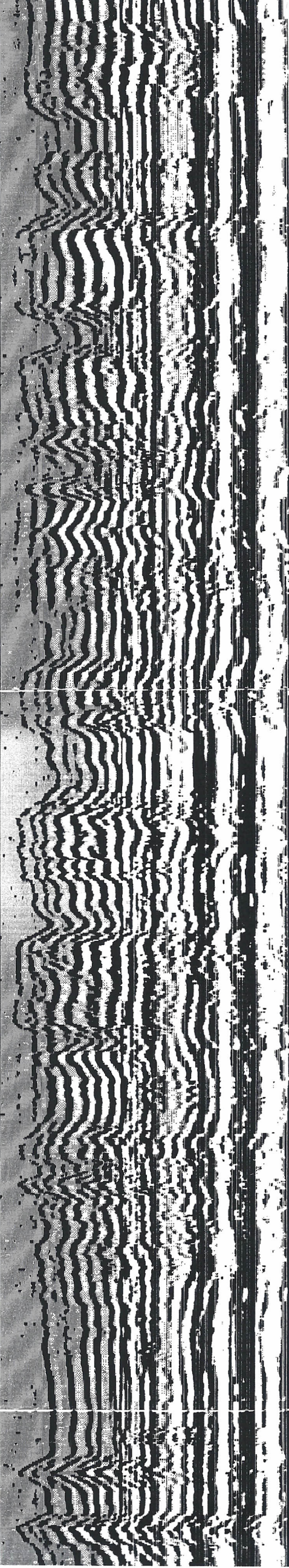
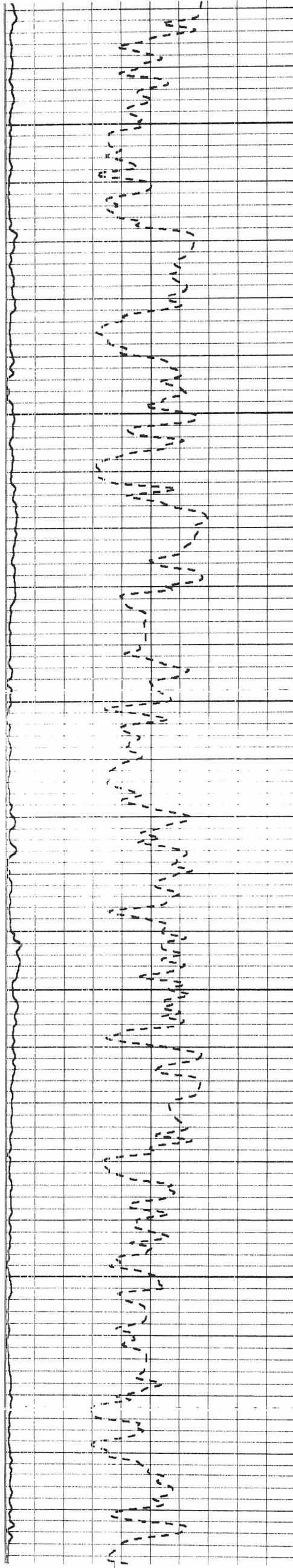
1250

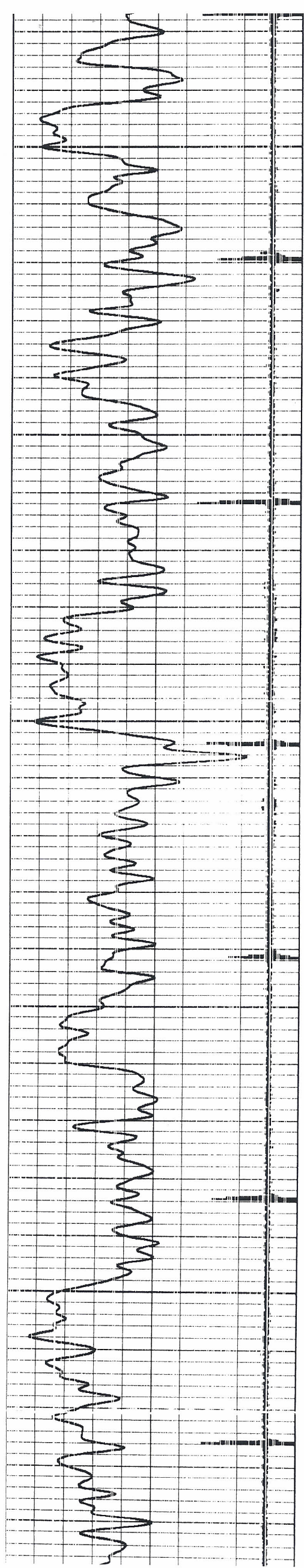
1300

1350

1400

1450





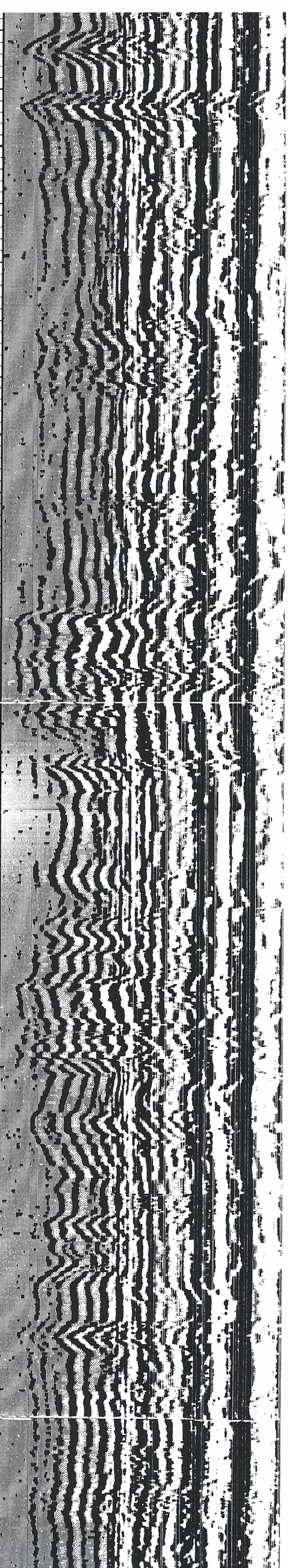
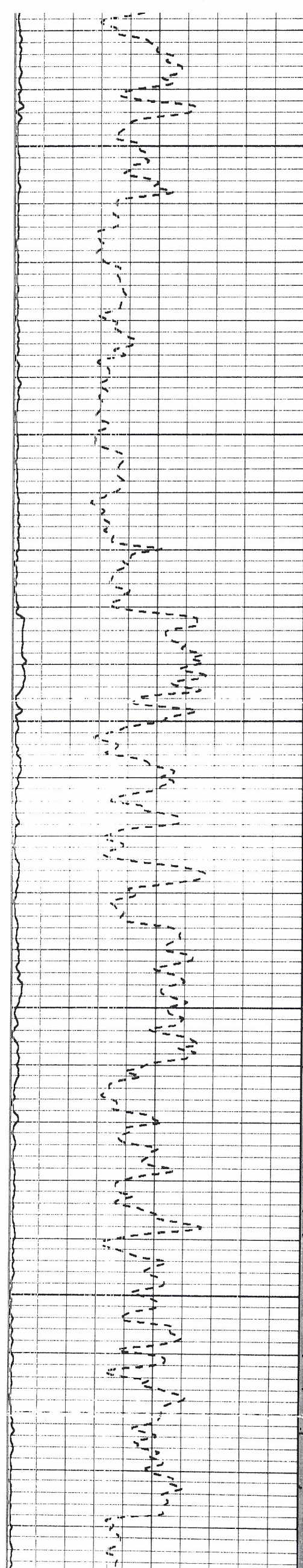
1500

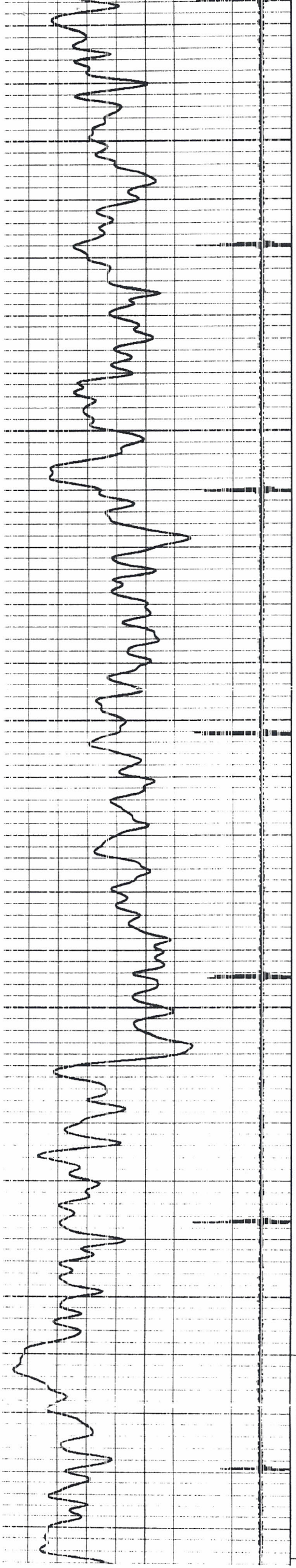
1550

1600

1650

1700





1750
1800
1850
1900
1950

4-23-15
1960'-1995'
90 SHOTS

1750

1800

1850

1900

1950

