



**MIDWEST SURVEYS**  
 LOGGING - PERFORATING - CONSULTING SERVICES  
 P.O. Box 688, Osawatomie, KS 66064  
 913.755.2128

**GAMMA RAY / NEUTRON / CCL**

File No. \_\_\_\_\_

Company **Hughes Drilling Company**

Well **Braun No. 25-1**

Field **Longanecker**

County **Johnson**

State **Kansas**

Location **1720' FSL & 2440' FEL**

**NW-SW-NW-SE**

Other Services  
Perforate

Sec. **36** Twp. **14S** Rge. **21E**

Permanent Datum **GL** Elevation **1020'** est. E. NA

Log Measured From **GL** D.F. **NA**

Drilling Measured From **GL** G.L. **1020' est**

Date **01-06-2015**

Run Number **One**

Depth Logger **942.0**

Bottom Logged Interval **896.0**

Top Log Interval **20.0**

Fluid Level **Full**

Type Fluid **Water**

Density / Viscosity **NA**

Salinity - PPM Cl **NA**

Max. Recorded Temp **NA**

Estimated Cement Top **0.0**

Equipment No. **107** Location **Osawatomie**

Recorded By **Steve Winkelsch**

Witnessed By **Jay Hughes**

BORE-HOLE RECORD				CASING RECORD			
RUN	BIT	NO.	TO	SIZE	WGT.	FROM	TO
One	9.875"	0.0	942.0	7.00"	17.0#	0.0	35.0
Two	5.675"	35.0	942.0	2.875"	6.5#	0.0	933.65
						Set	905.40

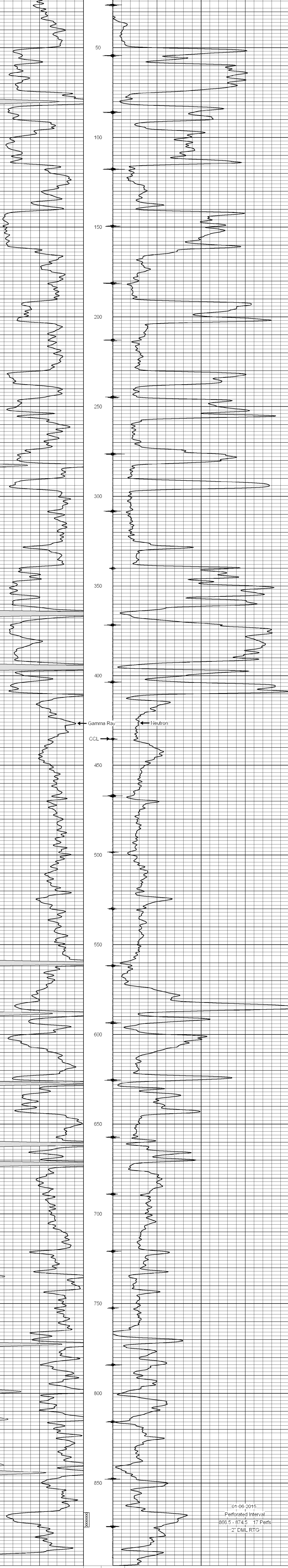
<<< Fold Here >>>

All interpretations are opinions based on inferences from electrical or other measurements and we cannot and do not guarantee the accuracy or correctness of any interpretation, and we shall not, except in the case of gross or willful negligence on our part, be liable or responsible for any loss, costs, damages, or expenses incurred or sustained by anyone resulting from any interpretation made by any of our officers, agents or employees. These interpretations are also subject to our general terms and conditions set out in our current Price Schedule.

Comments

Drilling Contractor :  
Hughes Drilling Company

Database File: braun 25i.db  
 Dataset Pathname: pass1  
 Presentation Format: gr-n-ccl  
 Dataset Creation: Tue Jan 06 11:57:34 2015 by Log SCH 111116  
 Charted by: Depth in Feet scaled 1:240



0 Gamma Ray (cps) 150  
 150 Gamma Ray (cps) 300  
 -1 CCL 1  
 10 Neutron (cps) 2100