



**MIDWEST SURVEYS**  
 LOGGING - PERFORATING - CONSULTING SERVICES  
 P.O. Box 68, Oskawille, KS 68064  
 913 / 735 - 2128

**GAMMA RAY / NEUTRON / CCL**

File No. \_\_\_\_\_  
 Company **Lakeshore Operating, LLC.**  
 Well **Shepard No. LO-54**  
 Field **Vernon**  
 County **Woodson** State **Kansas**

Location **1330' FSL & 3235' FEL**  
**NW-NE-SE-SW**

Sec. **17** Twp. **24S** Rge. **16E**  
 Permament Datum **GL** Elevation **1070'**  
 Log Measured From **GL** K B NA  
 Drilling Measured From **GL** D F NA  
 G.L. **1070'**

Date **01-02-2015**  
 Run Number **One**  
 Depth Logger **1122.0**  
 Bottom Logged Interval **1105.3**  
 Top Log Interval **200.0**  
 Fluid Level **Full**

Type Fluid **Water**  
 Density / Viscosity **NA**  
 Salinity - PPM Cl **NA**  
 Max Recorded Temp **NA**  
 Estimated Cement Top **0.0**  
 Equipment No. **104** Location **Oswatomie**  
 Recorded By **Gary Windisch**  
 Witnessed By **Wesley Ketchum**

BORE-HOLE RECORD  
 R/O No. **BIT** FROM **TO** SIZE **WGT.** FROM **TO**  
 One **9.875"** 0.0 **7.00"** 17.0 # **0.0** 40.0  
 Two **5.875"** 40.0 **1122.0** 2.875" **6.5 #** 0.0 1115.0

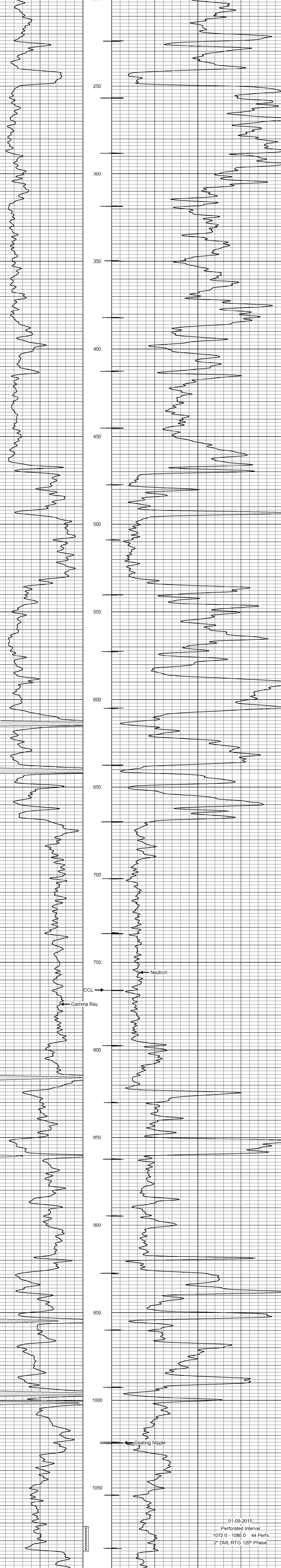
<<< Fold Here >>>

All interpretations are opinions based on inferences from electrical or other measurements and we cannot and do not guarantee the accuracy or correctness of any interpretation, and we shall not, except in the case of gross or willful negligence on our part, be liable or responsible for any loss, costs, damages, or expenses incurred or sustained by anyone resulting from any interpretation made by any of our officers, agents or employees. These interpretations are also subject to our general terms and conditions set out in our current Price Schedule.

Comments

Drilling Contractor :  
Owens Petroleum, LLC.

Database File: shepard54lo.db  
 Dataset Pathname: pass1  
 Presentation Format: gr-n-ccl  
 Dataset Creation: Fri Jan 02 10:34:24 2015 by Log SCH 111116  
 Charted by: Depth in Feet scaled 1:240



01-09-2015  
 Perforated Interval  
 1072.0 - 1086.0 44 Perfs  
 2" DML RTG 120° Phase