



Sonic Cement
Bond Log

15-119-21379

Company **McCoy Petroleum Corporation**
 Well **UMCC "A" #2-17**
 Field **Wildcat**
 County **Meade** State **Kansas**

Location
 Sec: **17** Twp: **30S** Rge: **30W**

Other Services
 Perforate

Permanent Datum **Ground Level** Elevation **2819**
 Log Measured From **Kelly Bushing** 11 Ft. Above Perm. Datum
 Drilling Measured From **Kelly Bushing**
 Run Number **One**
 Date Survey **11/5/2014**
 Date Cementing **11/11/2014**
 Type Cementing Operation **Primary**
 Depth Driller **5700**
 Depth Logger **5644**
 Logged Interval **5643 to 3550**
 Casing Driller **5.5 @ TD**
 Float Collar -- D.V. Tool **////**
 Squeeze Depth **////**
 Amount & Type Cement **////**
 Amount & Type Admix **////**
 Type Fluid In Hole **Water**
 Fluid Level **Full**
 Salinity PPM CL **////**
 Weight lb/gal -- Vis. **////**
 Approx. Logged Cement Top **3686**
 Calculated Cement Top **////**
 Max. Hole Temperature **DIG02**
 Tool No. **3-5**
 Spacing Recorded **02**
 Equipment -- Location **N. Schneider**
 Recorded By **Dave Oller**
 Witnessed By

Elevation
 K.B. 2830
 D.F. 2828
 G.L. 2819

<<< Fold Here >>>

All interpretations are opinions based on inferences from electrical or other measurements and we cannot and do not guarantee the accuracy or correctness of any interpretation, and we shall not, except in the case of gross or willful negligence on our part, be liable or responsible for any loss, costs, damages, or expenses incurred or sustained by anyone resulting from any interpretation made by any of our officers, agents or employees. These interpretations are also subject to our general terms and conditions set out in our current Price Schedule.

Comments

Thank you for using Excel Wireline (620) 388-5676

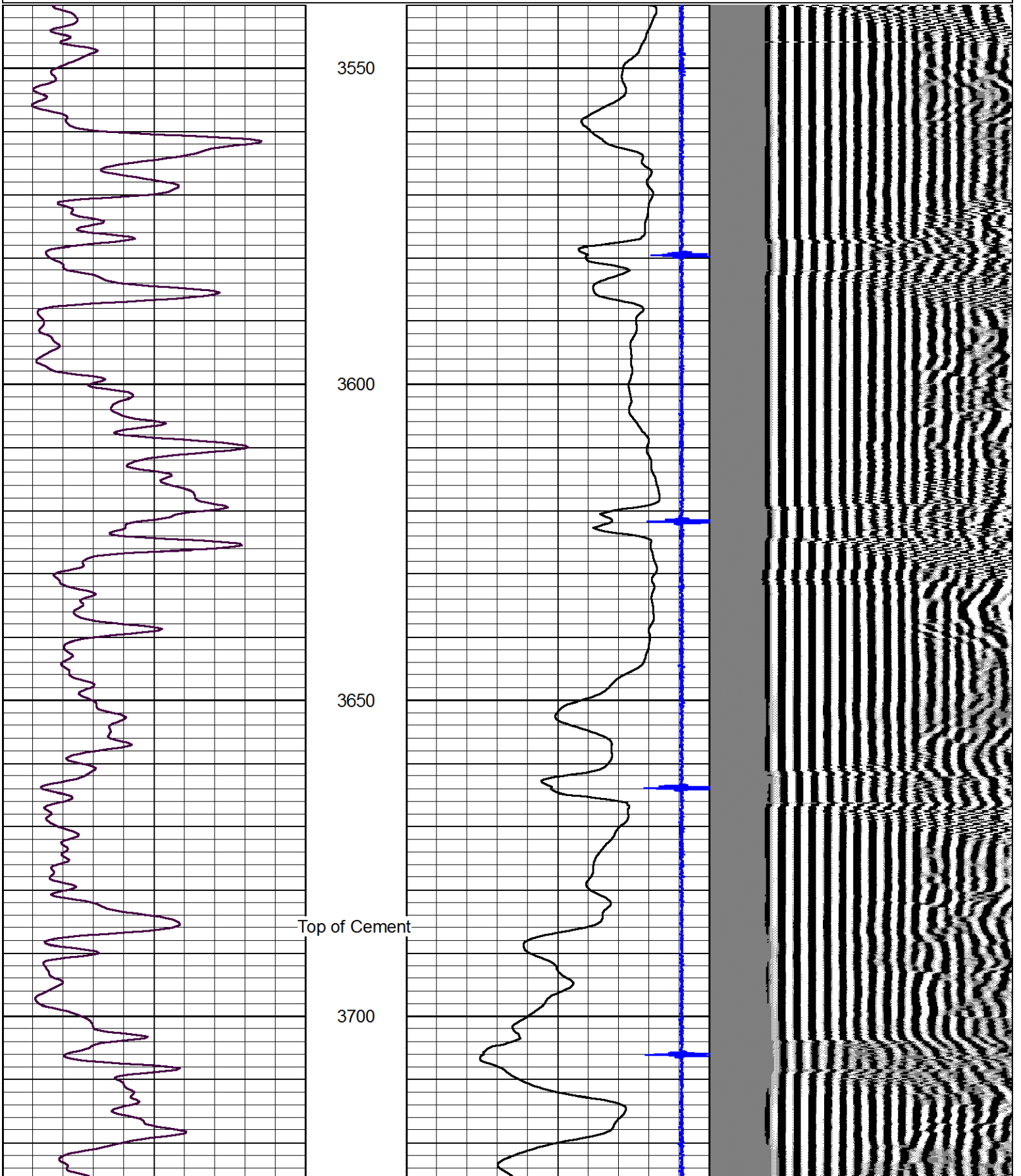
Copeland
 7 1/2 S
 1/2 E then N into

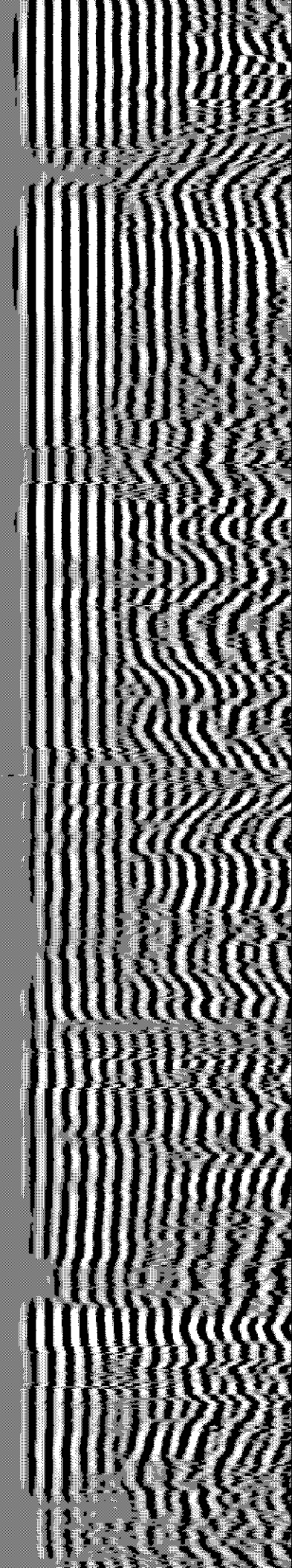
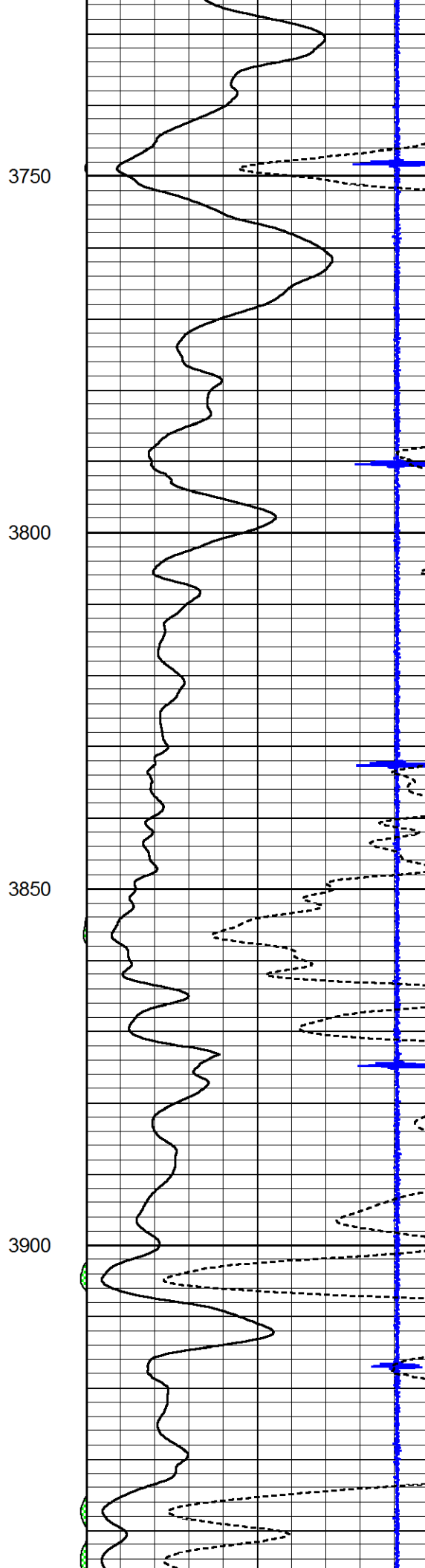
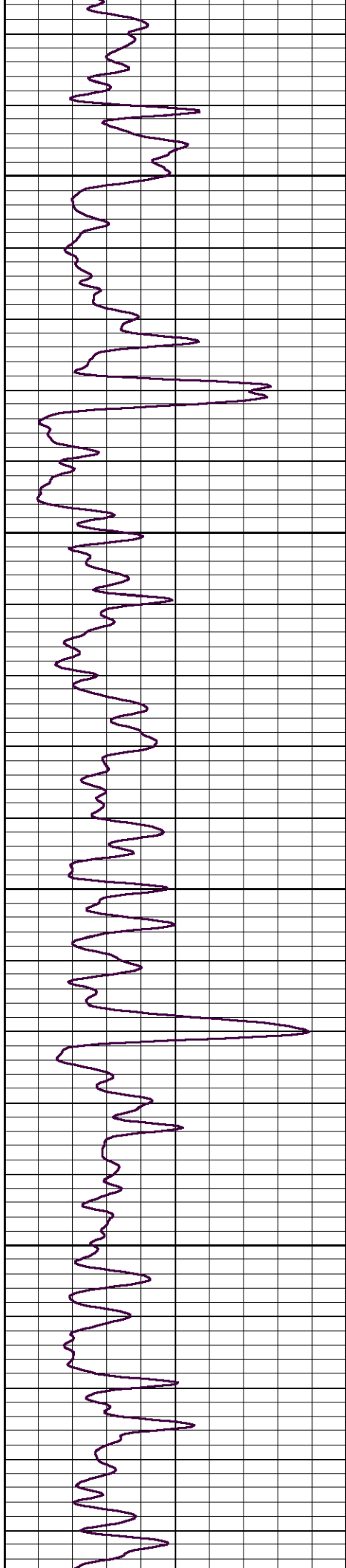


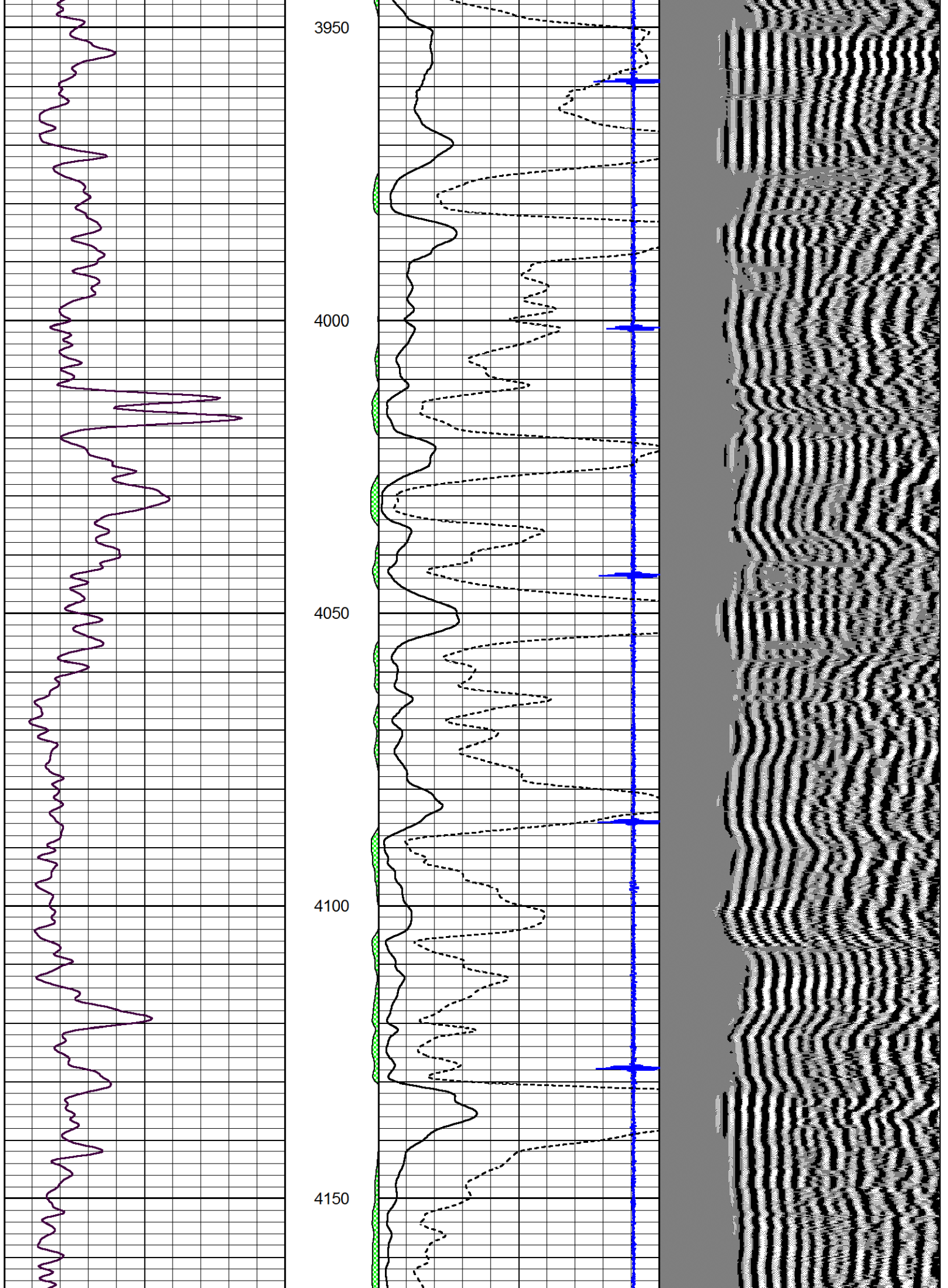
Main Pass

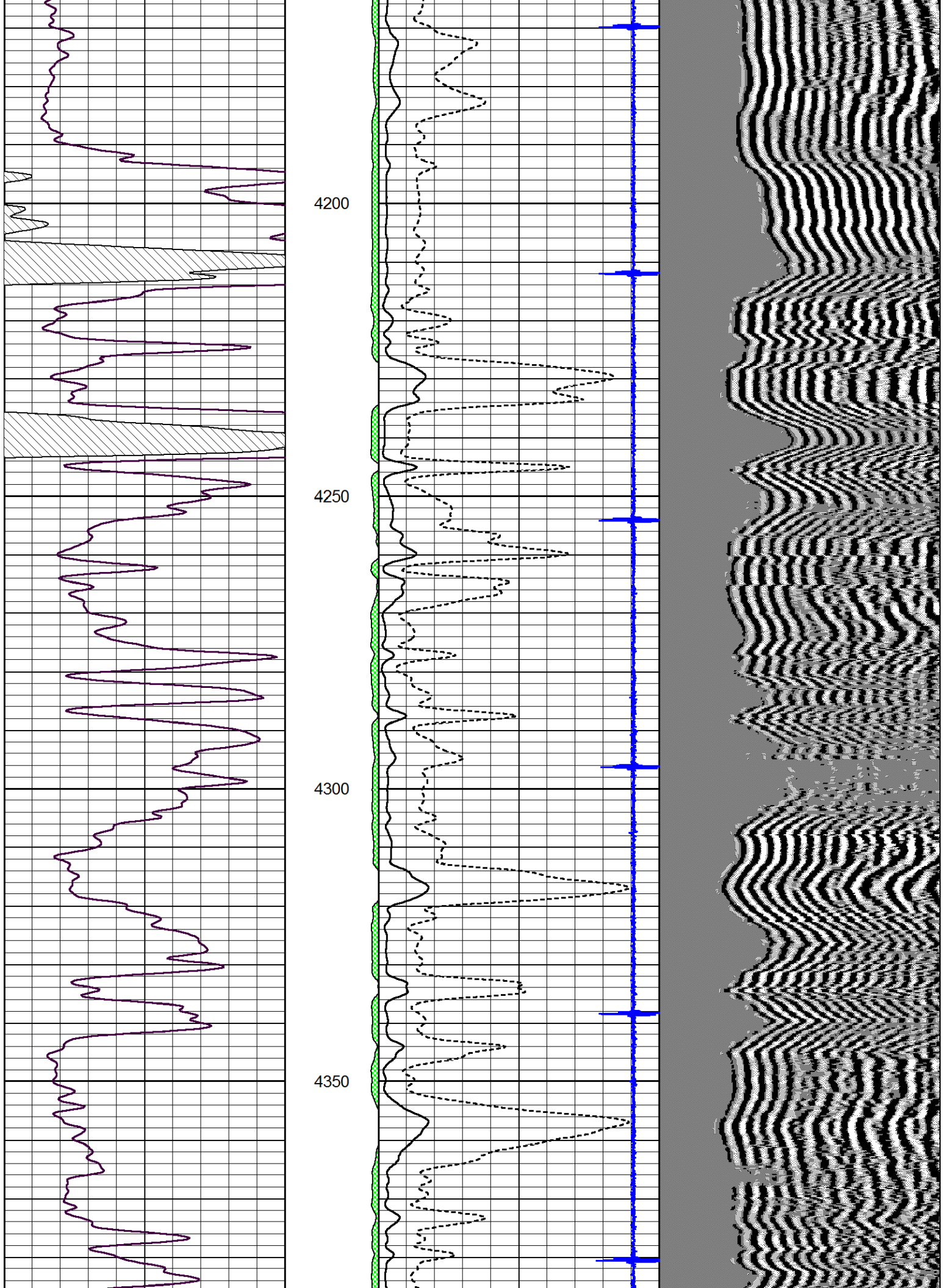
Database File mccoymccc_a_2_17.db
 Dataset Pathname grcbl/pass4
 Presentation Format cblcr
 Dataset Creation Wed Nov 05 11:53:49 2014
 Charted by Depth in Feet scaled 1:240

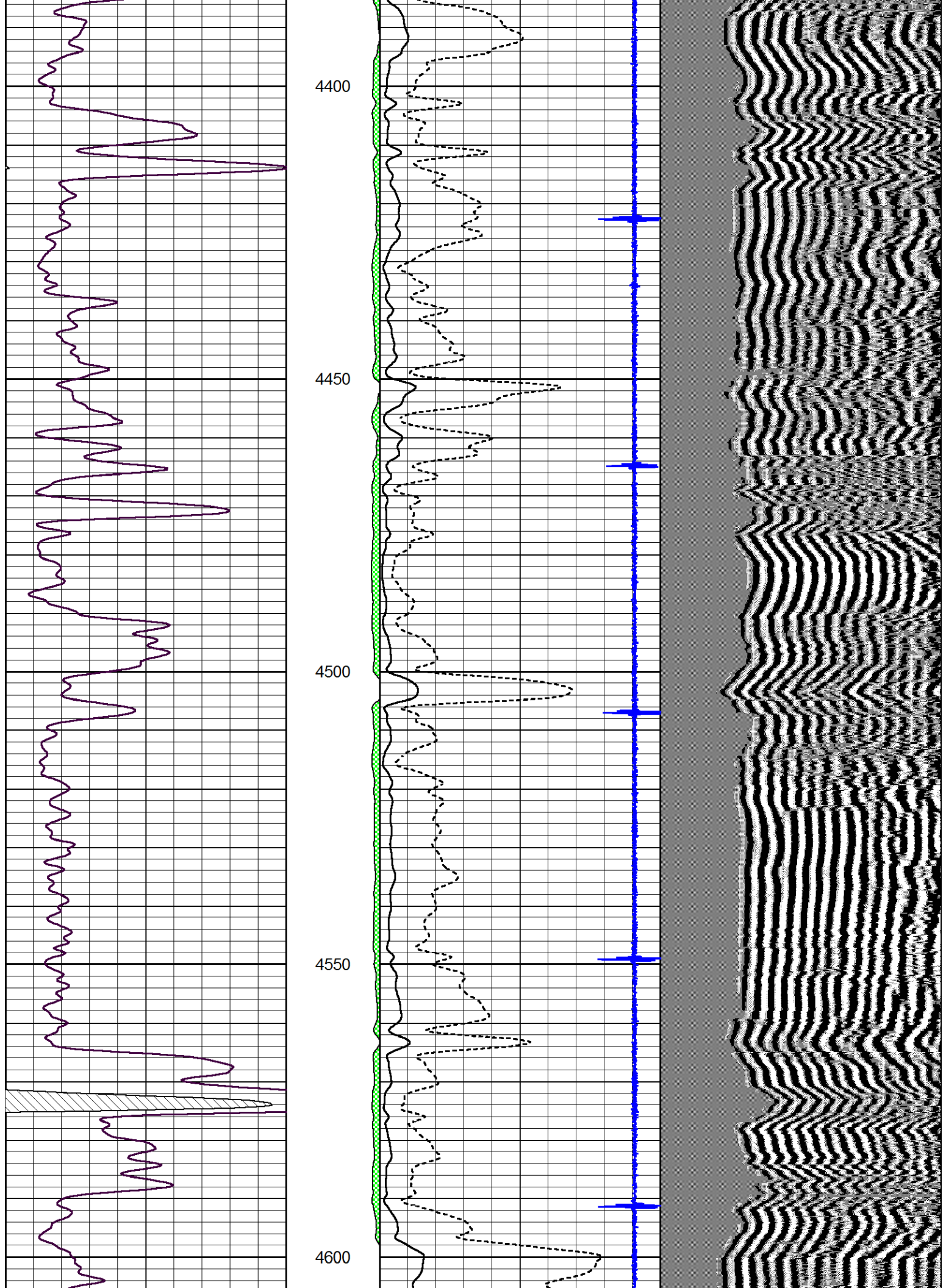
0	Gamma Ray (GAPI)	150	amp3ft	3	Casing Collars	-0.3	200	wvf5ft	1200
			(mV)	0	Amplified Amplitude (mV)	100			
			-100 10	0	Pipe Amplitude (mV)	20			

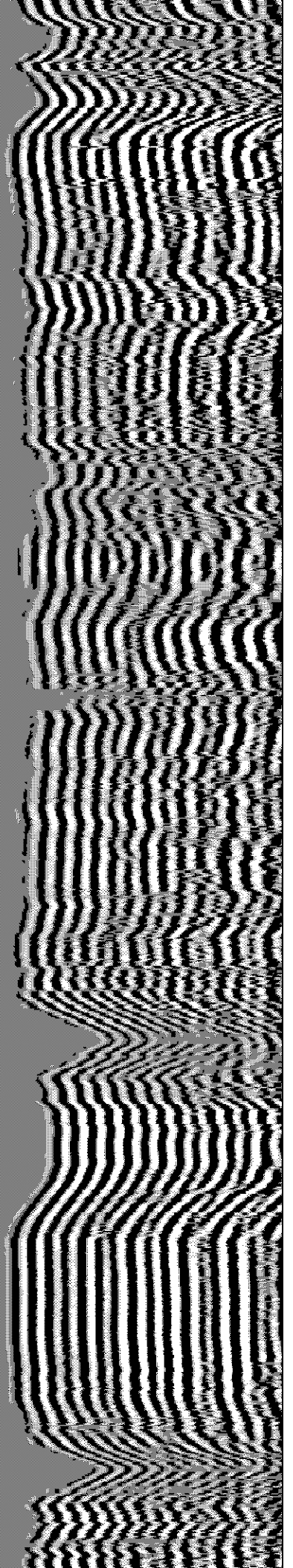
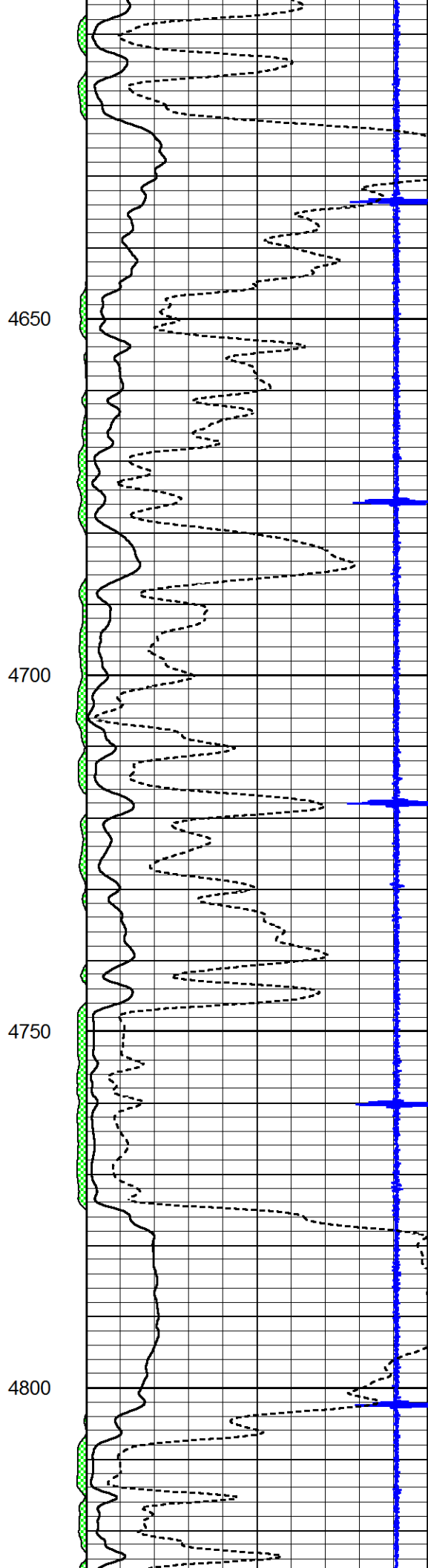
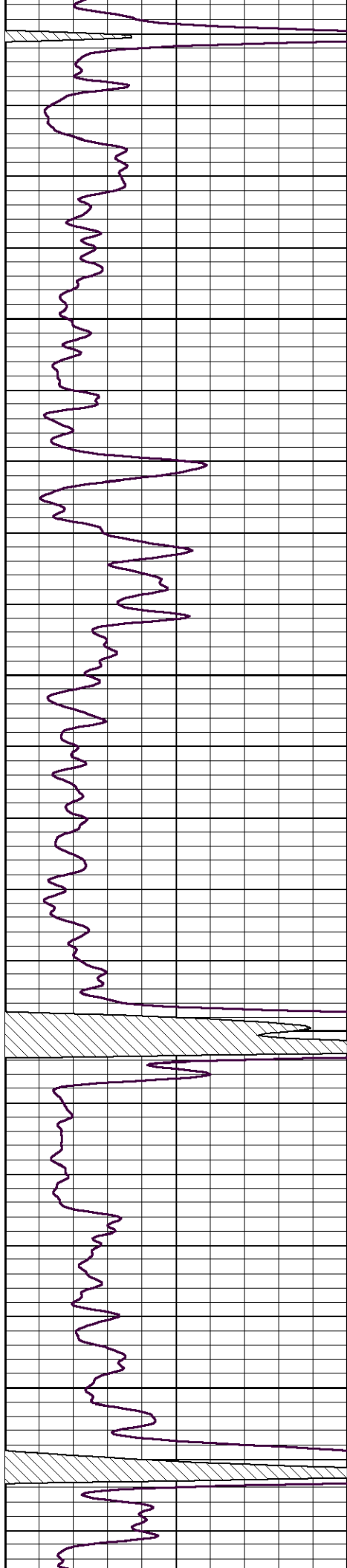


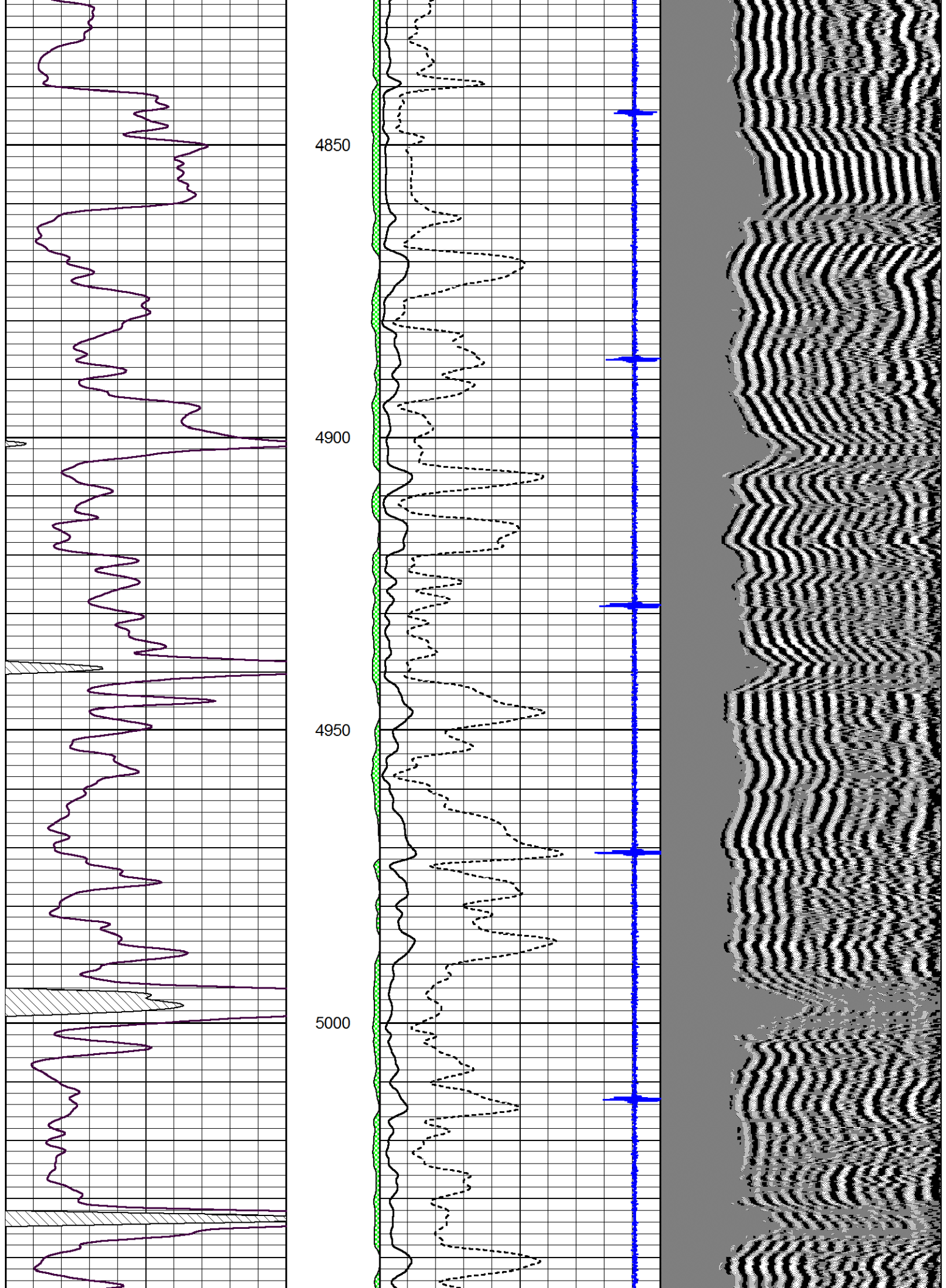


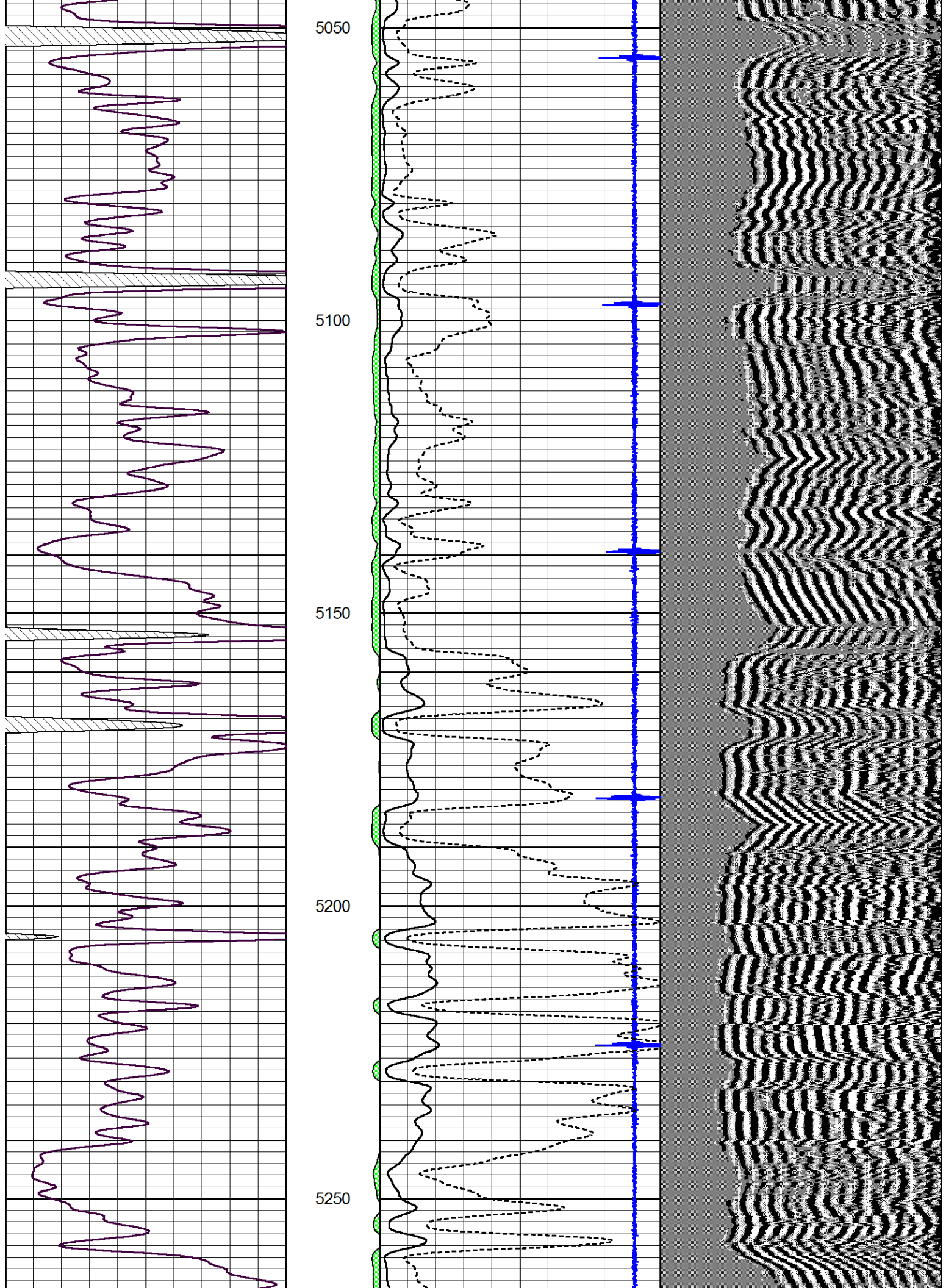


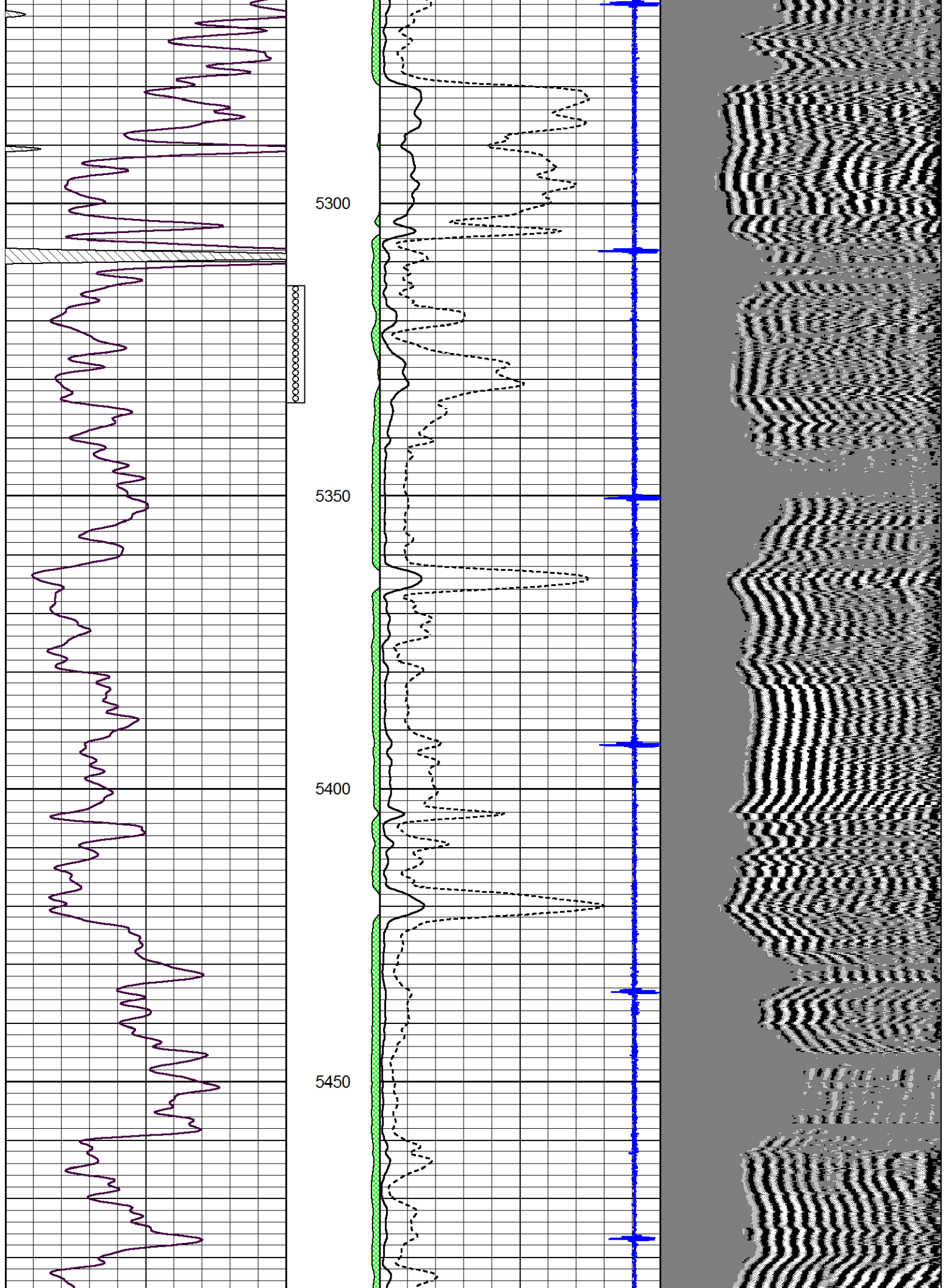


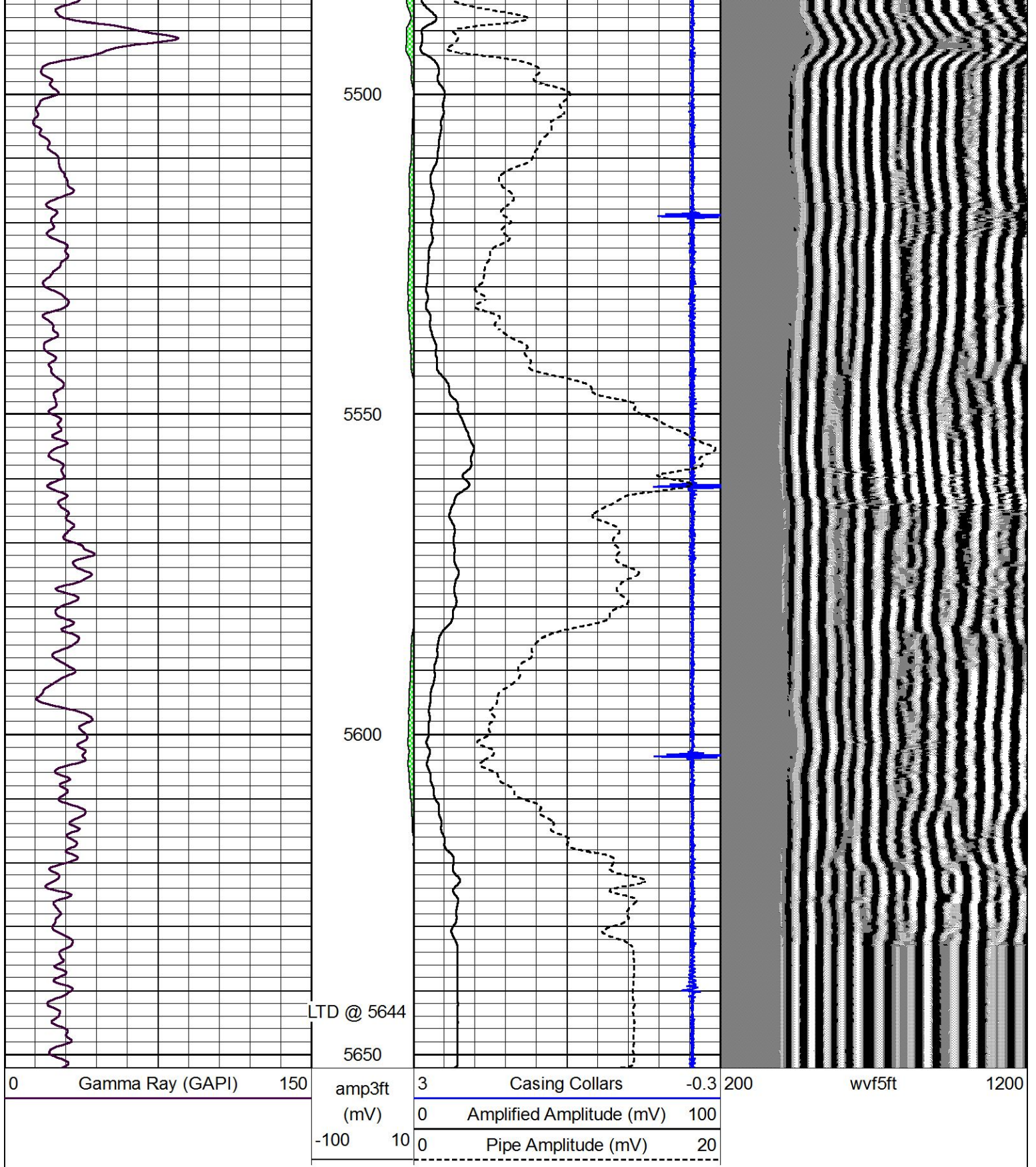








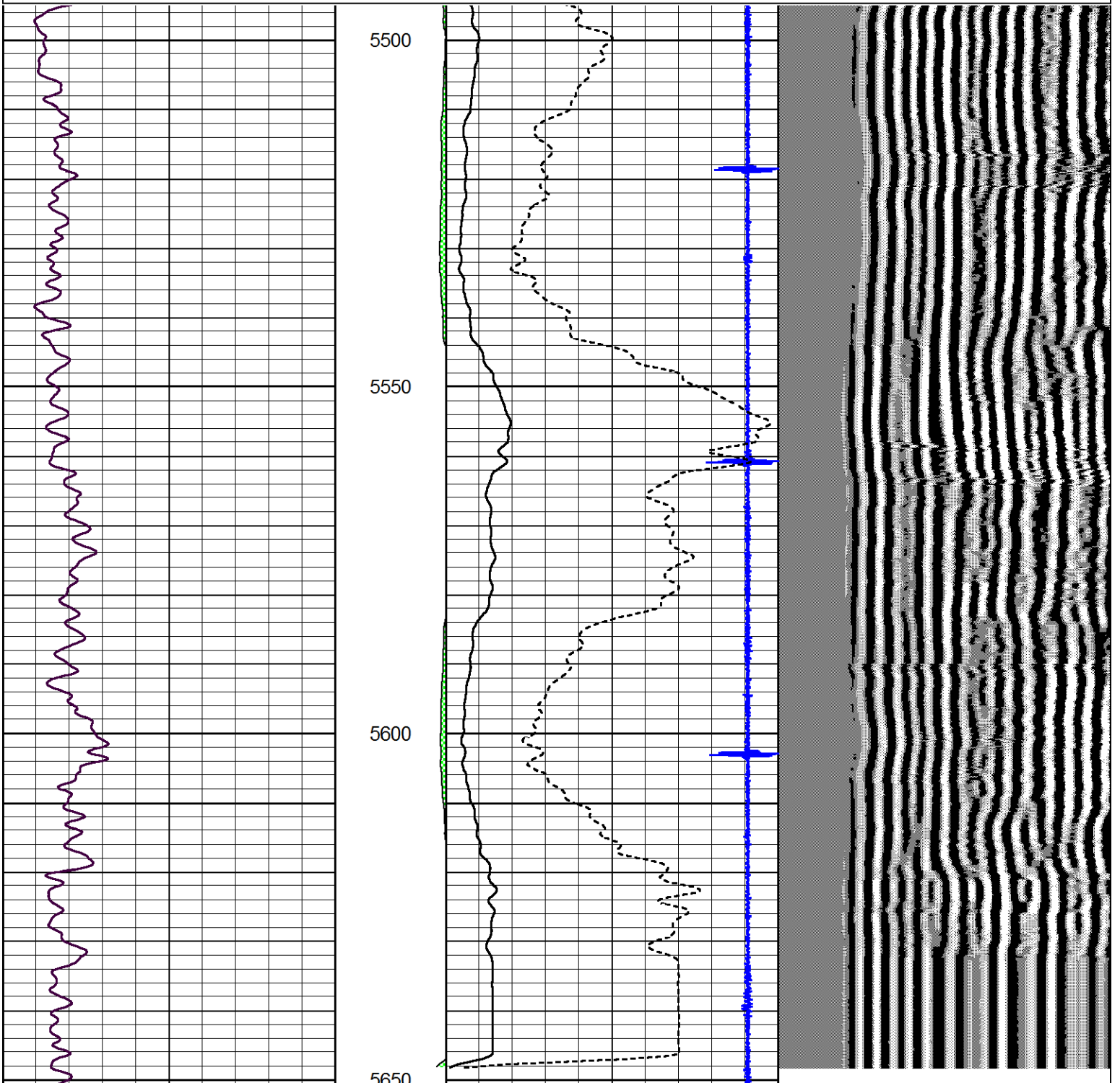




Repeat Section

Database File mccoymcc_a_2_17.db
 Dataset Pathname grcbl/pass3
 Presentation Format cldr
 Print Date 05/11/10 09:00:14

0	Gamma Ray (GAPI)	150	amp3ft	3	Casing Collars	-0.3	200	wvf5ft	1200
			(mV)	0	Amplified Amplitude (mV)	100			
			-100 10	0	Pipe Amplitude (mV)	20			



0	Gamma Ray (GAPI)	150	amp3ft	3	Casing Collars	-0.3	200	wvf5ft	1200
			(mV)	0	Amplified Amplitude (mV)	100			
			-100 10	0	Pipe Amplitude (mV)	20			