



**COMPLETION
& PRODUCTION
SERVICES CO.**

**MICRO
LOG**

Company NORSTAR PETROLEUM, INC.
Well TUCKER #3-34
Field WILD CAT
County STANTON State KANSAS

Company NORSTAR PETROLEUM, INC.
Well TUCKER #3-34
Field WILD CAT
County STANTON
State KANSAS

Location: API #: 15-187-21317-00-00
972' FNL & 414' FEL
NW - SE - NE - NE
SEC 34 TWP 30S RGE 41W
GROUND LEVEL Elevation 3393
Log Measured From KELLY BUSHING 12' A.G.L.
Drilling Measured From KELLY BUSHING

Other Services
CNL/CDL
DIL
Elevation
K.B. 3405
D.F. 3403
G.L. 3393

Date	1/1/15		
Run Number	TWO		
Depth Driller	5530		
Depth Logger	5532		
Bottom Logged Interval	5530		
Top Log Interval	4700		
Casing Driller	8 5/8 @ 1600'		
Casing Logger	1606'		
Bit Size	7.875		
Type Fluid in Hole	CHEMICAL MUD		
Density / Viscosity	9.145	CHLORIDES 700 PPM	
pH / Fluid Loss	9.5/7.6		
Source of Sample	FLOWLINE		
Rm @ Meas. Temp	1.50 @ 70F		
Rmf @ Meas. Temp	1.13 @ 70F		
Rmc @ Meas. Temp	1.80 @ 70F		
Source of Rmf / Rmc	MEASURED		
Rm @ BHT	0.81 @ 130F		
Time Circulation Stopped	2 HOURS		
Time Logger on Bottom			
Maximum Recorded Temperature	130F		
Equipment Number	3802		
Location	HAYS, KS.		
Recorded By	IAN MABB		
Witnessed By	TOM WILLIAMS		

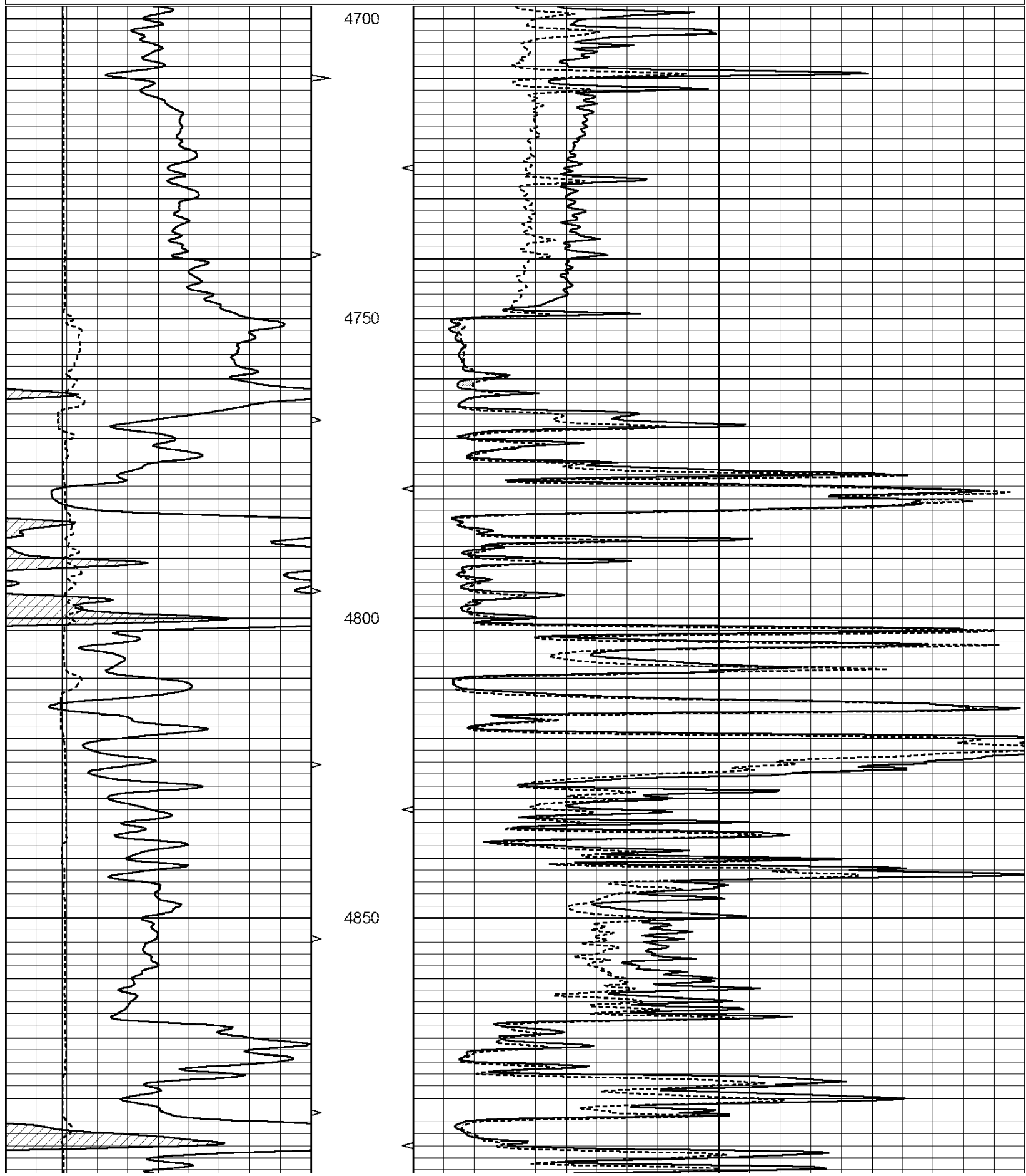
<<< Fold Here >>>

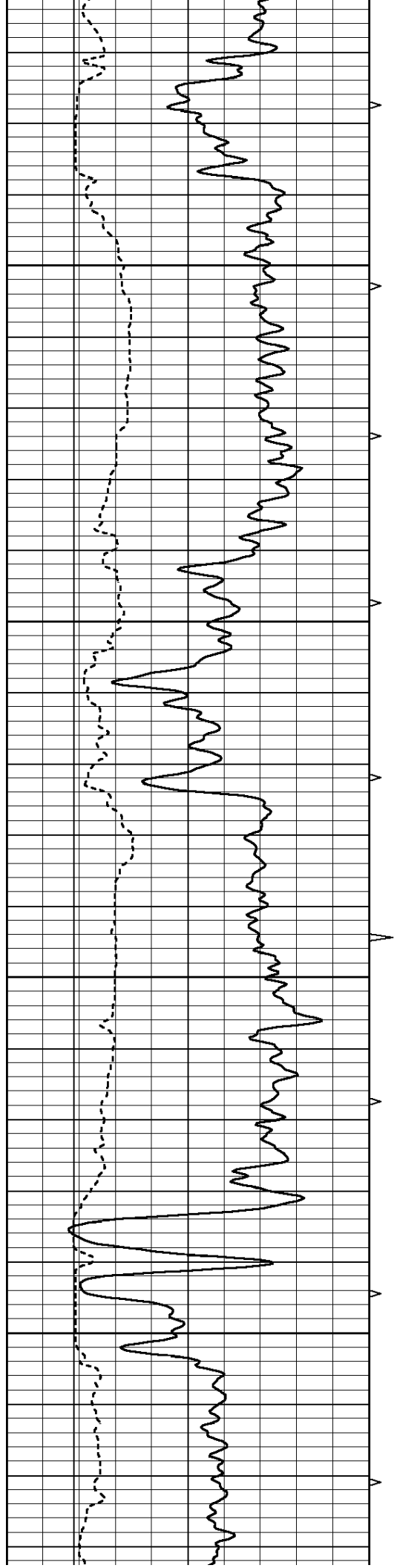
All interpretations are opinions based on inferences from electrical or other measurements and we cannot and do not guarantee the accuracy or correctness of any interpretation, and we shall not, except in the case of gross or willful negligence on our part, be liable or responsible for any loss, costs, damages, or expenses incurred or sustained by anyone resulting from any interpretation made by any of our officers, agents or employees. These interpretations are also subject to our general terms and conditions set out in our current Price Schedule.

Comments

NABORS COMPLETION & PRODUCTION SERVICES CO.
785 (628 - 6395)
THANK YOU FOR YOUR BUSINESS
DIRECTIONS : JOHNSON CITY, KS. - HWY 27 & 160 - 13 MILES SOUTH TO COUNTY LINE - 3/4 WEST -
NORTH INTO 3/4

0	GAMMA RAY (GAPI)	150	ABHV	0	MEL1.5 (Ohm-m)	40
6	CALIPER (in)	16	10 (ft3)	0 0	MEL2.0 (Ohm-m)	40
			TBHV			
			0 (ft3) 10			



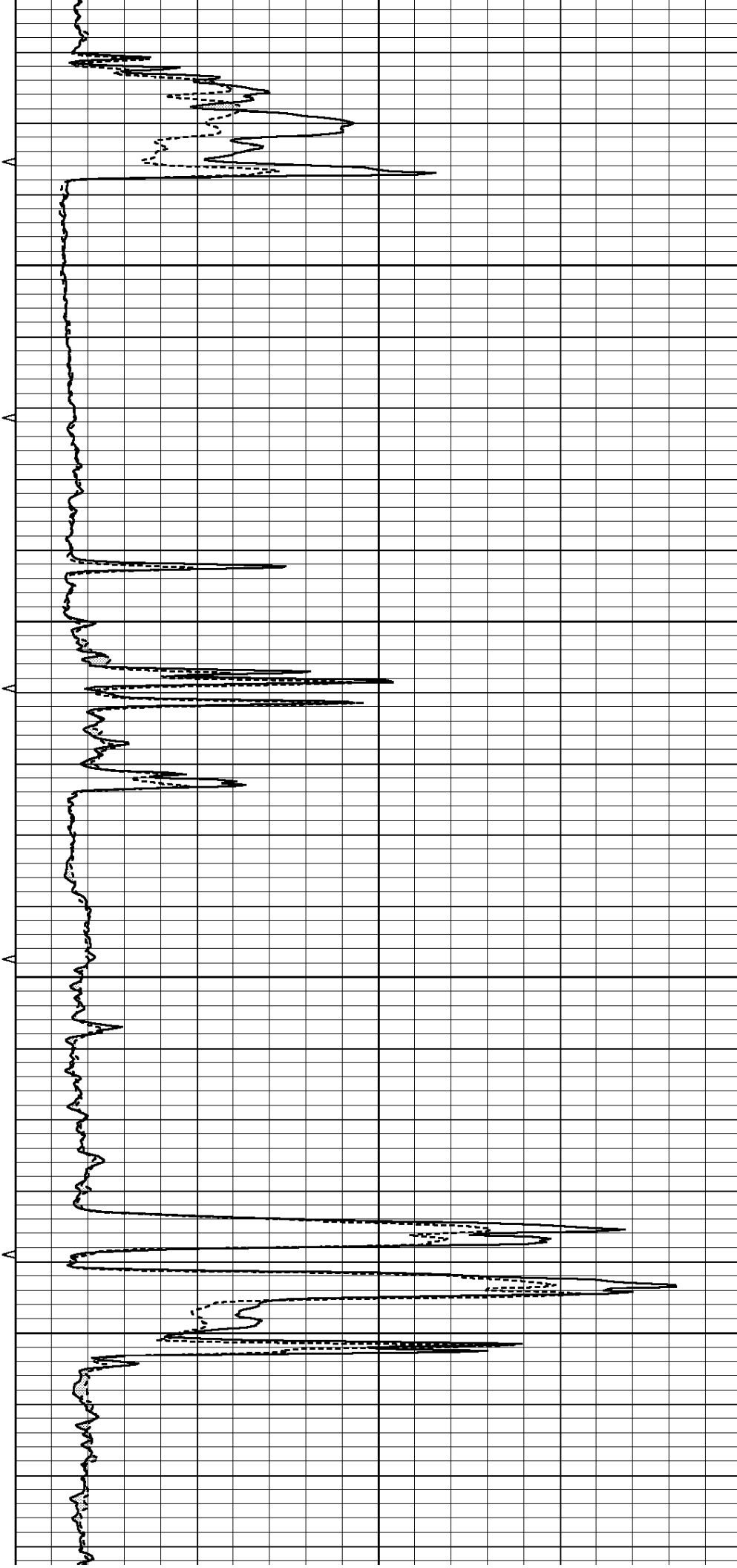


5150

5200

5250

5300



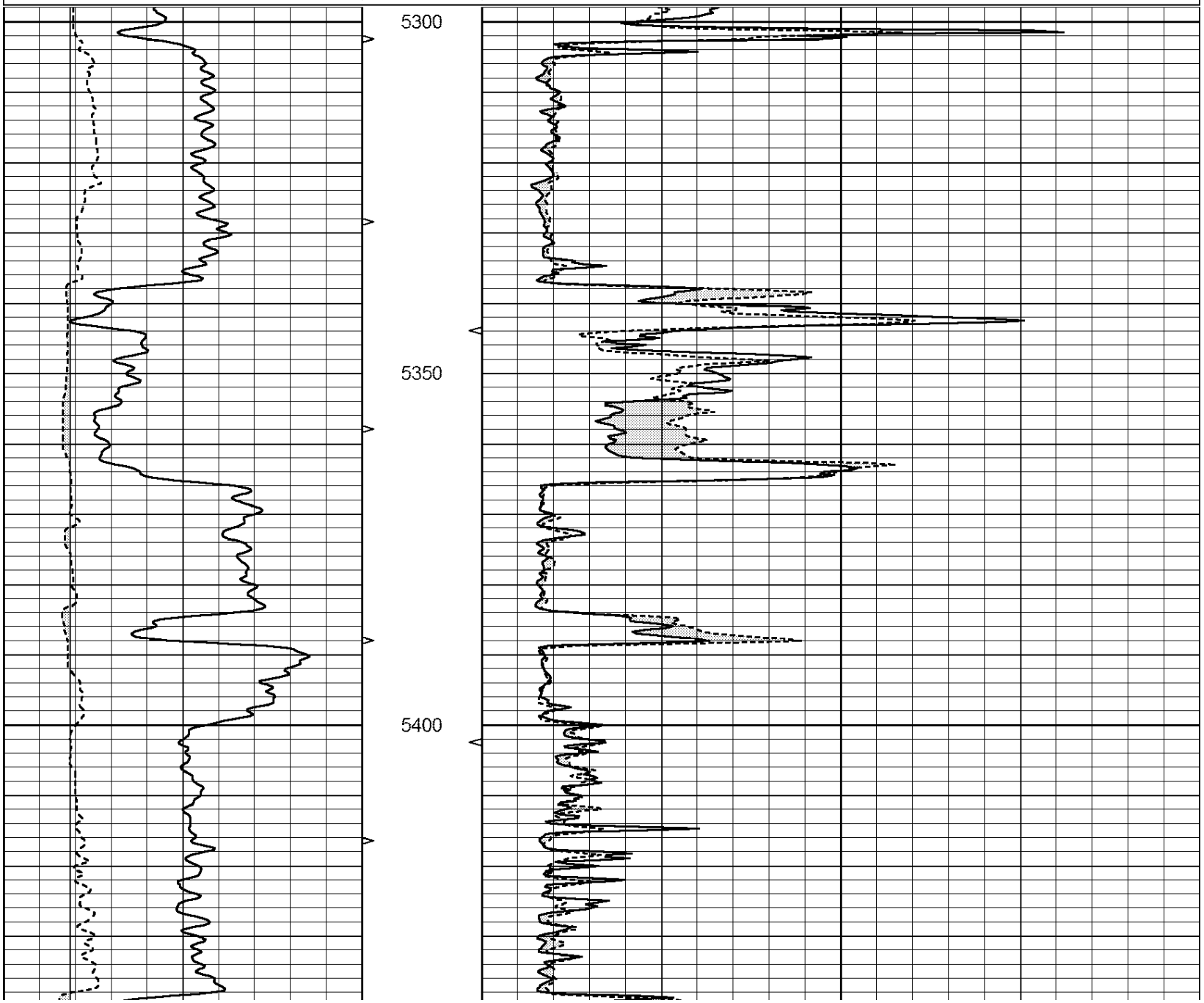
TBHV
0 (ft3) 10

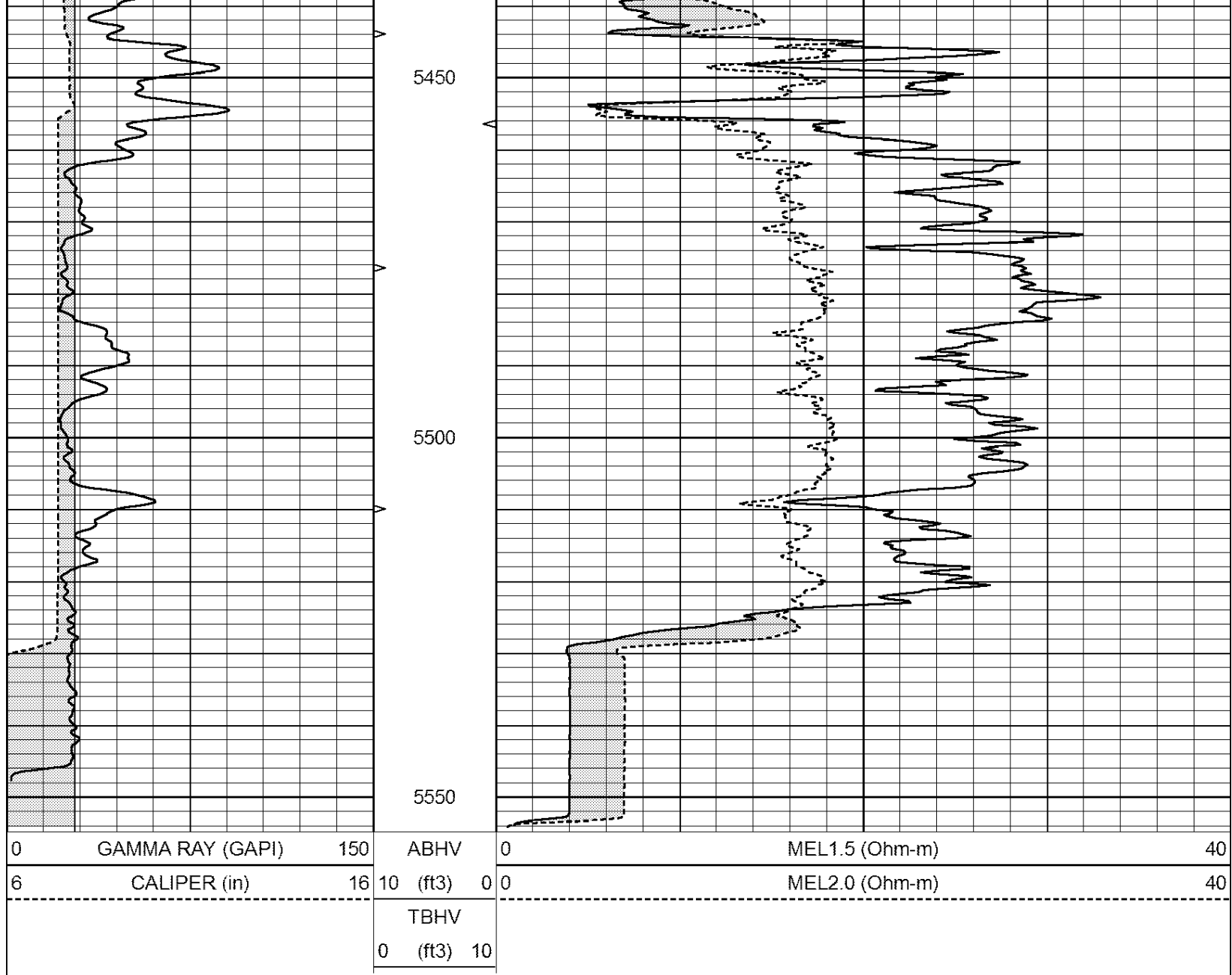


REPEAT SECTION

Database File: 26428ddn.db
 Dataset Pathname: pass5.2
 Presentation Format: _micro
 Dataset Creation: Thu Jan 01 10:45:55 2015 by Calc Open-Cased 090629
 Charted by: Depth in Feet scaled 1:240

0	GAMMA RAY (GAPI)	150	ABHV	0	MEL1.5 (Ohm-m)	40
6	CALIPER (in)	16	10 (ft3)	0 0	MEL2.0 (Ohm-m)	40
			TBHV			
			0 (ft3) 10			





Calibration Report

Database File: 26428ddn.db
 Dataset Pathname: pass6.1
 Dataset Creation: Thu Jan 01 10:39:54 2015 by Calc Open-Cased 090629

MICRO Calibration Report

Serial Number: 070911
 Tool Model: Probel
 Performed: Thu Nov 20 18:56:37 2014

Caliper Calibration:	Gain=4.161	Offset=2.200
References	Low Cal 8.000	High Cal 14.000
Readings	1.333	2.775

1.5" Calibration:	Gain=18.000	Offset=1.000
References	Low Cal 0.000	High Cal 20.000
Readings	0.004	0.843

2" Calibration:	Gain=30.000	Offset=0.650
-----------------	-------------	--------------

References	Low Cal	High Cal
Readings	0.000	20.000
	0.021	0.810

Gamma Ray Calibration Report

Serial Number:	7	
Tool Model:	Probe1	
Performed:	Thu Jan 01 09:43:47 2015	
Calibrator Value:	1.0	GAPI
Background Reading:	0.0	cps
Calibrator Reading:	1.0	cps
Sensitivity:	0.5000	GAPI/cps