



**COMPLETION
& PRODUCTION
SERVICES CO.**

**MICRO
LOG**

Company	RAYMOND OIL COMPANY, INC.	Company	RAYMOND OIL COMPANY, INC.
Well	#1 MRLI UNIT	Well	#1 MRLI UNIT
Field	WILD CAT	Field	WILD CAT
County	LANE	County	LANE
State	KANSAS	State	KANSAS
Location:	AP1 # : 15-101-22514-0000	Other Services	CDL/CNL DIL
	958' FSL & 138' FWL	Elevation	
	SEC 23 TWP 18S RGE 27W	K.B. 2634	
Permanent Datum	GROUND LEVEL	D.F. 2632	
Log Measured From	KELLY BUSHING 5' A.G.L.	G.L. 2629	
Drilling Measured From	KELLY BUSHING		

Date	1/16/15
Run Number	TWO
Depth Driller	4640
Depth Logger	4643
Bottom Logged Interval	4641
Top Log Interval	3400
Casing Driller	8 5/8" @ 260
Casing Logger	258
Bit Size	7 7/8"
Type Fluid in Hole	CHEMICAL MUD
Density / Viscosity	9.4/45
pH / Fluid Loss	9.5/8.0
Source of Sample	FLOWLINE
Rm @ Meas. Temp	1.0 @ 55F
Rmt @ Meas. Temp	.75 @ 55F
Rmc @ Meas. Temp	1.2 @ 55F
Source of Rmf / Rmc	MEASUREMENT
Rm @ BHT	.45 @ 122F
Time Circulation Stopped	2 HOURS
Time Logger on Bottom	
Maximum Recorded Temperature	122F
Equipment Number	4010
Location	HAYS, KANSAS
Recorded By	JASON CAPPELLUCCI
Witnessed By	KIM SHOEMAKER

<<< Fold Here >>>

All interpretations are opinions based on inferences from electrical or other measurements and we cannot and do not guarantee the accuracy or correctness of any interpretation, and we shall not, except in the case of gross or willful negligence on our part, be liable or responsible for any loss, costs, damages, or expenses incurred or sustained by anyone resulting from any interpretation made by any of our officers, agents or employees. These interpretations are also subject to our general terms and conditions set out in our current Price Schedule.

Comments

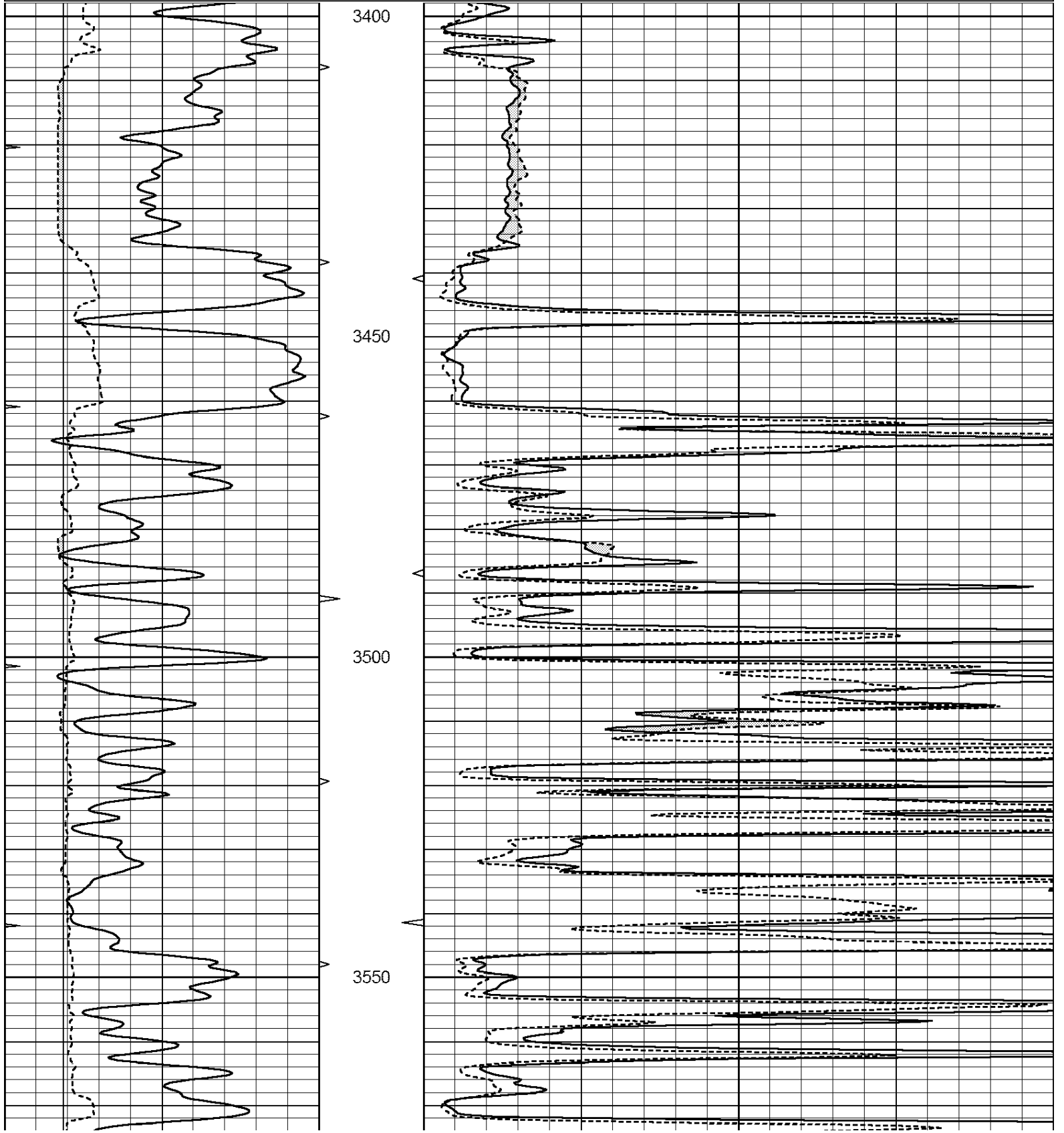
THANK YOU FOR USING NABORS, HAYS, KS. (785) 628-6395
DIRECTIONS:
DIGHTON, KS. - EAST TO MILE MARKER 96 - SOUTH INTO ON TRAIL

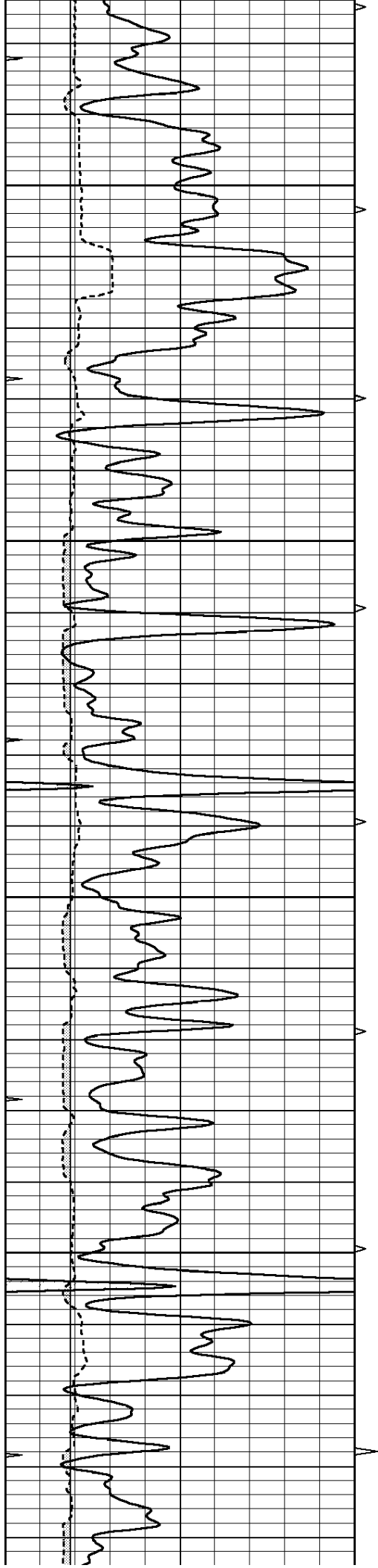


MAIN SECTION

Database File: 26527ddn.db
 Dataset Pathname: pass6.1
 Presentation Format: _micro
 Dataset Creation: Fri Jan 16 07:46:42 2015 by Calc Open-Cased 090629
 Charted by: Depth in Feet scaled 1:240

0	GAMMA RAY (GAPI)	150	ABHV	0	MEL1.5 (Ohm-m)	40
6	CALIPER (in)	16	10 (ft3)	0	MEL2.0 (Ohm-m)	40
0	MINMK	20	TBHV			
			0 (ft3)	10		



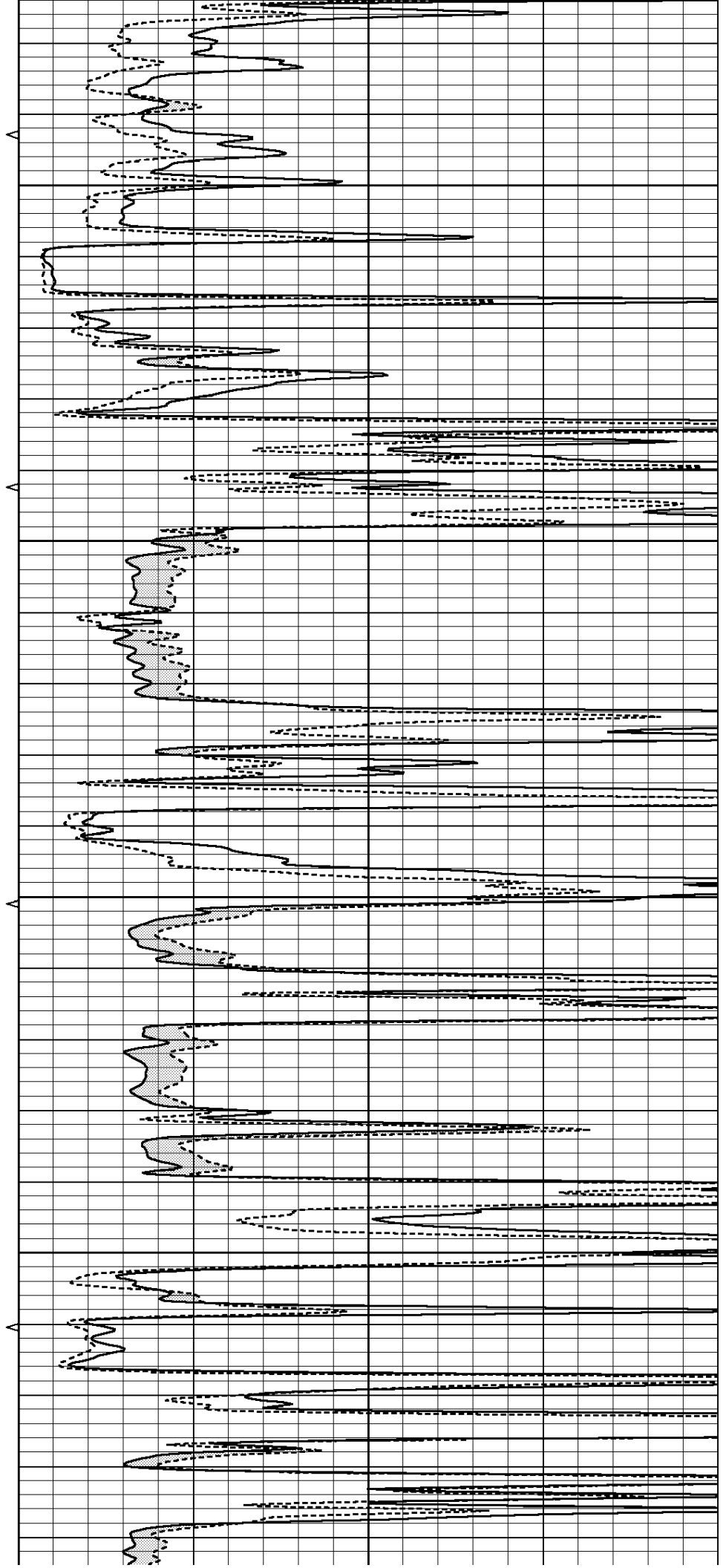


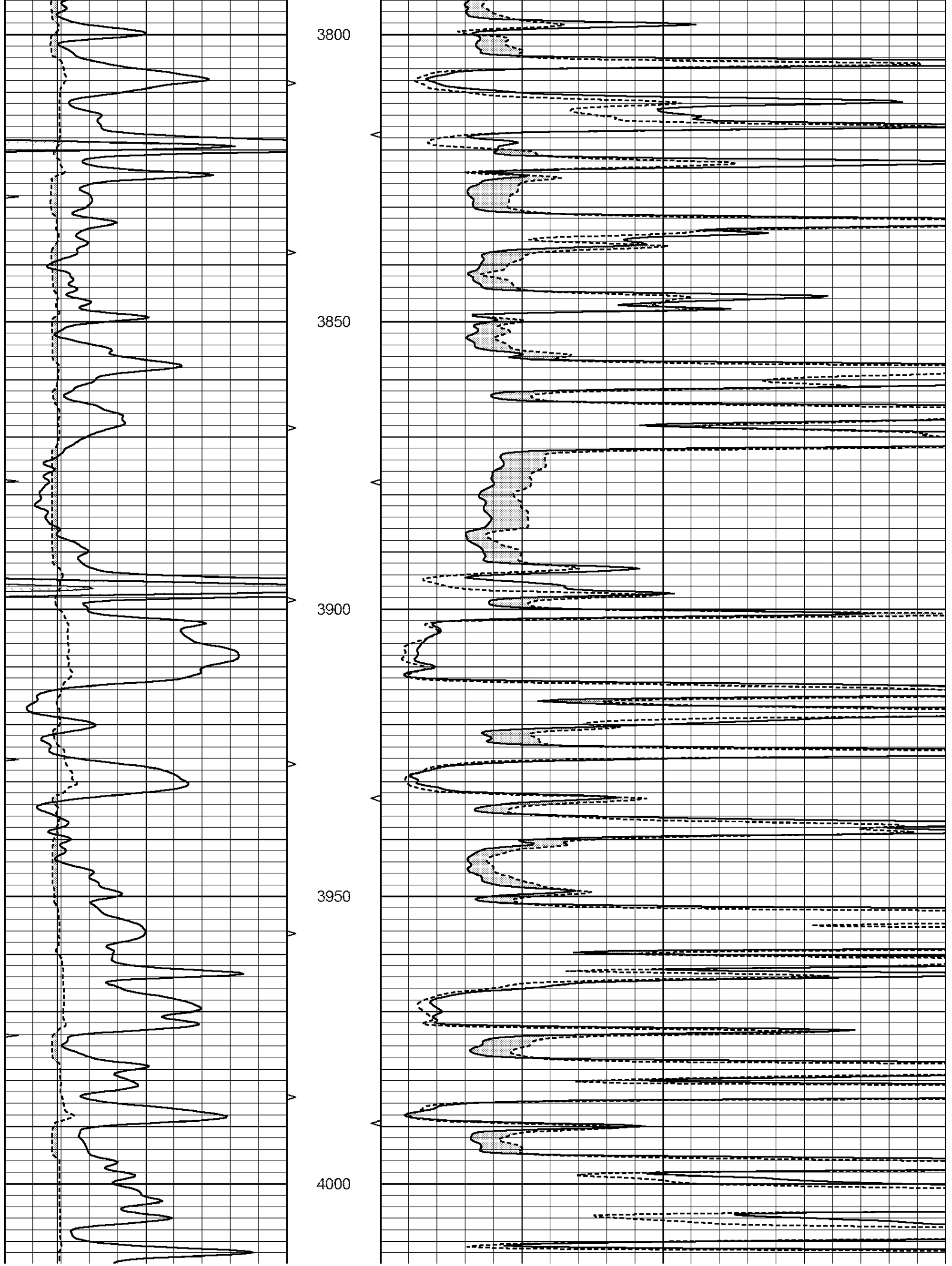
3600

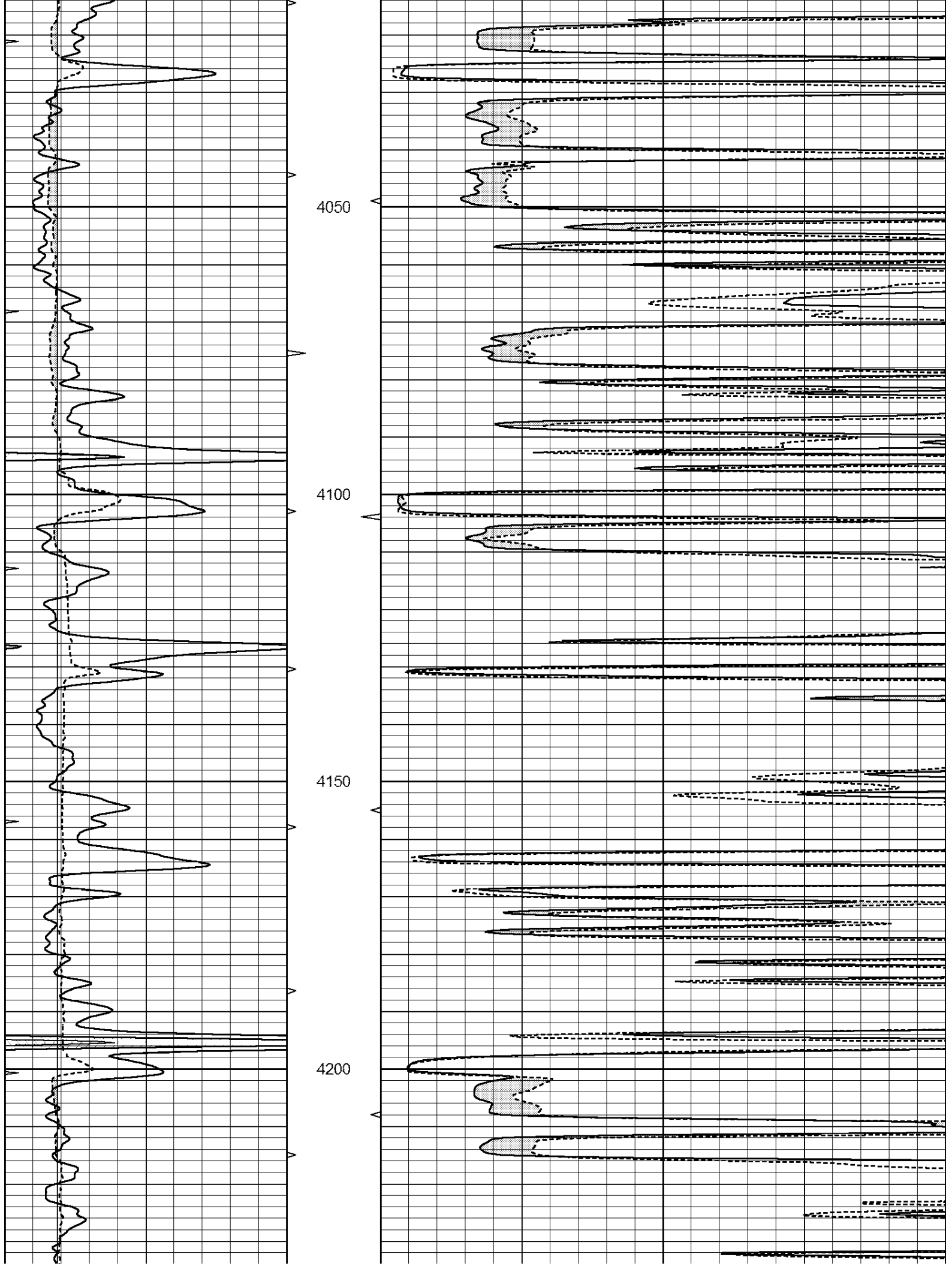
3650

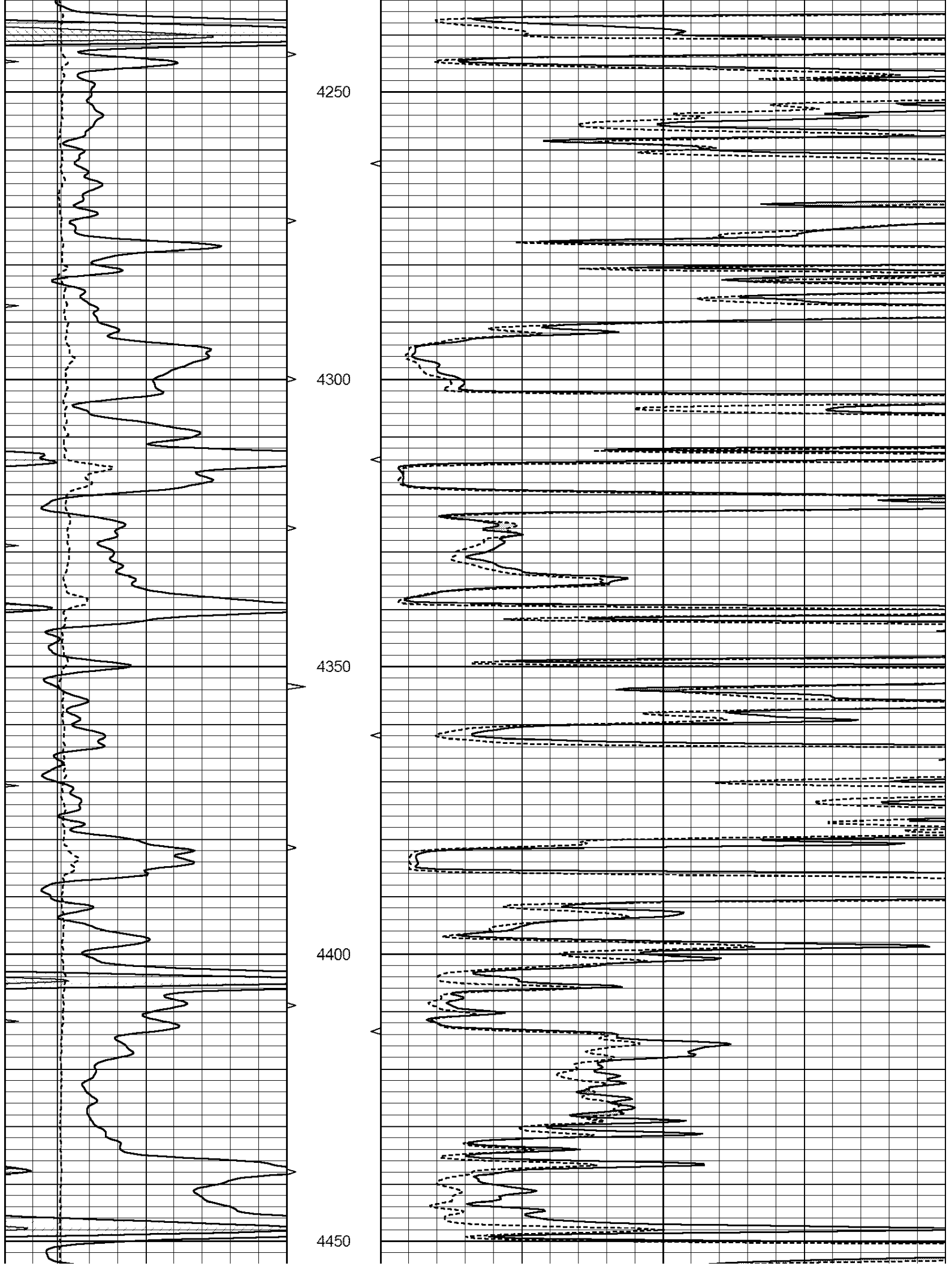
3700

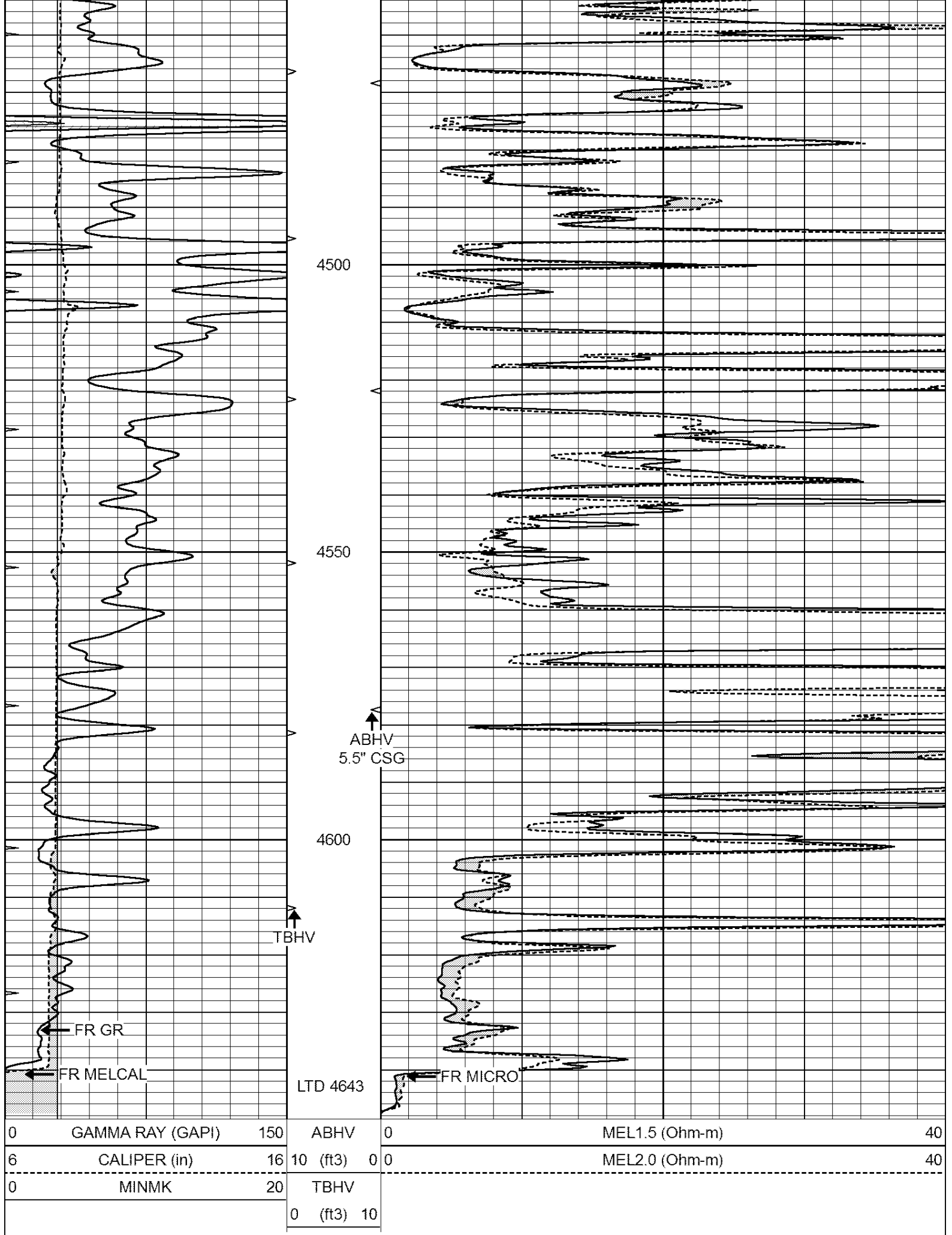
3750











4500

4550

4600

ABHV
5.5" CSG

TBHV

LTD 4643

FR GR

FR MELCAL

FR MICRO

0 GAMMA RAY (GAPI) 150

6 CALIPER (in) 16

0 MINMK 20

ABHV

10 (ft3) 0

TBHV

0 (ft3) 10

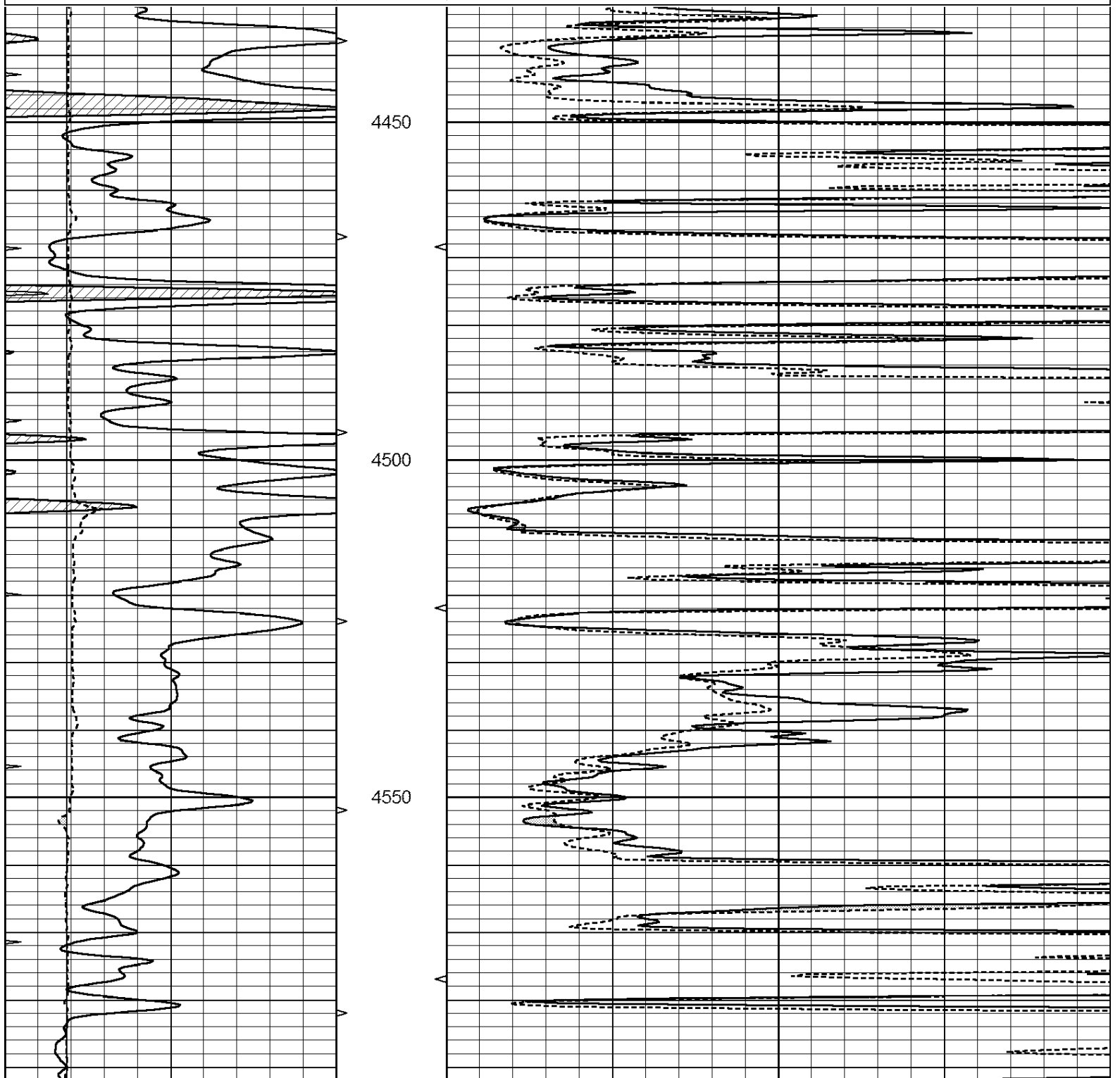
0 MEL1.5 (Ohm-m) 40

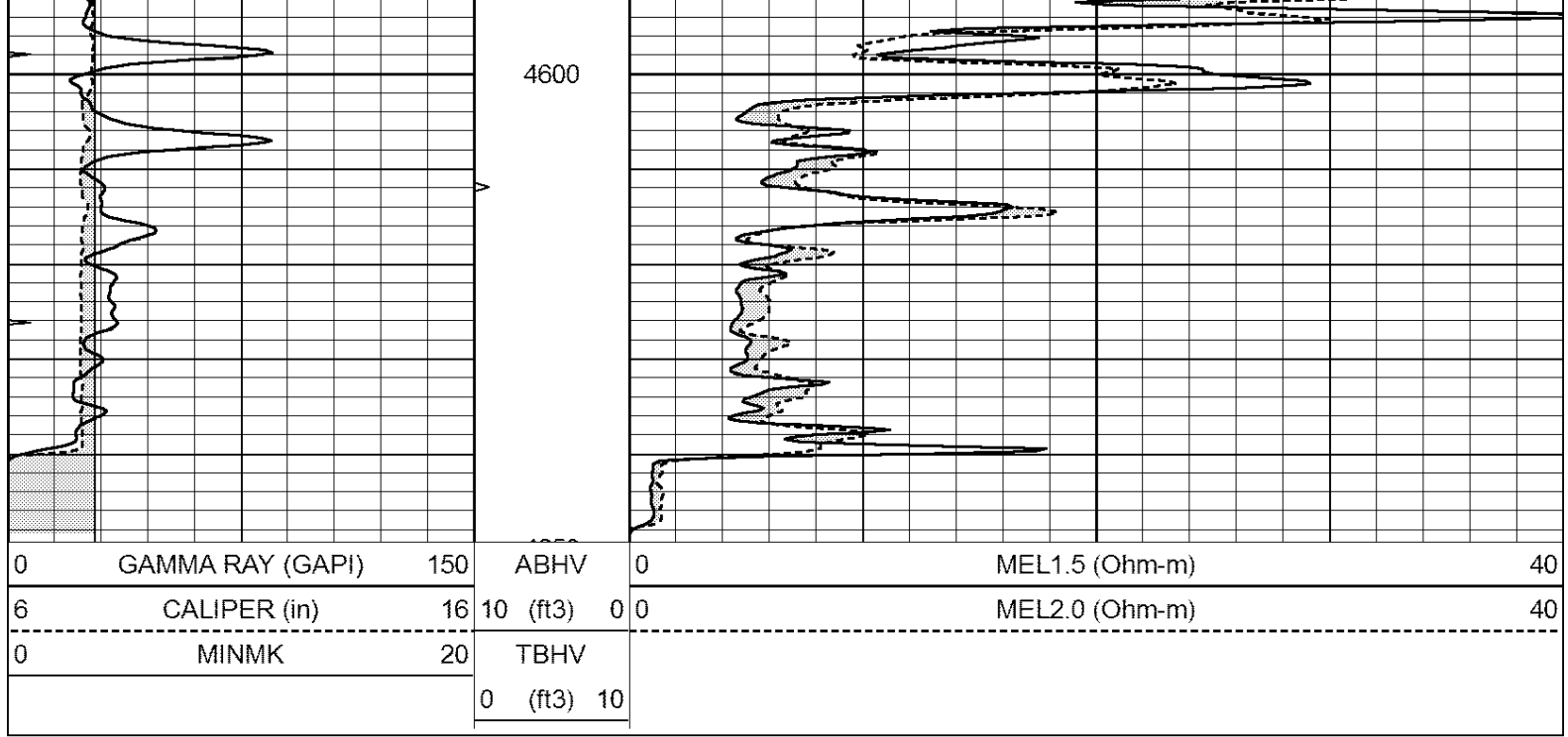
0 MEL2.0 (Ohm-m) 40

MAIN SECTION

Database File: 26527ddn.db
 Dataset Pathname: pass5.1
 Presentation Format: _micro
 Dataset Creation: Fri Jan 16 07:25:31 2015 by Calc Open-Cased 090629
 Charted by: Depth in Feet scaled 1:240

0	GAMMA RAY (GAPI)	150	ABHV	0	MEL1.5 (Ohm-m)	40
6	CALIPER (in)	16	10 (ft3)	0	MEL2.0 (Ohm-m)	40
0	MINMK	20	TBHV			
			0 (ft3)	10		





Calibration Report

Database File: 26527ddn.db
 Dataset Pathname: pass5.1
 Dataset Creation: Fri Jan 16 07:25:31 2015 by Calc Open-Cased 090629

MICRO Calibration Report

Serial Number:	MICRO3	
Tool Model:	PROBE	
Performed:	Thu Nov 17 03:06:31 2011	
Caliper Calibration:	Gain=3.916	Offset=-9.671
References	Low Cal	High Cal
Readings	8.000	14.000
	4.257	5.789
1.5" Calibration:	Gain=100.000	Offset=0.000
References	Low Cal	High Cal
Readings	0.000	20.000
	0.004	0.228
2" Calibration:	Gain=150.553	Offset=-1.220
References	Low Cal	High Cal
Readings	0.000	20.000
	0.005	0.175

Gamma Ray Calibration Report

Serial Number:	GR6	
Tool Model:	OPEN	
Performed:	Wed Dec 10 11:09:24 2014	
Calibrator Value:	150.0	GAPI
Background Reading:	0.0	cps
Calibrator Reading:	276.0	cps
Sensitivity:	0.8000	GAPI/cps