



Pioneer Energy Services

Microresistivity Log

15-055-22381-00-00

API No.

Company **American Warrior, Inc.**

Well **O'Brate-Finney #4-5**

Field **Unknown**

County **Finney** State **Kansas**

Location **2262' FSL & 941' FWL**

Sec: **5** Twp: **23S** Rge: **32W**

Permanent Datum **Ground Level** Elevation **2851**

Log Measured From **Kelly Bushing** 11 Ft. Above Perm. Datum

Drilling Measured From **Kelly Bushing**

Other Services
CNL/CDL
DIL

Elevation
K.B. 2862
D.F. 2851
G.L. 2851

Date	1/19/15
Run Number	Two
Depth Driller	4900
Depth Logger	4902
Bottom Logged Interval	4901
Top Log Interval	3750
Casing Driller	8.625 @ 1657
Casing Logger	1658
Bit Size	7.875
Type Fluid in Hole	Chemical
Salinity, ppm CL	3800
Density / Viscosity	9.75 54
pH / Fluid Loss	8.5 10.0
Source of Sample	Flowline
Rm @ Meas. Temp	0.50 @ 62
Rmf @ Meas. Temp	0.38 @ 62
Rmc @ Meas. Temp	0.68 @ 62
Source of Rmf / Rmc	Charts
Rm @ BHT	0.25 @ 125
Operating Rig Time	4 Hours
Max Rec. Temp. F	125
Equipment Number	15
Location	Hays
Recorded By	D.Kerr
Witnessed By	Kevin Timson

<<< Fold Here >>>

All interpretations are opinions based on inferences from electrical or other measurements and we cannot and do not guarantee the accuracy or correctness of any interpretation, and we shall not, except in the case of gross or willful negligence on our part, be liable or responsible for any loss, costs, damages, or expenses incurred or sustained by anyone resulting from any interpretation made by any of our officers, agents or employees. These interpretations are also subject to our general terms and conditions set out in our current Price Schedule.

Comments

Thank you for using Log-Tech, Inc.
(785) 625-3858

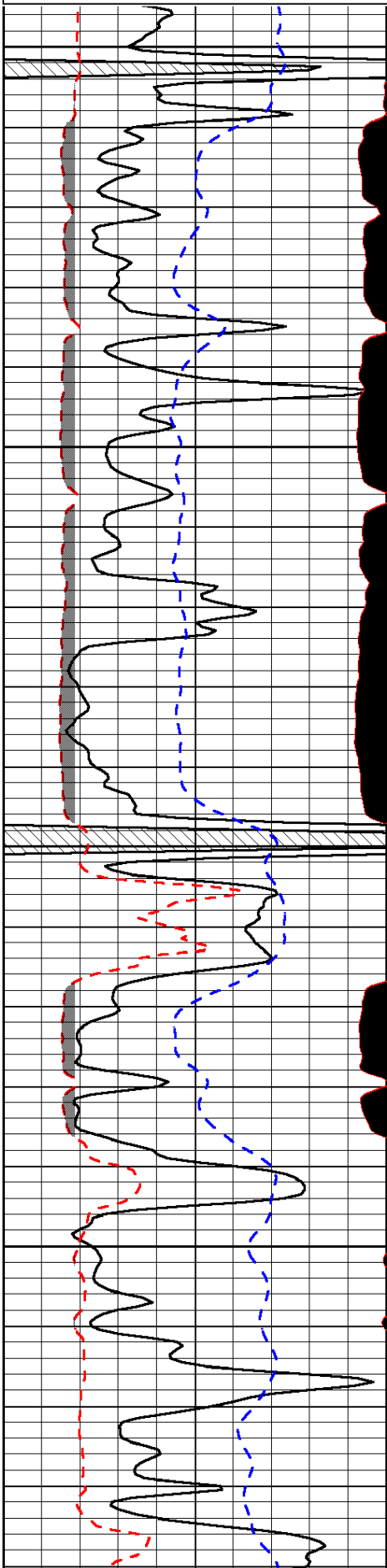
Garden City, KS 5 N to Six Mile Rd.
1 E, 3/4 N, E into

Database File: amwarrior_obratefinney_4_5hd.db
 Dataset Pathname: DIL/awstk
 Presentation Format: micro
 Dataset Creation: Mon Jan 19 09:09:04 2015
 Charted by: Depth in Feet scaled 1:240

0	Gamma Ray	150
6	MCAL (GAPI)	16
2.875	Mud Cake (GAPI)	7.875
-200	SP (mV)	0

0	Micro Inverse 1 X 1	40
0	Micro Normal 2"	40
10000	Line Weight	0

LSPD

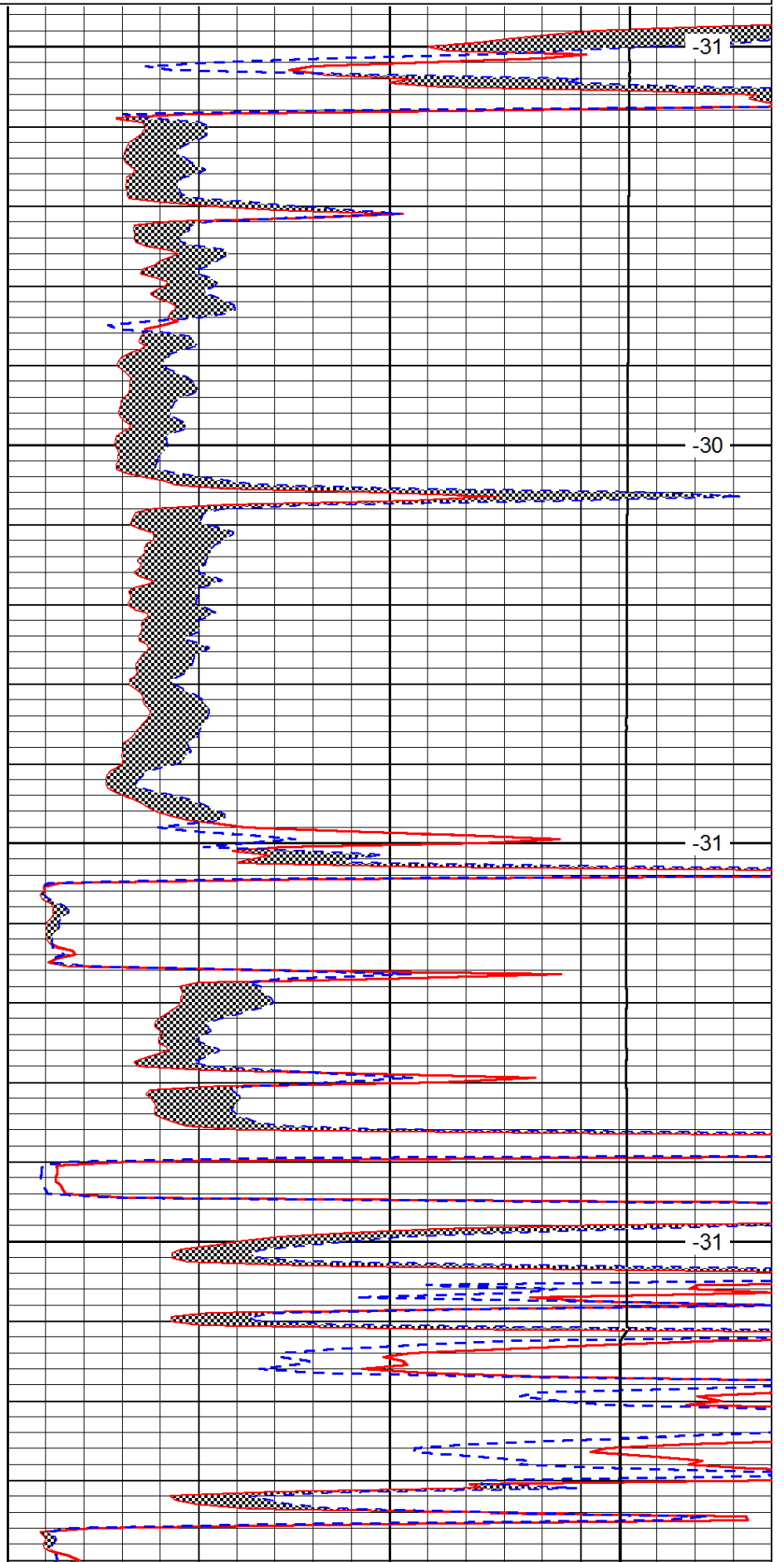


3750

3800

3850

3900

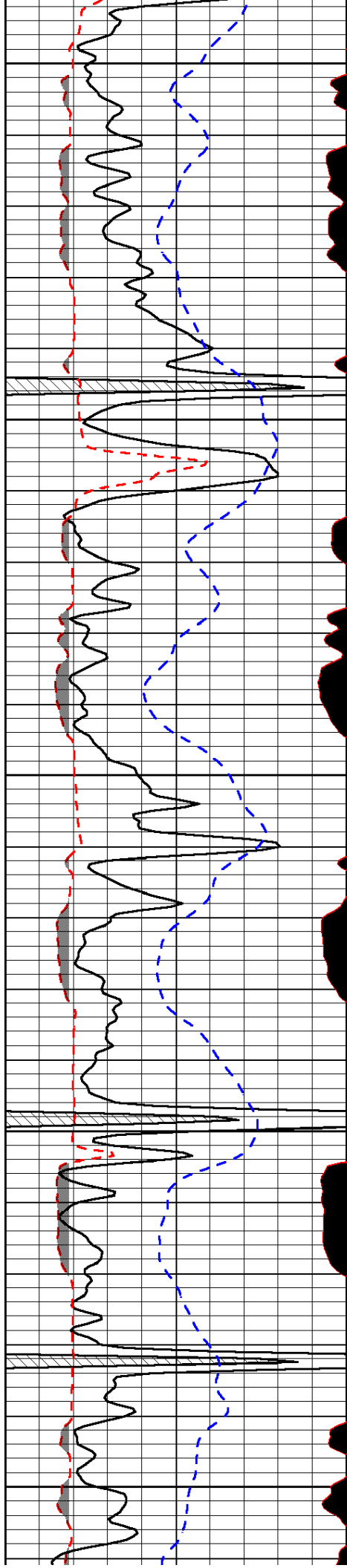


-31

-30

-31

-31



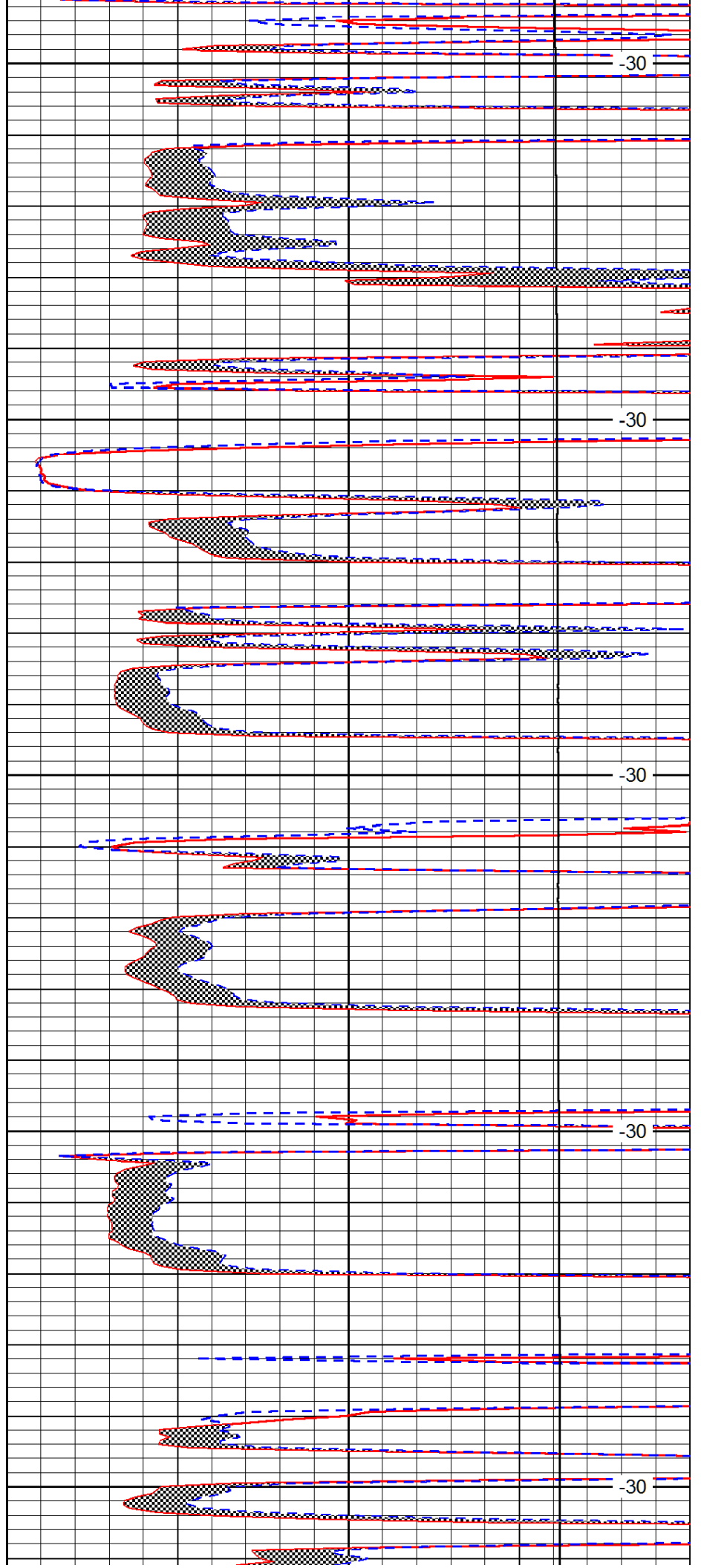
3950

4000

4050

4100

4150



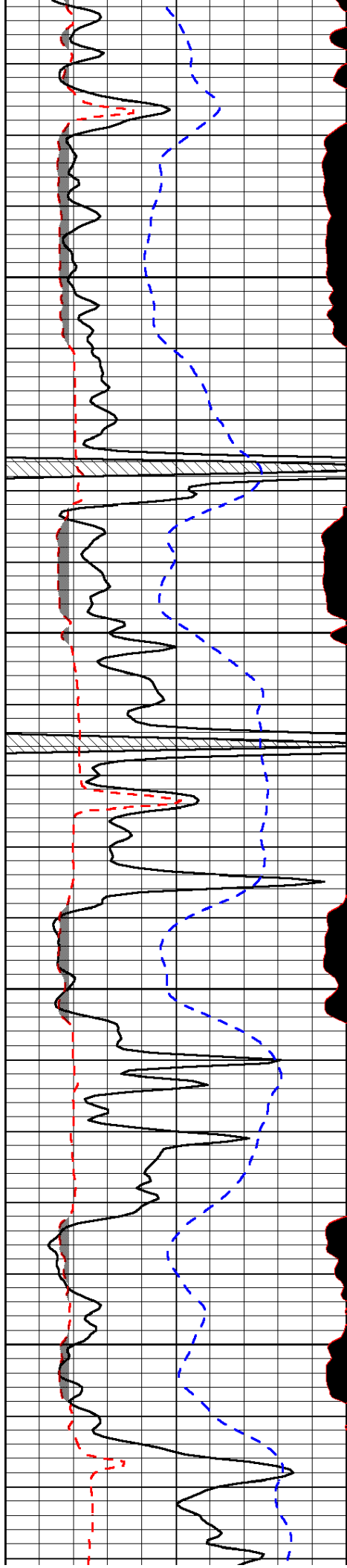
-30

-30

-30

-30

-30

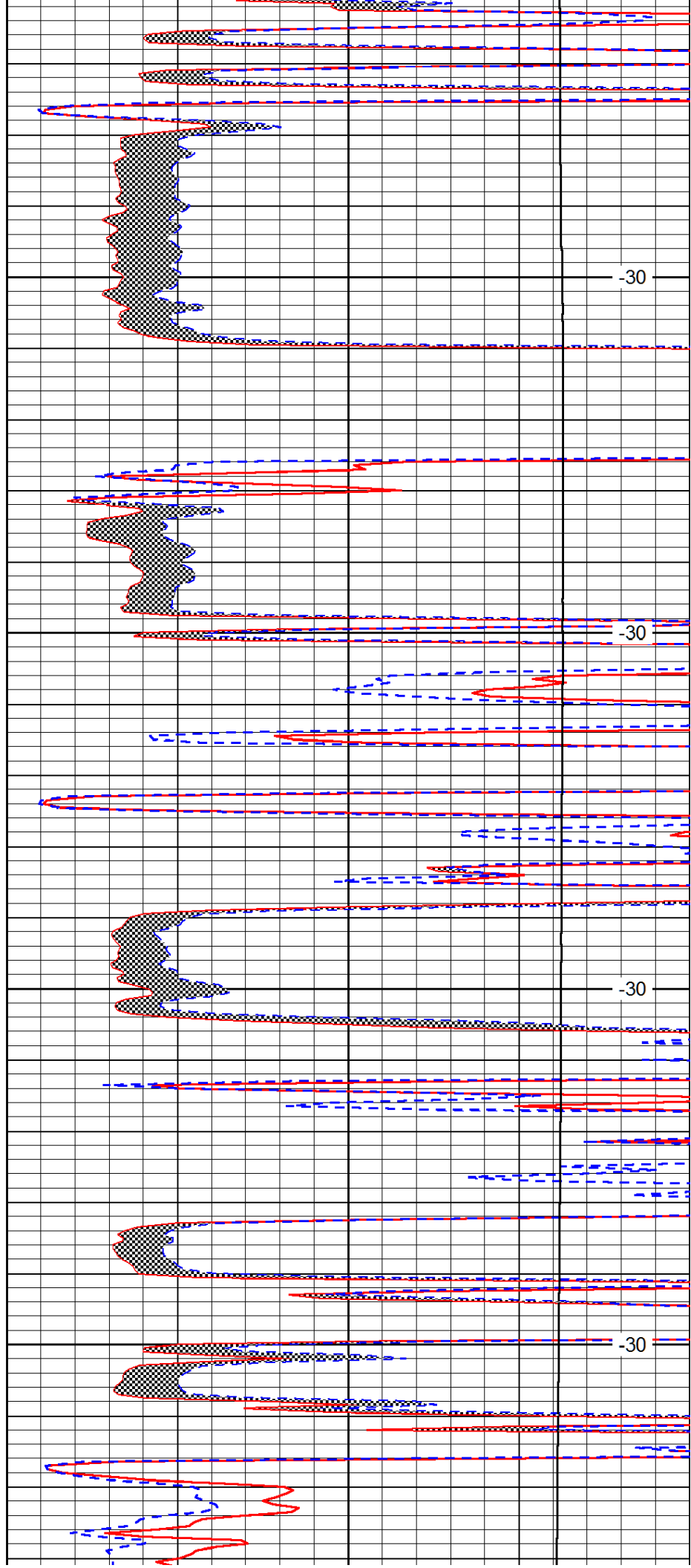


4200

4250

3300

4350

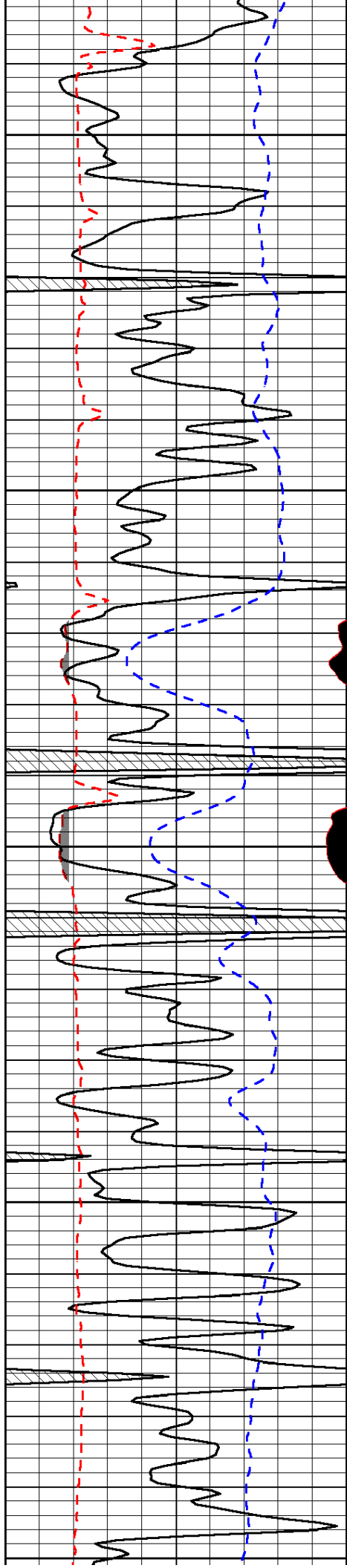


-30

-30

-30

-30



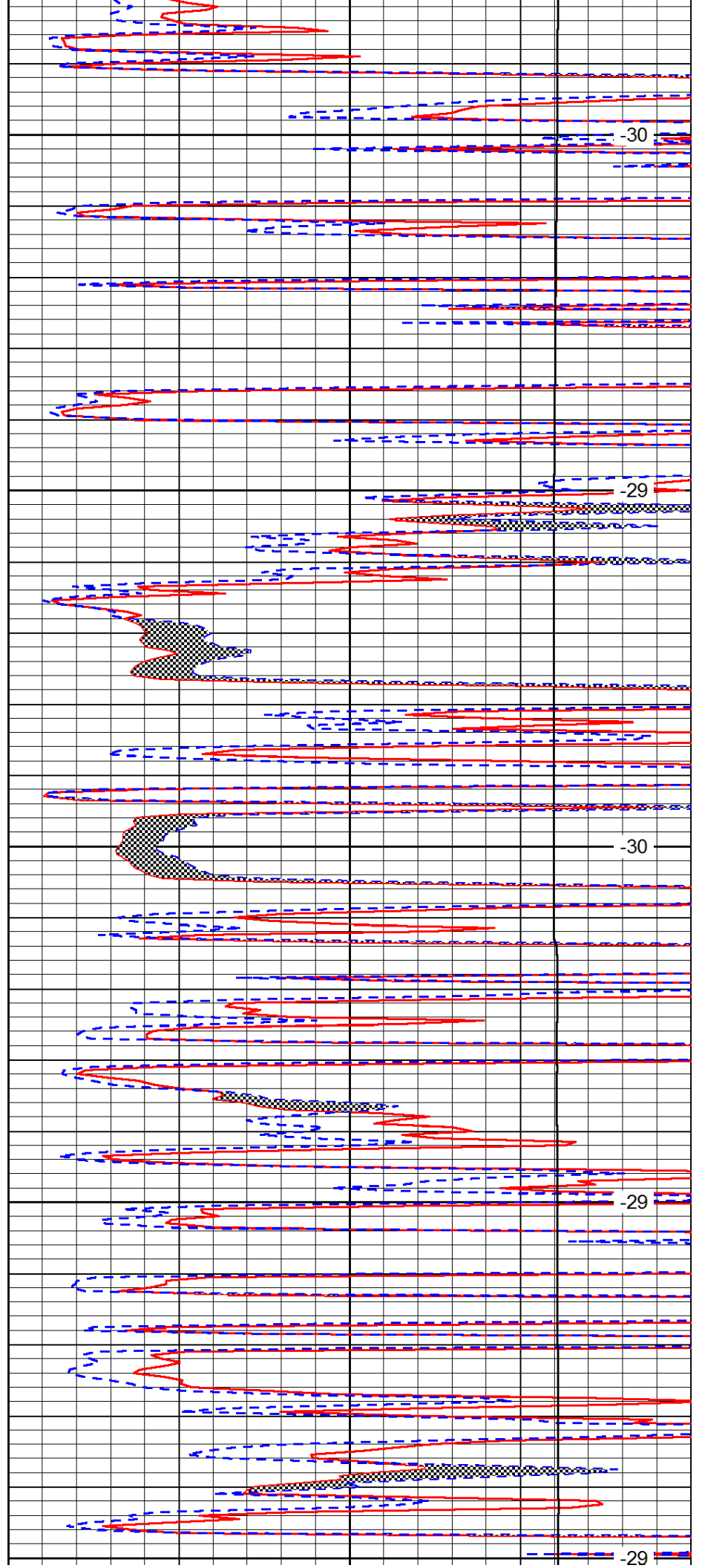
4400

4450

4500

4550

4600



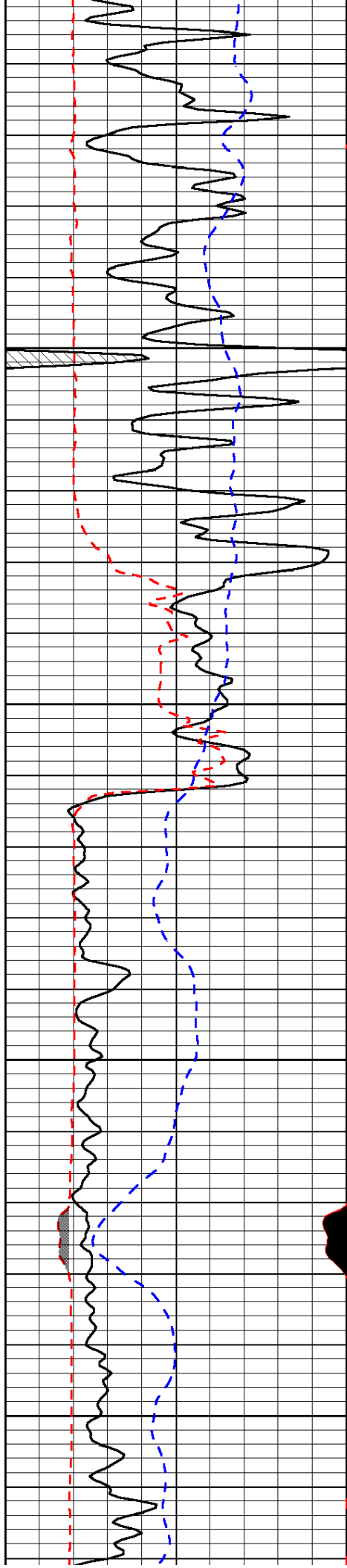
-30

-29

-30

-29

-29

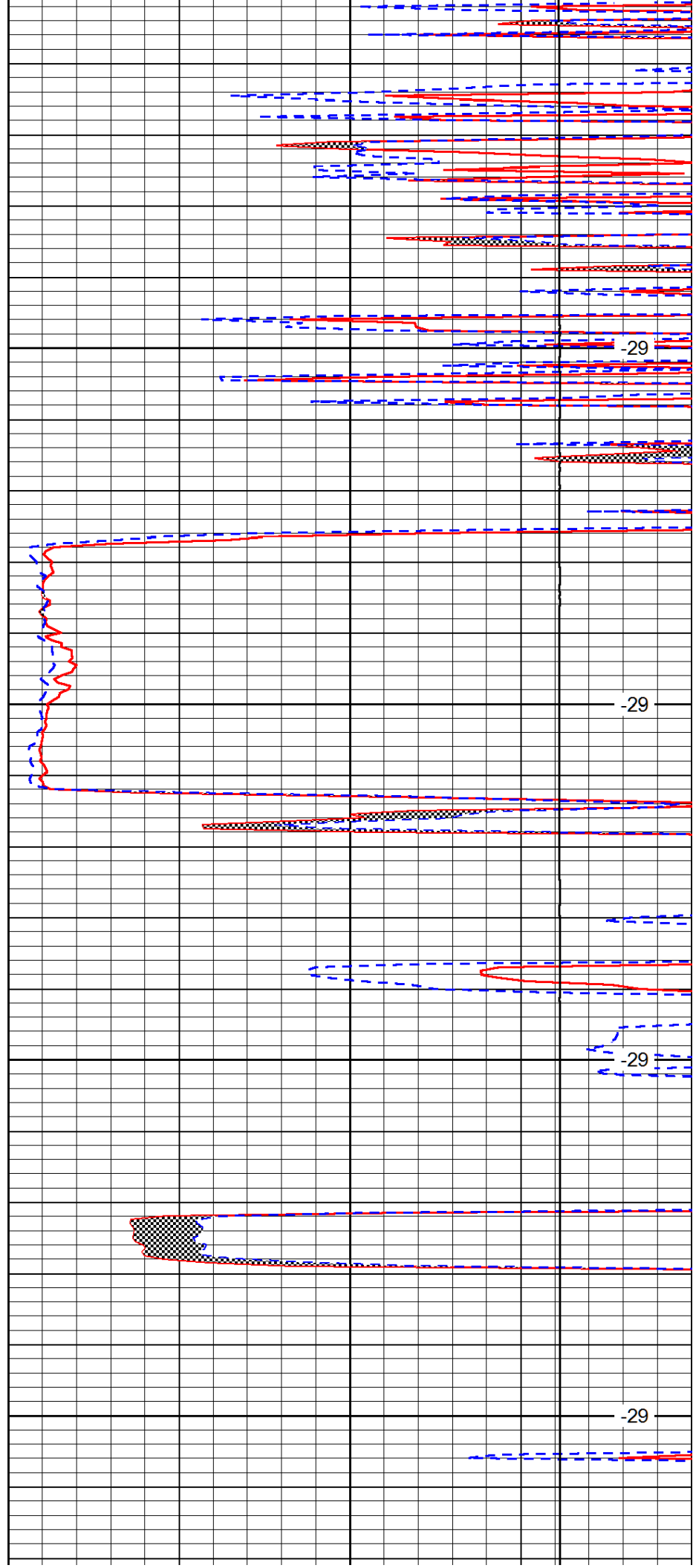


4650

4700

4750

4800

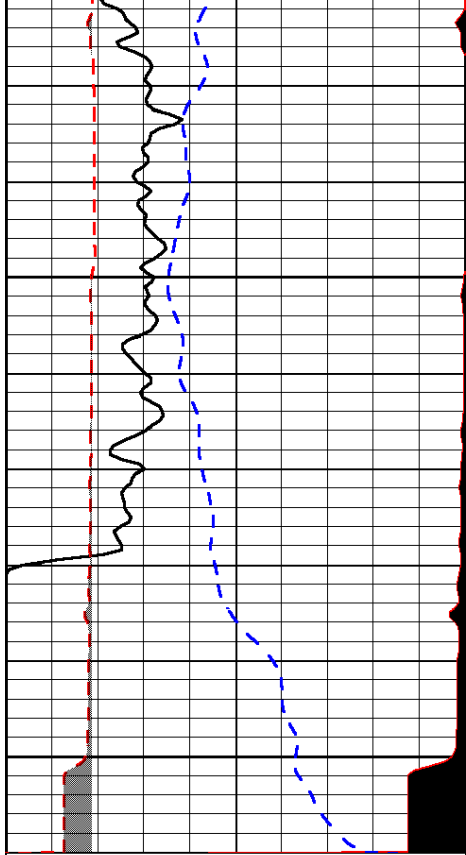


-29

-29

-29

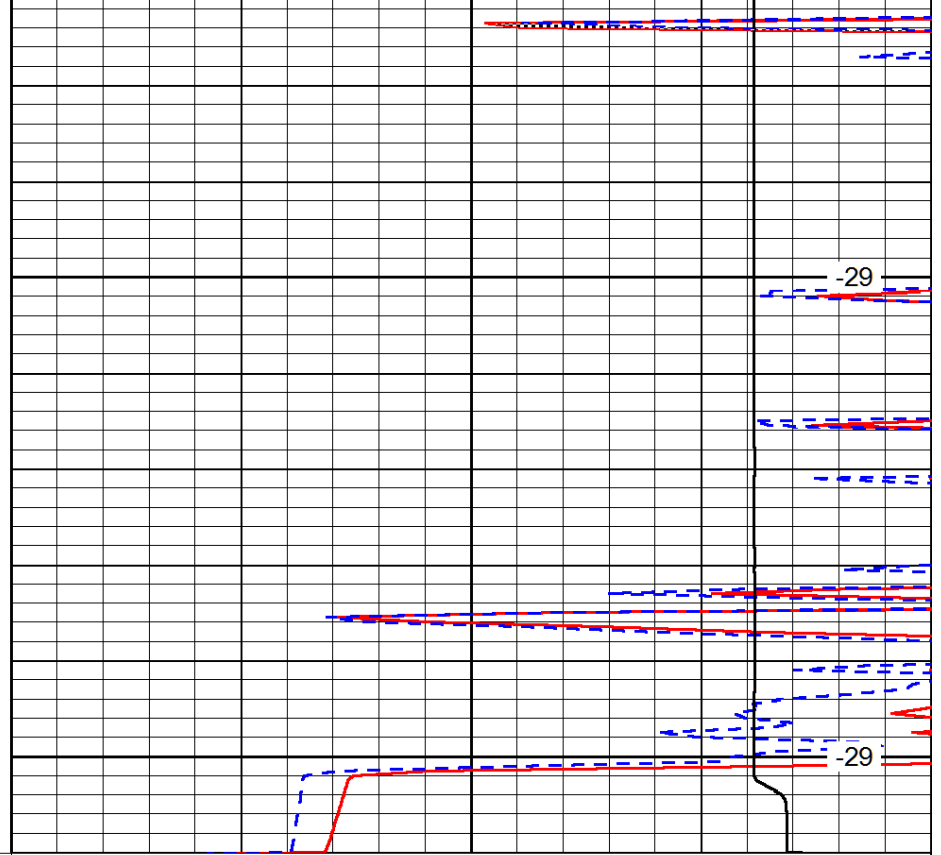
-29



0	Gamma Ray	150
6	MCAL (GAPI)	16
2.875	Mud Cake (GAPI)	7.875
-200	SP (mV)	0

4850

4900



0	Micro Inverse 1 X 1	40
0	Micro Normal 2"	40
10000	Line Weight	0

LSPD