



Pioneer Energy Services

Dual Induction Log

15-035-24,611-00-00

API No.

Company **Toto Energy, LLC**
 Well **Call Me Maybe #2**
 Field **Maddix North**
 County **Cowley** State **Kansas**

Location **330' FNL & 1420' FWL**

Other Services
 CNL/CDL
 MEL

Permanent Datum **Ground Level** Elevation **1273**
 Log Measured From **Kelly Bushing** 10 Ft. Above Perm. Datum
 Drilling Measured From **Kelly Bushing**

Elevation
 K.B. 1283
 D.F. 1273
 G.L. 1273

Date	10/18/2014
Run Number	One
Depth Driller	3450
Depth Logger	3449
Bottom Logged Interval	3448
Top Log Interval	250
Casing Driller	8.625 @ 255
Casing Logger	251
Bit Size	7.875
Type Fluid in Hole	Chemical
Salinity, ppm CL	1.000
Density / Viscosity	9.6 54
pH / Fluid Loss	9.0 8.0
Source of Sample	Flowline
Rm @ Meas. Temp	1.25 @ 74
Rmf @ Meas. Temp	.94 @ 74
Rmc @ Meas. Temp	1.69 @ 74
Source of Rmf / Rmc	Charts
Rm @ BHT	.84 @ 110
Operating Rig Time	4 Hours
Max Rec. Temp. F	110
Equipment Number	10
Location	Hays
Recorded By	C. Desaire
Witnessed By	Steve Ball

<<< Fold Here >>>

All interpretations are opinions based on inferences from electrical or other measurements and we cannot and do not guarantee the accuracy or correctness of any interpretation, and we shall not, except in the case of gross or willful negligence on our part, be liable or responsible for any loss, costs, damages, or expenses incurred or sustained by anyone resulting from any interpretation made by any of our officers, agents or employees. These interpretations are also subject to our general terms and conditions set out in our current Price Schedule.

Comments

Thank you for using Pioneer Energy Services
www.pioneeres.com
 785 625 3858

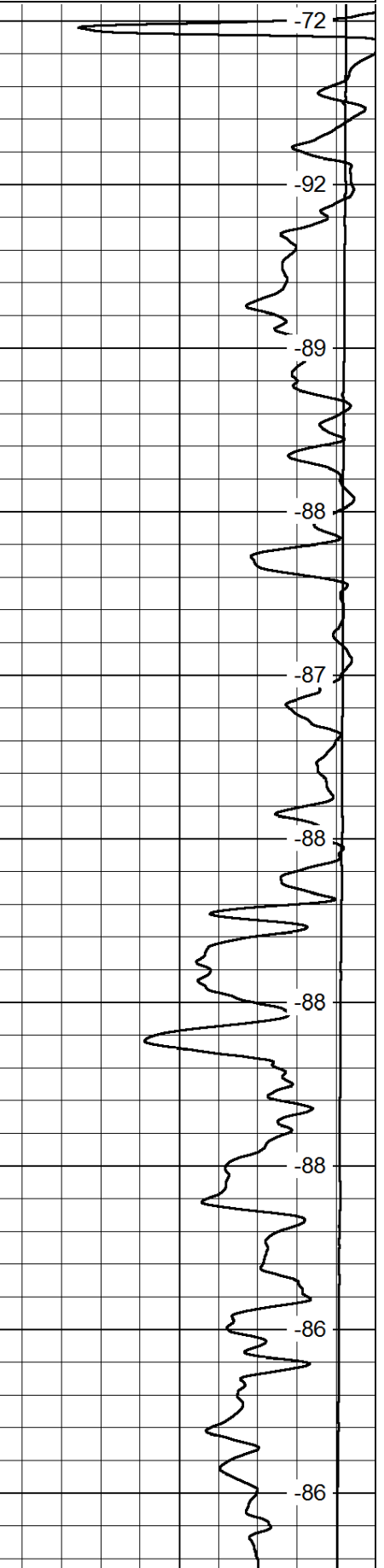
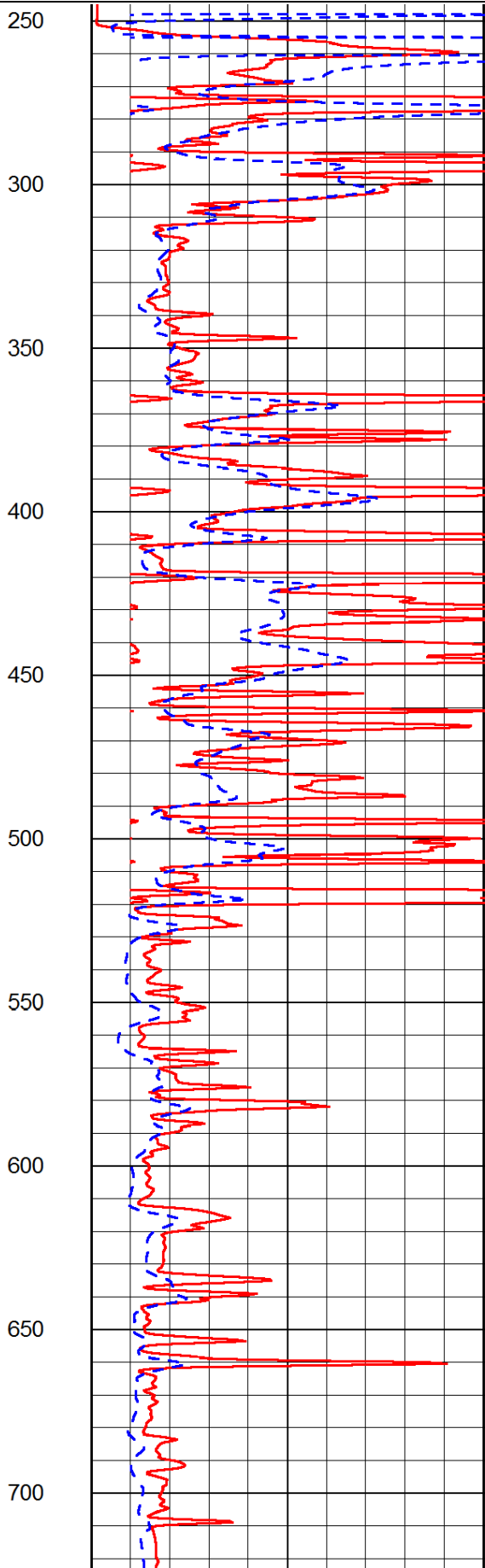
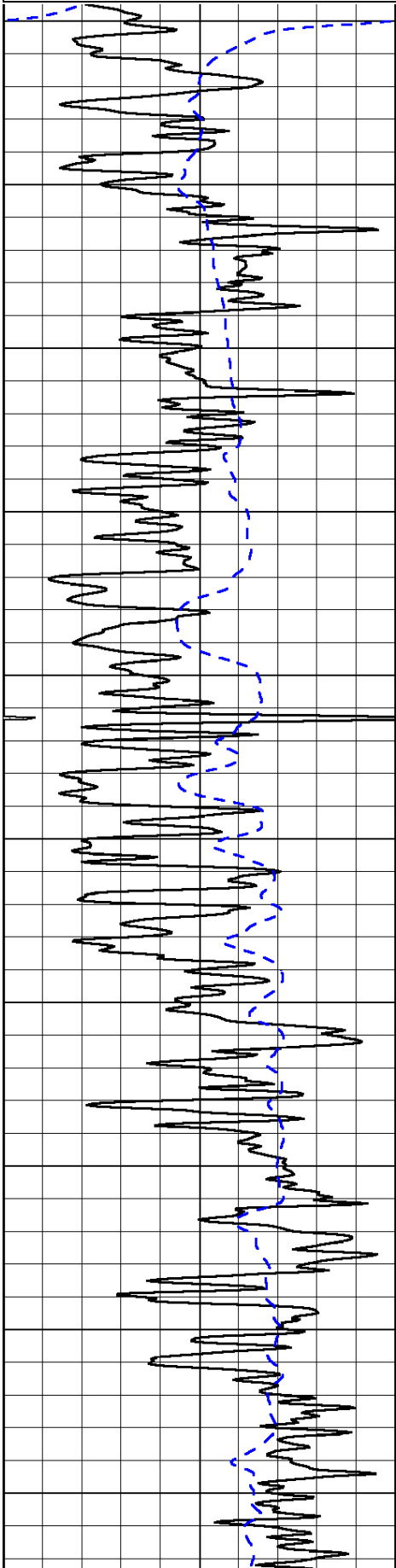
Winfield KS, 7 E, 1 S, S & E thru gate

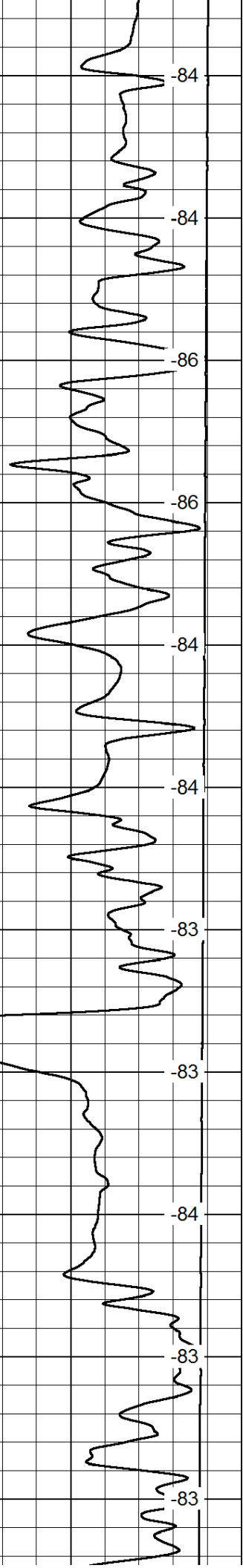
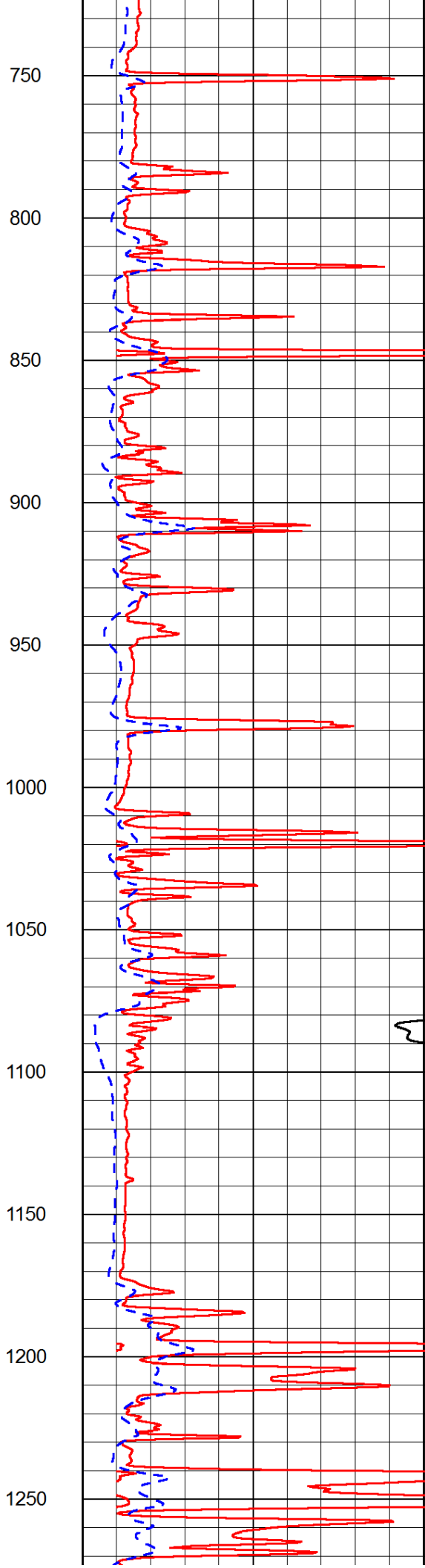
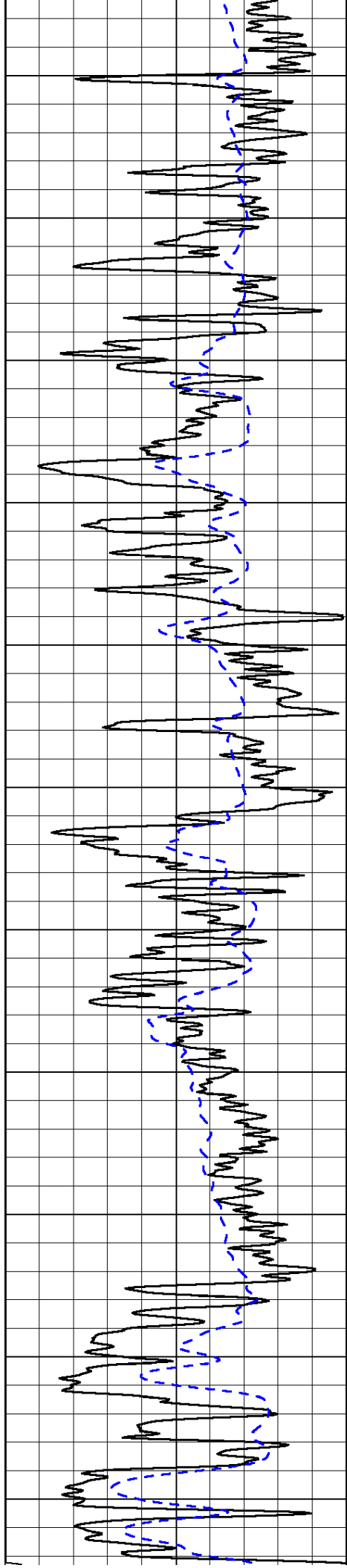
Database File: c:\warrior\data\toto_call me maybe #2\totohd.db
 Dataset Pathname: dil/totostk
 Presentation Format: dil2in
 Dataset Creation: Sat Oct 18 15:00:50 2014
 Charted by: Depth in Feet scaled 1:600

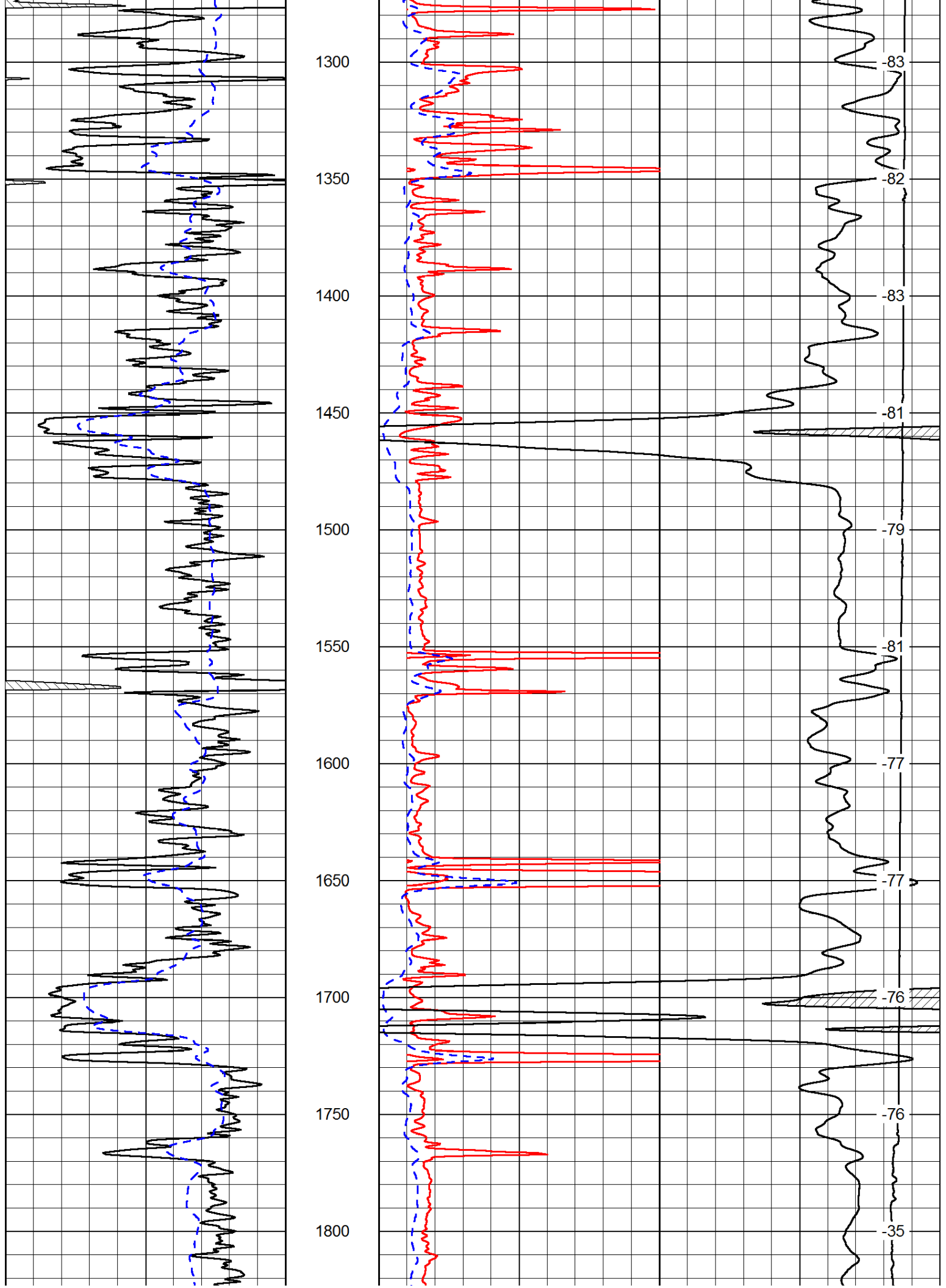
0 Gamma Ray 150
-200 SP (mV) 0

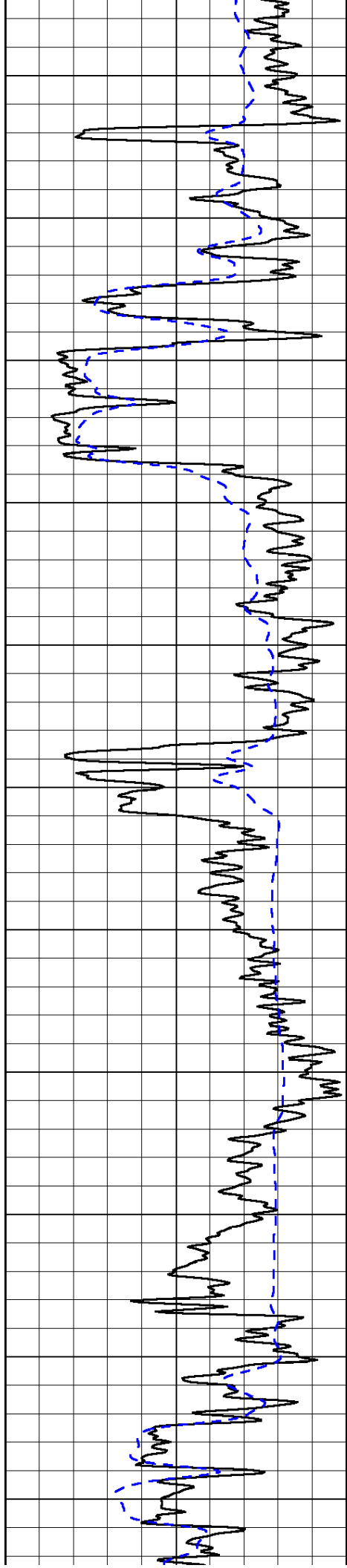
0 Shallow Resistivity 50
0 Deep Resistivity 50
1000 Conductivity 0
15000 Line Tension 0
50 Shallow Resistivity 500
50 Deep Resistivity 500

LSPD









1850

1900

1950

2000

2050

2100

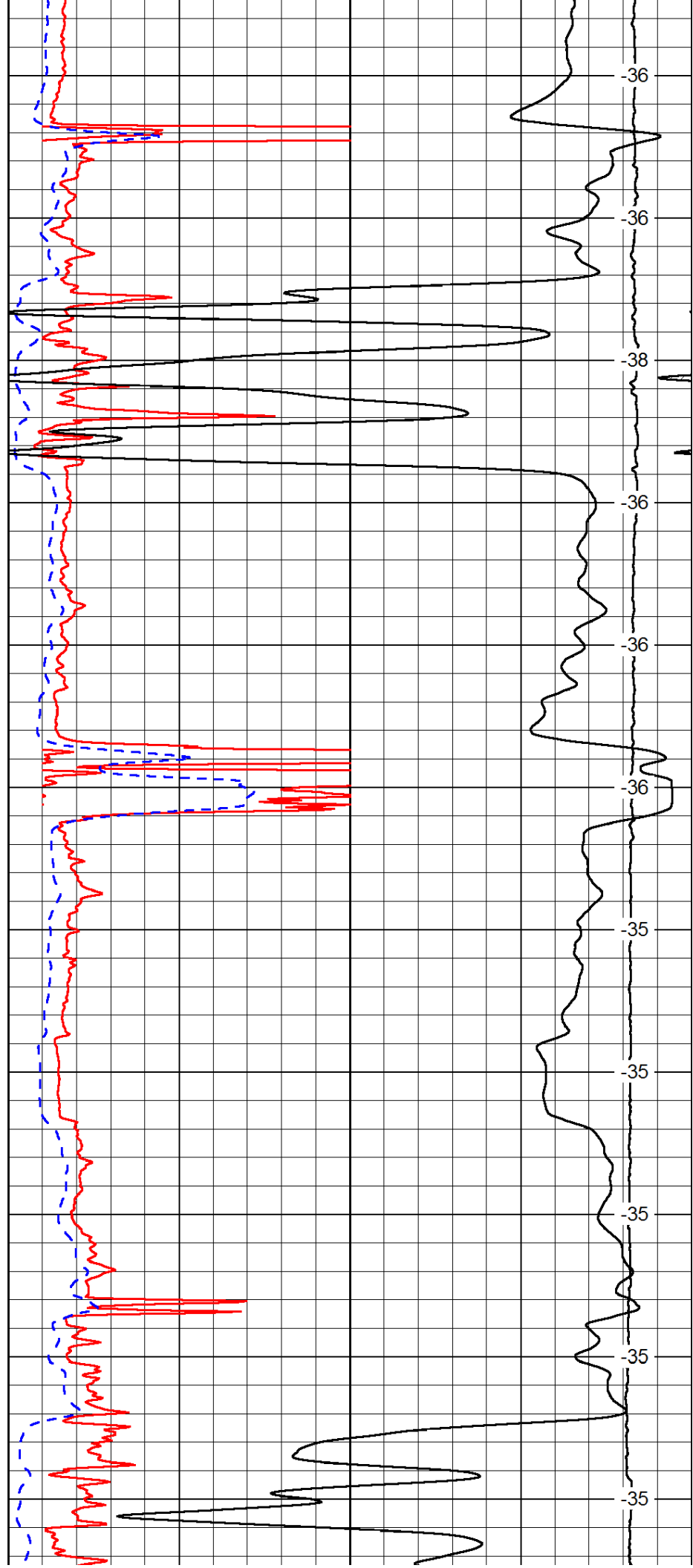
2150

2200

2250

2300

2350



-36

-36

-38

-36

-36

-36

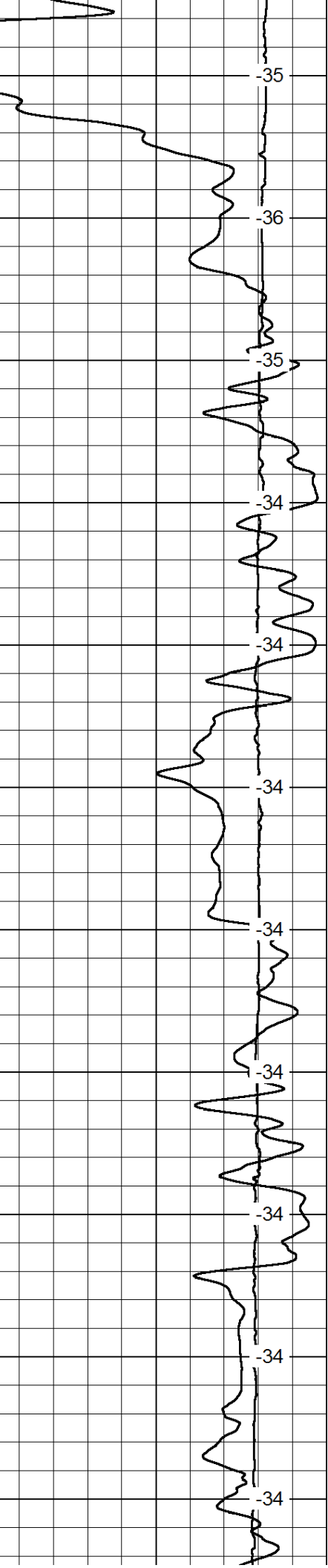
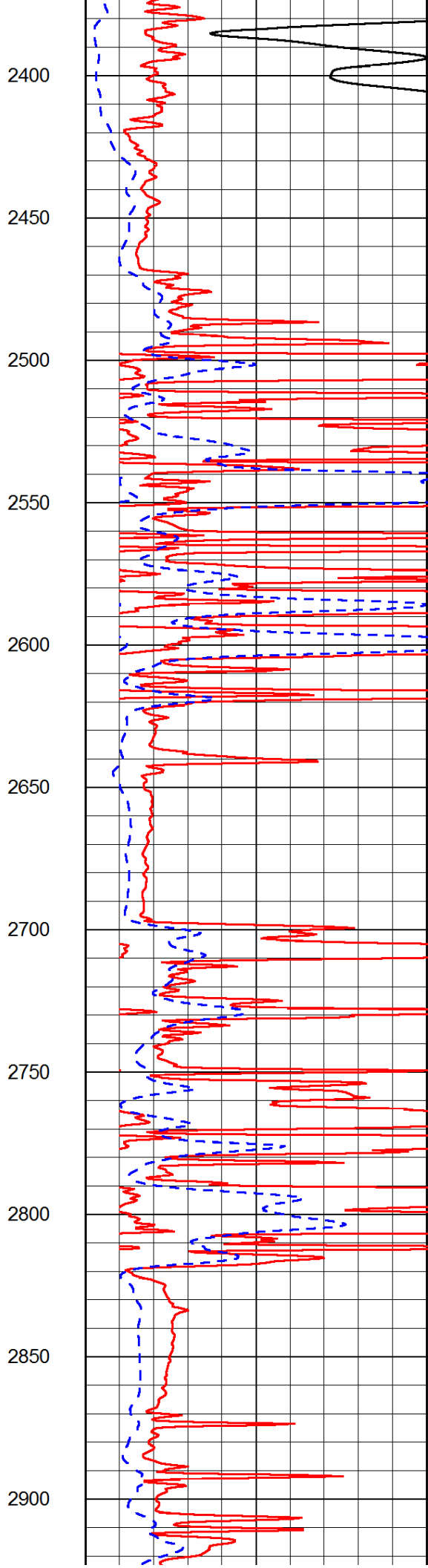
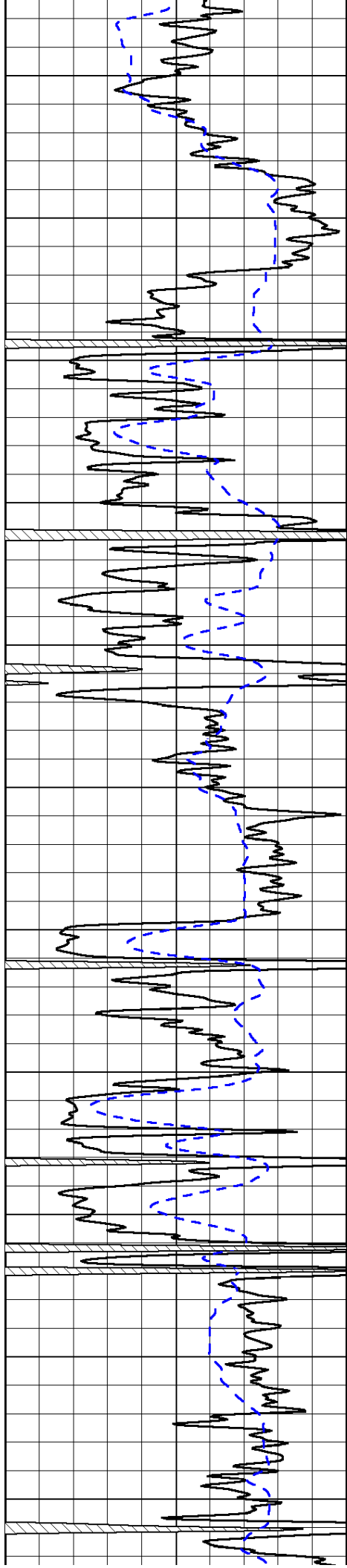
-35

-35

-35

-35

-35



2400

2450

2500

2550

2600

2650

2700

2750

2800

2850

2900

-35

-36

-35

-34

-34

-34

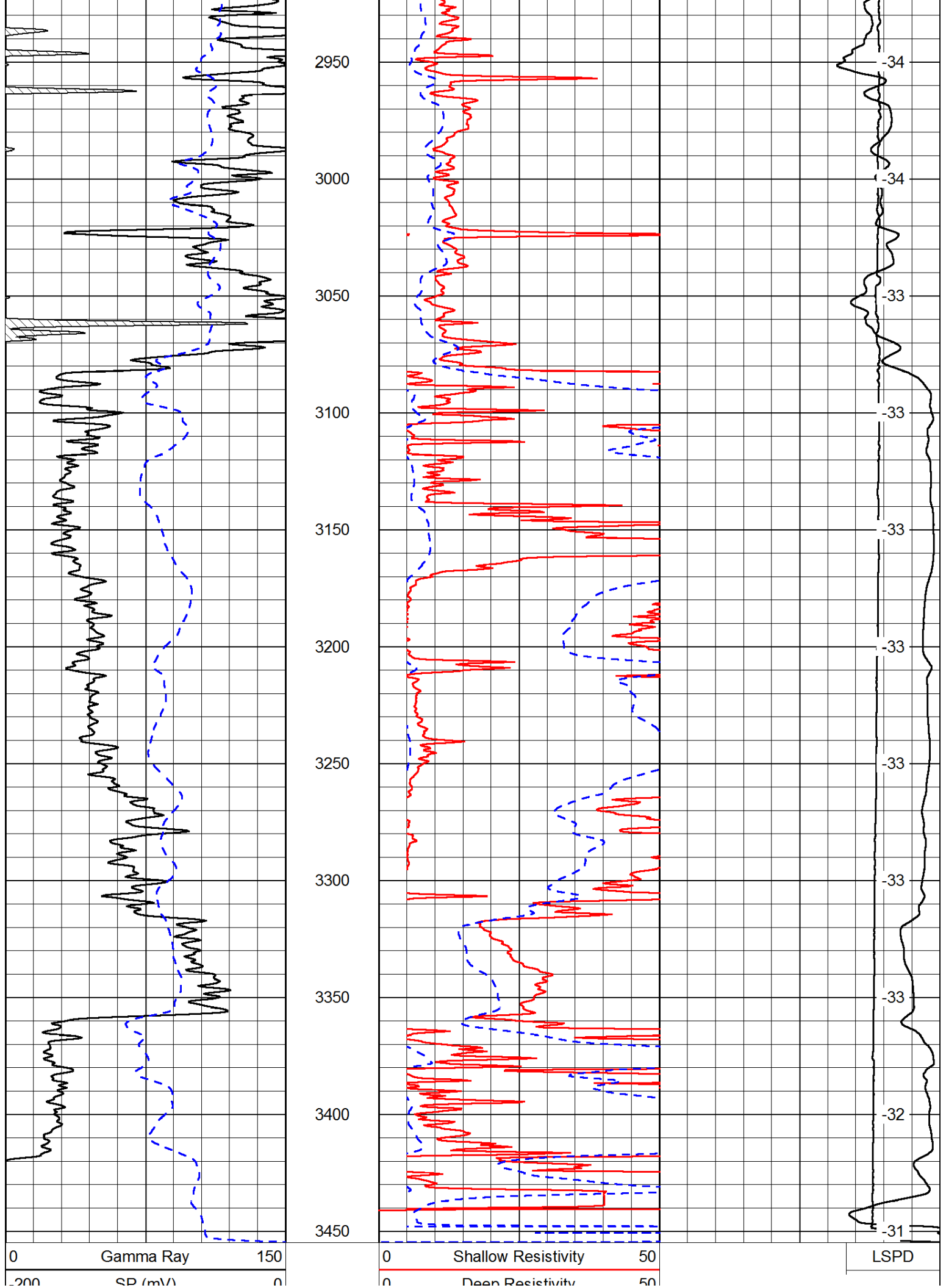
-34

-34

-34

-34

-34



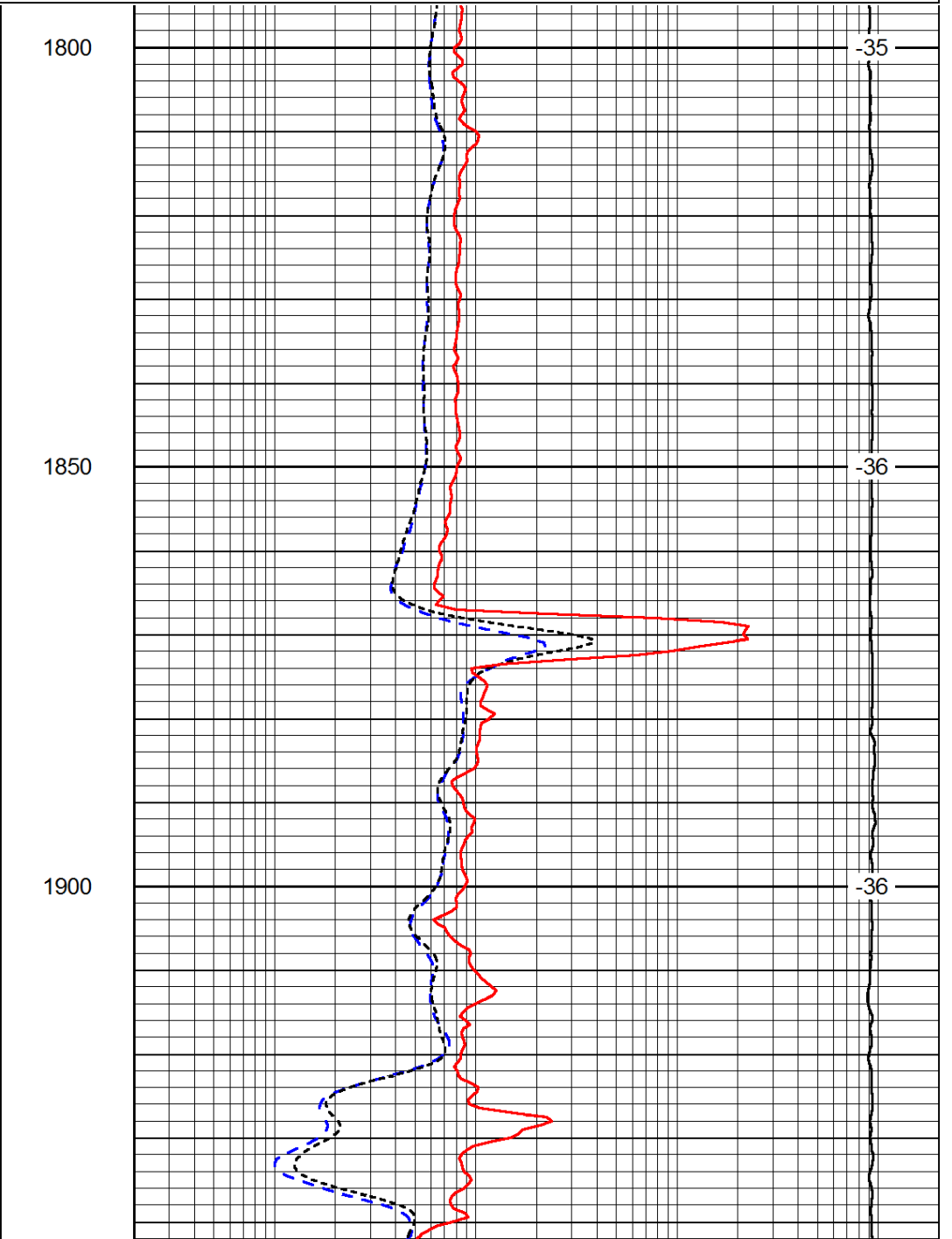
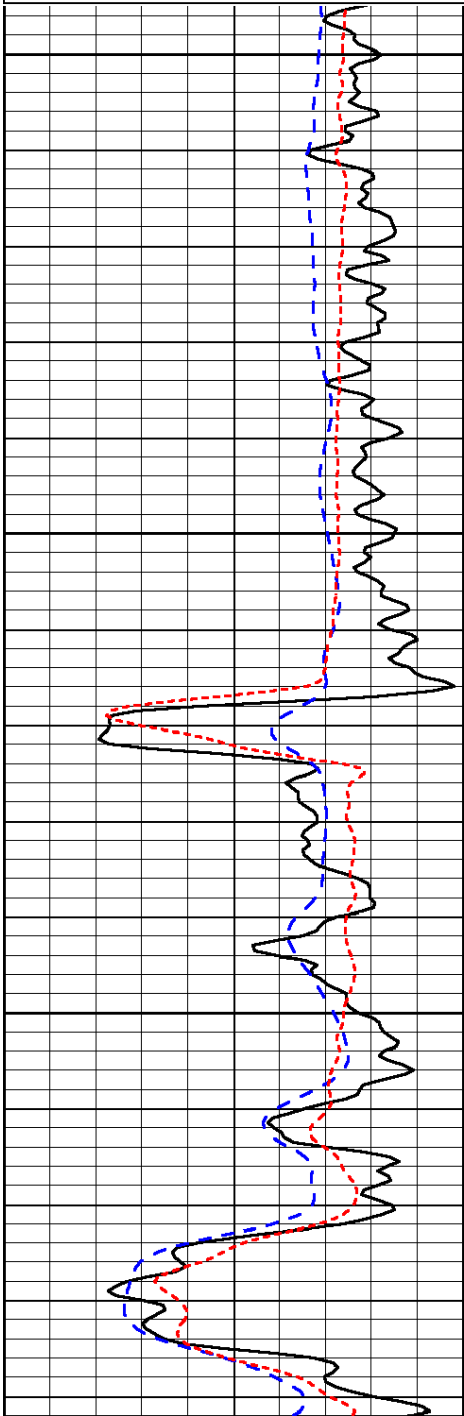
200	SP (mV)	0
1000	Conductivity	0
15000	Line Tension	0
50	Shallow Resistivity	500
50	Deep Resistivity	500

0.2	Deep Resistivity	2000
0.2	Medium Resistivity	2000
0.2	Shallow Resistivity	2000
15000	Line Tension	0

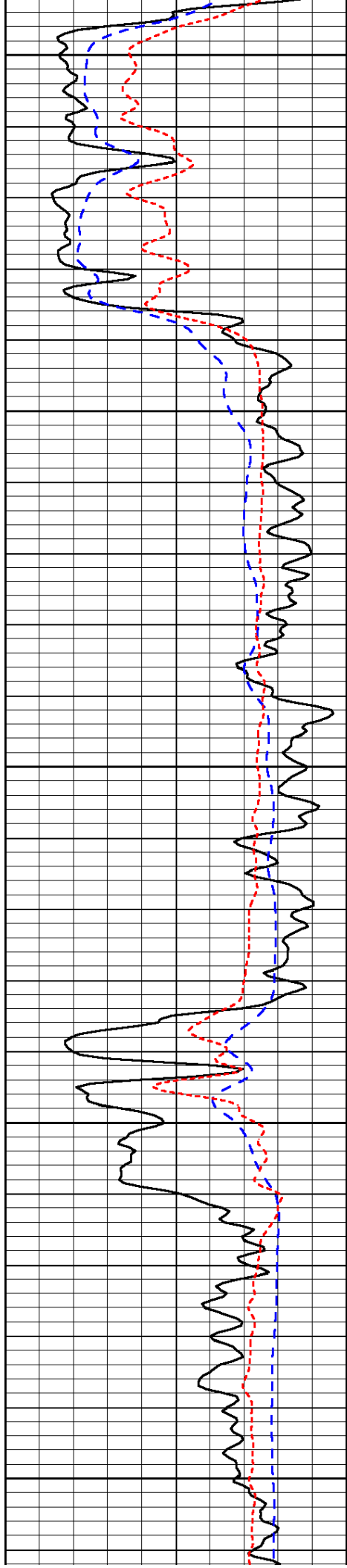
Database File: c:\warrior\data\toto_call me maybe #2\totohd.db
 Dataset Pathname: dil/totostk
 Presentation Format: dil
 Dataset Creation: Sat Oct 18 15:00:50 2014
 Charted by: Depth in Feet scaled 1:240

0	Gamma Ray	150
-200	SP (mV)	0
-160	RxoRt	40

0.2	Deep Resistivity	2000
0.2	Medium Resistivity	2000
0.2	Shallow Resistivity	2000
15000	Line Tension	0



LSPD



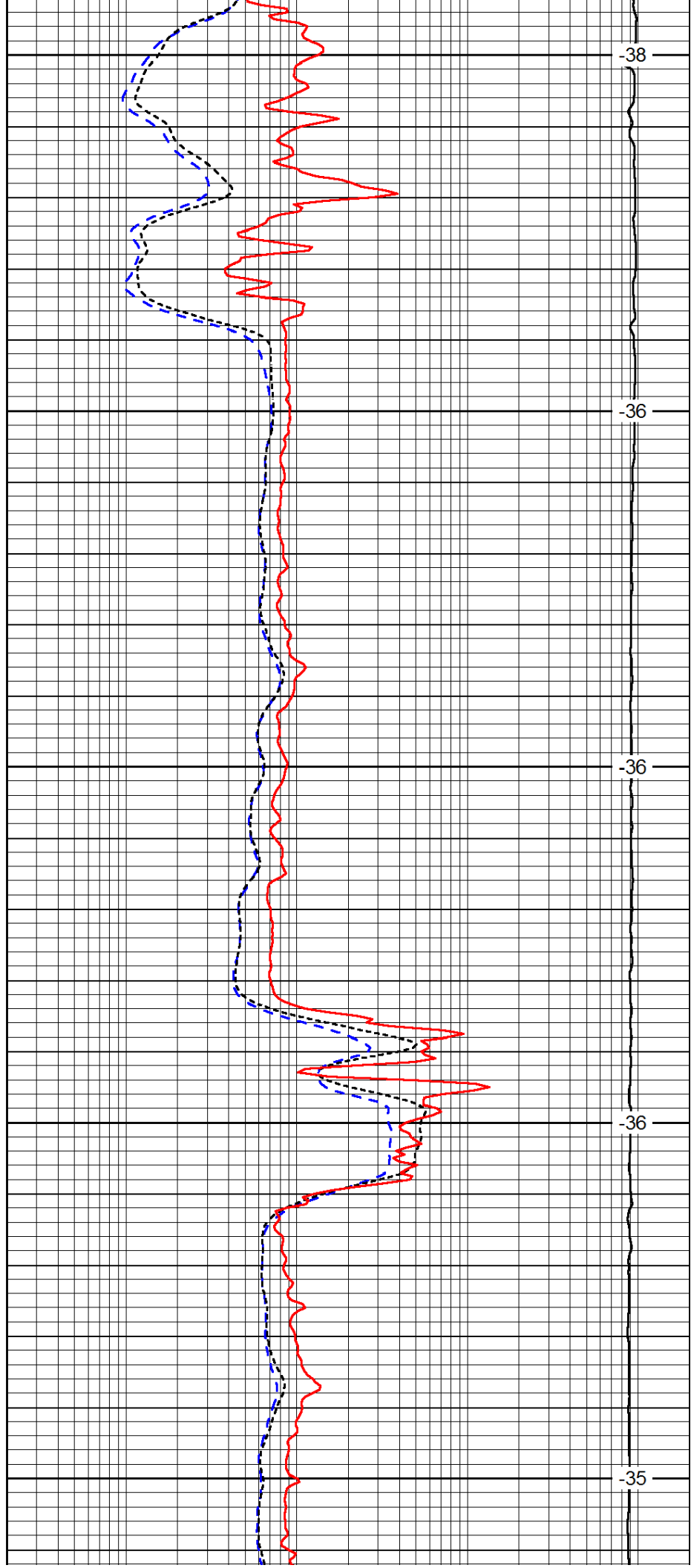
1950

2000

2050

2100

2150



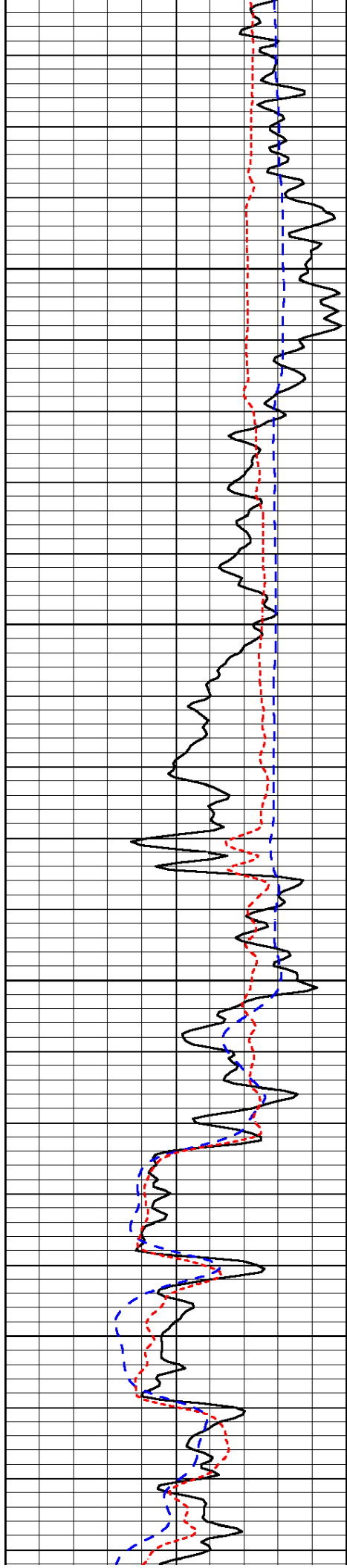
-38

-36

-36

-36

-35

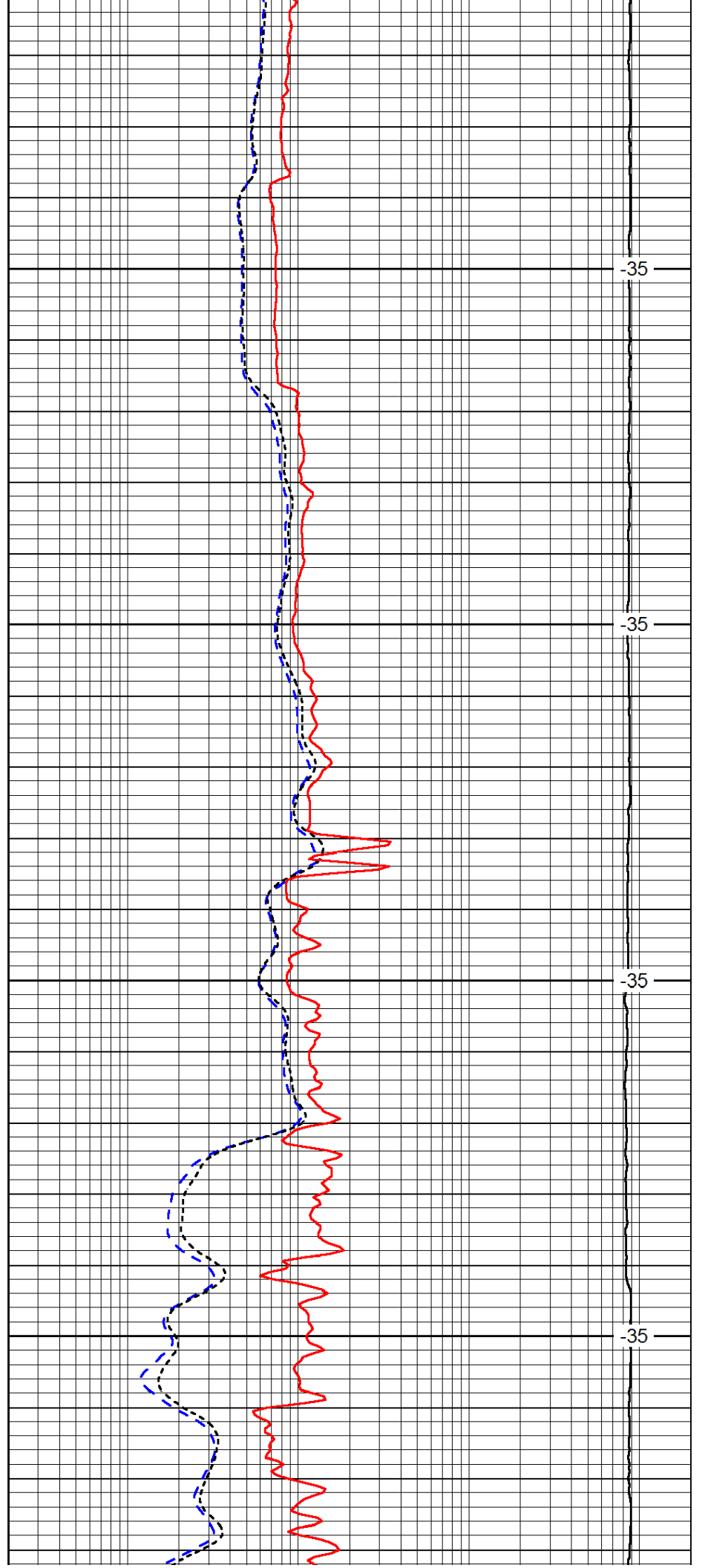


2200

2250

2300

2350

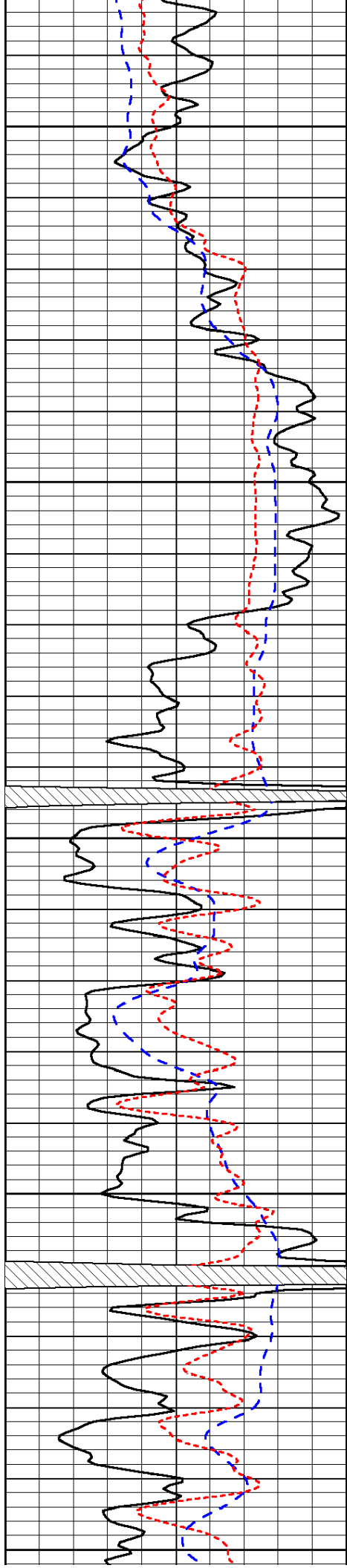


-35

-35

-35

-35



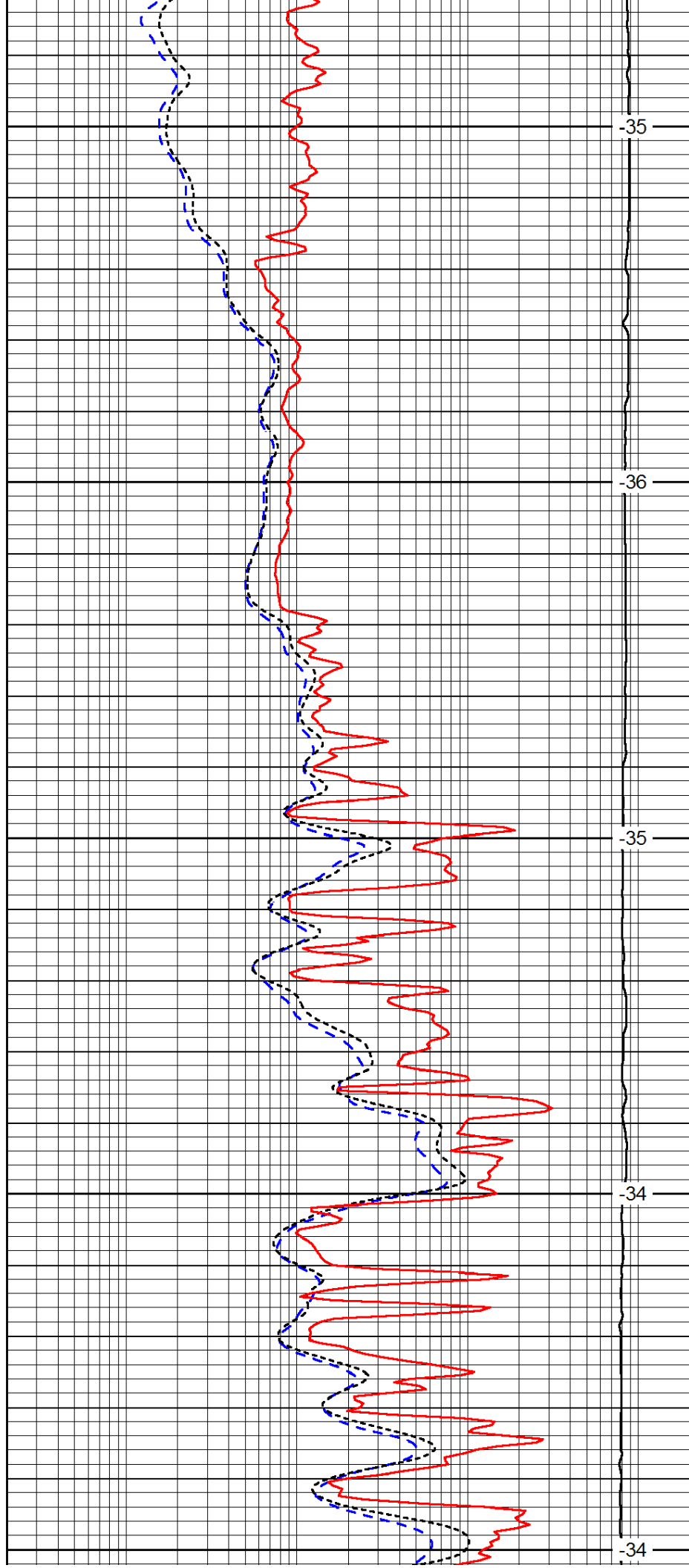
2400

2450

2500

2550

2600



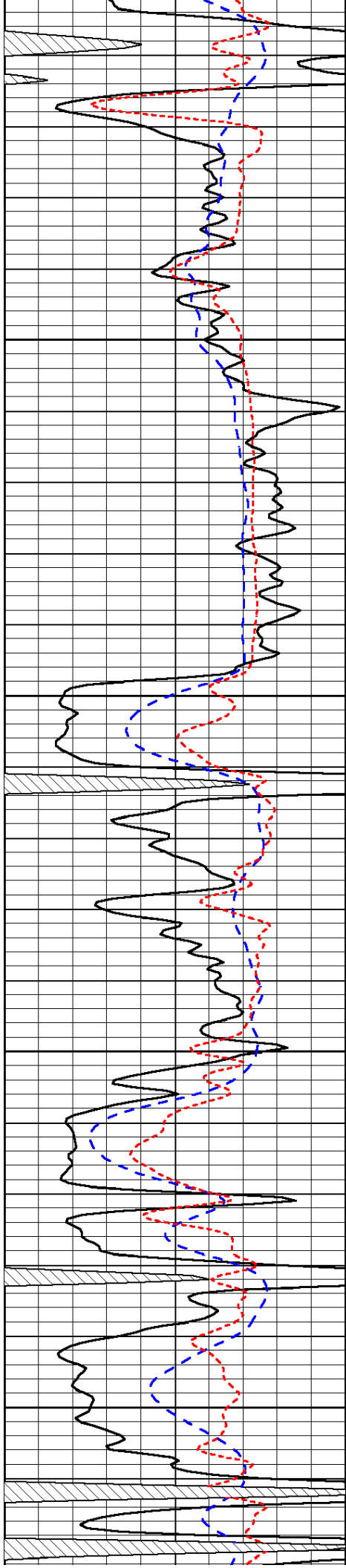
-35

-36

-35

-34

-34

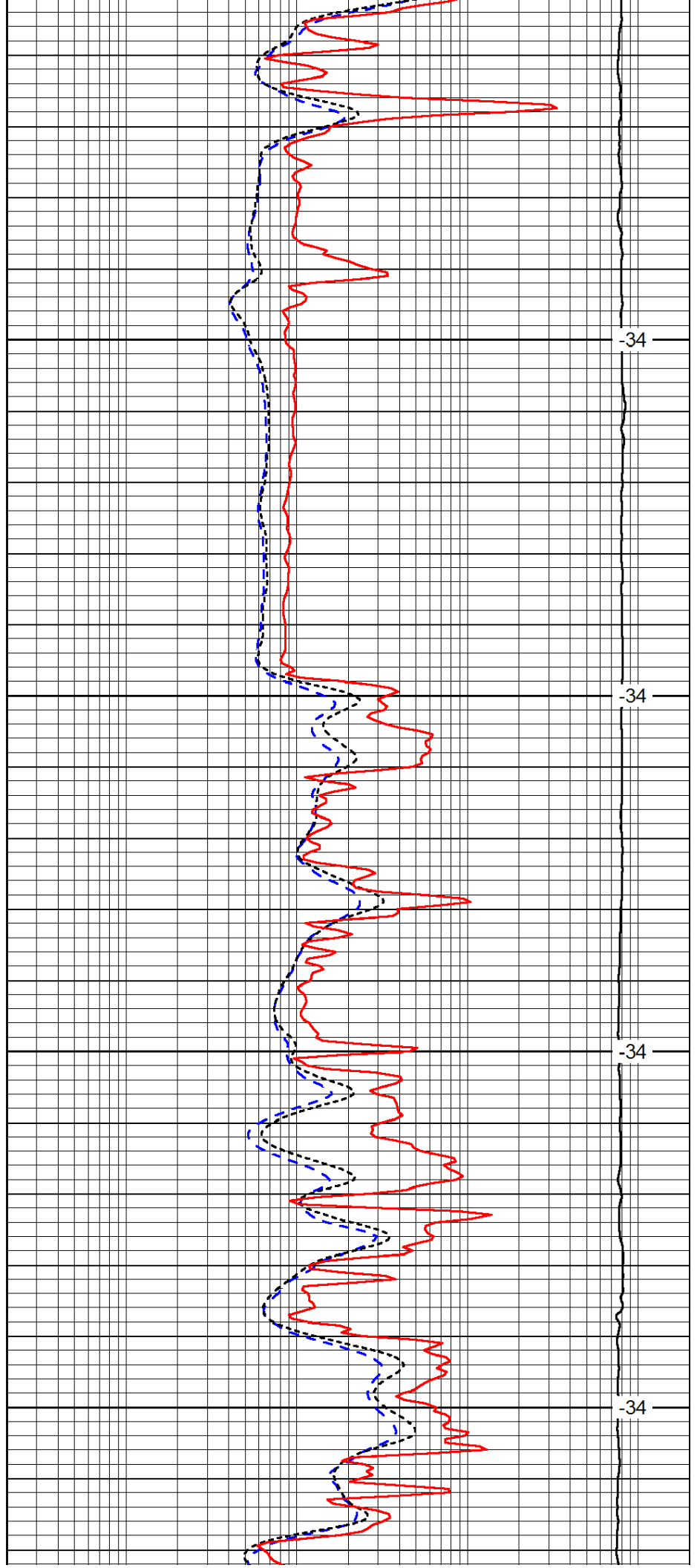


2650

2700

2750

2800

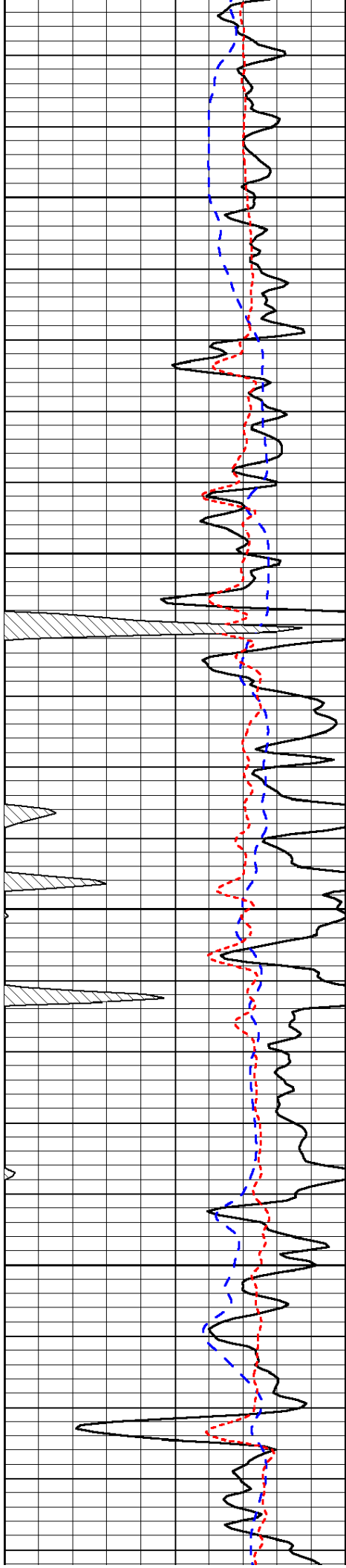


-34

-34

-34

-34



2850

2900

2950

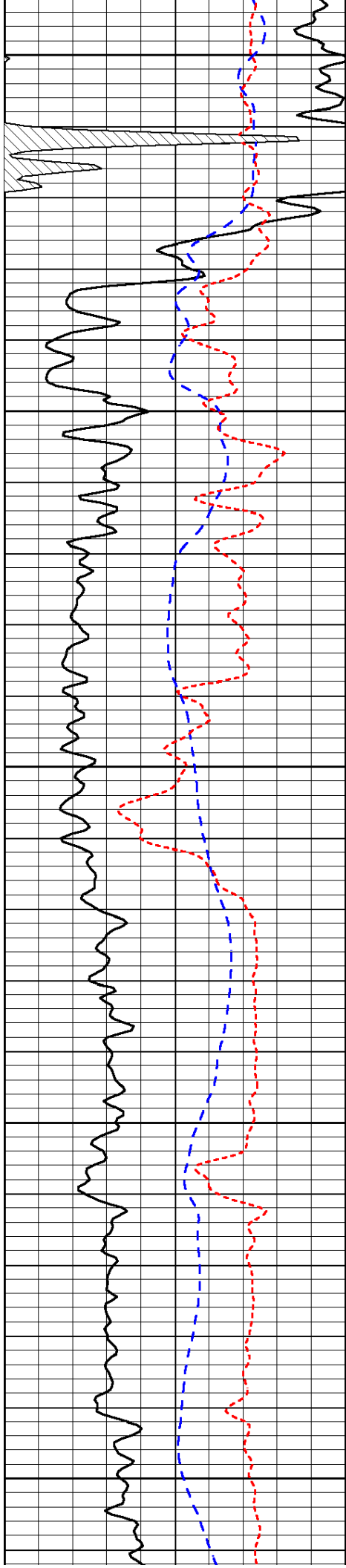
3000

-34

-34

-34

-34



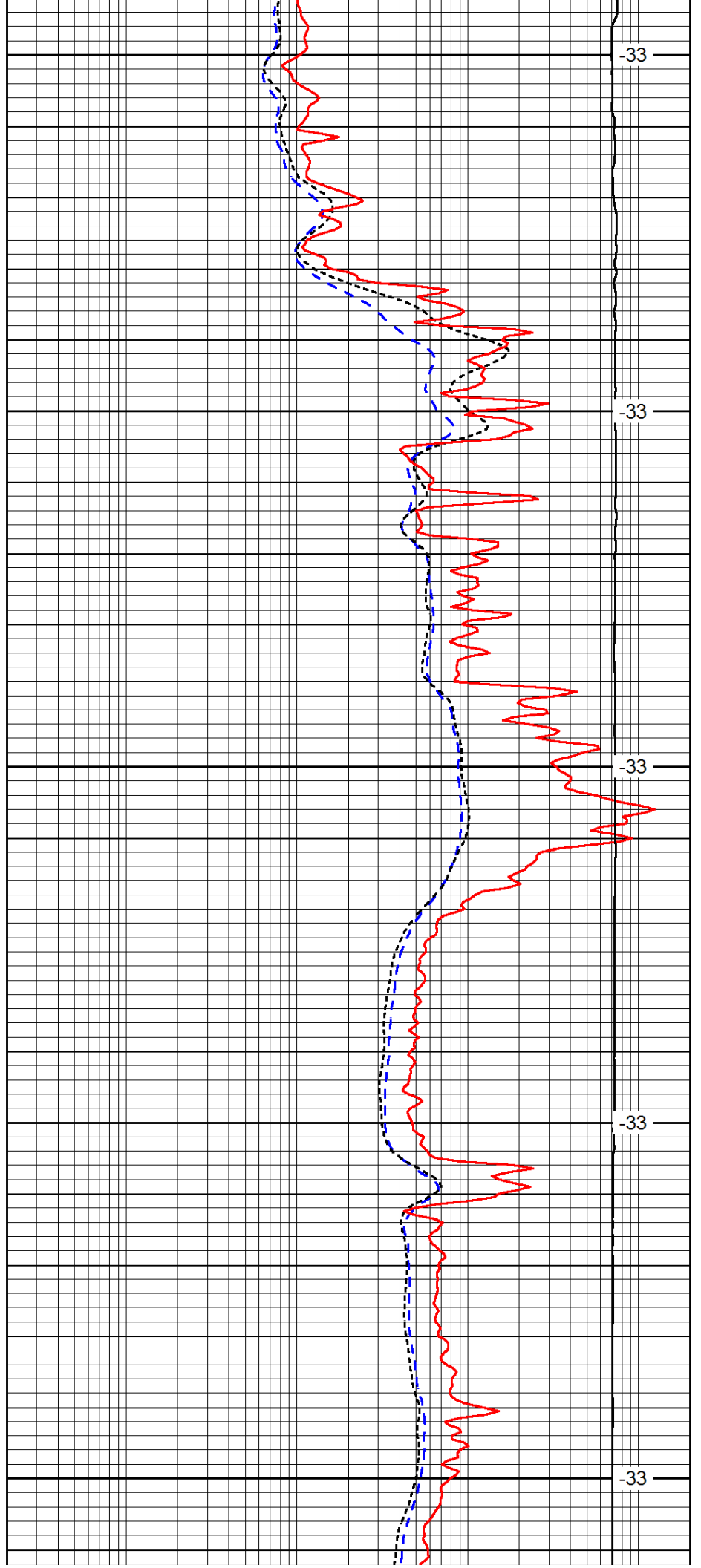
3050

3100

3150

3200

3250



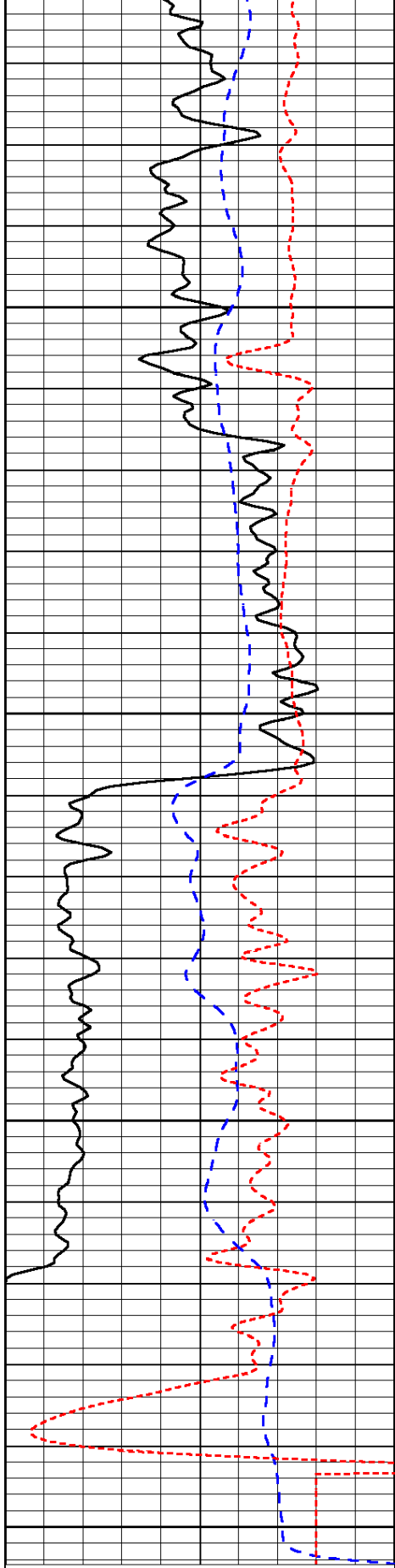
-33

-33

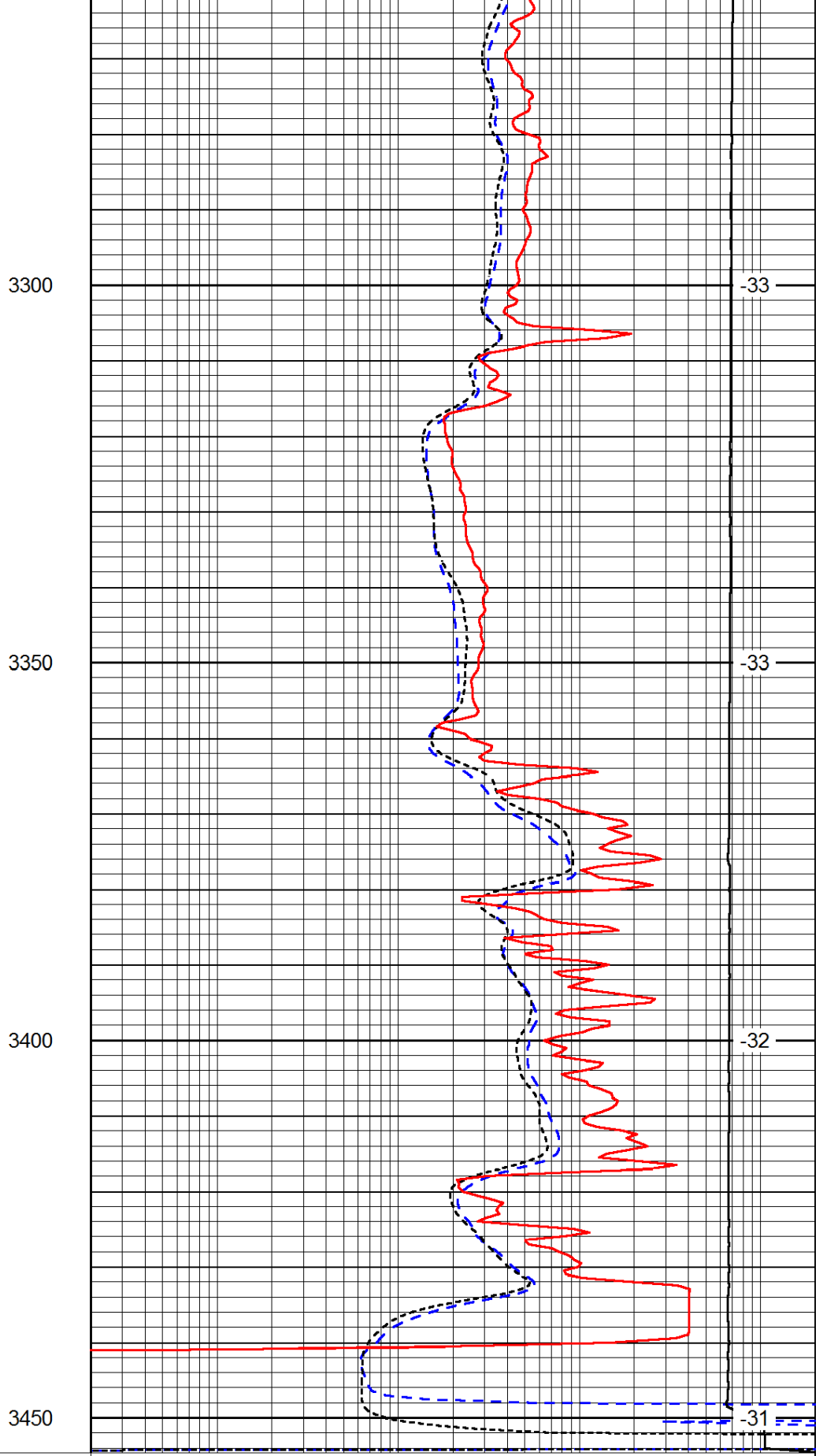
-33

-33

-33



0	Gamma Ray	150
-200	SP (mV)	0
-160	RxoRt	40



0.2	Deep Resistivity	2000
0.2	Medium Resistivity	2000
0.2	Shallow Resistivity	2000
15000	Line Tension	0

LSPD