



Pioneer Energy Services

# Microresistivity Log

15-035-24,611-00-00

API No.

Company **Toto Energy, LLC**  
 Well **Call Me Maybe #2**  
 Field **Maddix North**  
 County **Cowley** State **Kansas**

Location **330' FNL & 1420' FWL**

Other Services  
 CNL/CDL  
 DIL

Permanent Datum **Ground Level** Elevation **1273**  
 Log Measured From **Kelly Bushing** **10** Ft. Above Perm. Datum  
 Drilling Measured From **Frontkelly Bushing**

Elevation  
 K.B. 1283  
 D.F. 1273  
 G.L. 1273

Date	10/18/2014
Run Number	Two
Depth Driller	3450
Depth Logger	3449
Bottom Logged Interval	3448
Top Log Interval	1800
Casing Driller	8.625 @ 255
Casing Logger	251
Bit Size	7.875
Type Fluid in Hole	Chemical
Salinity, ppm CL	1.000
Density / Viscosity	9.6 54
pH / Fluid Loss	9.0 8.0
Source of Sample	Flowline
Rm @ Meas. Temp	1.25 @ 74
Rmf @ Meas. Temp	.94 @ 74
Rmc @ Meas. Temp	1.69 @ 74
Source of Rmf / Rmc	Charts
Rm @ BHT	.84 @ 110
Operating Rig Time	4 Hours
Max Rec. Temp. F	110
Equipment Number	10
Location	Hays
Recorded By	C. Desaire
Witnessed By	Steve Ball

<<< Fold Here >>>

All interpretations are opinions based on inferences from electrical or other measurements and we cannot and do not guarantee the accuracy or correctness of any interpretation, and we shall not, except in the case of gross or willful negligence on our part, be liable or responsible for any loss, costs, damages, or expenses incurred or sustained by anyone resulting from any interpretation made by any of our officers, agents or employees. These interpretations are also subject to our general terms and conditions set out in our current Price Schedule.

### Comments

Thank you for using Pioneer Energy Services  
[www.pioneeres.com](http://www.pioneeres.com)  
 785 625 3858

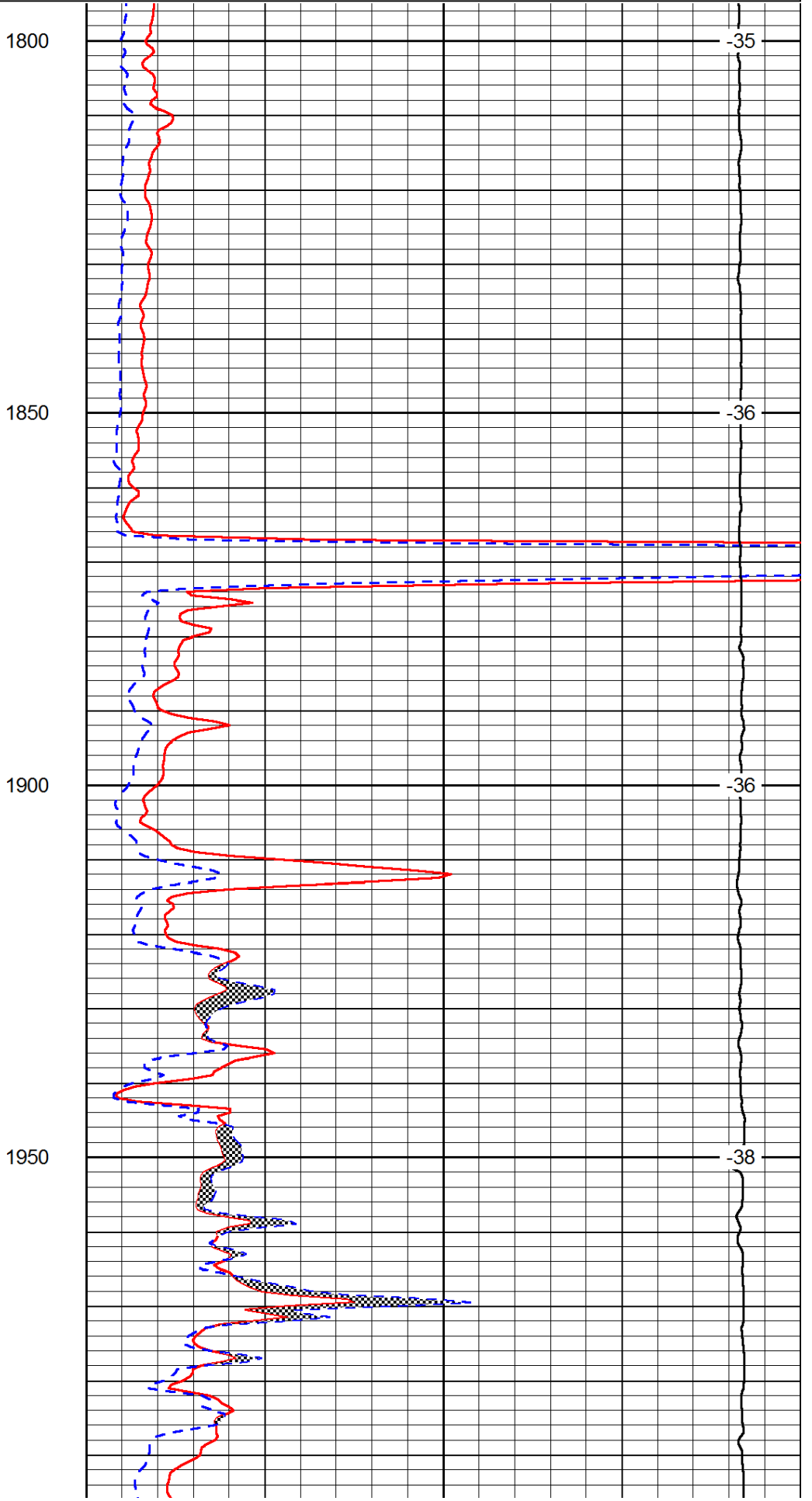
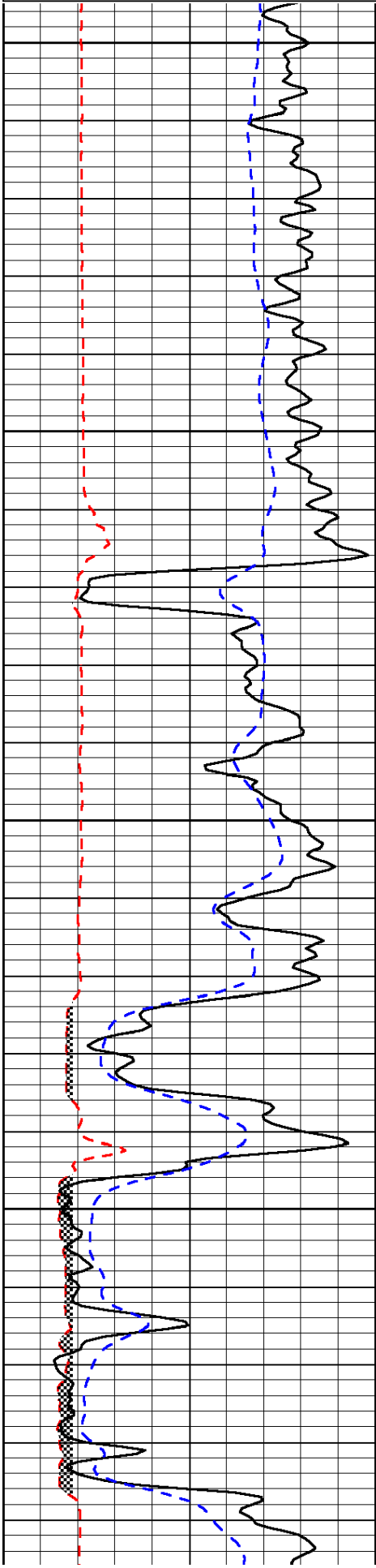
Winfield KS, 7 E, 1 S, S & E thru gate

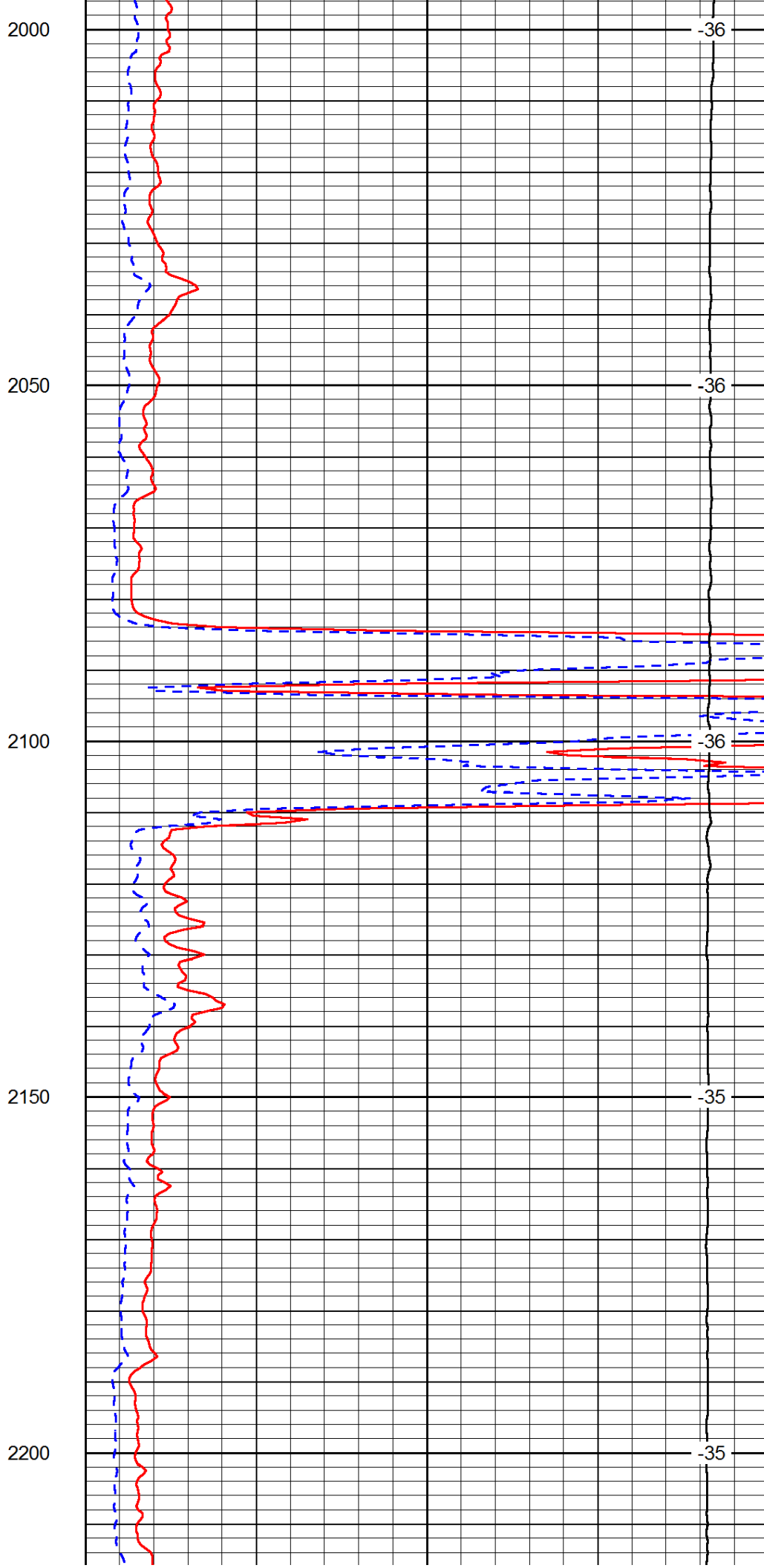
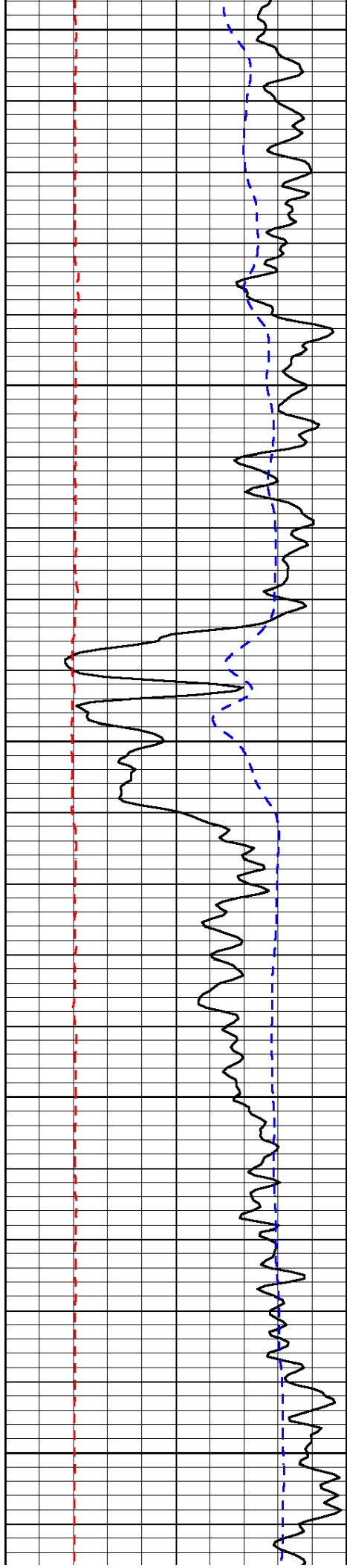
Database File: c:\warrior\data\toto\_call me maybe #2\totohd.db  
 Dataset Pathname: dil/totostk  
 Presentation Format: micro  
 Dataset Creation: Sat Oct 18 15:00:50 2014  
 Charted by: Depth in Feet scaled 1:240

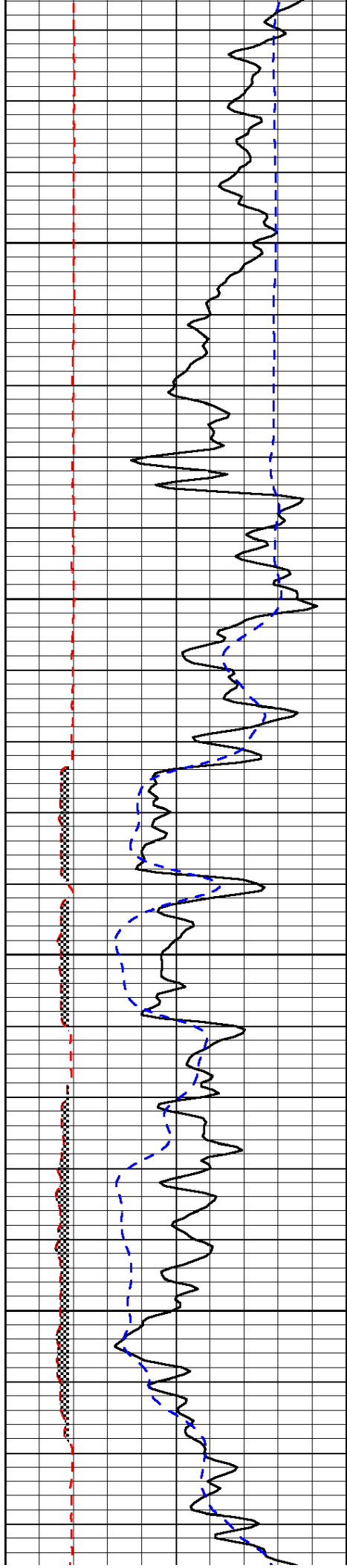
0	Gamma Ray	150
6	MCAL (GAPI)	16
-200	SP (mV)	0

0	Micro Inverse 1 X 1	40
0	Micro Normal 2"	40
15000	Line Weight	0

LSPD





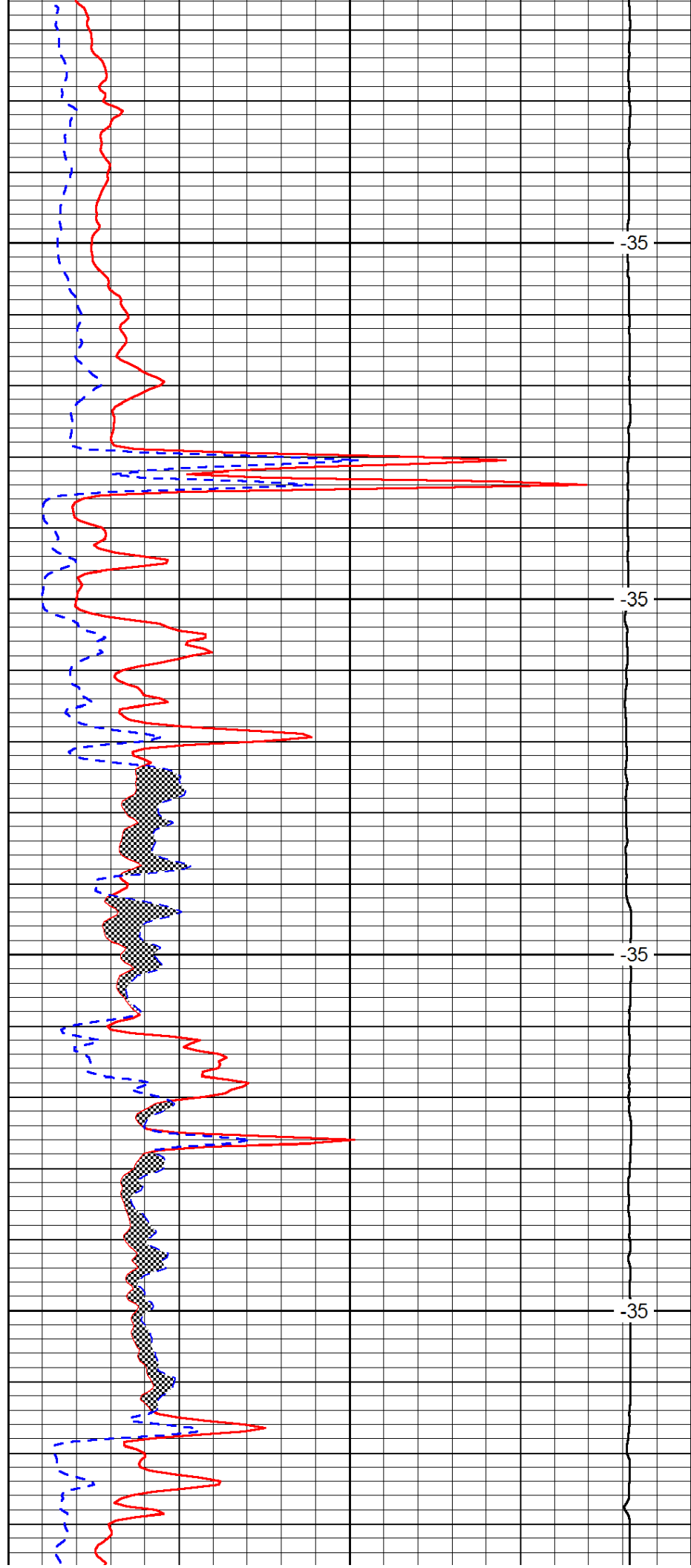


2250

2300

2350

2400

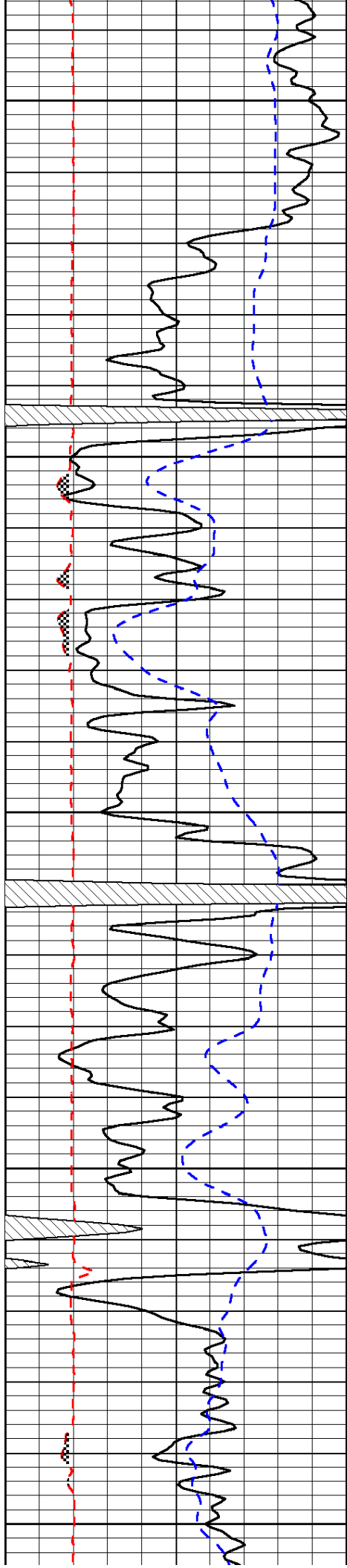


-35

-35

-35

-35



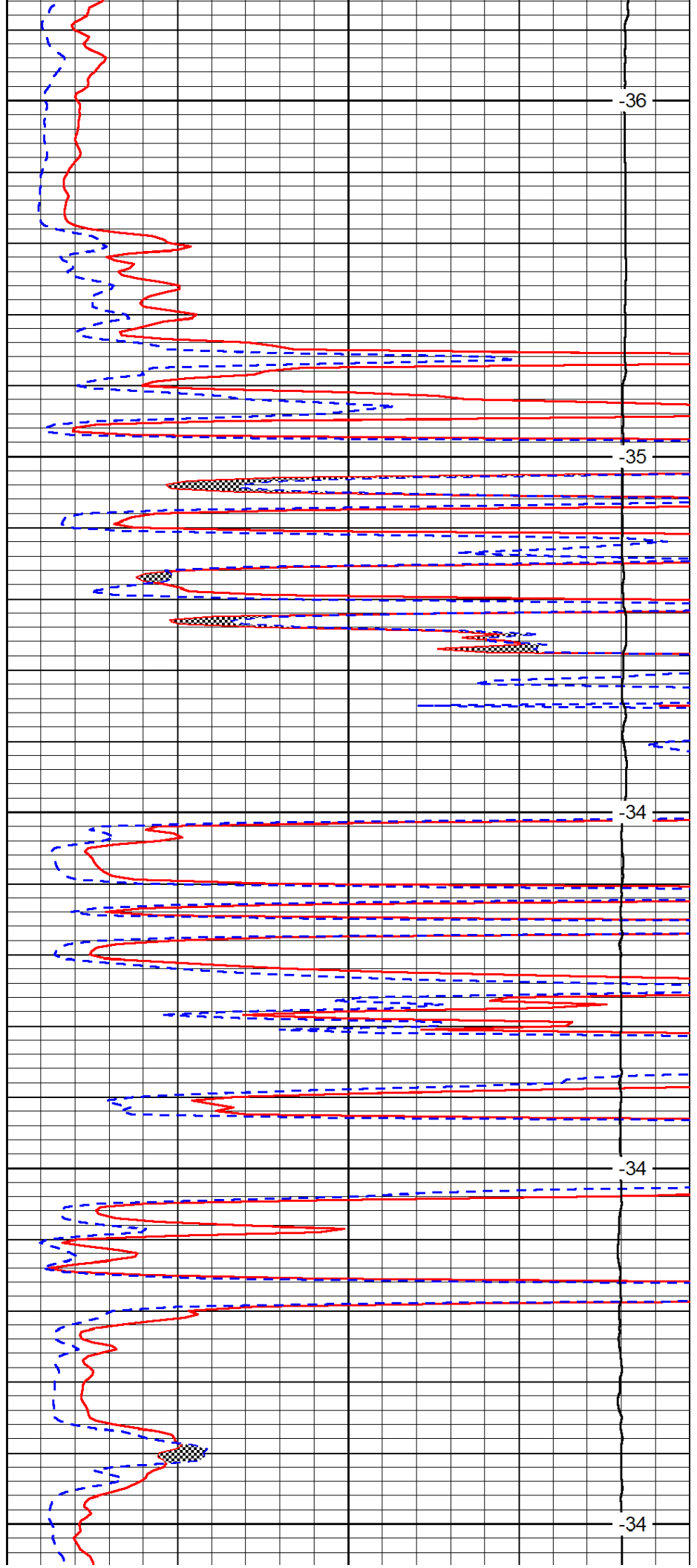
2450

2500

2550

2600

2650



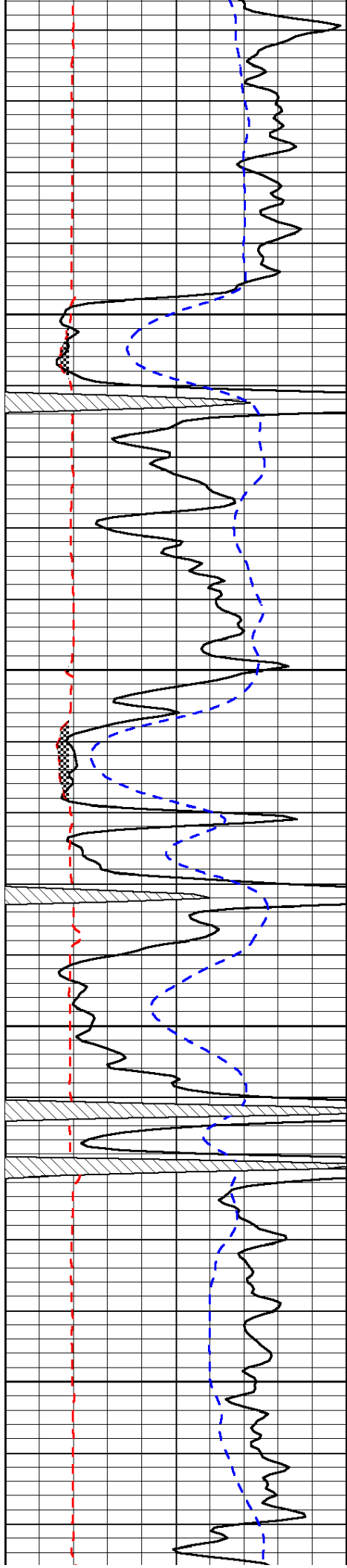
-36

-35

-34

-34

-34

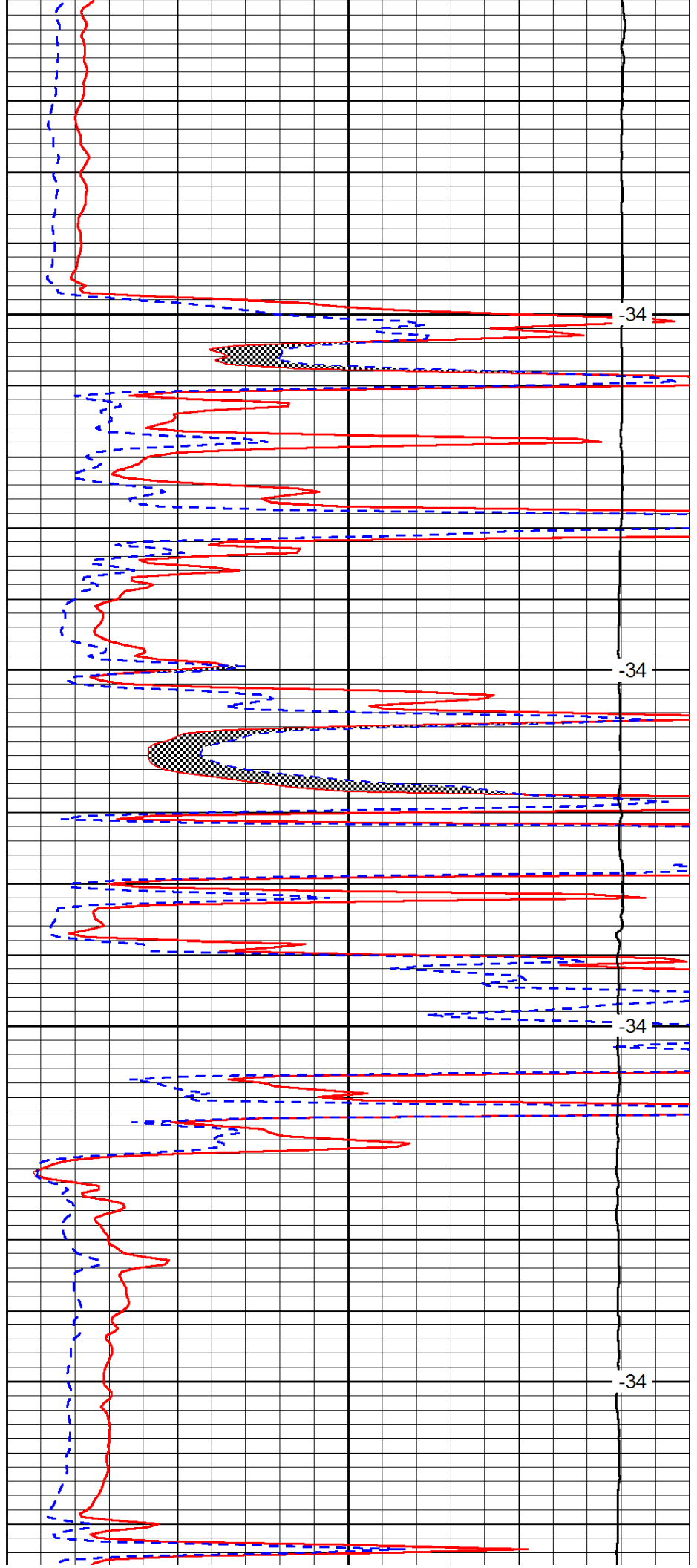


2700

2750

2800

2850

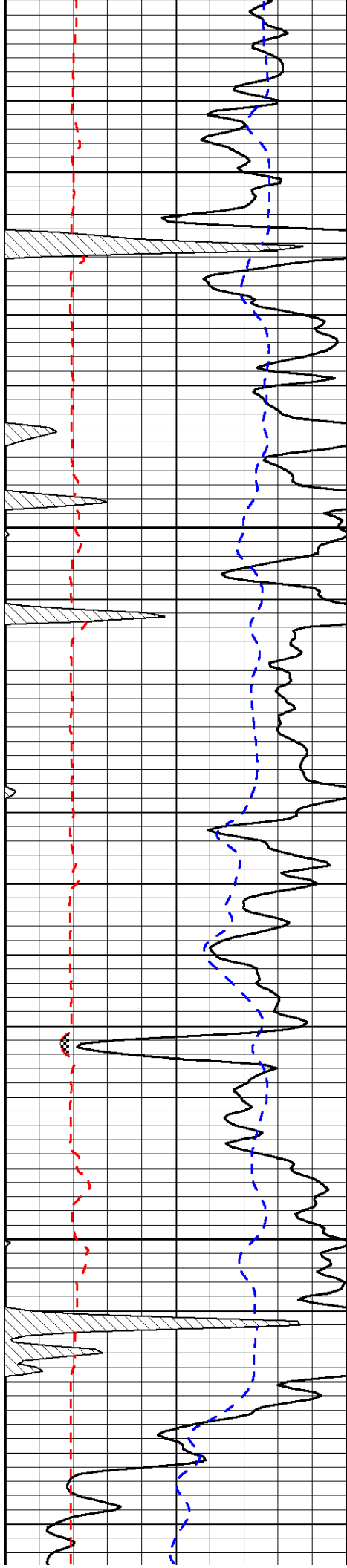


-34

-34

-34

-34



2900

-34

2950

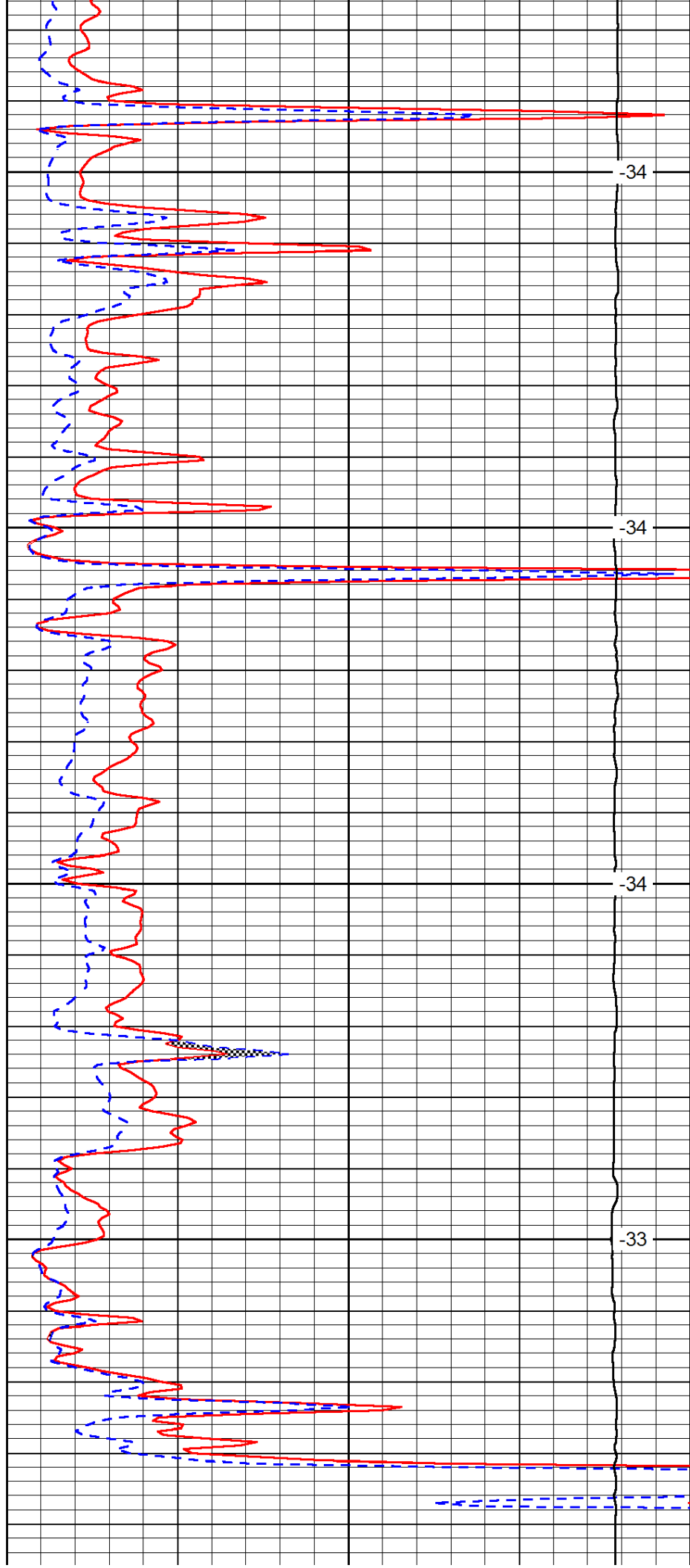
-34

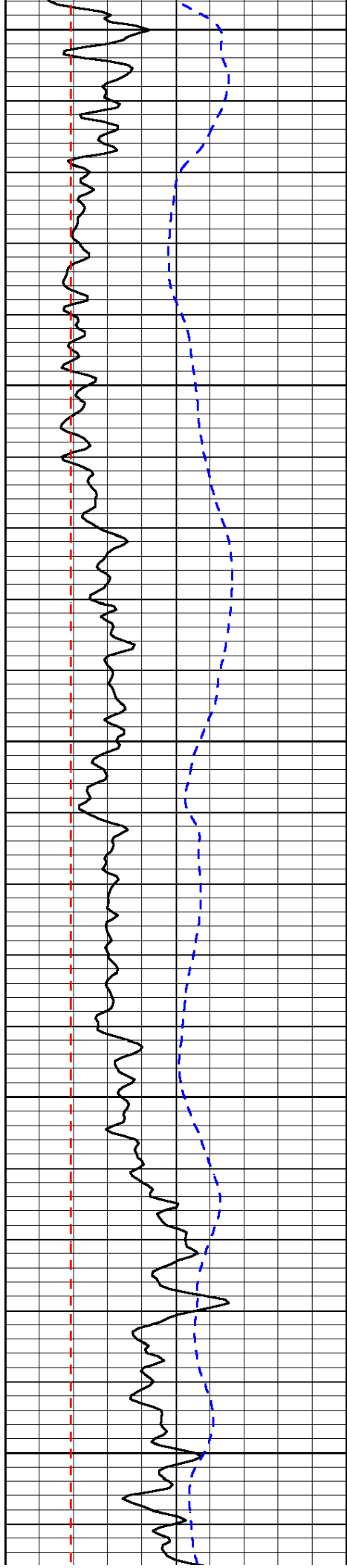
3000

-34

3050

-33





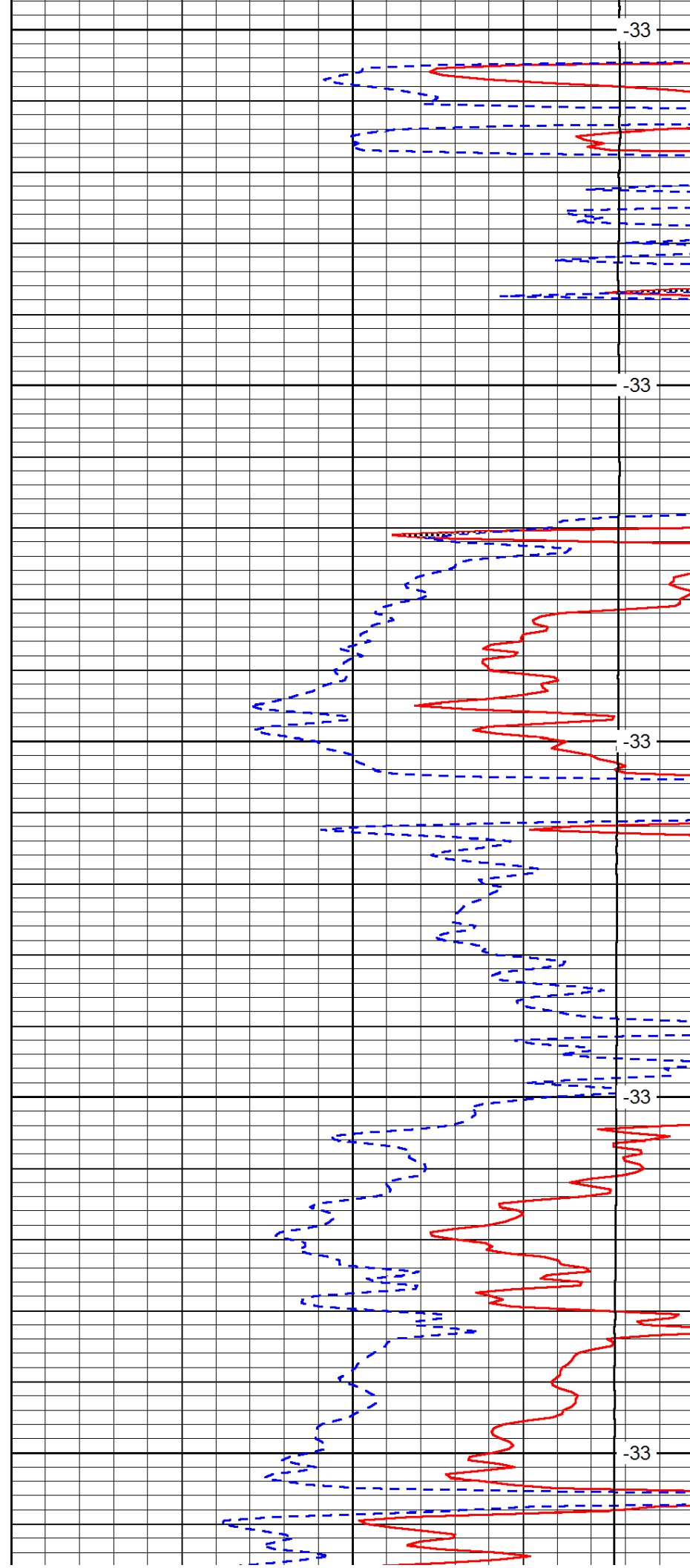
3100

3150

3200

3250

3300



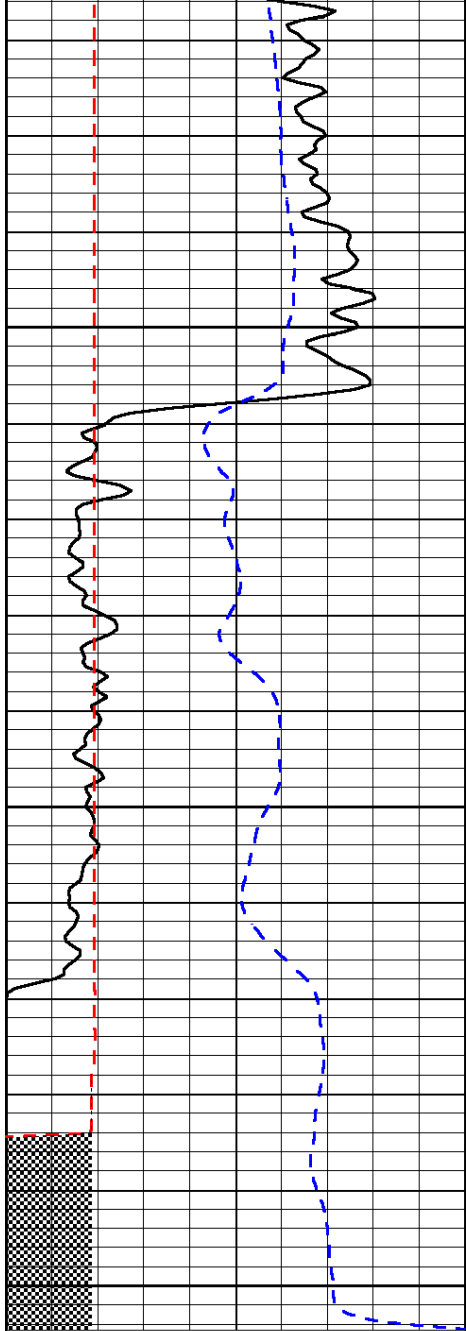
-33

-33

-33

-33

-33

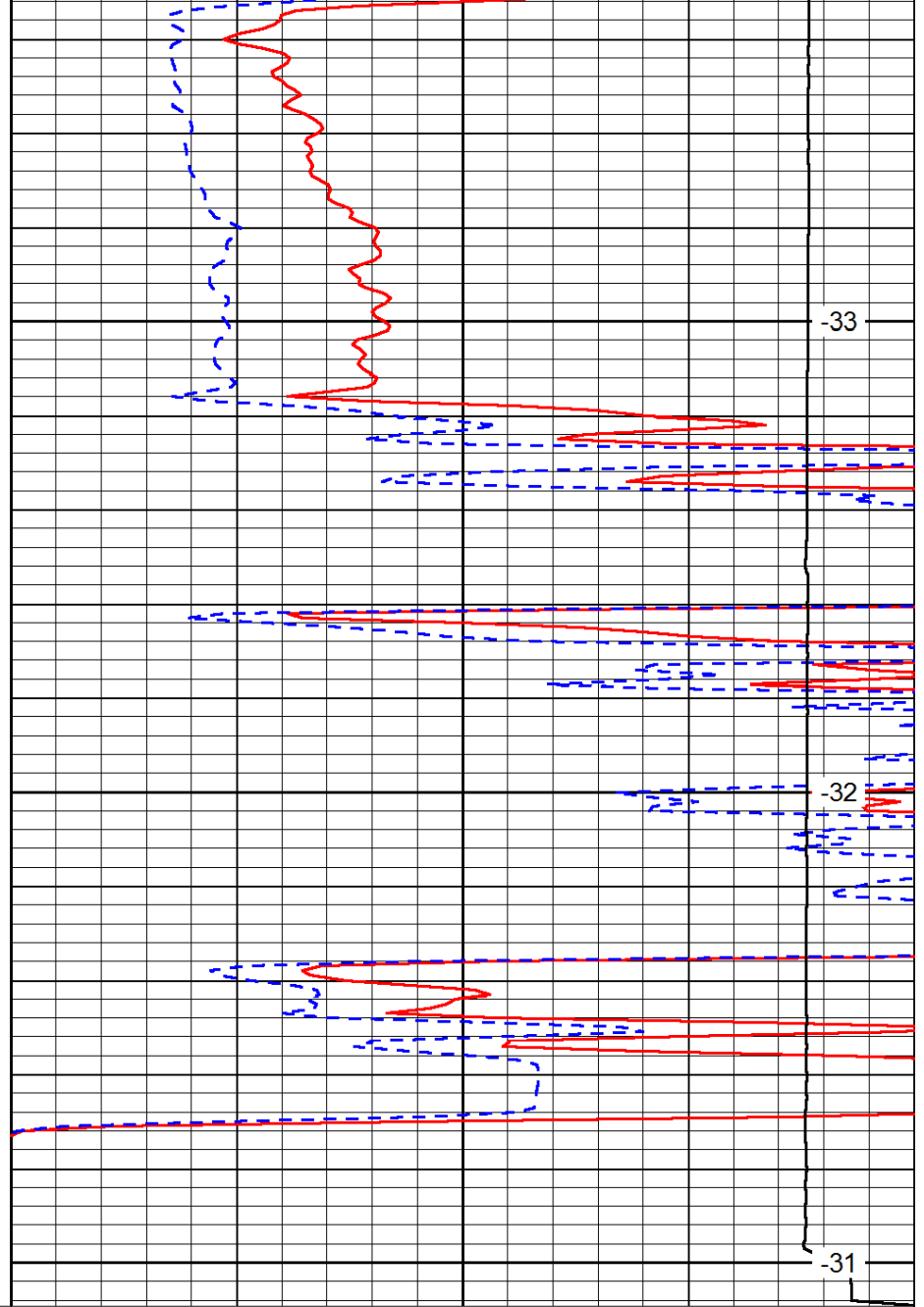


0	Gamma Ray	150
6	MCAL (GAPI)	16
-200	SP (mV)	0

3350

3400

3450



0	Micro Inverse 1 X 1	40
0	Micro Normal 2"	40
15000	Line Weight	0

-33

-32

-31

LSPD