



**COMPLETION
& PRODUCTION
SERVICES CO.**

**MICRO
LOG**

Company MAI OIL OPERATIONS, INC.
Well BERRY #6
Field TRAPP
County RUSSELL State KANSAS

Company MAI OIL OPERATIONS, INC.
Well BERRY #6
Field TRAPP
County RUSSELL
State KANSAS

Location: API #: 15-167-24023-00-00
1675' FNL & 1260' FEL
SW - NW - SE - NE
SEC 33 TWP 15S RGE 13W
Permanent Datum GROUND LEVEL Elevation 1894
Log Measured From KELLY BUSHING 8' A.G.L.
Drilling Measured From KELLY BUSHING
Other Services
CNL/CDL
DIL
Elevation
K.B. 1902
D.F. 1900
G.L. 1894

Date	12/16/14		
Run Number	TWO		
Depth Driller	3420		
Depth Logger	3420		
Bottom Logged Interval	3418		
Top Log Interval	2700		
Casing Driller	8 5/8 @ 515'		
Casing Logger	514'		
Bit Size	7.875		
Type Fluid in Hole	CHEMICAL MUD		
Density / Viscosity	9.3/55	CHLORIDES 3,000 PPM	
pH / Fluid Loss	9.0/8.2		
Source of Sample	FLOWLINE		
Rm @ Meas. Temp	0.90 @ 70F		
Rmf @ Meas. Temp	0.68 @ 70F		
Rmc @ Meas. Temp	1.09 @ 70F		
Source of Rmf / Rmc	MEASURED		
Rm @ BHT	0.57 @ 110F		
Time Circulation Stopped	2 HOURS		
Time Logger on Bottom			
Maximum Recorded Temperature	110F		
Equipment Number	3802		
Location	HAYS, KS.		
Recorded By	IAN MABB		
Witnessed By	WYATT URBAN		

<<< Fold Here >>>

All interpretations are opinions based on inferences from electrical or other measurements and we cannot and do not guarantee the accuracy or correctness of any interpretation, and we shall not, except in the case of gross or willful negligence on our part, be liable or responsible for any loss, costs, damages, or expenses incurred or sustained by anyone resulting from any interpretation made by any of our officers, agents or employees. These interpretations are also subject to our general terms and conditions set out in our current Price Schedule.

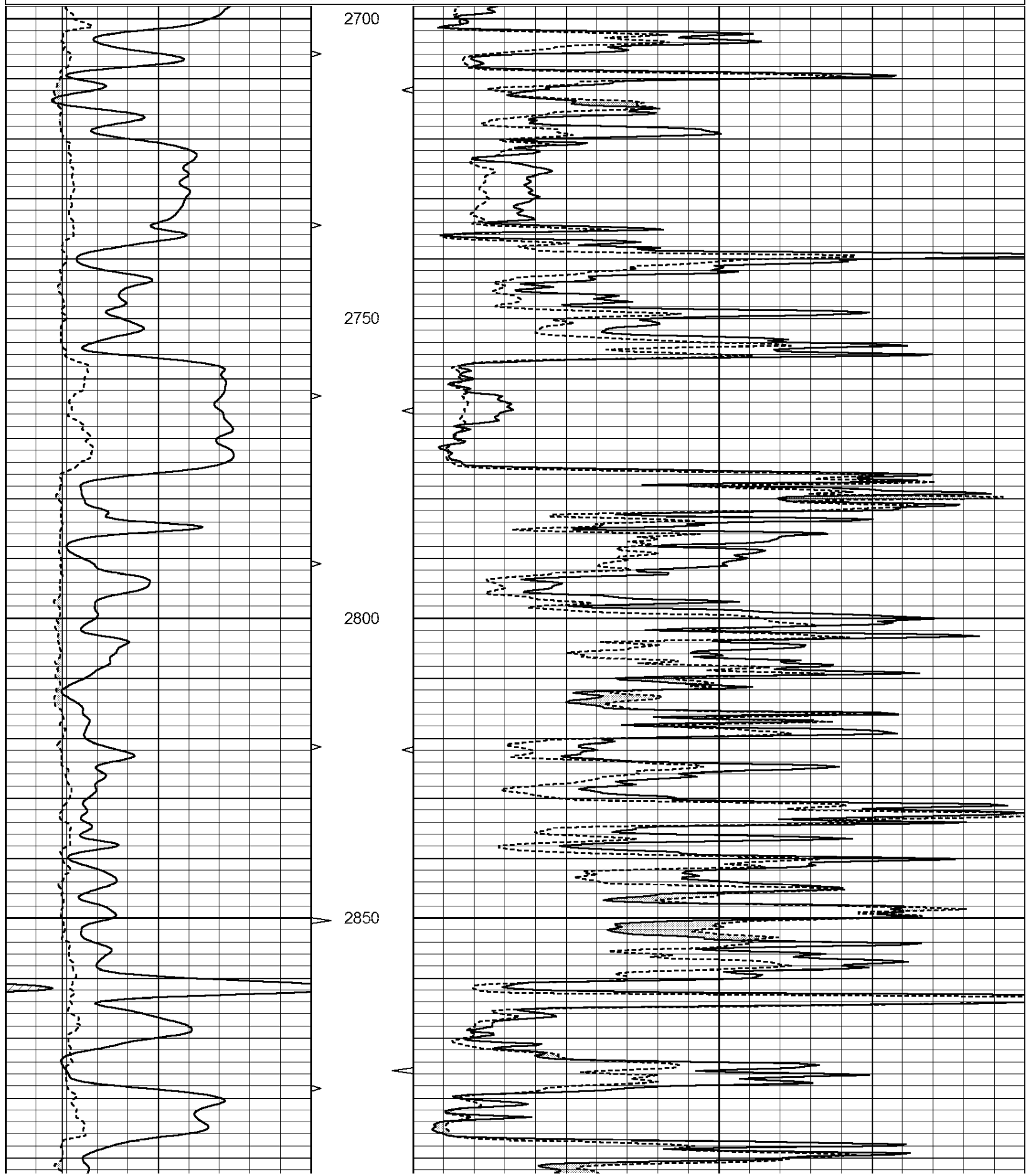
Comments

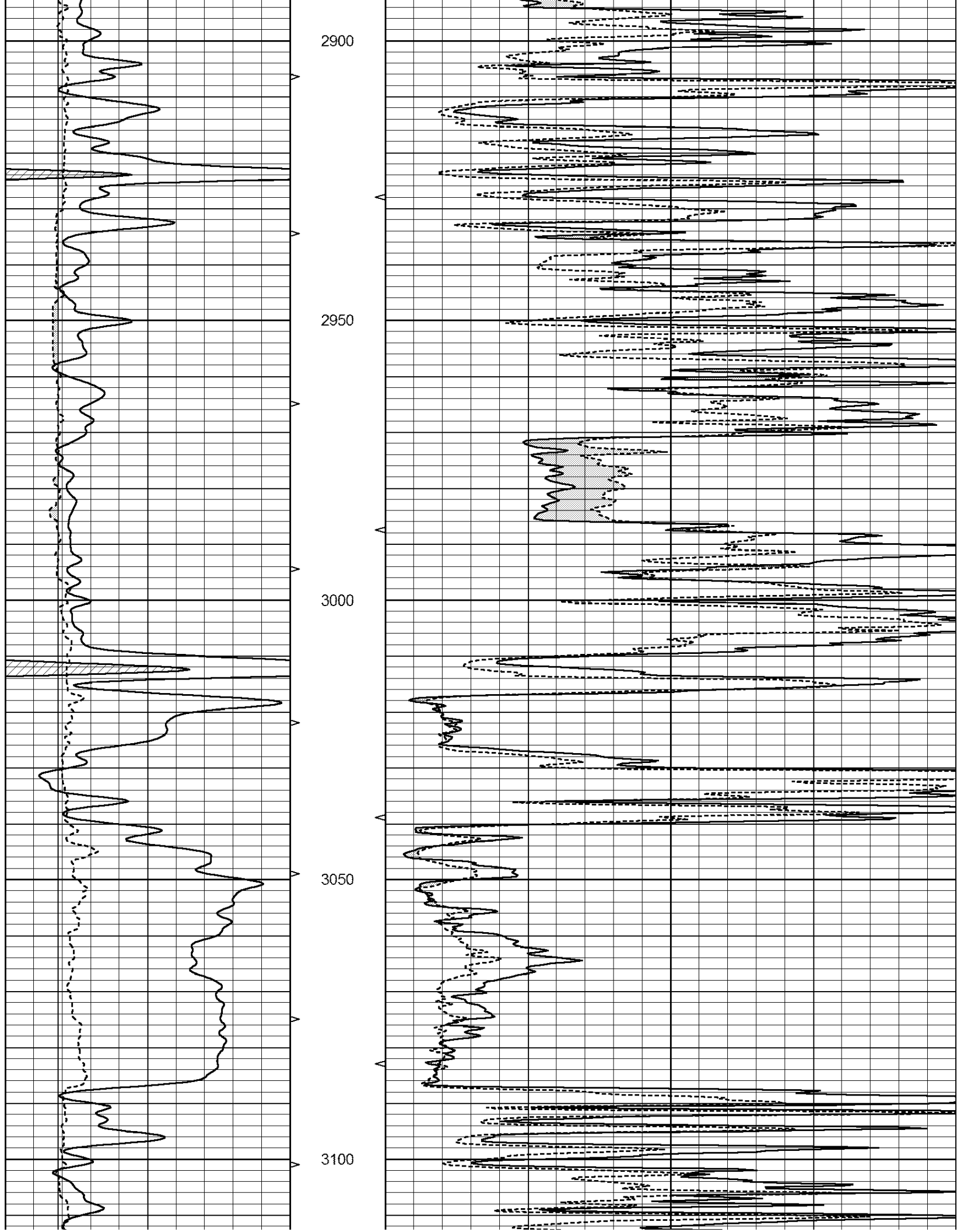
NABORS COMPLETION & PRODUCTION SERVICES CO.
785 (628 - 6395)

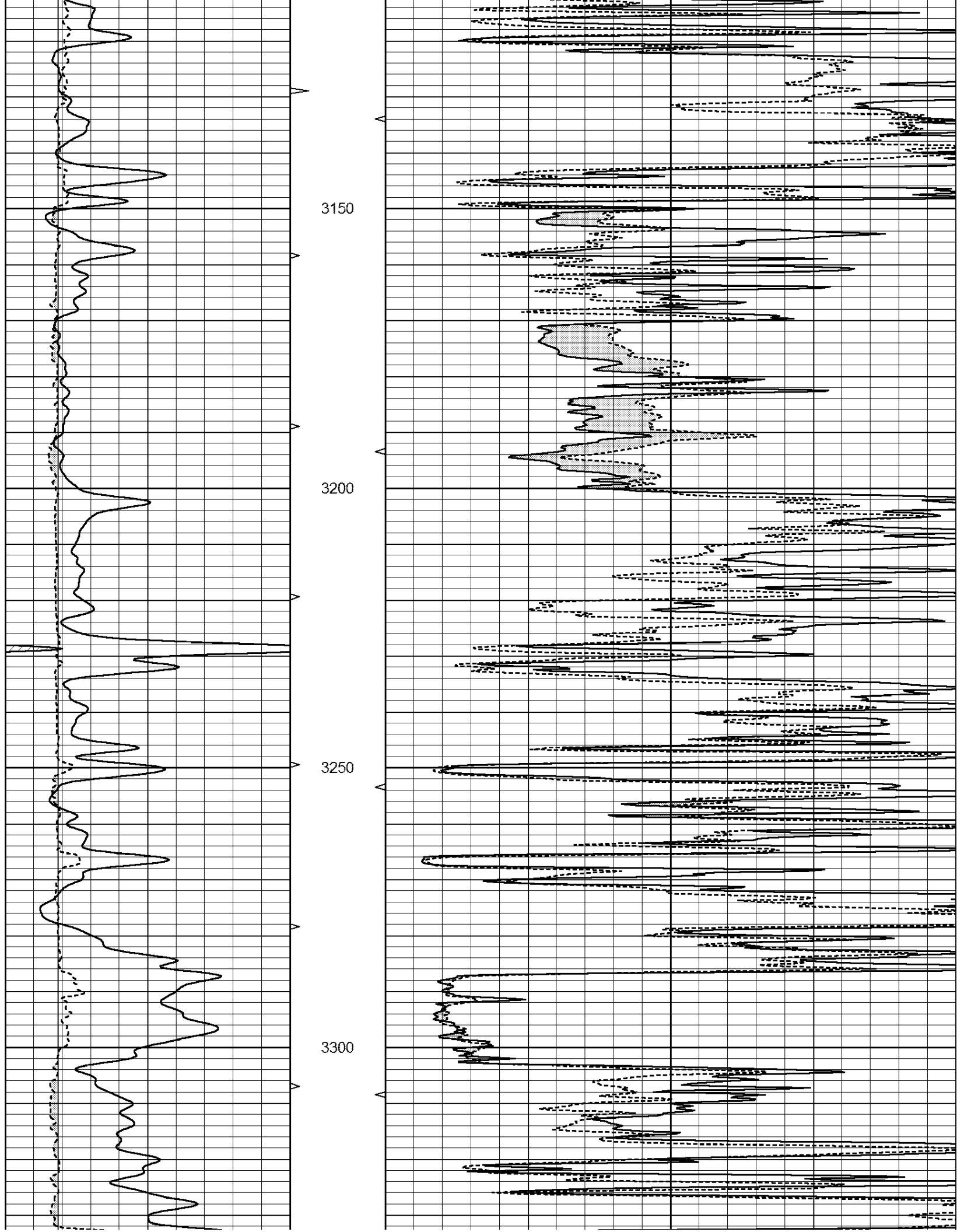
THANK YOU FOR YOUR BUSINESS

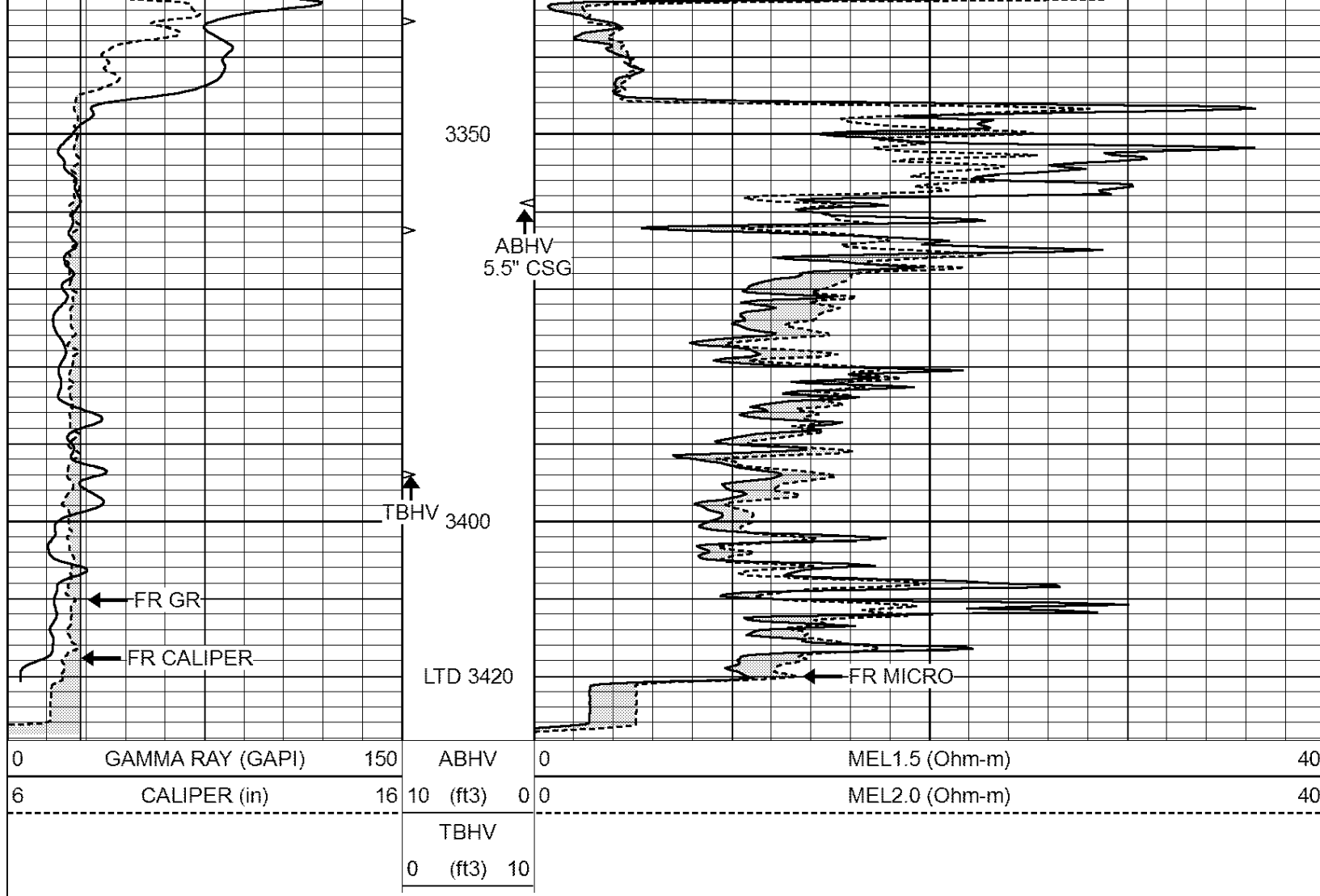
DIRECTIONS : RUSSELL, KS. - SOUTH 9 MILES (RADKE SIGHN) MICHAELS RD. - EAST 6 3/4 - SOUTH INTO

0	GAMMA RAY (GAPI)	150	ABHV	0	MEL1.5 (Ohm-m)	40
6	CALIPER (in)	16	10 (ft3)	0 0	MEL2.0 (Ohm-m)	40
			TBHV			
			0 (ft3)	10		





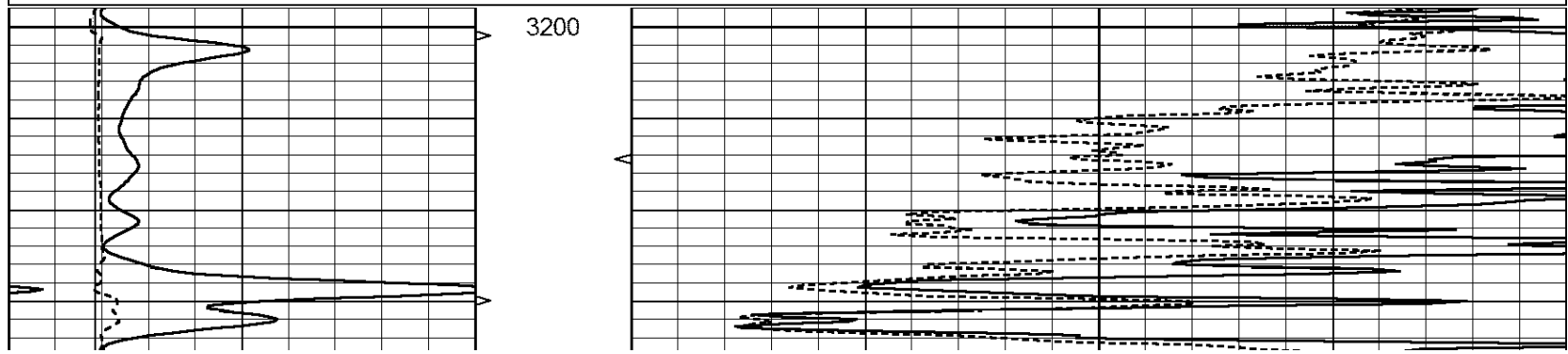


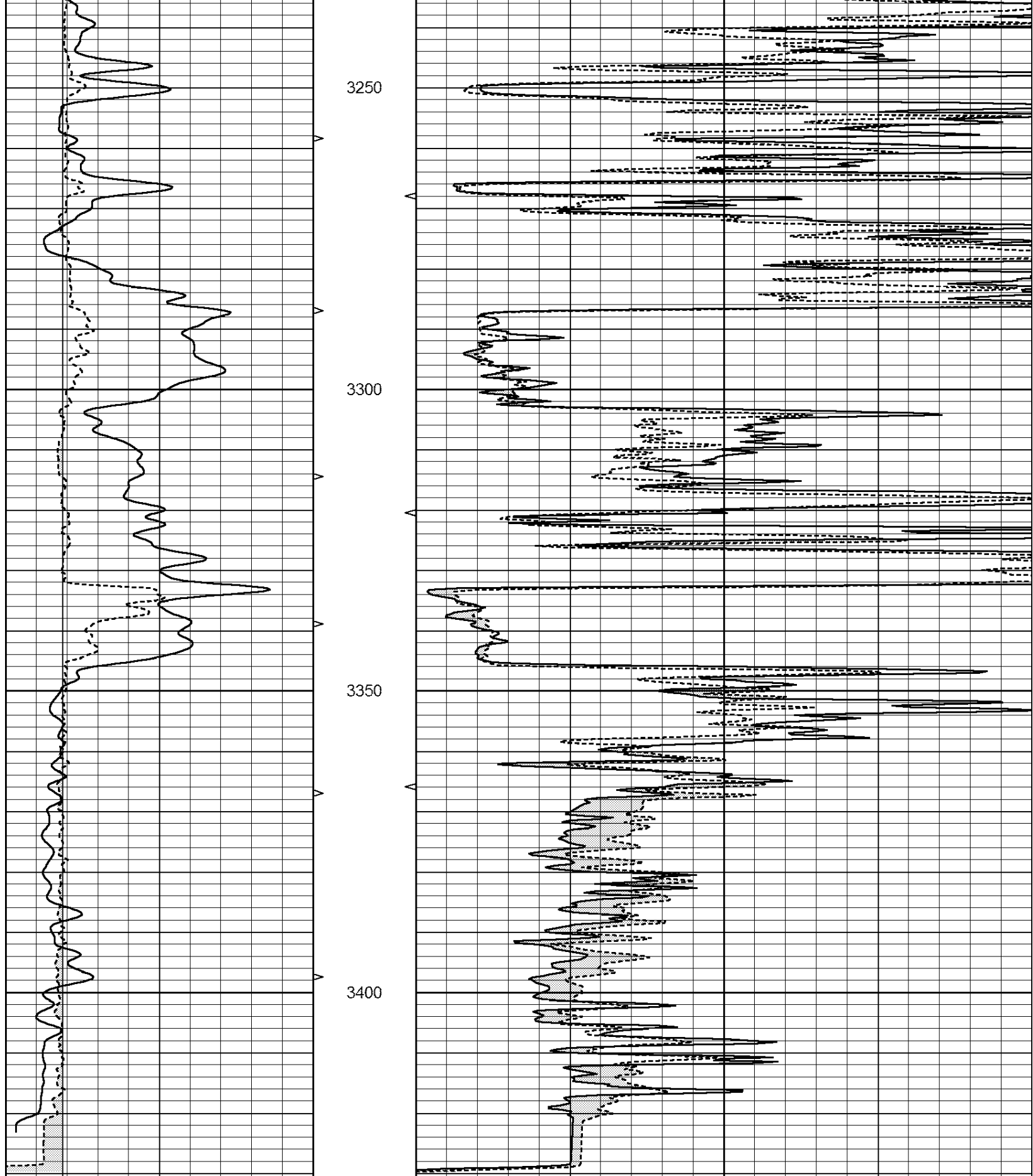


REPEAT SECTION

Database File: 26425ddn.db
 Dataset Pathname: pass7.1
 Presentation Format: _micro
 Dataset Creation: Tue Dec 16 22:24:54 2014 by Calc Open-Cased 090629
 Charted by: Depth in Feet scaled 1:240

0	GAMMA RAY (GAPI)	150	ABHV	0	MEL1.5 (Ohm-m)	40
6	CALIPER (in)	16	10 (ft3) 0 0	0	MEL2.0 (Ohm-m)	40
			TBHV			
			0 (ft3) 10			





0	GAMMA RAY (GAPI)	150	ABHV	0	MEL1.5 (Ohm-m)	40
6	CALIPER (in)	16	10 (ft3)	0 0	MEL2.0 (Ohm-m)	40
			TBHV			
			0 (ft3)	10		

Calibration Report

Database File: 26425ddn.db
 Dataset Pathname: pass8.1
 Dataset Creation: Tue Dec 16 22:49:20 2014 by Calc Open-Cased 090629

MICRO Calibration Report

Serial Number: MICRO4
 Tool Model: PROBE
 Performed: Fri Dec 05 14:21:30 2014

Caliper Calibration: Gain=2.000 Offset=-4.800

	Low Cal	High Cal
References	8.600	14.000
Readings	5.934	7.767

1.5" Calibration: Gain=30.000 Offset=-1.200

	Low Cal	High Cal
References	0.000	20.000
Readings	0.013	1.547

2" Calibration: Gain=42.000 Offset=-0.600

	Low Cal	High Cal
References	0.000	20.000
Readings	0.017	1.202

Gamma Ray Calibration Report

Serial Number: GR2
 Tool Model: OPEN
 Performed: Tue Nov 25 21:32:24 2014

Calibrator Value: 200.0 GAPI

Background Reading:	0.0	cps
Calibrator Reading:	740.0	cps

Sensitivity: 0.3100 GAPI/cps