



**COMPLETION
& PRODUCTION
SERVICES CO.**

**COMPENSATED
DENSITY / NEUTRON
LOG**

Company MAI OIL OPERATIONS, INC.
Well BERRY #6
Field TRAPP
County RUSSELL State KANSAS

Company MAI OIL OPERATIONS, INC.
Well BERRY #6
Field TRAPP
County RUSSELL
State KANSAS

Location: API #: 15-167-24023-00-00
1675' FNL & 1260' FEL
SW - NW - SE - NE
SEC 33 TWP 15S RGE 13W
Permanent Datum GROUND LEVEL Elevation 1894
Log Measured From KELLY BUSHING 8' A.G.L.
Drilling Measured From KELLY BUSHING
Other Services
DILMEL
Elevation
K.B. 1902
D.F. 1900
G.L. 1894

Date	12/16/14		
Run Number	ONE		
Depth Driller	3420		
Depth Logger	3420		
Bottom Logged Interval	3396		
Top Log Interval	2700		
Casing Driller	8 5/8 @ 515'		
Casing Logger	514'		
Bit Size	7.875		
Type Fluid in Hole	CHEMICAL MUD		
Density / Viscosity	9.3/55	CHLORIDES 3,000 PPM	
pH / Fluid Loss	9.0/8.2		
Source of Sample	FLOWLINE		
Rm @ Meas. Temp	0.90 @ 70F		
Rmf @ Meas. Temp	0.68 @ 70F		
Rmc @ Meas. Temp	1.09 @ 70F		
Source of Rmf / Rmc	MEASURED		
Rm @ BHT	0.57 @ 110F		
Time Circulation Stopped	2 HOURS		
Time Logger on Bottom			
Maximum Recorded Temperature	110F		
Equipment Number	3802		
Location	HAYS, KS.		
Recorded By	IAN MABB		
Witnessed By	WYATT URBAN		

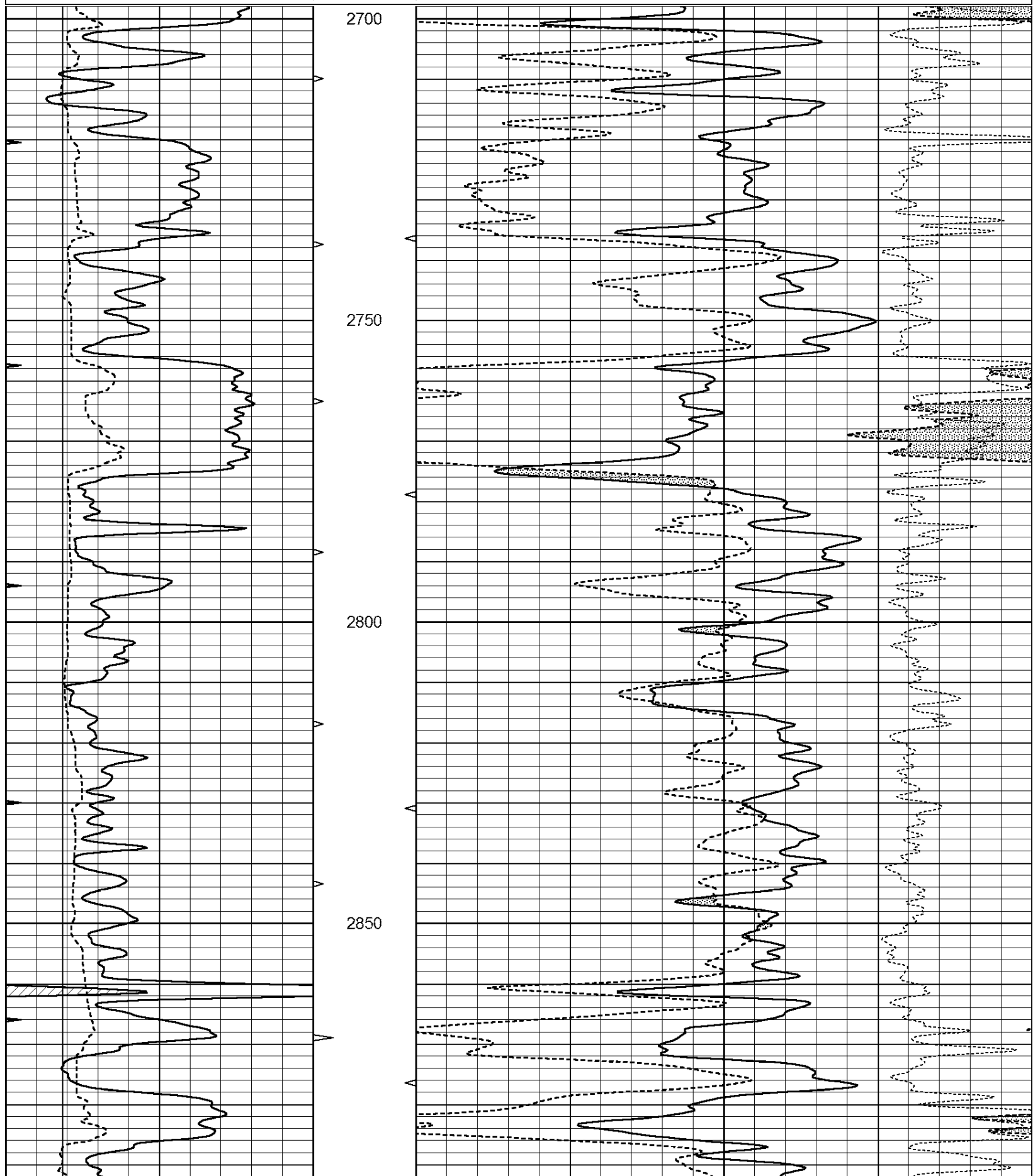
<<< Fold Here >>>

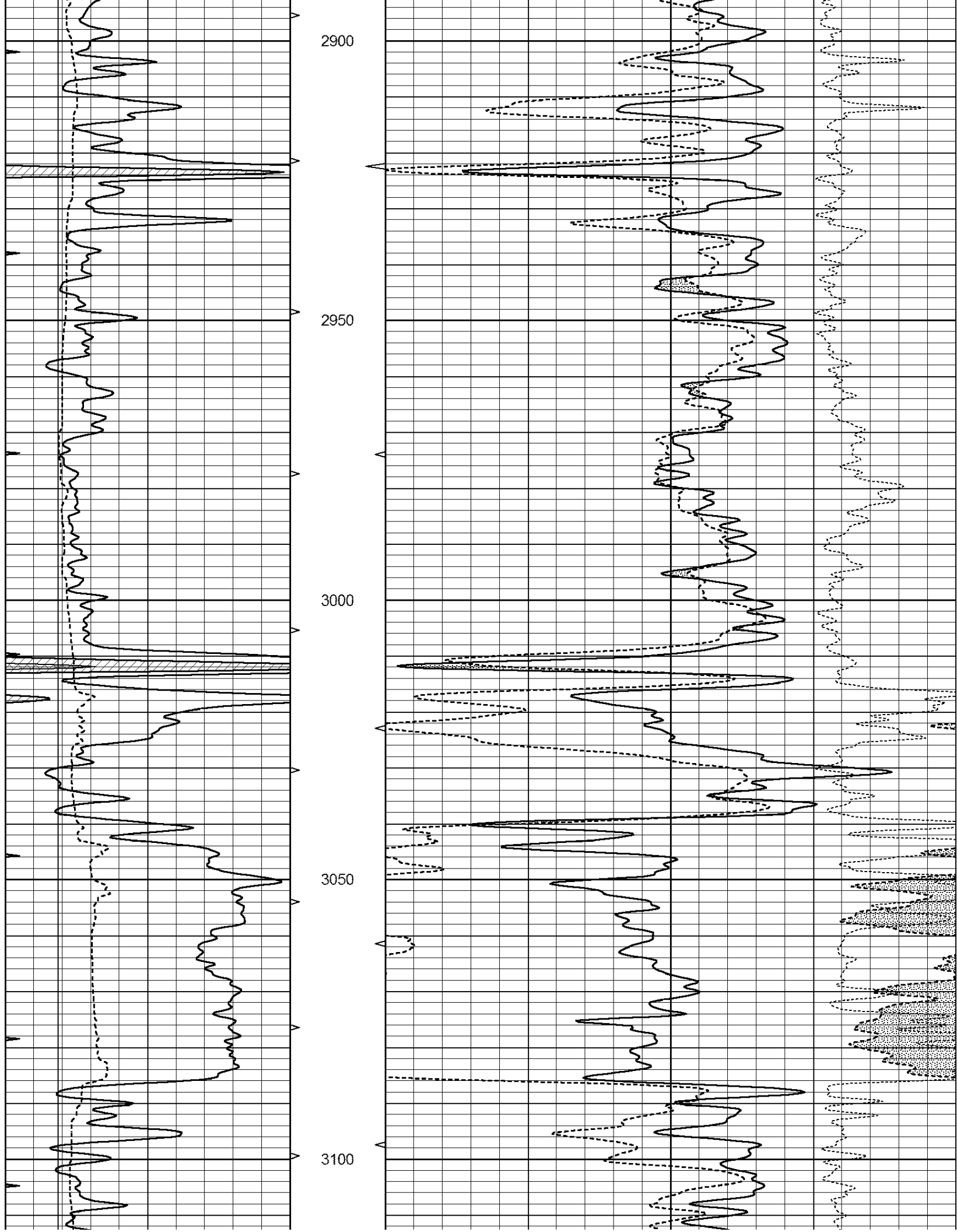
All interpretations are opinions based on inferences from electrical or other measurements and we cannot and do not guarantee the accuracy or correctness of any interpretation, and we shall not, except in the case of gross or willful negligence on our part, be liable or responsible for any loss, costs, damages, or expenses incurred or sustained by anyone resulting from any interpretation made by any of our officers, agents or employees. These interpretations are also subject to our general terms and conditions set out in our current Price Schedule.

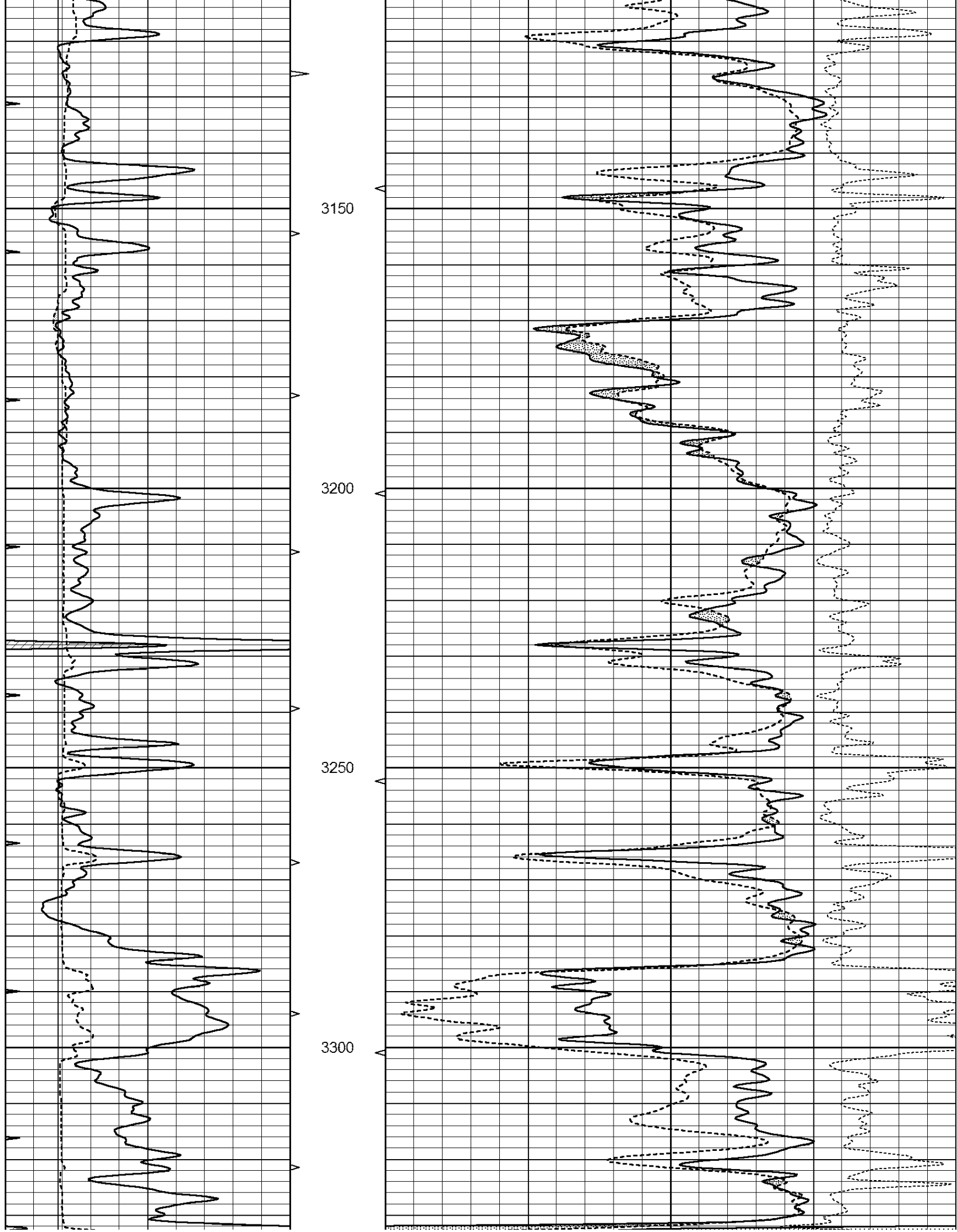
Comments

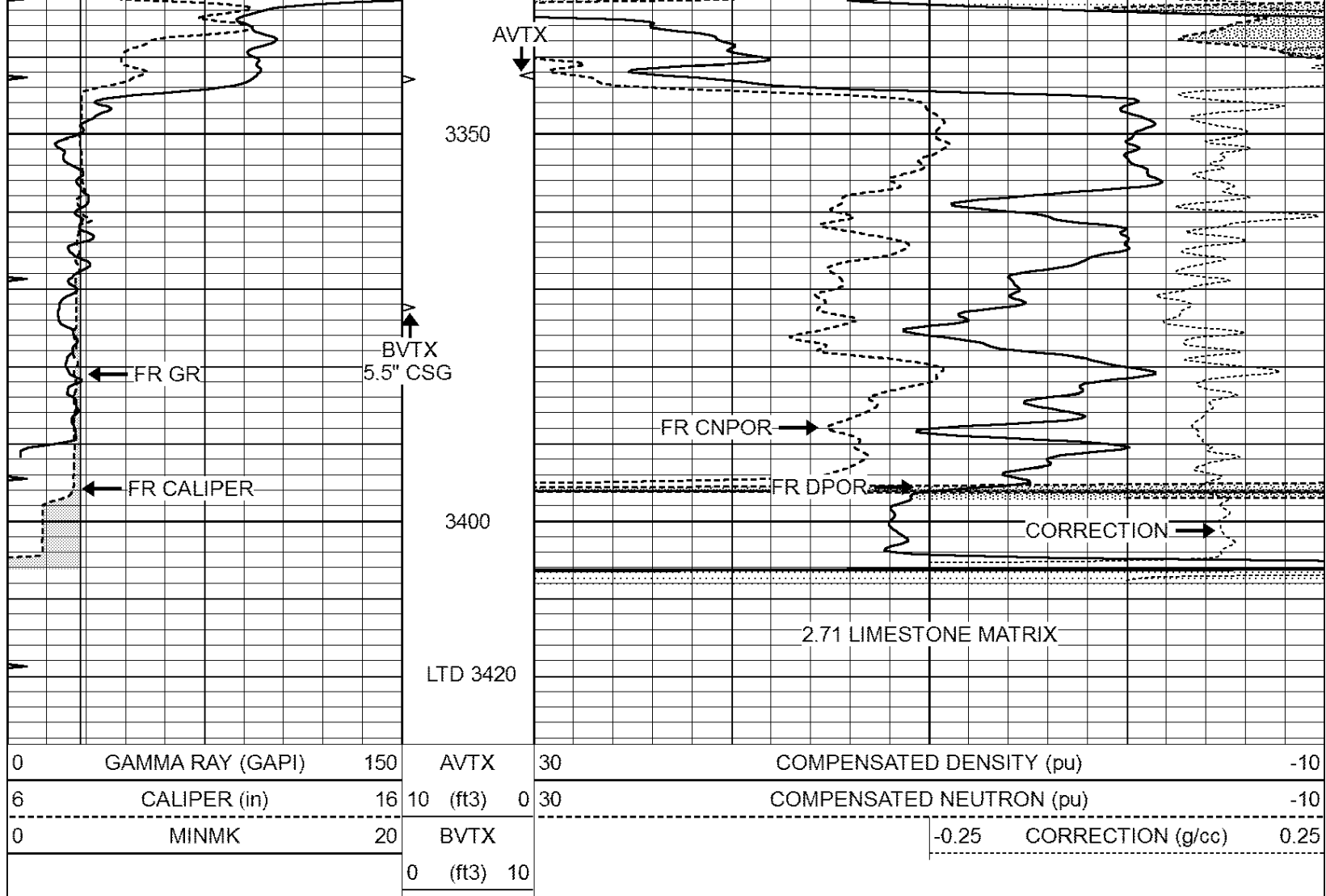
NABORS COMPLETION & PRODUCTION SERVICES CO.
785 (628 - 6395)
THANK YOU FOR YOUR BUSINESS
DIRECTIONS : RUSSELL, KS. - SOUTH 9 MILES (RADKE SIGHN) MICHAELS RD. - EAST 6 3/4 - SOUTH INTO

0	GAMMA RAY (GAPI)	150	AVTX	30	COMPENSATED DENSITY (pu)	-10
6	CALIPER (in)	16	10 (ft3)	0 30	COMPENSATED NEUTRON (pu)	-10
0	MINMK	20	BVTX		-0.25 CORRECTION (g/cc)	0.25
			0 (ft3)	10		









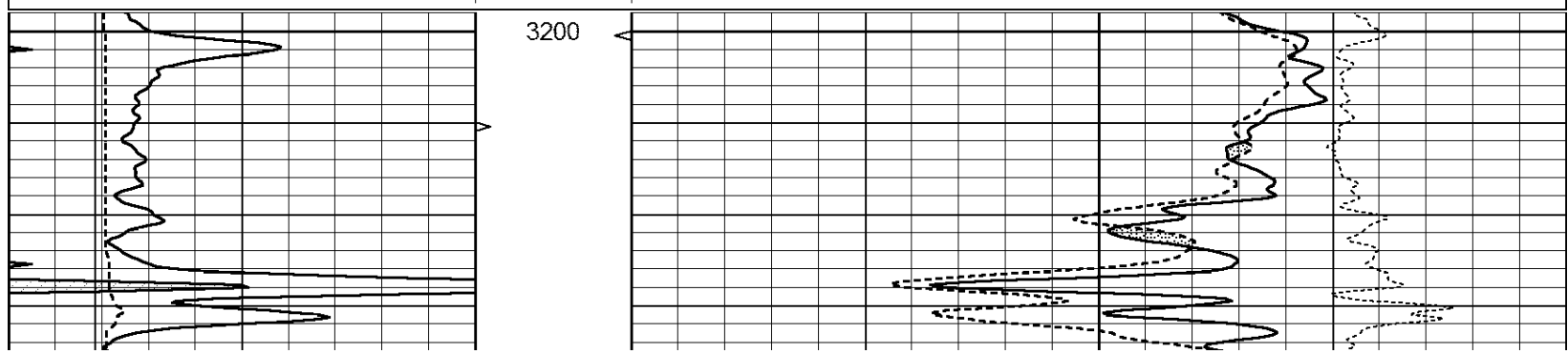
0	GAMMA RAY (GAPI)	150	AVTX	30	COMPENSATED DENSITY (pu)	-10
6	CALIPER (in)	16	10 (ft3)	0 30	COMPENSATED NEUTRON (pu)	-10
0	MINMK	20	BVTX		-0.25	CORRECTION (g/cc) 0.25
			0 (ft3)	10		

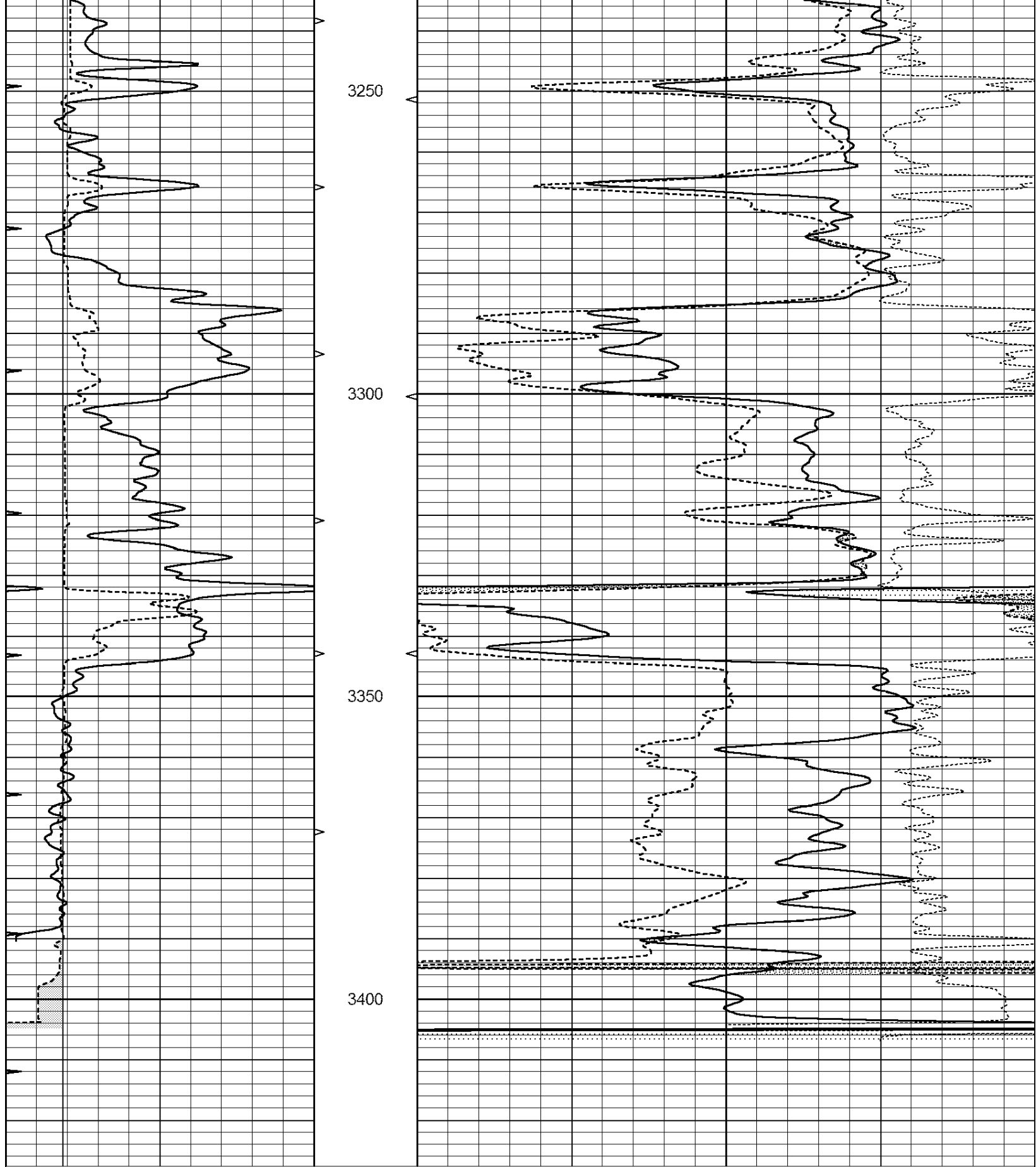


REPEAT SECTION

Database File: 26425ddn.db
 Dataset Pathname: pass2.4
 Presentation Format: _den_neu
 Dataset Creation: Tue Dec 16 19:41:46 2014 by Calc Open-Cased 090629
 Charted by: Depth in Feet scaled 1:240

0	GAMMA RAY (GAPI)	150	AVTX	30	COMPENSATED DENSITY (pu)	-10
6	CALIPER (in)	16	10 (ft3)	0 30	COMPENSATED NEUTRON (pu)	-10
0	MINMK	20	BVTX		-0.25	CORRECTION (g/cc) 0.25
			0 (ft3)	10		





0	GAMMA RAY (GAPI)	150	AVTX	30	COMPENSATED DENSITY (pu)	-10
6	CALIPER (in)	16	10 (ft3)	0	COMPENSATED NEUTRON (pu)	-10
0	MINMK	20	BVTX		-0.25	CORRECTION (g/cc)
		0	(ft3)	10		0.25

Calibration Report

Database File: 26425ddn.db
 Dataset Pathname: pass3.1
 Dataset Creation: Tue Dec 16 20:04:29 2014 by Calc Open-Cased 090629

Dual Induction Calibration Report

Serial-Model: PROBE7-DILG
 Surface Cal Performed: Fri Dec 05 11:16:41 2014
 Downhole Cal Performed: Sat Jan 19 19:51:38 2013
 After Survey Verification Performed: Sat Jan 19 19:51:38 2013

Surface Calibration

Loop:	Readings			References			Results	
	Air	Loop		Air	Loop		m	b
Deep	0.793	0.790	V	0.000	400.000	mmho/m	520.000	12.000
Medium	0.992	1.002	V	0.000	464.000	mmho/m	570.000	-32.000
Internal:	Zero	Cal		Zero	Cal		m	b
Deep	0.041	0.642	V	0.000	400.000	mmho/m	664.874	-27.011
Medium	0.035	0.802	V	0.000	464.000	mmho/m	604.936	-21.367

Downhole Calibration

	Readings			References			Results	
	Zero	Cal		Zero	Cal		m'	b'
Deep	135384.000	27094.500	mmho/m	135400.000	27082.400	mmho/m	1.000	-19.259
Medium	-47330.100	-9381.740	mmho/m	-47327.100	-9389.280	mmho/m	1.000	-10.154
LL3		7.322	V		1400.000	Ohm-m		
		0.038	V		20.000	Ohm-m		
		-7.273	V		4000.000	mmho-m		

After Survey Verification

	Readings			Targets			Results	
	Zero	Cal		Zero	Cal		m'	b'
Deep	0.000	0.000	mmho/m	135384.000	27094.500	mmho/m	1.000	0.000
Medium	0.000	0.000	mmho/m	-47330.100	-9381.740	mmho/m	1.000	0.000
LL3		0.000	Ohm-m		1400.000	Ohm-m		
		0.000	Ohm-m		20.000	Ohm-m		
		0.000	mmho-m		4000.000	mmho-m		

Compensated Density Calibration Report

Serial-Model: GEAR5-GEARHART
 Source / Verifier: 147 / 147
 Master Calibration Performed: Tue Dec 16 16:19:09 2014
 Before Survey Verification Performed:
 After Survey Verification Performed:

Master Calibration

	Density		Far Detector	Near Detector	
Magnesium	1.710	g/cc	894.82	531.60	cps
Aluminum	2.600	g/cc	199.46	368.39	cps
Spine Angle = 76.27			Density/Spine Ratio = 0.576		
	Size		Reading		
Small Ring	8.20	in	1.64	V	
Large Ring	14.00	in	2.93	V	

Before Survey Verification

Before Survey Verification

Target

Measured

g/cc
g/cc
g/cc

g/cc
g/cc
g/cc

After Survey Verification

Target

Measured

g/cc
g/cc
g/cc

g/cc
g/cc
g/cc

Compensated Neutron Calibration Report

Serial Number:
Tool Model:

080620
Probe

PRE-SURVEY VERIFICATION

Detector

Readings

Measured

Target

Short Space
Long Space

cps
cps

pu

pu

POST-SURVEY VERIFICATION

Detector

Readings

Measured

Target

Short Space
Long Space

cps
cps

pu

pu

Gamma Ray Calibration Report

Serial Number:
Tool Model:
Performed:

46001
Probe1
Mon Nov 24 09:45:18 2014

Calibrator Value:

1.0

GAPI

Background Reading:
Calibrator Reading:

0.0
1.0

cps
cps

Sensitivity:

0.2600

GAPI/cps