



**COMPLETION
& PRODUCTION
SERVICES CO.**

**DUAL
INDUCTION
LOG**

Company MAI OIL OPERATIONS, INC.
Well BERRY #6
Field TRAPP
County RUSSELL State KANSAS

Company MAI OIL OPERATIONS, INC.
Well BERRY #6
Field TRAPP
County RUSSELL
State KANSAS

Location: API #: 15-167-24023-00-00
1675' FNL & 1260' FEL
SW - NW - SE - NE
SEC 33 TWP 15S RGE 13W
Permanent Datum GROUND LEVEL Elevation 1894
Log Measured From KELLY BUSHING 8' A.G.L.
Drilling Measured From KELLY BUSHING
Other Services
CNL/CDL
MEL
Elevation
K.B. 1902
D.F. 1900
G.L. 1894

Date	12/16/14		
Run Number	ONE		
Depth Driller	3420		
Depth Logger	3420		
Bottom Logged Interval	3418		
Top Log Interval	00		
Casing Driller	8 5/8 @ 515'		
Casing Logger	514'		
Bit Size	7.875		
Type Fluid in Hole	CHEMICAL MUD		
Density / Viscosity	9.3/55	CHLORIDES 3,000 PPM	
pH / Fluid Loss	9.0/8.2		
Source of Sample	FLOWLINE		
Rm @ Meas. Temp	0.90 @ 70F		
Rmf @ Meas. Temp	0.68 @ 70F		
Rmc @ Meas. Temp	1.09 @ 70F		
Source of Rmf / Rmc	MEASURED		
Rm @ BHT	0.57 @ 110F		
Time Circulation Stopped	2 HOURS		
Time Logger on Bottom			
Maximum Recorded Temperature	110F		
Equipment Number	3802		
Location	HAYS, KS.		
Recorded By	IAN MABB		
Witnessed By	WYATT URBAN		

<<< Fold Here >>>

All interpretations are opinions based on inferences from electrical or other measurements and we cannot and do not guarantee the accuracy or correctness of any interpretation, and we shall not, except in the case of gross or willful negligence on our part, be liable or responsible for any loss, costs, damages, or expenses incurred or sustained by anyone resulting from any interpretation made by any of our officers, agents or employees. These interpretations are also subject to our general terms and conditions set out in our current Price Schedule.

Comments

NABORS COMPLETION & PRODUCTION SERVICES CO.
785 (628 - 6395)

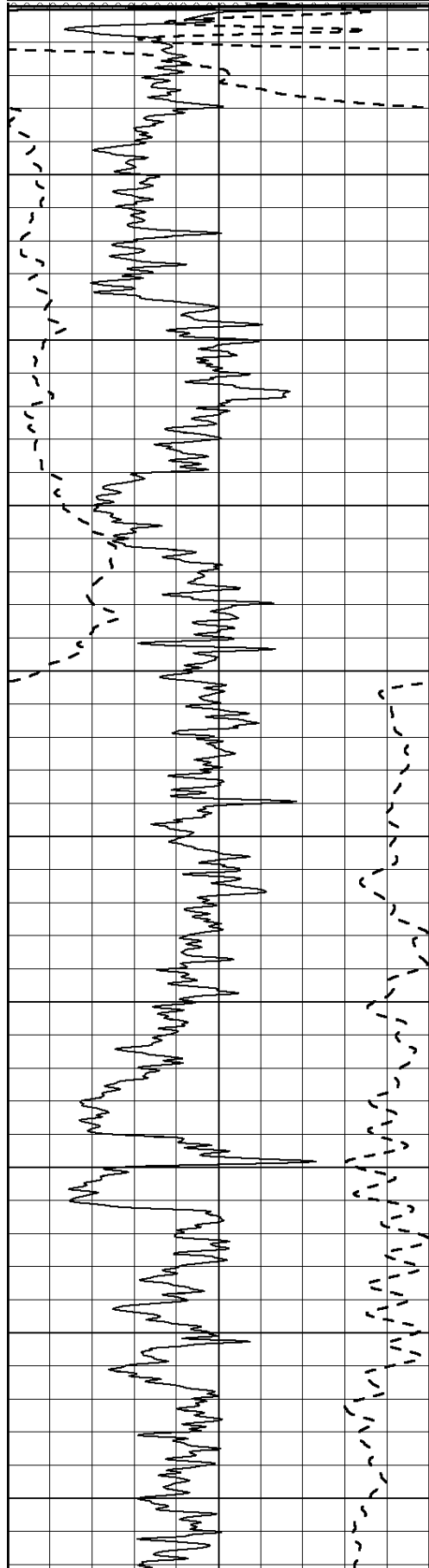
THANK YOU FOR YOUR BUSINESS

DIRECTIONS : RUSSELL, KS. - SOUTH 9 MILES (RADKE SIGHN) MICHAELS RD. - EAST 6 3/4 - SOUTH INTO

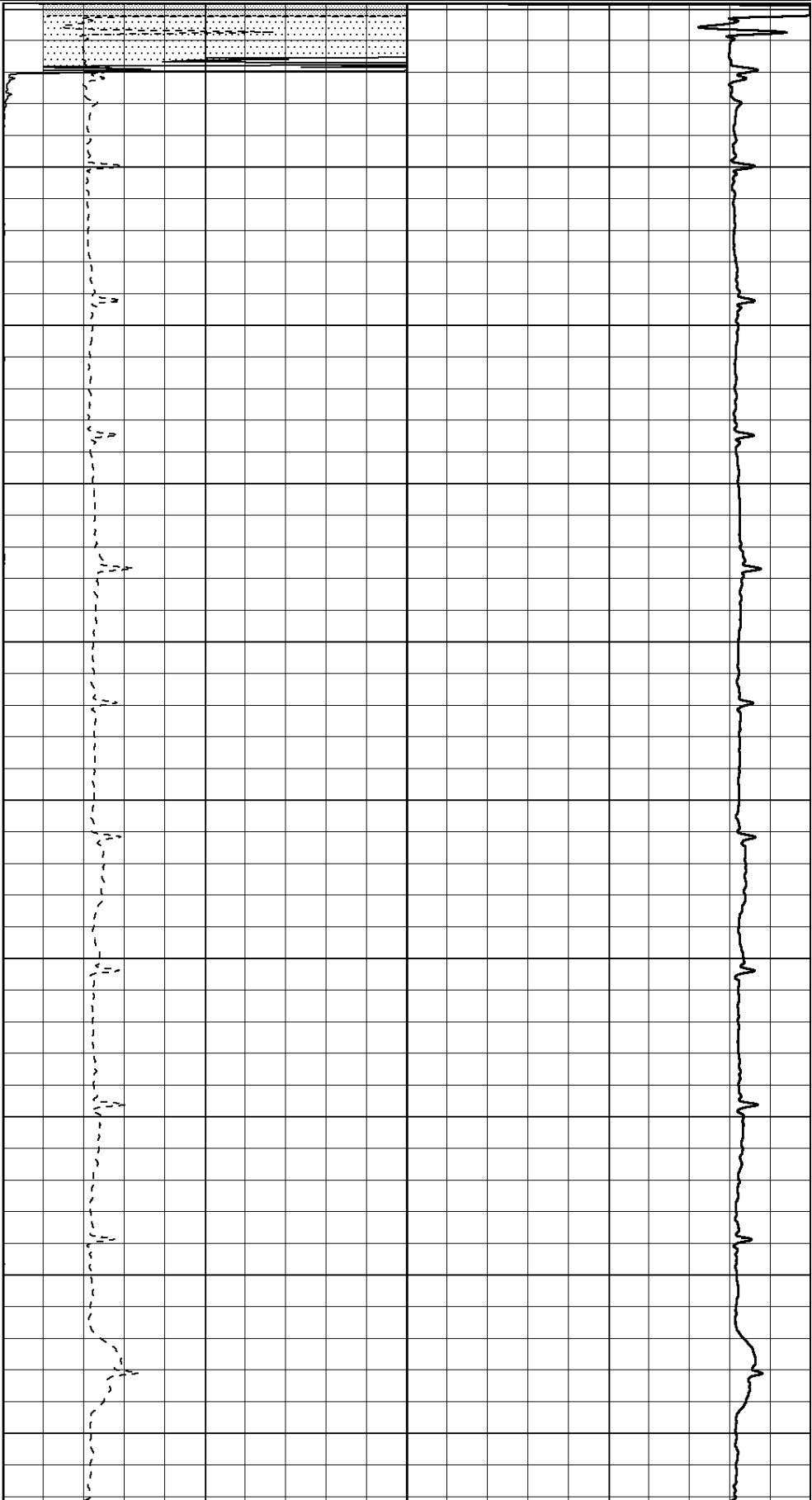
0	Gamma Ray (GAPI)	150
-100	SP (mV)	100

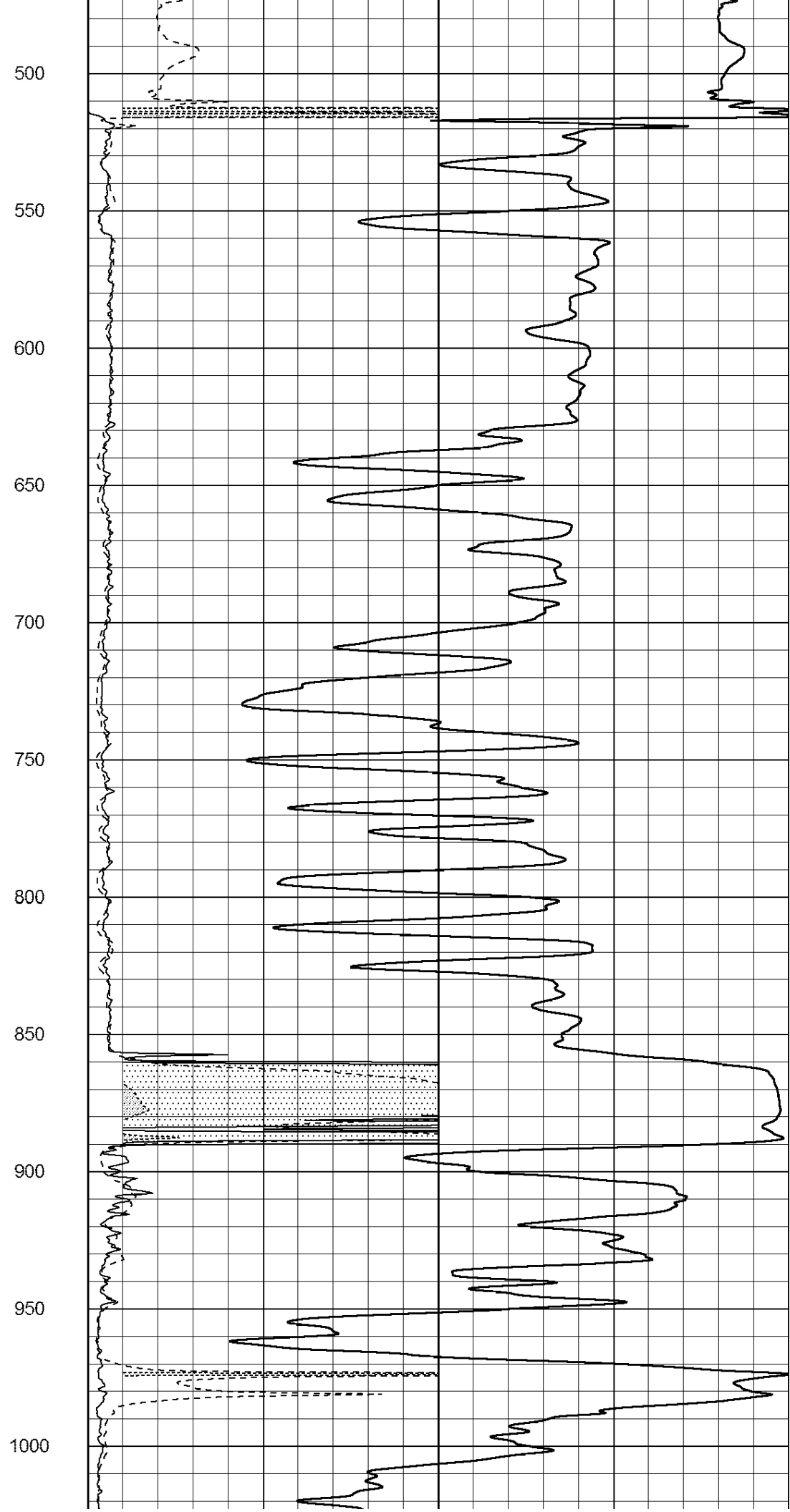
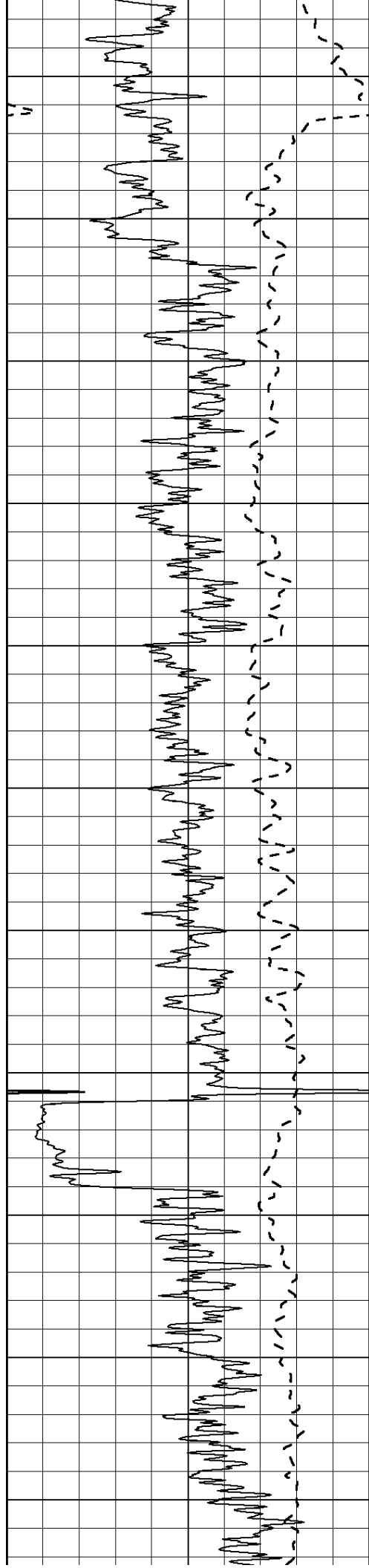
0	RLL3 (Ohm-m)	50
0	Deep Induction (Ohm-m)	50

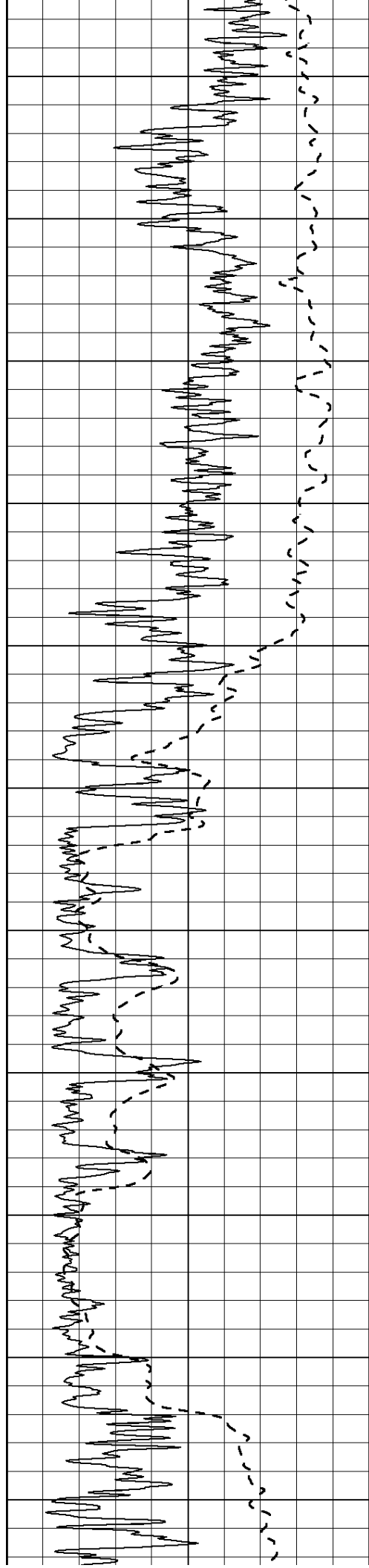
1000	CILD (mmho/m)	0
50	RILD X10 (Ohm-m)	500
50	RLL3 X10 (Ohm-m)	500



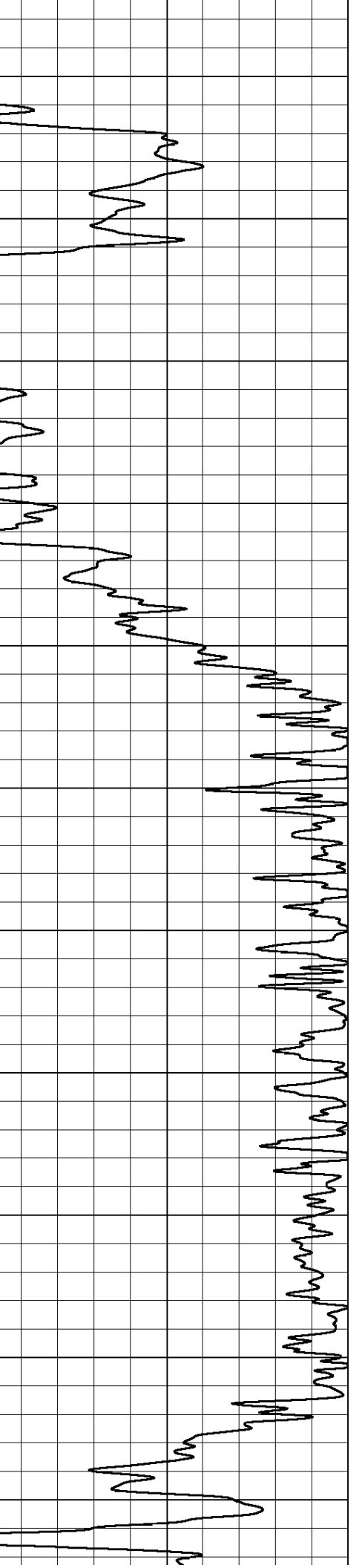
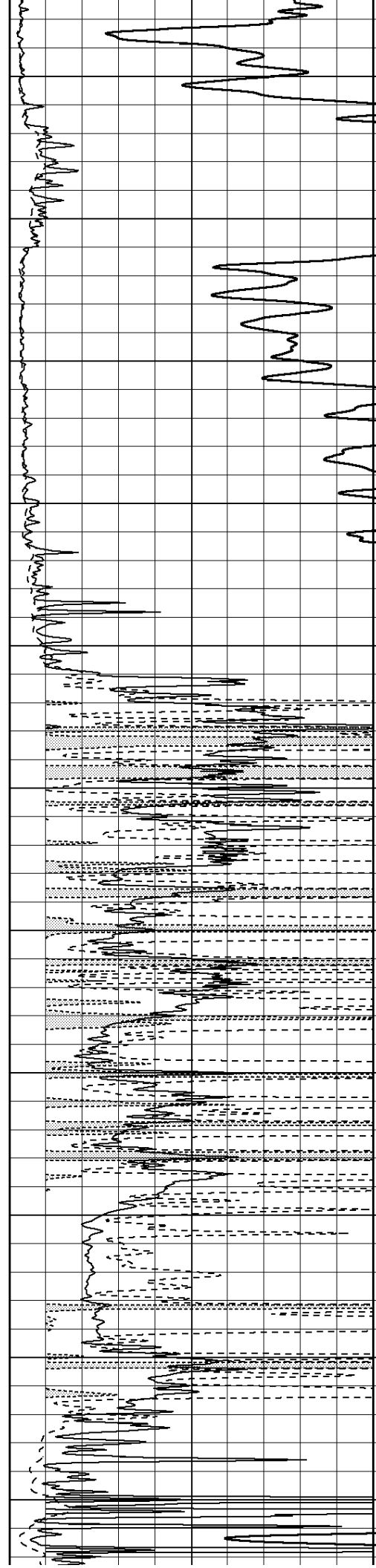
0
50
100
150
200
250
300
350
400
450

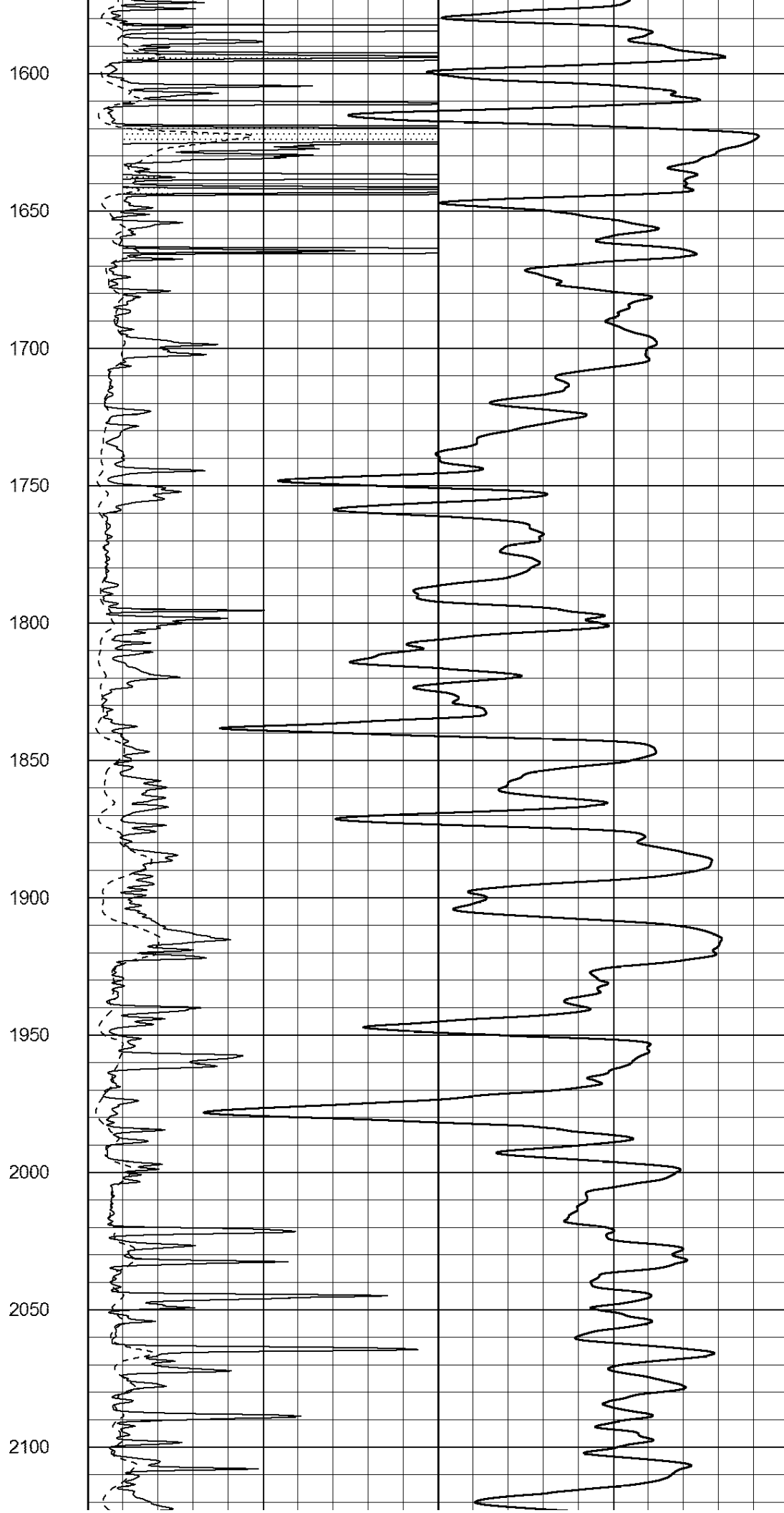
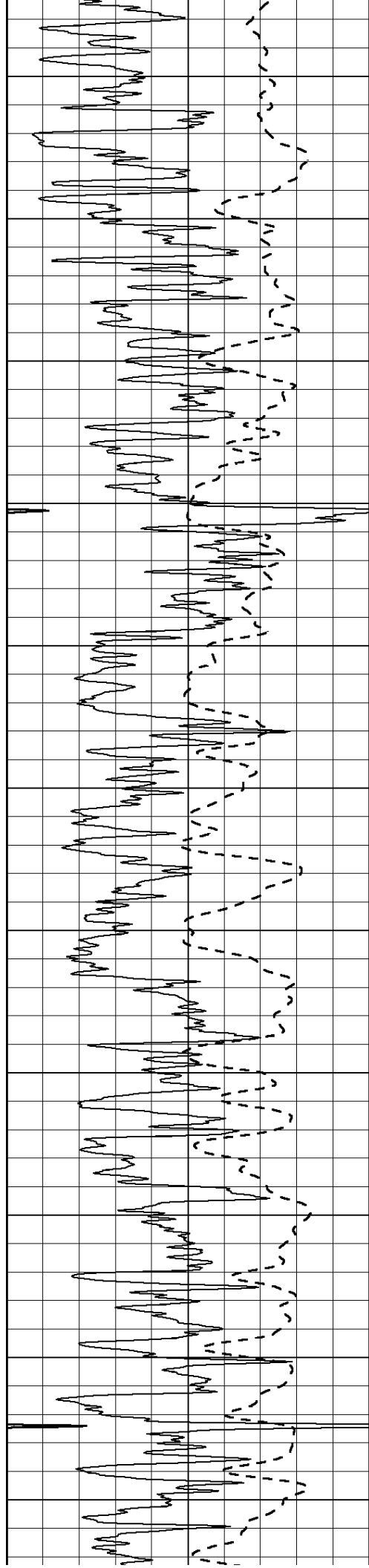


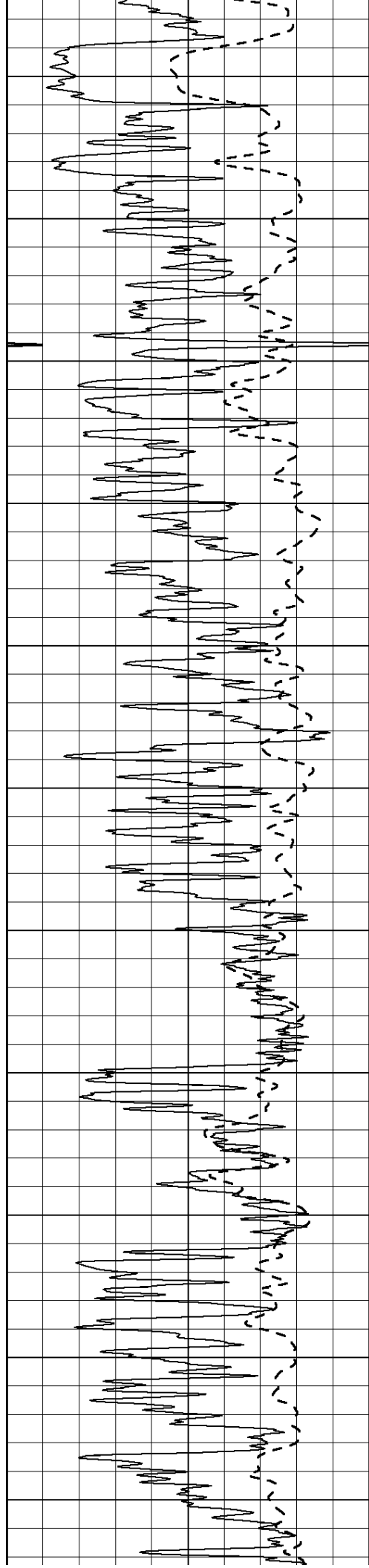




1050
1100
1150
1200
1250
1300
1350
1400
1450
1500
1550







2150

2200

2250

2300

2350

2400

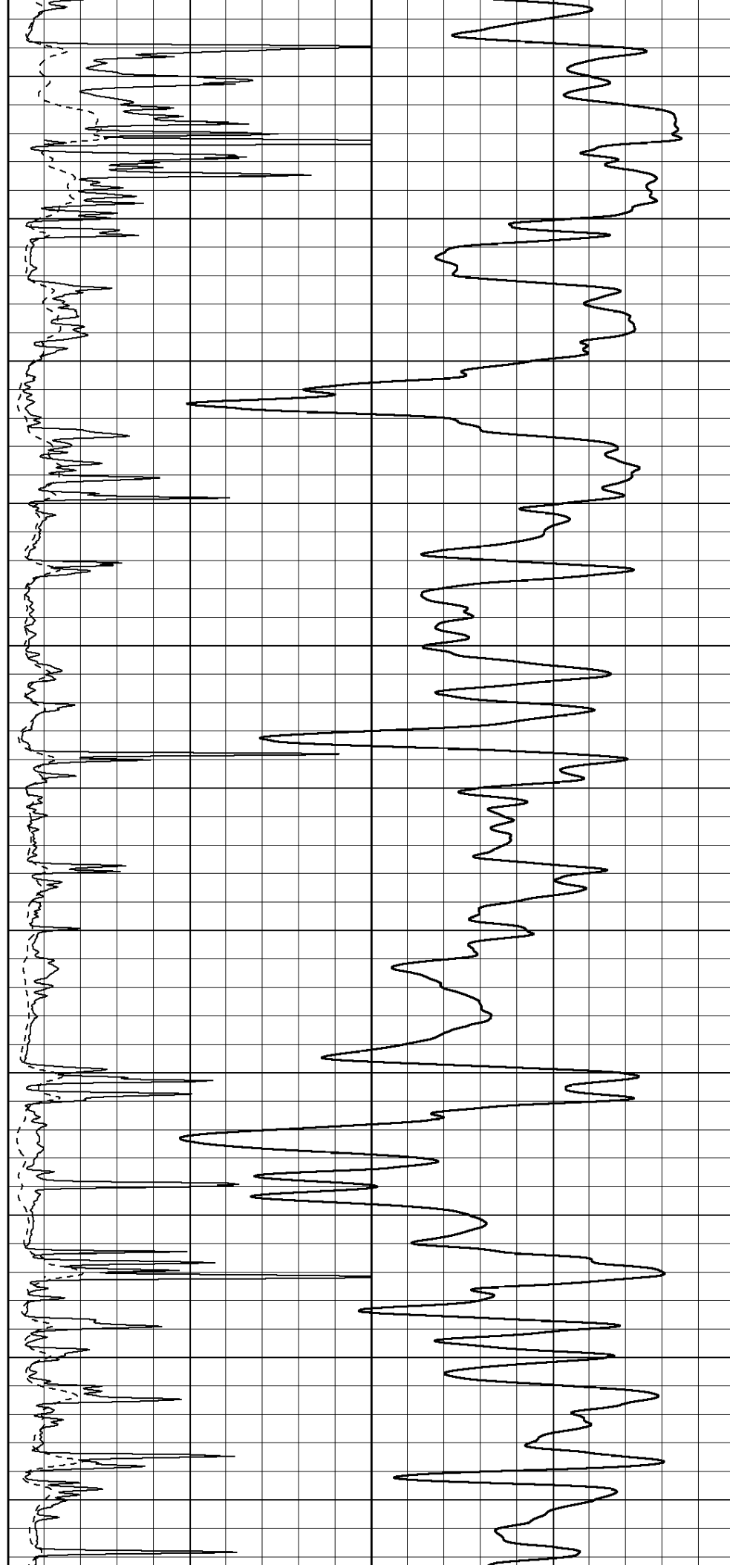
2450

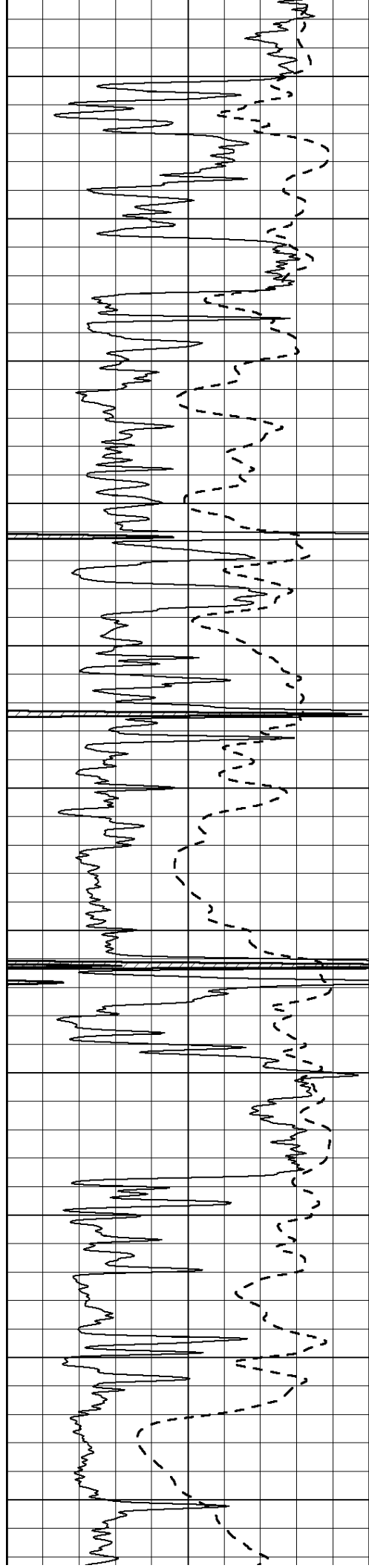
2500

2550

2600

2650





2700

2750

2800

2850

2900

2950

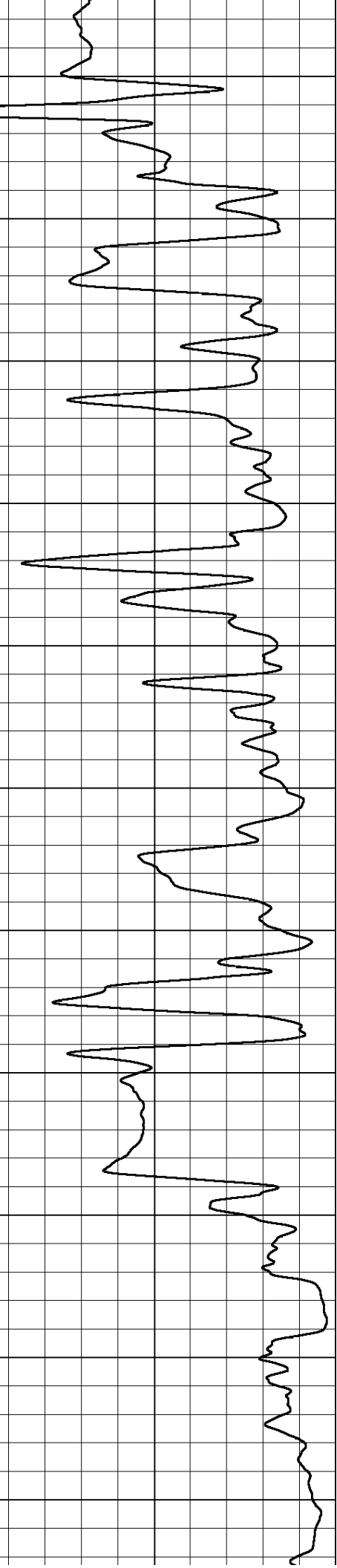
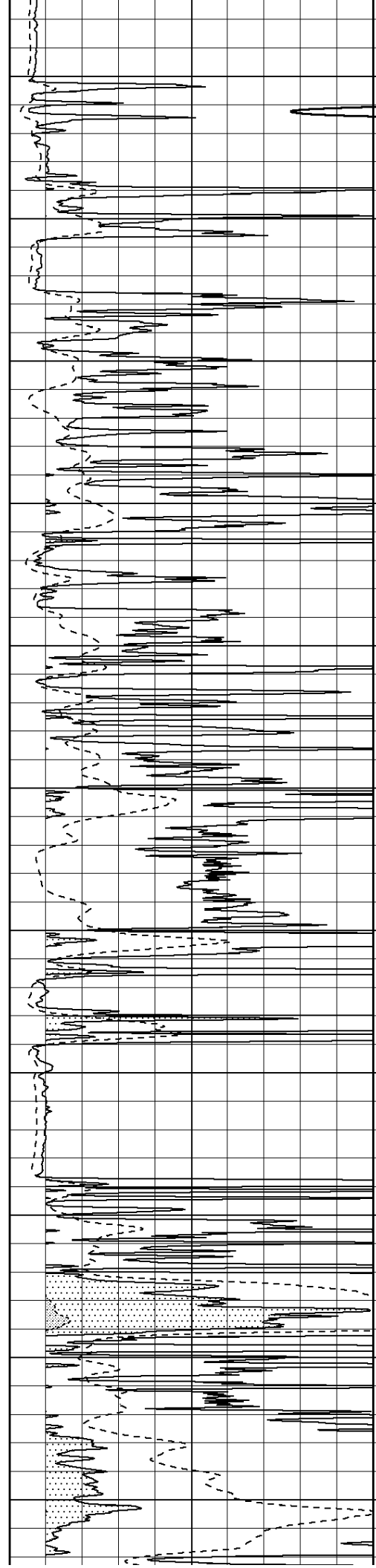
3000

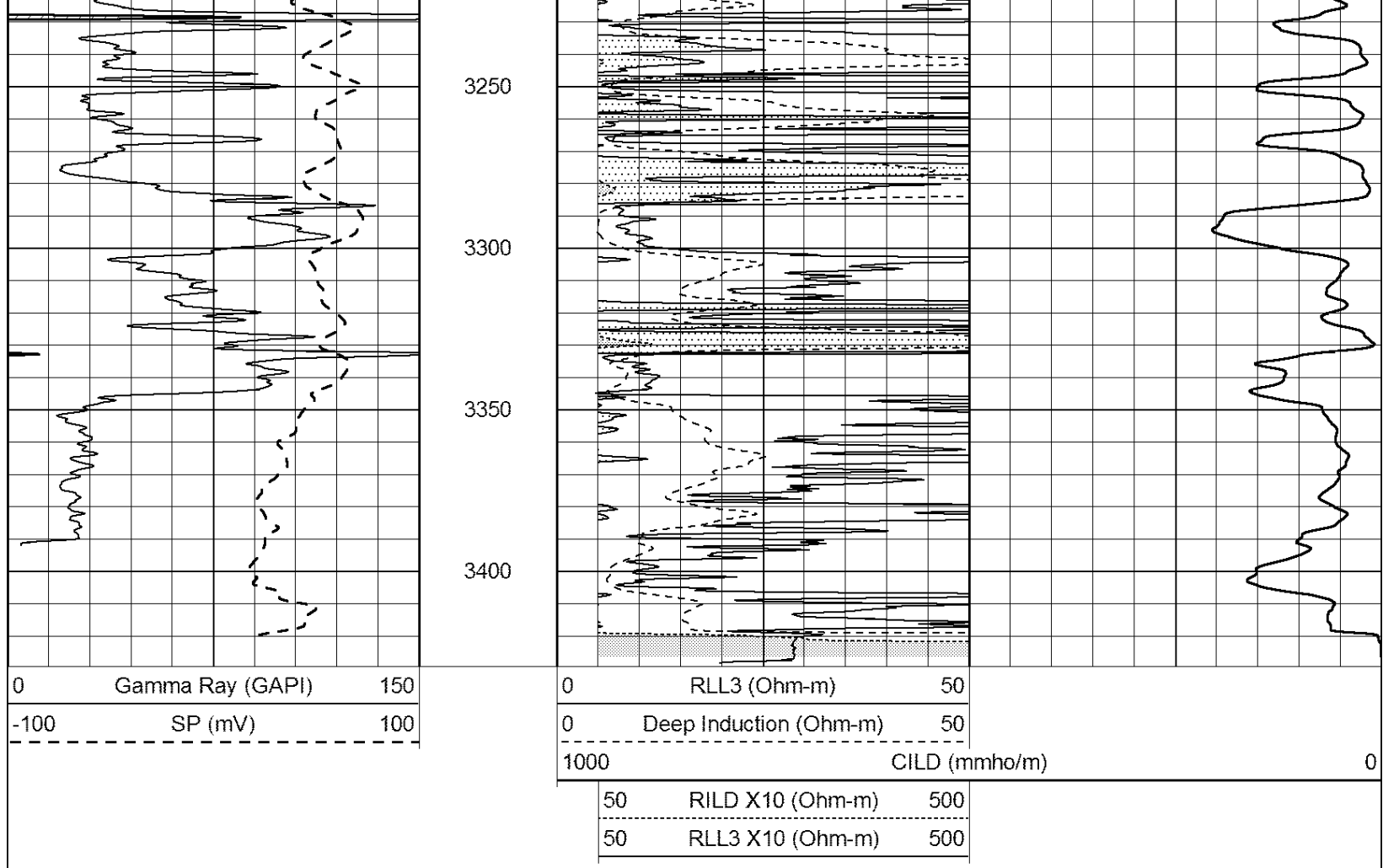
3050

3100

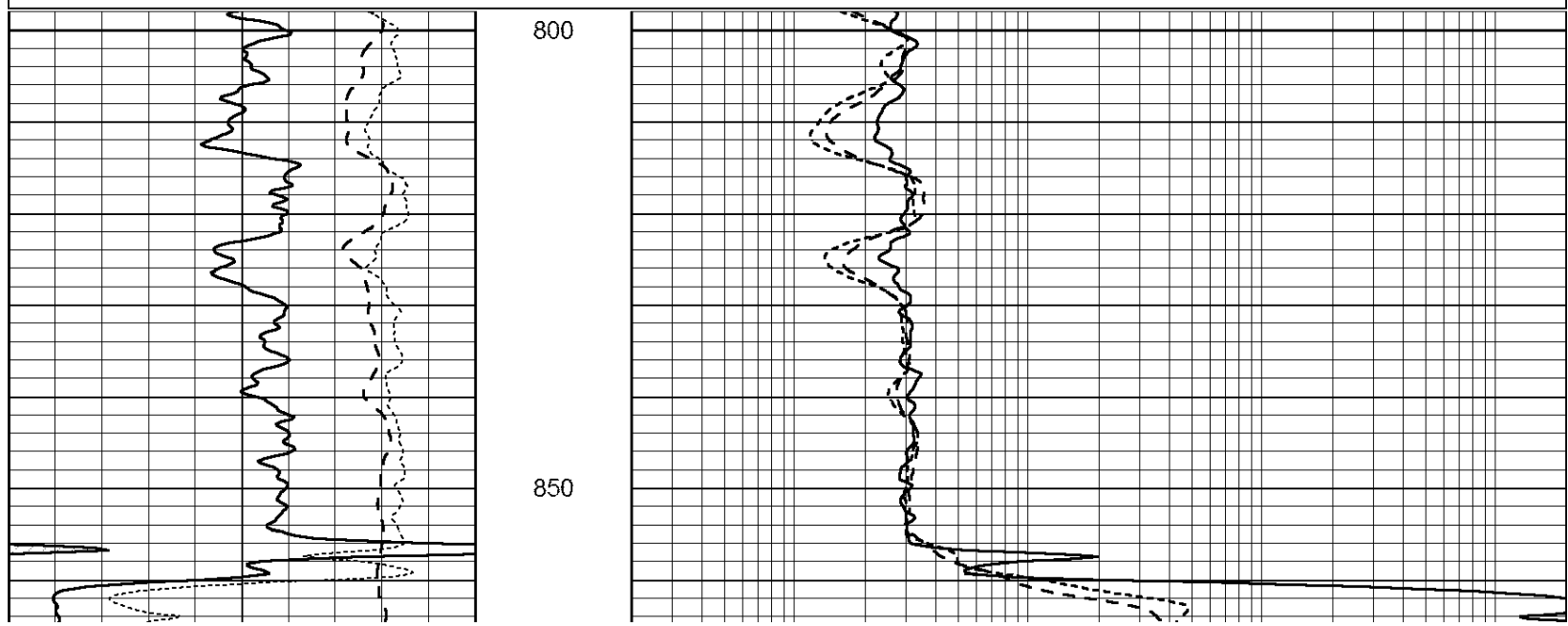
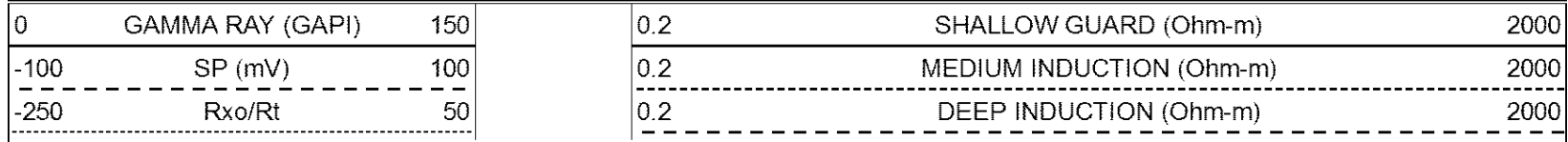
3150

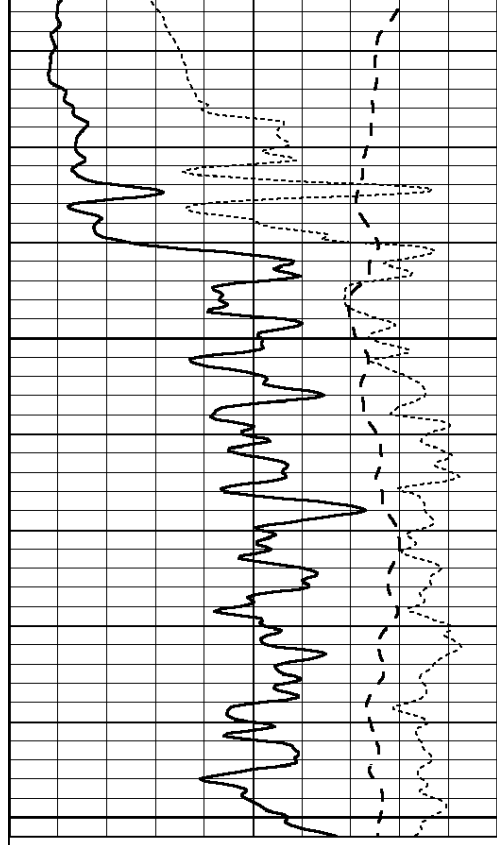
3200





Database File: 26425ddn.db
 Dataset Pathname: pass3.2
 Presentation Format: _dil
 Dataset Creation: Tue Dec 16 20:33:20 2014 by Calc Open-Cased 090629
 Charted by: Depth in Feet scaled 1:240

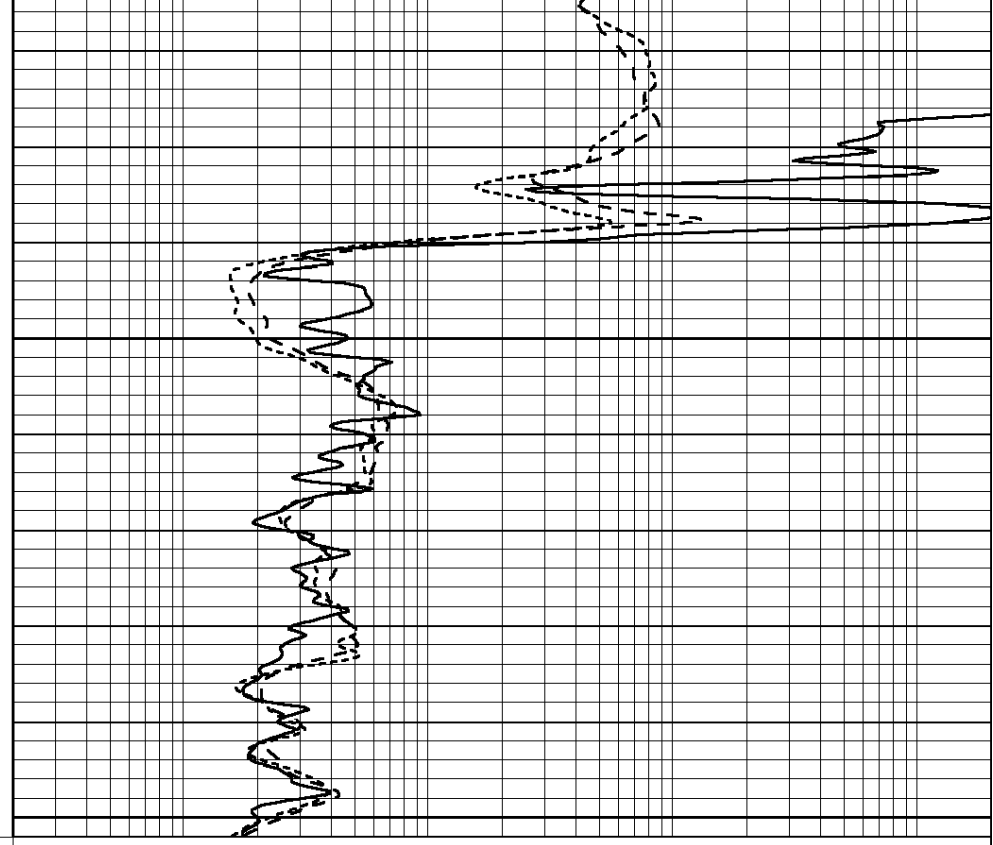




0	GAMMA RAY (GAPI)	150
-100	SP (mV)	100
-250	Rxo/Rt	50

900

950

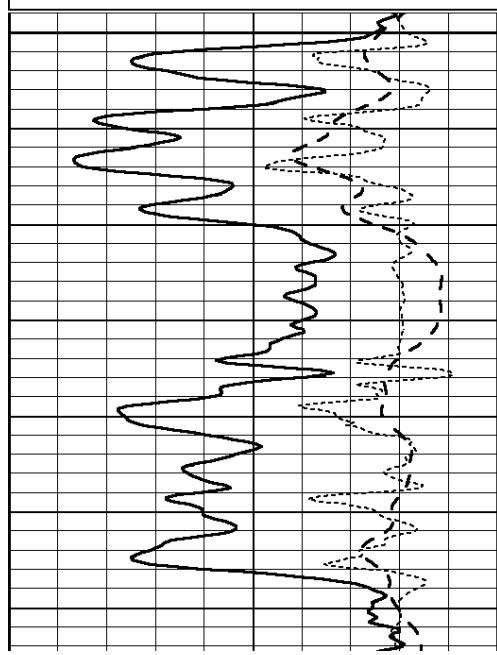


0.2	SHALLOW GUARD (Ohm-m)	2000
0.2	MEDIUM INDUCTION (Ohm-m)	2000
0.2	DEEP INDUCTION (Ohm-m)	2000

Database File: 26425ddn.db
 Dataset Pathname: pass3.1
 Presentation Format: _dil
 Dataset Creation: Tue Dec 16 20:04:29 2014 by Calc Open-Cased 090629
 Charted by: Depth in Feet scaled 1:240

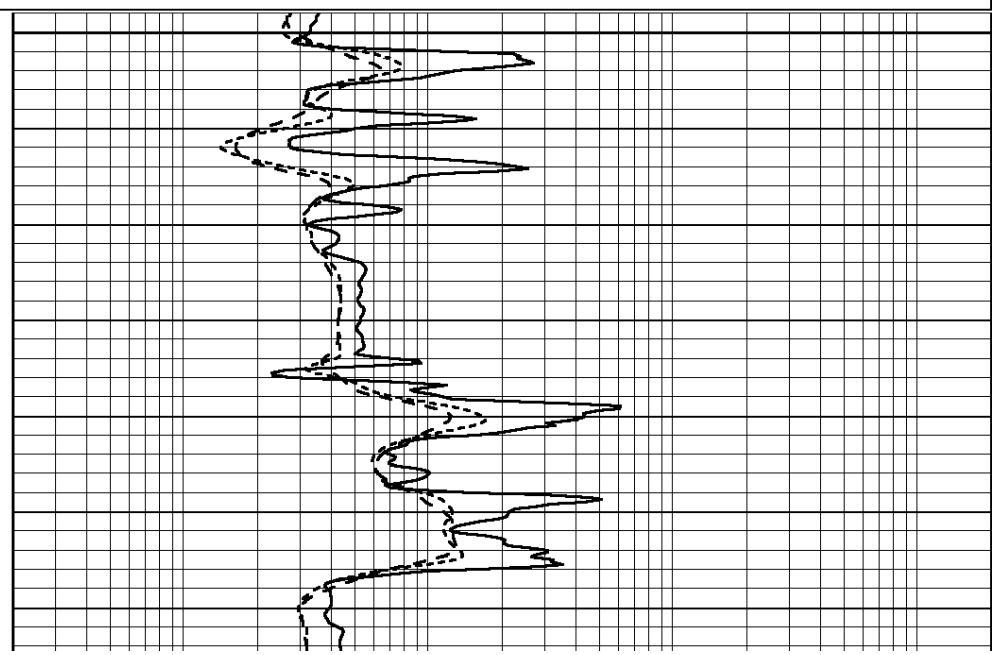
0	GAMMA RAY (GAPI)	150
-100	SP (mV)	100
-250	Rxo/Rt	50

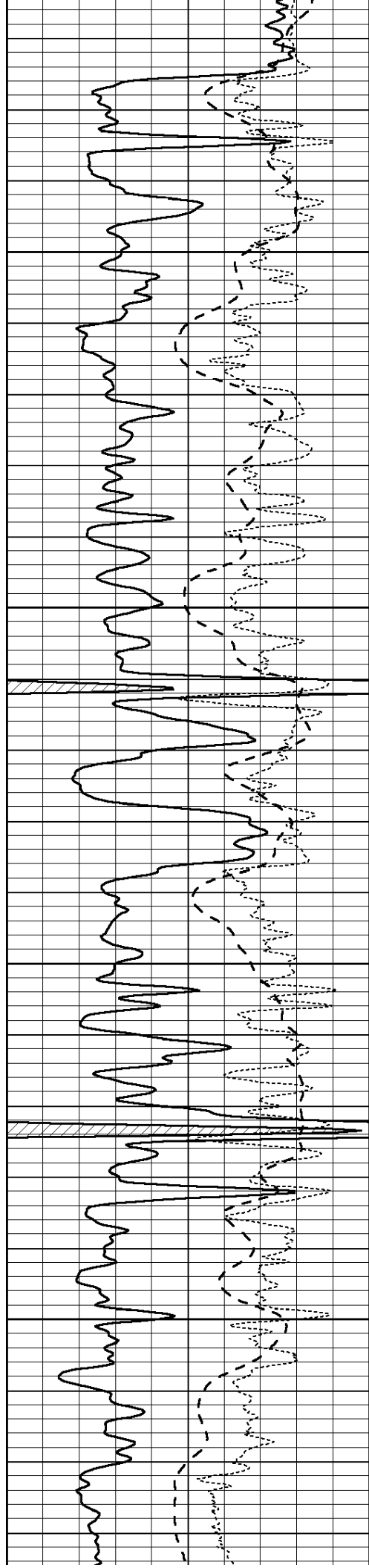
0.2	SHALLOW GUARD (Ohm-m)	2000
0.2	MEDIUM INDUCTION (Ohm-m)	2000
0.2	DEEP INDUCTION (Ohm-m)	2000



2700

2750



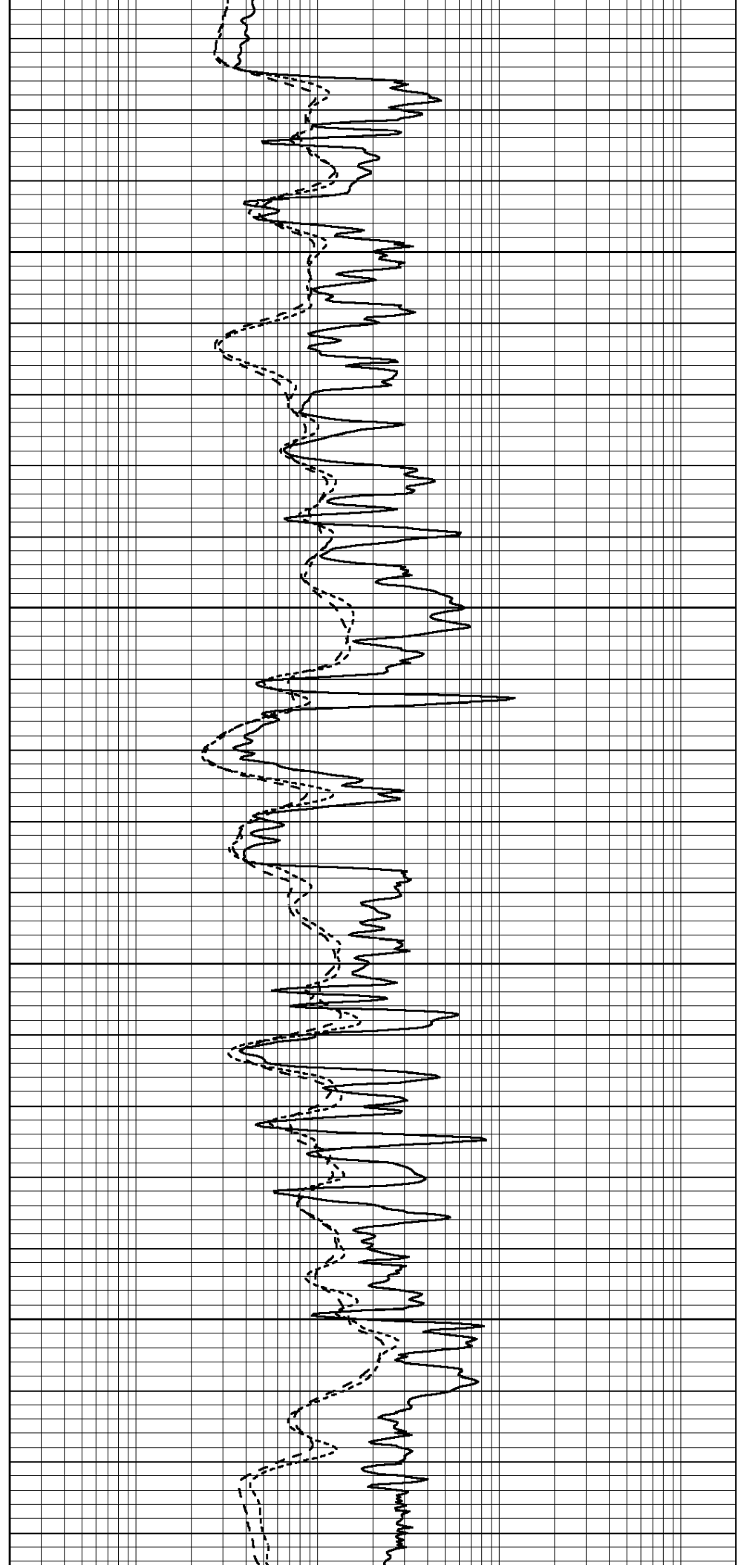


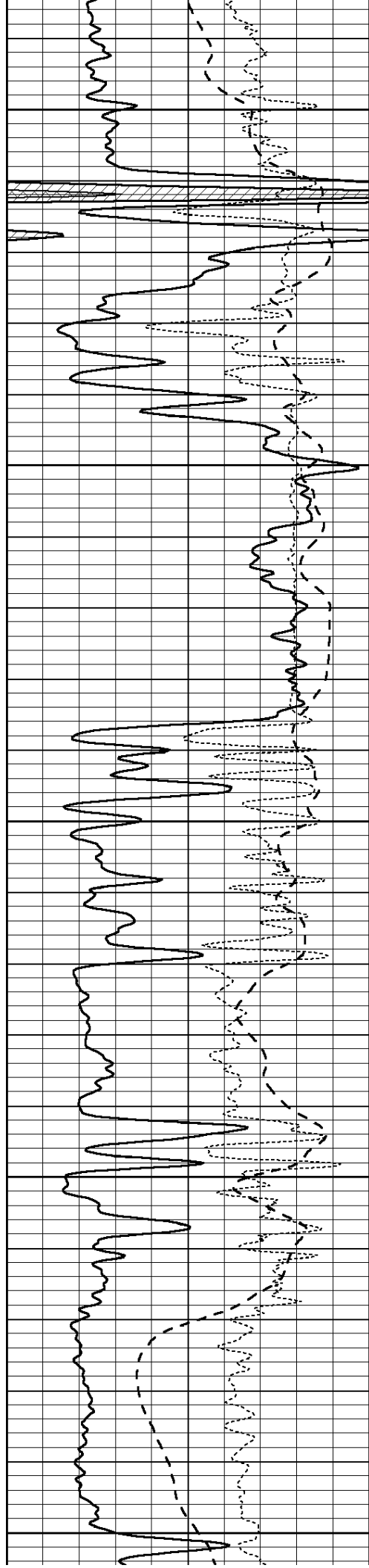
2800

2850

2900

2950





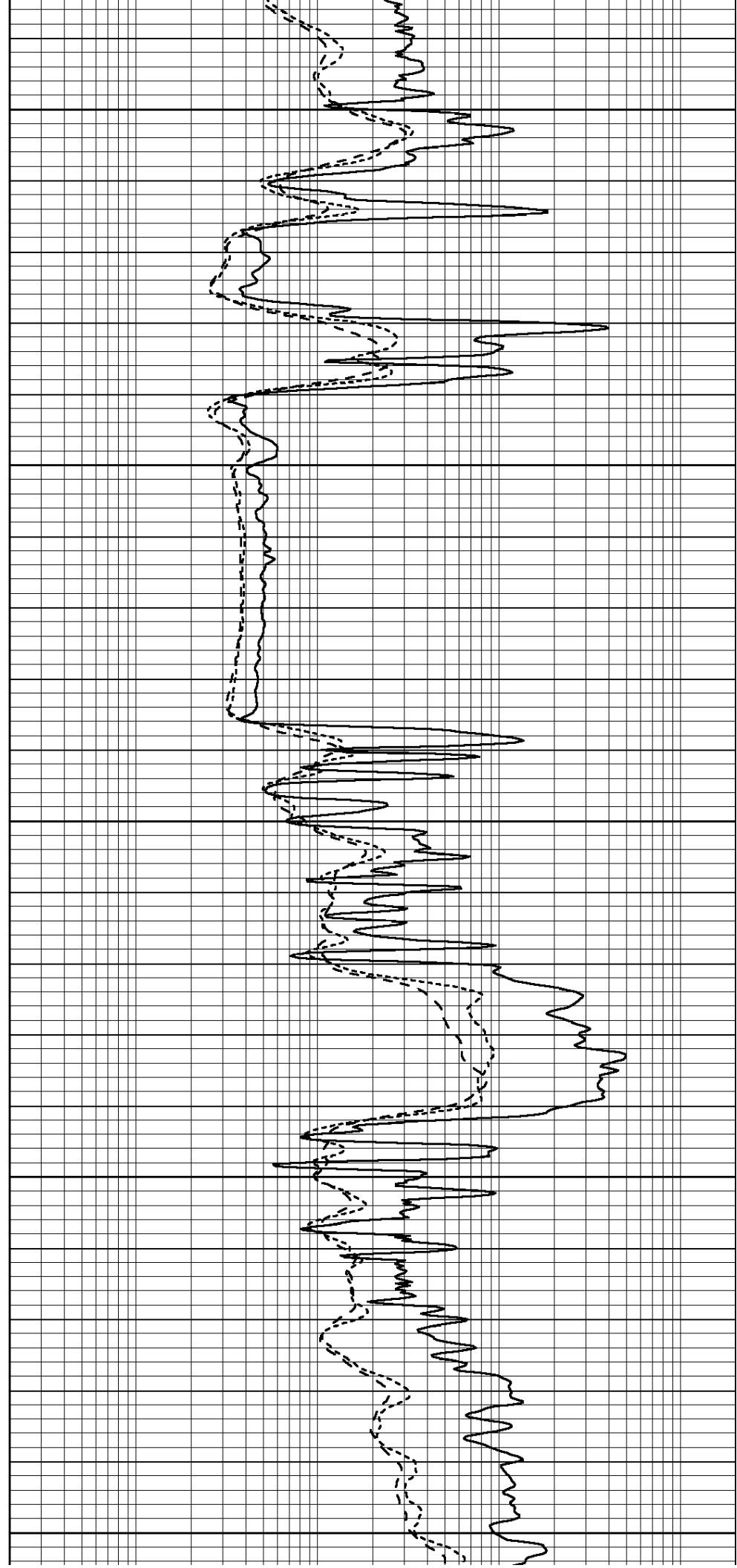
3000

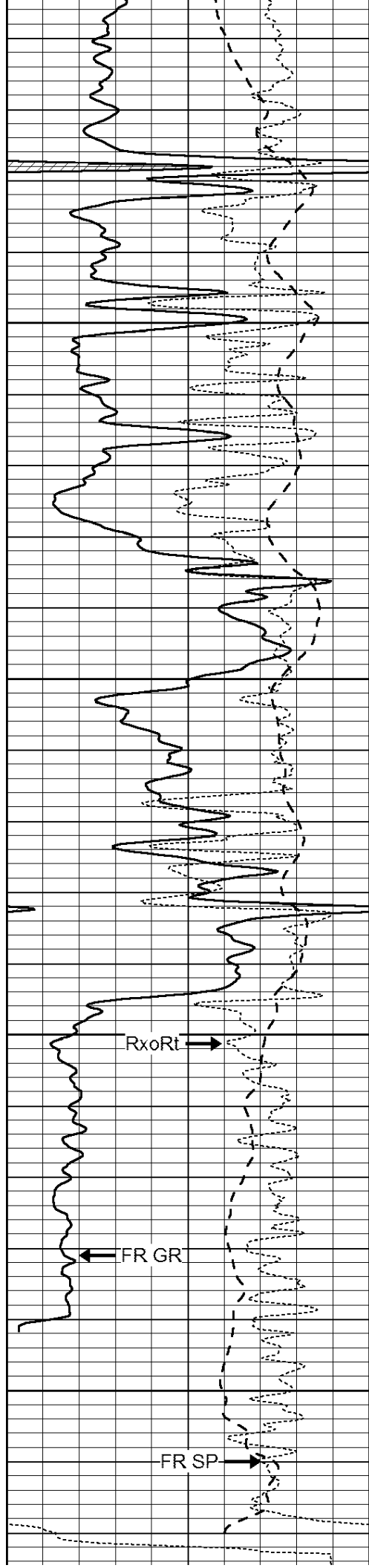
3050

3100

3150

3200





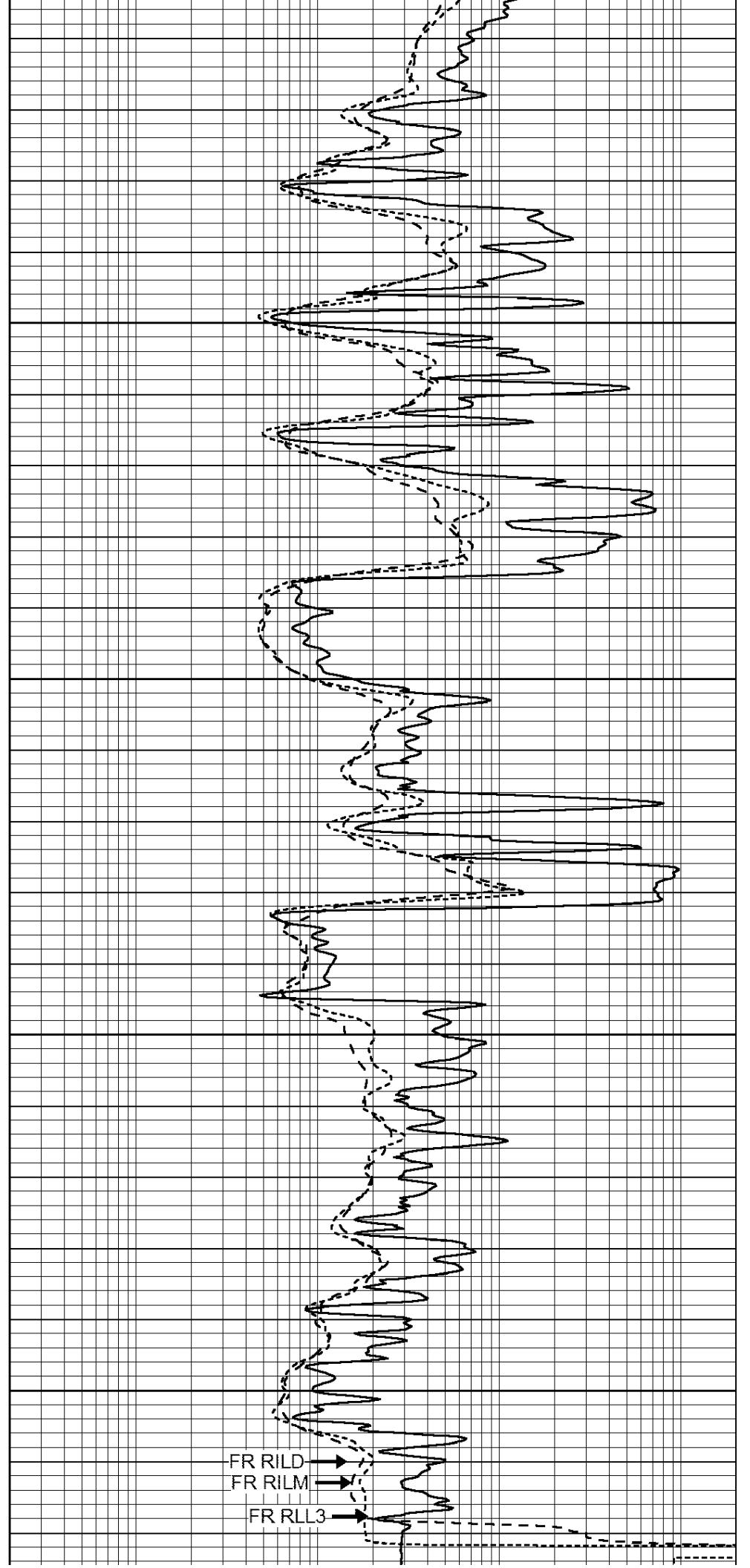
3250

3300

3350

3400

LTD 3420



0	GAMMA RAY (GAPI)	150
-100	SP (mV)	100
-250	Rxo/Rt	50

0.2	SHALLOW GUARD (Ohm-m)	2000
0.2	MEDIUM INDUCTION (Ohm-m)	2000
0.2	DEEP INDUCTION (Ohm-m)	2000

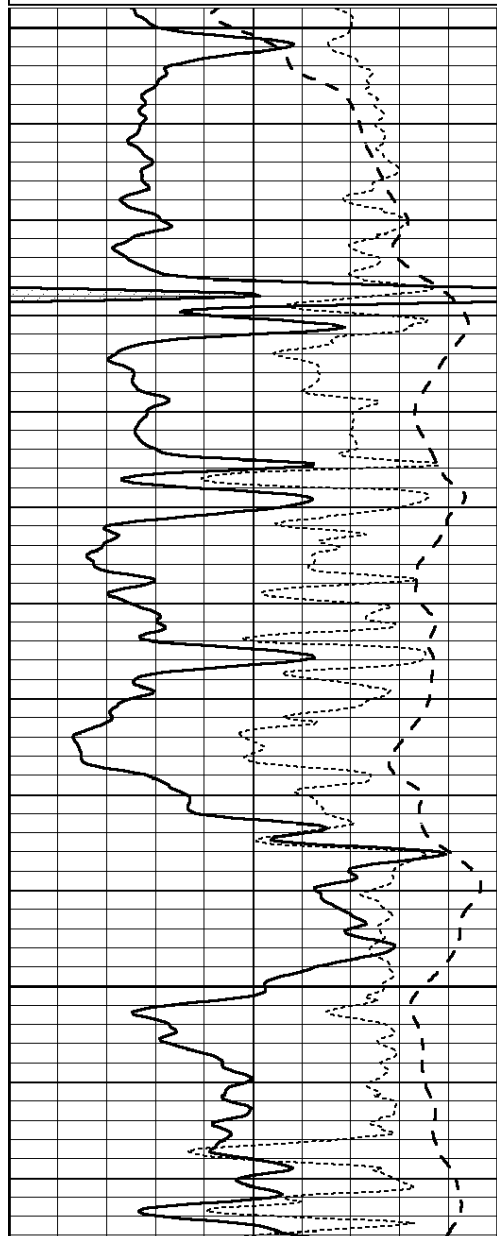


REPEAT SECTION

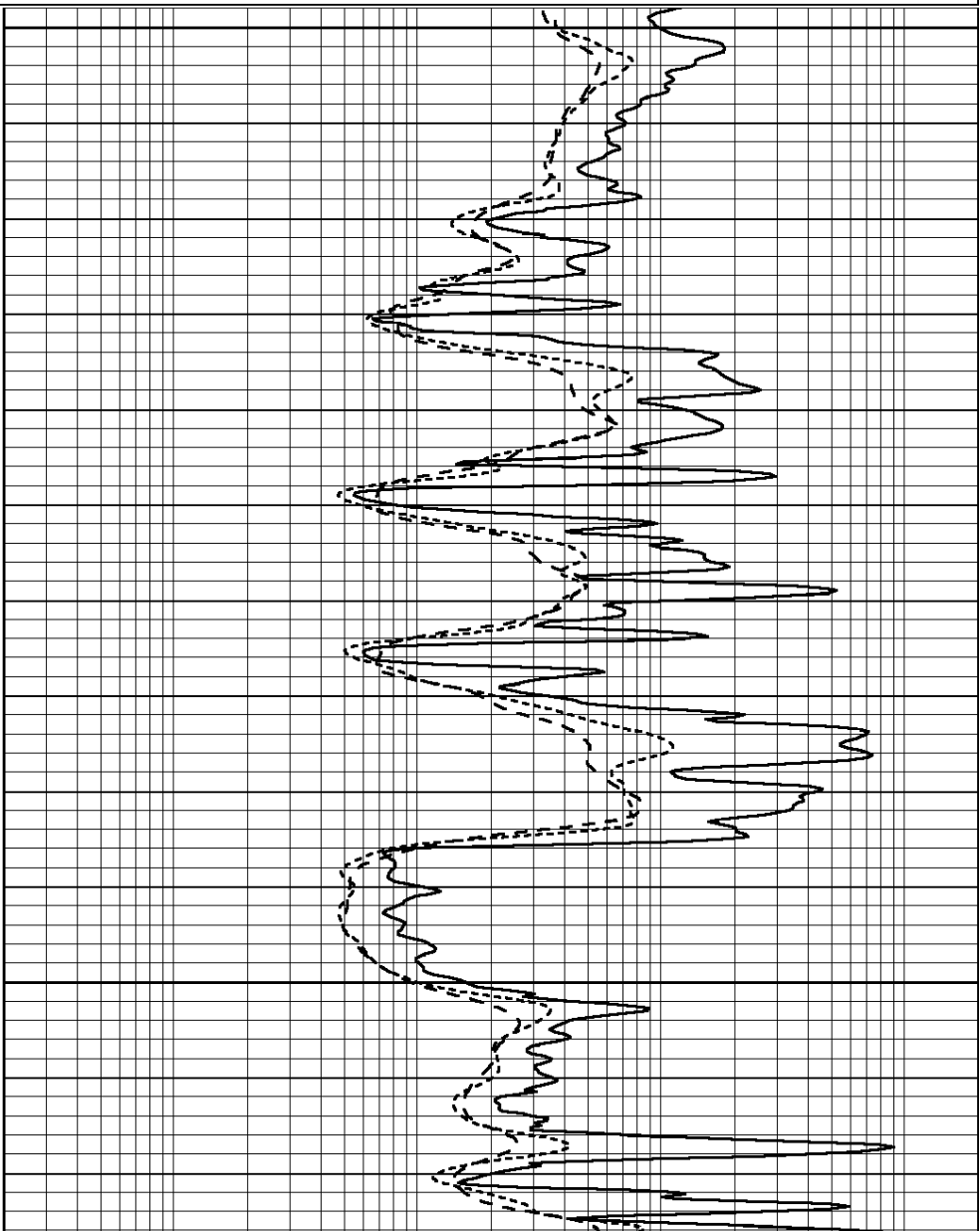
Database File: 26425ddn.db
 Dataset Pathname: pass2.4
 Presentation Format: _dil
 Dataset Creation: Tue Dec 16 19:41:46 2014 by Calc Open-Cased 090629
 Charted by: Depth in Feet scaled 1:240

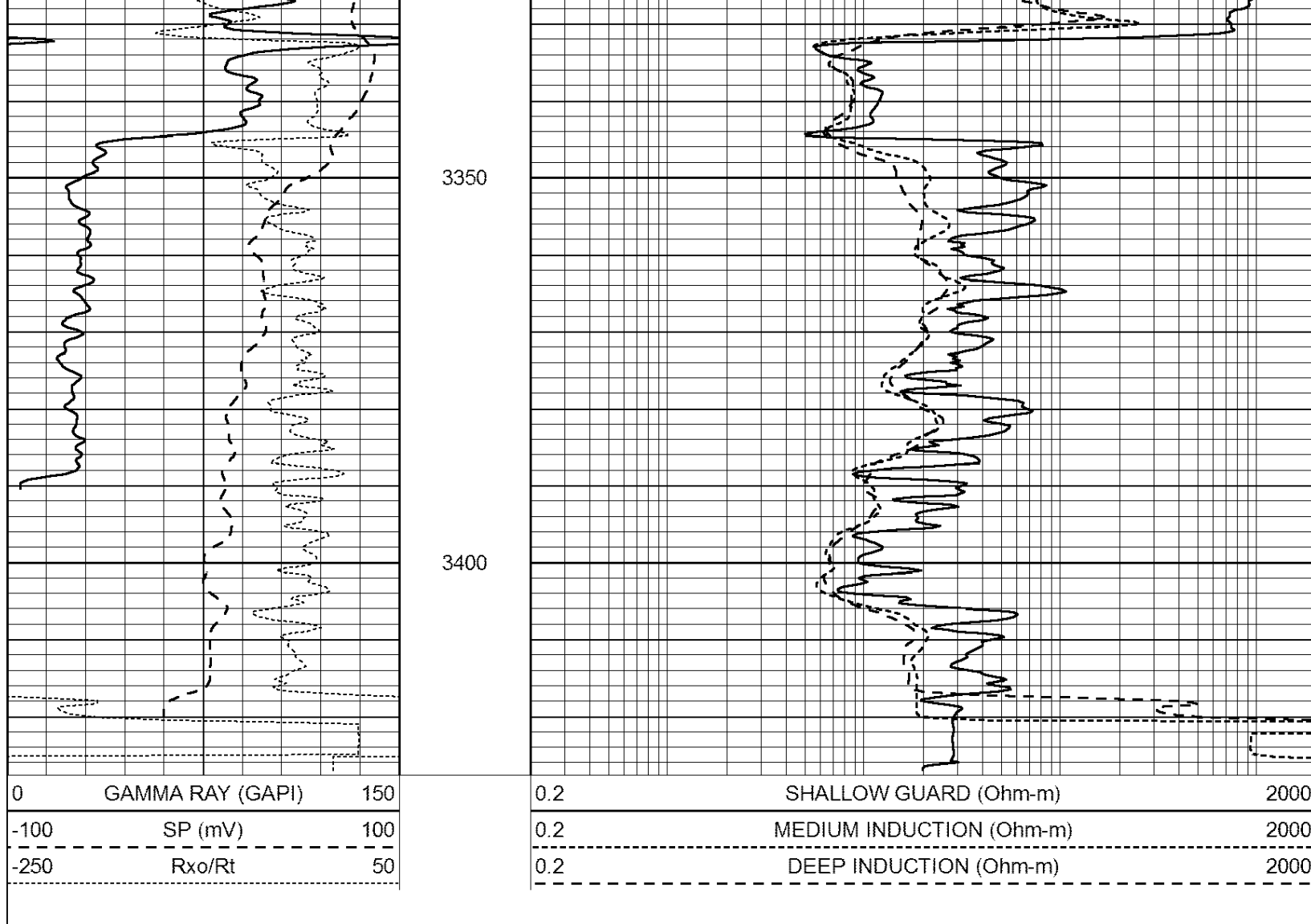
0	GAMMA RAY (GAPI)	150
-100	SP (mV)	100
-250	Rxo/Rt	50

0.2	SHALLOW GUARD (Ohm-m)	2000
0.2	MEDIUM INDUCTION (Ohm-m)	2000
0.2	DEEP INDUCTION (Ohm-m)	2000



3200
3250
3300





Calibration Report

Database File: 26425ddn.db
 Dataset Pathname: pass3.2
 Dataset Creation: Tue Dec 16 20:33:20 2014 by Calc Open-Cased 090629

Dual Induction Calibration Report

Serial-Model: PROBE7-DILG
 Surface Cal Performed: Fri Dec 05 11:16:41 2014
 Downhole Cal Performed: Sat Jan 19 19:51:38 2013
 After Survey Verification Performed: Sat Jan 19 19:51:38 2013

Surface Calibration

Loop:	Readings			References			Results	
	Air	Loop	V	Air	Loop	mmho/m	m	b
Deep	0.793	0.790	V	0.000	400.000	mmho/m	520.000	12.000
Medium	0.992	1.002	V	0.000	464.000	mmho/m	570.000	-32.000
Internal:	Zero	Cal	V	Zero	Cal	mmho/m	m	b
Deep	0.041	0.642	V	0.000	400.000	mmho/m	664.874	-27.011
Medium	0.035	0.802	V	0.000	464.000	mmho/m	604.936	-21.367

Downhole Calibration

Readings			References			Results	
Zero	Cal	V	Zero	Cal	mmho/m	m'	b'

Deep	135384.000	27094.500	mmho/m	135400.000	27082.400	mmho/m	1.000	-19.259
Medium	-47330.100	-9381.740	mmho/m	-47327.100	-9389.280	mmho/m	1.000	-10.154
LL3		7.322	V		1400.000	Ohm-m		
		0.038	V		20.000	Ohm-m		
		-7.273	V		4000.000	mmho-m		

After Survey Verification

	Readings			Targets			Results	
	Zero	Cal		Zero	Cal		m'	b'
Deep	0.000	0.000	mmho/m	135384.000	27094.500	mmho/m	1.000	0.000
Medium	0.000	0.000	mmho/m	-47330.100	-9381.740	mmho/m	1.000	0.000
LL3		0.000	Ohm-m		1400.000	Ohm-m		
		0.000	Ohm-m		20.000	Ohm-m		
		0.000	mmho-m		4000.000	mmho-m		

Compensated Density Calibration Report

Serial-Model: GEAR5-GEARHART
 Source / Verifier: 147 / 147
 Master Calibration Performed: Tue Dec 16 16:19:09 2014
 Before Survey Verification Performed:
 After Survey Verification Performed:

Master Calibration

	Density		Far Detector	Near Detector	
Magnesium	1.710	g/cc	894.82	531.60	cps
Aluminum	2.600	g/cc	199.46	368.39	cps
Spine Angle = 76.27			Density/Spine Ratio = 0.576		
	Size		Reading		
Small Ring	8.20	in	1.64	V	
Large Ring	14.00	in	2.93	V	

Before Survey Verification

Target	Measured
g/cc	g/cc
g/cc	g/cc
g/cc	g/cc

After Survey Verification

Target	Measured
g/cc	g/cc
g/cc	g/cc
g/cc	g/cc

Compensated Neutron Calibration Report

Serial Number: 080620
 Tool Model: Probe

PRE-SURVEY VERIFICATION

Detector	Readings	Measured	Target
Short Space	cps		
Long Space	cps	pu	pu

POST-SURVEY VERIFICATION

Detector

Readings

Measured

Target

Short Space
Long Space

cps
cps

pu

pu

Gamma Ray Calibration Report

Serial Number: 46001
Tool Model: Probe1
Performed: Mon Nov 24 09:45:18 2014

Calibrator Value: 1.0 GAPI

Background Reading: 0.0 cps
Calibrator Reading: 1.0 cps

Sensitivity: 0.2600 GAPI/cps