



**COMPLETION
& PRODUCTION
SERVICES CO.**

**MICRO
LOG**

Company GATEWAY RESOURCES, LLC.
Well WORCESTER #3-17
Field
County GRAHAM
State KANSAS

Company GATEWAY RESOURCES, LLC.
Well WORCESTER #3-17
Field
County GRAHAM State KANSAS

Location: 1717' FNL & 688' FEL
API # : 15-065-24079-0000
SEC 17 TWP 7S RGE 22W
Permanent Datum GROUND LEVEL Elevation 2335
Log Measured From KELLY BUSHING 10' A.G.L.
Drilling Measured From KELLY BUSHING
Other Services
CDL/CNL
DIL
Elevation
K.B. 2345
D.F. 2343
G.L. 2335

Date	11/3/14
Run Number	TWO
Depth Driller	3980
Depth Logger	3978
Bottom Logged Interval	3970
Top Log Interval	3100
Casing Driller	8 5/8" @ 219
Casing Logger	220
Bit Size	7 7/8"
Type Fluid in Hole	CHEMICAL MUD
Density / Viscosity	9.2/55
pH / Fluid Loss	11.0/8.4
Source of Sample	FLOWLINE
Rm @ Meas. Temp	1.20 @ 70F
Rmt @ Meas. Temp	0.90 @ 70F
Rmc @ Meas. Temp	1.44 @ 70F
Source of Rmf / Rmc	MEASUREMENT
Rm @ BHT	0.72 @ 116F
Time Circulation Stopped	2 HOURS
Time Logger on Bottom	
Maximum Recorded Temperature	116F
Equipment Number	4010
Location	HAYS, KANSAS
Recorded By	JEFF GRONEWEG
Witnessed By	GARY GENSCH

<<< Fold Here >>>

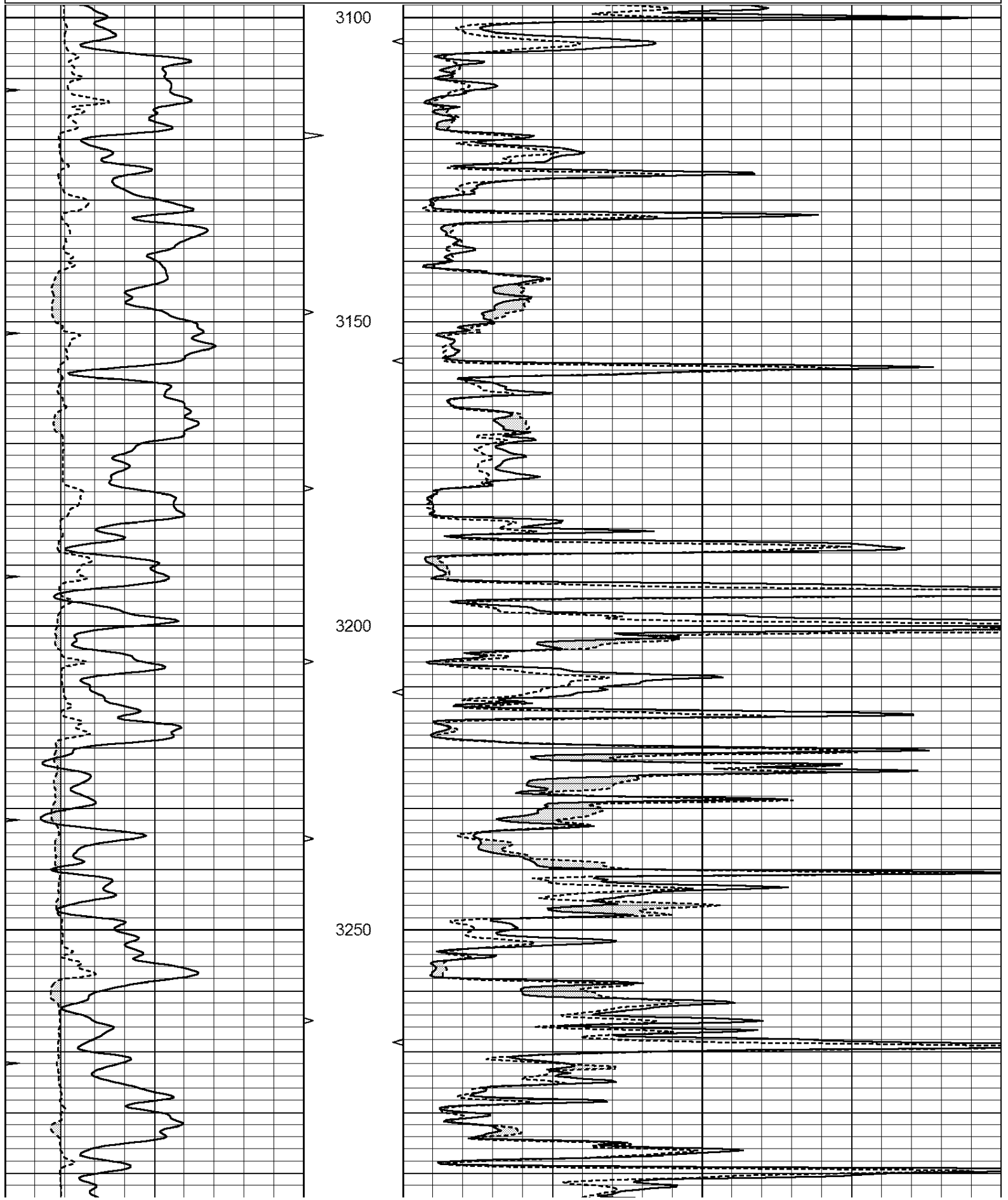
All interpretations are opinions based on inferences from electrical or other measurements and we cannot and do not guarantee the accuracy or correctness of any interpretation, and we shall not, except in the case of gross or willful negligence on our part, be liable or responsible for any loss, costs, damages, or expenses incurred or sustained by anyone resulting from any interpretation made by any of our officers, agents or employees. These interpretations are also subject to our general terms and conditions set out in our current Price Schedule.

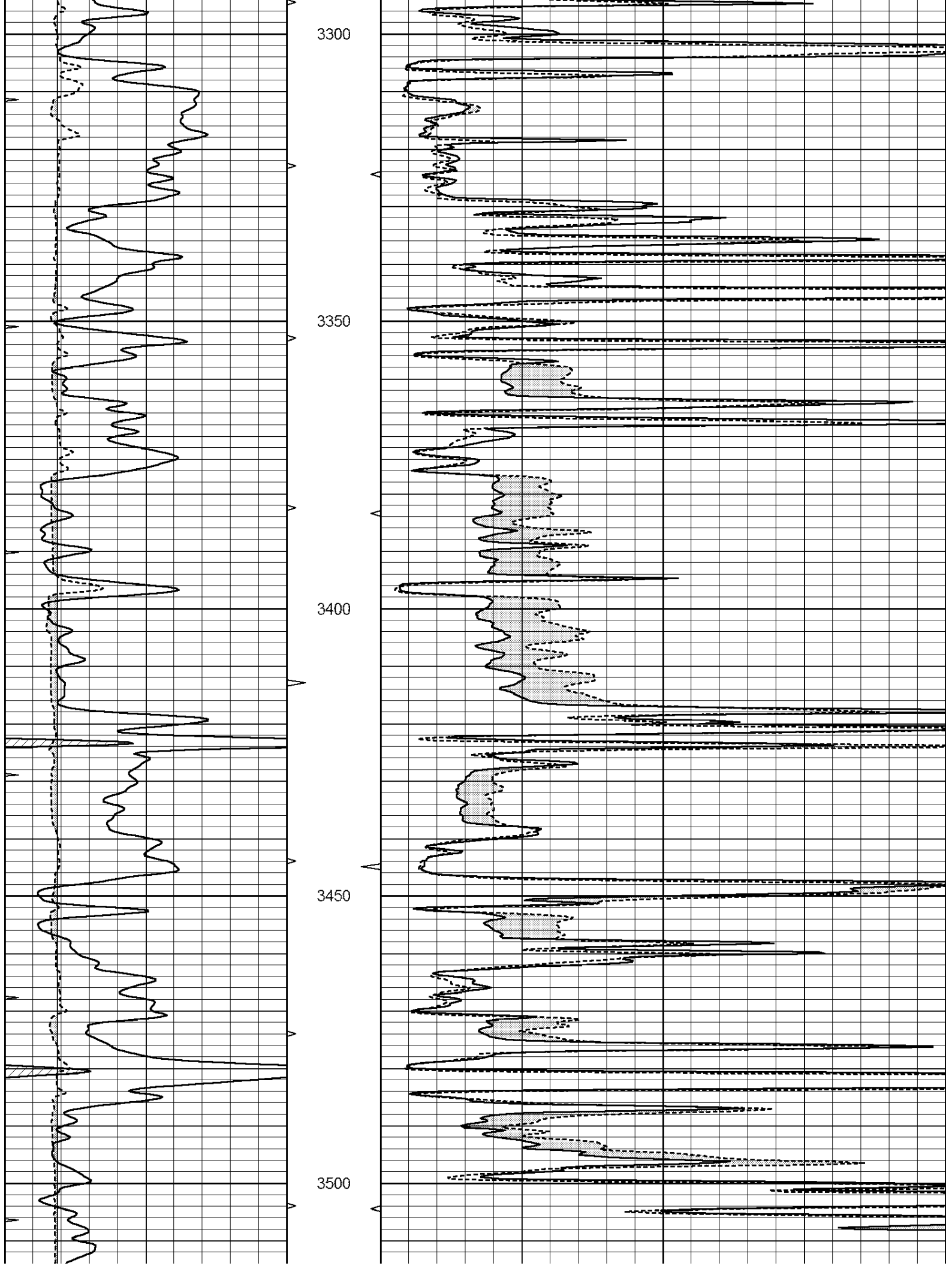
Comments

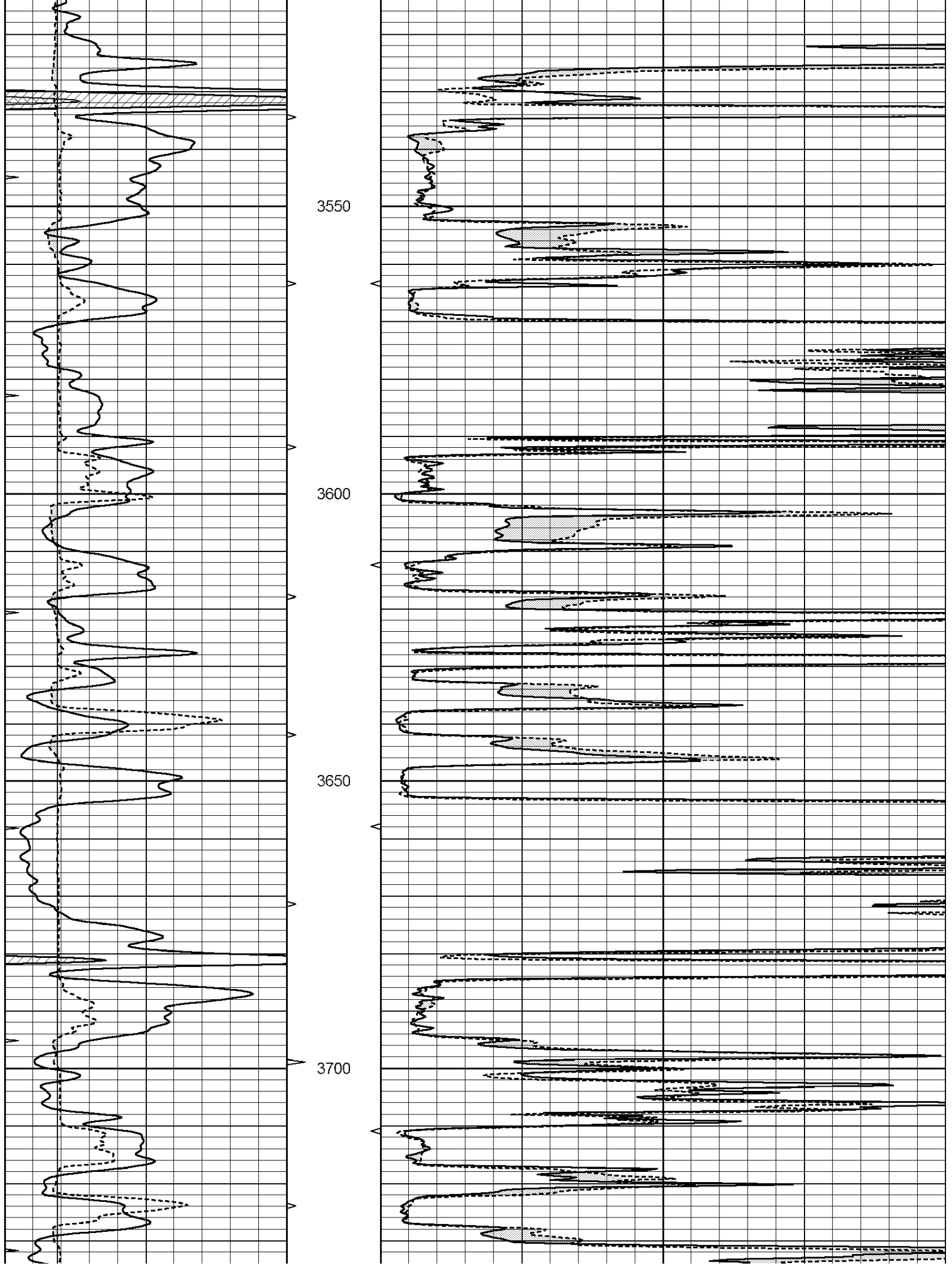
THANK YOU FOR USING NABORS, HAYS, KS. (785) 628-6395
DIRECTIONS:
HILL CITY, KS - 5 MILES NORTH TO RD V - 2 1/2 MILES EAST - .8 MILES NORTH
EAST INTO FOLLOW RIGHT FORK IN LOCATION RD

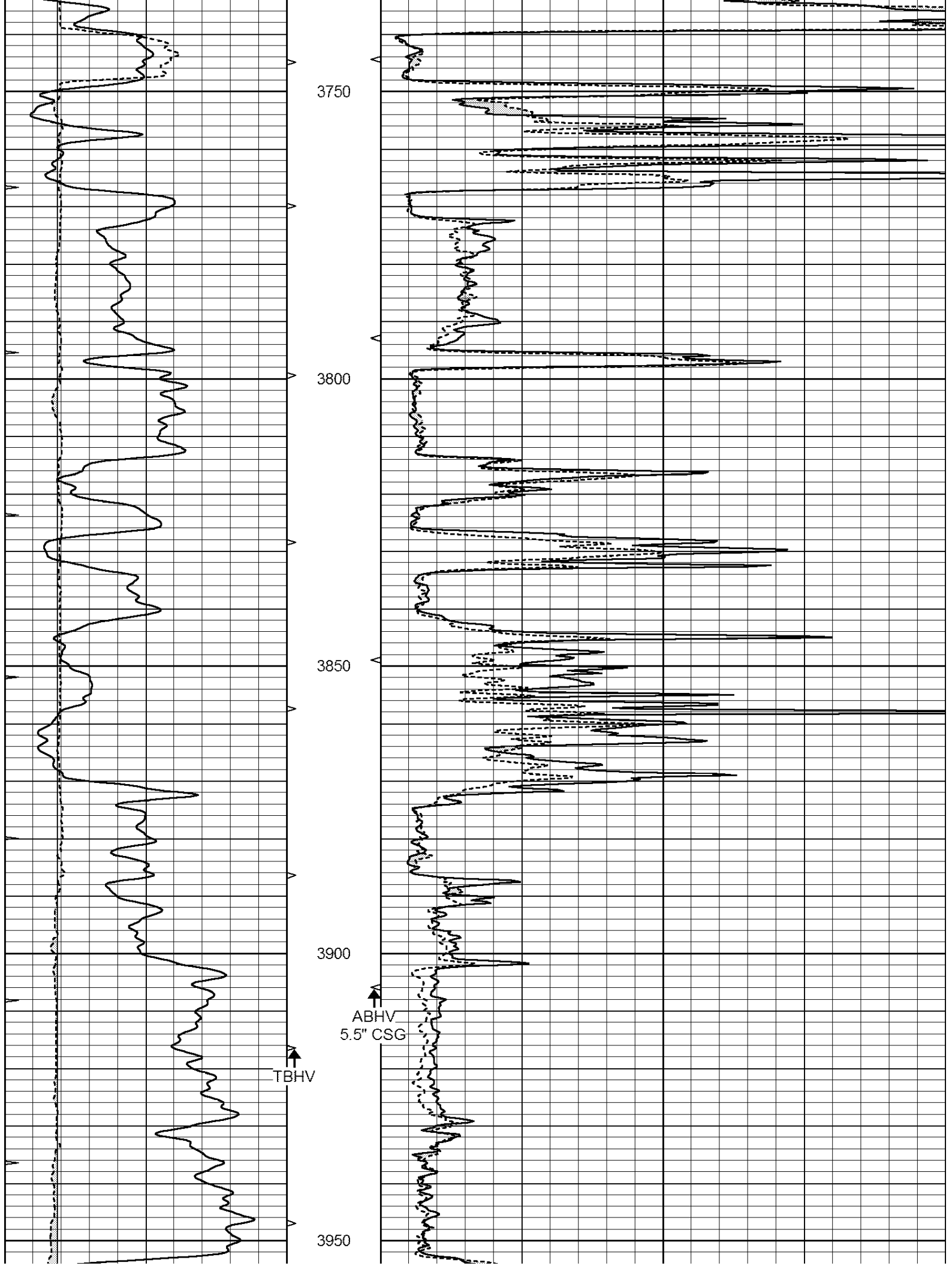
Database File: 26222ddn.db
Dataset Pathname: pass5.2
Presentation Format: _micro
Dataset Creation: Mon Nov 03 21:33:13 2014 by Calc Open-Cased 090629
Charted by: Depth in Feet scaled 1:240

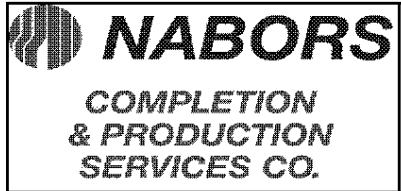
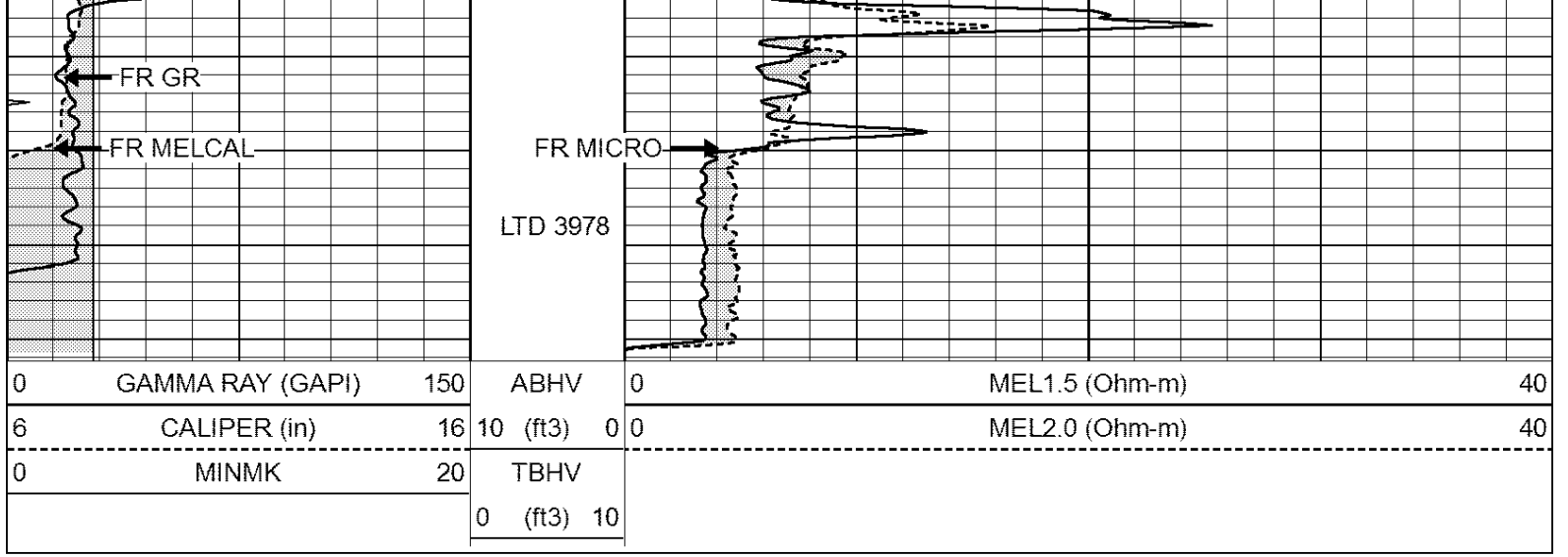
0	GAMMA RAY (GAPI)	150	ABHV	0	MEL1.5 (Ohm-m)	40
6	CALIPER (in)	16	10 (ft3)	0	MEL2.0 (Ohm-m)	40
0	MINMK	20	TBHV			
			0 (ft3)	10		







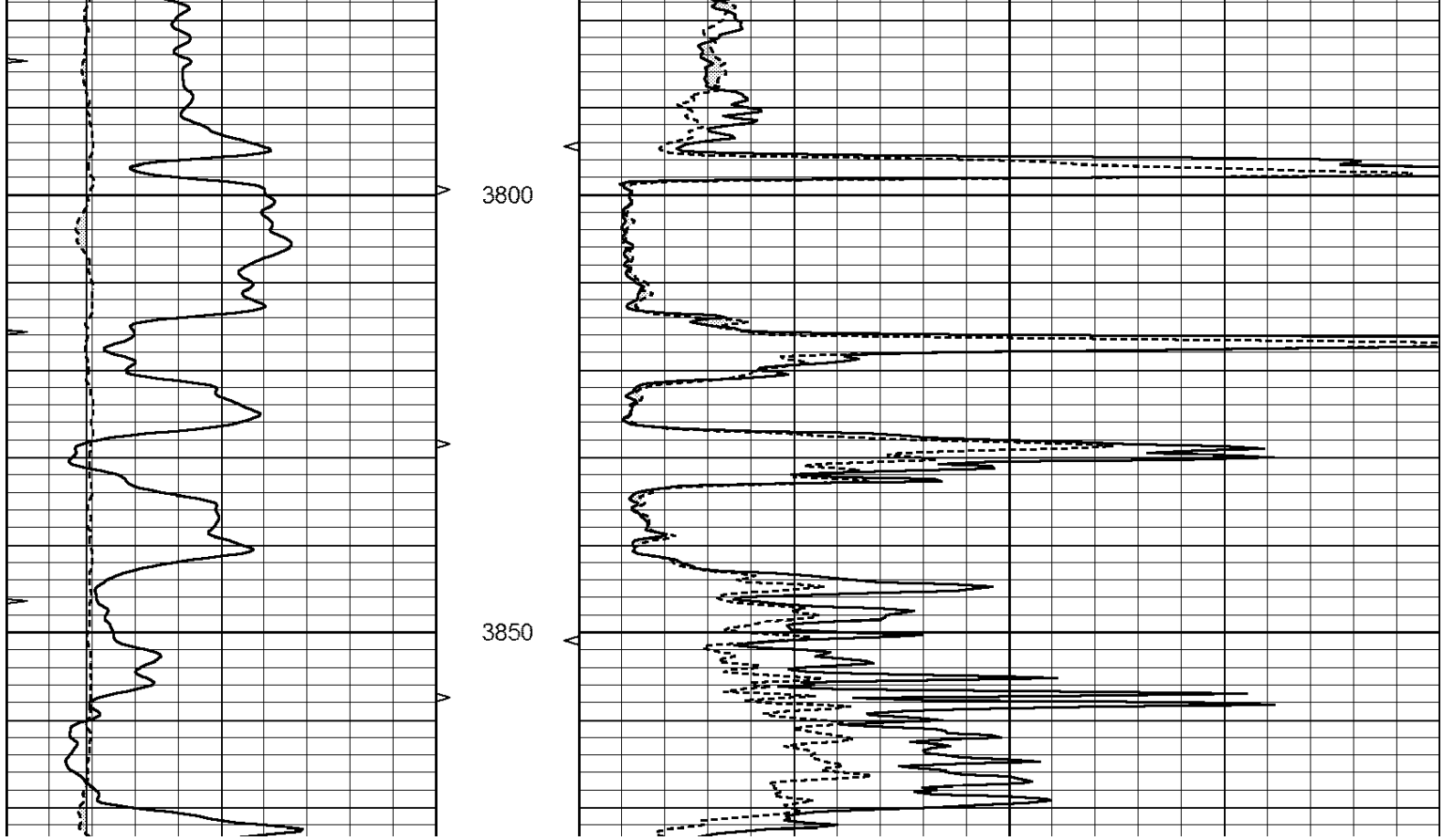


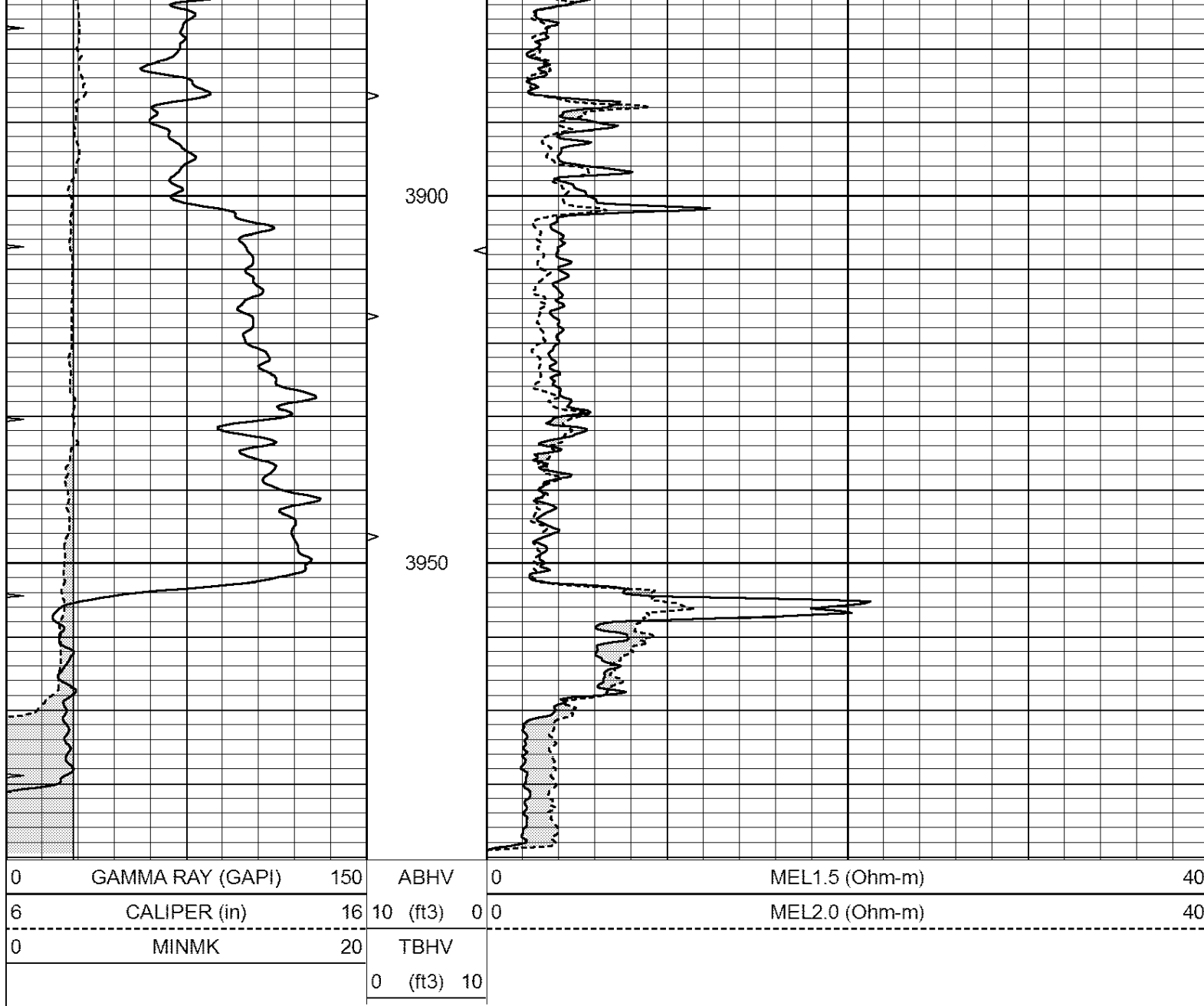


REPEAT SECTION

Database File: 26222ddn.db
 Dataset Pathname: pass4.1
 Presentation Format: _micro
 Dataset Creation: Mon Nov 03 21:07:01 2014 by Calc Open-Cased 090629
 Charted by: Depth in Feet scaled 1:240

0	GAMMA RAY (GAPI)	150	ABHV	0	MEL1.5 (Ohm-m)	40
6	CALIPER (in)	16	10 (ft3)	0	MEL2.0 (Ohm-m)	40
0	MINMK	20	TBHV			
			0 (ft3)	10		





Calibration Report

Database File: 26222ddn.db
 Dataset Pathname: pass5.2
 Dataset Creation: Mon Nov 03 21:33:13 2014 by Calc Open-Cased 090629

MICRO Calibration Report

Serial Number: MICRO3
 Tool Model: PROBE
 Performed: Thu Nov 17 03:06:31 2011

Caliper Calibration: Gain=3.916 Offset=-9.757

	Low Cal	High Cal
References	8.000	14.000
Readings	4.257	5.789

1.5" Calibration: Gain=130.000 Offset=0.000

	Low Cal	High Cal
References	0.000	20.000
Readings	0.004	0.228

2" Calibration: Gain=200.553 Offset=-1.220

References	Low Cal	High Cal
Readings	0.000	20.000
	0.005	0.175

Gamma Ray Calibration Report

Serial Number:	GR6	
Tool Model:	OPEN	
Performed:	Sun Aug 17 15:23:09 2014	
Calibrator Value:	150.0	GAPI
Background Reading:	0.0	cps
Calibrator Reading:	276.0	cps
Sensitivity:	0.7000	GAPI/cps