



Pioneer Energy Services

Microresistivity Log

15-035-23,980-00-01

API No.

Company **Alton Oil, LLC**
 Well **Century Farm #1**
 Field **Nauman**
 County **Cowley** State **Kansas**

Location **2970' FSL & 825' FEL**
 Sec: **20** Twp: **30S** Rge: **5E**

Other Services
 CNL/CDL
 DIL

Permanent Datum **Ground Level** Elevation **1320**
 Log Measured From **Kelly Bushing** **8** Ft. Above Perm. Datum
 Drilling Measured From **Kelly Bushing**

Elevation
 K.B. 1328
 D.F. G.L. 1320

Date	1/7/2015
Run Number	Two
Depth Driller	3173
Depth Logger	3170
Bottom Logged Interval	3169
Top Log Interval	2800
Casing Driller	8.625 @ 260
Casing Logger	263
Bit Size	7.875
Type Fluid in Hole	Chemical
Salinity, ppm CL	13,000
Density / Viscosity	8.6 39
pH / Fluid Loss	9.0 12.8
Source of Sample	Flowline
Rm @ Meas. Temp	.4 @ 55
Rmf @ Meas. Temp	.3 @ 55
Rmc @ Meas. Temp	.54 @ 55
Source of Rmf / Rmc	Charts
Rm @ BHT	.2 @ 108
Operating Rig Time	3 Hours
Max Rec. Temp. F	108
Equipment Number	51
Location	Hays
Recorded By	C. Desaire
Witnessed By	Mike Pressnall

<<< Fold Here >>>

All interpretations are opinions based on inferences from electrical or other measurements and we cannot and do not guarantee the accuracy or correctness of any interpretation, and we shall not, except in the case of gross or willful negligence on our part, be liable or responsible for any loss, costs, damages, or expenses incurred or sustained by anyone resulting from any interpretation made by any of our officers, agents or employees. These interpretations are also subject to our general terms and conditions set out in our current Price Schedule.

Comments

Thank you for using Pioneer Energy Services
www.pioneeres.com
 785 625 3858

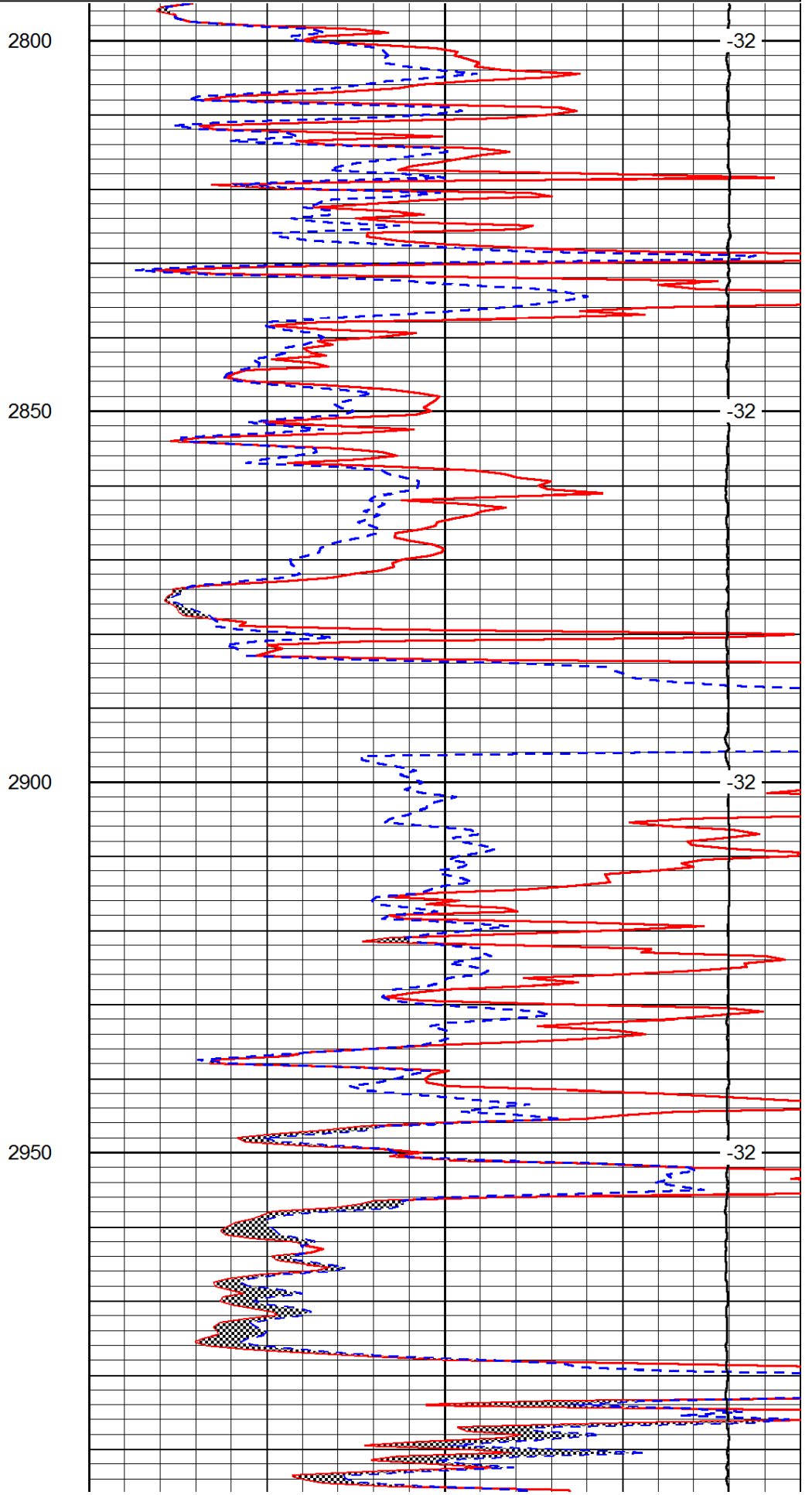
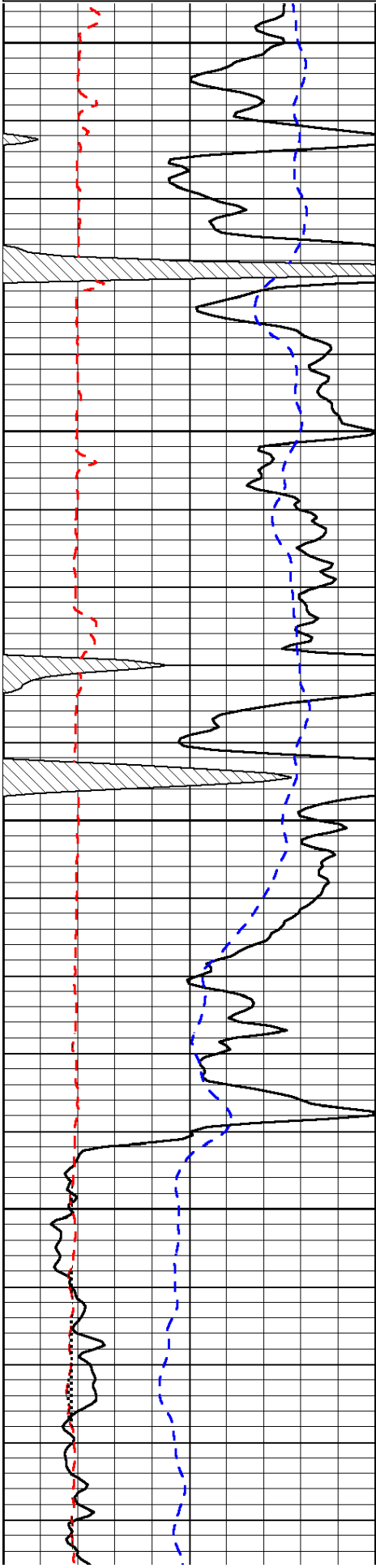
Rock KS, E to 141st St,
 1/2 S, W Into

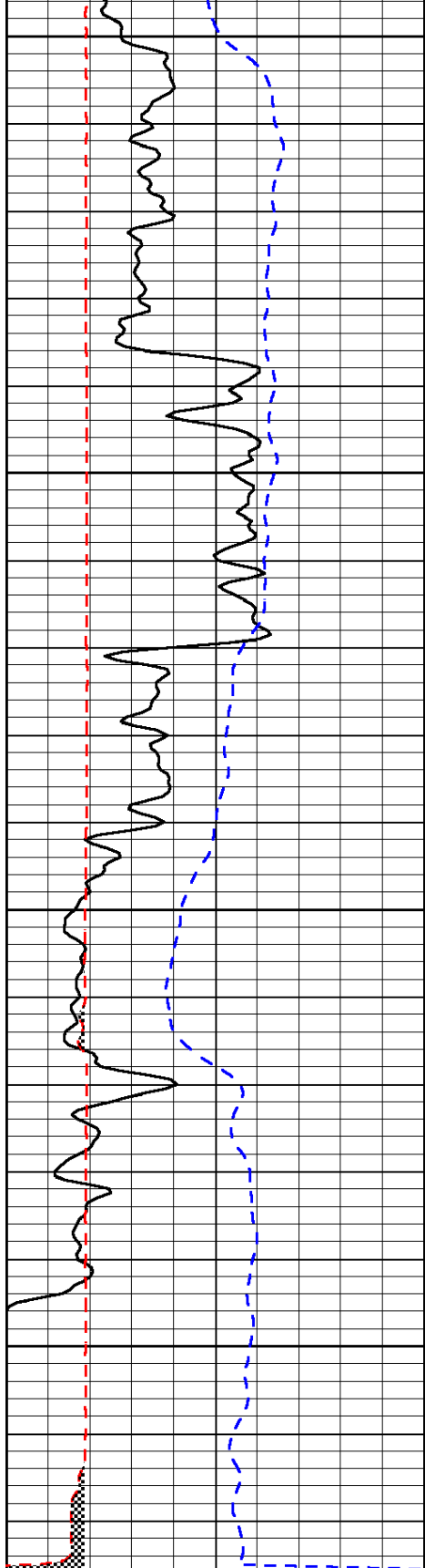
Database File: c:\warrior\data\alton_century farm #1\altonhd.db
 Dataset Pathname: dil/altstk
 Presentation Format: micro
 Dataset Creation: Wed Jan 07 00:58:50 2015
 Charted by: Depth in Feet scaled 1:240

0	Gamma Ray	150
6	MCAL (GAPI)	16
-200	SP (mV)	0

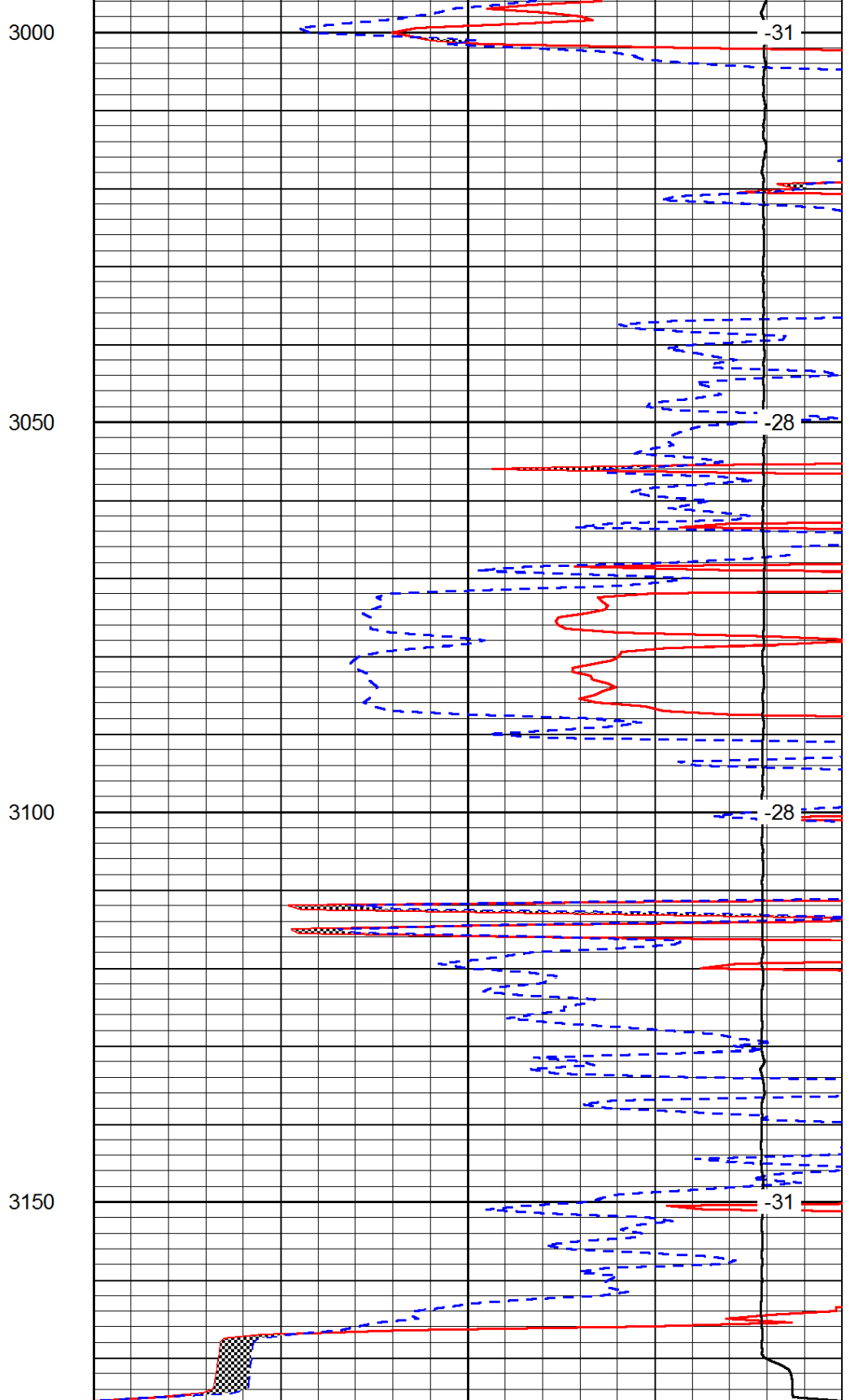
0	Micro Inverse 1 X 1	40
0	Micro Normal 2"	40
15000	Line Weight	0

LSPD





0	Gamma Ray	150
6	MCAL (GAPI)	16
-200	SP (mV)	0



0	Micro Inverse 1 X 1	40
0	Micro Normal 2"	40
15000	Line Weight	0

LSPD