



Pioneer Energy Services

# Microresistivity Log

15-055-22,363-00-00

API No.

Company **American Warrior, Inc.**

Well **O'Brate-Finney #2-36**

Field **Unknown**

County **Finney** State **Kansas**

Location **597' FNL & 1828' FWL**

Sec: **36** Twp: **25S** Rge: **31W**

Other Services  
CNL/CDL  
DIL

Elevation

K.B. 2794

D.F. 2781

G.L. 2781

Permanent Datum **Ground Level** Elevation **2781**  
Log Measured From **Kelly Bushing** 13 Ft. Above Perm. Datum  
Drilling Measured From **Kelly Bushing**

Date **12/11/2014**

Run Number **Two**

Depth Driller **5000**

Depth Logger **5004**

Bottom Logged Interval **5003**

Top Log Interval **2500**

Casing Driller **8.625 @ 1700**

Casing Logger **1696**

Bit Size **7.875**

Type Fluid in Hole **Chemical**

Salinity, ppm CL **2,200**

Density / Viscosity **9.35 | 54**

pH / Fluid Loss **9.5 | 8.8**

Source of Sample **Flowline**

Rm @ Meas. Temp **.90 @ 60**

Rmf @ Meas. Temp **.66 @ 60**

Rmc @ Meas. Temp **1.22 @ 60**

Source of Rmf / Rmc **Charts**

Rm @ BHT **.43 @ 126**

Operating Rig Time **4 Hours**

Max Rec. Temp. F **126**

Equipment Number **108**

Location **Hays**

Recorded By **J. Henrickson**

Witnessed By **Kevin Timson**

<<< Fold Here >>>

All interpretations are opinions based on inferences from electrical or other measurements and we cannot and do not guarantee the accuracy or correctness of any interpretation, and we shall not, except in the case of gross or willful negligence on our part, be liable or responsible for any loss, costs, damages, or expenses incurred or sustained by anyone resulting from any interpretation made by any of our officers, agents or employees. These interpretations are also subject to our general terms and conditions set out in our current Price Schedule.

### Comments

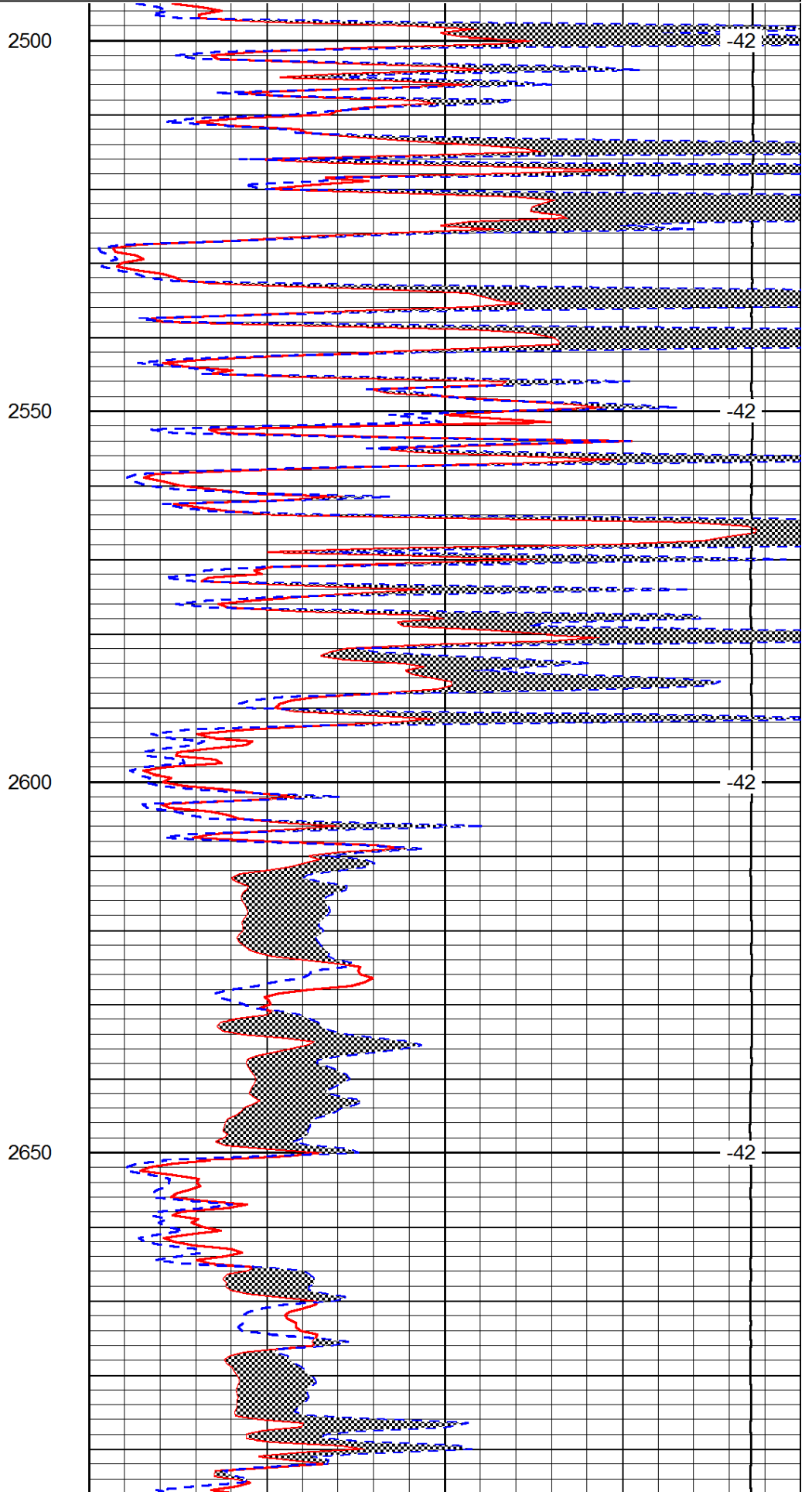
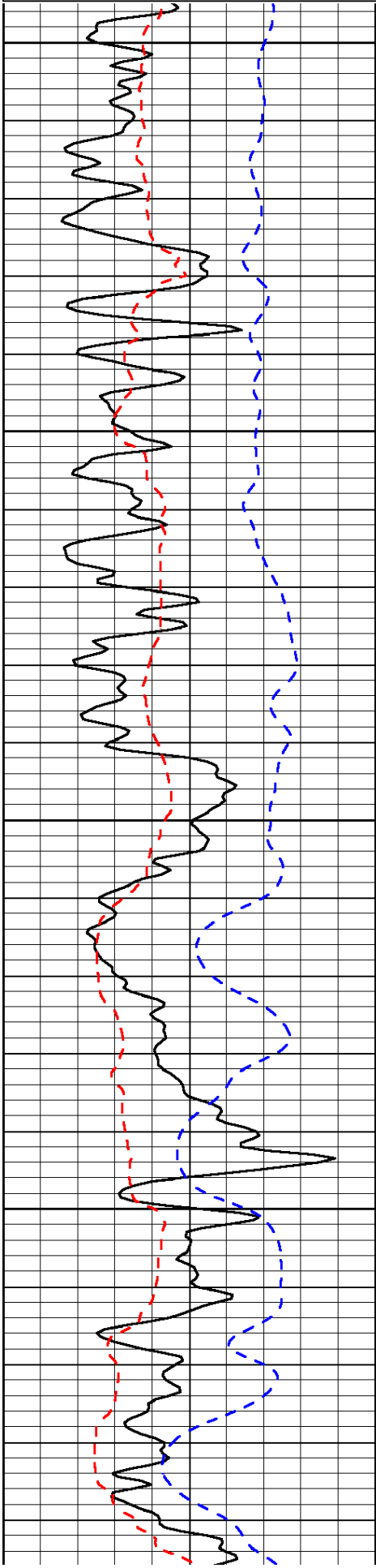
Thank you for using Pioneer Energy Services  
[www.pioneeres.com](http://www.pioneeres.com)  
 785 625 3858  
 Pierceville Kansas  
 2 South, 1/2 East, 1 1/2 South, West Into

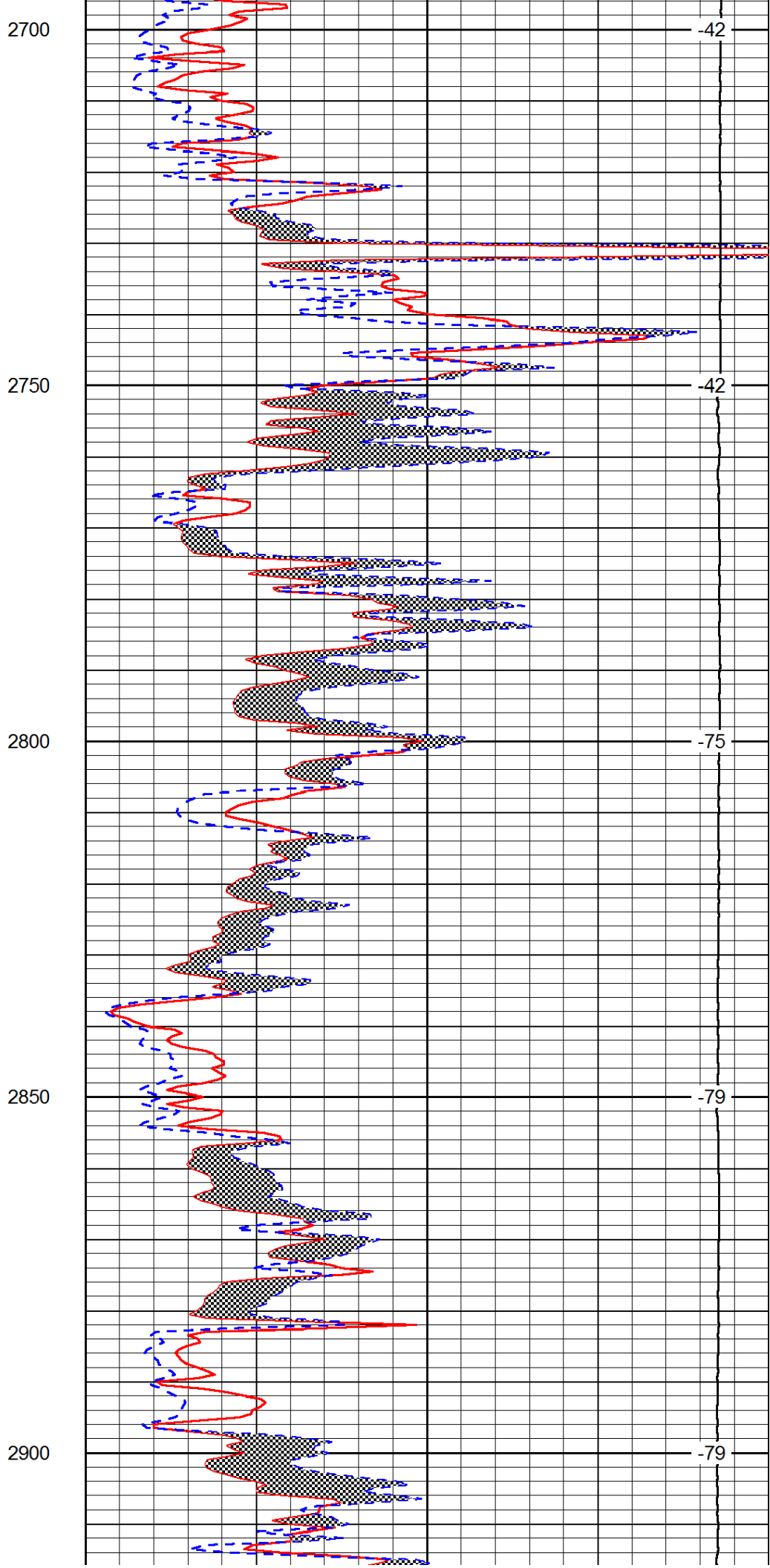
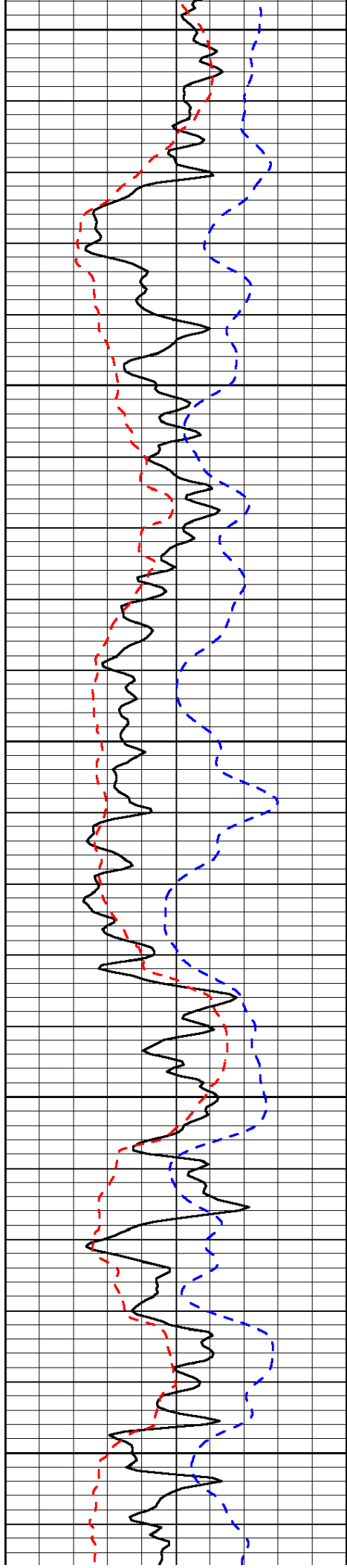
Database File: c:\warrior\data\amwar\_o'brate-finney #2-36\american\_warrior\_obrate\_finney\_2\_36hd.db  
 Dataset Pathname: DIL/awstk  
 Presentation Format: micro  
 Dataset Creation: Thu Dec 11 05:14:25 2014  
 Charted by: Depth in Feet scaled 1:240

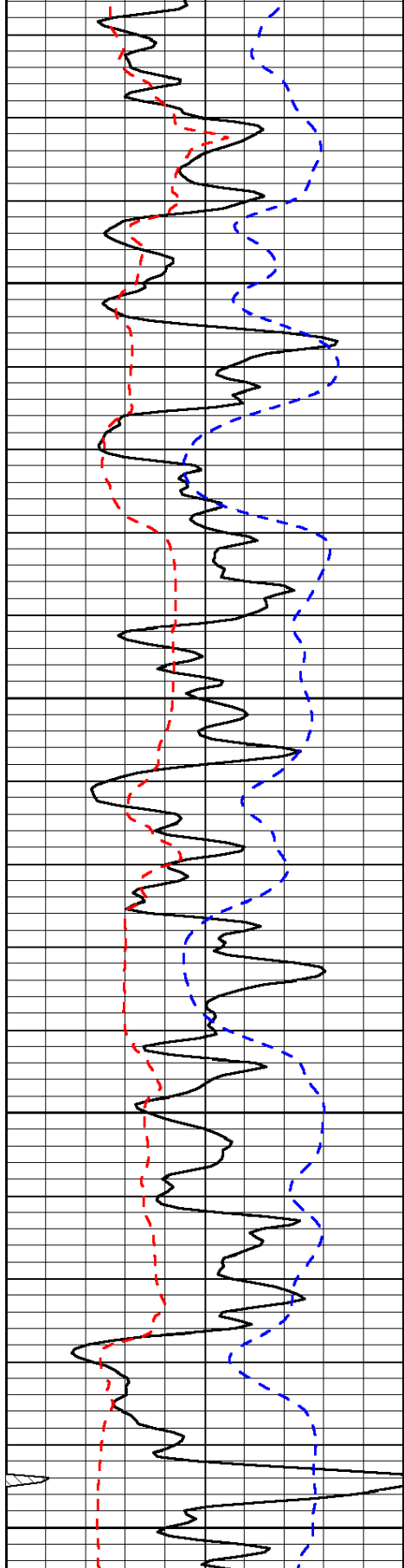
0	Gamma Ray	150
6	MCAL (GAPI)	16
-200	SP (mV)	0

0	Micro Inverse 1 X 1	40
0	Micro Normal 2"	40
15000	Line Weight	0

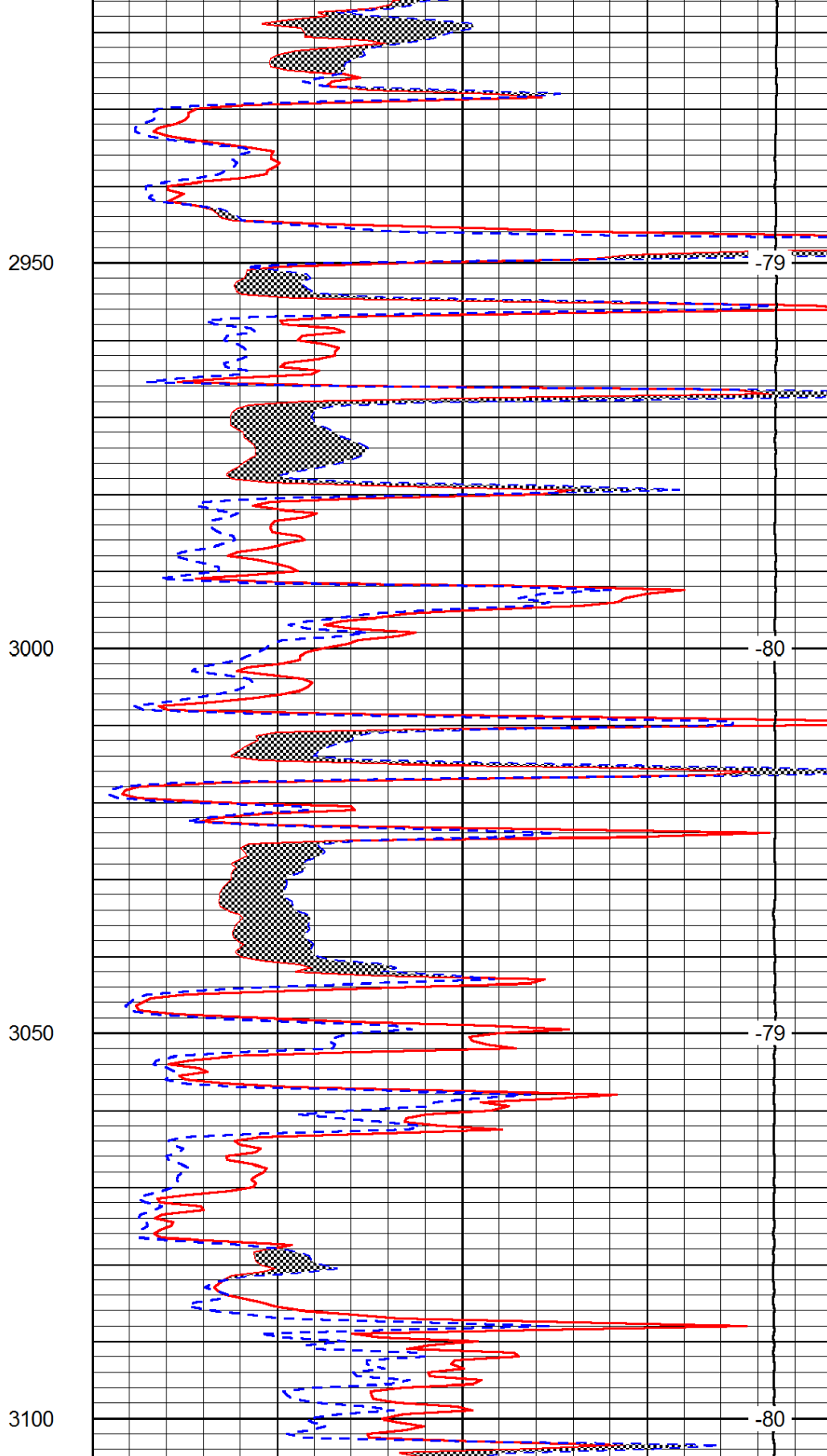
LSPD







0	Gamma Ray	150
6	MCAL (GAPI)	16
-200	SP (mV)	0



0	Micro Inverse 1 X 1	40
0	Micro Normal 2''	40
15000	Line Weight	0

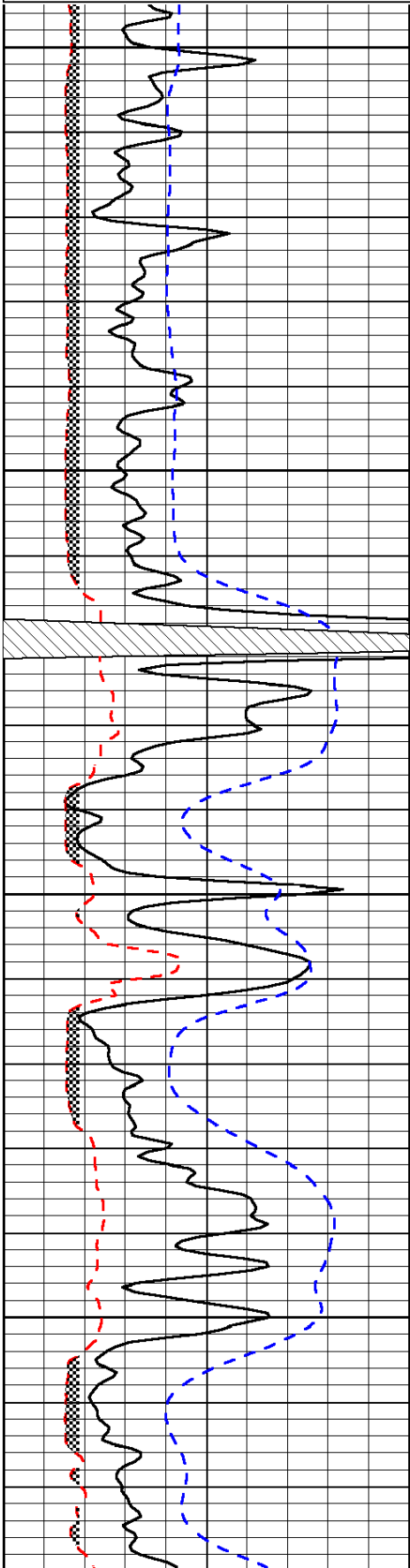
LSPD

Dataset Pathname: DIL/awstk  
 Presentation Format: micro  
 Dataset Creation: Thu Dec 11 05:14:25 2014  
 Charted by: Depth in Feet scaled 1:240

0	Gamma Ray	150
6	MCAL (GAPI)	16
-200	SP (mV)	0

0	Micro Inverse 1 X 1	40
0	Micro Normal 2"	40
15000	Line Weight	0

LSPD

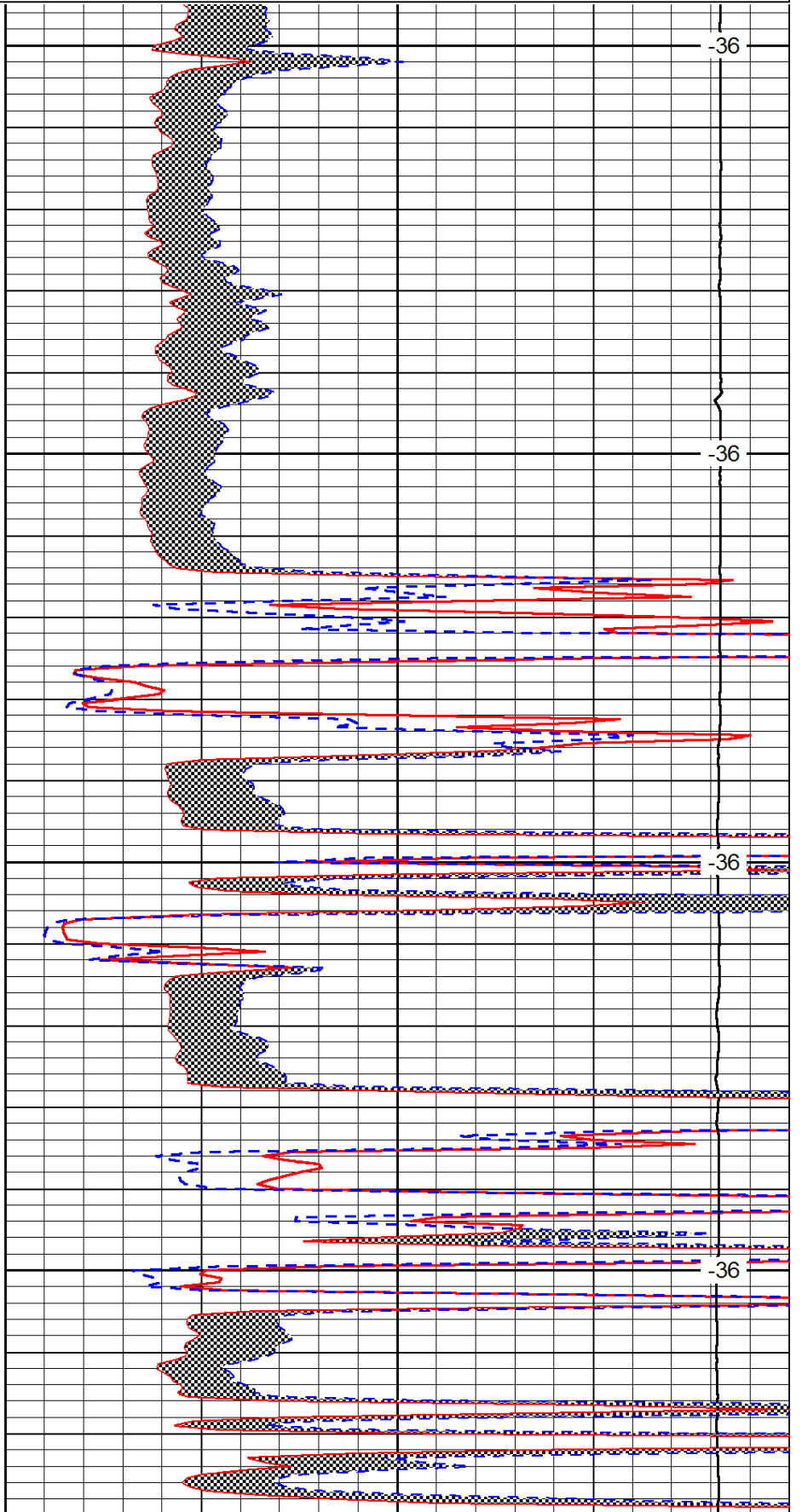


3900

3950

4000

4050

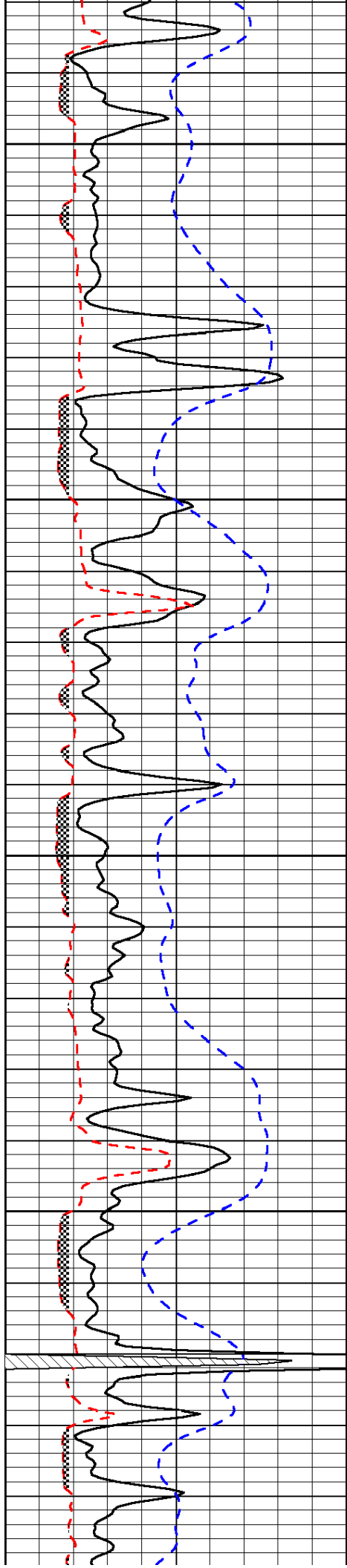


-36

-36

-36

-36



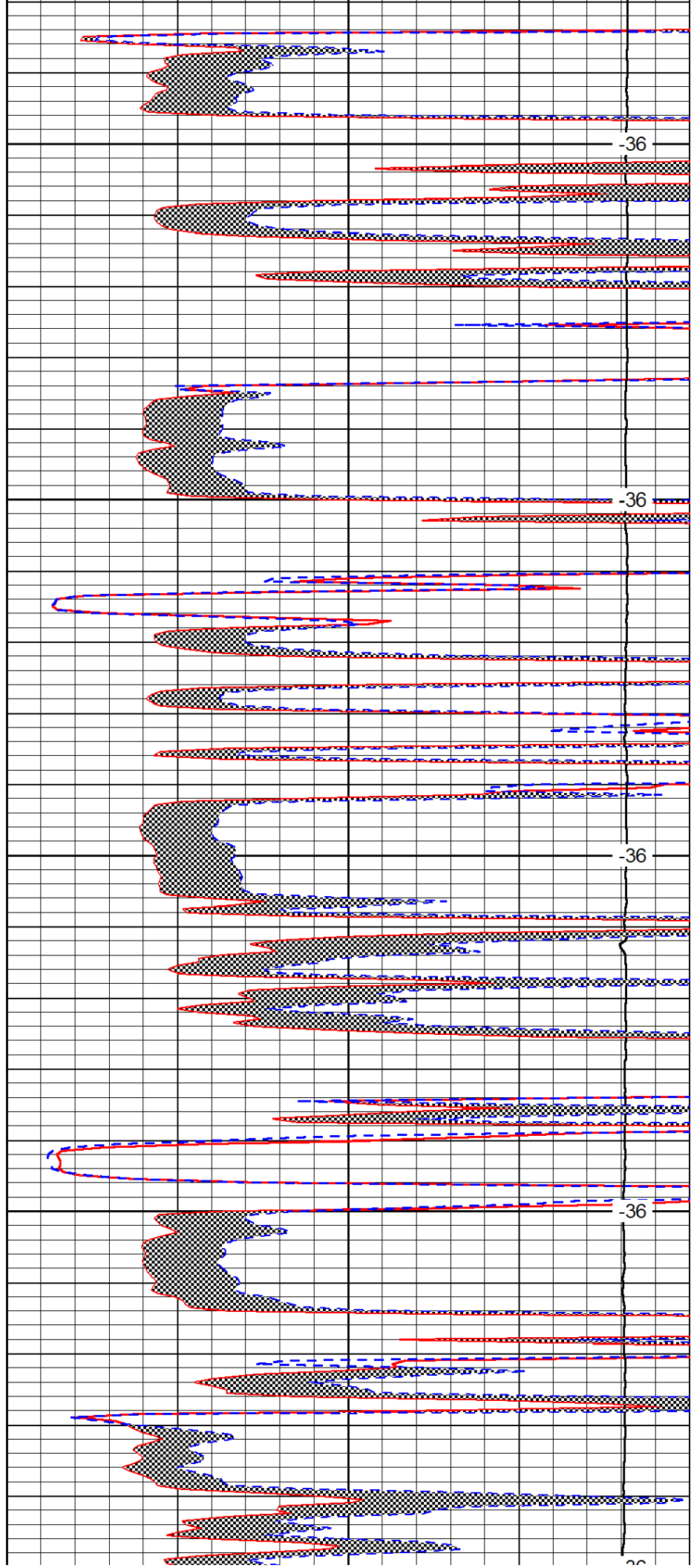
4100

4150

4200

4250

4300



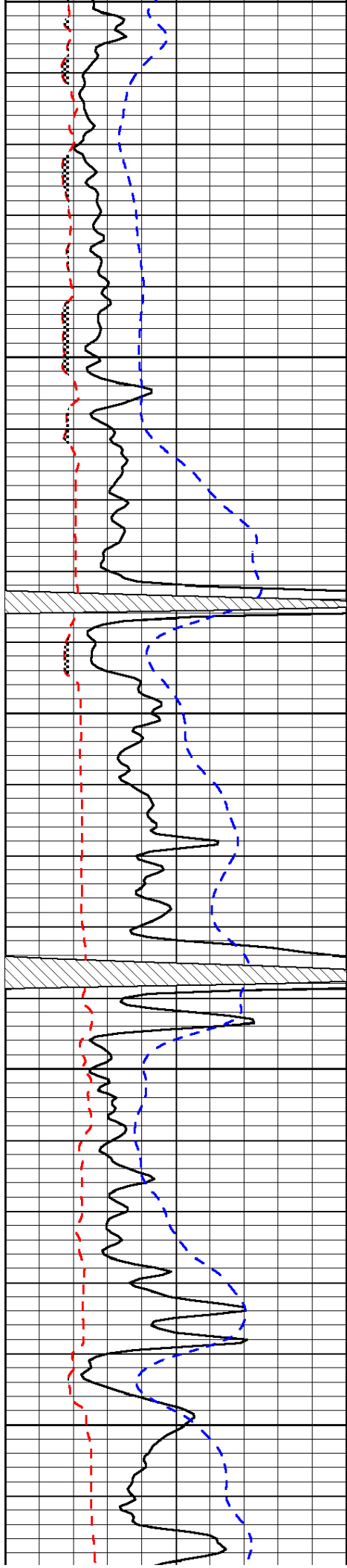
-36

-36

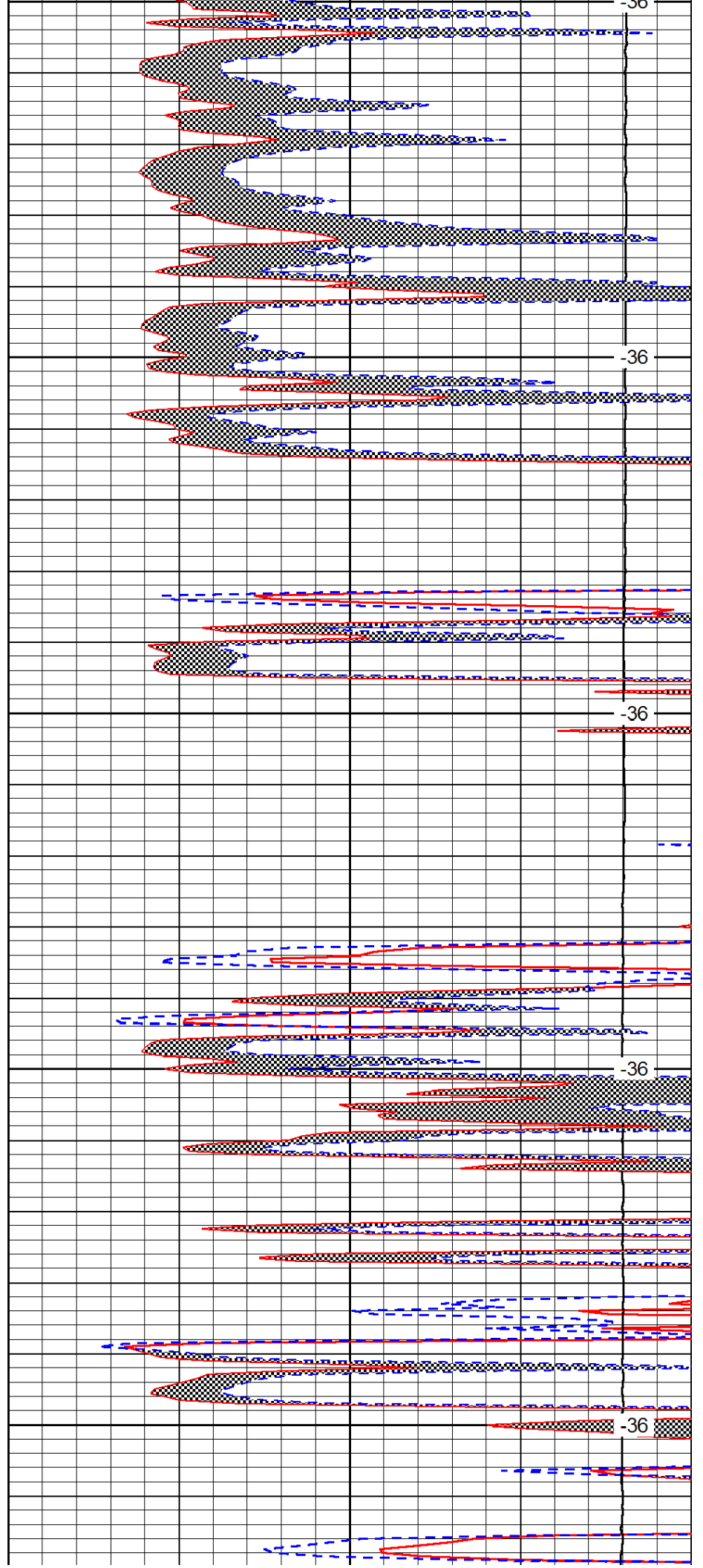
-36

-36

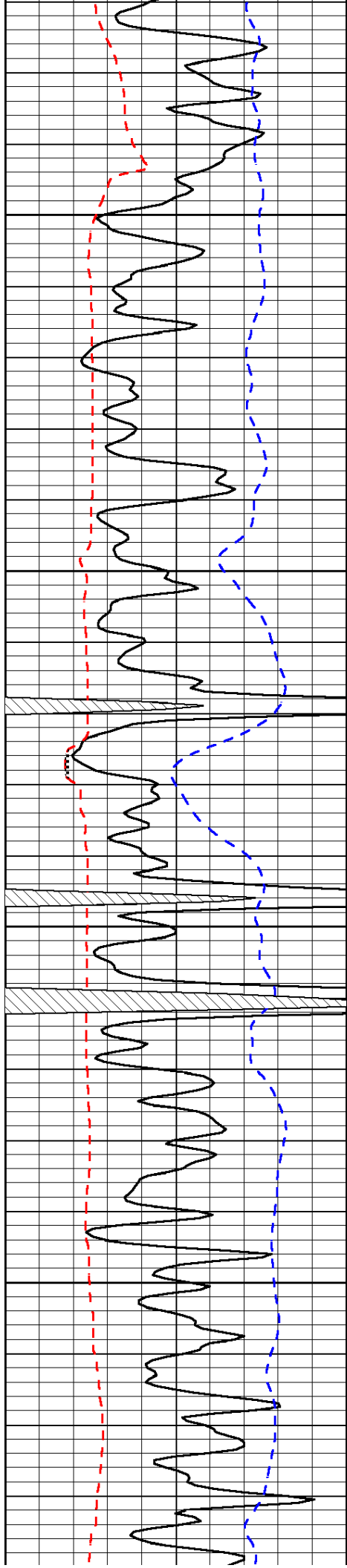
-36



4350  
4350  
4400  
4400  
4450  
4450  
4500  
4500



-36  
-36  
-36  
-36  
-36  
-36  
-36

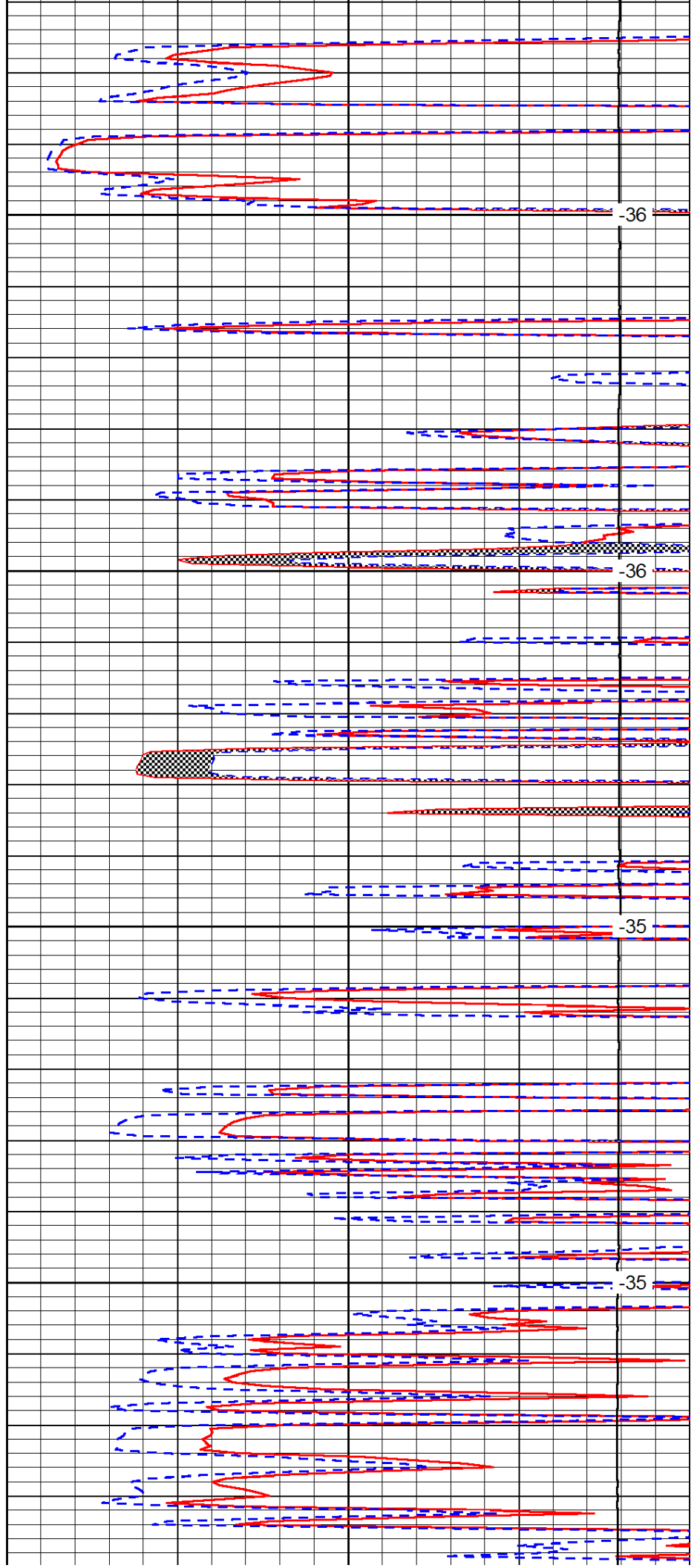


4550

4600

4650

4700

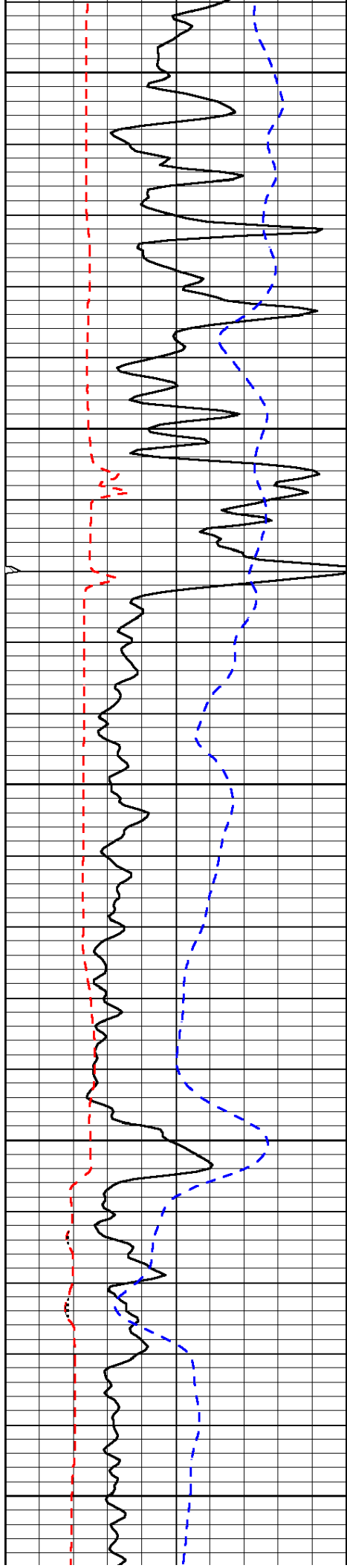


-36

-36

-35

-35



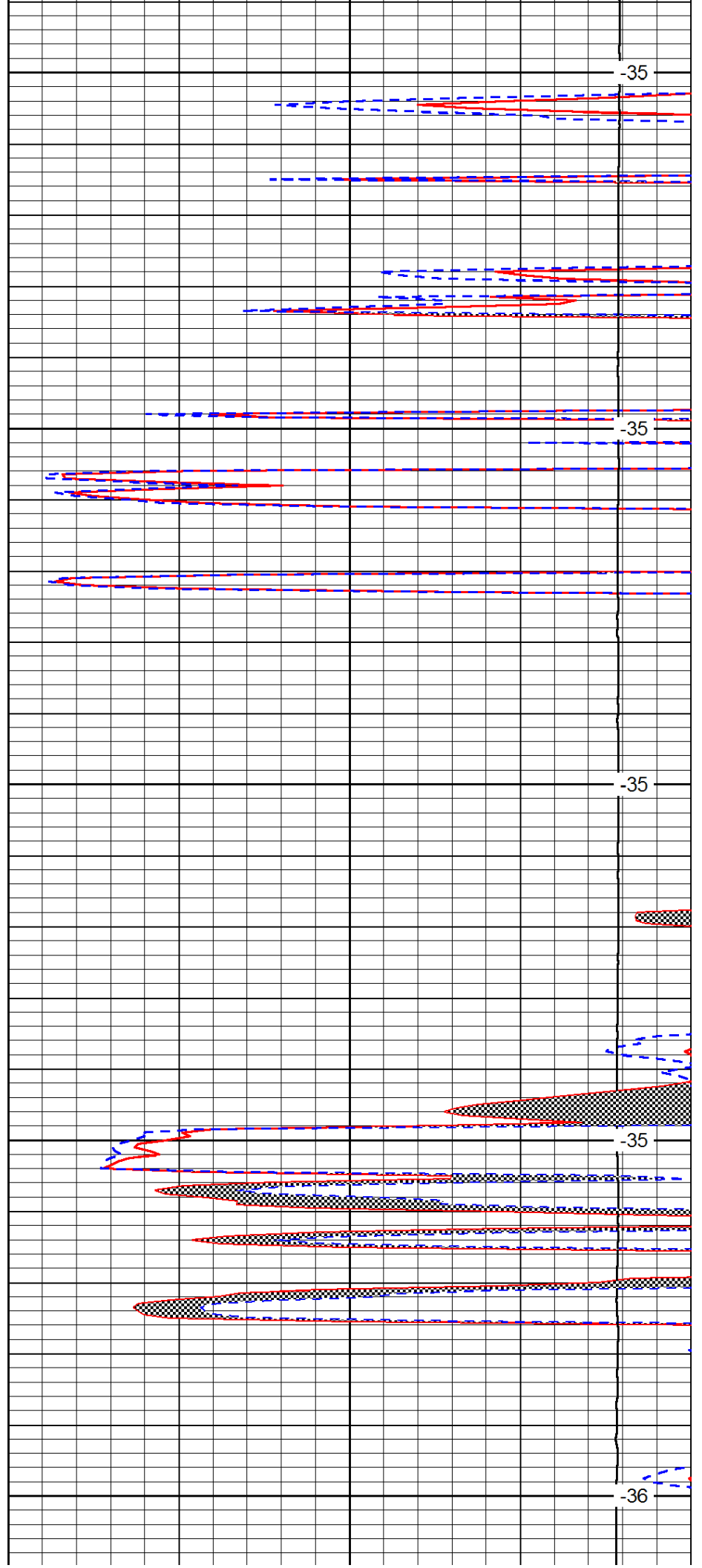
4750

4800

4850

4900

4950



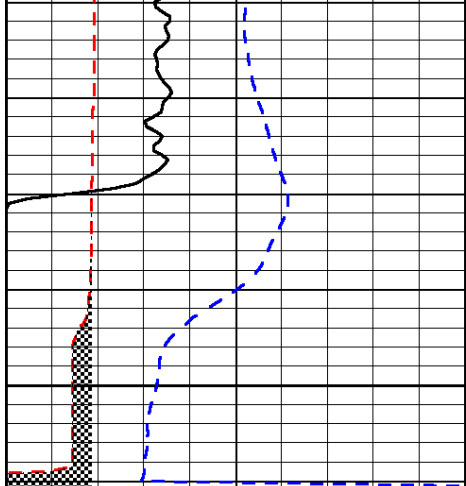
-35

-35

-35

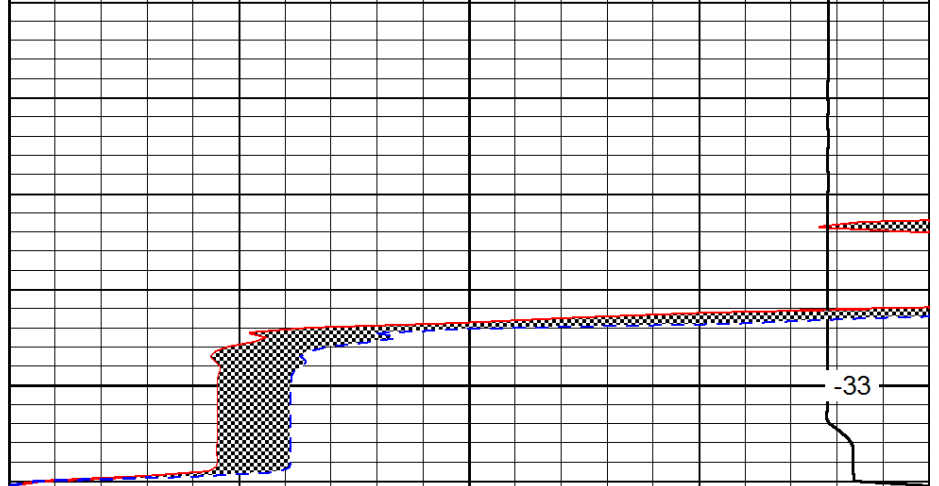
-35

-36



0	Gamma Ray	150
6	MCAL (GAPI)	16
-200	SP (mV)	0

5000



0	Micro Inverse 1 X 1	40
0	Micro Normal 2"	40
15000	Line Weight	0

LSPD