



Pioneer Energy Services

## Dual Compensated Porosity Log

15-055-22,363-00-00

API No.

Company **American Warrior, Inc.**  
 Well **O'Brate-Finney #2-36**  
 Field **Unknown**  
 County **Finney** State **Kansas**

Location **597' FNL & 1828' FWL**  
 Sec: **36** Twp: **25S** Rge: **31W**

Other Services  
 DIL  
 MEL

Permanent Datum **Ground Level** Elevation **2781**  
 Log Measured From **Kelly Bushing** 13 Ft. Above Perm. Datum  
 Drilling Measured From **Kelly Bushing**

Elevation  
 K.B. **2794**  
 D.F. **2781**  
 G.L. **2781**

Date	12/11/2014	
Run Number	One	
Type Log	CNL / CDL	
Depth Driller	5000	
Depth Logger	5004	
Bottom Logged Interval	4983	
Top Logged Interval	2500	
Type Fluid In Hole	Chemical	
Salinity, PPM CL	2,200	
Density	9.35	
Level	Full	
Max. Rec. Temp. F	126	
Operating Rig Time	4 Hours	
Equipment -- Location	108 Hays	
Recorded By	J. Henrickson	
Witnessed By	Kevin Timson	

**Borehole Record**

Run No	Bit	From	To	Size	Wgt.	To
1	12.25	00	1700	8.625	24#	1700
2	7.875	1700	5000			

**Casing Record**

From	To
00	1700

<<< Fold Here >>>

All interpretations are opinions based on inferences from electrical or other measurements and we cannot and do not guarantee the accuracy or correctness of any interpretation, and we shall not, except in the case of gross or willful negligence on our part, be liable or responsible for any loss, costs, damages, or expenses incurred or sustained by anyone resulting from any interpretation made by any of our officers, agents or employees. These interpretations are also subject to our general terms and conditions set out in our current Price Schedule.

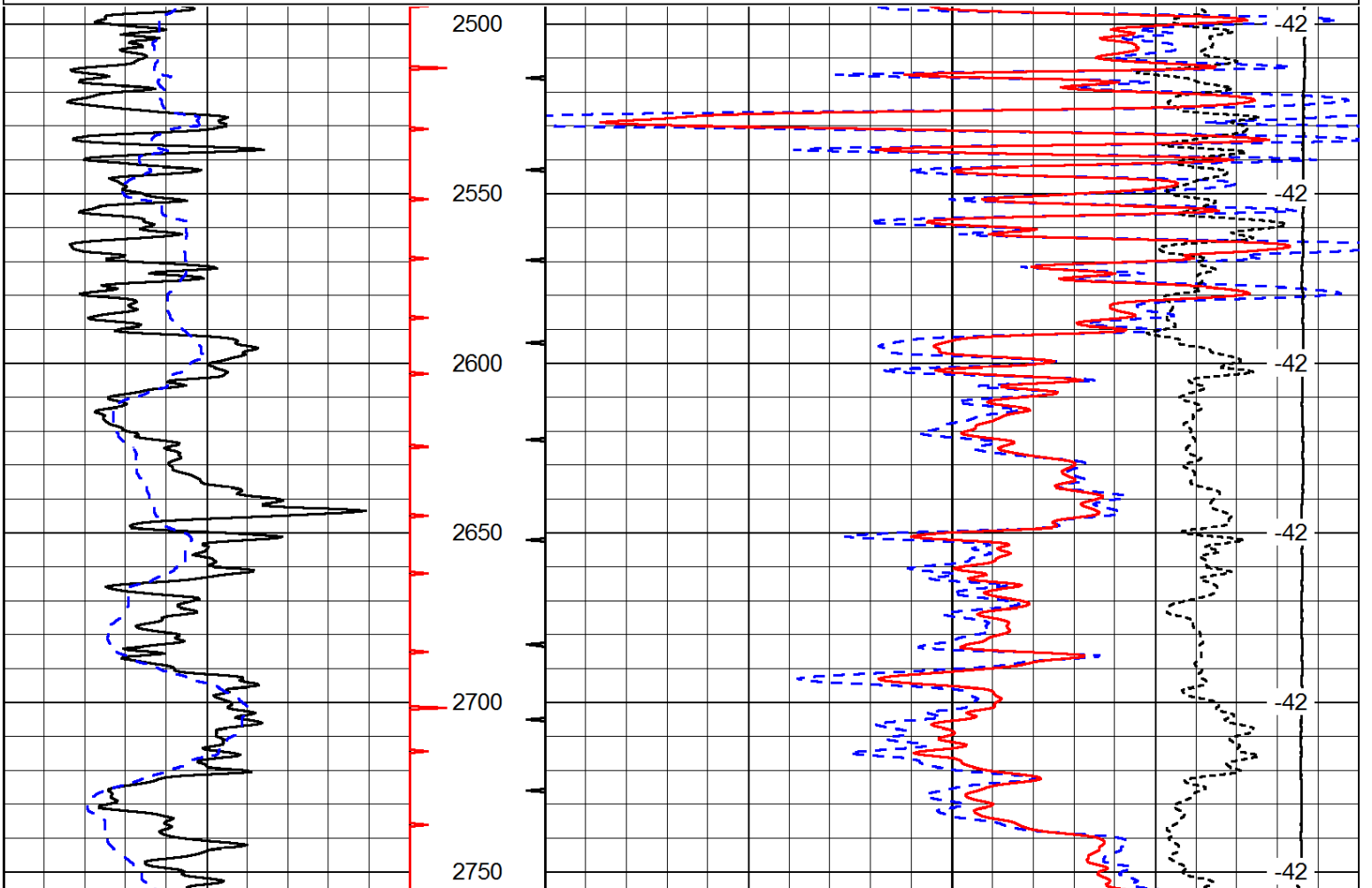
**Comments**

Thank you for using Pioneer Energy Services  
 www.pioneeres.com  
 785 625 3858  
 Pierceville Kansas  
 2 South, 1/2 East, 1 1/2 South, West Into

Database File: c:\warrior\data\amwar\_o'brate-finney #2-36\american\_warrior\_obrate\_finney\_2\_36hd.db  
 Dataset Pathname: DIL/awstk  
 Presentation Format: cdl  
 Dataset Creation: Thu Dec 11 05:14:25 2014  
 Charted by: Depth in Feet scaled 1:600

0	Gamma Ray	150
6	Caliper (GAPI)	16

30	Compensated Density	-10
2	Bulk Density	3
15000	Line Tension	0
-0.25	Correction	0.25
LSPD		



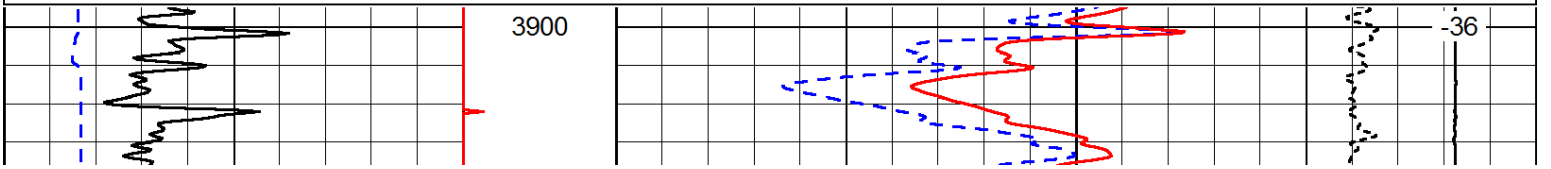
0	Gamma Ray	150
6	Caliper (GAPI)	16

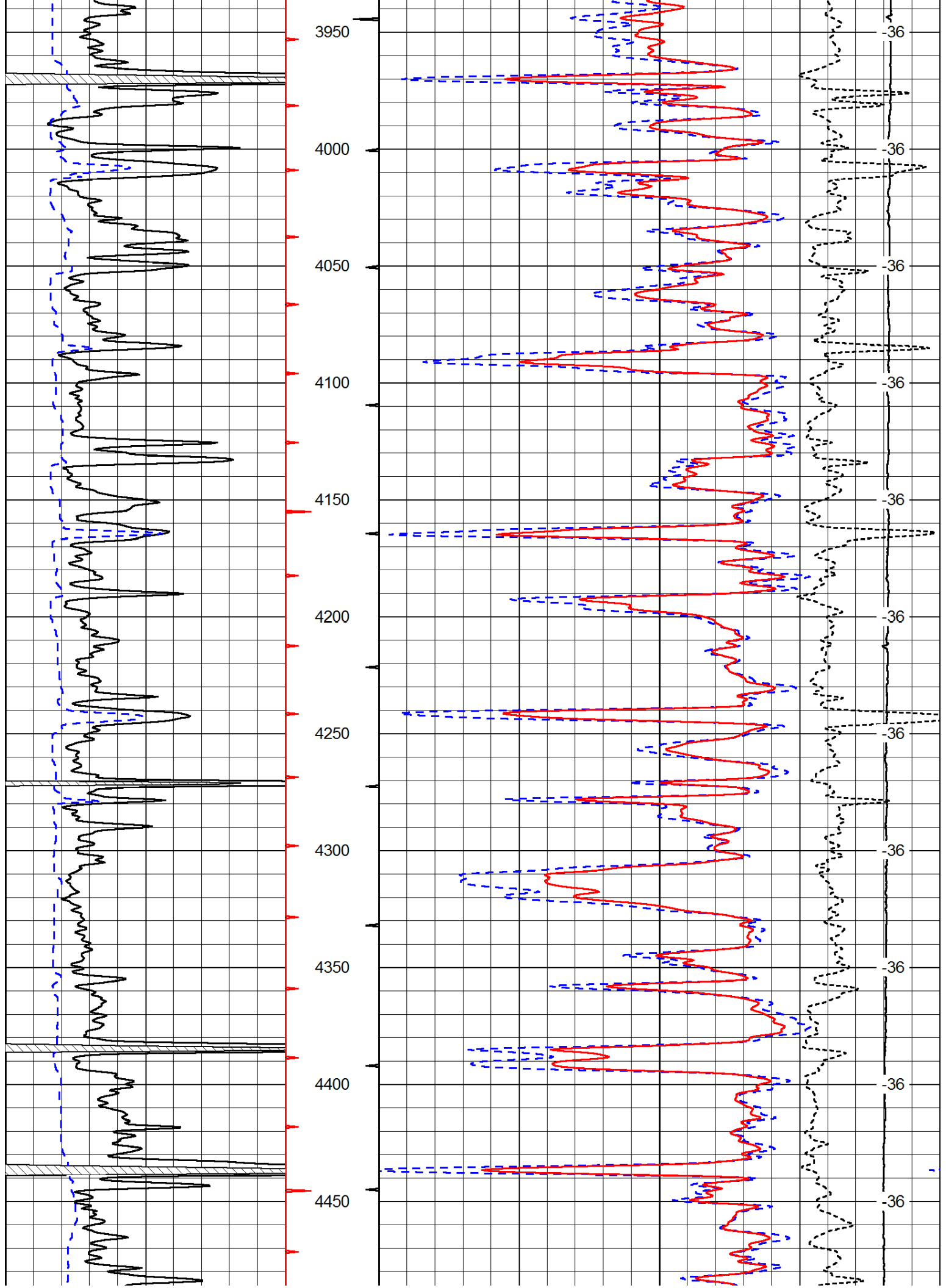
30	Compensated Density	-10
2	Bulk Density	3
15000	Line Tension	0
-0.25	Correction	0.25
LSPD		

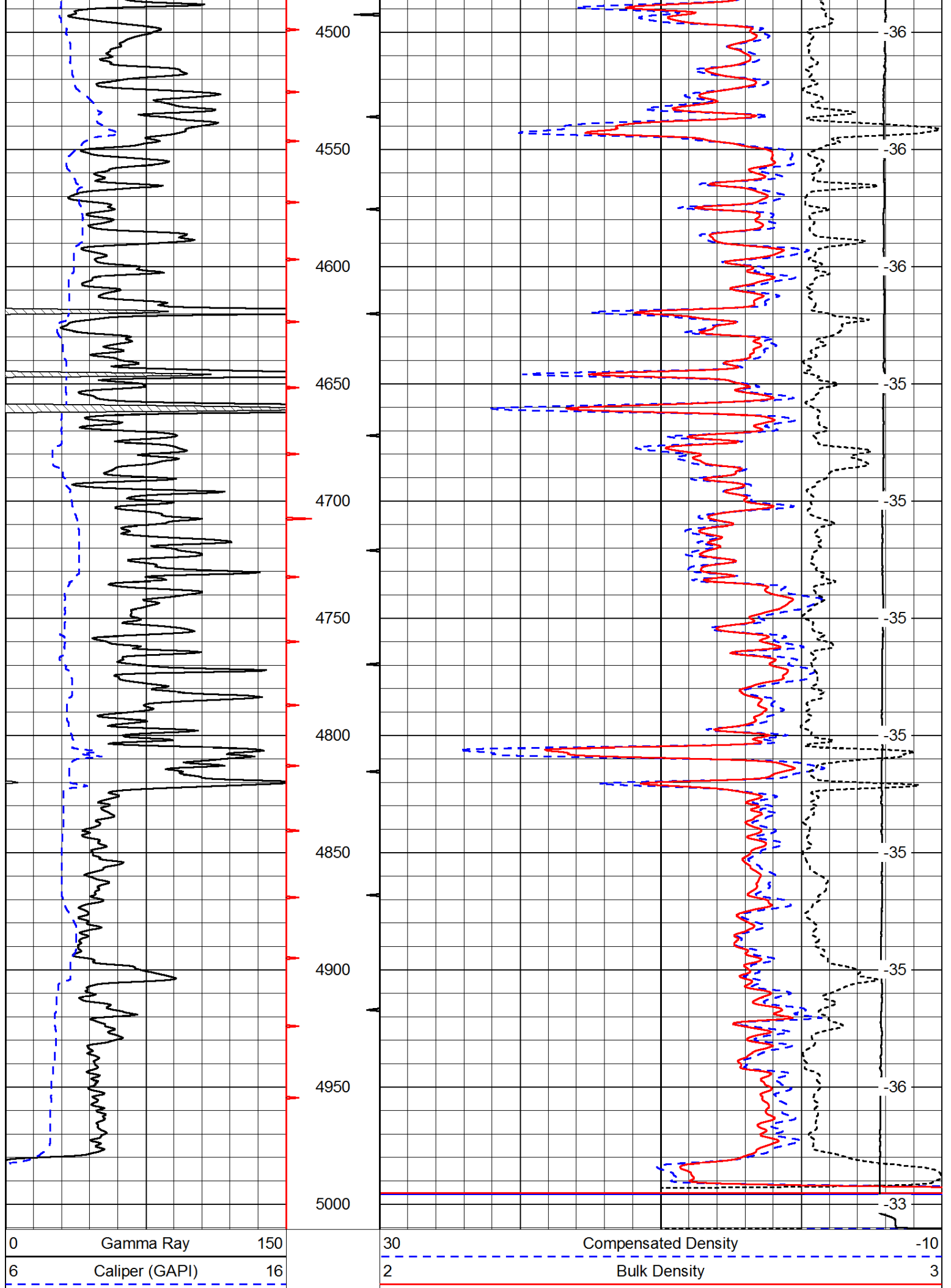
Database File: c:\warrior\data\amwar\_o'brate-finney #2-36\american\_warrior\_obrate\_finney\_2\_36hd.db  
 Dataset Pathname: DIL/awstk  
 Presentation Format: cdl  
 Dataset Creation: Thu Dec 11 05:14:25 2014  
 Charted by: Depth in Feet scaled 1:600

0	Gamma Ray	150
6	Caliper (GAPI)	16

30	Compensated Density	-10
2	Bulk Density	3
15000	Line Tension	0
-0.25	Correction	0.25
LSPD		



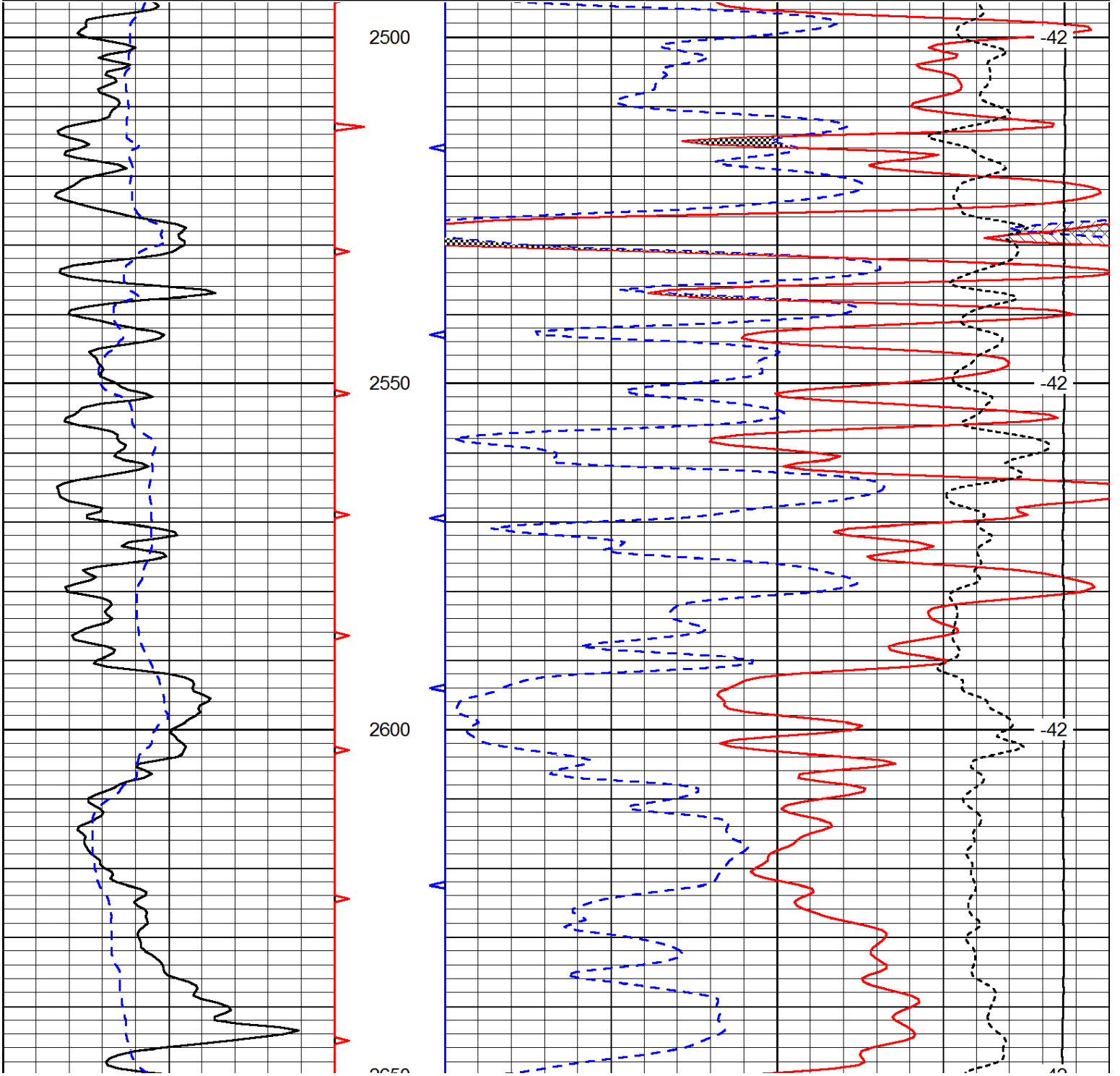


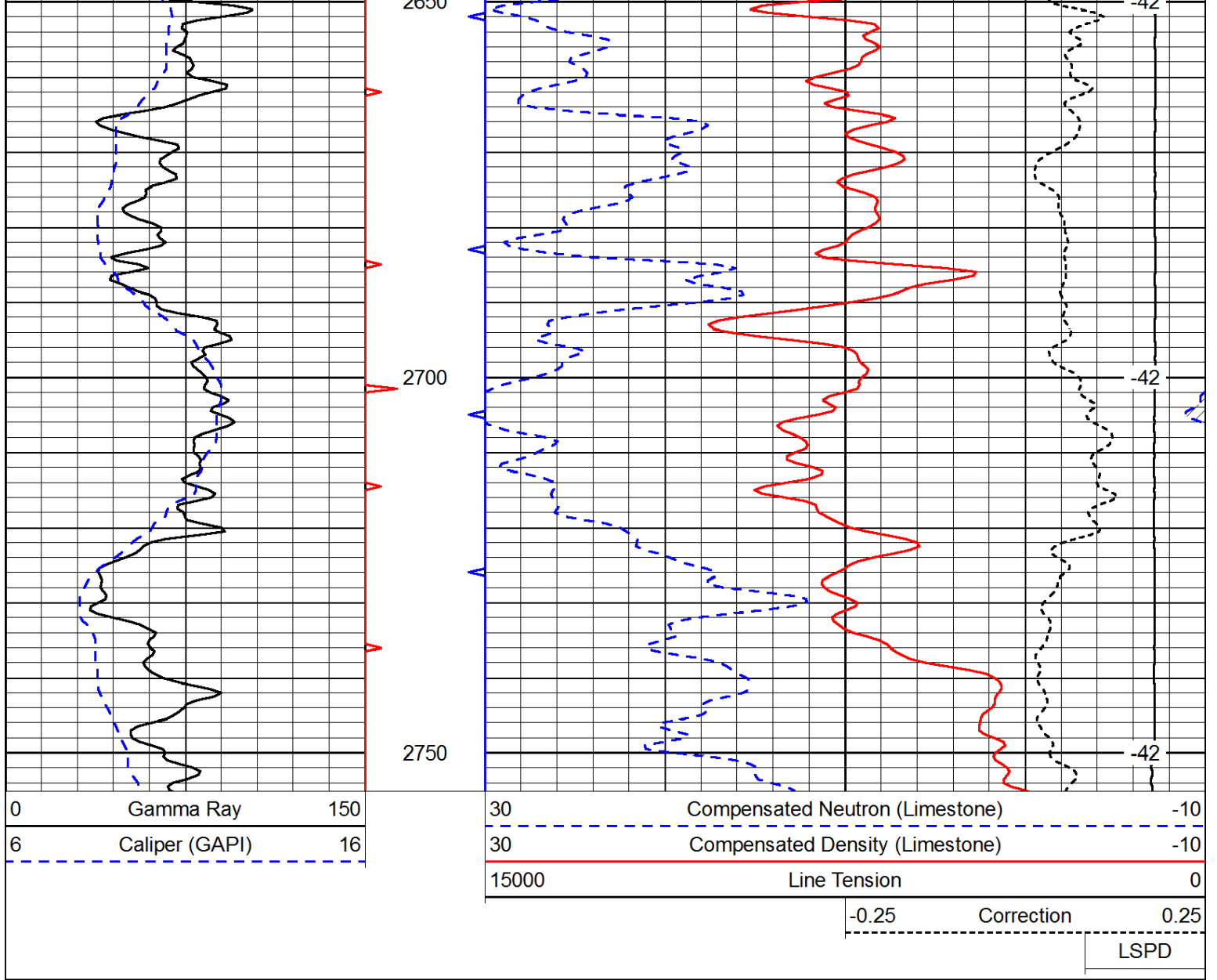


15000	Line Tension	0
-0.25	Correction	0.25
		LSPD

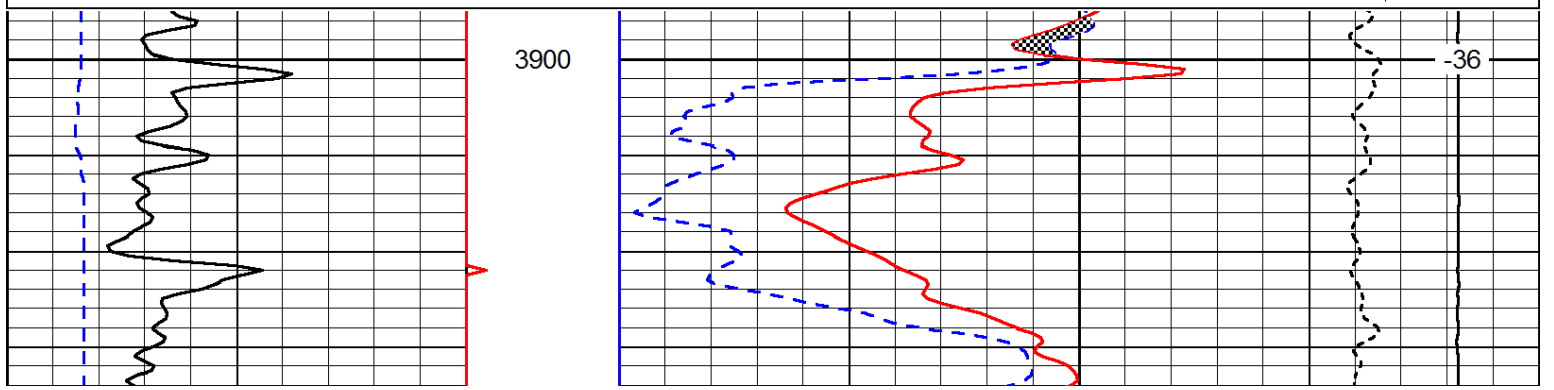
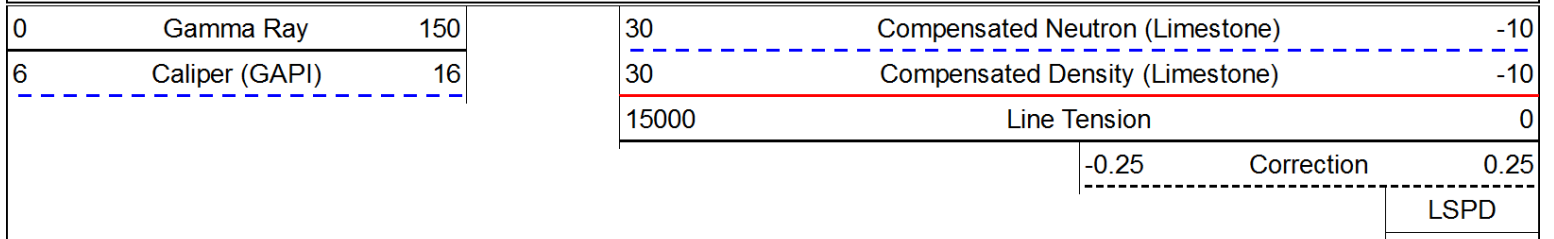
Database File: c:\warrior\data\amwar\_o\brate-finney #2-36\american\_warrior\_obrate\_finney\_2\_36hd.db  
 Dataset Pathname: DIL/awstk  
 Presentation Format: cndlspec  
 Dataset Creation: Thu Dec 11 05:14:25 2014  
 Charted by: Depth in Feet scaled 1:240

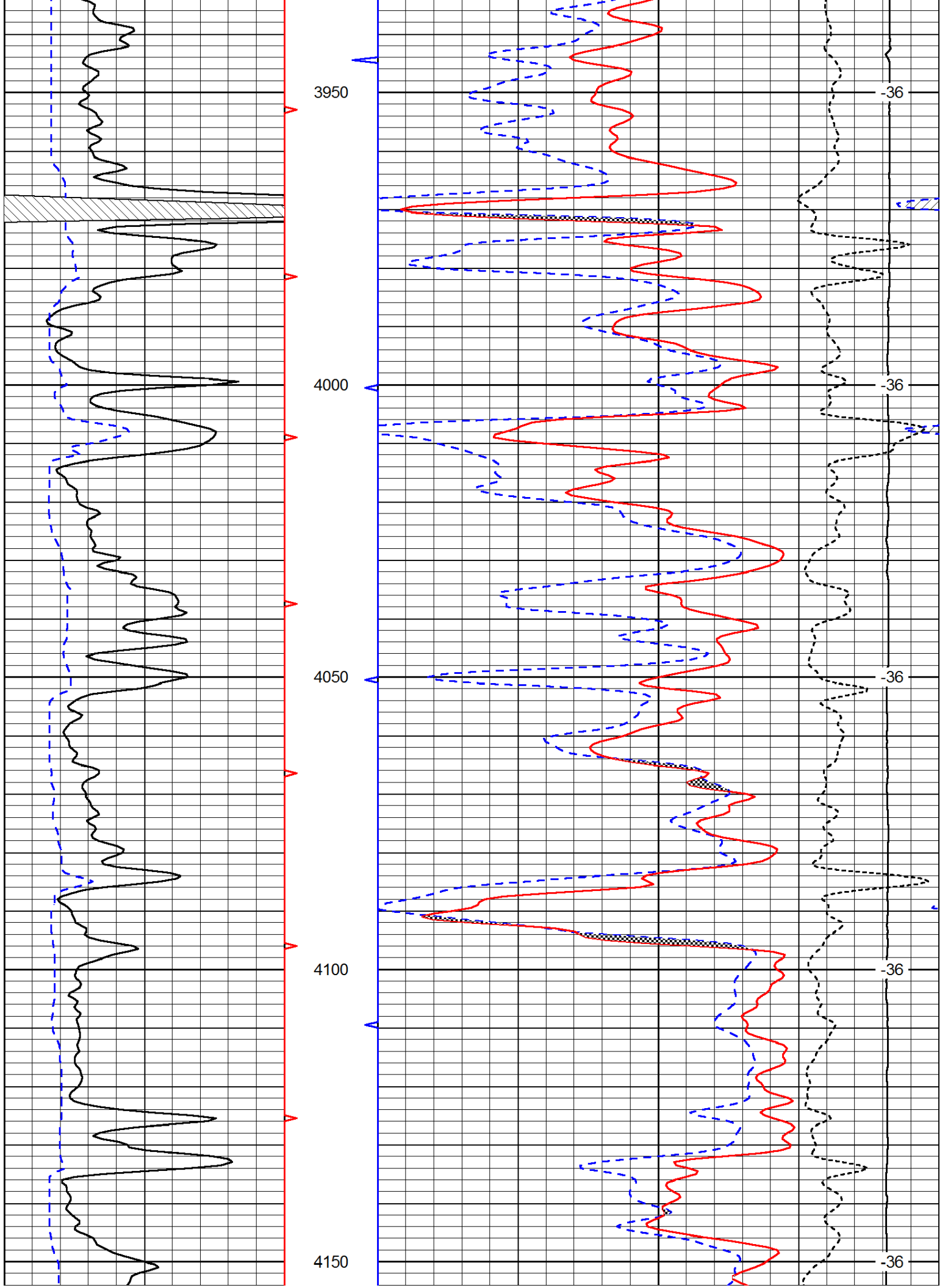
0	Gamma Ray	150	30	Compensated Neutron (Limestone)	-10
6	Caliper (GAPI)	16	30	Compensated Density (Limestone)	-10
			15000	Line Tension	0
			-0.25	Correction	0.25
					LSPD

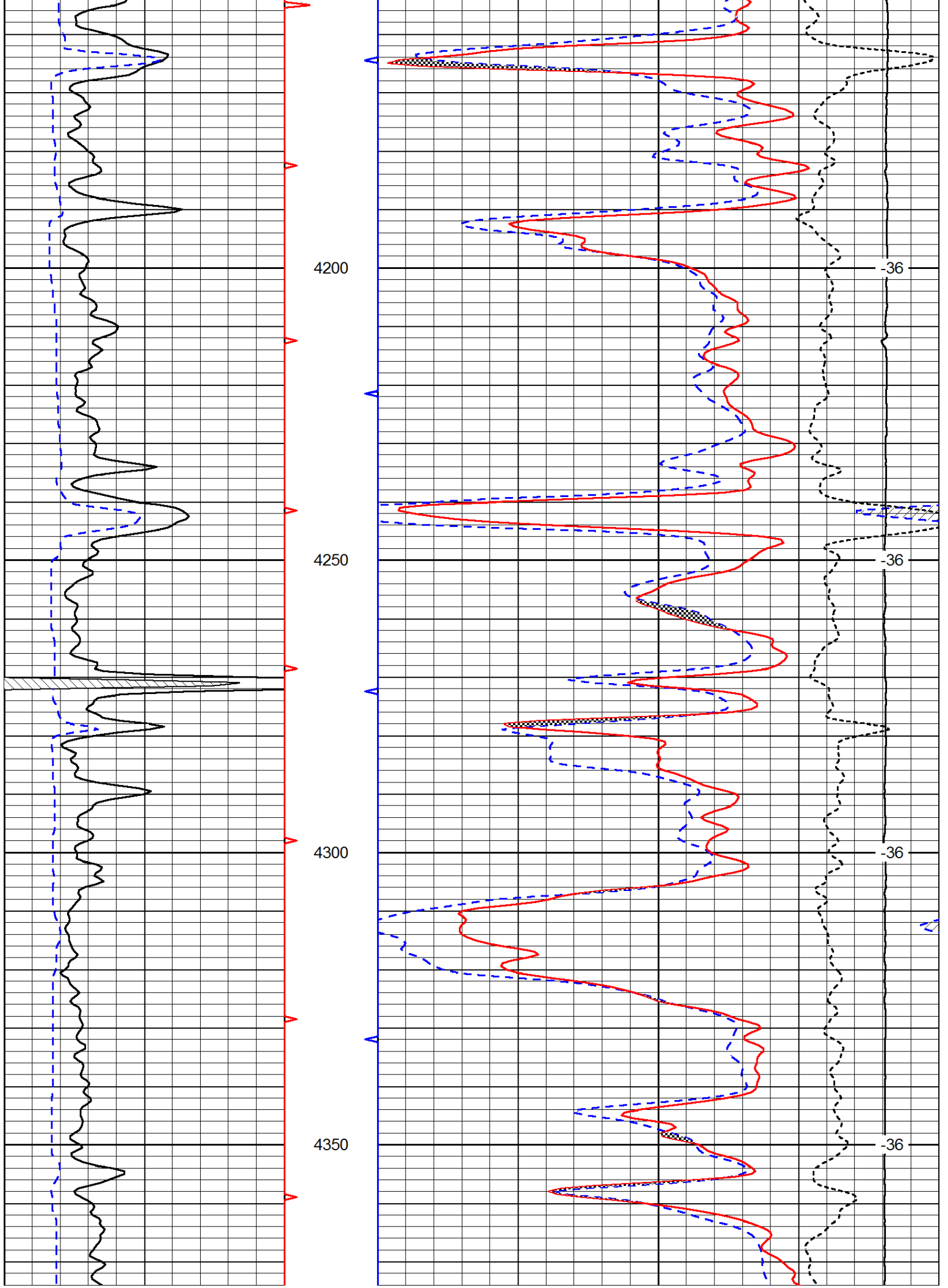


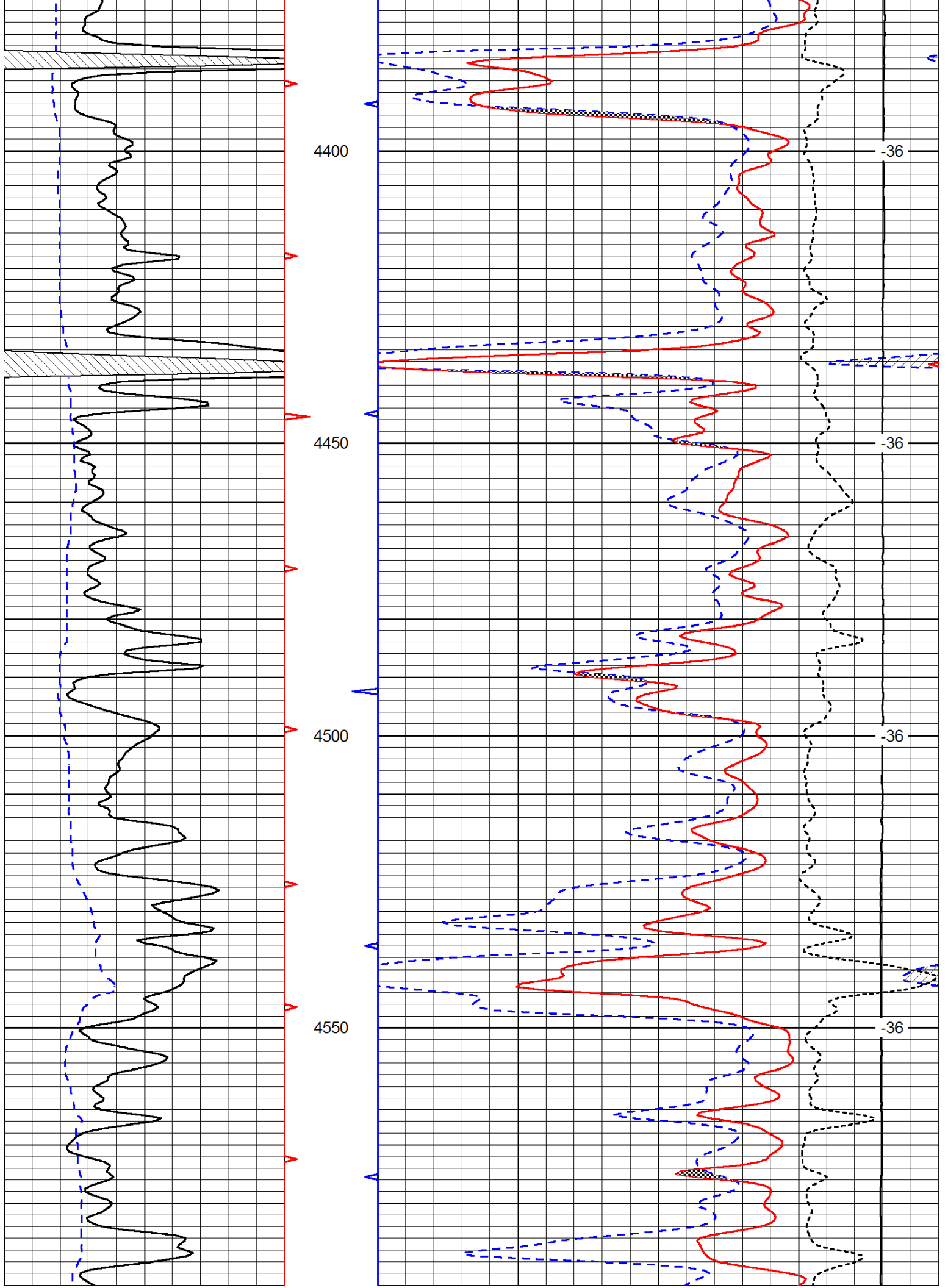


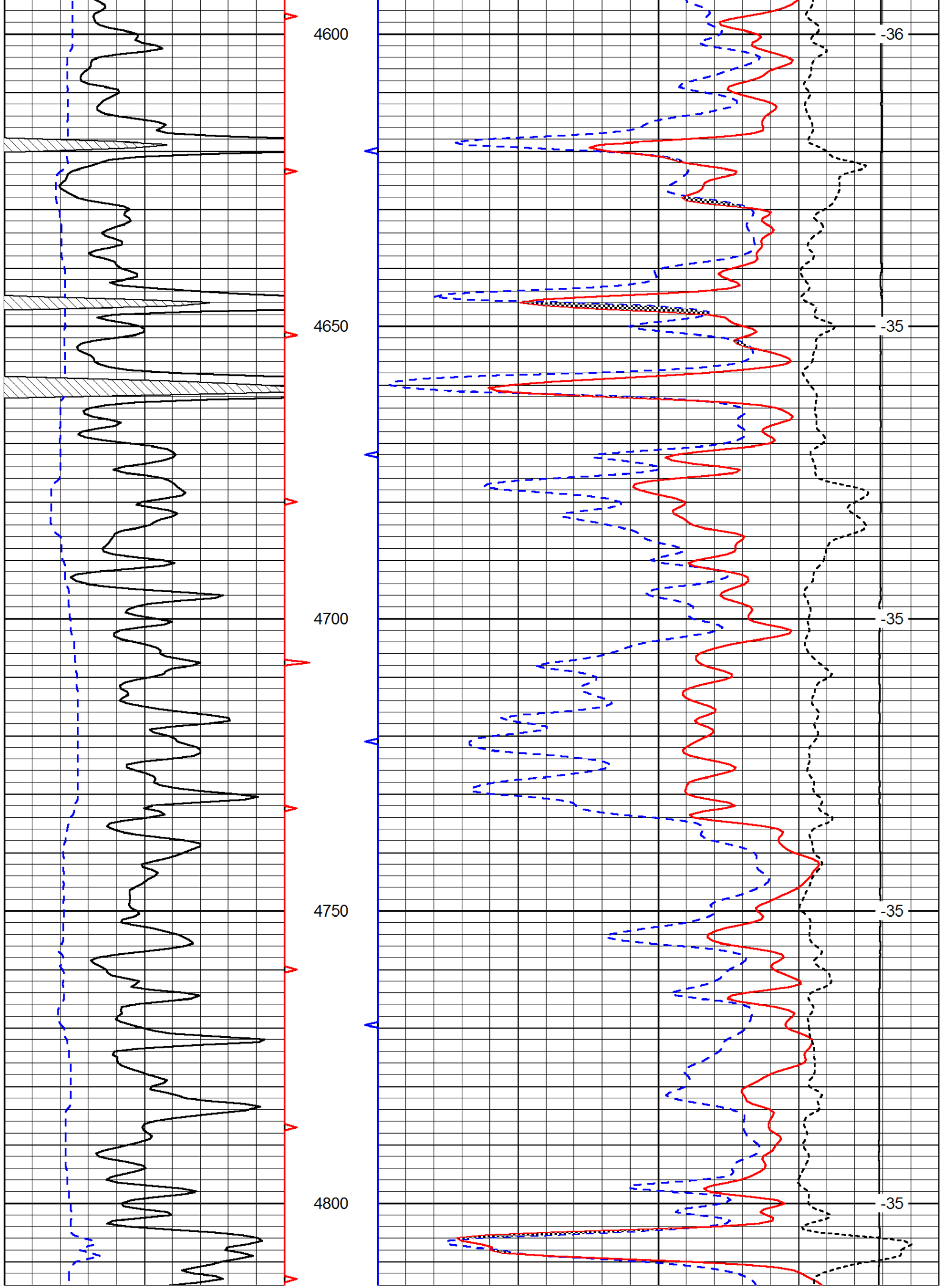
Database File: c:\warrior\data\amwar\_o'brate-finney #2-36\american\_warrior\_obrate\_finney\_2\_36hd.db  
 Dataset Pathname: DIL/awstk  
 Presentation Format: cndlspec  
 Dataset Creation: Thu Dec 11 05:14:25 2014  
 Charted by: Depth in Feet scaled 1:240

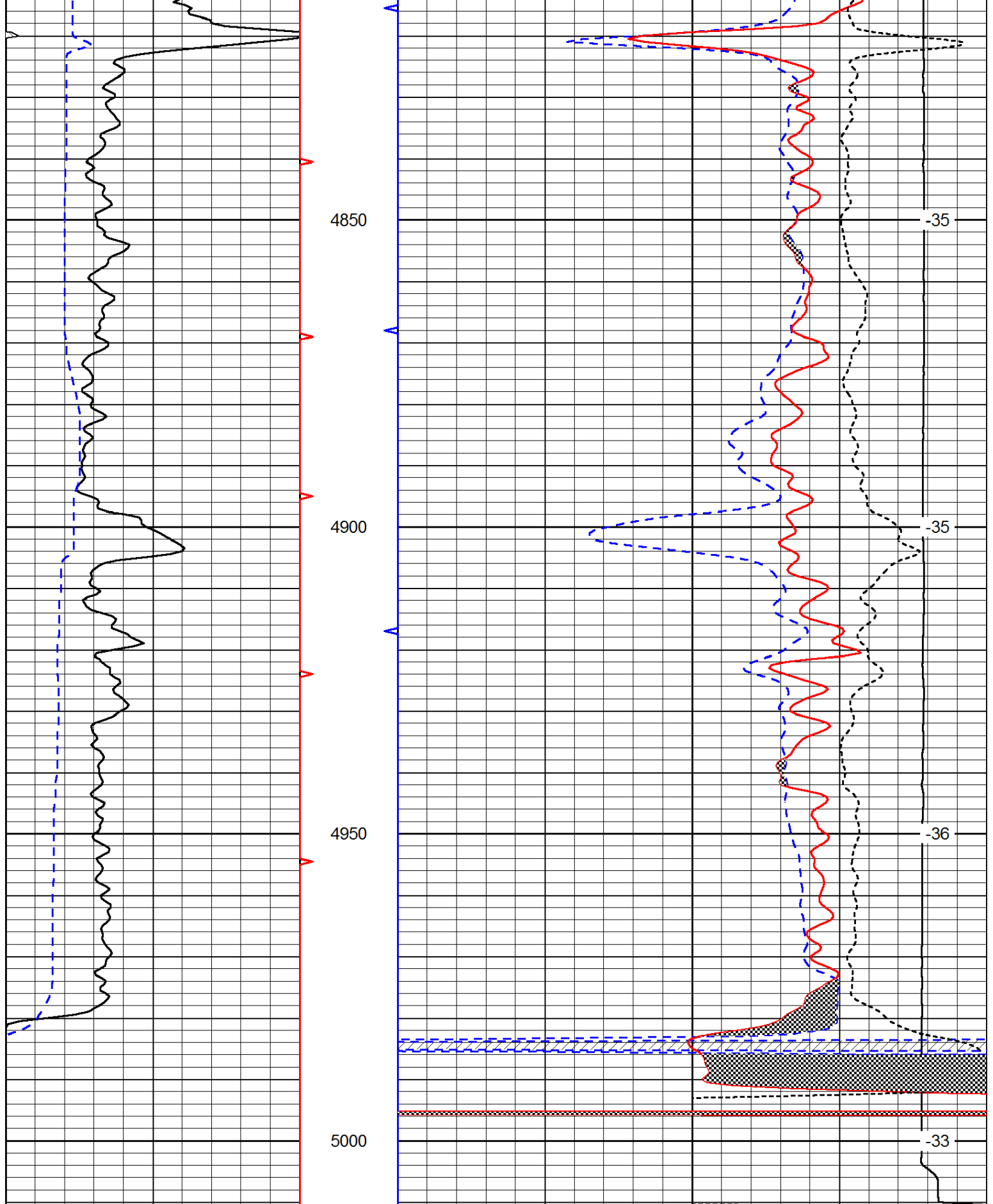












0	Gamma Ray	150
6	Caliper (GAPI)	16

30	Compensated Neutron (Limestone)	-10
30	Compensated Density (Limestone)	-10
15000	Line Tension	0
-0.25	Correction	0.25
	LSPD	

