



Pioneer Energy Services

Dual Induction Log

15-055-22,363-00-00

API No.

Company **American Warrior, Inc.**

Well **O'Brate-Finney #2-36**

Field **Unknown**

County **Finney** State **Kansas**

Location **597' FNL & 1828' FWL**

Sec: **36** Twp: **25S** Rge: **31W**

Permanent Datum **Ground Level** Elevation **2781**

Log Measured From **Kelly Bushing** 13 Ft. Above Perm. Datum

Drilling Measured From **Frontkelly Bushing**

Other Services
CNL/CDL
MEL

Elevation

K.B. 2794

D.F. 2781

G.L. 2781

Date **12/11/2014**

Run Number **One**

Depth Driller **5000**

Depth Logger **5004**

Bottom Logged Interval **5003**

Top Log Interval **1650**

Casing Driller **8.625 @ 1700**

Casing Logger **1696**

Bit Size **7.875**

Type Fluid in Hole **Chemical**

Salinity, ppm CL **2,200**

Density / Viscosity **9.35 54**

pH / Fluid Loss **9.5 8.8**

Source of Sample **Flowline**

Rm @ Meas. Temp **.90 @ 60**

Rmf @ Meas. Temp **.66 @ 60**

Rmc @ Meas. Temp **1.22 @ 60**

Source of Rmf / Rmc **Charts**

Rm @ BHT **.43 @ 126**

Operating Rig Time **4 Hours**

Max Rec. Temp. F **126**

Equipment Number **108**

Location **Hays**

Recorded By **J. Henrickson**

Witnessed By **Kevin Timson**

<<< Fold Here >>>

All interpretations are opinions based on inferences from electrical or other measurements and we cannot and do not guarantee the accuracy or correctness of any interpretation, and we shall not, except in the case of gross or willful negligence on our part, be liable or responsible for any loss, costs, damages, or expenses incurred or sustained by anyone resulting from any interpretation made by any of our officers, agents or employees. These interpretations are also subject to our general terms and conditions set out in our current Price Schedule.

Comments

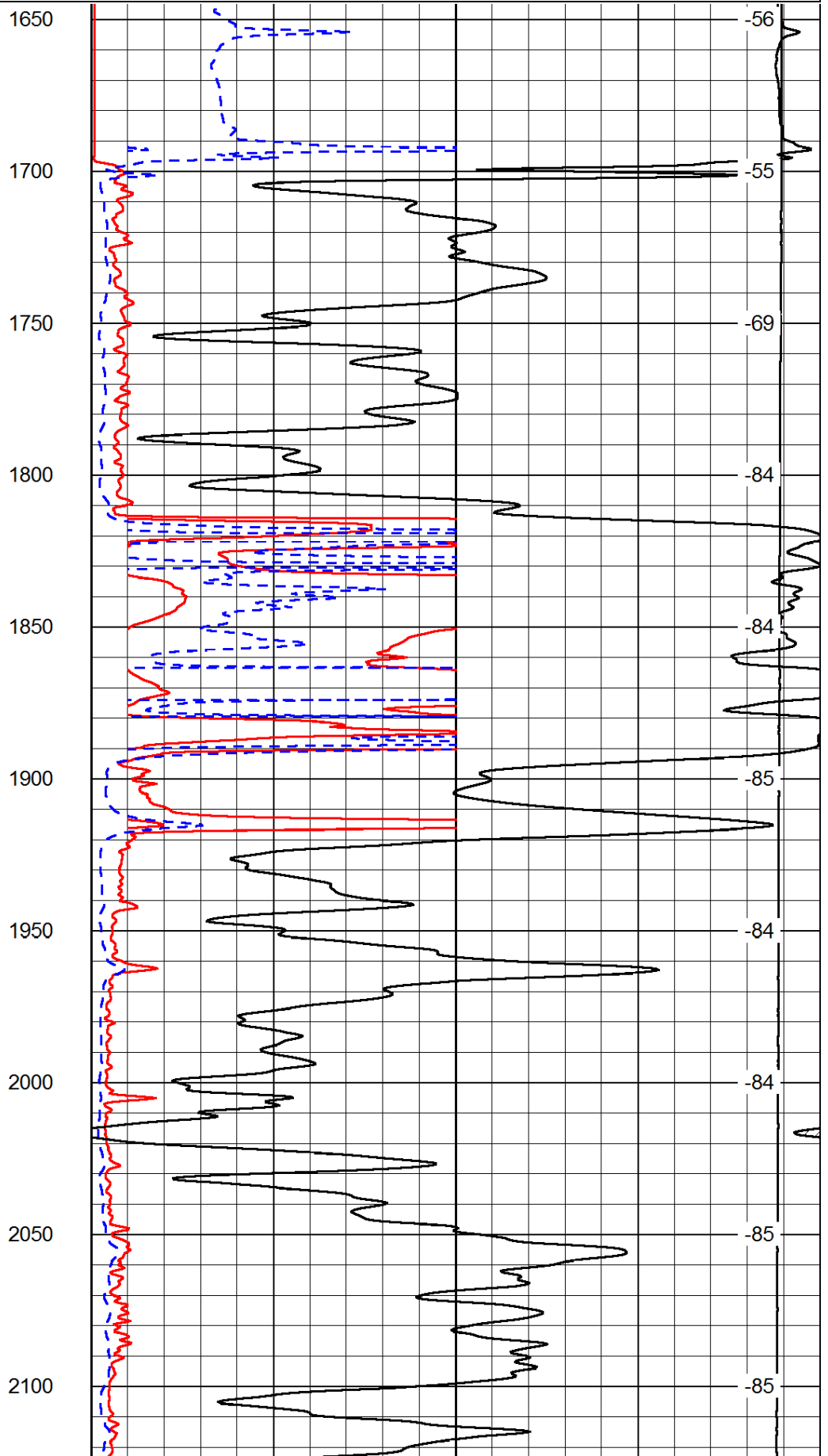
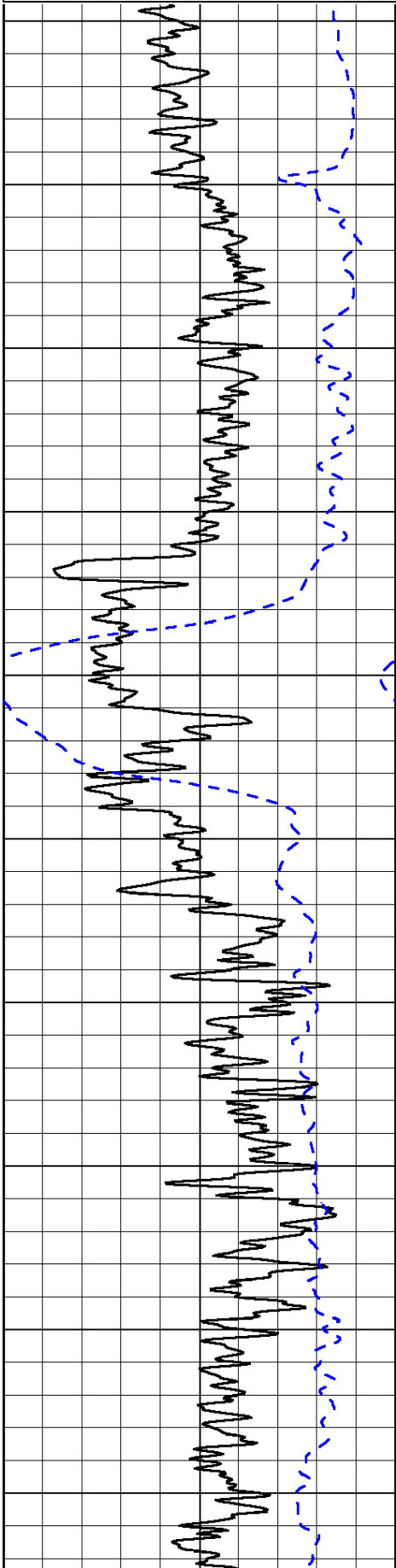
Thank you for using Pioneer Energy Services
www.pioneeres.com
 785 625 3858
 Pierceville Kansas
 2 South, 1/2 East, 1 1/2 South, West Into

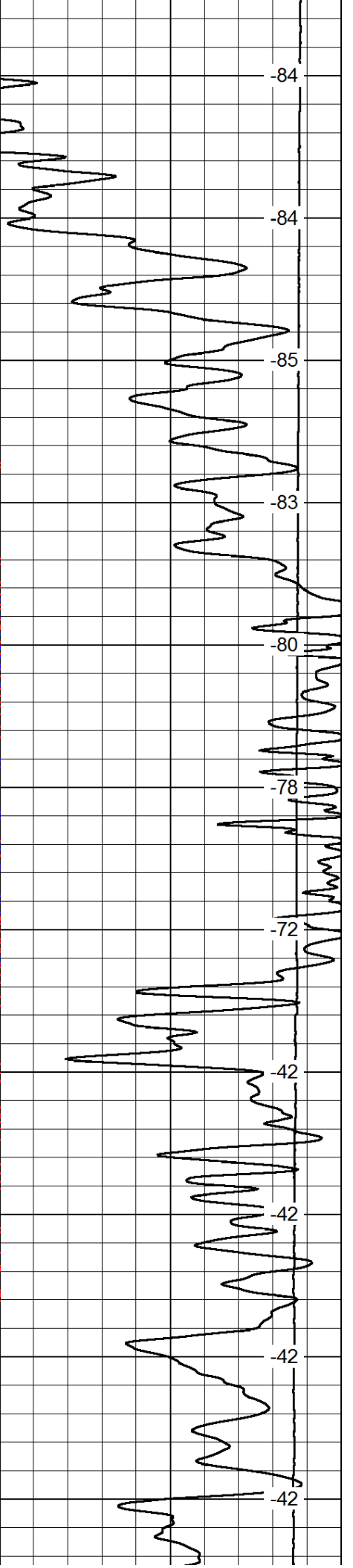
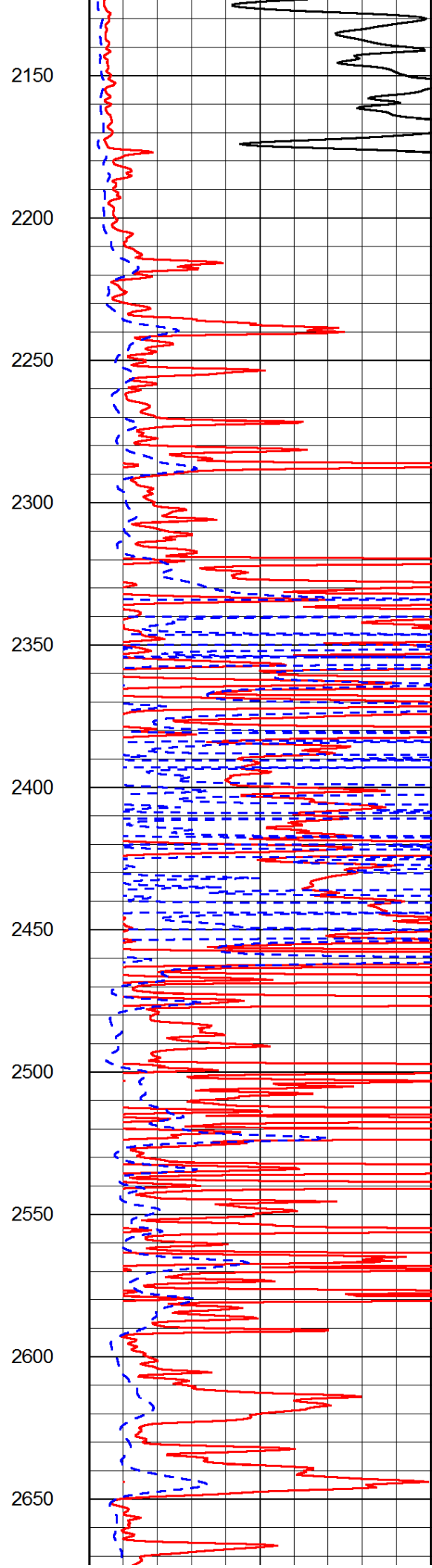
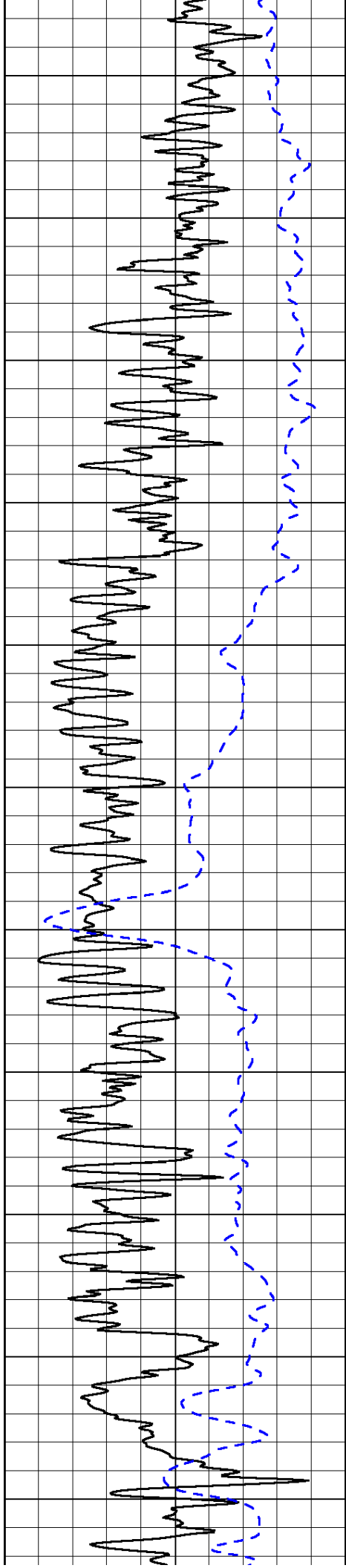
Database File: c:\warrior\data\amwar_o'brate-finney #2-36\american_warrior_obrate_finney_2_36hd.db
 Dataset Pathname: DIL\awstk
 Presentation Format: dil2in
 Dataset Creation: Thu Dec 11 05:14:25 2014
 Charted by: Depth in Feet scaled 1:600

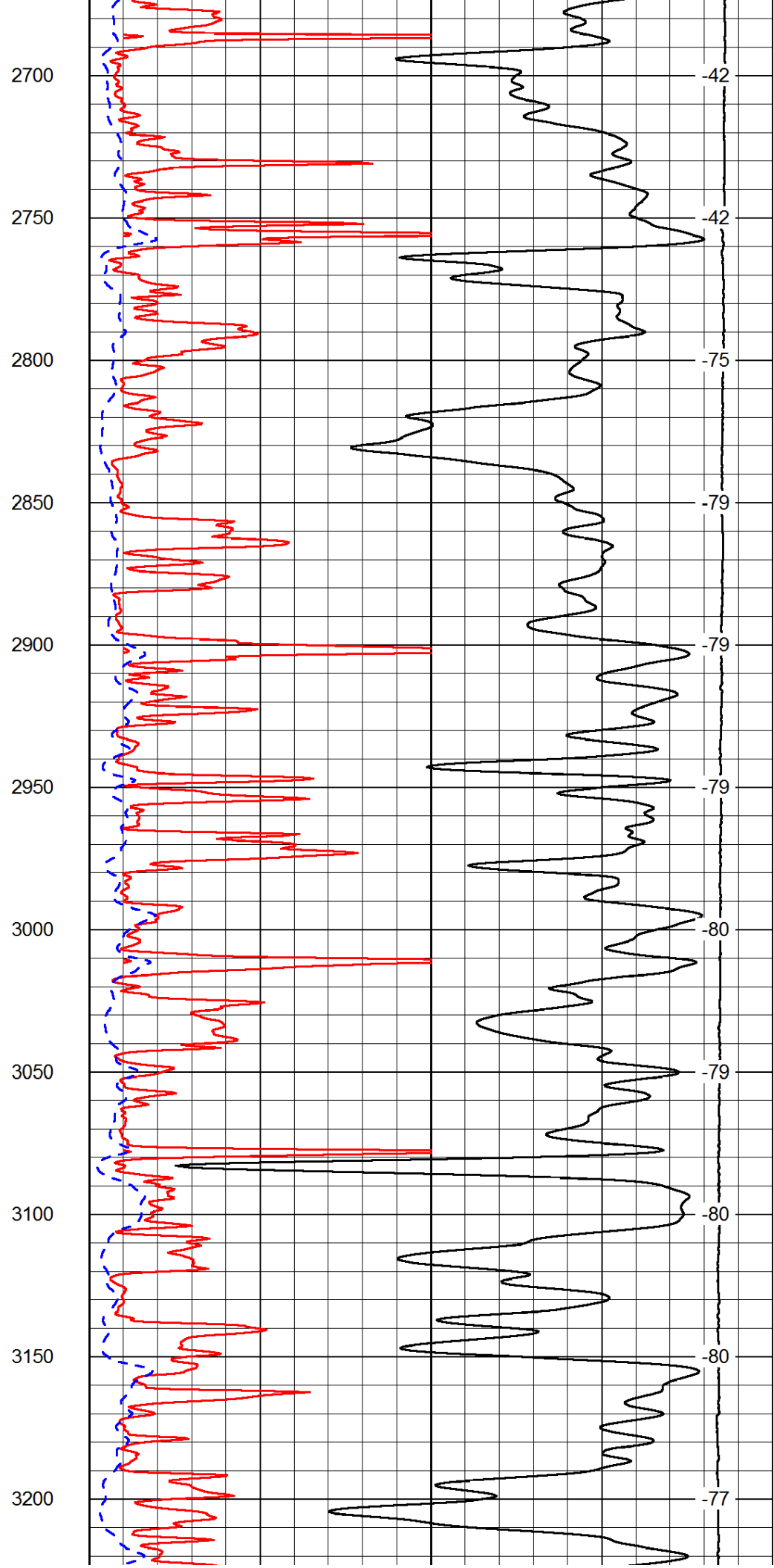
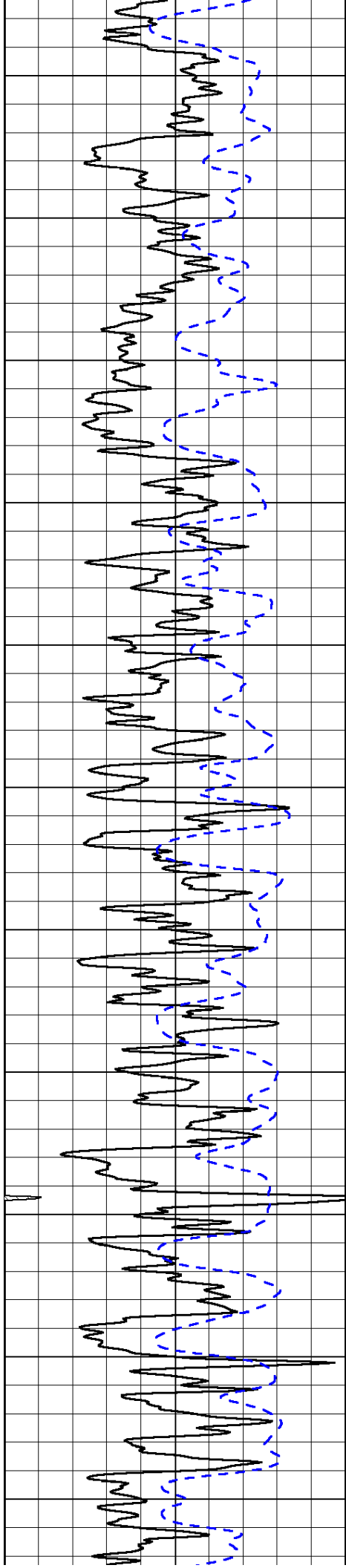
0 Gamma Ray 150
 -200 SP (mV) 0

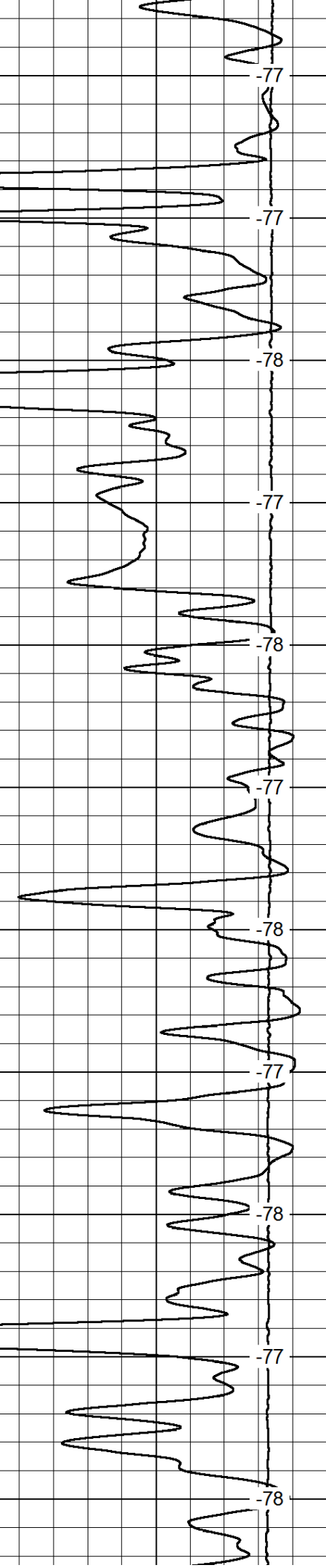
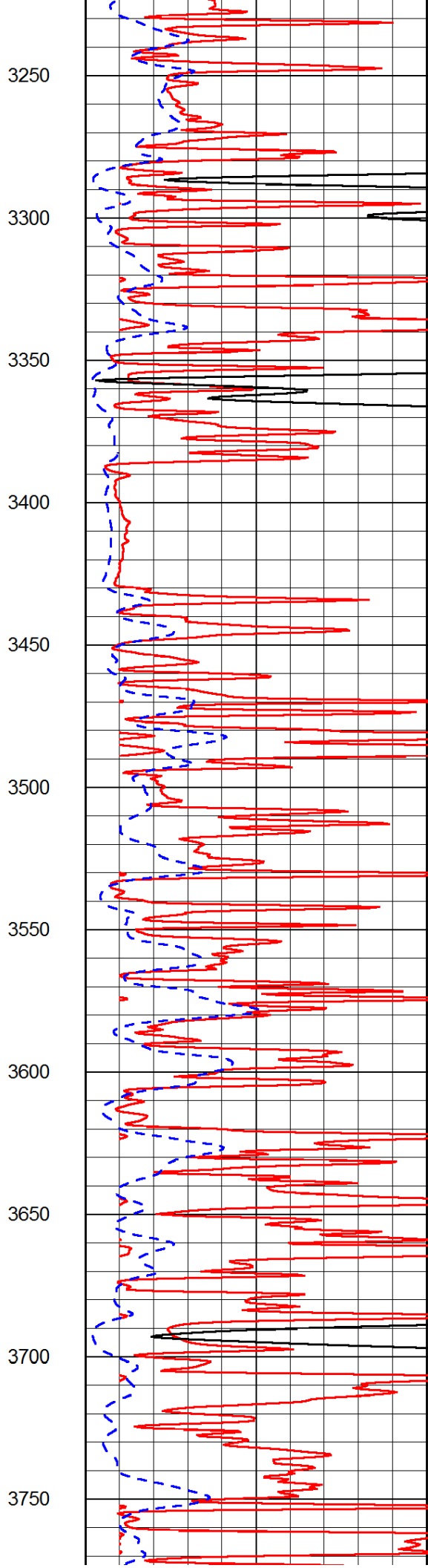
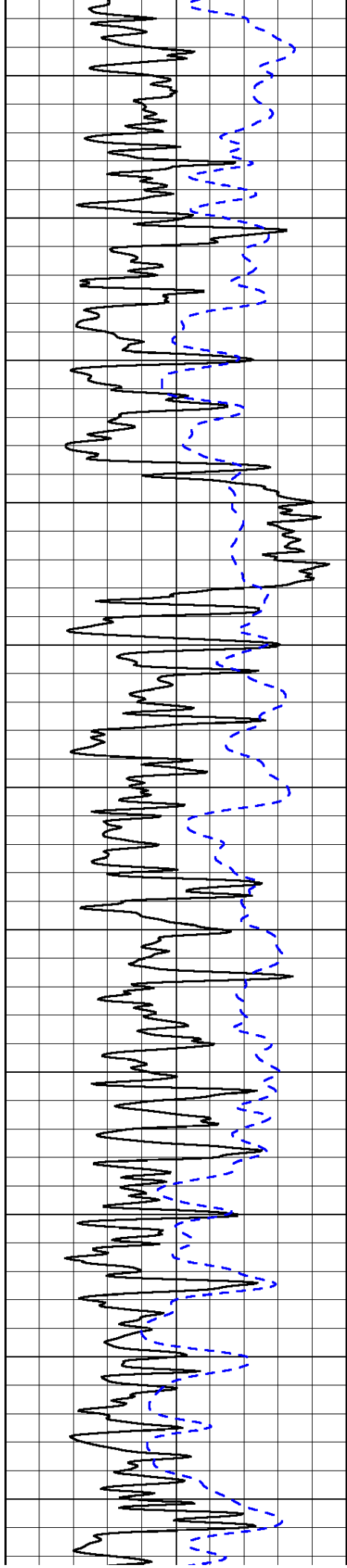
0 Shallow Resistivity 50
 0 Deep Resistivity 50
 1000 Conductivity 0
 15000 Line Tension 0
 50 Shallow Resistivity 500
 50 Deep Resistivity 500

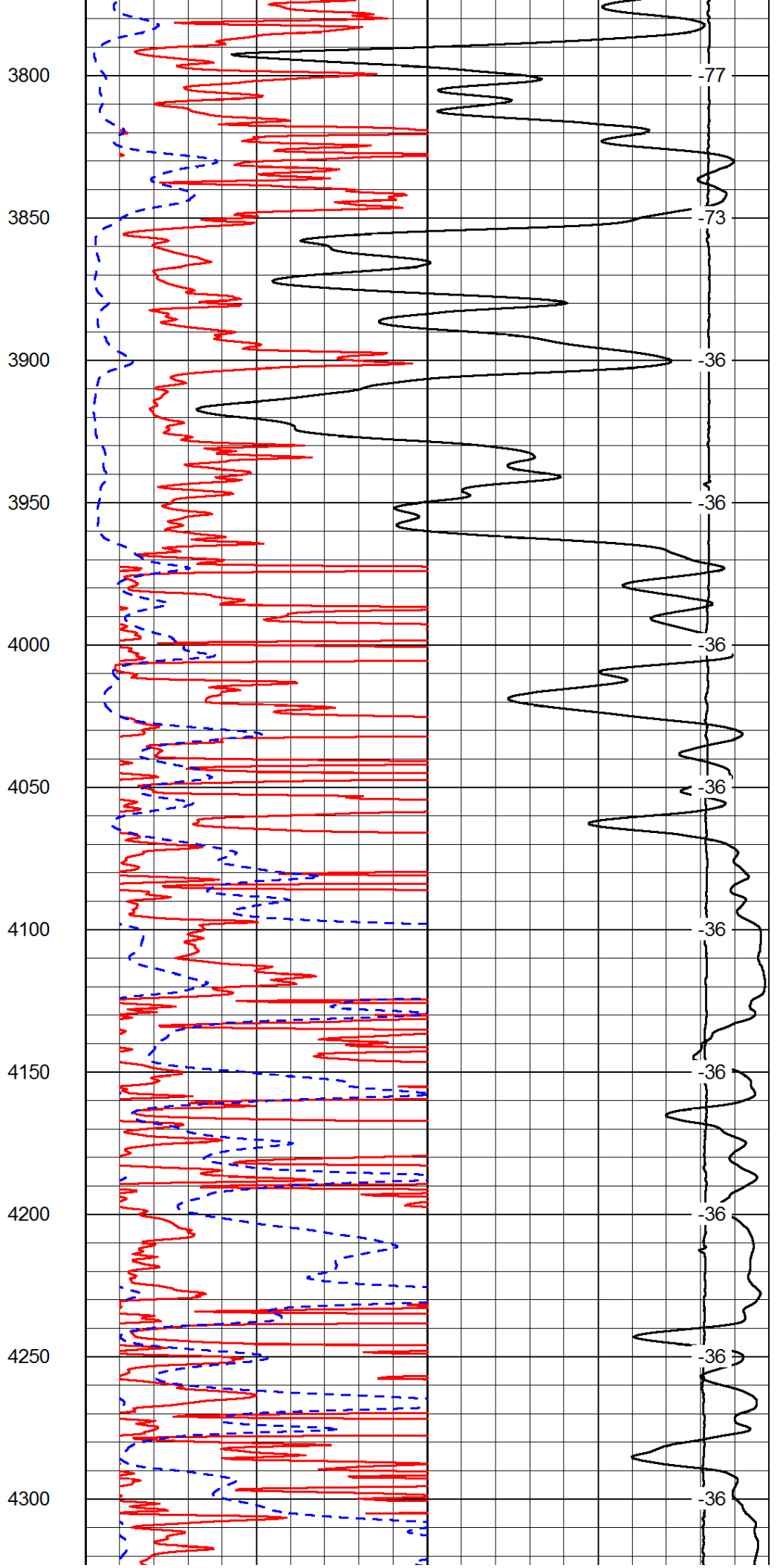
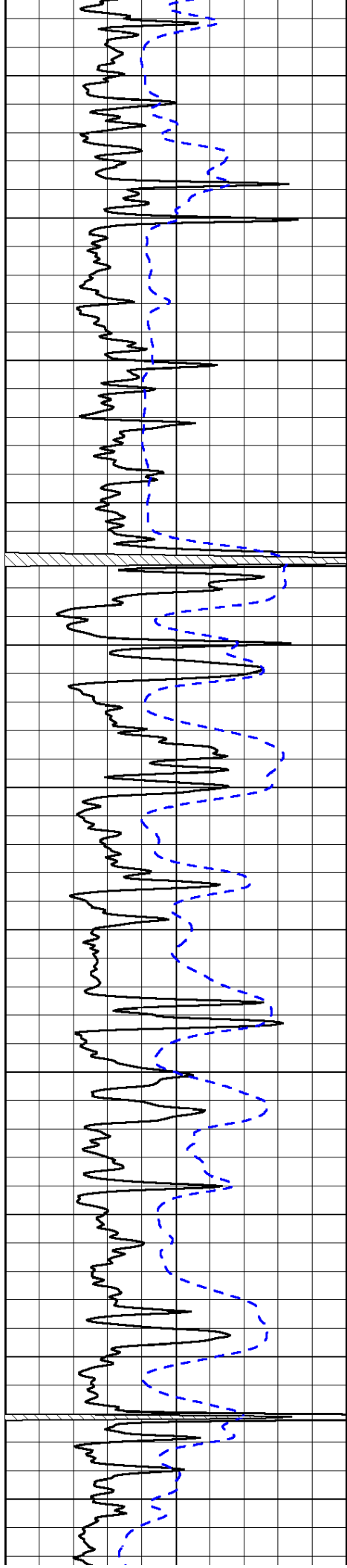
LSPD

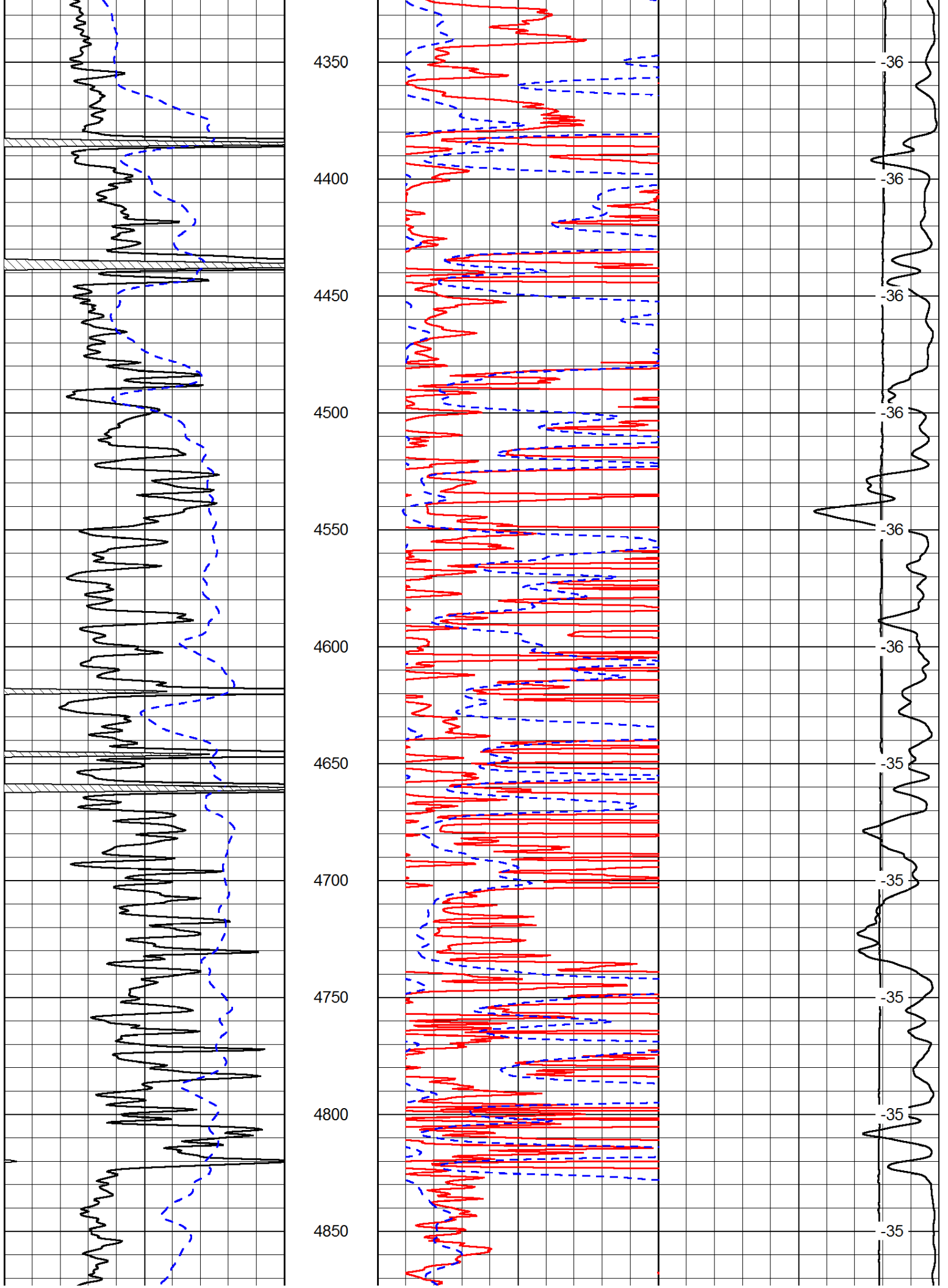


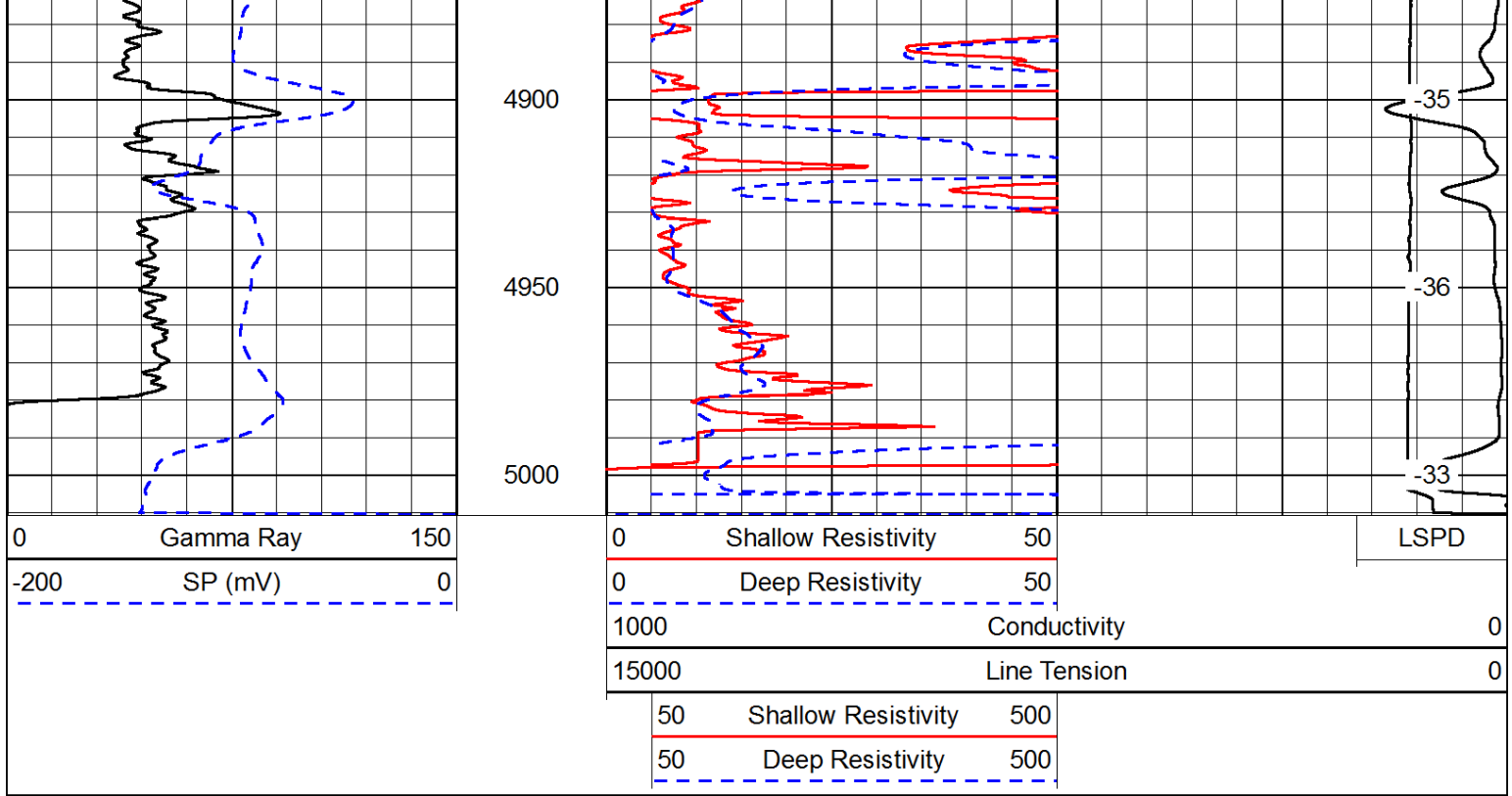




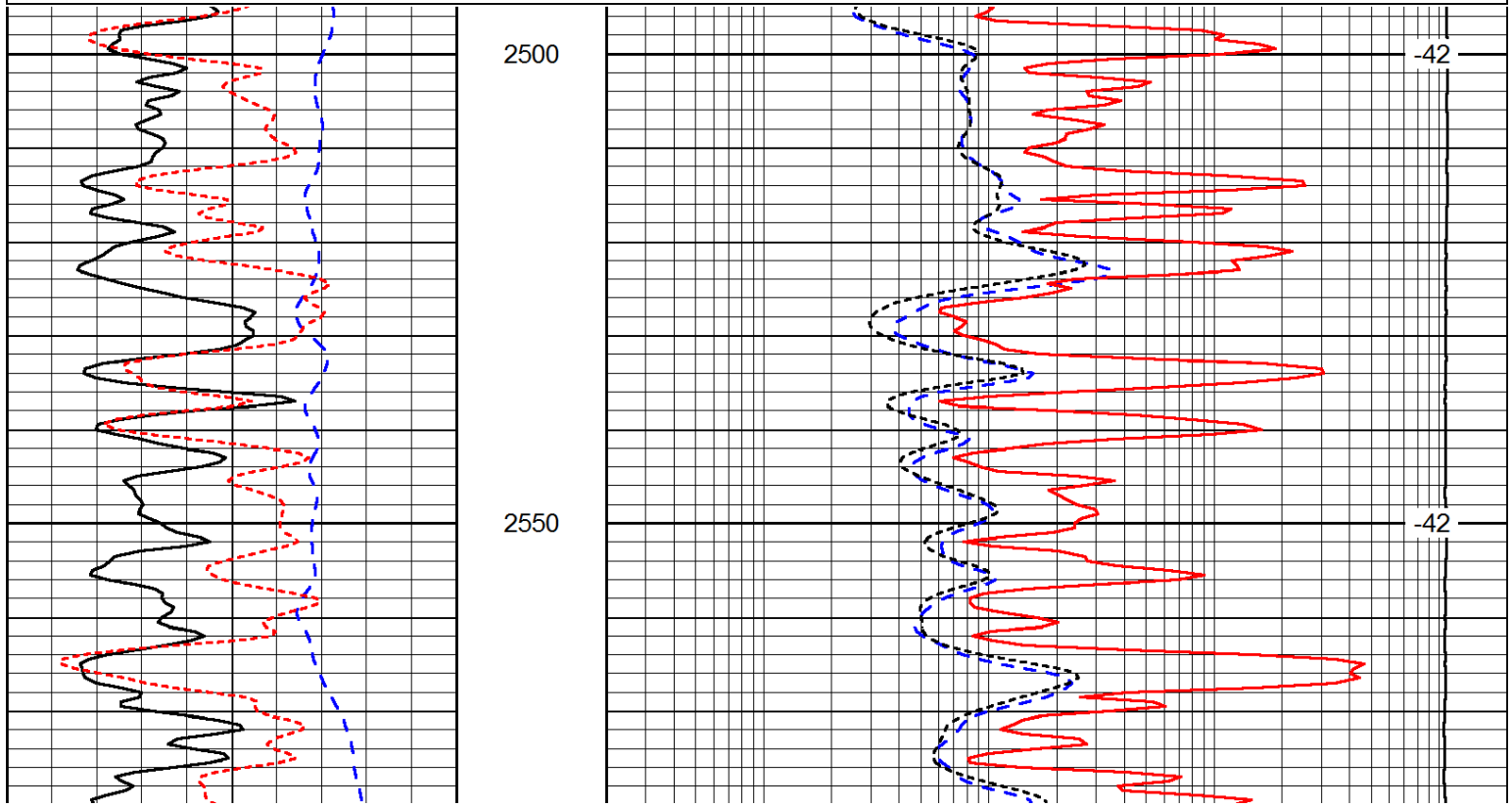
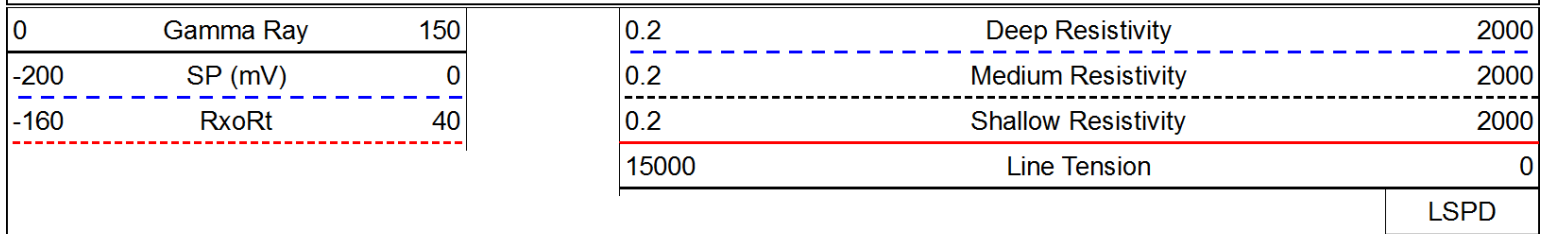


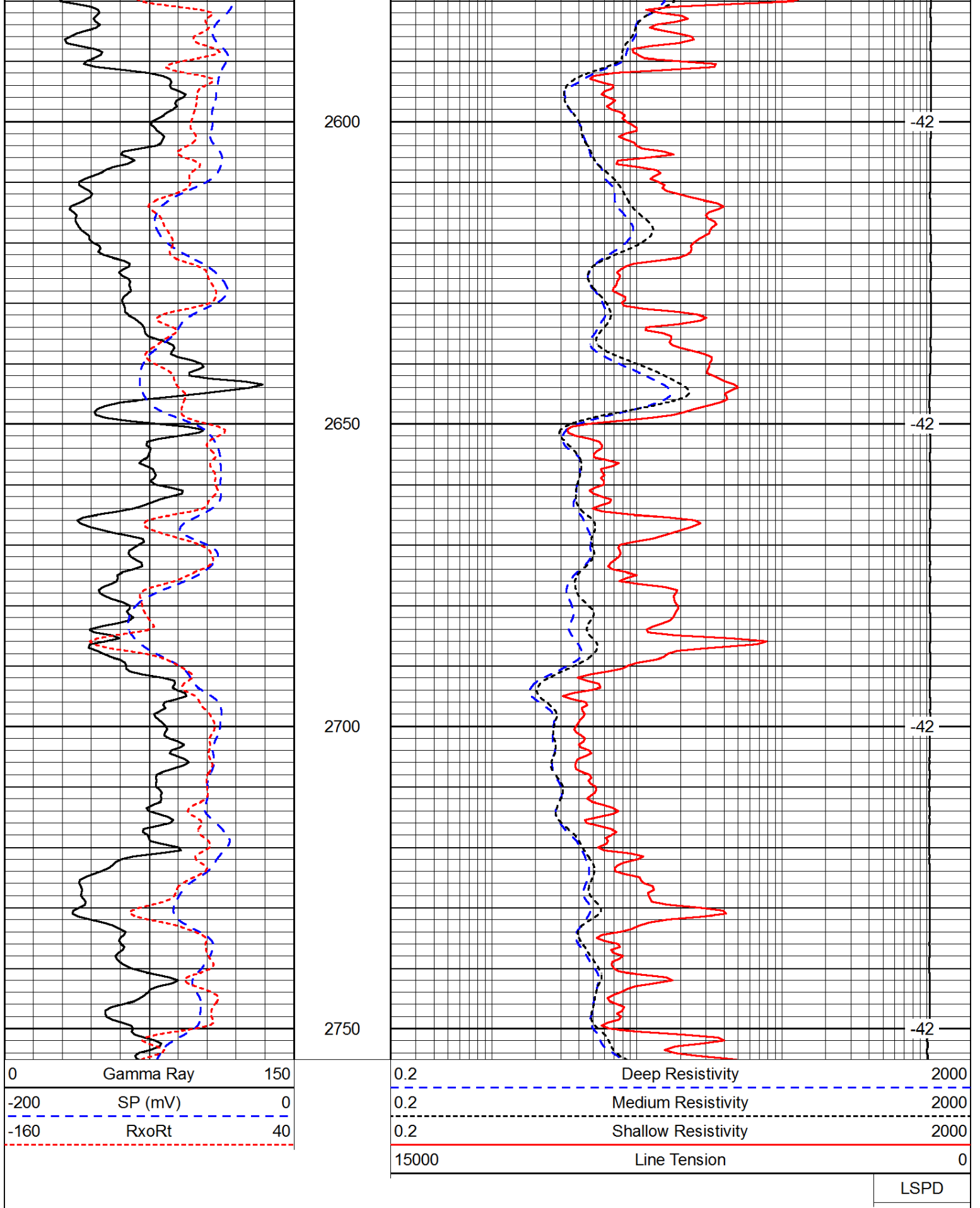






Database File: c:\warrior\data\amwar_o'brate-finney #2-36\american_warrior_obrate_finney_2_36hd.db
 Dataset Pathname: DIL/awstk
 Presentation Format: dil
 Dataset Creation: Thu Dec 11 05:14:25 2014
 Charted by: Depth in Feet scaled 1:240





LSPD

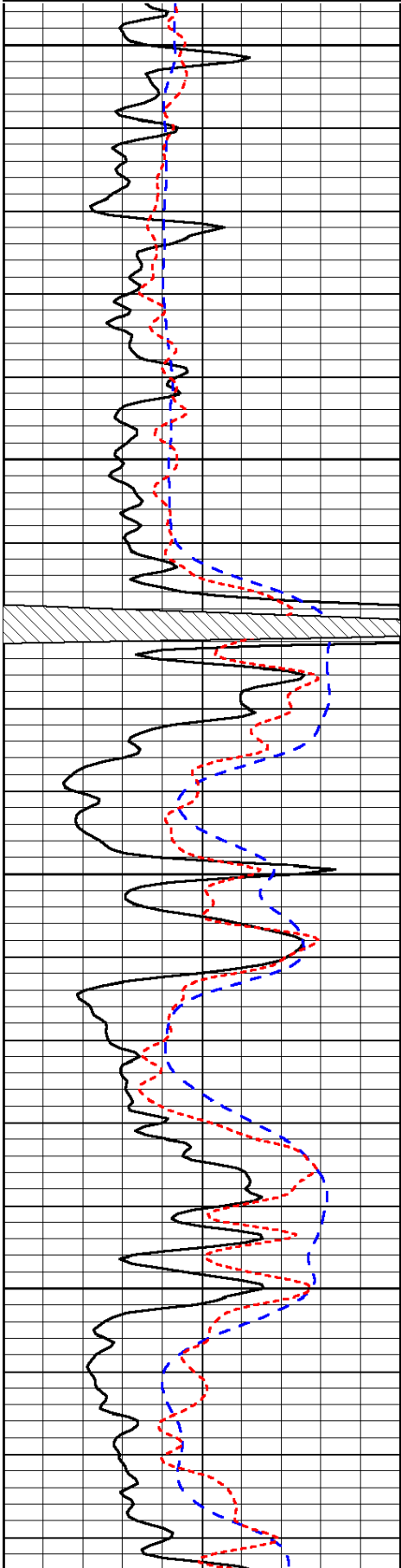
Charted by:

Depth in Feet scaled 1:240

0	Gamma Ray	150
-200	SP (mV)	0
-160	RxoRt	40

0.2	Deep Resistivity	2000
0.2	Medium Resistivity	2000
0.2	Shallow Resistivity	2000
15000	Line Tension	0

LSPD

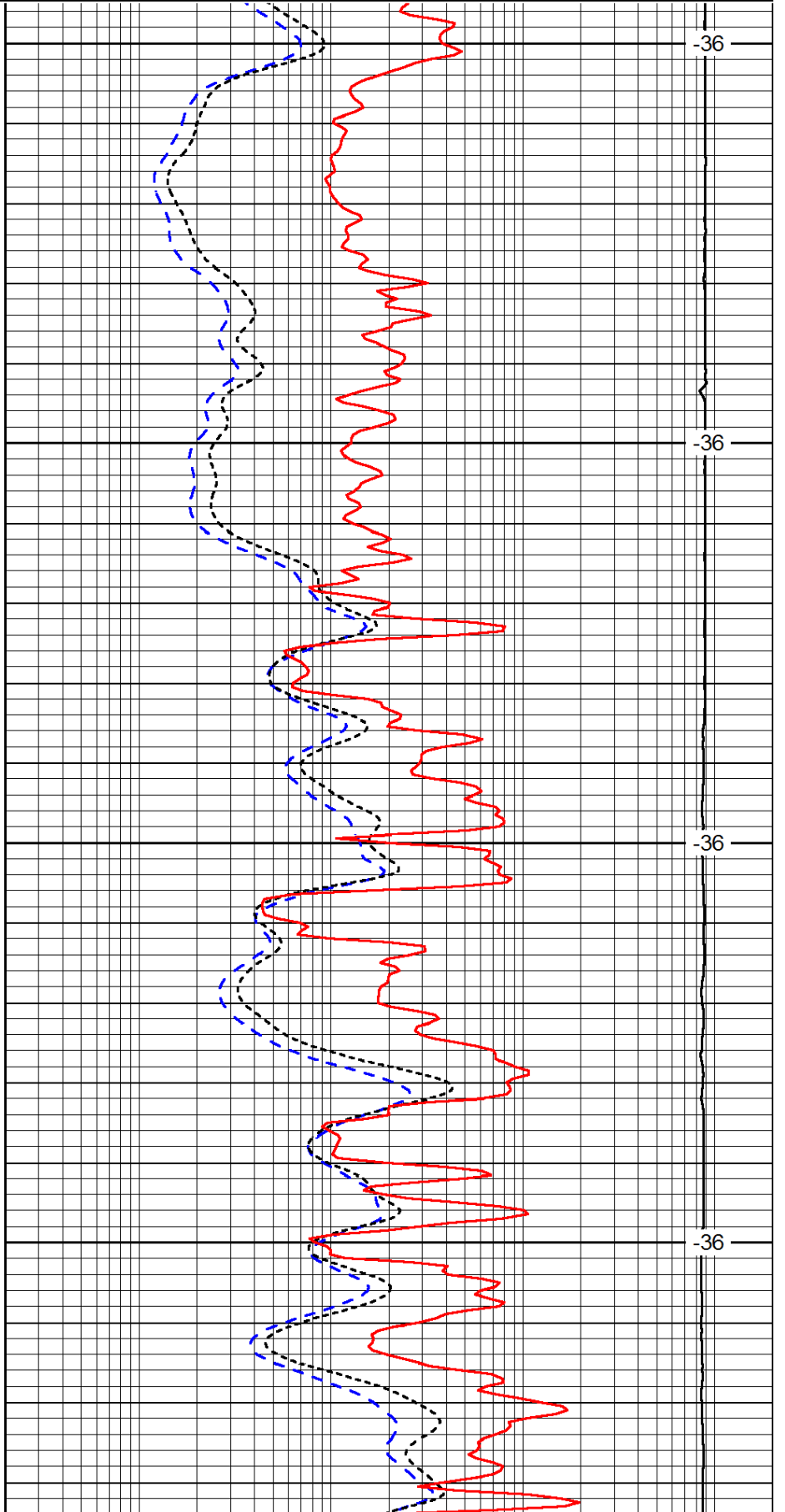


3900

3950

4000

4050

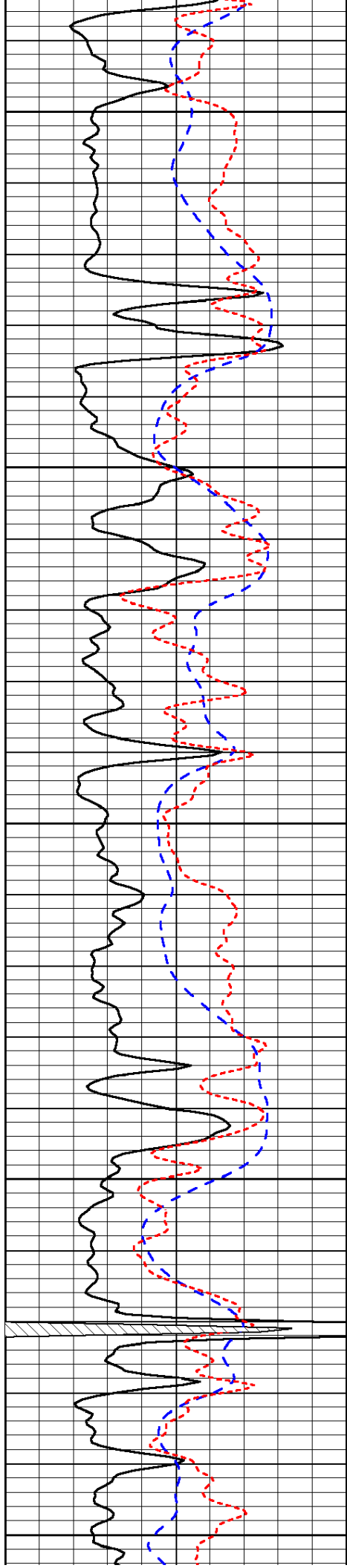


-36

-36

-36

-36



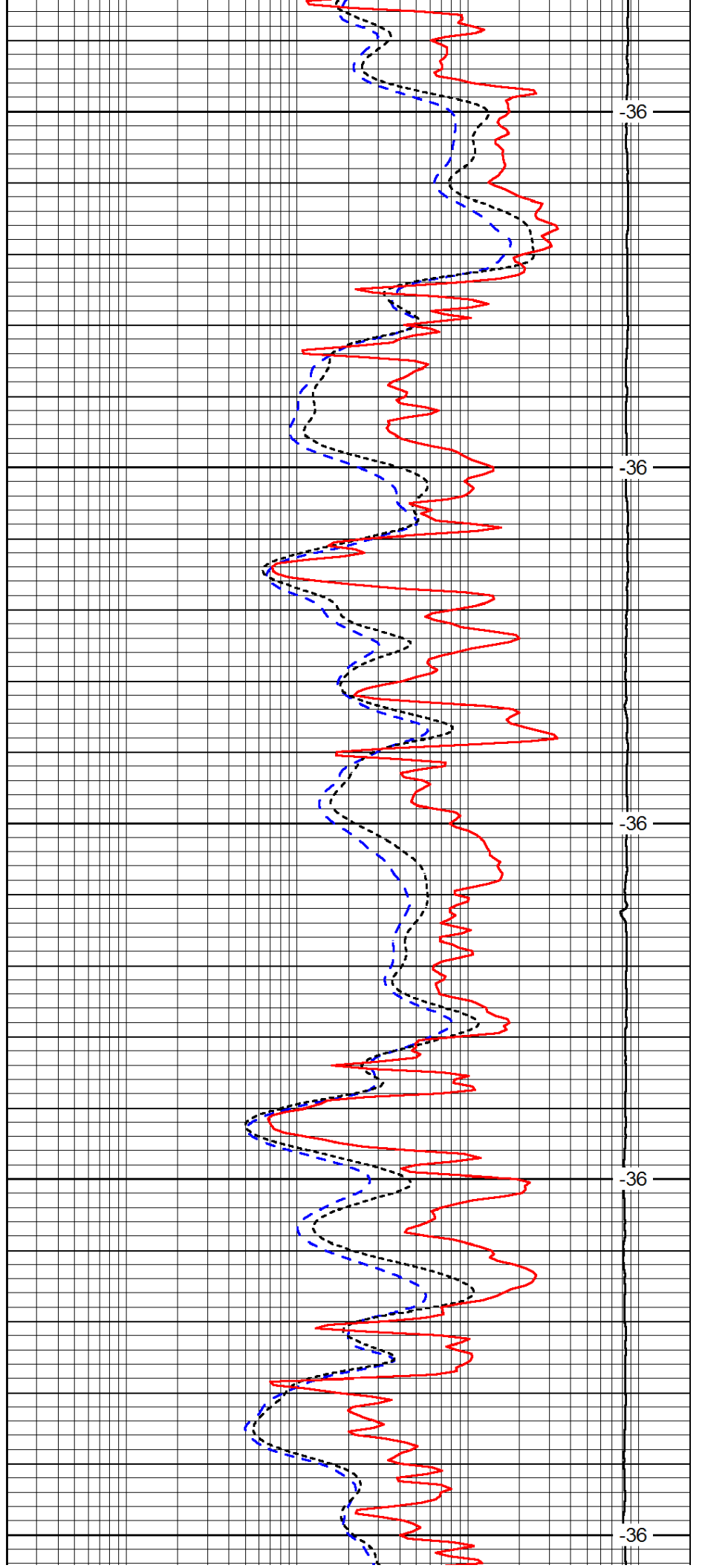
4100

4150

4200

4250

4300



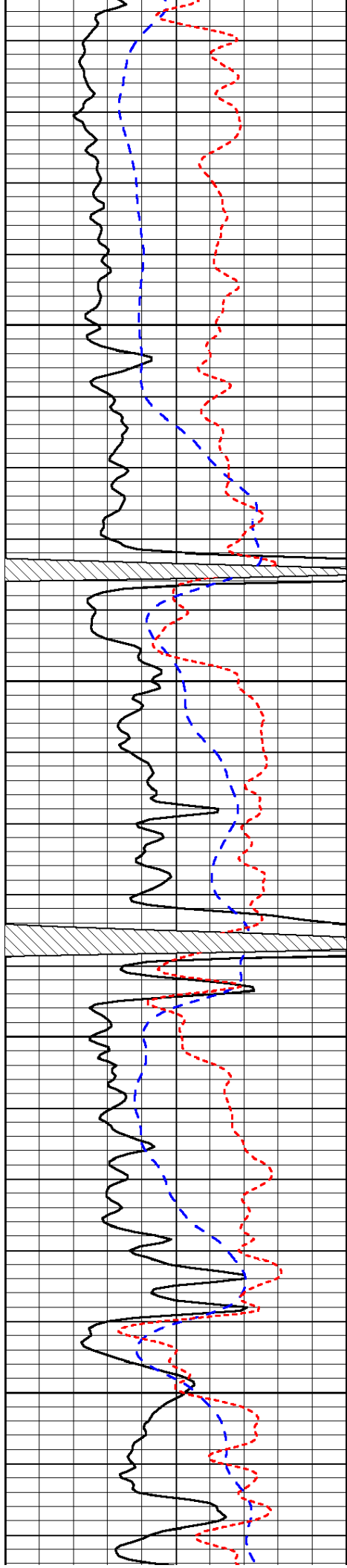
-36

-36

-36

-36

-36

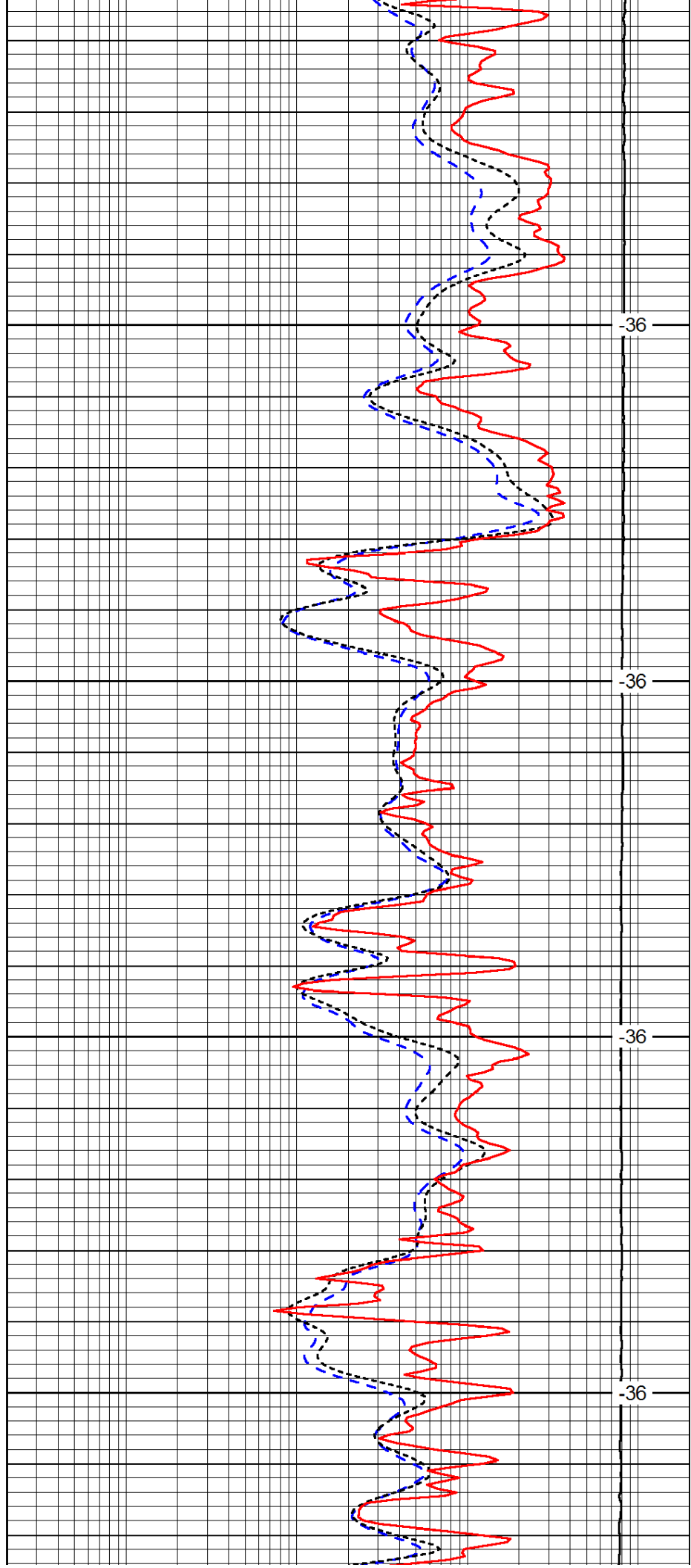


4350

4400

4450

4500

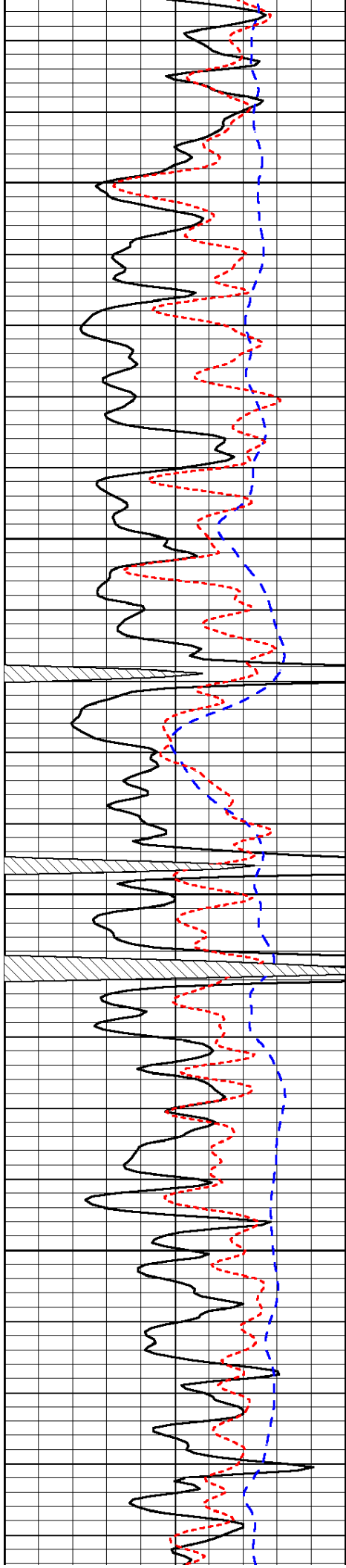


-36

-36

-36

-36

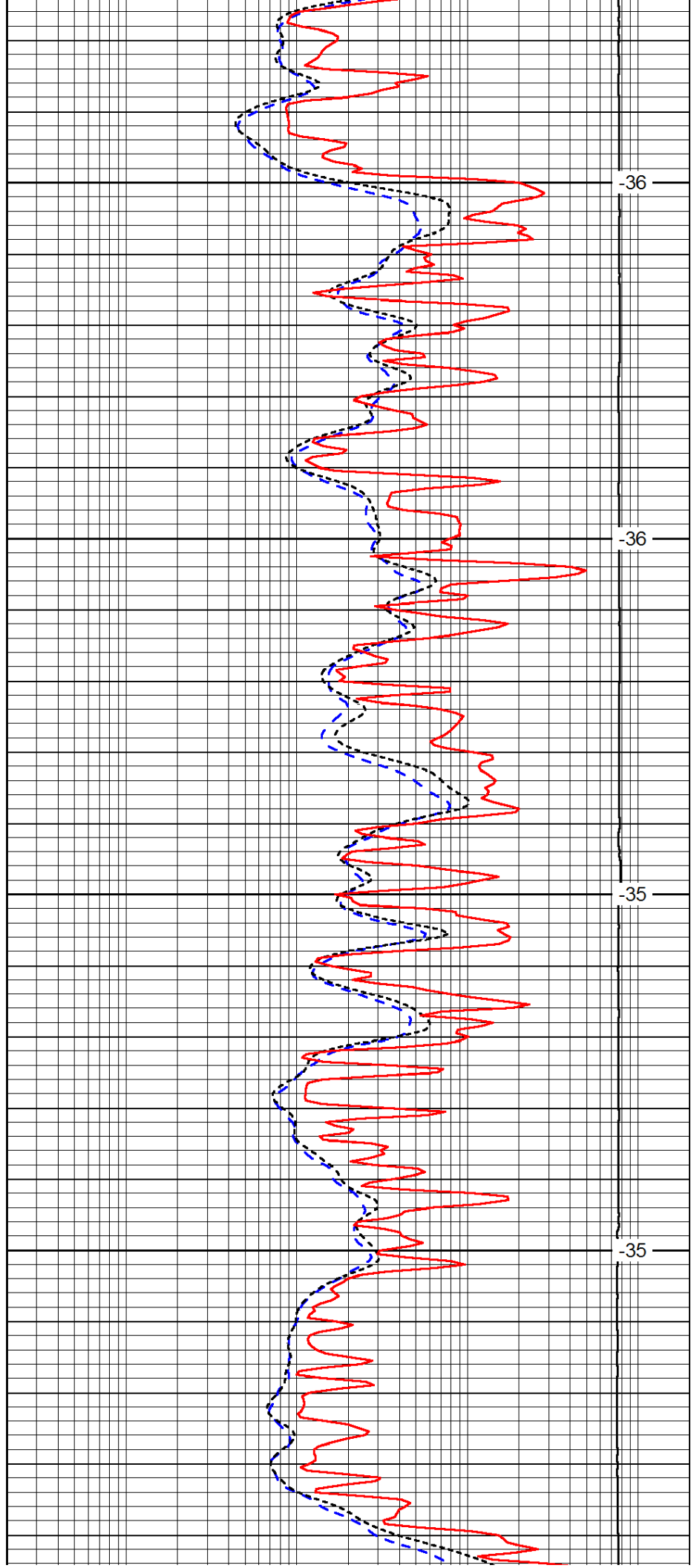


4550

4600

4650

4700

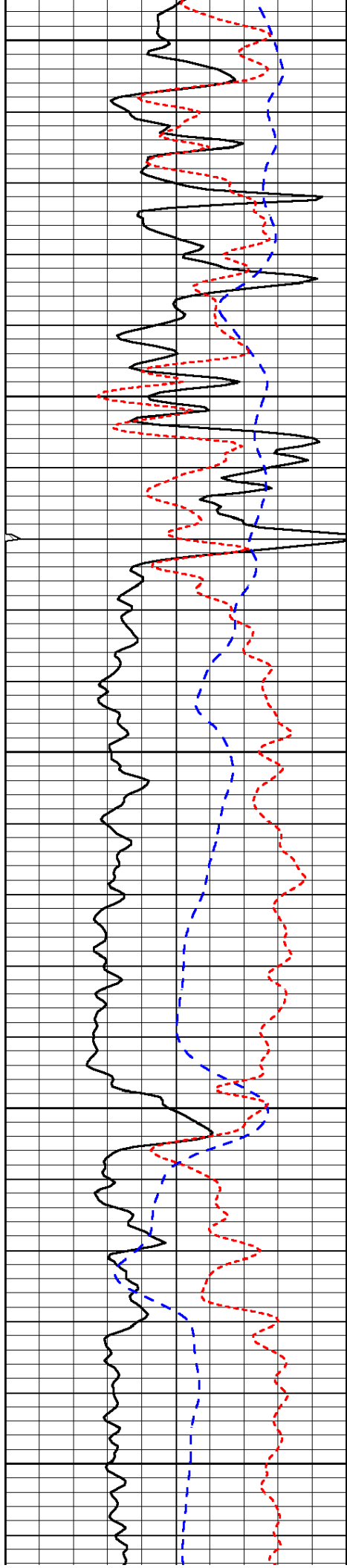


-36

-36

-35

-35



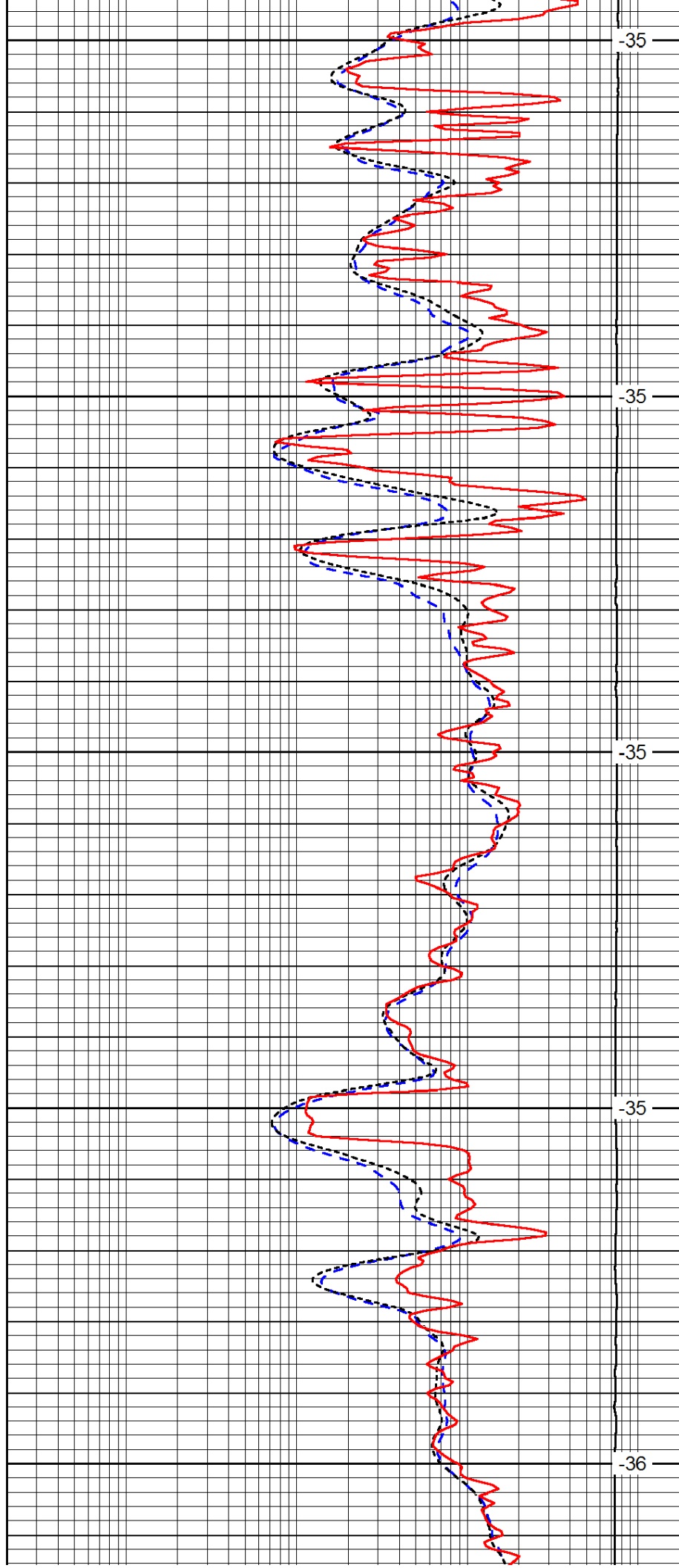
4750

4800

4850

4900

4950



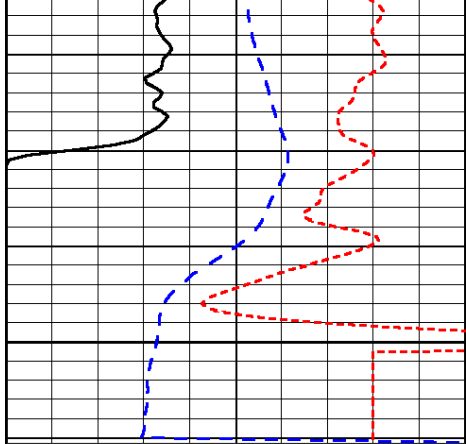
-35

-35

-35

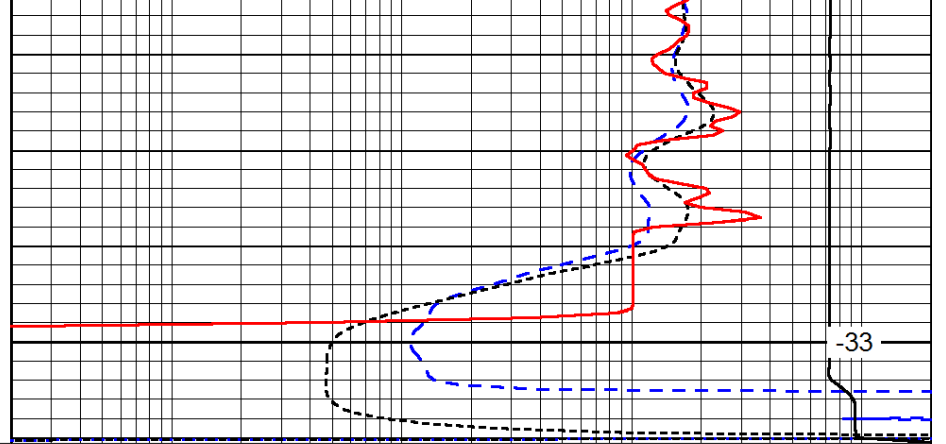
-35

-36



5000

0	Gamma Ray	150
-200	SP (mV)	0
-160	RxoRt	40



-33

0.2	Deep Resistivity	2000
0.2	Medium Resistivity	2000
0.2	Shallow Resistivity	2000
15000	Line Tension	0

LSPD