



Pioneer Energy Services

Microresistivity Log

API No.	15-193-20,939-00-00		
Company	Norstar Petroleum, Inc.		
Well	Solomon Creek No. 1-34		
Field	Wildcat		
County	Thomas	State	Kansas
Location	1143' FSL & 2314' FWL		
Sec: 34	Twp: 9S	Rge: 35W	
Permanent Datum	Ground Level	Elevation 3326	
Log Measured From	Kelly Bushing	5 Ft. Above Perm. Datum	
Drilling Measured From	Kelly Bushing		
		Other Services CNL/CDL DIL	
		Elevation K.B. 3331 D.F. G.L. 3326	

Date	12/1/14
Run Number	One
Depth Driller	4938
Depth Logger	4939
Bottom Logged Interval	4938
Top Log Interval	3700
Casing Driller	8.625 @ 304
Casing Logger	300
Bit Size	7.875
Type Fluid in Hole	Chemical
Salinity, ppm CL	7.000
Density / Viscosity	9.3 58
pH / Fluid Loss	10.5 9.6
Source of Sample	Flowline
Rm @ Meas. Temp	.45 @ 43
Rmf @ Meas. Temp	.34 @ 43
Rmc @ Meas. Temp	.61 @ 43
Source of Rmf / Rmc	Charts
Rm @ BHT	.15 @ 125
Operating Rig Time	3 Hours
Max Rec. Temp. F	125
Equipment Number	91
Location	Hays
Recorded By	J. Henrickson
Witnessed By	Tyler Sanders

<<< Fold Here >>>

All interpretations are opinions based on inferences from electrical or other measurements and we cannot and do not guarantee the accuracy or correctness of any interpretation, and we shall not, except in the case of gross or willful negligence on our part, be liable or responsible for any loss, costs, damages, or expenses incurred or sustained by anyone resulting from any interpretation made by any of our officers, agents or employees. These interpretations are also subject to our general terms and conditions set out in our current Price Schedule.

Comments

Thank you for using Log-Tech, Inc.
(785) 625-3858

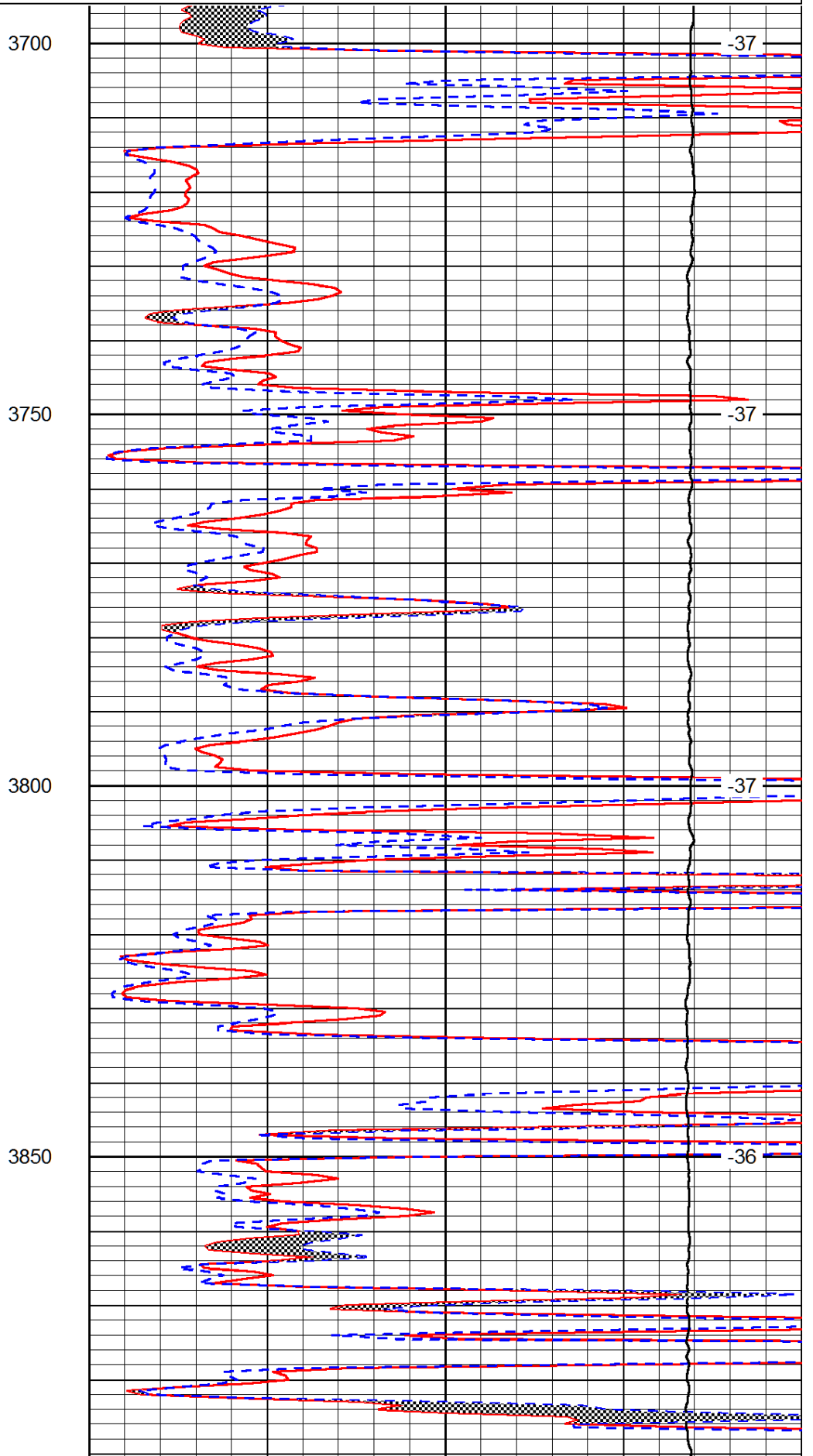
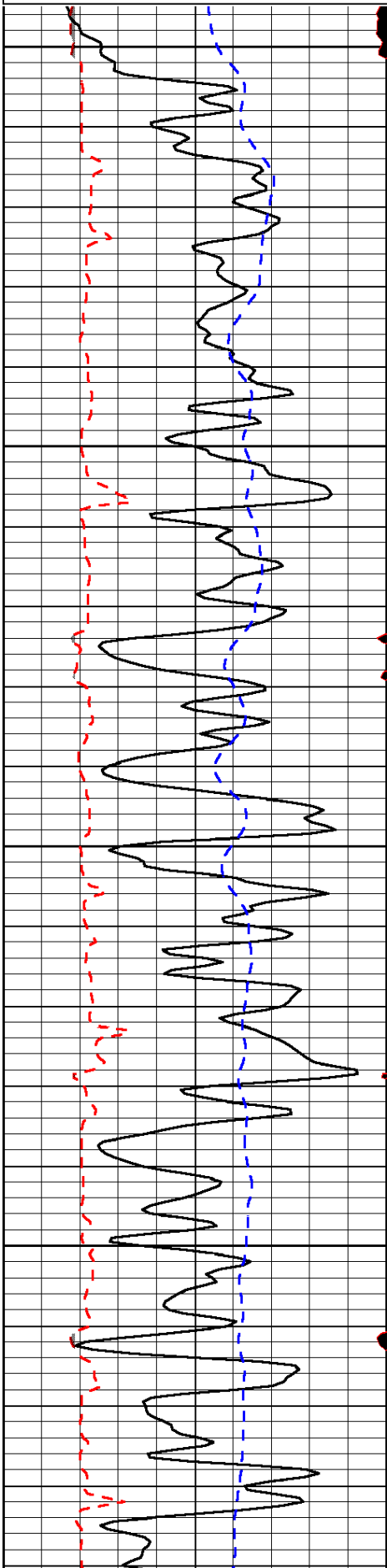
Winona Kansas
5 North to Curve, 2 East, 6 North, 1/2 West, North Into

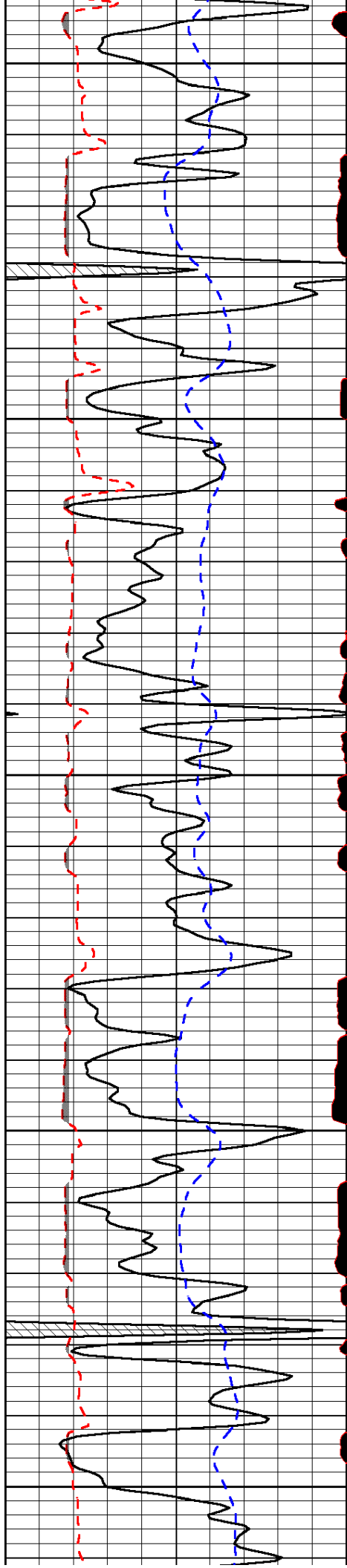
Database File: norstar_solomon_creek_1_34hd.db
 Dataset Pathname: DIL/norstkmel
 Presentation Format: micro
 Dataset Creation: Mon Dec 01 10:04:17 2014
 Charted by: Depth in Feet scaled 1:240

0	Gamma Ray	150
6	MCAL (GAPI)	16
2.875	Mud Cake (GAPI)	7.875
-200	SP (mV)	0

0	Micro Inverse 1 X 1	40
0	Micro Normal 2"	40
10000	Line Weight	0

LSPD





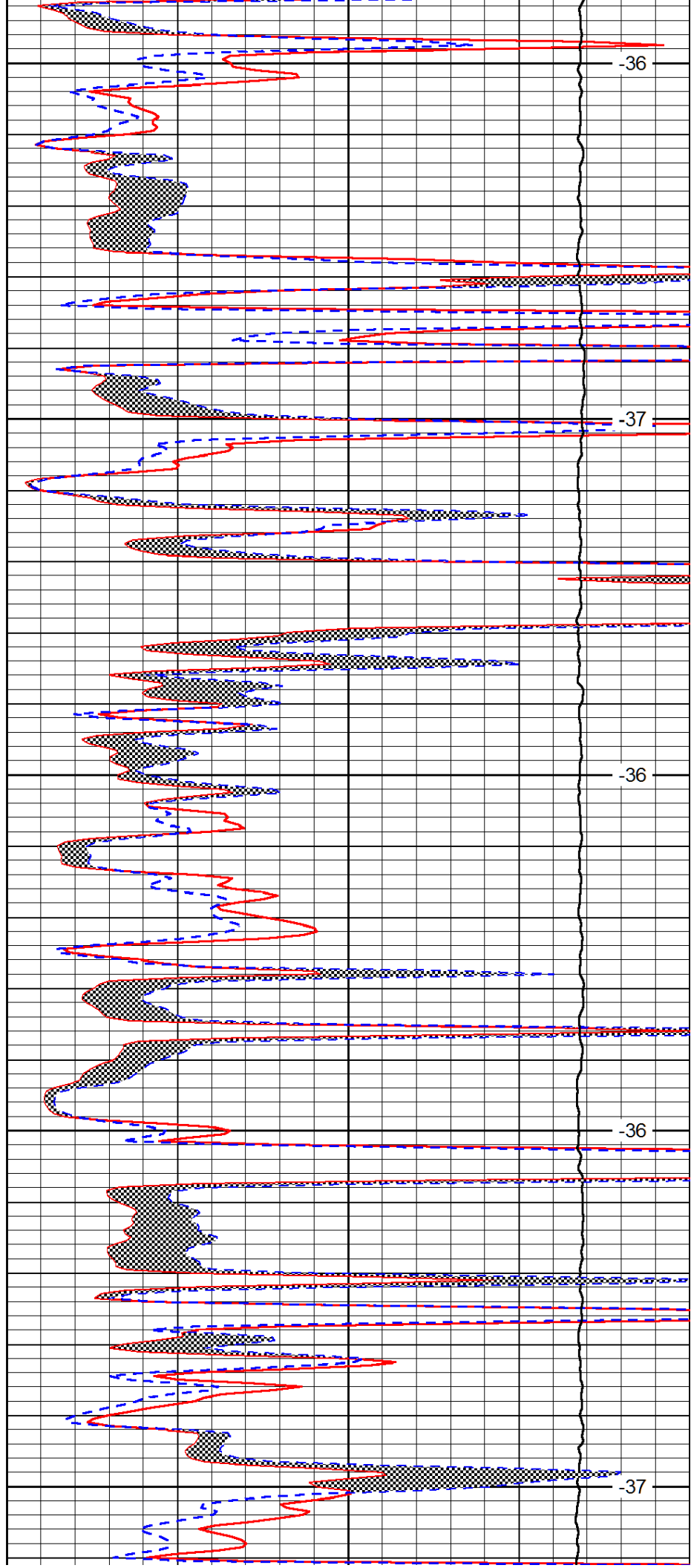
3900

3950

4000

4050

4100



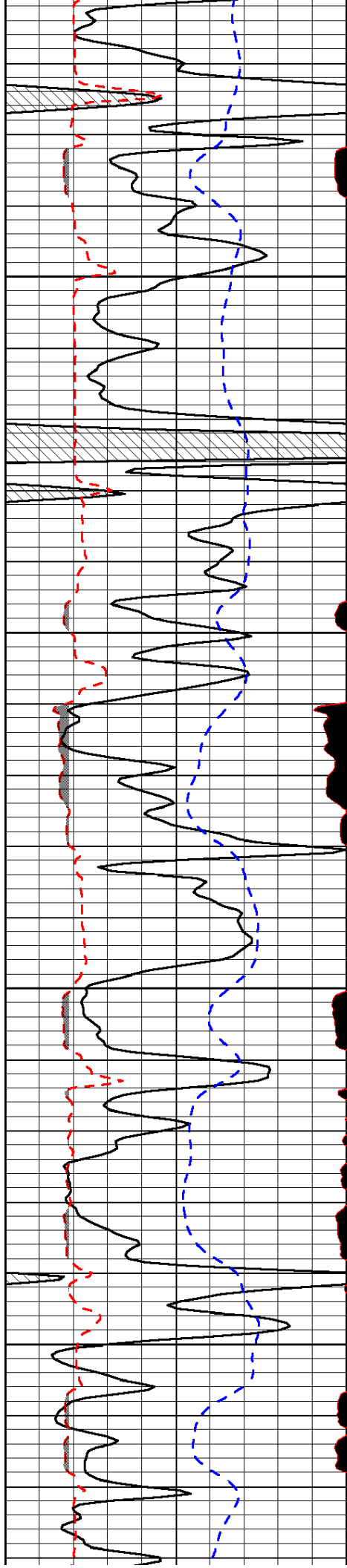
-36

-37

-36

-36

-37

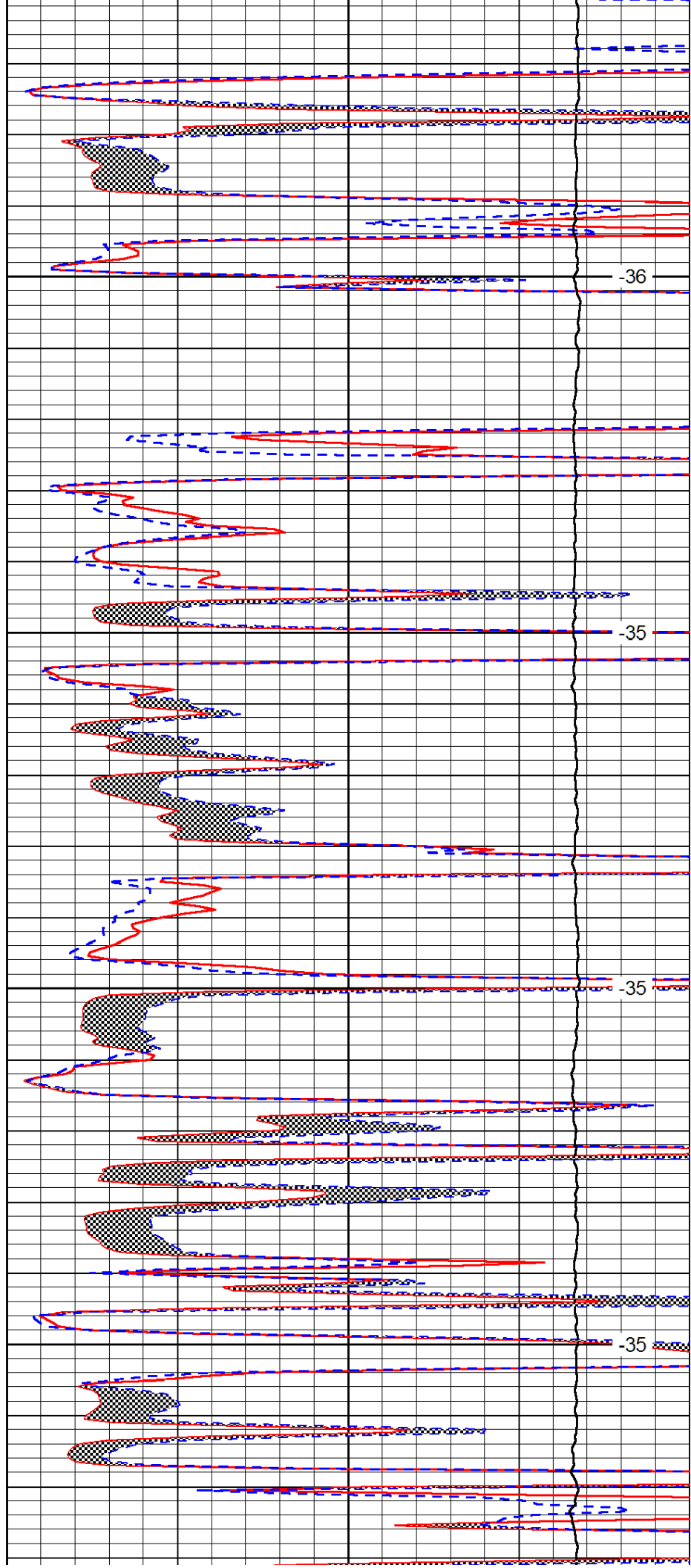


4150

4200

4250

4300

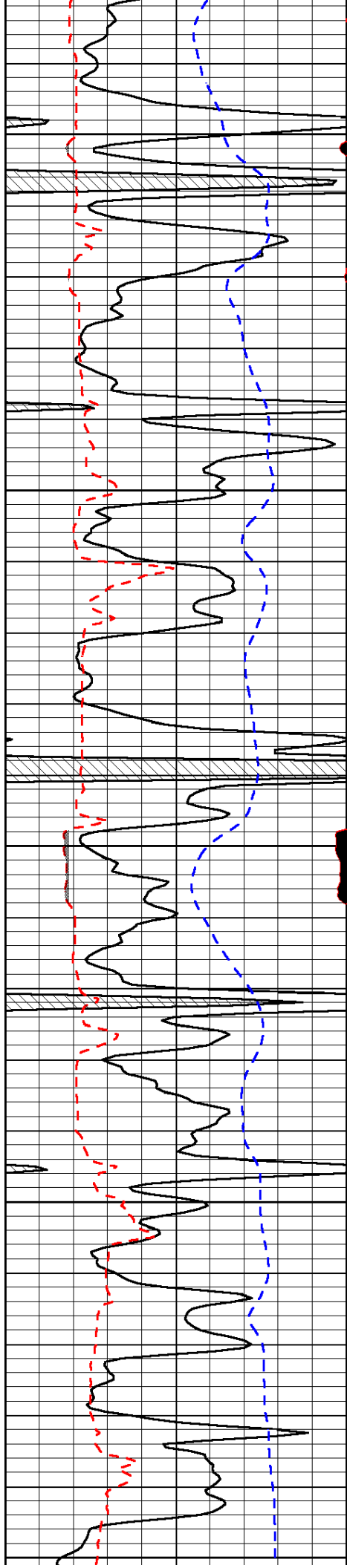


-36

-35

-35

-35



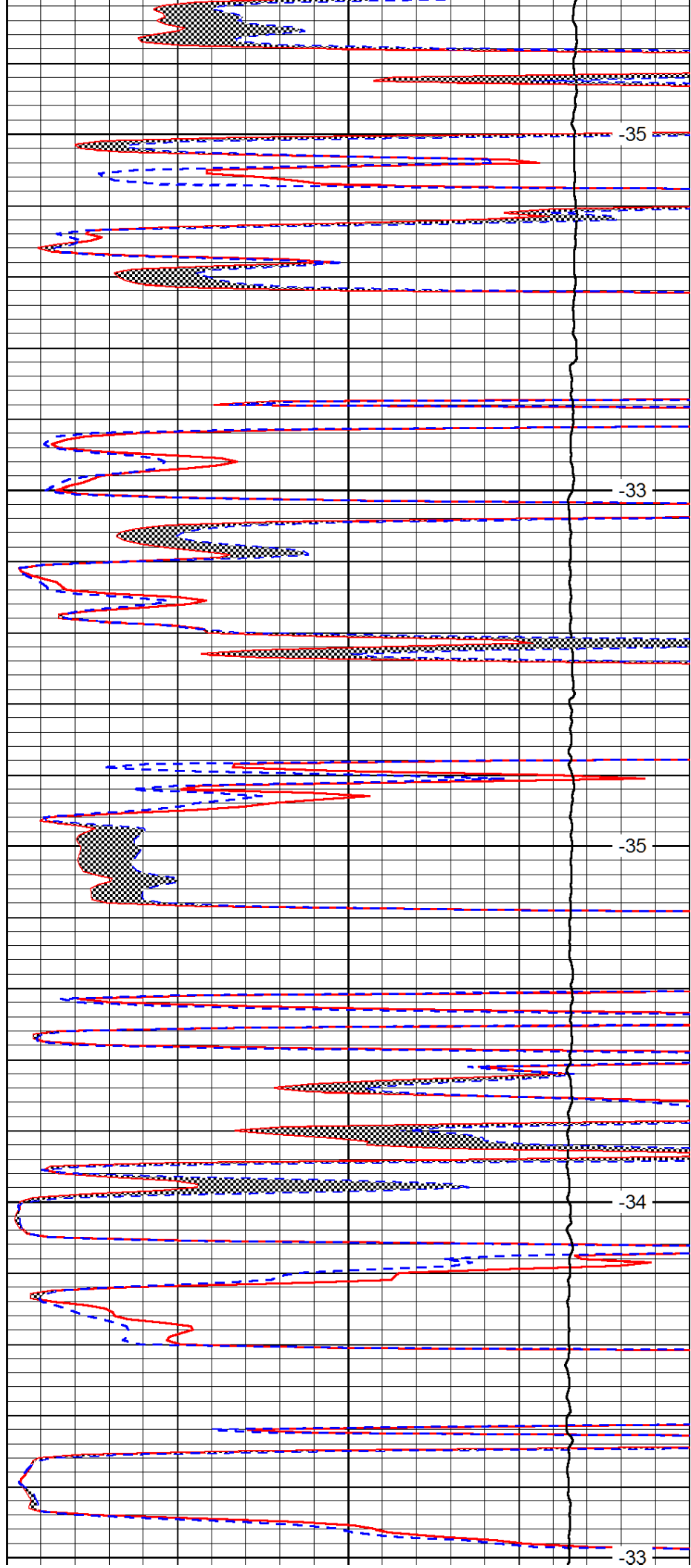
4350

4400

4450

4500

4550



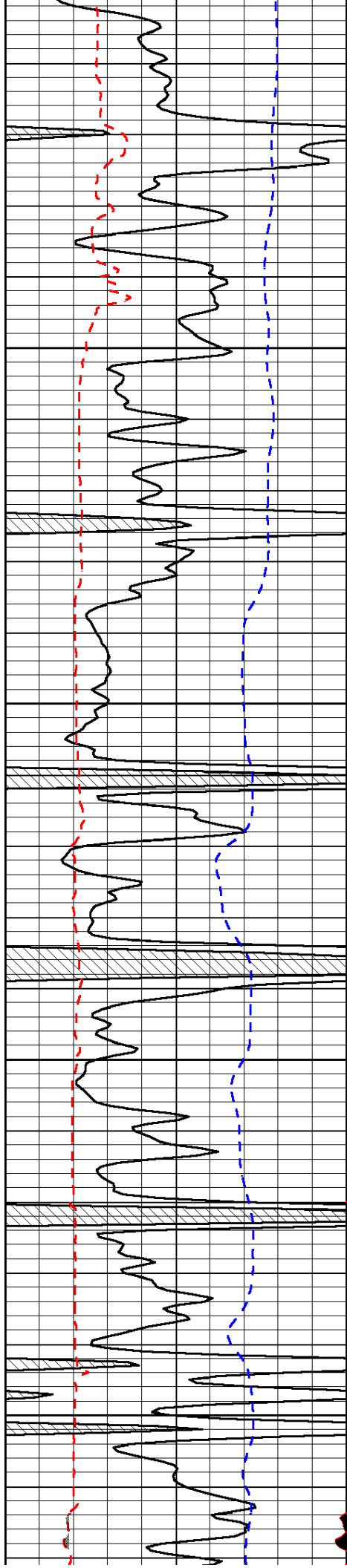
-35

-33

-35

-34

-33

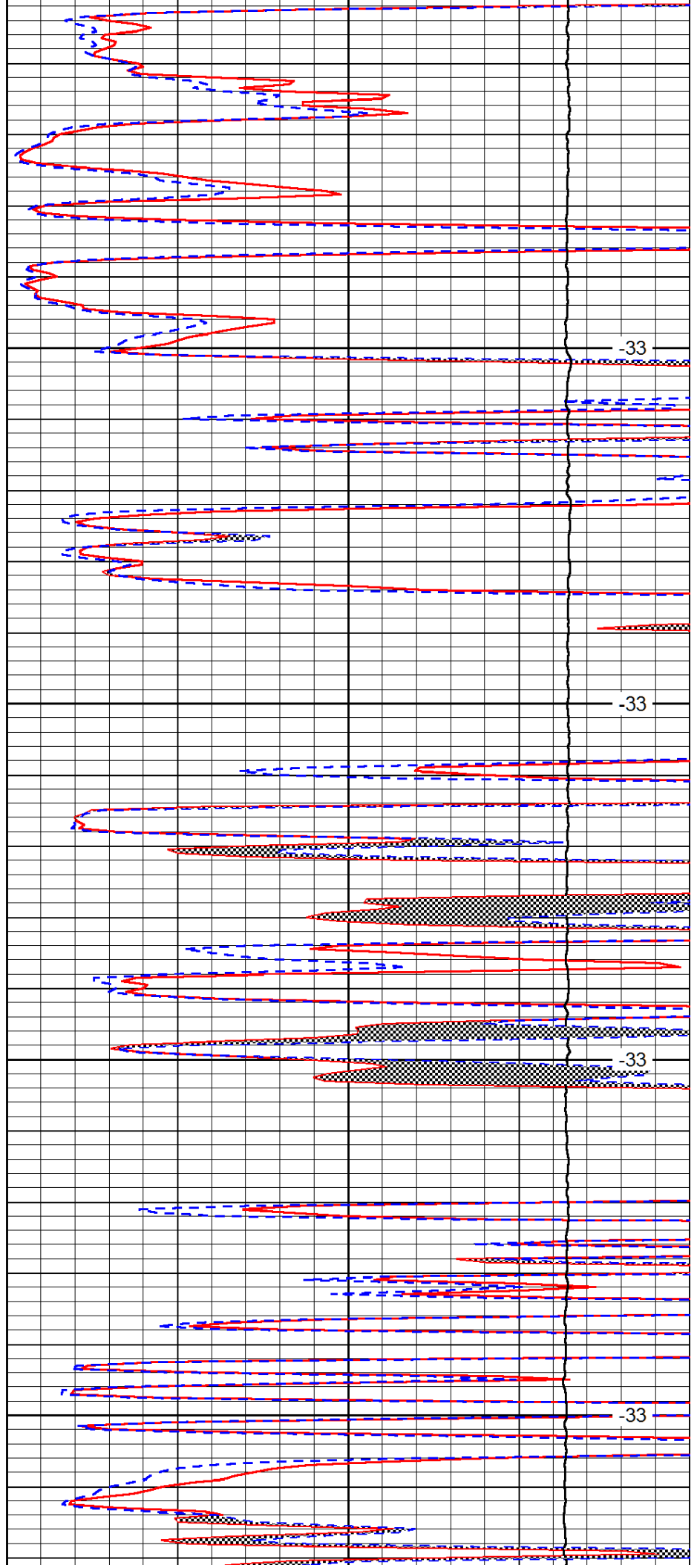


4600

4650

4700

4750

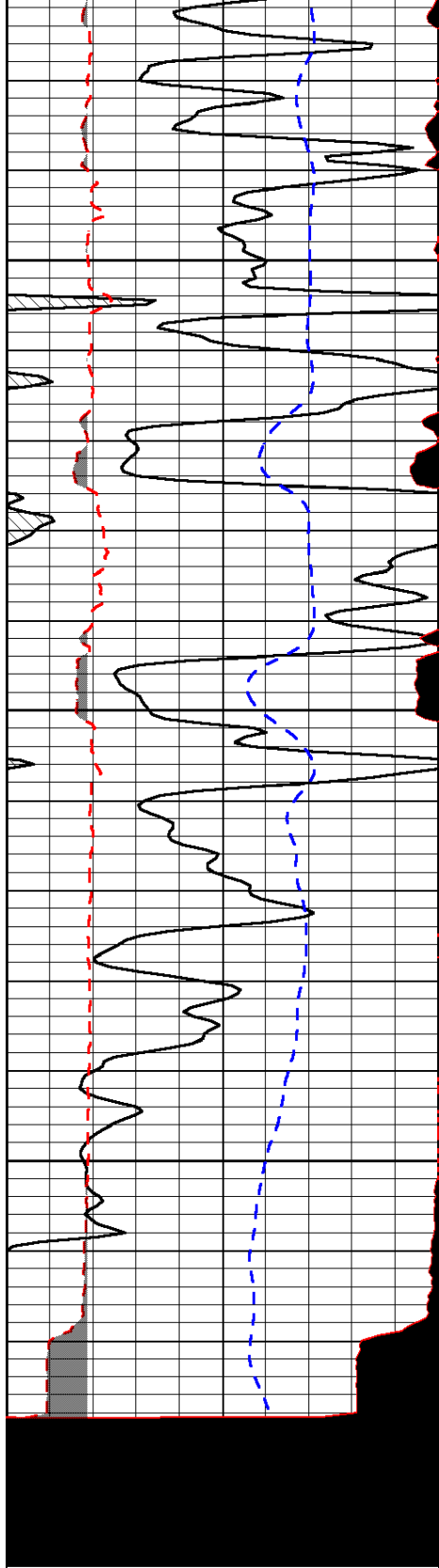


-33

-33

-33

-33

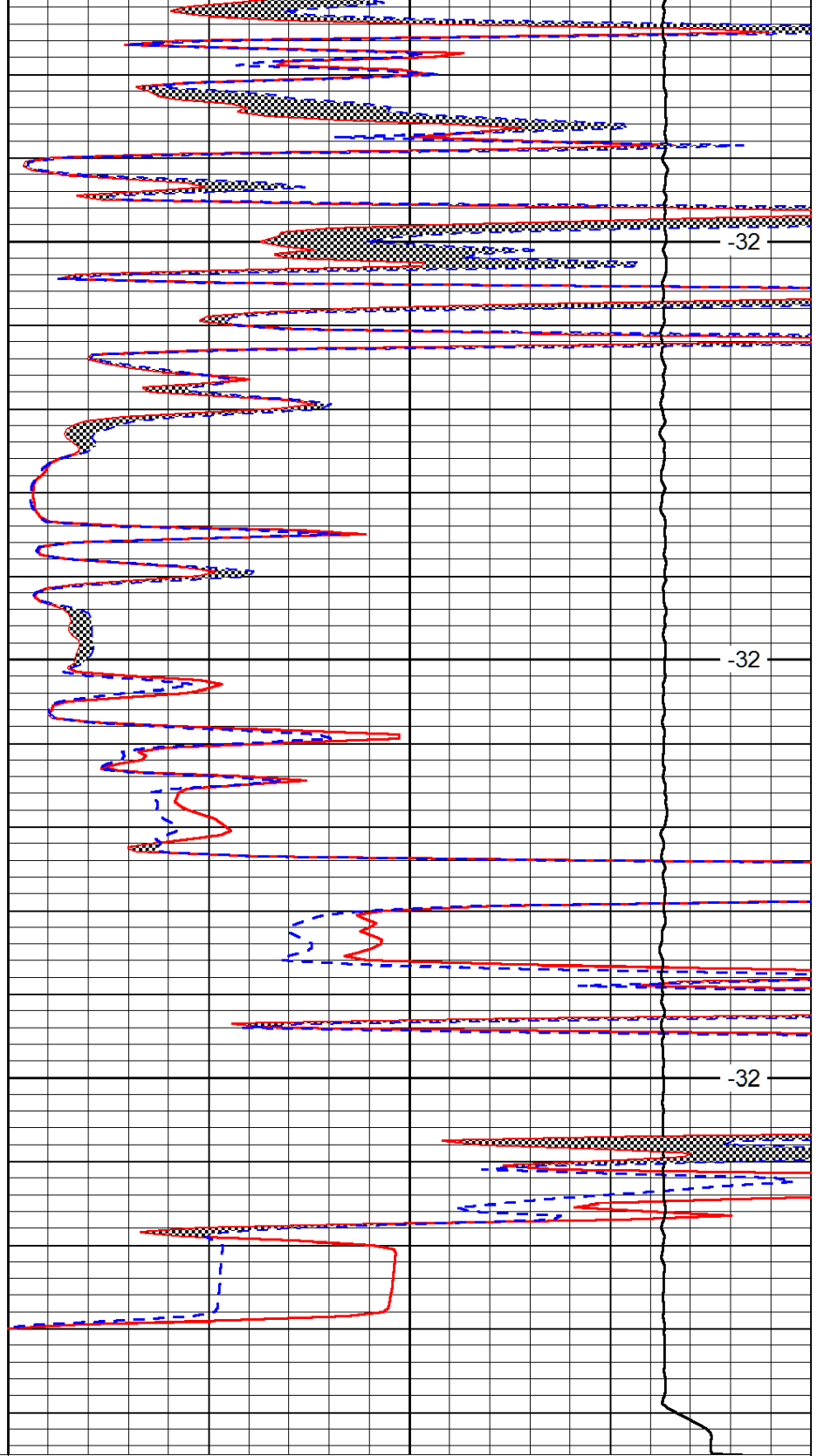


0	Gamma Ray	150
6	MCAL (GAPI)	16
2.875	Mud Cake (GAPI)	7.875
-200	SP (mV)	0

4800

4850

4900



0	Micro Inverse 1 X 1	40
0	Micro Normal 2"	40
10000	Line Weight	0

LSPD