



Pioneer Energy Services

Dual Induction Log

API No.	15-193-20,939-00-00	
Company	Norstar Petroleum, Inc.	
Well	Solomon Creek No. 1-34	
Field	Wildcat	
County	Thomas	State
		Kansas
Location	1143' FSL & 2314' FWL	
Sec: 34	Twp: 9S	Rge: 35W
Permanent Datum	Ground Level	Elevation 3326
Log Measured From	Kelly Bushing	5 Ft. Above Perm. Datum
Drilling Measured From	Kelly Bushing	
		Other Services CNL/CDL MEL
		Elevation K.B. 3331 D.F. G.L. 3326

Date	12/1/14
Run Number	One
Depth Driller	4938
Depth Logger	4939
Bottom Logged Interval	4938
Top Log Interval	300
Casing Driller	8.625 @ 304
Casing Logger	300
Bit Size	7.875
Type Fluid in Hole	Chemical
Salinity, ppm CL	7.000
Density / Viscosity	9.3 58
pH / Fluid Loss	10.5 9.6
Source of Sample	Flowline
Rm @ Meas. Temp	.45 @ 43
Rmf @ Meas. Temp	.34 @ 43
Rmc @ Meas. Temp	.61 @ 43
Source of Rmf / Rmc	Charts
Rm @ BHT	.15 @ 125
Operating Rig Time	3 Hours
Max Rec. Temp. F	125
Equipment Number	91
Location	Hays
Recorded By	J. Henrickson
Witnessed By	Tyler Sanders

<<< Fold Here >>>

All interpretations are opinions based on inferences from electrical or other measurements and we cannot and do not guarantee the accuracy or correctness of any interpretation, and we shall not, except in the case of gross or willful negligence on our part, be liable or responsible for any loss, costs, damages, or expenses incurred or sustained by anyone resulting from any interpretation made by any of our officers, agents or employees. These interpretations are also subject to our general terms and conditions set out in our current Price Schedule.

Comments

Thank you for using Log-Tech, Inc.
(785) 625-3858

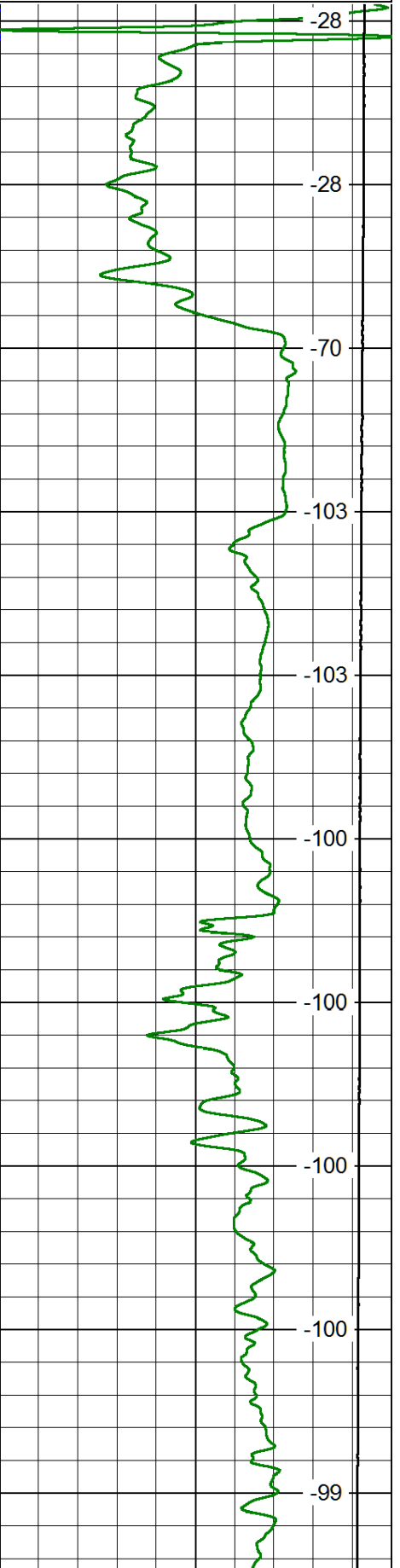
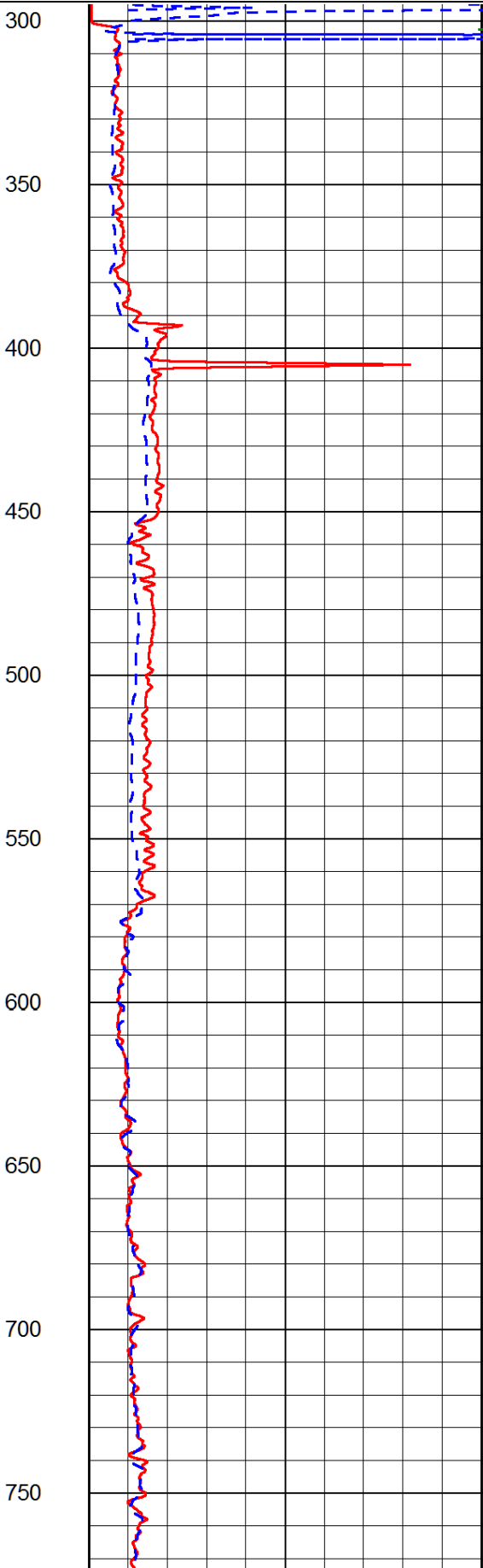
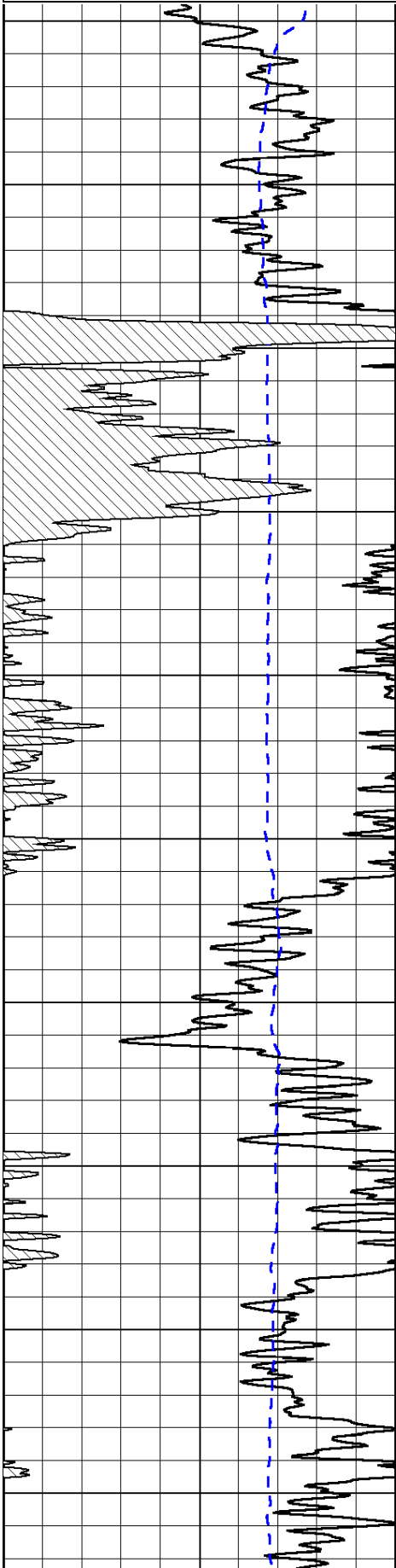
Winona Kansas
5 North to Curve, 2 East, 6 North, 1/2 West, North Into

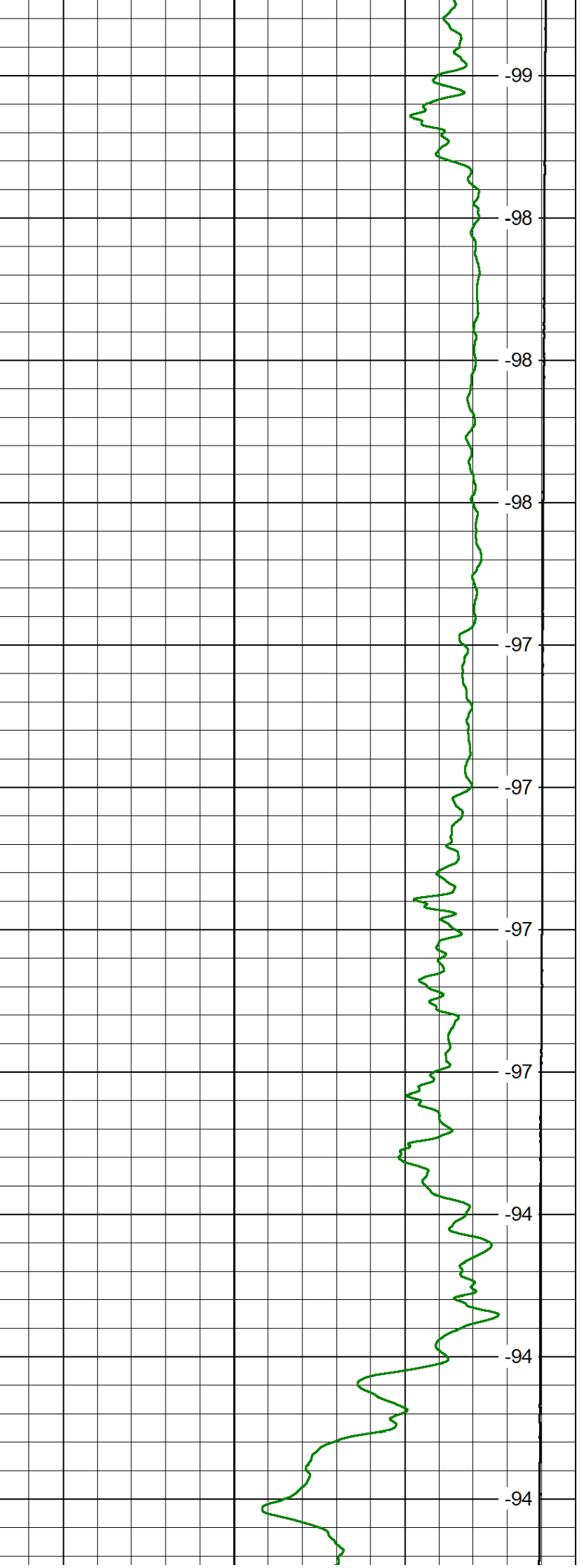
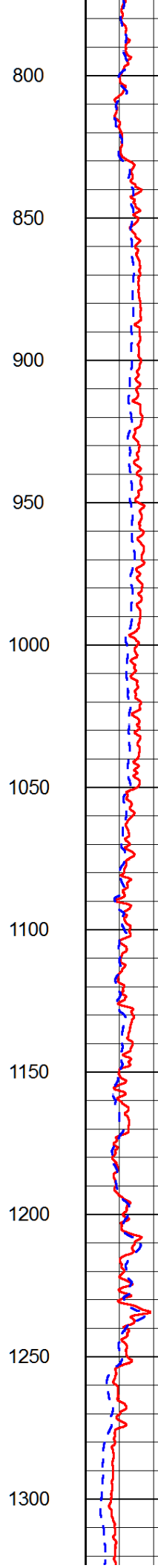
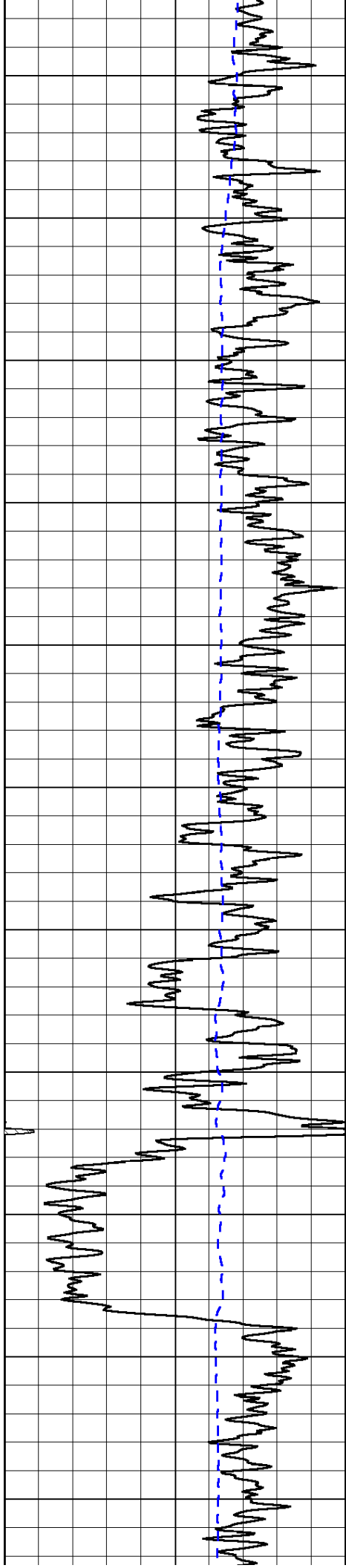
Database File: norstar_solomon_creek_1_34hd.db
 Dataset Pathname: DIL/norstkmel
 Presentation Format: dil2in
 Dataset Creation: Mon Dec 01 10:04:17 2014
 Charted by: Depth in Feet scaled 1:600

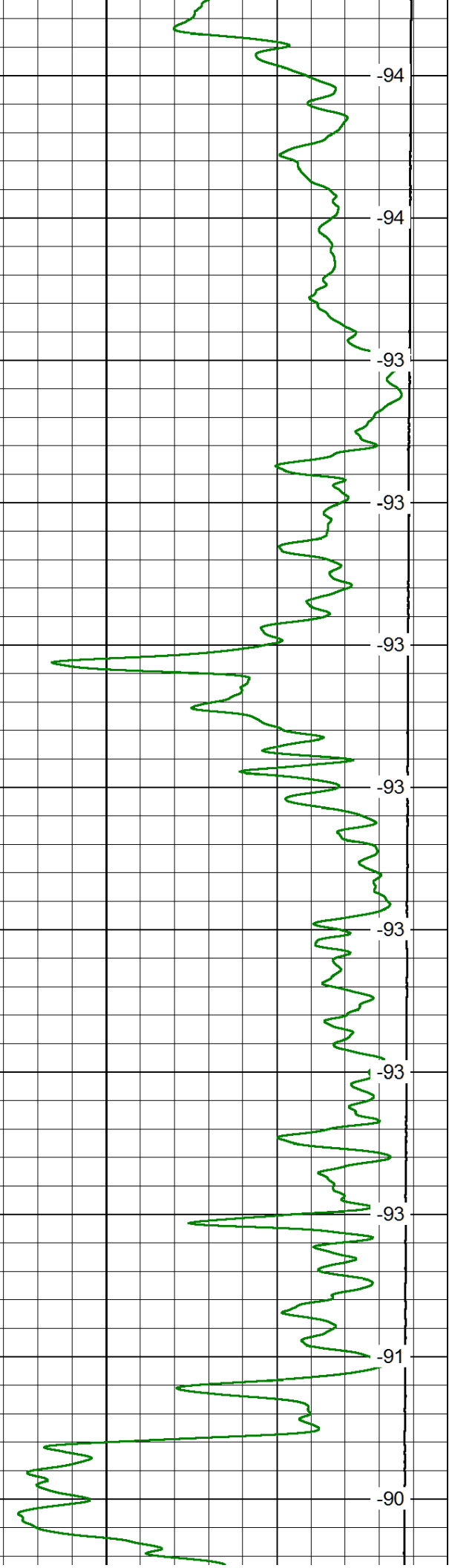
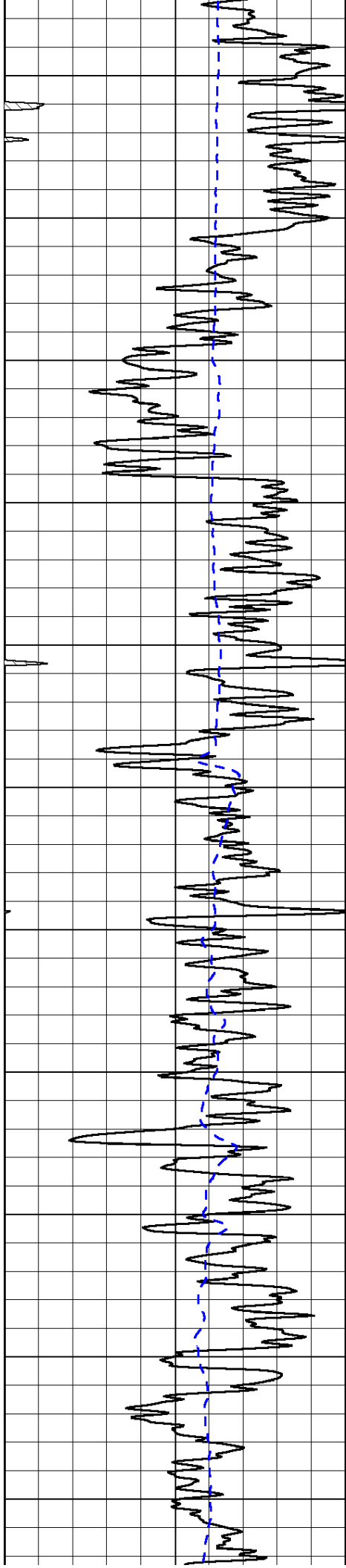
0 Gamma Ray 150
-200 SP (mV) 0

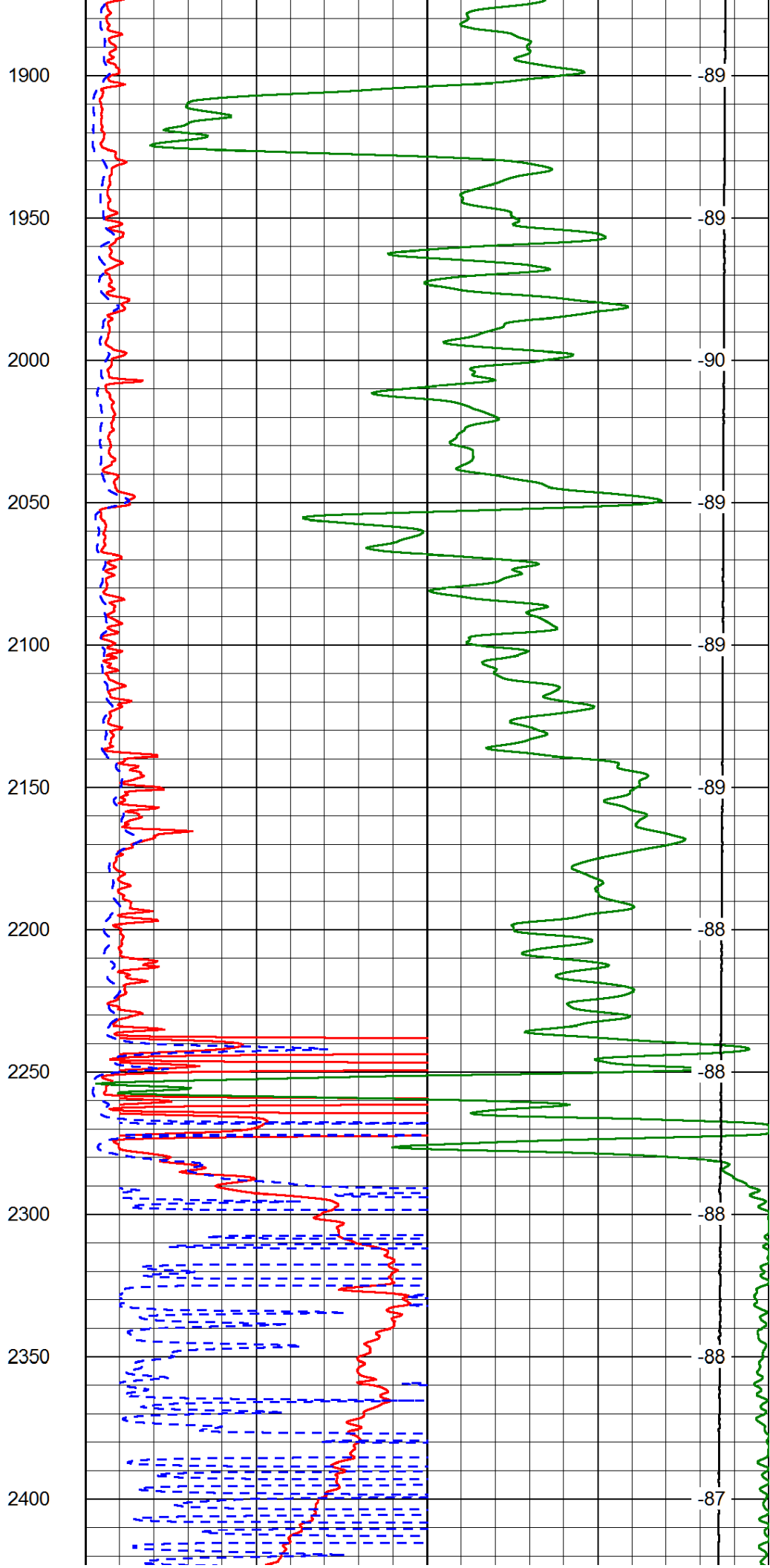
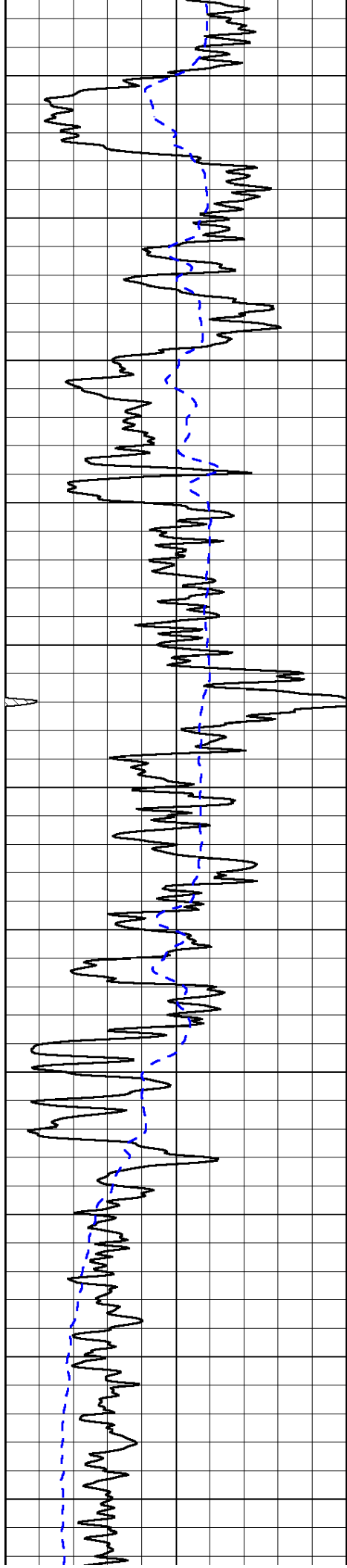
0 Shallow Resistivity 50
0 Deep Resistivity 50
1000 Conductivity 0
15000 Line Tension 0
50 Shallow Resistivity 500
50 Deep Resistivity 500

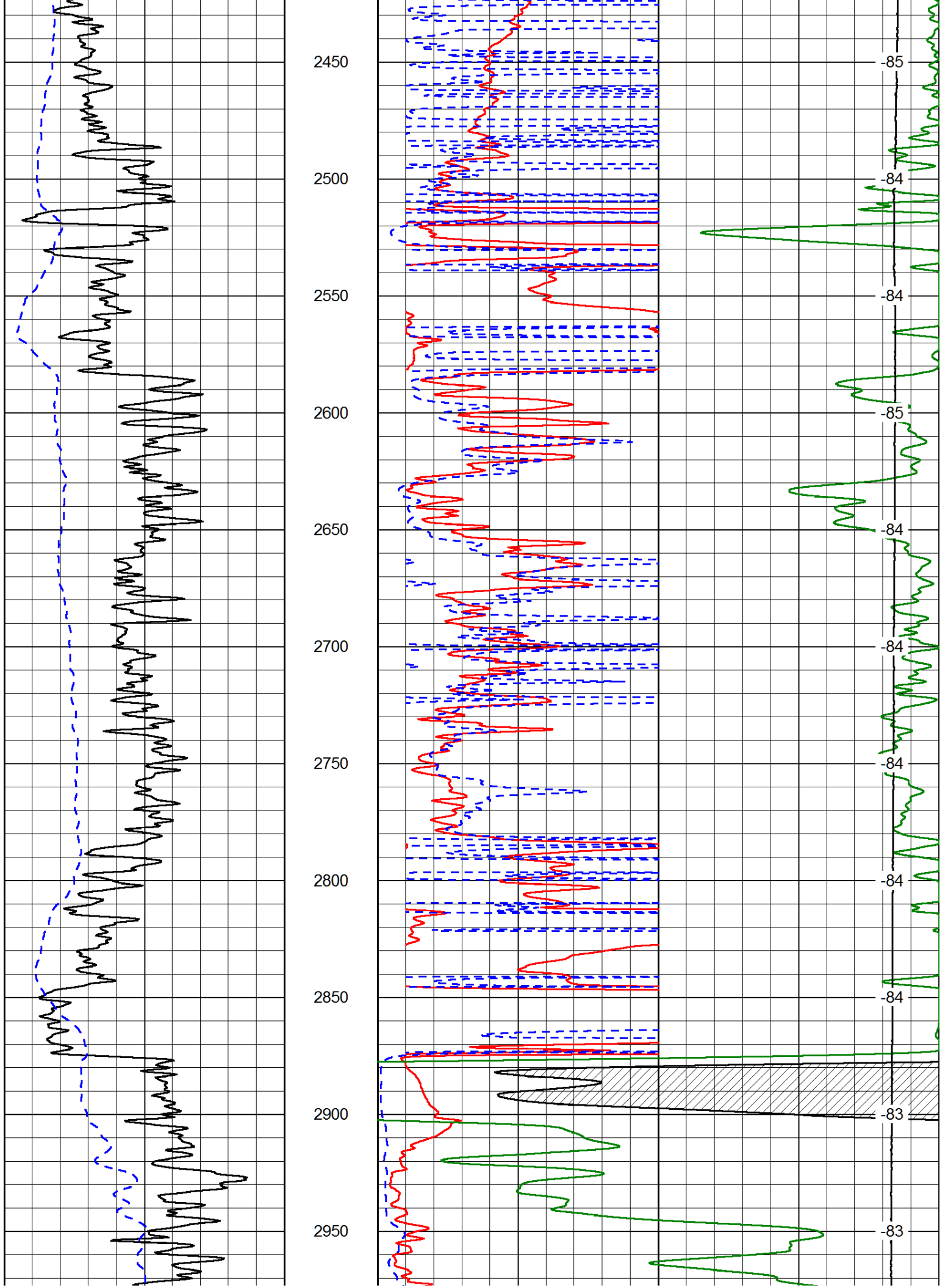
LSPD

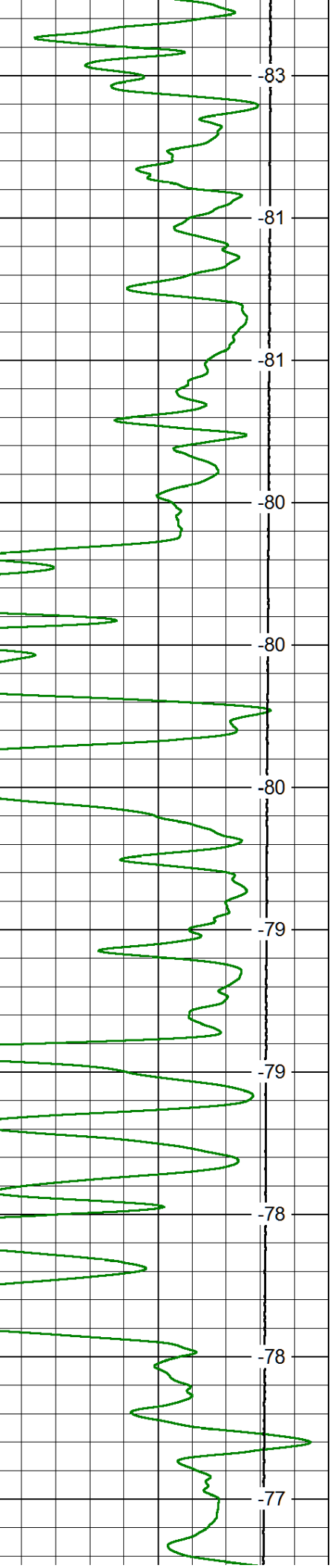
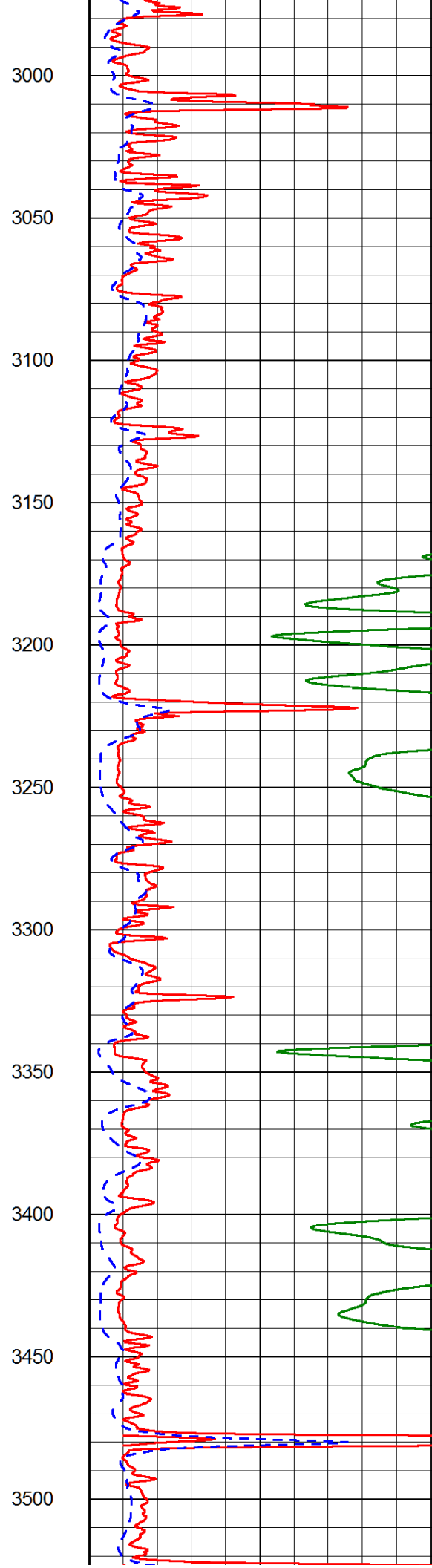
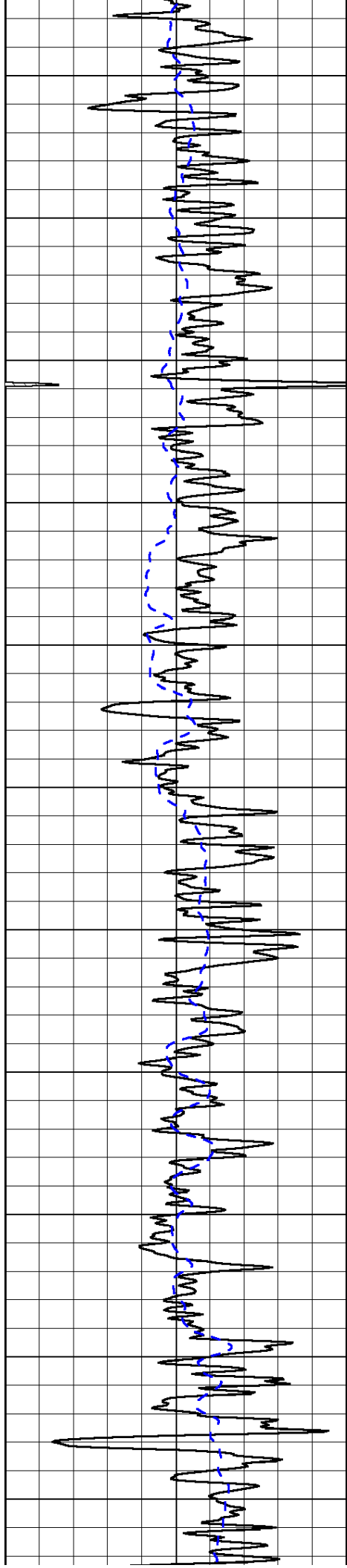


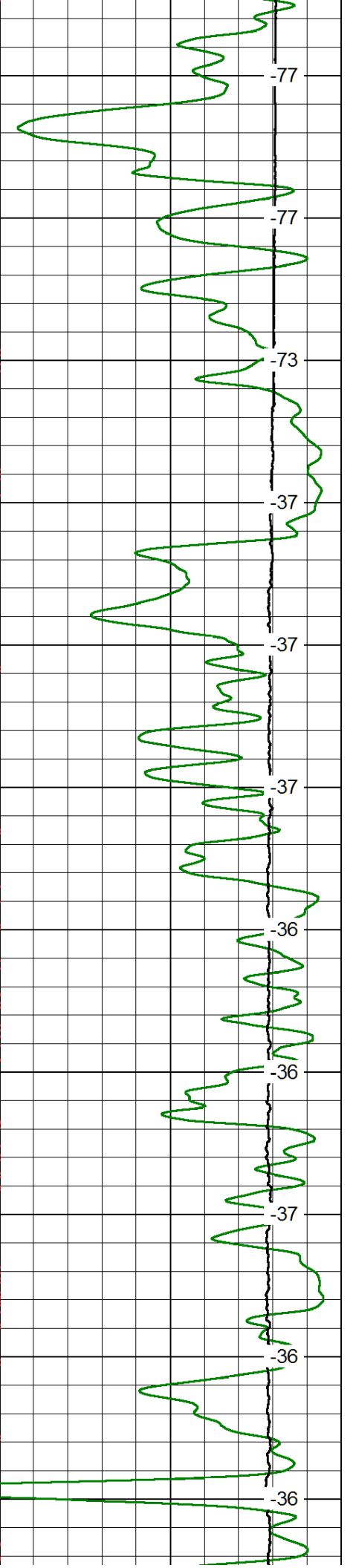
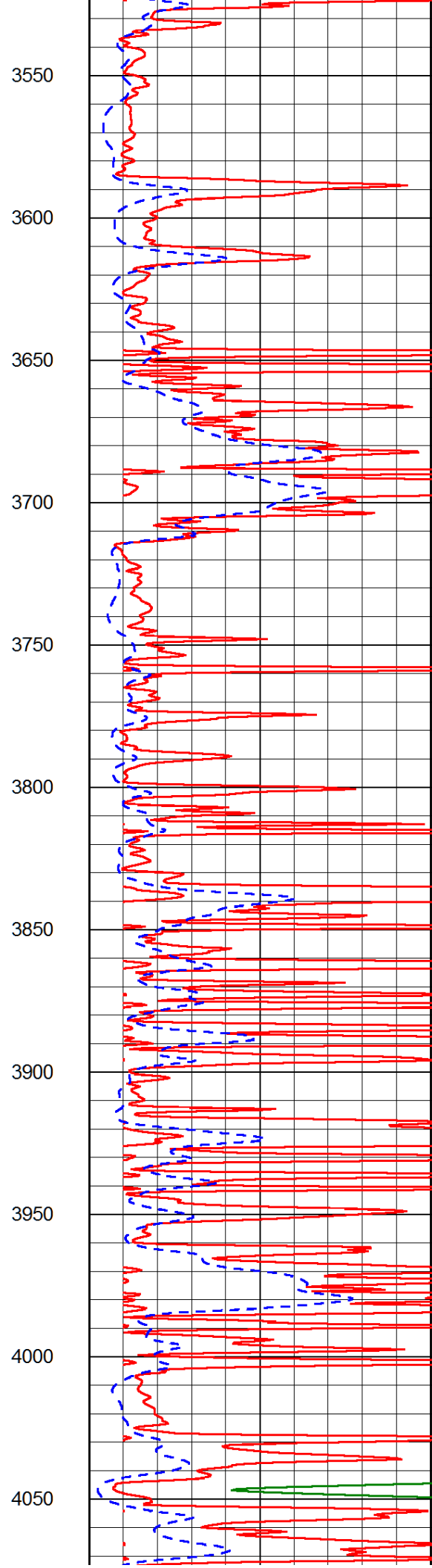
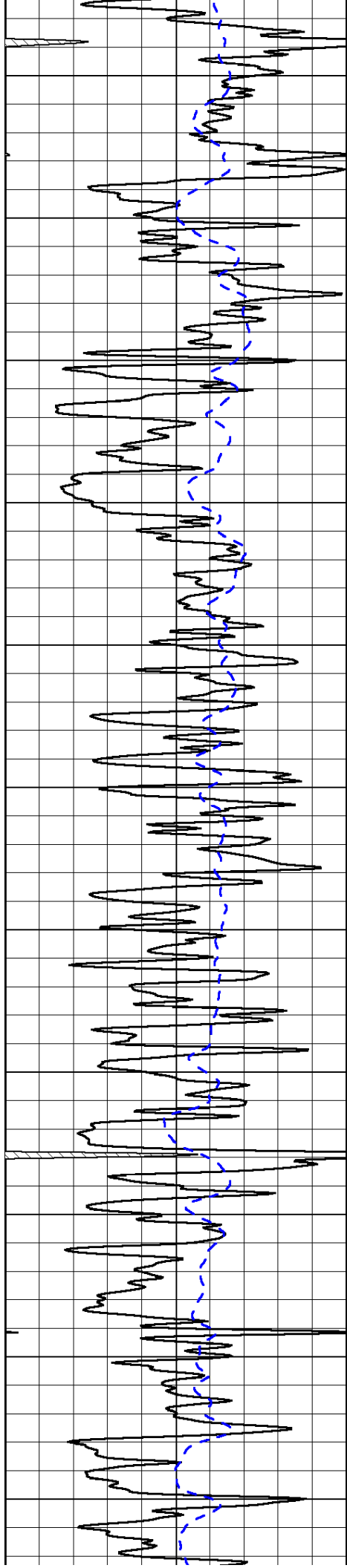


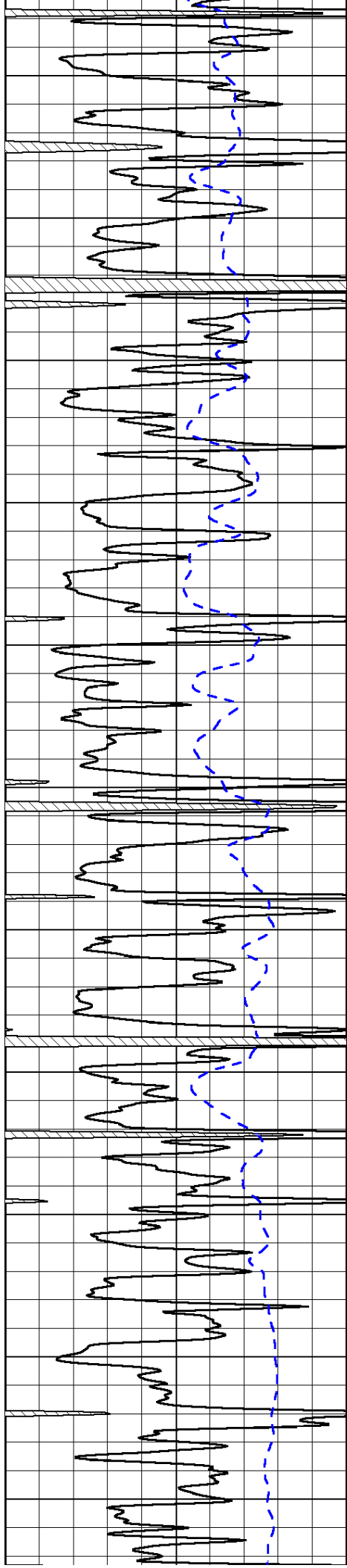












4100

4150

4200

4250

4300

4350

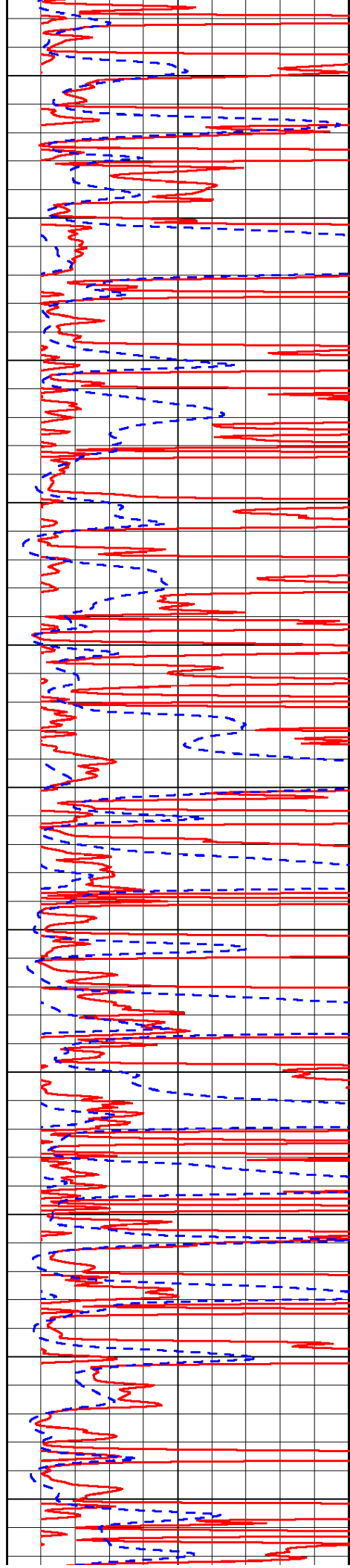
4400

4450

4500

4550

4600



-37

-36

-35

-35

-35

-35

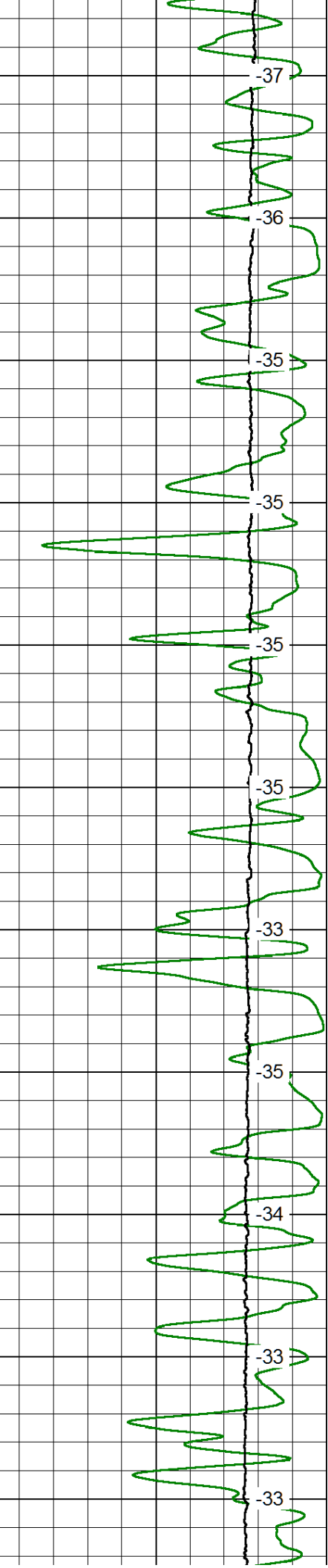
-33

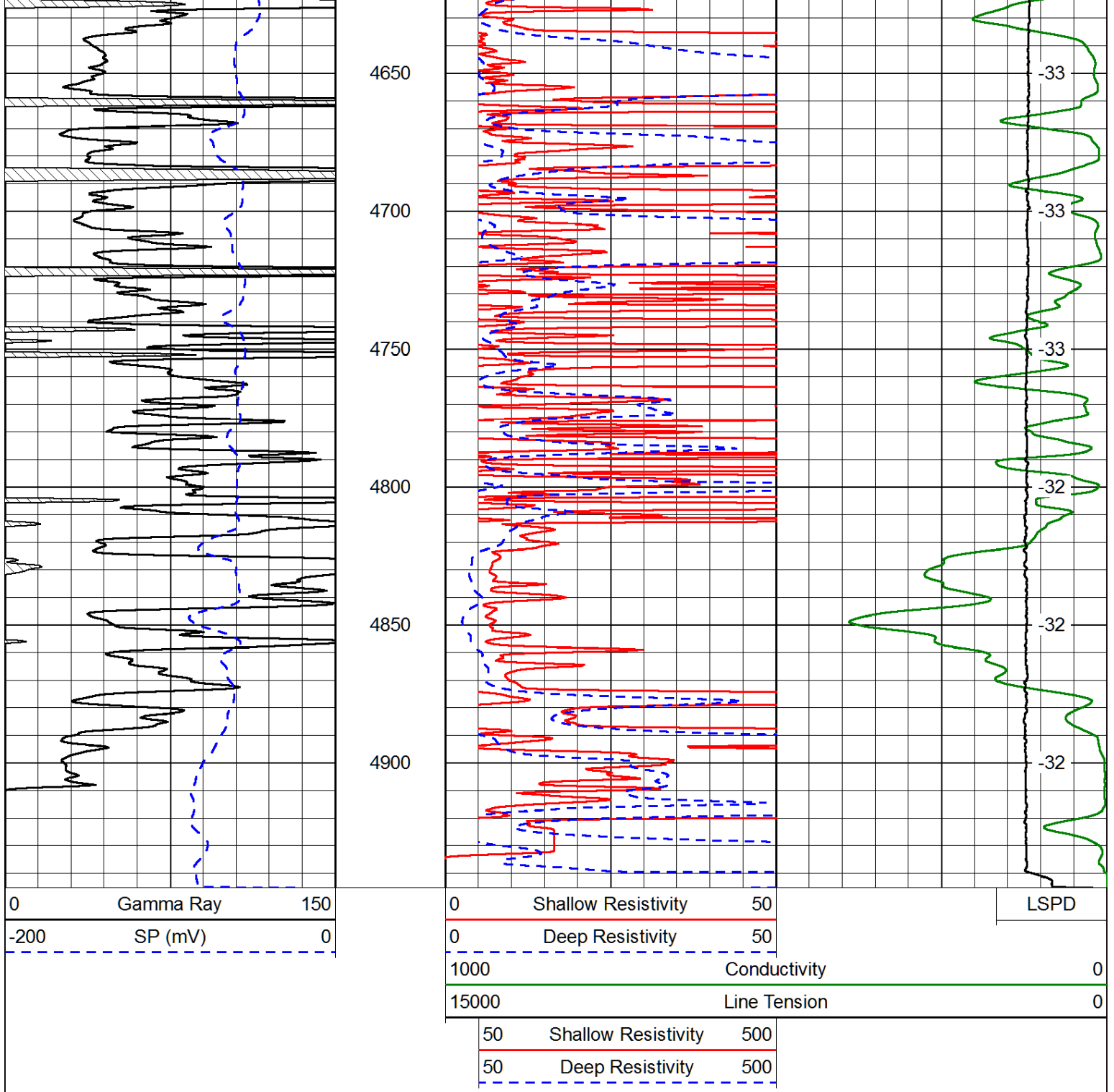
-35

-34

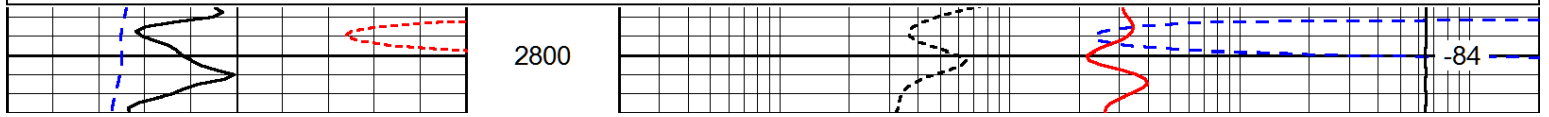
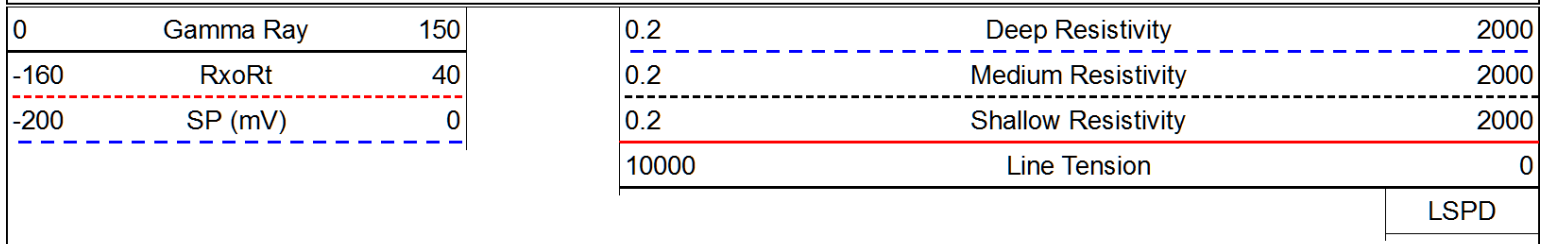
-33

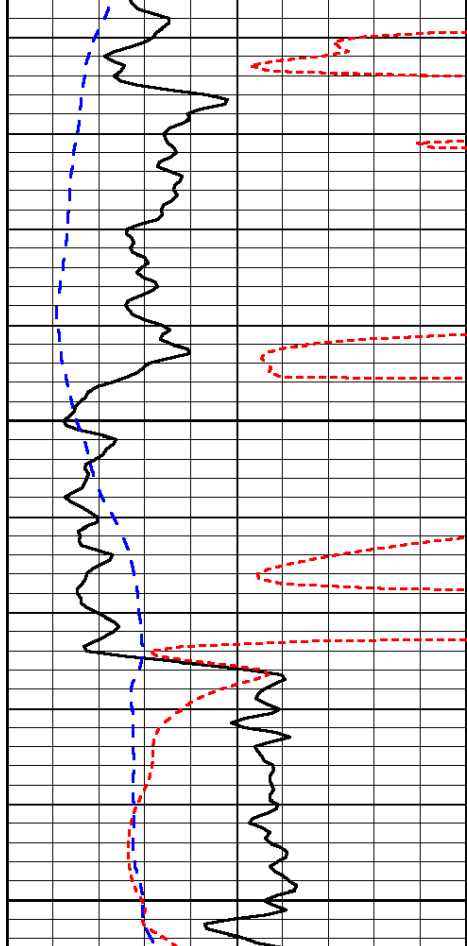
-33





Database File: norstar_solomon_creek_1_34hd.db
 Dataset Pathname: DIL/norstkmel
 Presentation Format: dil
 Dataset Creation: Mon Dec 01 10:04:17 2014
 Charted by: Depth in Feet scaled 1:240

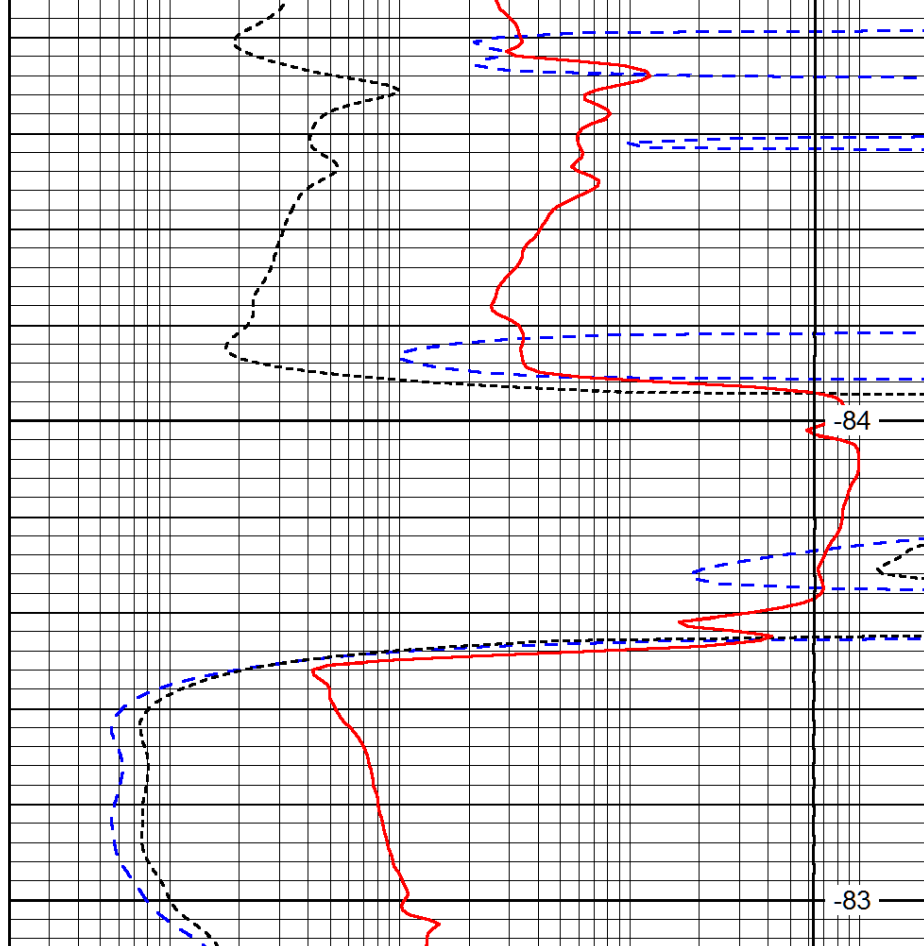




2850

2900

0	Gamma Ray	150
-160	RxoRt	40
-200	SP (mV)	0



-84

-83

0.2	Deep Resistivity	2000
0.2	Medium Resistivity	2000
0.2	Shallow Resistivity	2000
10000	Line Tension	0

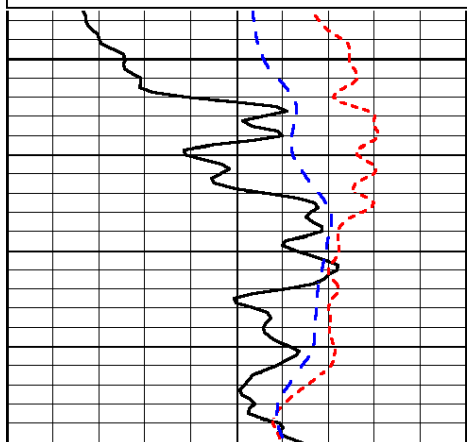
LSPD

Database File: norstar_solomon_creek_1_34hd.db
 Dataset Pathname: DIL/norstkmel
 Presentation Format: dil
 Dataset Creation: Mon Dec 01 10:04:17 2014
 Charted by: Depth in Feet scaled 1:240

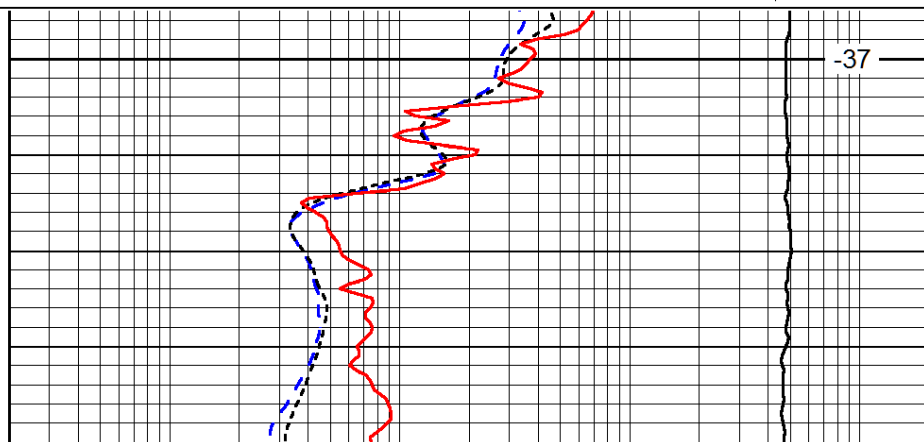
0	Gamma Ray	150
-160	RxoRt	40
-200	SP (mV)	0

0.2	Deep Resistivity	2000
0.2	Medium Resistivity	2000
0.2	Shallow Resistivity	2000
10000	Line Tension	0

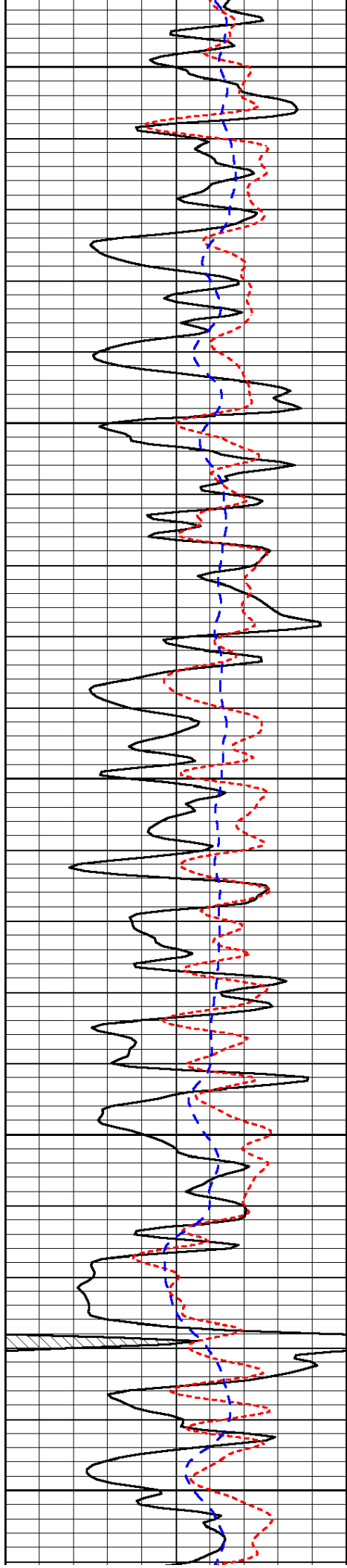
LSPD



3700



-37



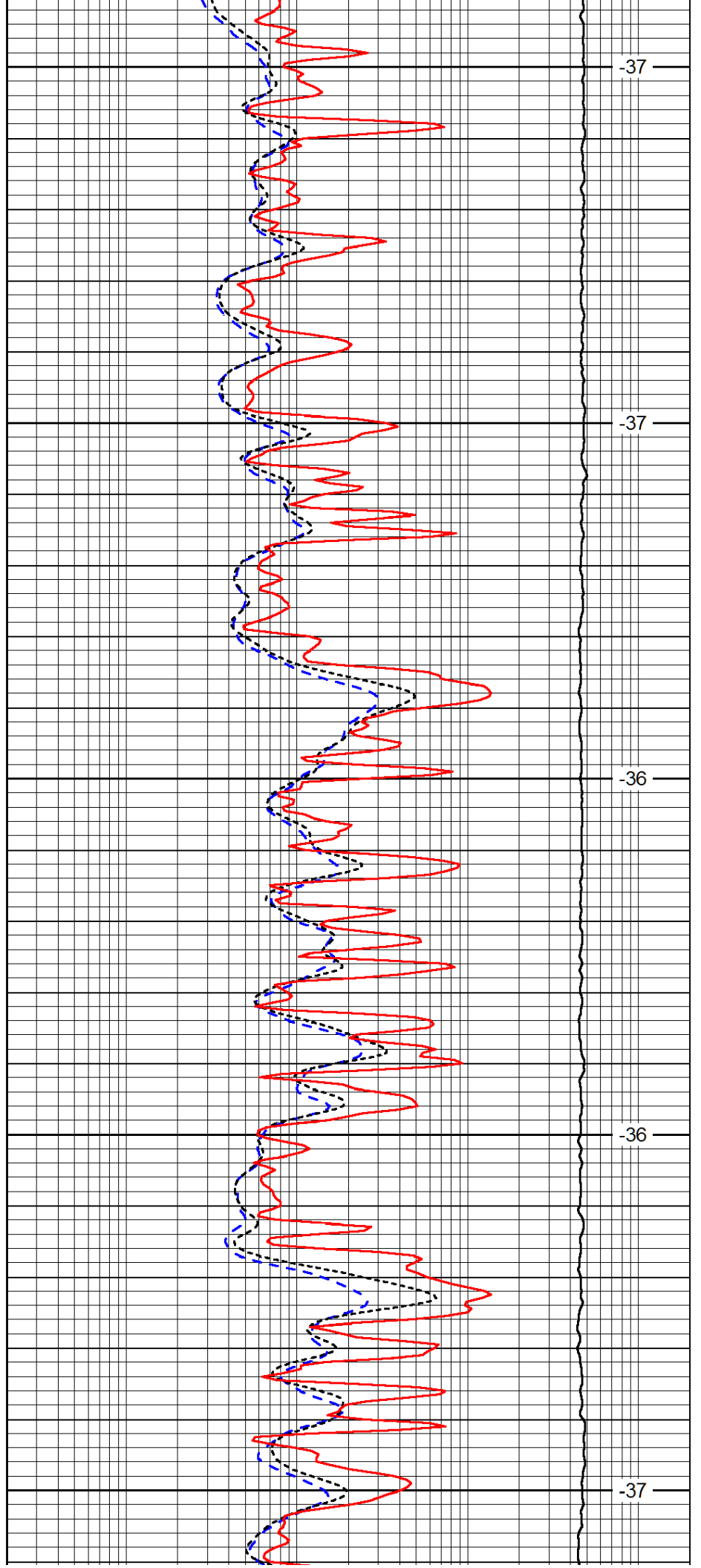
3750

3800

3850

3900

3950



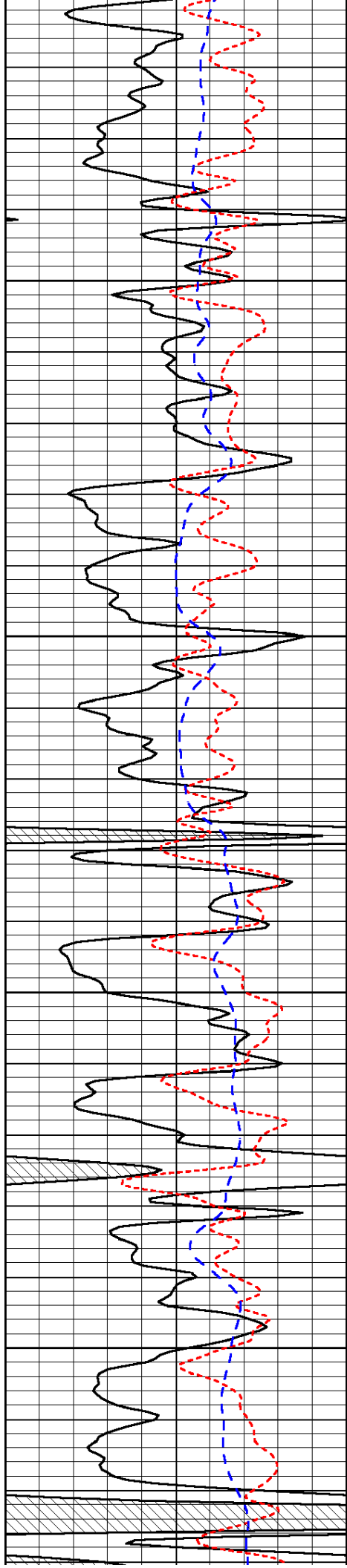
-37

-37

-36

-36

-37

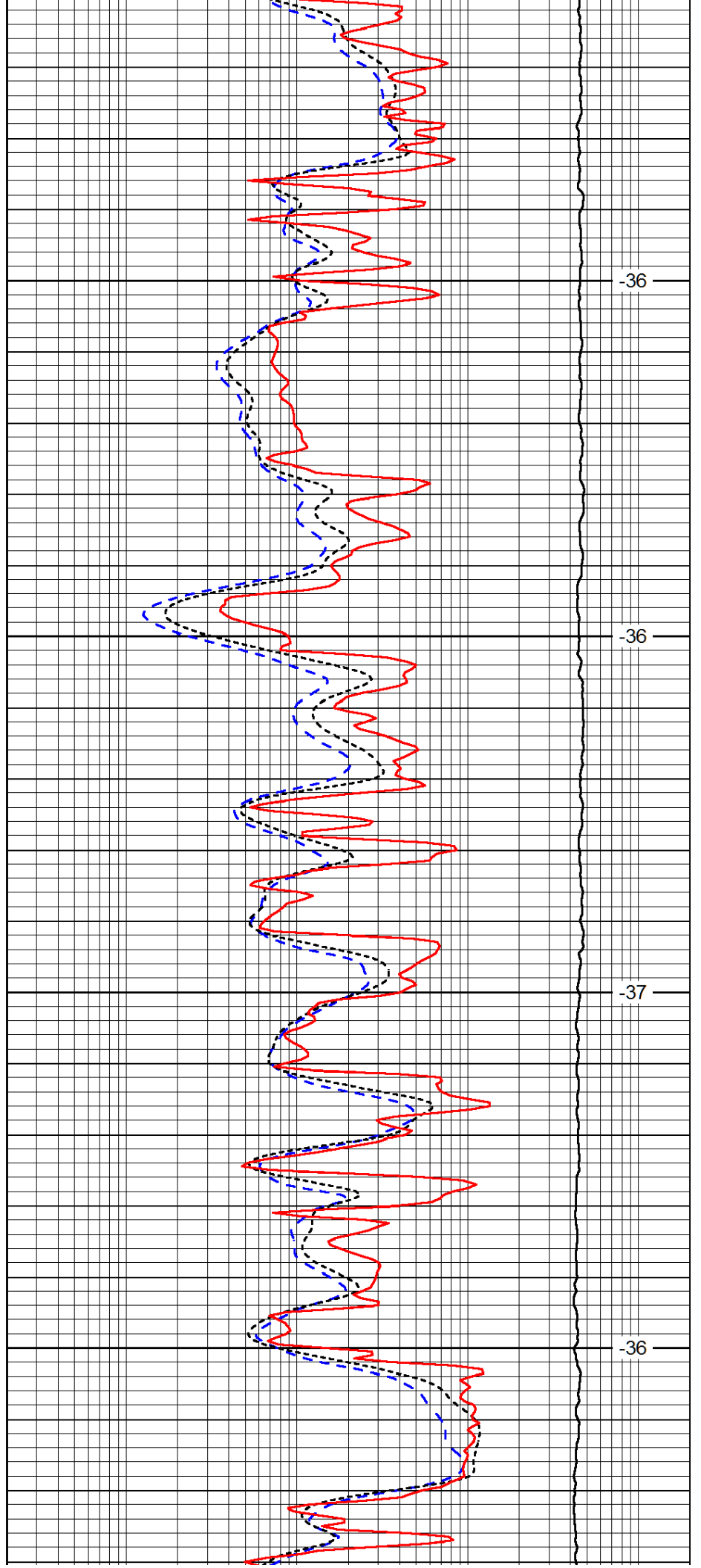


4000

4050

4100

4150

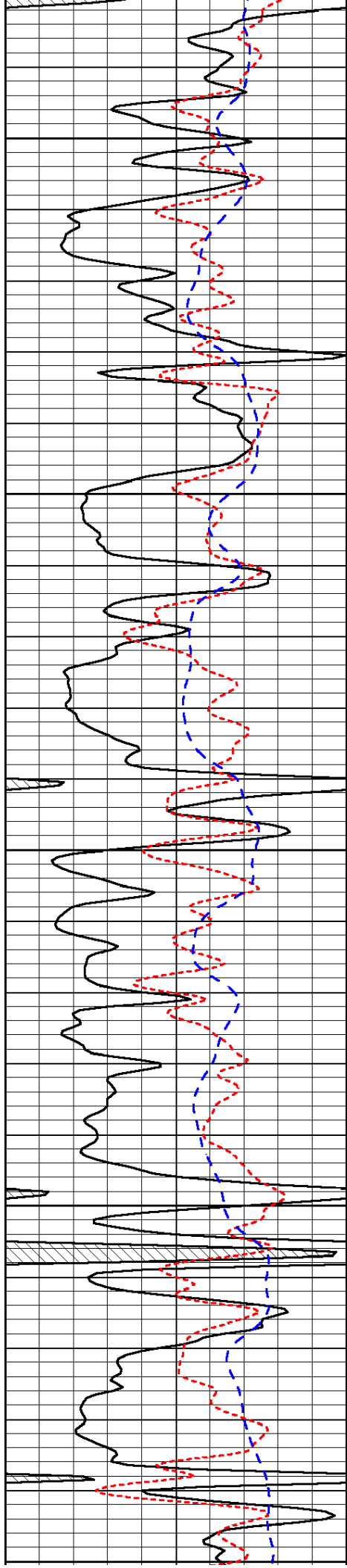


-36

-36

-37

-36



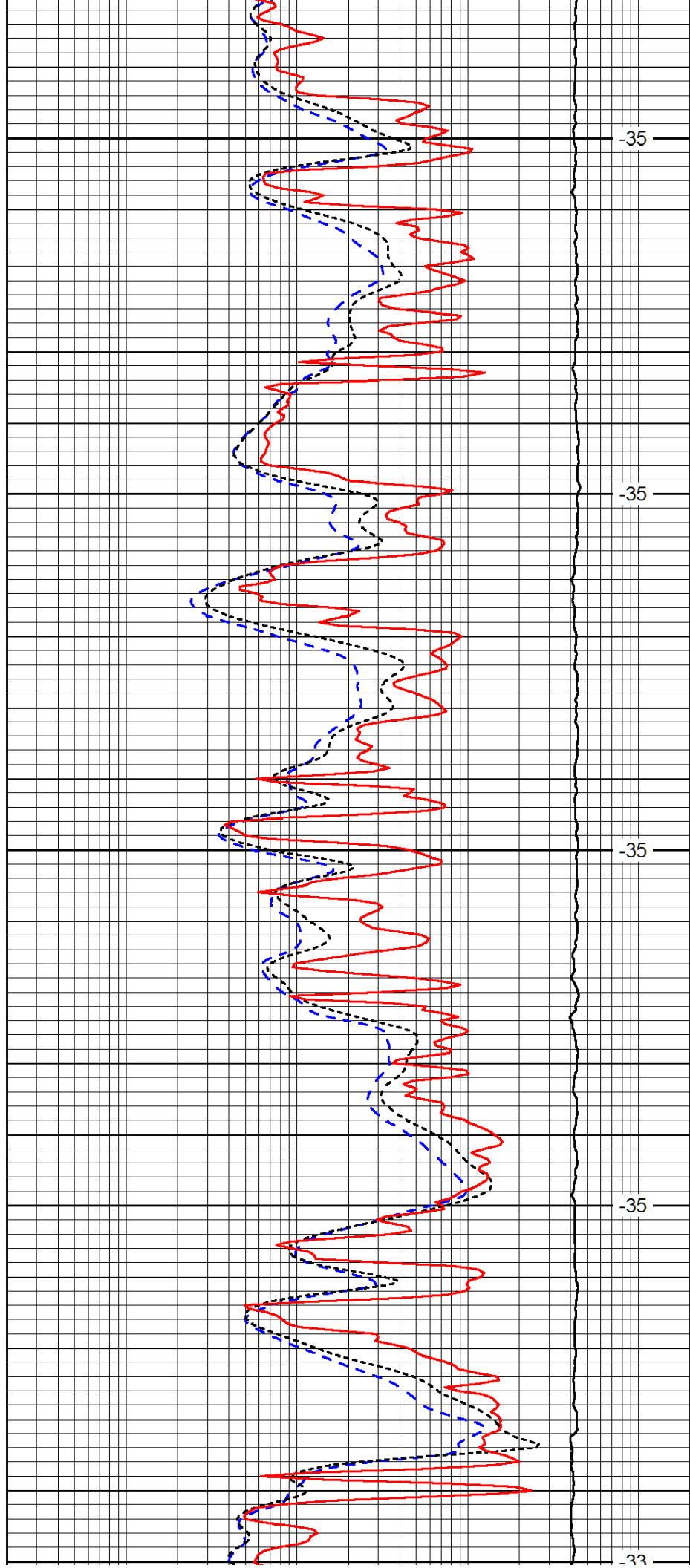
4200

4250

4300

4350

4400



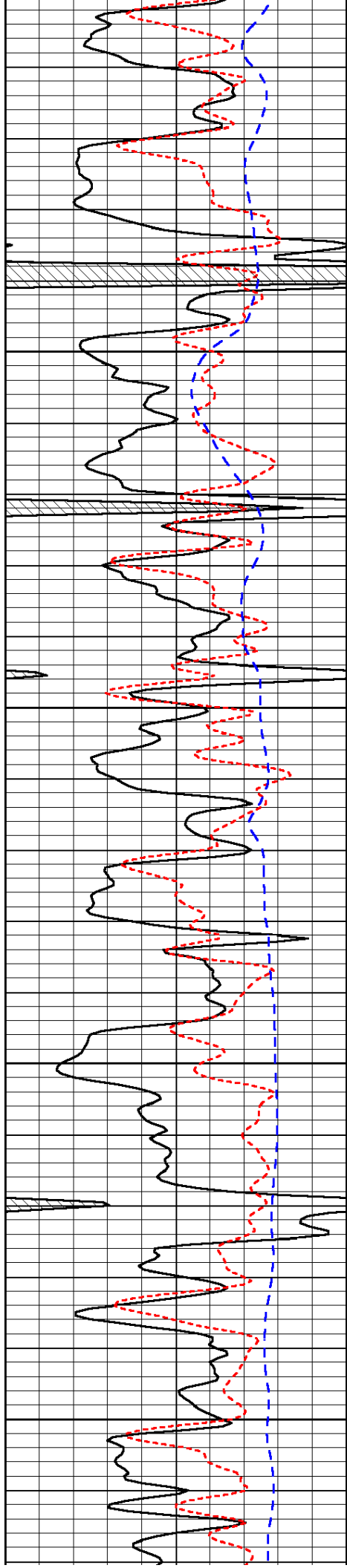
-35

-35

-35

-35

-33



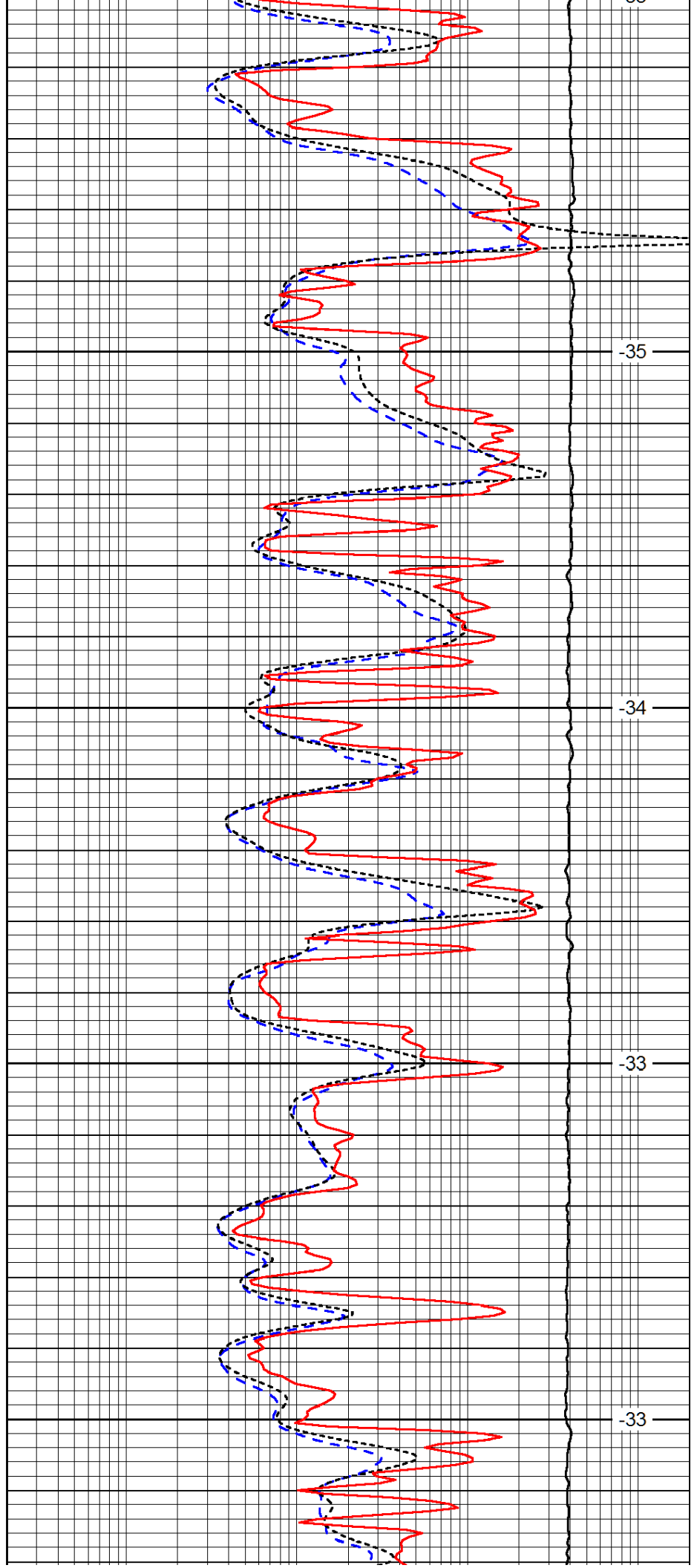
4450

4500

4550

4600

4650



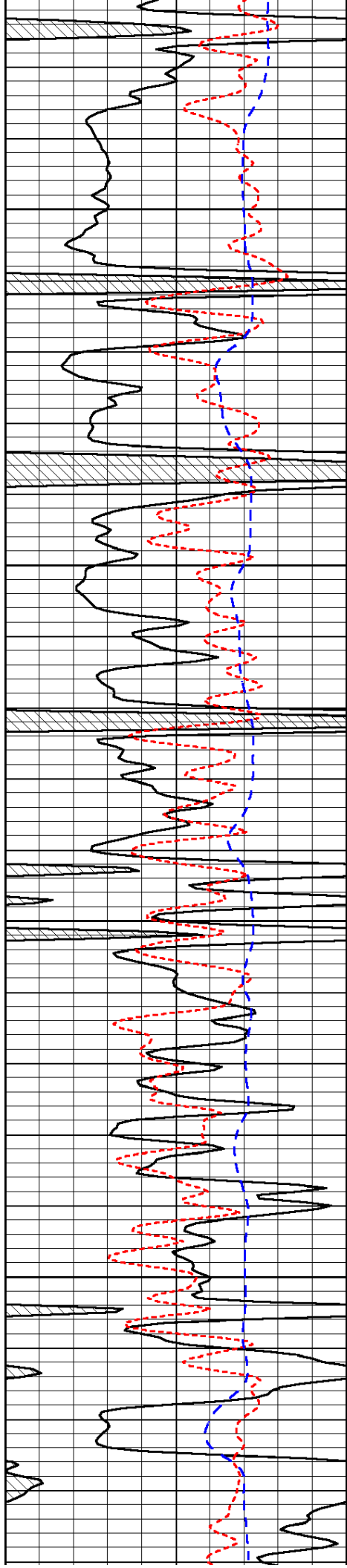
-35

-34

-33

-33

-32

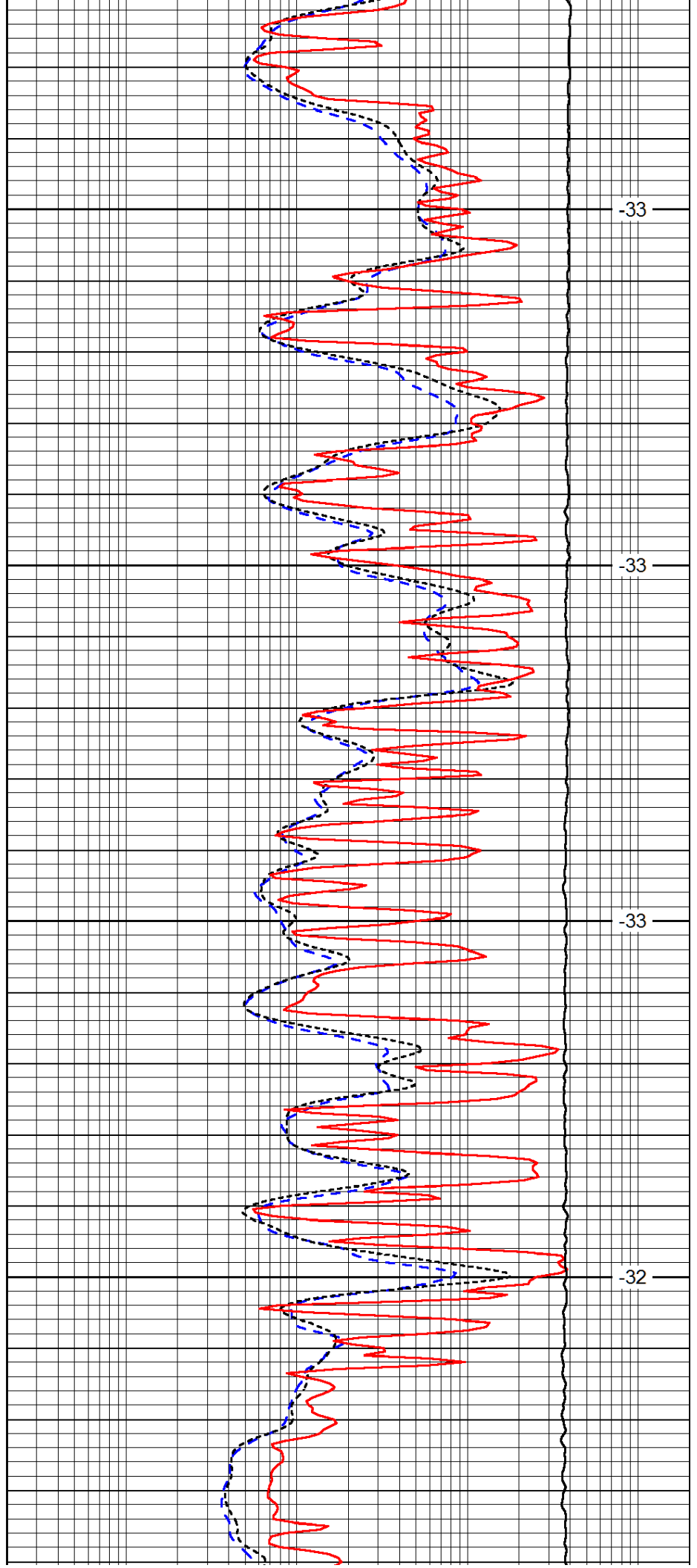


4650

4700

4750

4800

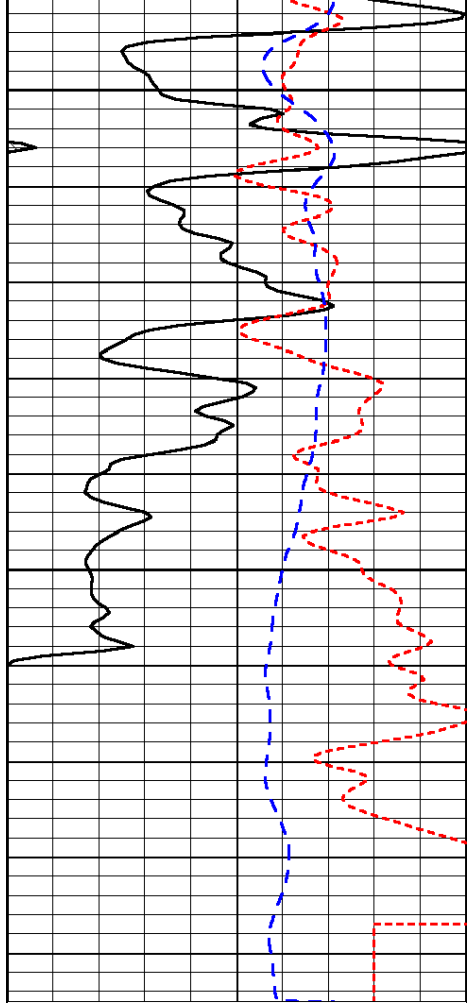


-33

-33

-33

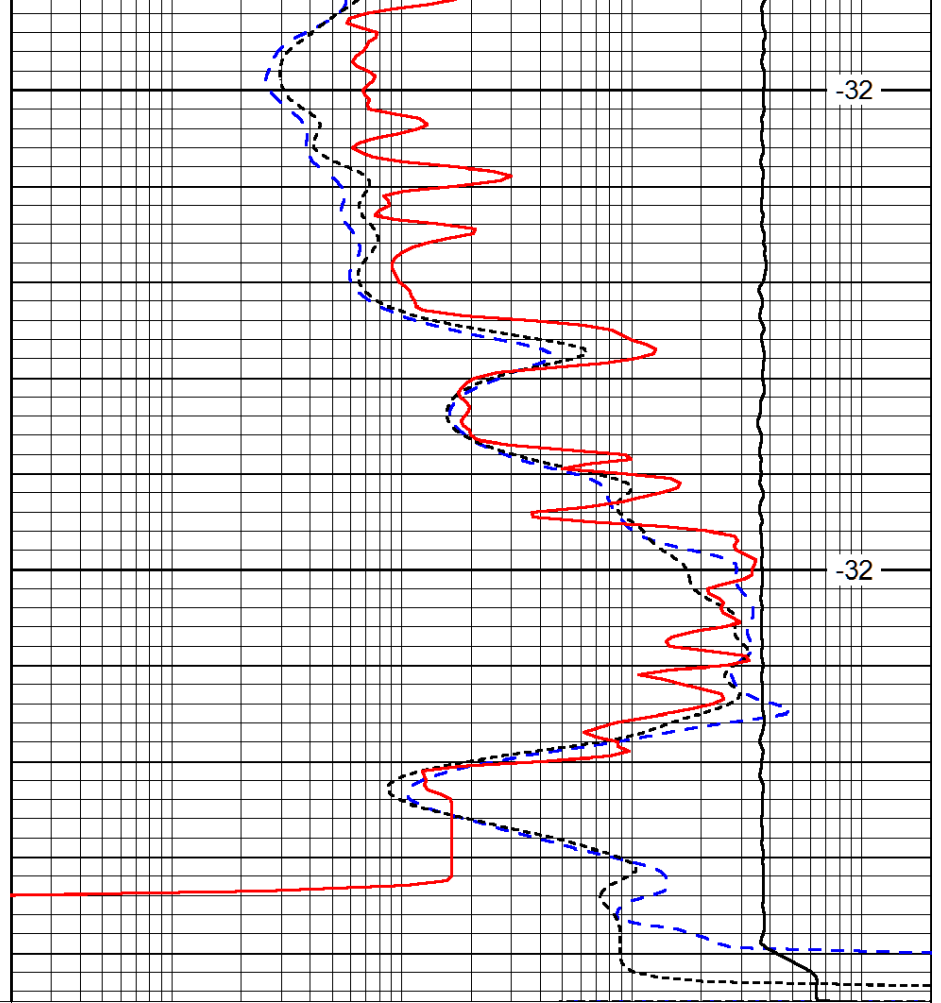
-32



4850

4900

0	Gamma Ray	150
-160	RxoRt	40
-200	SP (mV)	0



-32

-32

0.2	Deep Resistivity	2000
0.2	Medium Resistivity	2000
0.2	Shallow Resistivity	2000
10000	Line Tension	0

LSPD