



Pioneer Energy Services

# Microresistivity Log

15-051-26,763-00-00

API No.

Company **TDI, Inc.**

Well **Charlotte Trust No.2 Twin**

Field **Leiker Southeast**

County **Ellis** State **Kansas**

Location **1650' FNL & 1800' FEL**

Sec: **23** Twp: **15S** Rge: **18W**

Other Services  
CNL/CDL  
DIL

Permanent Datum **Ground Level** Elevation **1953**

Log Measured From **Kelly Bushing** 10 Ft. Above Perm. Datum

Drilling Measured From **Kelly Bushing** K.B. 1963  
D.F. 1953  
G.L. 1953

Date **12-1-2014**

Run Number **Two**

Depth Driller **3650**

Depth Logger **3644**

Bottom Logged Interval **3643**

Top Log Interval **2850**

Casing Driller **8.625 @ 1137**

Casing Logger **1137**

Bit Size **7.875**

Type Fluid in Hole **Chemical**

Salinity, ppm CL **2,000**

Density / Viscosity **9.4 60**

pH / Fluid Loss **10.5 7.6**

Source of Sample **Flowline**

Rm @ Meas. Temp **1.1 @ 50**

Rmf @ Meas. Temp **.83 @ 50**

Rmc @ Meas. Temp **1.49 @ 50**

Source of Rmf / Rmc **Charts**

Rm @ BHT **.49 @ 112**

Operating Rig Time **3 Hours**

Max Rec. Temp. F **112**

Equipment Number **51**

Location **Hays**

Recorded By **C. Desaire**

Witnessed By **Tom Denning**

<<< Fold Here >>>

All interpretations are opinions based on inferences from electrical or other measurements and we cannot and do not guarantee the accuracy or correctness of any interpretation, and we shall not, except in the case of gross or willful negligence on our part, be liable or responsible for any loss, costs, damages, or expenses incurred or sustained by anyone resulting from any interpretation made by any of our officers, agents or employees. These interpretations are also subject to our general terms and conditions set out in our current Price Schedule.

### Comments

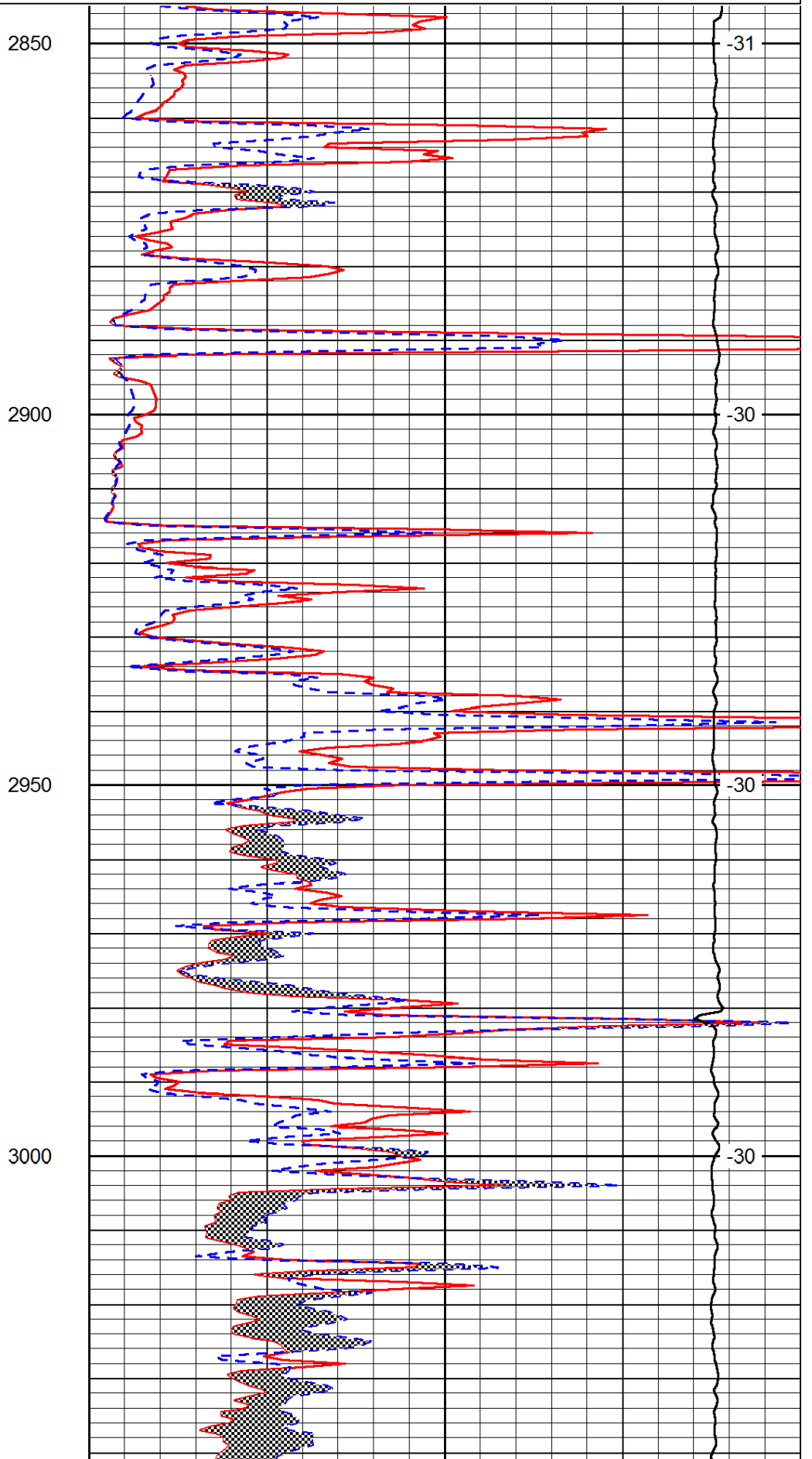
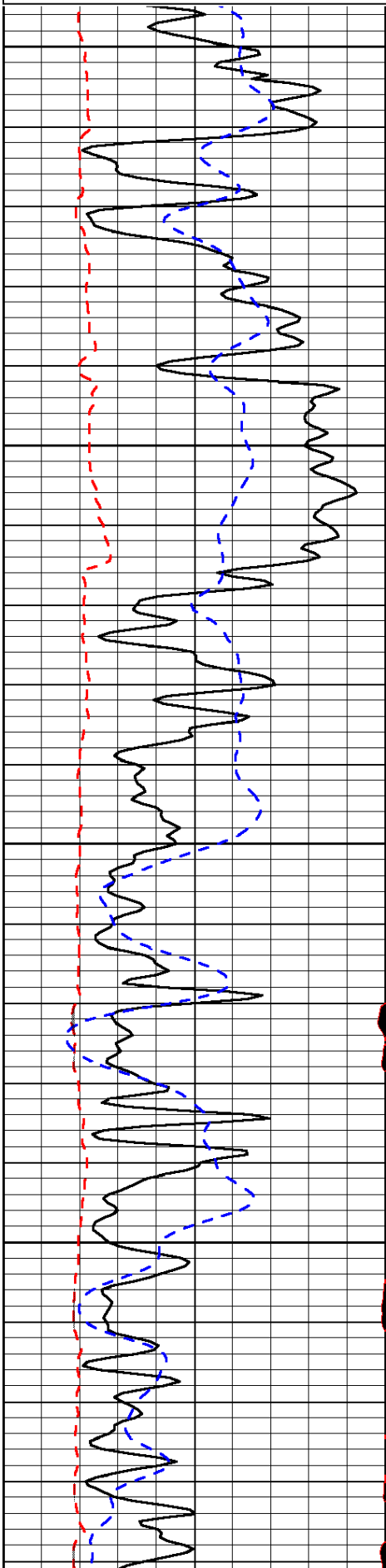
Thank you for using Log-Tech, Inc.  
(785) 625-3858  
  
Hays KS, S on Hwy 183 to Hays Mack,  
1 1/2 E, S Into

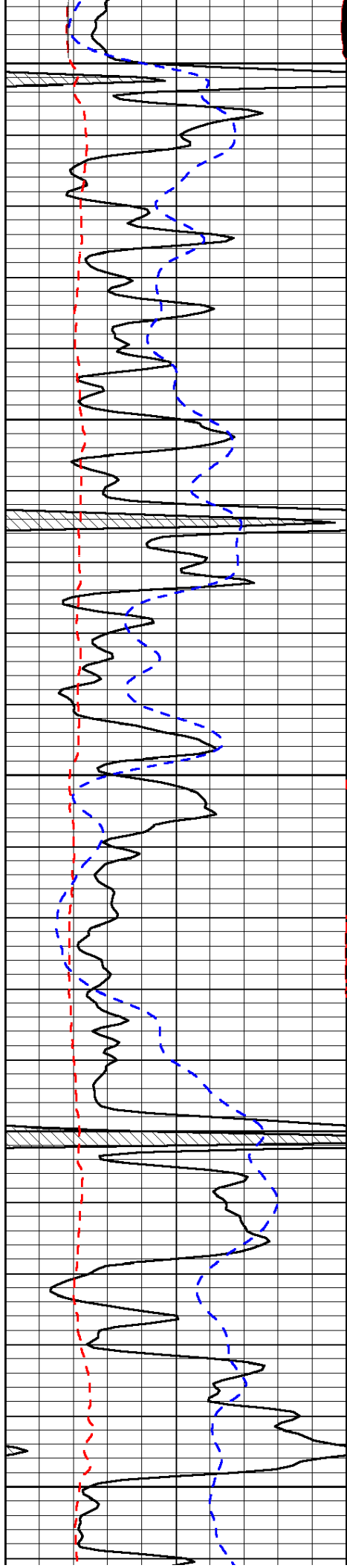
Database File: tdihd.db  
Dataset Pathname: dil/tdistk  
Presentation Format: micro  
Dataset Creation: Mon Dec 01 14:41:33 2014  
Charted by: Depth in Feet scaled 1:240

0	Gamma Ray	150
6	MCAL (GAPI)	16
2.875	Mud Cake (GAPI)	7.875
-200	SP (mV)	0

0	Micro Inverse 1 X 1	40
0	Micro Normal 2"	40
10000	Line Weight	0

LSPD





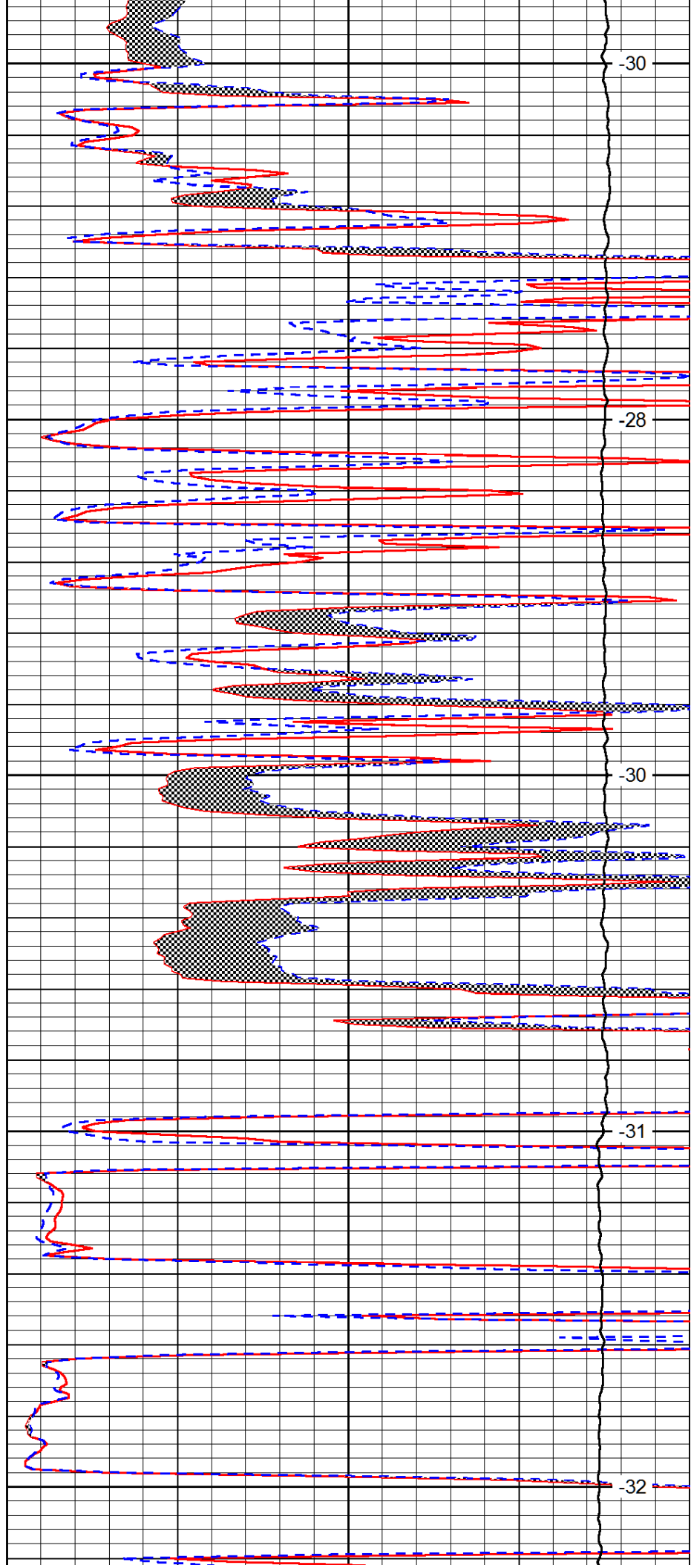
3050

3100

3150

3200

3250



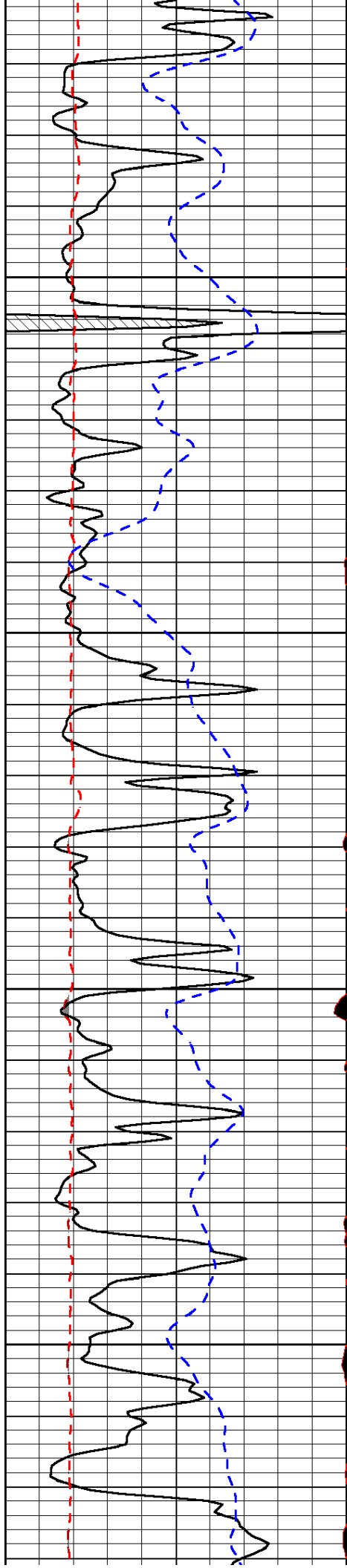
-30

-28

-30

-31

-32

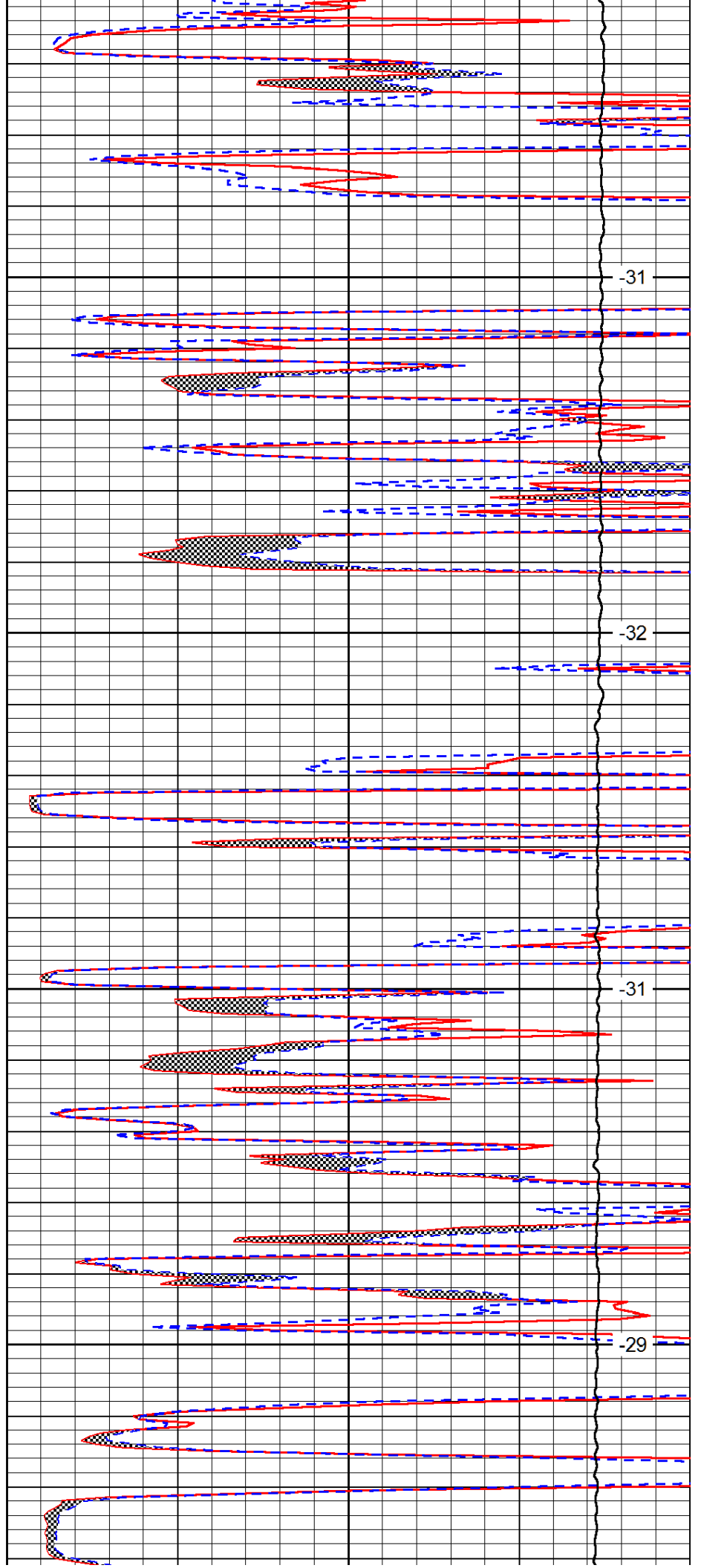


3300

3350

3400

3450

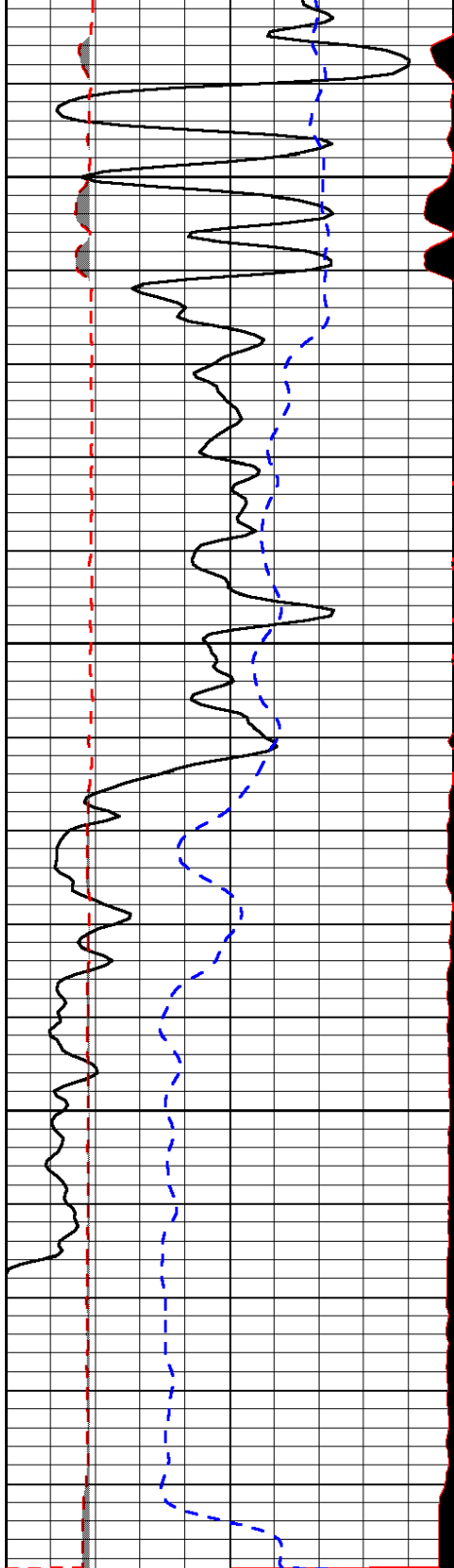


-31

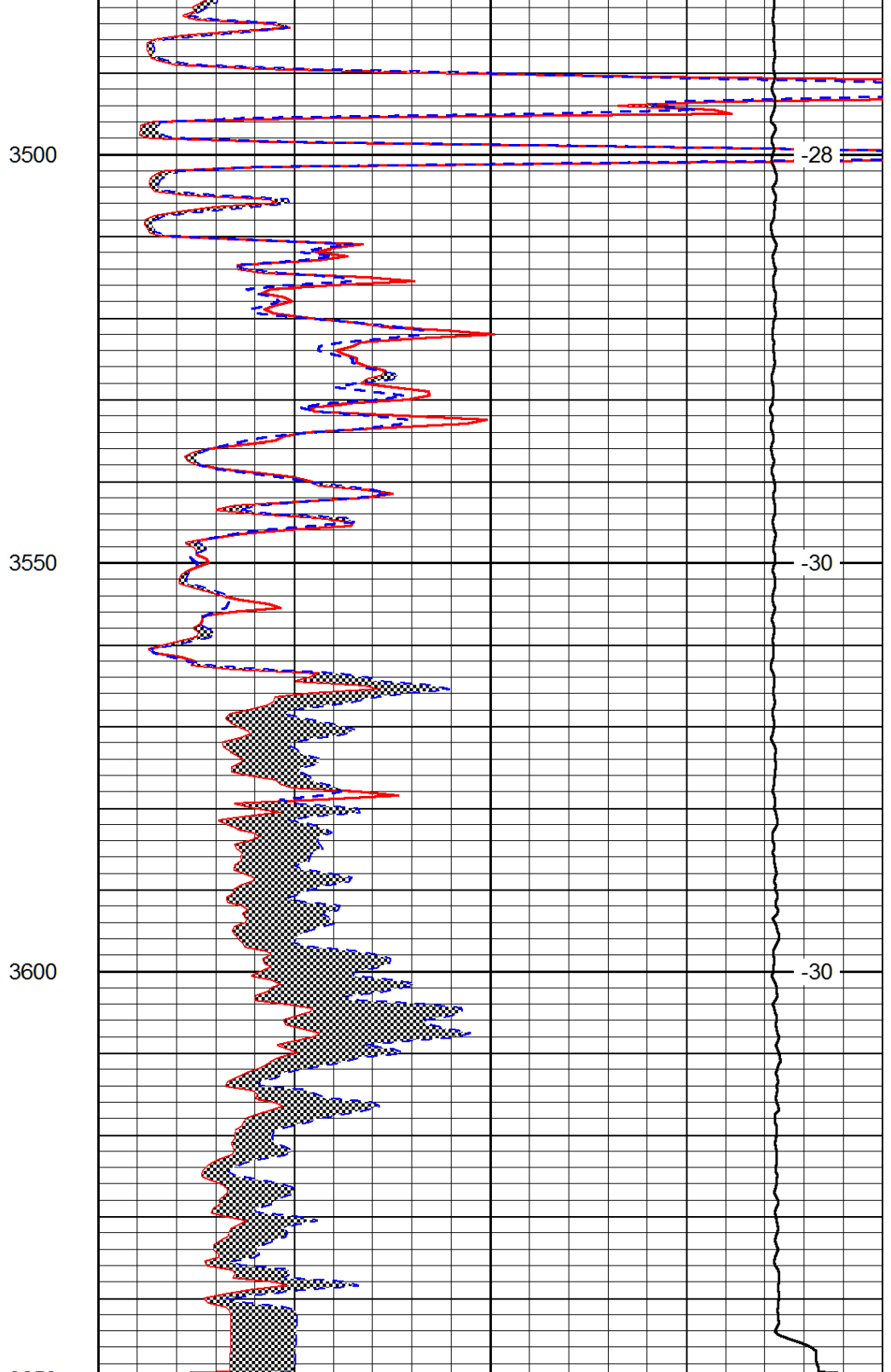
-32

-31

-29



0	Gamma Ray	150
6	MCAL (GAPI)	16
2.875	Mud Cake (GAPI)	7.875
-200	SP (mV)	0



0	Micro Inverse 1 X 1	40
0	Micro Normal 2''	40
10000	Line Weight	0

LSPD