



Pioneer Energy Services

Dual Compensated Porosity Log

Company Norstar Petroleum, Inc.
Well Solomon Creek No. 1-34
Field Wildcat
County Thomas
State Kansas
Location 1143' FSL & 2314' FWL
Sec: 34 **Twp:** 9S **Rge:** 35W

Permanent Datum Ground Level Elevation 3326
Log Measured From Kelly Bushing 5 Ft. Above Perm. Datum
Drilling Measured From Kelly Bushing
Date 12/1/14
Run Number One
Type Log CNL / CDL
Depth Driller 4938
Depth Logger 4939
Bottom Logged Interval 4911
Top Logged Interval 3700
Type Fluid In Hole Chemical
Salinity, PPM CL 7,000
Density 9.3
Level Full
Max. Rec. Temp. F 125
Operating Rig Time 3 Hours
Equipment -- Location 91 Hays
Recorded By J. Henrickson
Witnessed By Tyler Sanders

Other Services
 DIL/MEL
Elevation
 K.B. 3331
 D.F. G.I.L. 3326

Borehole Record		Casing Record					
Run No	Bit	From	To	Size	Wgt.	From	To
One	12.25	00	304	8.625	23#	00	304
Two	7.875	304	TD				

<<< Fold Here >>>

All interpretations are opinions based on inferences from electrical or other measurements and we cannot and do not guarantee the accuracy or correctness of any interpretation, and we shall not, except in the case of gross or willful negligence on our part, be liable or responsible for any loss, costs, damages, or expenses incurred or sustained by anyone resulting from any interpretation made by any of our officers, agents or employees. These interpretations are also subject to our general terms and conditions set out in our current Price Schedule.

Comments

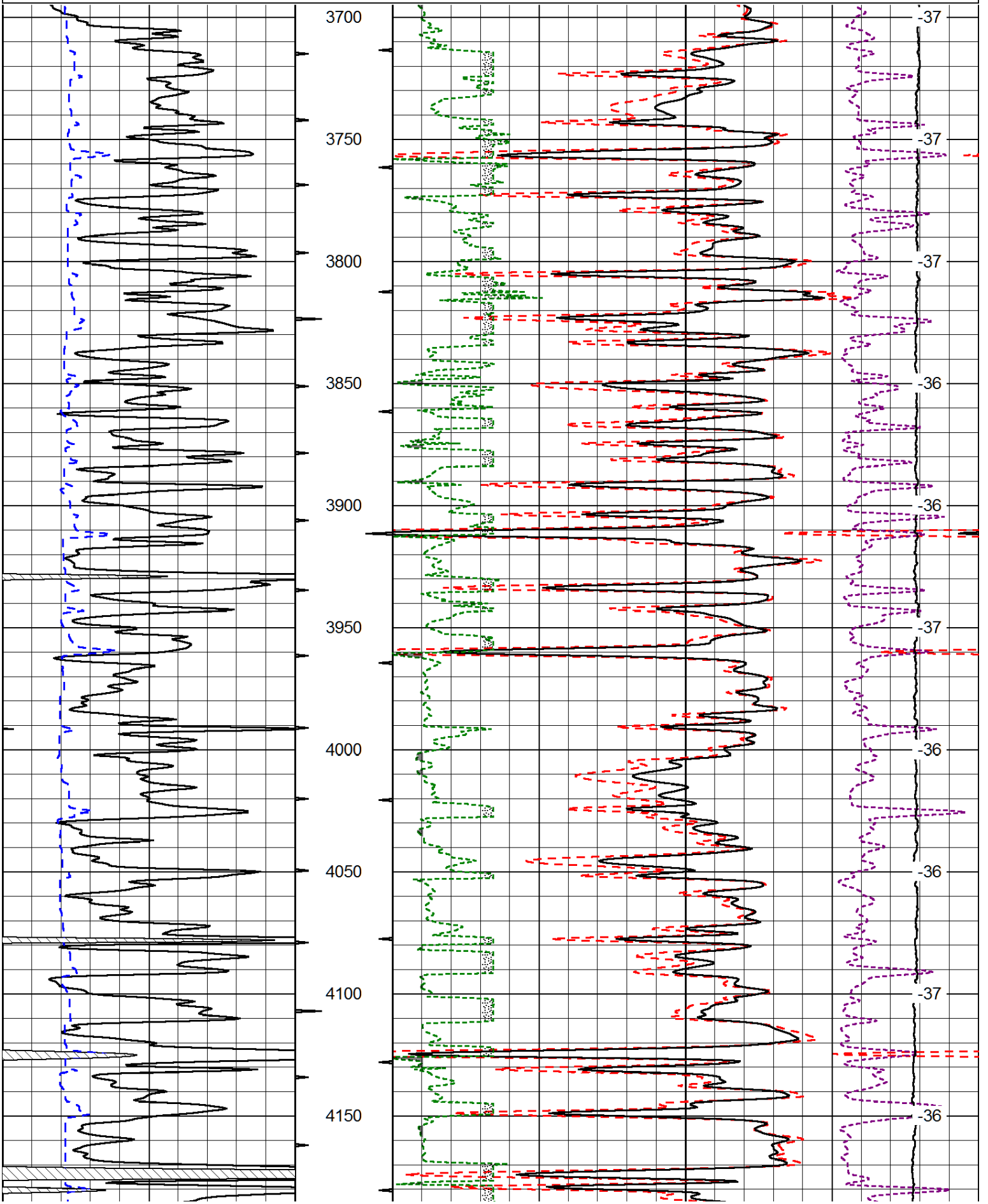
Thank you for using Log-Tech, Inc.
 (785) 625-3858

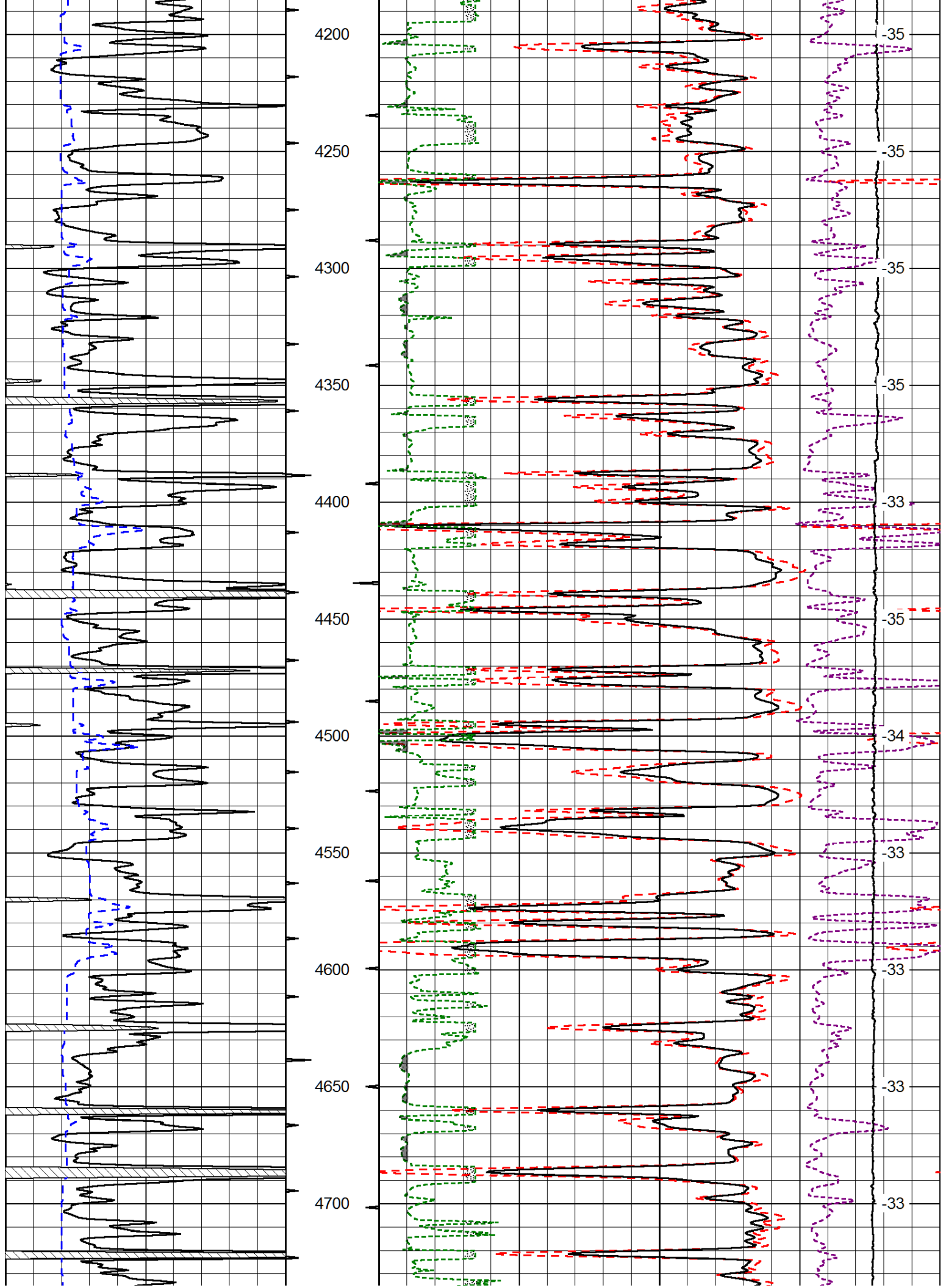
 Winona Kansas
 5 North to Curve, 2 East, 6 North, 1/2 West, North Into

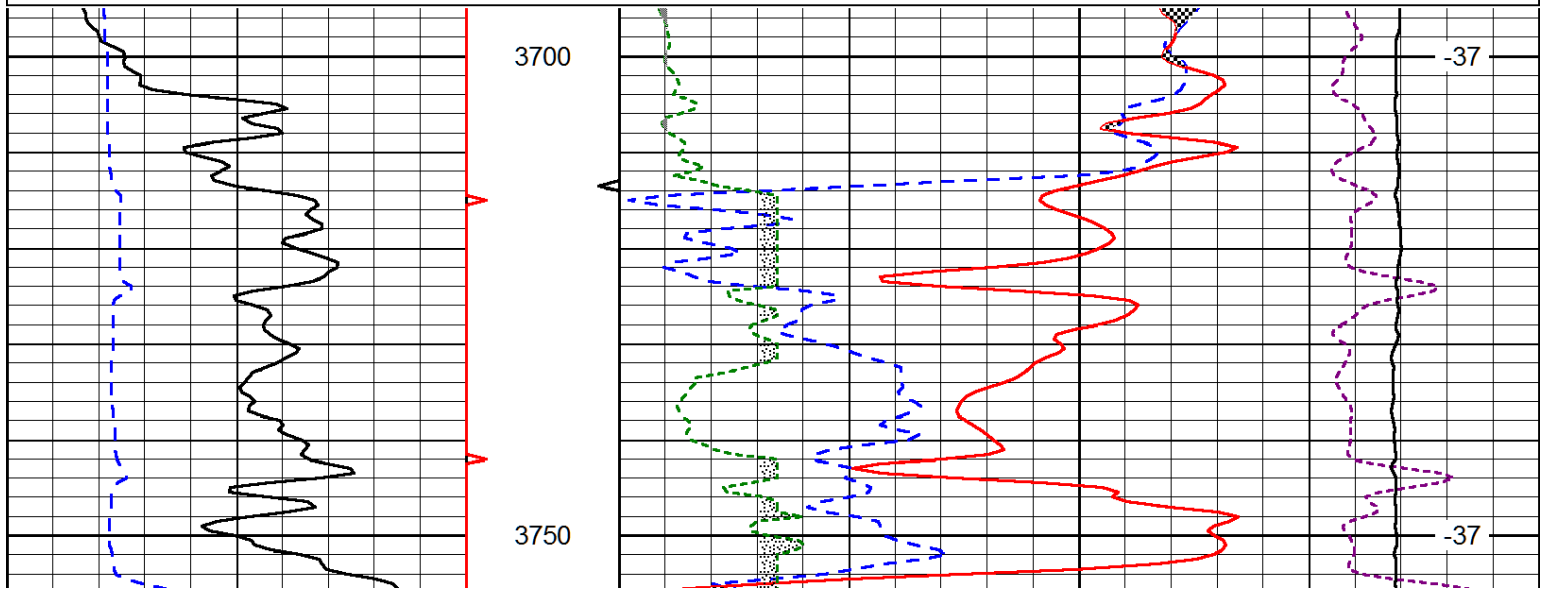
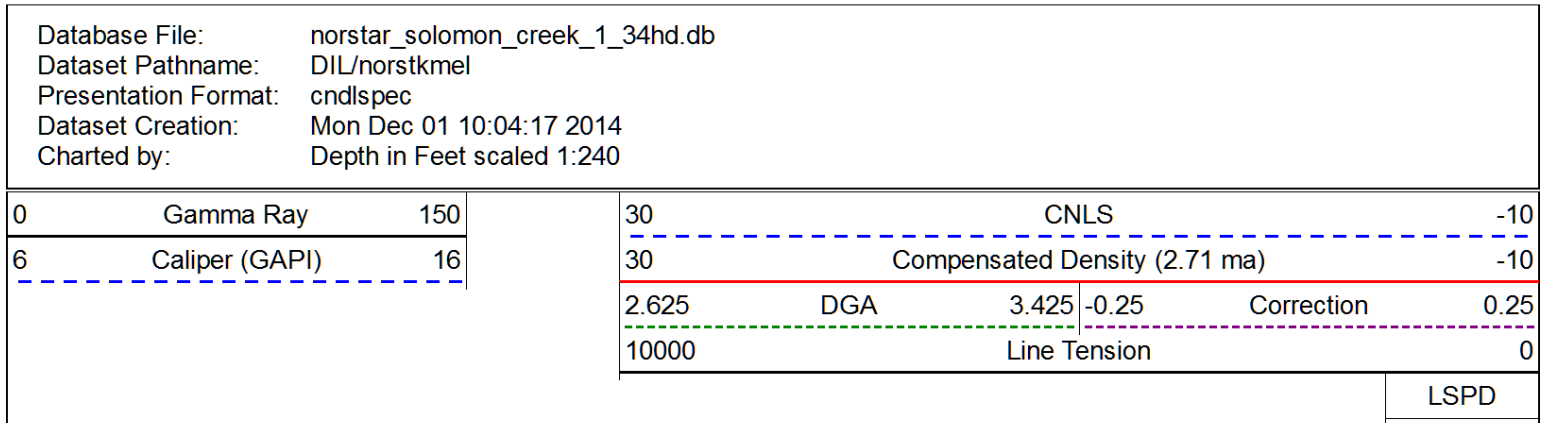
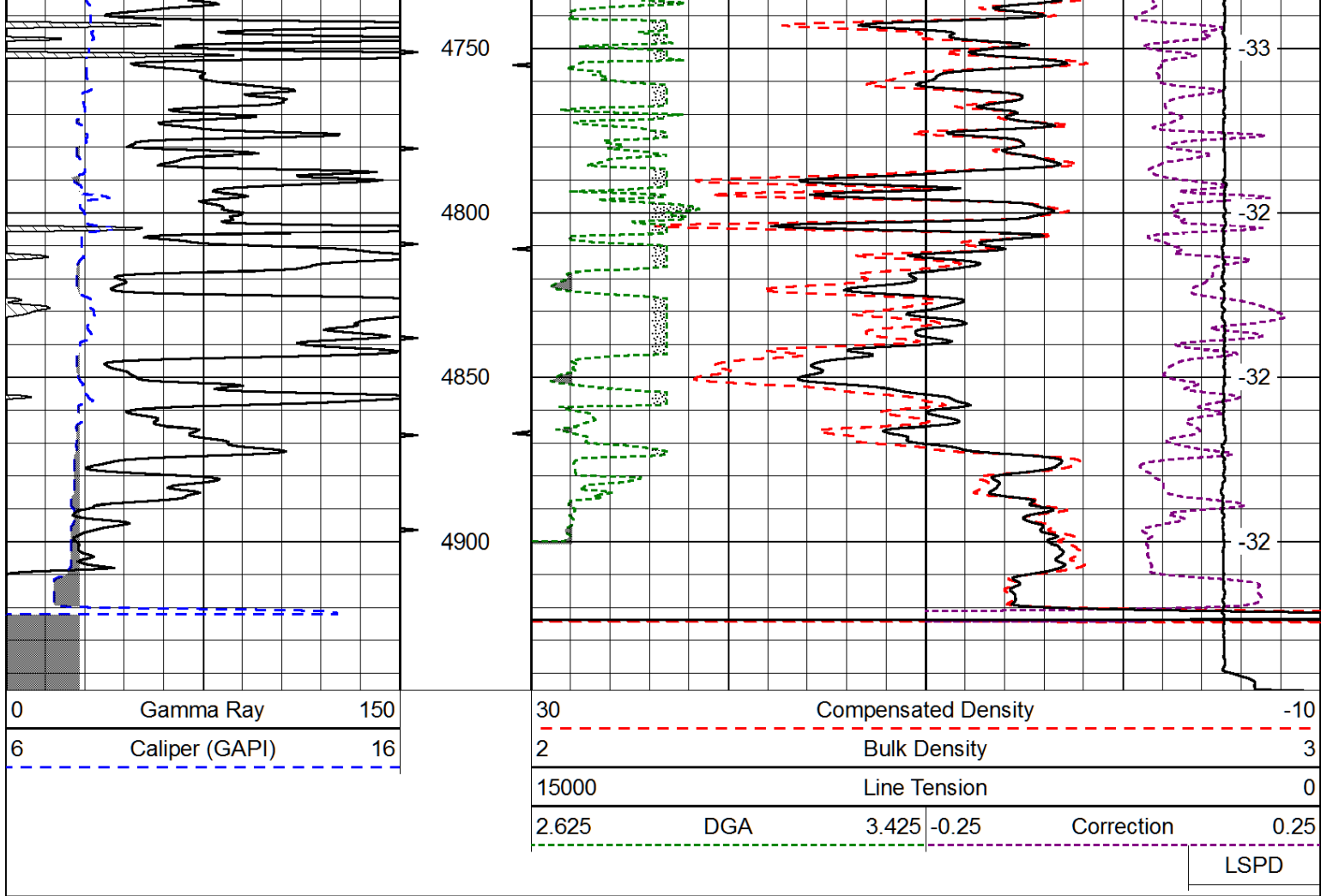
Database File: norstar_solomon_creek_1_34hd.db
 Dataset Pathname: DIL/norstkmel
 Presentation Format: cdl
 Dataset Creation: Mon Dec 01 10:04:17 2014
 Charted by: Depth in Feet scaled 1:600

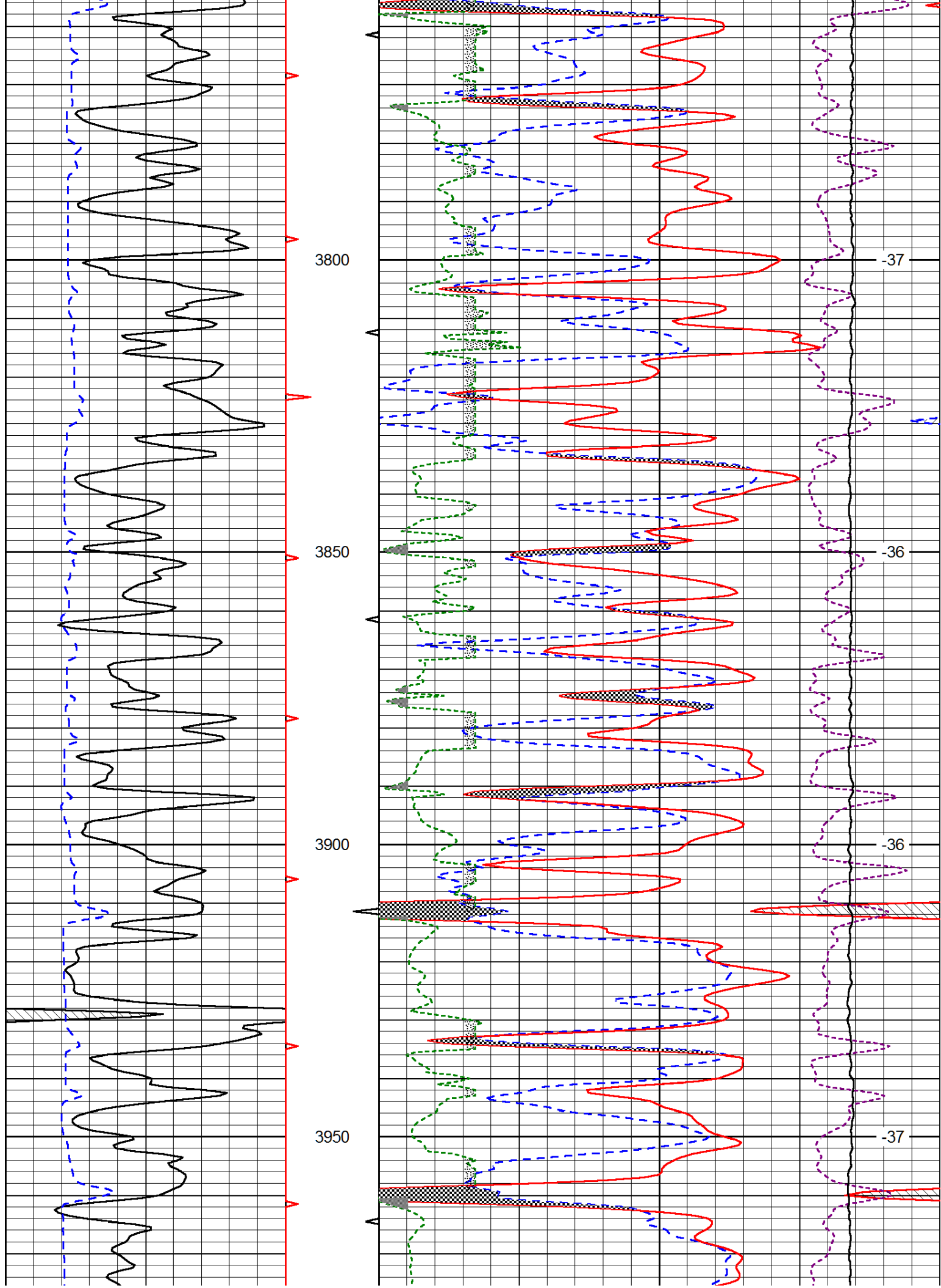
0	Gamma Ray	150
6	Caliper (GAPI)	16

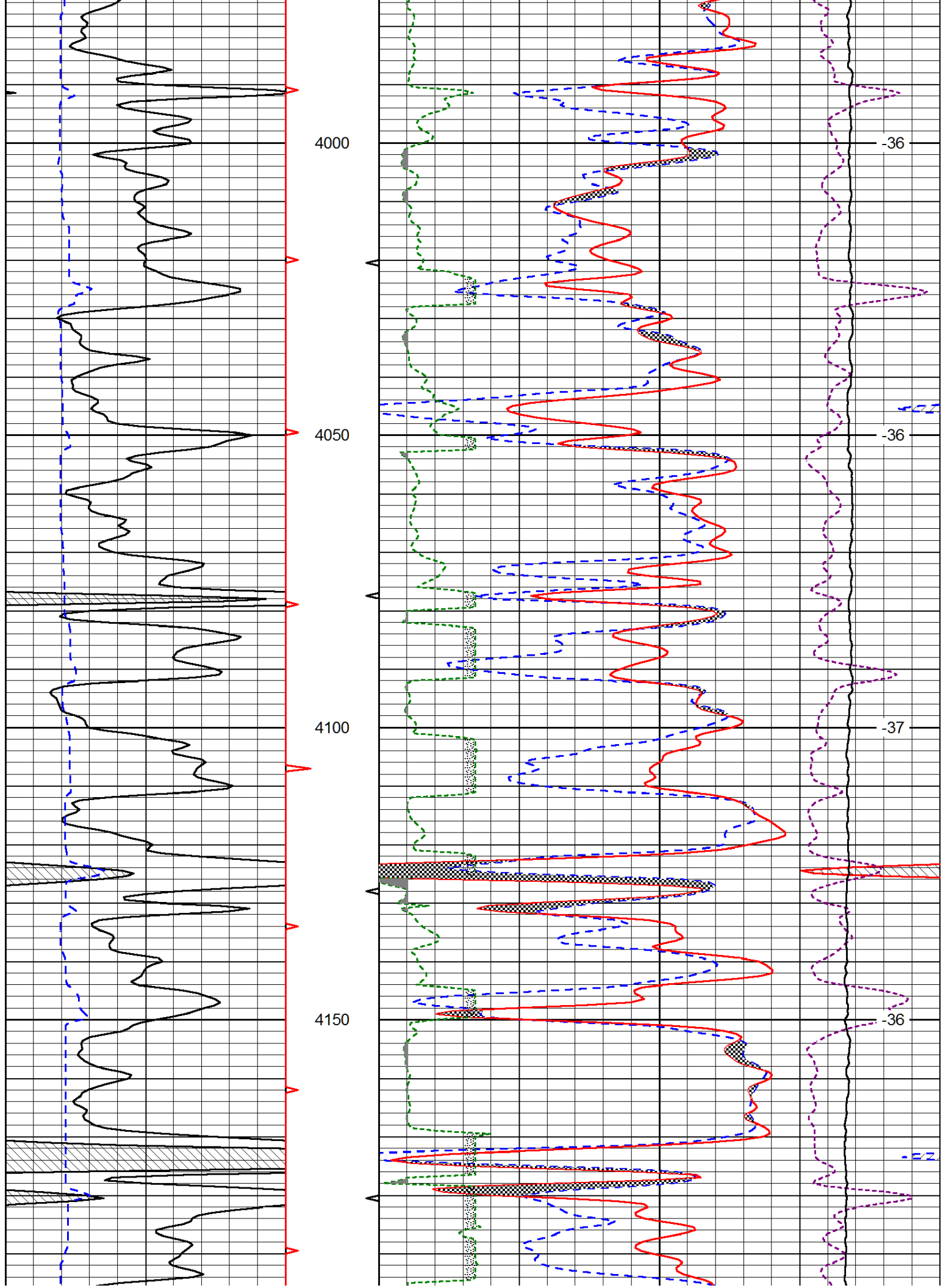
30	Compensated Density		-10
2	Bulk Density		3
15000	Line Tension		0
2.625	DGA	3.425	-0.25
			Correction
			0.25
			LSPD

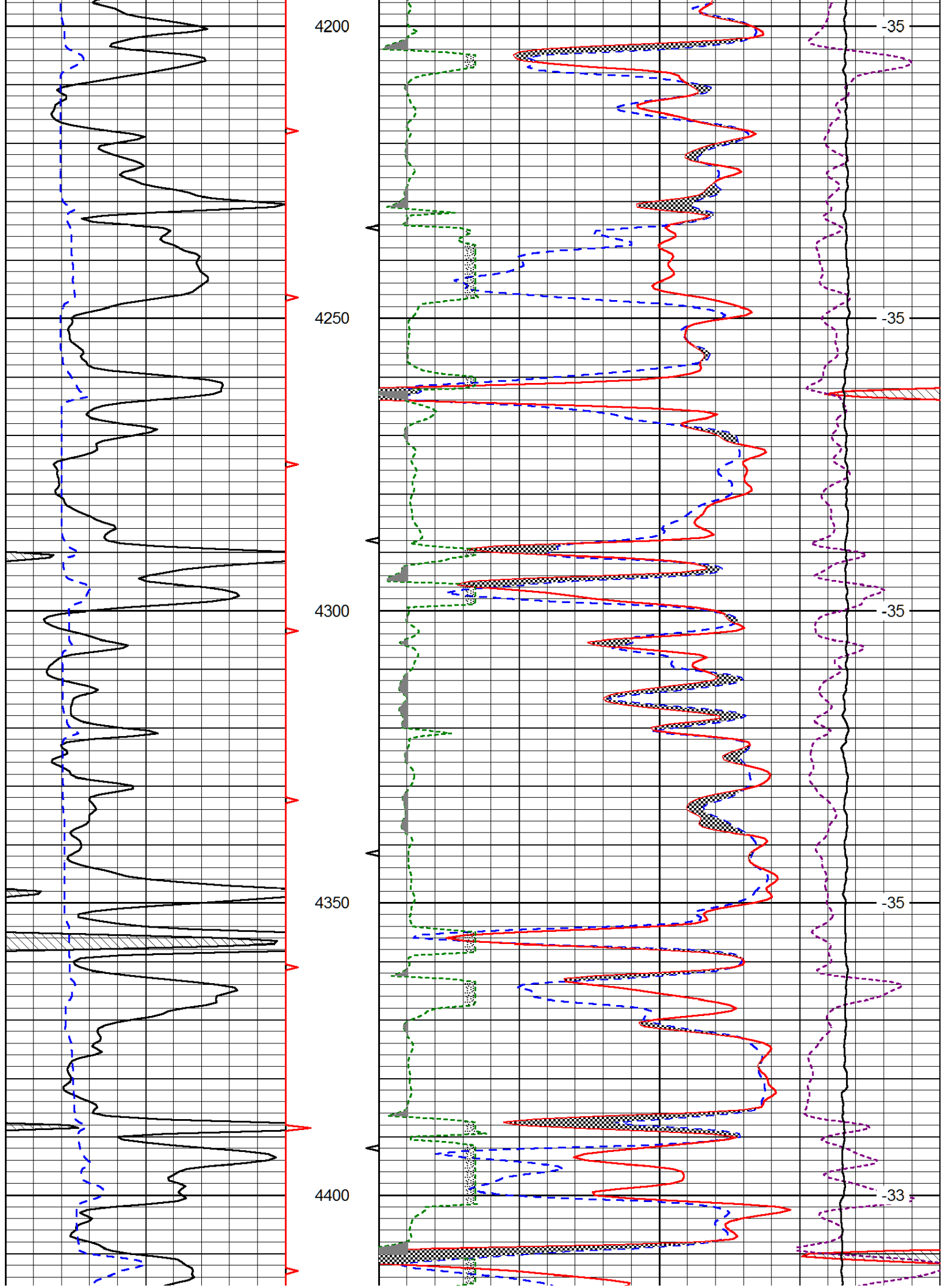


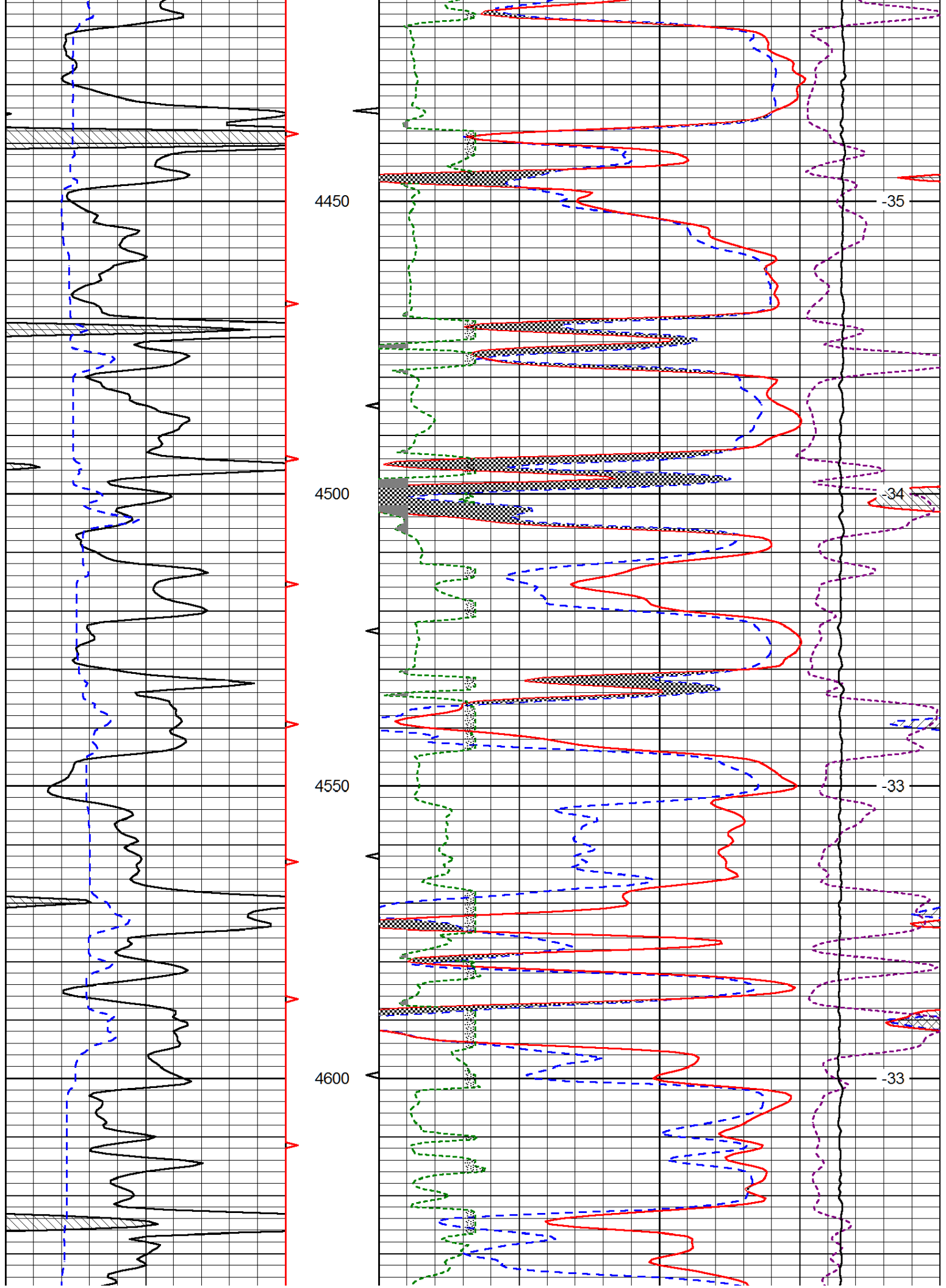


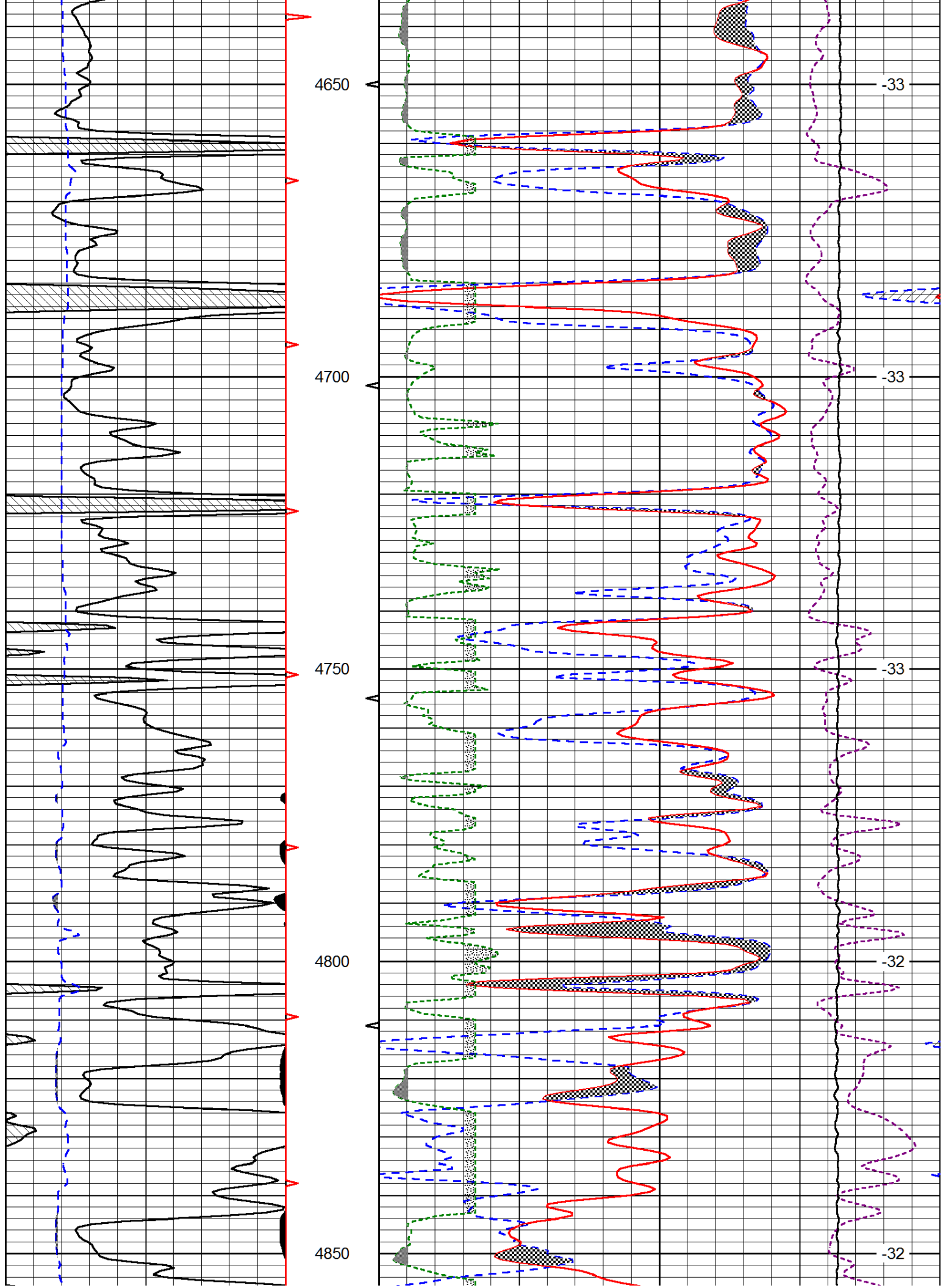


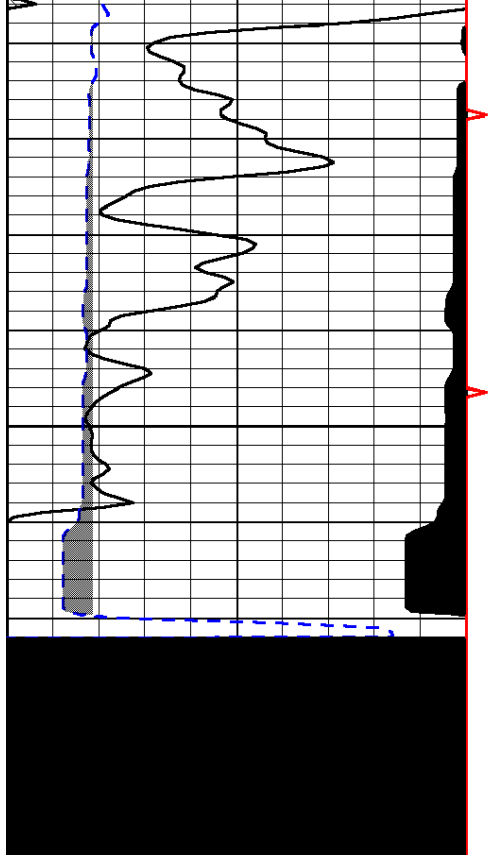




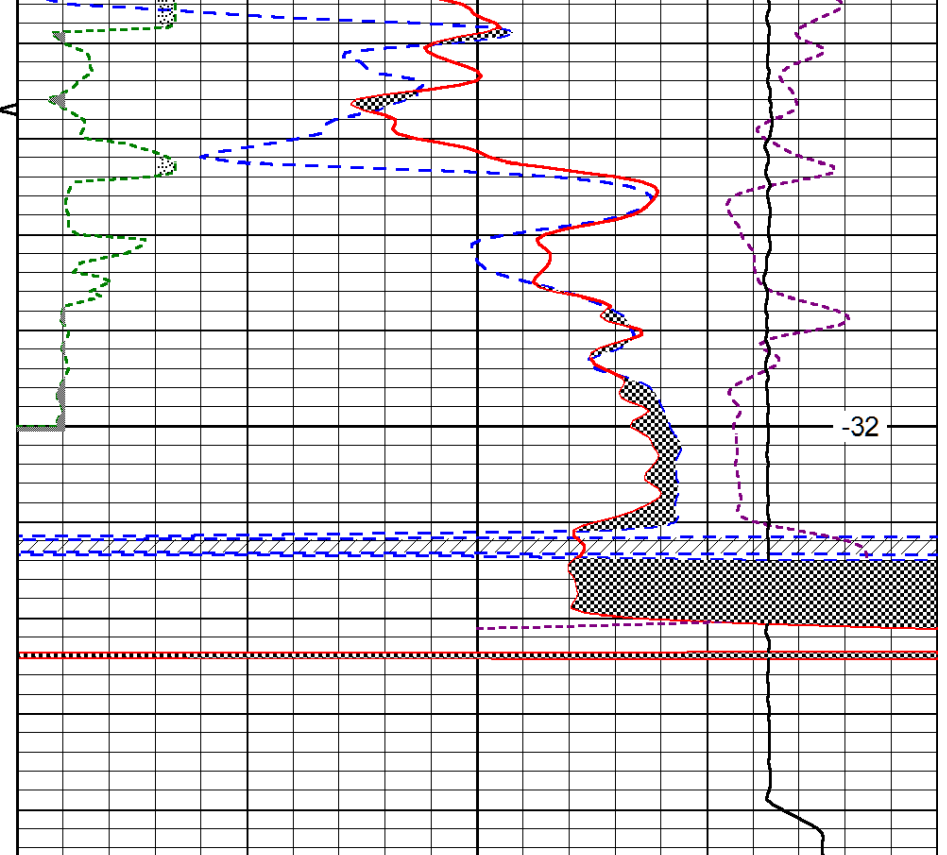








4900



-32

0	Gamma Ray	150
6	Caliper (GAPI)	16

30	CNLS			-10	
30	Compensated Density (2.71 ma)			-10	
2.625	DGA	3.425	-0.25	Correction	0.25
10000	Line Tension			0	

LSPD