



Pioneer Energy Services

Dual Induction Log

15-109-21,357-00-00

API No.

Company **Lario Oil & Gas Company**
 Well **Krebs A #5-34**
 Field **Elkader Townsite**
 County **Logan** State **Kansas**

Location **335' FNL & 1980' FWL**

Other Services
 CNL/CDL
 MEL

Permanent Datum **Ground Level** Elevation **2645**
 Log Measured From **Kelly Bushing** 11 Ft. Above Perm. Datum
 Drilling Measured From **Kelly Bushing**

Elevation
 K.B. 2656
 D.F. 2645
 G.L. 2645

Date	11/28/2014
Run Number	One
Depth Driller	4400
Depth Logger	4404
Bottom Logged Interval	4403
Top Log Interval	200
Casing Driller	8.625 @ 235
Casing Logger	234
Bit Size	7.875
Type Fluid in Hole	Chemical
Salinity, ppm CL	2500
Density / Viscosity	9.2 54
pH / Fluid Loss	9.5 8.0
Source of Sample	Flowline
Rm @ Meas. Temp	0.63 @ 58
Rmf @ Meas. Temp	0.47 @ 58
Rmc @ Meas. Temp	0.85 @ 58
Source of Rmf / Rmc	Charts
Rm @ BHT	0.30 @ 120
Operating Rig Time	4 Hours
Max Rec. Temp. F	120
Equipment Number	15
Location	Hays
Recorded By	D.Kerr
Witnessed By	Steve Davis

<<< Fold Here >>>

All interpretations are opinions based on inferences from electrical or other measurements and we cannot and do not guarantee the accuracy or correctness of any interpretation, and we shall not, except in the case of gross or willful negligence on our part, be liable or responsible for any loss, costs, damages, or expenses incurred or sustained by anyone resulting from any interpretation made by any of our officers, agents or employees. These interpretations are also subject to our general terms and conditions set out in our current Price Schedule.

Comments

Thank you for using Pioneer Energy Services
www.pioneeres.com
 785 625 3858

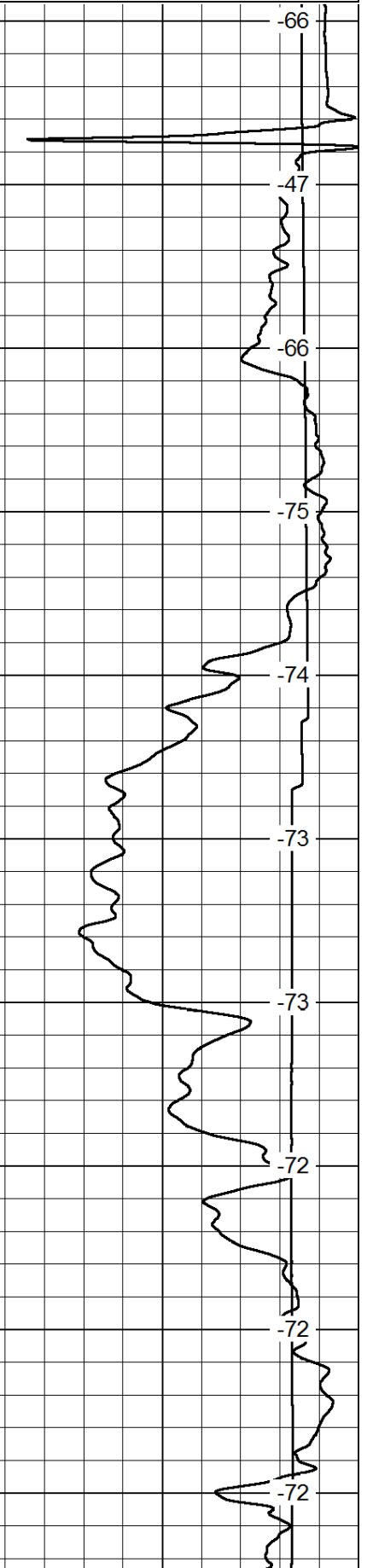
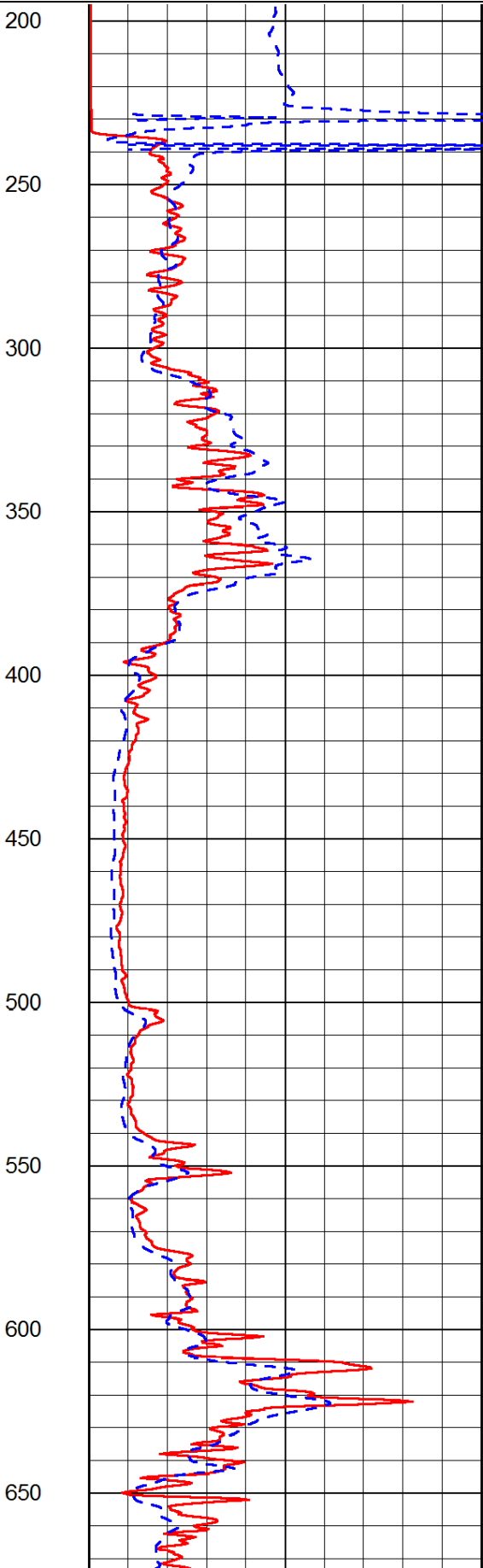
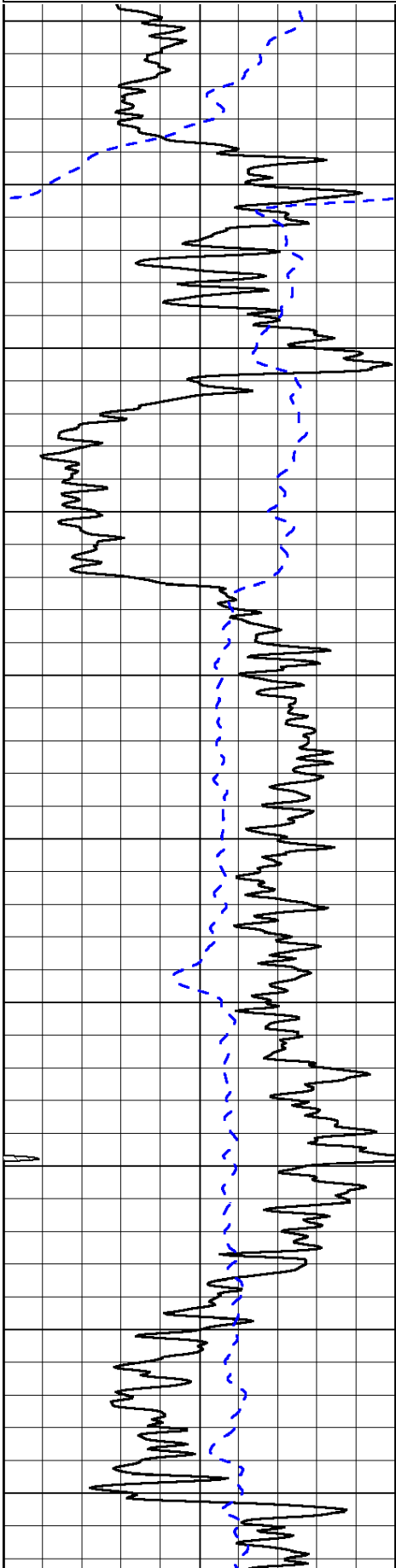
Oakley KS, South to Smoky River, 1/4 South,
 1/2 West and South, North Into

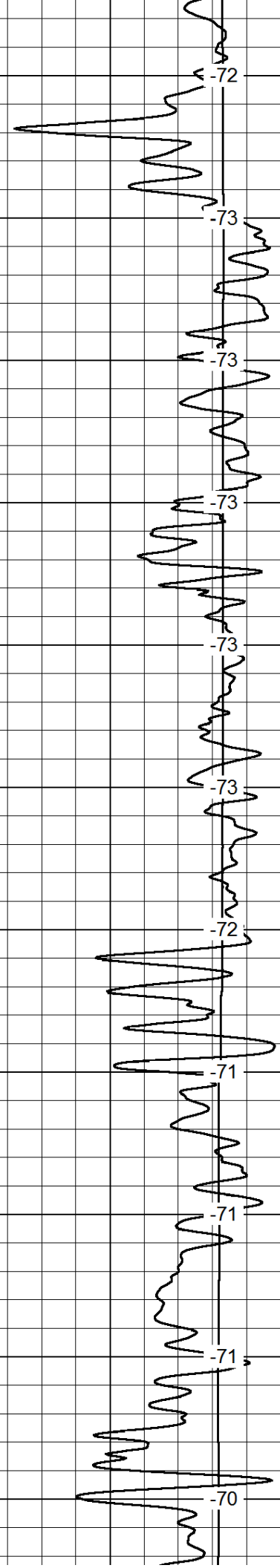
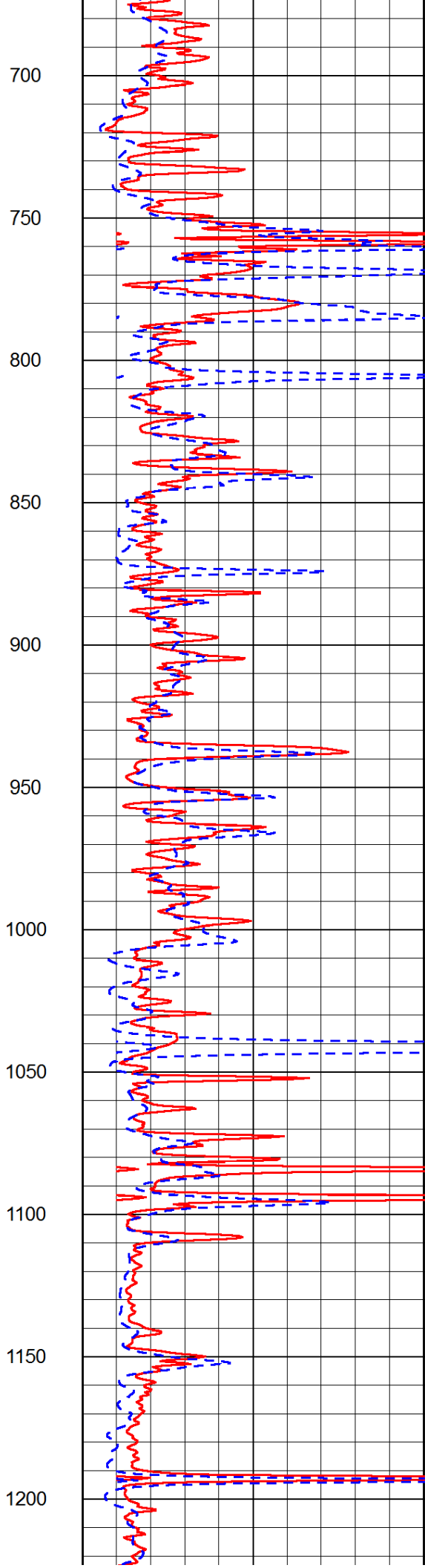
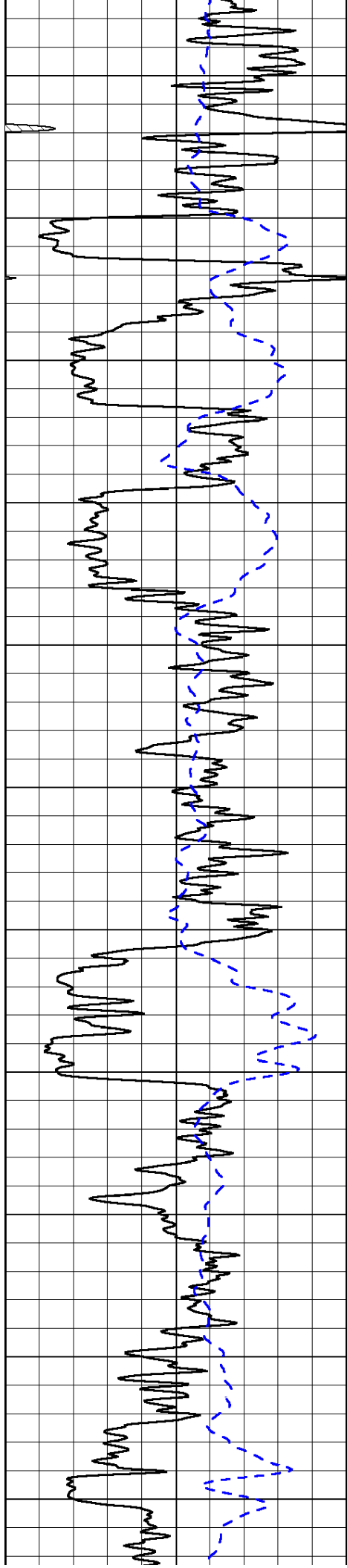
Database File: c:\warrior\data\lario_krebs a #5-34\lario_krebs_a_5_34hd.db
 Dataset Pathname: DIL\lariostk
 Presentation Format: dil2in
 Dataset Creation: Fri Nov 28 09:47:34 2014
 Charted by: Depth in Feet scaled 1:600

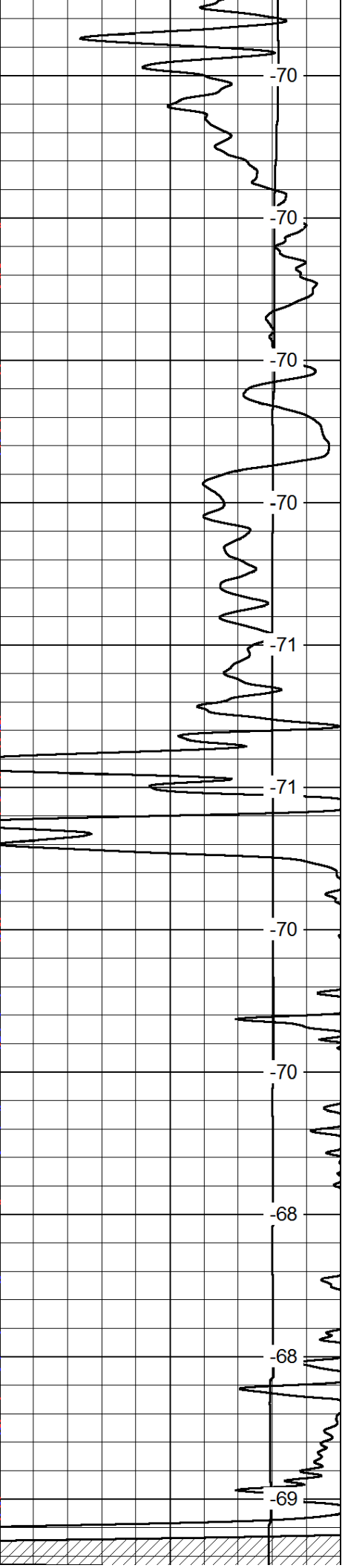
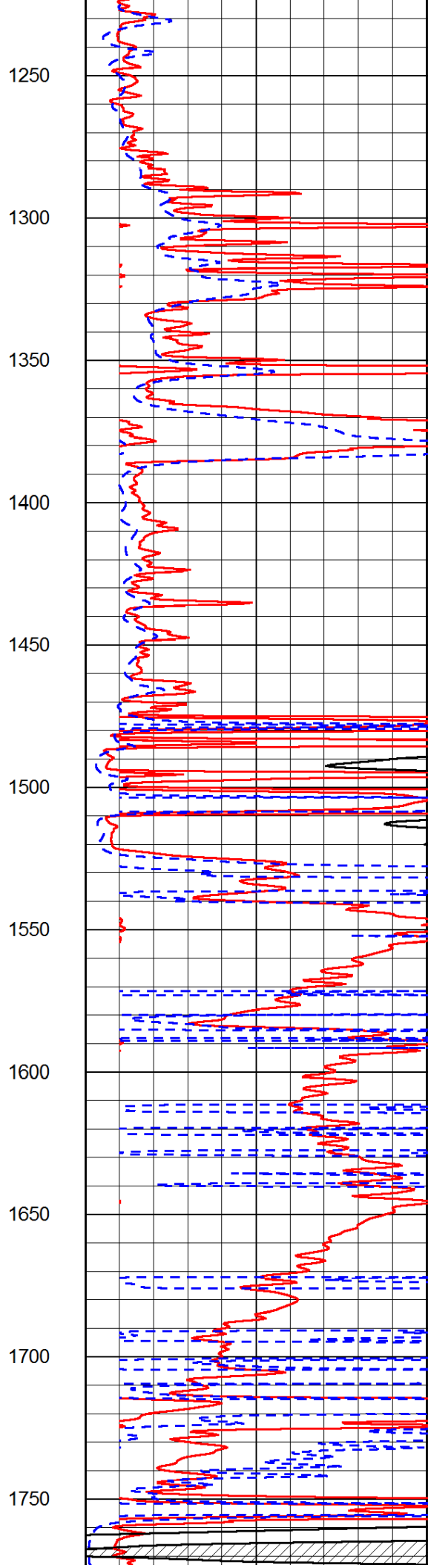
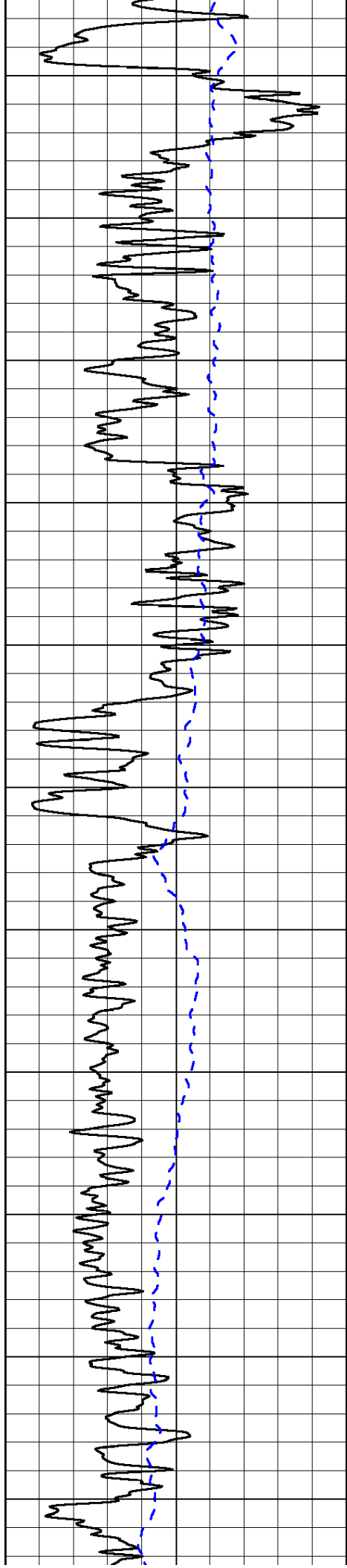
0	Gamma Ray	150
-200	SP (mV)	0

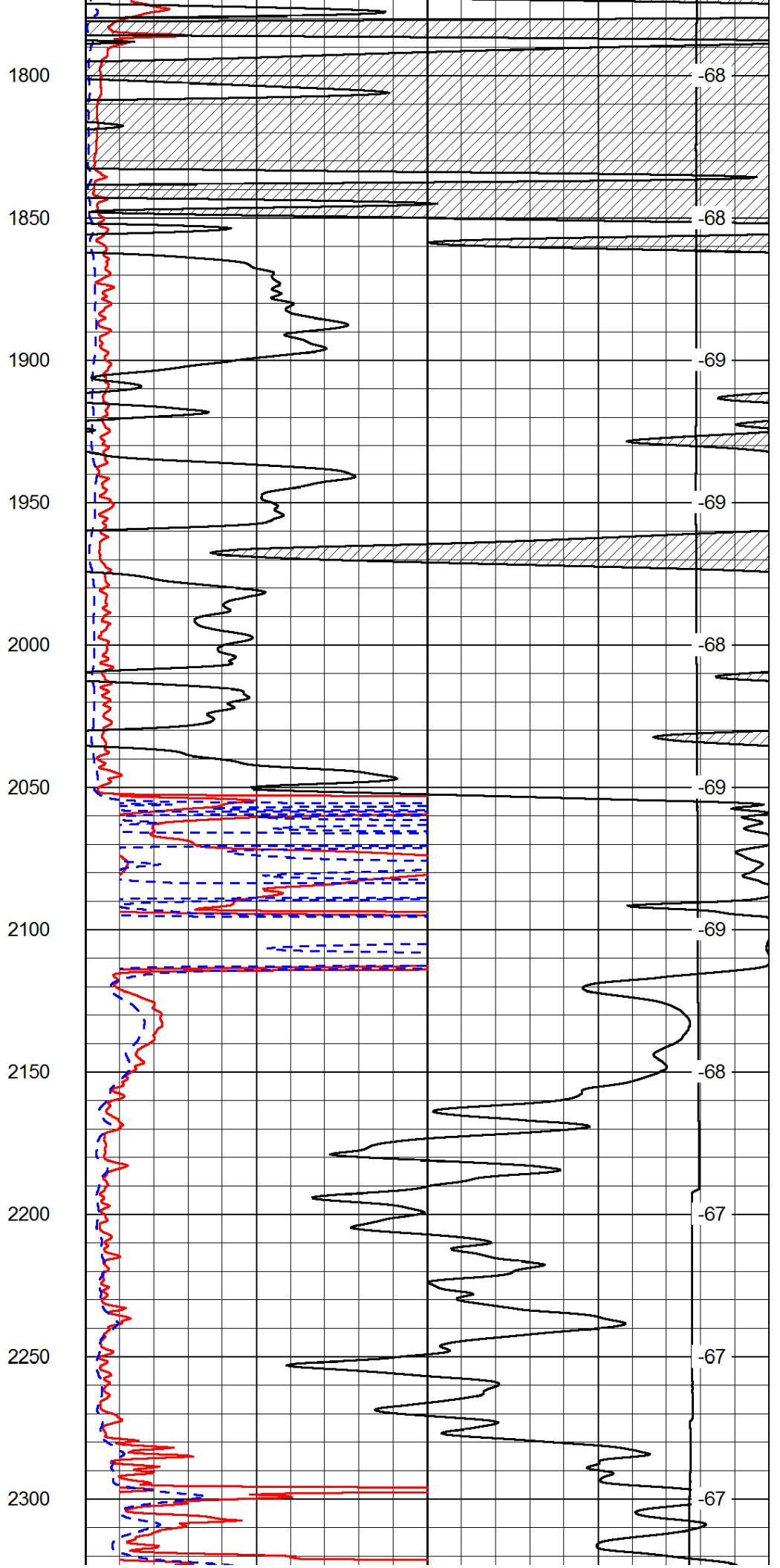
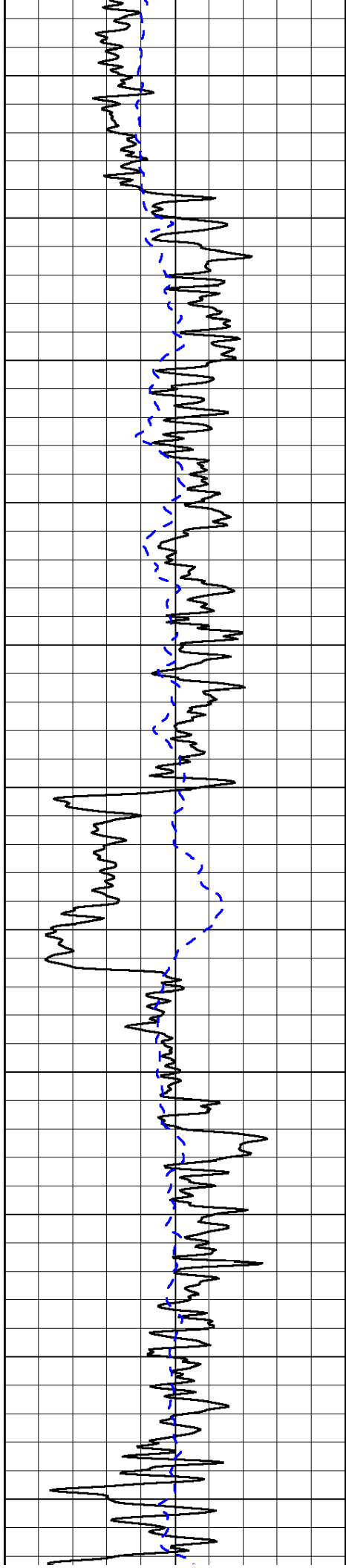
0	Shallow Resistivity	50
0	Deep Resistivity	50
1000	Conductivity	0
15000	Line Tension	0
50	Shallow Resistivity	500
50	Deep Resistivity	500

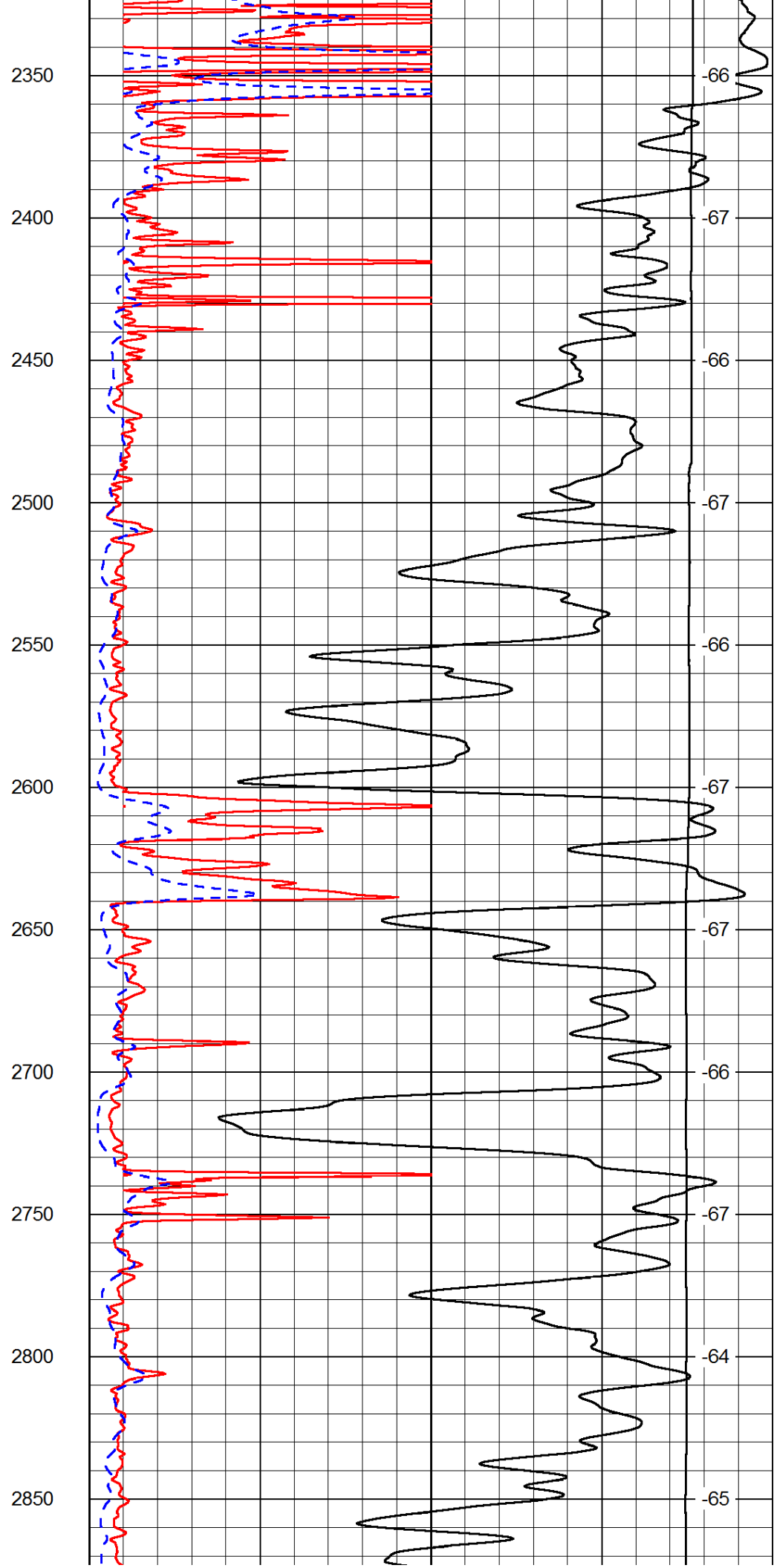
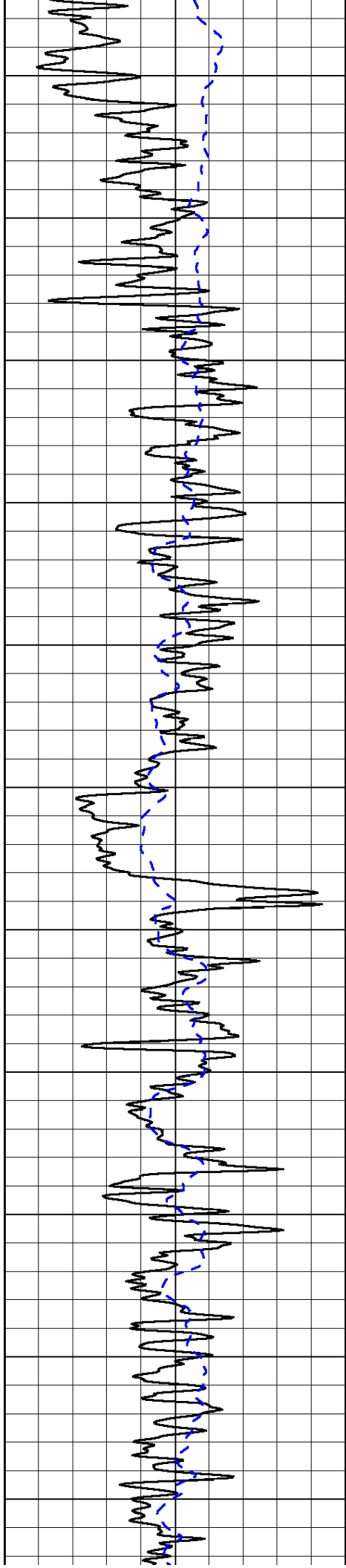
LSPD

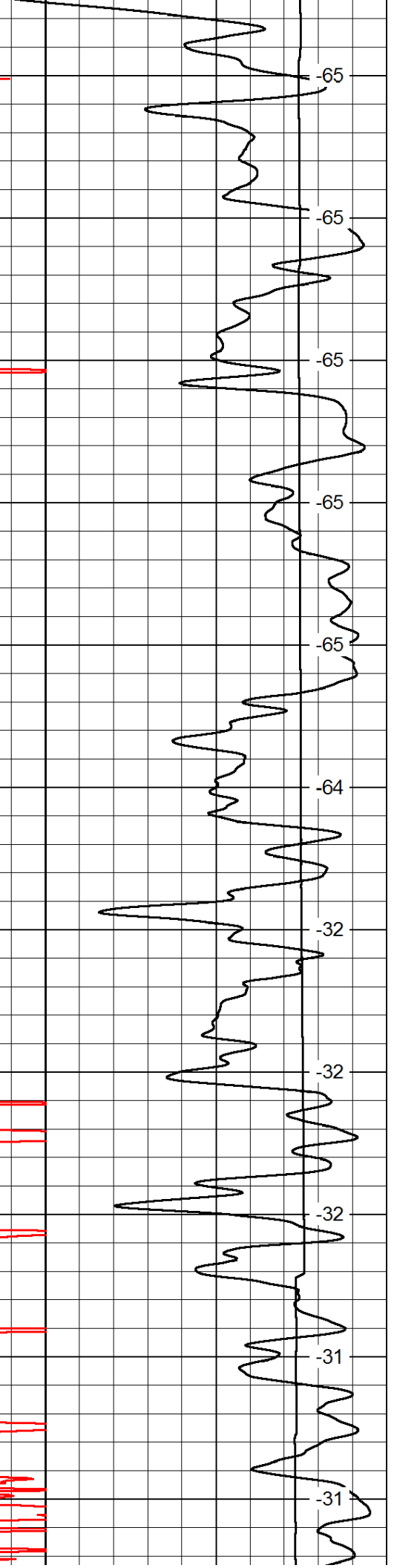
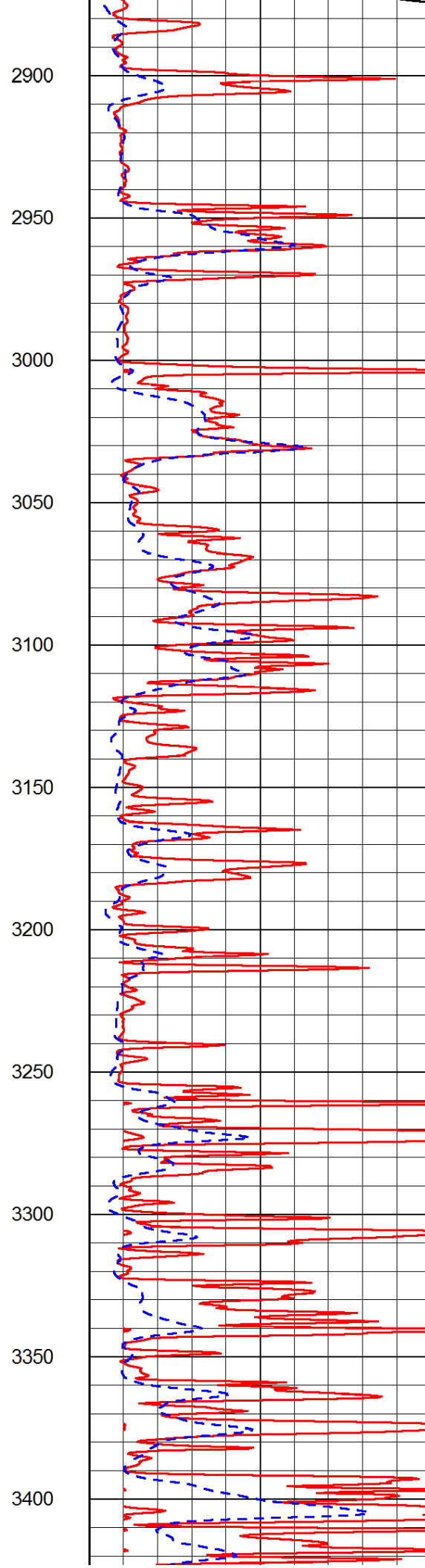
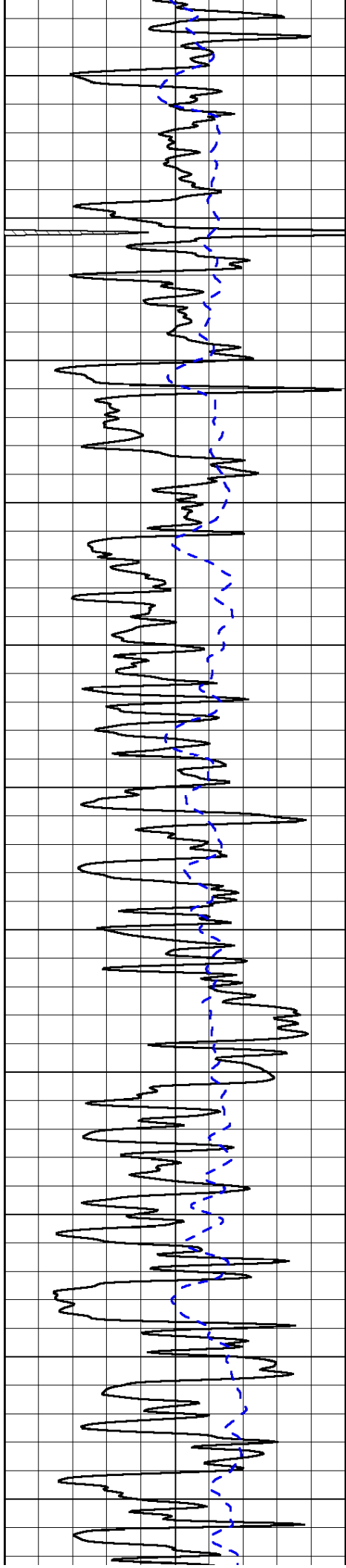


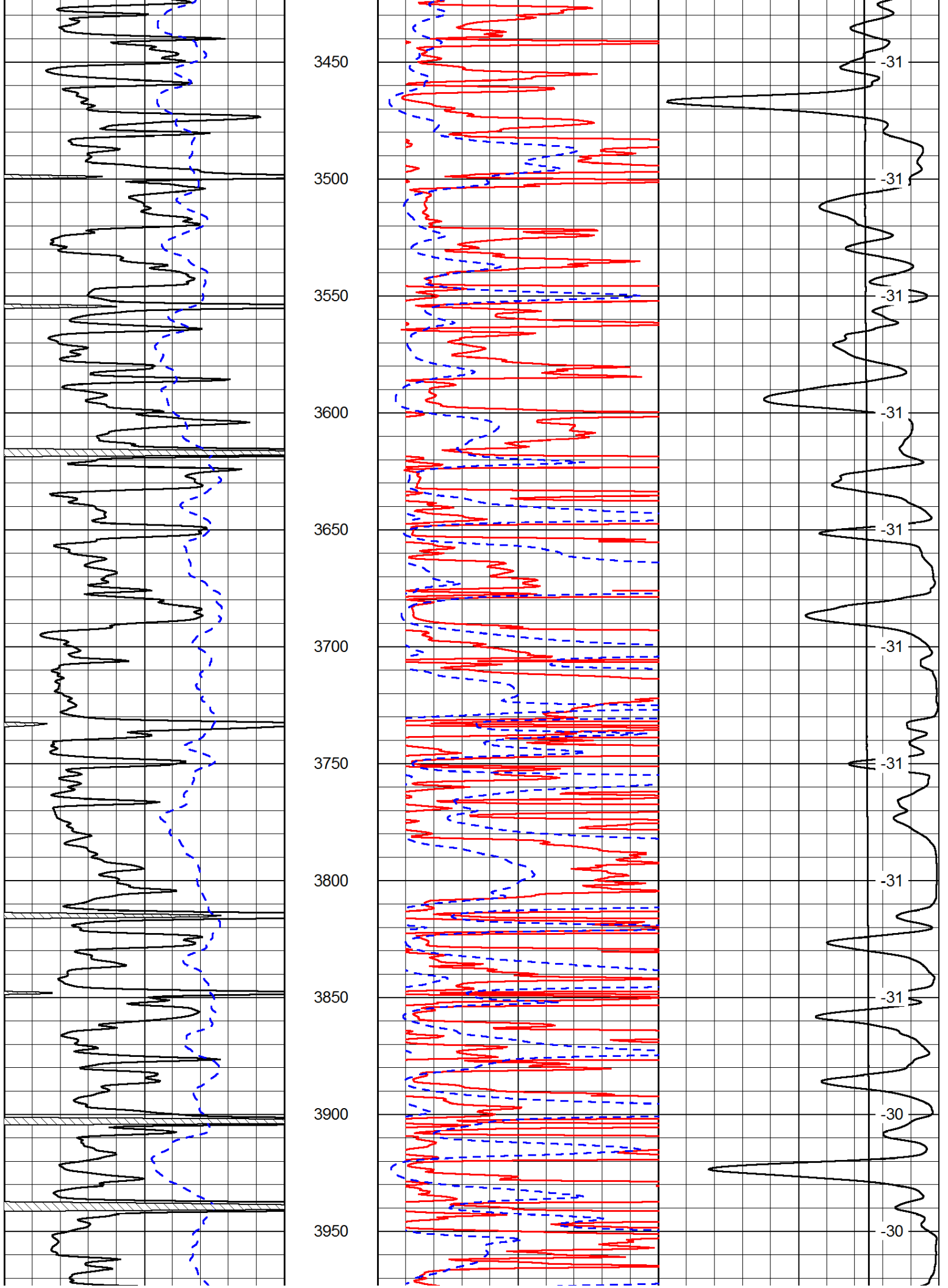


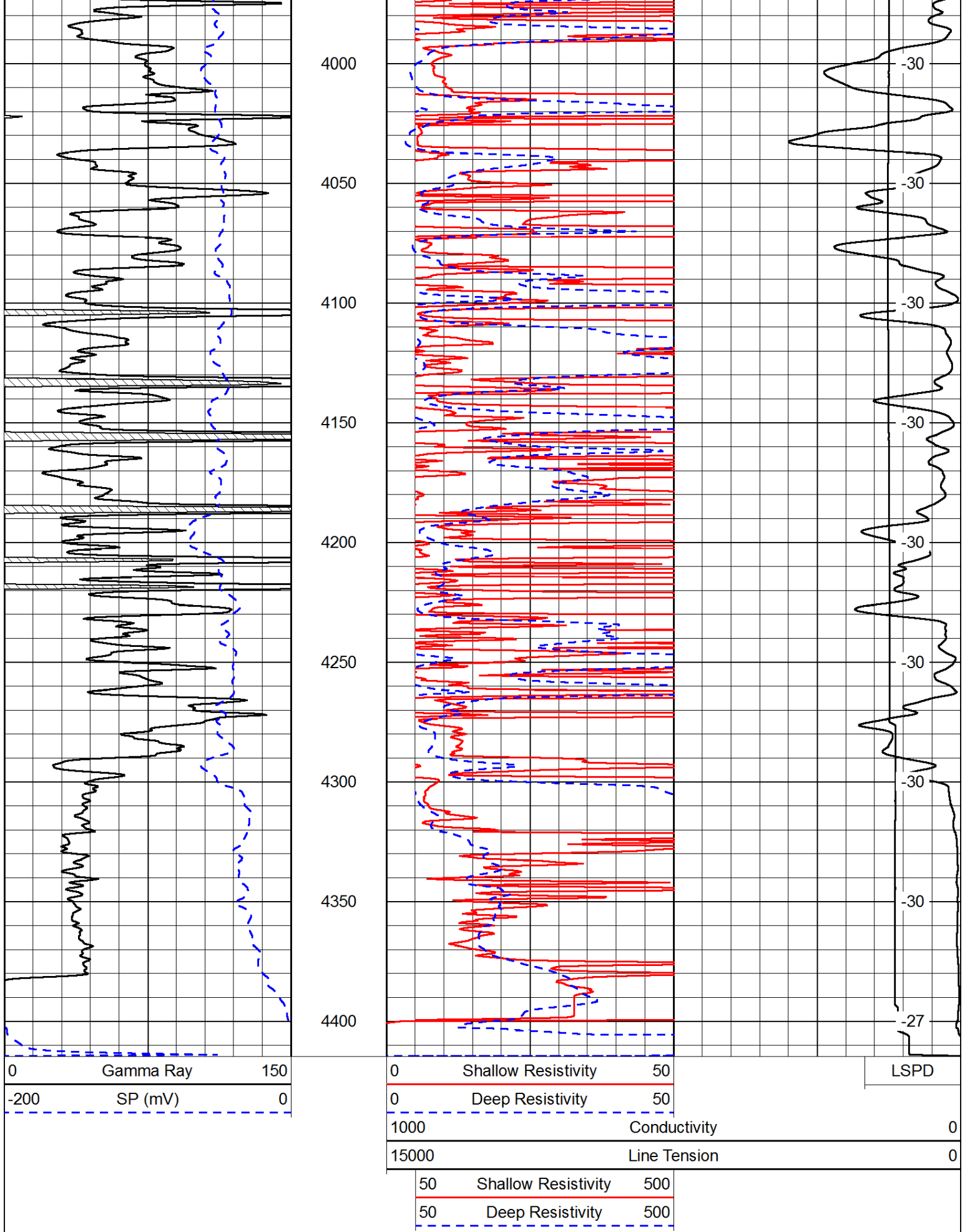










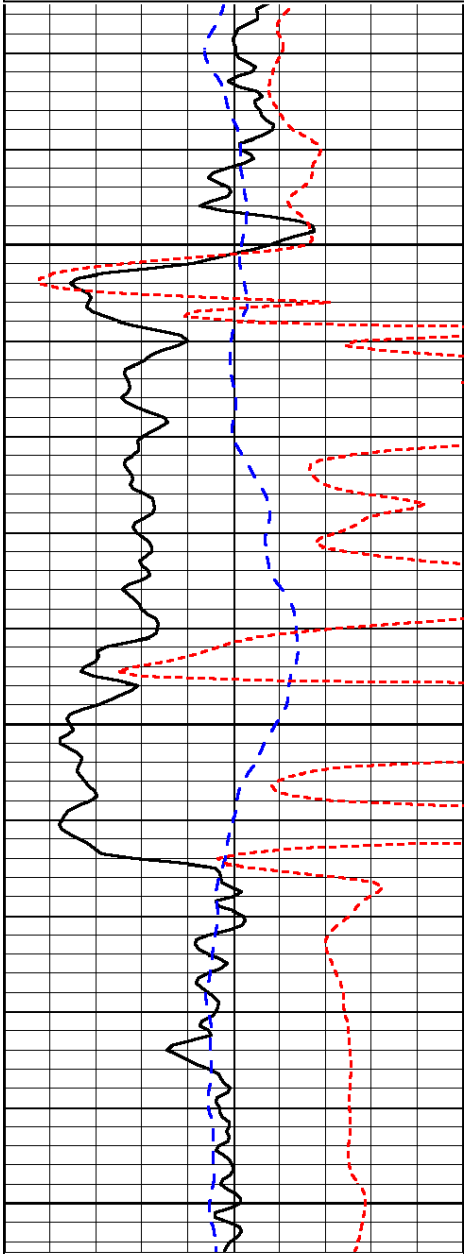


Presentation Format: dil
 Dataset Creation: Fri Nov 28 09:47:34 2014
 Charted by: Depth in Feet scaled 1:240

0	Gamma Ray	150
-200	SP (mV)	0
-160	RxoRt	40

0.2	Deep Resistivity	2000
0.2	Medium Resistivity	2000
0.2	Shallow Resistivity	2000
15000	Line Tension	0

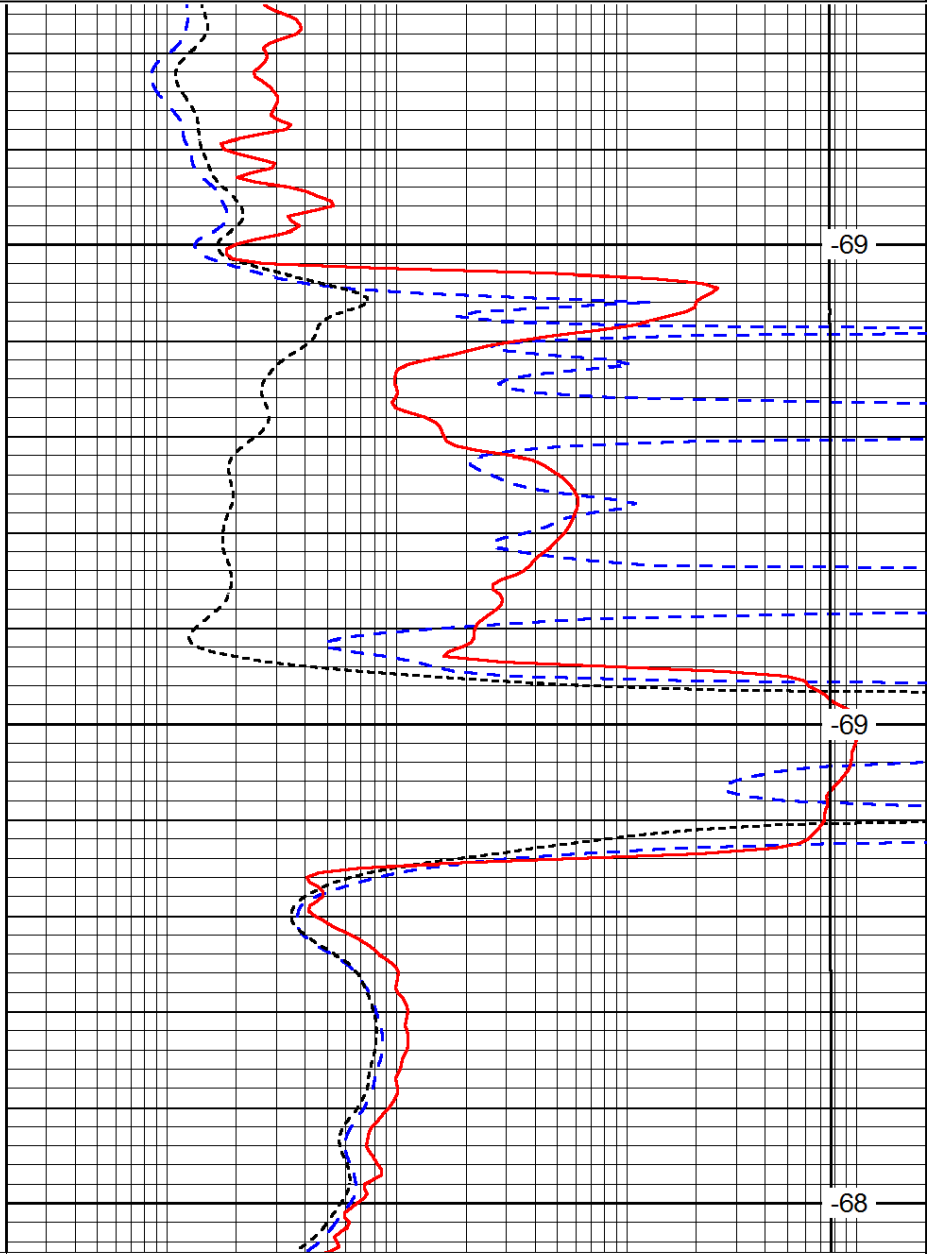
LSPD



2050

2100

2150



-69

-69

-68

0	Gamma Ray	150
-200	SP (mV)	0
-160	RxoRt	40

0.2	Deep Resistivity	2000
0.2	Medium Resistivity	2000
0.2	Shallow Resistivity	2000
15000	Line Tension	0

LSPD

Database File: c:\warrior\data\lario_krebs a #5-34\lario_krebs_a_5_34hd.db
 Dataset Pathname: DIL/lariostk
 Presentation Format: dil
 Dataset Creation: Fri Nov 28 09:47:34 2014
 Charted by: Depth in Feet scaled 1:240

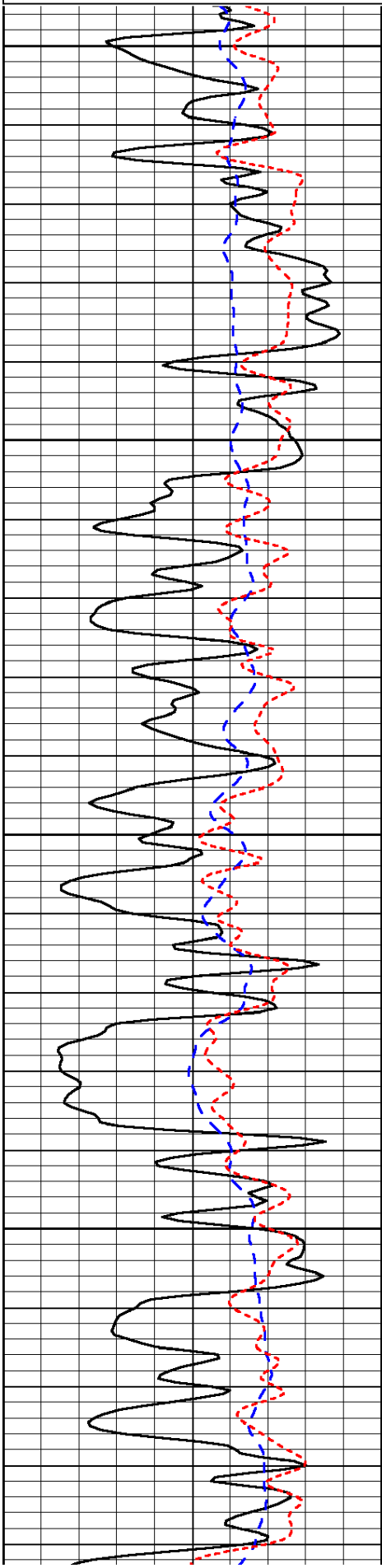
0	Gamma Ray	150
---	-----------	-----

0.2	Deep Resistivity	2000
-----	------------------	------

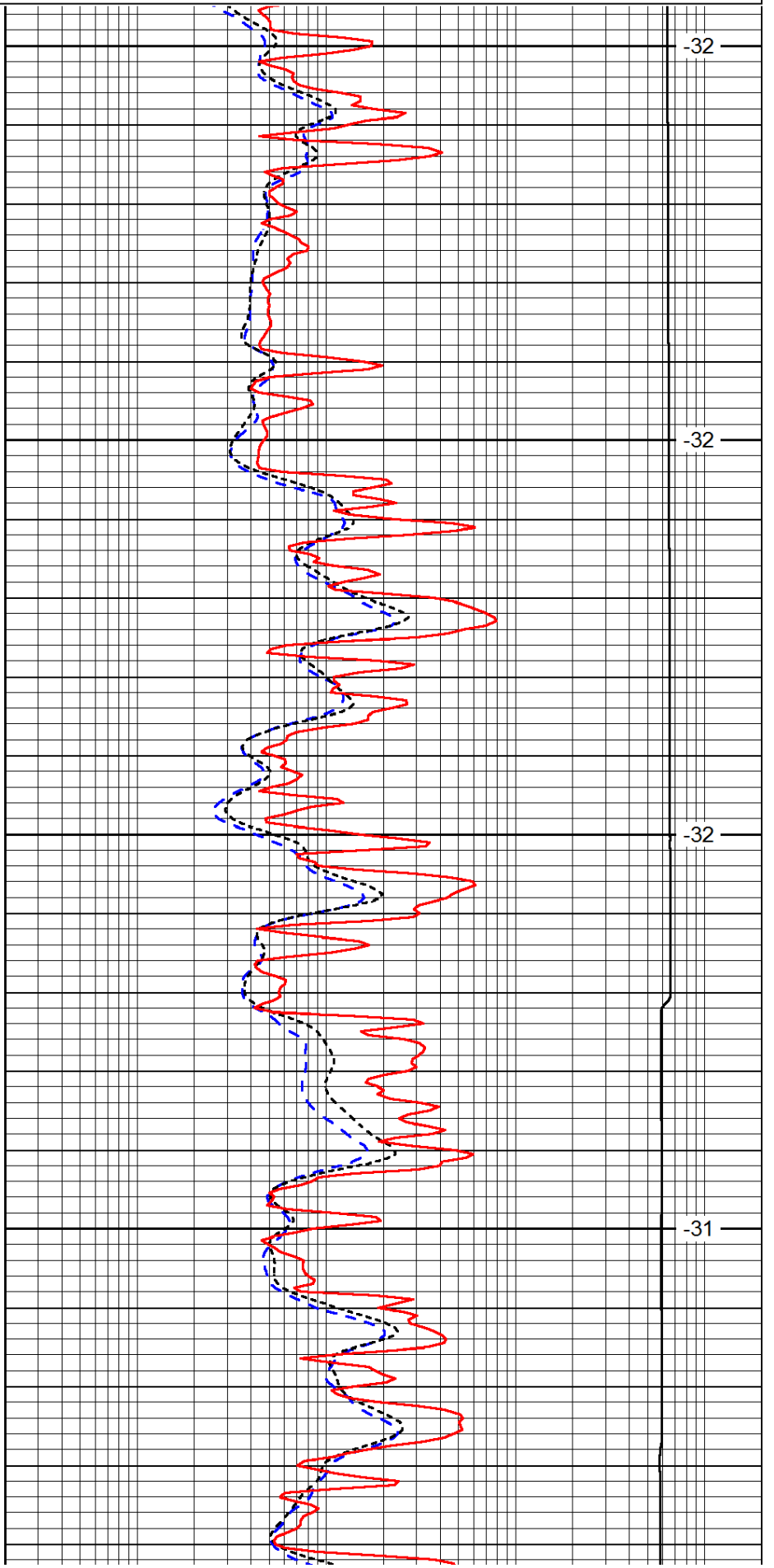
-200	SP (mV)	0
-160	RxoRt	40

0.2	Medium Resistivity	2000
0.2	Shallow Resistivity	2000
15000	Line Tension	0

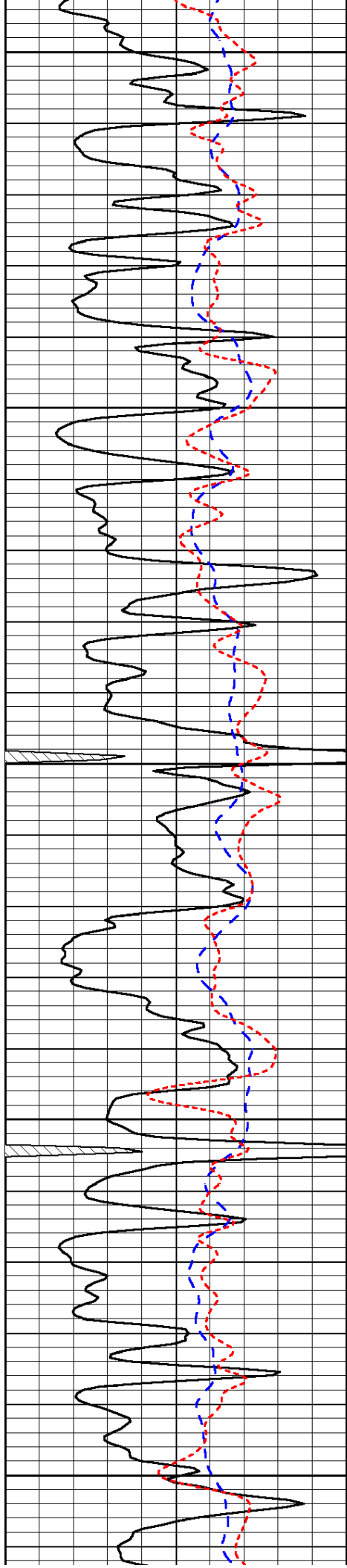
LSPD



3200
3250
3300
3350



-32
-32
-32
-31



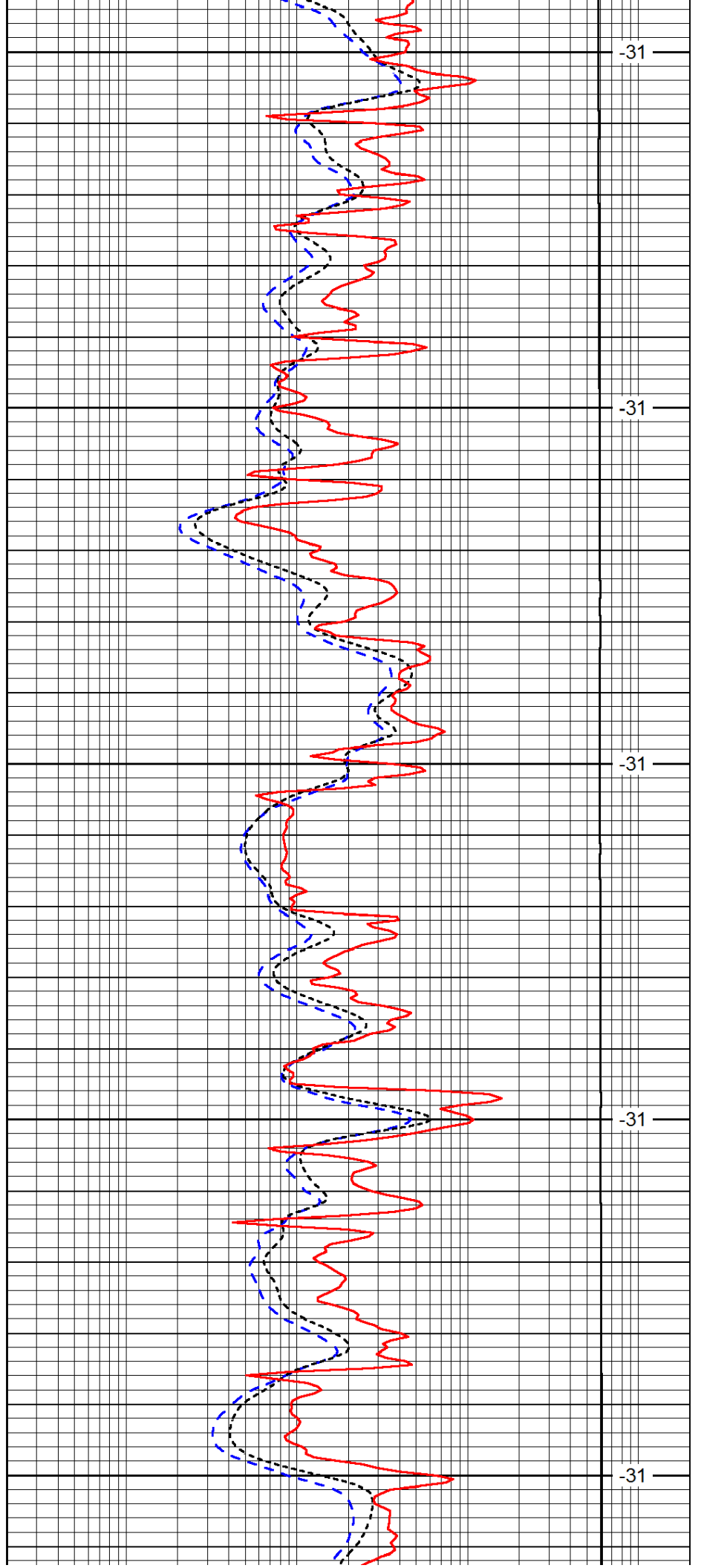
3400

3450

3500

3550

3600



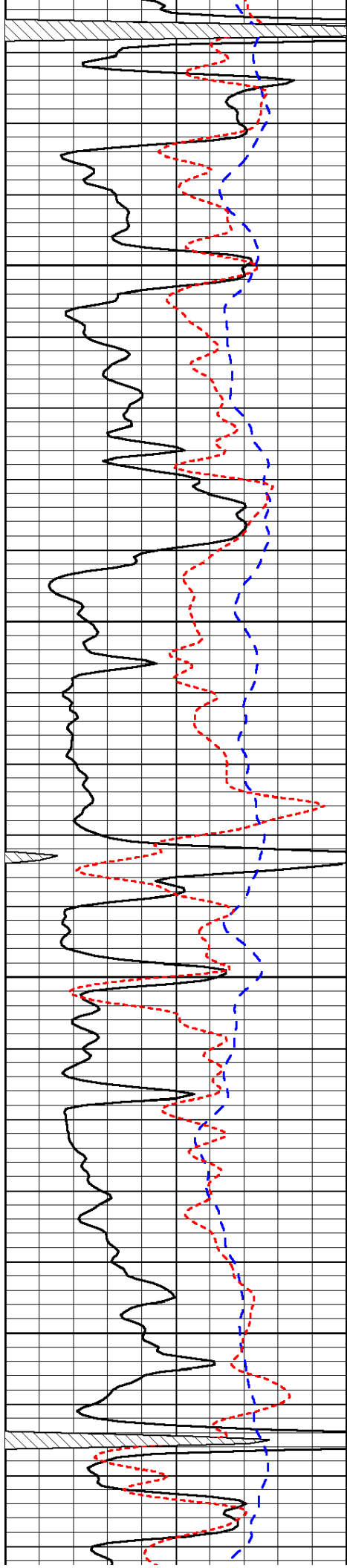
-31

-31

-31

-31

-31

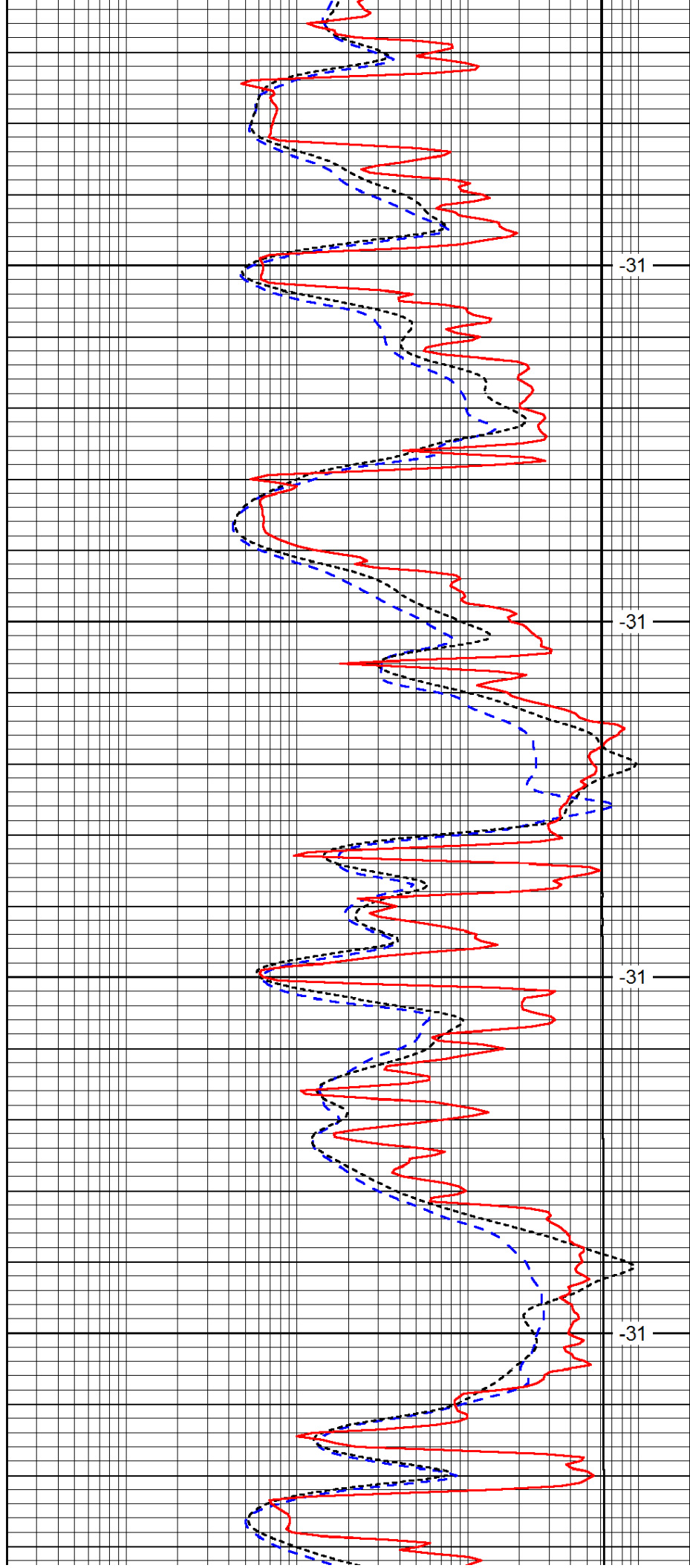


3650

3700

3750

3800

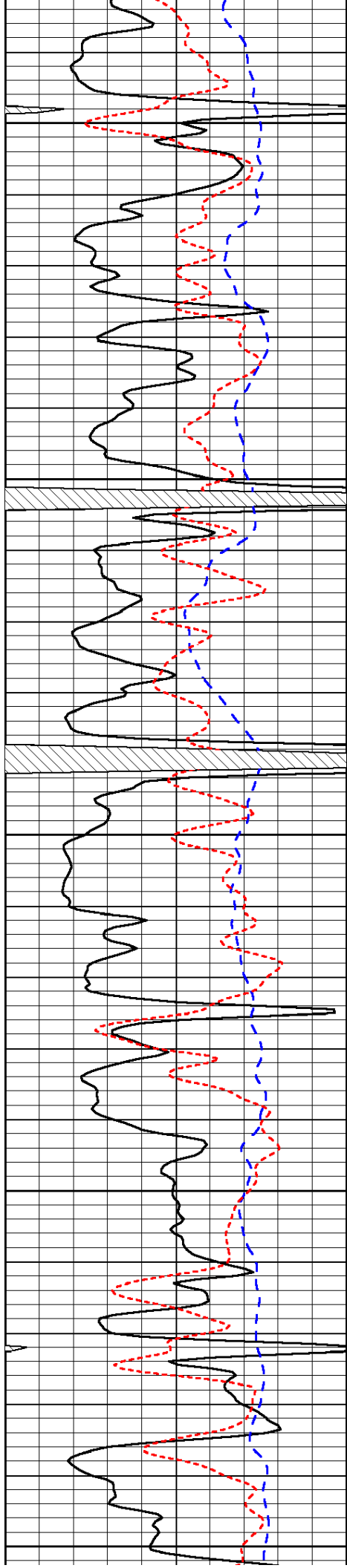


-31

-31

-31

-31



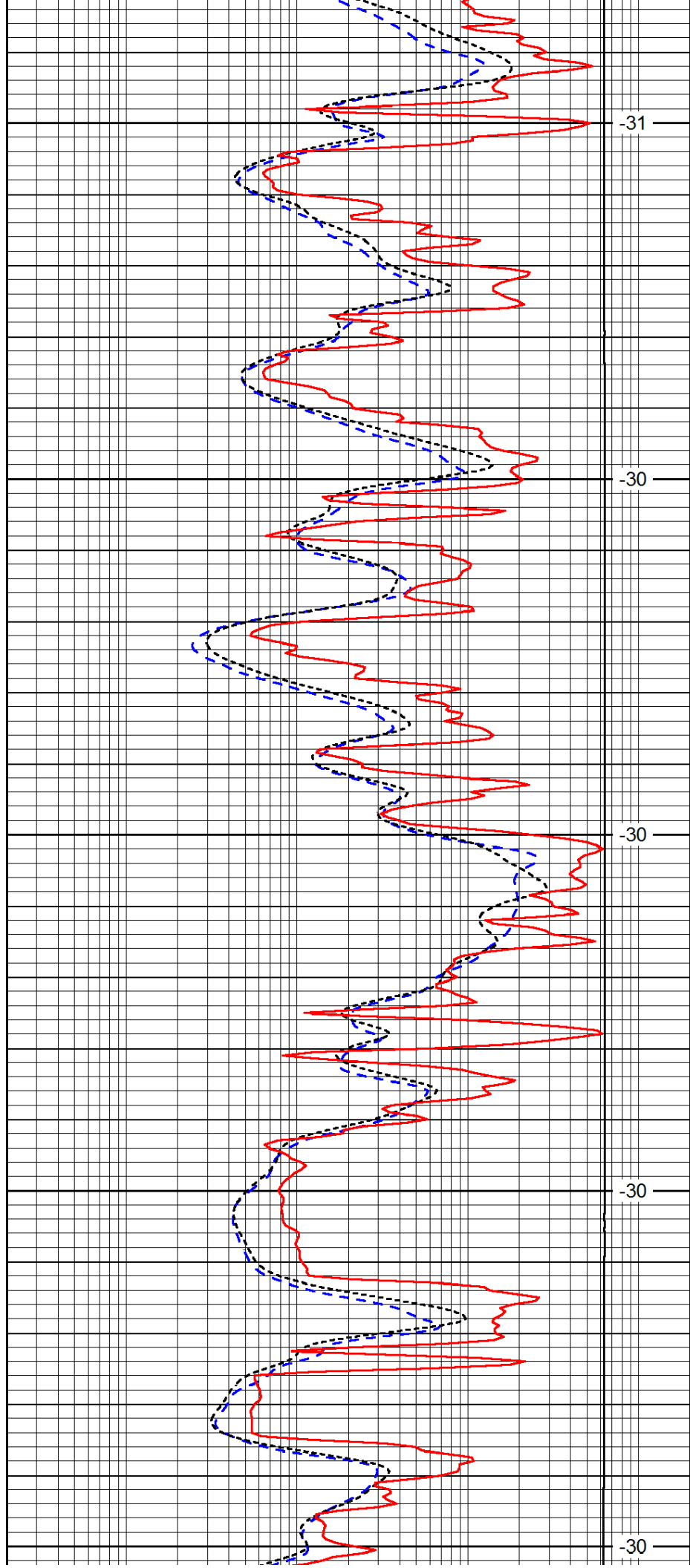
3850

3900

3950

4000

4050



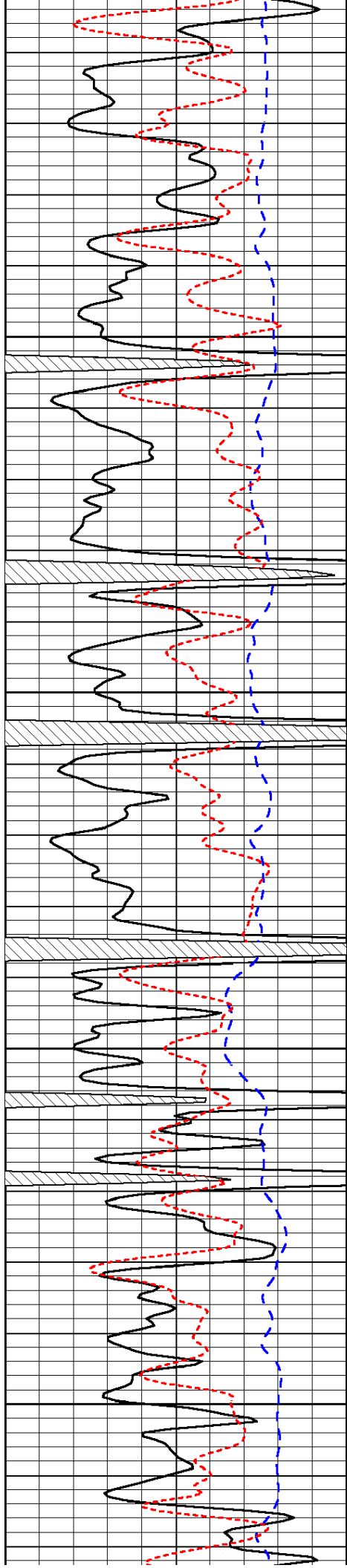
-31

-30

-30

-30

-30

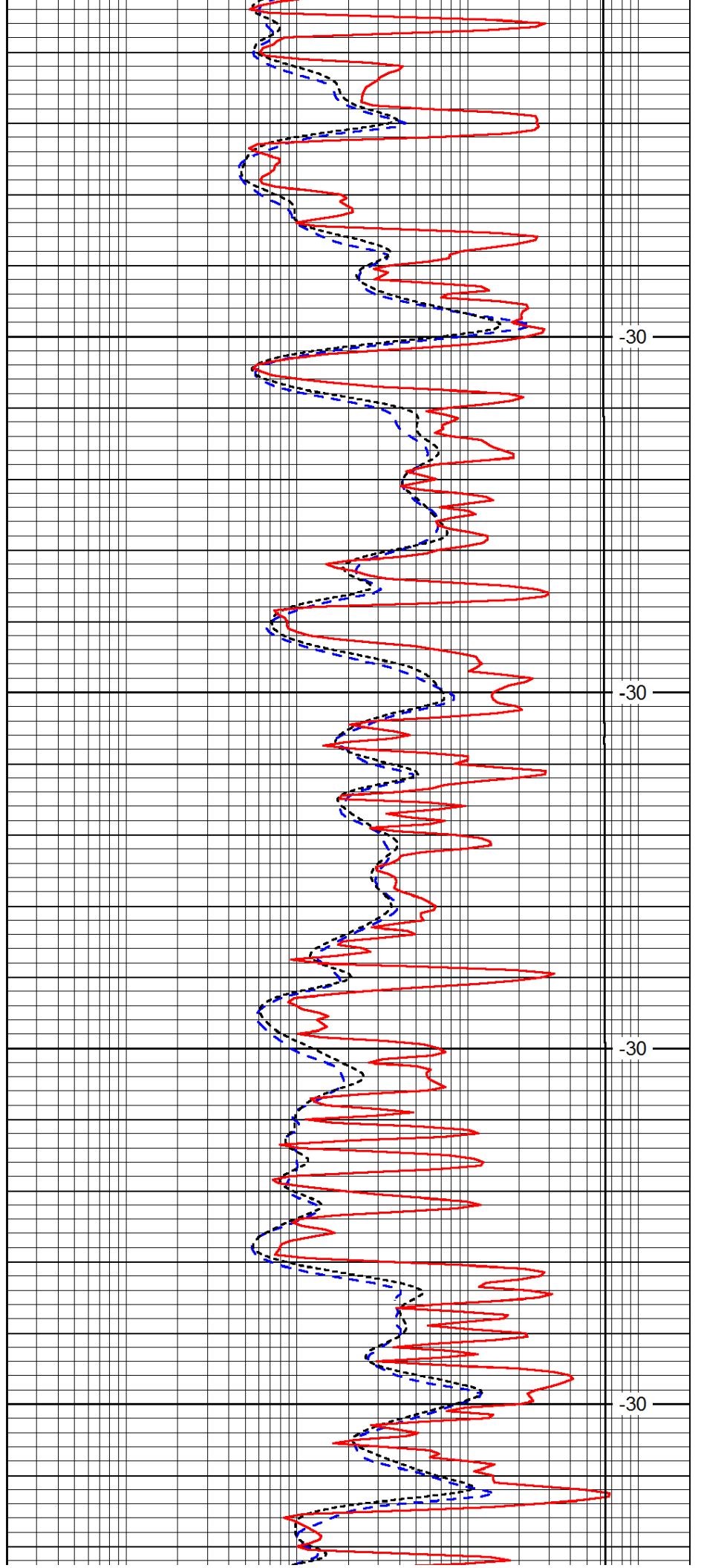


4100

4150

4200

4250

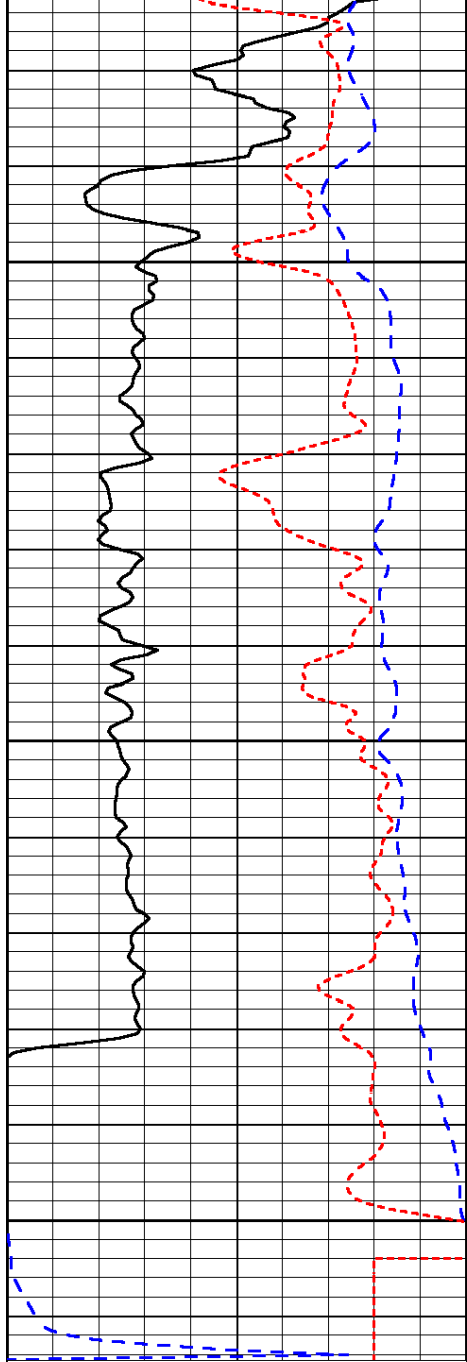


-30

-30

-30

-30

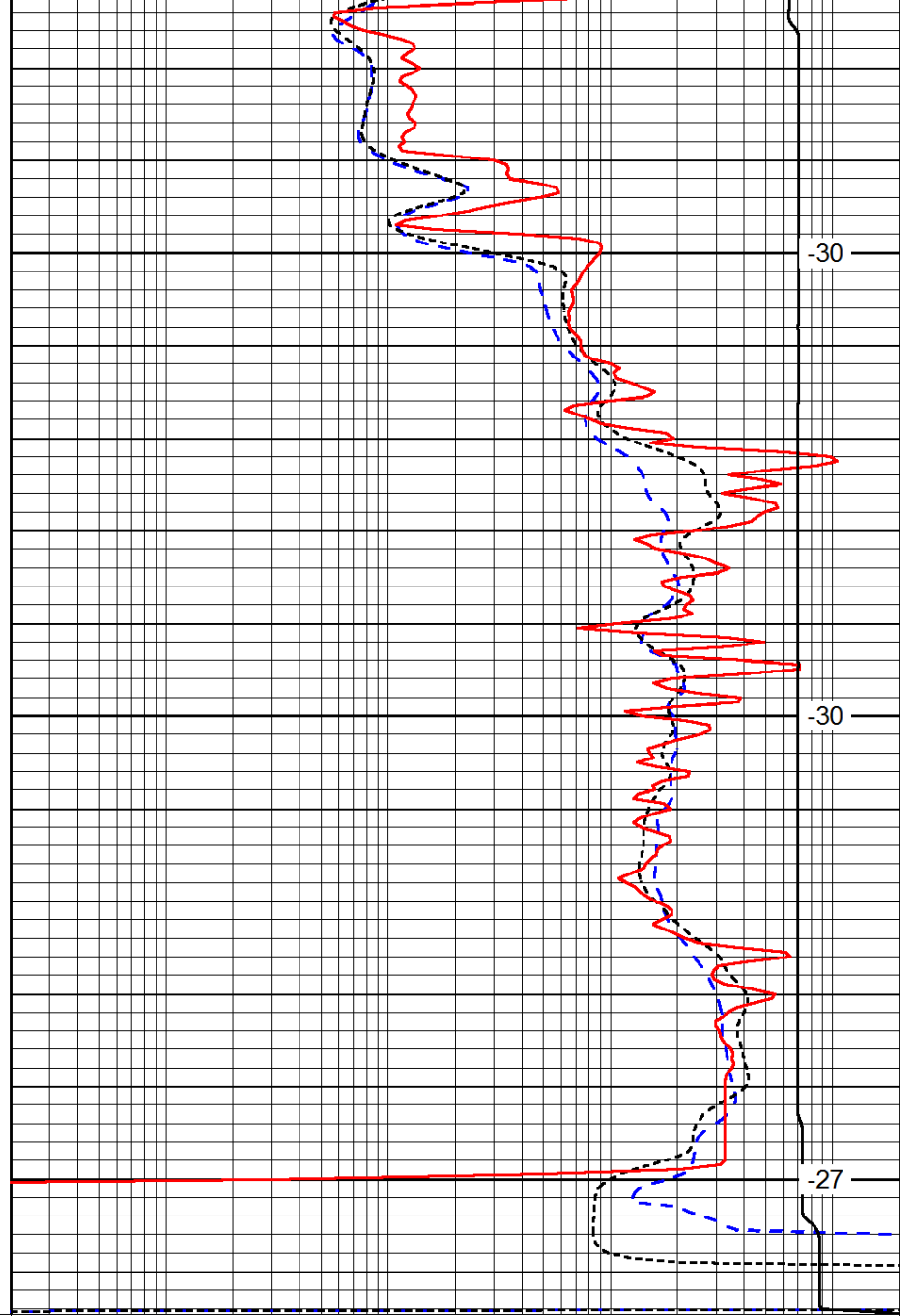


0	Gamma Ray	150
-200	SP (mV)	0
-160	RxoRt	40

4300

4350

4400



-30

-30

-27

0.2	Deep Resistivity	2000
0.2	Medium Resistivity	2000
0.2	Shallow Resistivity	2000
15000	Line Tension	0

LSPD