



Pioneer Energy Services

Microresistivity Log

API No.	15-051-26,753-00-00	
Company	Richland Oil Investments, LLC	
Well	Schonthaler No. 5	
Field	Lucky Lady	
County	Ellis	State
		Kansas
Location	895' FNL & 665' FWL (Approx. NW/SE NW/NW)	
Sec: 30	Twp: 11S	Rge: 19W
Permanent Datum	Ground Level	Elevation 2100
Log Measured From	Kelly Bushing	7 Ft. Above Perm. Datum
Drilling Measured From	Kelly Bushing	
		Other Services CNL/CDL DIL
		Elevation K.B. 2107 D.F. 2100 G.L. 2100

Date	11/24/2014
Run Number	Two
Depth Driller	3770
Depth Logger	3767
Bottom Logged Interval	3766
Top Log Interval	3000
Casing Driller	8.625 @ 255
Casing Logger	262
Bit Size	7.875
Type Fluid in Hole	Chemical
Salinity, ppm CL	3500
Density / Viscosity	9.4 53
pH / Fluid Loss	10.5 8.0
Source of Sample	Flowline
Rm @ Meas. Temp	.60 @ 68
Rmf @ Meas. Temp	.45 @ 68
Rmc @ Meas. Temp	.81 @ 68
Source of Rmf / Rmc	Charts
Rm @ BHT	.36 @ 114
Operating Rig Time	4 Hours
Max Rec. Temp. F	114
Equipment Number	108
Location	Hays
Recorded By	J. Long
Witnessed By	Anthony Luna

<<< Fold Here >>>

All interpretations are opinions based on inferences from electrical or other measurements and we cannot and do not guarantee the accuracy or correctness of any interpretation, and we shall not, except in the case of gross or willful negligence on our part, be liable or responsible for any loss, costs, damages, or expenses incurred or sustained by anyone resulting from any interpretation made by any of our officers, agents or employees. These interpretations are also subject to our general terms and conditions set out in our current Price Schedule.

Comments

Thank you for using Log-Tech, Inc.
(785) 625-3858

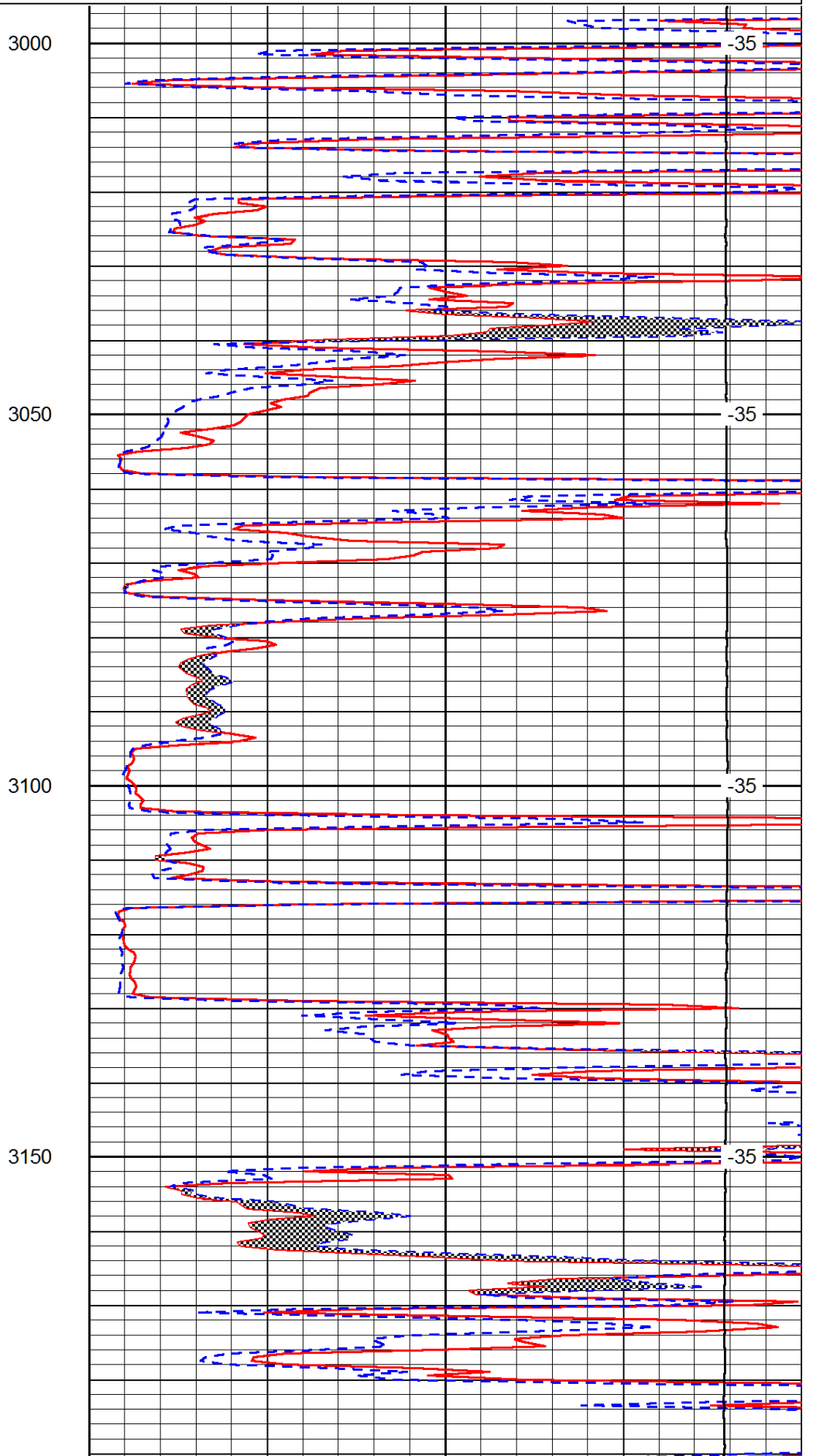
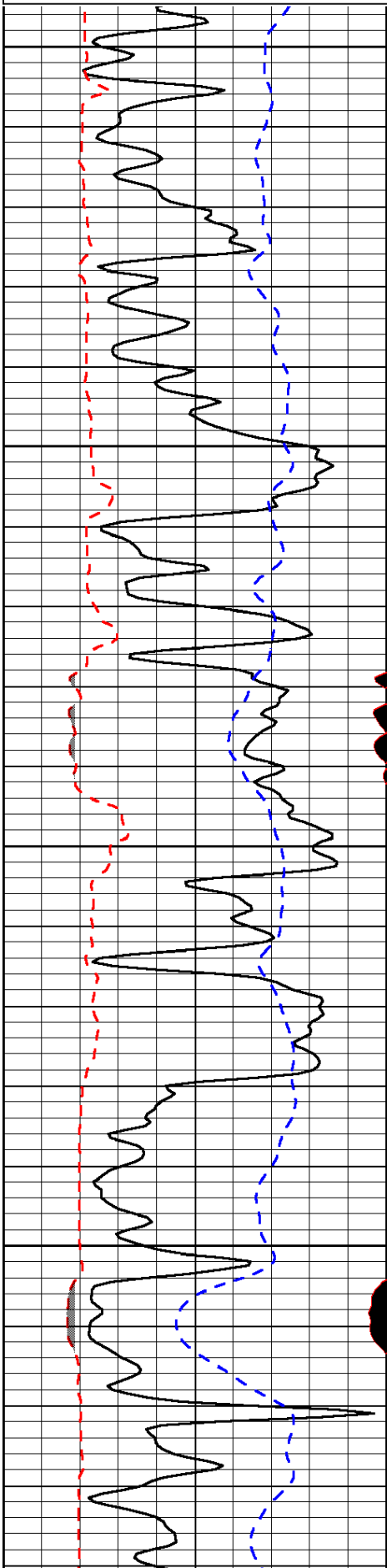
I-70 & Yocemento Exit, 2 1/2 North to Emmeram Road, 2 West to 170th Avenue, 7 1/2 North, 1/2 West, North Into at Tank Batteries

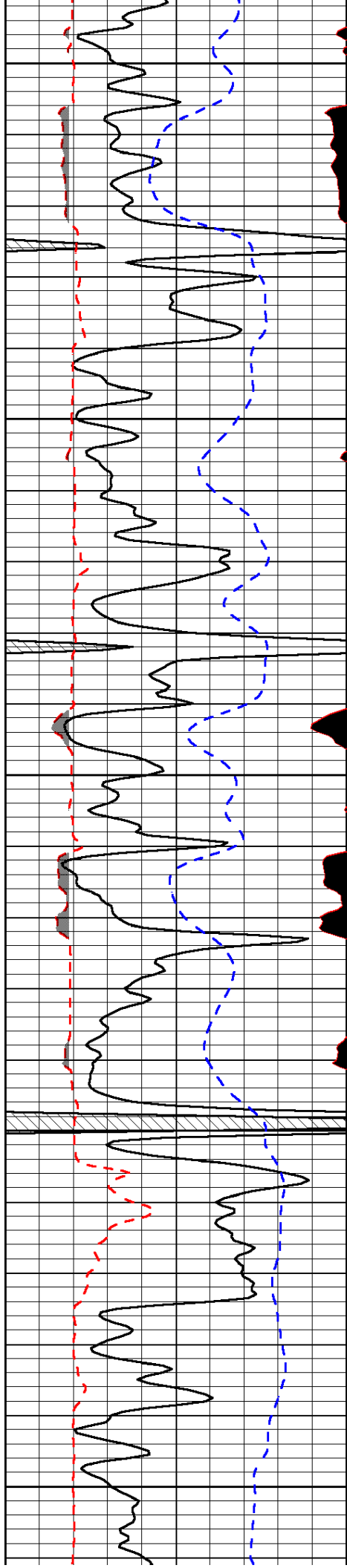
Database File: richland_oil_schonthaler_5hd.db
 Dataset Pathname: dil/richstck
 Presentation Format: micro
 Dataset Creation: Mon Nov 24 03:00:59 2014
 Charted by: Depth in Feet scaled 1:240

0	Gamma Ray	150
6	MCAL (GAPI)	16
2.875	Mud Cake (GAPI)	7.875
-200	SP (mV)	0

0	Micro Inverse 1 X 1	40
0	Micro Normal 2"	40
10000	Line Weight	0

LSPD





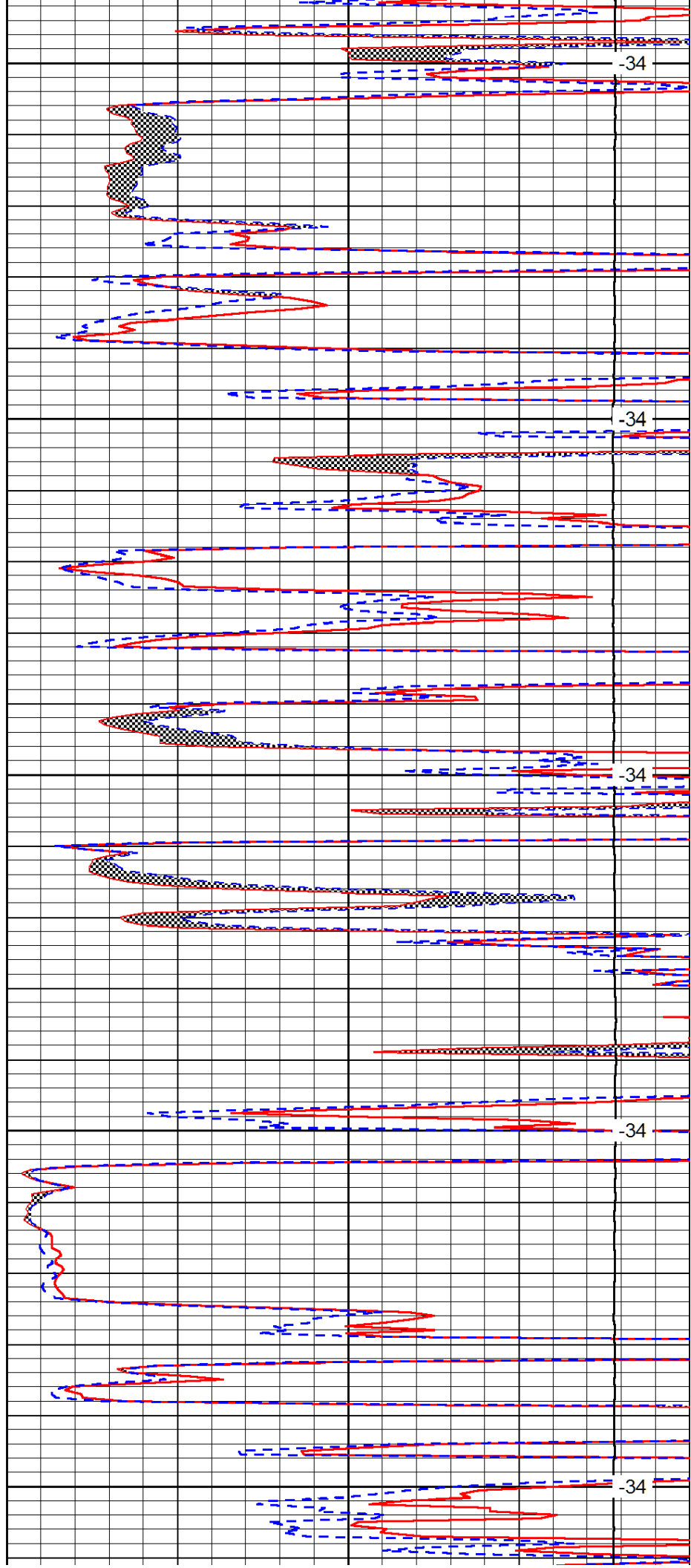
3200

3250

3300

3350

3400



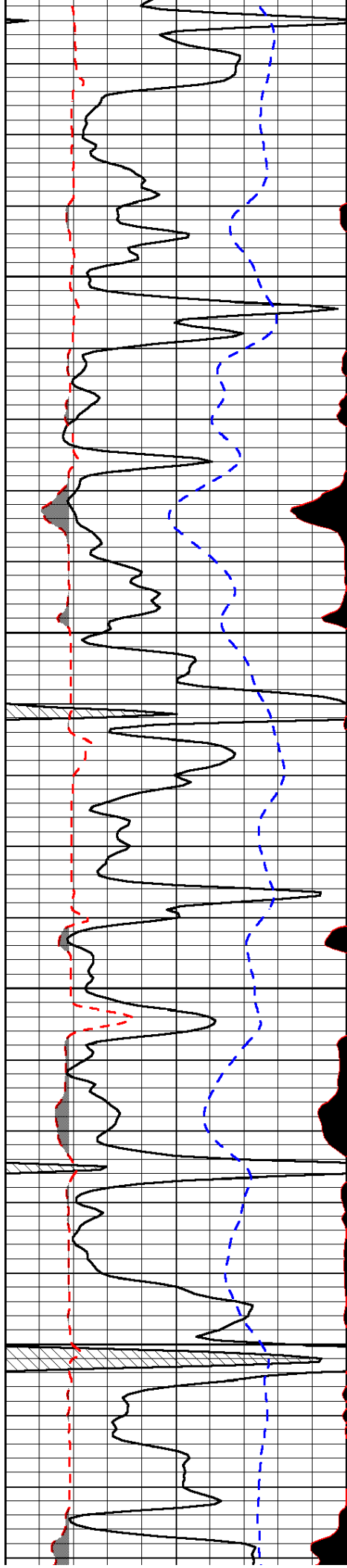
-34

-34

-34

-34

-34

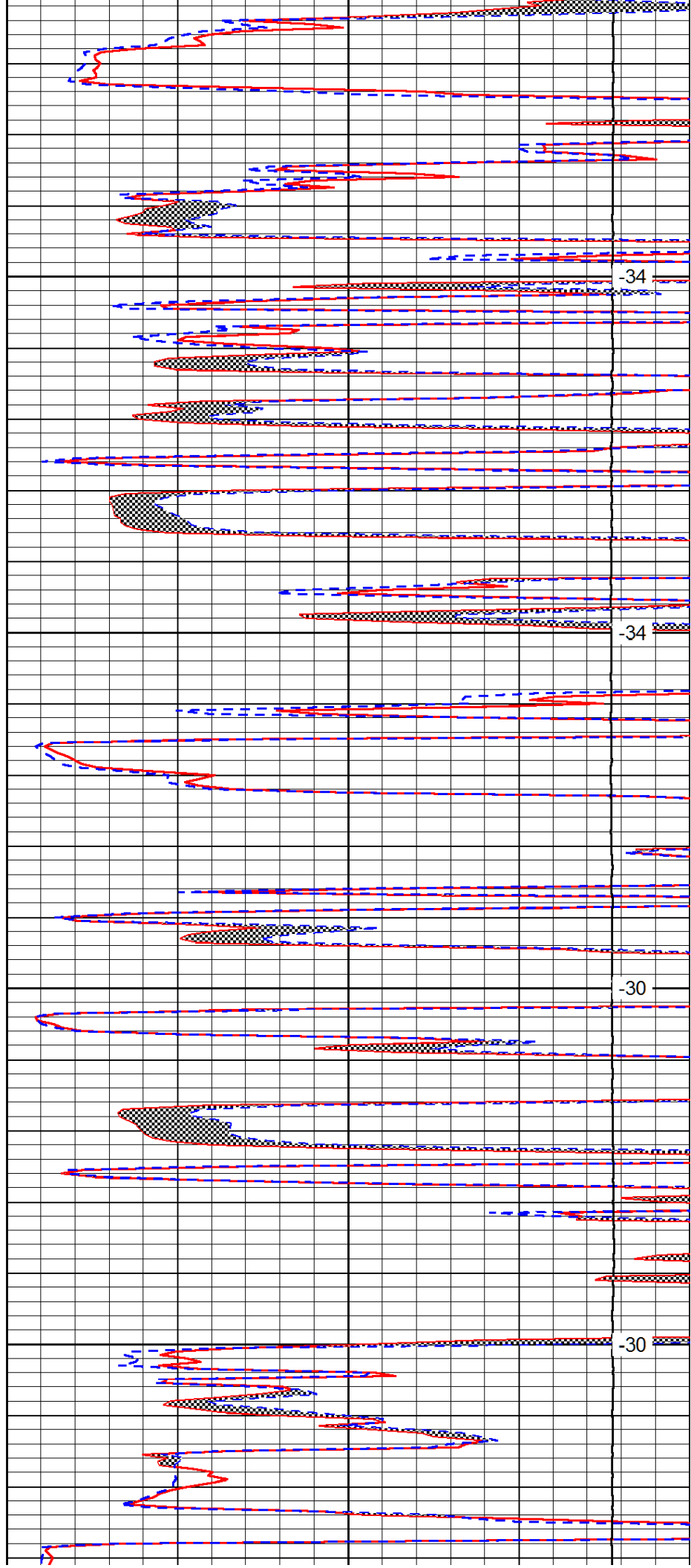


3450

3500

3550

3600

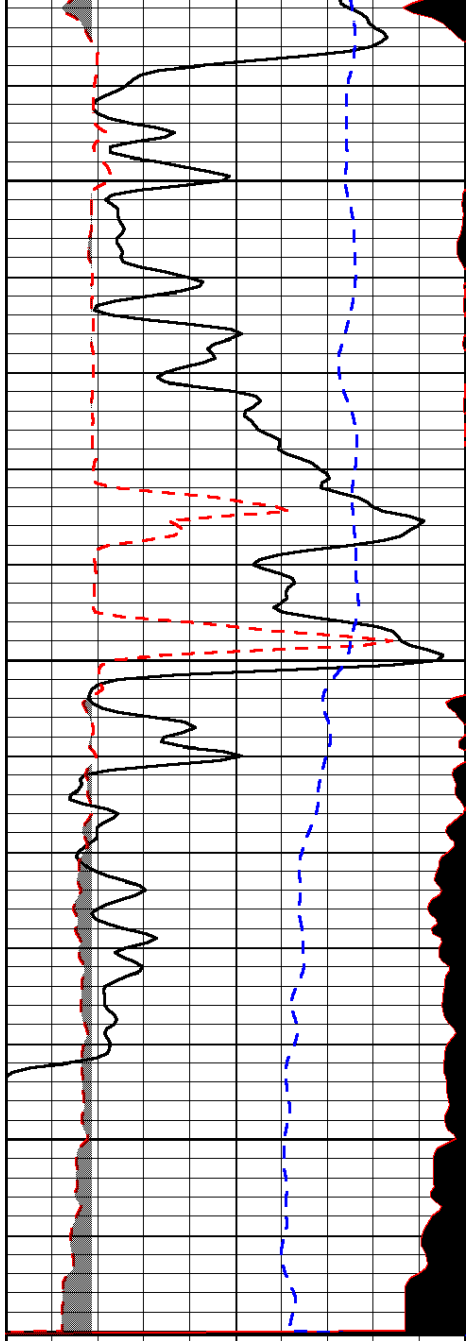


-34

-34

-30

-30

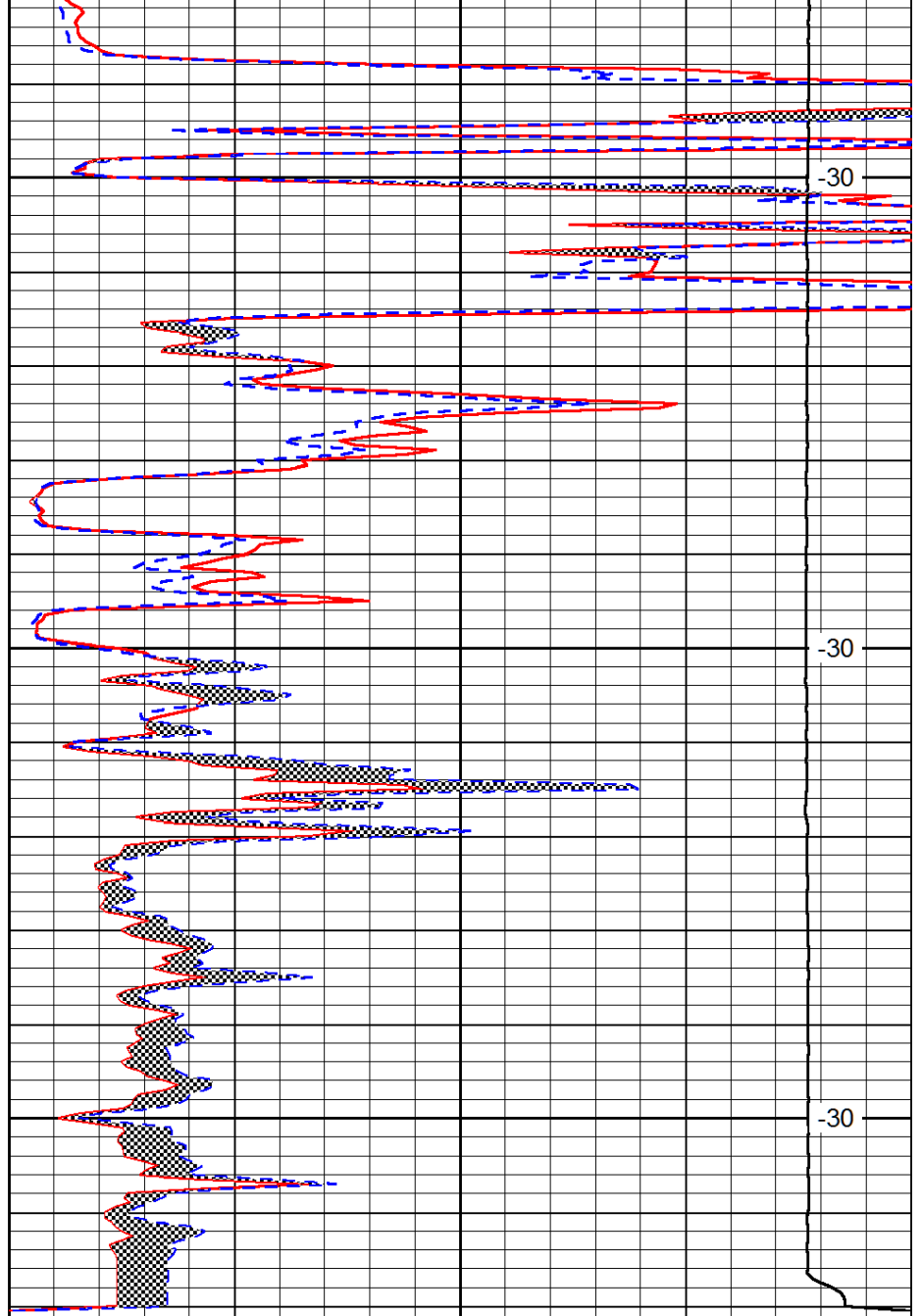


3650

3700

3750

0	Gamma Ray	150
6	MCAL (GAPI)	16
2.875	Mud Cake (GAPI)	7.875
-200	SP (mV)	0



-30

-30

-30

0	Micro Inverse 1 X 1	40
0	Micro Normal 2''	40
10000	Line Weight	0

LSPD