



**Sonic Cement  
Bond Log**

Pioneer Energy Services

API No.

15-009-30395-00-01

Company C G Oil, Inc.

Well JMR No.2 SWD

Field Trapp

County Barton

State Kansas

Location

330' FNL & 330' FEL  
NE-NE-NE/4

Other Services  
Mast Trailer

Sec: 28

Twp: 16 S

Rge: 13 W

Elevation

Permanent Datum Ground Level Elevation 1941  
Log Measured From Kelly Bushing 9' Ft. Above Perm. Datum  
Drilling Measured From Kelly Bushing

K.B. 1950  
D.F. 1948  
G.L. 1941

Run Number	One	
Date Survey	11/7/2014	
Date Cementing	10/31/2014	
Type Cementing Operation	Primary	
Depth Driller	3691	
Depth Logger	3502	
Logged Interval	3502 to 2450	to
Casing Driller	5.5" @ T.D.	@
Float Collar -- D.V. Tool	////	////
Squeeze Depth	////	
Amount & Type Cement	////	
Amount & Type Admix	////	
Type Fluid In Hole	Water	
Fluid Level	Full	
Salinity PPM CL	////	
Weight lb/gal -- Vis.	////	////
Approx. Logged Cement Top	2750	
Calculated Cement Top	////	
Max. Hole Temperature	112	
Tool No.	RBT 4-4	
Spacing Recorded	3-5	
Equipment -- Location	12 A Drilling Hays	
Recorded By	Mr Ron Schmidtberger	
Witnessed By		

<<< Fold Here >>>

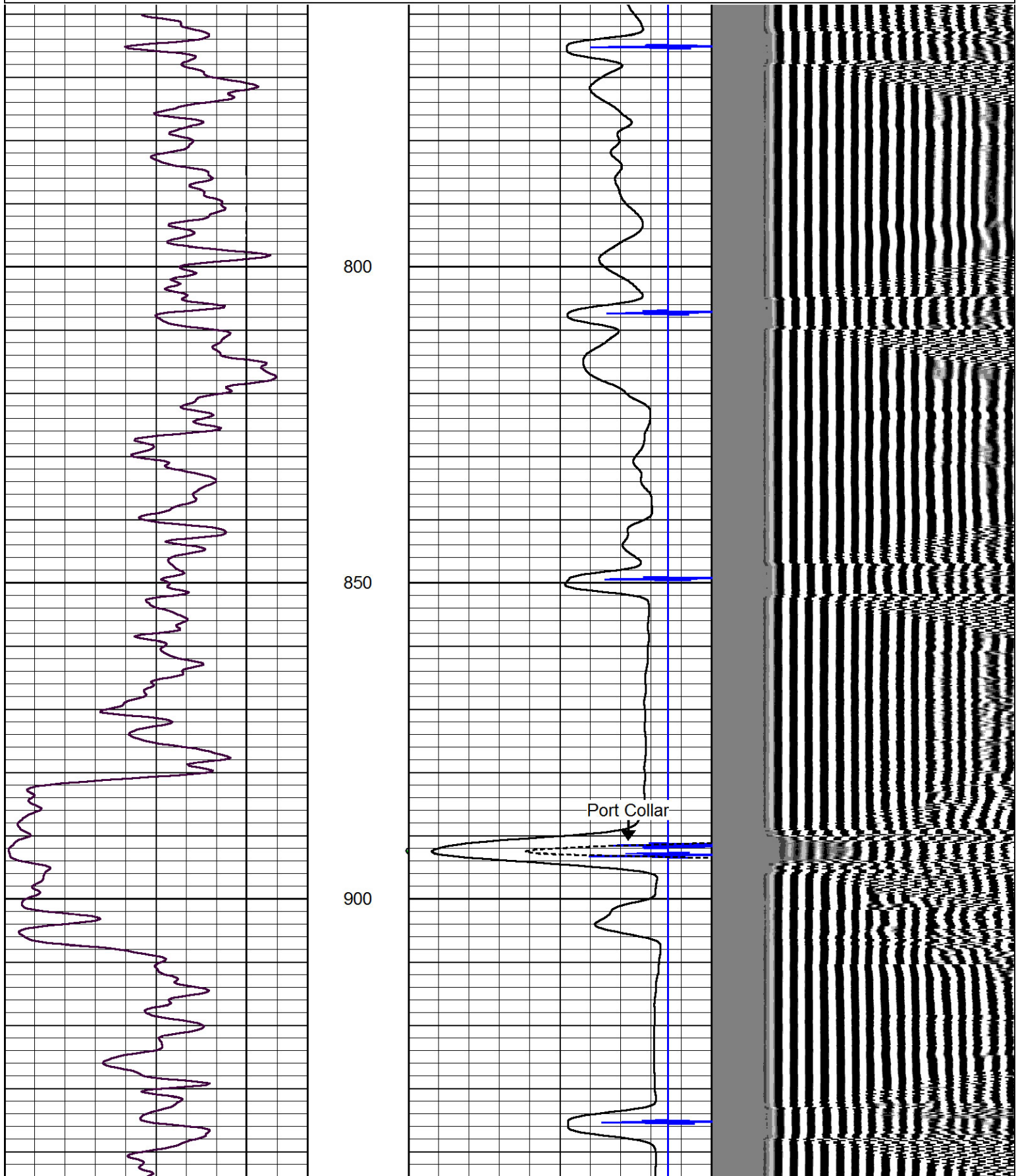
All interpretations are opinions based on inferences from electrical or other measurements and we cannot and do not guarantee the accuracy or correctness of any interpretation, and we shall not, except in the case of gross or willful negligence on our part, be liable or responsible for any loss, costs, damages, or expenses incurred or sustained by anyone resulting from any interpretation made by any of our officers, agents or employees. These interpretations are also subject to our general terms and conditions set out in our current Price Schedule.

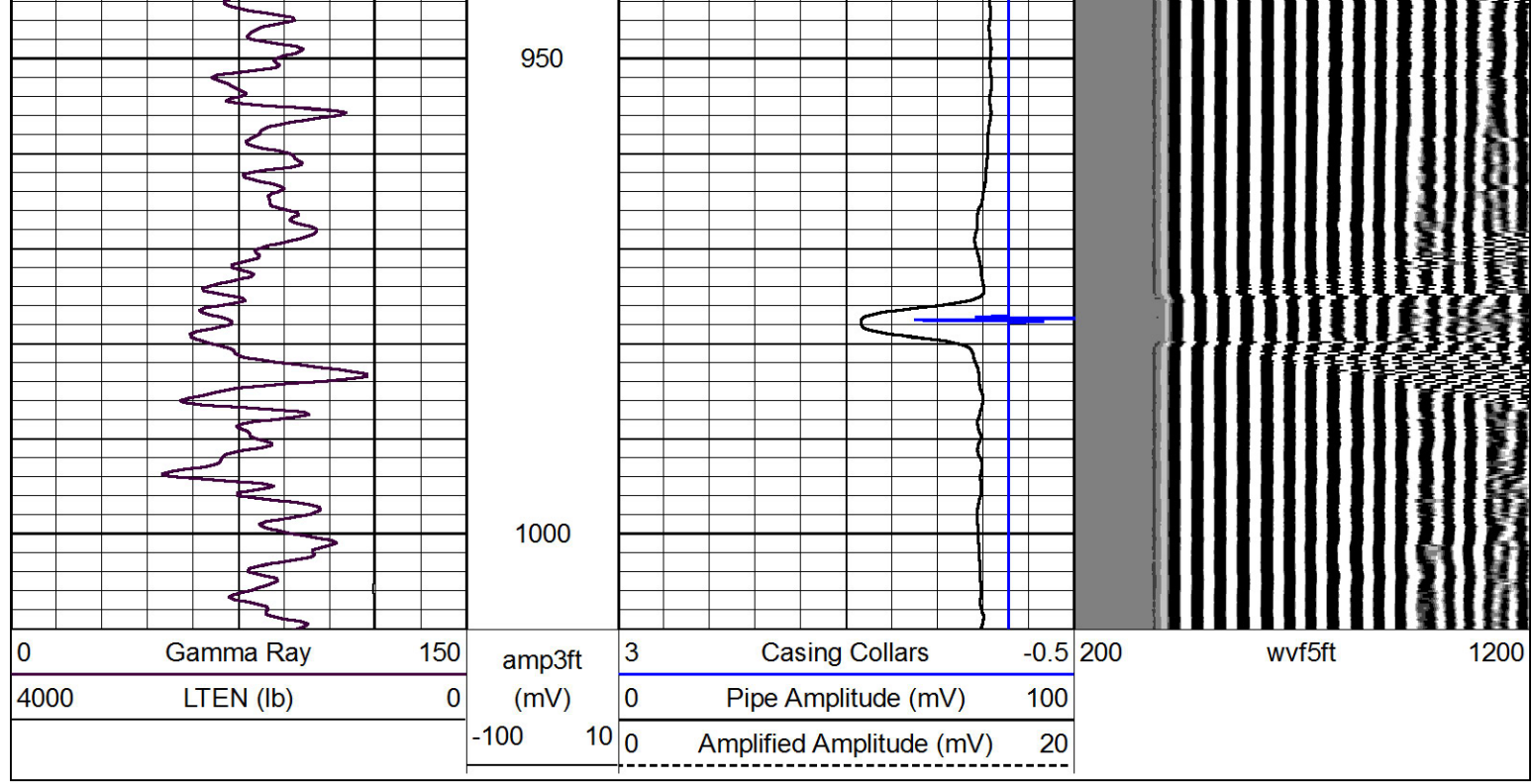
Comments

Thank you for using Pioneer Energy Services  
785.625.3858  
  
Susank Ks.  
1/2 E  
,S into 1/2 mile

Database File: c\_g\_oil\_jmr-2\_swd.db  
 Dataset Pathname: pass3  
 Presentation Format: cbldr  
 Dataset Creation: Fri Nov 07 13:25:40 2014 by Log 7.0 B1  
 Charted by: Depth in Feet scaled 1:240

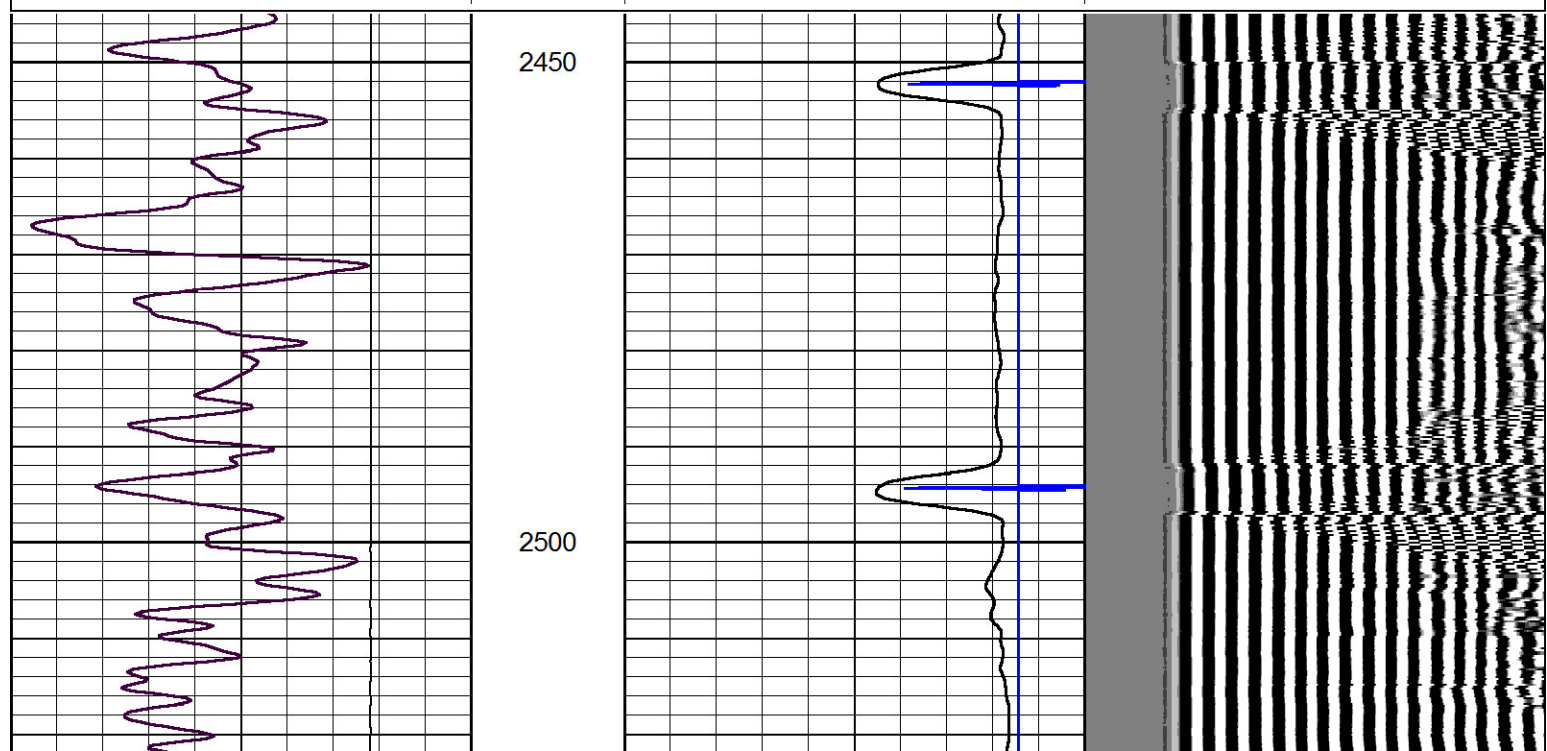
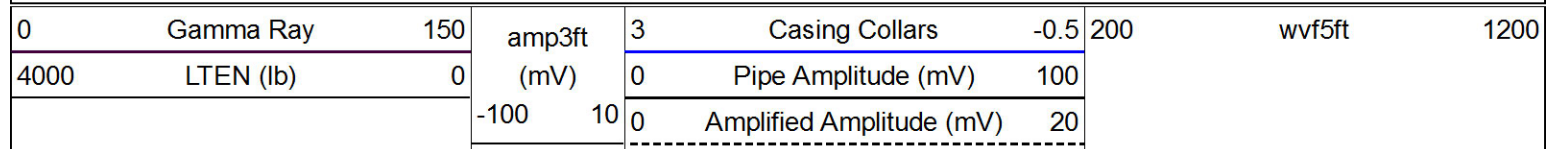
0	Gamma Ray	150	amp3ft	3	Casing Collars	-0.5	200	wvf5ft	1200
4000	LTEN (lb)	0	(mV)	0	Pipe Amplitude (mV)	100			
			-100 10	0	Amplified Amplitude (mV)	20			

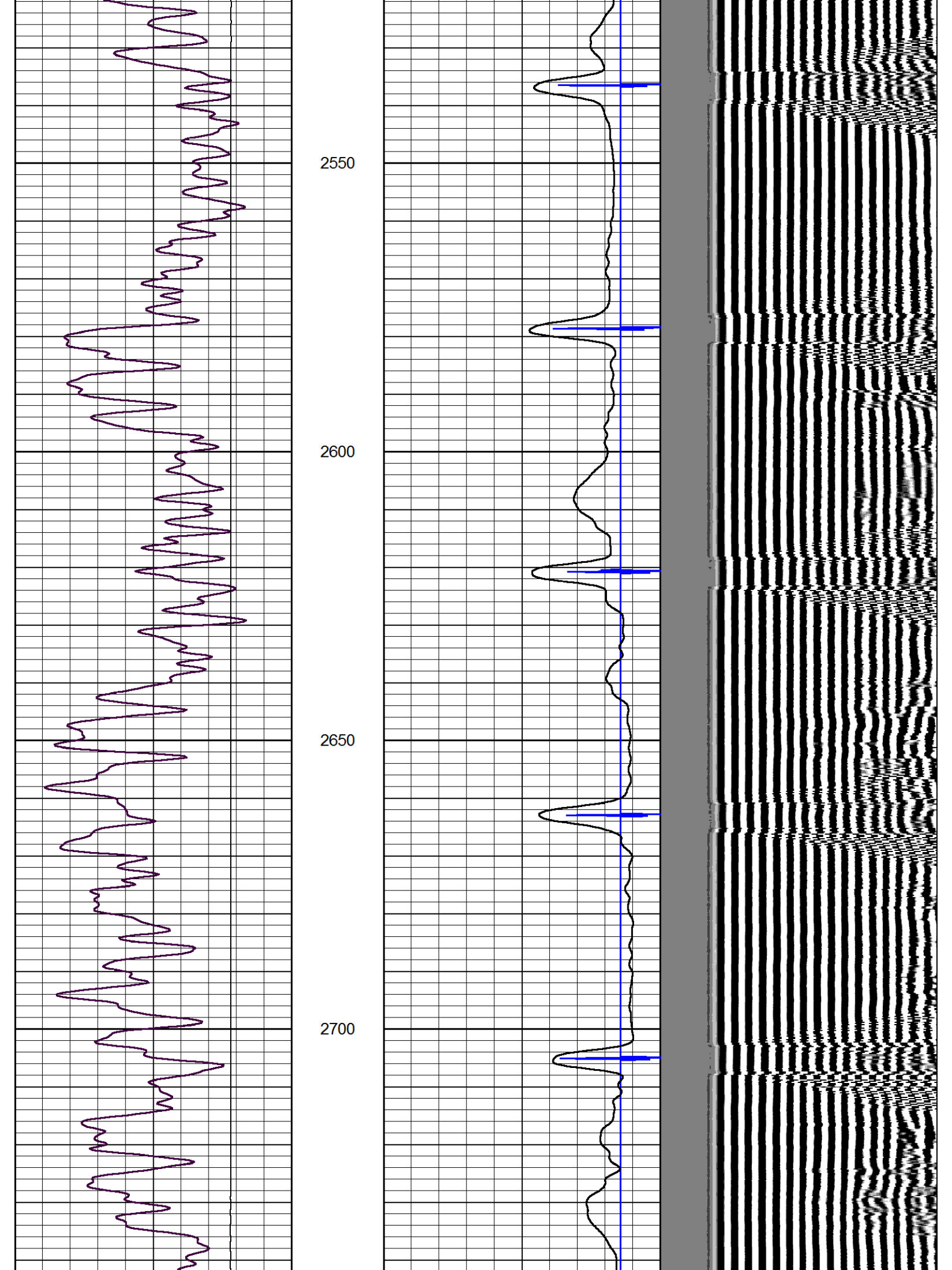


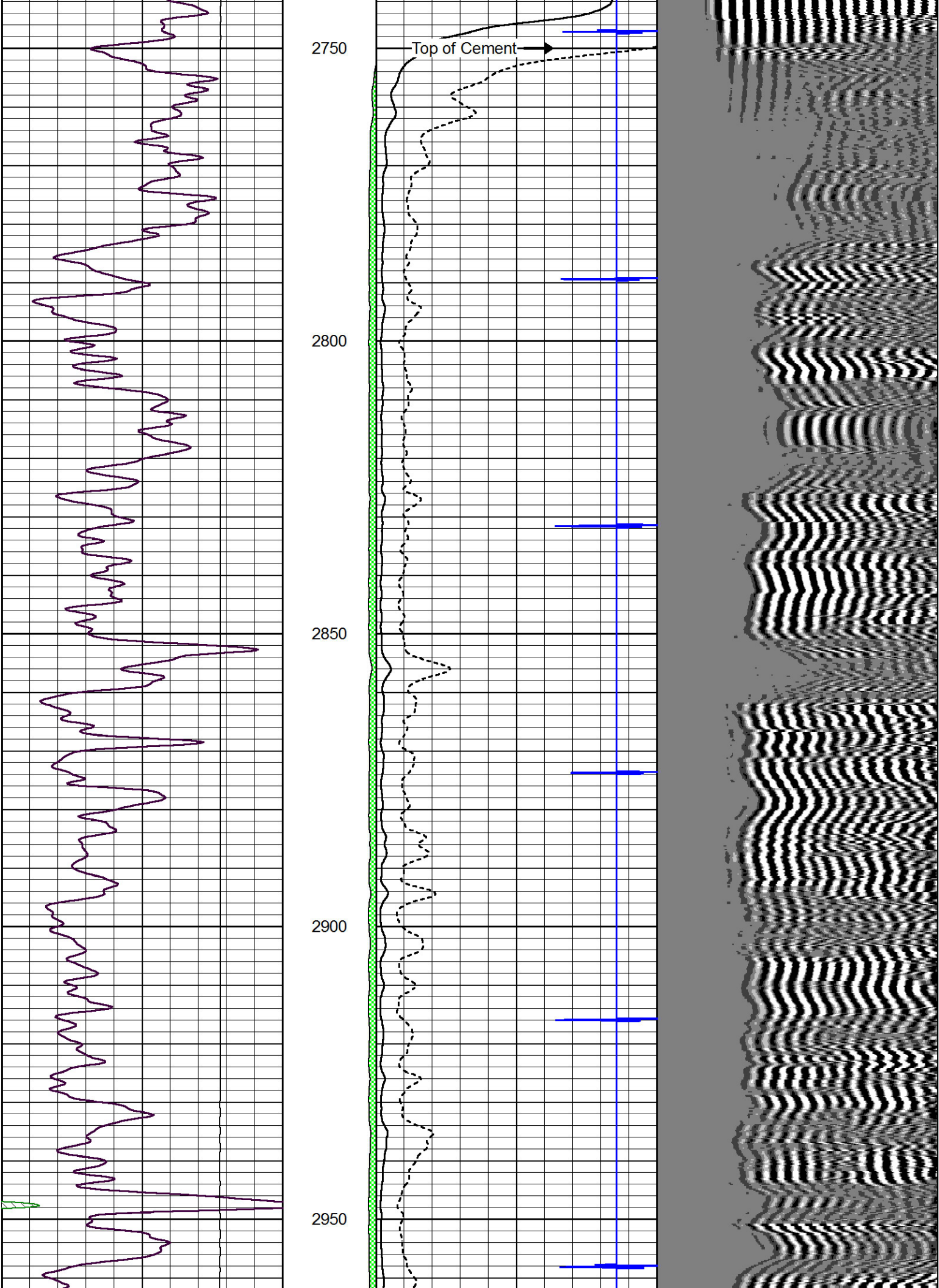


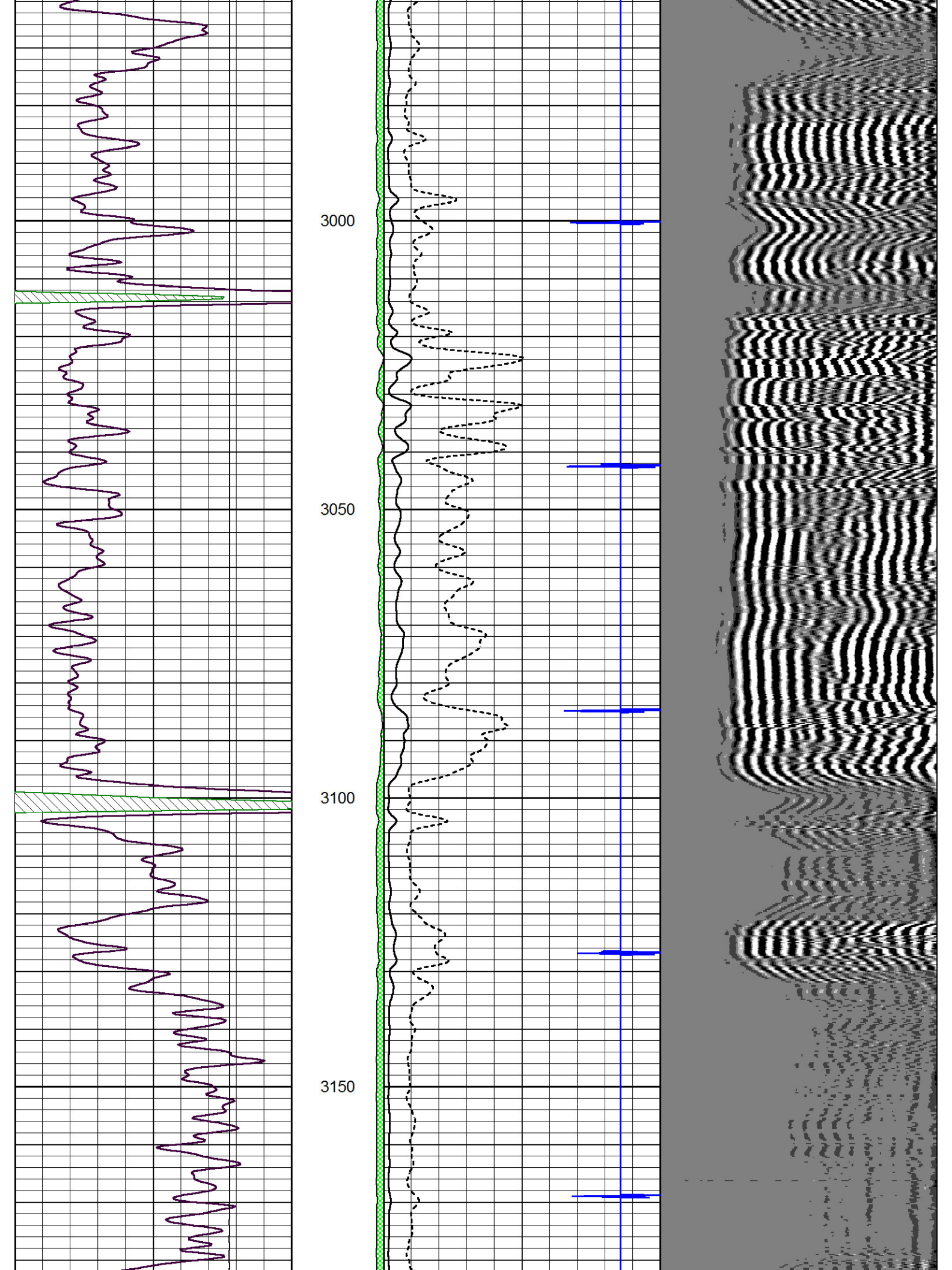
# Main Pass

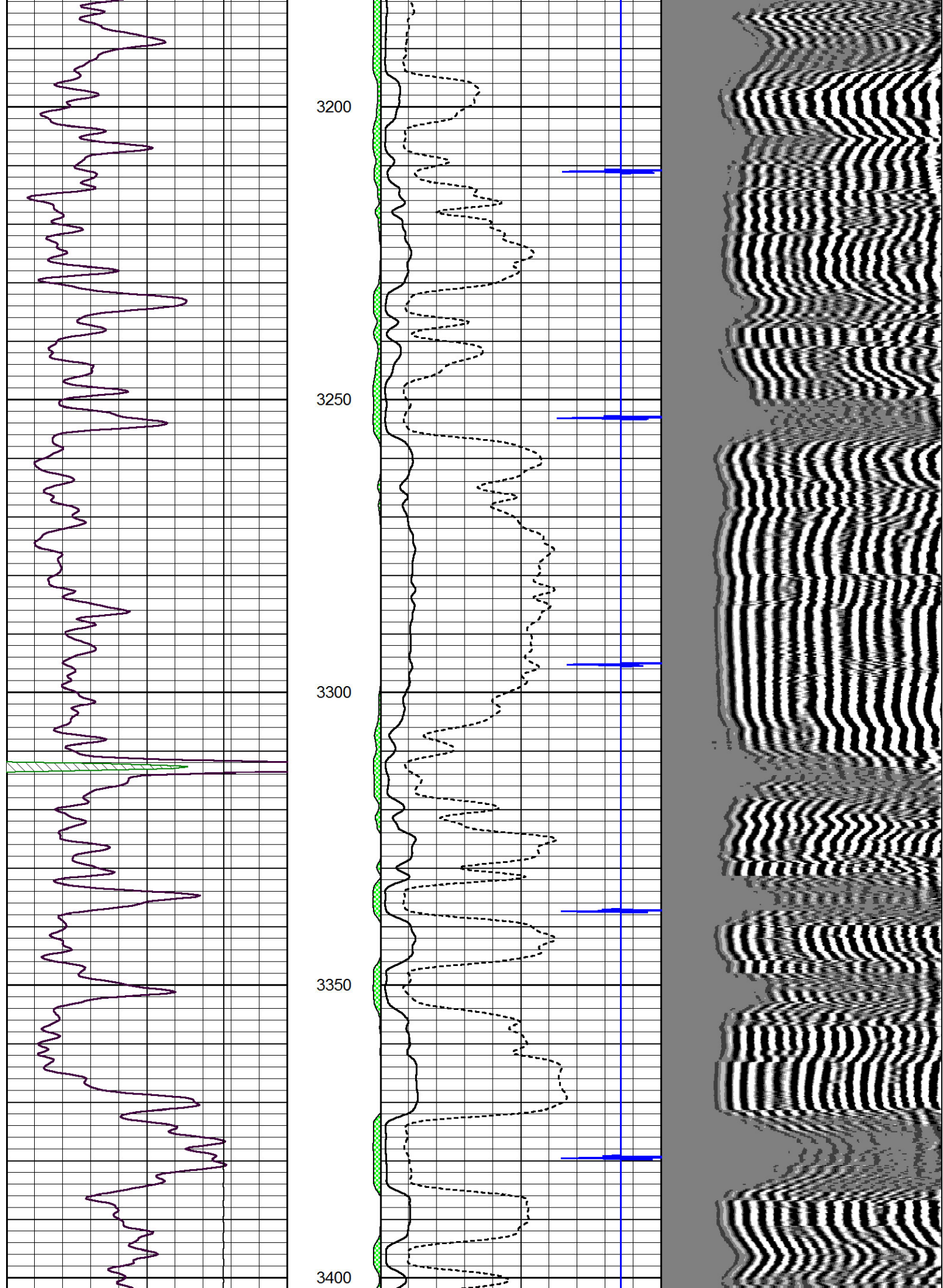
Database File: c\_g\_oil\_jmr-2\_swd.db  
 Dataset Pathname: pass2  
 Presentation Format: cbldr  
 Dataset Creation: Fri Nov 07 13:06:38 2014 by Log 7.0 B1  
 Charted by: Depth in Feet scaled 1:240

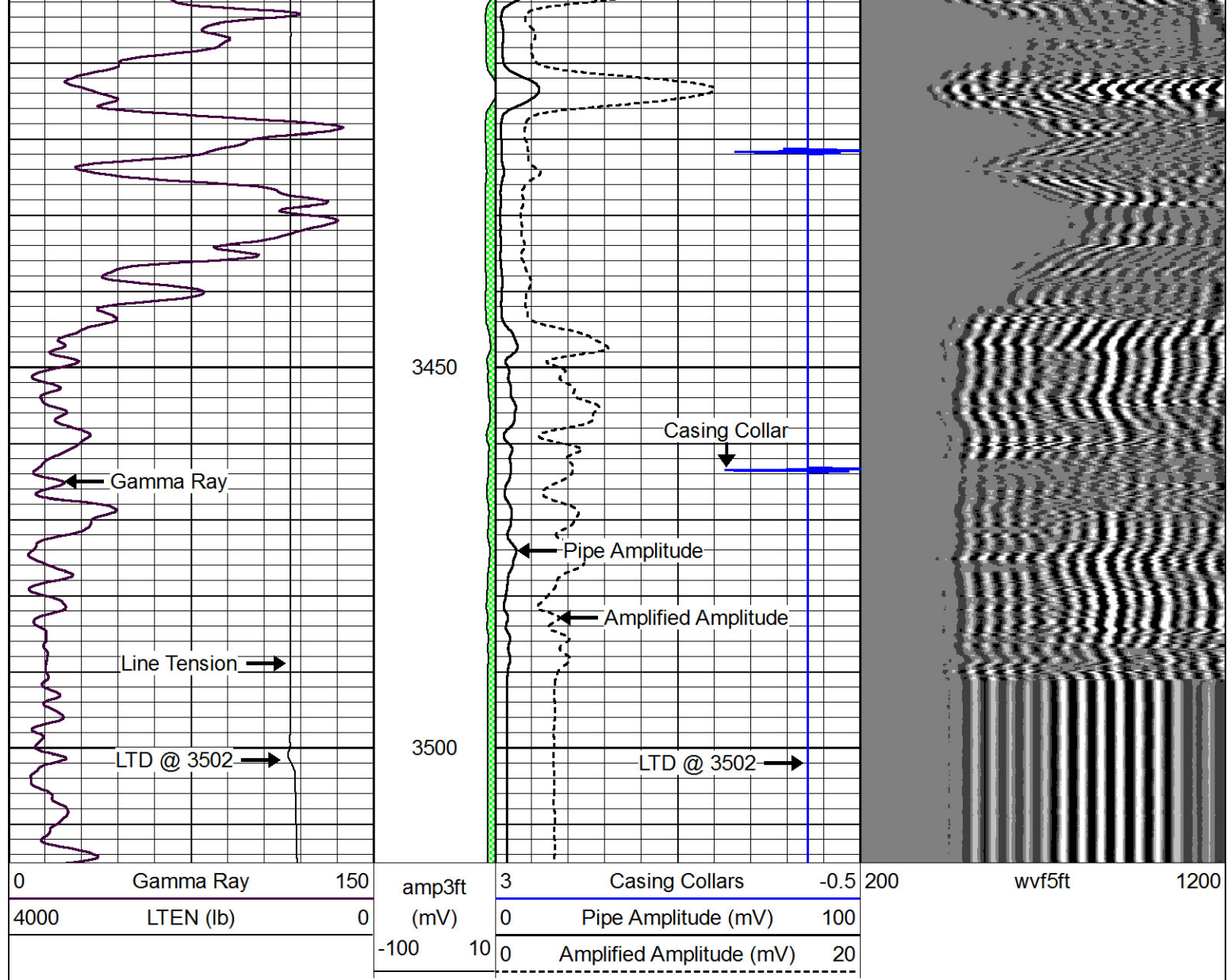






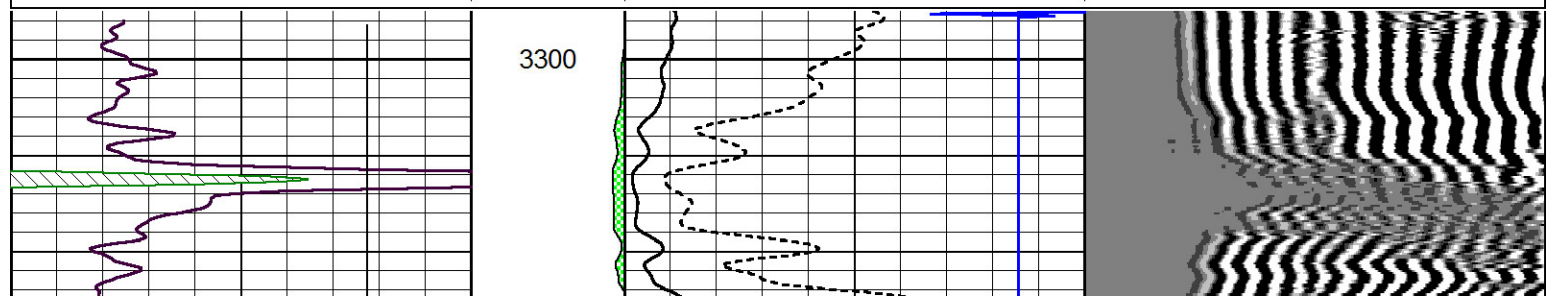
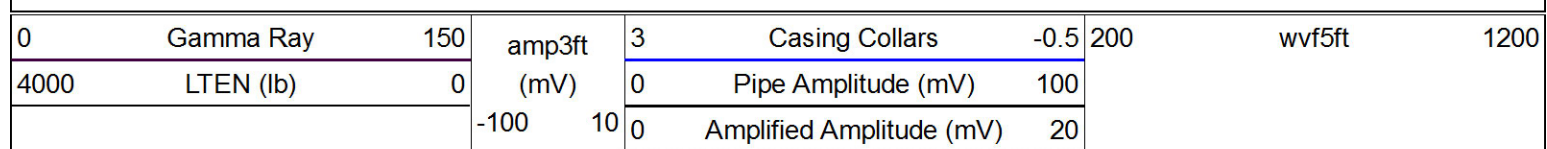


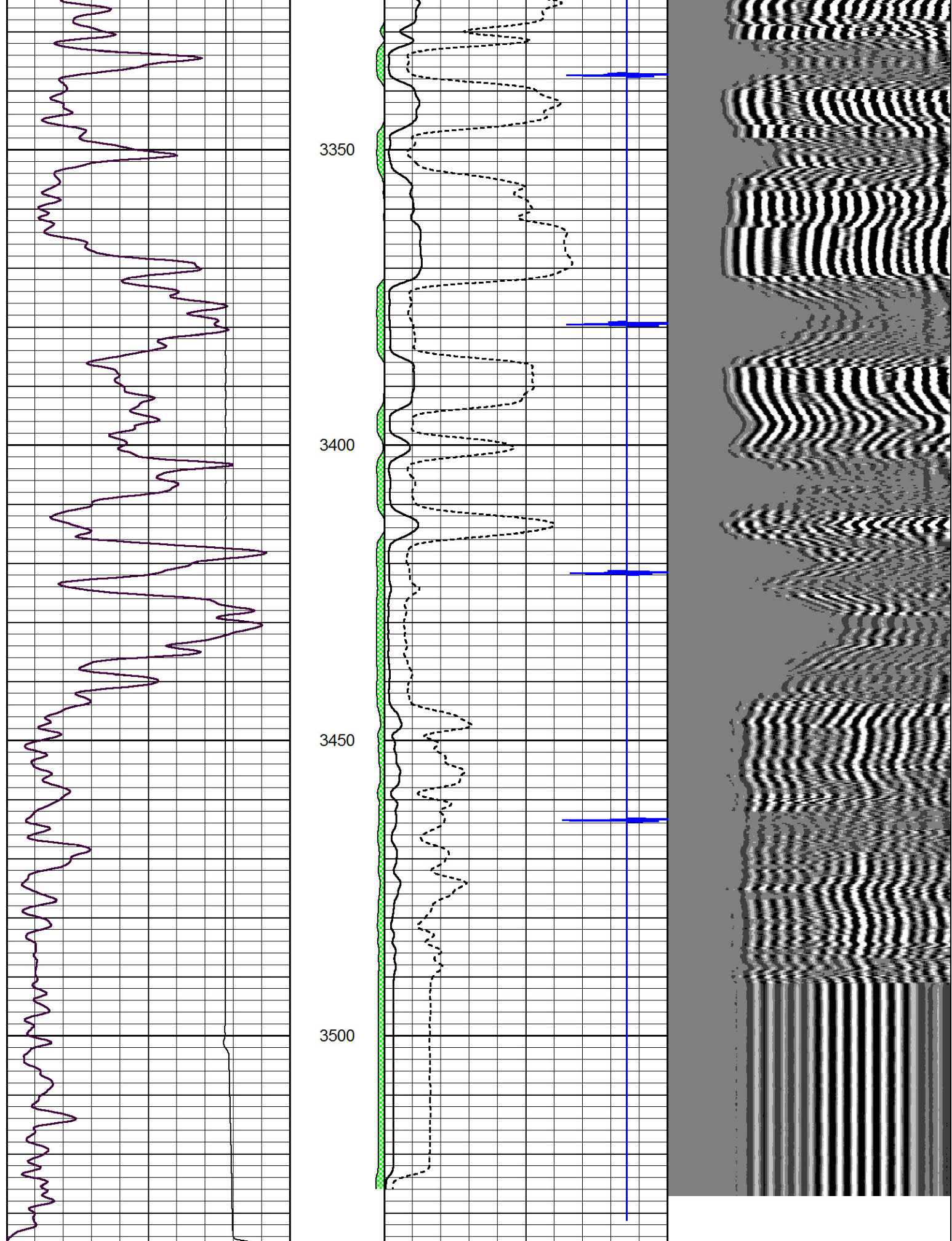




# Repeat Section

Database File: c\_g\_oil\_jmr-2\_swd.db  
 Dataset Pathname: pass1.1  
 Presentation Format: cbldr  
 Dataset Creation: Fri Nov 07 13:13:46 2014 by Calc 7.0 B1  
 Charted by: Depth in Feet scaled 1:240





0	Gamma Ray	150	amp3ft	3	Casing Collars	-0.5	200	wvf5ft	1200
4000	LTEN (lb)	0	(mV)	0	Pipe Amplitude (mV)	100			

-100	10	0	Amplified Amplitude (mV)	20
------	----	---	--------------------------	----