



Pioneer Energy Services

Microresistivity Log

15-153-21,073-00-00

Company	Berexco, LLC
Well	Moser No. 4-32
Field	Wildcat
County	Rawlins
State	Kansas
Location	330' FSL & 2640' FWL
Sec: 32	Twp: 1S Rge: 36W
Other Services	RAG
Permanent Datum	Ground Level Elevation 3243
Log Measured From	Kelly Bushing 11 Ft. Above Perm. Datum
Drilling Measured From	Kelly Bushing
Elevation	K.B. 3254 D.F. G.L. 3243

Date	11/3/14
Run Number	Two
Depth Driller	4680
Depth Logger	4680
Bottom Logged Interval	4679
Top Log Interval	3500
Casing Driller	8.625 @ 312
Casing Logger	306
Bit Size	7.875
Type Fluid in Hole	Chemical
Salinity, ppm CL	800
Density / Viscosity	9.4 70
pH / Fluid Loss	10.0 8.0
Source of Sample	Flowline
Rm @ Meas. Temp	.83 @ 57
Rmf @ Meas. Temp	.62 @ 57
Rmc @ Meas. Temp	1.12 @ 57
Source of Rmf / Rmc	Charts
Rm @ BHT	.39 @ 123
Operating Rig Time	3 Hours
Max Rec. Temp. F	123
Equipment Number	108
Location	Hays
Recorded By	J. Henrickson
Witnessed By	Bryan Bynog

<<< Fold Here >>>

All interpretations are opinions based on inferences from electrical or other measurements and we cannot and do not guarantee the accuracy or correctness of any interpretation, and we shall not, except in the case of gross or willful negligence on our part, be liable or responsible for any loss, costs, damages, or expenses incurred or sustained by anyone resulting from any interpretation made by any of our officers, agents or employees. These interpretations are also subject to our general terms and conditions set out in our current Price Schedule.

Comments

Thank you for using Log-Tech, Inc.
(785) 625-3858

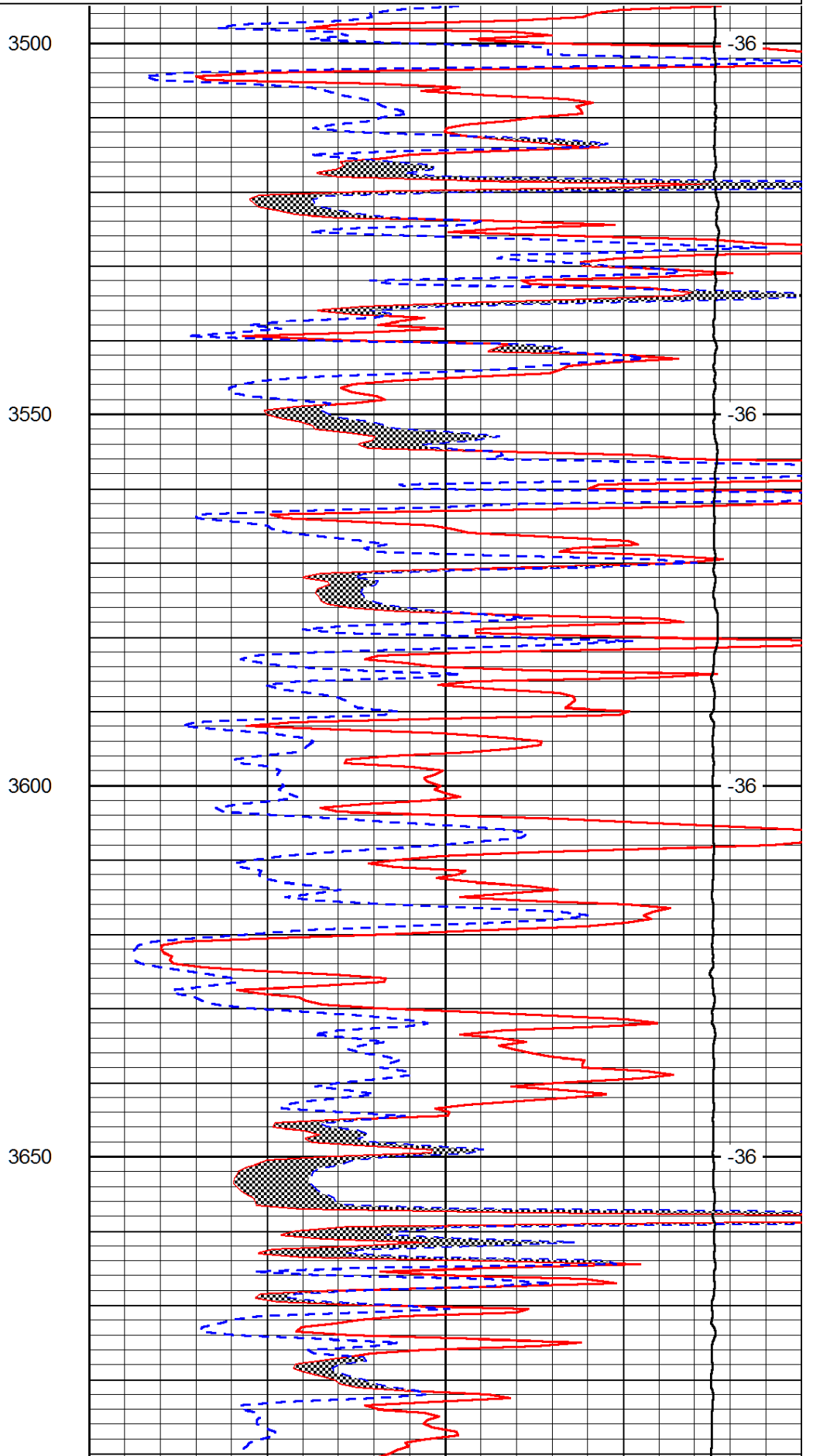
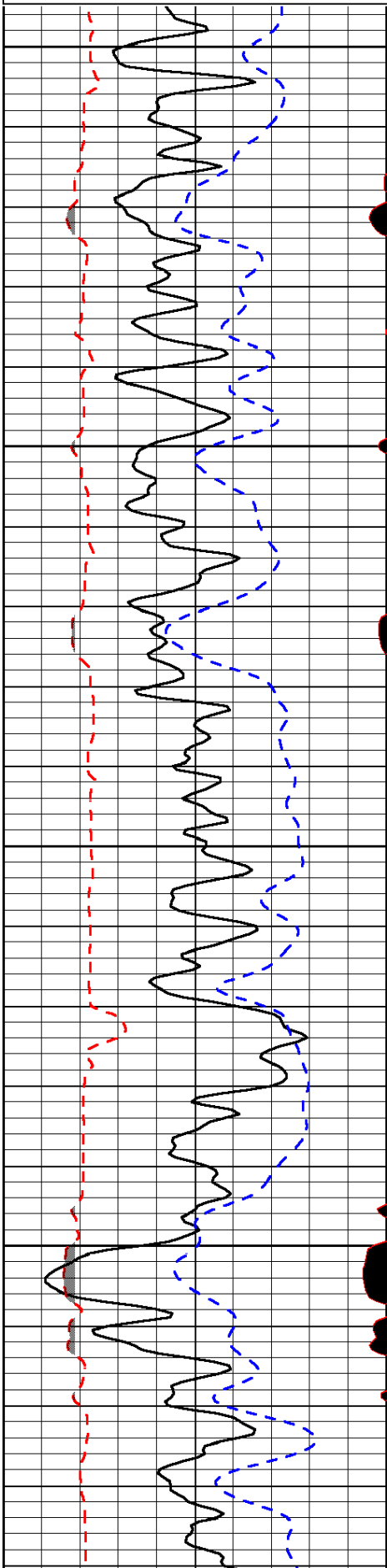
Mcdonald Kansas
North to State Line, 1/2 South, West Into

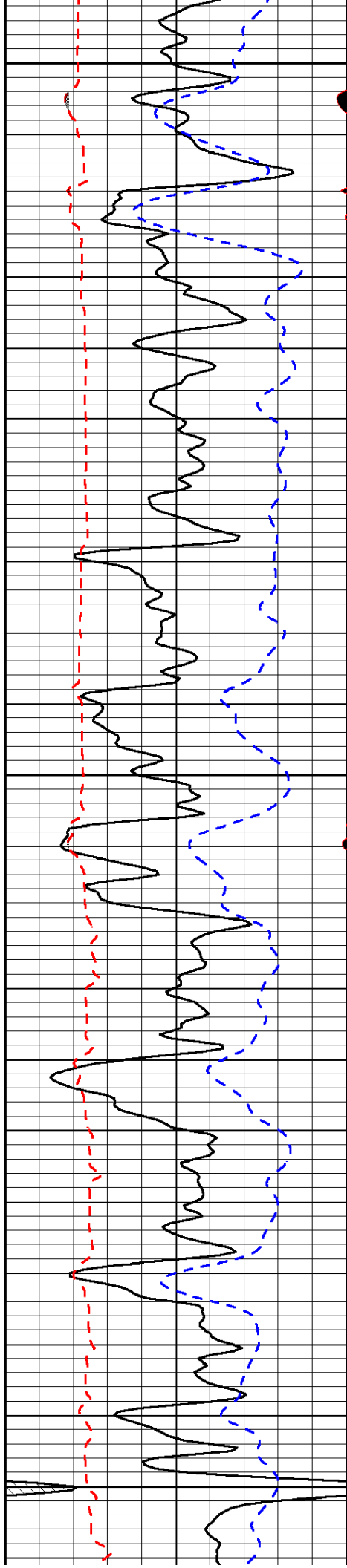
Database File: berexco_moser_4_32hd.db
 Dataset Pathname: rag/berrag
 Presentation Format: micro
 Dataset Creation: Mon Nov 03 16:21:06 2014
 Charted by: Depth in Feet scaled 1:240

0	Gamma Ray	150
6	MCAL (GAPI)	16
2.875	Mud Cake (GAPI)	7.875
-200	SP (mV)	0

0	Micro Inverse 1 X 1	40
0	Micro Normal 2"	40
10000	Line Weight	0

LSPD





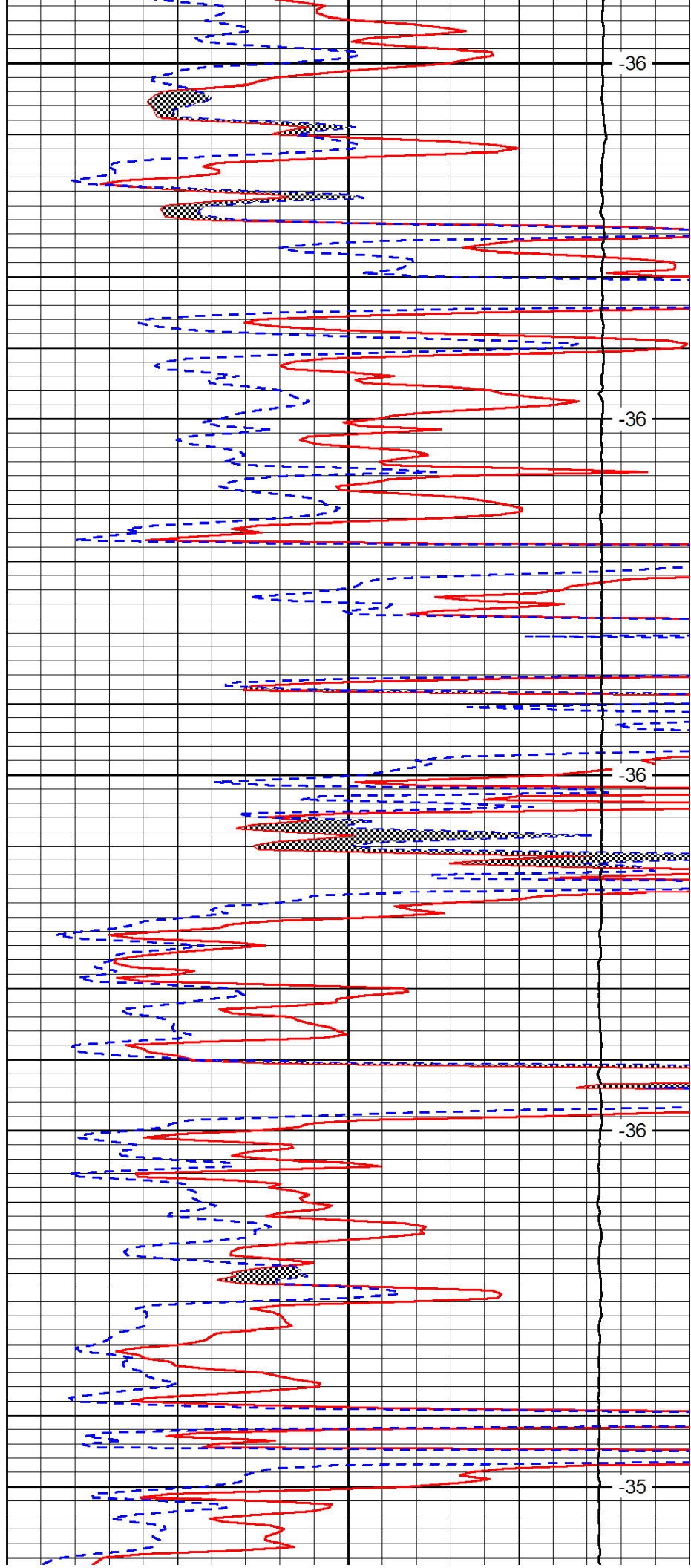
3700

3750

3800

3850

3900



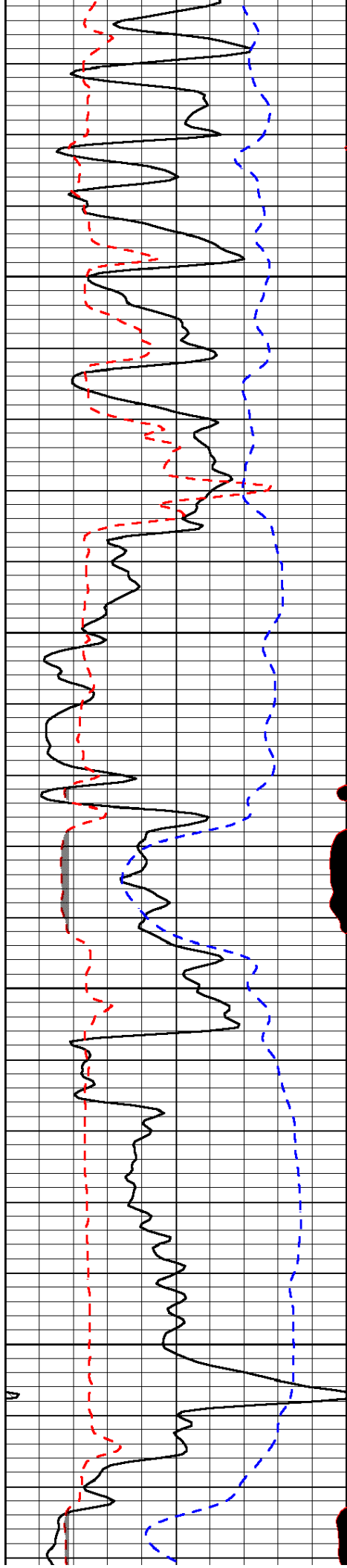
-36

-36

-36

-36

-35

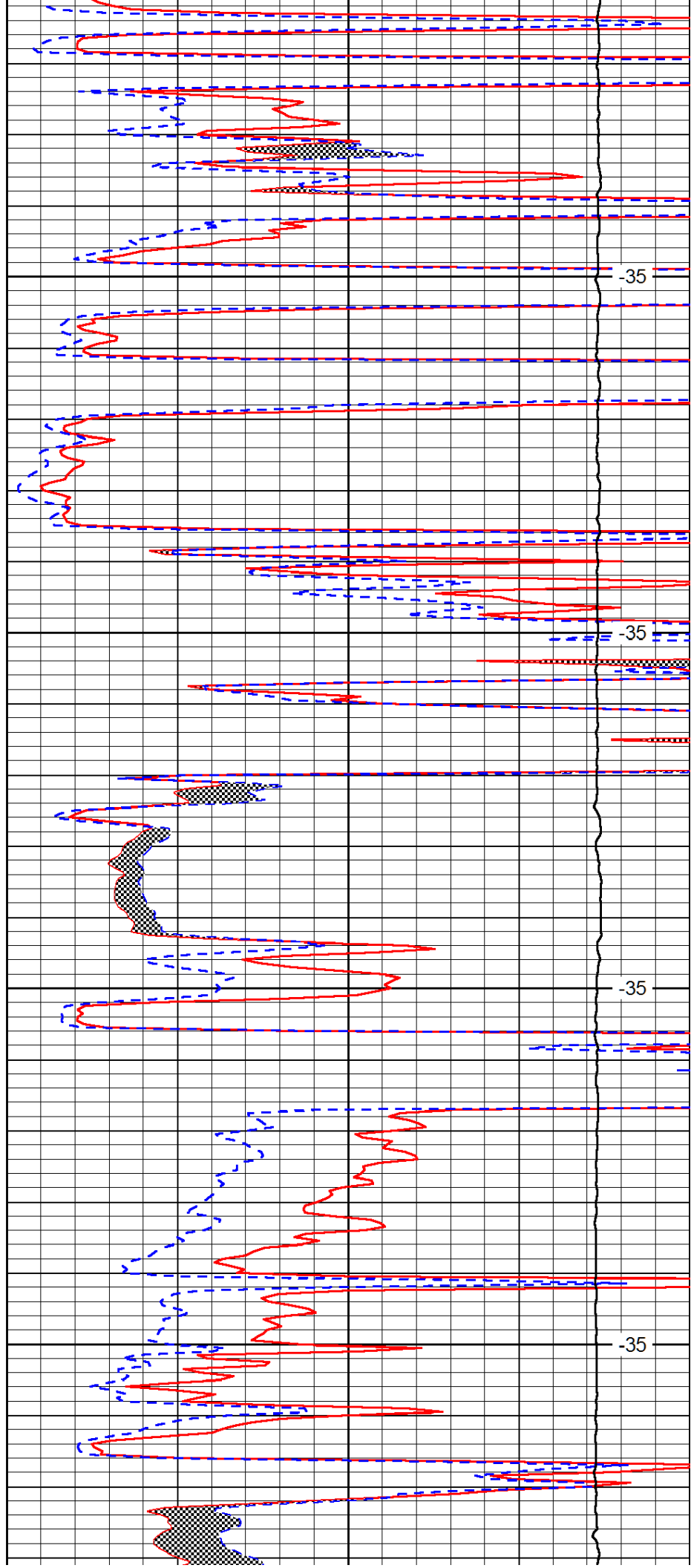


3950

4000

4050

4100

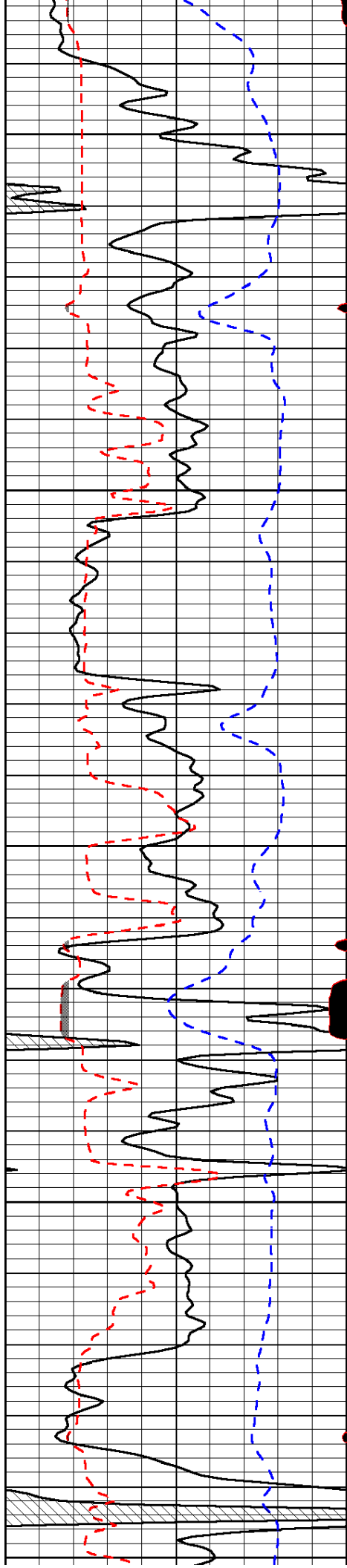


-35

-35

-35

-35



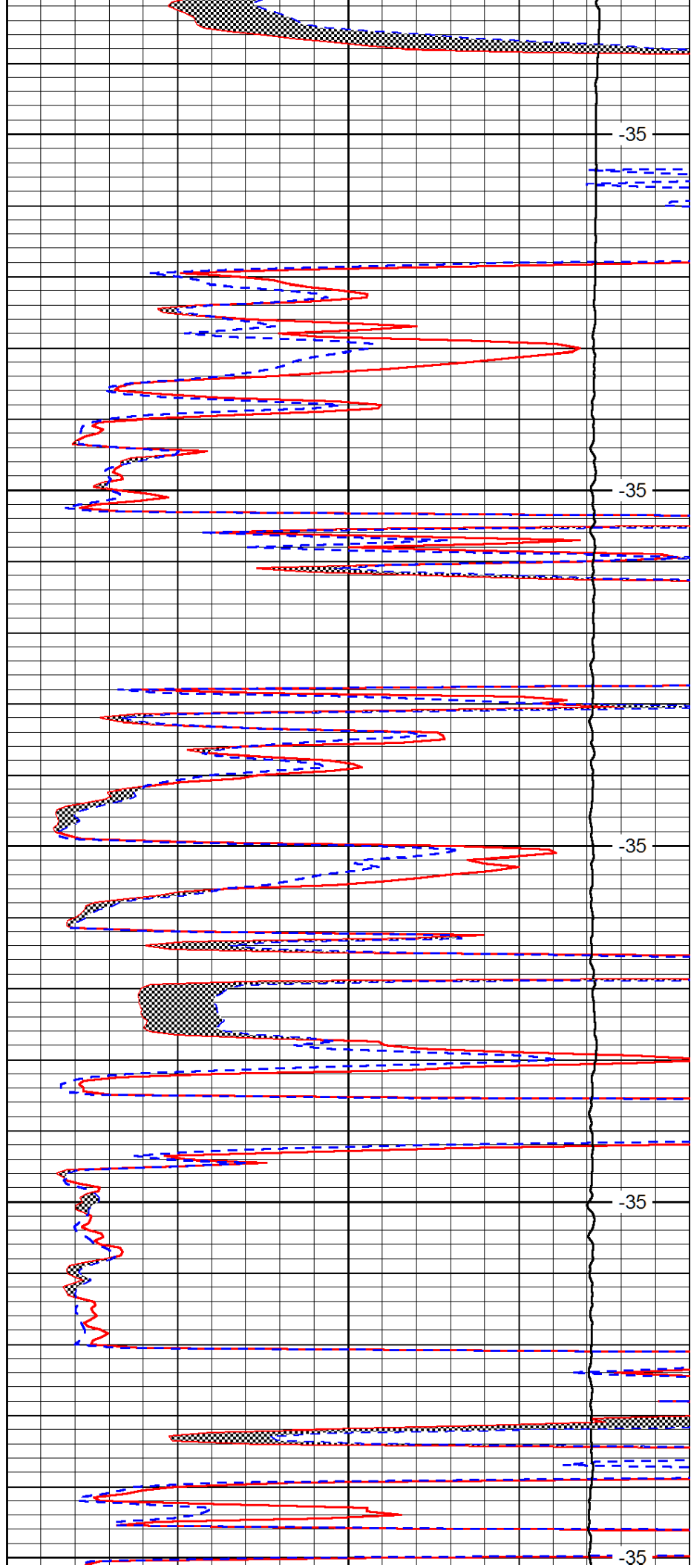
4150

4200

4250

4300

4350



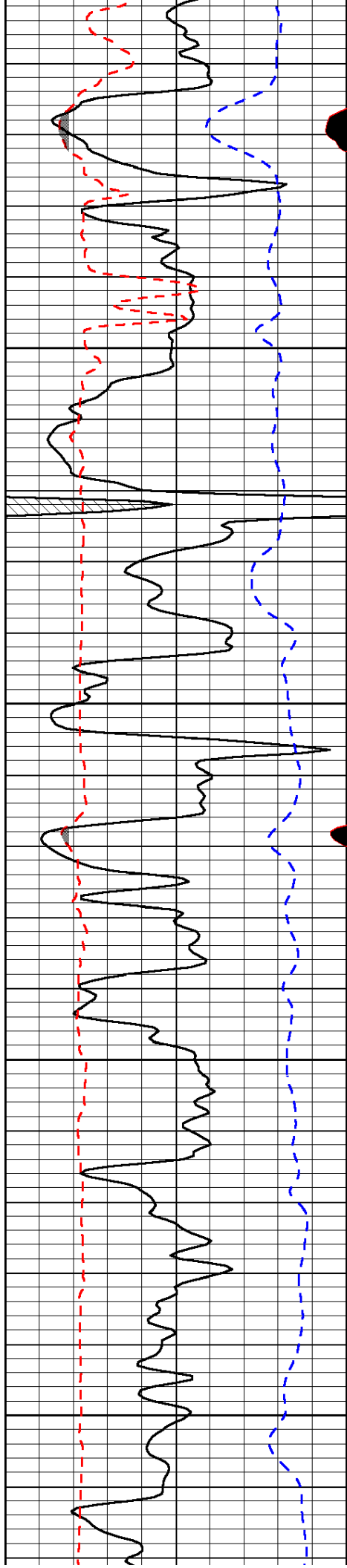
-35

-35

-35

-35

-35

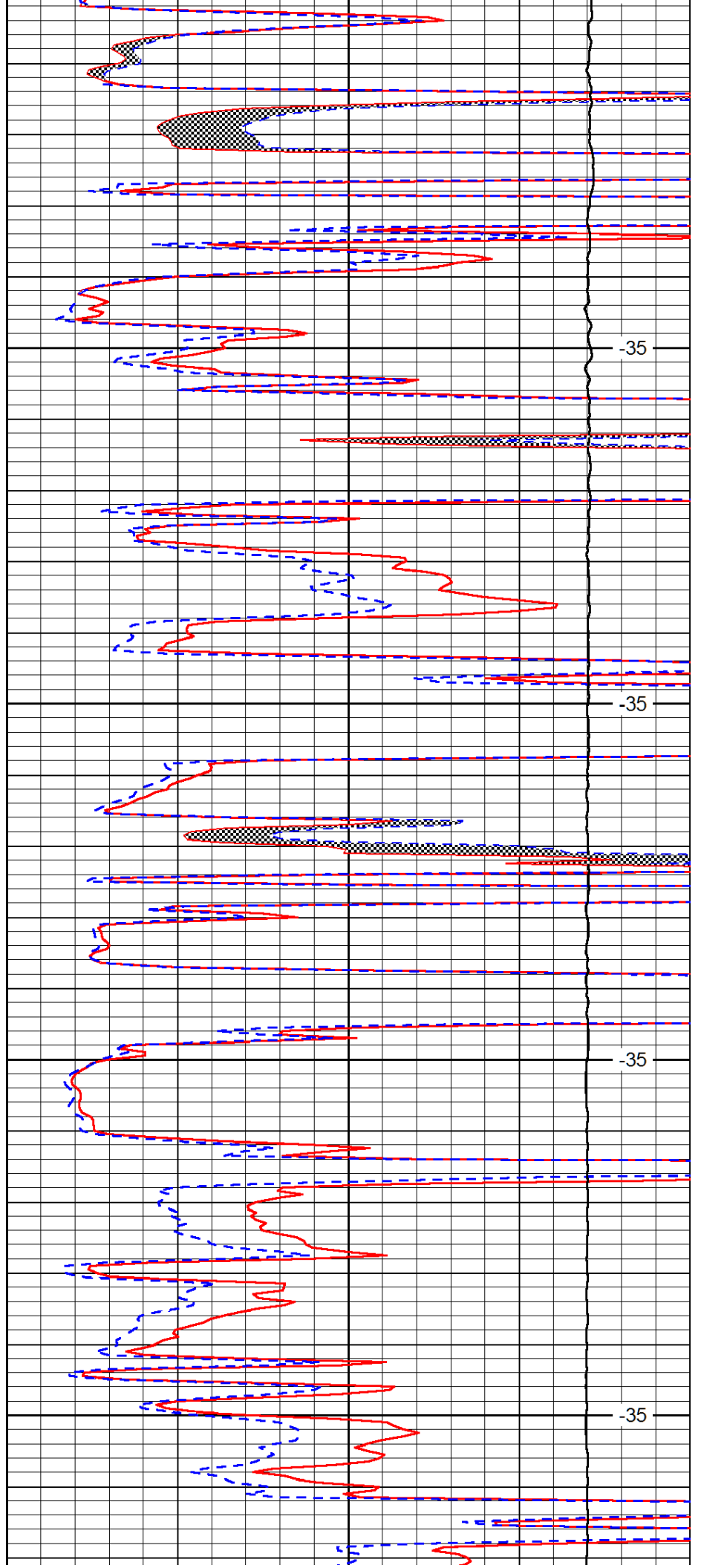


4400

4450

4500

4550

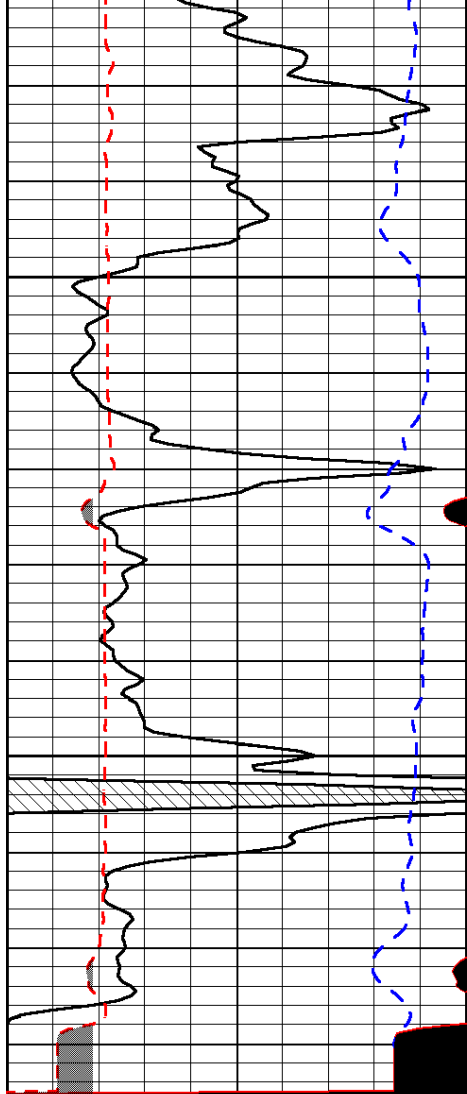


-35

-35

-35

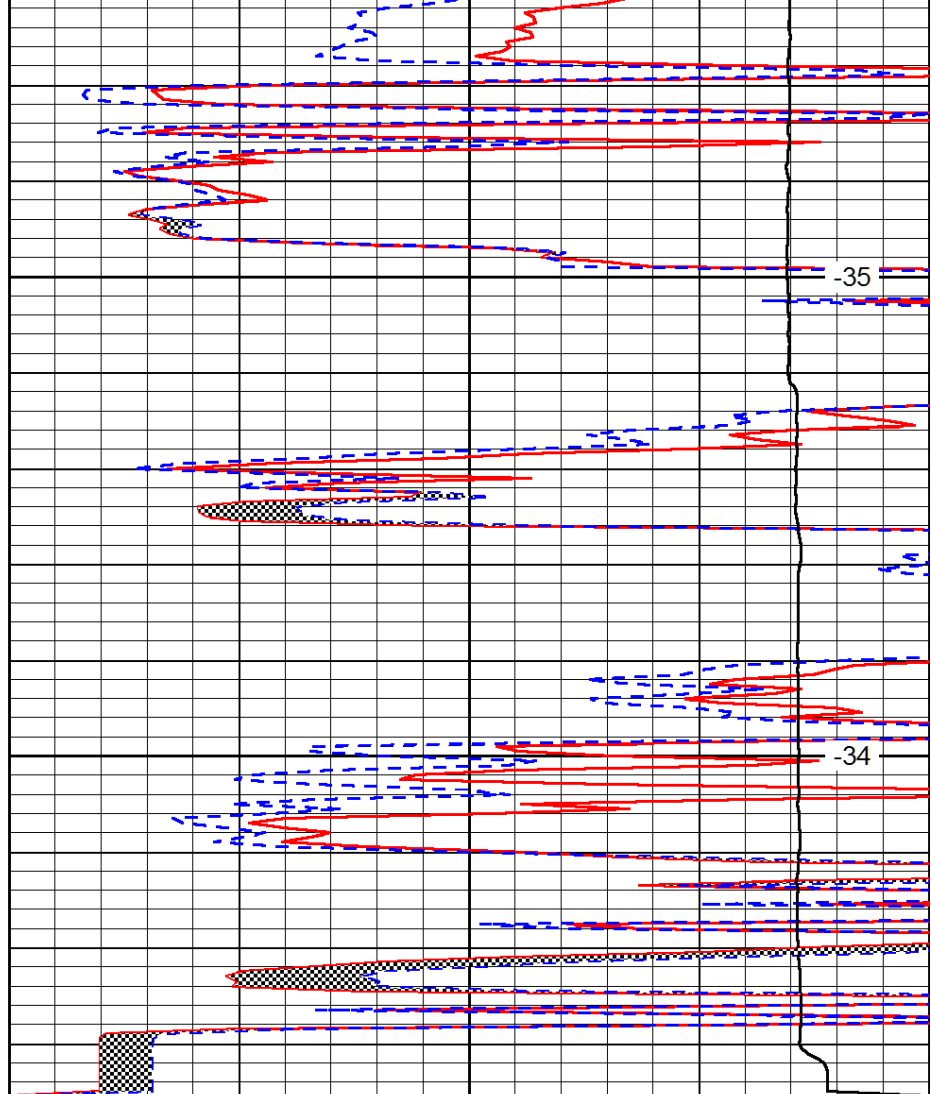
-35



0	Gamma Ray	150
6	MCAL (GAPI)	16
2.875	Mud Cake (GAPI)	7.875
-200	SP (mV)	0

4600

4650



0	Micro Inverse 1 X 1	40
0	Micro Normal 2''	40
10000	Line Weight	0

-35

-34

LSPD