



Pioneer Energy Services

Radiation Guard Log

15-153-21,073-00-00

Company Berexco, LLC
Well Moser No. 4-32
Field Wildcat
County Rawlins **State** Kansas
Location 330' FSL & 2640' FWL
Sec: 32 **Twp:** 1S **Rge:** 36W
Other Services MEL

Permanent Datum Ground Level Elevation 3243
Log Measured From Kelly Bushing 11 Ft. Above Perm. Datum
Drilling Measured From Kelly Bushing

Elevation K.B. 3254
D.F. G.L. 3243

Date	11/3/14	
Run Number	One	
Depth Driller	4680	
Depth Logger	4680	
Bottom Logged Interval	4679	
Top Log Interval	300	
Casing Driller	8.625 @ 312	
Casing Logger	306	
Bit Size	7.875	
Type Fluid in Hole	Chemical	
Salinity, ppm CL	800	
Density / Viscosity	9.4 70	
pH / Fluid Loss	10.0 8.0	
Source of Sample	Flowline	
Rm @ Meas. Temp	.83 @ 57	
Rmf @ Meas. Temp	.62 @ 57	
Rmc @ Meas. Temp	1.12 @ 57	
Source of Rmf / Rmc	Charts	
Rm @ BHT	.39 @ 123	
Operating Rig Time	3 Hours	
Max Rec. Temp. F	123	
Equipment Number	108	
Location	Hays	
Recorded By	J. Henrikson	
Witnessed By	Bryan Bynog	

<<< Fold Here >>>

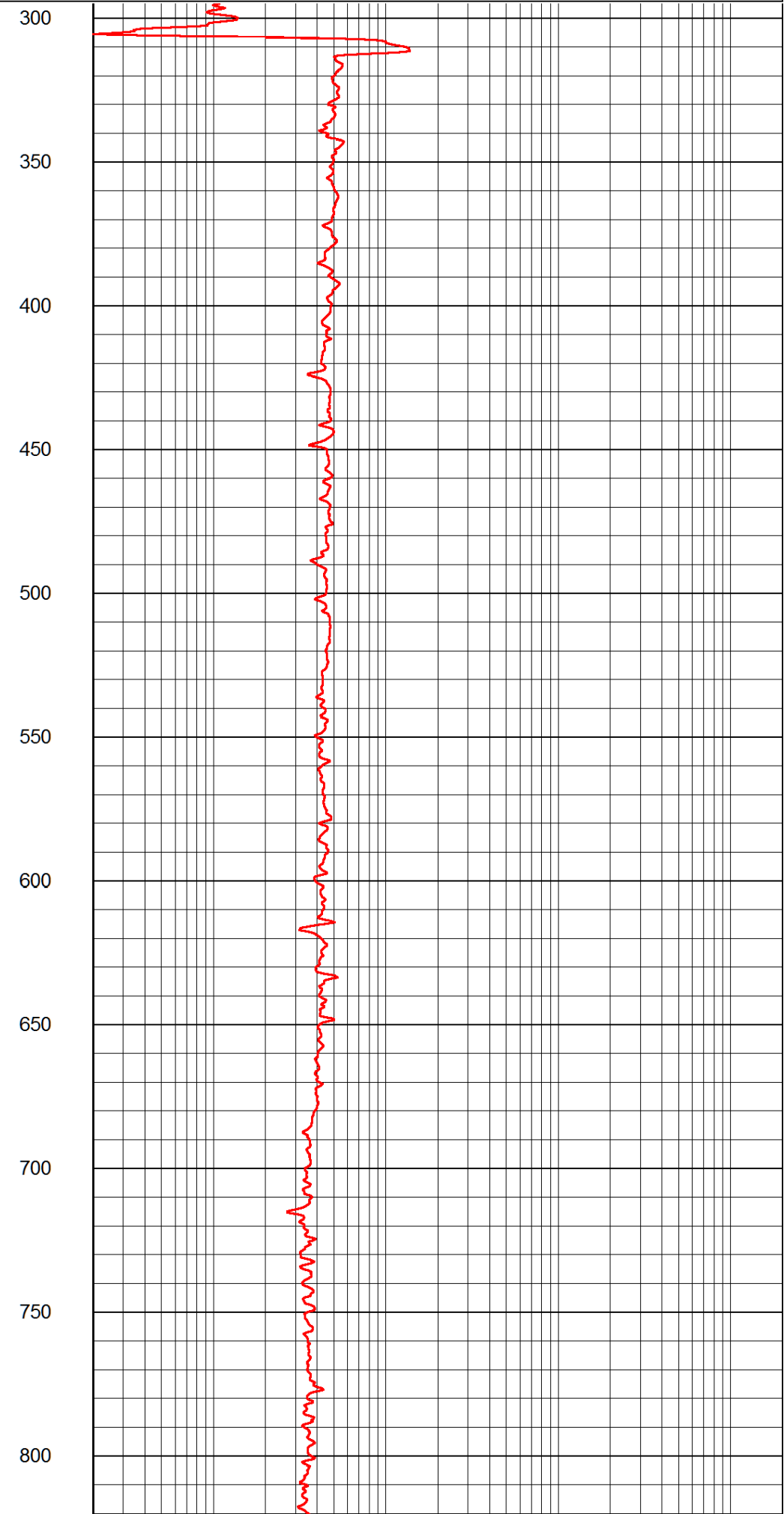
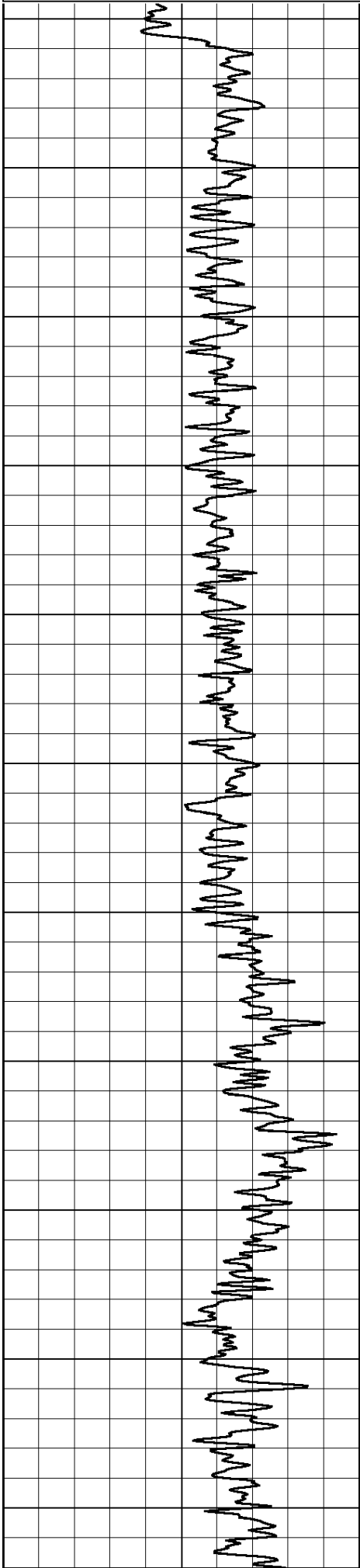
All interpretations are opinions based on inferences from electrical or other measurements and we cannot and do not guarantee the accuracy or correctness of any interpretation, and we shall not, except in the case of gross or willful negligence on our part, be liable or responsible for any loss, costs, damages, or expenses incurred or sustained by anyone resulting from any interpretation made by any of our officers, agents or employees. These interpretations are also subject to our general terms and conditions set out in our current Price Schedule.

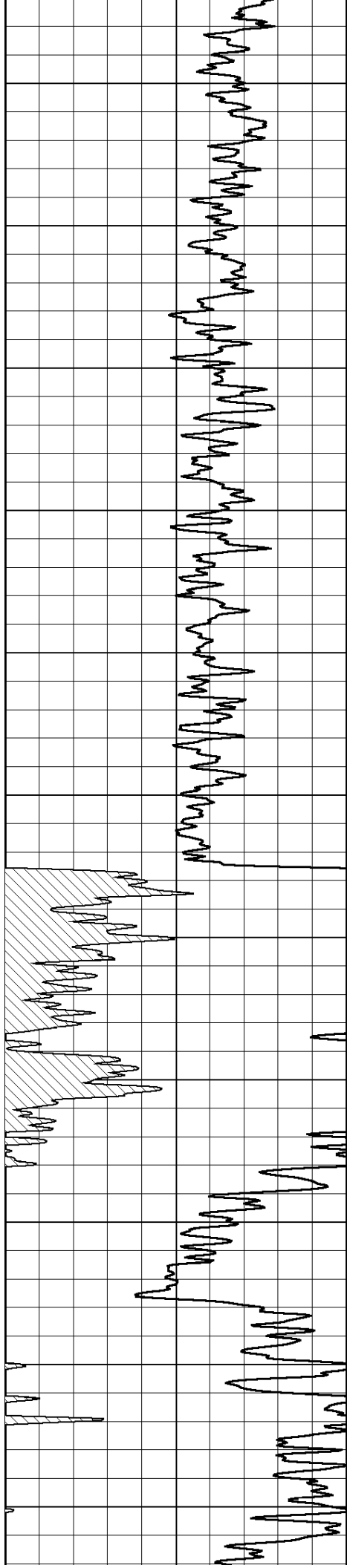
Comments

Thank you for using Log-Tech, Inc.
 (785) 625-3858

 Mcdonald Kansas
 North to State Line, 1/2 South, West Into

Database File: berexco_moser_4_32hd.db
 Dataset Pathname: rag/berrag
 Presentation Format: rag2in
 Dataset Creation: Mon Nov 03 16:21:06 2014
 Charted by: Depth in Feet scaled 1:600





850

900

950

1000

1050

1100

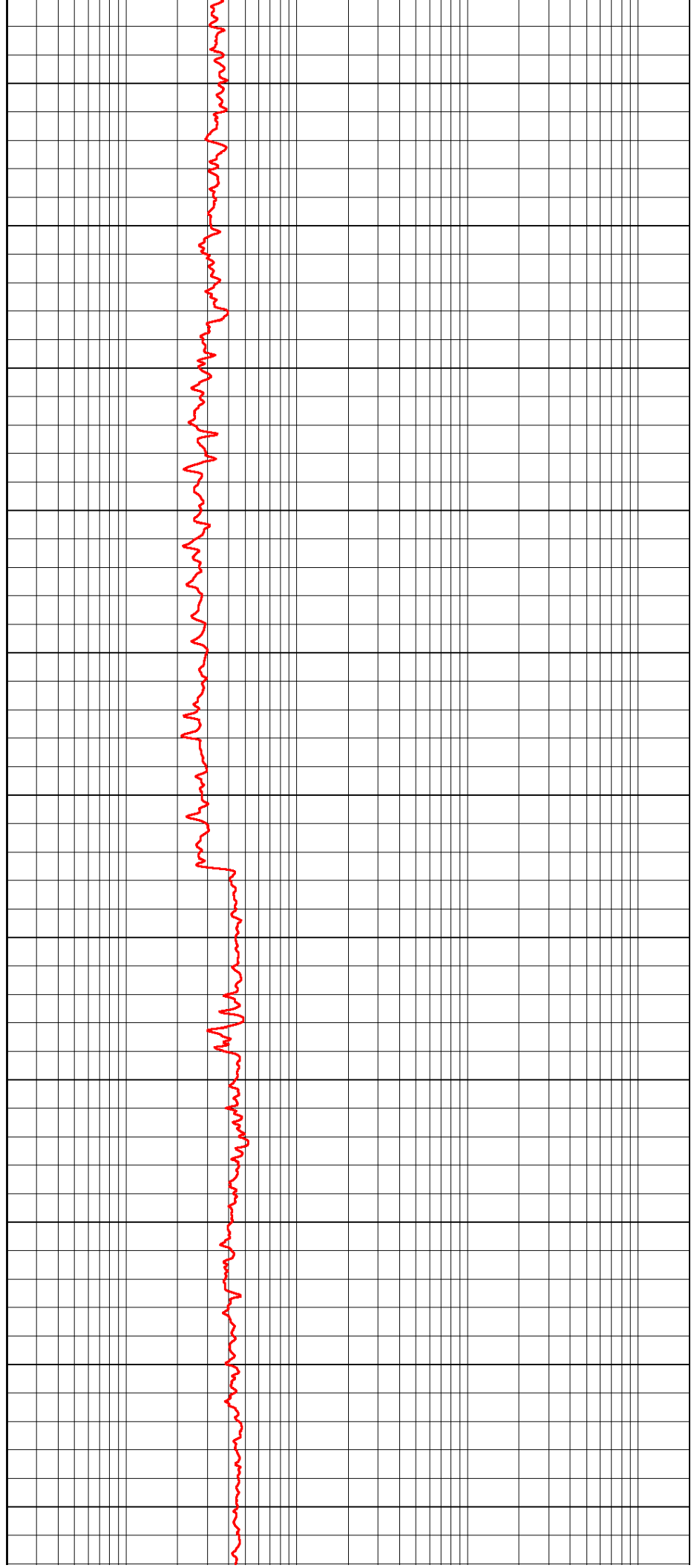
1150

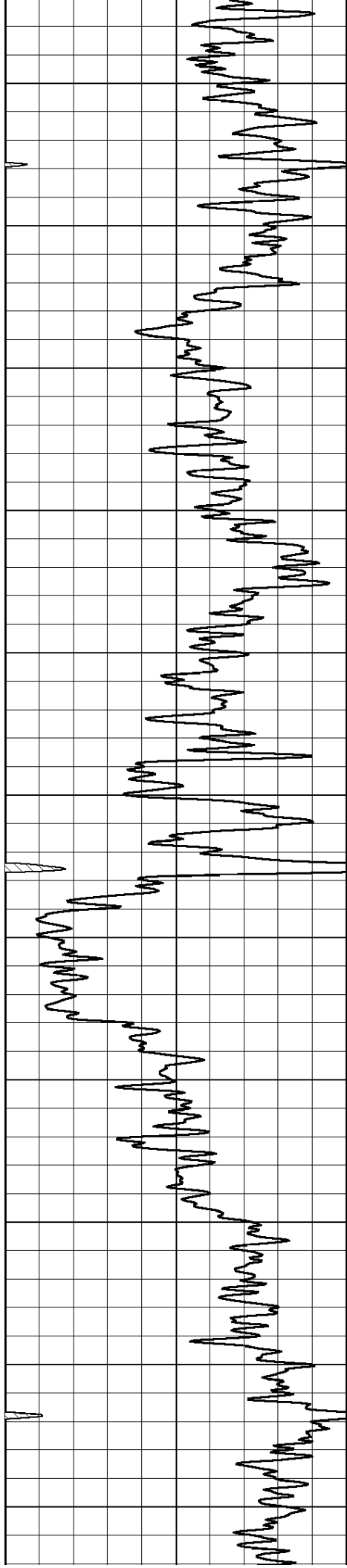
1200

1250

1300

1350





1400

1450

1500

1550

1600

1650

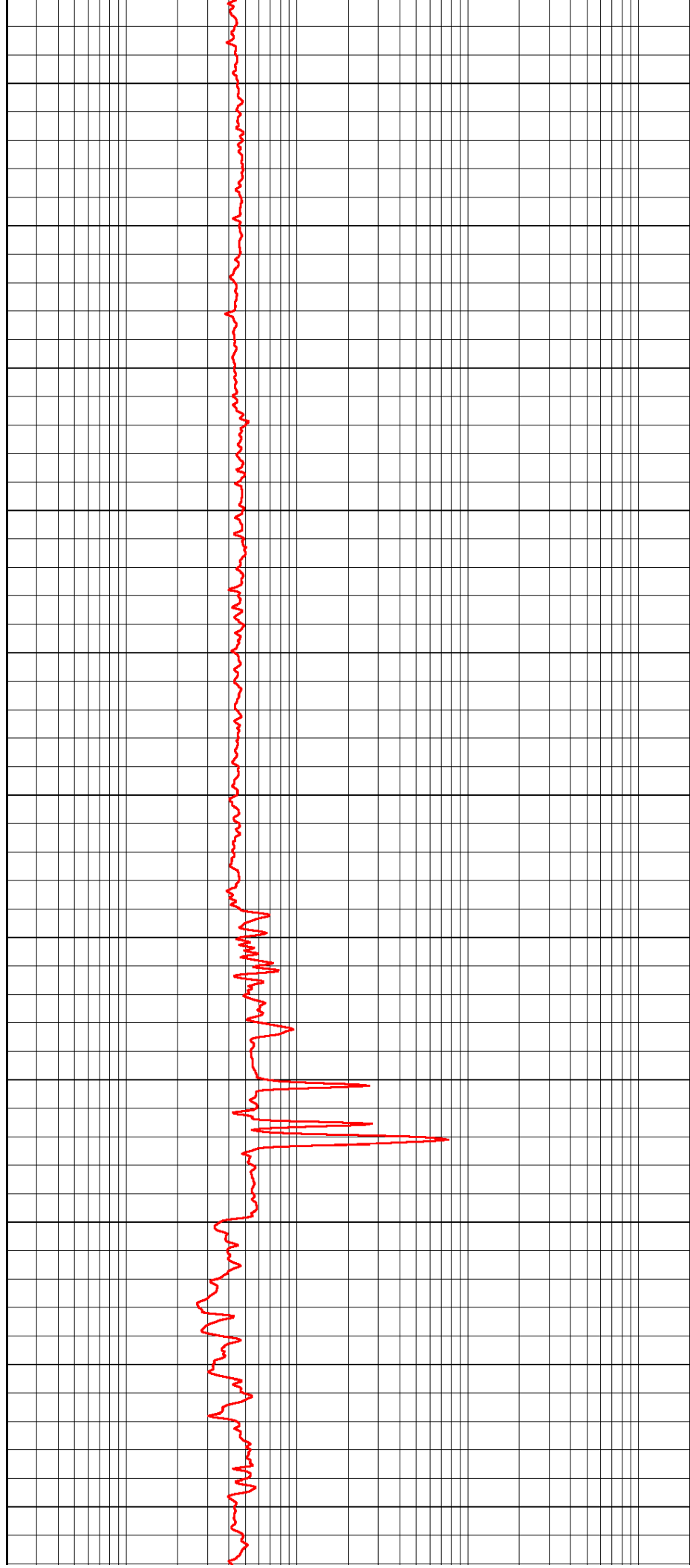
1700

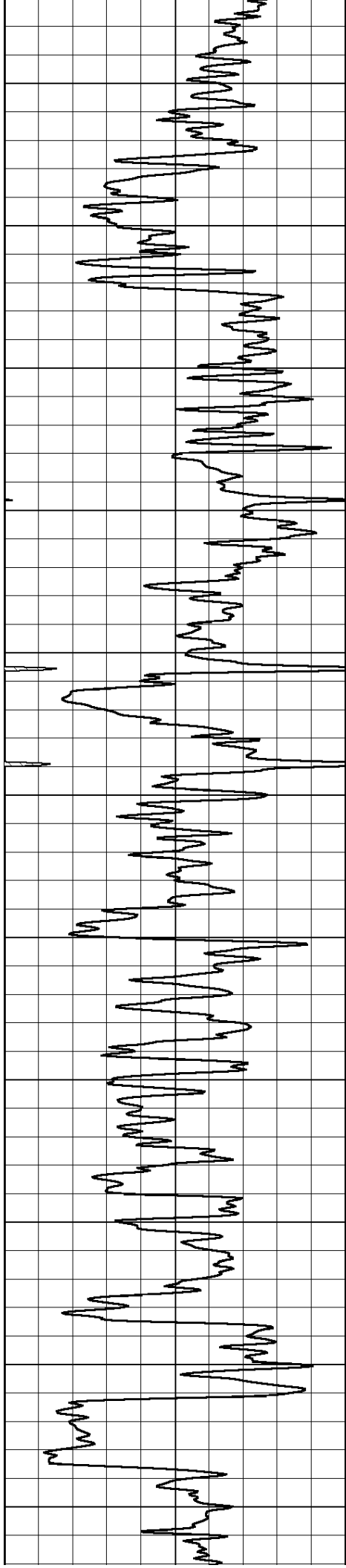
1750

1800

1850

1900





1950

2000

2050

2100

2150

2200

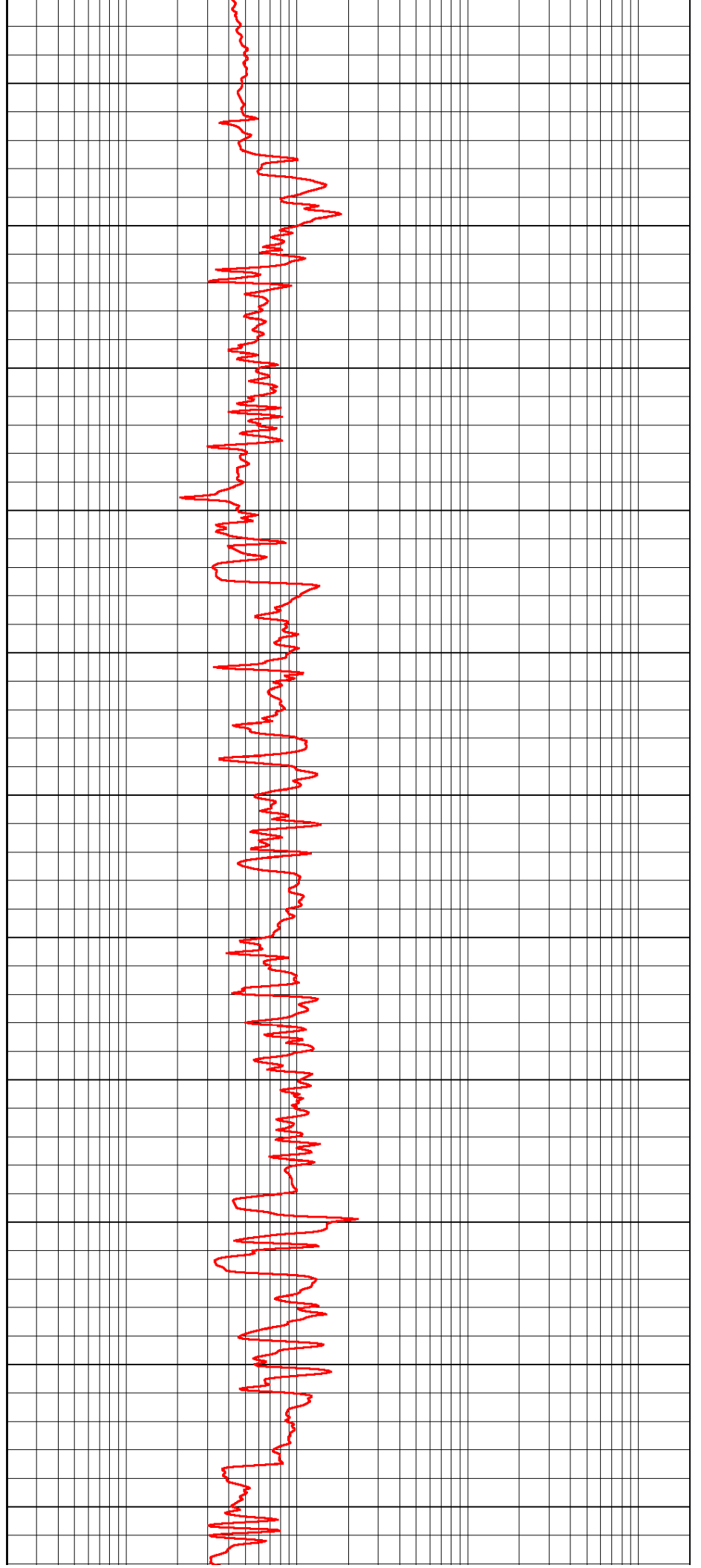
2250

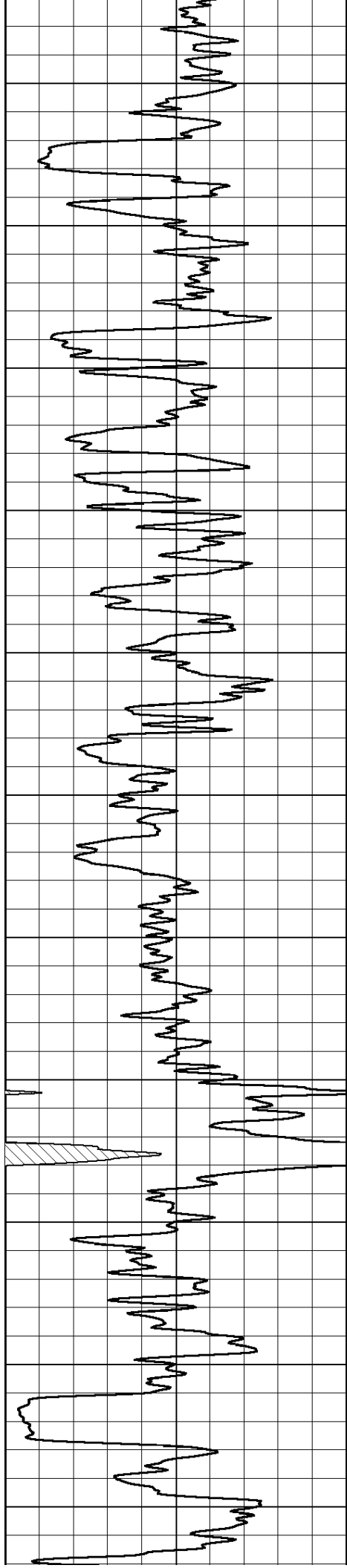
2300

2350

2400

2450





2500

2550

2600

2650

2700

2750

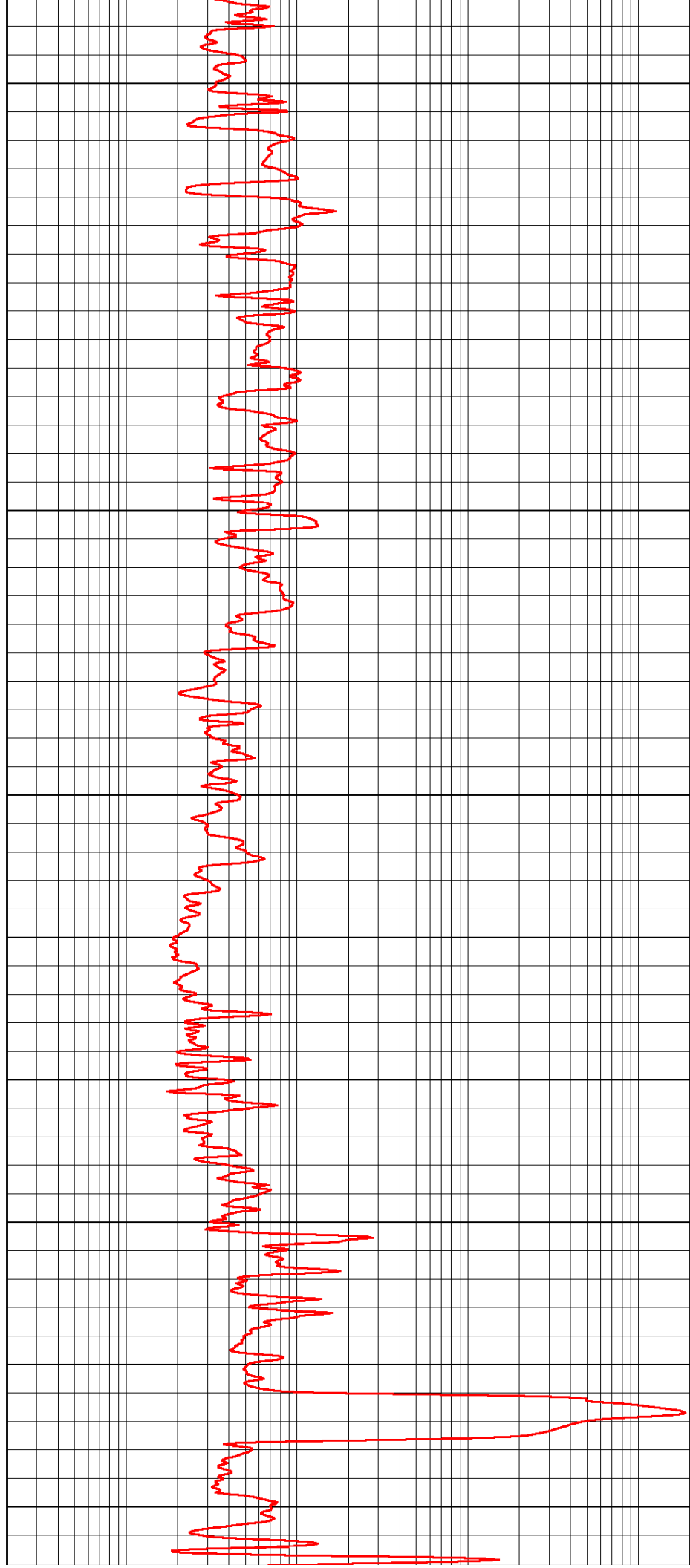
2800

2850

2900

2950

3000



2500

2550

2600

2650

2700

2750

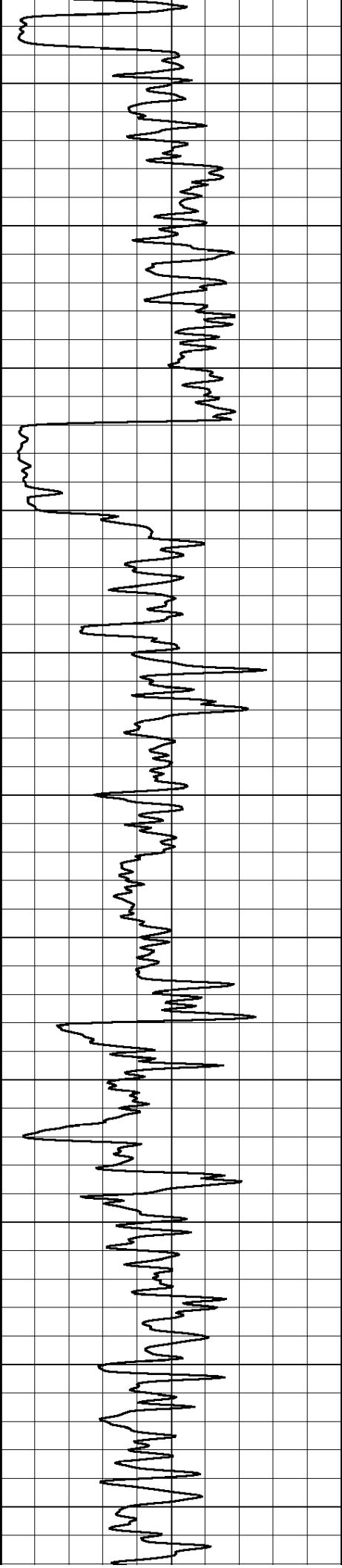
2800

2850

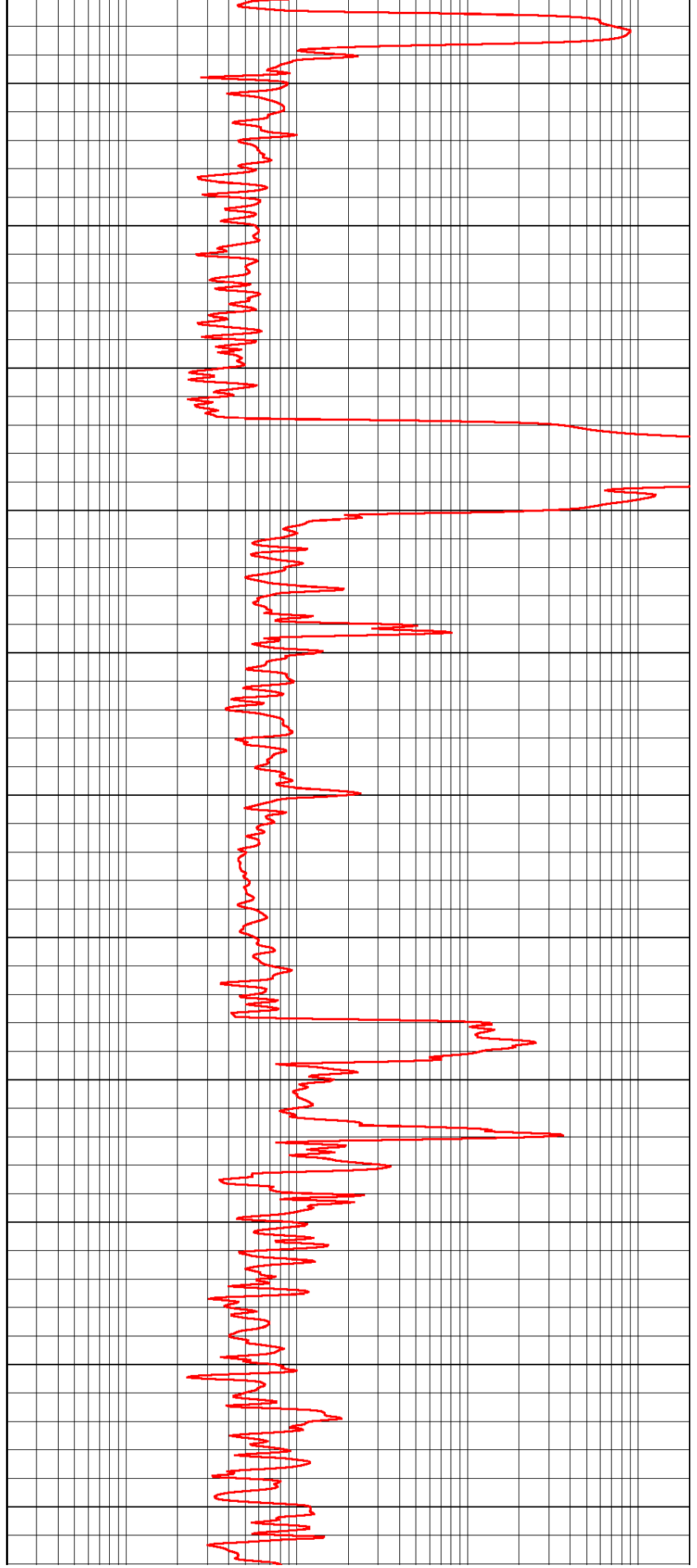
2900

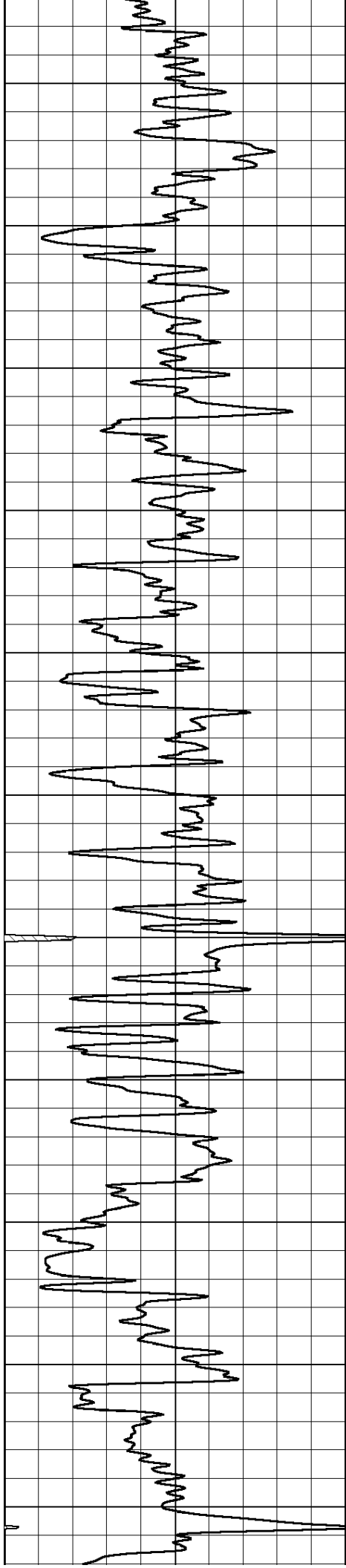
2950

3000



3050
3100
3150
3200
3250
3300
3350
3400
3450
3500
3550





3600

3650

3700

3750

3800

3850

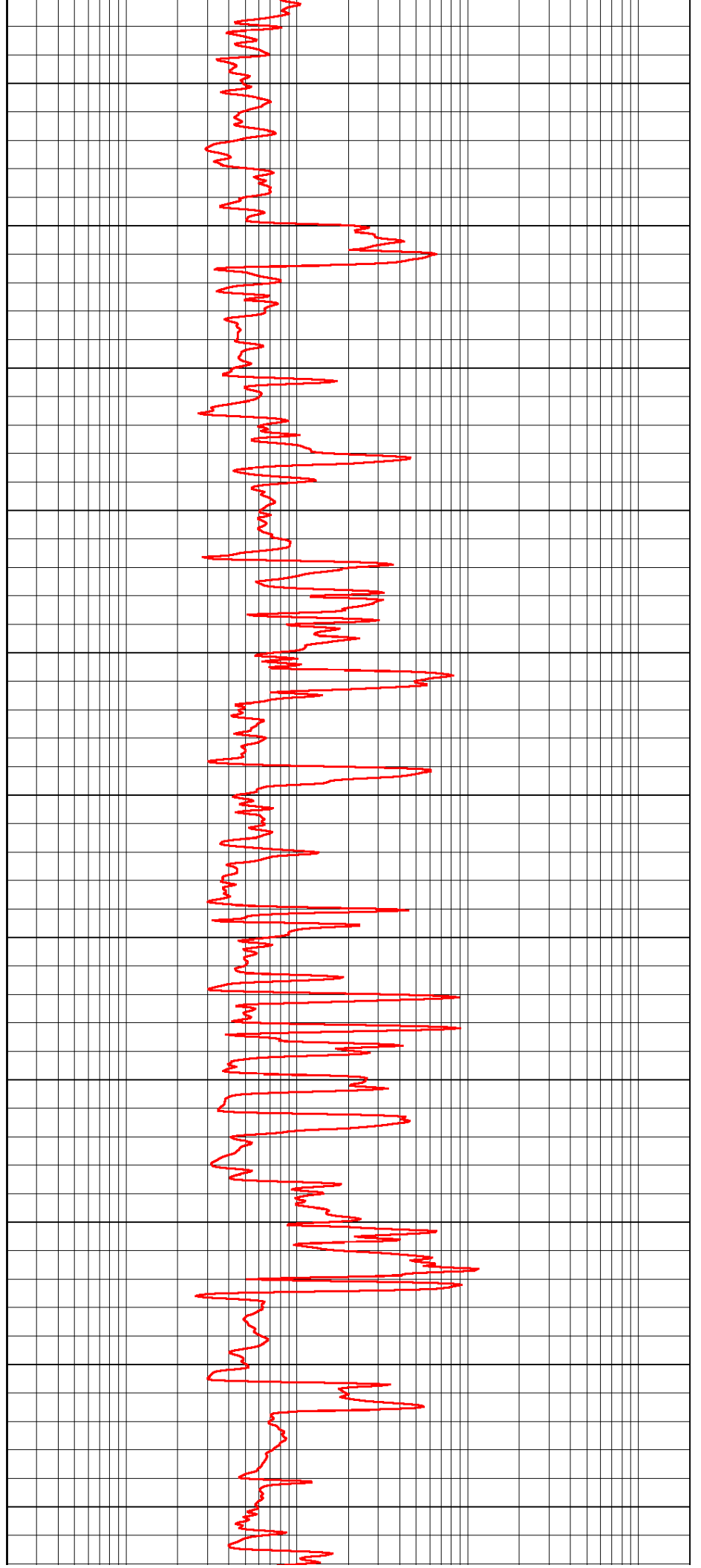
3900

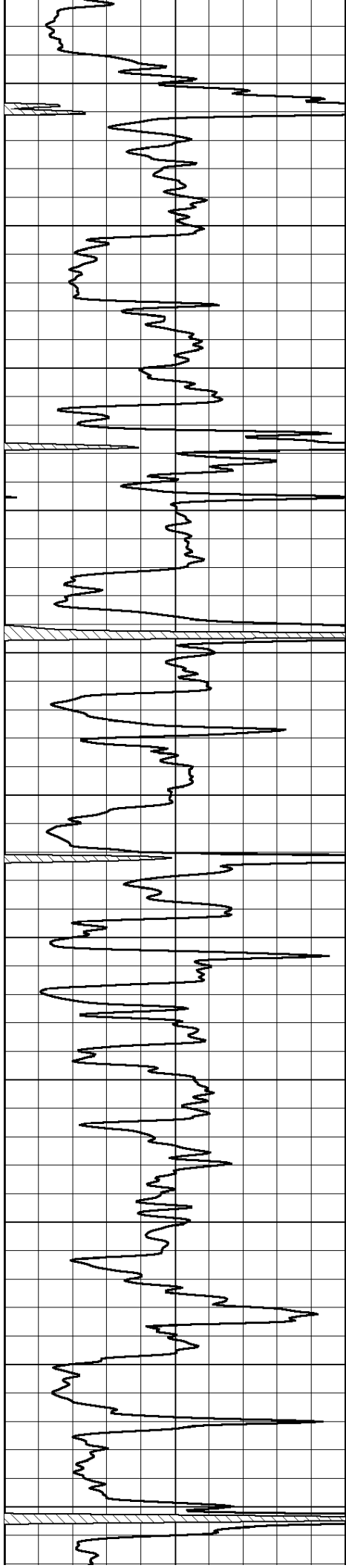
3950

4000

4050

4100





4150

4200

4250

4300

4350

4400

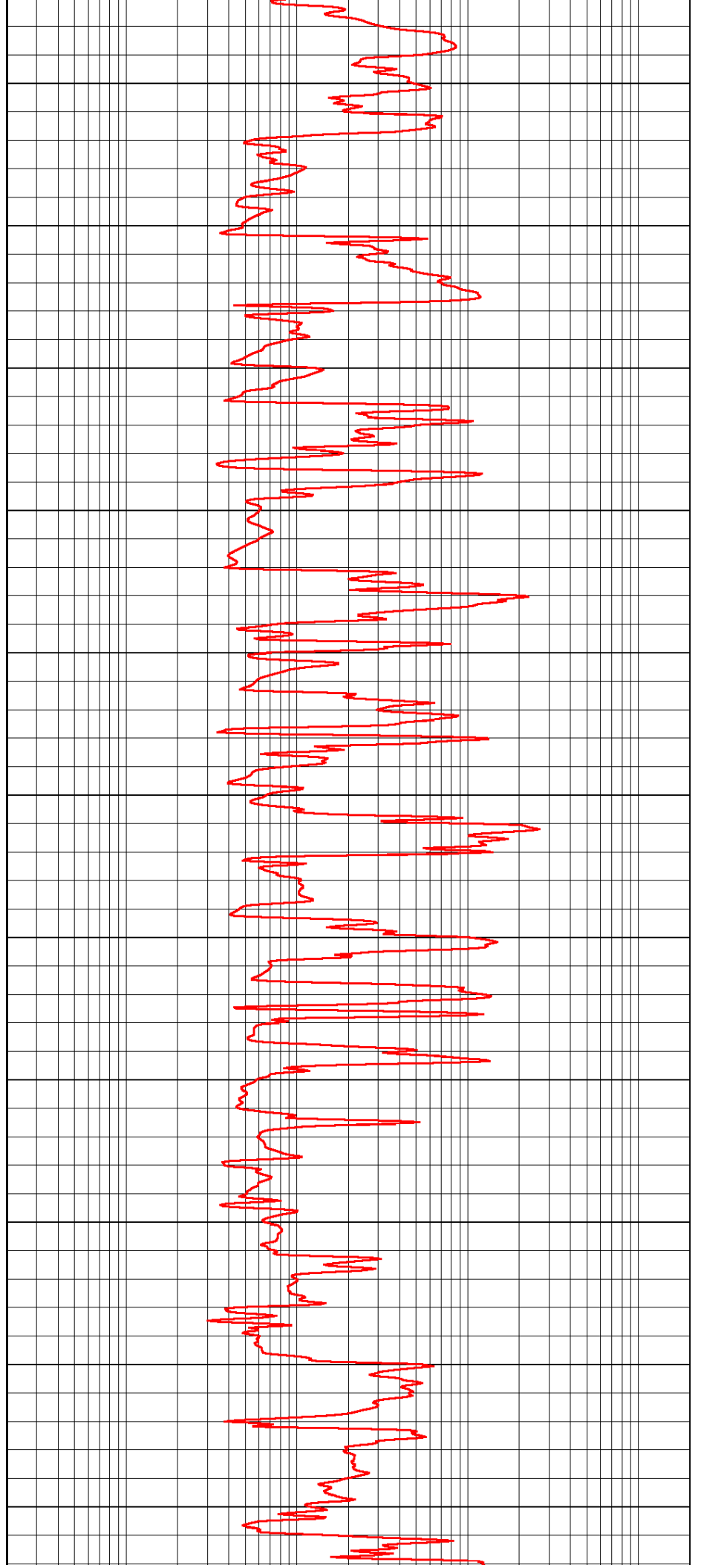
4450

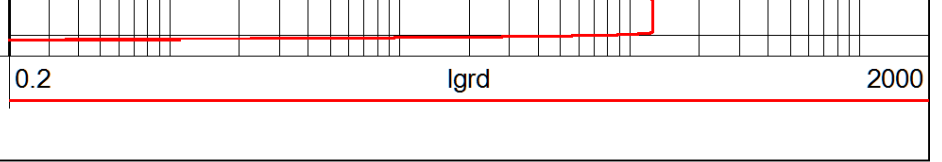
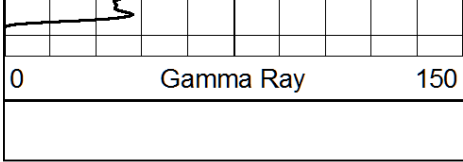
4500

4550

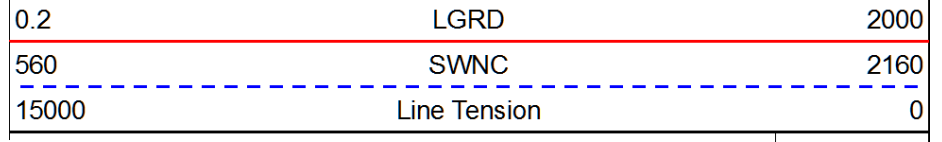
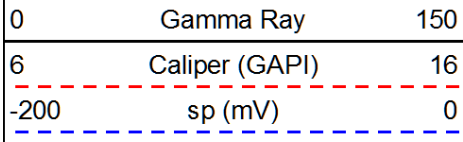
4600

4650

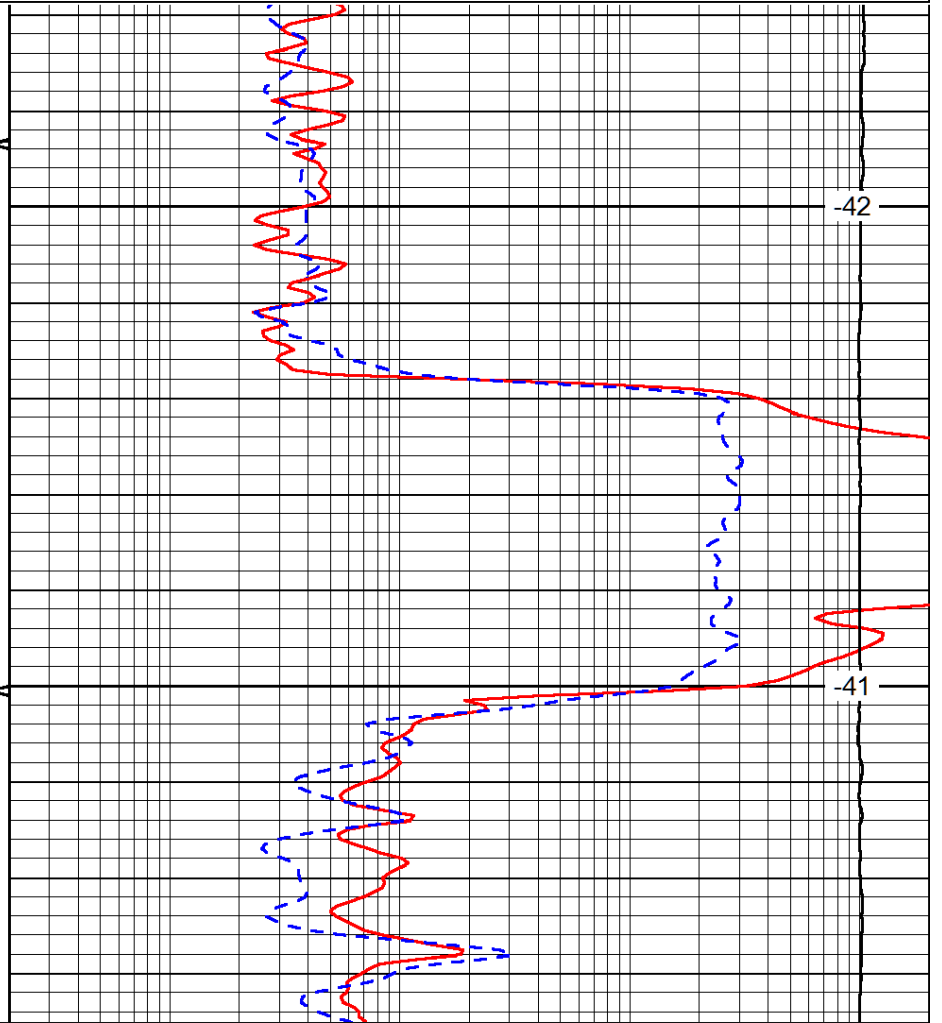
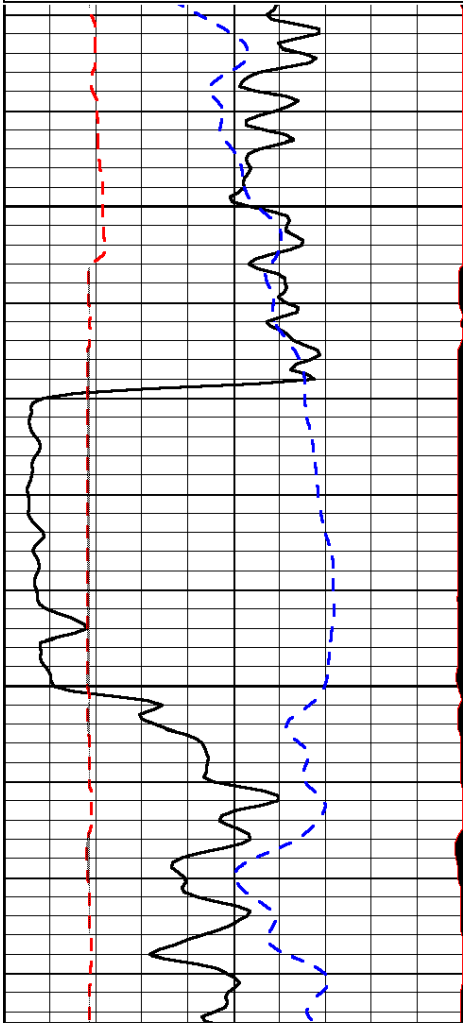




Database File: berexco_moser_4_32hd.db
 Dataset Pathname: rag/berrag
 Presentation Format: rag
 Dataset Creation: Mon Nov 03 16:21:06 2014
 Charted by: Depth in Feet scaled 1:240



-200 sp (mV) 0
 15000 Line Tension 0
 LSPD

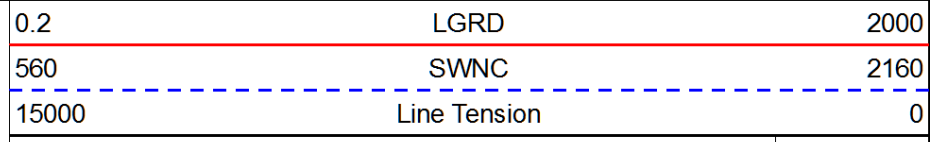
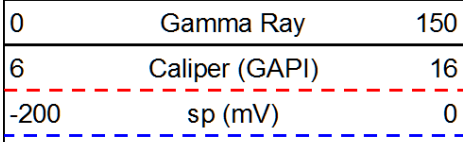


3150

-42

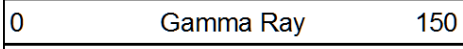
3200

-41



-200 sp (mV) 0
 15000 Line Tension 0
 LSPD

Database File: berexco_moser_4_32hd.db
 Dataset Pathname: rag/berrag
 Presentation Format: rag
 Dataset Creation: Mon Nov 03 16:21:06 2014
 Charted by: Depth in Feet scaled 1:240



6 Caliper (GAPI) 16
-200 sp (mV) 0

560 SWNC 2160
15000 Line Tension 0

LSPD

