



**COMPLETION
& PRODUCTION
SERVICES CO.**

**SONIC
LOG**

Company BLURIDGE PETROLEUM CORP.
Well JUENEMANN #2-5
Field WILDCAT
County NORTON
State KANSAS

Company BLUERIDGE PETROLEUM CORPORATION
Well JUENEMANN #2-5
Field WILDCAT
County NORTON State KANSAS

Location: API # : 15-137-20714-0000
1370' FSL & 535' FEL
SW - SE - NE - SE
SEC 5 TWP 3S RGE 24W
Permanent Datum GROUND LEVEL Elevation 2435
Log Measured From KELLY BUSHING 5' A.G.L.
Drilling Measured From KELLY BUSHING
Other Services
CDL/CNL/PE
DIL/MEL
Elevation
K.B. 2440
D.F. 2438
G.L. 2435

Date	10/29/14
Run Number	TWO
Depth Driller	3780
Depth Logger	3782
Bottom Logged Interval	3774
Top Log Interval	200
Casing Driller	8 5/8" @ 260'
Casing Logger	258
Bit Size	7 7/8"
Type Fluid in Hole	CHEMICAL MUD
Density / Viscosity	9.4/53
pH / Fluid Loss	10.0/6.0
Source of Sample	FLOWLINE
Rim @ Meas. Temp	1.50 @ 70F
Rmf @ Meas. Temp	1.13 @ 70F
Rmc @ Meas. Temp	1.80 @ 70F
Source of Rmf / Rmc	MEASUREMENT
Rim @ BHT	.921 @ 114F
Time Circulation Stopped	3.5 HOURS
Time Logger on Bottom	3:00 A.M.
Maximum Recorded Temperature	114F
Equipment Number	4854
Location	HAYS, KANSAS
Recorded By	JEFF LUEBBERS
Witnessed By	CLINT MUSGROVE

<<< Fold Here >>>

All interpretations are opinions based on inferences from electrical or other measurements and we cannot and do not guarantee the accuracy or correctness of any interpretation, and we shall not, except in the case of gross or willful negligence on our part, be liable or responsible for any loss, costs, damages, or expenses incurred or sustained by anyone resulting from any interpretation made by any of our officers, agents or employees. These interpretations are also subject to our general terms and conditions set out in our current Price Schedule.

Comments

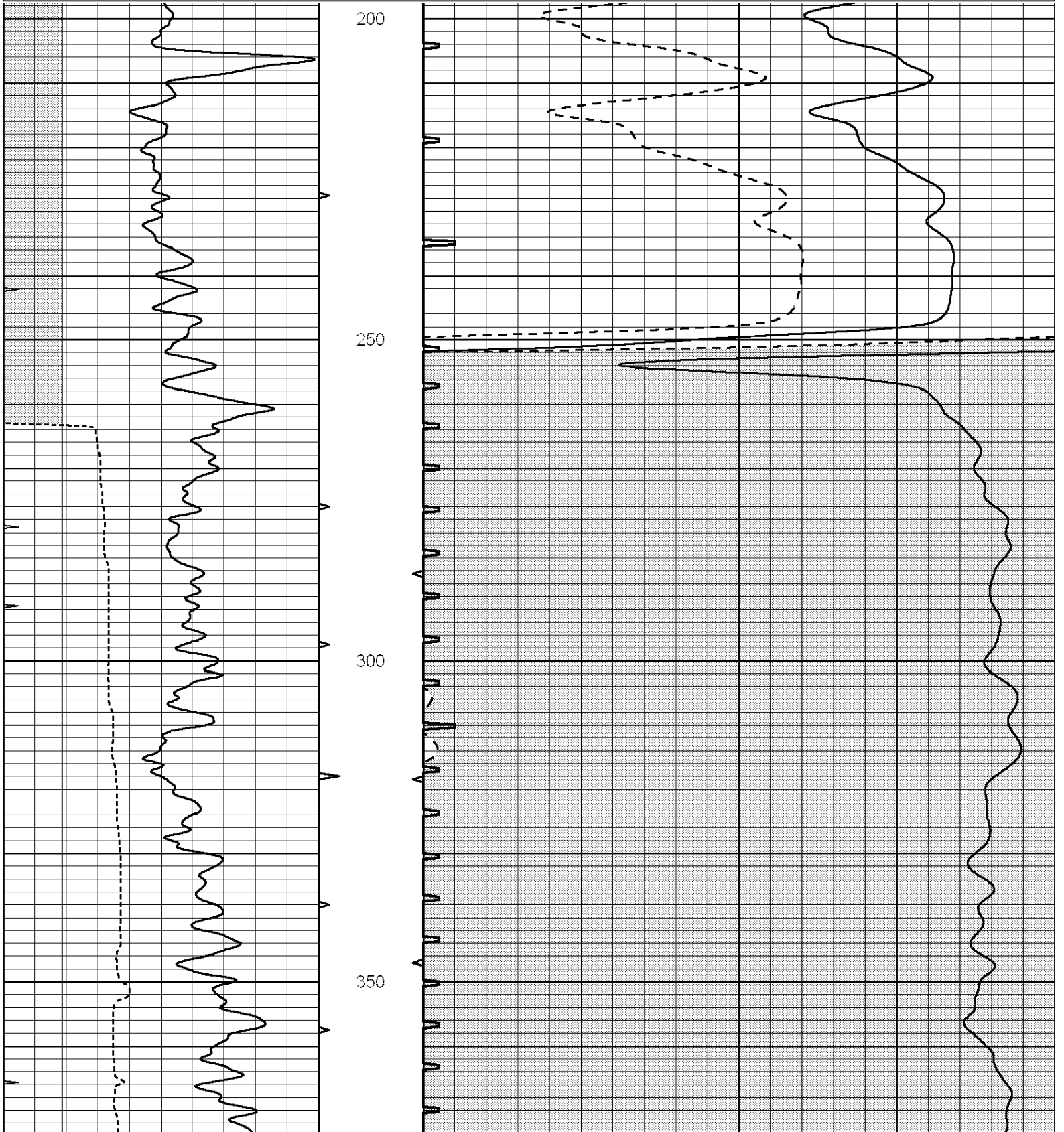
THANK YOU FOR USING "NABORS" HAYS, KANSAS (785) 628-6395
DIRECTIONS
NORTON, KS., 6W. ON HWY 36, 1/2S., W. INTO

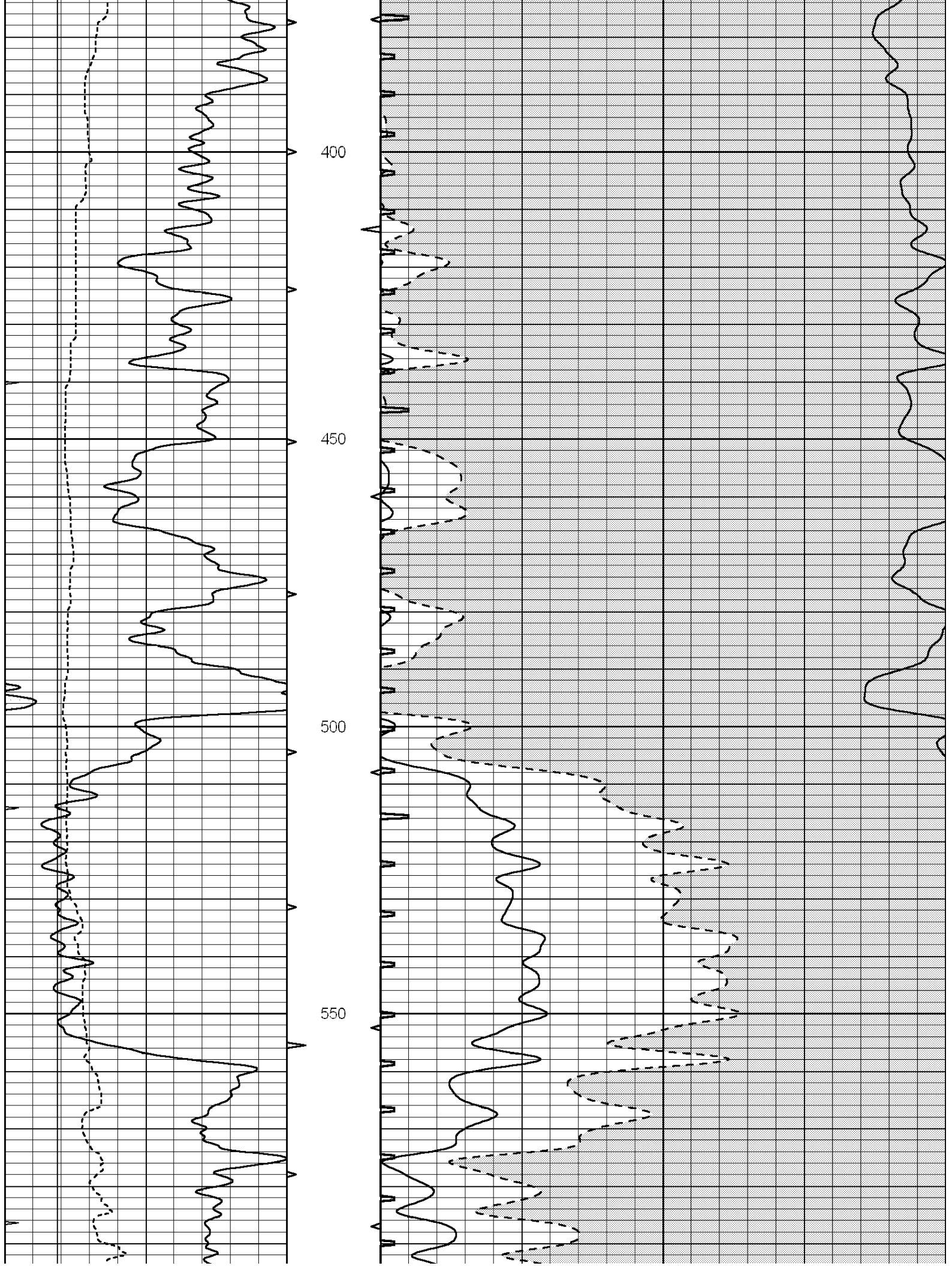


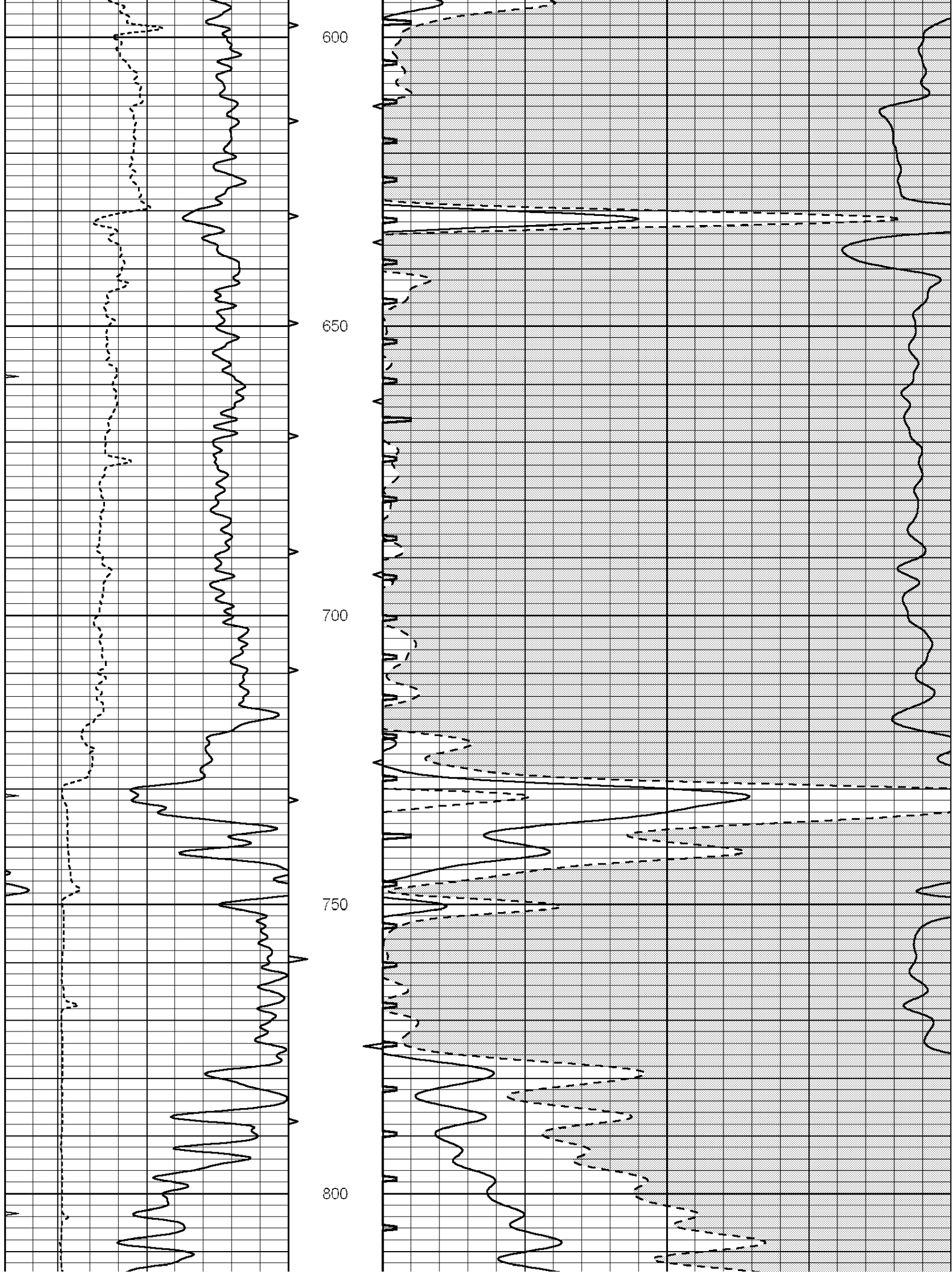
MAIN SECTION

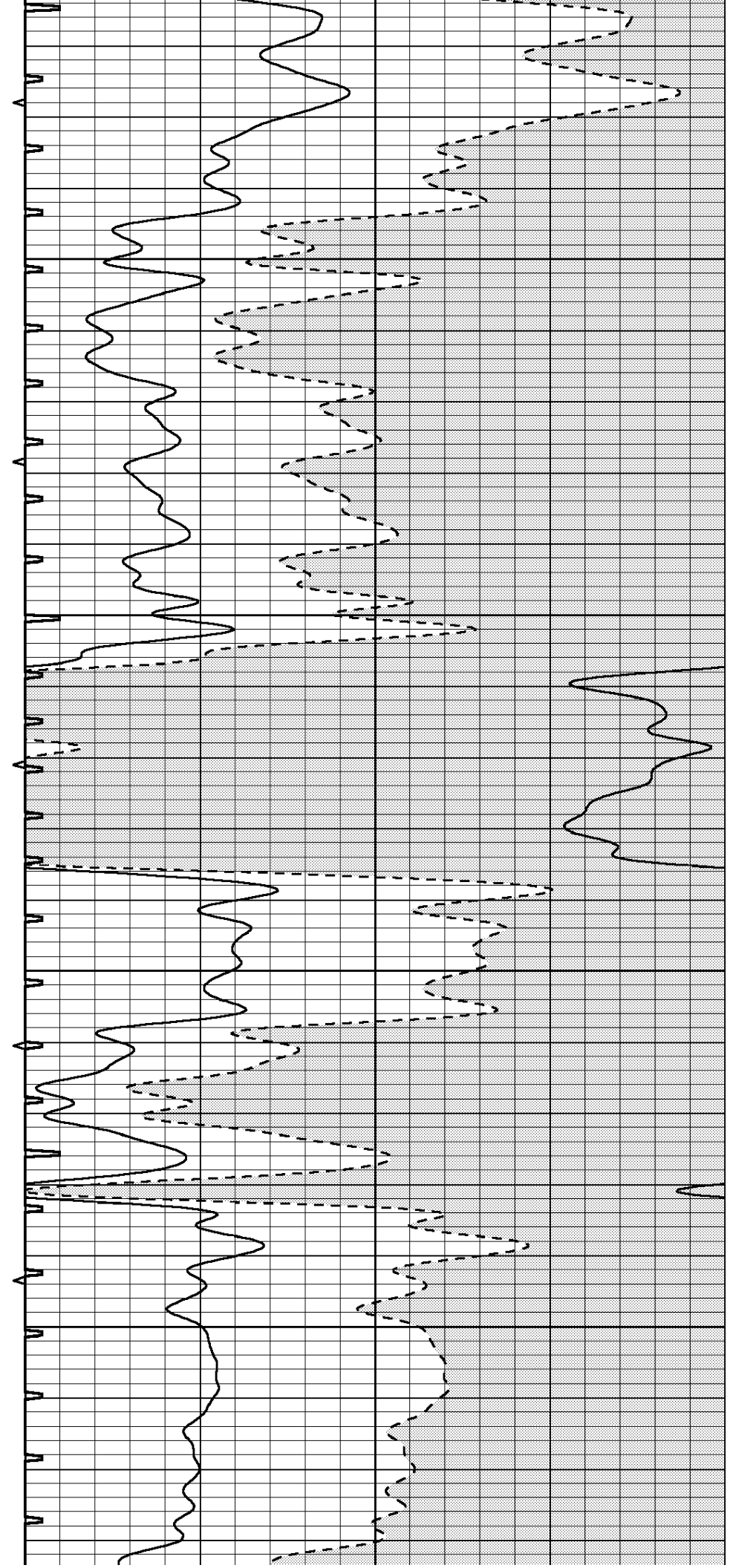
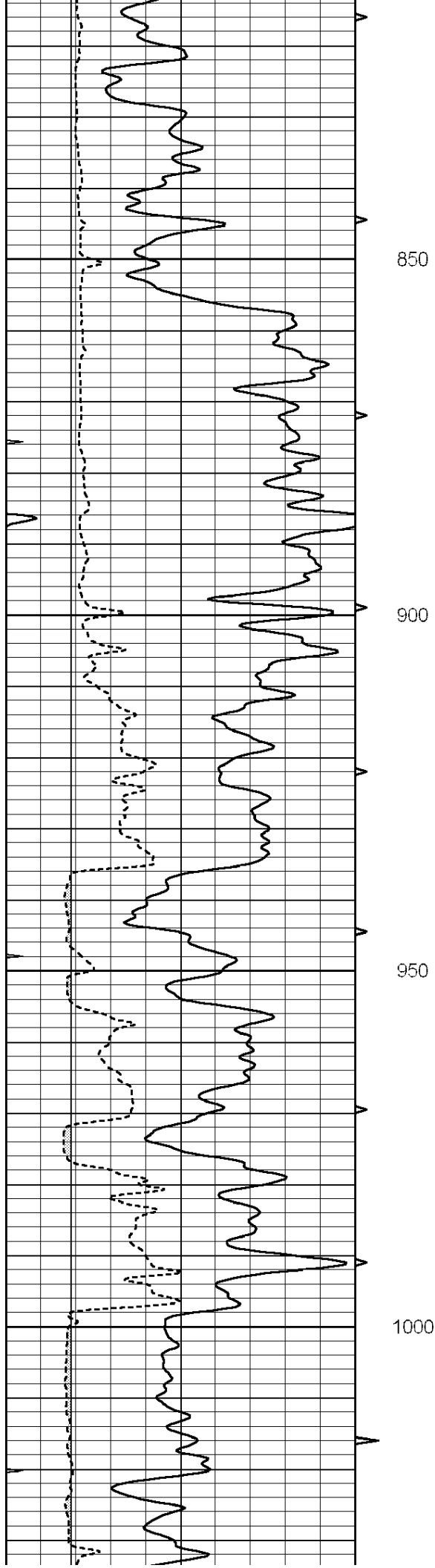
Database File: 25904pe.db
 Dataset Pathname: pass6.3
 Presentation Format: slt
 Dataset Creation: Wed Oct 29 06:24:30 2014 by Calc SOC 120430
 Charted by: Depth in Feet scaled 1:240

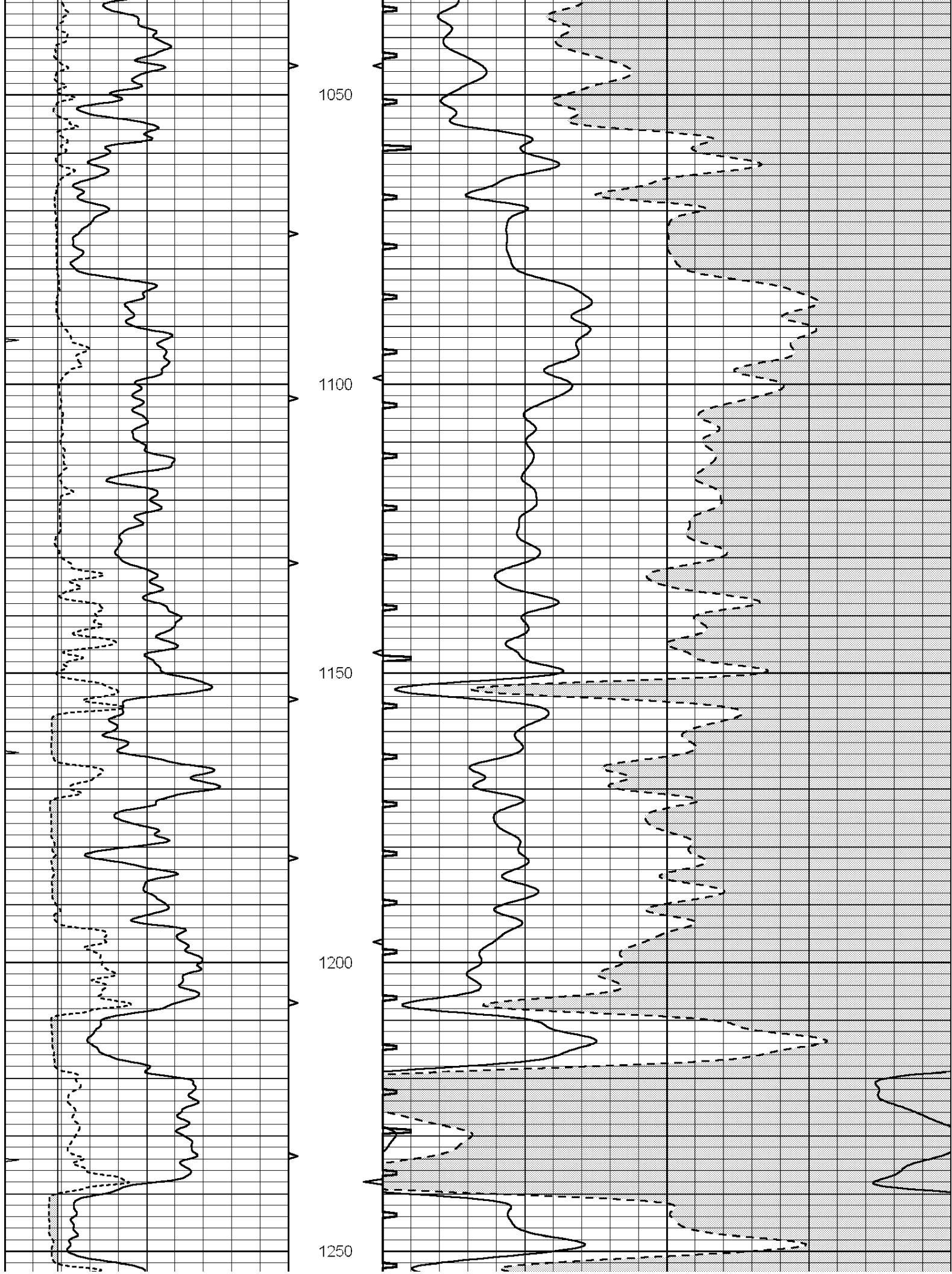
0	GAMMA RAY (GAPI)	150	ABHV	140	DELTA TIME (usec/ft)	40
6	CALIPER (in)	16	10 (ft3)	0	30	SONIC POROSITY (pu)
0	MINMK	20	TBHV	0	ITT (msec)	20
			0 (ft3)	10		

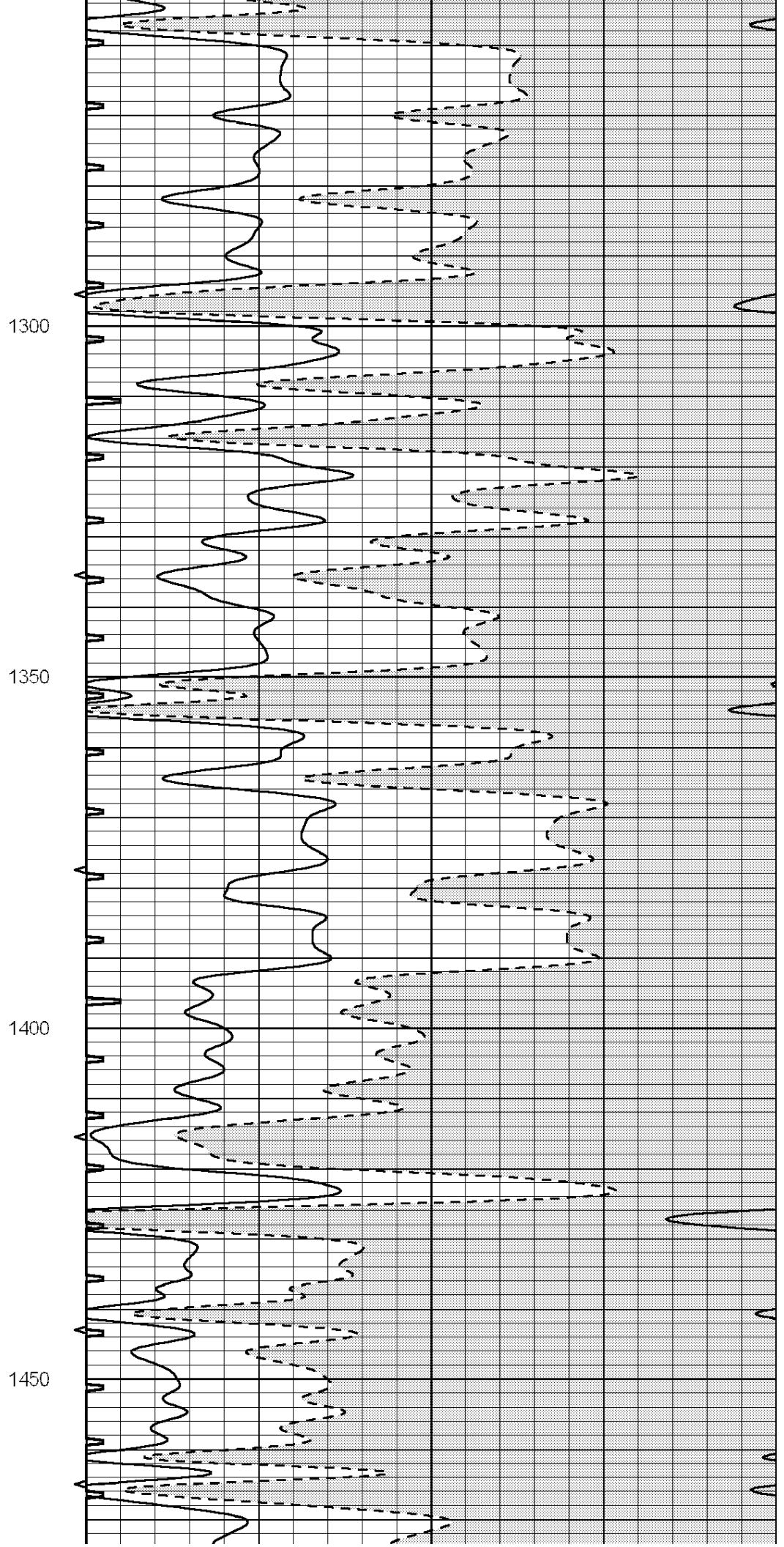
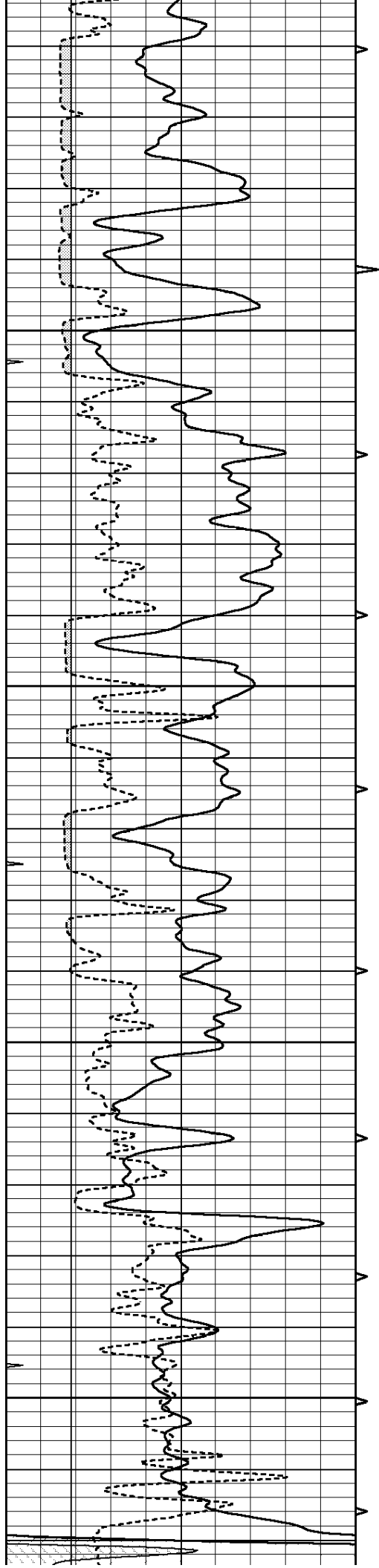


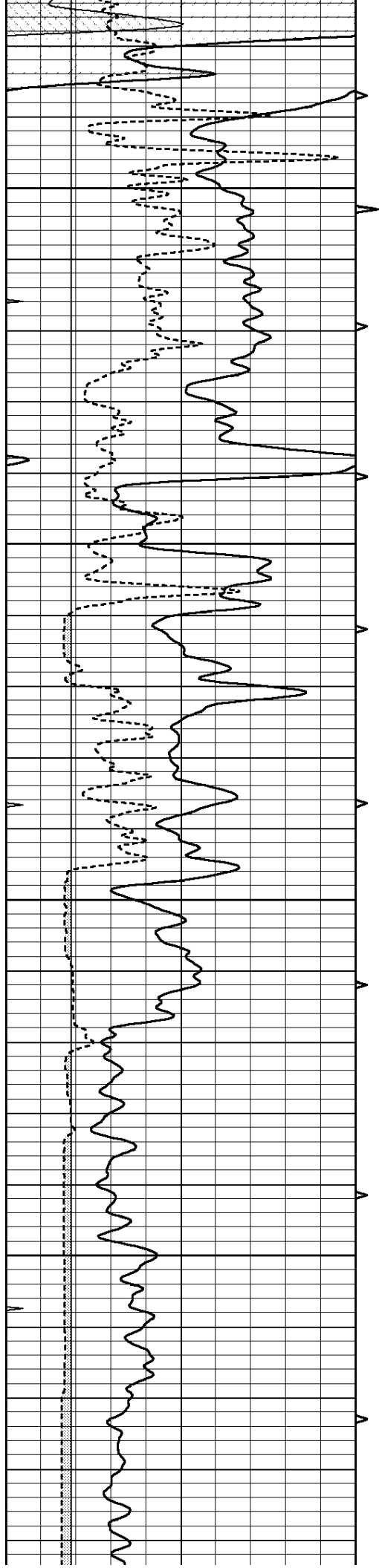










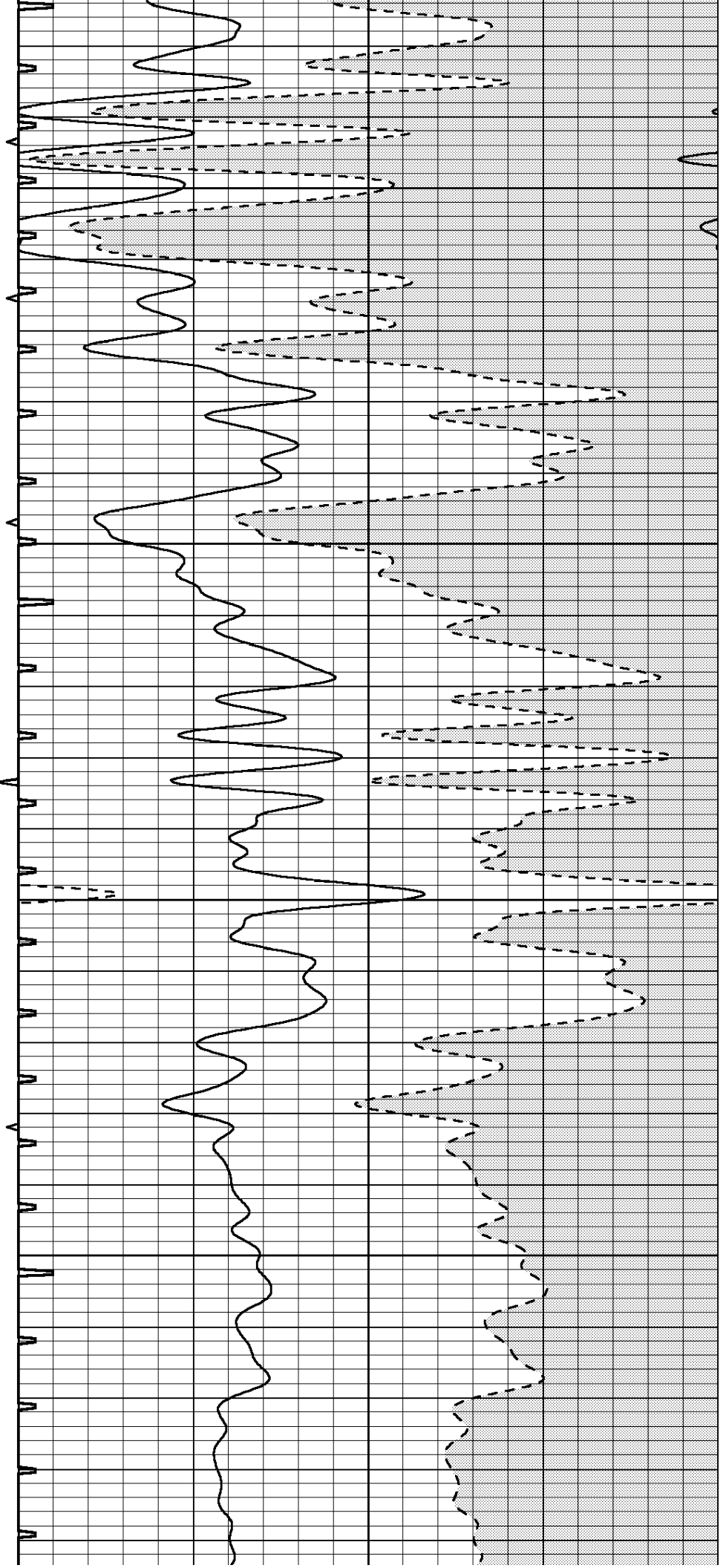


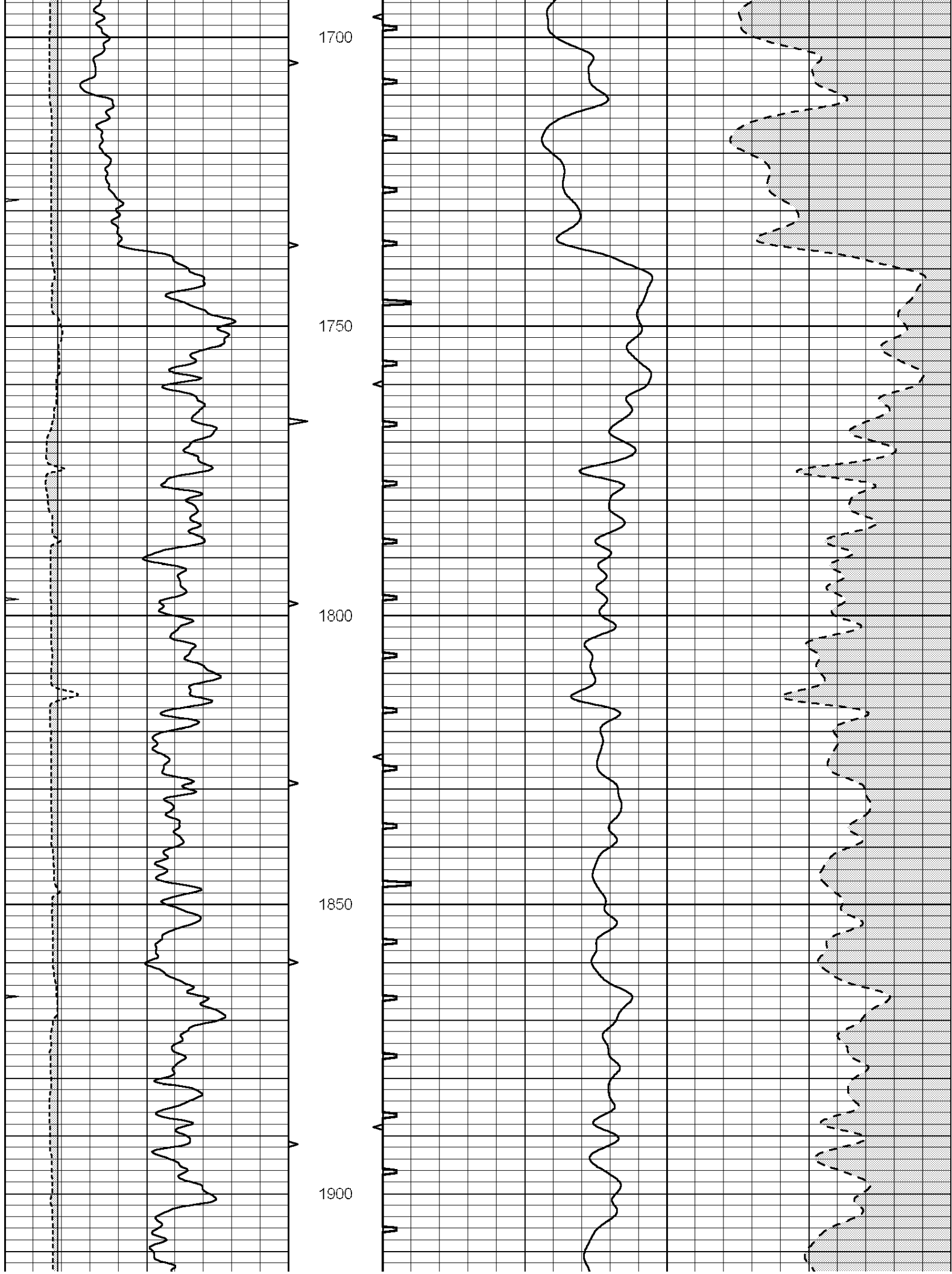
1500

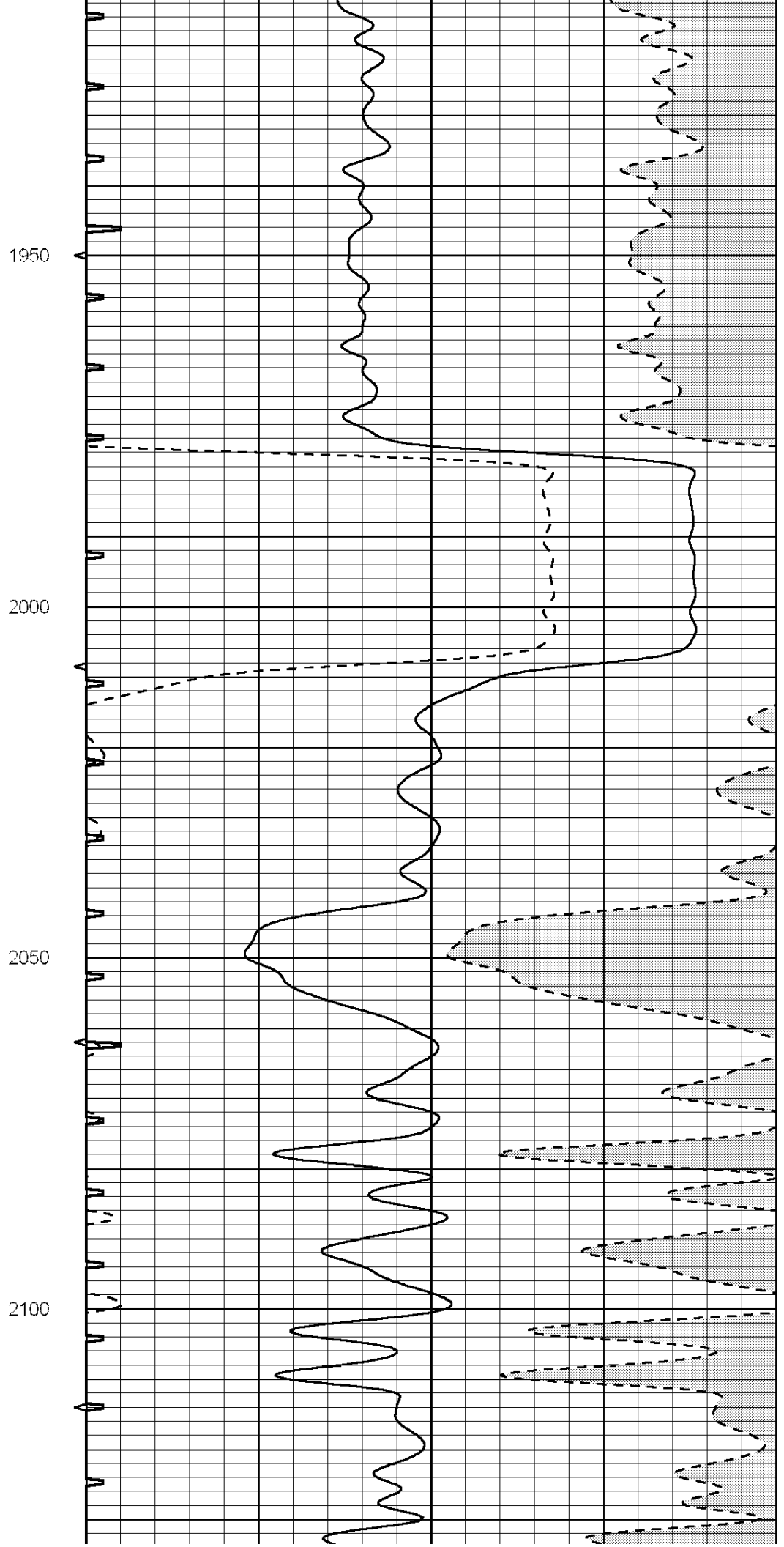
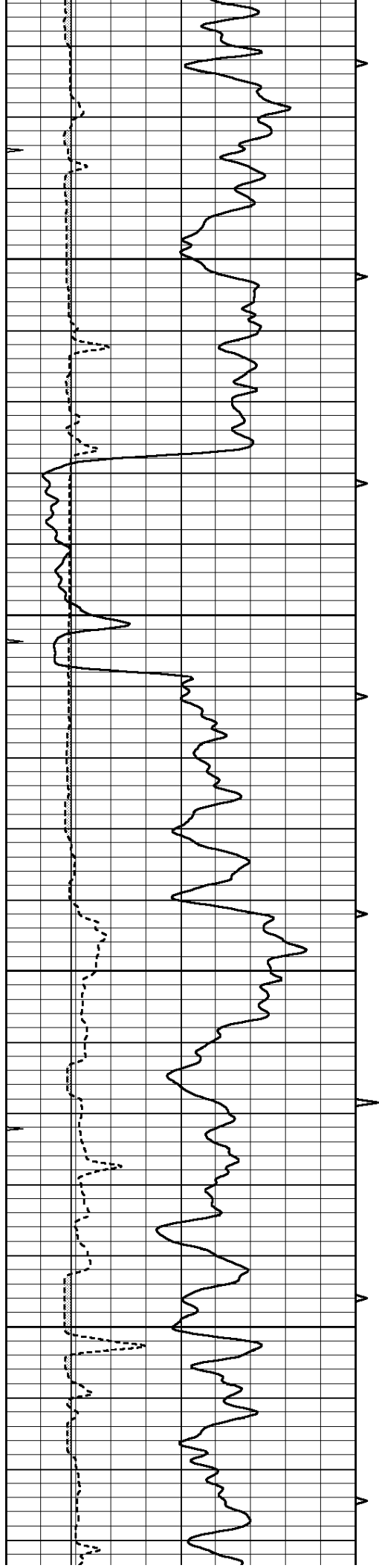
1550

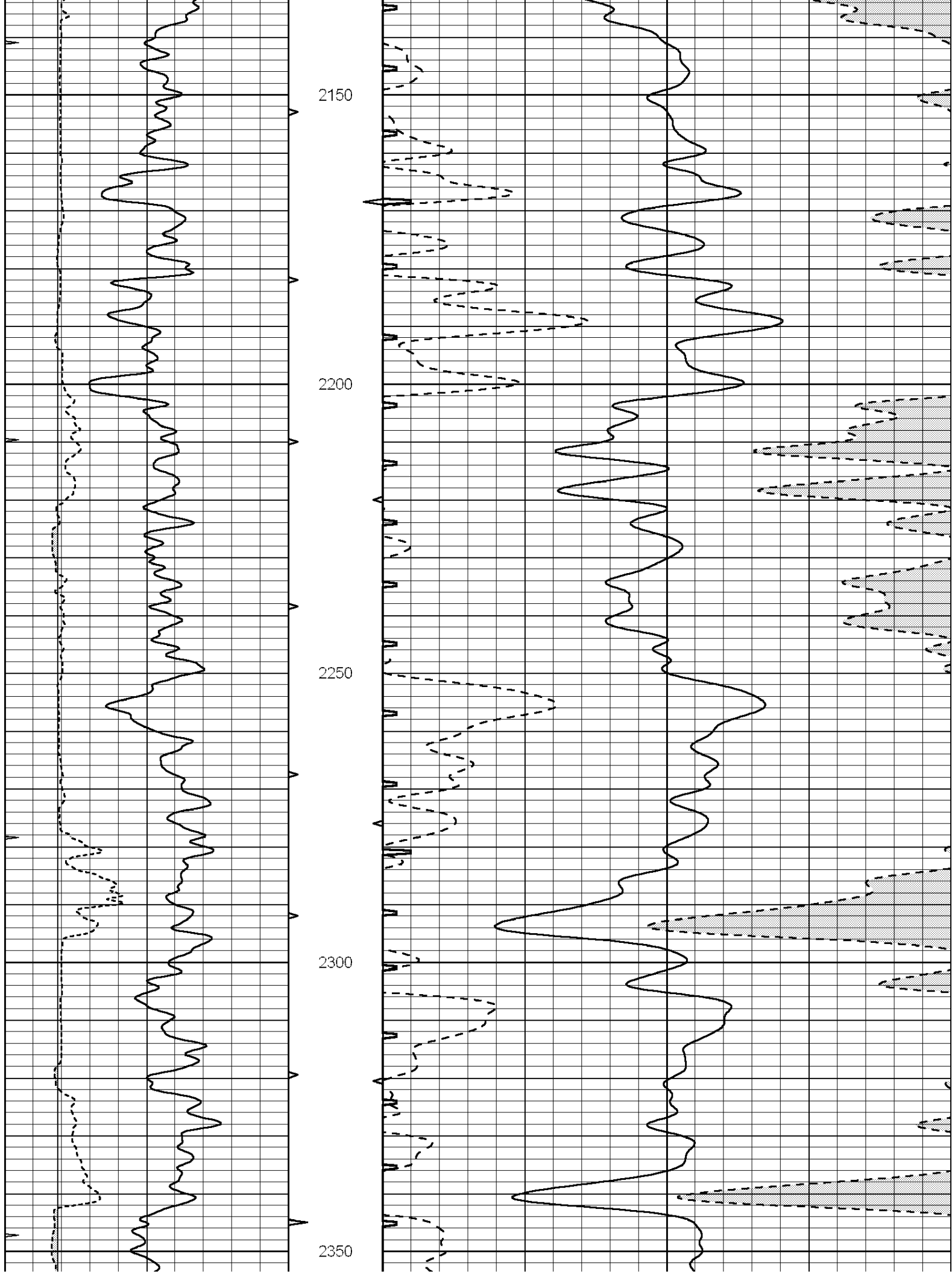
1600

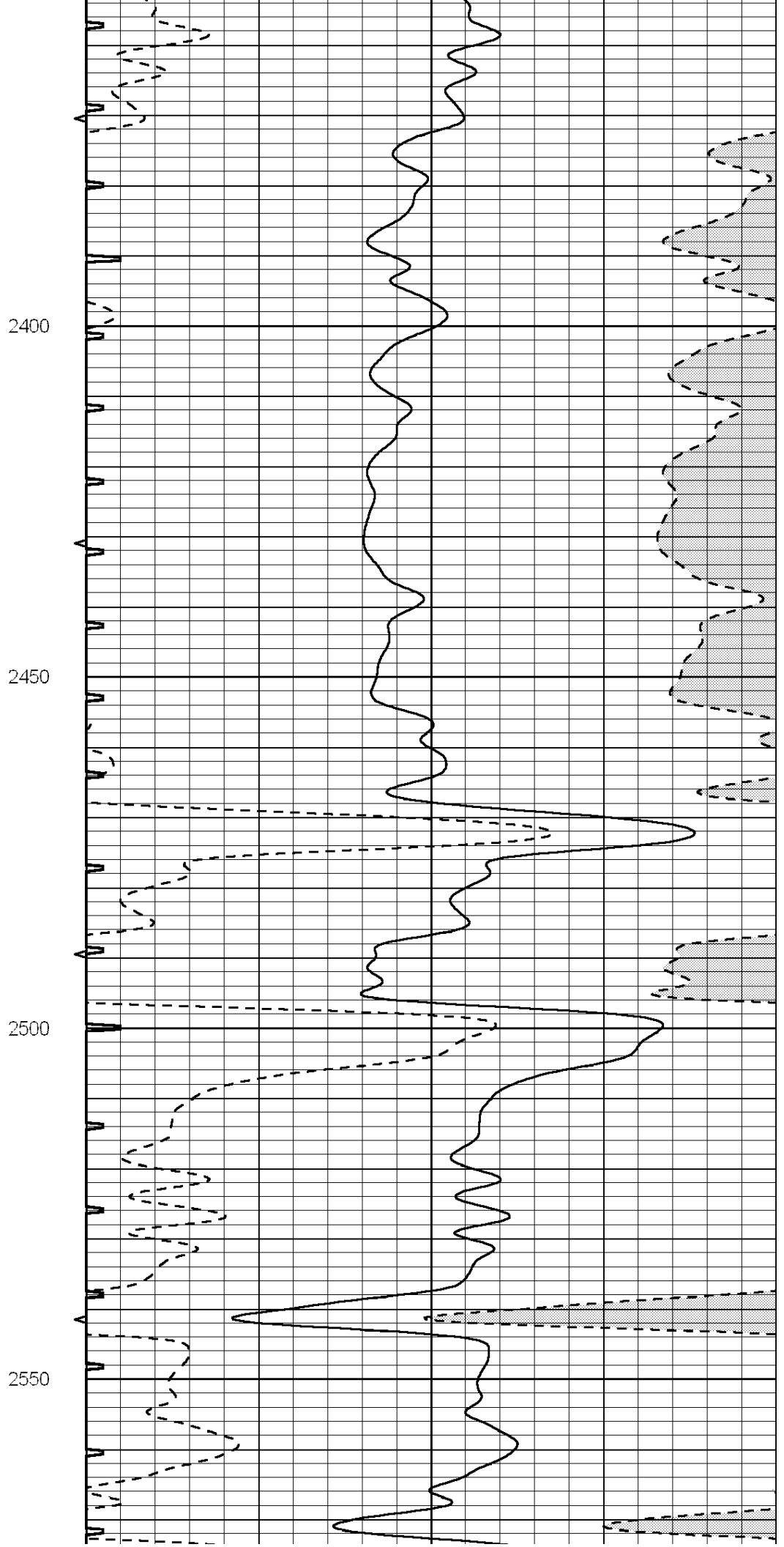
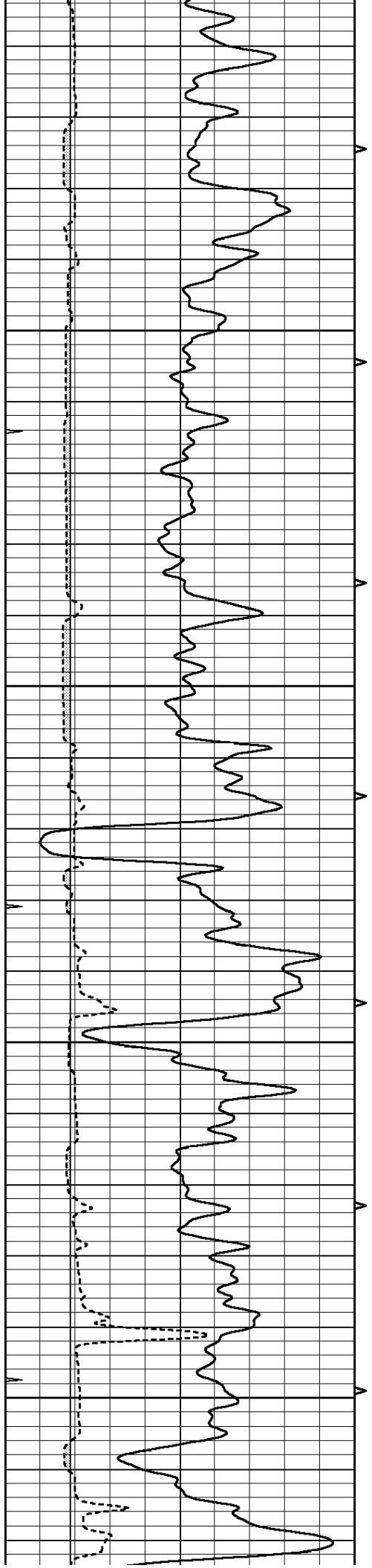
1650

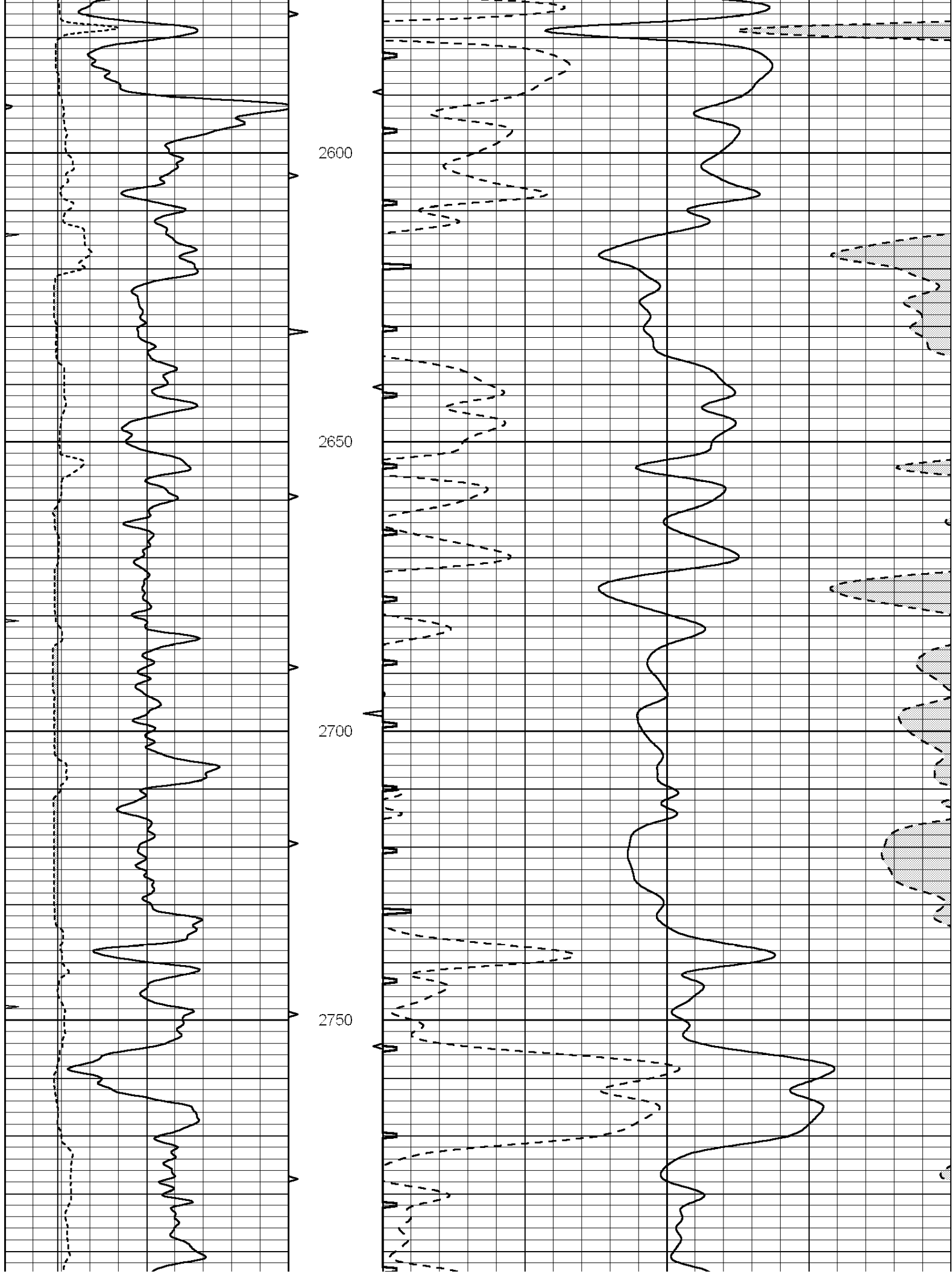


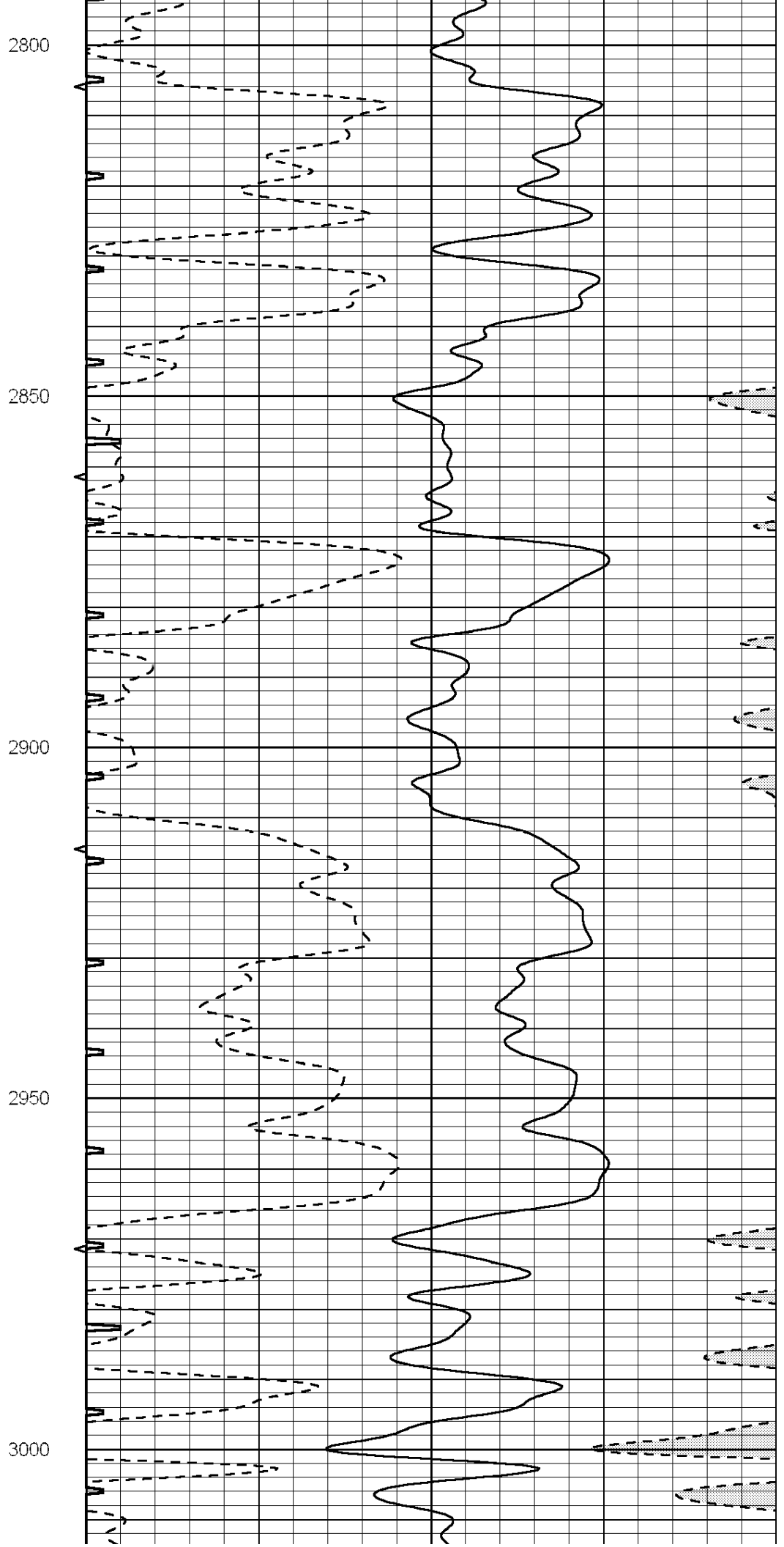
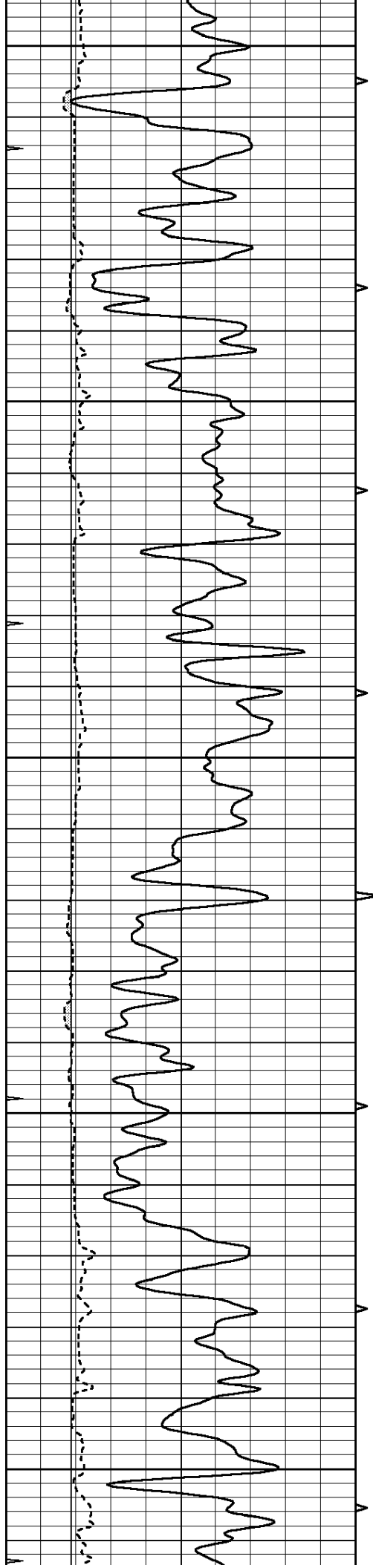


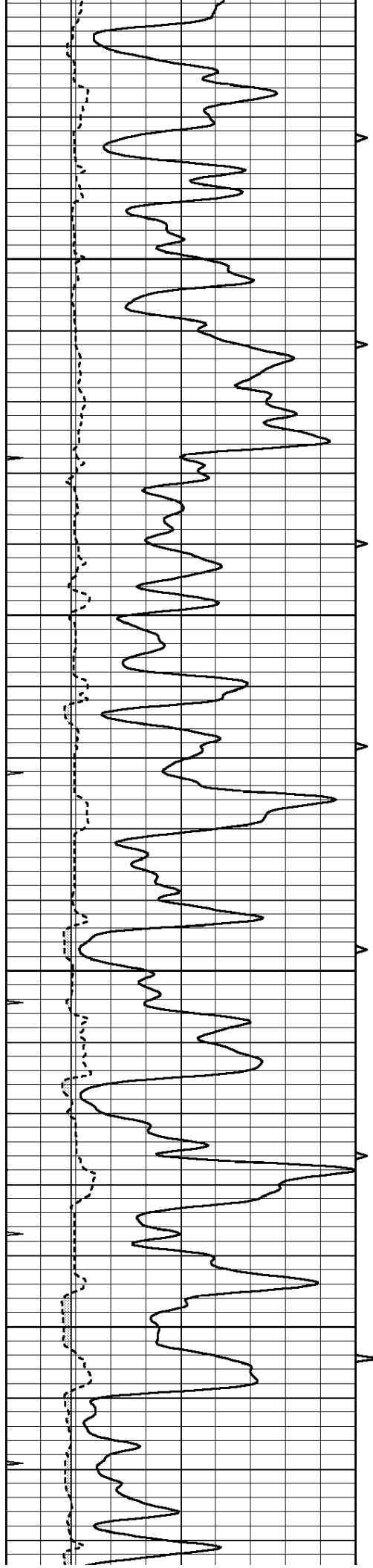










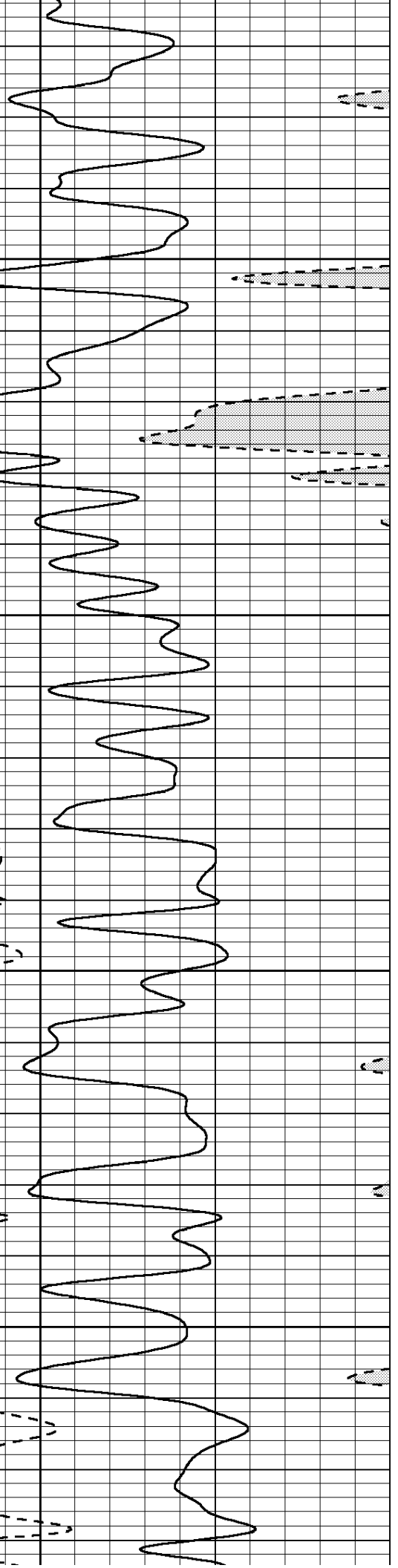
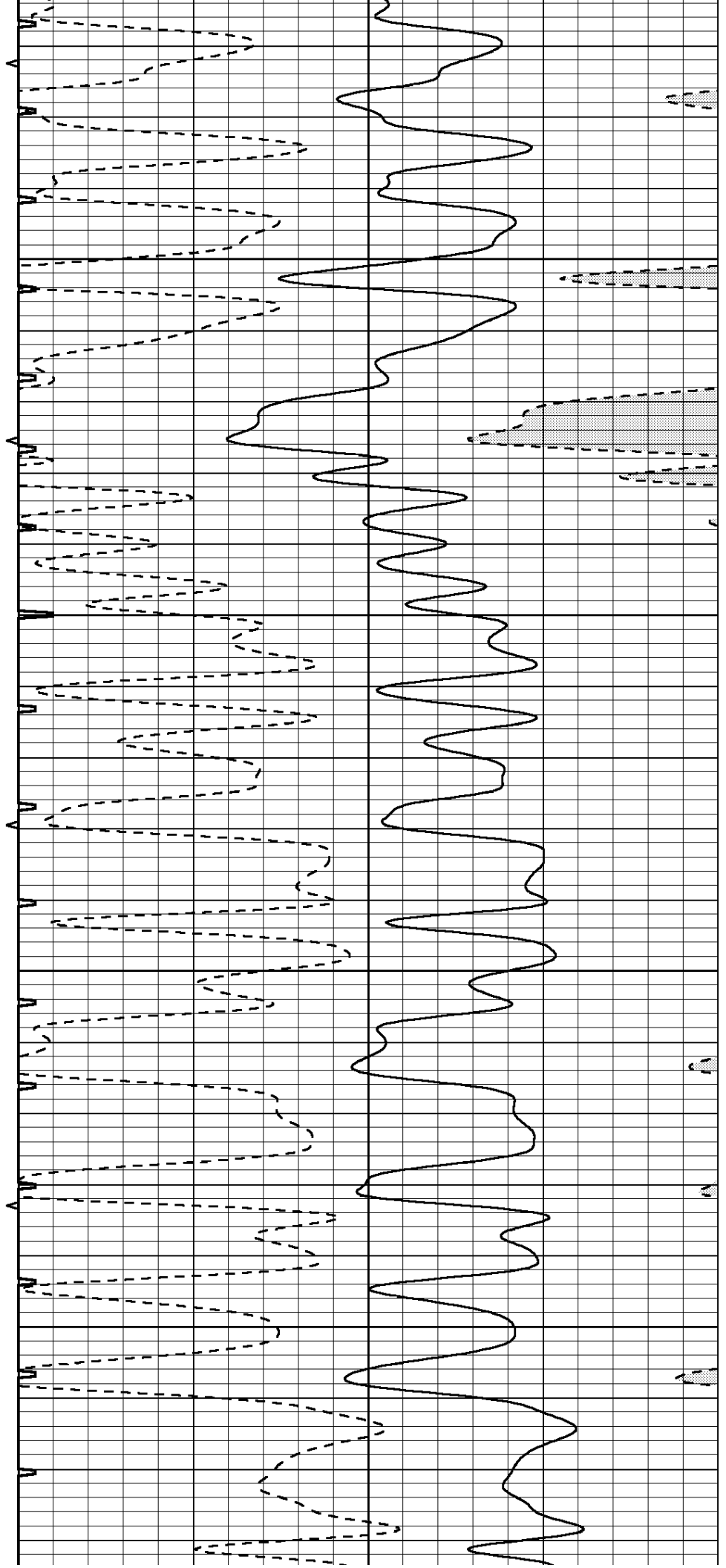


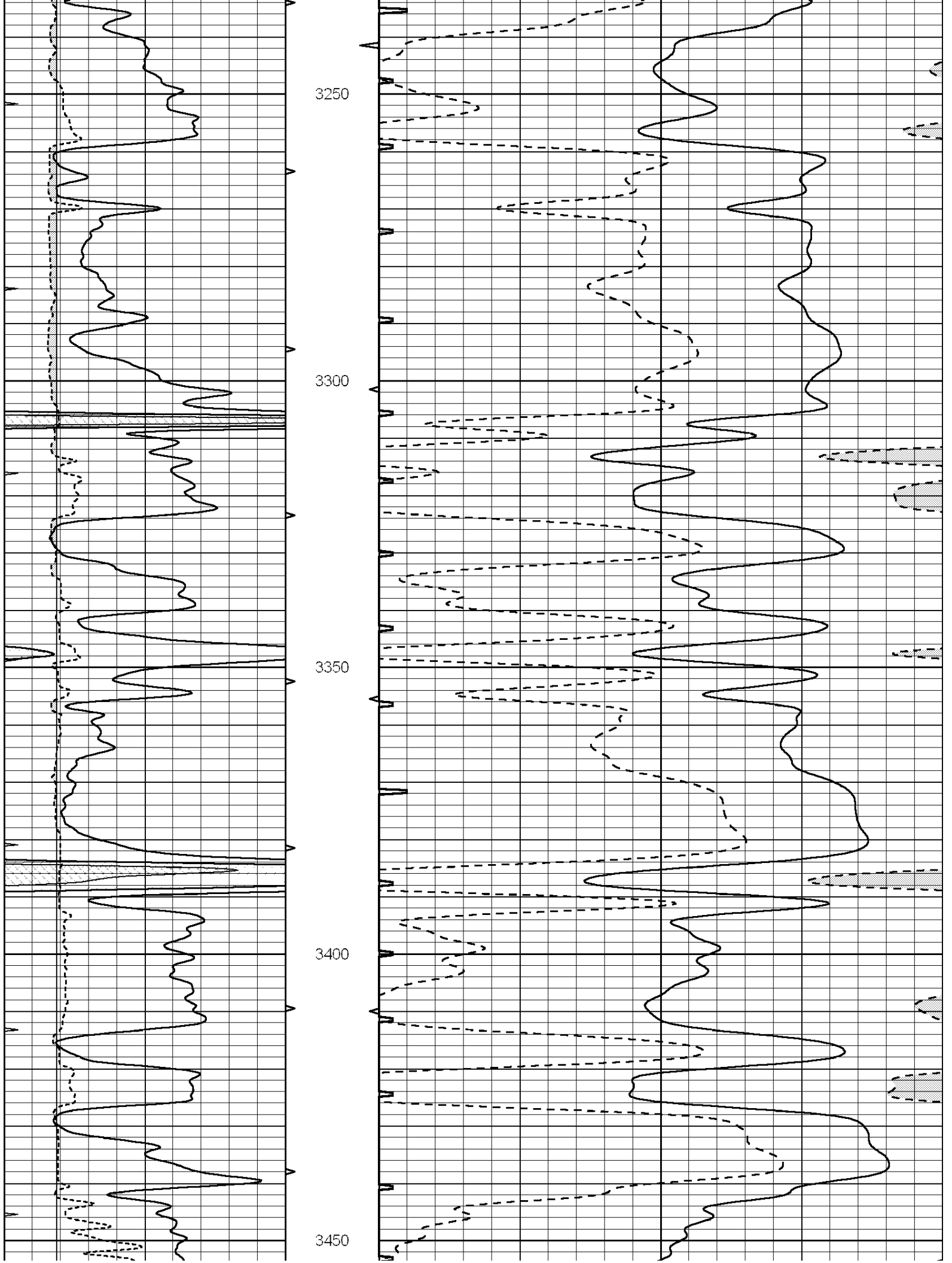
3050

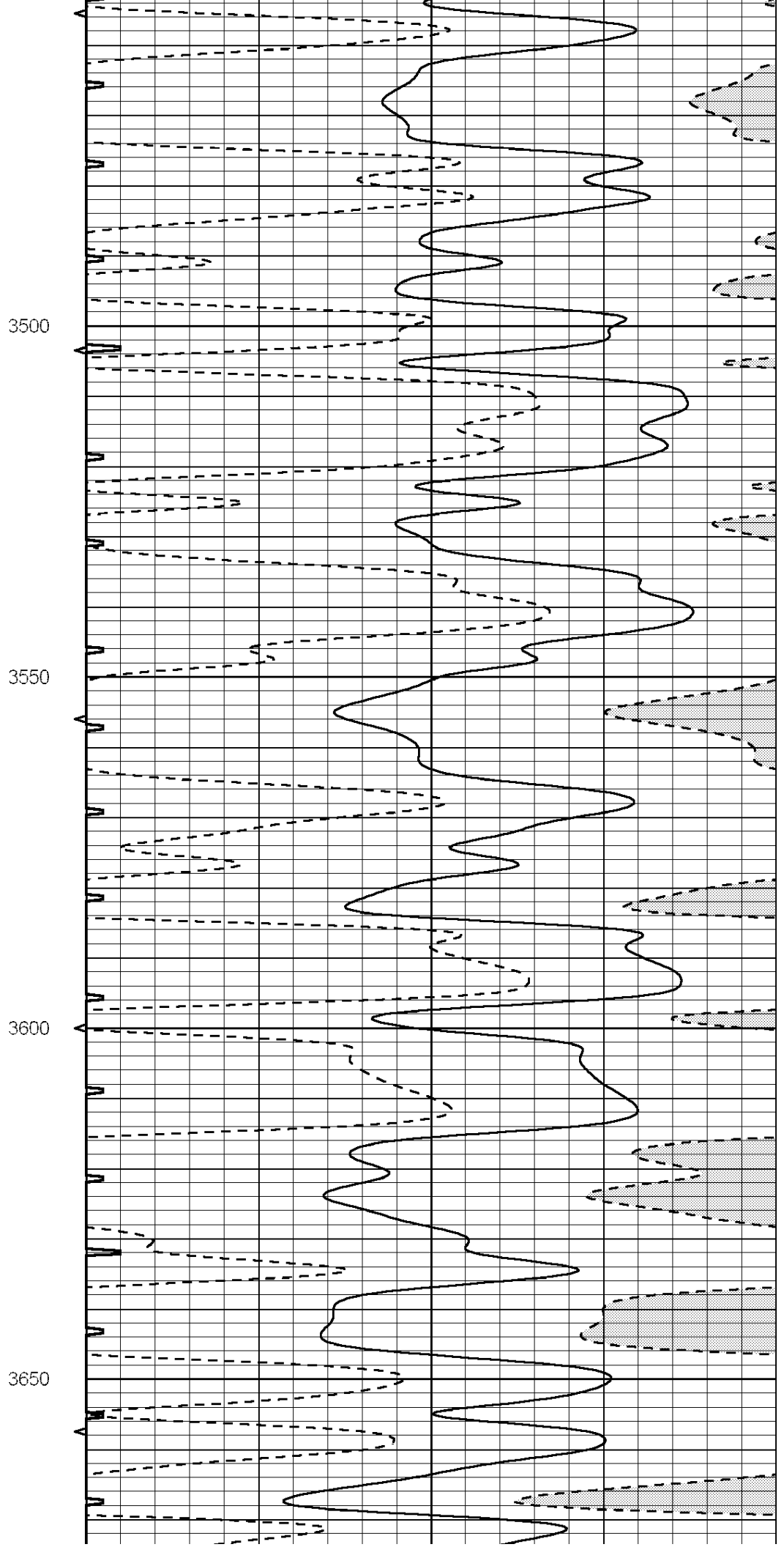
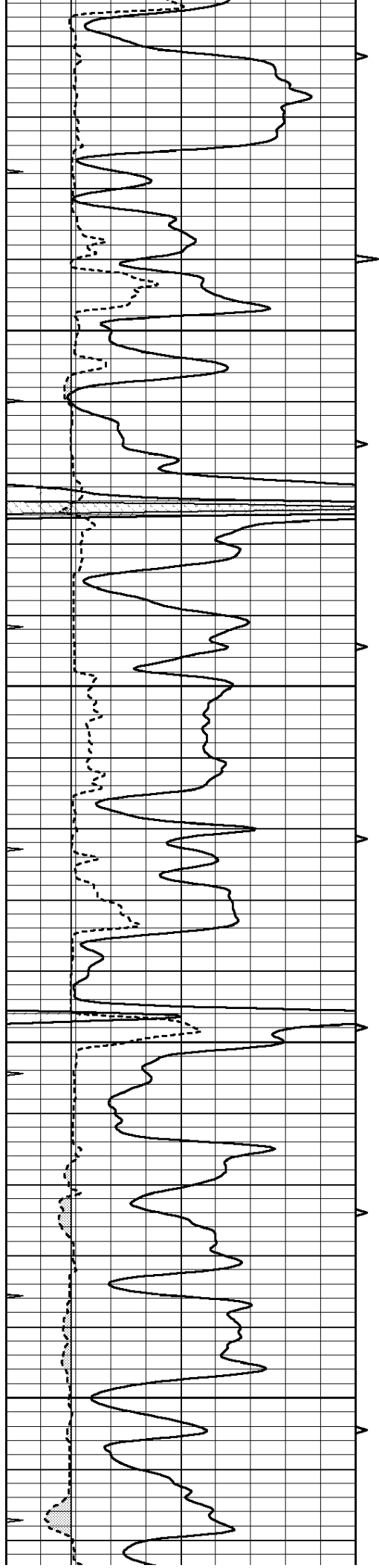
3100

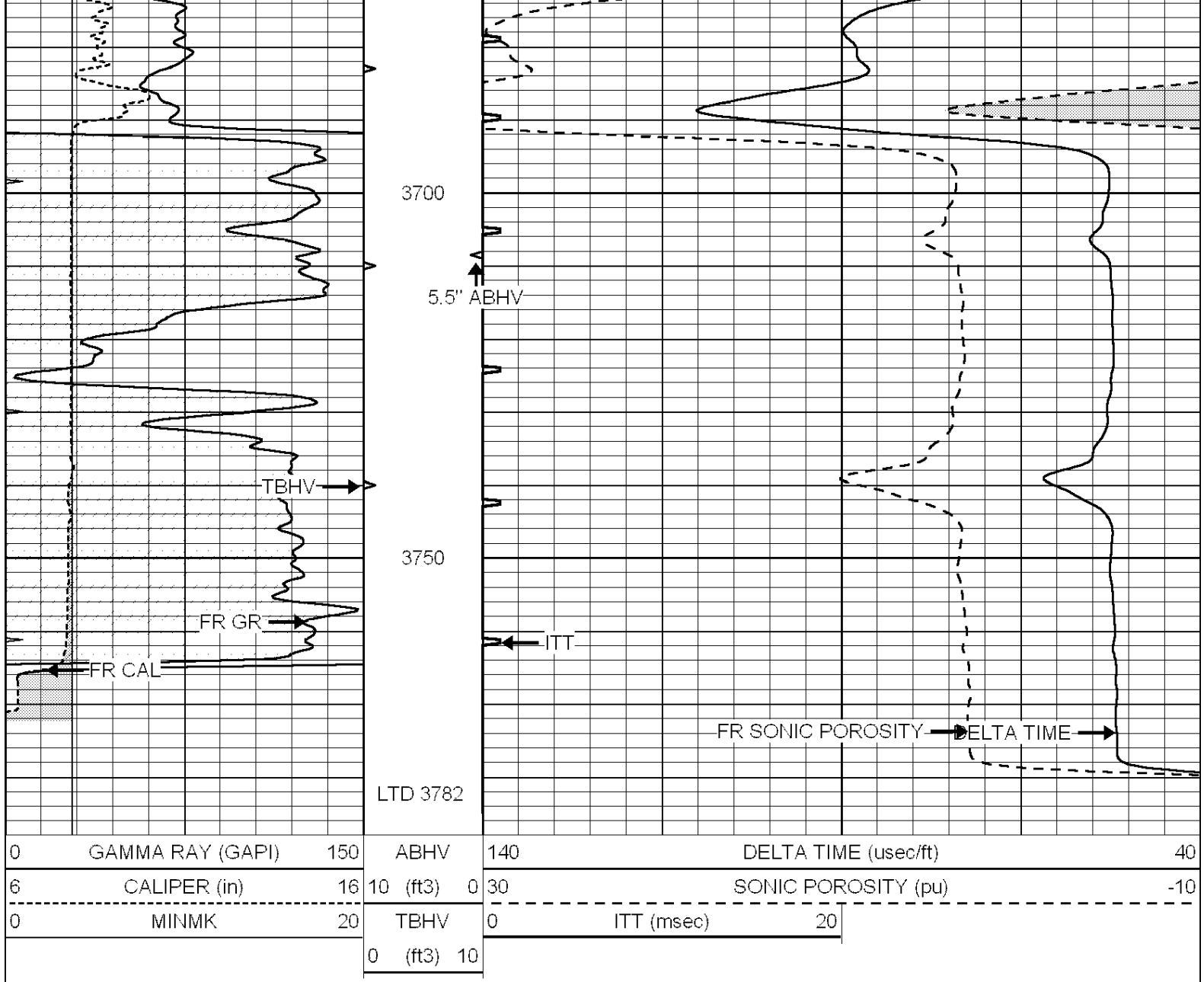
3150

3200







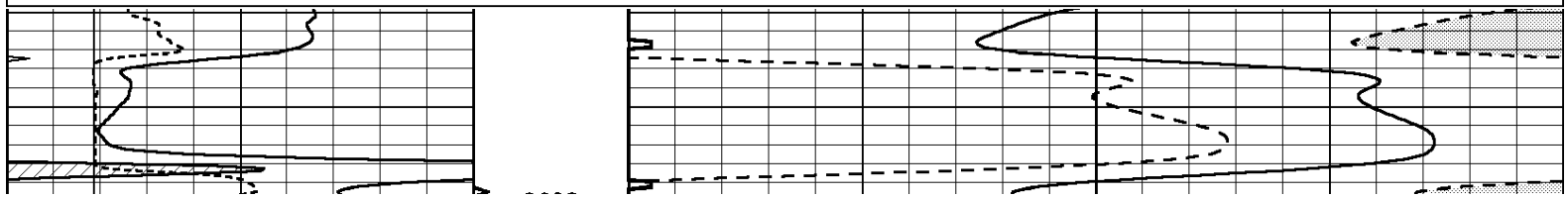


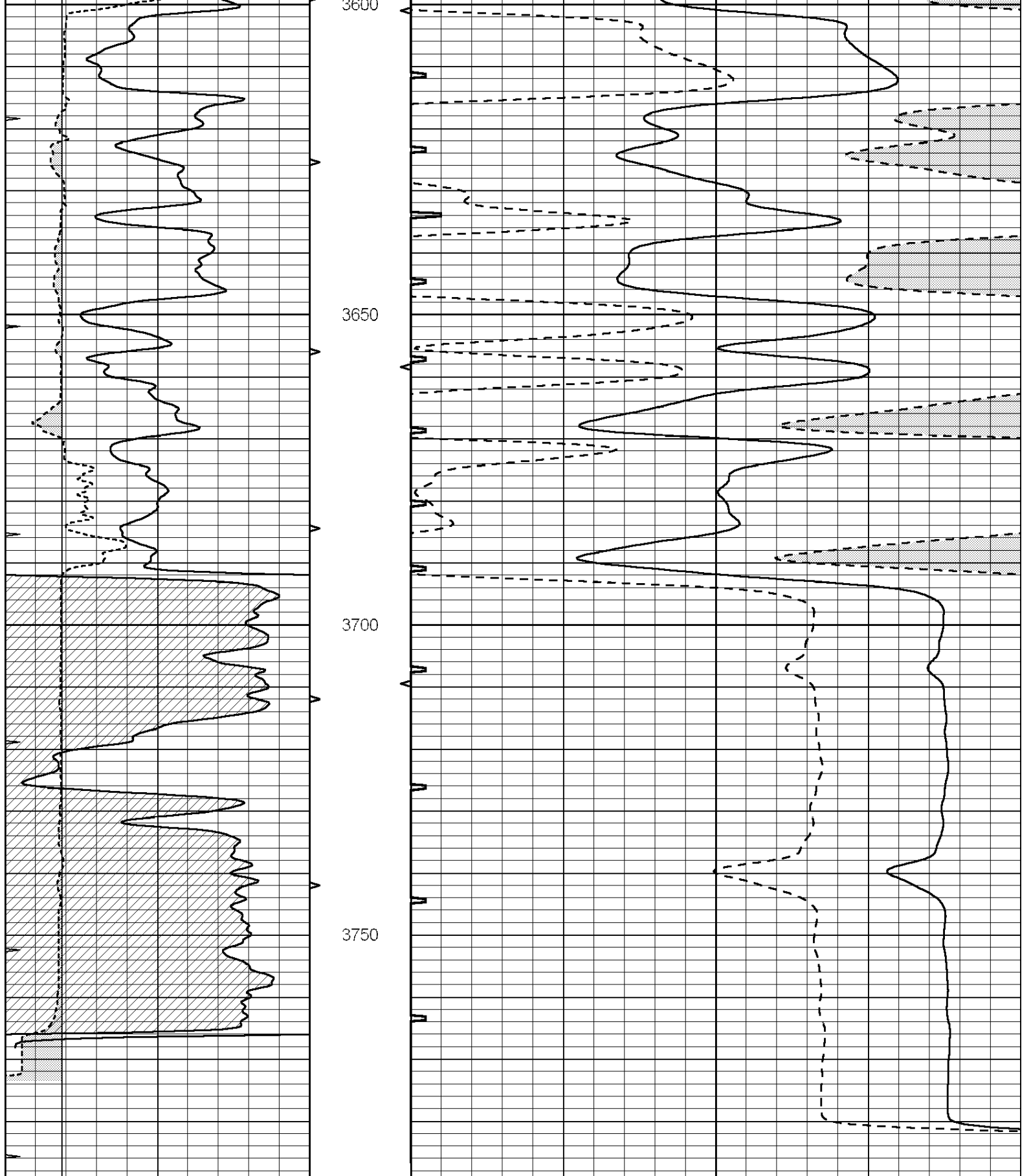
**COMPLETION
& PRODUCTION
SERVICES CO.**

REPEAT SECTION

Database File: 25904pe.db
 Dataset Pathname: pass5.4
 Presentation Format: slt
 Dataset Creation: Wed Oct 29 05:40:02 2014 by Calc SOC 120430
 Charted by: Depth in Feet scaled 1:240

0	GAMMA RAY (GAPI)	150	ABHV	140	DELTA TIME (usec/ft)	40	
6	CALIPER (in)	16	10 (ft3)	0	30	SONIC POROSITY (pu)	-10
0	MINMK	20	TBHV	0	ITT (msec)	20	
			0 (ft3)	10			





0	GAMMA RAY (GAPI)	150	ABHV	140	DELTA TIME (usec/ft)	40	
6	CALIPER (in)	16	10 (ft3)	0	30	SONIC POROSITY (pu)	-10
0	MINMK	20	TBHV	0	ITT (msec)	20	
			0 (ft3)	10			