



**COMPLETION
& PRODUCTION
SERVICES CO.**

**DUAL INDUCTION
LOG**

Company BLURIDGE PETROLEUM CORP.
Well JUENEMANN #2-5
Field WILDCAT
County NORTON
State KANSAS

Company BLUERIDGE PETROLEUM CORPORATION
Well JUENEMANN #2-5
Field WILDCAT
County NORTON State KANSAS

Location: API # : 15-137-20714-0000
SEC 5 TWP 3S RGE 24W
Permanent Datum GROUND LEVEL Elevation 2435
Log Measured From KELLY BUSHING 5' A.G.L.
Drilling Measured From KELLY BUSHING
Other Services
CDL/CNL/PE
MEL/SONIC
Elevation
K.B. 2440
D.F. 2438
G.L. 2435

Date	10/29/14
Run Number	ONE
Depth Driller	3780
Depth Logger	3782
Bottom Logged Interval	3780
Top Log Interval	00
Casing Driller	8 5/8"@260'
Casing Logger	258
Bit Size	7 7/8"
Type Fluid in Hole	CHEMICAL MUD
Density / Viscosity	9.4/53
pH / Fluid Loss	10.0/6.0
Source of Sample	FLOWLINE
Rim @ Meas. Temp	1.50@70F
Rmf @ Meas. Temp	1.13@70F
Rmc @ Meas. Temp	1.80@70F
Source of Rmf / Rmc	MEASUREMENT
Rim @ BHT	.921@114F
Time Circulation Stopped	2 HOURS
Time Logger on Bottom	3:00 A.M.
Maximum Recorded Temperature	114F
Equipment Number	4854
Location	HAYS, KANSAS
Recorded By	JEFF LUEBBERS
Witnessed By	CLINT MUSGROVE

<<< Fold Here >>>

All interpretations are opinions based on inferences from electrical or other measurements and we cannot and do not guarantee the accuracy or correctness of any interpretation, and we shall not, except in the case of gross or willful negligence on our part, be liable or responsible for any loss, costs, damages, or expenses incurred or sustained by anyone resulting from any interpretation made by any of our officers, agents or employees. These interpretations are also subject to our general terms and conditions set out in our current Price Schedule.

Comments

THANK YOU FOR USING "NABORS" HAYS, KANSAS (785) 628-6395
DIRECTIONS
NORTON, KS., 6W. ON HWY 36, 1/2S., W. INTO



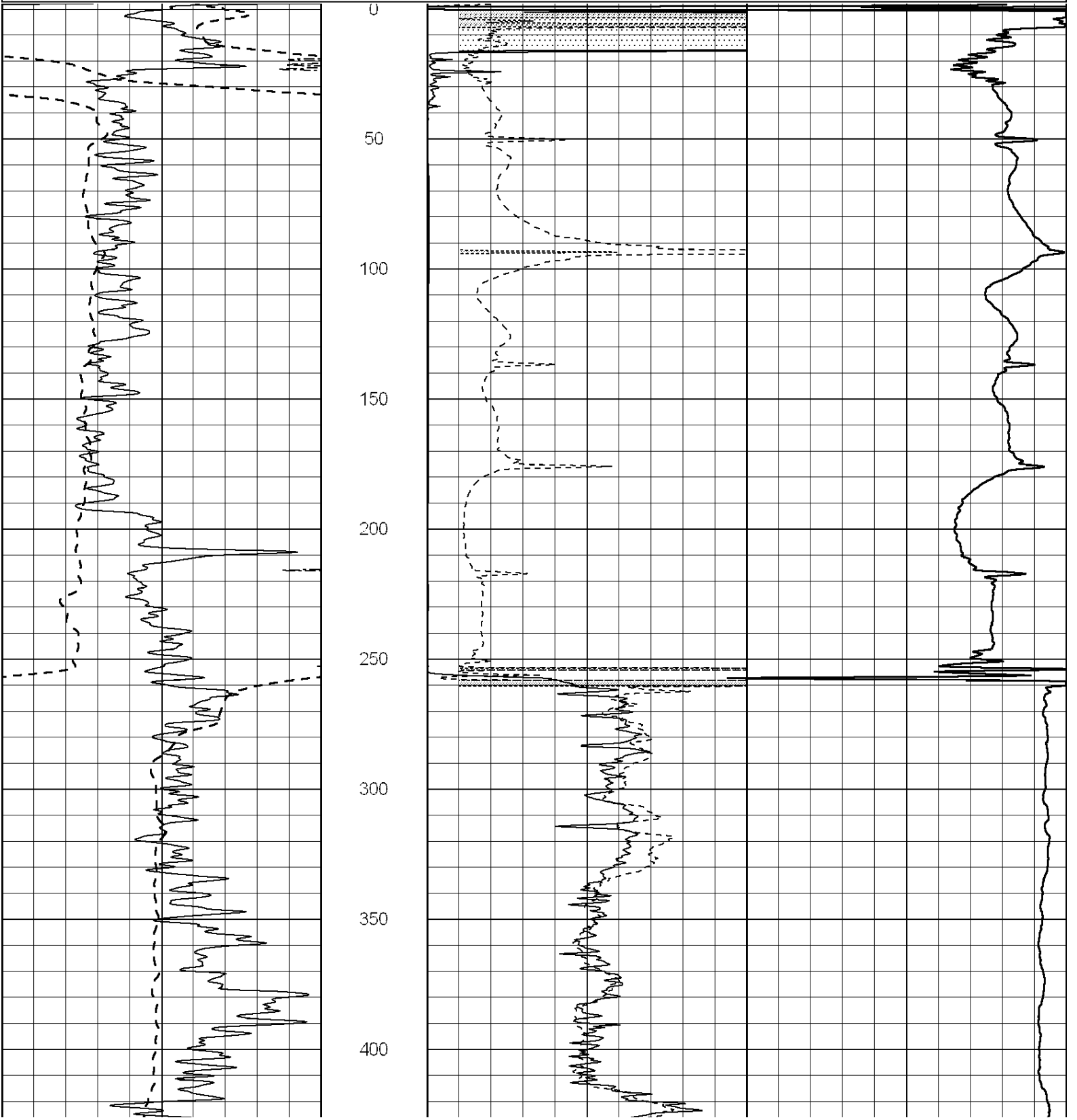
MAIN SECTION

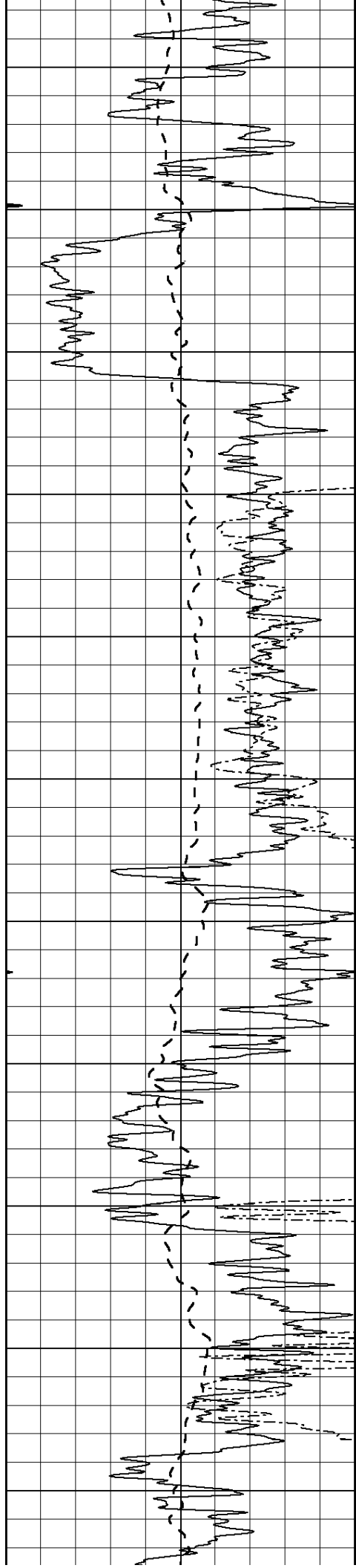
Database File: 25904pe.db
 Dataset Pathname: pass3.7
 Presentation Format: dil2
 Dataset Creation: Wed Oct 29 04:14:58 2014
 Charted by: Depth in Feet scaled 1:600

0	Gamma Ray (GAPI)	150
-100	SP (mV)	100
0	RWA (Ohm-m)	1

0	RLL3 (Ohm-m)	50
0	RILD (Ohm-m)	50
1000	CILD (mmho/m)	0

50	RILD X10 (Ohm-m)	500
50	RLL3 X10 (Ohm-m)	500





450

500

550

600

650

700

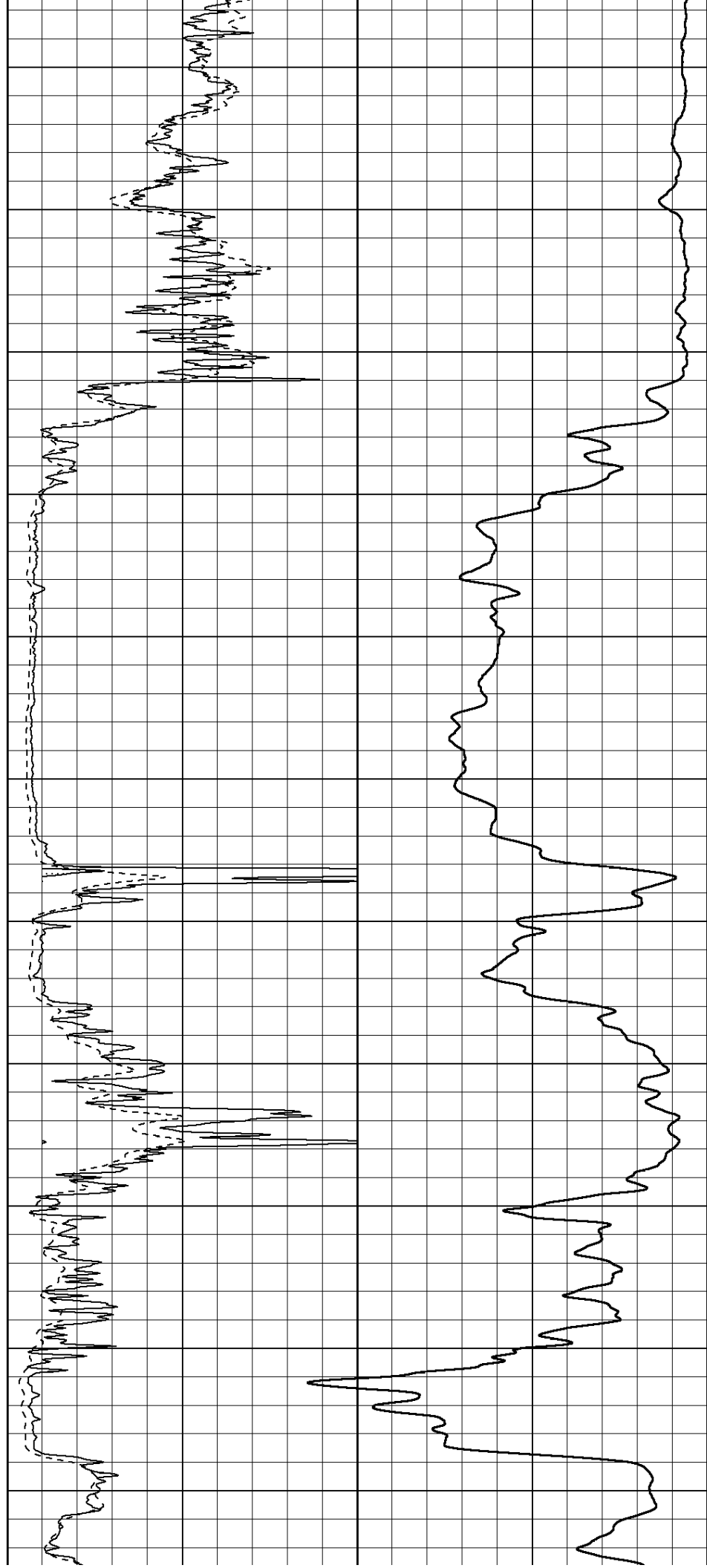
750

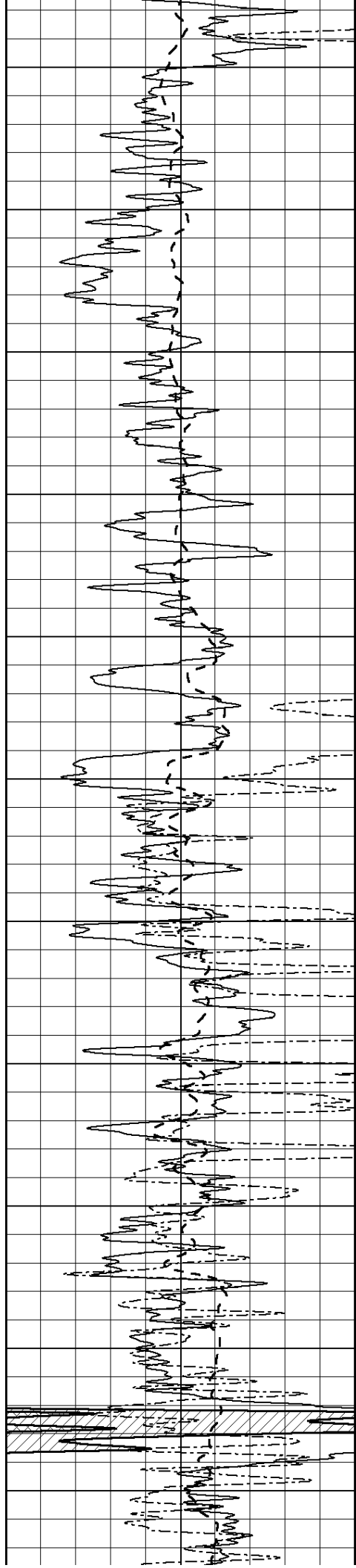
800

850

900

950





1000

1050

1100

1150

1200

1250

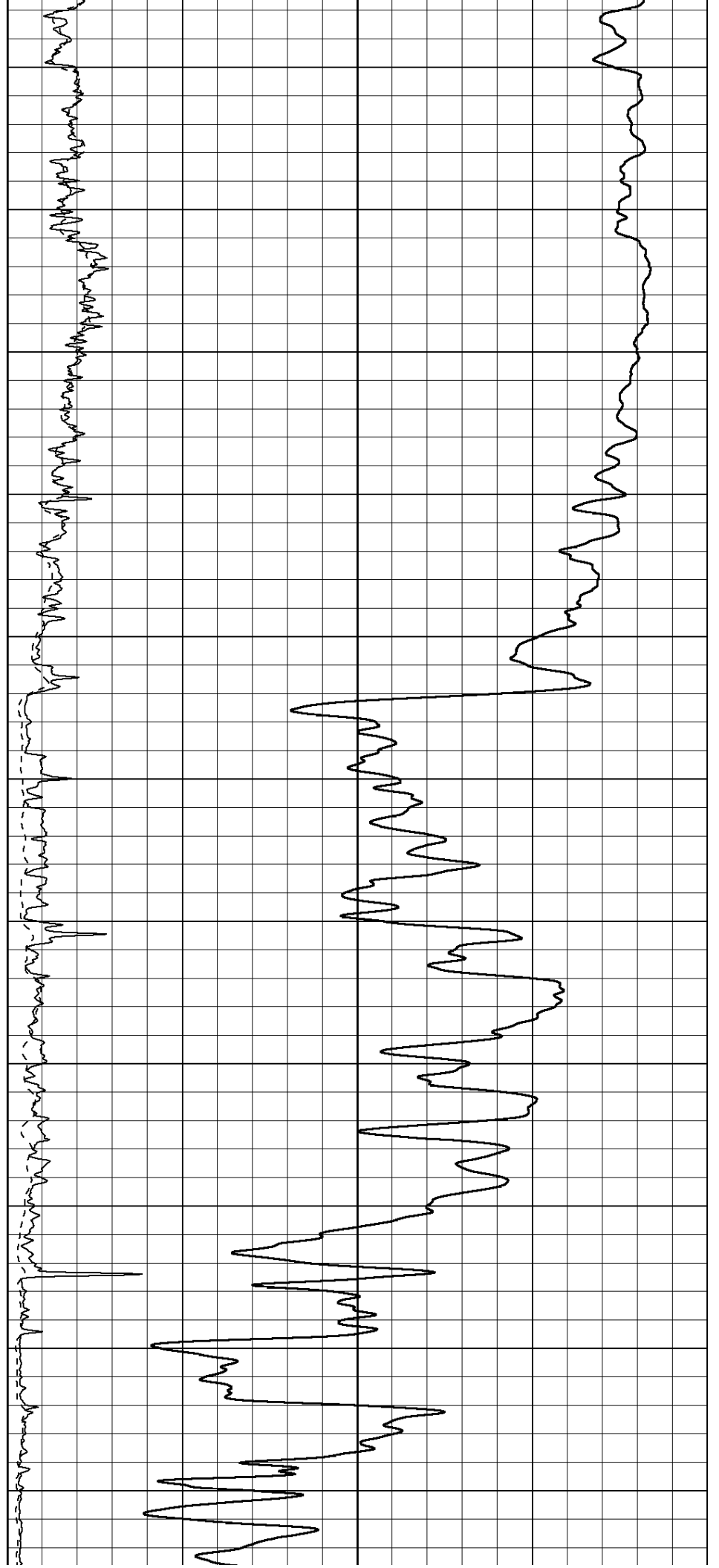
1300

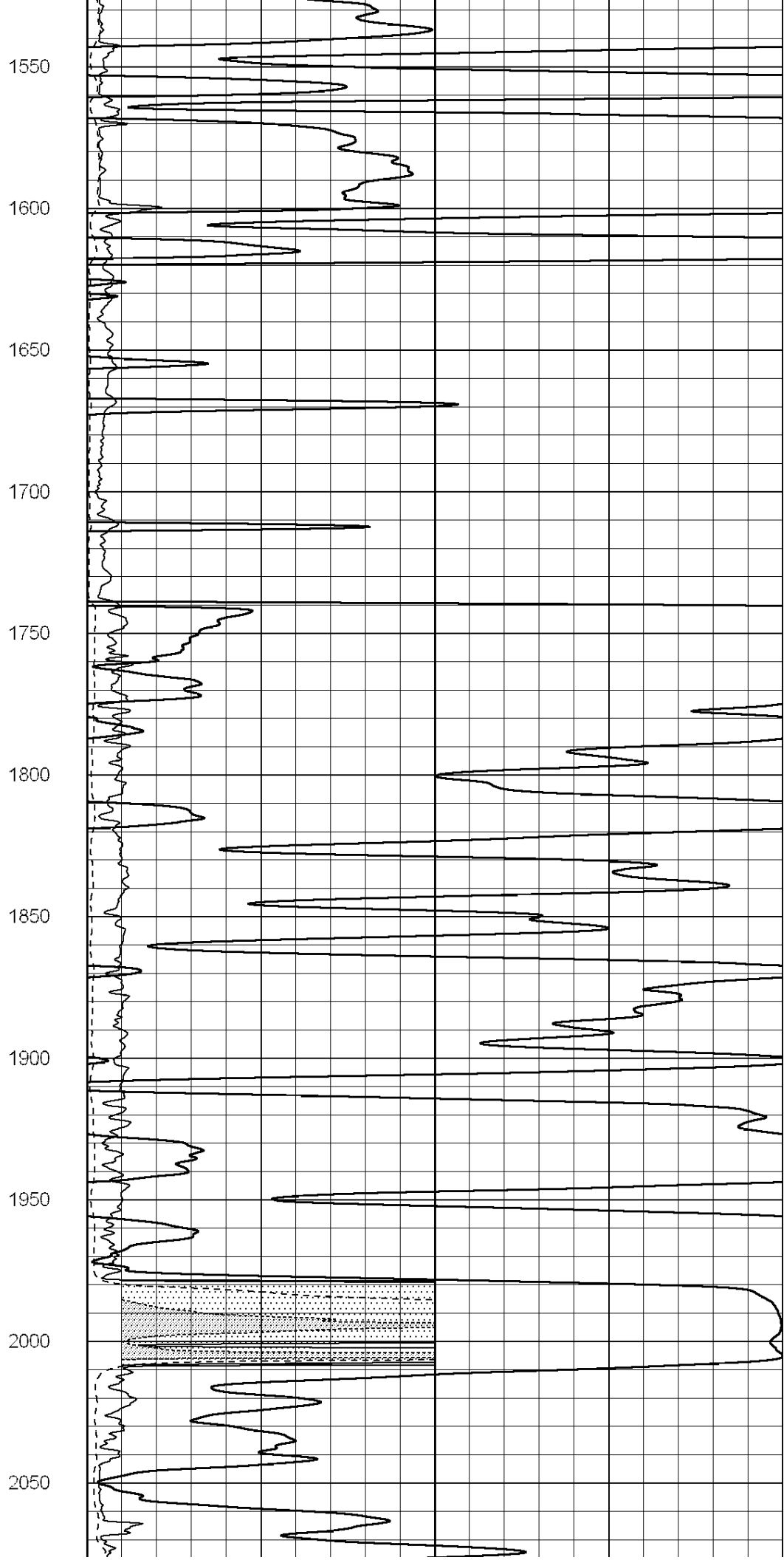
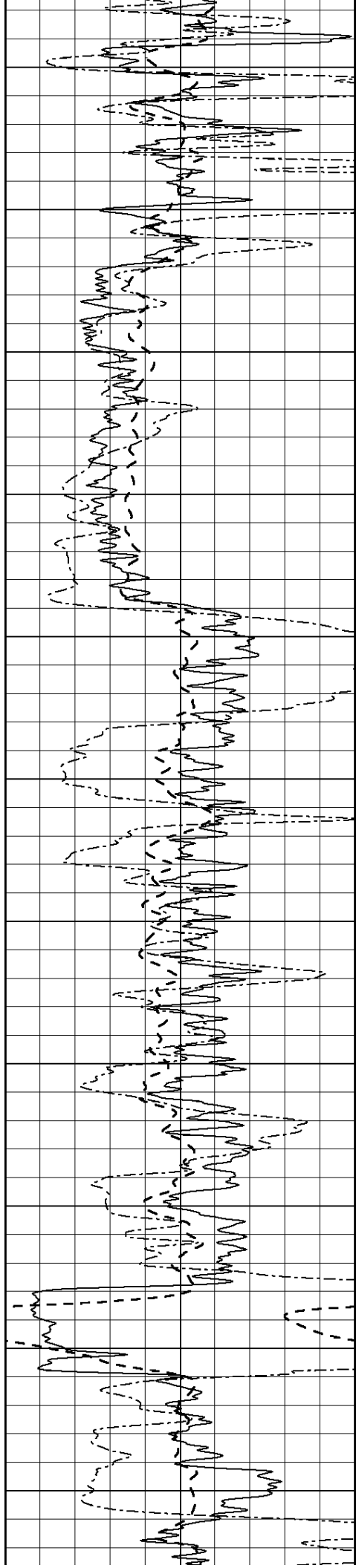
1350

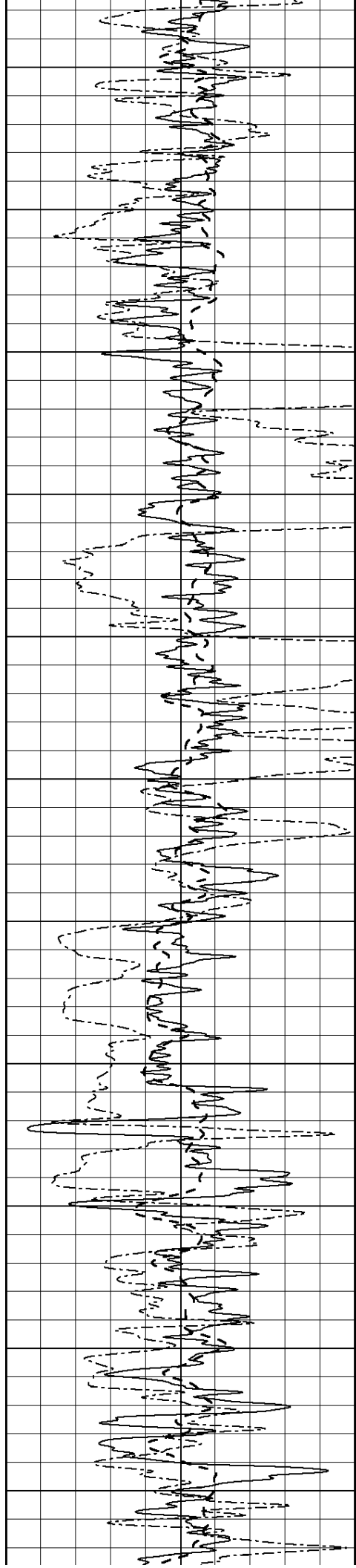
1400

1450

1500







2100

2150

2200

2250

2300

2350

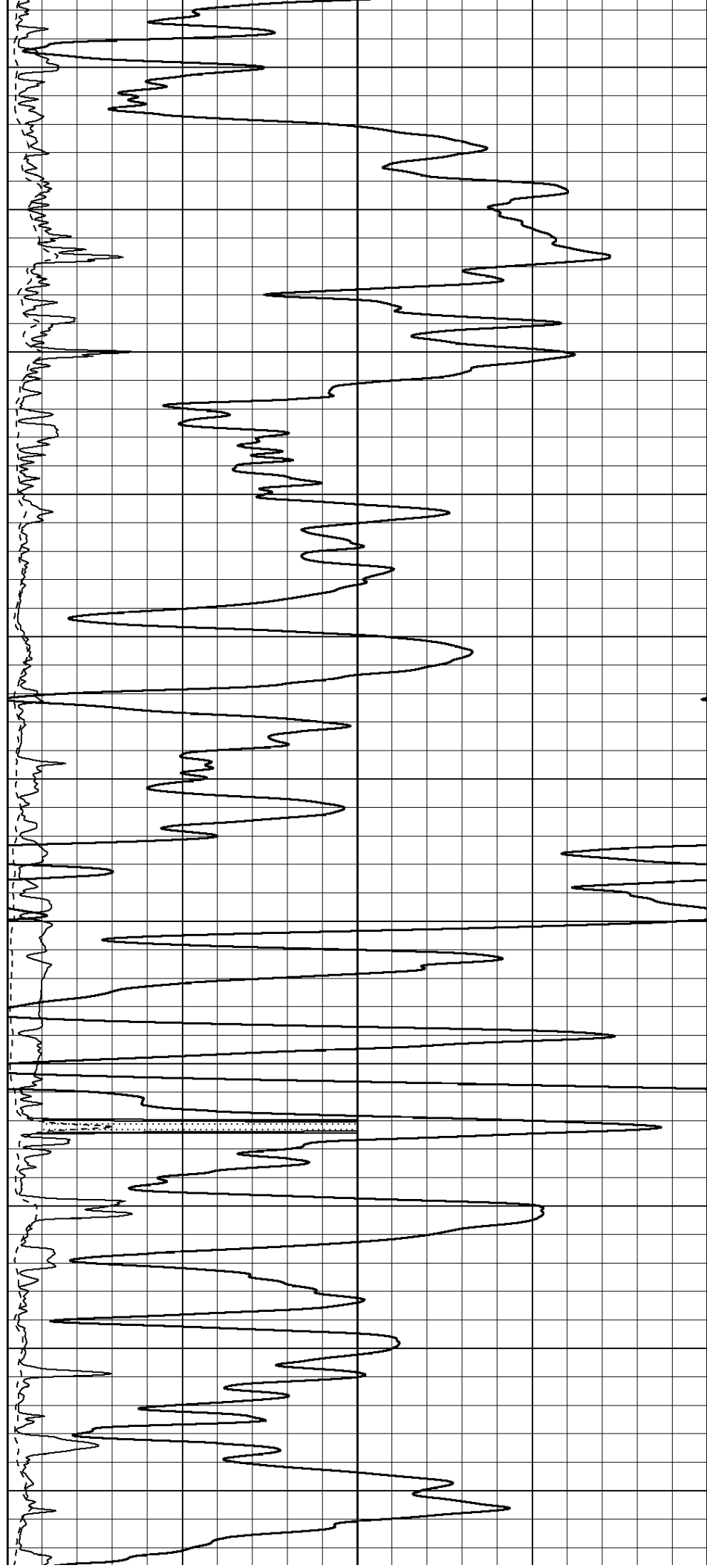
2400

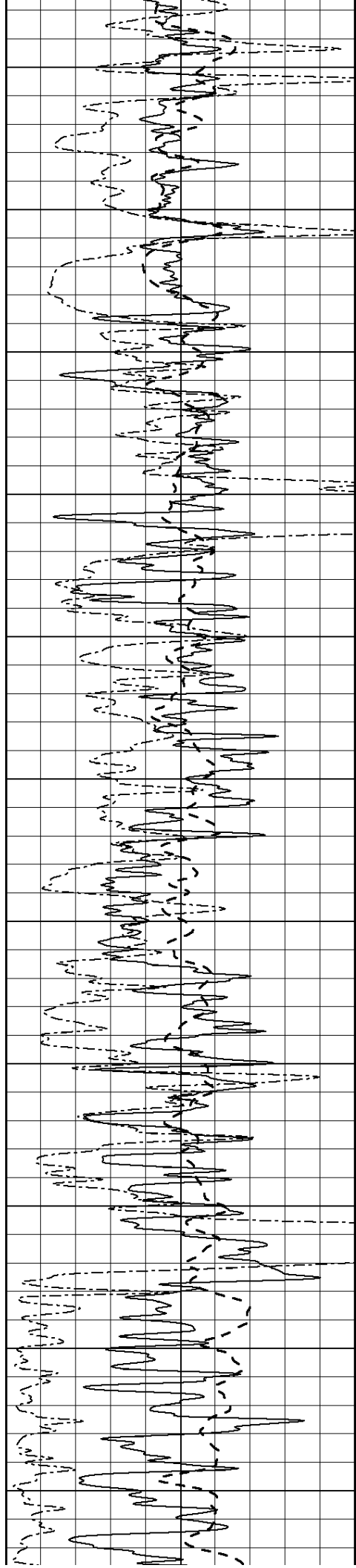
2450

2500

2550

2600





2650

2700

2750

2800

2850

2900

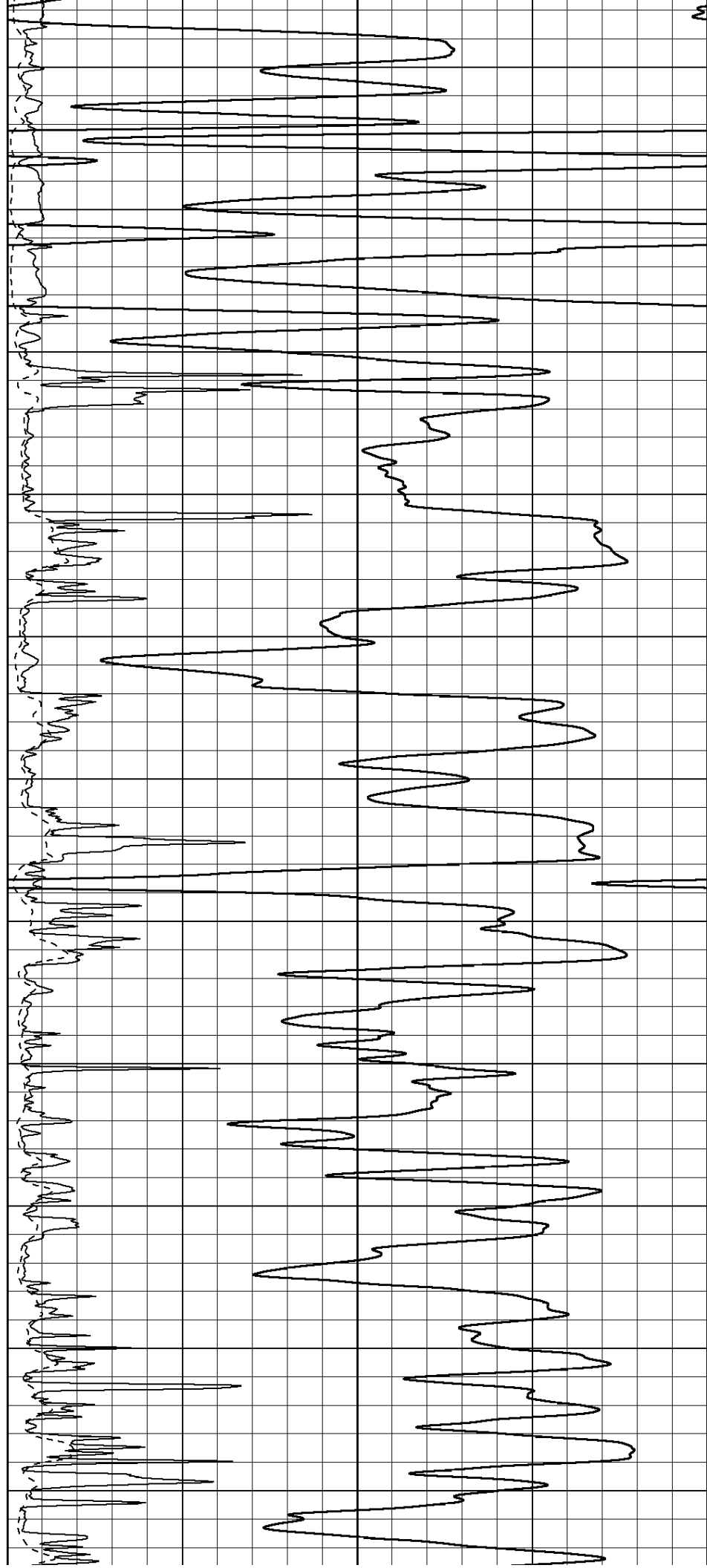
2950

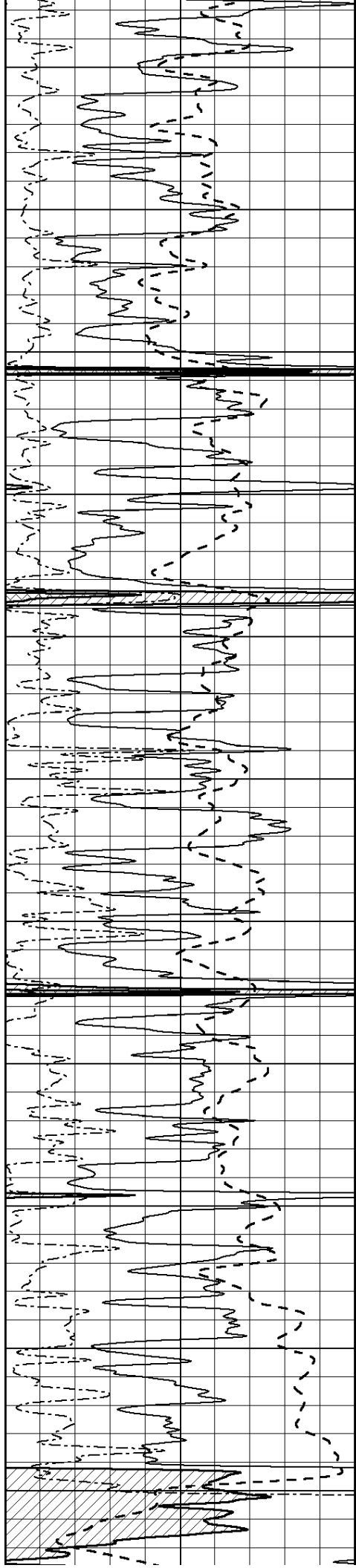
3000

3050

3100

3150





3200

3250

3300

3350

3400

3450

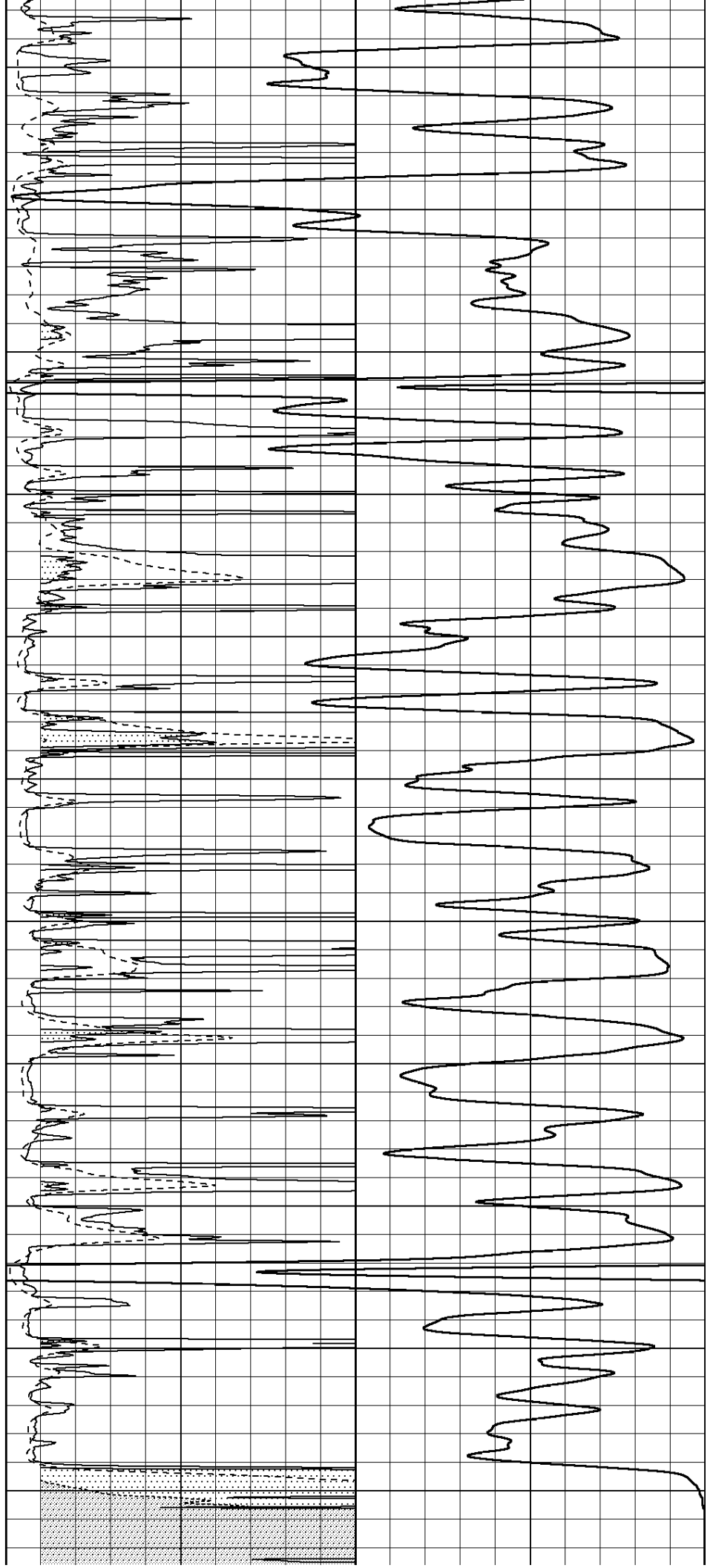
3500

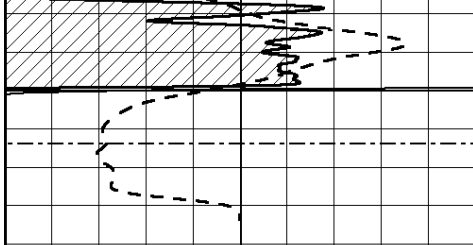
3550

3600

3650

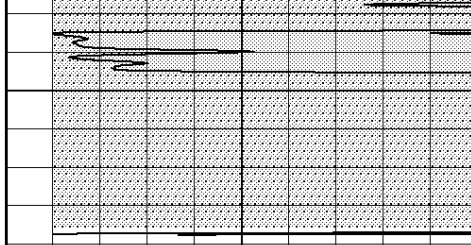
3700





3750

0	Gamma Ray (GAPI)	150
-100	SP (mV)	100
0	RWA (Ohm-m)	1



0	RLL3 (Ohm-m)	50
0	RILD (Ohm-m)	50
1000	CILD (mmho/m)	0

50	RILD X10 (Ohm-m)	500
50	RLL3 X10 (Ohm-m)	500



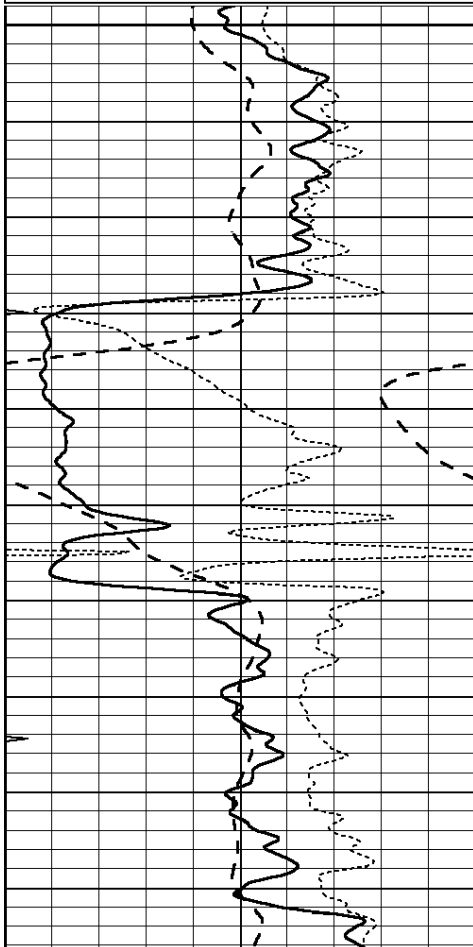
**COMPLETION
& PRODUCTION
SERVICES CO.**

ANHYDRITE

Database File: 25904pe.db
 Dataset Pathname: pass3.8
 Presentation Format: _dil
 Dataset Creation: Wed Oct 29 04:15:15 2014
 Charted by: Depth in Feet scaled 1:240

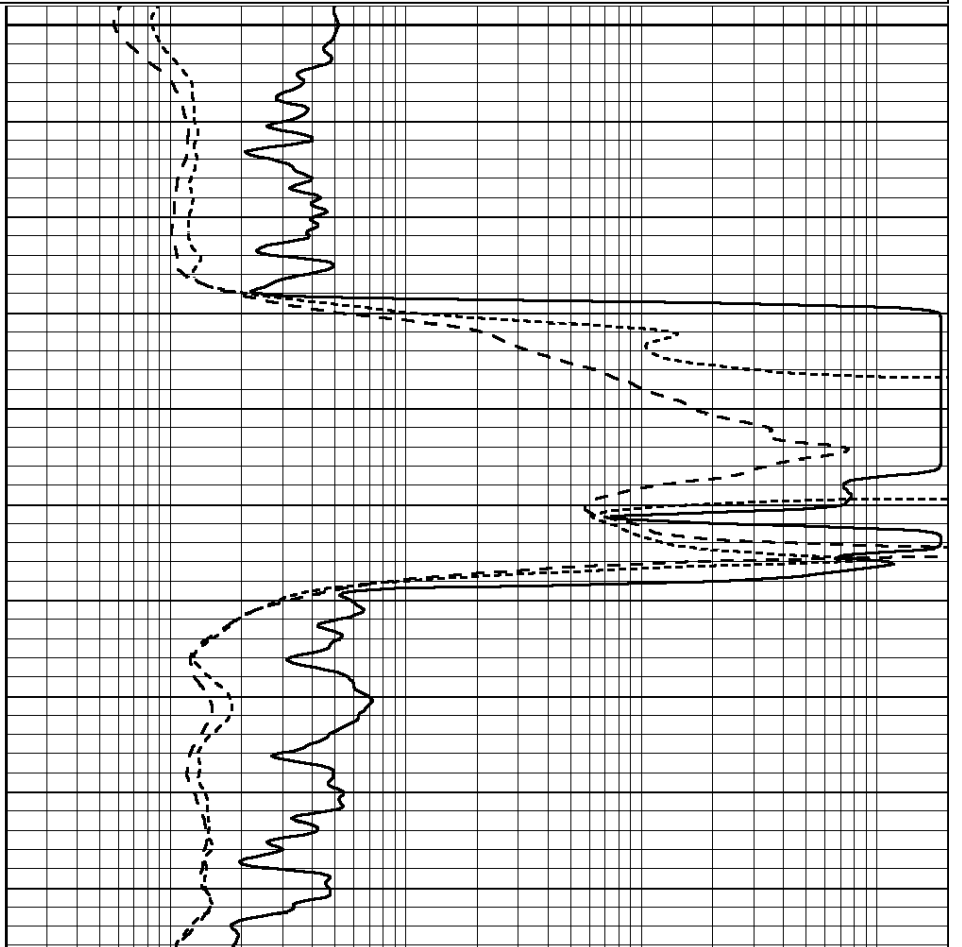
0	GAMMA RAY (GAPI)	150
-100	SP (mV)	100
-250	Rxo/Rt	50
0	MINMK	20

0.2	SHALLOW GUARD (Ohm-m)	2000
0.2	DEEP INDUCTION (Ohm-m)	2000
0.2	MEDIUM INDUCTION (Ohm-m)	2000



1950

2000



0	GAMMA RAY (GAPI)	150
-100	SP (mV)	100
-250	Rxo/Rt	50
0	MINMK	20

2050

0.2	SHALLOW GUARD (Ohm-m)	2000
0.2	DEEP INDUCTION (Ohm-m)	2000
0.2	MEDIUM INDUCTION (Ohm-m)	2000



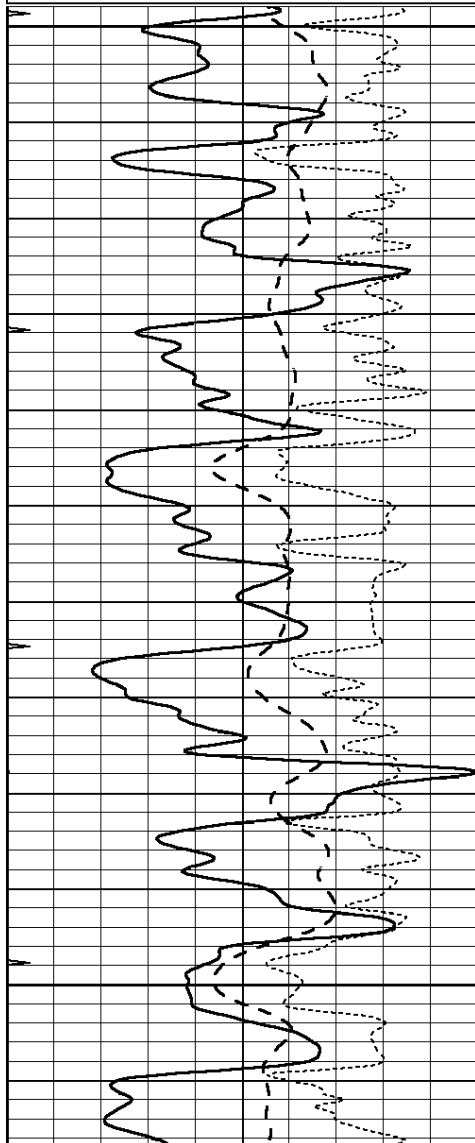
**COMPLETION
& PRODUCTION
SERVICES CO.**

MAIN SECTION

Database File: 25904pe.db
 Dataset Pathname: pass3.7
 Presentation Format: _dil
 Dataset Creation: Wed Oct 29 04:14:58 2014
 Charted by: Depth in Feet scaled 1:240

0	GAMMA RAY (GAPI)	150
-100	SP (mV)	100
-250	Rxo/Rt	50
0	MINMK	20

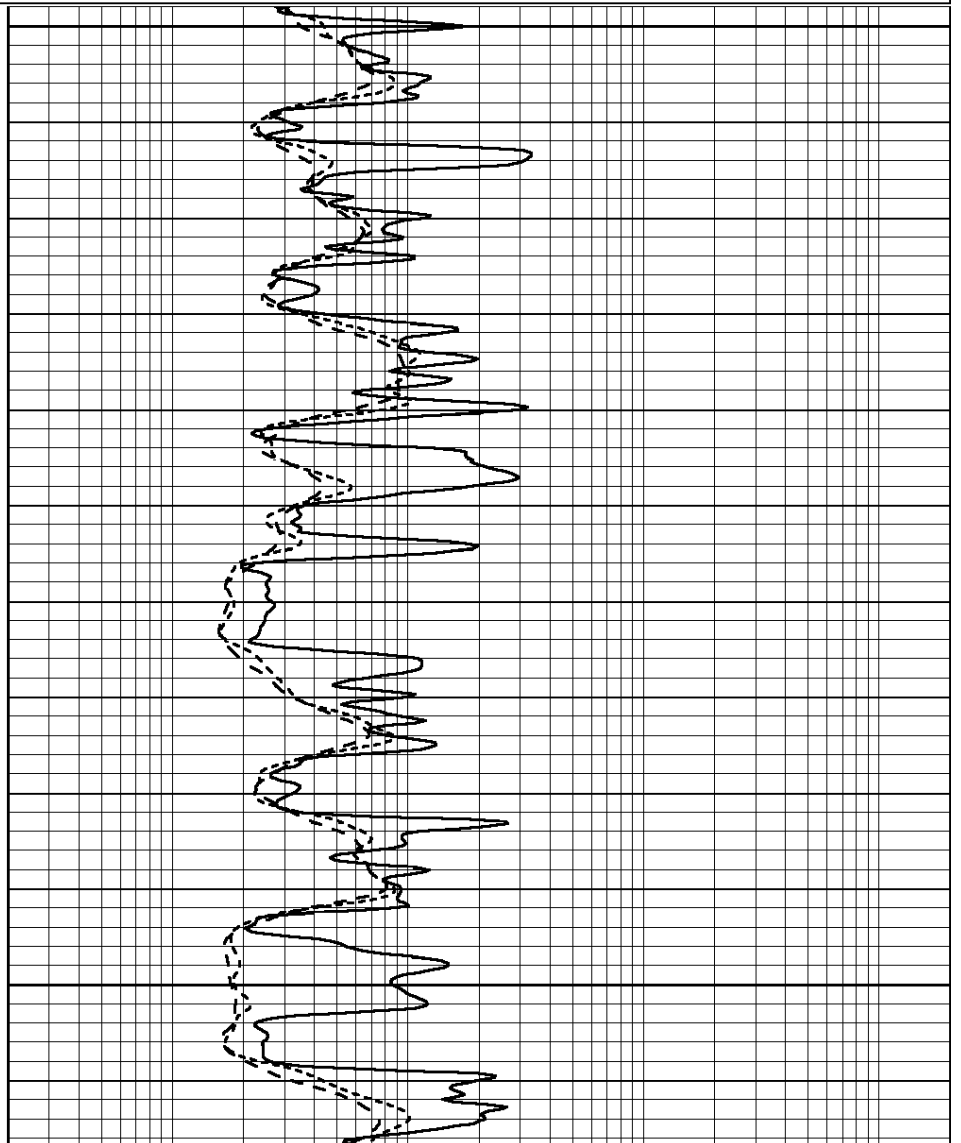
0.2	SHALLOW GUARD (Ohm-m)	2000
0.2	DEEP INDUCTION (Ohm-m)	2000
0.2	MEDIUM INDUCTION (Ohm-m)	2000

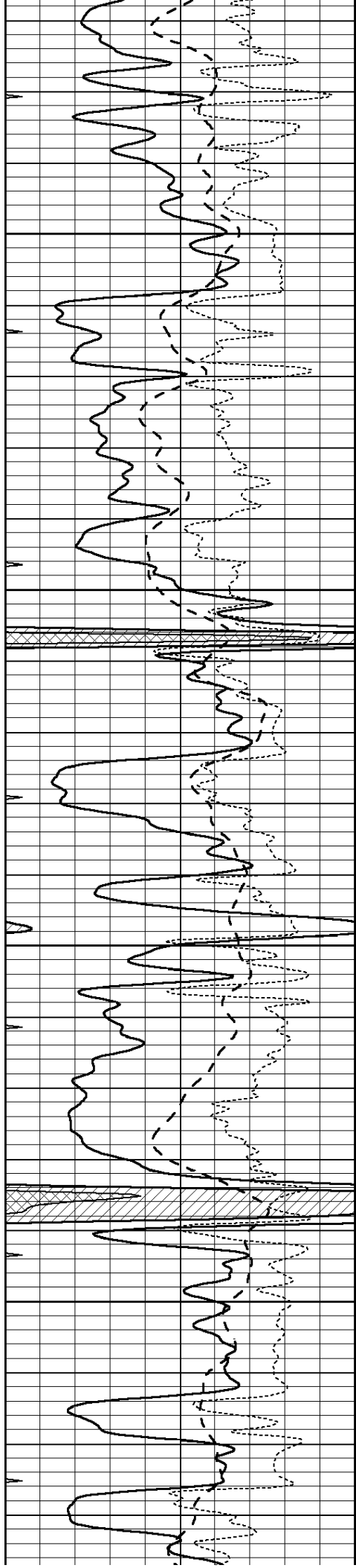


3100

3150

3200



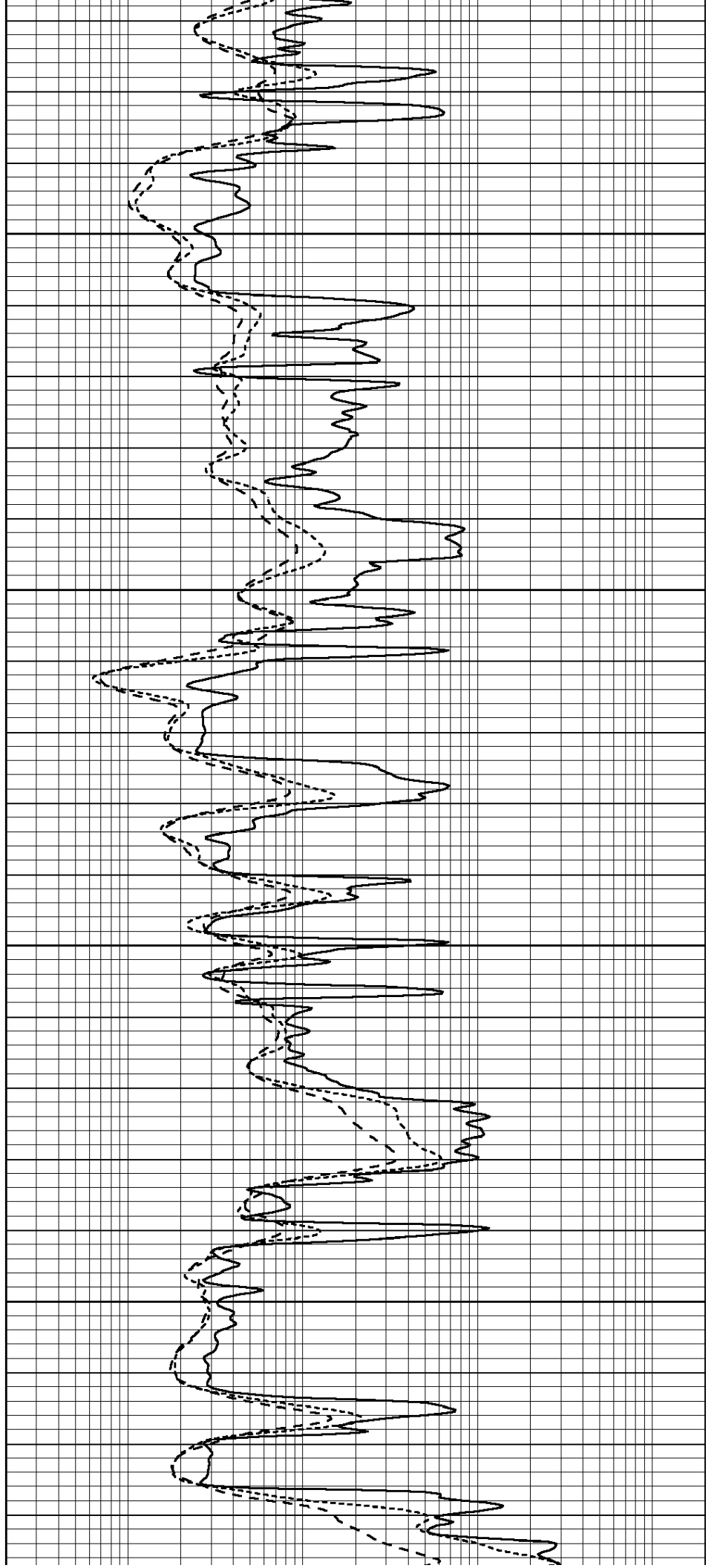


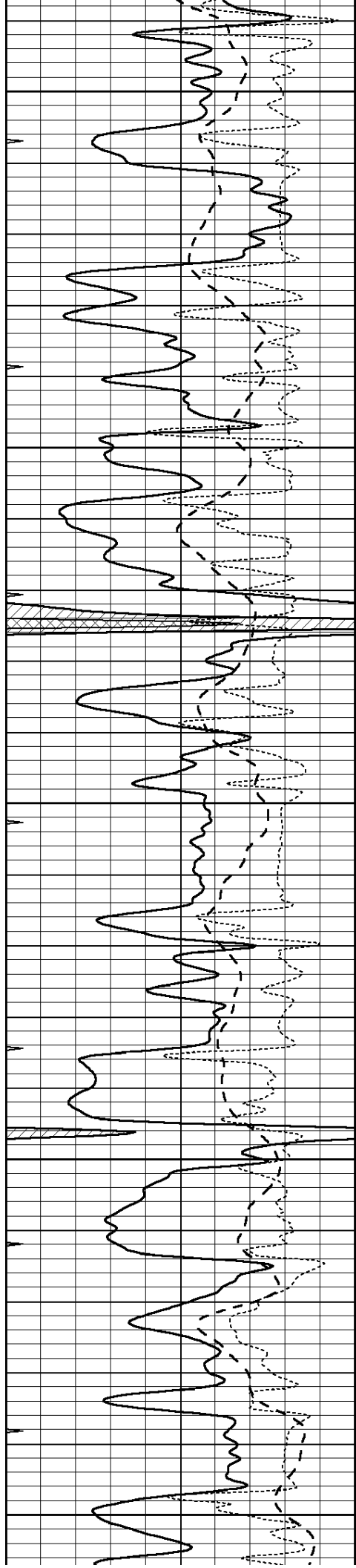
3250

3300

3350

3400





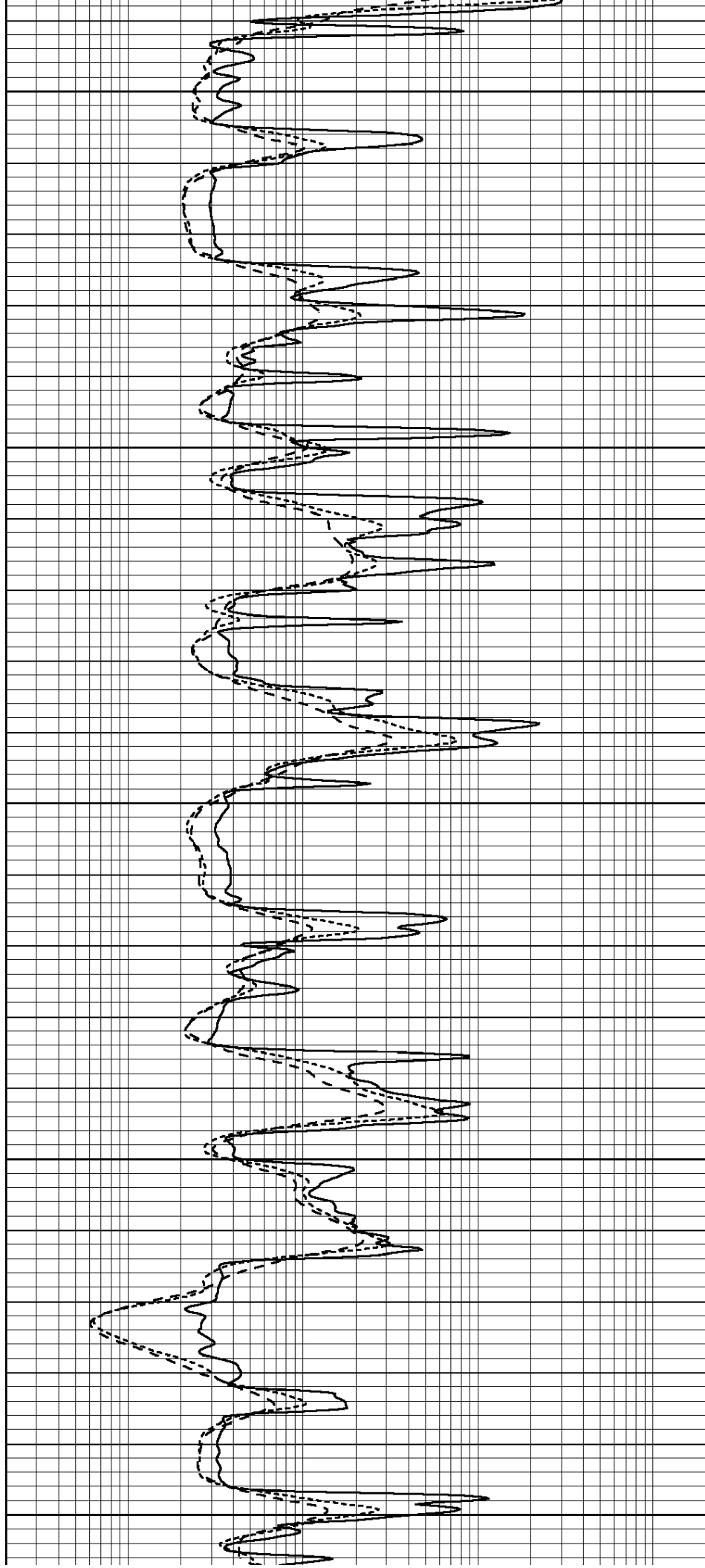
3450

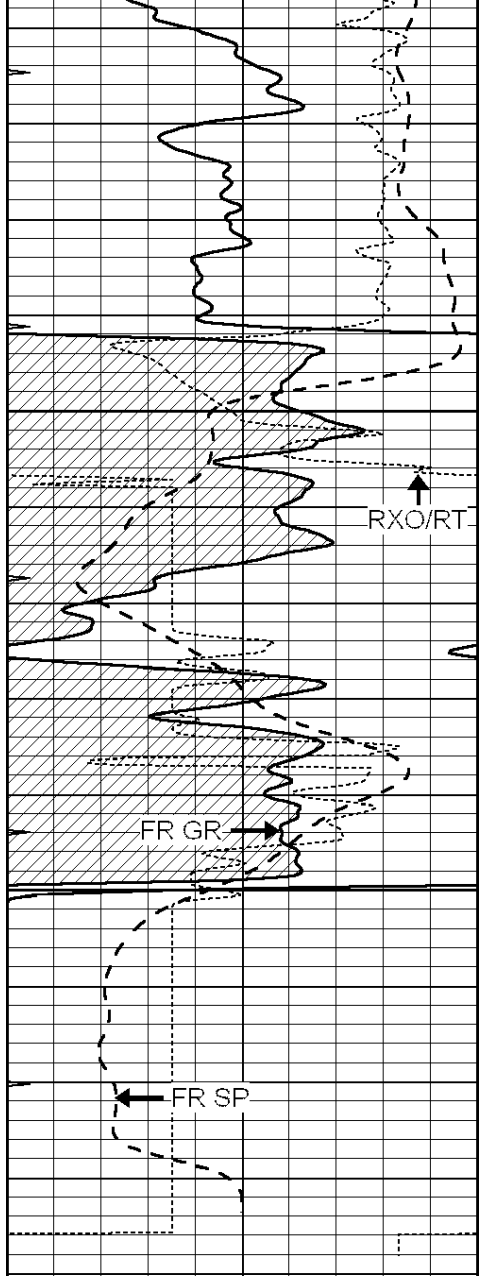
3500

3550

3600

3650





3700

RXO/RT

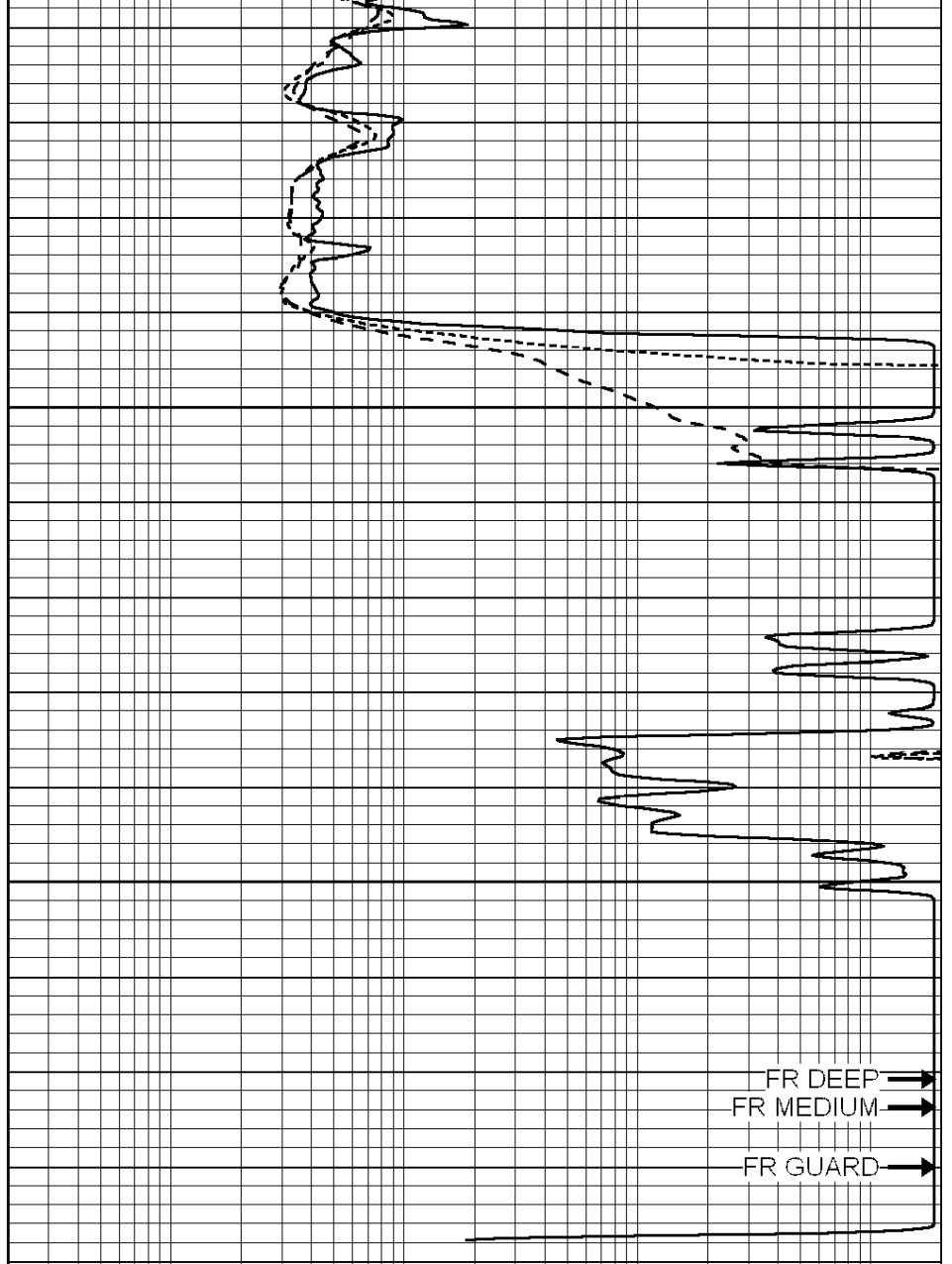
FR GR

3750

FR SP

LTD 3782

0	GAMMA RAY (GAPI)	150
-100	SP (mV)	100
-250	Rxo/Rt	50
0	MINMK	20



FR DEEP

FR MEDIUM

FR GUARD

0.2	SHALLOW GUARD (Ohm-m)	2000
0.2	DEEP INDUCTION (Ohm-m)	2000
0.2	MEDIUM INDUCTION (Ohm-m)	2000



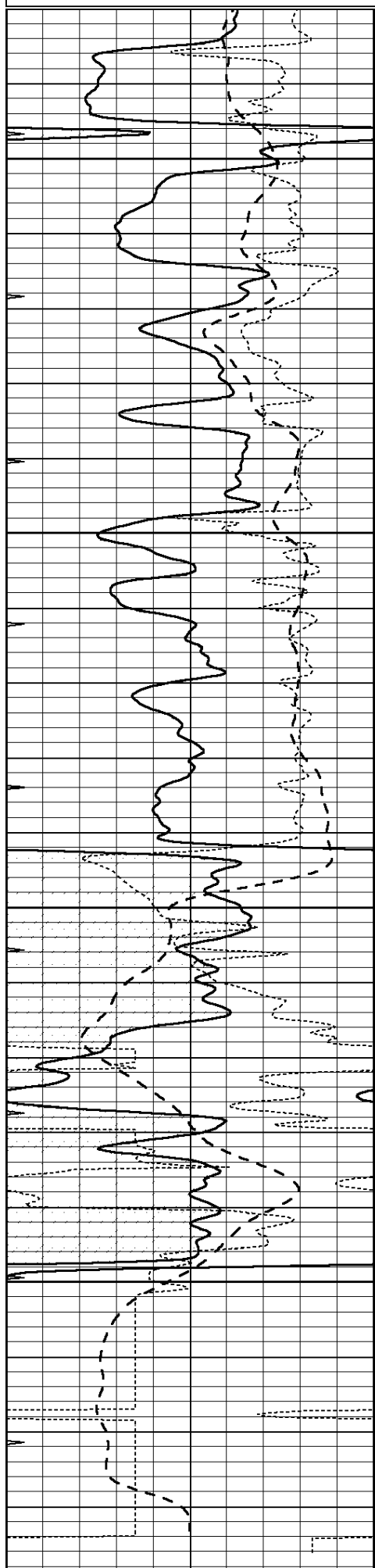
**COMPLETION
& PRODUCTION
SERVICES CO.**

REPEAT SECTION

Database File: 25904pe.db
 Dataset Pathname: pass2.2
 Presentation Format: _dil
 Dataset Creation: Wed Oct 29 03:20:00 2014
 Charted by: Depth in Feet scaled 1:240

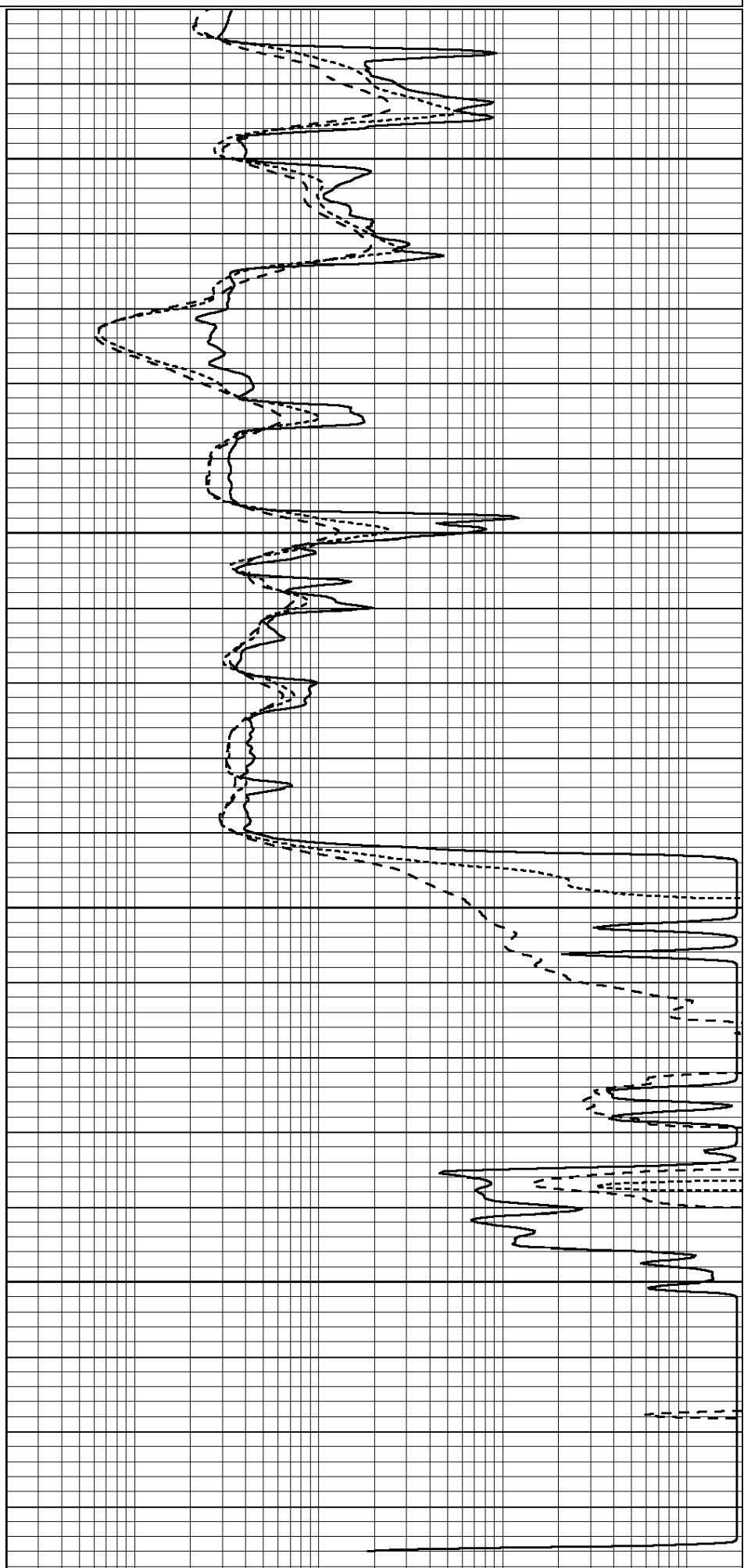
0	GAMMA RAY (GAPI)	150
-100	SP (mV)	100
-250	Rxo/Rt	50
0	MINMK	20

0.2	SHALLOW GUARD (Ohm-m)	2000
0.2	DEEP INDUCTION (Ohm-m)	2000
0.2	MEDIUM INDUCTION (Ohm-m)	2000



3600
3650
3700
3750

0 GAMMA RAY (GAPI) 150



0.2 SHALLOW CHARD (Ohm m) 2000

-100	SP (mV)	100
-250	Rxo/Rt	50
0	MINMK	20

0.2	DEEP INDUCTION (Ohm-m)	2000
0.2	MEDIUM INDUCTION (Ohm-m)	2000

Calibration Report

Database File: 25904pe.db
 Dataset Pathname: pass3.7
 Dataset Creation: Wed Oct 29 04:14:58 2014

Dual Induction Calibration Report

Serial-Model: PROBE9-DILG
 Surface Cal Performed: Thu Oct 16 05:30:22 2014
 Downhole Cal Performed: Mon Jul 28 12:02:56 2008
 After Survey Verification Performed: Mon Jul 28 12:02:56 2008

Surface Calibration

Loop:	Readings			References			Results	
	Air	Loop		Air	Loop		m	b
Deep	-0.014	0.629	V	0.000	400.000	mmho/m	670.000	-16.000
Medium	0.039	0.728	V	0.000	464.000	mmho/m	670.000	-32.000
Internal:	Zero	Cal		Zero	Cal		m	b
Deep	0.011	0.610	V	0.000	400.000	mmho/m	667.135	-7.256
Medium	0.005	0.712	V	0.000	464.000	mmho/m	655.677	-3.102

Downhole Calibration

	Readings			References			Results	
	Zero	Cal		Zero	Cal		m'	b'
Deep	0.000	0.000	mmho/m	14.508	388.384	mmho/m	1.000	0.000
Medium	0.000	0.000	mmho/m	166.367	504.400	mmho/m	1.000	0.000
LL3		7.500	V		1400.000	Ohm-m		
		0.000	V		20.000	Ohm-m		
		-7.200	V		4000.000	mmho-m		

After Survey Verification

	Readings			Targets			Results	
	Zero	Cal		Zero	Cal		m'	b'
Deep	0.000	0.000	mmho/m	0.000	0.000	mmho/m	0.000	0.000
Medium	0.000	0.000	mmho/m	0.000	0.000	mmho/m	0.000	0.000
LL3		1.000	Ohm-m		1.000	Ohm-m		
		0.000	Ohm-m		0.000	Ohm-m		
		1.000	mmho-m		1.000	mmho-m		

Litho Density Calibration Report

Serial: 003N Model: PRB

Master Calibration

Performed Tue Sep 08 14:14:44 2009

	Background	Magnesium	Aluminum	Sandstone	
Window 1	2042.6	12312.8	4225.8	13758.4	cps
Window 2	1855.8	10134.7	3624.2	11113.1	cps
Window 3	1639.4	6760.2	2716.3	7260.3	cps
Window 4	466.4	469.2	466.1	476.5	cps
Long Space	0.0	8278.9	1768.4	9257.4	cps
Short Space	2.2	2377.3	1544.1	2574.2	cps

Rho	1.7100	2.5900	1.3800	g/cc	
Pe	0.0000	2.5700	1.5500		
Rib Angle	: 44.4	Rib Slope	: 0.979	Density/Spine Ratio	: 0.549
Spine Angle	: 74.4	Spine Slope	: 3.577	Spine Intercept	: -18.8

Before Survey Verification

Performed Wed Dec 31 18:00:00 1969

Window 1	0.0	0.0	0.0	0.0	cps
Window 2	0.0	0.0	0.0	0.0	cps
Window 3	0.0	0.0	0.0	0.0	cps
Window 4	0.0	0.0	0.0	0.0	cps
Long Space	0.0	0.0	0.0	0.0	cps
Short Space	0.0	0.0	0.0	0.0	cps
Measured Rho		0.0000	0.0000	0.0000	g/cc
Measured Correction		0.0000	0.0000	0.0000	g/cc
Measured Pe			0.0000	0.0000	

After Survey Verification

Performed Wed Dec 31 18:00:00 1969

Window 1	0.0	0.0	0.0	0.0	cps
Window 2	0.0	0.0	0.0	0.0	cps
Window 3	0.0	0.0	0.0	0.0	cps
Window 4	0.0	0.0	0.0	0.0	cps
Long Space	0.0	0.0	0.0	0.0	cps
Short Space	0.0	0.0	0.0	0.0	cps
Measured Rho		0.0000	0.0000	0.0000	g/cc
Measured Correction		0.0000	0.0000	0.0000	g/cc
Measured Pe			0.0000	0.0000	

Compensated Neutron Calibration Report

Serial Number: 070808
Tool Model: Probe

PRE-SURVEY VERIFICATION

Detector	Readings	Measured	Target
Short Space	cps		
Long Space	cps	pu	pu

POST-SURVEY VERIFICATION

Detector	Readings	Measured	Target
Short Space	cps		
Long Space	cps	pu	pu

Gamma Ray Calibration Report

Serial Number: 070558
Tool Model: OPEN_GR
Performed: Mon Jun 30 21:53:39 2014

Calibrator Value: 1.0 GAPI

Background Reading: 0.0 cps
Calibrator Reading: 1.0 cps

Sensitivity: 0.2800 GAPI/cps