



**COMPLETION
& PRODUCTION
SERVICES CO.**

**MICRO
LOG**

Company BLURIDGE PETROLEUM CORP.
Well JUENEMANN #2-5
Field WILDCAT
County NORTON
State KANSAS

Company BLUERIDGE PETROLEUM CORPORATION
Well JUENEMANN #2-5
Field WILDCAT
County NORTON State KANSAS

Location: API # : 15-137-20714-0000
1370' FSL & 535' FEL
SW - SE - NE - SE
SEC 5 TWP 3S RGE 24W
Permanent Datum GROUND LEVEL Elevation 2435
Log Measured From KELLY BUSHING 5' A.G.L.
Drilling Measured From KELLY BUSHING
Other Services
CDL/CNL/PE
DIL/SONIC
Elevation
K.B. 2440
D.F. 2438
G.L. 2435

Date	10/29/14
Run Number	TWO
Depth Driller	3780
Depth Logger	3782
Bottom Logged Interval	3766
Top Log Interval	3100
Casing Driller	8 5/8" @ 260'
Casing Logger	258
Bit Size	7 7/8"
Type Fluid in Hole	CHEMICAL MUD
Density / Viscosity	9.4/53
pH / Fluid Loss	10.0/6.0
Source of Sample	FLOWLINE
Rim @ Meas. Temp	1.50 @ 70F
Rmf @ Meas. Temp	1.13 @ 70F
Rmc @ Meas. Temp	1.80 @ 70F
Source of Rmf / Rmc	MEASUREMENT
Rim @ BHT	.921 @ 114F
Time Circulation Stopped	3.5 HOURS
Time Logger on Bottom	3:00 A.M.
Maximum Recorded Temperature	114F
Equipment Number	4854
Location	HAYS, KANSAS
Recorded By	JEFF LUEBBERS
Witnessed By	CLINT MUSGROVE

<<< Fold Here >>>

All interpretations are opinions based on inferences from electrical or other measurements and we cannot and do not guarantee the accuracy or correctness of any interpretation, and we shall not, except in the case of gross or willful negligence on our part, be liable or responsible for any loss, costs, damages, or expenses incurred or sustained by anyone resulting from any interpretation made by any of our officers, agents or employees. These interpretations are also subject to our general terms and conditions set out in our current Price Schedule.

Comments

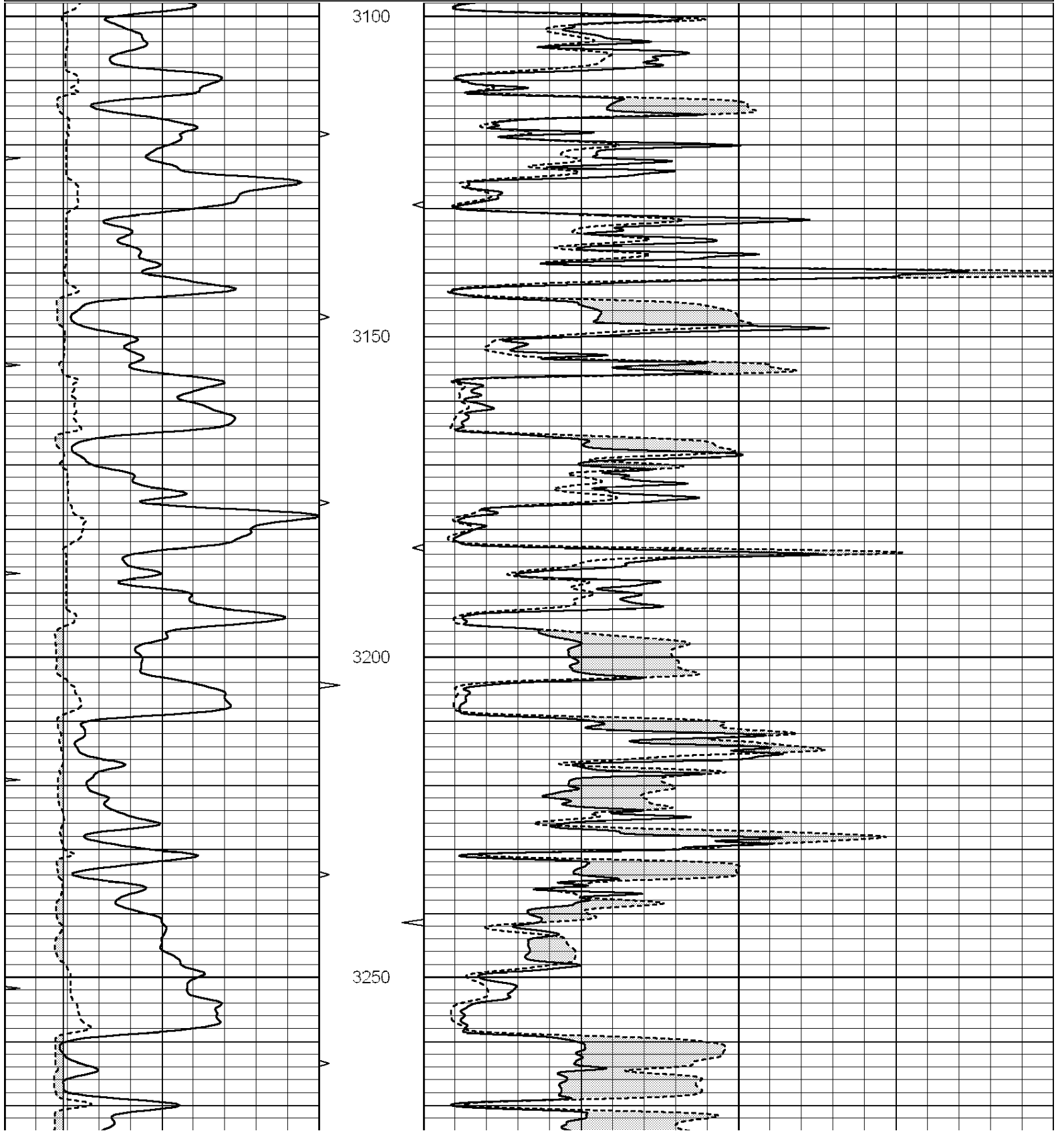
THANK YOU FOR USING "NABORS" HAYS, KANSAS (785) 628-6395
DIRECTIONS
NORTON, KS., 6W. ON HWY 36, 1/2S., W. INTO

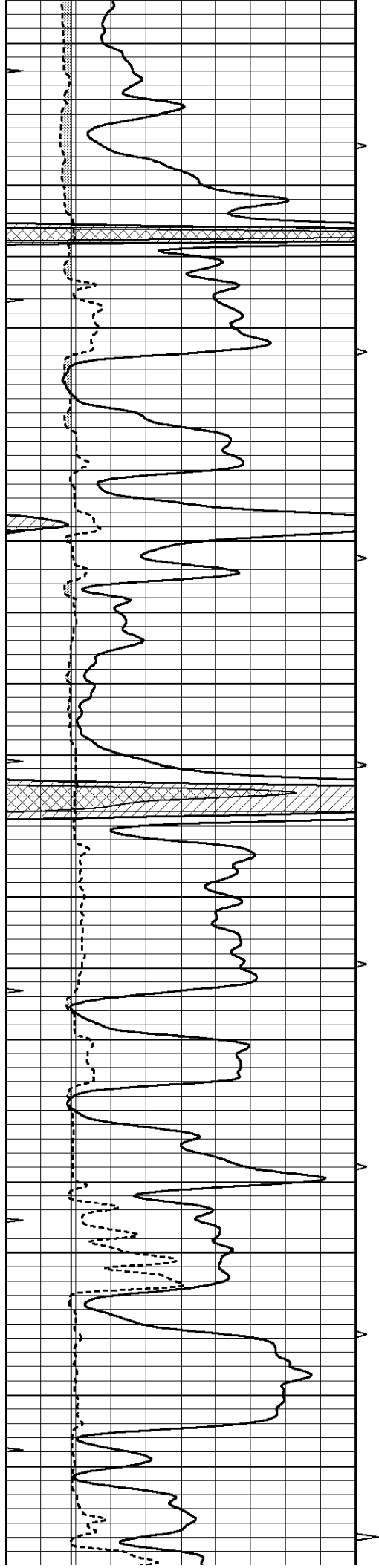


MAIN SECTION

Database File: 25904pe.db
 Dataset Pathname: pass6.2
 Presentation Format: micro
 Dataset Creation: Wed Oct 29 05:43:12 2014 by Calc SOC 120430
 Charted by: Depth in Feet scaled 1:240

0	GAMMA RAY (GAPI)	150	ABHV	0	MEL1.5 (Ohm-m)	40
6	CALIPER (in)	16	10 (ft3)	0	MEL 20 (Ohm-m)	40
0	MINMK	20	TBHV			
			0 (ft3)	10		



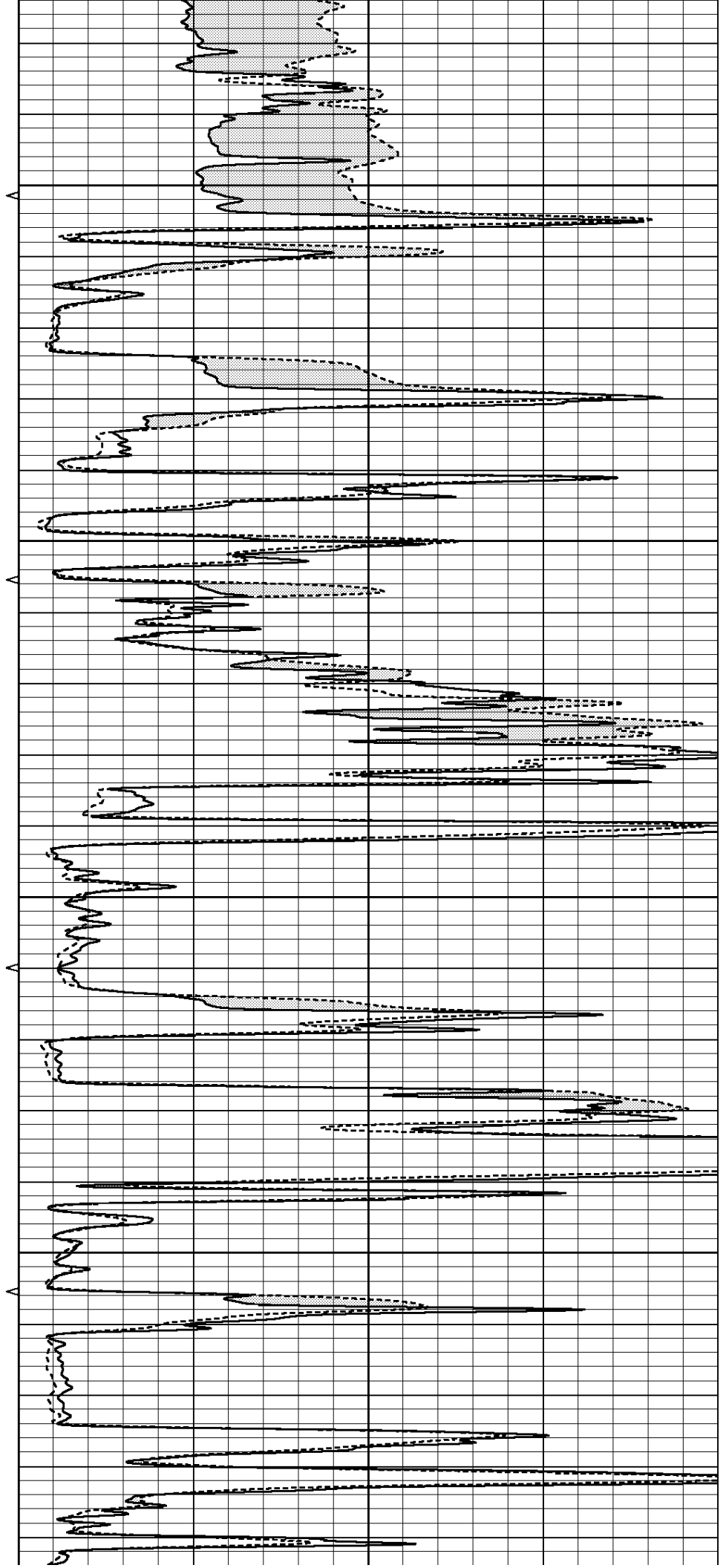


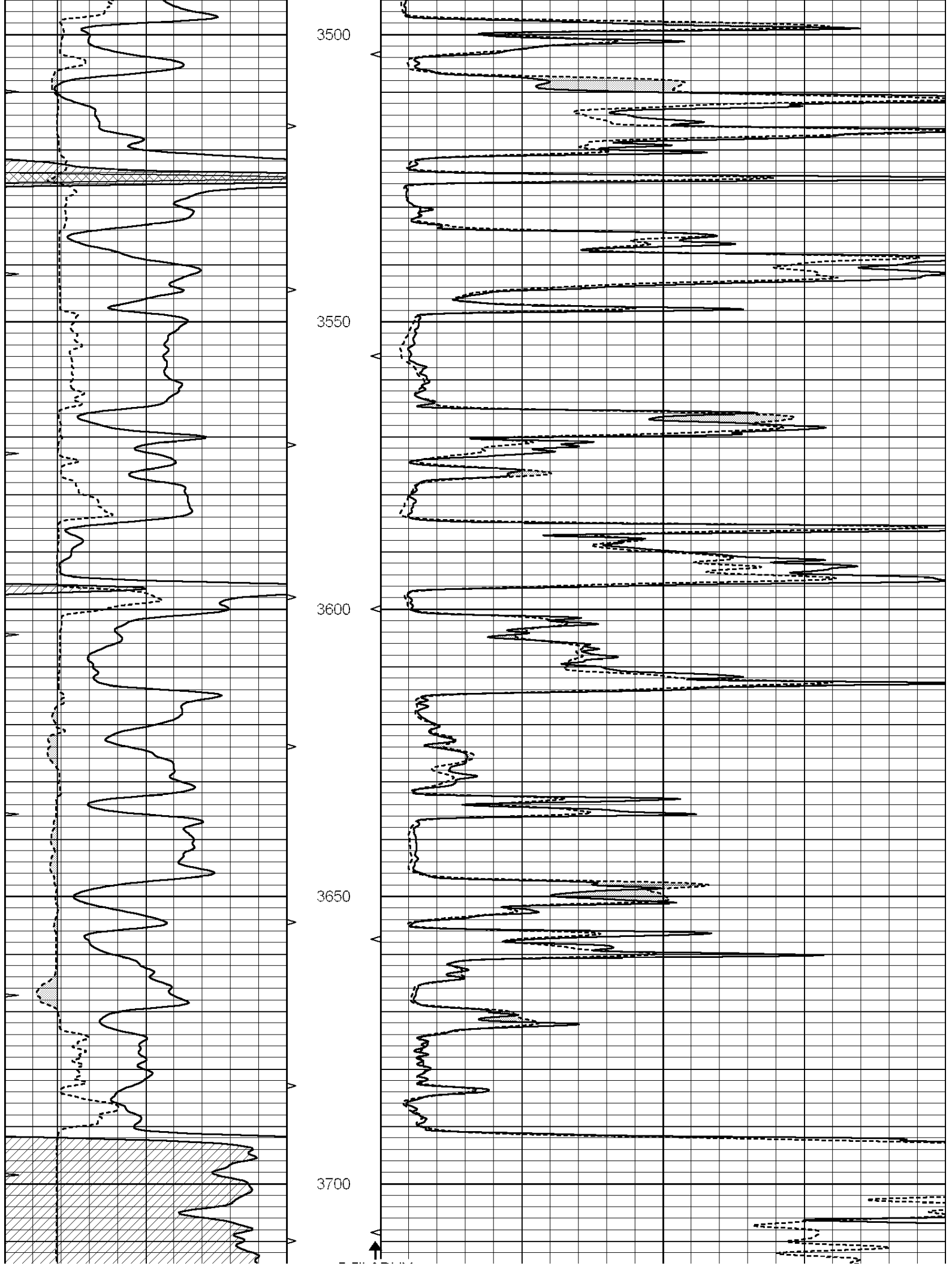
3300

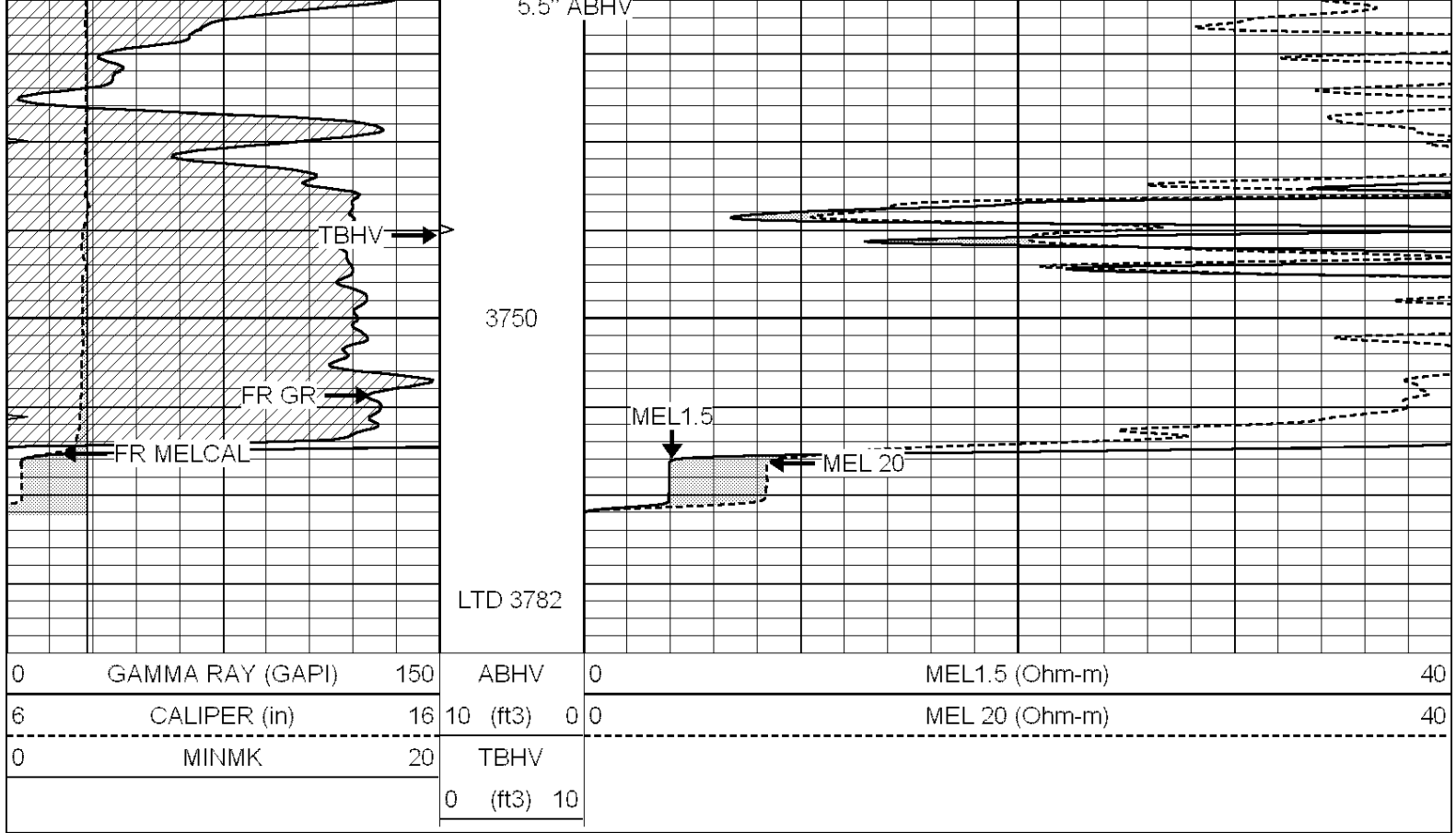
3350

3400

3450







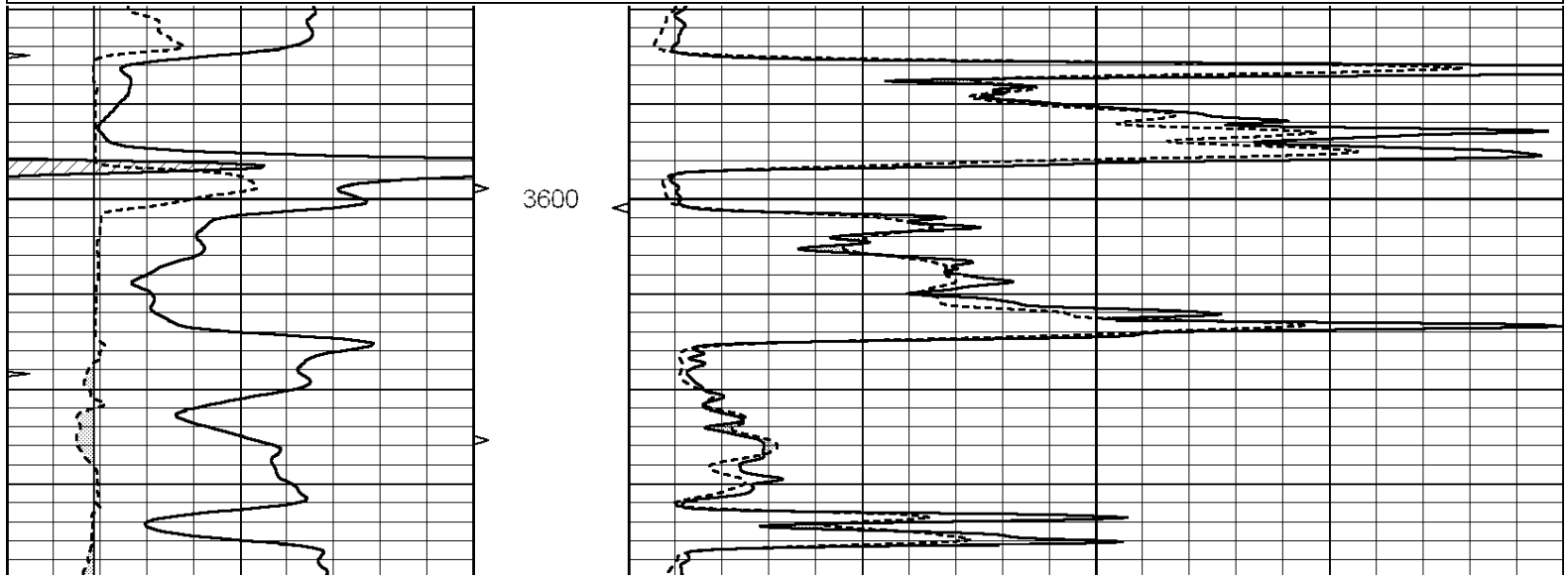
0	GAMMA RAY (GAPI)	150	ABHV	0	MEL1.5 (Ohm-m)	40
6	CALIPER (in)	16	10 (ft3) 0 0	0	MEL 20 (Ohm-m)	40
0	MINMK	20	TBHV			
			0 (ft3) 10			

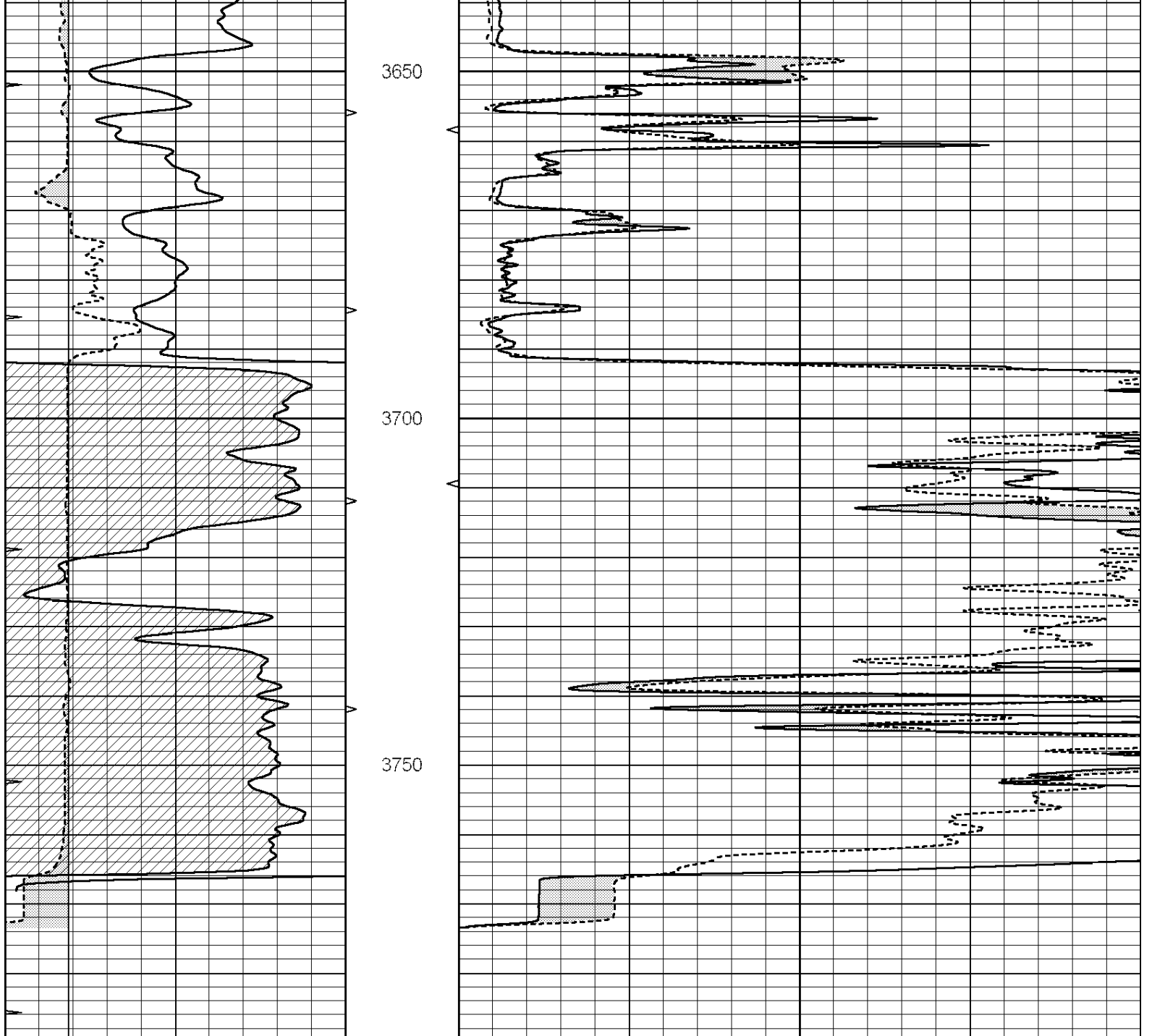


REPEAT SECTION

Database File: 25904pe.db
 Dataset Pathname: pass5.4
 Presentation Format: micro
 Dataset Creation: Wed Oct 29 05:40:02 2014 by Calc SOC 120430
 Charted by: Depth in Feet scaled 1:240

0	GAMMA RAY (GAPI)	150	ABHV	0	MEL1.5 (Ohm-m)	40
6	CALIPER (in)	16	10 (ft3) 0 0	0	MEL 20 (Ohm-m)	40
0	MINMK	20	TBHV			
			0 (ft3) 10			





0	GAMMA RAY (GAPI)	150	ABHV	0	MEL1.5 (Ohm-m)	40
6	CALIPER (in)	16	10 (ft3)	0	MEL 20 (Ohm-m)	40
0	MINMK	20	TBHV			
			0 (ft3)	10		

Calibration Report

Database File: 25904pe.db
 Dataset Pathname: pass6.2
 Dataset Creation: Wed Oct 29 05:43:12 2014 by Calc SOC 120430

MICRO Calibration Report

Serial Number: 070910
 Tool Model: ProbeN
 Performed: Wed Sep 24 01:14:56 2014

Caliper Calibration: Gain=4.092 Offset=1.651

Low Cal High Cal

References	Low Cal 8.000	High Cal 15.000
Readings	1.552	3.263
1.5" Calibration:	Gain=25.000	Offset=0.000
References	Low Cal 0.000	High Cal 20.000
Readings	0.000	1.216
2" Calibration:	Gain=52.000	Offset=-1.200
References	Low Cal 0.000	High Cal 20.000
Readings	0.002	1.053
Gamma Ray Calibration Report		
Serial Number:	070559	
Tool Model:	OPEN_GR	
Performed:	Thu Oct 23 00:20:35 2014	
Calibrator Value:	1.0	GAPI
Background Reading:	0.0	cps
Calibrator Reading:	1.0	cps
Sensitivity:	0.2200	GAPI/cps