



**COMPLETION
& PRODUCTION
SERVICES CO.**

**COMPENSATED
DENSITY / NEUTRON
PE LOG**

Company BLURIDGE PETROLEUM CORP.
Well JUENEMANN #2-5
Field WILDCAT
County NORTON
State KANSAS

Company BLUERIDGE PETROLEUM CORPORATION
Well JUENEMANN #2-5
Field WILDCAT
County NORTON State KANSAS

Location: API # : 15-137-20714-0000
1370' FSL & 535' FEL
SW - SE - NE - SE
SEC 5 TWP 3S RGE 24W
Permanent Datum GROUND LEVEL Elevation 2435
Log Measured From KELLY BUSHING 5' A.G.L.
Drilling Measured From KELLY BUSHING
Other Services
DIL/MEL
SONIC
Elevation
K.B. 2440
D.F. 2438
G.L. 2435

Date	10/29/14		
Run Number	ONE		
Depth Driller	3780		
Depth Logger	3782		
Bottom Logged Interval	3758		
Top Log Interval	3100		
Casing Driller	8 5/8"@260'		
Casing Logger	258		
Bit Size	7 7/8"		
Type Fluid in Hole	CHEMICAL MUD		
Density / Viscosity	9.4/53		
pH / Fluid Loss	10.0/6.0		
Source of Sample	FLOWLINE	CHLORIDES 800 PPM	
Rim @ Meas. Temp	1.50@70F		
Rmf @ Meas. Temp	1.13@70F		
Rmc @ Meas. Temp	1.80@70F		
Source of Rmf / Rmc	MEASUREMENT		
Rim @ BHT	.921@114F		
Time Circulation Stopped	2 HOURS		
Time Logger on Bottom	3:00 A.M.		
Maximum Recorded Temperature	114F		
Equipment Number	4854		
Location	HAYS, KANSAS		
Recorded By	JEFF LUEBBERS		
Witnessed By	CLINT MUSGROVE		

<<< Fold Here >>>

All interpretations are opinions based on inferences from electrical or other measurements and we cannot and do not guarantee the accuracy or correctness of any interpretation, and we shall not, except in the case of gross or willful negligence on our part, be liable or responsible for any loss, costs, damages, or expenses incurred or sustained by anyone resulting from any interpretation made by any of our officers, agents or employees. These interpretations are also subject to our general terms and conditions set out in our current Price Schedule.

Comments

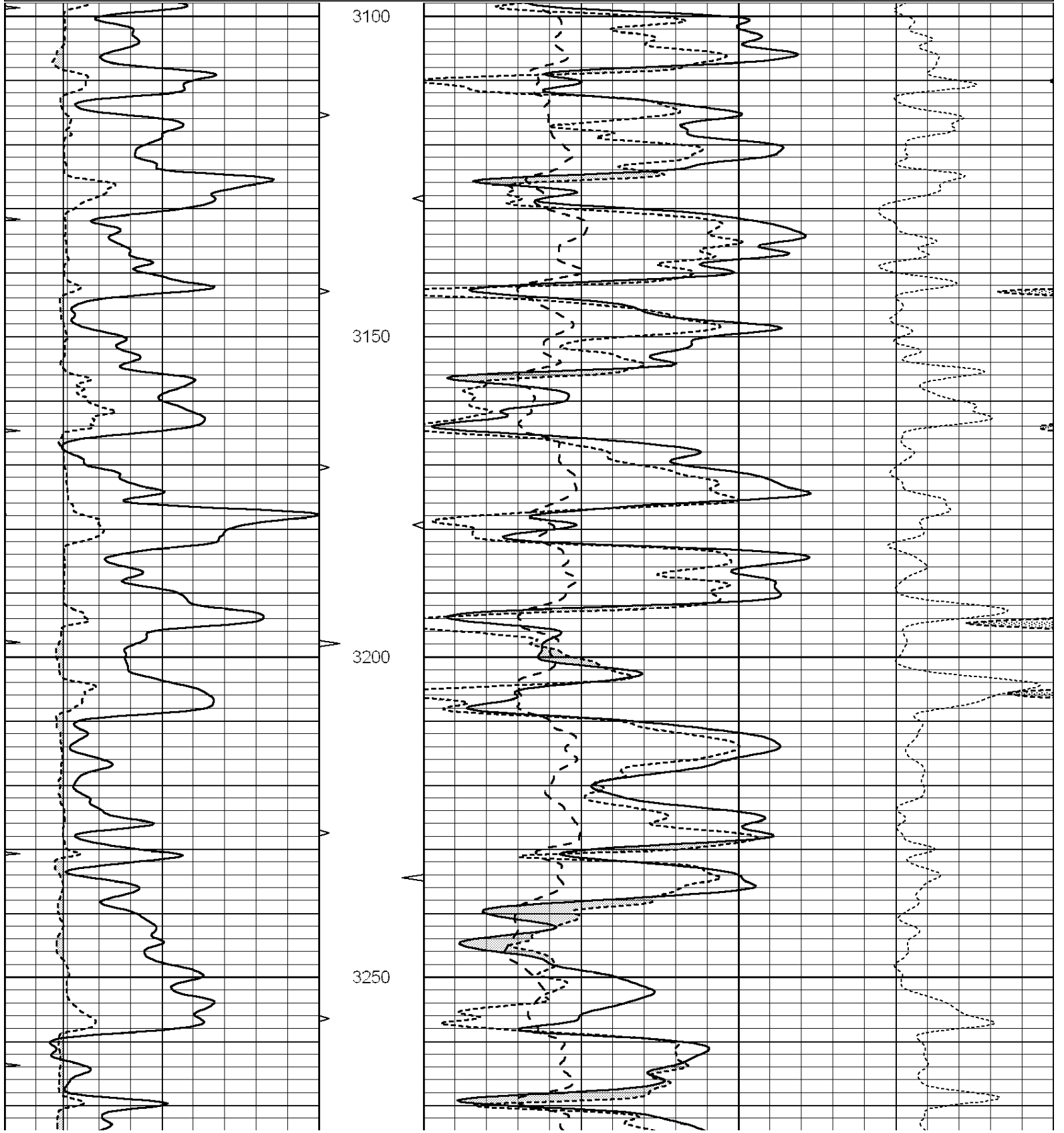
THANK YOU FOR USING "NABORS" HAYS, KANSAS (785) 628-6395
DIRECTIONS
NORTON, KS., 6W. ON HWY 36, 1/2S., W. INTO

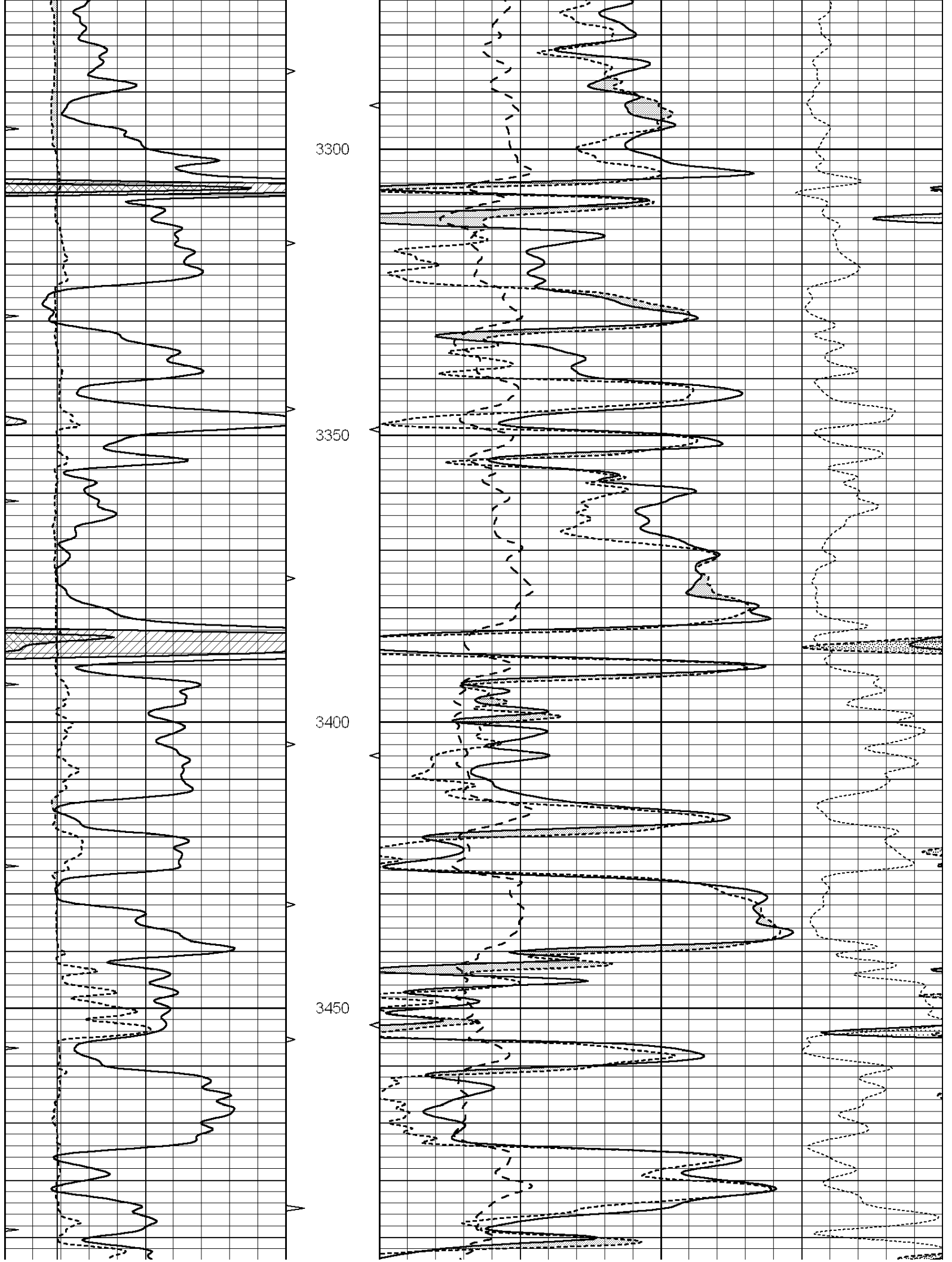


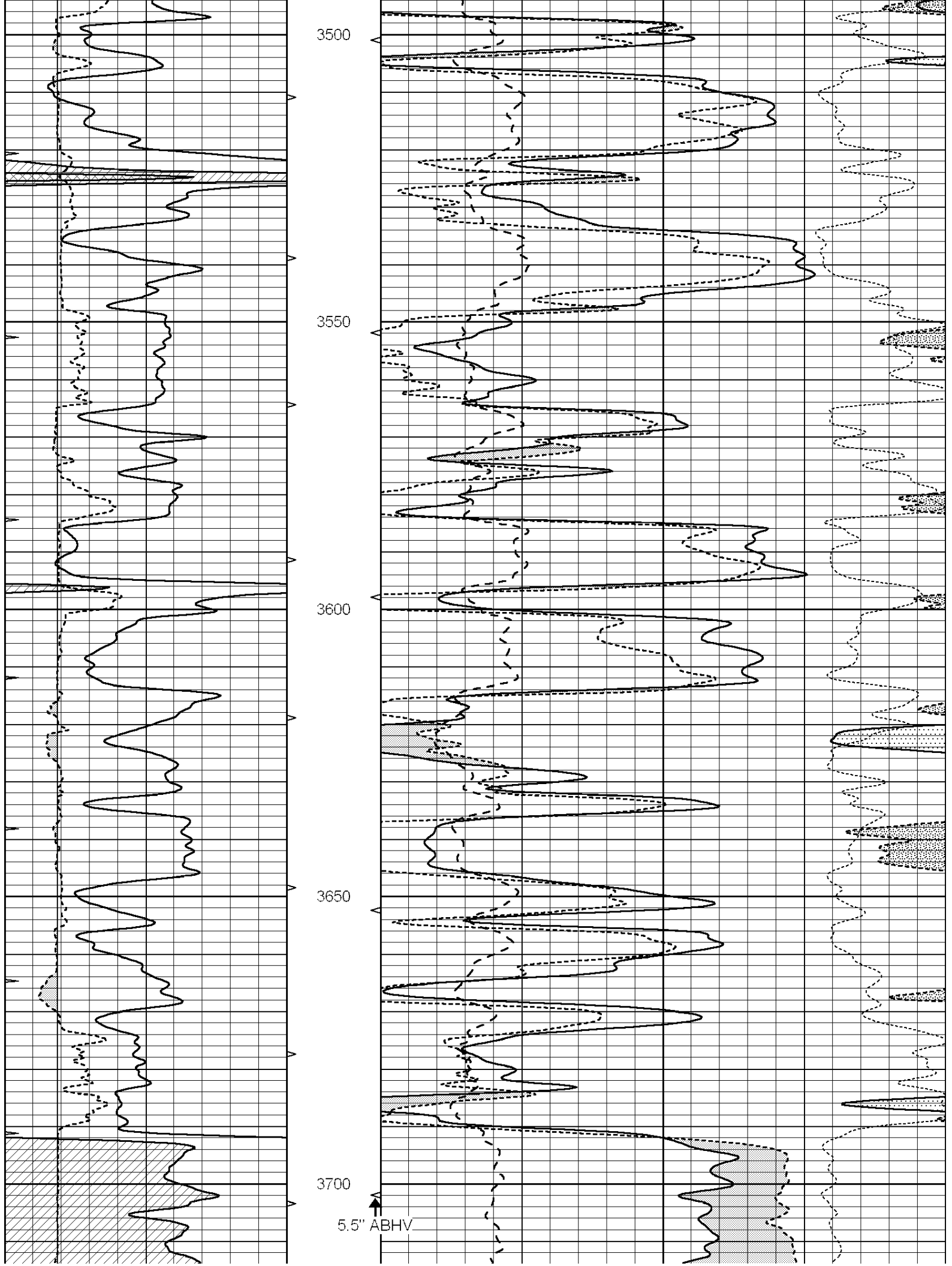
MAIN SECTION

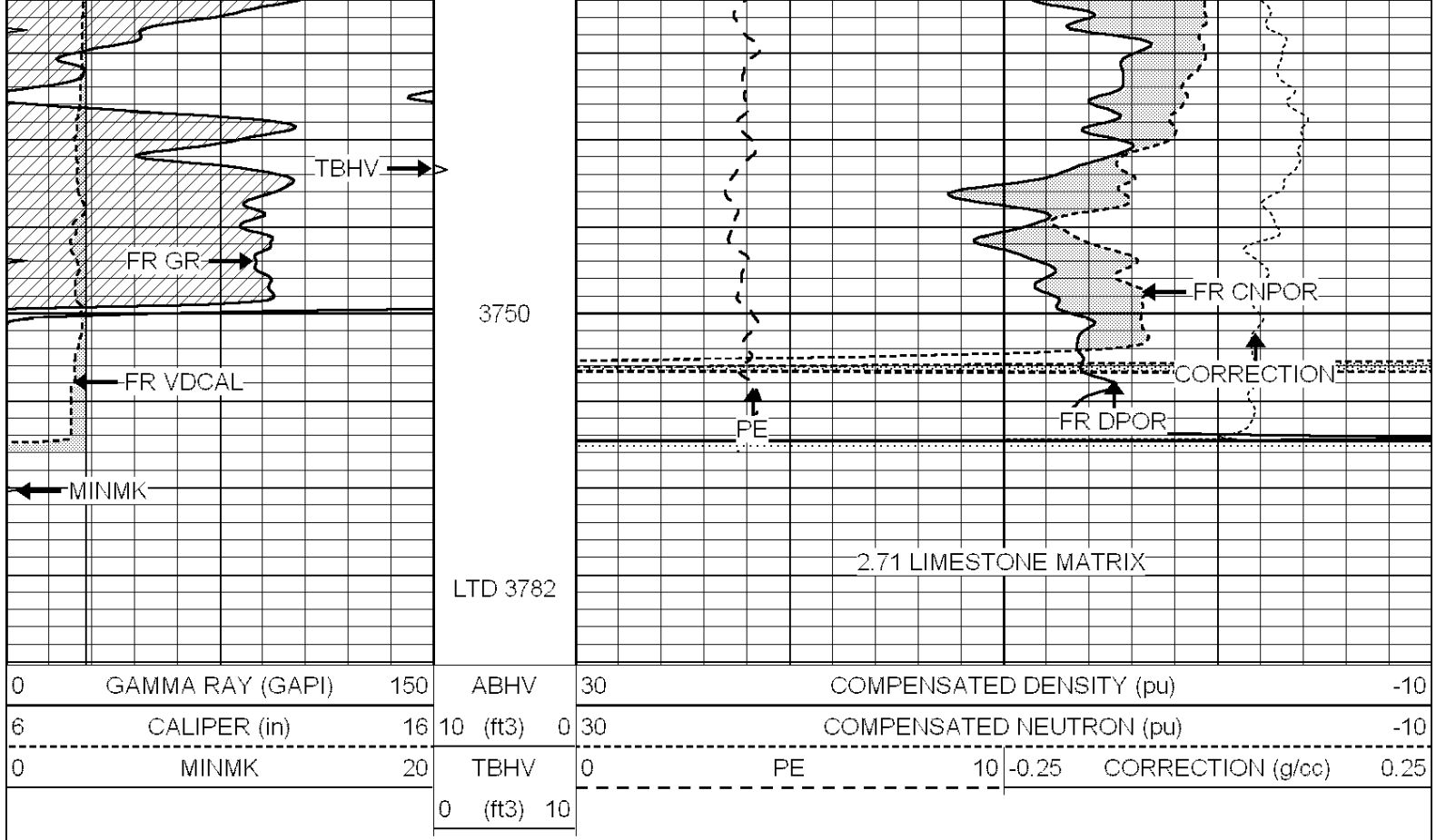
Database File: 25904pe.db
 Dataset Pathname: pass3.7
 Presentation Format: ldt_neu
 Dataset Creation: Wed Oct 29 04:14:58 2014
 Charted by: Depth in Feet scaled 1:240

0	GAMMA RAY (GAPI)	150	ABHV	30	COMPENSATED DENSITY (pu)		-10
6	CALIPER (in)	16	10 (ft3)	0	COMPENSATED NEUTRON (pu)		-10
0	MINMK	20	TBHV	0	PE	10	-0.25 CORRECTION (g/cc) 0.25
			0 (ft3)	10			





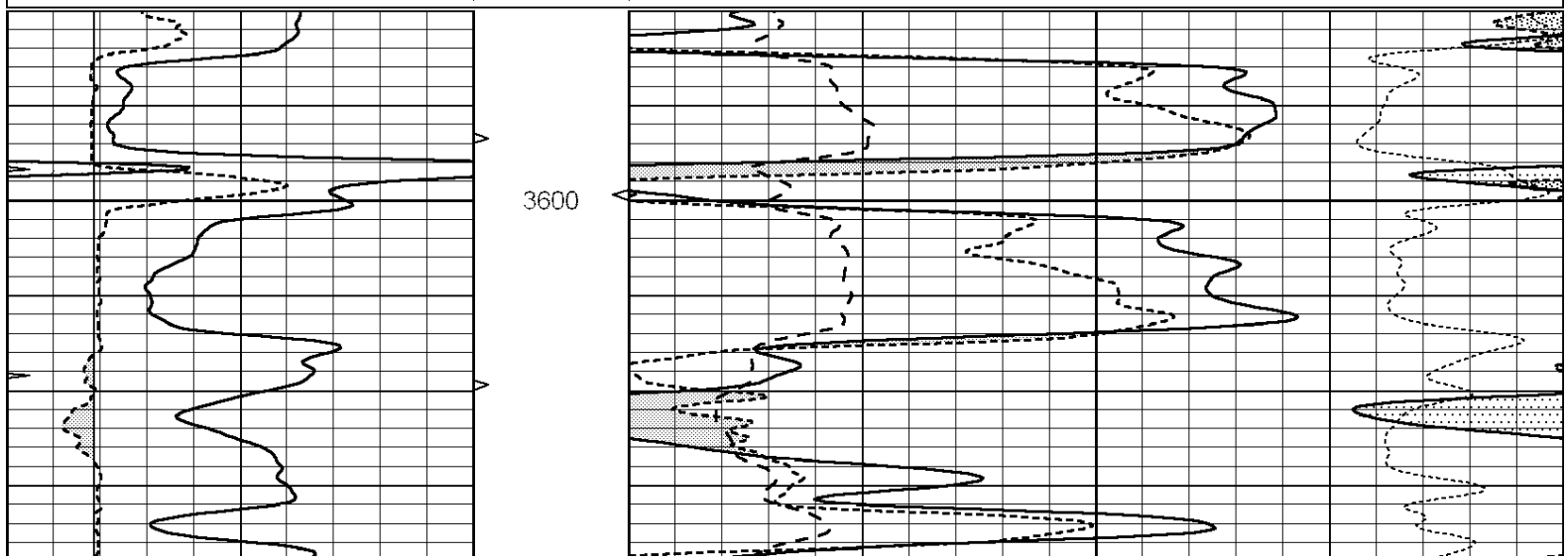


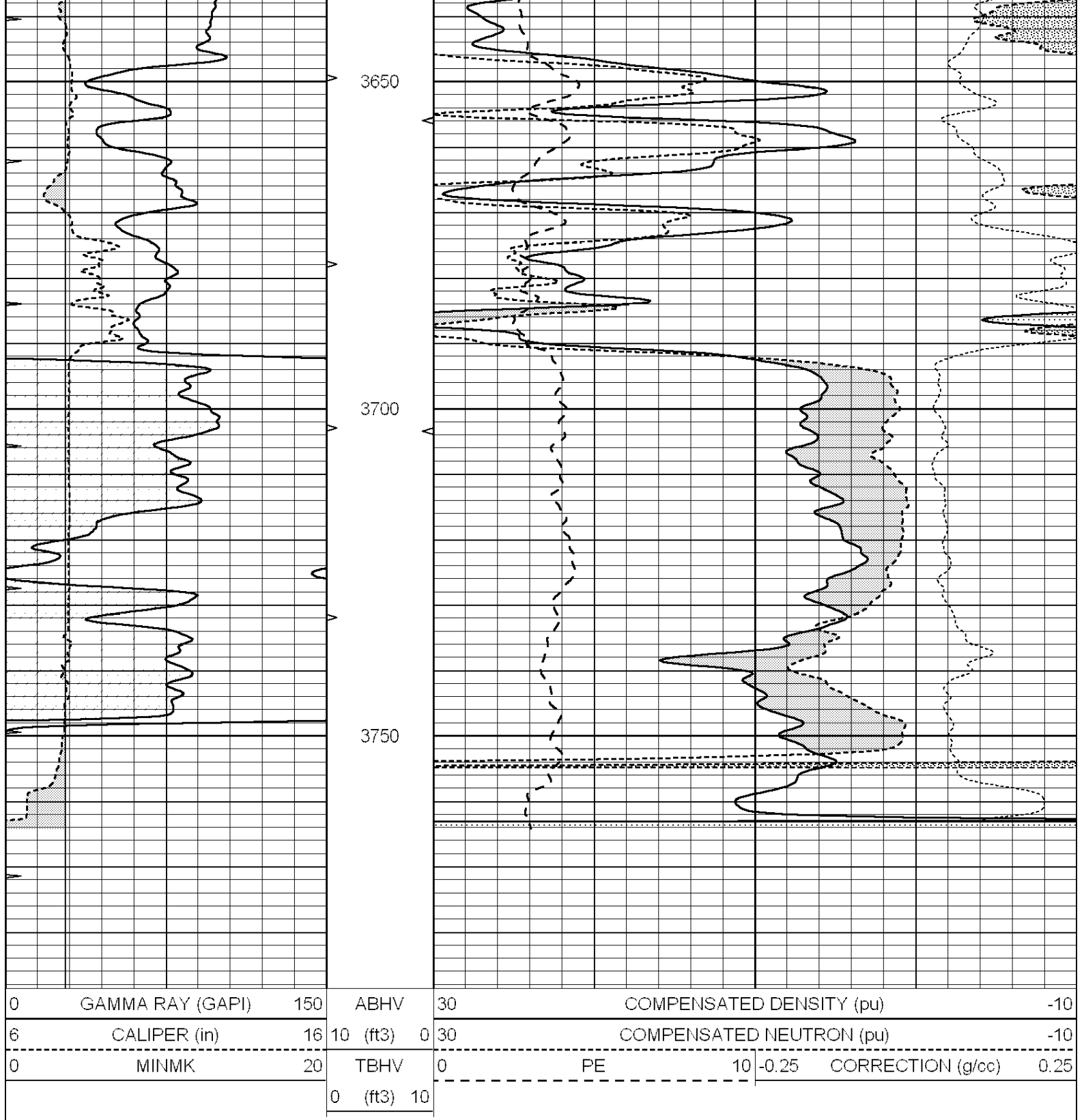


REPEAT SECTION

Database File: 25904pe.db
 Dataset Pathname: pass2.2
 Presentation Format: ldt_neu
 Dataset Creation: Wed Oct 29 03:20:00 2014
 Charted by: Depth in Feet scaled 1:240

0	GAMMA RAY (GAPI)	150	ABHV	30	COMPENSATED DENSITY (pu)	-10			
6	CALIPER (in)	16	10 (ft3)	0	30	COMPENSATED NEUTRON (pu)	-10		
0	MINMK	20	TBHV	0	PE	10	-0.25	CORRECTION (g/cc)	0.25
			0 (ft3)	10					





Calibration Report

Database File: 25904pe.db
 Dataset Pathname: pass3.7
 Dataset Creation: Wed Oct 29 04:14:58 2014

Dual Induction Calibration Report

Serial-Model: PROBE9-DILG
 Surface Cal Performed: Thu Oct 16 05:30:22 2014
 Downhole Cal Performed: Mon Jul 28 12:02:56 2008
 After Survey Verification Performed: Mon Jul 28 12:02:56 2008

Readings				References			Results	
Loop:	Air	Loop		Air	Loop		m	b
Deep	-0.014	0.629	V	0.000	400.000	mmho/m	670.000	-16.000
Medium	0.039	0.728	V	0.000	464.000	mmho/m	670.000	-32.000
Internal:	Zero	Cal		Zero	Cal		m	b
Deep	0.011	0.610	V	0.000	400.000	mmho/m	667.135	-7.256
Medium	0.005	0.712	V	0.000	464.000	mmho/m	655.677	-3.102

Downhole Calibration								
Readings				References			Results	
	Zero	Cal		Zero	Cal		m'	b'
Deep	0.000	0.000	mmho/m	14.508	388.384	mmho/m	1.000	0.000
Medium	0.000	0.000	mmho/m	166.367	504.400	mmho/m	1.000	0.000
LL3		7.500	V		1400.000	Ohm-m		
		0.000	V		20.000	Ohm-m		
		-7.200	V		4000.000	mmho-m		

After Survey Verification								
Readings				Targets			Results	
	Zero	Cal		Zero	Cal		m'	b'
Deep	0.000	0.000	mmho/m	0.000	0.000	mmho/m	0.000	0.000
Medium	0.000	0.000	mmho/m	0.000	0.000	mmho/m	0.000	0.000
LL3		1.000	Ohm-m		1.000	Ohm-m		
		0.000	Ohm-m		0.000	Ohm-m		
		1.000	mmho-m		1.000	mmho-m		

Litho Density Calibration Report
Serial: 003N Model: PRB

Master Calibration				Performed Tue Sep 08 14:14:44 2009				
	Background	Magnesium		Aluminum		Sandstone		
Window 1	2042.6	12312.8		4225.8		13758.4		cps
Window 2	1855.8	10134.7		3624.2		11113.1		cps
Window 3	1639.4	6760.2		2716.3		7260.3		cps
Window 4	466.4	469.2		466.1		476.5		cps
Long Space	0.0	8278.9		1768.4		9257.4		cps
Short Space	2.2	2377.3		1544.1		2574.2		cps
Rho		1.7100		2.5900		1.3800		g/cc
Pe		0.0000		2.5700		1.5500		
Rib Angle	: 44.4	Rib Slope	: 0.979	Density/Spine Ratio		: 0.549		
Spine Angle	: 74.4	Spine Slope	: 3.577	Spine Intercept		: -18.8		

Before Survey Verification				Performed Wed Dec 31 18:00:00 1969				
Window 1	0.0	0.0		0.0		0.0		cps
Window 2	0.0	0.0		0.0		0.0		cps
Window 3	0.0	0.0		0.0		0.0		cps
Window 4	0.0	0.0		0.0		0.0		cps
Long Space	0.0	0.0		0.0		0.0		cps
Short Space	0.0	0.0		0.0		0.0		cps
Measured Rho		0.0000		0.0000		0.0000		g/cc
Measured Correction		0.0000		0.0000		0.0000		g/cc
Measured Pe				0.0000		0.0000		

After Survey Verification Performed Wed Dec 31 18:00:00 1969

Window 1	0.0	0.0	0.0	0.0	cps
Window 2	0.0	0.0	0.0	0.0	cps
Window 3	0.0	0.0	0.0	0.0	cps
Window 4	0.0	0.0	0.0	0.0	cps
Long Space	0.0	0.0	0.0	0.0	cps
Short Space	0.0	0.0	0.0	0.0	cps
Measured Rho		0.0000	0.0000	0.0000	g/cc
Measured Correction		0.0000	0.0000	0.0000	g/cc
Measured Pe			0.0000	0.0000	

Compensated Neutron Calibration Report

Serial Number: 070808
Tool Model: Probe

PRE-SURVEY VERIFICATION

Detector	Readings	Measured	Target
Short Space	cps		
Long Space	cps	pu	pu

POST-SURVEY VERIFICATION

Detector	Readings	Measured	Target
Short Space	cps		
Long Space	cps	pu	pu

Gamma Ray Calibration Report

Serial Number: 070558
Tool Model: OPEN_GR
Performed: Mon Jun 30 21:53:39 2014

Calibrator Value: 1.0 GAPI

Background Reading: 0.0 cps
Calibrator Reading: 1.0 cps

Sensitivity: 0.2800 GAPI/cps