



**COMPLETION  
& PRODUCTION  
SERVICES CO.**

**SONIC  
LOG**

Company LOTUS OPERATING COMPANY, LLC.  
Well #1 ACHENBACH "B"  
Field STRANATHAN / HARDTNER  
County BARBER  
State KANSAS

Company LOTUS OPERATING COMPANY, LLC.  
Well #1 ACHENBACH "B"  
Field STRANATHAN / HARDTNER  
County BARBER State KANSAS

Location: API # : 15-007-24230-0000  
NE - NE - NW  
Permanent Datum GROUND LEVEL Elevation 1477  
Log Measured From KELLY BUSHING 13' A.G.L.  
Drilling Measured From KELLY BUSHING  
Other Services  
CDL/CNL/PE  
DIL/MEL/FF  
Elevation  
K.B. 1490  
D.F. 1488  
G.L. 1477

Date	9/30/14
Run Number	TWO
Depth Driller	5547
Depth Logger	5547
Bottom Logged Interval	5539
Top Log Interval	3800
Casing Driller	10 3/4"@300'
Casing Logger	300
Bit Size	7 7/8"
Type Fluid in Hole	CHEMICAL MUD
Density / Viscosity	9.4/42
pH / Fluid Loss	11.0/9.0
Source of Sample	FLOWLINE
Rim @ Meas. Temp	.650@80F
Rmf @ Meas. Temp	.488@80F
Rmc @ Meas. Temp	.780@80F
Source of Rmf / Rmc	MEASUREMENT
Rim @ BHT	.400@130F
Time Circulation Stopped	8.5 HOURS
Time Logger on Bottom	11:00 P.M.
Maximum Recorded Temperature	130F
Equipment Number	4854
Location	HAYS, KANSAS
Recorded By	JEFF LUEBBERS
Witnessed By	TIM HELLMAN

<<< Fold Here >>>

All interpretations are opinions based on inferences from electrical or other measurements and we cannot and do not guarantee the accuracy or correctness of any interpretation, and we shall not, except in the case of gross or willful negligence on our part, be liable or responsible for any loss, costs, damages, or expenses incurred or sustained by anyone resulting from any interpretation made by any of our officers, agents or employees. These interpretations are also subject to our general terms and conditions set out in our current Price Schedule.

**Comments**

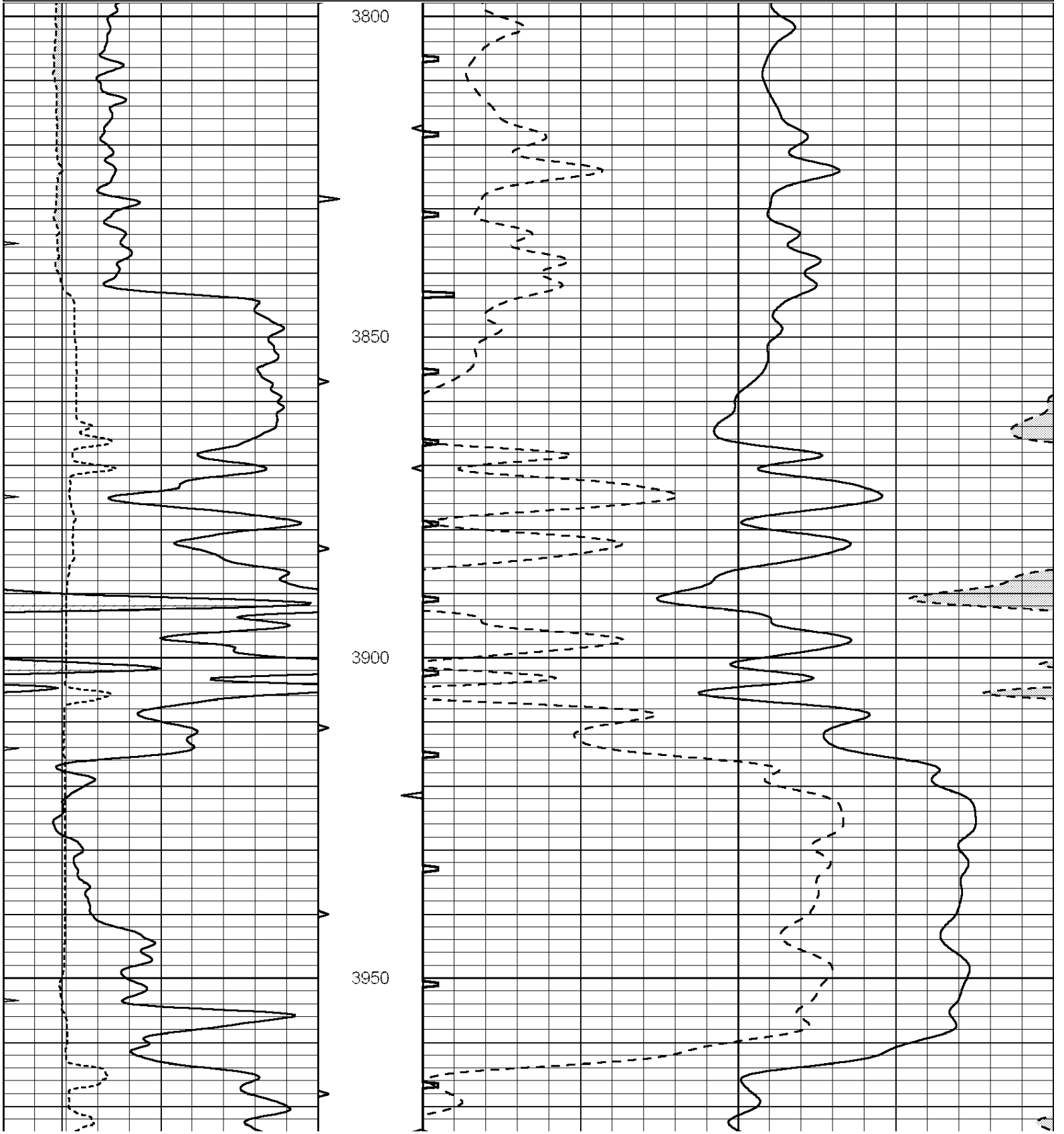
THANK YOU FOR USING "NABORS" HAYS, KANSAS (785) 628-6395  
DIRECTIONS  
HARDTNER, KS., 3W. ON BLKTOP JUST PAST "GYP HILL RD.", N. INTO PAST FARM HOUSE, FOLLOW  
TRAIL 1/2 MILE, W. & N.

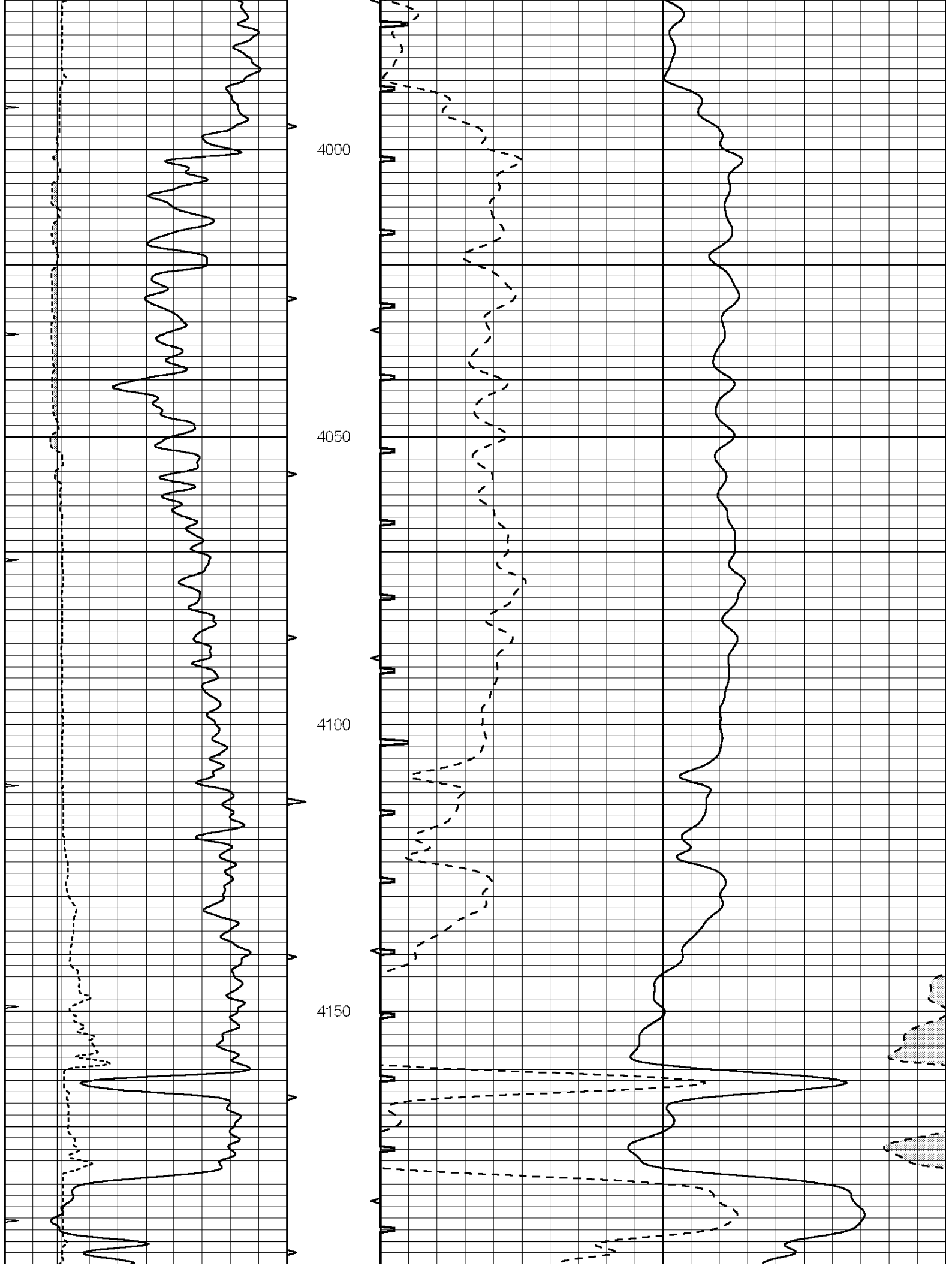


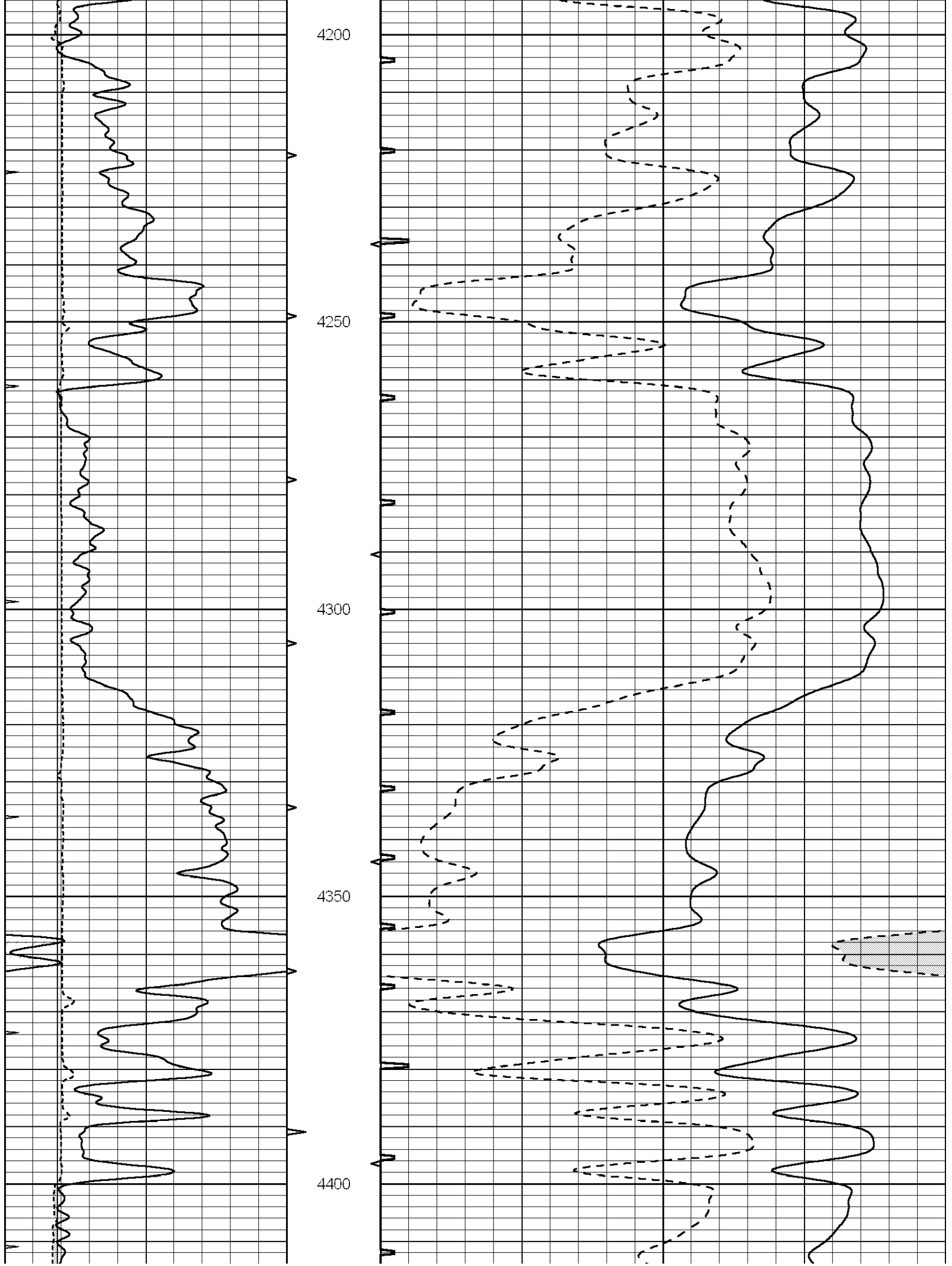
**MAIN SECTION**

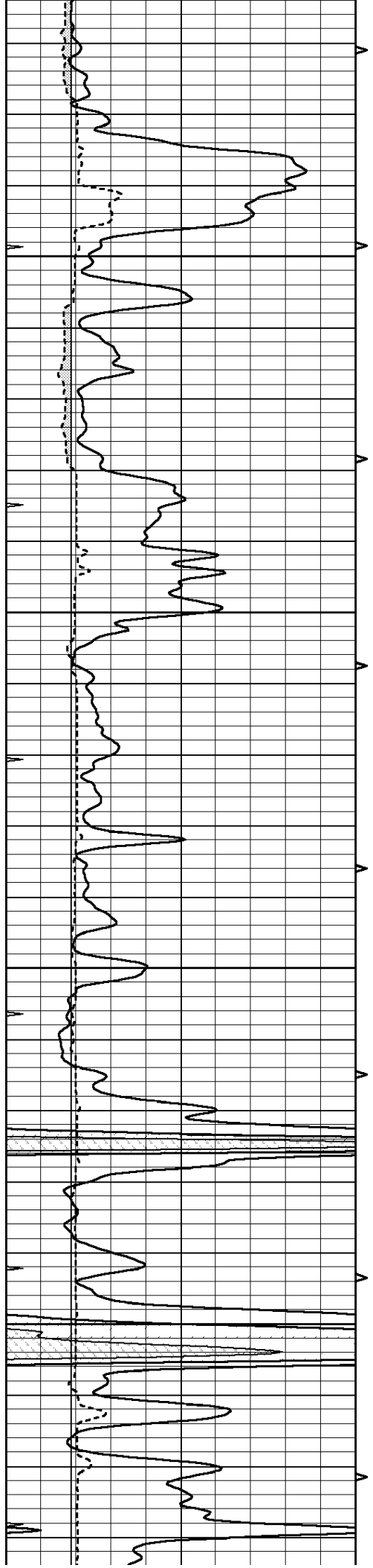
Database File: 25888pe.db  
 Dataset Pathname: pass7.3  
 Presentation Format: slt  
 Dataset Creation: Wed Oct 01 03:26:04 2014 by Calc SOC 120430  
 Charted by: Depth in Feet scaled 1:240

0	GAMMA RAY (GAPI)	150	ABHV	140	DELTA TIME (usec/ft)	40
6	CALIPER (in)	16	10 (ft3)	0	30	SONIC POROSITY (pu)
0	MINMK	20	TBHV	0	ITT (msec)	20
			0 (ft3)	10		







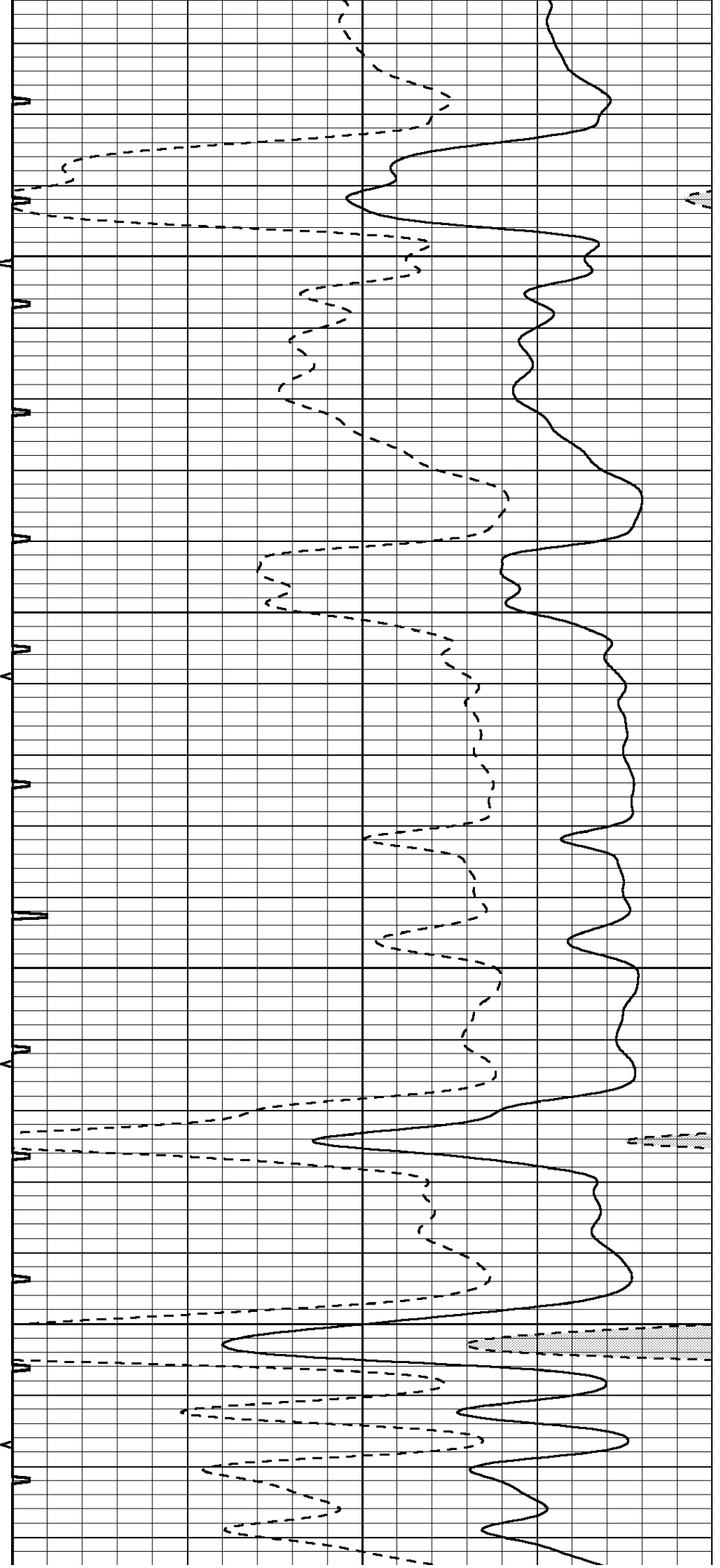


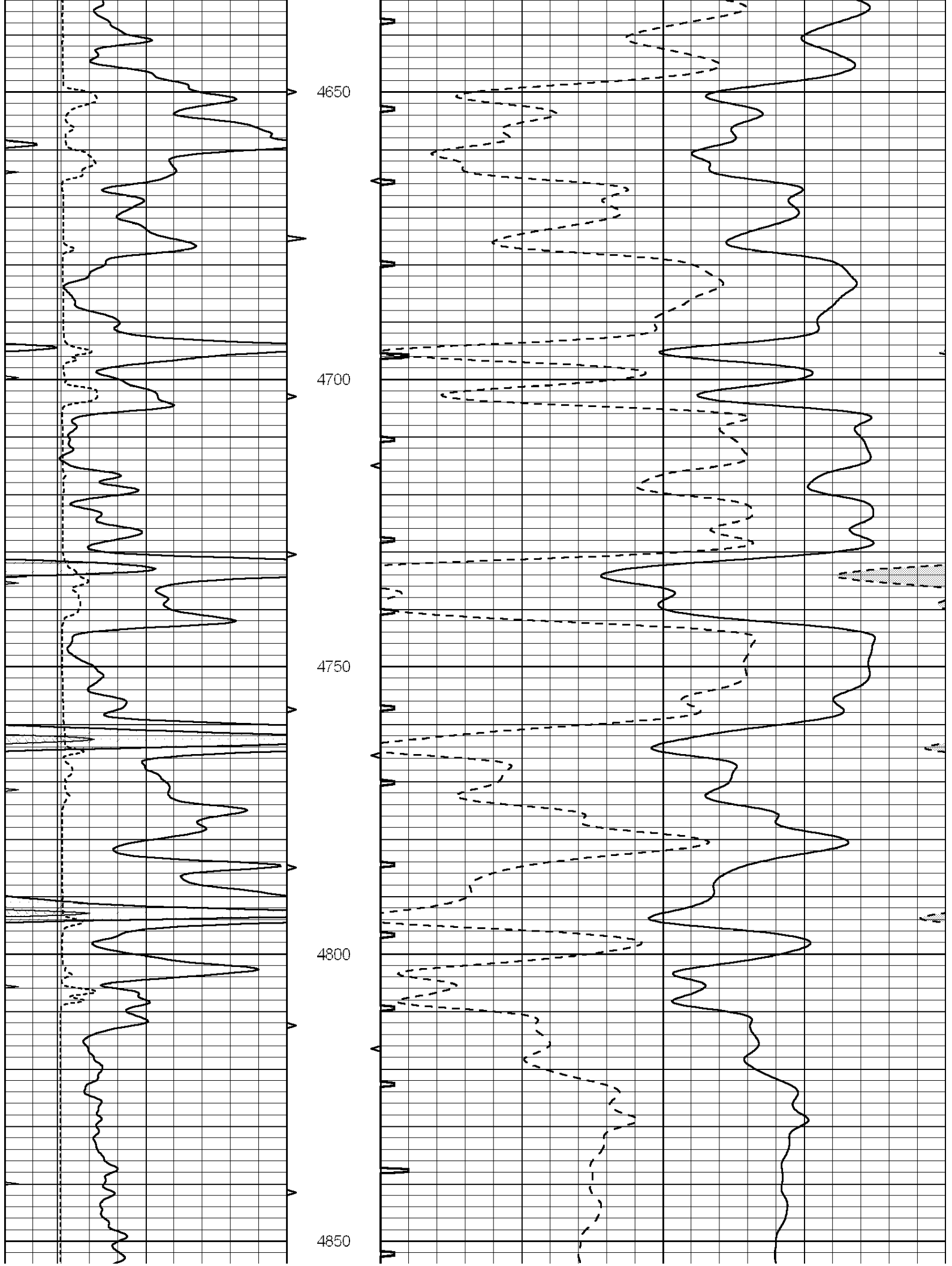
4450

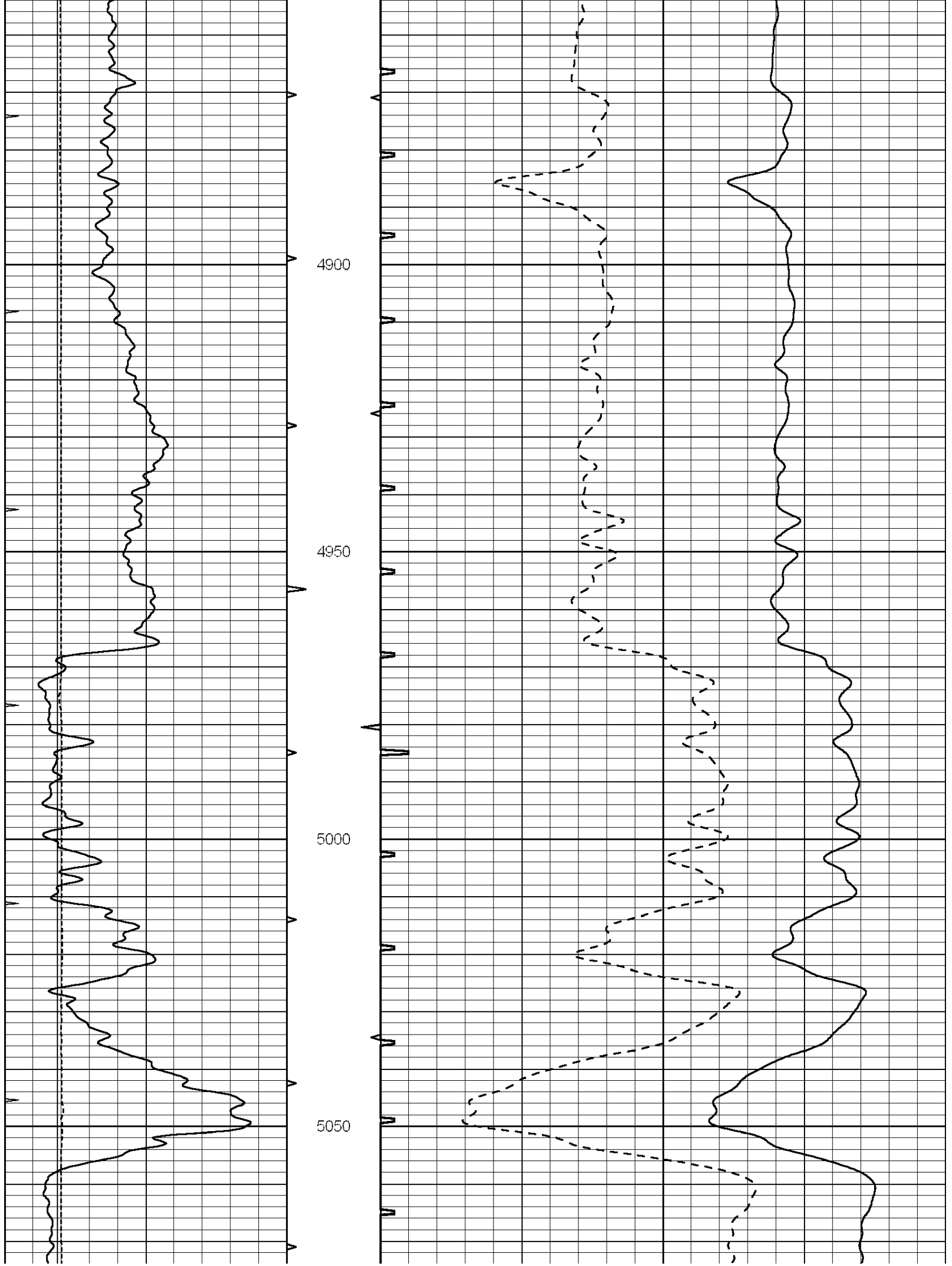
4500

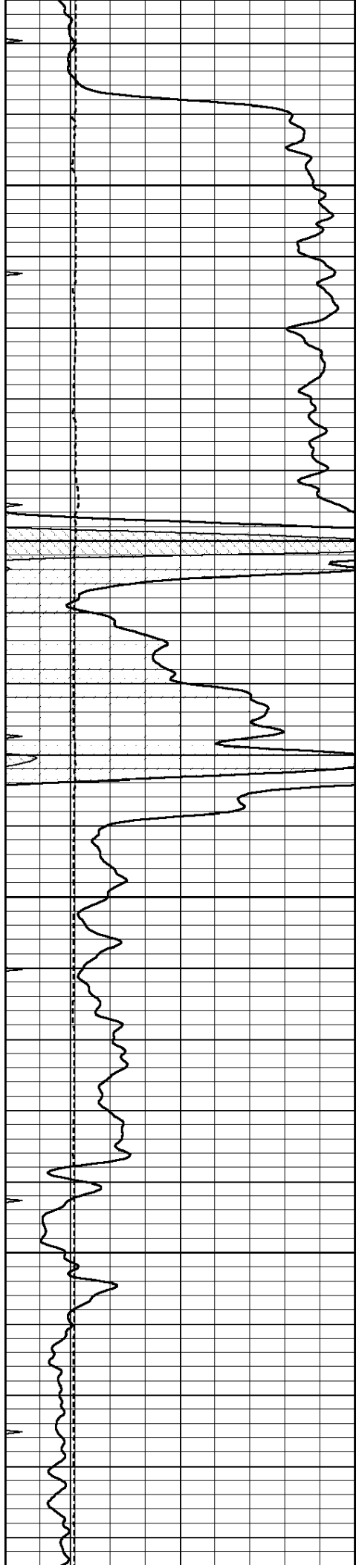
4550

4600







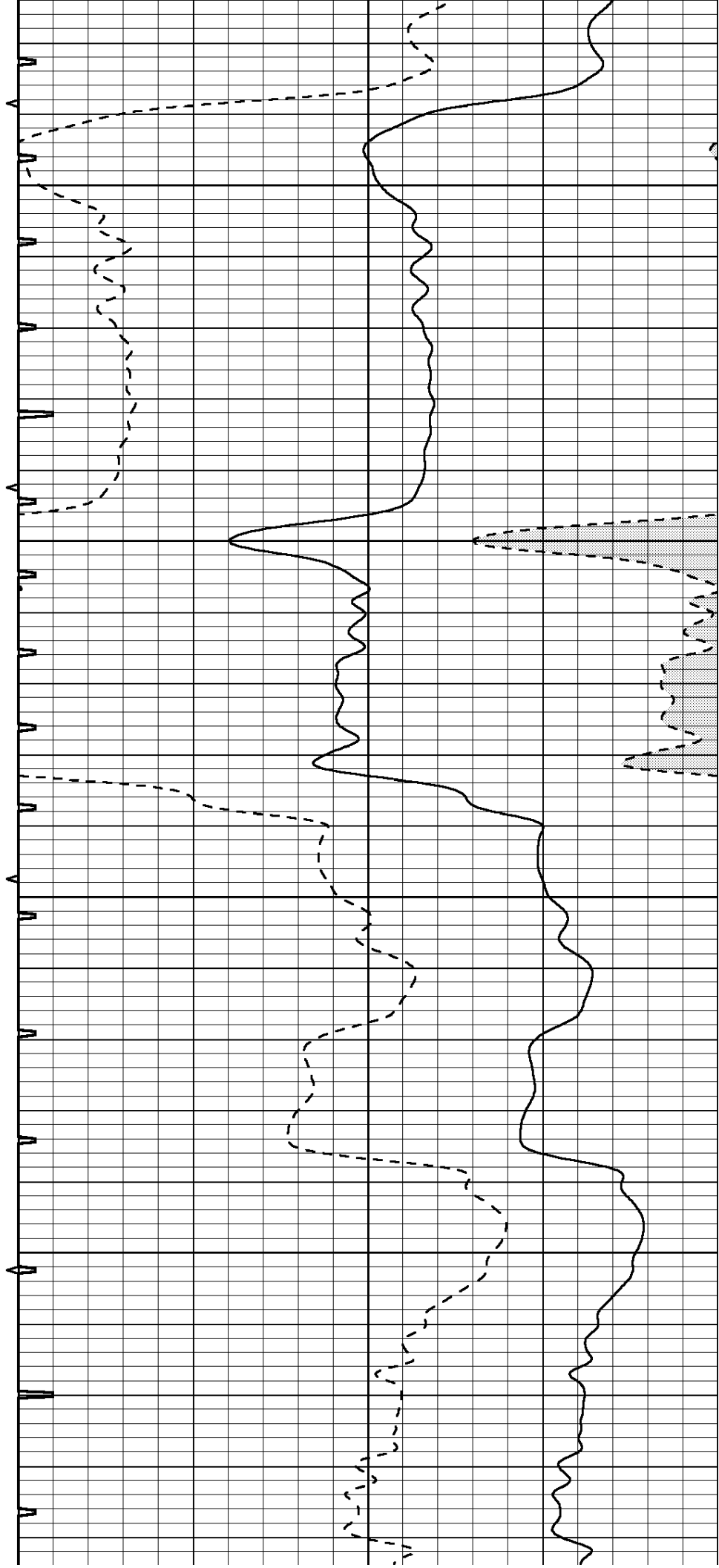


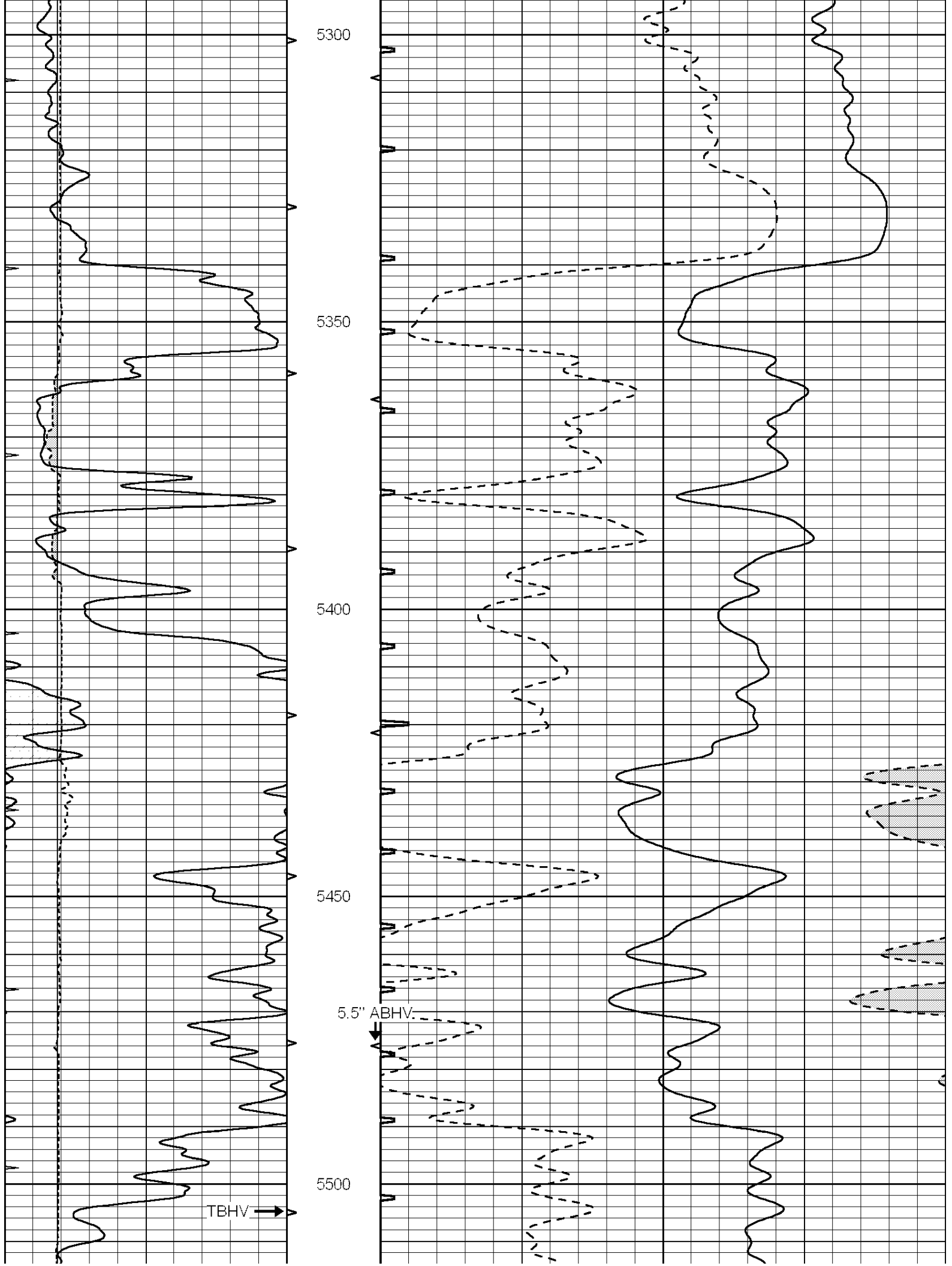
5100

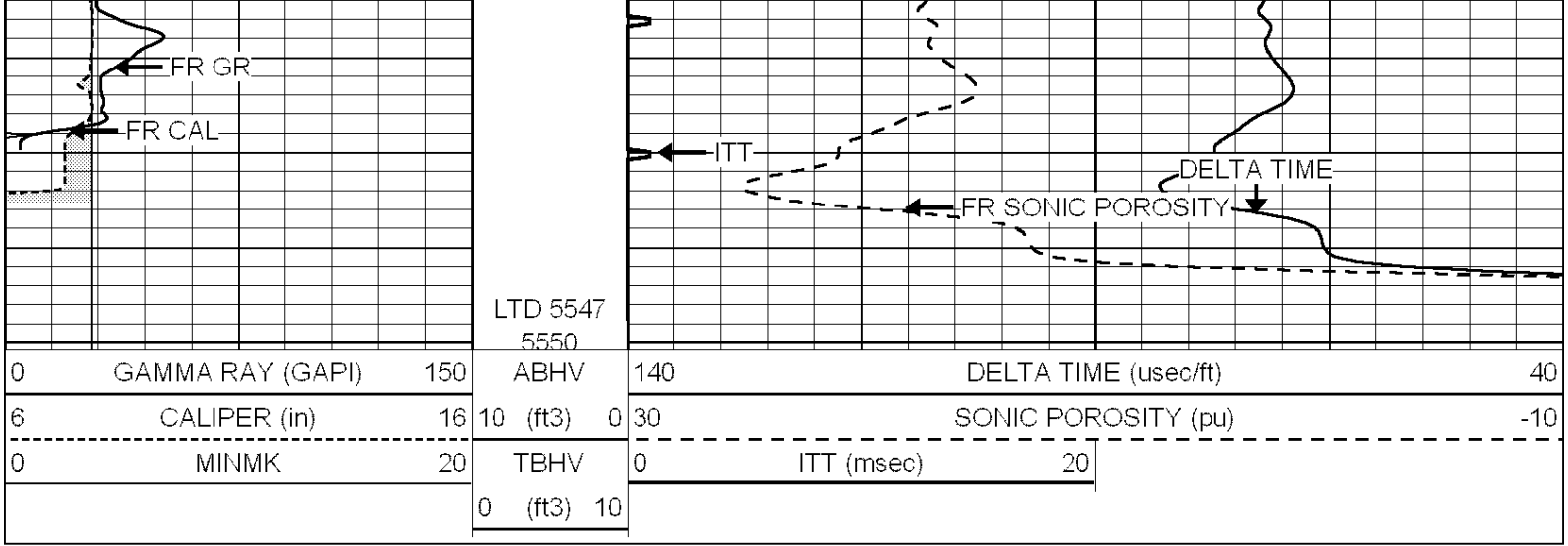
5150

5200

5250



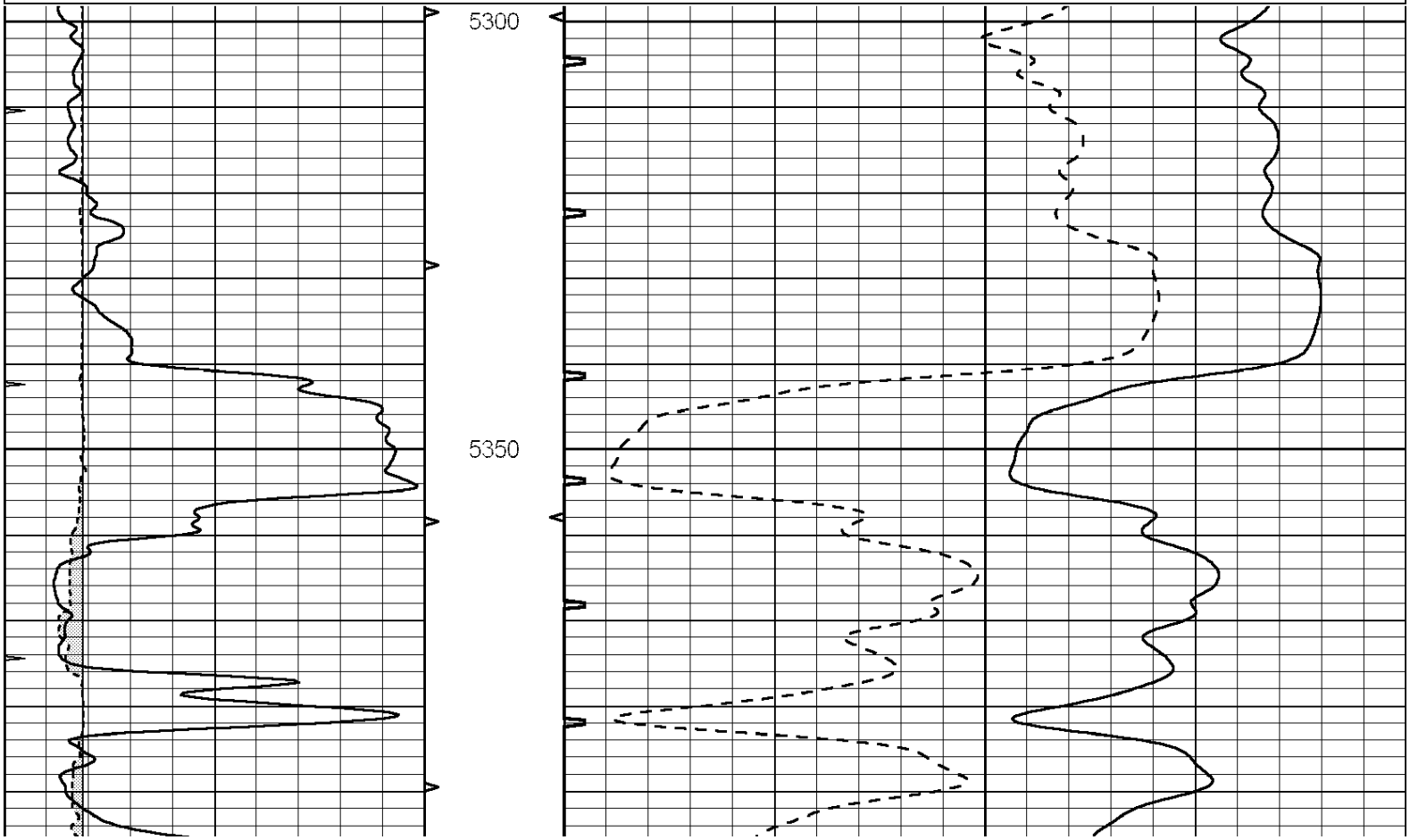


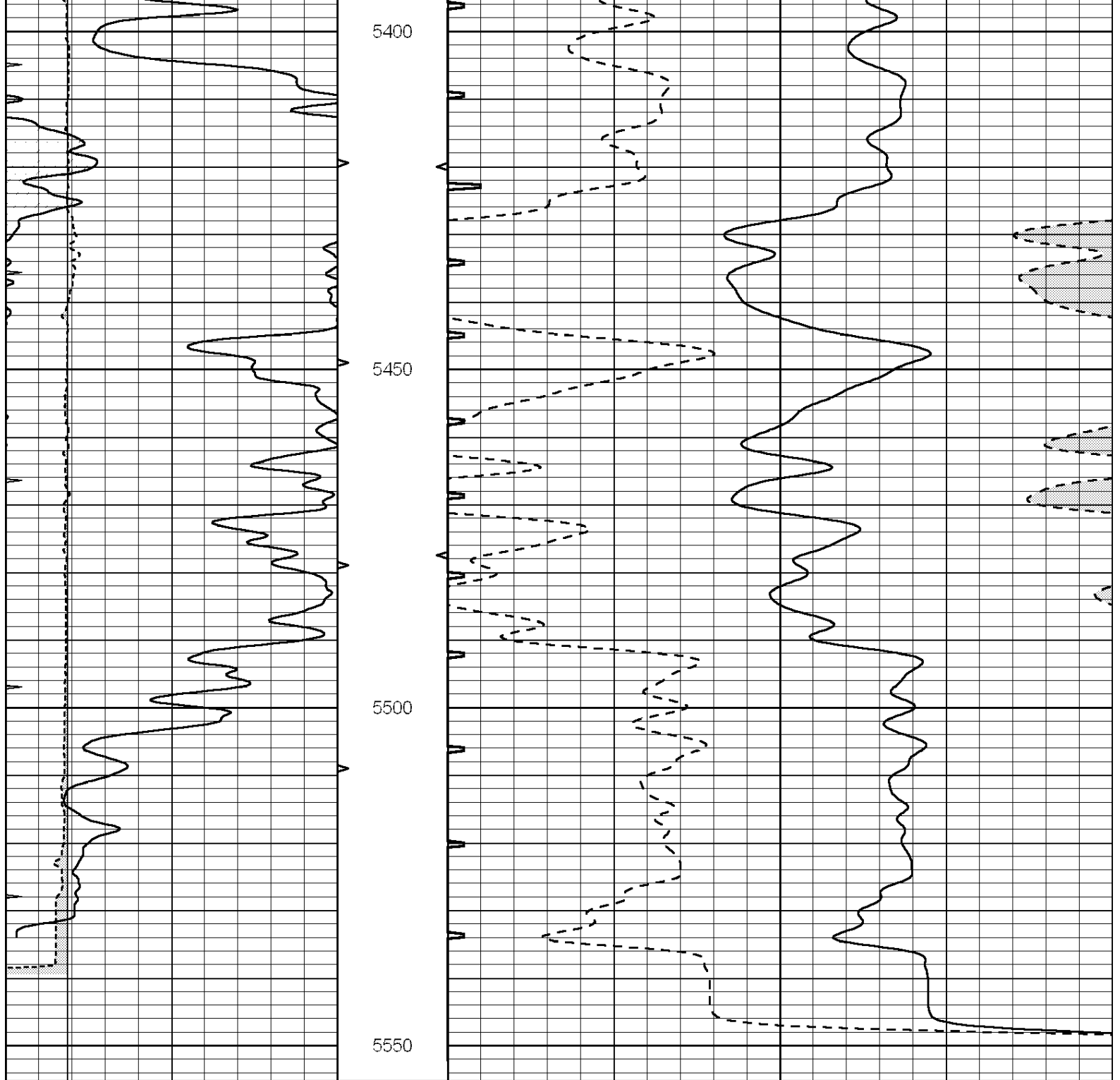


# REPEAT SECTION

Database File: 25888pe.db  
 Dataset Pathname: pass6.1  
 Presentation Format: slt  
 Dataset Creation: Wed Oct 01 02:27:09 2014 by Calc SOC 120430  
 Charted by: Depth in Feet scaled 1:240

0	GAMMA RAY (GAPI)	150	ABHV	140	DELTA TIME (usec/ft)	40
6	CALIPER (in)	16	10 (ft3) 0	30	SONIC POROSITY (pu)	-10
0	MINMK	20	TBHV	0	ITT (msec)	20
			0 (ft3) 10			





0	GAMMA RAY (GAPI)	150	ABHV	140	DELTA TIME (usec/ft)	40	
6	CALIPER (in)	16	10 (ft3)	0	30	SONIC POROSITY (pu)	-10
0	MINMK	20	TBHV	0	ITT (msec)	20	
			0 (ft3)	10			